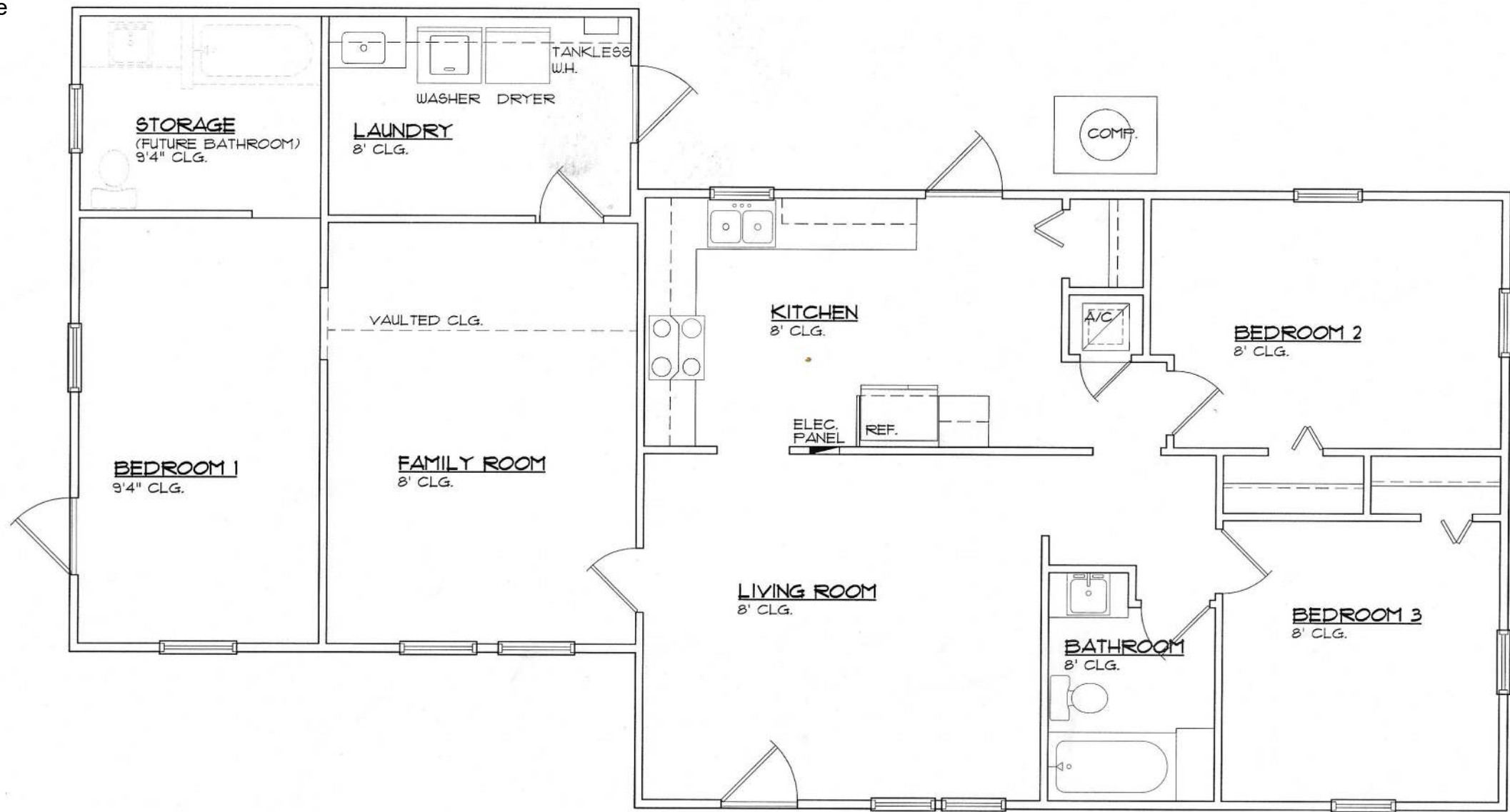


Scope of Work:

Finish the interior of the residence to include:

- Plumbing
- Electrical
- Insulation
- Drywall
- Cabinets
- Flooring
- HVAC



**A** Existing Conditions  
**A1** SCALE: 3/16" = 1'-0" 1,376 SF.

**THE FINAL PLAN, INC.**  
WWW.THEFINALPLAN.COM  
TEL. 352.410.2539

CUSTOM DESIGNS, SPACE PLANNING  
TENANT BUILD OUTS, ADDITIONS, REMODELS

revisions	by

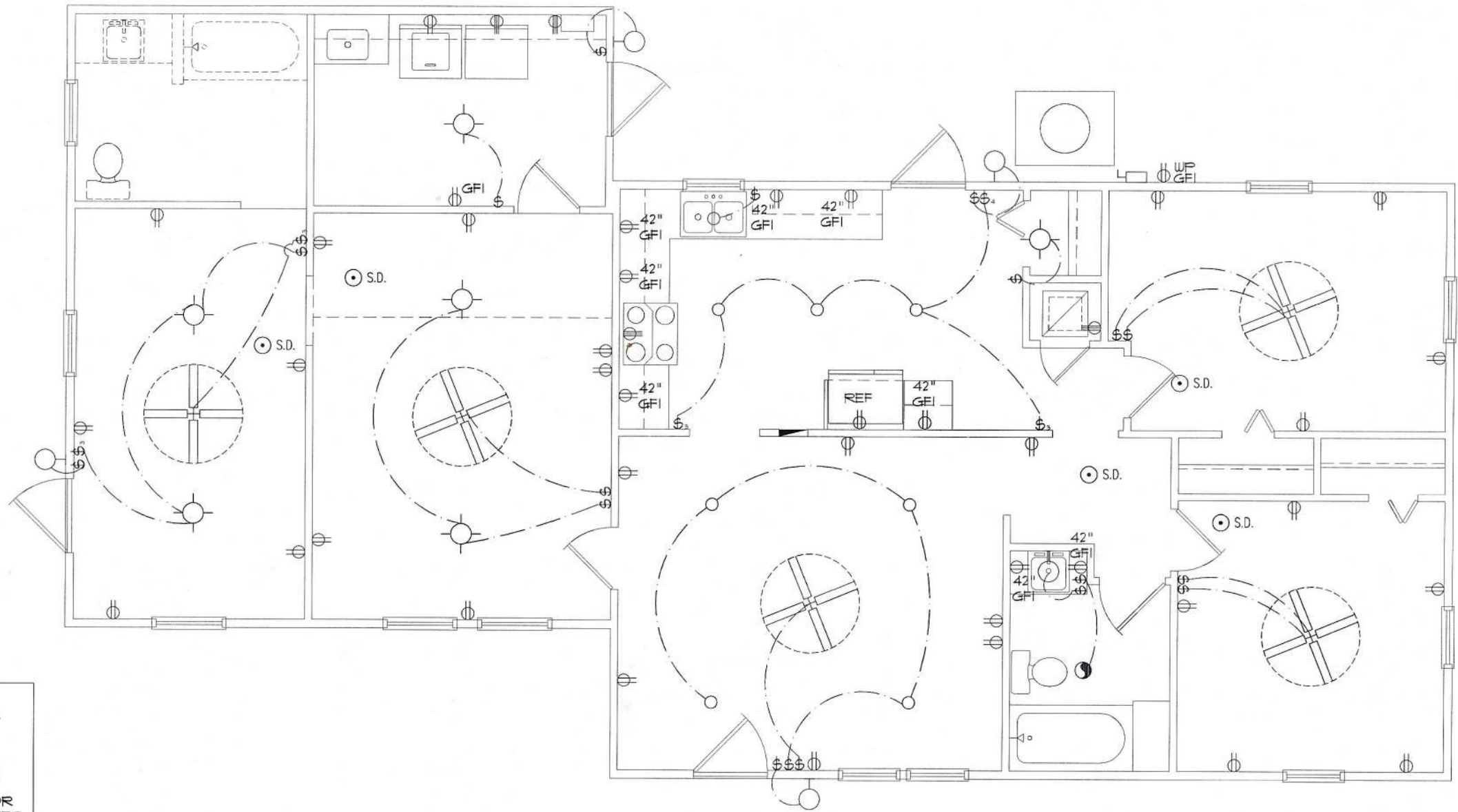
**BAKER RENOVATION**  
950 LAKE AVALON AVENUE  
CITY OF LAKE CITY, FLORIDA

job no BAKER 0322
drawn by DA
checked DA
date 03/30/22
scale AS NOTED
drawing no. <b>A1</b>

ELECTRICAL LEGEND

- Ceiling Mounted Light
- Wall Mounted Light
- Duplex Receptacle
- 220 V Receptacle
- 1/2 hot, 1/2 switched
- Water Proof Receptacle
- Ground Fault Interrupt
- Wall Switch
- 3-Way Switch
- Dimmer Switch
- Electrical Panel
- Disconnect Switch
- Electrical Meter
- S.D. Smoke Detector
- Ceiling Fan
- Chandelier

NOTES:  
1. PROVIDE ARC FAULT PROTECTION IN ALL LIVING SPACES, EXCEPT IN BATHROOMS, KITCHEN, LAUNDRY, AND GARAGES.  
2. EXACT LOCATIONS OF FIXTURES AND/OR OUTLETS ARE SUGGESTED AND MEET MOST LOCAL CODE REQUIREMENTS. ADDITIONS OR ADJUSTMENTS MAY BE MADE BETWEEN OWNER AND BUILDER IN THE FIELD.



**A** Proposed Electrical Fixture Layout  
**EI** SCALE: 3/16" = 1'-0"

THE FINAL PLAN, INC.  
WWW.THEFINALPLAN.COM  
TEL. 352.410.2539  
CUSTOM DESIGNS, SPACE PLANNING  
TENANT BUILD OUTS, ADDITIONS, REMODELS

revisions	by

BAKER RENOVATION  
550 LAKE AVALON AVENUE  
CITY OF LAKE CITY, FLORIDA

job no BAKER 0322
drawn by DA
checked DA
date 03/30/22
scale AS NOTED