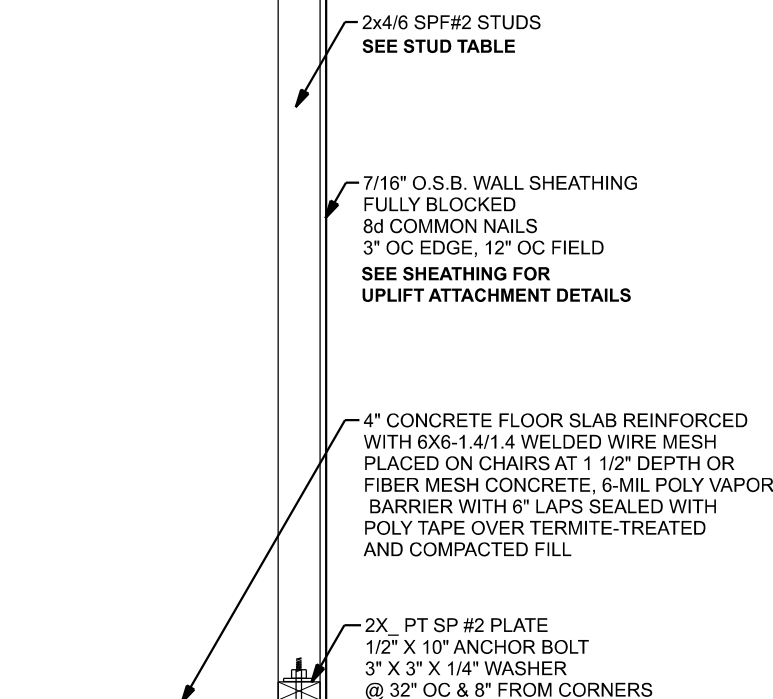
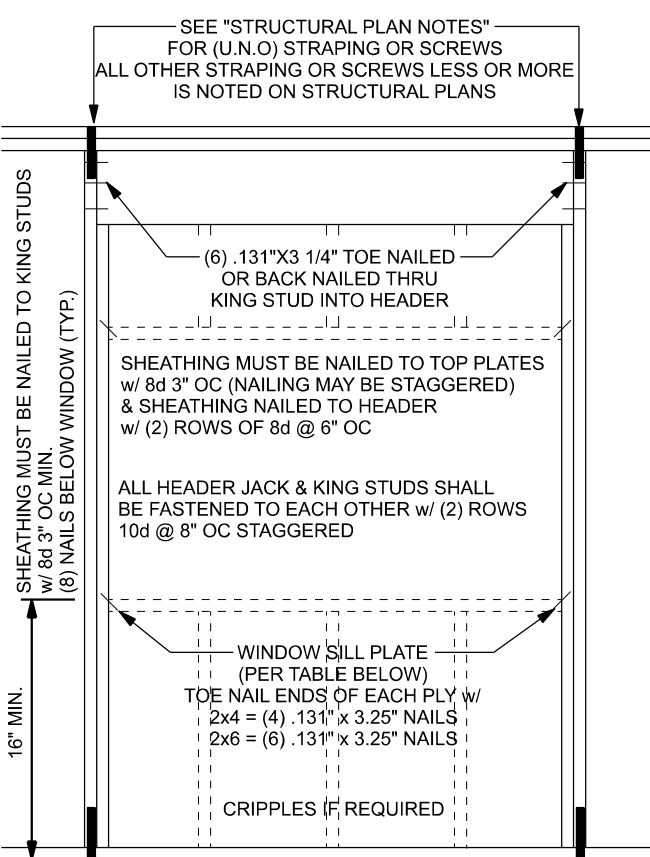


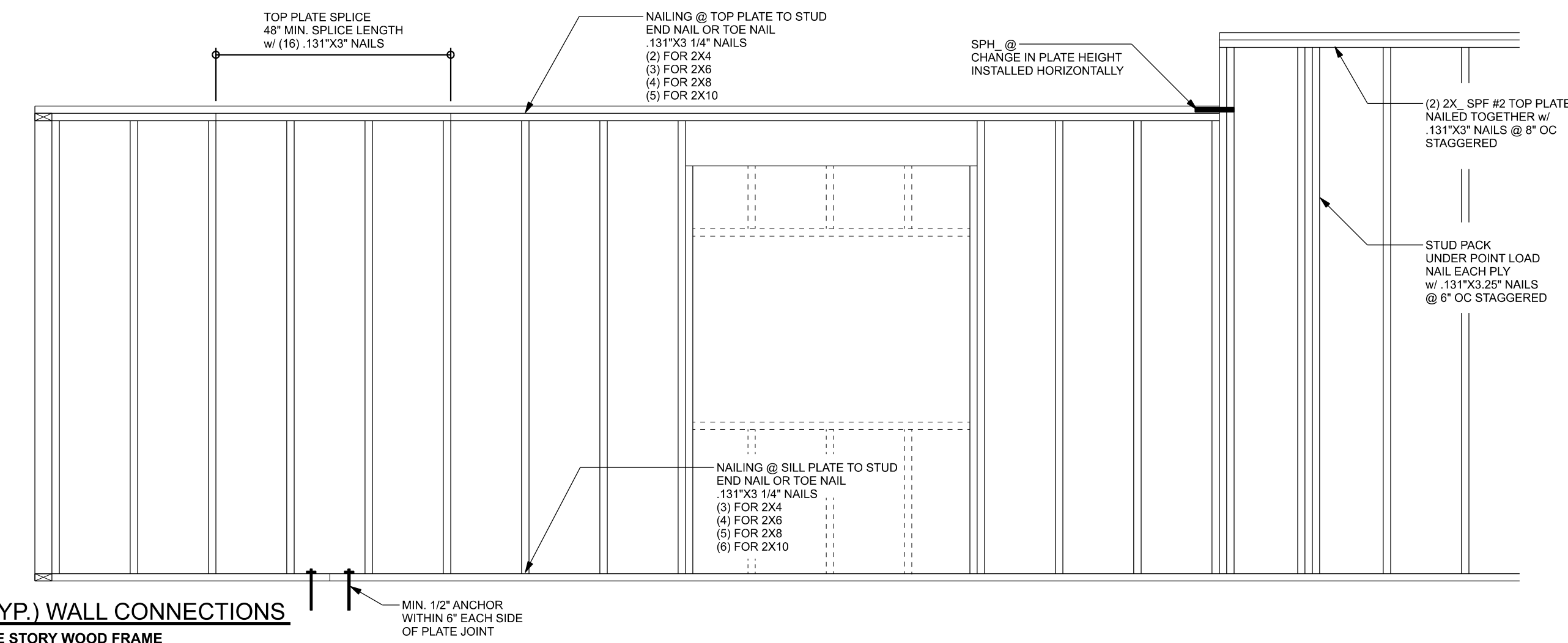
NOTE: SEAL ALL PENETRATIONS IN TOP PLATE AND FIRE STOP BLOCKING WITH CODE APPROVED SEALANT



ONE STORY WALL SECTION
SCALE: 3/4" = 1'-0"



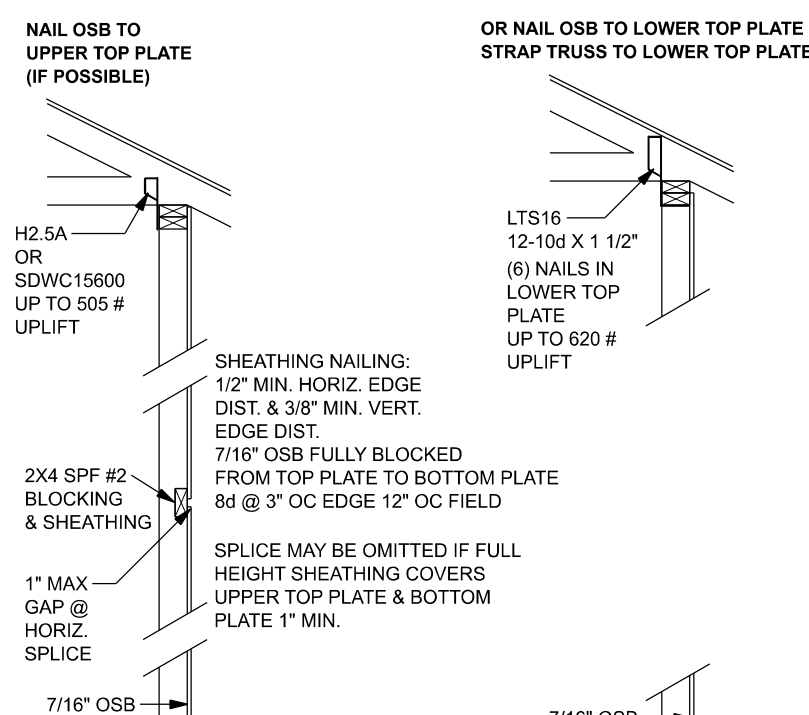
TYPICAL HEADER STRAPPING OR SCREWS DETAIL
ONE STORY WOOD FRAME w/ STRAPS & ANCHORS



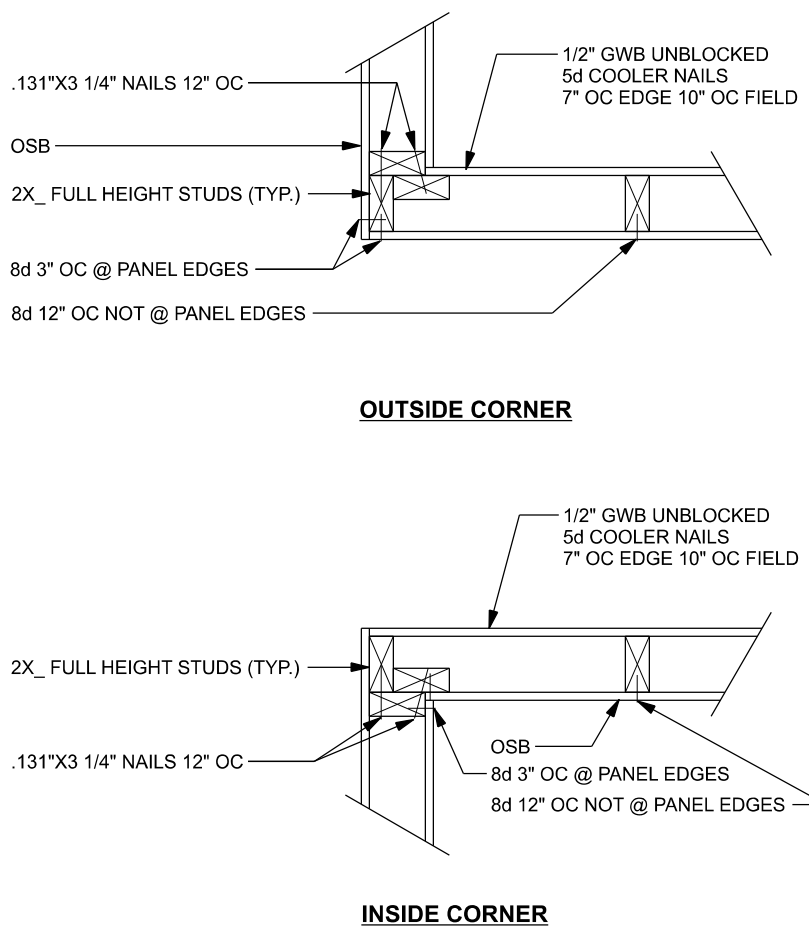
(TYP.) WALL CONNECTIONS
ONE STORY WOOD FRAME

Wind Speed	Sheathing Thickness Plywood Or OSB	Required Nail	Nail spacing along panel edges	Nail spacing along intermediate supports in the panel field
120 mph Exp. B	7/16"	ASTM F1667 RSR-01 (2 3/8" x 0.131")	6" oc	12" oc
120 mph Exp. C	7/16"	ASTM F1667 RSR-03 (2 1/2" x 0.131") or ASTM F1667 RSR-04 (3" x 0.120")	6" oc	6" oc
130 mph Exp. B	7/16"	ASTM F1667 RSR-01 (2 3/8" x 0.131")	6" oc	6" oc
130 mph Exp. C	15/32"	ASTM F1667 RSR-01 (2 3/8" x 0.131")	6" oc	6" oc
130 mph Exp. D	15/32"	ASTM F1667 RSR-03 (2 1/2" x 0.131") or ASTM F1667 RSR-04 (3" x 0.120")	6" oc	6" oc
140 mph Exp. B	7/16"	ASTM F1667 RSR-01 (2 3/8" x 0.131") or ASTM F1667 RSR-04 (3" x 0.120")	6" oc	6" oc
140 mph Exp. C	15/32"	ASTM F1667 RSR-03 (2 1/2" x 0.131") or ASTM F1667 RSR-04 (3" x 0.120")	6" oc	6" oc
140 mph Exp. D	15/32"	ASTM F1667 RSR-03 (2 1/2" x 0.131") or ASTM F1667 RSR-04 (3" x 0.120")	6" oc	6" oc
150 mph Exp. C	15/32"	ASTM F1667 RSR-03 (2 1/2" x 0.131") or ASTM F1667 RSR-04 (3" x 0.120")	6" oc	6" oc
150 mph Exp. D	15/32"	ASTM F1667 RSR-03 (2 1/2" x 0.131") or ASTM F1667 RSR-04 (3" x 0.120")	4" oc	4" oc

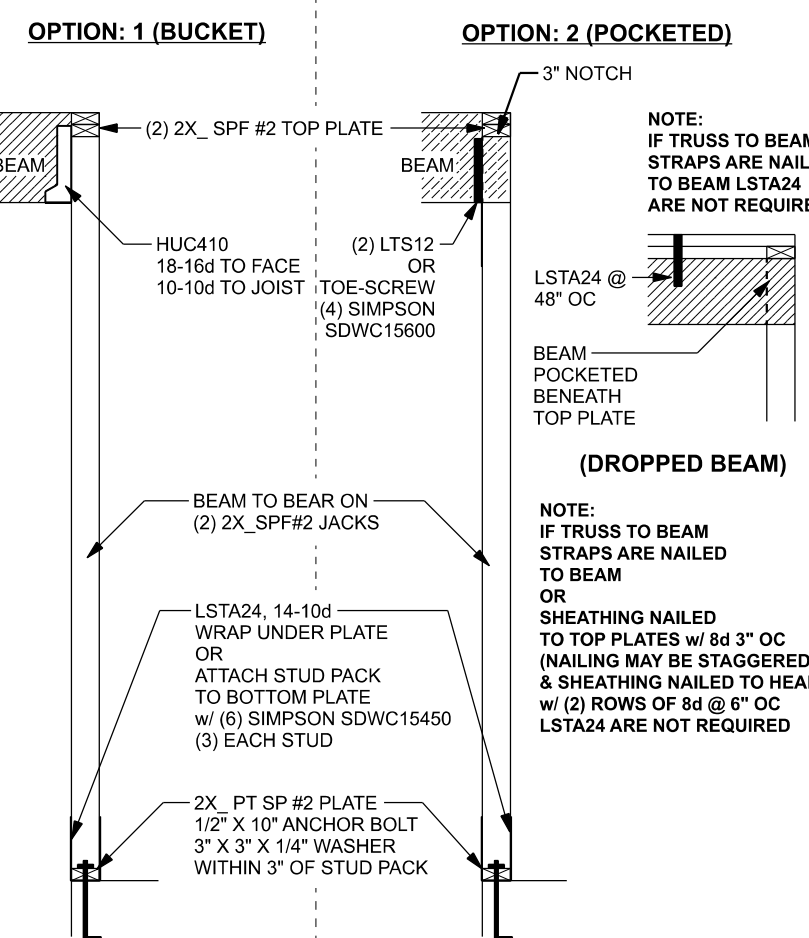
Note: For sheathing located a minimum of 4 feet from the perimeter edge of the roof, including 4 feet on each side of ridges and hips, nail spacing is permitted to be 6 inches on center along panel edges and 6 inches on center along intermediate supports in the panel field. Note: This table specifies the code minimum thickness of roof sheathing. The thickness of the sheathing may need to be increased based on the type of roofing material being used. See manufacturer Florida product approval.



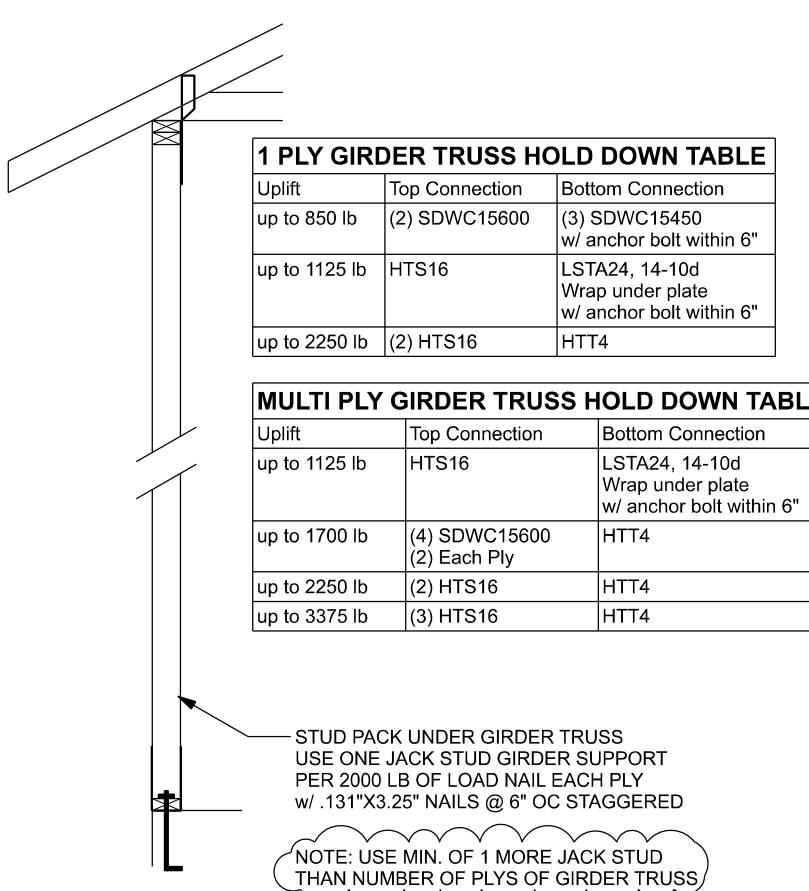
SHEATHING FOR UPLIFT ATTACHMENT DETAILS
ONE STORY WOOD FRAME



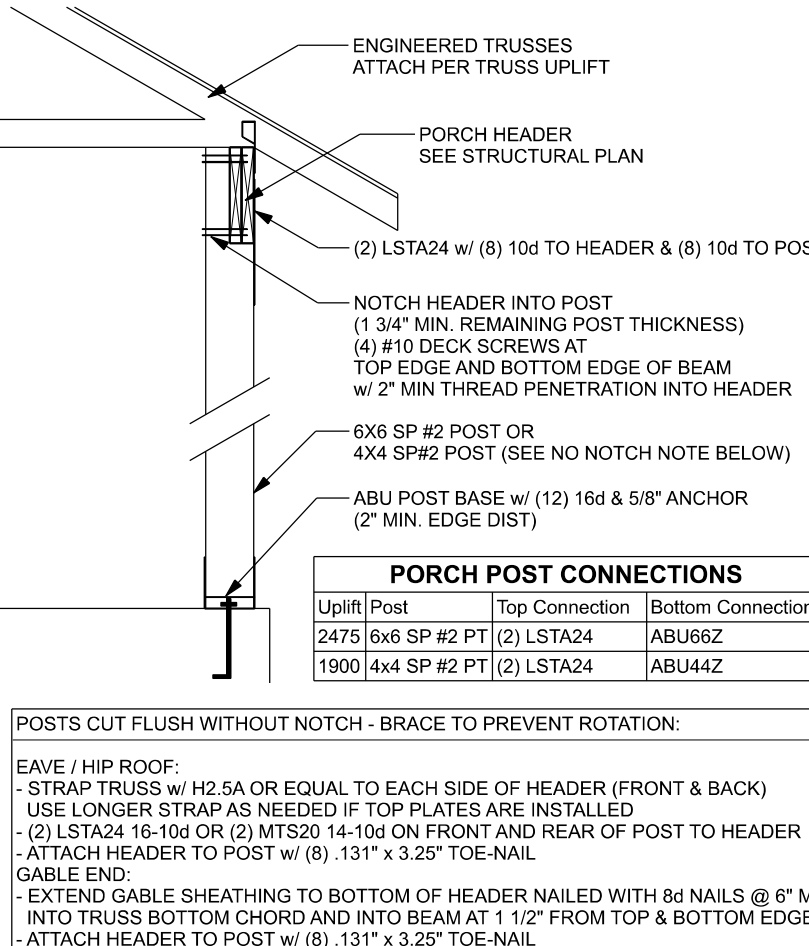
(TYP.) CORNER FRAMING
WOOD FRAME



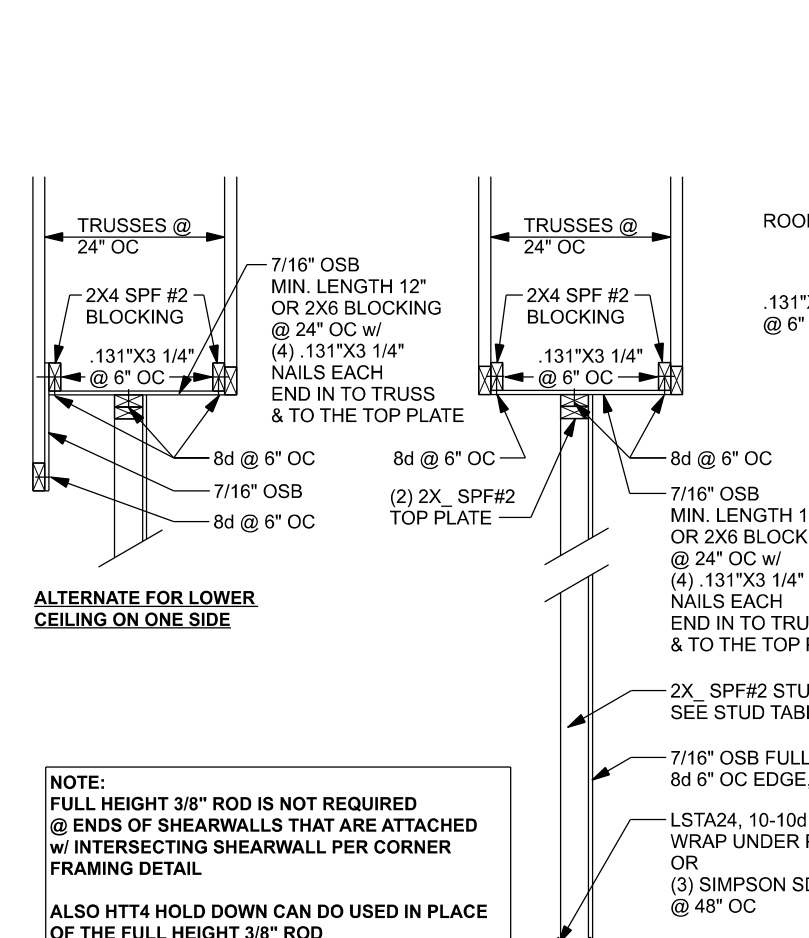
(TYP.) BEAM TO WALL
WOOD FRAME w/ STRAPS & ANCHORS



(TYP.) GIRDER TRUSS HOLD DOWN DETAIL
WOOD FRAME w/ STRAPS & ANCHORS



(TYP.) PORCH POST
ONE STORY WOOD



(NOTE: HAVE TRUSS DESIGNER LOAD TRUSS FOR 400 PLF DRAG LOAD)
INTERIOR SHEAR WALL
ONE STORY WOOD FRAME w/ STRAPS & AB

Uplift SP	Uplift SPF	Truss Connector	To Plate	To Truss/Rafter
805	505	SDWC15600	-	-
415	290	H3	4-8x4 1/2"	4-8x4 1/2"
615	540	H2.5A	5-8x4 1/2"	5-8x4 1/2"
1340	1015	H10A	9-10d1 1/2"	9-10d1 1/2"
720	620	LTS12-20	6-10d1 1/2"	6-10d1 1/2"
1000	860	MTS12-30	7-10d1 1/2"	7-10d1 1/2"
1450	1245	HTS20-30	12-10d1 1/2"	12-10d1 1/2"
Uplift SP	Uplift SPF	Strap Ties	To One Member	To Other Member
1235	1235	LSTA21	8-10d	8-10d
1640	1455	MSTA24	9-10d	9-10d
1030	1030	CS20	7-10d	7-10d
Uplift SP	Uplift SPF	Stud Plate Ties	To Stud	To Plate
585	535	SP1	6-10d	4-10d
1065	905	SP2	6-10d	6-10d
771	771	LSTA24	10-10d	wrap under or over plate
1235	1235	LSTA24	14-10d	wrap under or over plate
Uplift SP	Uplift SPF	Holdowns @ Stemmwall	To Stud / Post	Anchor
1825	1800	DTT22	8-SDS 1/4"x1 1/2"	1/2"x12" Titen HD
4235	3640	HTT4	18-16x2 1/2"	1/2"x12" Titen HD
Uplift SP	Uplift SPF	Holdowns @ Mono	To Stud / Post	Anchor
1825	1800	DTT22	8-SDS 1/4"x1 1/2"	1/2"x6" Titen HD
4235	3640	HTT4	18-16x2 1/2"	1/2"x12" Titen HD
Uplift SP	Uplift SPF	Post Bases @ Stemmwall	To Post	Anchor
1900	ABU44Z	ABU44Z	12-16d	5/8"x12" Drill & Epoxy
2475	ABU66Z	ABU66Z	12-16d	5/8"x12" Drill & Epoxy
Uplift SP	Uplift SPF	Post Bases @ Mono	To Post	Anchor
1900	ABU44Z	ABU44Z	12-16d	5/8"x7" Drill & Epoxy
2475	ABU66Z	ABU66Z	12-16d	5/8"x7" Drill & Epoxy

EXTERIOR WALL STUD TABLE FOR SPF #2 STUDS:

THIS STUD HEIGHT TABLE IS PER 2012 WFCM, TABLE 3.20B5, EXTERIOR LOAD BEARING & NON LOAD BEARING STUD LENGTHS FOR WALLS WITH OSB EXTERIOR AND 12" GYP INTERIOR RESISTING INTERIOR ZONE WINDLOADS, 130 MPH, EXPOSURE C, STUD DEFLECTION LIMIT H/240 (NOT OK FOR BRITTLE FINISH). STUD SPACINGS SHALL BE MULTIPLIED BY 0.8 FOR FRAMING LOCATED WITHIN 4 FEET OF CORNERS FOR END ZONE LOADING. (END ZONE EXAMPLE 16" O.C. x 0.8 = 12.8" O.C.)

(1) 2x4 @ 16" OC	TO 10'-1" STUD HEIGHT
(1) 2x4 @ 12" OC	TO 11'-2" STUD HEIGHT
(1) 2x6 @ 16" OC	TO 15'-7" STUD HEIGHT
(1) 2x6 @ 12" OC	TO 17'-3" STUD HEIGHT

	SP #2	Fb	E
2x8	SP #2	925	1.4
2x10	SP #2	800	1.4
2x12	SP #2	750	1.4
GLB	24F-V3 SP	2600	1.9
LVL	TIMBERSTRAND	1700	1.7
LVL	MICROLAM	2950	2.0
PSL	PARALAM	2900	2.0

GENERAL NOTES:

TRUSSES: TRUSSES SHALL BE DESIGNED BY A FLORIDA LICENSED ENGINEER IN ACCORDANCE WITH THE FBCR. TRUSS ENGINEERING SHALL INCLUDE TRUSS DESIGN, PLACEMENT PLANS, TEMPORARY AND PERMANENT BRACING DETAILS, TRUSS-TO-TRUSS CONNECTIONS, AND UPLIFT AND REACTION LOADS FOR ALL TRUSS LOCATIONS. TRUSS ENGINEERING IS THE RESPONSIBILITY OF THE TRUSS MANUFACTURER AND SHALL BE SIGNED & SEALED BY THE MANUFACTURER'S DESIGN ENGINEER. IT IS THE BUILDER'S RESPONSIBILITY TO VERIFY THE TRUSS DESIGNER HAS SATISFIED ALL THE ABOVE REQUIREMENTS AND TO SELECT UPLIFT CONNECTIONS BASED ON TRUSS ENGINEERING UPLIFT AND PROVIDE FOOTINGS FOR INTERIOR BEARING WALLS. THE BUILDER SHALL FURNISH TRUSS ENGINEERING TO WIND LOAD ENGINEER FOR REVIEW OF TRUSS REACTIONS ON THE BUILDING STRUCTURE. STRAP 2X6 RAFTERS WITH MIN. UPLIFT CONNECTION 415LB EACH END, 2X6 RAFTERS 700 LB EACH END.

SITE PREPARATION: SITE ANALYSIS AND PREPARATION IS NOT PART OF THIS PLAN.

FOUNDATION: CONFIRM THAT THE FOUNDATION DESIGN & SITE CONDITIONS MEET GRAVITY LOAD REQUIREMENTS (ASSUME 1500 PSF BEARING CAPACITY UNLESS ANALOG OBSERVATION OR SOILS TEST PROVES OTHERWISE).

CONCRETE: MINIMUM COMPRESSIVE STRENGTH OF CONCRETE AT 28 DAYS, F_c = 2500 PSI.

WELED WIRE REINFORCED SLAB: 6" x 6" W1.4 x W1.4, F_y = 80KSI, WELED WIRE REINFORCEMENT FABRIC W.W.M. CONFORMING TO ASTM A186, LOCATED IN MIDDLE OF THE SLAB, SUPPORTED WITH APPROVED MATERIALS OR SUPPORTS AT SPACINGS NOT TO EXCEED 3'.

FIBER CONCRETE SLAB: CONCRETE SLABS ON GROUND CONTAINING SYNTHETIC FIBER REINFORCEMENT, FIBER LENGTH 1/2 INCH TO 2 INCHES, DOSAGE AMOUNTS FROM 0.175 TO 1.5 POUNDS PER CUBIC YARD PER THE MANUFACTURER'S RECOMMENDATIONS. UNLESS OTHERWISE SPECIFIED, THE CONCRETE SHALL BE SUPPLIED BY THE MANUFACTURER. CERTIFICATION OF COMPLIANCE WHEN REQUESTED BY BUILDING OFFICIAL.

CONTROL JOINTS: WHERE SPECIFIED, SAWN CONTROL JOINTS IN SLAB-ON-GRADE SHALL BE CUT IN ACCORDANCE WITH ACI 302. JOINTS SHALL BE CUT WITHIN 12 HOURS OF SLAB PLACEMENT. THE LENGTH / WIDTH RATIOS OF SLAB AREAS SHALL NOT EXCEED 1.5 AND TYPICAL SPACING OF CUTS TO BE 12FT. DO NOT CUT WMM OR REINFORCING STEEL. (RECOMMENDED LOCATION OF CONTROL JOINTS IS SUBJECT TO OWNER AND ENGINEER APPROVAL. THE CONTROL JOINTS ARE NOT INTENDED TO PREVENT CRACKS BUT RATHER TO ENCOURAGE THE SLAB TO CRACK ON A GIVEN LINE.)

REBAR: ASTM A615, GRADE 40, DEFORMED BARS, F_y = 40 KSI, ALL LAP SPLICES 40" DB (25" FOR #5 BARS), UNLO. ALL REINFORCEMENT SHALL BE DETAILED AND PLACED IN ACCORDANCE WITH ACI 318-05, UNLO.

ROOF SHEATHING: ALL ROOFS ARE HORIZONTAL DIAPHRAGMS. SHEATHING, UNLOCKED, APPLIED PERPENDICULAR TO FRAMING, OVER A MINIMUM OF 3 FRAMING MEMBERS, WITH PANEL EDGES STAGGERED.

STRUCTURAL CONNECTORS: MANUFACTURERS AND PRODUCT NUMBER FOR CONNECTORS, UNLOCKED, APPLIED PERPENDICULAR TO FRAMING, OVER A MINIMUM OF 3 FRAMING MEMBERS, WITH PANEL EDGES STAGGERED.

ANCHOR BOLTS: A-307 ANCHOR BOLTS WITH MINIMUM EMBEDMENT AS SPECIFIED IN DRAWINGS BUT NO LESS THAN 7" IN CONCRETE OR REINFORCED BOND BEAM OR 12" IN GROTTED CMU.

BUILDER'S RESPONSIBILITY:

THE BUILDER AND OWNER ARE RESPONSIBLE FOR THE FOLLOWING, WHICH ARE SPECIFICALLY NOT PART OF THE WIND LOAD ENGINEER'S SCOPE OF WORK.

CONFIRM SITE CONDITIONS, FOUNDATION BEARING CAPACITY, GRADE AND BACKFILL HEIGHT, WIND SPEED AND DEBRIS ZONE, AND FLOOD ZONE.

PROVIDE MATERIALS AND CONSTRUCTION TECHNIQUES, WHICH COMPLY WITH FBCR REQUIREMENTS FOR THE STATED WIND VELOCITY AND DESIGN PRESSURES.

PROVIDE A CONTINUOUS LOAD PATH FROM TRUSSES TO FOUNDATION, IF YOU BELIEVE THE PLAN OMTS A CONTINUOUS LOAD PATH CONNECTION, CALL THE WIND LOAD ENGINEER IMMEDIATELY.

VERIFY THE TRUSS MANUFACTURER'S SEALED ENGINEERING INCLUDES TRUSS DESIGN, PLACEMENT PLANS, TEMPORARY AND PERMANENT BRACING DETAILS, TRUSS-TO-TRUSS CONNECTIONS, AND UPLIFT AND REACTION LOADS FOR ALL BEARING LOCATIONS.

ROOF SYSTEM DESIGN:

THE SEAL ON THESE PLANS FOR COMPLIANCE WITH FBCR.

IS BASED ON REACTIONS, UPLIFTS, AND BEARING LOCATIONS IN TRUSS ENGINEERING SUBMITTED TO THE WIND LOAD ENGINEER. IT IS THE RESPONSIBILITY OF THE BUILDER TO CHECK ALL DETAILS OF THE COMPLETE ROOF SYSTEM DESIGN SUBMITTED BY THE TRUSS MANUFACTURER AND HAVE IT SIGNED, AND SEALED BY A DESIGN PROFESSIONAL FOR CORRECT APPLICATION OF FBCR REQUIRED LOADS AND ANY SPECIAL LOADS. THE BUILDER IS RESPONSIBLE TO REVIEW EACH INDIVIDUAL TRUSS MEMBER AND THE TRUSS ROOF SYSTEM AS A WHOLE AND TO PROVIDE RESTRAINT FOR ANY LATERAL BRACING. THE BUILDER SHOULD USE CARE CHECKING THE ROOF DESIGN BECAUSE THE WIND LOAD ENGINEER IS SPECIFICALLY NOT RESPONSIBLE FOR THE TRUSS LAYOUT WHICH WAS CREATED BY THE TRUSS MANUFACTURER AND THE TRUSS DESIGNER ALSO DENIES RESPONSIBILITY FOR THE LAYOUT PER NOTES ON THEIR SEALED TRUSS SHEETS.

Bryan Zecher Homes, Inc.

POOL HOUSE
DAN & RACHEL
SHELLEY

PROJECT ADDRESS:
LAKE CITY, FLORIDA

FL PE 53915

This item has been digitally signed and sealed by Mark Disoway, P.E. for resolution. Printed copies of this document are not considered signed and sealed and the signature must be verified on any electronic copies.

DIMENSIONS: Stated dimensions supersede scaled dimensions. Refer all questions to Mark Disoway, P.E. for resolution. Do not proceed without clarification.

COPYRIGHTS AND PROPERTY RIGHTS: Mark Disoway, P.E. hereby expressly reserves its common law copyrights and property right in these instruments of service. This document is not to be reproduced, altered or copied in any form or manner without first the express written permission and consent of Mark Disoway.

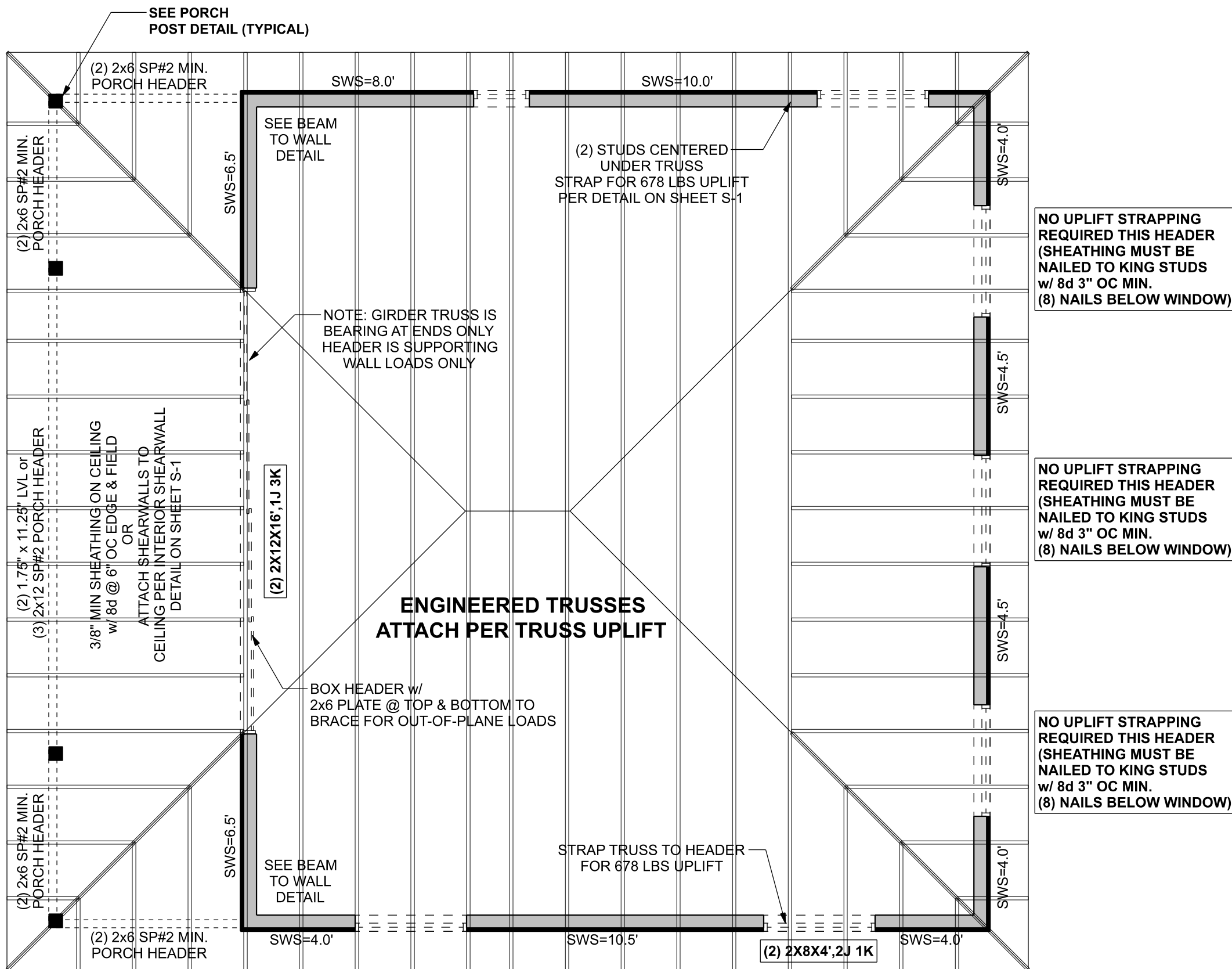
CERTIFICATION: I hereby certify that I have examined this plan, and that the applicable portions of the plan, relating to wind engineering comply with the 8th Edition Florida Building Code Residential (2023) to the best of my knowledge.

LIMITATION: This design is valid for one building, at specified location.

Mark Disoway P.E.
163 SW Midtown Place
Suite 103
Lake City, Florida 32025
386.754.5419
disowaydesign@gmail.com

JOB NUMBER:
250639

S-1
OF 2 SHEETS



STRUCTURAL PLAN

SCALE: 1/4" = 1'-0"

STRUCTURAL PLAN NOTES

- SN-1 DIMENSIONS ON STRUCTURAL SHEETS ARE NOT EXACT. REFER TO ARCHITECTURAL FLOOR PLAN FOR ACTUAL DIMENSIONS
- SN-2 PERMANENT TRUSS BRACING IS TO BE INSTALLED AT LOCATIONS AS SHOWN ON THE SEALED TRUSS DRAWINGS. LATERAL BRACING IS TO BE RESTRAINED PER BCS1-03, BCS1-B1, BCS1-B2, & BCS1-B3. BCS1-B1, BCS1-B2, & BCS1-B3 ARE FURNISHED BY THE TRUSS SUPPLIER, WITH THE SEALED TRUSS PACKAGE

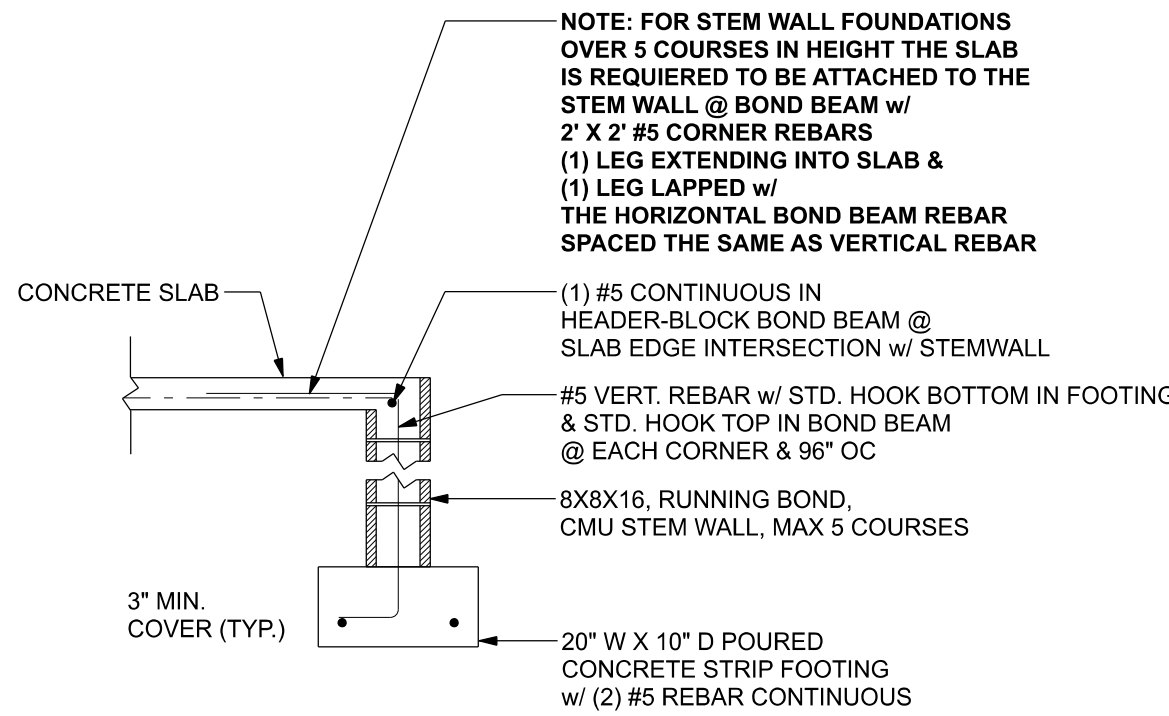
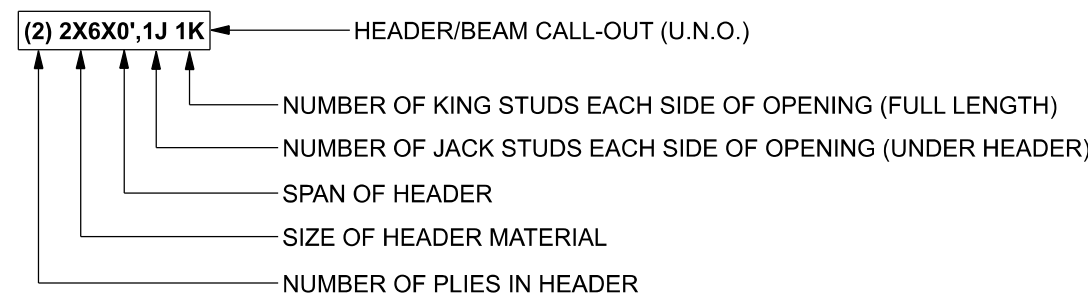
ACTUAL vs REQUIRED SHEARWALL

	TRANSVERSE	LONGITUDINAL
ACTUAL	11880 LBF	14454 LBF
REQUIRED	9262 LBF	7350 LBF

CONNECTIONS, WALL, & HEADER DESIGN IS BASED ON REACTIONS & UPLIFTS FROM TRUSS ENGINEERING FURNISHED BY BUILDER, W.B. HOWLAND CO
JOB #25-2736

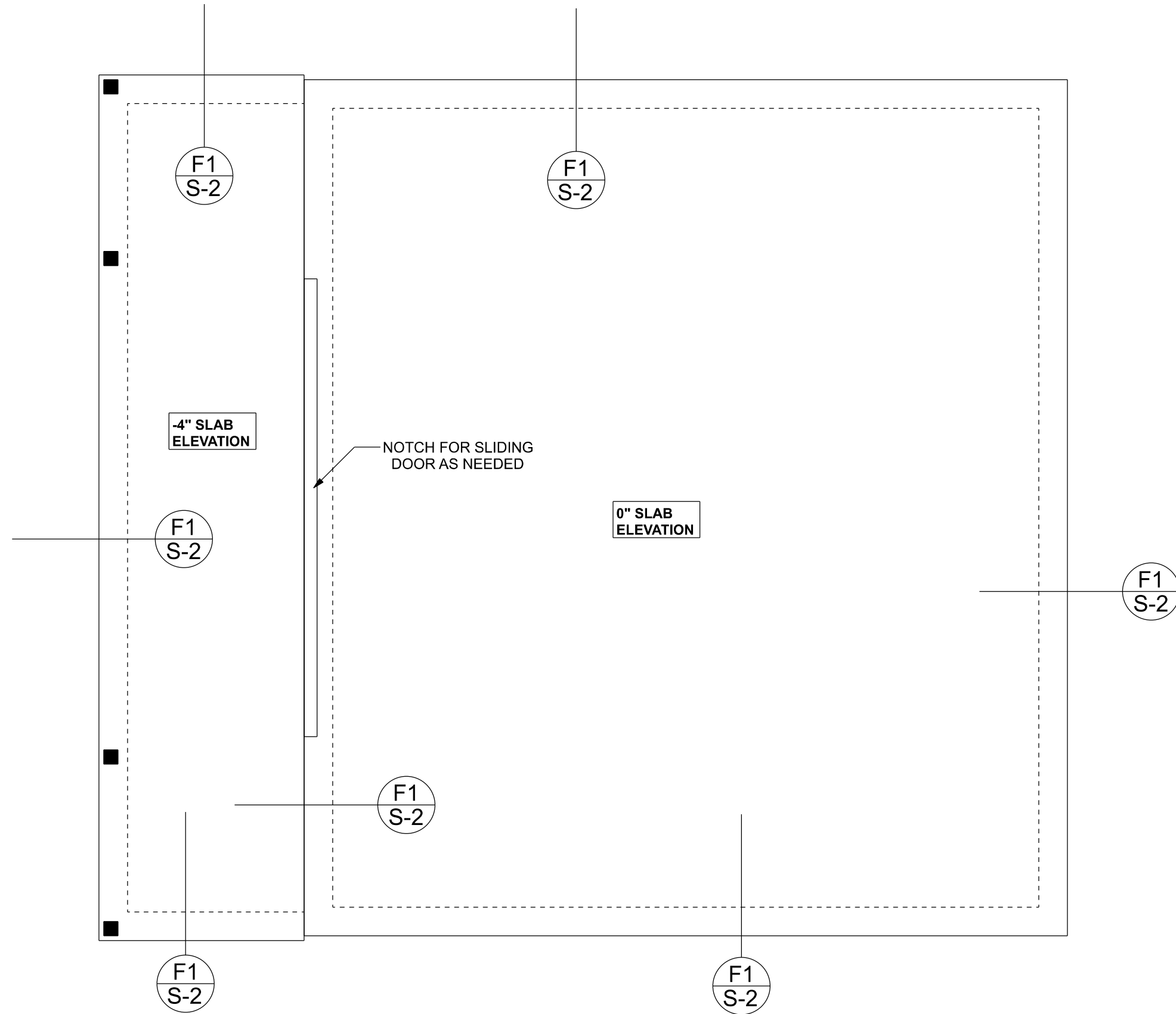
UNLESS NOTED OTHERWISE (MINIMUM REQUIERMENTS) ***SEE STRUCTURAL PLAN FOR ANY SPECIFIC CALL OUTS***	
BEAM / HEADERS (SIZE)	ALL LOAD BEARING FRAME WALL & PORCH HEADERS SHALL BE A MINIMUM OF (2) 2X6 SP #2 (UNO)
HEADERS (JACK & KING STUDS)	ALL LOAD BEARING FRAME WALL HEADERS SHALL HAVE (1) JACK STUD & (1) KING STUD EACH SIDE (UNO)
HEADERS (STRAPPING)	ALL HEADERS w/ UPLIFT TO BE STRAPPED OR SCREWED DOWN w/ MIN. OPTION #1 OR OPTION #3 (SEE DETAIL ON SHEET S-1) (U.N.O.) 1/2" X 10" ANCHOR BOLT w/ 3" X 3" X 1/4" WASHER MUST BE LOCATED WITHIN 6" OF KING STUD @ ALL DOOR LOCATIONS (U.N.O.)
JACK STUDS UNDER GIRDER TRUSS	USE ONE JACK STUD GIRDER SUPPORT PER 2000 LB LOAD

HEADER LEGEND



OPTIONAL STEM WALL FOOTING

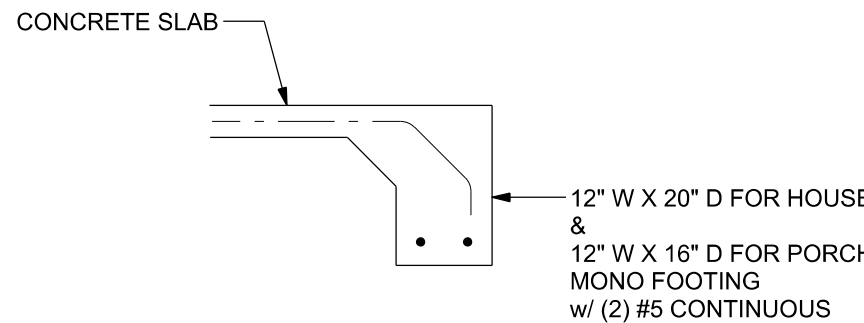
SCALE: 1/2" = 1'-0"



FOUNDATION PLAN

SCALE: 1/4" = 1'-0"

FOUNDATION NOTES	
FN - 1	DIMENSIONS ON FOUNDATION & STRUCTURAL SHEETS ARE NOT EXACT. REFER TO ARCHITECTURAL PLANS FOR ACTUAL DIMENSIONS, RECESSES IN SLAB STEP DOWNS, ETC. DISCOWAY DESIGN GROUP OR MARK DISCOWAY, P.E. IS NOT RESPONSIBLE FOR DIMENSION ERRORS ON THIS PLAN.
FN - 2	CONTRACTOR SHALL VERIFY NEED FOR INTERIOR BEARING IN ALL AREAS BY REVIEWING THE ROOF TRUSS PLAN (BY THE SUPPLIER) BEFORE FINALIZING FOUNDATION PLAN.
FN - 3	THE SLAB SHALL BE: 4" CONCRETE SLAB REINFORCED w/ 6X6-1.4/1.4 WELDED WIRE MESH PLACED ON CHAIRS @ 1/2" DEPTH ON FIBER MESH CONCRETE, 6-MIL POLY VAPOR BARRIER w/ 6" LAPS SEALED w/ POLY TAPE OVER TERMITES, TREATED & COMPACTED FILL (ALSO, ANY OTHER CODE APPROVED TERMITE TREATMENT METHOD CAN BE USED INSTEAD).



MONOLITHIC FOOTING

SCALE: 1/2" = 1'-0"

MASONRY NOTE:
MASONRY CONSTRUCTION AND MATERIALS FOR THIS PROJECT SHALL CONFORM TO ALL REQUIREMENTS OF "SPECIFICATION FOR MASONRY STRUCTURES" (ACI 530.1/ASCE 6/TMS 602). THE CONTRACTOR AND MASON MUST IMMEDIATELY, BEFORE PROCEEDING, NOTIFY THE ENGINEER OF ANY CONFLICTS BETWEEN ACI 530.1-02 AND THESE DESIGN DRAWINGS. ANY EXCEPTIONS TO ACI 530.1-02 MUST BE APPROVED BY THE ENGINEER IN WRITING.

	ACI 530.1-02 Section	Specific Requirements
1.4A	Compressive strength	8" block bearing walls F'm = 1500 psi
2.1	Mortar	ASTM C 270, Type N, UNO
2.2	Grout	ASTM C 476, admixtures require approval
2.3	CMU standard	ASTM C 90-02, Normal weight, hollow, medium surface finish, 8"x8"x16" running bond and 12"x12" or 16"x16" column block.
2.3	Clay brick standard	ASTM C 216-02, Grade SW, Type FBS, 5.9"x2.75"x11.5"
2.4	Reinforcing bars, #3 - #11	ASTM A615, Grade 40, Fy = 40 ksi, Lap splices min 40 bar dia. (25" for #5)
2.4F	Coating for corrosion protection	Anchors, sheet metal ties completely imbedded in mortar or grout, ASTM A525, Class G60, 0.60 oz/ft ² or 304SS
2.4F	Coating for corrosion protection	Joint reinforcement in walls exposed to moisture or wire ties, anchors, sheet metal ties not completely embedded in mortar or grout, ASTM A153, Class B2, 1.50 oz/ft ² or 304SS.
3.3.E.2	Pipes, conduits, and accessories	Any not shown on the project drawings require engineering approval.
3.3.E.7	Movement joints	Contractor assumes responsibility for type and location of movement joints if not detailed on project drawings.

BOTTOM OF EXTERIOR FOOTINGS SHALL BE A MINIMUM OF 12" BELOW UNDISTURBED SOIL OR ENGINEERED FILL

Bryan Zecher Homes, Inc.

POOL HOUSE
DAN & RACHEL
SHELLEY

PROJECT ADDRESS:
163 SW MIDTOWN PLACE
LAKE CITY, FLORIDA

FL PE 53915
This item has been digitally signed and sealed by Mark Discoway, P.E. on digital signature date. Printed copies of this document are not considered signed and sealed and the signature must be verified on any electronic copies.

DIMENSIONS:
Stated dimensions supersede scaled dimensions. Refer all questions to Mark Discoway, P.E. for resolution. Do not proceed without clarification.

COPYRIGHTS AND PROPERTY RIGHTS:
Mark Discoway, P.E. hereby expressly reserves its common law copyrights and property right in these instruments of service. This document is not to be reproduced, altered or copied in any form or manner without first the express written permission and consent of Mark Discoway.

CERTIFICATION: I hereby certify that I have examined this plan, and that the applicable portions of the plan, relating to wind engineering comply with the 8th Edition Florida Building Code Residential (2023) to the best of my knowledge.

LIMITATION: This design is valid for one building, at specified location.

Mark Discoway P.E.
163 SW Midtown Place
Suite 103
Lake City, Florida 32025
386.754.5419
discowaydesign@gmail.com

JOB NUMBER:
250639

S-2
OF 2 SHEETS