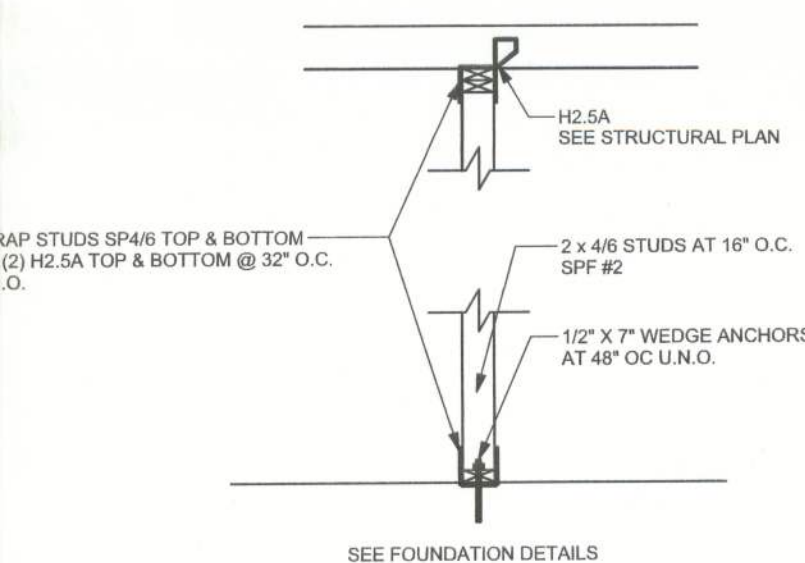
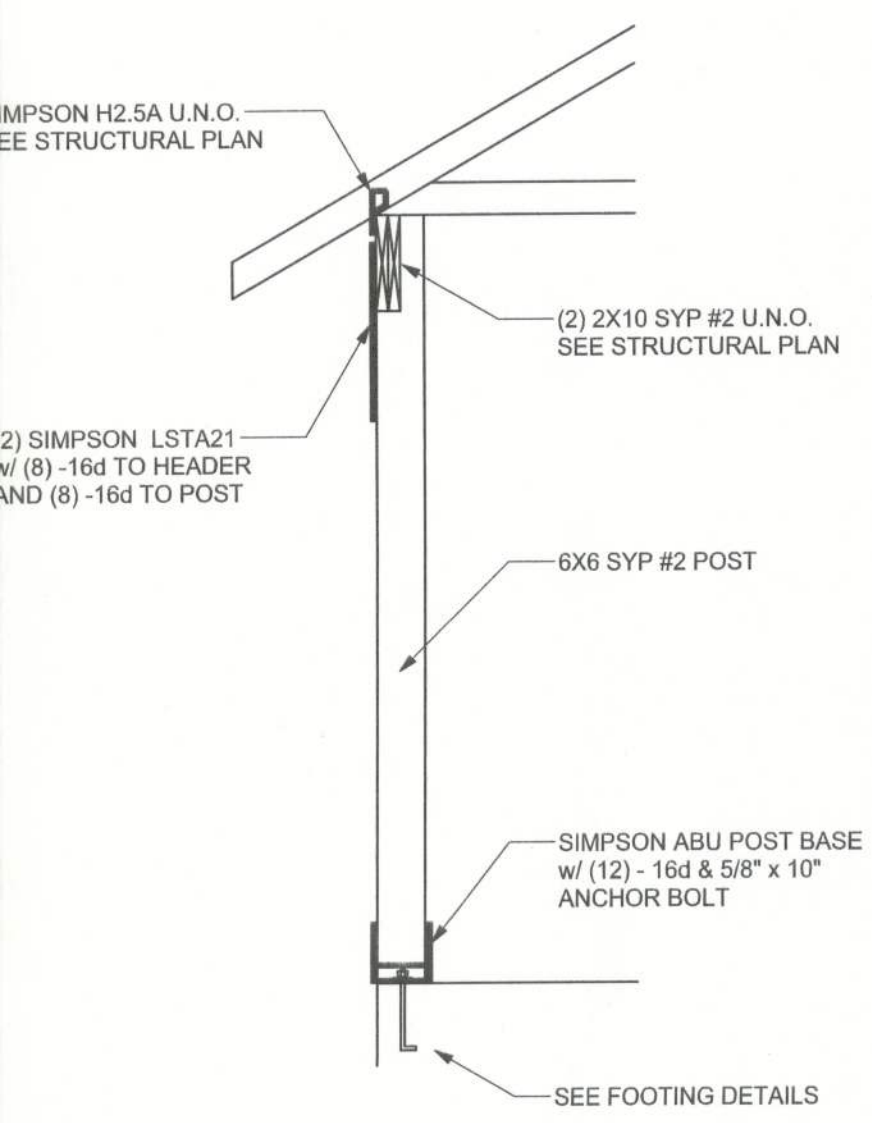


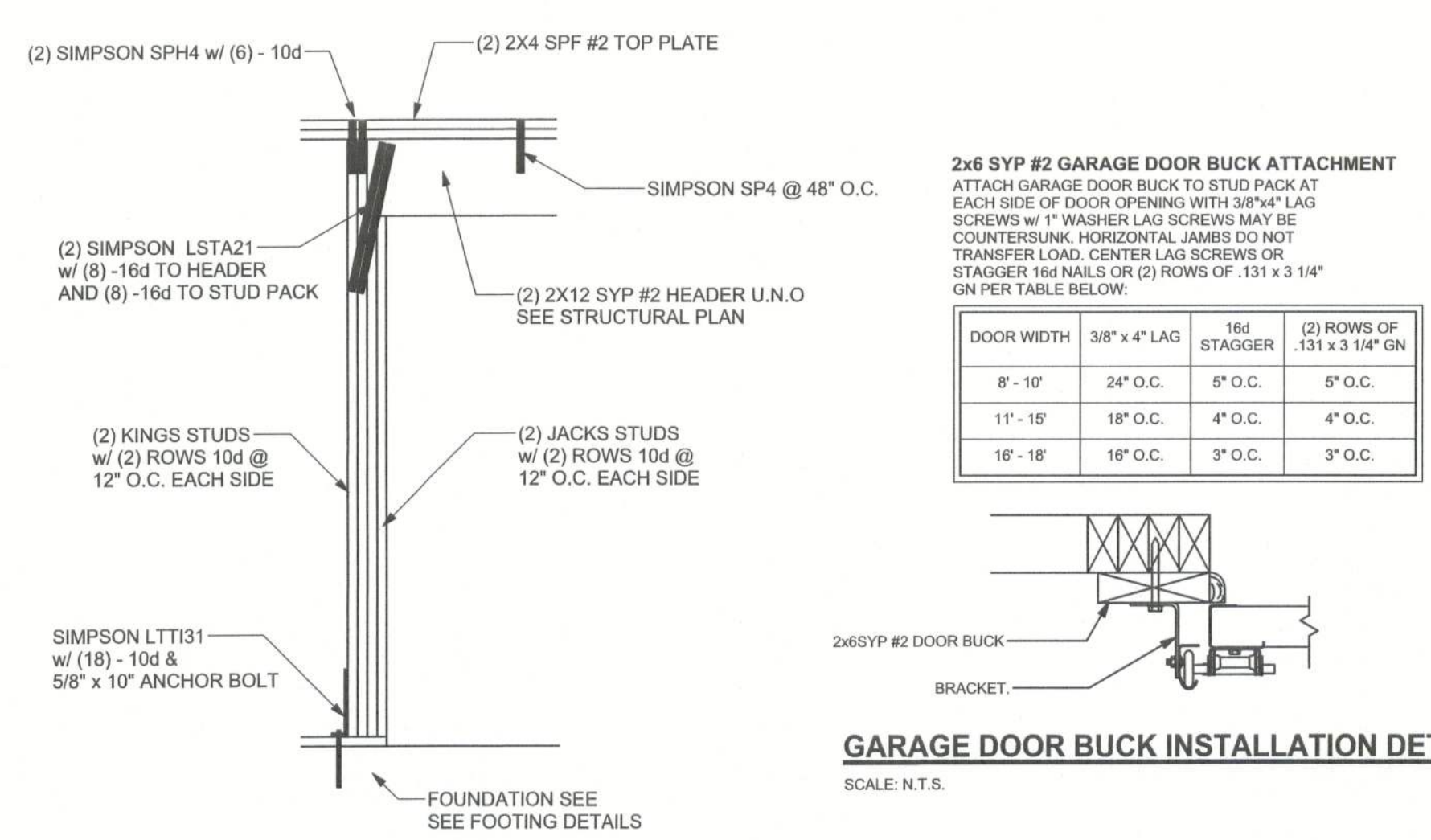
ONE STORY WALL SECTION  
SCALE: 3/4\"/>



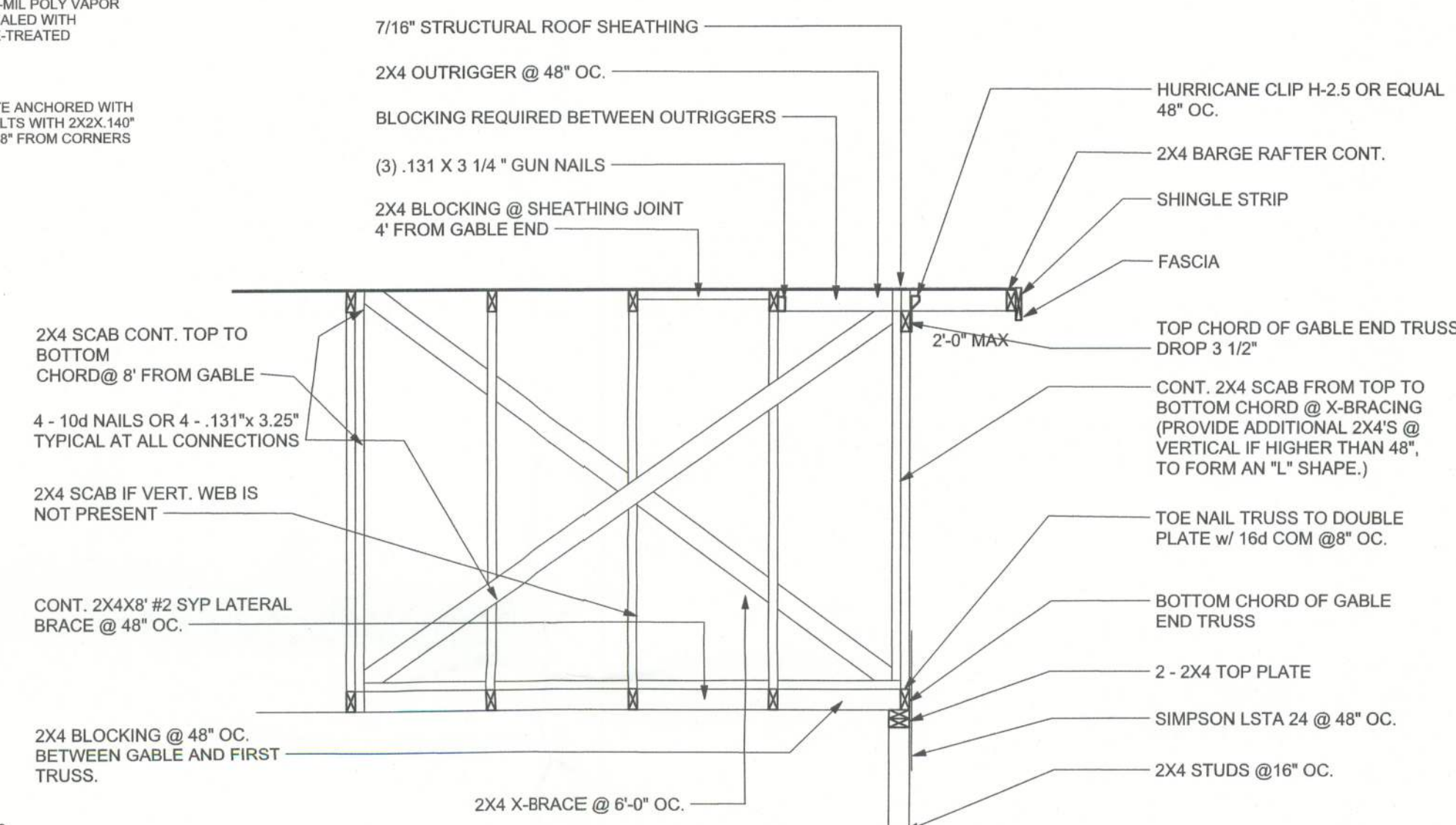
INTERIOR BEARING WALL  
SCALE: 1/2\"/>



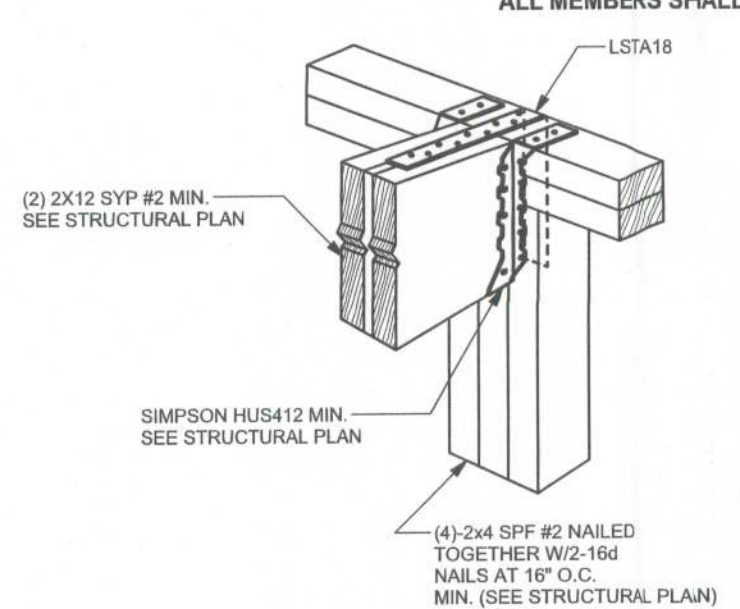
TYPICAL PORCH POST DETAIL  
SCALE: 1/2\"/>



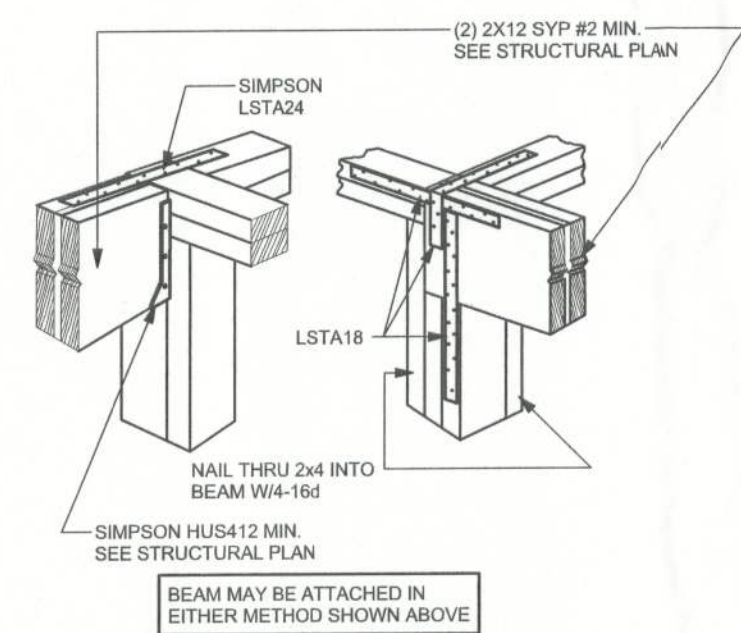
TYPICAL GARAGE DOOR HEADER STRAPING DETAIL  
SCALE: 1/2\"/>



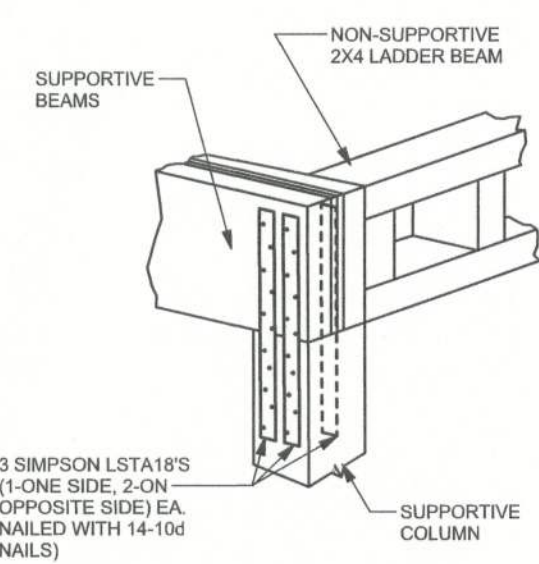
TYPICAL GABLE END (X-BRACING)  
ALL MEMBERS SHALL BE SYP



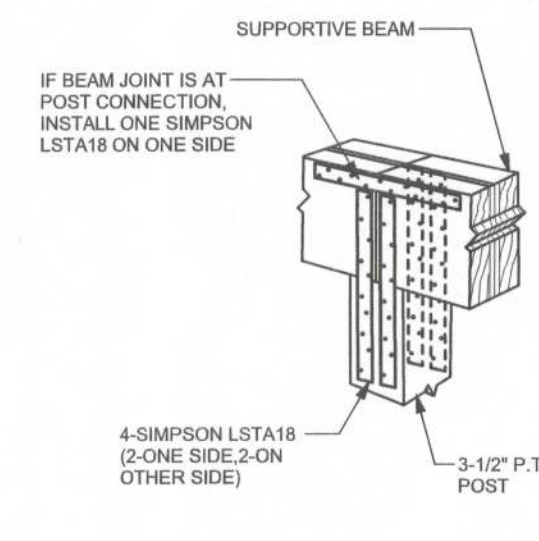
BEAM MID-WALL CONNECTION DETAIL  
SCALE: N.T.S.



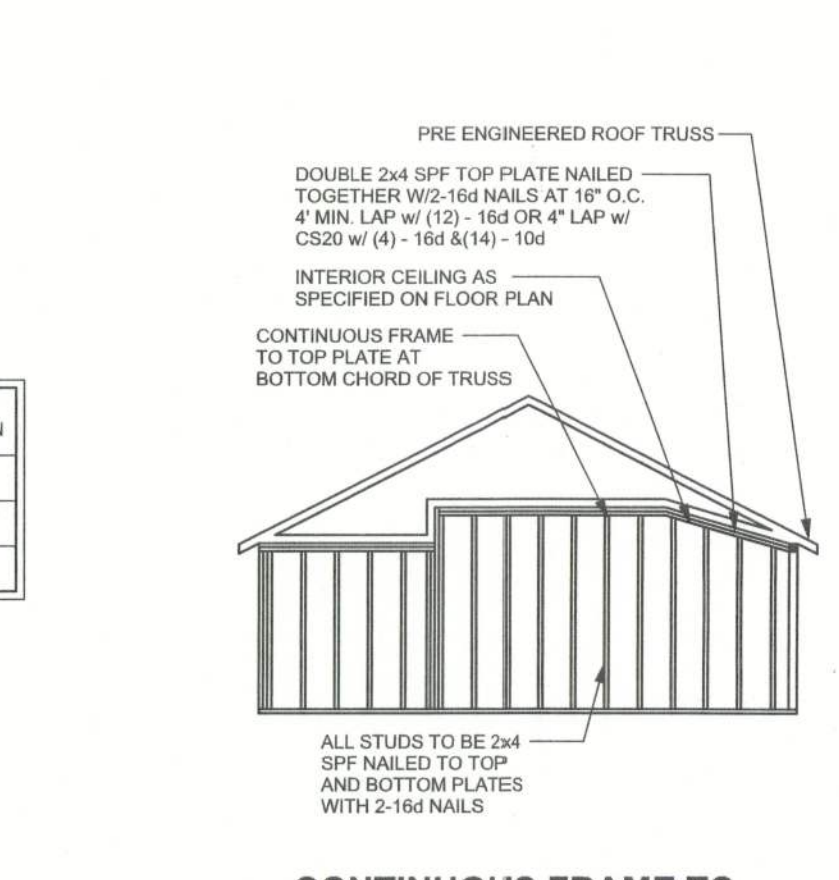
BEAM CORNER CONNECTION DETAIL  
SCALE: N.T.S.



SUPPORTIVE POST TO BEAM  
DETAIL FOR SINGLE BEAM  
SCALE: N.T.S.



SUPPORTIVE CENTER POST TO BEAM DETAIL  
SCALE: N.T.S.



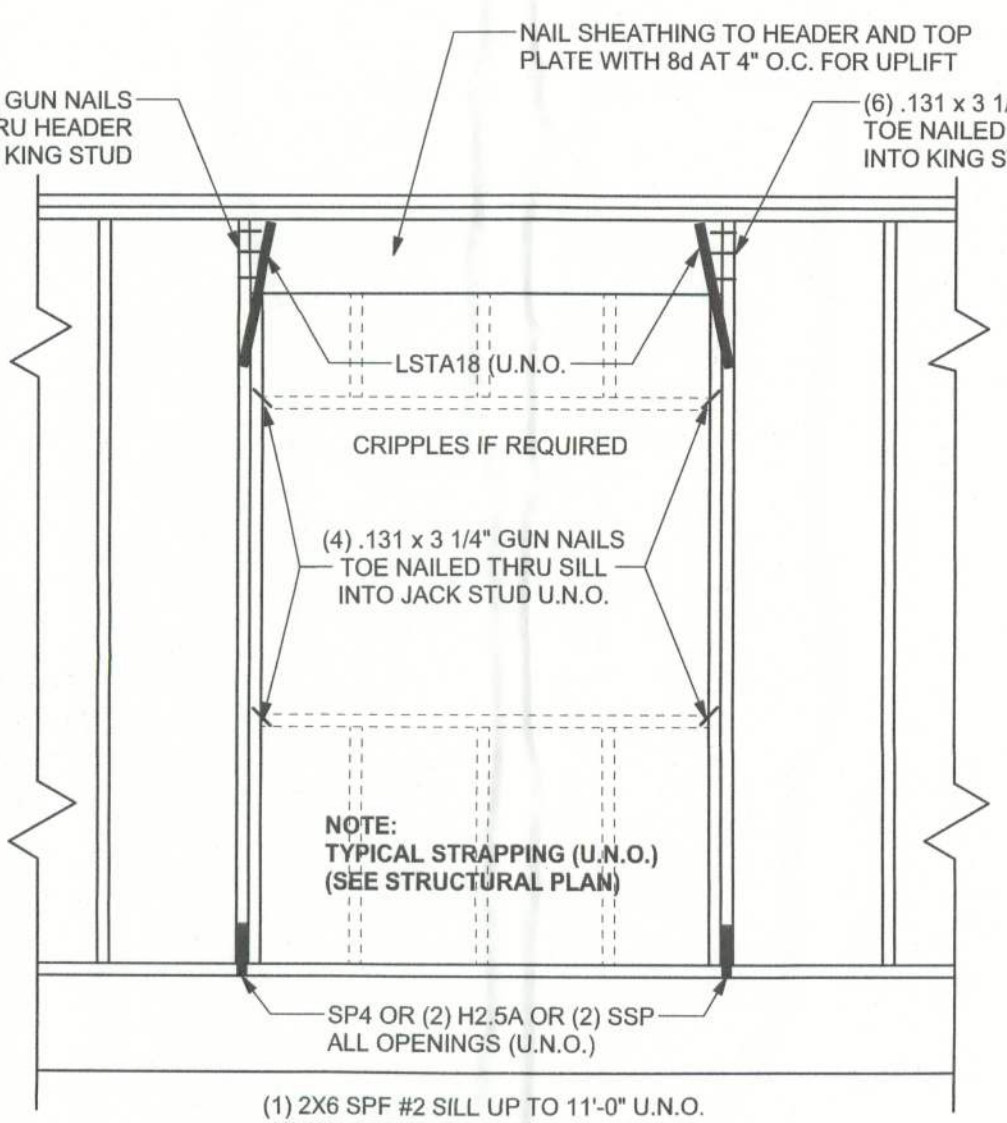
CONTINUOUS FRAME TO  
CEILING DIAPHRAGM DETAIL  
SCALE: N.T.S.

EXTERIOR WALL STUD TABLE FOR SPF #2 STUDS

(1) 2x4 @ 16\"/>	TO 10'-9\"/>
(1) 2x4 @ 12\"/>	TO 13'-0\"/>
(1) 2x6 @ 16\"/>	TO 18'-10\"/>
(1) 2x6 @ 12\"/>	TO 20'-0\"/>

GRADE & SPECIES TABLE

	Fb (psi)	E (10 <sup>6</sup> psi)
2x8 SYP #2	1200	1.6
2x10 SYP #2	1050	1.6
2x12 SYP #2	975	1.6
GLB 24F-V3 SP	2400	1.8
LSL TIMBERSTRAND	1700	1.7
LVL MICROLAM	1600	1.9
PSL PARALAM	2900	2.0



TYPICAL HEADER STRAPING DETAIL  
SCALE: 1/2\"/>

GENERAL NOTES:

TRUSSES: TRUSSES SHALL BE DESIGNED BY A FLORIDA LICENSED ENGINEER IN ACCORDANCE WITH THE FBC 2001. TRUSS ENGINEERING SHALL INCLUDE TRUSS DESIGN, PLACEMENT PLANS, TEMPORARY AND PERMANENT BRACING DETAILS, TRUSS-TO-TRUSS CONNECTIONS, AND UPLIFT AND REACTION LOADS FOR ALL BEARING LOCATIONS. TRUSS ENGINEERING IS THE RESPONSIBILITY OF THE TRUSS MANUFACTURER AND SHALL BE SIGNED & SEALED BY THE MANUFACTURERS DESIGN ENGINEER. IT IS THE BUILDERS RESPONSIBILITY TO VERIFY THE TRUSS DESIGNER FULLY SATISFIED ALL THE ABOVE REQUIREMENTS AND TO SELECT UPLIFT CONNECTIONS BASED ON TRUSS ENGINEERING UPLIFT AND PROVIDE FOOTINGS FOR INTERIOR BEARING WALLS. BUILDER IS TO FURNISH TRUSS ENGINEERING TO WIND LOAD ENGINEER FOR REVIEW OF TRUSS REACTIONS ON THE BUILDING STRUCTURE. STRAP 2x6 RAFTERS WITH MIN UPLIFT CONNECTION 415LB EACH END, 2x8 RAFTERS 700 LB EACH END.

SITE PREPARATION: SITE ANALYSIS AND PREPARATION IS NOT PART OF THIS PLAN

FOUNDATION: CONFIRM THAT THE FOUNDATION DESIGN & SITE CONDITIONS MEET GRAVITY LOAD REQUIREMENTS (ASSUME 1000 PSF BEARING CAPACITY UNLESS VISUAL OBSERVATION OR SOILS TEST PROVES OTHERWISE

CONCRETE: MINIMUM COMPRESSIVE STRENGTH OF CONCRETE AT 28 DAYS, F<sub>c</sub> = 3000 PSI.

WELDED WIRE REINFORCED SLAB: 6\"/>

FIBER CONCRETE SLAB: CONCRETE SLABS ON GROUND CONTAINING SYNTHETIC FIBER REINFORCEMENT. FIBER LENGTH 1/2 INCH TO 2 INCHES. DOSAGE AMOUNTS FROM 0.75 TO 1.5 POUNDS PER CUBIC YARD PER THE MANUFACTURERS RECOMMENDATIONS. FIBERS TO COMPLY WITH ASTM C 1116. SUPPLIER TO PROVIDE ASTM C 1116 CERTIFICATION OF COMPLIANCE WHEN REQUESTED BY BUILDING OFFICIAL.

REBAR: ASTM A 615, GRADE 60, DEFORMED BARS, F<sub>y</sub> = 60 KSI. ALL LAP SPLICES 40\"/>

GLULAM BEAMS: GLULAM BEAM, GLB, 24F-V3SP, F<sub>b</sub> = 2,400 ksi, E = 1,800,000 ksi. UNO. SUPPLIER MAY SUPPLY AN ALTERNATE BEAM WITH EQUAL PROPERTIES OR MAY SUBMIT THEIR OWN SIZING CALC.

ROOF SHEATHING: ALL ROOFS ARE HORIZONTAL DIAPHRAGMS; 7/16\"/>

STRUCTURAL CONNECTORS: MANUFACTURERS AND PRODUCT NUMBER FOR CONNECTORS, ANCHORS, AND REINFORCEMENT ARE LISTED FOR EXAMPLE NOT ENDORSEMENT. AN EQUIVALENT DEVICE OF THE SAME OR OTHER MANUFACTURER CAN BE SUBSTITUTED FOR ANY DEVICES LISTED IN THE EXAMPLE TABLE AS LONG AS IT MEETS THE REQUIRED LOAD CAPACITIES. MANUFACTURERS INSTALLATION INSTRUCTIONS MUST BE FOLLOWED TO ACHIEVE RATED LOADS.

ANCHOR BOLTS: A-307 ANCHOR BOLTS WITH MINIMUM EMBEDMENT AS SPECIFIED IN DRAWINGS BUT NO LESS THAN 7\"/>

WASHERS: WASHERS USED WITH 1/2\"/>

NAILS: ALL NAILS ARE COMMON NAILS UNLESS OTHERWISE SPECIFIED OR ACCEPTED BY FBC TEST REPORTS AS HAVING EQUAL STRUCTURAL VALUES.

BUILDER'S RESPONSIBILITY

THE BUILDER AND OWNER ARE RESPONSIBLE FOR THE FOLLOWING, WHICH ARE SPECIFICALLY NOT PART OF THE WIND LOAD ENGINEER'S SCOPE OF WORK.

CONFIRM SITE CONDITIONS, FOUNDATION BEARING CAPACITY, GRADE AND BACKFILL HEIGHT, WIND SPEED AND DEBRIS ZONE, AND FLOOD ZONE.

PROVIDE MATERIALS AND CONSTRUCTION TECHNIQUES, WHICH COMPLY WITH FBC 2001 REQUIREMENTS FOR THE STATED WIND VELOCITY AND DESIGN PRESSURES.

PROVIDE A CONTINUOUS LOAD PATH FROM TRUSSES TO FOUNDATION. IF YOU BELIEVE THE PLAN OMTS A CONTINUOUS LOAD PATH CONNECTION, CALL THE WIND LOAD ENGINEER IMMEDIATELY.

VERIFY THE TRUSS MANUFACTURER'S SEALED ENGINEERING INCLUDES TRUSS DESIGN, PLACEMENT PLANS, TEMPORARY AND PERMANENT BRACING DETAILS, TRUSS-TO-TRUSS CONNECTIONS, AND UPLIFT AND REACTION LOADS FOR ALL BEARING LOCATIONS.

ROOF SYSTEM DESIGN

THE SEAL ON THESE PLANS FOR COMPLIANCE WITH FBC 2001, SECTION 1606 IS BASED ON REACTIONS, UPLIFTS, AND BEARING LOCATIONS IN TRUSS ENGINEERING SUBMITTED TO THE WIND LOAD ENGINEER. IT IS THE RESPONSIBILITY OF THE BUILDER TO CHECK ALL DETAILS OF THE COMPLETE ROOF SYSTEM DESIGN SUBMITTED BY THE TRUSS MANUFACTURER AND HAVE IT SIGNED, AND SEALED BY A DESIGN PROFESSIONAL FOR CORRECT APPLICATION OF FBC 2001 REQUIRED LOADS AND ANY SPECIAL LOADS. THE BUILDER IS RESPONSIBLE TO REVIEW EACH INDIVIDUAL TRUSS MEMBER AND THE TRUSS ROOF SYSTEM AS A WHOLE AND TO PROVIDE RESTRAINT FOR ANY LATERAL BRACING. THE BUILDER SHOULD USE CARE CHECKING THE ROOF DESIGN BECAUSE THE WIND LOAD ENGINEER IS SPECIFICALLY NOT RESPONSIBLE FOR THE TRUSS LAYOUT WHICH WAS CREATED BY THE TRUSS MANUFACTURER AND THE TRUSS DESIGNER ALSO DENIES RESPONSIBILITY FOR THE LAYOUT PER NOTES ON THEIR SEALED TRUSS SHEETS.

MASONRY NOTES:

MASONRY CONSTRUCTION AND MATERIALS FOR THIS PROJECT SHALL CONFORM TO ALL REQUIREMENTS OF "SPECIFICATION FOR MASONRY STRUCTURES" (ACI 530.1/ASCE 6/TMS 602). THE CONTRACTOR AND MASON MUST IMMEDIATELY, BEFORE PROCEEDING, NOTIFY THE ENGINEER OF ANY CONFLICTS BETWEEN ACI 530.1-02 AND THESE DESIGN DRAWINGS. ANY EXCEPTIONS TO ACI 530.1-02 MUST BE APPROVED BY THE ENGINEER IN WRITING.

	Specific Requirements
1.4A Compressive strength	8\"/>
2.1 Mortar	ASTM C 270, Type N, UNO
2.2 Grout	ASTM C 476, admixtures require approval
2.3 CMU standard	ASTM C 90-02, Normal weight, Hollow, medium surface finish, 8\"/>
2.3 Clay brick standard	ASTM C 216-02, Grade SW, Type FBS, 5.5\"/>
2.4 Reinforcing bars, #3 - #11	ASTM 615, Grade 60, F <sub>y</sub> = 60 ksi, Lap splices min 48 bar dia. (30\"/>
2.4F Coating for corrosion protection	Anchors, sheet metal ties completely embedded in mortar or grout, ASTM A525, Class G60, 0.60 oz/lb or 304SS
2.4F Coating for corrosion protection	Joint reinforcement in walls exposed to moisture or wire ties, anchors, sheet metal ties not completely embedded in mortar or grout, ASTM A153, Class B2, 1.50 oz/lb or 304SS
3.3.E.2 Pipes, conduits, and accessories	Any not shown on the project drawings require engineering approval
3.3.E.7 Movement joints	Contractor assumes responsibility for type and location of movement joints if not detailed on project drawings.

ANCHOR TABLE

OBTAIN UPLIFT REQUIREMENTS FROM TRUSS MANUFACTURER'S ENGINEERING

UPLIFT LBS. SYP	UPLIFT LBS. SPF	TRUSS CONNECTOR*	TO PLATES	TO RAFTER/TRUSS	TO STUDS
< 420	< 245	H5A	3-8d	3-8d	
< 455	< 265	H5	4-8d	4-8d	
< 360	< 235	H4	4-8d	4-8d	
< 455	< 320	H3	4-8d	4-8d	
< 415	< 365	H2.5	5-8d	5-8d	
< 600	< 535	H2.5A	5-8d	5-8d	
< 950	< 820	H6	8-8d	8-8d	
< 745	< 565	H6	5-10d, 1 1/2"	5-10d, 1 1/2"	
< 1465	< 1050	H14-1	13-8d	12-8d, 1 1/2"	
< 1465	< 1050	H14-2	15-8d	12-8d, 1 1/2"	
< 990	< 850	H10-1	8-8d, 1 1/2"	8-8d, 1 1/2"	
< 760	< 655	H10-2	6-10d	6-10d	
< 1470	< 1265	H16-1	10-10d, 1 1/2"	2-10d, 1 1/2"	
< 1470	< 1265	H16-2	10-10d, 1 1/2"	2-10d, 1 1/2"	
< 1000	< 860	MTS24C	7-10d 1 1/2"	7-10d 1 1/2"	
< 1450	< 1245	HTS24	12-10d 1 1/2"	12-10d 1 1/2"	
< 2900	< 2490	2 - HTS24			
< 2050	< 1785	LG2	14-16d	14-16d	
HEAVY GIRDER TIEDOWNS*					TO FOUNDATION
< 3965	< 3330	MGT		22-10d	1-5/8\"/>
< 10980	< 6485	HGT-2		16-10d	2-5/8\"/>
< 10530	< 9035	HGT-3		16-10d	2-5/8\"/>
< 9250	< 9250	HGT-4		16-10d	2-5/8\"/>
STUD STRAP CONNECTOR*					TO STUDS
< 435	< 435	SSP DOUBLE TOP PLATE	3-10d		4-10d
< 455	< 420	SSP SINGLE SILL PLATE	1-10d		4-10d
< 825	< 825	DSP DOUBLE TOP PLATE	6-10d		8-10d
< 825	< 600	DSP SINGLE SILL PLATE	2-10d		8-10d
< 885	< 760	SP4			6-10d, 1 1/2"
< 1240	< 1065	SP4H			10-10d, 1 1/2"
< 885	< 760	SP6			6-10d, 1 1/2"
< 1240	< 1065	SP6H			10-10d, 1 1/2"
< 1235	< 1165	LSTA18	14-10d		
< 1235	< 1235	LSTA21	16-10d		
< 1030	< 1030	CS20	16-8d		
< 1705	< 1705	CS16	28-8d		
STUD ANCHORS*				TO STUDS	TO FOUNDATION
< 1350	< 1305	LTT19	8-16d		1/2\"/>
< 2310	< 2310	LTT31	18-10d, 1 1/2"		1/2\"/>
< 2775	< 2570	HD2A	2-5/8\"/>		5/8\"/>
< 4175	< 3695	HTT16	18-16d		5/8\"/>
< 1400	< 1400	PAHD42	16-16d		
< 3335	< 3335	HPAHD22	16-16d		
< 2200	< 2200	ABU44	12-16d		1/2\"/>
< 2300	< 2300	ABU66	12-16d		1/2\"/>
< 2320	< 2320	ABU88	18-16d		2-5/8\"/>

DESIGN DATA

WIND LOADS PER FLORIDA BUILDING CODE 2001, SECTION 1606.2

(ENCLOSED SIMPLE DIAPHRAGM BUILDINGS WITH FLAT, HIPPED, OR GABLE ROOFS; MEAN ROOF HEIGHT NOT EXCEEDING LEAST HORIZONTAL DIMENSION OR 60 FT; NOT ON UPPER HALF OF HILL OR ESCARPMENT 60FT IN EXP. B, 30FT IN EXP. C AND >10% SLOPE AND UNOBSTRUCTED UPWIND FOR 50x HEIGHT OR 1 MILE WHICHEVER IS LESS.)

- BUILDING IS NOT IN THE HIGH VELOCITY HURRICANE ZONE  
BUILDING IS NOT IN THE HIGH WIND-BORNE DEBRIS REGION  
1.) BASIC WIND SPEED = 110 MPH  
2.) WIND EXPOSURE = B  
3.) WIND IMPORTANCE FACTOR = 1.0  
4.) BUILDING CATEGORY = II  
5.) ROOF ANGLE = 10-45 DEGREES  
6.) MEAN ROOF HEIGHT = <30 FT  
7.) INTERNAL PRESSURE COEFFICIENT = N/A (ENCLOSED BUILDING, 1606.2)  
8.) COMPONENTS AND CLADDING DESIGN WIND PRESSURES (FBC TABLE 1606.2 B8C)

Zone	Effective Wind Area (ft <sup>2</sup> )	
1	19.9 - 21.8	18.1 - 21.8
2	19.9 - 25.5	18.1 - 21.8
2 0'Hg		40.6 - 40.6
3	19.9 - 25.5	18.1 - 21.8
3 0'Hg		68.3 - 42.4
4	21.8 - 23.6	18.5 - 20.4
5	21.8 - 29.1	18.5 - 22.6
Doors & Windows Worst Case (Zone 5, 10 ft <sup>2</sup> )	21.8	-29.1
8x7 Garage Door		19.5 - 22.9
16x7 Garage Door		18.5 - 21.0

DESIGN LOADS	
FLOOR	40 PSF (ALL OTHER DWELLING ROOMS) 30 PSF (SLEEPING ROOMS) 30 PSF (ATTICS WITH STORAGE) 10 PSF (ATTICS WITHOUT STORAGE, <3:12)
ROOF	20 PSF (FLAT OR <4:12) 16 PSF (4:12 TO <12:12) 12 PSF (12:12 AND GREATER)
STAIRS	40 PSF (ONE & TWO FAMILY DWELLINGS)
SOIL BEARING CAPACITY	1000PSF
NOT IN FLOOD ZONE (BUILDER TO VERIFY)	

REVISIONS	



WINDLOAD ENGINEER: Mark Disoway, P.E. No. 53915, P.O.B. 868, Lake City, FL 32056, 386-754-5419

DIMENSIONS: Stated dimensions supercede scaled dimensions. Refer all questions to Mark Disoway, P.E. for resolution. Do not proceed without clarification.

COPYRIGHTS AND PROPERTY RIGHTS: Mark Disoway, P.E. hereby expressly reserves its common law copyrights and property right in these instruments of service. This document is not to be reproduced, altered or copied in any form or manner without first the express written permission and consent of Mark Disoway.

CERTIFICATION: I hereby certify that I have examined this plan, and that the applicable portions of the plan, relating to wind engineering comply with section 1606, Florida building code 2001, to the best of my knowledge.

LIMITATION: This design is valid for one building, at specified location.

MARK DISOWAY  
P.E. 53915  
*Mark Disoway*  
20 SEP 05  
SEAL

ERKINGER HOME BUILDERS, INC.

Tim & Tina Morris Residence

ADDRESS: Lot 6 Heritage Hills S/D Columbia County, Florida

Mark Disoway P.E.  
P.O. Box 868  
Lake City, Florida 32056  
Phone: (386) 754 - 5419  
Fax: (386) 269 - 4871

PRINTED DATE: September 20, 2005

DRAWN BY: STRUCTURAL BY: David Disoway

FINALS DATE: 20 / Sep / 05

JOB NUMBER: 508165

DRAWING NUMBER

S-1  
OF 6 SHEETS