

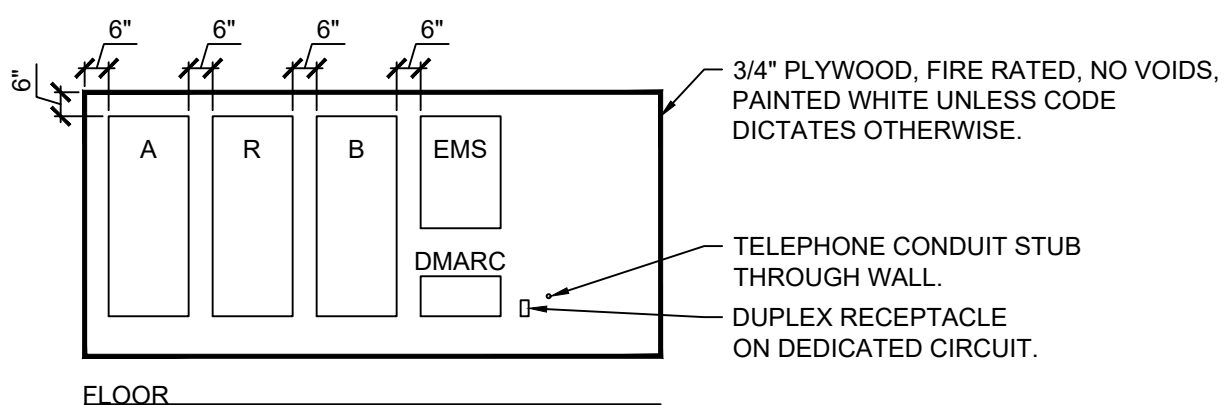
LEGEND	
SYMB	DESCRIPTION
	BUZZER - TORK MDL #TA725 W/ TRANSFORMER MDL#TA592
	COMMERCIAL GRADE PUSH BUTTON
	125V NEMA 5-20R DUPLEX
	125/250V NEMA L14-20-R 4 PRONG TWIST LOCK
	125V NEMA 5-20R QUAD
	DISCONNECT
	BLACK MAGIC POWER POLE
	PHONE JACK
	RJ-11, RJ-45 DATA JACK, PHONE COMBO
A-23	PANEL-CIRCUIT NUMBER
\$m	PROVIDE OCCUPANCY LIGHT SENSOR- LEVITON ODS10-IDW
\$	20 AMP TOGGLE SWITCH
NL	NIGHT LIGHT CIRCUIT

- PLAN NOTES:
1. J-BOX FOR HAND DRYER, COORDINATE EXACT LOCATION WITH ARCHITECTURAL DRAWINGS. COORDINATE ALL REQUIREMENTS WITH SUPPLIER/INSTALLER.
  2. ALARM KEYPAD/PANEL.

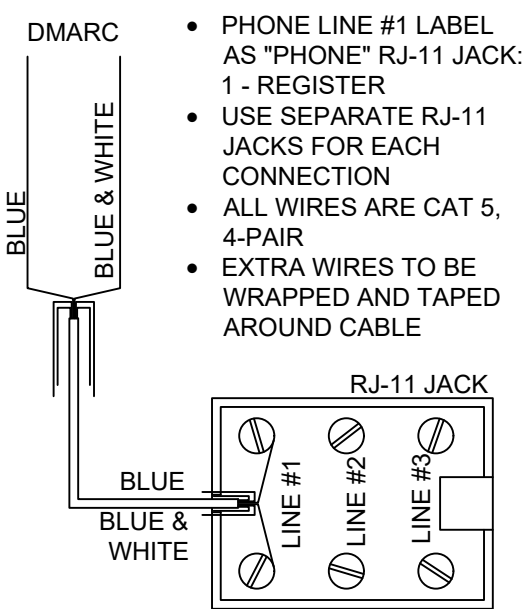
ELECTRICAL SPECIFICATIONS

- A. ALL WIRING SHALL SHALL BE CONTAINED IN CONDUIT OF PROPER SIZE.
- B. ALL WIRING SHALL CONFORM TO LOCAL, STATE AND FEDERAL CODES.
- C. SERVICE IS TO BE A MINIMUM 400 AMP, 3 PHASE (PREFERRED), 600 AMP, 1 PHASE OR LARGER IF REQUIRED BY CODE OR ELECTRICAL LOAD.
- D. REQUIRED CUSTOM BUILT POWER POLE ASSEMBLIES AVAILABLE FROM D&P CUSTOM LIGHTS & PRODUCTS INC., PHONE: (800) 251-2200 OR (615) 350-7800, 7111 COCKRILL BEND INDUSTRIAL ROAD, NASHVILLE, TN 37209. SEE E3.1.
- E. EXTERIOR EXPOSED PHONE LINES TO BE INSTALLED IN RIGID CONDUIT. PROVIDE EMERSON 3/4" X 5-FT. METALLIC CABLE U-GUARD #755, OR EQUAL..
- F. ELECTRICAL PANEL TO BE LABELED CORRECTLY WITH LEGIBLE PRINT.
- G. LOW VOLTAGE VENDOR TO PROVIDE AND INSTALL ONE (1) 24 GA., 4 TWISTED-PAIR, CATEGORY-FIVE (CAT5) DATA CABLE WITH MODULAR COMBO RJ-11/RJ-45 JACK AT MANAGER'S OFFICE. CABLE TO BE RUN FROM JACK TO DATA HUB LOCATION WITH 6'-0" LEFT COILED FOR INSTALLATION TO DATA HUB. A RJ-45 MALE FITTING SHOULD BE CRIMPED ON THIS END. DOLLAR GENERAL STORE OPENING TEAM WILL MAKE FINAL CONNECTION INTO THE DATA HUB
- H. PROVIDE 1 1/2" EMT CONDUIT TO ACT AS ACCESS SLEEVE TO ALLOW PHONE COMPANY TO TERMINATE AT DMARC. CONTRACTOR TO PROVIDE AND INSTALL PHONE WIRING & RJ-11 PHONE JACK FOR COMPLETED WORKING SYSTEM PRIOR TO PHONE COMPANY FINAL HOOK UP.
- I. ALL 120 VOLT OUTDOOR RECEPTACLES TO HAVE "WET LOCATION - IN USE" COVERS.
- J. ALL CONDUCTORS TO BE COPPER, #12 AWG MINIMUM SIZE, OR AS REQUIRED BY LOAD AND OVER CURRENT PROTECTION.
- K. SEE EMS SHEETS EMS1 AND EMS2 FOR ENERGY MANAGEMENT SYMBOLS AND INFORMATION.
- L. ELECTRICIAN TO PROVIDE 1 1/2" CONDUIT WITH PULL STRINGS FOR SATELLITE LOCATION.
- M. ALL POWER AND DATA TO BE ROUTED OVERHEAD, UNDER SLAB NOT ALLOWED.
- N. WITHIN 30 DAYS OF SYSTEM ACCEPTANCE, RECORD DRAWINGS OF THE INSTALLATION SHALL BE PROVIDED TO THE BUILDING OWNER, INCLUDING:
- N.A. A SINGLE-LINE DIAGRAM OF THE BUILDING ELECTRICAL DISTRIBUTION SYSTEM.
- N.B. FLOOR PLANS INDICATING LOCATION AND AREA SERVED FOR ALL DISTRIBUTION.
- O. OPERATING AND MAINTENANCE MANUALS SHALL BE PROVIDED TO THE BUILDING OWNER, AND SHALL INCLUDE THE FOLLOWING AT A MINIMUM:
- O.A. SUBMITTAL DATA STATING EQUIPMENT RATING AND SELECTED OPTIONS FOR EACH PIECE OF EQUIPMENT REQUIRING MAINTENANCE, EACH PIECE OF LIGHTING EQUIPMENT, AND ALL LIGHTING CONTROLS.
- O.B. OPERATIONS MANUALS AND MAINTENANCE MANUALS FOR EACH PIECE OF EQUIPMENT REQUIRING MAINTENANCE AND EACH PIECE OF LIGHTING EQUIPMENT. REQUIRED ROUTINE MAINTENANCE, CLEANING, AND RELAPING ACTIONS SHALL BE CLEARLY IDENTIFIED.
- O.C. A NARRATIVE OF HOW EACH SYSTEM IS INTENDED TO OPERATE, INCLUDING RECOMMENDED SETPOINTS.
- O.D. A SCHEDULE FOR INSPECTING AND RECALIBRATING ALL LIGHTING CONTROLS.
- O.E. NAMES AND ADDRESSES OF AT LEAST ONE QUALIFIED SERVICE AGENCY.
- P. A REGISTERED DESIGN PROFESSIONAL SHALL PROVIDE EVIDENCE THAT THE LIGHTING CONTROL SYSTEMS HAVE BEEN TESTED IN ACCORDANCE WITH FBC C408.3.1-1-3.1.3. DOCUMENTATION SHALL BE PROVIDED TO THE BUILDING OWNER OR AUTHORIZED AGENT WITHIN 90 DAYS OF RECEIPT OF THE CERTIFICATE OF OCCUPANCY. REPORT SHALL INCLUDE THE FOLLOWING:
- P.A. RESULTS OF FUNCTIONAL PERFORMANCE TESTS.
- P.B. DISPOSITION OF DEFICIENCIES FOUND DURING TESTING, INCLUDING DETAILS OF CORRECTIVE MEASURES USED OR PROPOSED.

1 POWER PLAN  
E1.1 SCALE: 1/8" = 1'-0" NORTH

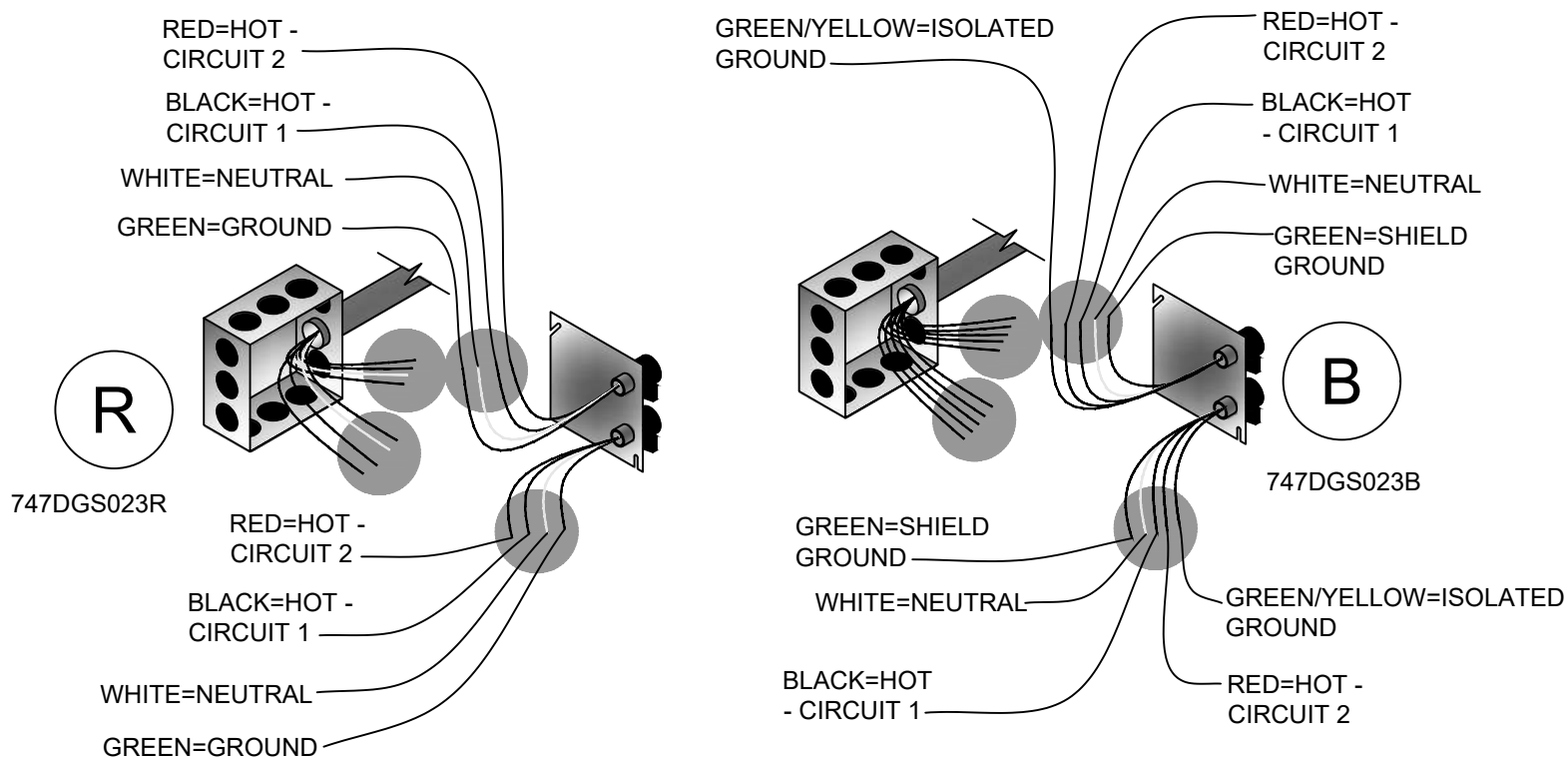


2 ELECTRICAL PANEL ELEVATION  
E1.1 SCALE: N.T.S.



5 REGISTER PHONE WIRING  
E1.1 SCALE: N.T.S.

DUAL CIRCUIT WIRING		
747DGS023R	COLOR	747DGS023B
HOT - CIRCUIT 1	BLACK	HOT - CIRCUIT 1
HOT - CIRCUIT 2	RED	HOT - CIRCUIT 2
NEUTRAL	WHITE	NEUTRAL
GROUND	GREEN	GROUND
N/A	GREEN/YELLOW	ISOLATED GROUND



REGISTER ELECTRICAL COMPONENTS			
QTY	PART NUMBER	DESCRIPTION	VENDOR
4	747DGS023B	DUAL CIRCUIT POWER KIT WITH ISOLATED GROUND	D & P
4	747DGS023R	DUAL CIRCUIT POWER KIT	D & P
4	747DGS044-12BK	12' 2CH REGULAR POLE W/2-C & 1-D CONNECTOR DRW #2004-12	
4	747DGS032A	10' CABLE KIT (SET OF 4 WHIPS)	

3 REGISTER ELECTRICAL DETAIL  
E1.1 SCALE: N.T.S.

\*NOTE: BEFORE ORDERING AND INSTALLATION OF ELECTRICAL COMPONENTS FOR REGISTERS, CONSULT FINAL FIXTURE PLAN FOR NUMBER AND LOCATION.

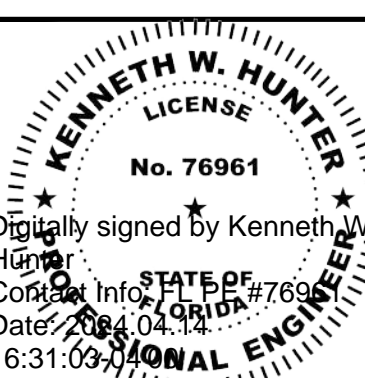
- MAXIMUM CIRCUITS FOR REGISTERS:
- CIRCUITS AT MAIN REGISTER - (9) 110V
  - CIRCUITS AT ISLAND REGISTER - (3) 110V

This item has been electronically signed and sealed by Kenneth W. Hunter, P.E. on 4/14/24 using a Digital Signature.

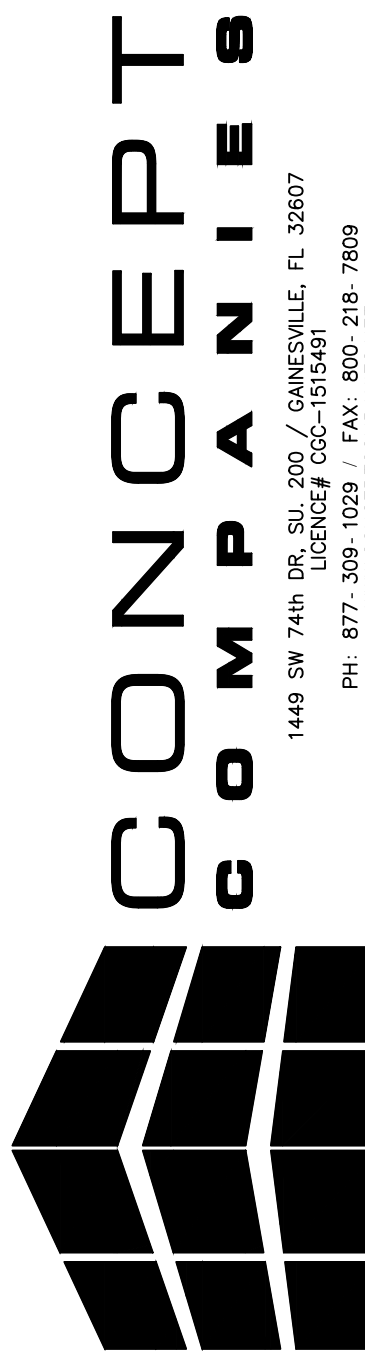
Printed copies of this document are not considered signed and sealed and the signature must be verified on any electronic copies.

**HDC** (352) 238-6366  
www.hdceng.com  
696 1st Ave N, Ste. 200  
St. Petersburg, FL 33701  
FL CA #31946  
**Hunter Design & CONSULTING** GA CA #PEF007171

**KENNETH W. HUNTER, P.E.**  
PROFESSIONAL ENGINEER  
696 1ST AVE N, STE 200  
ST. PETERSBURG, FL 33701  
PE #76961



THESE DRAWINGS HAVE BEEN PREPARED IN PART, BASED UPON INFORMATION FURNISHED BY OTHERS. THE DESIGNER ASSUMES NO RESPONSIBILITY FOR THE ACCURACY OF THESE DRAWINGS FOR ANY ERRORS OR OMISSIONS THAT MAY HAVE BEEN INCORPORATED INTO THE DESIGN. THE DESIGNER ON THIS DOCUMENT ARE ADVISED TO OBTAIN VERIFICATION OF APPLICABLE CODES AND ORDINANCES. SUPERINTENDENTS ARE INFORMATION, DESIGN AND BUILDING TECHNIQUES HELD WITHIN ARE THE EXCLUSIVE PROPERTY OF THE PARTIES NOTED ON THIS TITLE BLOCK.



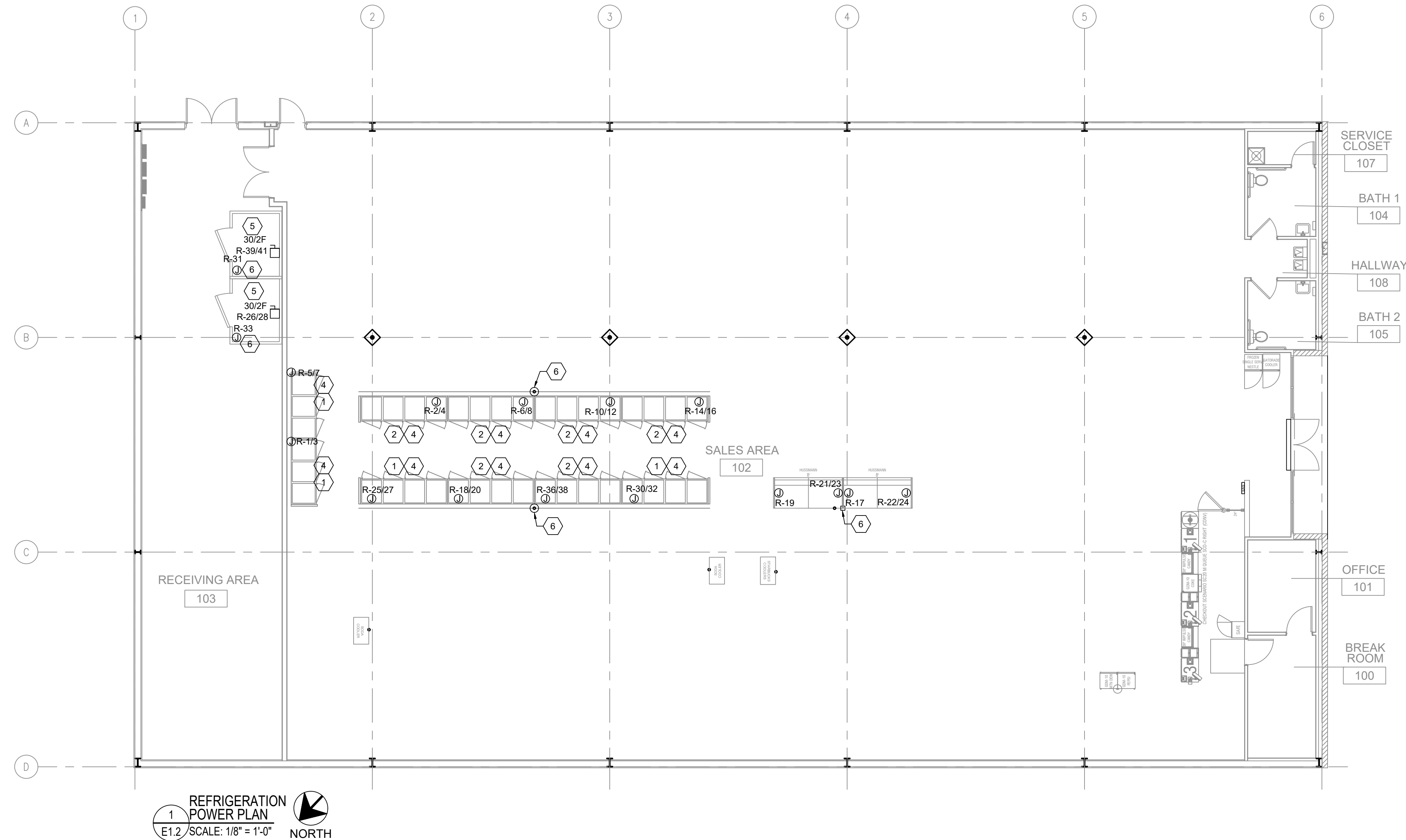
**DOLLAR GENERAL®**

US HWY 27  
FT WHITE, FL 32038  
STORE # 28861  
2023 PROTOTYPE - PLAN 'DGM1' - 10,640 SQ. FT.

DRAWING DATE: / DRAWN BY:  
4/5/24 - KWH  
REVISION DATE: / REVISED BY:  
PROJECT NUMBER:  
4000.249  
DRAWING TITLE:  
POWER PLAN  
SHEET NO.

**E1.1**

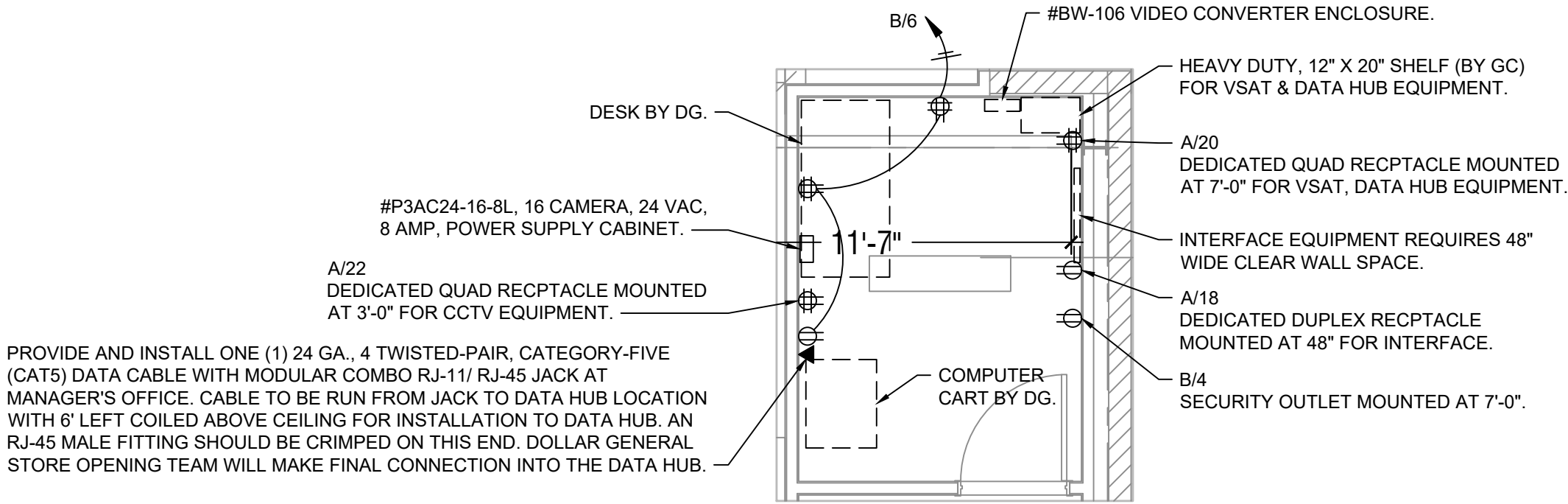
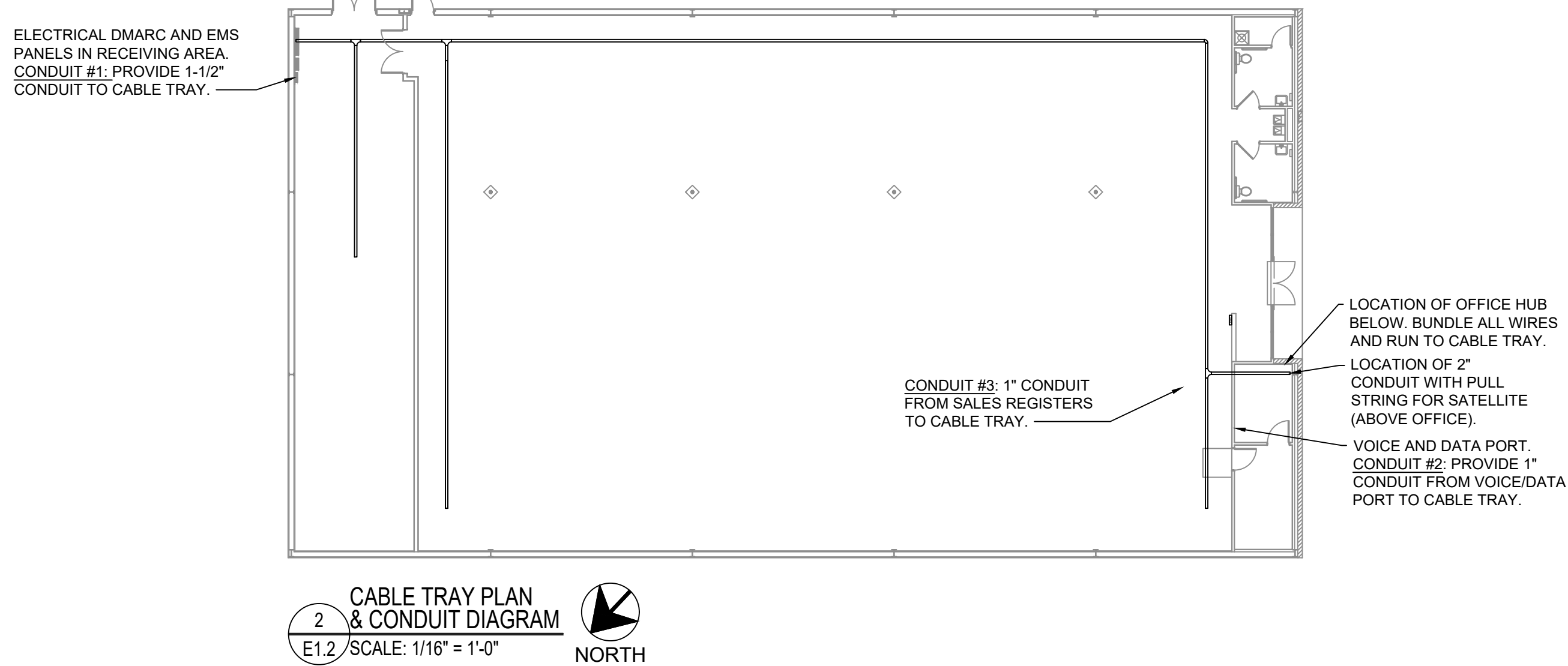




LEGEND	
SYMB	DESCRIPTION
	BUZZER - TORK MDL #TA725 W/ TRANSFORMER MDL#TA582
	COMMERCIAL GRADE PUSH BUTTON
	125V NEMA 5-20R DUPLEX
	125/250V NEMA L14-20-R 4 PRONG TWIST LOCK
	125V NEMA 5-20R QUAD
	DISCONNECT
	BLACK MAGIC POWER POLE
	PHONE JACK
	RJ-11, RJ-45 DATA JACK, PHONE COMBO
A-23	PANEL-CIRCUIT NUMBER
\$m	PROVIDE OCCUPANCY LIGHT SENSOR-LEVITON OD510-IDW
\$	20 AMP TOGGLE SWITCH
NL	NIGHT LIGHT CIRCUIT

- GENERAL NOTES:
- CONFIRM POWER REQUIREMENTS WITH REFRIGERATION PRIOR TO WORK.
  - MOUNT ALL REFRIGERATOR OUTLETS AT 12" AFF.

- PLAN NOTES:
- PROVIDE 208V, 1 PHASE CONNECTION TO A J-BOX AT 90" AFF WITH (3)#12 CU. & #12 GROUND IN 3/4"C. R.C. TO PROVIDE AND INSTALL 30A-2NF DISCONNECT SWITCH AND WIRE FROM DISCONNECT SWITCH TO EQUIPMENT CONNECTIONS.
  - PROVIDE 208V, 1 PHASE CONNECTION TO A J-BOX AT 90" AFF WITH (3)#8 CU. & #10 GROUND IN 1"C. R.C. TO PROVIDE AND INSTALL 60A-2NF DISCONNECT SWITCH AND WIRE FROM DISCONNECT SWITCH TO EQUIPMENT CONNECTIONS.
  - PROVIDE 208V, 1 PHASE CONNECTION TO A J-BOX AT 90" AFF WITH (3)#10 CU. & #10 GROUND IN 3/4"C. R.C. TO PROVIDE AND INSTALL 30A-2NF DISCONNECT SWITCH AND WIRE FROM DISCONNECT SWITCH TO EQUIPMENT CONNECTIONS.
  - MOUNT J-BOX 11" FROM THE RIGHT SIDE OF EACH UNIT. CONFIRM EXACT LOCATION WITH REFRIGERATION VENDOR PRIOR TO WORK (TYP). COORDINATE ELECTRICAL AND ALL REQUIREMENTS WITH VENDOR/SUPPLIER.
  - J-BOX FOR CONNECTION TO LIGHTS/DOOR HEATER. COORDINATE ALL REQUIREMENTS WITH SUPPLIER/INSTALLER.
  - GROUP AND ROUTE RELATED COOLER/FREEZER CONDUITS OVERHEAD TO A SINGLE DROP LOCATION FOR DISTRIBUTION. SUPPORT CONDUITS USING CONDUIT RACK. RUN EXPOSED CONDUIT PARALLEL AND PERPENDICULAR TO WALLS.

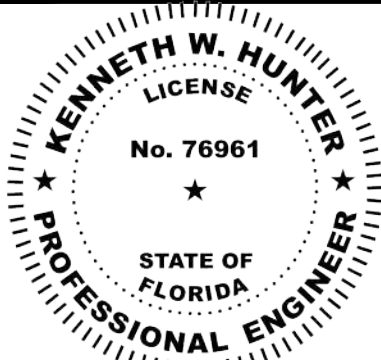


This item has been electronically signed and sealed by Kenneth W. Hunter, P.E. on 4/14/24 using a Digital Signature.

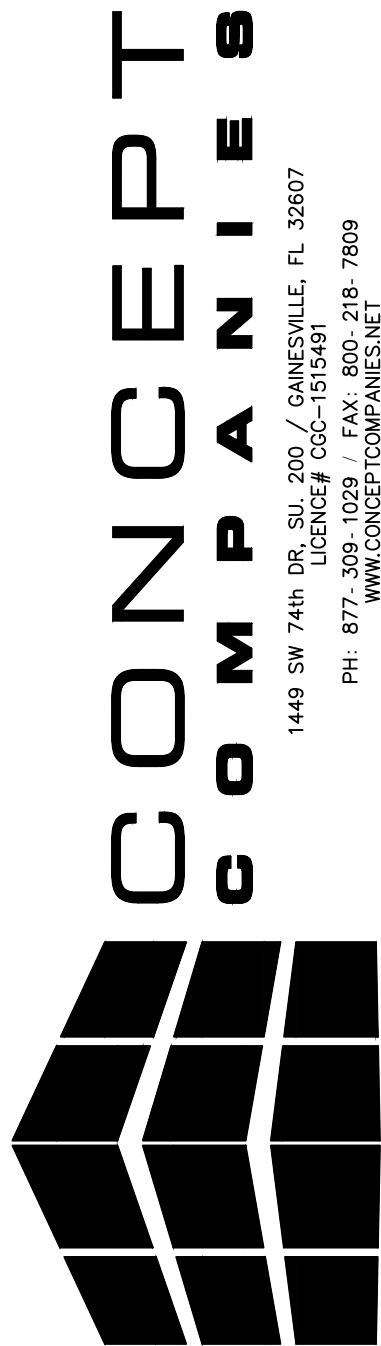
Printed copies of this document are not considered signed and sealed and the signature must be verified on any electronic copies.

**HDC** (352) 238-6366  
www.hdceng.com  
696 1st Ave N, Ste. 200  
St. Petersburg, FL 33701  
FL CA #31946  
**Hunter Design & CONSULTING** GA CA #PEF007171

**KENNETH W. HUNTER, P.E.**  
PROFESSIONAL ENGINEER  
696 1ST AVE N, STE 200  
ST. PETERSBURG, FL 33701  
PE #76961



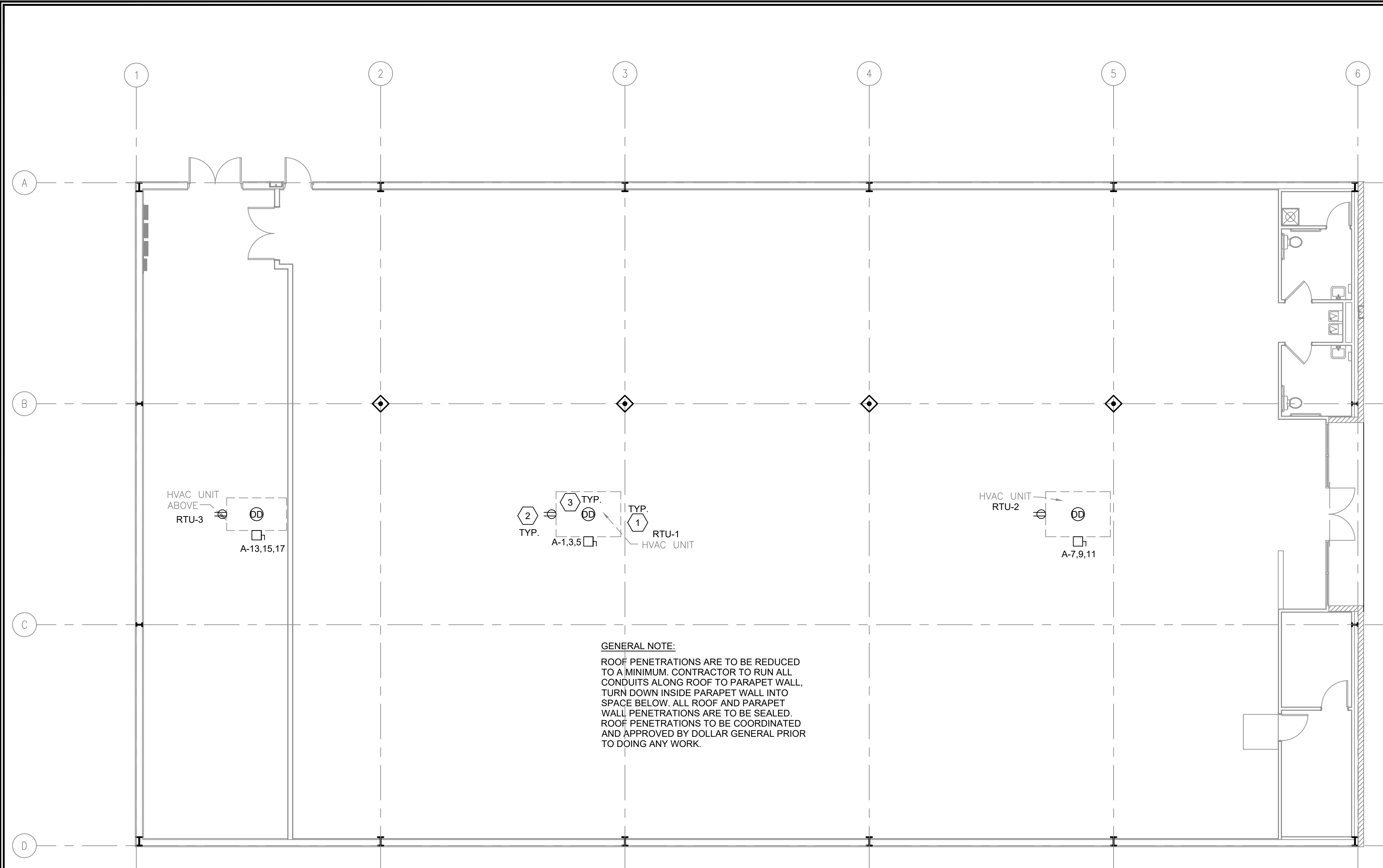
THESE DRAWINGS HAVE BEEN PREPARED IN PART, BASED UPON INFORMATION FURNISHED BY OTHERS. THE ENGINEER ASSUMES NO RESPONSIBILITY FOR THE ACCURACY OF THESE DRAWINGS FOR ANY ERRORS OR OMISSIONS THAT MAY HAVE BEEN INCORPORATED INTO THE DESIGN. THE ENGINEER'S WORK ON THIS DOCUMENT IS ADVISED TO OBTAIN VERIFICATION OF ITS ACCURACY. ALL WORK SHALL COMPLY WITH ANY AND ALL APPLICABLE CODES AND ORDINANCES. SUPERINTENDENTS ARE RESPONSIBLE FOR THE DESIGN AND BUILDING TECHNIQUES HELD WITHIN INFORMATION, DESIGN AND BUILDING TECHNIQUES HELD WITHIN THIS TITLE BLOCK.



**DOLLAR GENERAL®**  
US HWY 27  
FT WHITE, FL 32038  
STORE # 29861  
2023 PROTOTYPE - PLAN 'DGM1' - 10,640 SQ. FT.

DRAWING DATE: / DRAWN BY:  
4/5/24 - KWH  
REVISION DATE: / REVISED BY:  
PROJECT NUMBER:  
4000.249  
DRAWING TITLE:  
REFRIGERATION POWER & CABLE TRAY PLAN  
SHEET NO.

**E1.2**



LEGEND	
SYMB	DESCRIPTION
	BUZZER - TORK MDL #TA725 W/ TRANSFORMER MDL#TA592
	COMMERCIAL GRADE PUSH BUTTON
	125V NEMA 5-20R DUPLEX
	125/250V NEMA L14-20-R 4 PRONG TWIST LOCK
	125V NEMA 5-20R QUAD
	DISCONNECT
	BLACK MAGIC POWER POLE
	PHONE JACK
	RJ-11, RJ-45 DATA JACK, PHONE COMBO
A-23	PANEL-CIRCUIT NUMBER
\$m	PROVIDE OCCUPANCY LIGHT SENSOR- LEVITON ODS10-IDW
\$	20 AMP TOGGLE SWITCH
NL	NIGHT LIGHT CIRCUIT

- PLAN NOTES:
- LOCATIONS SHOWN FOR MECHANICAL UNITS ARE ONLY APPROXIMATE. CONTRACTOR MUST CONSULT MECHANICAL OR STRUCTURAL DRAWINGS TO DETERMINE ACTUAL UNIT LOCATIONS. PROVIDE 1/2" C. PENETRATION THRU ROOF WITHIN FOOTPRINT OF UNIT FOR USE WITH CONTROL WIRING TO UNIT BY OTHERS. PROVIDE PROPER WATERSEAL (TYPICAL).
  - FACTORY MOUNTED POWERED CONVENIENCE OUTLET. FIELD VERIFY THAT OUTLET IS POWERED. WIRE ALL WITH THIS NOTE TO CIRCUIT R-34 IF THEY ARE NOT POWERED.
  - PHOTOELECTRIC DUCT DETECTOR WITH HOUSING. TIE TO LED READOUT. STAND ALONE DEVICE, 120V. SIMPLEX #4098-9687 IS SPECIFIED WITH 4098-9842 CONTROL STATION. PROVIDE ONE DEVICE PER UNIT. MOUNT DEVICE IN SUPPLY AIR DUCTWORK. DEVICE SHALL BE PROVIDED AND WIRED TO THE CONTROL STATION BY THE ELECTRICAL CONTRACTOR. HIRE THE MECHANICAL CONTRACTOR FOR INSTALLATION IN DUCTWORK AND CONNECTION TO SHUTDOWN CONTROLS. ELECTRICAL CONTRACTOR SHALL PROVIDE ALL REQUIRED RELAYS AND 120V POWER. DO NOT POWER DUCT DETECTORS FROM HVAC UNIT LOW VOLTAGE. PLACE ANY REQUIRED LABELING ON CEILING TILE DIRECTLY BELOW UNIT. RUN CONDUIT & WIRE UNDERGROUND FROM UNIT TO INSIDE OF SPACE.

1 ROOF POWER PLAN  
E1.3 / SCALE: 1/8" = 1'-0"  
NORTH

HVAC UNIT WIRING TABLE												
UNIT	WIRE	COND	DISC	FUSE	ENCL	PH	VOLT	GND	BRKR	LOAD	CFM	TONS
RTU-1	#3	1 1/4"	100A/3P	90A	NEMA 3R	3ø	208	#8	90A/3P	24,770	5,000	12.5
RTU-2	#3	1 1/4"	100A/3P	90A	NEMA 3R	3ø	208	#8	90A/3P	22,770	5,000	12.5
RTU-3	#6	1"	60A/3P	40A	NEMA 3R	3ø	208	#10	45A/3P	11,520	2,000	5.0
EF-1	#12	3/4"	MOTOR RATED SWITCH		NEMA 1	1ø	120	#12	W/ LIGHTS	50	75	--
EF-2	#12	3/4"	MOTOR RATED SWITCH		NEMA 1	1ø	120	#12	20A/1P	50	75	--

TABLE NOTES:

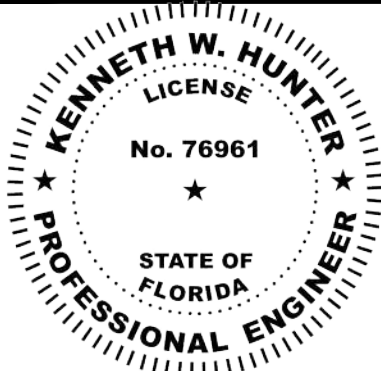
- THE ELECTRICAL CONTRACTOR SHALL FIELD COORDINATE WITH THE MECHANICAL CONTRACTOR CONCERNING THE ELECTRICAL INFO OF ALL MECHANICAL DEVICES REQUIRING AN ELECTRICAL CONNECTION PRIOR TO DOING ANY WORK. ANY DISCREPANCIES BETWEEN THE FIELD OBTAINED INFORMATION AND THE INFORMATION SHOWN ON THE ELECTRICAL PLANS SHALL BE BROUGHT TO THE ATTENTION OF THE ENGINEER PRIOR TO DOING ANY WORK.
- PROVIDE NEUTRALS ON AS REQUIRED BASIS, FIELD VERIFY.
- ALL DISCONNECTS TO BE HEAVY DUTY. FUSES TO BE RK-5 TYPE, SUBMIT SHOP DRAWINGS. BUSSMAN FRN-R-(AMP) IS SPECIFIED.

This item has been electronically signed and sealed by  
Kenneth W. Hunter, P.E. on 4/14/24 using a Digital Signature.

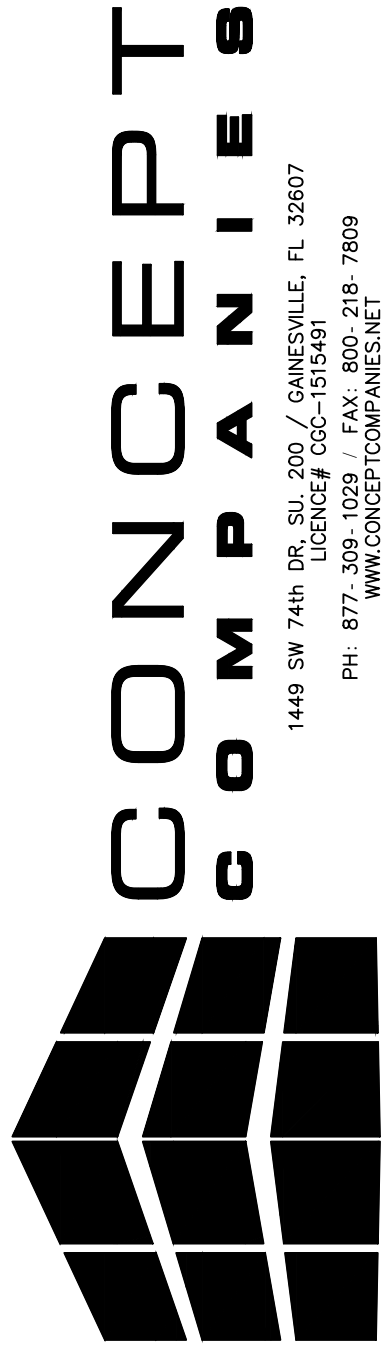
Printed copies of this document are not considered signed and  
sealed and the signature must be verified on any electronic copies.

**HDC** (352) 238-6366  
www.hdceng.com  
696 1st Ave N, Ste. 200  
St. Petersburg, FL 33701  
FL CA #31946  
**Hunter Design**  
& CONSULTING GA CA #PEF007171

**KENNETH W. HUNTER, P.E.**  
PROFESSIONAL ENGINEER  
696 1ST AVE N, STE 200  
ST. PETERSBURG, FL 33701  
PE #76961



THESE DRAWINGS HAVE BEEN PREPARED, IN PART, BASED UPON INFORMATION FURNISHED BY OTHERS. THE ENGINEER HAS NOT VERIFIED THE ACCURACY OF THIS INFORMATION. THE ENGINEER ASSUMES NO RESPONSIBILITY FOR THE ACCURACY OF THESE DRAWINGS FOR ANY ERRORS OR OMISSIONS THAT MAY HAVE BEEN INCORPORATED INTO THE DESIGN. THE ENGINEER'S RESPONSIBILITY IS LIMITED TO THE DESIGN OF THE ELECTRICAL SYSTEM SHOWN ON THIS DOCUMENT. ALL WORK SHALL COMPLY WITH ANY AND ALL APPLICABLE CODES AND ORDINANCES. SUPERINTENDENTS ARE ADVISED TO OBTAIN VERIFICATION OF THE INFORMATION, DESIGN AND BUILDING TECHNIQUES HELD WITHIN THESE DRAWINGS. THE ENGINEER'S LIABILITY IS LIMITED TO THE INFORMATION, DESIGN AND BUILDING TECHNIQUES HELD WITHIN THESE DRAWINGS. THE ENGINEER'S LIABILITY IS LIMITED TO THE INFORMATION, DESIGN AND BUILDING TECHNIQUES HELD WITHIN THESE DRAWINGS.



**DOLLAR GENERAL®**

US HWY 27  
FT WHITE, FL 32038

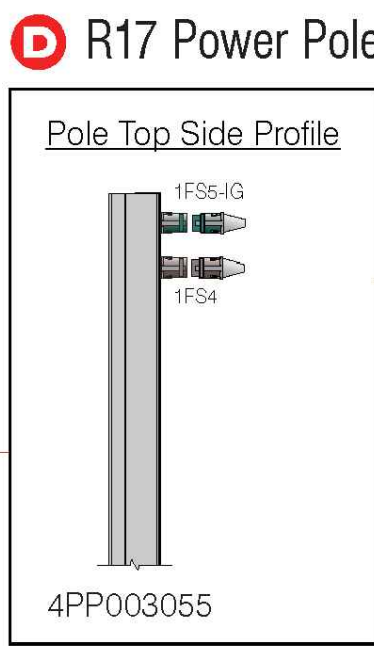
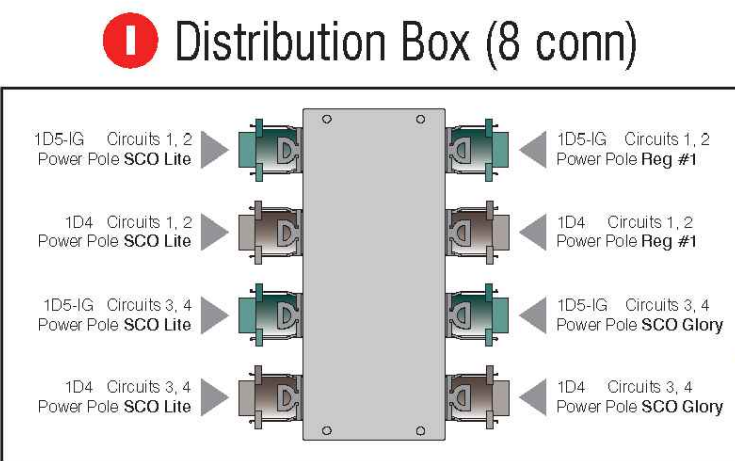
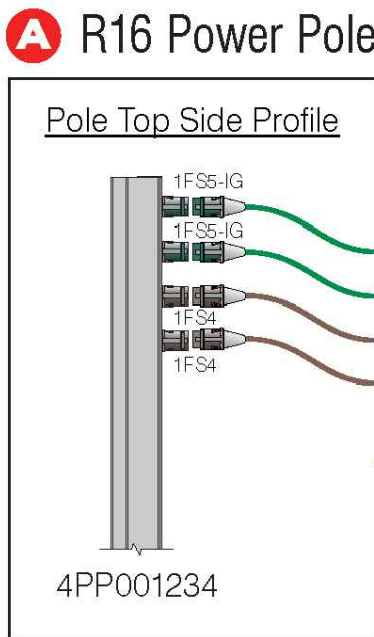
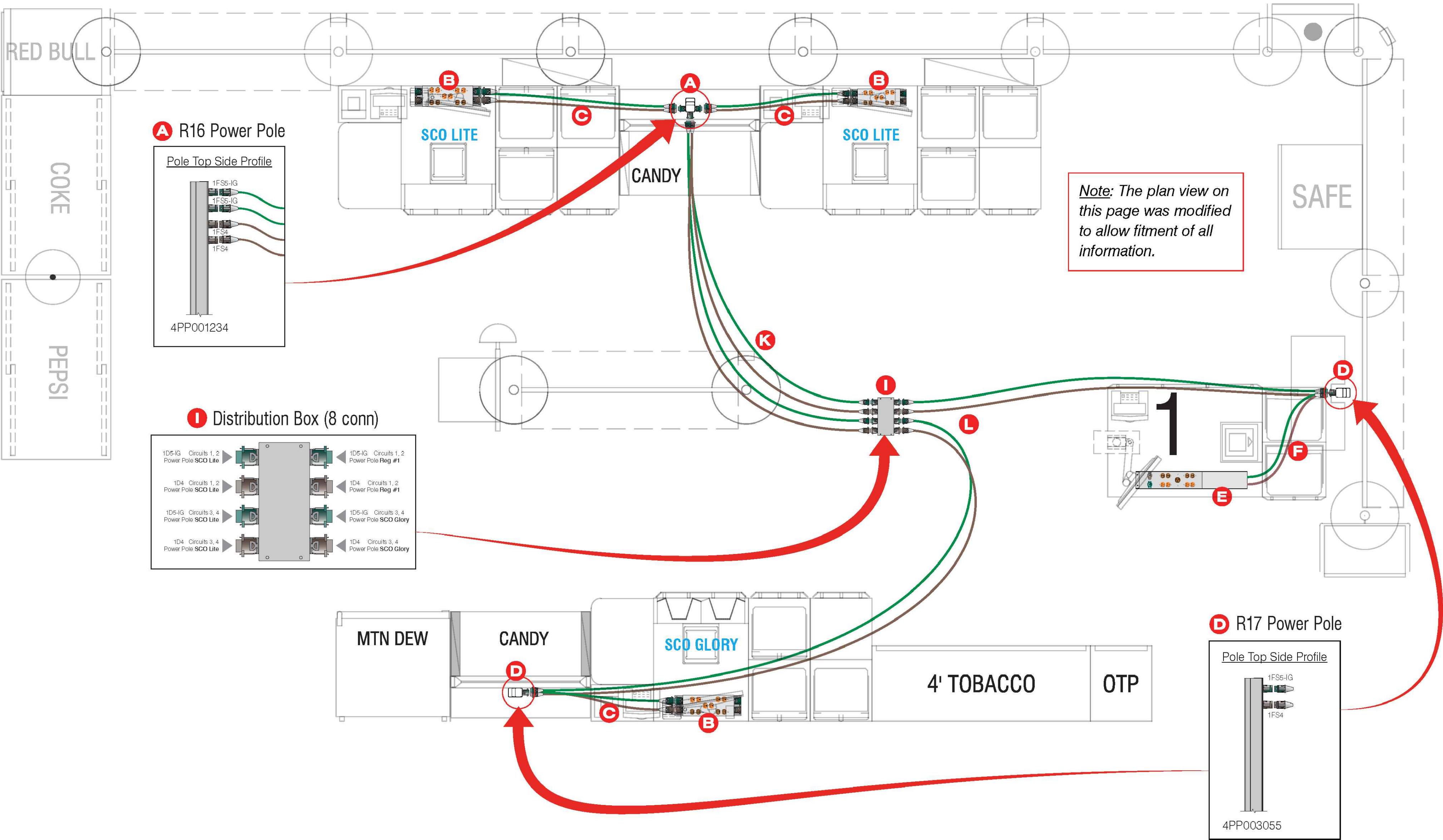
STORE # 29861  
2023 PROTOTYPE - PLAN "DGM1" - 10,640 SQ. FT.

DRAWING DATE: / DRAWN BY: 4/5/24 - KWH
REVISION DATE: / REVISED BY:
PROJECT NUMBER: 4000.249
DRAWING TITLE: ROOF POWER PLAN
SHEET NO.

E1.3

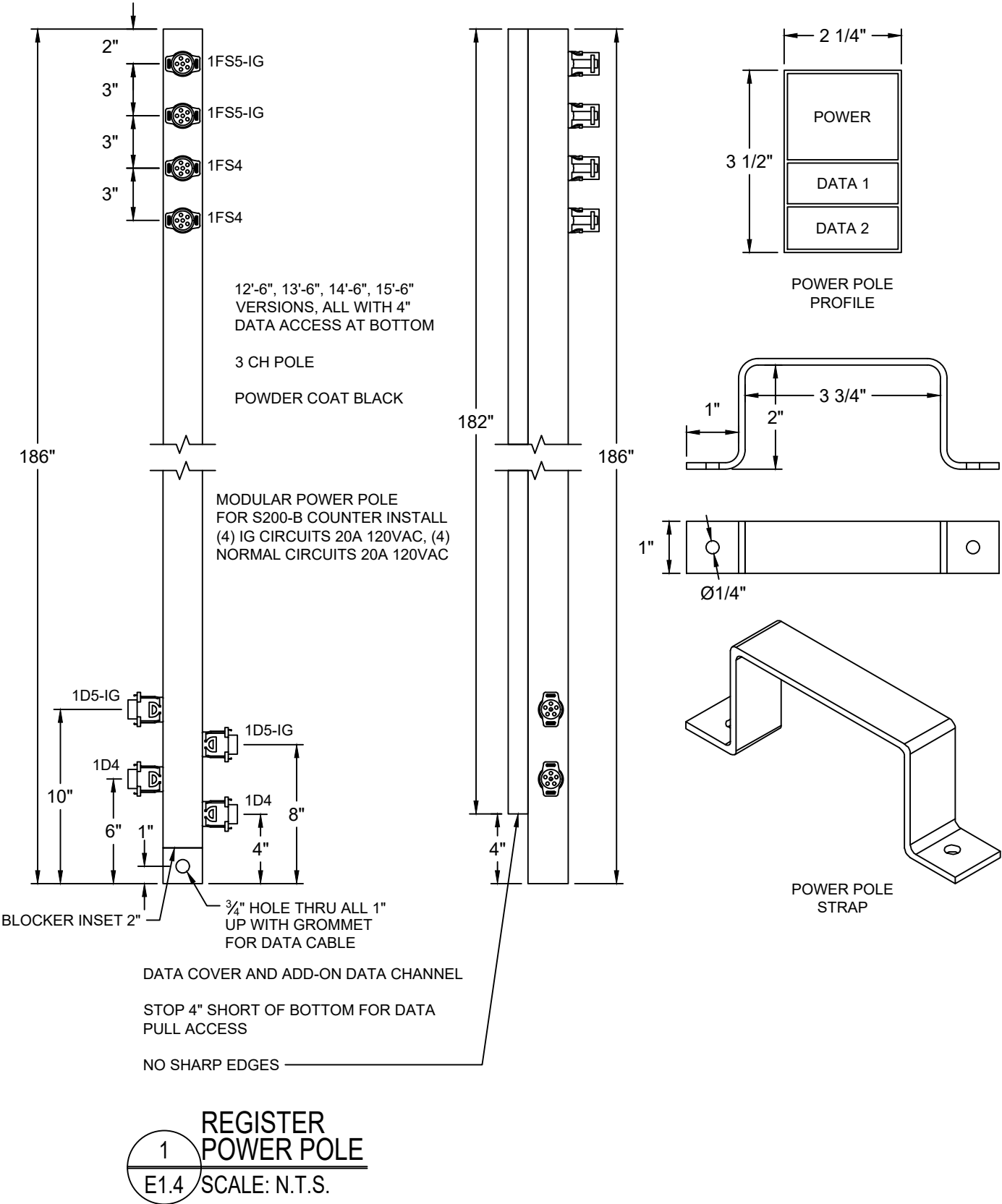


CHECKOUT SCENARIO SC27 QUEUE SCO RIGHT



Description	QTY	Part #
<b>A</b> R16 Power Pole	1	747DGS044
<b>B</b> SCO Power Box	3	747DGS059-SC-2357
<b>C</b> SCO Cable Kit	3	747DGS058-SC
<b>D</b> R17 Power Pole	2	747DGS080
<b>E</b> E Power Box	1	747DGS068-2600-E

Description	QTY	Part #
<b>F</b> E Cable Kit	1	747DGS068-C
<b>I</b> Distribution Box (8 conn)	1	747DGS081
<b>K</b> R16 Cable Kit (set of 4)	1	747DGS032A
<b>L</b> R16-20 Cable Kit (set of 4)	1	747DGS032A-20



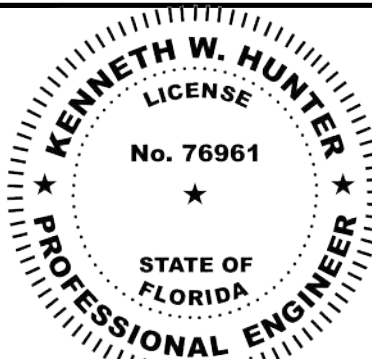
File: SCOWFlowScenarios 2023

NOTE: COORDINATE REGISTER POWER POLE INSTALLATION WITH STORE REGISTER LAYOUT.

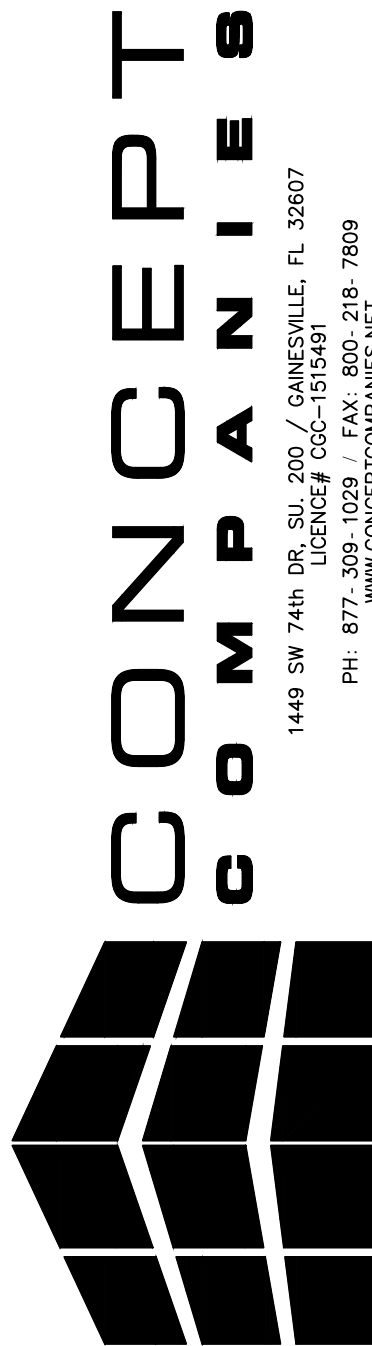
This item has been electronically signed and sealed by  
Kenneth W. Hunter, P.E. on 4/14/24 using a Digital Signature.  
Printed copies of this document are not considered signed and  
sealed and the signature must be verified on any electronic copies.

**HDC** (352) 238-6366  
www.hdceng.com  
696 1st Ave N, Ste. 200  
St. Petersburg, FL 33701  
FL CA #31946  
**Hunter Design**  
& CONSULTING GA CA #PEF007171

**KENNETH W. HUNTER, P.E.**  
PROFESSIONAL ENGINEER  
696 1ST AVE N, STE 200  
ST. PETERSBURG, FL 33701  
PE #76961



THESE DRAWINGS HAVE BEEN PREPARED IN PART, BASED UPON  
INFORMATION FURNISHED BY OTHERS. THE ENGINEER HAS  
NOT CONDUCTED A VISUAL SURVEY OF THE PROJECT  
ASSUMING NO RESPONSIBILITY FOR THE ACCURACY OF THESE  
DRAWINGS FOR ANY ERRORS OR OMISSIONS THAT MAY HAVE  
BEEN INCORPORATED INTO THE DESIGN. THE ENGINEER  
ON THIS DOCUMENT ARE ADVISED TO OBTAIN VERIFICATION OF  
APPLICABLE CODES AND ORDINANCES. SUPERINTENDENTS ARE  
INFORMATION, DESIGN AND BUILDING TECHNIQUES HELD WITHIN  
THE EXCLUSIVE PROPERTY OF THE PARTIES NOTED ON THIS  
TITLE BLOCK.

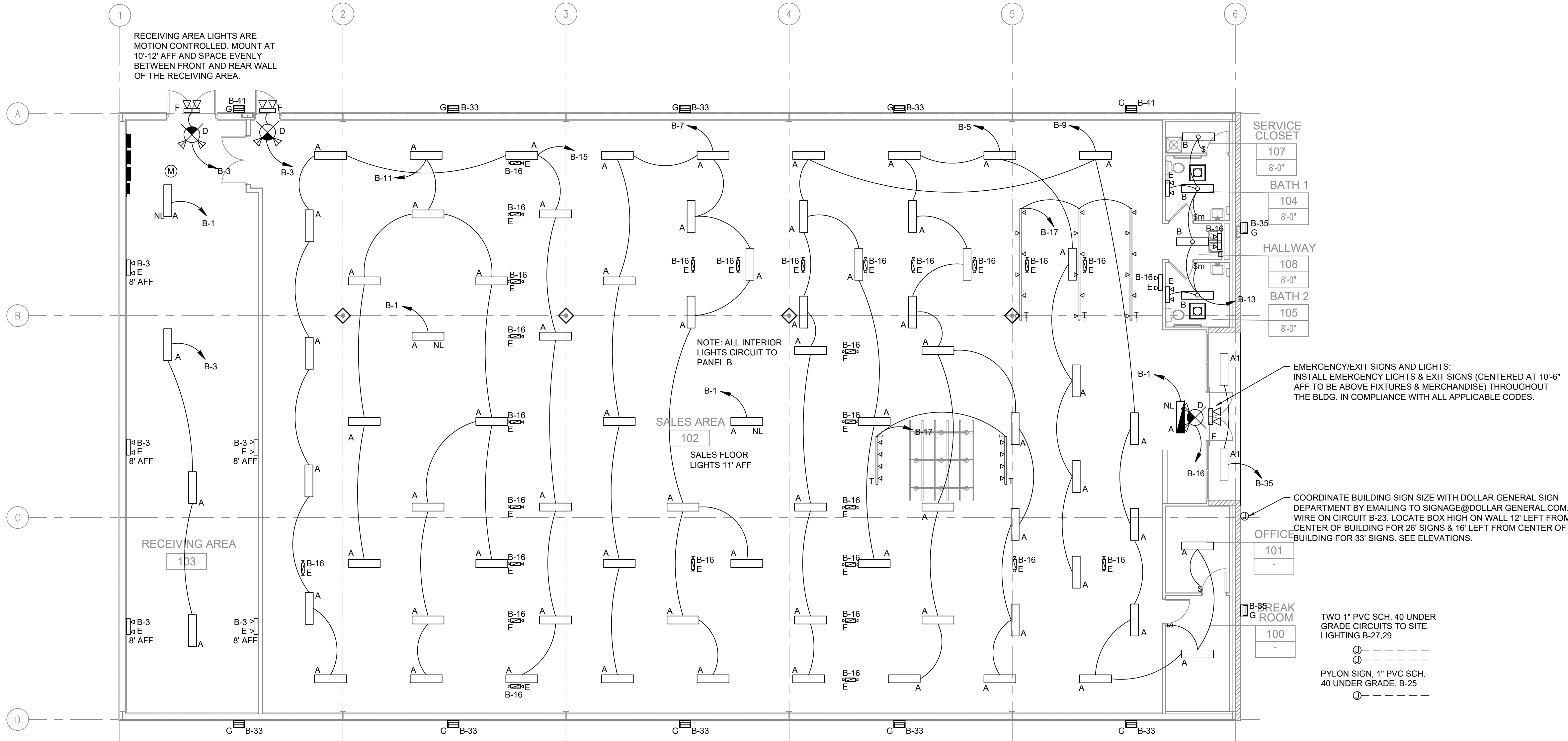


**DOLLAR GENERAL®**  
US HWY 27  
FT WHITE, FL 32038  
STORE # 28661  
2023 PROTOTYPE - PLAN DGM1 - 10,640 SQ. FT.

DRAWING DATE: / DRAWN BY:  
4/5/24 - KWH  
REVISION DATE: / REVISED BY:  
PROJECT NUMBER:  
4000.249  
DRAWING TITLE:  
REGISTER POWER POLE  
SHEET NO.

**E1.4**





NLES LIGHT FIXTURE SCHEDULE				
TYPE	MANF.	PART	DESCRIPTION	WATT
A	LEDS	ST5000	4' LED FIXTURE AERIAL MOUNT INCLUDES (2) 8 FT CABLES	33
A-NL	ETI	54583361	4' BBU COMPATIBLE LED FIXTURE	33
B	LEDS	ST2000	2' LED FIXTURE SURFACE MOUNT	20
C	ETI	55301101	LED EXIT SIGN	--
D	LEDS	EM2505	LED EXIT SIGN / EMERGENCY LIGHT COMBO WITH (2) HEADS	--
E	LEDS	EL2500	LED EMERGENCY LIGHT WITH (2) HEADS	--
F	LEDS	EL2501	LED EGRESS EMERGENCY LIGHT WITH (1) HEAD	--
F2	LEDS	EL2502	LED EGRESS EMERGENCY LIGHT WITH (2) HEADS	--
G	LEDS	WP4053	LED WALL PACK MOUNT AT 12' AFF	40
HB	LEDS	AL1210	LED AREA LIGHT MOUNTED ON WALL	150
HP/J	LEDS	AL1210/LEDS-POLE-DM490	(1) AREA LIGHT ON A 25' POLE	150
HP2/J	LEDS	AL1210/LEDS-POLE-DM490	(2) AREA LIGHTS ON A 25' POLE	300
T		CTL2830 WITH 11W PAR 30 E26 LED	TRACK LIGHT	

NOTES:

A. REFER TO SHEET 'T01' FOR NATIONAL ACCOUNT VENDORS LIST.

B. PROVIDE A 1 AMP CURRENT LIMITER FOR EACH TRACK.

C. PROVIDE ALL TRACK FIXTURE ACCESSORIES.

**KENNETH W. HUNTER, P.E.**  
PROFESSIONAL ENGINEER  
696 1ST AVE N, STE 200  
ST. PETERSBURG, FL 33701  
PE #76961

**KENNETH W. HUNTER**  
LICENSE  
No. 76961  
STATE OF FLORIDA  
PROFESSIONAL ENGINEER

THESE DRAWINGS HAVE BEEN PREPARED, IN PART, BASED UPON INFORMATION FURNISHED BY OTHERS. THE ENGINEER HAS NOT ASSUMED RESPONSIBILITY FOR THE ACCURACY OF THESE DRAWINGS FOR ANY ERRORS OR OMISSIONS THAT MAY HAVE BEEN INCORPORATED INTO IT AS A RESULT OF INCORRECT INFORMATION. ALL WORK SHALL COMPLY WITH ANY AND ALL APPLICABLE CODES AND ORDINANCES. SUPERINTENDENTS ARE RESPONSIBLE FOR THE PROPER INSTALLATION OF THE INFORMATION, DESIGN AND BUILDING TECHNIQUES HELD WITHIN THESE DRAWINGS. THESE DRAWINGS ARE THE EXCLUSIVE PROPERTY OF THE PARTIES NOTED ON THIS TITLE BLOCK.

**CONCEPT**  
COMPANIES

1449 SW 74th St, Suite 200 / GAINESVILLE, FL 32607  
PH: 877-309-1029 / FAX: 800-218-7809  
WWW.CONCEPTCOMPANIES.NET

**DOLLAR GENERAL**  
US HWY 27  
FT WHITE, FL 32038  
STORE # 28861  
2023 PROTOTYPE - PLAN "DOM" - 10,640 SQ. FT.

DRAWING DATE / DRAWN BY:  
4/5/24 - KWH

REVISION DATE / REVISION BY:

PROJECT NUMBER:  
4000.249

DRAWING TITLE:  
LIGHTING PLAN

SHEET NO.

**E2**

This item has been electronically signed and sealed by  
Kenneth W. Hunter, P.E. on 4/14/24 using a Digital Signature.

Printed copies of this document are not considered signed and  
sealed and the signature must be verified on any electronic copies.

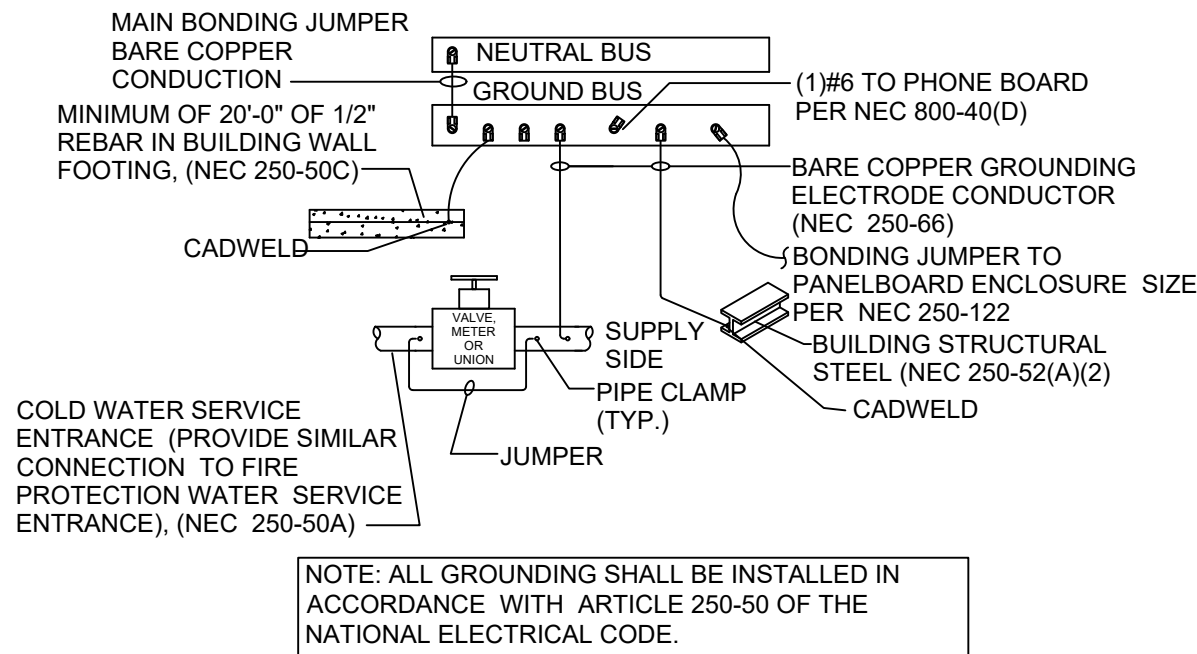
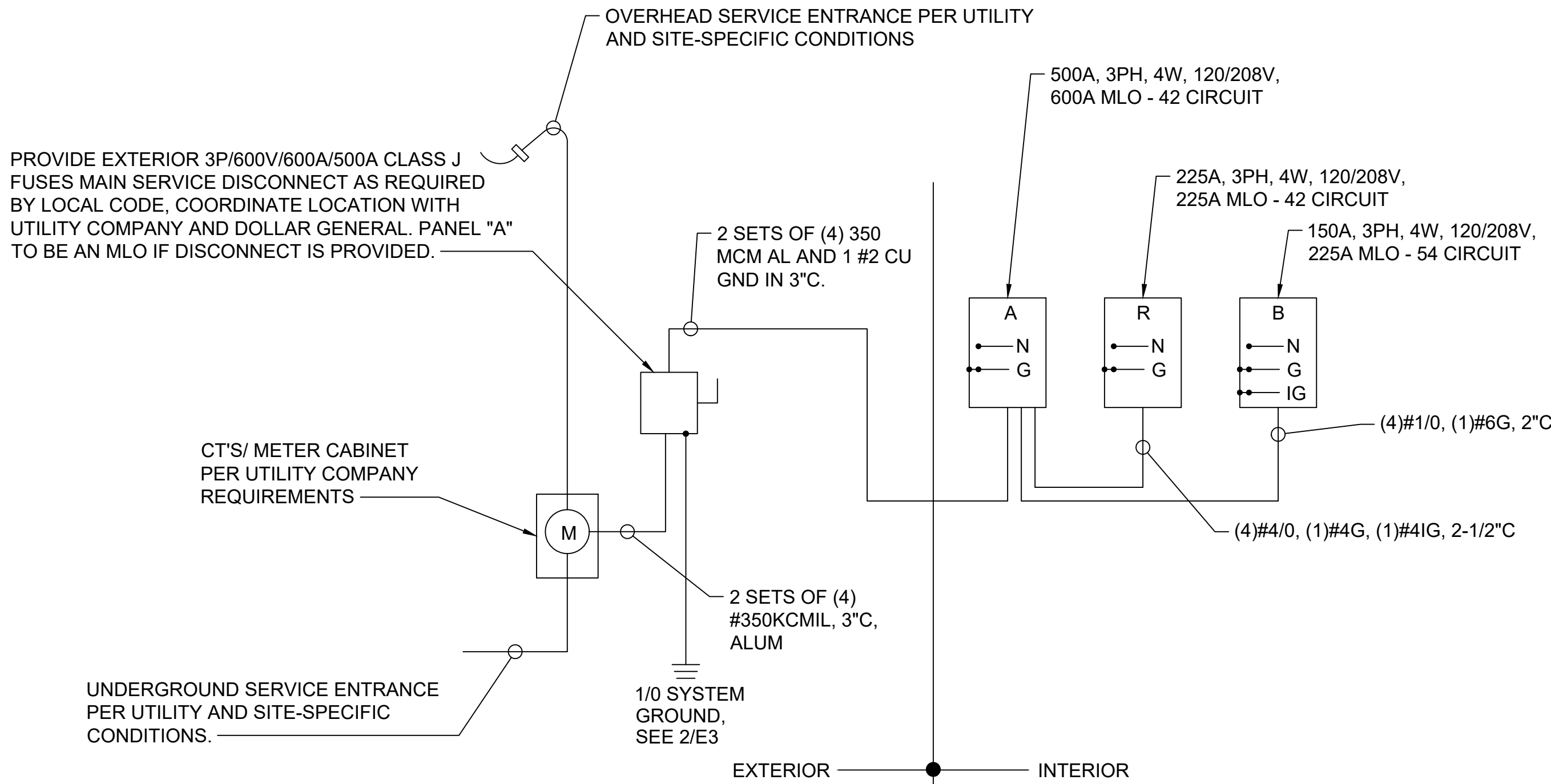
(352) 238-6366  
www.hdceng.com  
696 1st Ave N, Ste. 200  
St. Petersburg, FL 33701  
FL CA #31946  
GA CA #PEF007171

PANEL "A"			120/208V, 3-PHASE, 4-WIRE			600A FRAME, 500A MCB			SURFACE MOUNT			NEMA 1	
CKT #	LOAD (WATTS)	DESCRIPTION	CB		TOTAL PER PHASE IN WATTS			CB		DESCRIPTION	LOAD (WATTS)	CKT #	
			AMP	POLE	A	B	C	AMP	POLE				
1	8260	HVAC UNIT # 1	90	3	8360			20	1	AUTOMATIC DOOR	100	2	
3	8260					8620		20	1	TELEPHONE BOARD/BUZZER	360	4	
5	8260						8440	20	1	ENERGY MANAGEMENT	180	6	
7	8260	HVAC UNIT # 2	90	3	8440			20	1	OUTDOOR HVAC RECP.	180	8	
9	8260					8440		20	1	OUTDOOR DRINK VENDING	180	10	
11	8260						8440	20	1	OUTDOOR CONV RECEPT.	180	12	
13	3840	HVAC UNIT # 3	40	3	3940			20	1	EXHAUST FAN	100	14	
15	3840					3940		20	1	EXHAUST FAN	100	16	
17	3840						4340	20	1	INTERFACE EQUIP.	500	18	
19	1800	HAND DRYER	20	1	2300			20	1	VSAT. DATA HUB EQUIP.	500	20	
21	1800	HAND DRYER	20	1		2760		20	1	CCTV EQUIP.	960	22	
23		SPARE	20	1			0	20	1	SPARE		24	
25	1650	WATER HEATER	20	1	1650			20	1	SPARE		26	
27		SPARE	20	1		0		20	1	SPARE		28	
29	500	DRINKING FOUNTAINS	20	1			500	20	1	SPARE		30	
31	1200	OUTDOOR ICE MERCHANDISER	20	1	25725						24525	32	
33		SPARE	20	1		23609		225	3	PANEL "R"	23609	34	
35	960	SODA COOLERS	20	1			26468				25508	36	
37	1600	DRINK COOLERS	20	1	8646						7046	38	
39	1600	SODA COOLERS	20	1		6869		150	3	PANEL "B"	5269	40	
41		SPARE	15	1			9327				9327	42	
			TOTAL		59061	54238	57515			TOTAL CONNECTED =			170814 WATTS
													474 AMPS

LOAD SUMMARY						
120/208V	3-PHASE, 4-WIRE		CAPACITY: 500 AMP			
LOAD TYPE	CONNECTED	DEMAND	DEMAND FORMULA	TOTAL LOAD		
				CONNECTED	DEMAND	
LIGHTING	8.38 KW	10.47 KW	LOAD x 125% (NEC 210.19 CONTINUOUS)	170.81 KW	168.21 KW	
RECEPT	19.40 KW	14.70 KW	10KVA + 50% REMAINDER (NEC220.44)			
HVAC	61.28 KW	61.28 KW	LOAD x 100%			
MISC	81.76 KW	81.76 KW	LOAD x 100% (NEC 210.19 NON-CONT)	474.13 AMPS	466.90 AMPS	
NP	0.00 KW	0.00 KW	0 NONCOINCIDENTAL LOADS (NEC 220.60)			

PANEL "B" 120/208V, 3-PHASE, 4-WIRE			150A MLO				SURFACE MOUNT			NEMA 1		
CKT #	LOAD (WATTS)	DESCRIPTION	CB		TOTAL PER PHASE IN WATTS			CB		DESCRIPTION	LOAD (WATTS)	CKT #
			AMP	POLE	A	B	C	AMP	POLE			
1	132	NIGHT LIGHTS	20	1	132			20	1	SPARE		2
3	198	RECEIVING LIGHTS	20	1		698		20	1	SECURITY RECEPT.	500	4
5	627	70% SALES LIGHTS - ROWS 2 & 3	20	1			1167	20	1	OFFICE RECEPTS.	540	6
7	495	70% SALES LIGHTS - ROWS 5 & 6	20	1	1035			20	1	BREAK RM. RECEPTS.	540	8
9	845	30% SALES LIGHTS - ROWS 1 & 4	20	1		845		20	1	SPARE		10
11	396	70% SALES LIGHTS - ROWS 8 & 9	20	1			396	20	1	SPARE		12
13	159	BREAK RM/OFF /R/R. LIGHTS	20	1	1379			20	1	AIR CURTAIN	1220	14
15	396	30% SALES LIGHTS - ROWS 7 & 10	20	1		446		20	1	EMERGENCY/EXIT LIGHTS	50	16
17	300	TRACK LIGHTING	20	1			300	20	1	SPARE		18
19		SPARE	20	1	0			20	1	SPARE		20
21		SPARE	20	1		0		20	1	SPARE		22
23	900	BUILDING SIGN	20	1			900	20	1	SPARE		24
25	900	PYLON SIGN	20	1	900			20	1	SPARE		26
27	300	SITE LIGHTING	20	1		300		20	1	SPARE		28
29	1400	SITE LIGHTING	20	1			2600	20	1	POWER TERMINAL BROWN	1200	30
31		SPARE	20	1	1200			20	1	POWER TERMINAL BROWN	1200	32
33	400	LEFT SIDE EXT. WALL LTS	20	1		1600		20	1	POWER TERMINAL GREEN	1200	34
35	600	FRONT EXT. WALL/CANOPY LTS	20	1			1800	20	1	POWER TERMINAL GREEN	1200	36
37		SPARE	20	1	1200			20	1	POWER TERMINAL GREEN	1200	38
39		SPARE	20	1		1200		20	1	POWER TERMINAL GREEN	1200	40
41	100	EXTERIOR DUSK/DAWN	20	1			1300	20	1	POWER TERMINAL BROWN	1200	42
43		SPARE	20	1	1200			20	1	POWER TERMINAL BROWN	1200	44
45		SPARE	20	1		0		20	1	SPARE		46
47		SPARE	20	1			0	20	1	SPARE		48
49		SPARE	20	1	0			20	1	SPARE		50
51		SPARE	20	1		180		20	1	DISPLAY LIGHT	180	52
53		SPARE	20	1			864	20	1	GATORADE	864	54
* HANDLE LOCK ON DEVICE					TOTAL	7046	5269	9327	TOTAL CONNECTED = 21642 WATTS			
60 AMPS												

PANEL "R"			120/208V, 3-PHASE, 4-WIRE			225A MLO			SURFACE MOUNT			NEMA 1	
CKT #	LOAD (WATTS)	DESCRIPTION	CB		TOTAL PER PHASE IN WATTS			CB		DESCRIPTION	LOAD (WATTS)	CKT #	
			AMP	POLE	A	B	C	AMP	POLE				
1	1300	A-1-A REACH-IN DAIRY CASE	20	2	4514			40	2	A-2-A REACH-IN FROZEN CASE	3214	2	
3	1300					4514					3214	4	
5	1300						4514				3214	6	
7	1300	A-1-B REACH-IN DAIRY CASE	20	2	4514			40	2	A-2-B REACH-IN FROZEN CASE	3214	8	
9											3214	10	
11			SPARE	20	2		3214		40		2	A-2-C REACH-IN FROZEN CASE	3214
13		SPARE	20	2	3214			40	2	3214	14		
15					3214					3214	16		
17	1150		PRODUCE COOLER	15	1			4364	40	2	72" FREEZER	3214	18
19	1150	MEAT COOLER	15	1	4364					3214		20	
21	3120	MEAT COOLER	35	2		7280		50	2	PRODUCE COOLER		4160	22
23	3120						7280					4160	24
25	1123				REACH-IN DAIRY CASE	20	2				2205		20
27	1123			2205					1082	28			
29		SPARE	20	1			1300	20	2	COOLER	1300	30	
31	1200	COOLER LGT'S/HEATER	20	1	2500				1300		32		
33	1200	FREEZER LGT'S/HEATER	20	1		1560	20	1	SERVICE RECEPTS ON ROOF		360	34	
35		SPARE	15	2			3214	40		2	FROZEN CASE	3214	36
37						3214							3214
39	1622						1622			20		1	SPARE
41	1622	COOLER CU	25	2			1622	20	1	SPARE		42	
* HANDLE LOCK ON DEVICE			TOTAL		24525	23609	25508	TOTAL CONNECTED =			73642 WATTS		
												204 AMPS	



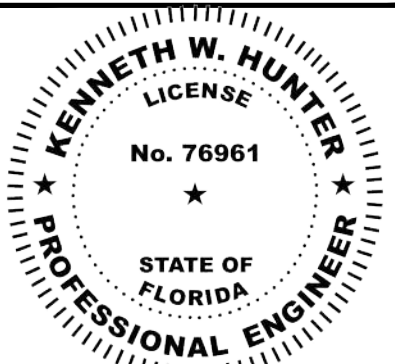
This item has been electronically signed and sealed by Kenneth W. Hunter, P.E. on 4/14/24 using a Digital Signature.

Printed copies of this document are not considered signed and sealed and the signature must be verified on any electronic copies.

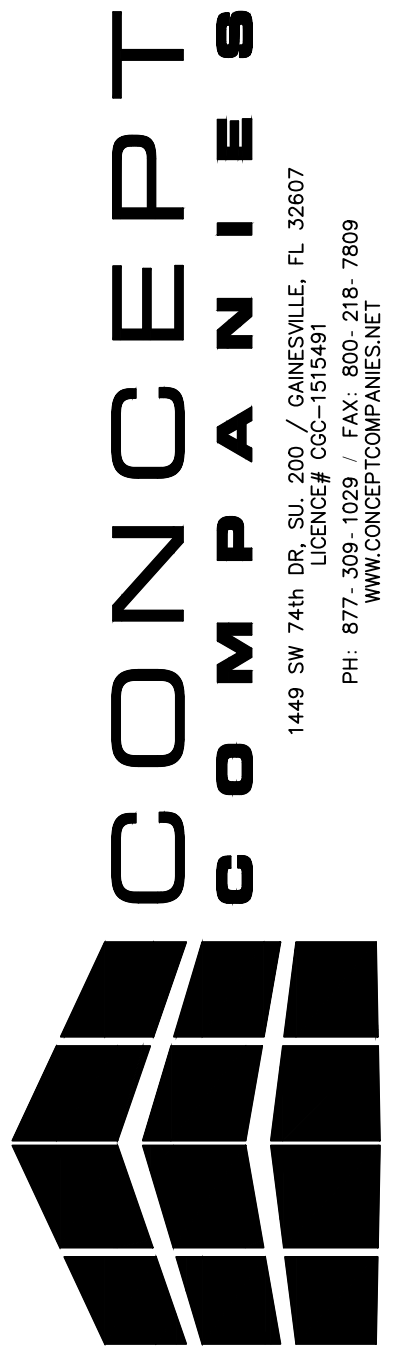
**HDC**  
Hunter Design  
& CONSULTING

(352) 238-6366  
www.hdceng.com  
696 1st Ave N, Ste. 200  
St. Petersburg, FL 33701  
FL CA #31946  
GA CA #PEF007171

**KENNETH W. HUNTER, P.E.**  
PROFESSIONAL ENGINEER  
696 1ST AVE N, STE 200  
ST. PETERSBURG, FL 33701  
PE #76961



THESE DRAWINGS HAVE BEEN PREPARED IN PART, BASED UPON INFORMATION FURNISHED BY OTHERS. THE ENGINEER HAS NOT CONDUCTED A VISUAL SURVEY OF THE PROJECT. THE ENGINEER ASSUMES NO RESPONSIBILITY FOR THE ACCURACY OF THESE DRAWINGS FOR ANY ERRORS OR OMISSIONS THAT MAY HAVE BEEN INCORPORATED INTO THE PROJECT. THE ENGINEER'S INFORMATION IS BASED ON THE INFORMATION PROVIDED ON THIS DOCUMENT. ALL WORK SHALL COMPLY WITH ANY AND ALL APPLICABLE CODES AND ORDINANCES. SUPERINTENDENTS ARE RESPONSIBLE FOR THE ACCURACY OF THE INFORMATION, DESIGN AND BUILDING TECHNIQUES HELD WITHIN THE EXCLUSIVE PROPERTY OF THE PARTIES NOTED ON THIS TITLE BLOCK.



**DOLLAR GENERAL®**  
US HWY 27  
FT WHITE, FL 32038  
STORE # 29861  
2023 PROTOTYPE - PLAN DGM1 - 10,640 SQ. FT.

DRAWING DATE: / DRAWN BY:  
4/5/24 - KWH

REVISION DATE: / REVISED BY:

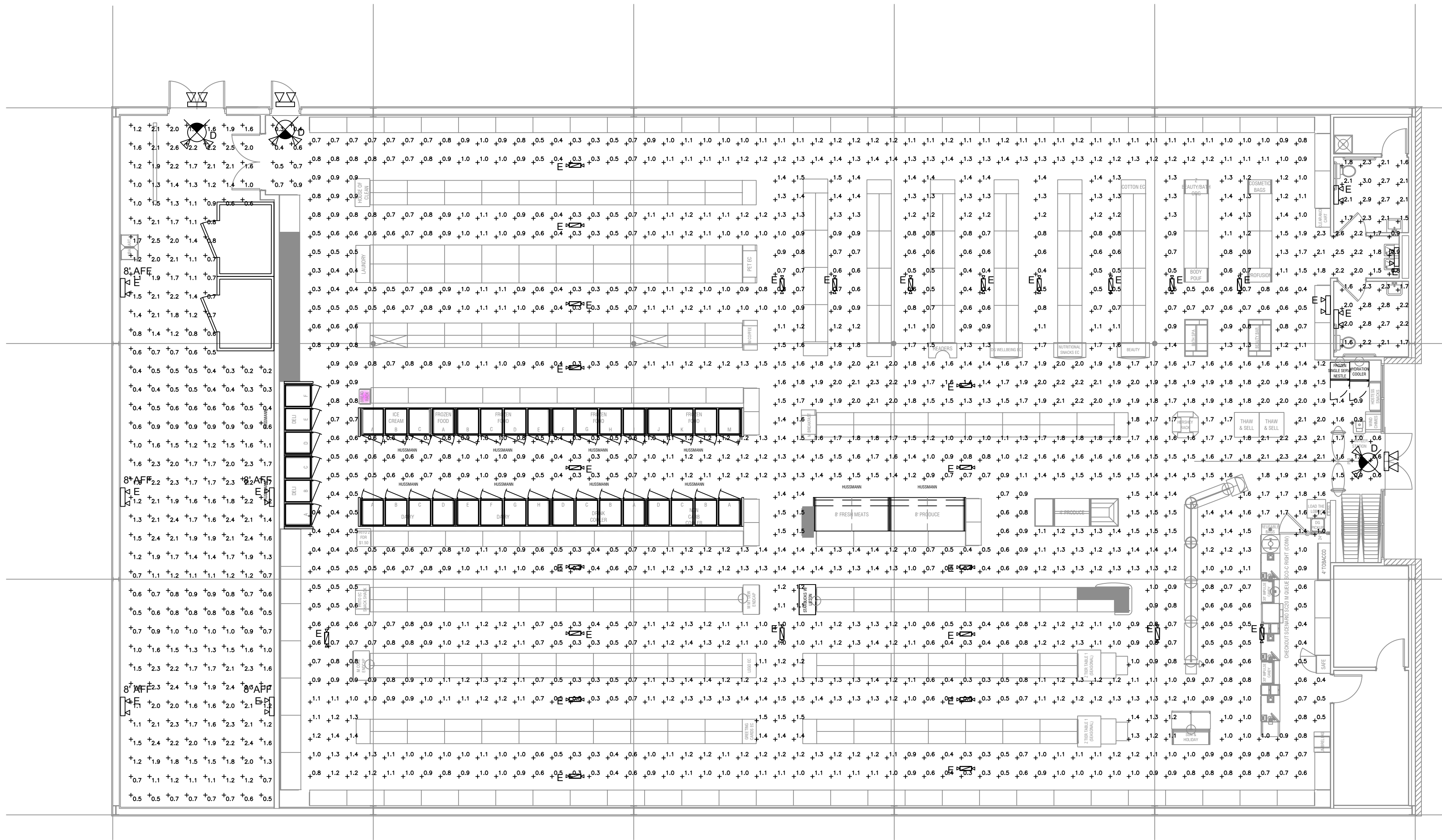
PROJECT NUMBER:  
4000.249

DRAWING TITLE:  
DGHP ELECTRICAL PANELS

SHEET NO.

E3





1 INTERIOR EMERGENCY PHOTOMETRIC PLAN  
E4 SCALE: 1/8" = 1'-0"  
NORTH

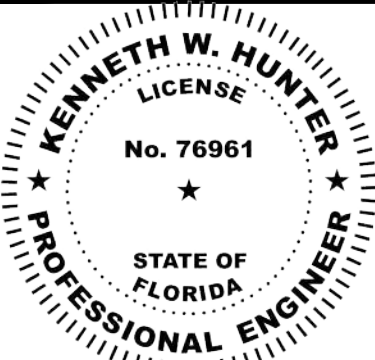
Emergency Egress Photometric Statistics						
Description	Symbol	Avg	Max	Min	Max/Min	Avg/Min
SALES AREA EGRESS	+	1.1 fc	2.6 fc	0.3 fc	8.7:1	3.7:1
RR 104 EGRESS	+	2.2 fc	3.0 fc	1.5 fc	2.0:1	1.5:1
RR 104 EGRESS	+	2.2 fc	2.8 fc	1.6 fc	1.8:1	1.4:1
RECEIVING EGRESS	+	1.3 fc	2.6 fc	0.4 fc	6.5:1	3.3:1

Fixture Schedule for Emergency Egress Photometrics								
Symbol	Label	QTY	Manufacturer	Catalog Number	Description	Lamp	Filename	LLF
	D	3	LEDS-LLC	EM2505	COMBINATION EXIT/EMERGENCY	ULTRA BRIGHT LED	EU2C.ies	1
	E	36	LEDS-LLC	E2500	LED TWIN-HEAD UNIT	ULTRA BRIGHT LED	EU2C.ies	1

This item has been electronically signed and sealed by  
Kenneth W. Hunter, P.E. on 4/14/24 using a Digital Signature.  
Printed copies of this document are not considered signed and  
sealed and the signature must be verified on any electronic copies.

**HDC**  
Hunter Design  
& CONSULTING  
(352) 238-6366  
www.hdceng.com  
696 1st Ave N, Ste. 200  
St. Petersburg, FL 33701  
FL CA #31946  
GA CA #PEF007171

**KENNETH W. HUNTER, P.E.**  
PROFESSIONAL ENGINEER  
696 1ST AVE N, STE 200  
ST. PETERSBURG, FL 33701  
PE #76961



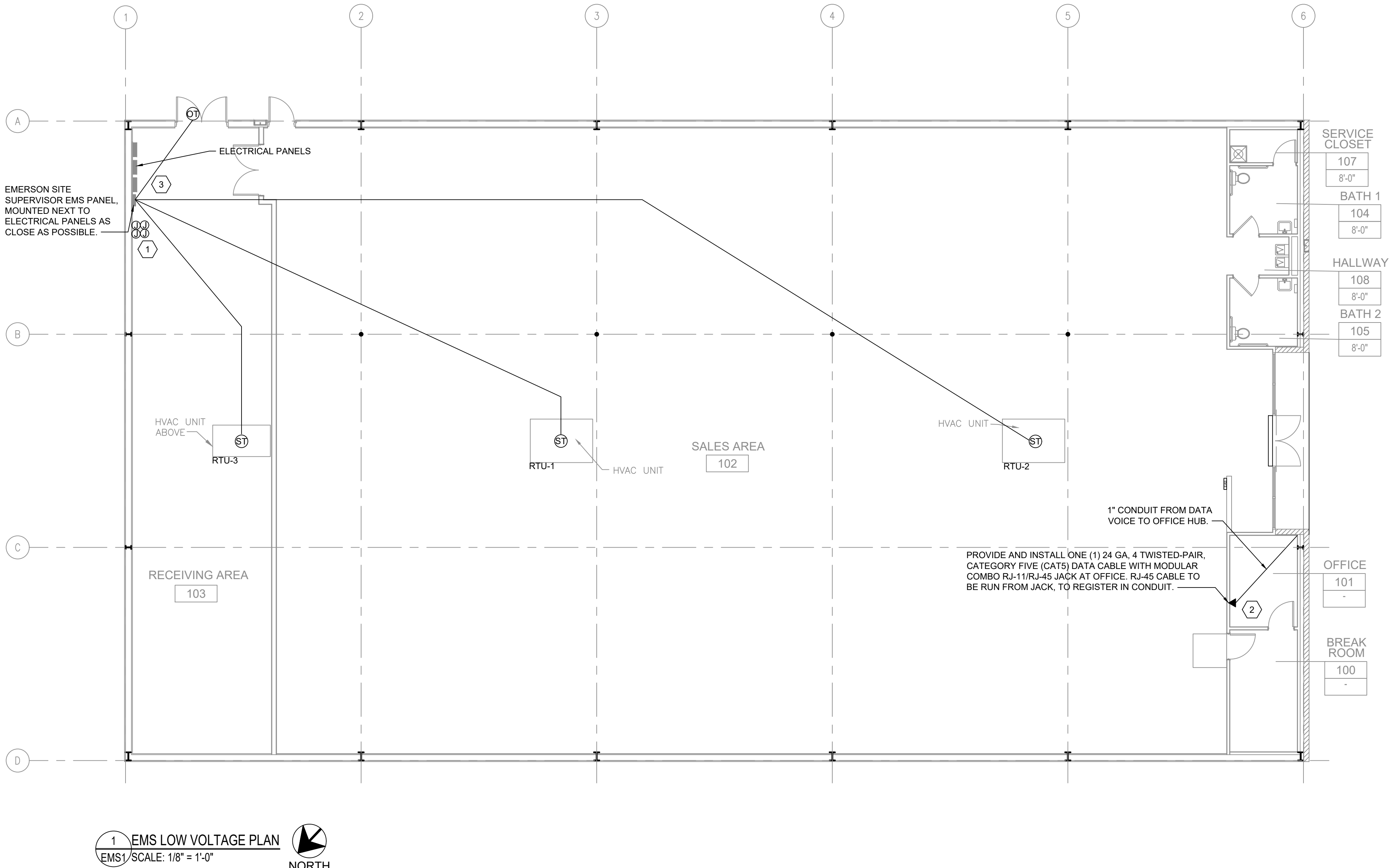
THESE DRAWINGS HAVE BEEN PREPARED IN PART, BASED UPON INFORMATION FURNISHED BY OTHERS. THE ENGINEER HAS NOT BEEN ADVISED OF ANY CHANGES TO THE INFORMATION. THE ENGINEER ASSUMES NO RESPONSIBILITY FOR THE ACCURACY OF THESE DRAWINGS FOR ANY ERRORS OR OMISSIONS THAT MAY HAVE BEEN INCORPORATED INTO THE DESIGN. THE ENGINEER HAS BEEN ADVISED OF ANY CHANGES TO THE INFORMATION. THE ENGINEER ASSUMES NO RESPONSIBILITY FOR THE ACCURACY OF THESE DRAWINGS FOR ANY ERRORS OR OMISSIONS THAT MAY HAVE BEEN INCORPORATED INTO THE DESIGN. THE ENGINEER HAS BEEN ADVISED OF ANY CHANGES TO THE INFORMATION. THE ENGINEER ASSUMES NO RESPONSIBILITY FOR THE ACCURACY OF THESE DRAWINGS FOR ANY ERRORS OR OMISSIONS THAT MAY HAVE BEEN INCORPORATED INTO THE DESIGN.



**DOLLAR GENERAL®**  
US HWY 27  
FT WHITE, FL 32038  
STORE # 28861  
2023 PROTOTYPE - PLAN "DGM1" - 10,640 SQ. FT.

DRAWING DATE: / DRAWN BY:  
4/5/24 - KWH  
REVISION DATE: / REVISED BY:  
PROJECT NUMBER:  
4000.249  
DRAWING TITLE:  
EMERGENCY  
PHOTOMETRIC PLANS  
SHEET NO.

E4



1 EMS LOW VOLTAGE PLAN  
EMS1 / SCALE: 1/8" = 1'-0" NORTH

- GENERAL NOTES:
- A. REFER TO E1 FOR GENERAL CONTRACTOR RESPONSIBILITIES. E.C MAY USE CABLE TRAY FOR LOW VOLTAGE CABLES, SEE 2/E2.
  - B. RUN CONDUIT FROM SENSORS TO BOTTOM OF STRUCTURE.
  - C. REFRIGERATION UNITS TO BE CONNECTED TO EMS PANEL BY DOLLAR GENERAL REFRIGERATION CONTRACTOR.
  - D. PLAN IS DIAGRAMIC ONLY. HOLD CONDUIT TIGHT TO EXPOSED MAIN GIRTS AND RUN AS HIGH AS POSSIBLE ALONG PERIMETER WALLS TO RECEIVING AREA.
  - E. REFER TO M1 FOR LOCATIONS OF THERMOSTATS.

- PLAN NOTES:
- TEST/RESET STATION FOR STAND ALONE DUCT DETECTOR, ONE FOR EACH DEVICE. SEE KEY NOTE 3 ON SHEET E1.2. SIMPLEX #4098-9842 IS SPECIFIED WITH PIEZO AND LED INDICATOR LIGHT.
  - PHONE LINE #1 - TWO RJ-11 PORTS. ONE (1) LOCATED IN OFFICE W/RJ-45 DATA JACK COMBO AND ONE (1) AT REGISTER. 24 GA. CAT 5, 4-PAIR TWISTED WIRE ONLY. USE BLUE AND BLUE & WHITE WIRES. HOOK TO LINE #1 TERMINAL IN RJ-11 JACK EACH PHONE JACK TO HAVE DEDICATED, SEPARATE HOME RUN TO DMARC. LABEL AS "PHONE" AT THE DESTINATION AND AT DMARC. PHONE COMPANY PROVIDES FINAL HOOK UP TO DMARC ONLY. PHONE LINE #2 - RJ-11 PHONE JACK SUPPLIED AND WIRED BY CONTRACTOR.
  - EMS REFRIGERATION PANEL CX E2 400. PANEL BY OTHERS. CONNECTION FROM THIS PANEL TO HVAC AND LIGHTING PANEL BY OTHERS. ELECTRICAL CONTRACTOR TO RUN AN EMPTY 1-1/2" C. WITH PULL ROPE BETWEEN THE TWO PANELS.

- EMS NOTES:
- A. EMS SUPPLIER NOTE: CUSTOMIZED DOLLAR GENERAL EMS PANEL REQUIRES STORE #, CITY, STATE, ZIP CODE & QTY. OF HVAC UNITS OF THE INSTALL SITE WHEN ORDERING. EMS SYSTEMS INSTALLATION GUIDE WITH PHOTOS IS AVAILABLE ON NATIONAL ACCOUNT WEBSITE. ALL QUESTIONS PERTAINING TO THE EMS PANEL, SYSTEM INSTALLATION & SETUP SHOULD BE DIRECTED TO EMERSON'S DOLLAR GENERAL SUPPORT TEAM AT 770-425-2724.
  - B. ALL SIGN & LIGHTING CIRCUITS MUST BE FED THROUGH THE DESIGNATED CONTACTORS AS NOTED ON THIS PAGE.
  - C. ALL LOW VOLTAGE HVAC & DOOR SENSORS MUST BE CONNECTED TO THE PROPER TERMINAL. 24 GA. SHIELDED (SHIELD MUST BE GROUNDED) CABLE, BELDEN #8641, 2 CONDUCTOR WIRE OR ITS EQUIVALENT IS REQUIRED.
  - D. COOLER & FREEZER HOME RUNS WILL BE TERMINATED AT ALL POINTS BY DOLLAR GENERAL REFRIGERATION DEPARTMENT.
  - E. CONTACT EMERSON FOR FULL DETAILS. CONTACT NATIONAL ACCOUNT MANAGER BRAD KYLE, (770) 425-2724 OPTION 4, BRAD.KYLE@EMERSON.COM

- TESTING NOTES:
- A. TESTING OF HVAC UNITS THRU EMS PANEL IS ACCOMPLISHED BY SIMPLY WARMING UP OR COOLING DOWN A SPACE TEMPERATURE SENSOR (USING A BLOW DRYER OR ELECTRONIC EQUIPMENT DUSTER AEROSOL) AND WATCH THE FAN, HEAT AND COOL STAGES CYCLE ON AND OFF. THIS REQUIRES TWO PEOPLE AT ALL TIMES...ONE TO WATCH THE SCREEN AND THE OTHER TO WATCH OPERATION OF THE AHU. WHEN COMPLETE, PRESS THE HOME BUTTON TO RETURN TO THE MAIN SCREEN.
  - B. EMS SYSTEM SHOULD BE TESTED FOR HVAC OPERATION, INTERIOR LIGHTING, EXTERIOR LIGHTING AND SIGN LIGHTING PRIOR TO CONTRACTOR'S ELECTRICAL POSSESSION DATE. USE OUTSIDE LIGHT AND SIGN LIGHT OVERRIDE FOR EXTERIOR TESTING.

DEVICE SCHEDULE					
SYMB	DESCRIPTION	CABLE TYPE	SUPPLIER	INSTALLER	NOTES
OT	OUTDOOR AIR TEMP MOUNTED 8'-0" A.F.F.	BELDEN 8761 OR EQUIVALENT (22AWG, 2C, STRANDED, SHIELDED)	EMS SUPPLIER	GENERAL CONTRACTOR	(1) PER RECEIVING ENTRY
ST	SUPPLY TEMP (501-1121) IN SUPPLY DUCT	BELDEN 8761 OR EQUIVALENT (22AWG, 2C, STRANDED, SHIELDED)	EMS SUPPLIER	GENERAL CONTRACTOR	(1) PER HVAC UNIT
TS	TEMP SPACE SENSOR (609-6590) 8'-0" A.F.F.	BELDEN 8761 OR EQUIVALENT (22AWG, 2C, STRANDED, SHIELDED)	EMS SUPPLIER	GENERAL CONTRACTOR	(1) PER HVAC UNIT ZONE
OC	RJ-11/RJ-45 DATA JACK PHONE COMBO	CAT-5 DATA CABLE (24AWG, 4 TWISTED PAIR)	GENERAL CONTRACTOR	GENERAL CONTRACTOR	(1) AT OFFICE COMPUTER CART

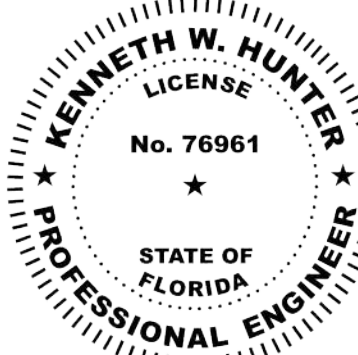
This item has been electronically signed and sealed by  
Kenneth W. Hunter, P.E. on 4/14/24 using a Digital Signature.

Printed copies of this document are not considered signed and  
sealed and the signature must be verified on any electronic copies.

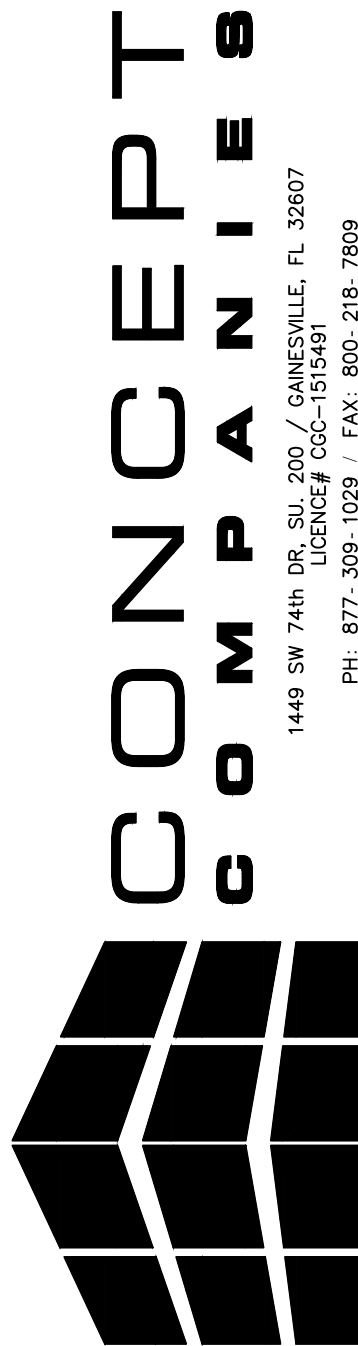
**HDC**  
Hunter Design  
& CONSULTING

(352) 238-6366  
www.hdceng.com  
696 1st Ave N, Ste. 200  
St. Petersburg, FL 33701  
FL CA #31946  
GA CA #PEF007171

**KENNETH W.  
HUNTER, P.E.**  
PROFESSIONAL ENGINEER  
696 1ST AVE N, STE 200  
ST. PETERSBURG, FL 33701  
PE #76961



THESE DRAWINGS HAVE BEEN PREPARED, IN PART, BASED UPON  
INFORMATION FURNISHED BY OTHERS. THE ENGINEER HAS  
NOT VERIFIED THE ACCURACY OF THE INFORMATION. THE  
ENGINEER ASSUMES NO RESPONSIBILITY FOR THE ACCURACY OF THESE  
DRAWINGS FOR ANY ERRORS OR OMISSIONS THAT MAY HAVE  
BEEN INCORPORATED INTO THE DESIGN. THE ENGINEER'S  
INFORMATION ON THIS DOCUMENT ARE ADVISED TO OBTAIN VERIFICATION OF  
ITS ACCURACY. ALL WORK SHALL COMPLY WITH ANY AND ALL  
APPLICABLE CODES AND ORDINANCES. SUPERINTENDENTS ARE  
INFORMED THAT THE DESIGN AND BUILDING TECHNIQUES HELD WITHIN  
THIS DOCUMENT ARE THE EXCLUSIVE PROPERTY OF THE PARTIES NOTED ON THIS  
TITLE BLOCK.



**DOLLAR GENERAL®**  
US HWY 27  
FT WHITE, FL 32038  
STORE # 28661  
2023 PROTOTYPE - PLAN "DGM1" - 10,640 SQ. FT.

DRAWING DATE: / DRAWN BY:  
4/5/24 - KWH

REVISION DATE: / REVISED BY:

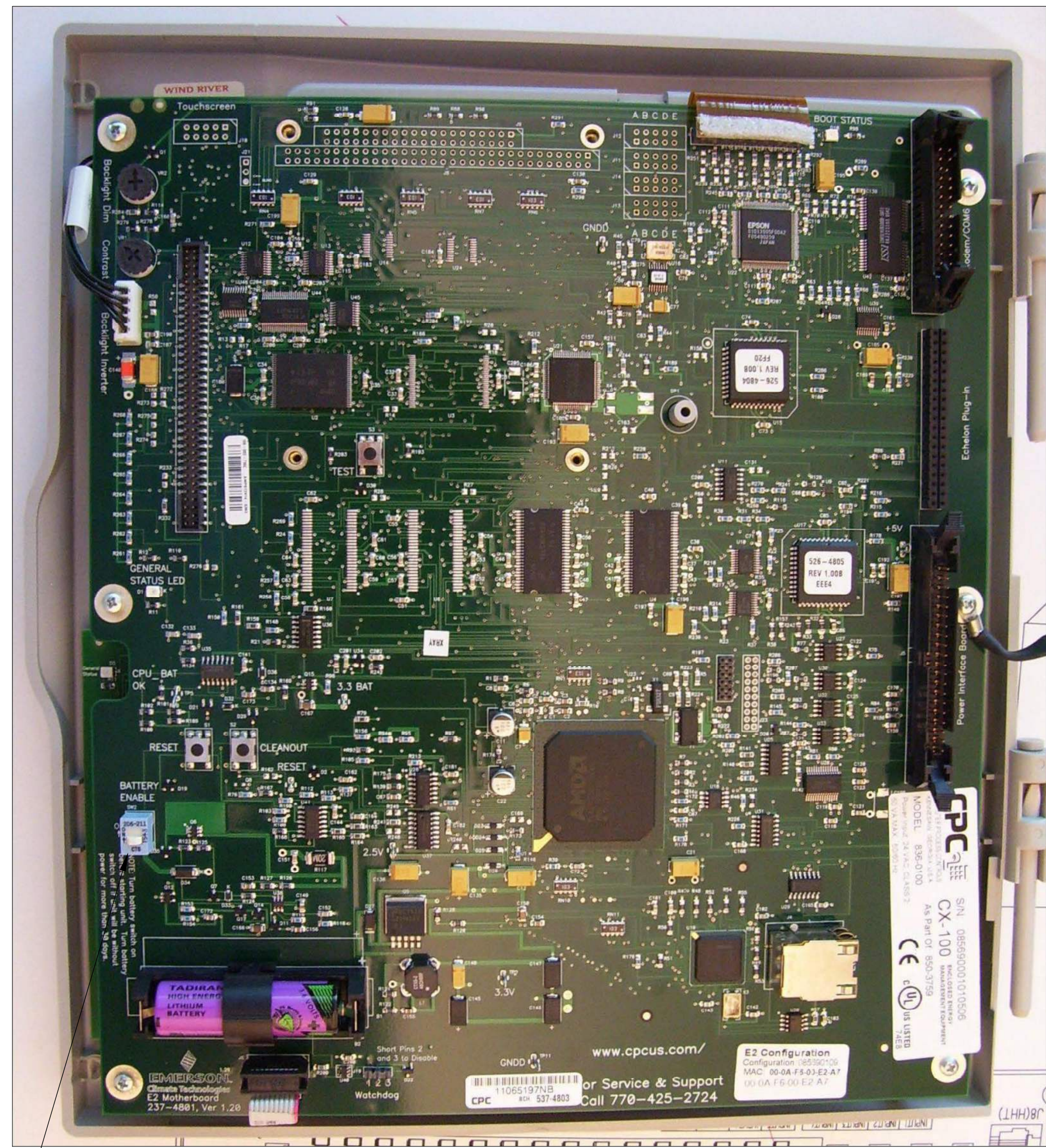
PROJECT NUMBER:  
4000.249

DRAWING TITLE:  
EMS LOW VOLTAGE PLAN

SHEET NO.

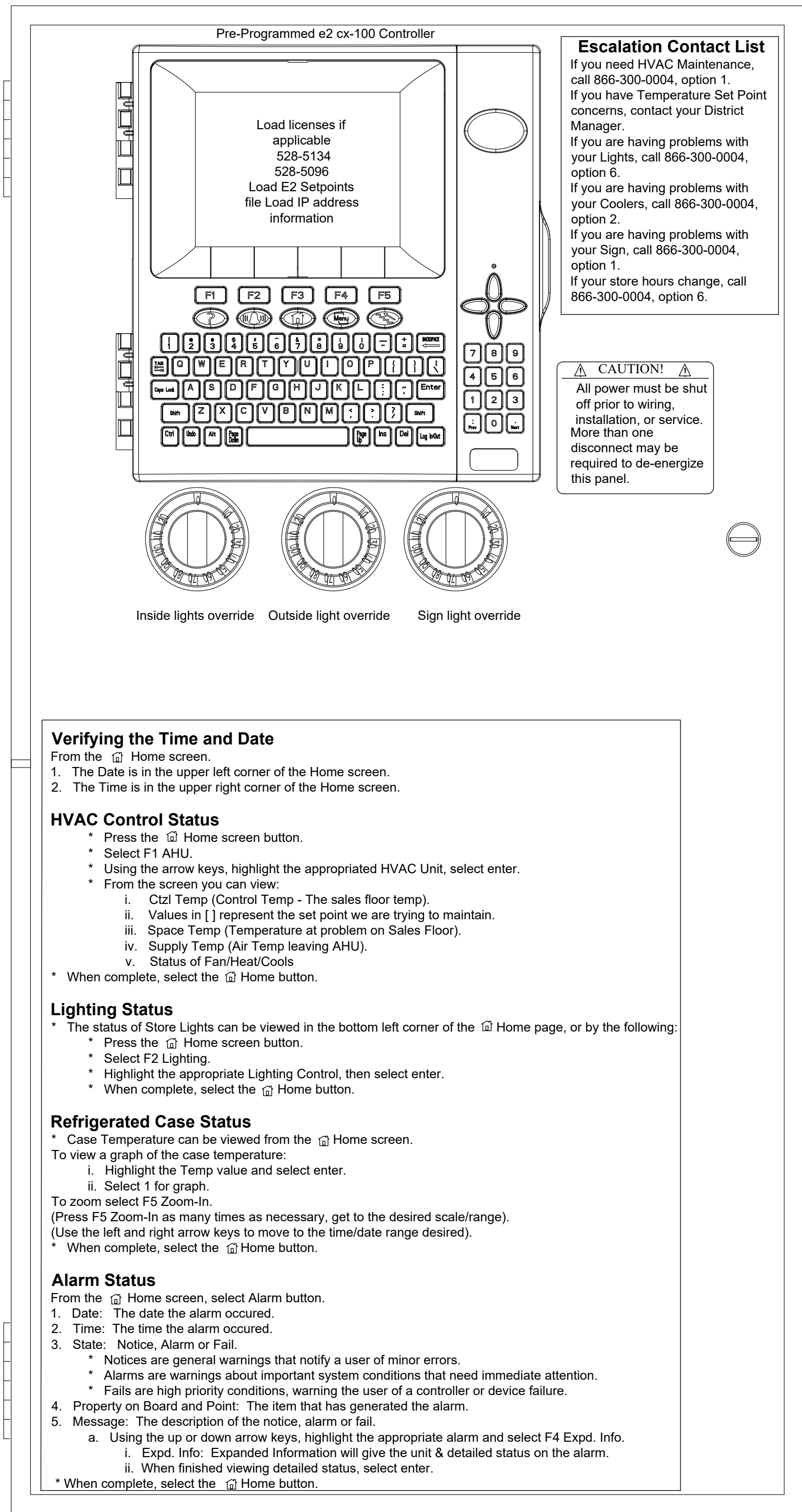
**EMS1**



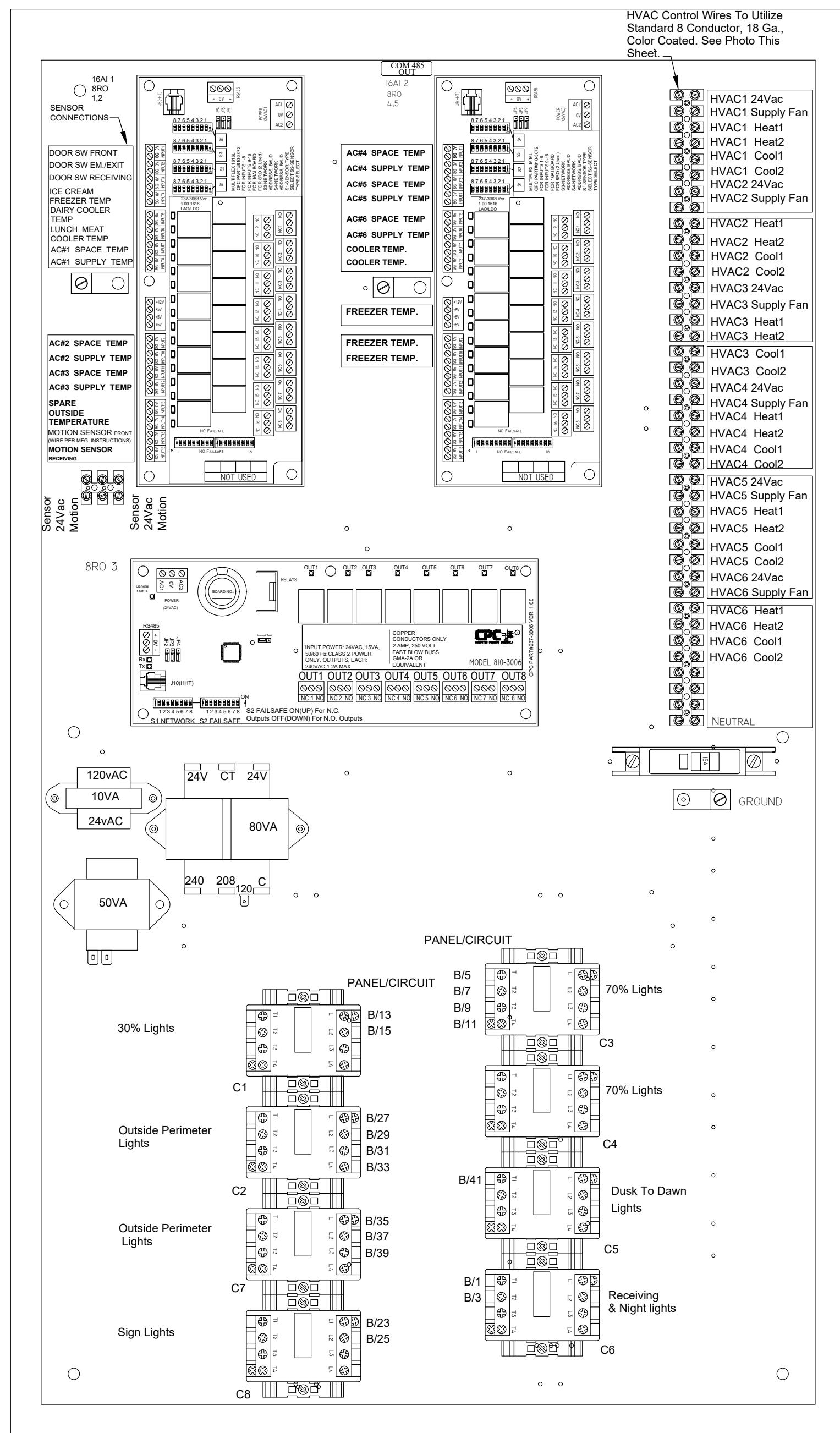


GENERAL CONTRACTOR TO  
ENSURE THAT THE BATTERY  
ENABLE IS SWITCHED TO  
THE  
"ON" POSITION

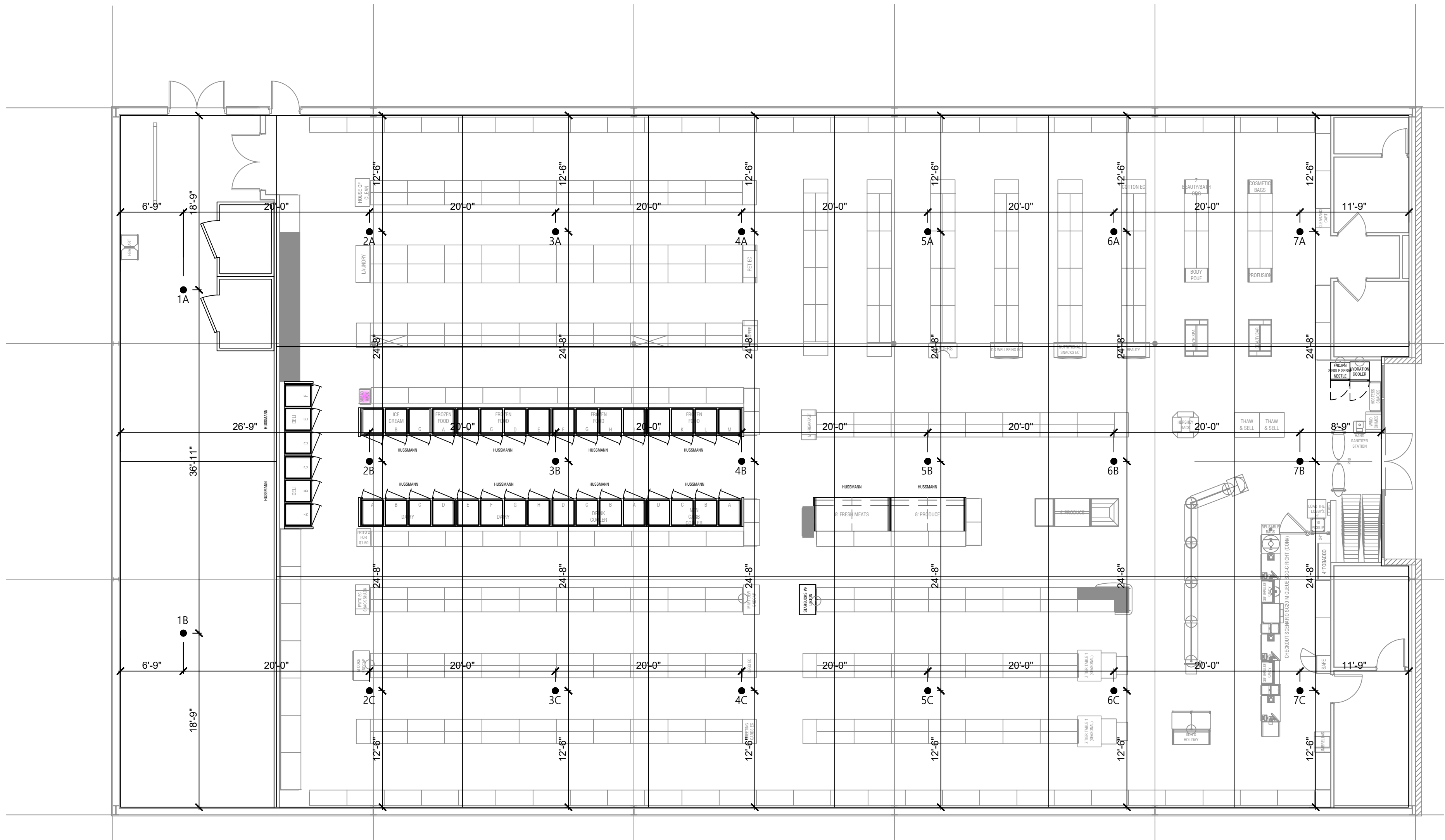
1 CPU TERMINAL DIAGRAM  
EMS2 SCALE: N.T.S.



2 PROGRAMMER CONTROLLER  
EMS2 SCALE: N.T.S.







1 RADIO TEST GRID PLAN  
TG1 SCALE: 1/8" = 1'-0"  
NORTH

## TWO-WAY COMMUNICATION TESTING NOTES

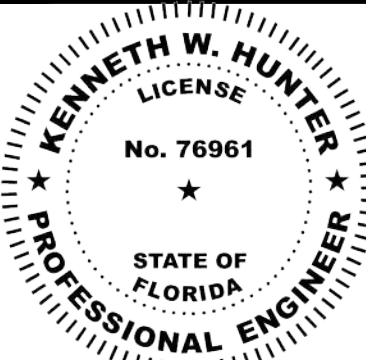
- PRIOR TO BUILDING INSPECTION, THE BUILDING OWNER SHALL HAVE THE RADIO SYSTEM TESTED TO VERIFY THAT TWO-WAY COVERAGE IS NOT LESS THAN 95%.
- READINGS SHALL BE TAKEN AT EACH OF THE POINTS INDICATED ON THE RADIO TEST GRID PLAN.
- THE TEST SHALL BE CONDUCTED USING A CALIBRATED PORTABLE RADIO OF THE LATEST BRAND AND MODEL APPROVED BY THE FIRE CODE OFFICIAL.
- MINIMUM INBOUND SIGNAL STRENGTH SHALL BE SUFFICIENT TO PROVIDE USABLE VOICE COMMUNICATIONS THROUGHOUT THE COVERAGE AREA AS SPECIFIED BY THE FIRE CODE OFFICIAL. THE INBOUND SIGNAL LEVEL SHALL BE SUFFICIENT TO PROVIDE NOT LESS THAN A DELIVERED AUDIO QUALITY (DAQ) OF 3.0 OR AN EQUIVALENT SIGNAL-TO-INTERFERENCE-PLUS-NOISE RATIO (SINR) APPLICABLE TO THE TECHNOLOGY FOR EITHER ANALOG OR DIGITAL SIGNALS.
- MINIMUM OUTBOUND SIGNAL STRENGTH SHALL BE SUFFICIENT TO PROVIDE USABLE VOICE COMMUNICATIONS THROUGHOUT THE COVERAGE AREA AS SPECIFIED BY THE FIRE CODE OFFICIAL. THE INBOUND SIGNAL LEVEL SHALL BE SUFFICIENT TO PROVIDE NOT LESS THAN A DAQ OF 3.0 OR AN EQUIVALENT SINR APPLICABLE TO THE TECHNOLOGY FOR EITHER ANALOG OR DIGITAL SIGNALS.
- SIGNAL STRENGTH SHALL BE SUFFICIENT TO MEET THE REQUIREMENTS OF THE APPLICATIONS BEING UTILIZED BY PUBLIC SAFETY FOR EMERGENCY OPERATIONS THROUGH THE COVERAGE AREA AS SPECIFIED BY THE FIRE CODE OFFICIAL.
- FAILURE OF MORE THAN ONE TEST AREA SHALL RESULT IN FAILURE OF THE TEST.
- UPON FAILURE OF THE TEST, A TWO-WAY RADIO COMMUNICATION ENHANCEMENT SYSTEM SHALL BE INSTALLED. SYSTEM SHALL COMPLY WITH NFPA 72 & NFPA 1221 AS APPLICABLE. SYSTEM SHALL BE TESTED AFTER INSTALLATION.

TEST ZONE (AREA)							
1A (623SF)	2A (496SF)	3A (496SF)	4A (496SF)	5A (496SF)	6A (496SF)	7A (496SF)	
1B (623SF)	2B (496SF)	3B (496SF)	4B (496SF)	5B (496SF)	6B (496SF)	7B (396SF)	
	2C (496SF)	3C (496SF)	4C (496SF)	5C (496SF)	6C (496SF)	7C (496SF)	

This item has been electronically signed and sealed by  
Kenneth W. Hunter, P.E. on 4/14/24 using a Digital Signature.  
Printed copies of this document are not considered signed and  
sealed and the signature must be verified on any electronic copies.

**HDC**  
Hunter Design  
& CONSULTING  
(352) 238-6366  
www.hdceng.com  
696 1st Ave N, Ste. 200  
St. Petersburg, FL 33701  
FL CA #31946  
GA CA #PEF007171

**KENNETH W.  
HUNTER, P.E.**  
PROFESSIONAL ENGINEER  
696 1ST AVE N, STE 200  
ST. PETERSBURG, FL 33701  
PE #76961



THESE DRAWINGS HAVE BEEN PREPARED IN PART, BASED UPON  
INFORMATION FURNISHED BY OTHERS. THE ENGINEER HAS  
NOT VERIFIED THE ACCURACY OF THE INFORMATION  
FURNISHED. THE ENGINEER HAS NOT BEEN ADVISED OF  
ANY CHANGES TO THE INFORMATION FURNISHED. THE  
ENGINEER ASSUMES NO RESPONSIBILITY FOR THE ACCURACY OF THESE  
DRAWINGS FOR ANY ERRORS OR OMISSIONS THAT MAY HAVE  
BEEN INCORPORATED INTO THE DRAWINGS. THE ENGINEER  
ON THIS DOCUMENT ARE ADVISED TO OBTAIN VERIFICATION OF  
ITS ACCURACY. ALL WORK SHALL COMPLY WITH ANY AND ALL  
APPLICABLE CODES AND ORDINANCES. SUPERINTENDENTS ARE  
INFORMATION, DESIGN AND BUILDING TECHNIQUES HELD WITHIN  
ARE THE EXCLUSIVE PROPERTY OF THE PARTIES NOTED ON THIS  
TITLE BLOCK.



**DOLLAR GENERAL®**  
US HWY 27  
FT WHITE, FL 32038  
STORE # 29861  
2023 PROTOTYPE - PLAN "DGM1" - 10,640 SQ. FT.

DRAWING DATE: / DRAWN BY:  
4/5/24 - KWH  
REVISION DATE: / REVISED BY:  
PROJECT NUMBER:  
4000.249  
DRAWING TITLE:  
RADIO TEST GRID PLAN  
SHEET NO.

**TG1**