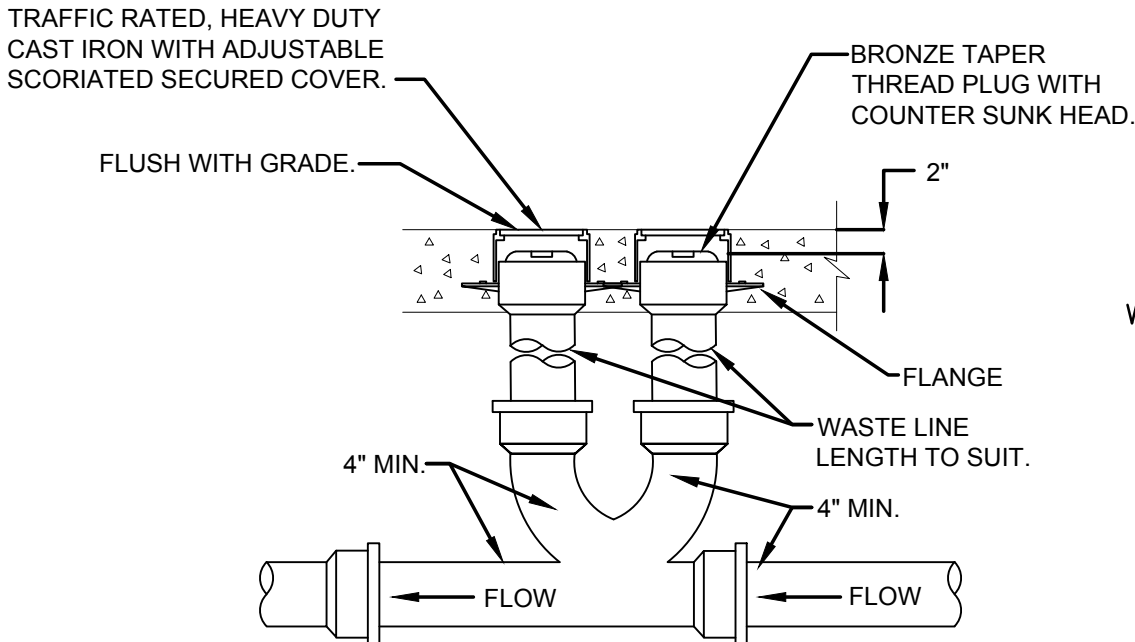


- GENERAL PLUMBING NOTES**
- ALL WORK AND MATERIALS SHALL BE IN COMPLIANCE WITH THE 8TH EDITION OF THE FLORIDA BUILDING CODES (2023), AND ALL APPLICABLE CODES AS ADOPTED AND AMENDED BY THE INSPECTING AUTHORITIES. NOTHING IN THESE DRAWINGS IS TO BE CONSTRUCTED TO PERMIT WORK NOT CONFORMING TO THE APPLICABLE CODES. IN THE EVENT OF CONFLICT BETWEEN THE CODE REQUIREMENTS AND THE DRAWINGS OR SPECIFICATIONS THE MOST STRINGENT SHALL PREVAIL.
 - THESE DRAWINGS HAVE BEEN DEVELOPED FROM THE BEST AVAILABLE INFORMATION. CONTRACTOR SHALL FIELD VERIFY ALL FIELD CONDITIONS, DIMENSIONS, CLEARANCES, LOCATION OF EXISTING UTILITIES, ETC. PRIOR TO BIDDING, FABRICATION, OR INSTALLATION. DO NOT SCALE FROM THESE MANUFACTURER INSTALLATION DATA.
 - COORDINATE PLUMBING INSTALLATION AMONG TRADES TO AVOID INTERFERENCES.
 - CONTRACTOR SHALL NOT PASS SANITARY, DOMESTIC WATER, WENT PIPING OR ANY OTHER TYPE OF PLUMBING DIRECTLY OVER ANY ELECTRICAL EQUIPMENT. COORDINATE WITH ELECTRICAL CONTRACTOR TO MAINTAIN ANY REQUIRED CLEARANCES.
 - INSULATE ALL ABOVE GROUND HOT DOMESTIC WATER PER SPECIFICATIONS.
 - THE CONTRACTOR SHALL FURNISH ALL LABOR, INSTALL ALL MATERIAL AND EQUIPMENT AND INCLUDE SERVICES AND INCIDENTALS TO THE INSTALLATION OF WORK INVOLVED FOR A COMPLETE AND OPERATING FACILITY.
 - CONTRACTOR SHALL BE RESPONSIBLE FOR ASSEMBLING ANY EQUIPMENT SHIPPED IN SECTIONS, IN ACCORDANCE WITH MANUFACTURER'S INSTRUCTIONS.
 - IT SHALL BE THE RESPONSIBILITY OF THE CONTRACTOR TO OBTAIN ALL REQUIRED PERMITS, INSPECTIONS, AND PAY ALL FEES REQUIRED FOR THIS JOB.
 - THE PIPING SYSTEM SHALL BE ARRANGED SO AS TO PREVENT WATER HAMMER, EACH ISOLATED FIXTURE SHALL HAVE A WATER HAMMER ARRESTOR.
 - THE PLUMBING CONTRACTOR SHALL PROVIDE AND INSTALL STANDARD 1/2"X3/8" COMPRESSION ANGLE STOPS ON ALL WATER LINES UNLESS ANOTHER TYPE OF VALVE IS SPECIFIED.
 - SANITARY SEWER AND VENT PIPING SHALL BE SCHEDULE 40 PVC UNLESS LOCATED IN AN HVAC RETURN PLENUM. SANITARY AND VENT PIPING LOCATED IN AN HVAC RETURN PLENUM TO BE CAST IRON.
 - ALL VENTS TO PENETRATE THROUGH ROOF (VTR) AND SHALL EXTEND A MINIMUM OF 12" ABOVE ROOF AND SHALL TERMINATE A MINIMUM OF 10'-0" FROM ALL OUTSIDE AIR INTAKES.
 - ALL ROOF PENETRATIONS FOR PLUMBING PIPING SHALL BE MADE IN COORDINATE WITH ARCHITECTURAL.
 - COPPER PIPING JOINTS SHALL BE SOLDERED USING SOLDER FILLER METAL (ASTM B-32) 95-5 TINANTIMONY.
 - ALL PENETRATIONS THROUGH MASONRY WALLS WILL BE CORE DRILLED AND SLEEVED.
A. SLEEVES ARE REQUIRED WHERE A PIPE PASSES THROUGH A WALL OR FLOOR. PIPES PASSING THROUGH A WALL OR FLOOR MUST BE INDIVIDUALLY SLEEVED UNLESS APPROVED BY ARCHITECT.
B. SLEEVES SHALL FINISH FLUSH WITH THE WALL FINISH AND SHALL FINISH 1/4" ABOVE FINISH FLOOR.
C. SLEEVES SHALL BE AS FOLLOWS:
 - THROUGH MASONRY WALLS-GALVANIZED STEEL PIPE, CUT EDGES PAINTED.
 - THROUGH PARTITIONS AND FLOOR -- SCHEDULE 40 PVC.
 - FLOORS DRAINS NOT REQUIRED
 - LABEL ALL PIPING PER ANSI STANDARDS WITH SERVICE AND TENANT SPACE. LABELS MUST BE LEGIBLE FROM FINISHED FLOOR WITH CEILING REMOVED.
 - PROVIDE ALL BACKING, SUPPORTS AND CARRIERS FOR FIXTURES.
 - CONTRACTOR SHALL PROVIDE APPROVED ACCESS DOORS IN FRAMED HOLES FOR ALL VALVES AND TRAP PRIMERS WHICH MUST BE LOCATED IN INACCESSIBLE LOCATIONS.
 - ALL WATER PIPING SHALL BE PITCHED IN DIRECTION OF FLOW TO ALLOW FOR SYSTEM DRAINING.
 - INSTALL WATER MAIN SHUT-OFF VALVE UPSTREAM FROM PRESSURE REGULATOR.
 - INSTALL WATER PRESSURE REGULATOR WHERE AVAILABLE UTILITY PRESSURE EXCEEDS 70 PSI. SET PRESSURE REGULATOR AT 65 PSI.
 - ROUTE WATER PIPING IN SALES AREA, OVERHEAD AS HIGH AS POSSIBLE.
 - DRAIN, WASTE AND VENT LINES SHALL PASS INSPECTION UNDER HEAD OF WATER BY SYSTEM WITH WATER TO TOP OF HIGHEST VENT STACK.
 - WATER LINES SHALL PASS INSPECTION OF FOUR (4) HOURS UNDER 150 PSI PRESSURE. BEFORE ANY USE OF SYSTEM IS MADE FOR DOMESTIC PURPOSES, IT SHALL BE DISINFECTED BY SLOWLY FILLING WITH WATER TO WHICH A DISINFECTING AGENT HAS BEEN INJECTED AT A RATE OF 50 P.P.M. OF CHLORINE, WHICH SHOULD BE ALLOWED TO STAND IN THE PIPING FOR AT LEAST 24 HOURS, AFTER WHICH TESTS FOR RESIDUAL CHLORINE SHALL SHOW NOT LESS THAN FIVE (5) P.P.M. OF RESIDUAL CHLORINE AT EVERY WATER OUTLET IN THE BUILDING. IF THE RESIDUAL IS LESS THAN FIVE PPM, THE DISINFECTION SHALL BE REPEATED UNTIL THE REQUIRED RESIDUAL IS OBTAINED AT EVERY OUTLET. AFTER REQUIRED RESIDUAL IS OBTAINED AT EVERY OUTLET, THE SYSTEM SHALL BE FLUSHED UNTIL THE CHLORINE LEVEL AT EVERY OUTLET IS REDUCED TO THAT OF INCOMING WATER SUPPLY. IF STRICTER LOCAL REQUIREMENTS ARE IN PLACE, THOSE SHALL BE FOLLOWED.

PLUMBING FIXTURE SCHEDULE				REFER TO MATERIALS ON P2			
MARK	DESCRIPTION	MODEL #	REMARKS	HW CONNECTION	CW CONNECTION	WASTE CONNECTION	VENT CONNECTION
LAV-1	ADA LAVATORY	0355.012	20"X18" WALL HUNG ADA LAVATORY W/ FRONT OVERFLOW, CONCEALED HANGERS & 4" CENTERS. AMERICAN STANDARD LUCERNE #0355.012 OR EQUAL. FAUCET SHALL BE POLISHED CHROME-PLATED CAST BRASS BODY WITH 4" SPOUT, 4" BRASS WRIST BLADE, 0.5 GPM SPRAY AND GRID STRAINER DRAIN. AMERICAN STANDARD MONTERREY #5502.175 WITH WATTS MODEL USG-B-M1 TEMPERING VALVE OR EQUAL. INSULATE EXPOSED DRAIN & WATER PIPES WITH TRUEBRO LAV GUARD KIT #102 E-Z. PROVIDE SUPPLY LINES, STOP VALVES & P-TRAP.	1/2"	1/2"	2"	1-1/2"
WC-1	ADA WATER CLOSET	211AA.104	FLOOR MOUNTED ADA VITREOUS CHINA ELONGATED 1.6 FLUSH GALLON CLOSE COUPLED TWO PIECE SIPHON JET WATER CLOSET & FLUSH TANK WITH 12" ROUGH-IN. AMERICAN STANDARD CHAMPION 4 "RIGHT HEIGHT" #2002.014 OR EQUAL. PROVIDE STOP VALVE, FLEXIBLE SUPPLY LINE & OPEN FRONT SEAT (AMERICAN STANDARD #5901.100 OR EQUAL).	-	1/2"	4"	2"
WC-2	ADA WATER CLOSET RIGHT-HAND TRIP LEVER	211AA.105	FLOOR MOUNTED ADA VITREOUS CHINA ELONGATED 1.6 FLUSH GALLON CLOSE COUPLED TWO PIECE SIPHON JET WATER CLOSET & FLUSH TANK WITH 12" ROUGH-IN. AMERICAN STANDARD CHAMPION 4 "RIGHT HEIGHT" #2002.014 OR EQUAL WITH ALTERNATE TANK ASSEMBLY #4266.804 (RIGHT HAND TRIP LEVER). PROVIDE STOP VALVE, FLEXIBLE SUPPLY LINE & OPEN FRONT SEAT (AMERICAN STANDARD #5901.100 OR EQUAL).	-	1/2"	4"	2"
EW-1	ELECTRIC WATER HEATER	EJC-10	PROVIDE 10 GALLON ELECTRIC WATER HEATER. 1.65KW @ 120V WITH MANUFACTURER SUPPLIED TEMPERATE AND PRESSURE RELIEF VALVE. (A.O. SMITH #EJC-10, OR EQUAL). SET WATER HEATER TEMPERATURE AT 110°F MAXIMUM. PROVIDE THERMAL EXPANSION TANK. (AMTROL THERM-X-TROL ST-12, OR EQUAL). EXPANSION TANK SUPPORT: IT IS THE CONTRACTOR'S RESPONSIBILITY TO PROVIDE ADEQUATE SUPPORT FOR THE EXPANSION TANK. SUPPORT TO ADJACENT WALL OR FROM EXISTING STRUCTURE ABOVE WITH UNISTRUT. DO NOT SUPPORT FROM PIPE ALONE. PROVIDE DRAIN PAN UNDER WATER HEATER. PROVIDE SEISMIC STRAPPINGS ON WATER HEATER. TERMINATE (EW-1) DRAIN LINE IN MOP SINK (MS-1). PROVIDE FULL SIZE T&P RELIEF LINE. REFER TO WATER HEATER DETAIL ON SHEET P2 FOR ADDITIONAL INFORMATION.	3/4"	3/4"	-	-
MS-1	MOP SINK	MSB-24-24	24" X 24" MOLDED STONE MOP SERVICE BASIN, WITH 3" DRAIN. FIAT #MSB-2424 OR EQUAL. PROVIDE SERVICE FAUCET WITH PAIL HOOK & INTEGRAL VACUUM BREAKER, MOP BRACKET, FLAT STAINLESS STEEL STRAINER AND HOSE & BRACKET. FIAT #830 AA, 889 CC, 1453 BB & 832 AA OR EQUAL. PROVIDE SUPPLY LINES AND P-TRAP.	3/4"	3/4"	3"	2"
EDF-1	BARRIER FREE ELECTRIC DRINKING FOUNTAIN	EZTLRDDC	TWO-STATION, WALL MOUNTED, ELECTRIC DRINKING FOUNTAIN, BARRIER-FREE ACCESS (ADA), FRONT ONLY EASY TOUCH CONTROL, HIGH UNIT ON RIGHT. ELKAY #EZTLRDDC OR EQUAL. PROVIDE SUPPLY LINE, STOP VALVE & P-TRAP. PROVIDE CANE APRON AS REQUIRED.	-	1/2"	2"	1-1/2"
WH-1	WALL HYDRANT	Z-1320	FREEZE-PROOF WALL HYDRANT WITH BRONZE BODY & ANTI-SIPHON VACUUM BREAKER, BOX AND LOCKING COVER. PROVIDE WITH HOSE CONNECTION AND MOUNT AT 24" ABOVE GRADE. WOODFORD #B65 OR EQUAL.	-	3/4"	-	-
WCO-1	WALL CLEAN-OUT	Z-1441	SIZE & INSTALL AS SHOWN ON PLANS. JOSAM, ZURN OR EQUAL.	-	-	AS SHOWN ON PLANS	-
ECO-1	EXTERIOR CLEAN-OUT		PROVIDE TRAFFIC RATED, 2-WAY, EXTERIOR CLEAN-OUT. TYLER PIPE #003519, OR EQUAL.	-	-	4"	-
FCO-1	FLOOR CLEAN-OUT	Z1400	PROVIDE ADJUSTABLE FLOOR CLEAN-OUT WITH WATERTIGHT TAPERED THREADED PLUG AND ROUND SCORIATED SECURED TOP, ADJUSTABLE TO FINISHED FLOOR. SIZE & INSTALL AS SHOWN ON PLANS. JOSAM, ZURN OR EQUAL.	-	-	AS SHOWN ON PLANS	-
RP-1	HOT WATER RECIRC PUMP		HOT WATER RECIRCULATION PUMP. TACO#003B. 115 V, 0.43 AMP, 1/40 HP, 1/2" CONNECTIONS, 4 FT HEAD, BALANCE VALVE, AQUASTAT & 7-DAY PROGRAMMABLE TIMER. PROVIDE	3/4"	3/4"	-	-
NOTES: 1) PROVIDE TRUEBRO INSULATION KIT #102 ON PUBLIC LAVATORIES.							

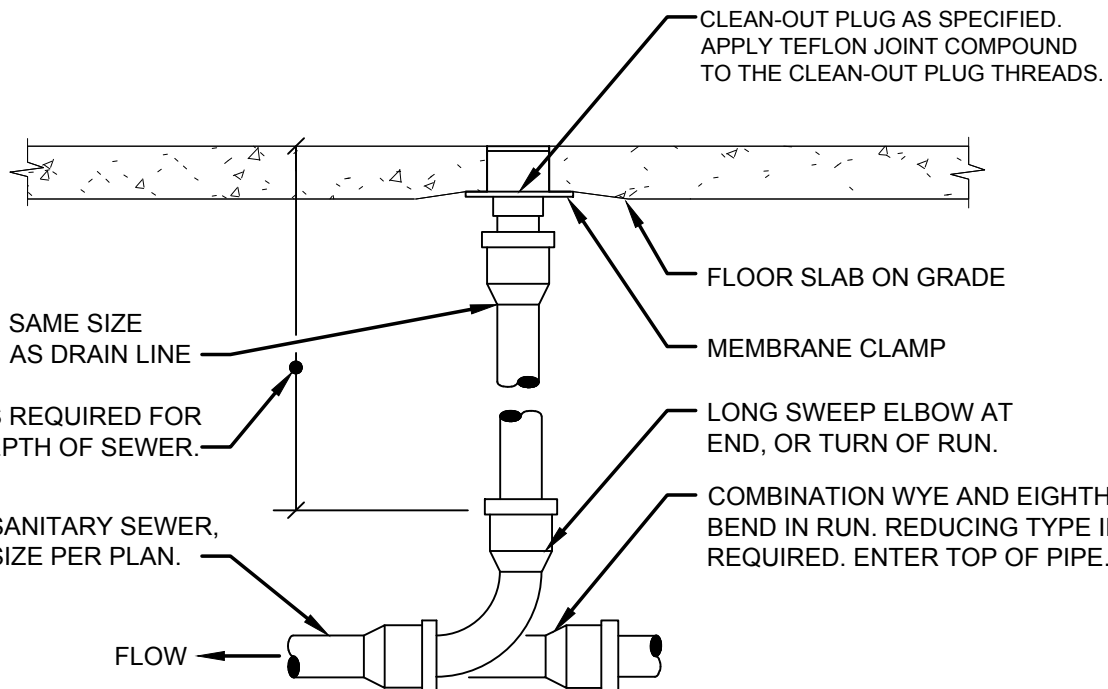
- MATERIALS**
- DRAIN, WASTE AND VENT
A. SCHEDULE 40 AND 80 PVC OR ABS PIPING WITH DWV PATTERN FITTINGS TO BE USED UNLESS OTHERWISE REQUIRED BY LOCAL CODE.
 - HOT AND COLD WATER
A. ABOVE GRADE:
a) TYPE "L" COPPER TUBING, HARD TEMPER, COLD DRAWN WITH WROUGHT COPPER LEAD FREE SWEAT FITTINGS. CONNECTIONS TO FIXTURES AND EQUIPMENT SHALL BE MADE WITH 85% RED BRASS IPS SIZE PIPE OR COMPRESSION ANGLE STOPS. PROVIDE DIELECTRIC UNIONS WHERE CONNECTING PIPING OF DISSIMILAR MATERIALS. NOTE: INSULATE ALL HOT WATER PIPING WITH 1" THICK ARMAFLEX PIPE KITS (FLEXIBLE UNICELLULAR).
b) TYPE "K" COPPER TUBING, HARD OR SOFT TEMPER, WITH WROUGHT COPPER LEAD FREE SWEAT FITTINGS. NOTE: NO FITTINGS SHALL BE PERMITTED BELOW GRADE INSIDE BUILDING.
 - BELOW GRADE.

SYMBOL LEGEND	
— SAN —	SANITARY PIPING
— SAN BLW —	SANITARY PIPING BELOW
— V —	VENT PIPING
— GAS —	GAS PIPING
— CW —	COLD WATER PIPING
— HW —	HOT WATER PIPING
⌵	SHUT-OFF VALVE
⌵	BACKFLOW PREVENTER
⌵	PRESSURE REGULATOR
⌵	WALL CLEANOUT
⌵	FREEZE-PROOF HOSE BIBB
⌵	2-WAY EXTERIOR CLEANOUT
⌵	FLOOR CLEANOUT



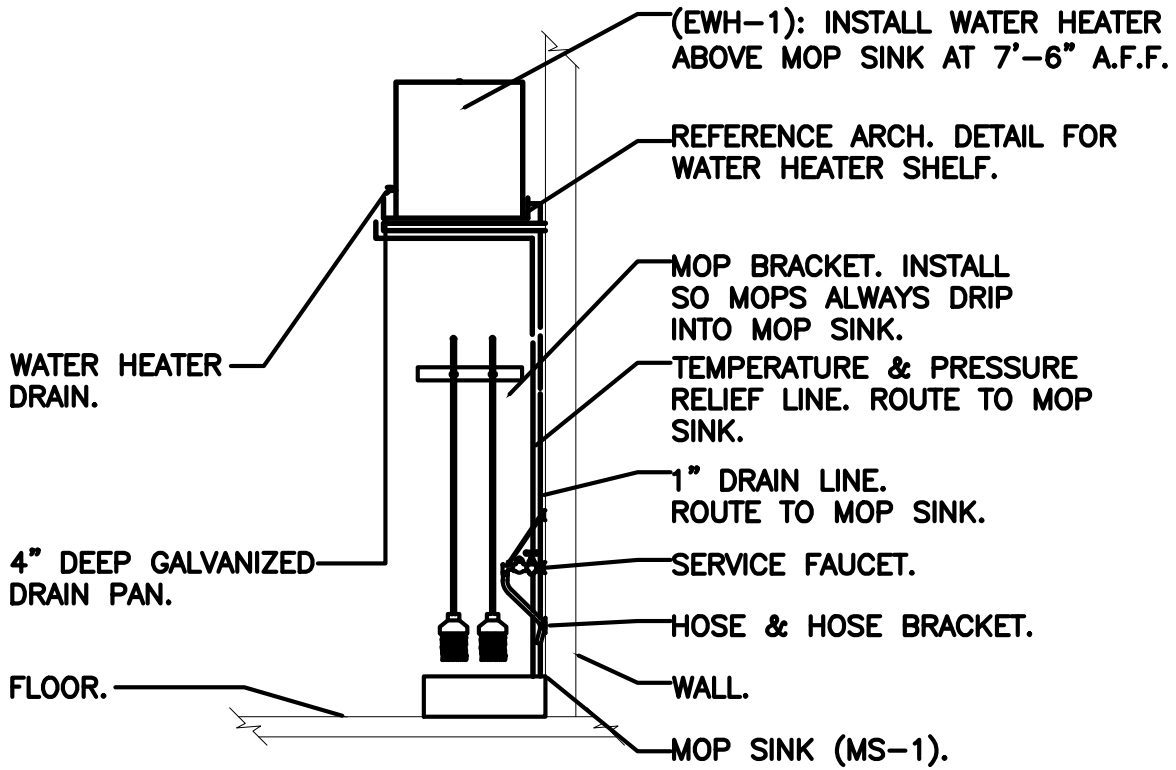
- NOTES:
1. CLEAN-OUT SHALL BE TRAFFIC RATED.
2. ECO-1 SHALL BE INSTALLED WITHIN 5'-0" OF THE BUILDING EXTERIOR.

1 2-WAY YARD CLEANOUT
P2.1 SCALE: N.T.S.

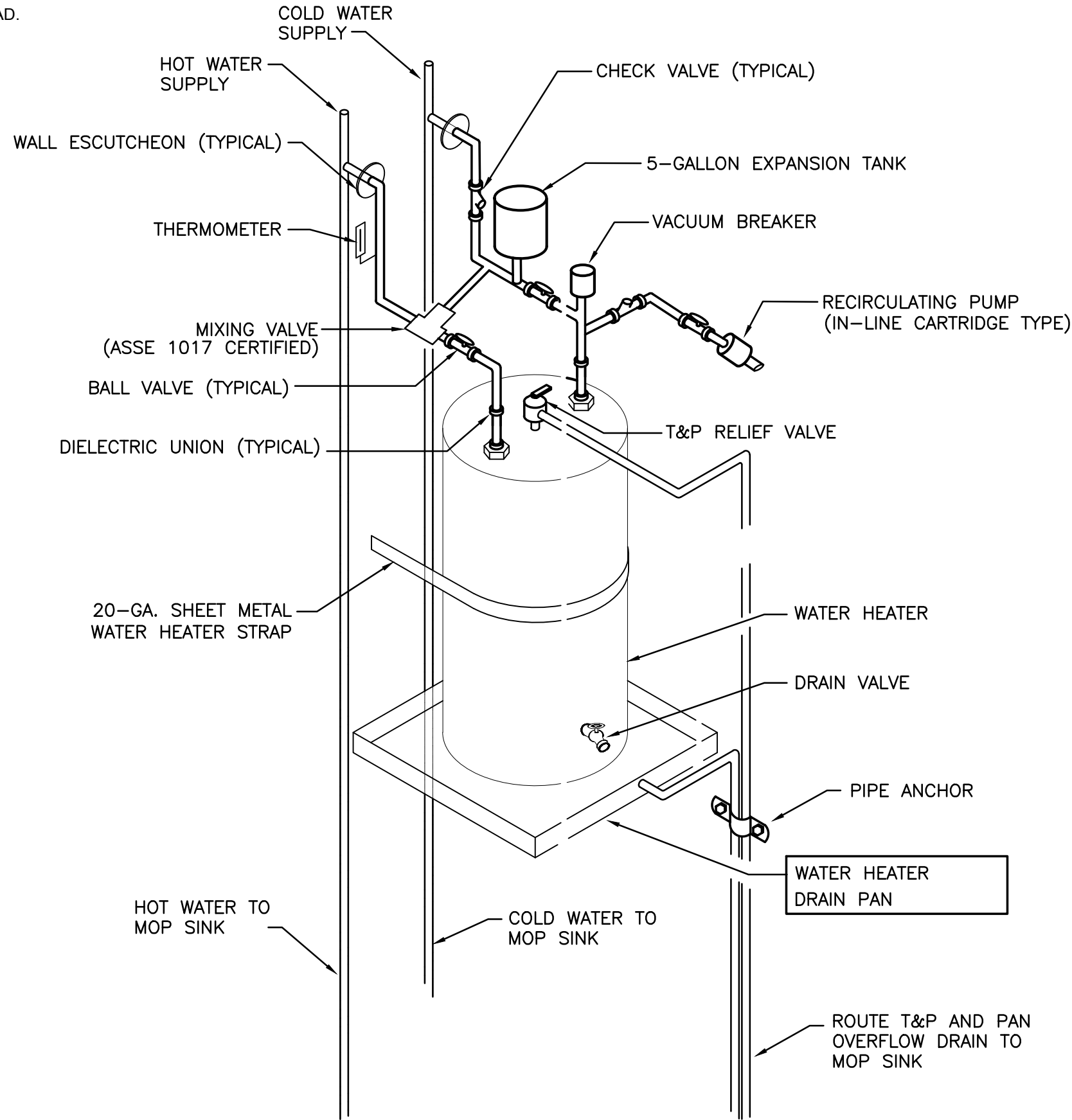


- NOTES:
1. REFER TO SCHEDULE FOR ADDITIONAL INFORMATION. LOCATE FLOOR CLEAN-OUT AT END OF RUN, TURNS OF PIPE GREATER THAN 45°, 60° INTERVALS ON STRAIGHT RUNS, AND/OR WHERE SHOWN ON PLANS & RISERS. PROVIDE BACKFILL AS REQUIRED. LOCATE CLEAN-OUT WHERE THERE IS 18" CLEAR AROUND, FOR ACCESSIBILITY. COORDINATE WITH LOCAL CODES AND AUTHORITY HAVING JURISDICTION FOR ANY ADDITIONAL REQUIREMENTS.
2. PROVIDE FLOOR CLEAN-OUT WITH ADJUSTABLE COVER. CLEAN-OUT COVER SHALL BE SUITABLE FOR RESPECTIVE FLOOR COVERING (RECESSED FOR TILE, SCORIATED FOR UNFINISHED FLOORS, ETC.). CLEAN THE TOP OF EXPOSED FLOOR CLEAN-OUT AFTER INSTALLATION.

3 FLOOR CLEANOUT
P2.1 SCALE: N.T.S.



4 WATER HEATER INSTALLATION DETAIL
P2.1 SCALE: N.T.S.



2 WATER HEATER PIPING SCHEMATIC DETAIL
P2.1 SCALE: N.T.S.

THIS ITEM HAS BEEN ELECTRONICALLY SIGNED & SEALED BY MATTHEW D. LEWIS, P.E. USING A DIGITAL SIGNATURE. PRINTED COPIES OF THIS DOCUMENT ARE NOT CONSIDERED SIGNED & SEALED AND THE SIGNATURE MUST BE VERIFIED ON ANY ELECTRONIC COPIES.

STEPANEK-LEWIS AND ASSOCIATES
2257 TWELVE OAKS WAY, SUITE 103
WESLEY CHAPEL, FL 33544
PH (813) 991-1248
REGISTRY # 8397
24-011

MATTHEW D. LEWIS, P.E. FL LIC#56189

CIVIL ENGINEERING DESIGN COORDINATION NOTICE							
NOTICE TO ALL PARTIES HAVING AN INTEREST IN THIS CONSTRUCTION PROJECT: 1. CIVIL ENGINEERING FOR THIS PROJECT IS BEING PERFORMED BY OTHERS. 2. CONTRACTORS RELYING ON DOCUMENTS NOT COORDINATED WITH THE CIVIL ENGINEERING WORK SHALL DO SO AT THEIR OWN RISK. 3. COORDINATION WITH THE CIVIL ENGINEERING DOCUMENTS HAS BEEN COMPLETED ONLY AS SHOWN BELOW.							
CIVIL ENGINEERING CONSULTANT IS:				CHW CONTACT: C. MENHENNETT PHONE: (386) 518-6514			
CIVIL SHEET DWG. NO.	CIVIL SHEET DWG. TITLE	REV. NO.	REV. DATE	REV. NO.	REV. DATE	REV. NO.	REV. DATE
C3.00	UTILITY PLAN	-	2-6-24				
COORDINATION CHECKED BY:				INITIAL	DATE	INITIAL	DATE
				JL	2-14-24		

JAMES BLYTHE

REGISTERED ARCHITECT
RA LEED AP BD+C
1459 SW 74 DR
GAINESVILLE, FL 32607
AR#4452

THESE DRAWINGS HAVE BEEN PREPARED, IN PART, BASED UPON INFORMATION FURNISHED BY OTHERS. WHILE THIS ARCHITECT ASSUMES NO RESPONSIBILITY FOR THE ACCURACY OF THESE DRAWINGS FOR ANY ERRORS OR OMISSIONS THAT MAY HAVE BEEN INCORPORATED INTO IT AS A RESULT OF INCORRECT INFORMATION, THE ARCHITECT DOES NOT WARRANT THE ACCURACY OF THIS DOCUMENT. ALL WORK SHALL COMPLY WITH ANY AND ALL APPLICABLE CODES AND ORDINANCES. SUPERINTENDENTS ARE RESPONSIBLE FOR THE PROPER INTERPRETATION OF THE INFORMATION, DESIGN AND BUILDING TECHNIQUES HELD WITHIN THESE DRAWINGS. THIS NOTICE IS THE EXCLUSIVE PROPERTY OF THE PARTIES NOTED ON THIS TITLE BLOCK.

CONCEPT
1440 SW 74th Dr, Suite 200 / GAINESVILLE, FL 32607
PH 877-309-1029 / FAX 800-218-7809
WWW.CONCEPTCOMPANIES.NET

DOLLAR GENERAL

US HWY 27
FT WHITE, FL 32038

2023 PROTOTYPE - PLAN "DGP-B" - 10,640 SQ. FT.
STORE # 28861

DRAWING DATE / DRAWN BY:
03/05/24 - JEM

REVISION DATE / REVISED BY:

PROJECT NUMBER:
4000.249

DRAWING TITLE:
NOTES & DETAILS

SHEET NO.

P0

THESE DRAWINGS HAVE BEEN PREPARED, IN PART BASED UPON INFORMATION FURNISHED BY OTHERS, WHILE THIS INFORMATION IS BELIEVED TO BE RELIABLE, THE ARCHITECT ASSUMES NO RESPONSIBILITY FOR THE ACCURACY OF THESE DRAWINGS FOR ANY ERRORS OR OMISSIONS THAT MAY HAVE BEEN INCORPORATED INTO IT AS A RESULT OF INCOMPLETE OR INACCURATE INFORMATION. THE ARCHITECT'S RESPONSIBILITY IS LIMITED TO THAT WHICH IS SPECIFICALLY SET FORTH IN THIS DOCUMENT. HE IS ADVISED TO OBTAIN VERIFICATION OF ALL INFORMATION, AND TO OBTAIN VERIFICATION OF ALL APPLICABLE CODES AND ORDINANCES. SUPERINTENDENTS ARE TO VERIFY ALL DIMENSIONS PRIOR TO CONSTRUCTION. ALL DIMENSIONS SHALL BE SHOWN ON THE DRAWINGS. THE ARCHITECT'S RESPONSIBILITY IS LIMITED TO THE EXCLUSIVE PROPERTY OF THE PARTIES NAMED ON THIS CONTRACT.

JS HWY 27

ET WHITE, FL 32038

STORE # 25861

DRAWING DATE: / DRAWN BY:
09/05/04 JEM

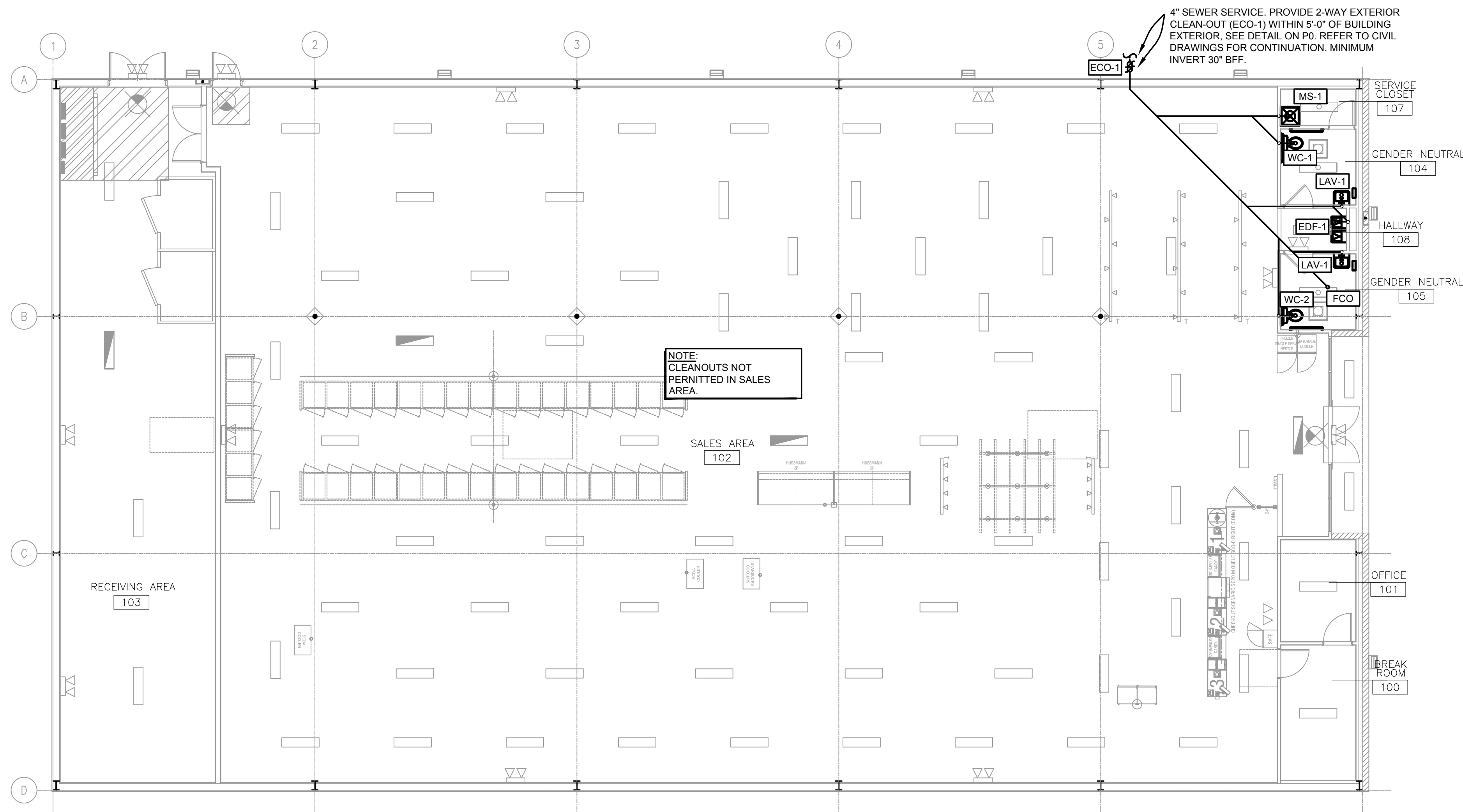
REVISION DATE: / REVISED BY:

PROJECT NUMBER:

DRAWING TITLE:

SHEET NO.

P1



1 SANITARY PLAN
P1 SCALE: 1/8" = 1'-0"



NOTES

1. CONTRACTOR RESPONSIBLE FOR ALL PUBLIC UTILITY CONNECTIONS (WATER, ELECTRIC, SEWER) AS WELL AS INFRASTRUCTURE REQUIRED BY UTILITY COMPANY.
2. PROVIDE WALL MOUNTED CLEAN OUTS AT LAVATORIES.

SANITARY INVERT NOTE:
REQUIRED INVERT AT POINT OF CONNECTION (5 FT FROM EXTERIOR WALL) TO EXISTING SEWER SERVICE IS APPROXIMATELY 1'-11" BELOW FINISHED FLOOR BASED ON TOTAL LENGTH OF 35' SLOPED AT 1/8" PER FT AND STARTING INVERT OF 18" BELOW FINISHED FLOOR. CONTRACTOR TO FIELD VERIFY THE INVERT AND LOCATION OF SANITARY LINE AS SHOWN ON CIVIL DRAWINGS.

NOTE:
SANITARY SEWER AND SANITARY VENT PIPE ROUTING ARE DIAGRAMMATIC
ONLY, COORDINATE PIPE ROUTING WITH FIELD CONDITIONS. REFER TO PIPING
DIAGRAMS.

4" VENT THRU WALL

4"

2"

2"

MS-1

WC-1

3"

4"

2"

2"

LAV-1

EDO-1

3"

4"

2"

LAV-2

EDO-2

3"

4"

2"

WC-2

4"

3"

2"

1.5"

4" SEWER SERVICE. PROVIDE 2-WAY EXTERIOR CLEAN-OUT (ECO-1) WITHIN 5'-0" OF BUILDING EXTERIOR. SEE CIVIL DRAWINGS FOR CONTINUATION.

SANITARY SEWER NOTES:

1. EWH-1 TO DRAIN INTO MOP SINK (MS-1)
2. REFER TO SHEET P1 FOR ADDITIONAL INFORMATION

2 SANITARY & VENT ISO
P1 SCALE: N.T.S. 13-DFU

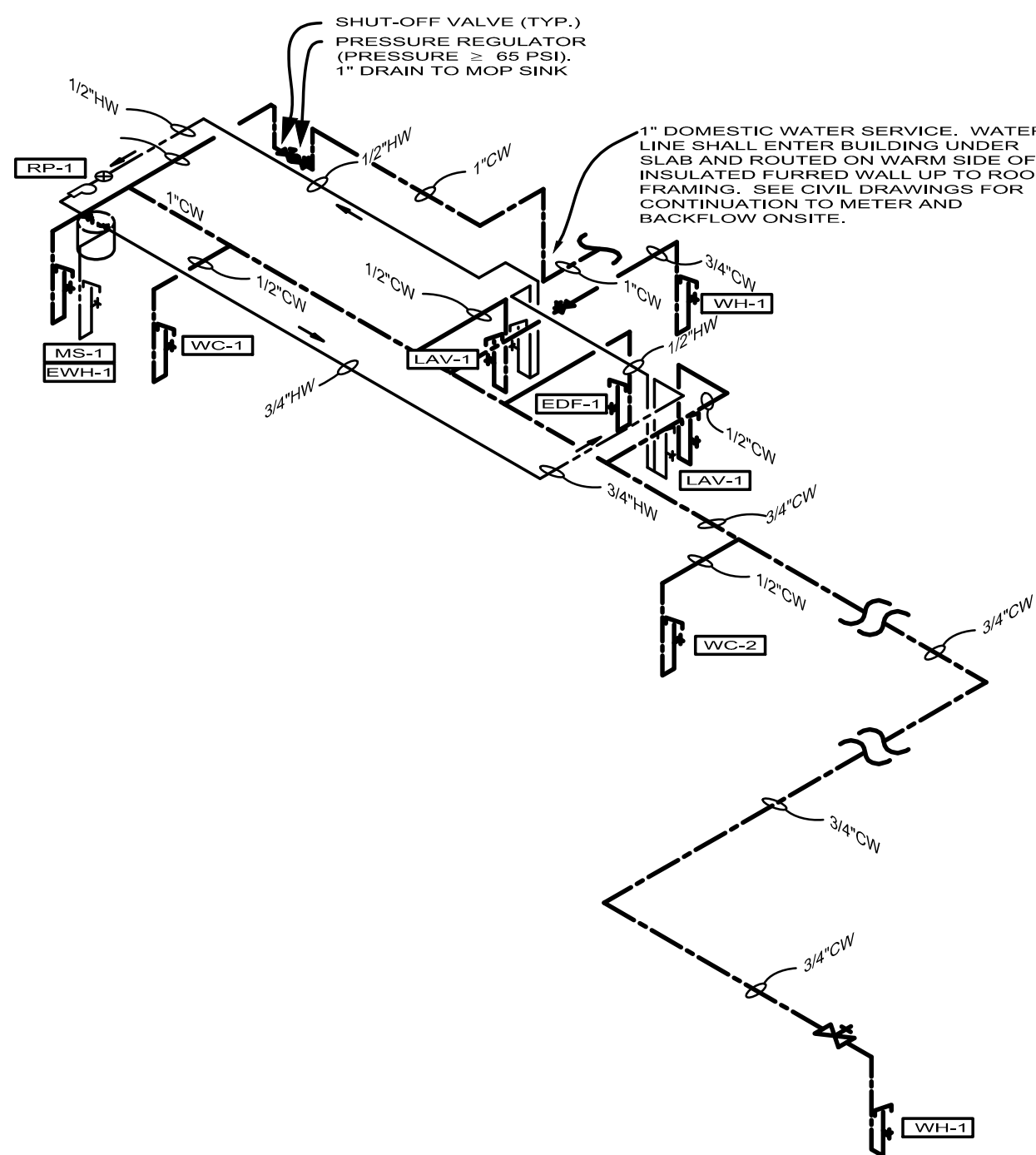
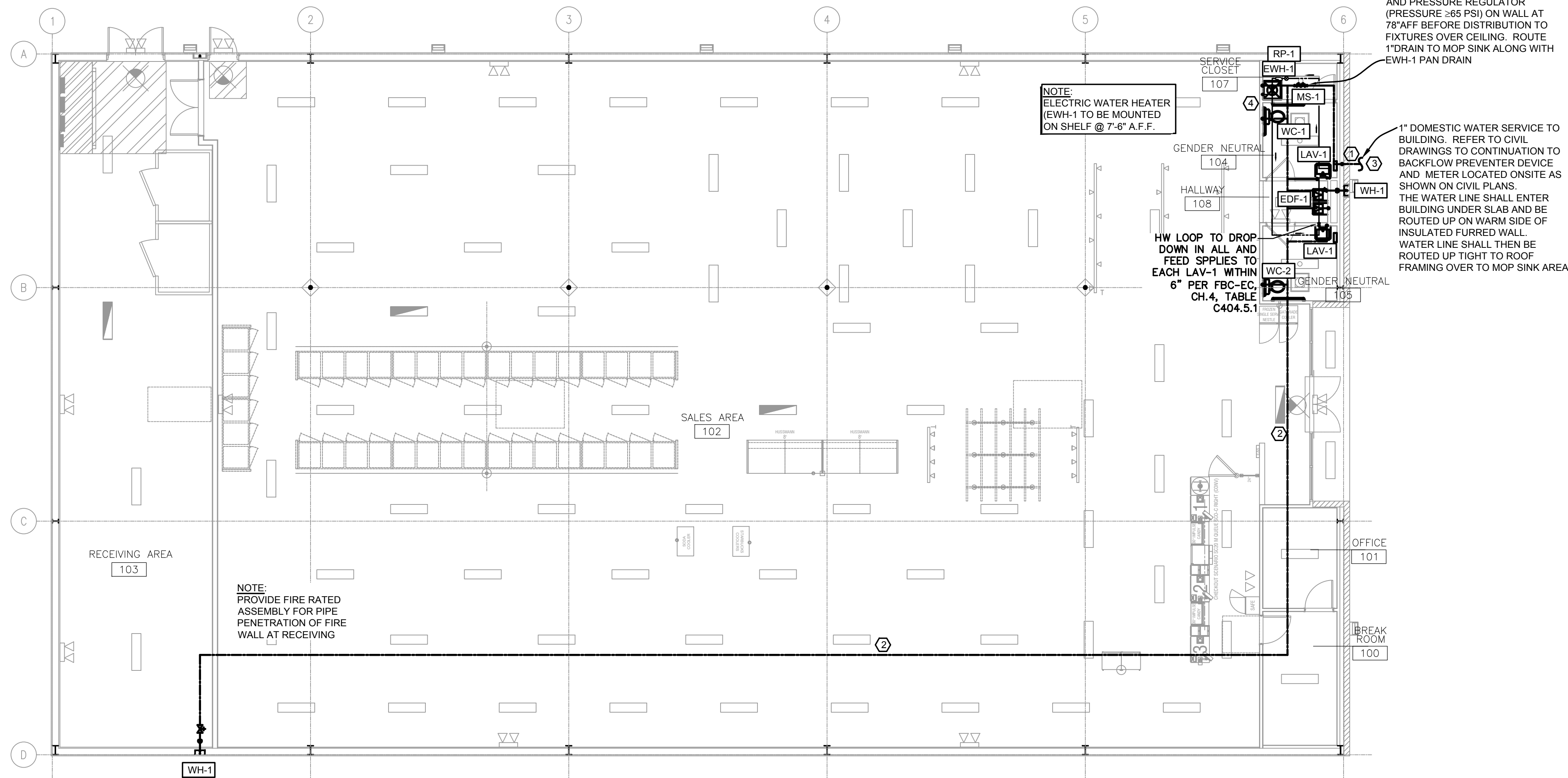
THIS ITEM HAS BEEN ELECTRONICALLY
SIGNED & SEALED BY MATTHEW D. LEWIS
PE USING A DIGITAL SIGNATURE.
PRINTED COPIES OF THIS DOCUMENT
ARE NOT CONSIDERED SIGNED & SEALED
AND THE SIGNATURE MUST BE VERIFIED
ON ANY ELECTRONIC COPIES.

Matthew D. Lewis
No 56189
Digitally signed by
Matthew D. Lewis
Date: 2024.03.27
19:41:20 -0400



**STEPANEK-LEWIS
AND ASSOCIATES**
2257 TWELVE OAKS WAY, SUITE 10
WESLEY CHAPEL, FL 33544
PH (813) 991-1248
REGISTRY # 8397

MATTHEW D. LEWIS, P.E. FL LIC#56189



DOMESTIC WATER NOTES:
1. REFER TO CIVIL DRAWINGS FOR EXACT LOCATION OF CONNECTION POINT TO EXISTING DOMESTIC WATER PIPING.
2. PRESSURE REGULATOR TO BE ≥ 65 PSI.

2 DOMESTIC WATER ISO
P2 / SCALE: N.T.S. 16-WSFU

PLUMBING KEYED NOTES:

- ① 1" CW UP IN WALL WITH VALVE AND LOCKABLE ACCESS PANEL.
- ② PLUMBING CONTRACTOR TO RUN WATER LINE IN RECEIVING AND SALES AREA AS HIGH AS POSSIBLE OVERHEAD.
- ③ CONTRACTOR TO COORDINATE WATER METER SIZED WITH LOCAL WATER COMPANY AND CIVIL.
- ④ WATER HEATER MOUNTED ABOVE MOP SINK. ROUTE DRAIN PAN DRAIN AND T&P RELIEF VALVE DRAIN FROM WATER HEATER DOWN WALL TO MOP SINK BASIN AND SPILL INTO.

1 WATER PLAN
P2 / SCALE: 1/8" = 1'-0" NORTH

NOTES:

1. CONTRACTOR RESPONSIBLE FOR ALL PUBLIC UTILITY CONNECTIONS (WATER, ELECTRIC, SEWER) AS WELL AS INFRASTRUCTURE REQUIRED BY UTILITY COMPANY.
2. PROVIDE SHUT OFF VALVES AT WALL HYDRANTS AND AT WATER HEATER.
3. PROVIDE P.T. WOOD BLOCKING & STRAPS IN WALLS AS REQUIRED.



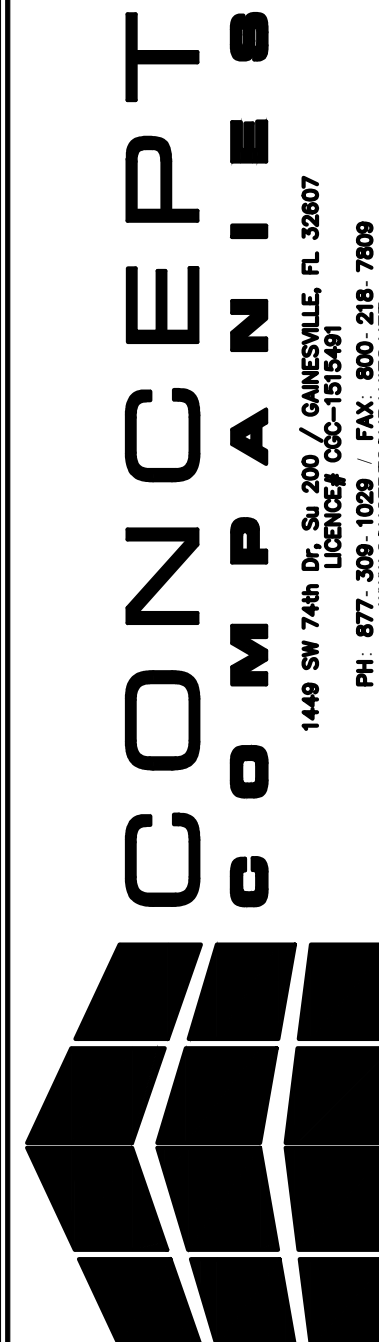
STEPANEK-LEWIS AND ASSOCIATES
2257 TWELVE OAKS WAY, SUITE 103
WESLEY CHAPEL, FL 33544
PH (813) 991-1248
REGISTRY # 8397 24-011

MATTHEW D. LEWIS, P.E. FL LIC#56189

JAMES BLYTHE

REGISTERED ARCHITECT
RA LEED AP BD+C
1459 SW 74 DR
GAINESVILLE, FL 32607
AR94452

THESE DRAWINGS HAVE BEEN PREPARED, IN PART, BASED UPON INFORMATION FURNISHED BY OTHERS. WHILE THIS ARCHITECT ASSUMES NO RESPONSIBILITY FOR THE ACCURACY OF THESE DRAWINGS FOR ANY ERRORS OR OMISSIONS THAT MAY HAVE BEEN INCORPORATED INTO IT AS A RESULT OF INCORRECT INFORMATION, THE ARCHITECT DOES NOT WARRANT THE ACCURACY OF THIS DOCUMENT. ALL WORK SHALL COMPLY WITH ANY AND ALL APPLICABLE CODES AND ORDINANCES. SUPERINTENDENTS ARE RESPONSIBLE FOR THE PROPER INSTALLATION OF THE WORK SHOWN HEREIN. INFORMATION, DESIGN AND BUILDING TECHNIQUES HELD WITHIN ARE THE EXCLUSIVE PROPERTY OF THE PARTIES NOTED ON THIS TITLE BLOCK.



DOLLAR GENERAL

US HWY 27
FT WHITE, FL 32038

STORE # 25861
2023 PROTOTYPE - PLAN / DGP-B - 10,640 SQ. FT.

DRAWING DATE / DRAWN BY:
03/05/24 - JEM

REVISION DATE / REVISED BY:

PROJECT NUMBER:
4000.249

DRAWING TITLE:
WATER PLAN

SHEET NO.

P2