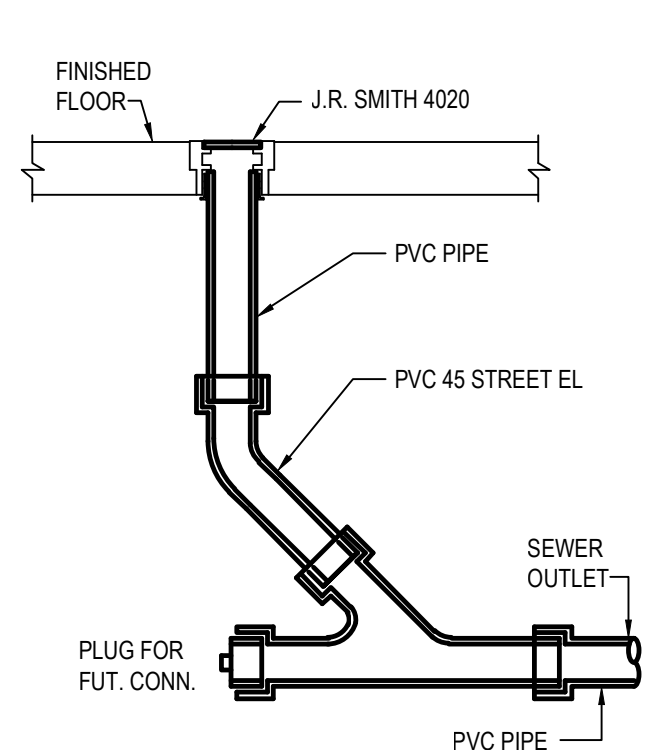
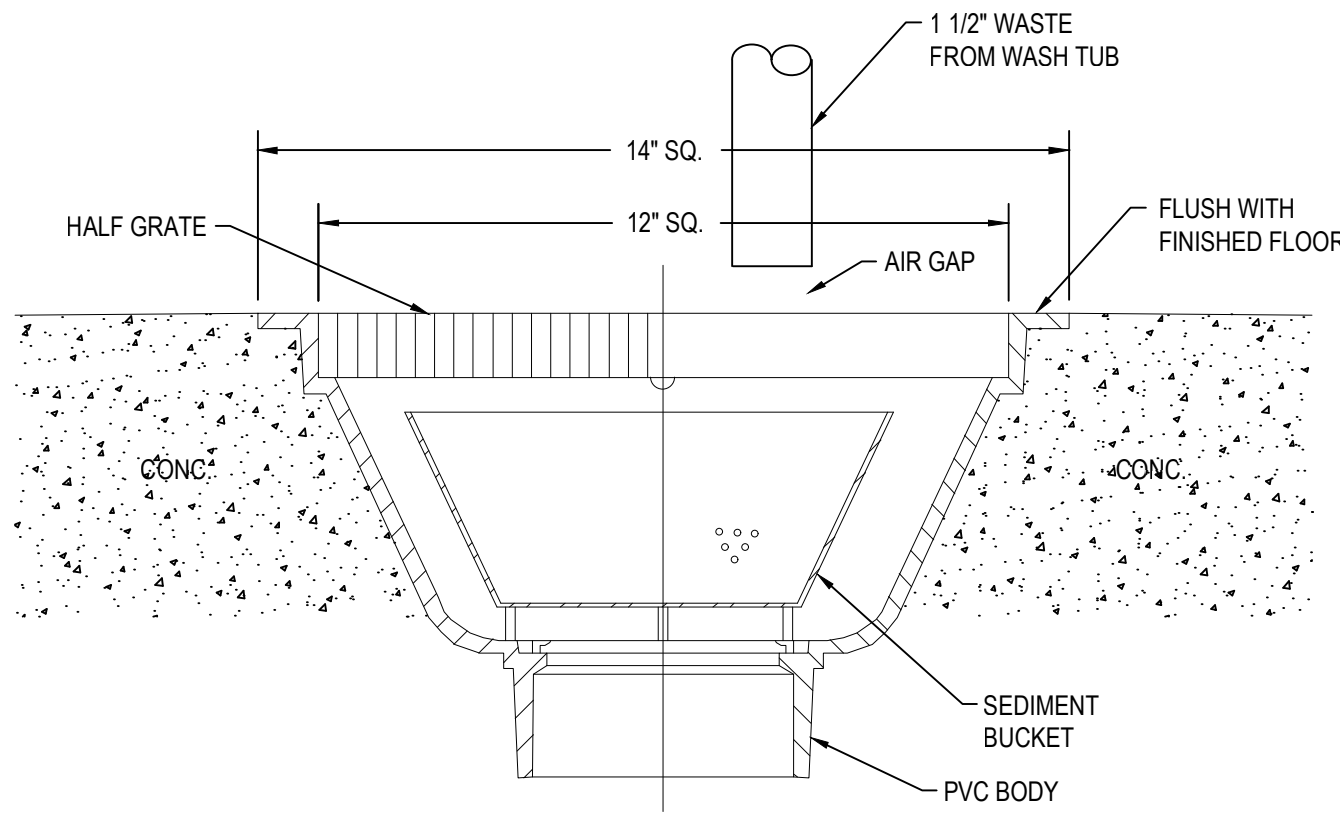


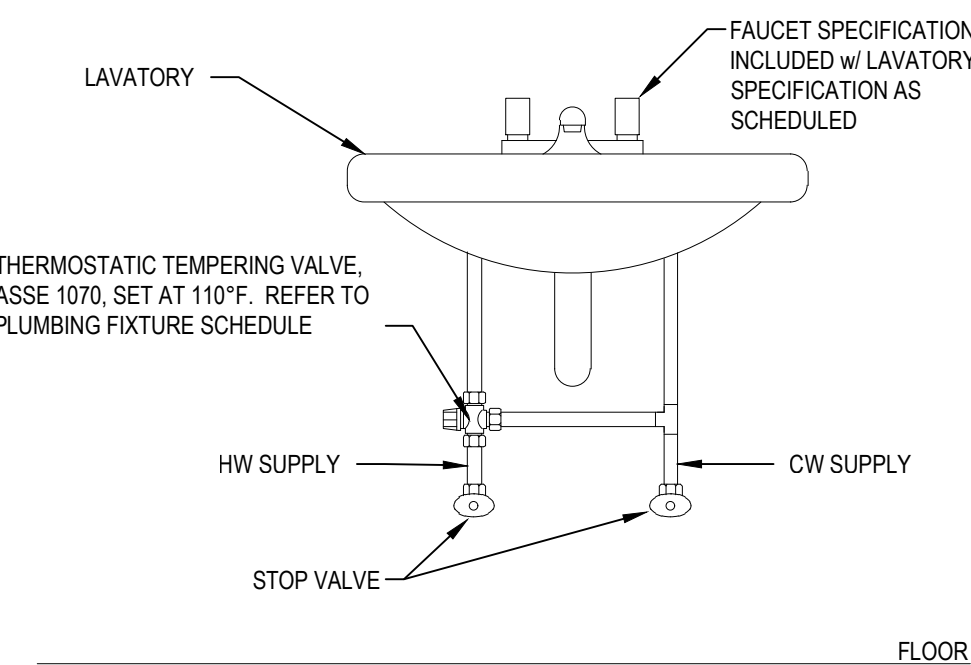
20 | CLEVIS HANGER DETAIL  
N.T.S.



16 | INTERIOR CLEANOUT DETAIL  
N.T.S.

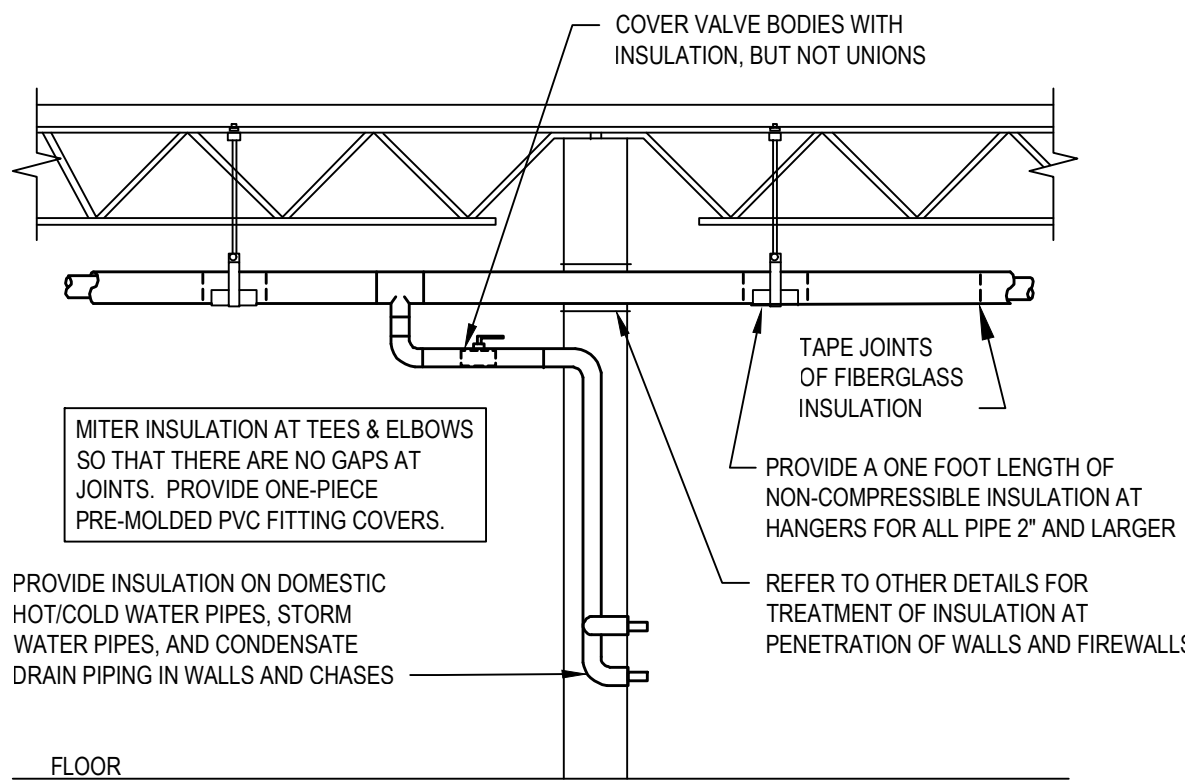


12 | FLOOR SINK DETAIL  
N.T.S.



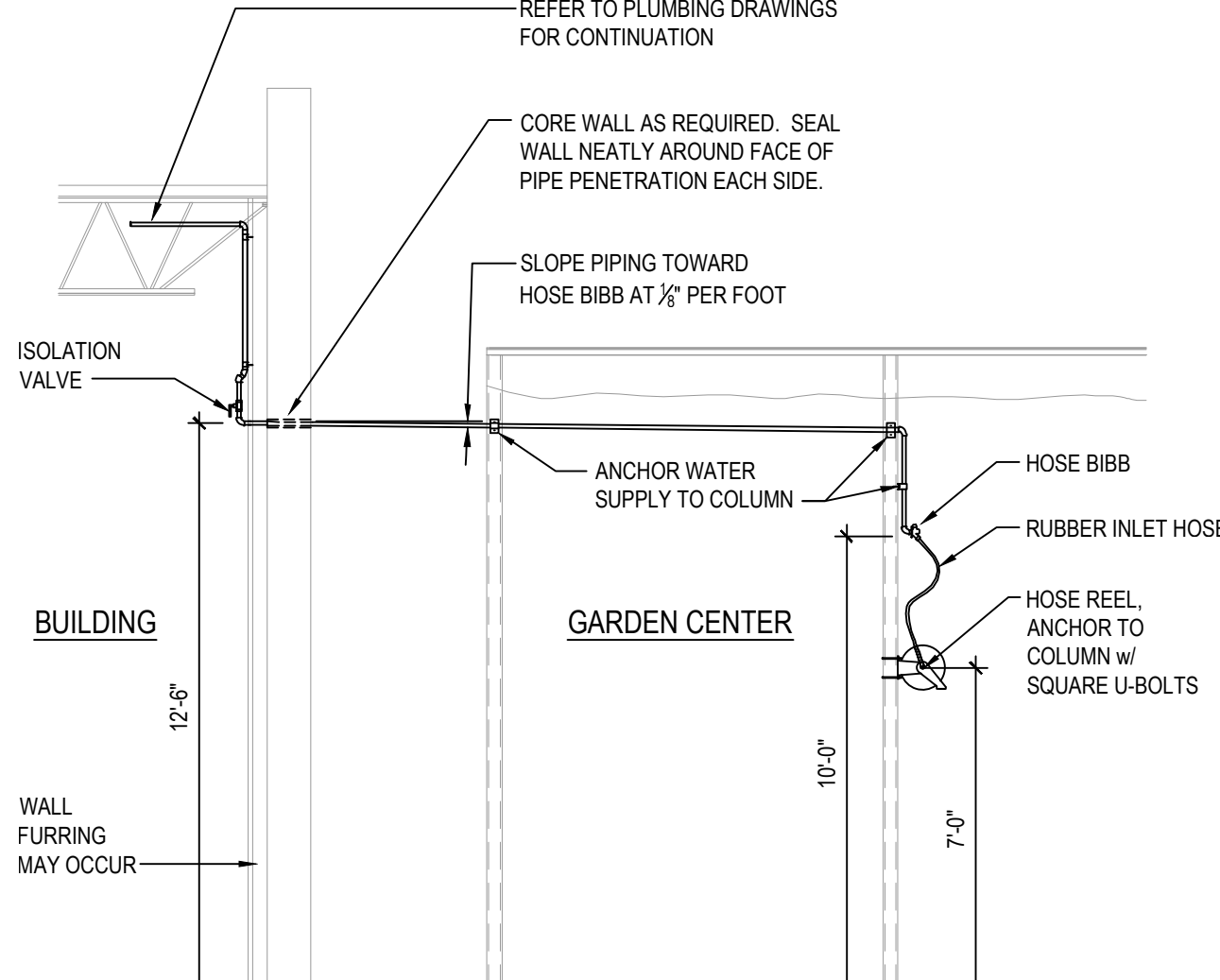
NOTE:  
INSULATE ALL EXPOSED WASTE & SUPPLY PIPING UNDER LAVATORY/SINK AS SCHEDULED.

15 | LAVATORY TEMPERING VALVE DETAIL  
N.T.S.

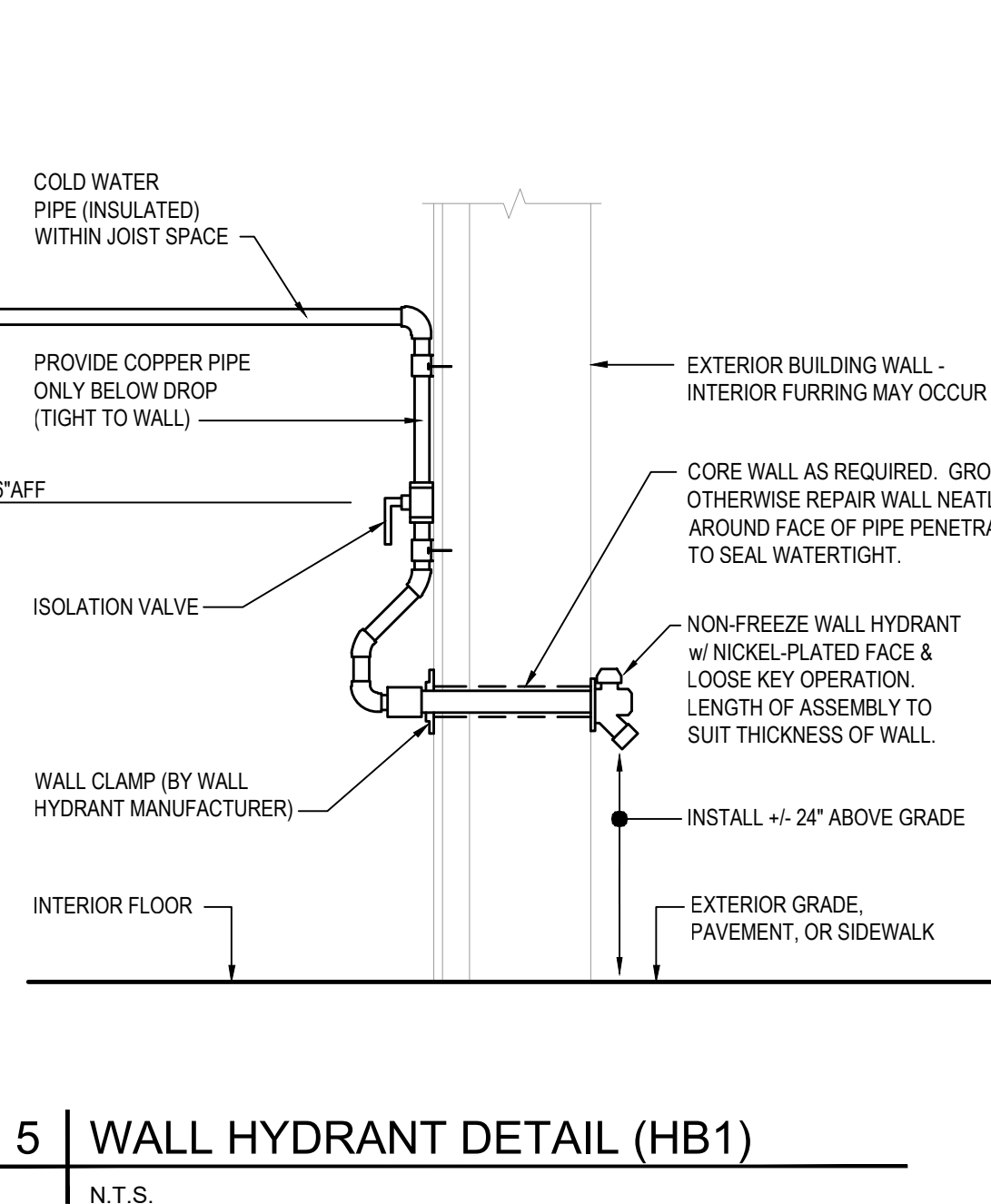
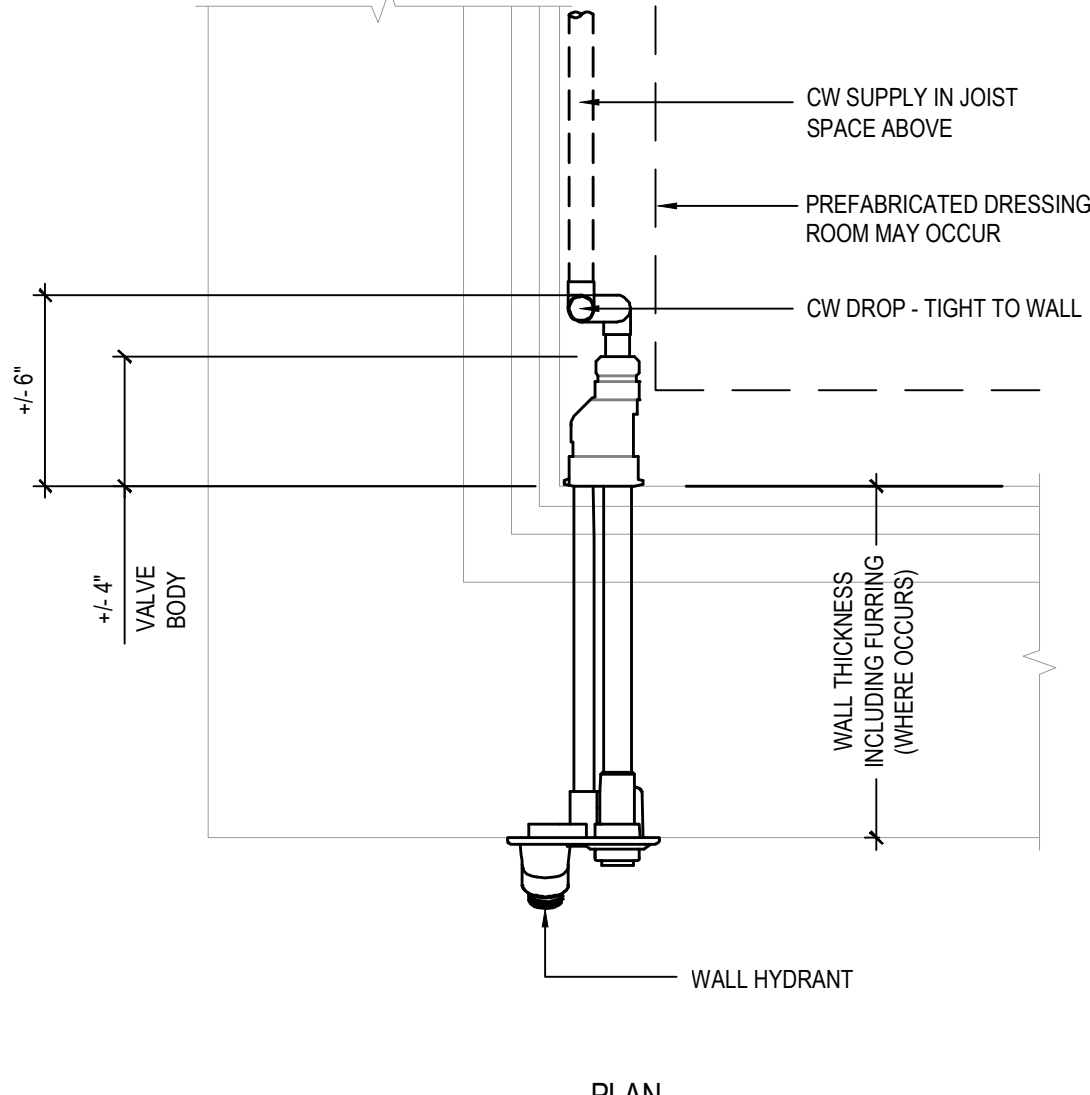


NOTE:  
PROVIDE FIBERGLASS INSULATION w/ ALL SERVICE JACKET w/ VAPOR BARRIER ON ALL COLD/HOT WATER PIPING & CONDENSATE DRAIN PIPE. REFER TO SPECIFICATIONS FOR ADDITIONAL INFORMATION. INSTALL ALL ITEMS PER SPECIFICATIONS & MANUFACTURERS INSTRUCTIONS. MAINTAIN VAPOR BARRIER ON COLD PIPING BY MEANS OF SEALANT & TAPE. FLAME SPREAD & SMOKE DEVELOPED INDEXES SHALL NOT EXCEED 25/50. SEAL EXPOSED ENDS OF FIBERGLASS INSULATION w/ ADHESIVE MASTIC.

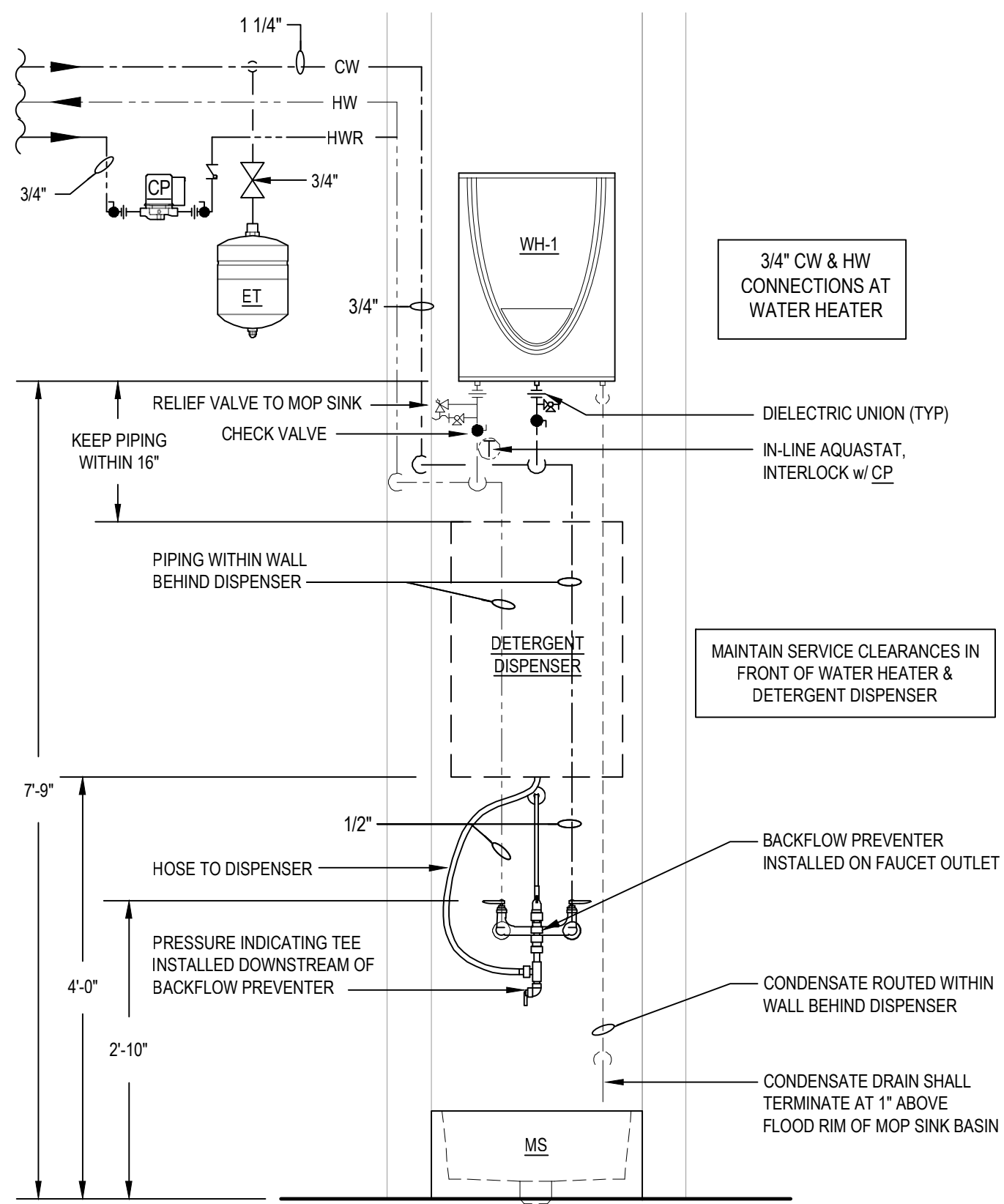
11 | PIPE INSULATION DETAIL  
N.T.S.



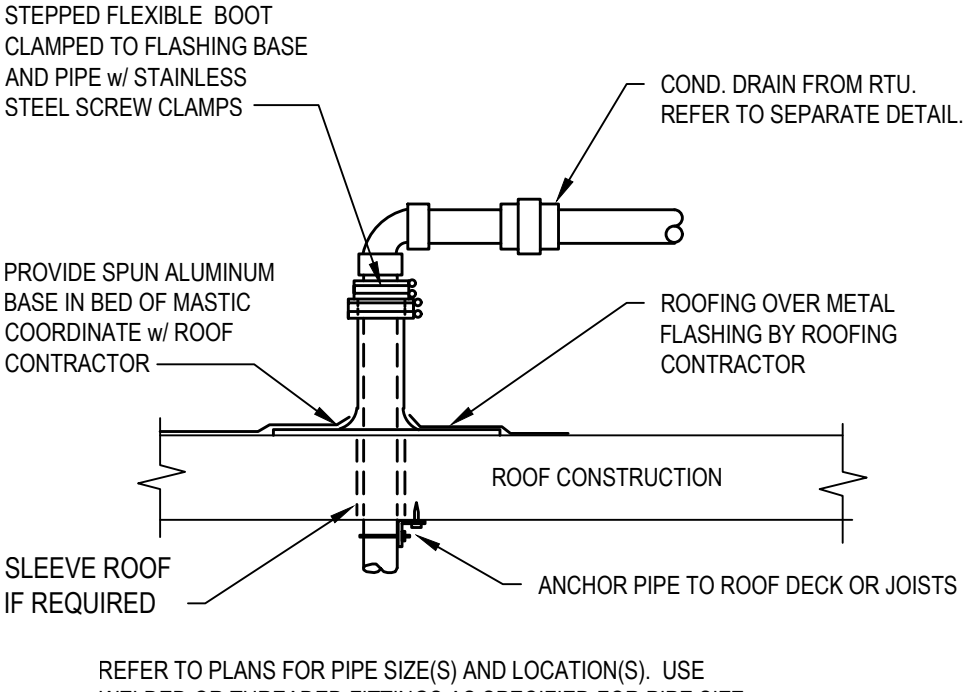
7 | LIVE GOODS CENTER HOSE REEL & SERVICE PIPING DETAIL  
N.T.S.



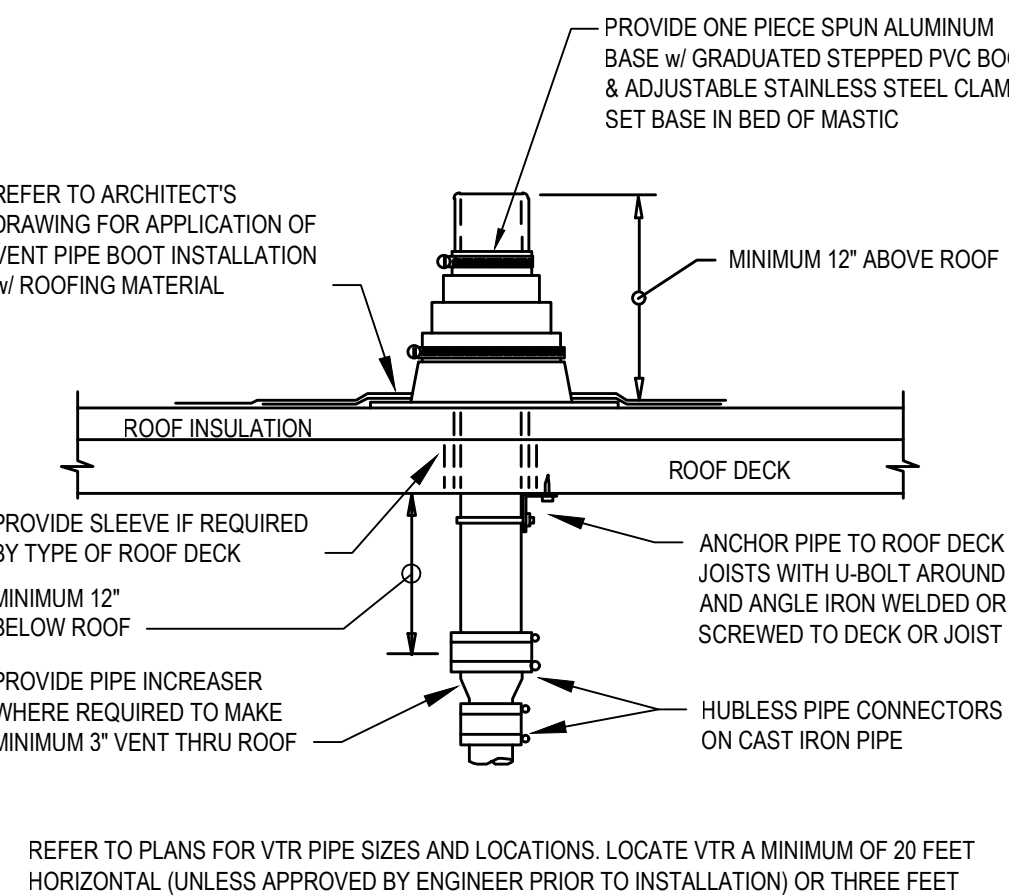
5 | WALL HYDRANT DETAIL (HB1)  
N.T.S.



17 | WATER HEATER & MOP SINK DETAIL  
3/4"=1'-0"



13 | ROOF PENETRATION DETAIL  
N.T.S.



9 | VENT THRU ROOF (VTR) DETAIL  
N.T.S.

PLUMBING LEGEND			
PIPING TO BE REMOVED			
SANITARY DRAIN	---	SAN	---
CONDENSATE DRAIN	---	CD	---
VENT PIPING	---	VT	---
STORM DRAIN	---	ST	---
COLD WATER	---	CW	---
HOT WATER	---	HW	---
HOT WATER RETURN	---	HWR	---
SPRINKLER PIPING	---	SP	---
SHUT OFF VALVE	---	SV	---
CHECK VALVE	---	CV	---
BALANCING VALVE	---	BV	---
PIPE UNION	---	---	---
ABBREVIATIONS			
ABOVE FINISHED FLOOR	AFF	GALLONS PER MINUTE	GPM
CONDENSATE DRAIN	CD	HOSE BIBB	HB
CONNECT TO EXISTING	CTE	INDIRECT WASTE	IW
DOWNSPOUT	DS	NOT TO SCALE	NTS
DRAINAGE FIXTURE UNIT	DFU	ROOF DRAIN	RD
FLOOR CLEANOUT	FCO	ROOFTOP UNIT	RTU
FLOOR FIXTURE	FD	TRAP PRIMER	TP
FLOOR SINK	FS	VENT THRU ROOF	VTR
GALLONS PER FLUSH	GPF	WATER HEATER	WH
GALLONS PER HOUR	GPH		

PLUMBING FIXTURE SCHEDULE	
MARK	DESCRIPTION
BS	BREAKROOM SINK (SINGLE BOWL, S.S., GOOSENECK) SINK & FAUCET SHALL BE FURNISHED BY TRACTOR SUPPLY & INSTALLED BY CONTRACTOR. 20 GA. STAINLESS STEEL DEEP BOWL, SELF RIM w/ 3-HOLE REAR DECK. LEVER HANDLE FAUCET (1.8GPM) w/ GOOSENECK SPOUT, POLISHED CHROME FINISH. MCGUIRE #8912 P-TRAP & (2) #2165-CC SUPPLY w/ STOPS. PROVIDE TRUEBRO HAND-LAN-GUARD INSULATION KIT #1020W w/ ACCESSORY #1050W. REFER TO ARCHITECTURAL DRAWINGS FOR ADDITIONAL INFORMATION.
CP	CIRCULATOR: TACO #006B, INLINE CARTRIDGE CIRCULATOR, 0-11.5 GPM @ 10' TDH, 115V/100/52A, 3250 RPM, 1/40 HP. WIRE TO WALL SWITCH AT 72" A.F.F.
EWC	ELECTRIC WATER COOLER / BOTTLE FILLER (ACCESSIBLE, MOTION SENSOR, DUAL-HEIGHT); MURDOCK #A172108F-LUG-BF12-BCD w/ INFRARED SENSOR CONTROL, BOTTLE FILLER & PUSH BUTTON FOUNTAIN CONTROLS. 8 GPH, 115V/1060A. PROVIDE MCGUIRE #8912 P-TRAP & #165-CC SUPPLY w/ STOP. INSTALL PER MANUFACTURERS REQUIREMENTS & ACCESSIBILITY GUIDELINES. COORDINATE w/ ELECTRICAL CONTRACTOR TO LOCATE RECEPTACLE BEHIND WATER COOLER CABINET. REFER TO ARCHITECTURAL DRAWINGS FOR ADDITIONAL INFORMATION.
ET	THERMAL EXPANSION TANK: AMTROL THERM-X-TROL #ST-5 (OR EQUAL), 200°F MAXIMUM OPERATING TEMPERATURE, 150 PSIG MAXIMUM WORKING PRESSURE.
FD-1	FLOOR DRAIN: J.R. SMITH #2005Y-A-P050-PB, ROUND TOP, POLISHED BRONZE STRAINER, CAST IRON BODY/FLASHING COLLAR & TRAP PRIMER CONNECTION. OUTLET SIZE AS SCHEDULED. MOUNT FLUSH w/ CONCRETE FLOOR.
FD-2	FLOOR DRAIN: J.R. SMITH #2005Y-A-PB-8, ROUND TOP, POLISHED BRONZE STRAINER, CAST IRON BODY/FLASHING COLLAR & TRAP PRIMER CONNECTION. FURNISH w/ SEDIMENT BUCKET. OUTLET SIZE AS SCHEDULED. MOUNT FLUSH w/ CONCRETE FLOOR.
FS	FLOOR SINK: ZURN #FS12-6-PV3-Y-14, 14"x14" PVC FLOOR SINK w/ 3" PVC HUB CONNECTION, DOME STRAINER, SEDIMENT BUCKET & HALF GRATE. MOUNT FLUSH w/ CONCRETE FLOOR.
HB1	WALL HYDRANT (NON-FREEZE, KEVED HANDLE): WOODFORD MODEL 69-BR, 3/4", BRASS FINISH, NIDEL MODEL 3414A VACUUM BREAKER. PROVIDE LOOSE TEE KEY.
HB2	HOSE BIBB: WOODFORD MODEL 24-BR, 3/4", BRASS FINISH, NIDEL MODEL 3414F VACUUM BREAKER.
HR	HOSE REEL: WOODFORD MODEL 24-BR, 3/4", BRASS FINISH, NIDEL MODEL 3414F VACUUM BREAKER.
LAV	LAVATORY (ACCESSIBLE, WALL MOUNTED, MOTION ACTIVATED FAUCET): KOHLER KINGSTON #K-2005, VITREOUS CHINA LAVATORY w/ ZURN AQUASENSE #26915-X, BATTERY POWERED FAUCET, POLISHED CHROME FINISH. KOHLER #K-7129-A DRAIN, KOHLER #K-8998 P-TRAP, & KOHLER #K-23725 CAST IRON CLEANER. PROVIDE ZURN ZW3870XLT THERMAL MIXING VALVE FOR 110°F HOT WATER MAX. COORDINATE w/ MANUFACTURER FOR ADDITIONAL ACCESSORIES. INSTALL PER MANUFACTURERS REQUIREMENTS & ACCESSIBILITY GUIDELINES. REFER TO ARCHITECTURAL DRAWINGS FOR ADDITIONAL INFORMATION.
MS	MOP SINK: MUSTEE BSW 24"x24" FIBERGLASS MOP SERVICE BASIN w/ #30 401 EXTRUDED BUMPER GUARD, CHICAGO #897-RCF CHROME PLATED SPOUT w/ VACUUM BREAKER, 3/4" HOSE THREAD OUTLET, PAIL HOOK, WALL SUPPORT, INTEGRAL STOPS, #369 2-3/8" METAL LEVER HANDLES & 36" LENGTH OF THREADED HOSE. PROVIDE T&S BRASS #B-4977 DUAL CHECK PRESSURE VACUUM BREAKER & DRAIN #B-4 PRESSURE INDICATING TEE ON FAUCET OUTLET FOR HOSE CONNECTION TO DETERGENT DISPENSER. VACUUM BREAKER TO BE INSTALLED UPSTREAM OF PRESSURE INDICATING TEE.
TP	TRAP PRIMER: JOSAM #88250 AUTOMATIC TRAP PRIMER, MOUNTED INSIDE WALL CAVITY UNDER LAVATORY w/ 1/2" COPPER LINE FROM TRAP PRIMER TO ADJACENT FLOOR DRAIN. PROVIDE 8"x8" ACCESS PANEL - PAINT TO MATCH WALL. TRAP SEALS SHALL MEET THE REQUIREMENTS OF ASSE 1072 & SHALL BE MADE OF CHEMICALLY RESISTANT ELASTOMER. ALTERNATE: INLINE FLOOR DRAIN TRAP SEAL MAY BE USED IN LIEU OF TRAP PRIMERS PENDING AHJ APPROVAL.
UR	URINAL (ACCESSIBLE, WALL MOUNTED, MOTION ACTIVATED): KOHLER #K-4991-ET - VITREOUS CHINA, TOP SPUD, 0.125 GPF. PROVIDE ZURN #ZTR6203-QRT SENSOR OPERATED URINAL FLUSH VALVE, BATTERY OPERATED w/ MECHANICAL OVERRIDE BUTTON. COORDINATE w/ MANUFACTURER FOR ADDITIONAL ACCESSORIES. INSTALL PER MANUFACTURERS REQUIREMENTS & ACCESSIBILITY GUIDELINES. REFER TO ARCHITECTURAL DRAWINGS FOR ADDITIONAL INFORMATION.
WASH TUB ADA	PET WASH TUB (ACCESSIBLE) TUB, FAUCET & INTERCEPTOR PROVIDED BY TSC & INSTALLED BY CONTRACTOR. STAINLESS STEEL WALK-THRU TUB, FAUCET PACKAGE w/ 72" STAINLESS STEEL HOSE w/ SPRAYER & WALL MOUNTING HOOK. PROVIDE ENDURA IN-LINE DRAIN STRAINER #93243AW BELOW TUB IN PLACE OF P-TRAP. INSTALL w/ ACCESS CAP TOWARDS FRONT OF TUB. INSTALL SMARTWAY HAIR INTERCEPTOR IN PLACE OF REGULAR STRAINER BASKETS. COORDINATE LEFT HAND / RIGHT HAND CONFIGURATION AS SHOWN ON DRAWINGS & w/ TSC. REFER TO ARCHITECTURAL DRAWINGS FOR ADDITIONAL ACCESSIBILITY REQUIREMENTS.
WASH TUB	PET WASH TUB: TUB, FAUCET & INTERCEPTOR PROVIDED BY TSC & INSTALLED BY CONTRACTOR. STAINLESS STEEL WALK-THRU TUB, FAUCET PACKAGE w/ 72" STAINLESS STEEL HOSE w/ SPRAYER & WALL MOUNTING HOOK. PROVIDE ENDURA IN-LINE DRAIN STRAINER #93243AW BELOW TUB IN PLACE OF P-TRAP. INSTALL w/ ACCESS CAP TOWARDS FRONT OF TUB. INSTALL SMARTWAY HAIR INTERCEPTOR IN PLACE OF REGULAR STRAINER BASKETS. COORDINATE LEFT HAND / RIGHT HAND CONFIGURATION AS SHOWN ON DRAWINGS & w/ TSC.
WC-ADA	WATER CLOSET (ACCESSIBLE, FLOOR MOUNTED, PRESSURE ASSISTED FLUSH TANK, MOTION ACTIVATED): KOHLER HIGHLINE #K-3519, 12" ROUGH-IN, 1.0 GPF, LOW CONSUMPTION, VITREOUS CHINA, ELONGATED BOWL, FLUSH TANK WATER CLOSET. PROVIDE KOHLER #K-5888 ELONGATED TOILET SEAT w/ #K-5420 BOLT CAPS. COORDINATE ORIENTATION OF TANK w/ RESTROOM LAYOUT TO COMPLY WITH ACCESSIBILITY REQUIREMENTS PRIOR TO ORDERING. PROVIDE SLOAN FLUSHMATE PRESSURE ASSIST SYSTEM w/ INTELLIFLUSH #K-200101 WALL MOUNTED MOTION SENSOR (CHROME TRIM) & OVERRIDE BUTTON (IN PLACE OF LEVER). INTELLIFLUSH SYSTEM MUST BE ORDERED SEPARATELY FROM FLUSHMATE. CONTACT LORI FELTMATE FOR ORDERING INFORMATION. PH(248)446-6109; LORI.FELTMATE@FLUSHMATE.COM
WC	WATER CLOSET (FLOOR MOUNTED, PRESSURE ASSISTED FLUSH TANK, MOTION ACTIVATED): KOHLER BELLWORTH #K-3531, 12" ROUGH-IN, 1.0 GPF, LOW CONSUMPTION, VITREOUS CHINA, ELONGATED BOWL, FLUSH TANK WATER CLOSET. PROVIDE KOHLER #K-5888 ELONGATED TOILET SEAT w/ #K-5420 BOLT CAPS. COORDINATE ORIENTATION OF TANK w/ RESTROOM LAYOUT TO MATCH WC-ADA PRIOR TO ORDERING. PROVIDE SLOAN FLUSHMATE PRESSURE ASSIST SYSTEM w/ INTELLIFLUSH #K-200101 WALL MOUNTED MOTION SENSOR (CHROME TRIM) & OVERRIDE BUTTON (IN PLACE OF LEVER). INTELLIFLUSH SYSTEM MUST BE ORDERED SEPARATELY FROM FLUSHMATE. CONTACT LORI FELTMATE FOR ORDERING INFORMATION. PH(248)446-6109; LORI.FELTMATE@FLUSHMATE.COM
WH-1	WATER HEATER (GAS TANKLESS, 96% EFFICIENCY): A.O. SMITH #540H (OR EQUAL) INTERIOR WALL MOUNTED, GAS, 13,000-199,000 BTUH, 0.26-9.8 GAL/MIN. CAPACITY, 120V/100A. PROVIDE ISOLATION VALVE KIT, CONDENSATE NEUTRALIZER KIT & CONCENTRIC VENT KIT. SHALL CONFORM TO IECC 701.504 & ASHRAE 90.1. SET TO 120°F OUTLET TEMP.
WH-2	WATER HEATER (ELECTRIC TANKLESS): HUBBELL #HX42-6T4 (OR EQUAL) RATED AT 42 KW, 480V/3051A. SET TO 120° OUTLET TEMP.
WHA	WATER HAMMER ARRESTER: JOSAM #75001 THROUGH 75008, SIZE AS RECOMMENDED BY MANUFACTURER.