



# COLUMBIA COUNTY PRODUCT APPROVAL SPECIFICATION SHEET

As required by Florida Statute 553.842 and Florida Administrative Code 9B-72, please provide the information and approval numbers on the building components listed below if they will be utilized on the construction project for which you are applying for a building permit. We recommend you contact your local product supplier should you not know the product approval number for any of the applicable listed products. Statewide approved products are listed online at [www.floridabuilding.org](http://www.floridabuilding.org).

Category/Subcategory	Manufacturer	Product Description	Approval Number(s)
<b>1. EXTERIOR DOORS</b>			
<b>A. SWINGING</b>			
<b>B. SLIDING</b>	Wincore	Sliding Glass Door	16812.4
<b>C. SECTIONAL/ROLL UP</b>			
<b>D. OTHER</b>			
<b>2. WINDOWS</b>			
<b>A. SINGLE/DOUBLE HUNG</b>	Wincore	Double Hung Window	15819.8
<b>B. HORIZONTAL SLIDER</b>			
<b>C. CASEMENT</b>			
<b>D. FIXED</b>			
<b>E. MULLION</b>			
<b>F. SKYLIGHTS</b>			
<b>G. OTHER</b>			
<b>3. PANEL WALL</b>			
<b>A. SIDING</b>			
<b>B. SOFFITS</b>			
<b>C. STOREFRONTS</b>			
<b>D. GLASS BLOCK</b>			
<b>E. OTHER</b>			
<b>4. ROOFING PRODUCTS</b>			
<b>A. ASPHALT SHINGLES</b>			
<b>B. NON-STRUCT METAL</b>			
<b>C. ROOFING TILES</b>			
<b>D. SINGLE PLY ROOF</b>			
<b>E. OTHER</b>			
<b>5. STRUCT COMPONENTS</b>			
<b>A. WOOD CONNECTORS</b>			
<b>B. WOOD ANCHORS</b>			
<b>C. TRUSS PLATES</b>			
<b>D. INSULATION FORMS</b>			
<b>E. LINTELS</b>			
<b>F. OTHERS</b>			
<b>6. NEW EXTERIOR</b>			
<b>A. ENVELOPE PRODUCTS</b>			

The products listed below did not demonstrate product approval at plan review. I understand that at the time of inspection of these products, the following information must be available to the inspector on the jobsite; **(1)** copy of the product approval **(2)** performance characteristics which the product was tested and certified to comply with **(3)** copy of the applicable manufacturer's installation requirements. Further, I understand these products may have to be removed if approval cannot be demonstrated during inspection.

10/28/2023

APPLICANT SIGNATURE

DATE



**Product Approval**  
USER: Public User

[Product Approval Menu](#) > [Product or Application Search](#) > **Application List**

► OFFICE OF THE  
SECRETARY

## Search Criteria

[Refine Search](#)

Code Version	2020	FL#	15819.8
Application Type	ALL	Product Manufacturer	ALL
Category	ALL	Subcategory	ALL
Application Status	ALL	Compliance Method	ALL
Quality Assurance Entity	ALL	Quality Assurance Entity Contract Expired	ALL
Product Model, Number or Name	ALL	Product Description	ALL
Approved for use in HVHZ	ALL	Approved for use outside HVHZ	ALL
Impact Resistant	ALL	Design Pressure	ALL
Other	ALL		

## Search Results - Applications

FL#	Type	Manufacturer	Validated By	Status
<a href="#">FL15819-R11</a> <a href="#">History</a>	Revision	Wincore Window Company, LLC <b>FL#:</b> FL15819.8 <b>Model:</b> h. 7700 / 9000 Series Vinyl Double Hung Window <b>Description:</b> Extruded PVC Double Hung Window with "Non-Impact" Insulated Glass <b>Category:</b> Windows <b>Subcategory:</b> Double Hung	Ryan J. King, P.E. (813) 767-6555	Approved

\*Approved by DBPR. Approvals by DBPR shall be reviewed and ratified by the POC and/or the Commission if necessary.

[Contact Us](#) :: [2601 Blair Stone Road, Tallahassee FL 32399](#) Phone: 850-487-1824

The State of Florida is an AA/EEO employer. [Copyright 2007-2013 State of Florida](#). :: [Privacy Statement](#) :: [Accessibility Statement](#) :: [Refund Statement](#)

Under Florida law, email addresses are public records. If you do not want your e-mail address released in response to a public-records request, do not send electronic mail to this entity. Instead, contact the office by phone or by traditional mail. If you have any questions, please contact 850.487.1395. \*Pursuant to Section 455.275(1), Florida Statutes, effective October 1, 2012, licensees licensed under Chapter 455, F.S. must provide the Department with an email address if they have one. The emails provided may be used for official communication with the licensee. However email addresses are public record. If you do not wish to supply a personal address, please provide the Department with an email address which can be made available to the public. To determine if you are a licensee under Chapter 455, F.S., please click [here](#).

### Product Approval Accepts:





**Product Approval**  
USER: Public User

[Product Approval Menu](#) > [Product or Application Search](#) > [Application List](#) > **Application Detail**

► OFFICE OF THE  
SECRETARY

FL #	FL15819-R11
Application Type	Revision
Code Version	2020
Application Status	Approved
Comments	
Archived	<input type="checkbox"/>
Product Manufacturer	Wincore Window Company, LLC
Address/Phone/Email	250 Staunton Avenue Parkersburg, WV 26104 (304) 485-7460 Ext 228 dgeorge@wincorewindows.com
Authorized Signature	Vivian Wright rickw@rwbldgconsultants.com
Technical Representative	Mike Reed
Address/Phone/Email	250 Staunton Turnpike Parkersburg, WV 26104 (304) 485-7460 Ext 228 mreed@wincorewindows.com
Quality Assurance Representative	Mike Reed
Address/Phone/Email	250 Staunton Turnpike Parkersburg, WV 26104 (304) 485-7460 Ext 228 mreed@wincorewindows.com
Category	Windows
Subcategory	Double Hung
Compliance Method	Evaluation Report from a Florida Registered Architect or a Licensed Florida Professional Engineer <input type="checkbox"/> Evaluation Report - Hardcopy Received
Florida Engineer or Architect Name who developed the Evaluation Report	Lyndon F. Schmidt, P.E.
Florida License	PE-43409
Quality Assurance Entity	National Accreditation and Management Institute
Quality Assurance Contract Expiration Date	12/31/2021
Validated By	Ryan J. King, P.E. <input checked="" type="checkbox"/> Validation Checklist - Hardcopy Received
Certificate of Independence	<a href="#">FL15819_R11_COI_(c) Certificate of Independence.pdf</a>

Referenced Standard and Year (of Standard)

<b>Standard</b>	<b>Year</b>
AAMA/WDMA/CSA101/I.S.2/A440	2008
AAMA/WDMA/CSA101/I.S.2/A440	2005
AAMA/WDMA/CSA101/I.S.2/A440	2011
ASTM E 1300	2004
ASTM E1886	2005
ASTM E1886	2013
ASTM E1996	2014

Equivalence of Product Standards  
Certified By

Florida Licensed Professional Engineer or Architect  
[FL15819\\_R11\\_Equiv\\_of\\_Standards.pdf](#)

Sections from the Code

Product Approval Method

Method 1 Option D

Date Submitted

07/07/2020

Date Validated

07/13/2020

Date Pending FBC Approval

07/20/2020

Date Approved

10/13/2020

### Summary of Products

FL #	Model, Number or Name	Description
15819.1	a. 8400 Series Vinyl Double Hung Window	Extruded PVC Double Hung Window with "Non-Impact" Insulated Glass
<b>Limits of Use</b> <b>Approved for use in HVHZ:</b> No <b>Approved for use outside HVHZ:</b> Yes <b>Impact Resistant:</b> No <b>Design Pressure:</b> N/A <b>Other:</b> See INST 15819.1 for Design Pressure Ratings, any additional use limitations, installation instructions and product particulars.		<b>Installation Instructions</b> <a href="#">FL15819_R11_II (d) Inst 15819.1.pdf</a> Verified By: Lyndon F. Schmidt, P.E. 43409 Created by Independent Third Party: Yes <b>Evaluation Reports</b> <a href="#">FL15819_R11_AE (d) Eval 15819.1.pdf</a> Created by Independent Third Party: Yes
15819.2	b. 8800 Series Vinyl Double Hung Window	Extruded PVC Double Hung Window with "Impact" Insulated Glass
<b>Limits of Use</b> <b>Approved for use in HVHZ:</b> No <b>Approved for use outside HVHZ:</b> Yes <b>Impact Resistant:</b> Yes <b>Design Pressure:</b> N/A <b>Other:</b> See INST 15819.2 for Design Pressure Ratings, any additional use limitations, installation instructions and product particulars.		<b>Installation Instructions</b> <a href="#">FL15819_R11_II (d) Inst 15819.2.pdf</a> Verified By: Lyndon F. Schmidt, P.E. 43409 Created by Independent Third Party: Yes <b>Evaluation Reports</b> <a href="#">FL15819_R11_AE (d) Eval 15819.2.pdf</a> Created by Independent Third Party: Yes
15819.3	c. 8800 Series "HVHZ" Vinyl Double Hung Window	Extruded PVC Double Hung Window with "Impact" Insulated Glass
<b>Limits of Use</b> <b>Approved for use in HVHZ:</b> Yes <b>Approved for use outside HVHZ:</b> Yes <b>Impact Resistant:</b> Yes <b>Design Pressure:</b> N/A <b>Other:</b> See INST 15819.3 for Design Pressure Ratings, any additional use limitations, installation instructions and product particulars.		<b>Installation Instructions</b> <a href="#">FL15819_R11_II (d) Inst 15819.3.pdf</a> Verified By: Lyndon F. Schmidt, P.E. 43409 Created by Independent Third Party: Yes <b>Evaluation Reports</b> <a href="#">FL15819_R11_AE (d) Eval 15819.3.pdf</a> Created by Independent Third Party: Yes
15819.4	d. 400 Series Vinyl Double Hung Window	Extruded PVC Double Hung Window with Nailing Fin - "Non-Impact" Insulated Glass
<b>Limits of Use</b> <b>Approved for use in HVHZ:</b> No <b>Approved for use outside HVHZ:</b> Yes <b>Impact Resistant:</b> No <b>Design Pressure:</b> N/A <b>Other:</b> See INST 15819.4 for Design Pressure Ratings, any additional use limitations, installation instructions and product particulars.		<b>Installation Instructions</b> <a href="#">FL15819_R11_II (d) Inst 15819.4.pdf</a> Verified By: Lyndon F. Schmidt, P.E. 43409 Created by Independent Third Party: Yes <b>Evaluation Reports</b> <a href="#">FL15819_R11_AE (d) Eval 15819.4.pdf</a> Created by Independent Third Party: Yes
15819.5	e. 500 Series Vinyl Double Hung Window	Extruded PVC Double Hung Window with Nailing Fin and Integral "J" Channel - "Non-Impact" Insulated Glass
<b>Limits of Use</b> <b>Approved for use in HVHZ:</b> No <b>Approved for use outside HVHZ:</b> Yes <b>Impact Resistant:</b> No <b>Design Pressure:</b> N/A		<b>Installation Instructions</b> <a href="#">FL15819_R11_II (d) Inst 15819.5.pdf</a> Verified By: Lyndon F. Schmidt, P.E. 43409 Created by Independent Third Party: Yes <b>Evaluation Reports</b>

<b>Other:</b> See INST 15819.5 for Design Pressure Ratings, any additional use limitations, installation instructions and product particulars.		<a href="#">FL15819_R11_AE_(d)_Eval_15819.5.pdf</a> Created by Independent Third Party: Yes
15819.6	f. 5400 / 5400S Series Vinyl Double Hung Window	Extruded PVC Double Hung Window with "Non-Impact" Insulated Glass (Double Strength Glass with Reinforced Sash)
<b>Limits of Use</b> <b>Approved for use in HVHZ:</b> No <b>Approved for use outside HVHZ:</b> Yes <b>Impact Resistant:</b> No <b>Design Pressure:</b> N/A <b>Other:</b> See INST 15819.6 for Design Pressure Ratings, any additional use limitations, installation instructions and product particulars.		<b>Installation Instructions</b> <a href="#">FL15819_R11_II_(d)_Inst_15819.6.pdf</a> Verified By: Lyndon F. Schmidt, P.E. 43409 Created by Independent Third Party: Yes <b>Evaluation Reports</b> <a href="#">FL15819_R11_AE_(d)_Eval_15819.6.pdf</a> Created by Independent Third Party: Yes
15819.7	g. 5400 / 5400S Series Vinyl Double Hung Window	Extruded PVC Double Hung Window with "Non-Impact" Insulated Glass (Single Strength Glass with non-reinforced Sash)
<b>Limits of Use</b> <b>Approved for use in HVHZ:</b> No <b>Approved for use outside HVHZ:</b> Yes <b>Impact Resistant:</b> No <b>Design Pressure:</b> N/A <b>Other:</b> See INST 15819.7 for Design Pressure Ratings, any additional use limitations, installation instructions and product particulars.		<b>Installation Instructions</b> <a href="#">FL15819_R11_II_(d)_Inst_15819.7.pdf</a> Verified By: Lyndon F. Schmidt, P.E. 43409 Created by Independent Third Party: Yes <b>Evaluation Reports</b> <a href="#">FL15819_R11_AE_(d)_Eval_15819.7.pdf</a> Created by Independent Third Party: Yes
15819.8	h. 7700 / 9000 Series Vinyl Double Hung Window	Extruded PVC Double Hung Window with "Non-Impact" Insulated Glass
<b>Limits of Use</b> <b>Approved for use in HVHZ:</b> No <b>Approved for use outside HVHZ:</b> Yes <b>Impact Resistant:</b> No <b>Design Pressure:</b> N/A <b>Other:</b> See INST 15819.8 for Design Pressure Ratings, any additional use limitations, installation instructions and product particulars.		<b>Installation Instructions</b> <a href="#">FL15819_R11_II_(d)_Inst_15819.8.pdf</a> Verified By: Lyndon F. Schmidt, P.E. 43409 Created by Independent Third Party: Yes <b>Evaluation Reports</b> <a href="#">FL15819_R11_AE_(d)_Eval_15819.8.pdf</a> Created by Independent Third Party: Yes
15819.9	i. 7700 / 9000 Series Vinyl Double Hung Window	Extruded PVC Double Hung Window (Reinforced Sash) with "Non-Impact" Insulated Glass
<b>Limits of Use</b> <b>Approved for use in HVHZ:</b> No <b>Approved for use outside HVHZ:</b> Yes <b>Impact Resistant:</b> No <b>Design Pressure:</b> N/A <b>Other:</b> See INST 15819.9 for Design Pressure Ratings, any additional use limitations, installation instructions and product particulars.		<b>Installation Instructions</b> <a href="#">FL15819_R11_II_(d)_Inst_15819.9.pdf</a> Verified By: Lyndon F. Schmidt, P.E. 43409 Created by Independent Third Party: Yes <b>Evaluation Reports</b> <a href="#">FL15819_R11_AE_(d)_Eval_15819.9.pdf</a> Created by Independent Third Party: Yes

[Back](#)
[Next](#)

[Contact Us](#) :: 2601 Blair Stone Road, Tallahassee FL 32399 Phone: 850-487-1824

The State of Florida is an AA/EEO employer. [Copyright 2007-2013 State of Florida.](#) :: [Privacy Statement](#) :: [Accessibility Statement](#) :: [Refund Statement](#)

Under Florida law, email addresses are public records. If you do not want your e-mail address released in response to a public-records request, do not send electronic mail to this entity. Instead, contact the office by phone or by traditional mail. If you have any questions, please contact 850.487.1395. \*Pursuant to Section 455.275(1), Florida Statutes, effective October 1, 2012, licensees licensed under Chapter 455, F.S. must provide the Department with an email address if they have one. The emails provided may be used for official communication with the licensee. However email addresses are public record. If you do not wish to supply a personal address, please provide the Department with an email address which can be made available to the public. To determine if you are a licensee under Chapter 455, F.S., please click [here](#).

**Product Approval Accepts:**





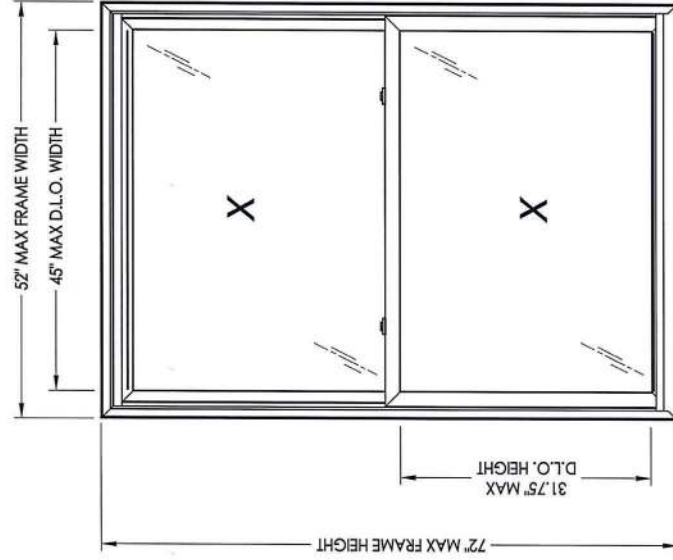
**7700 / 9900 Series**  
**Vinyl Double Hung**  
**Window**  
**"NON-IMPACT"**

**GENERAL NOTES**

1. This product has been evaluated and is in compliance with the 7th Edition (2020) Florida Building Code (FBC) structural requirements excluding the "High Velocity Hurricane Zone" (HVHZ).
2. Product anchors shall be as listed and spaced as shown on details. Anchor embedment to base material shall be beyond wall dressing or stucco.
3. When used in areas requiring wind borne debris protection this product is required to be protected with an impact resistant covering that complies with FBC Sections 1609.1.2 & R301.2.1.2.
4. For 2x stud framing construction, anchoring of these units shall be the same as that shown for 2x buck masonry construction.
5. Site conditions that deviate from the details of this drawing require further engineering analysis by a licensed engineer or registered architect.

**TABLE OF CONTENTS**

SHEET#	DESCRIPTION
1	Typical elevations, design pressures and general notes
2	Horizontal cross sections
3	Vertical cross sections
4	Buck and frame anchoring
5	Bill of materials, components & glazing details



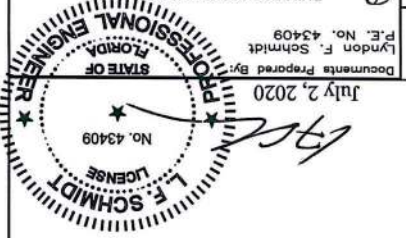
MAX. FRAME DIMENSION	MAX. D.L.O. DIMENSION	GLASS TYPE	DESIGN PRESSURE (PSF)	
			POSITIVE	NEGATIVE
32.0" X 58.0"	25.0" X 24.75"	G1, G2	+55.0	-55.0
52.0" X 40.0"	45.0" X 15.75"	G1, G2	+45.0	-45.0
48.0" X 42.0"	41.0" X 16.75"	G1, G2	+45.0	-45.0
44.0" X 46.0"	37.0" X 18.75"	G1, G2	+45.0	-45.0
40.0" X 52.0"	33.0" X 21.75"	G1, G2	+45.0	-45.0
36.0" X 56.0"	29.0" X 23.75"	G1, G2	+45.0	-45.0
32.0" X 64.0"	25.0" X 27.75"	G1, G2	+45.0	-45.0
52.0" X 44.0"	45.0" X 17.75"	G1, G2	+40.0	-40.0
48.0" X 48.0"	41.0" X 19.75"	G1, G2	+40.0	-40.0
44.0" X 52.0"	37.0" X 21.75"	G1, G2	+40.0	-40.0
40.0" X 58.0"	33.0" X 24.75"	G1, G2	+40.0	-40.0

MAX. FRAME DIMENSION	MAX. D.L.O. DIMENSION	GLASS TYPE	DESIGN PRESSURE (PSF)	
			POSITIVE	NEGATIVE
36.0" X 64.0"	29.0" X 27.75"	G1, G2	+40.0	-40.0
32.0" X 70.0"	25.0" X 30.75"	G1, G2	+40.0	-40.0
52.0" X 50.0"	45.0" X 20.75"	G1, G2	+35.0	-35.0
48.0" X 54.0"	41.0" X 22.75"	G1, G2	+35.0	-35.0
44.0" X 60.0"	37.0" X 25.75"	G1, G2	+35.0	-35.0
40.0" X 66.0"	33.0" X 28.75"	G1, G2	+35.0	-35.0
36.0" X 72.0"	29.0" X 31.75"	G1, G2	+35.0	-35.0
52.0" X 40.0"	45.0" X 25.75"	G1, G2	+30.0	-30.0
48.0" X 64.0"	41.0" X 27.75"	G1, G2	+30.0	-30.0
44.0" X 70.0"	37.0" X 30.75"	G1, G2	+30.0	-30.0
40.0" X 72.0"	33.0" X 31.75"	G1, G2	+30.0	-30.0
52.0" X 72.0"	45.0" X 31.75"	G1, G2	+25.0	-25.0

REVISIONS	
NO.	DATE
1	8/25/14
2	1/27/15
3	5/10/16
4	6/01/17
5	7/02/20
DATE: 6/23/14	
SCALE: N.T.S.	
DWG. BY: JK	
CHK. BY: LFS	
DRAWING NO.: FL-15819.8	
SHEET 1 OF 5	

PRODUCT: 7700 / 9900 SERIES Vinyl Double Hung Window	PART OR ASSEMBLY: TYPICAL ELEVATION, DESIGN PRESSURES & GENERAL NOTES
BY: JK	

July 2, 2020  
Documents Prepared By: Lynden F. Schmidt  
P.E. No. 43409  
BUILDING CONSULTANTS, INC.  
P.O. Box 230, Vero Beach, FL 33595  
Phone No.: 813.659.9197  
FBPE Registry No. 9813

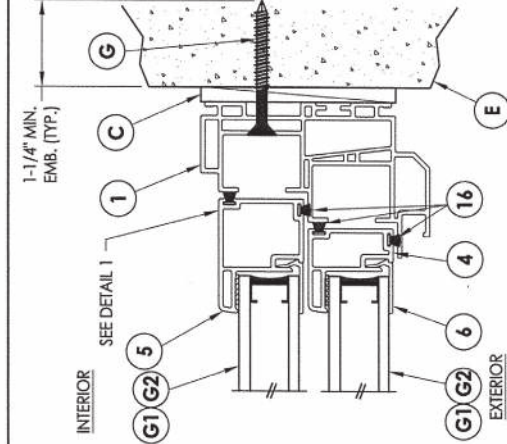


NO. DATE 1 8/25/14 2 1/27/15 3 5/10/16 4 6/01/17 5 7/02/20	REVISE SERIES NO. UPDATE TO 5TH ED. (2014) FBC REVISE INSTALLATION SCREWS UPDATE TO 6TH ED. (2017) FBC UPDATE TO 7TH ED. (2020) FBC	REVISIONS BY JK JK	DATE: 6/23/14 SCALE: N.T.S. DWG. BY: JK CHK. BY: LFS DRAWING NO.: FL-15819.8 SHEET 2 of 5
BUILDING CONSULTANTS, INC. P.O. Box 230, Vero Beach, FL 33595 Phone No.: 813.659.9197 FBP Registry No. 9813			

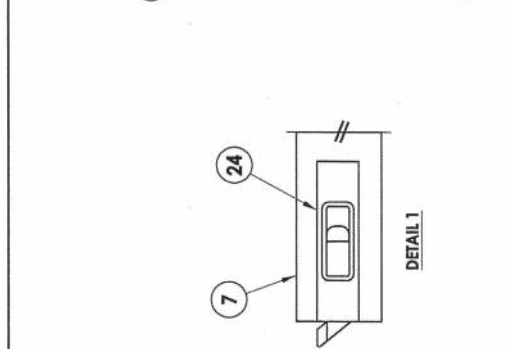


July 2, 2020  
 Documents Prepared By: Lyndon F. Schmidt  
 P.E. No. 43409  
 BUILDING CONSULTANTS, INC.  
 R.W.

PRODUCT: 7700 / 9900 SERIES  
 PART OR ASSEMBLY: Vinyl Double Hung Window  
 CROSS SECTIONS: HORIZONTAL



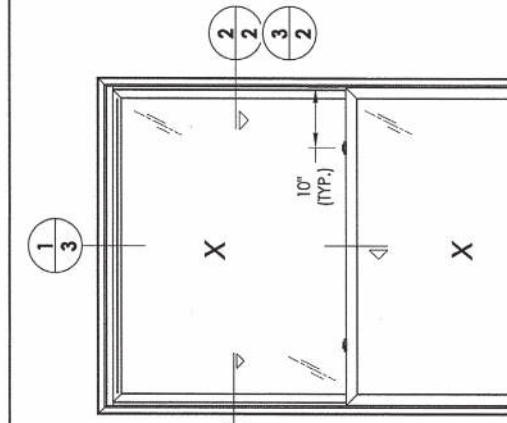
2 HORIZONTAL CROSS SECTION  
 2 Shown direct to masonry



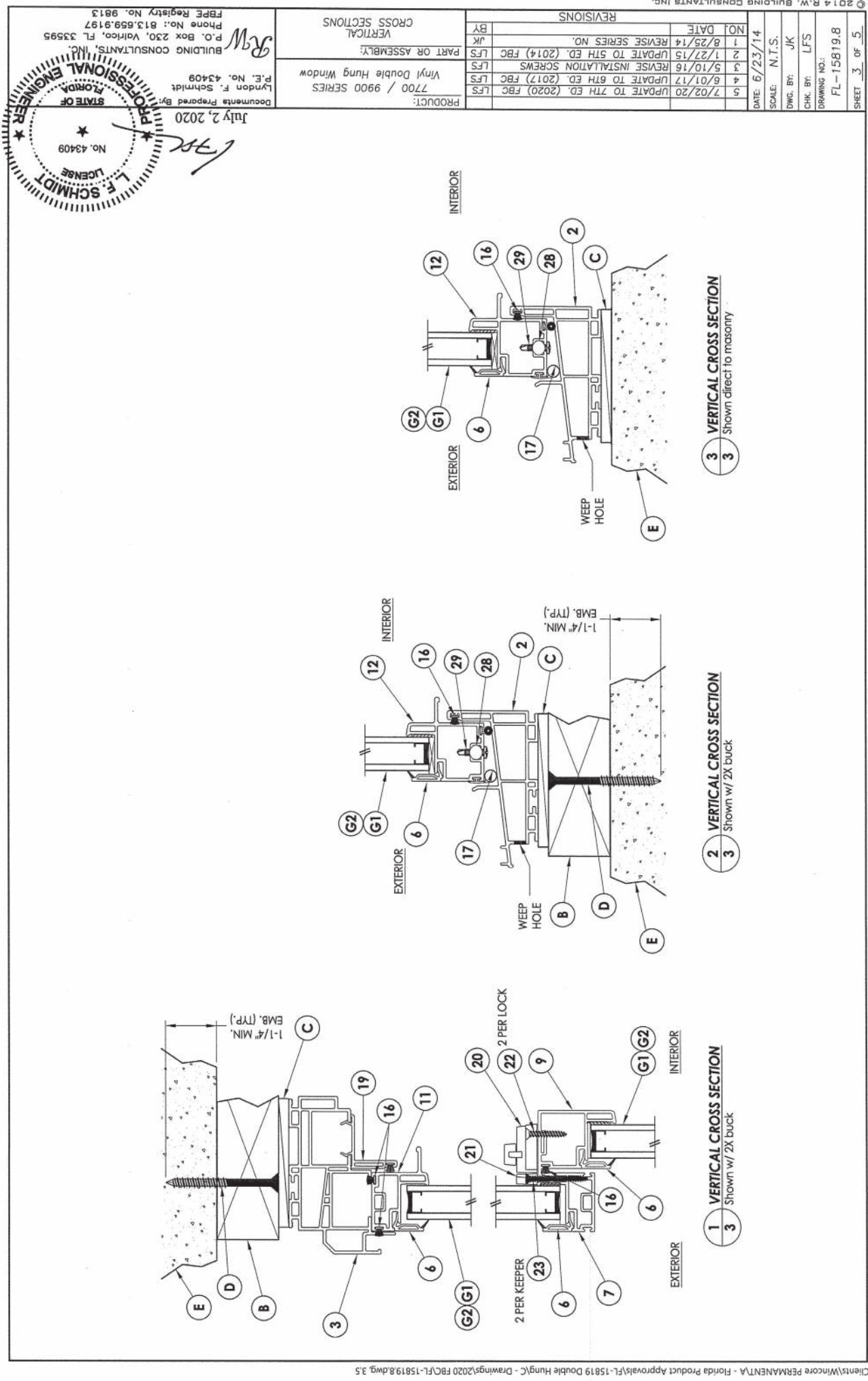
3 HORIZONTAL CROSS SECTION  
 2 Shown w/ 1X buck



1 HORIZONTAL CROSS SECTION  
 2 Shown w/ 2X buck







REVISIONS NO. DATE 1 8/25/14 REVISE SERIES NO. 2 1/27/15 UPDATE TO 5TH ED. (2014) FBC LFS 3 5/10/16 REVISE INSTALLATION SCREWS LFS 4 6/01/17 UPDATE TO 6TH ED. (2017) FBC LFS 5 7/02/20 UPDATE TO 7TH ED. (2020) FBC LFS		PART OR ASSEMBLY: CROSS SECTIONS VERTICAL Vinyl Double Hung Window 7700 / 9900 SERIES	
DATE: 6/23/14 SCALE: N.T.S. DWG. BY: JK CHK. BY: LFS DRAWING NO.: FL-15819.8 SHEET 3 OF 5		PRODUCT: 7700 / 9900 SERIES Vinyl Double Hung Window P.E. No. 43409 Lyndon F. Schmidt Documents Prepared By:	

BUILDING CONSULTANTS, INC.  
 P.O. Box 230, Vero Beach, FL 33595  
 Phone No.: 813.659.9197  
 FBPE Registry No. 9813  
 L.F. SCHMIDT  
 LICENSE  
 No. 43409  
 STATE OF FLORIDA  
 PROFESSIONAL ENGINEER  
 July 2, 2020



## BUCK ANCHORING

**FRAME ANCHORING**  
2X Buck

**FRAME ANCHORING**  
1X Buck  
Direct to masonry

ANCHOR TYPE	ANCHOR SIZE	MIN. EMBEDMENT	MIN. CLEARANCE TO MASONRY EDGE	MIN. CLEARANCE TO ADJACENT ANCHOR
ITW TAPCON®	1/4"	1-1/4"	2"	4"
ELCO HITRACON®	1/4"	1-1/4"	1"	4"

**WOOD SCREW INSTALLATION NOTES:**

- WOOD SCREW INSTALLATION NOTES:**
1. Maintain a minimum 5/8" edge distance, 1" end distance, & 1" o.c. spacing of wood screws to prevent the splitting of wood.

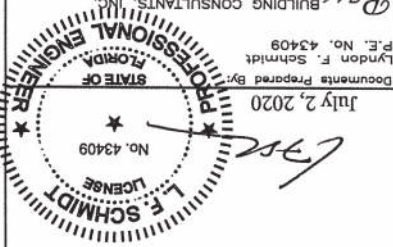
REVIEWS		DATE		DATE: 6/23/14		SCALE: N.T.S.	
BY	JK	NO.	DATE	DATE	DATE	DATE	DATE
LFS	LFS	1	8/23/14	8/23/14	8/23/14	8/23/14	8/23/14
LFS	LFS	2	12/15	12/15	12/15	12/15	12/15
LFS	LFS	3	10/16	10/16	10/16	10/16	10/16
LFS	LFS	4	6/01/17	6/01/17	6/01/17	6/01/17	6/01/17
LFS	LFS	5	7/02/20	7/02/20	7/02/20	7/02/20	7/02/20

PRODUCT: 7700 / 9900 SERIES  
Vinyl Double Hung Window

---

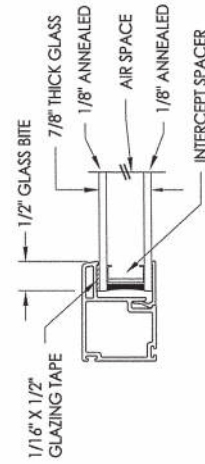
PART OR ASSEMBLY: BUCK AND  
FRAME ANCHORING

Documents Prepared By: London F. Schmidt  
P.E. No. 43409  
PROFESSIONAL ENGINEER  
STATE OF FLORIDA  
JRW  
P.O. Box 230, Vero Beach, FL 33595  
BUILDING CONSULTANTS, INC.  
Phone No.: 813.659.8197  
FBPE Registry No. 9813

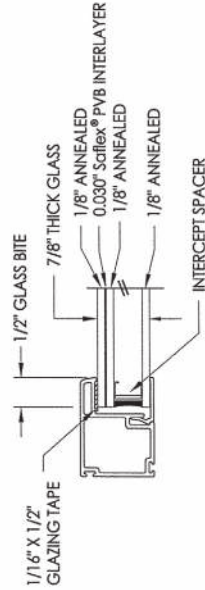


BILL OF MATERIALS		
ITEM #	DESCRIPTION	MATERIAL
A	1X BUCK SG >= 0.42	WOOD
B	2X BUCK SG >= 0.42	WOOD
C	1/4" MAX. SHIM SPACE	-
D	1/4" X 2-3/4" PH ELCO OR ITW CONCRETE SCREW	STEEL
E	MASONRY - 3,000 PSI MIN. CONCRETE CONFORMING TO ACI 301 OR HOLLOW BLOCK CONFORMING TO ASTM C90	CONCRETE
F	#8 X 2" PAN HEAD/TRUSS HEAD WOOD SCREW (1-3/8" MIN. EMBEDMENT)	STEEL
G	1/4" X 2-1/4" PH ELCO OR ITW CONCRETE SCREW	STEEL
1	FRAME JAMB* (DH 7701)	PVC
2	SILL* (DH 7703)	PVC
3	FRAME HEAD* (DH 7701)	PVC
4	UPPER SASH STILE* (SE 3035)	PVC
5	LOWER SASH STILE* (SE 3045)	PVC
6	GLAZING BEAD*	PVC
7	KEEPER RAIL UPPER SASH* (SE 3034)	PVC
9	LOCK RAIL LOWER SASH* (SE 3046)	PVC
11	TOP RAIL UPPER SASH* (SE 3037)	PVC
12	BOTTOM RAIL LOWER SASH* (SE 3047)	PVC
16	WEATHERSTRIP ULTRA FAB .270 PILE - 270 - 1875B	-
17	WEATHERSTRIP SILBULB (AMESBURY 32690)	-
19	HEAD ADAPTER* (DH 3005)	PVC
20	LOCK 8513 / 8845 LAWRENCE	PVC
21	KEEPER 2700 - 214 LAWRENCE	PVC
22	#8 X 1" PHF (VINYL LOCK SCREWS)	STEEL
23	#6 X 1-1/2" PHF (VINYL LOCK SCREWS)	STEEL
24	TOP SASH TILT LATCH - ASHLAND	PVC
28	PIVOT BAR - CALDWELL	STEEL
29	#8 X 1/2" SELF TAPPING PPH SMS	STEEL

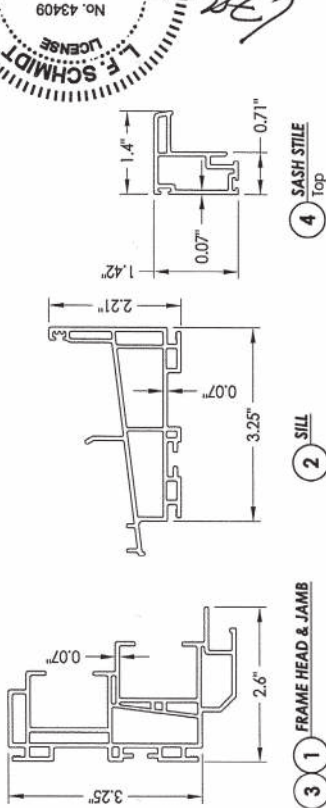
\* THE APPROVED WHITE RIGID PVC EXTERIOR EXTRUSIONS FOR WINDOWS ARE TO BE PRODUCED BY EXTRUDERS LICENSEES IN "AAMA CERTIFICATION PROGRAMS FOR RIGID PVC EXTRUSIONS".



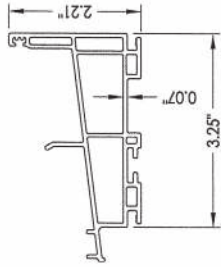
**G1** GLAZING DETAIL  
(See General Note 3, Sheet 1)



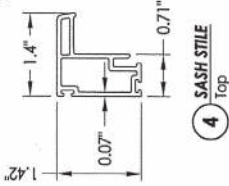
**G2** GLAZING DETAIL  
(See General Note 3, Sheet 1)



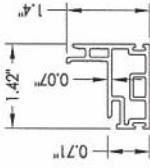
**3** FRAME HEAD & JAMB



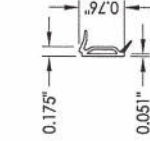
**2** SILL



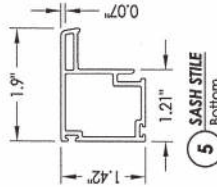
**4** SASH STILE  
Top



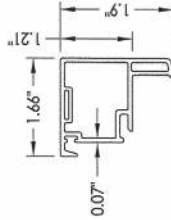
**7** KEEPER RAIL  
Upper Sash



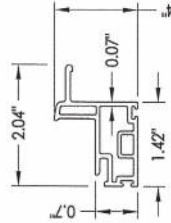
**6** GLAZING BEAD



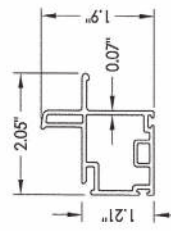
**5** SASH STILE  
Bottom



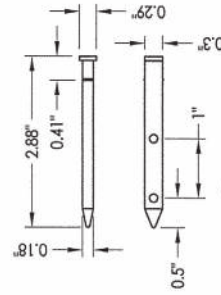
**9** LOCK RAIL  
Lower Sash



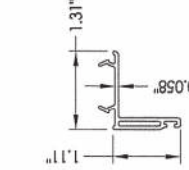
**11** TOP RAIL  
Upper Sash



**12** BOTTOM RAIL  
Lower Sash



**28** PIVOT BAR



**19** HEAD ADAPTER

PRODUCT: 7700 / 9900 SERIES Vinyl Double Hung Window		PART OR ASSEMBLY: COMPONENTS & GLAZING DETAIL	
DATE: 7/02/20	NO. 1	REVISIONS	BY
6/01/17	4	UPDATE TO 6TH ED. (2017) FBC LFS	JFK
5/10/16	3	REVISE INSTALLATION SCREWS	LFS
1/27/15	2	UPDATE TO 5TH ED. (2014) FBC LFS	JFK
8/25/14	1	REVISE SERIES NO.	JFK

July 2, 2020  
**PROFESSIONAL ENGINEER**  
**FLORIDA**  
**L. F. SCHMIDT**  
 No. 43409  
 State of Florida  
 License  
 Documents Prepared By: Lyndon F. Schmidt  
 P.E. No. 43409  
 P.O. Box 230, Vero Beach, FL 33595  
 Phone No.: 813.659.9197  
 FBPE Registry No. 9813  
 BUILDING CONSULTANTS, INC.


[DBPR HOME](#) | [ABOUT DBPR](#) | [DBPR DIVISIONS](#) | [CONTACT DBPR](#)
[BCIS Home](#) | [Log In](#) | [User Registration](#) | [Hot Topics](#) | [Submit Surcharge](#) | [Stats & Facts](#) | [Publications](#) | [Contact Us](#) | [BCIS Site Map](#) | [Links](#) | [Search](#)

**Product Approval**  
 USER: Public User

[Product Approval Menu](#) > [Product or Application Search](#) > **Application List**

 OFFICE OF THE  
 SECRETARY

**Search Criteria**
[Refine Search](#)

Code Version	2020	FL#	16216.4
Application Type	ALL	Product Manufacturer	ALL
Category	ALL	Subcategory	ALL
Application Status	ALL	Compliance Method	ALL
Quality Assurance Entity	ALL	Quality Assurance Entity Contract Expired	ALL
Product Model, Number or Name	ALL	Product Description	ALL
Approved for use in HVHZ	ALL	Approved for use outside HVHZ	ALL
Impact Resistant	ALL	Design Pressure	ALL
Other	ALL		

**Search Results - Applications**

FL#	Type	Manufacturer	Validated By	Status
<a href="#">FL16216-R10</a> <a href="#">History</a>	Revision	Wincore Window Company, LLC <b>FL#:</b> FL16216.4 <b>Model:</b> d. 5400 / 5400S / 7700 / 9900 Series <b>Description:</b> Extruded Vinyl Sliding Patio Door (XO or OX Configuration - Nominal 8'0 x 8'0) <b>Category:</b> Exterior Doors <b>Subcategory:</b> Sliding Exterior Door Assemblies	Ryan J. King, P.E. (813) 767-6555	Approved

\*Approved by DBPR. Approvals by DBPR shall be reviewed and ratified by the POC and/or the Commission if necessary.

[Contact Us](#) :: 2601 Blair Stone Road, Tallahassee FL 32399 Phone: 850-487-1824

 The State of Florida is an AA/EEO employer. [Copyright 2007-2013 State of Florida](#). :: [Privacy Statement](#) :: [Accessibility Statement](#) :: [Refund Statement](#)

Under Florida law, email addresses are public records. If you do not want your e-mail address released in response to a public-records request, do not send electronic mail to this entity. Instead, contact the office by phone or by traditional mail. If you have any questions, please contact 850.487.1395. \*Pursuant to Section 455.275(1), Florida Statutes, effective October 1, 2012, licensees licensed under Chapter 455, F.S. must provide the Department with an email address if they have one. The emails provided may be used for official communication with the licensee. However email addresses are public record. If you do not wish to supply a personal address, please provide the Department with an email address which can be made available to the public. To determine if you are a licensee under Chapter 455, F.S., please click [here](#).

**Product Approval Accepts:**



[DBPR HOME](#) | [ABOUT DBPR](#) | [DBPR DIVISIONS](#) | [CONTACT DBPR](#)
[BCIS Home](#) | [Log In](#) | [User Registration](#) | [Hot Topics](#) | [Submit Surcharge](#) | [Stats & Facts](#) | [Publications](#) | [Contact Us](#) | [BCIS Site Map](#) | [Links](#) | [Search](#)


## Product Approval

USER: Public User

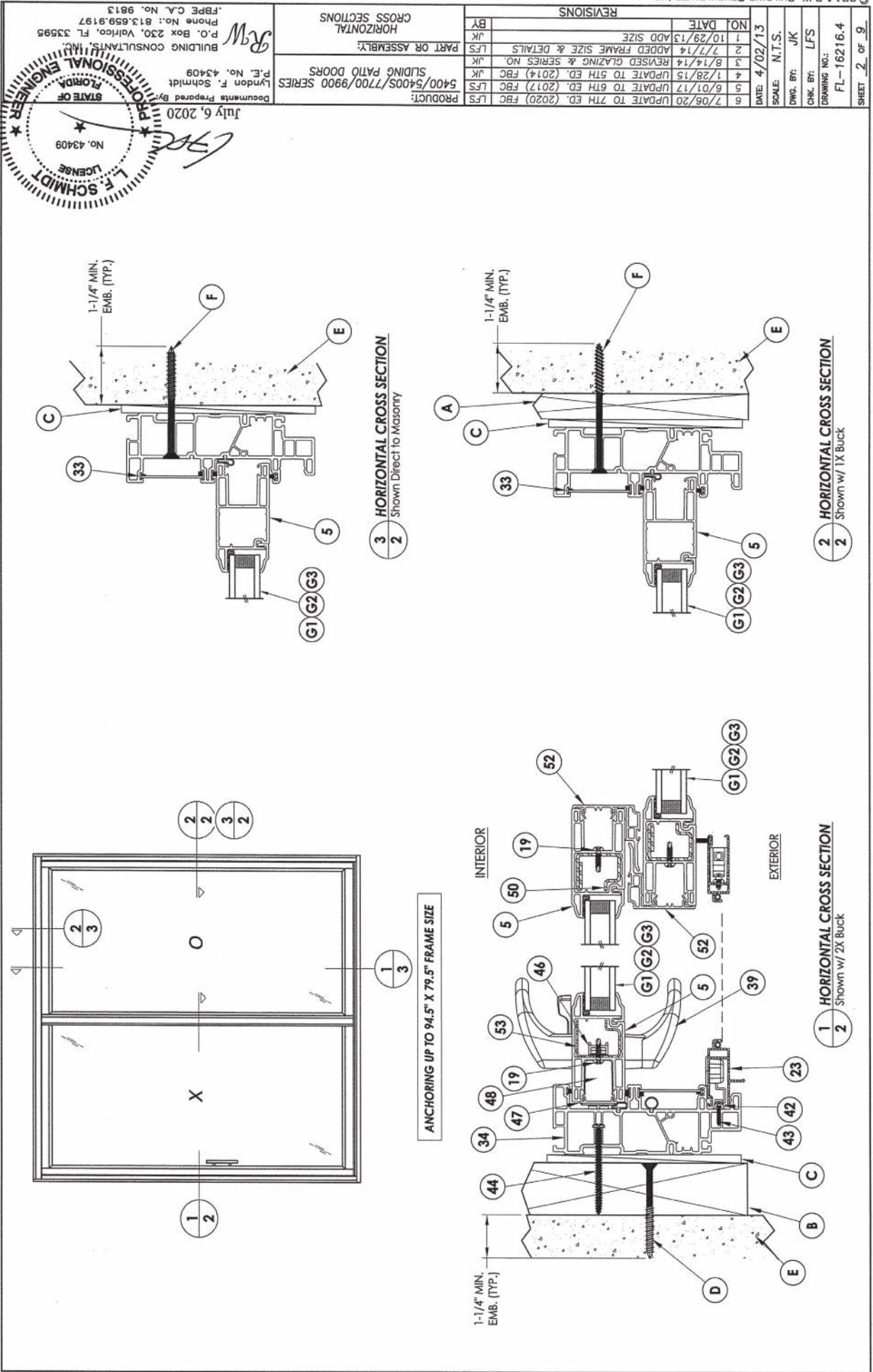
[Product Approval Menu](#) > [Product or Application Search](#) > [Application List](#) > **Application Detail**

### OFFICE OF THE SECRETARY

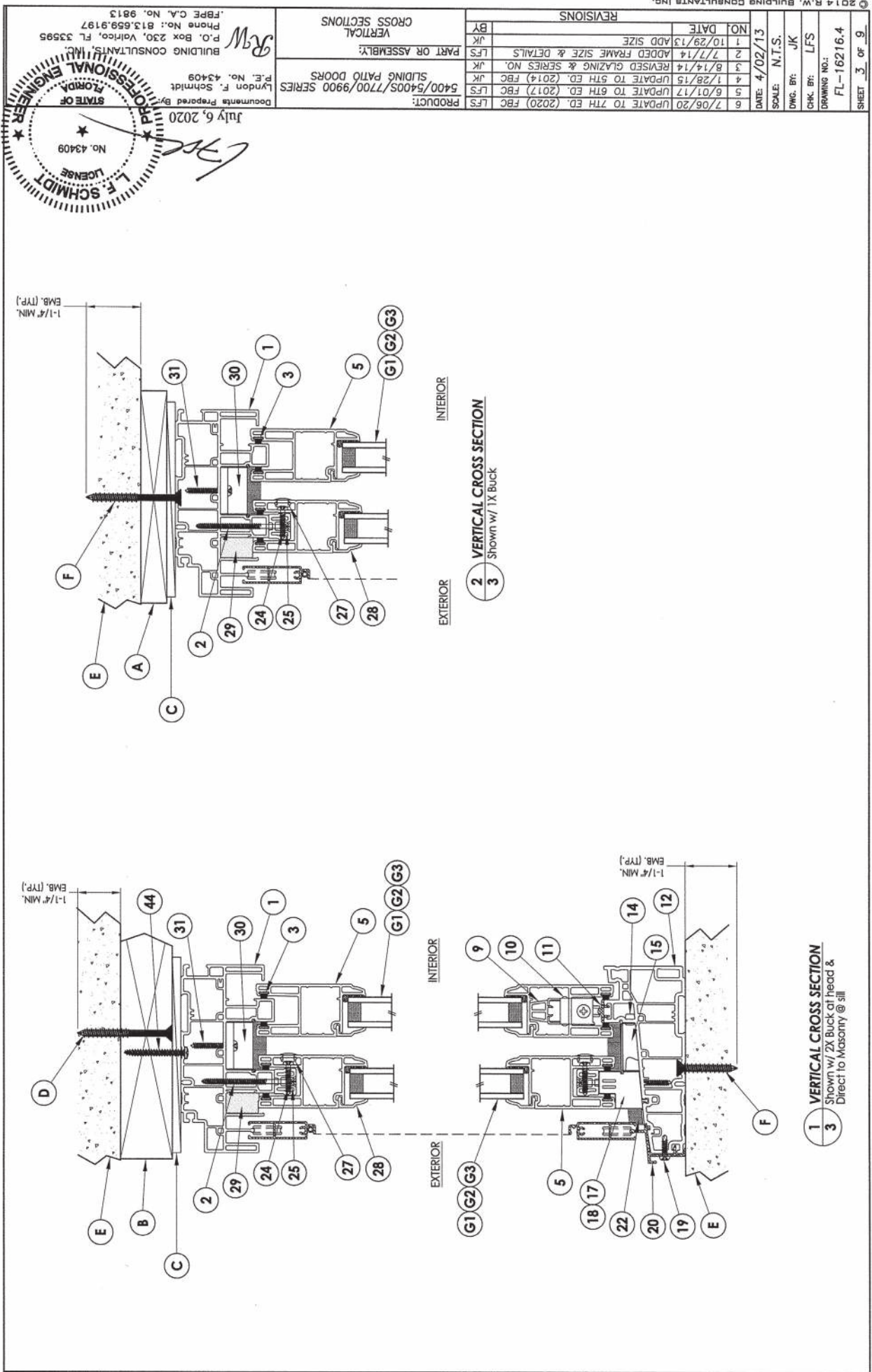
FL #	FL16216-R10																
Application Type	Revision																
Code Version	2020																
Application Status	Approved																
Comments																	
Archived	<input type="checkbox"/>																
Product Manufacturer	Wincore Window Company, LLC																
Address/Phone/Email	250 Staunton Avenue Parkersburg, WV 26104 (304) 485-7460 Ext 228 dgeorge@wincorewindows.com																
Authorized Signature	Vivian Wright rickw@rwbltdgconsultants.com																
Technical Representative																	
Address/Phone/Email																	
Quality Assurance Representative																	
Address/Phone/Email																	
Category	Exterior Doors																
Subcategory	Sliding Exterior Door Assemblies																
Compliance Method	Evaluation Report from a Florida Registered Architect or a Licensed Florida Professional Engineer <input type="checkbox"/> Evaluation Report - Hardcopy Received																
Florida Engineer or Architect Name who developed the Evaluation Report	Lyndon F. Schmidt, P.E.																
Florida License	PE-43409																
Quality Assurance Entity	National Accreditation and Management Institute																
Quality Assurance Contract Expiration Date	12/31/2021																
Validated By	Ryan J. King, P.E. <input checked="" type="checkbox"/> Validation Checklist - Hardcopy Received																
Certificate of Independence	<a href="#">FL16216_R10_COI_(c)_Certificate_of_Independence.pdf</a>																
Referenced Standard and Year (of Standard)	<table border="0"> <thead> <tr> <th><b>Standard</b></th> <th><b>Year</b></th> </tr> </thead> <tbody> <tr> <td>AAMA/WDMA/CSA101/I.S.2/A440</td> <td>2008</td> </tr> <tr> <td>AAMA/WDMA/CSA101/I.S.2/A440</td> <td>2005</td> </tr> <tr> <td>ASTM E1300</td> <td>2004</td> </tr> <tr> <td>ASTM E1886</td> <td>2005</td> </tr> <tr> <td>ASTM E1996</td> <td>2005</td> </tr> <tr> <td>ASTM E1996</td> <td>2009</td> </tr> <tr> <td>TAS 201, 202, 203</td> <td>1994</td> </tr> </tbody> </table>	<b>Standard</b>	<b>Year</b>	AAMA/WDMA/CSA101/I.S.2/A440	2008	AAMA/WDMA/CSA101/I.S.2/A440	2005	ASTM E1300	2004	ASTM E1886	2005	ASTM E1996	2005	ASTM E1996	2009	TAS 201, 202, 203	1994
<b>Standard</b>	<b>Year</b>																
AAMA/WDMA/CSA101/I.S.2/A440	2008																
AAMA/WDMA/CSA101/I.S.2/A440	2005																
ASTM E1300	2004																
ASTM E1886	2005																
ASTM E1996	2005																
ASTM E1996	2009																
TAS 201, 202, 203	1994																
Equivalence of Product Standards Certified By	Florida Licensed Professional Engineer or Architect <a href="#">FL16216_R10_Equiv_of_Standards(c).pdf</a>																

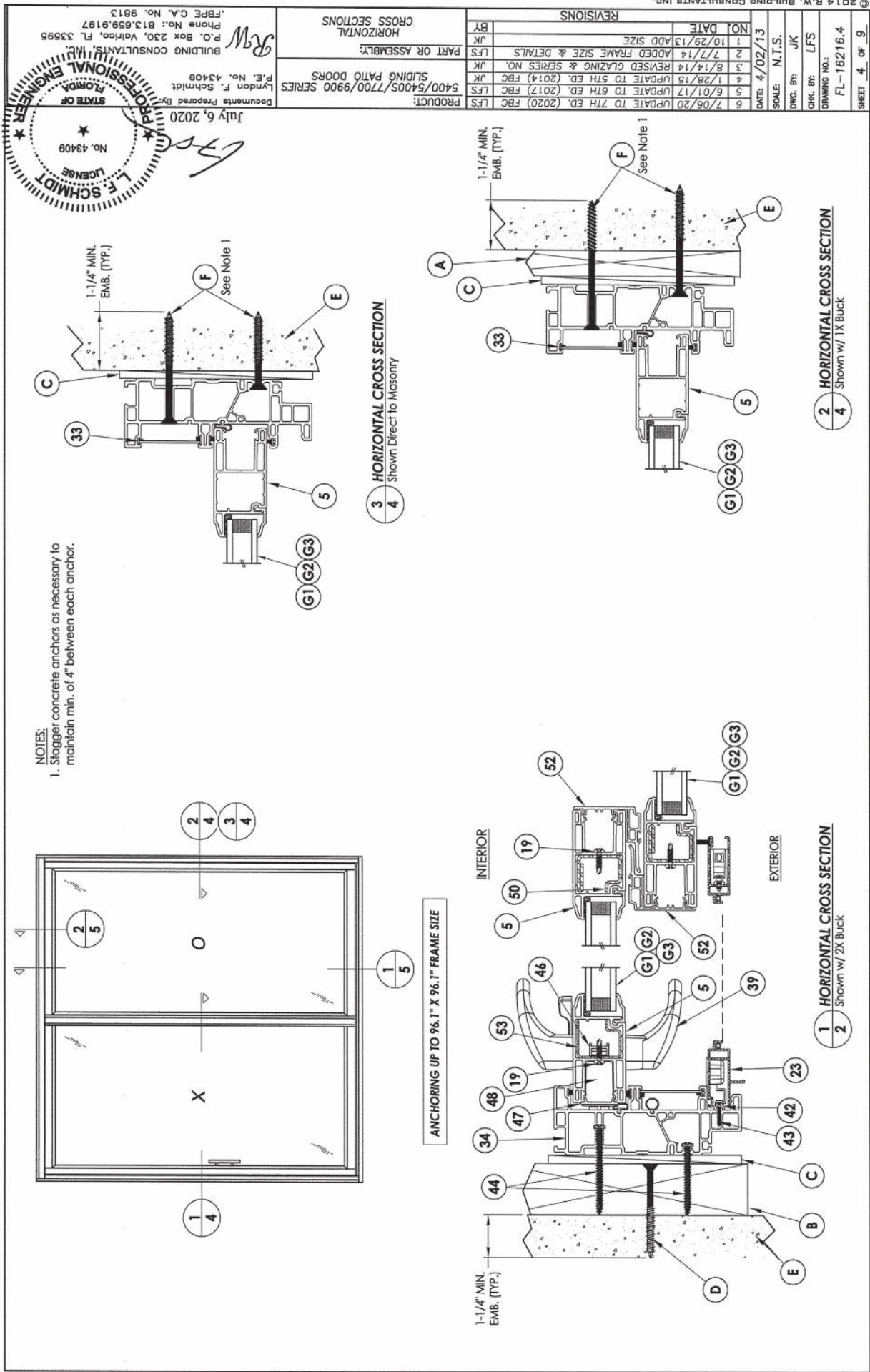


R:\Clients\Wincore PERMANENTA - Florida Product Approvals\FL-16216 Extruded Vinyl Sliding Patio Door\C - Drawings\2020 FBC\FL-16216.dwg, FL-16216.4

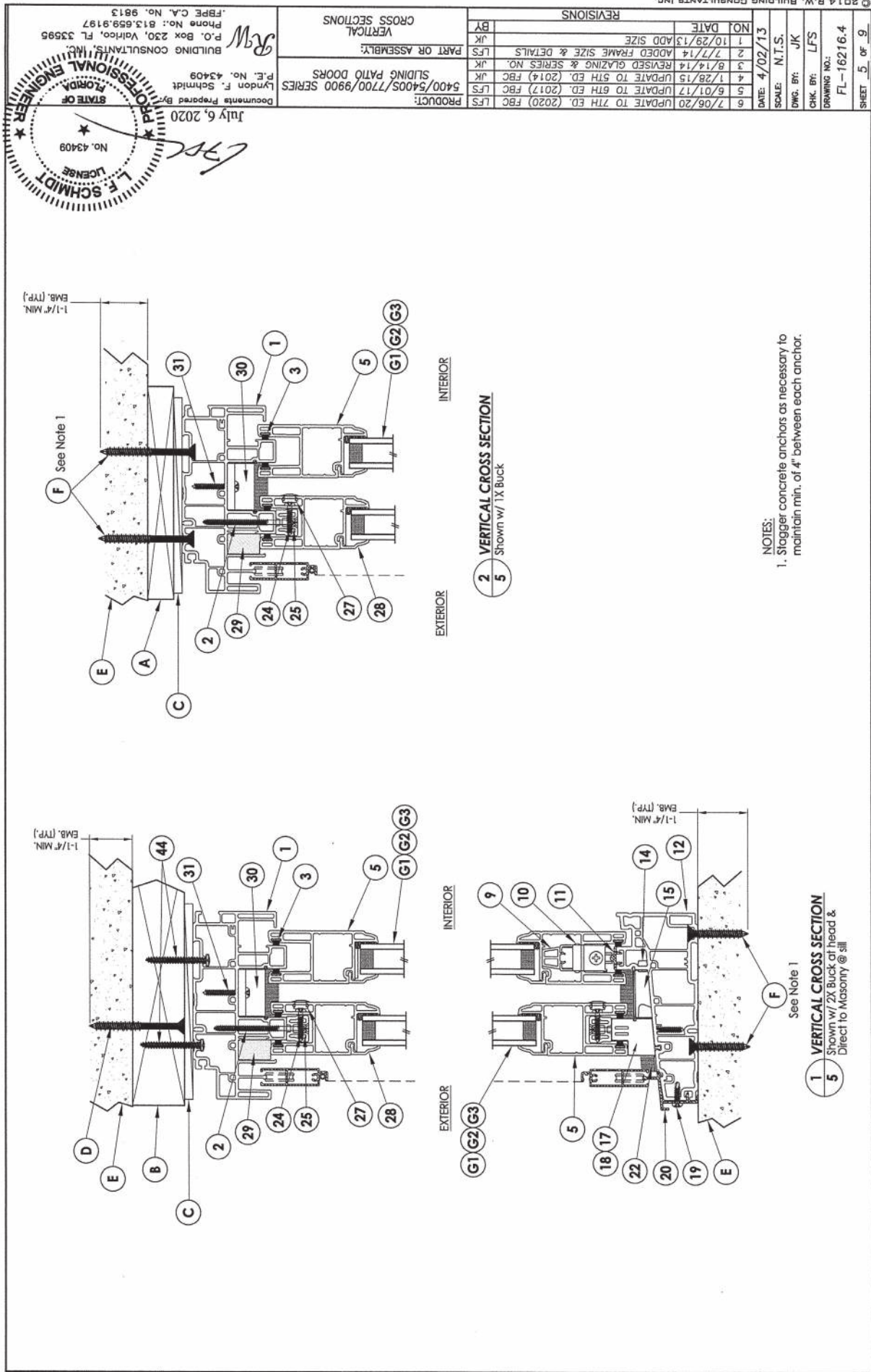


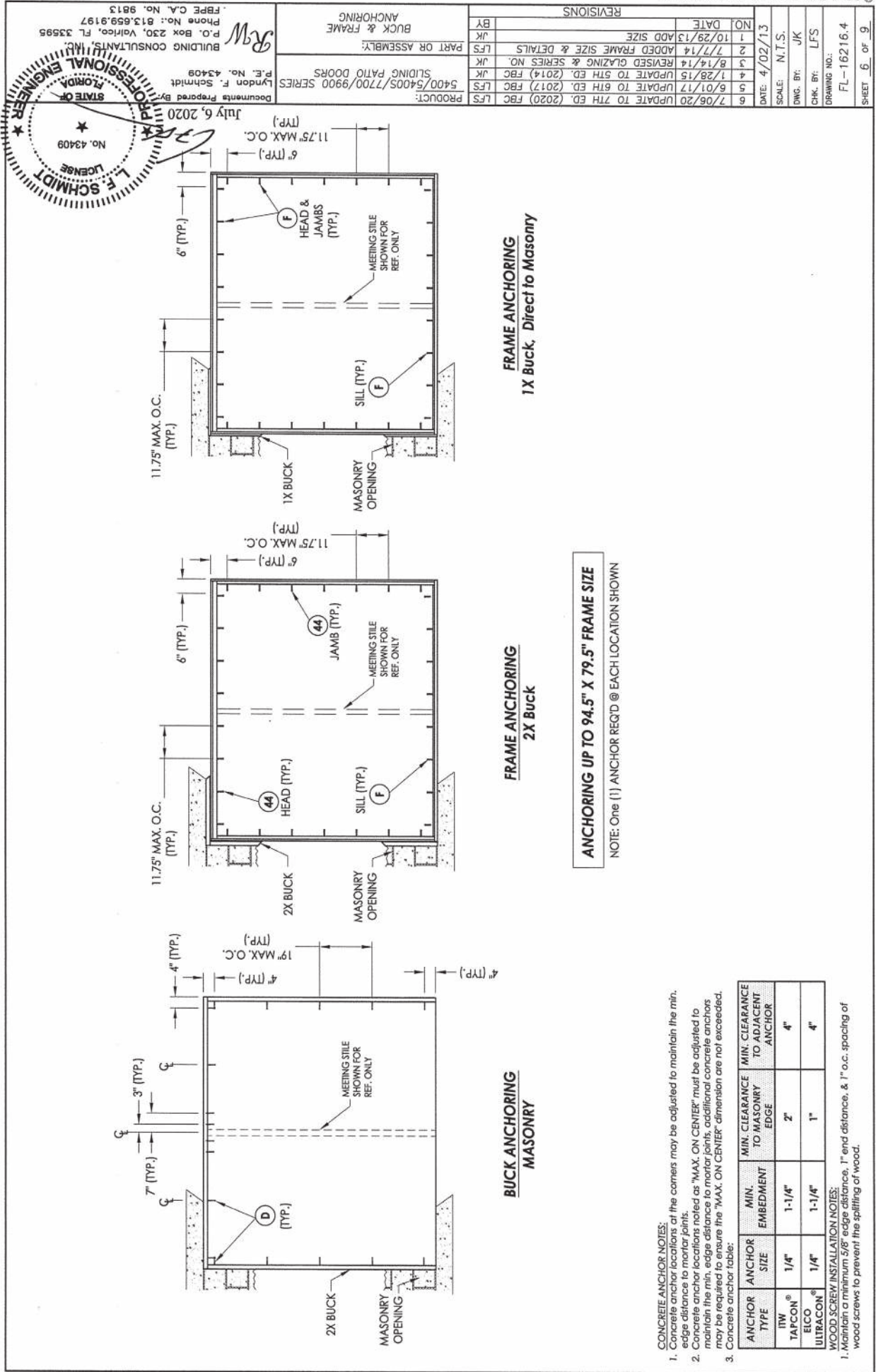


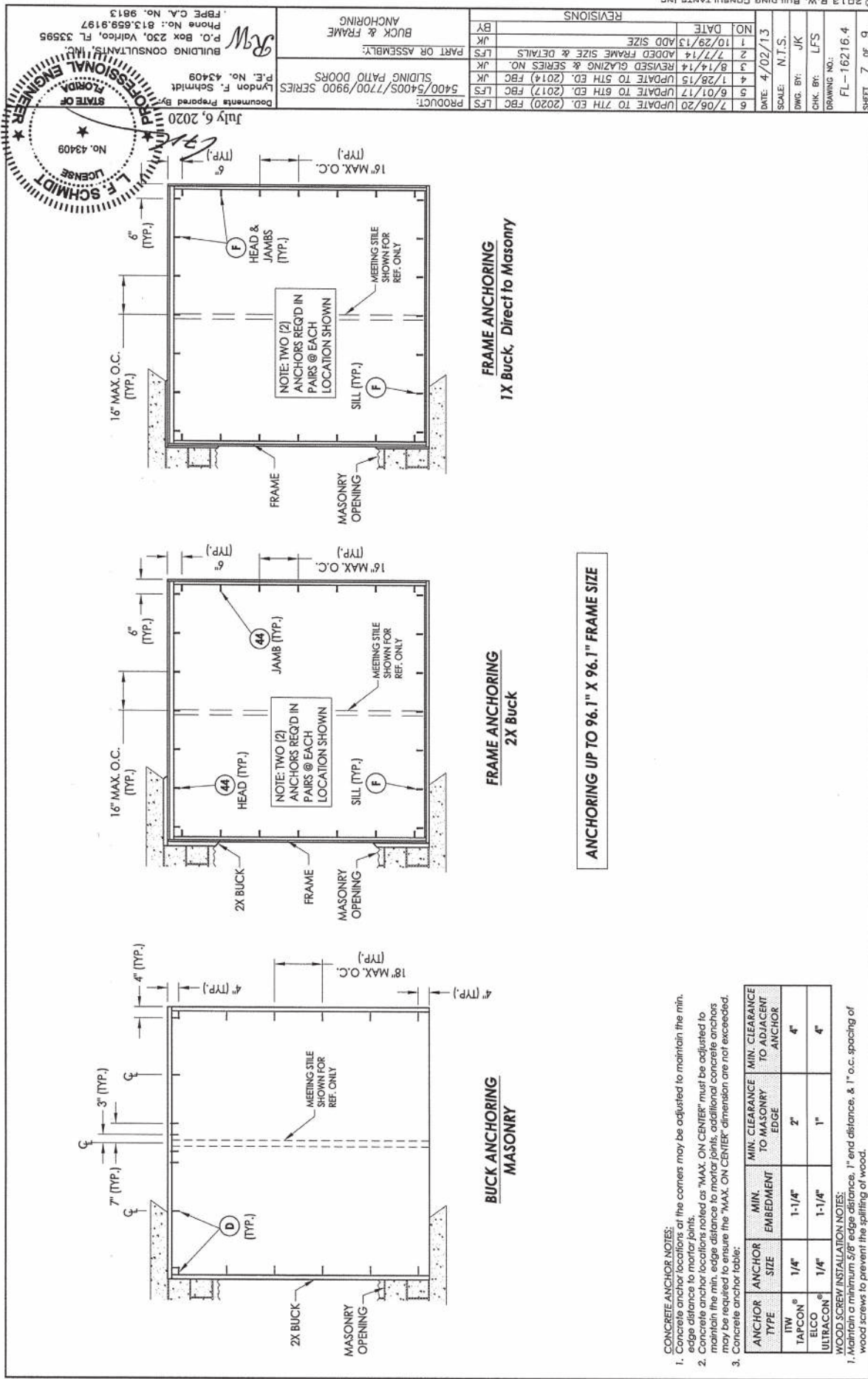




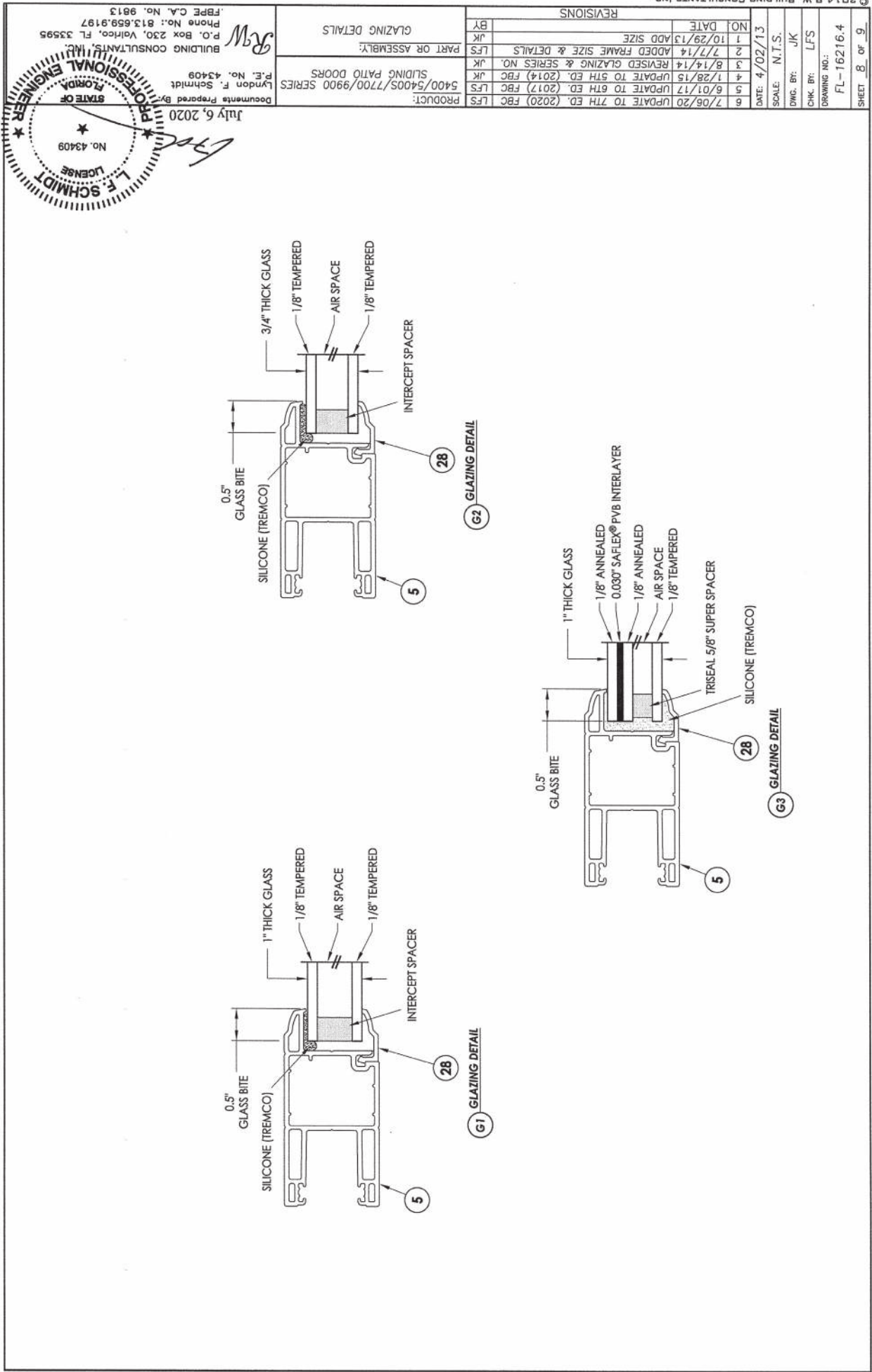








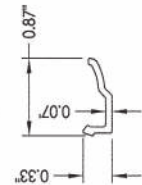




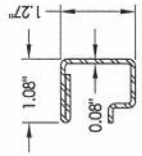


BILL OF MATERIALS		
ITEM #	DESCRIPTION	MATERIAL
A	1X BUCK SG >= 0.55	WOOD
B	2X BUCK SG >= 0.55	WOOD
C	1/4" MAX. SHIM SPACE	-
D	1/4" X 2-3/4" ELCO OR ITW CONCRETE SCREW	STEEL
E	MASONRY - 3,000 PSI MIN. CONCRETE CONFORMING TO ACI 301 OR HOLLOW BLOCK CONFORMING TO ASTM C90	CONCRETE
F	1/4" ELCO OR ITW CONCRETE SCREW (1-1/4" MIN. EMBEDMENT REQ'D. INTO CONCRETE)	STEEL
1	FRAME HEAD*	PVC
2	#8 x 2-3/4" FH QUADREX WOOD SCREW	STEEL
3	WEATHERSTRIP (SCHLEGEL #HF-7522-270)	-
4	HEAD TRACK*	PVC
5	STILE & RAIL*	PVC
6	SETTING BLOCK	-
7	SILICONE (SIKA 552)	SILICONE
8	DURASEAL SPACER SYSTEM	-
9	SHIM	-
10	TANDEM WHEEL	NYLON
11	ROLLING RAIL	ALUM
12	SILL*	PVC
13	SILL DUST COVER*	PVC
14	SILL PLUG	NYLON
15	SILL WEATHERSEAL	-
17	LEFT CAP FOR SILL ADAPTER*	PVC
18	RIGHT CAP FOR SILL ADAPTER*	PVC
19	#8 X 5/8" PAN HEAD, SQUARE, SELF-DRILLING SCREW	STEEL
20	OUTSIDE SILL CLADDING	STEEL
22	INSECT STOP	-
23	SCREEN	-
24	#8 X 7/8" PAN HEAD, QUADREX, SCREW	STEEL
25	FIXED PANEL ANCHOR BLOCK*	PVC
27	SCREW CAP	NYLON
28	GLAZING BEAD*	PVC

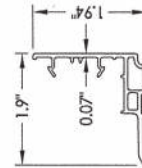
\* THE APPROVED WHITE RIGID PVC EXTERIOR EXTRUSIONS FOR WINDOWS ARE TO BE PRODUCED BY EXTRUDERS LICENSEES IN "AAMA CERTIFICATION PROGRAMS FOR RIGID PVC EXTRUSIONS".



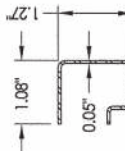
28 GLAZING BEAD



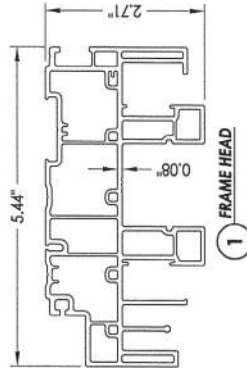
**50** **REINFORCEMENT** Stie



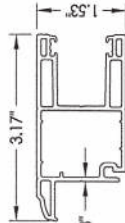
**52** INTERLOCK



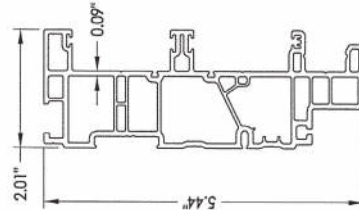
53 REINFORCEMENT Stile



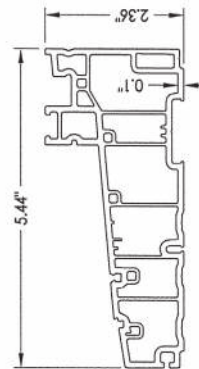
1 FRAME HEAD



5 STILE, RAIL



34 FRAME JAMB



**12** FRAME SILL

29	FOAM PLUG	-
30	HEAD WEATHERSEAL	-
31	#8 X 1-1/4" PAN HEAD, QUADREX, SCREW	STEEL
32	SASH STOPPER	EPDM
33	WEATHERSTRIP	-
34	FRAME JAMB*	PVC
35	WEATHERSTRIP	-
39	HANDLE KIT	STEEL
42	KEEPER FOR SCREEN	-
43	#4 X 5/8" PAN HEAD QUADREX SCREW	STEEL
44	#10 PPH WOOD SCREW (1-3/8" MIN. EMBEDMENT REQ'D INTO WOOD)	STEEL
46	STAINLESS STEEL DOUBLE POINT MORTISE LOCK KIT	STEEL
47	SASH COVERING CAP*	PVC
48	LOCK PLUG*	PVC
50	STILE REINFORCEMENT (CS TYPE B HOT DIPPED GALV.)	STEEL
51	#8 X 2" TRUSS HEAD QUADREX SCREW	STEEL
52	INTERLOCK*	PVC
53	STILE REINFORCEMENT (CS TYPE B HOT DIPPED GALV.)	STEEL
54	Q-LON WEATHERSTRIP (SCHLEGEL NO. QEZ 345)	-

REVISIONS		NO.	DATE	BY
JFK	ADD SIZE	1	10/29/13	JFK
LFS	ADDED FRAME SIZE & DETAILS	2	7/17/14	LFS
JFK	REVISED GLAZING & SERIES NO.	3	8/14/14	JFK
JFK	UPDATE TO 5TH ED. (2014) FBC	4	1/28/15	JFK
LFS	UPDATE TO 6TH ED. (2017) FBC	5	6/01/17	LFS
LFS	UPDATE TO 7TH ED. (2020) FBC	6	7/06/20	LFS

DATE: 4/02/13

SCALE: J.T.S.

DWG. BY: J.K.

CHK. BY: LFS

DRAWING NO:

FL - 162.16.4

SHEET 9 OF 9

PRODUCT:	5400/5400S/7700/9900 SERIES SLIDING PATIO DOORS
PART OR ASSEMBLY:	BILL OF MATERIALS & COMPONENTS

BUILDING CONSULTANTS, INC.  
 P.O. Box 230, Vero Beach, FL 33595  
 Phone No.: 813.659.9197  
 FBPE C.A. No. 9913

JUNE 6, 2020  
 L.F. SCHMIDT  
 LICENSE  
 No. 43409  
 STATE OF FLORIDA  
 PROFESSIONAL ENGINEER

Documents Prepared By  
 L.F. Schmidt  
 P.E. No. 43409