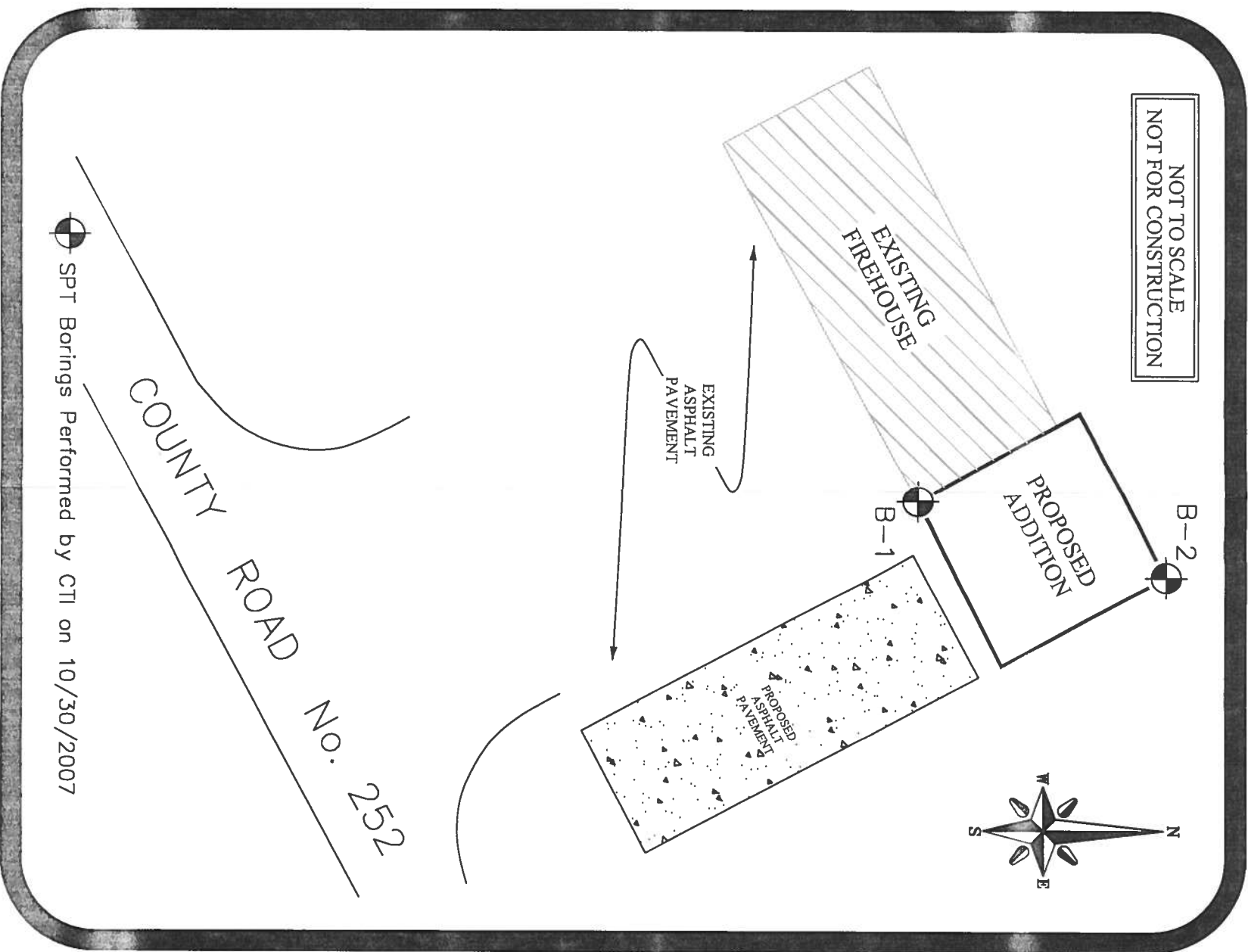


LEGEND

- Light gray, silty fine sand (SP-SM), trace organic, TOPSOIL
- Light tan, silty fine sand, (SM-SP)
- Reddish tan and light gray, mottled, clayey fine sand (SC)
- \* Standard Penetration Resistance (Blows/ft.)  
Measured Using a Manual Hammer System
- Groundwater Level Measured at Completion
- T.B.T. Test Boring Terminated
- A.B.T. Auger Boring Terminated
- 15.0' Termination Depth

NOTE: Please refer to text of report for additional information relative to groundwater conditions and potential fluctuations which could occur.



SUBSURFACE EXPLORATION  
ADDITION TO PINEMOUNT VOLUNTEER FIRE  
STATION NO. 43  
LAKE CITY, COLUMBIA COUNTY, FLORIDA

CAL-TECH TESTING, INC.  
P.O. Box 1625  
Lake City, Florida 32056-1625  
Phone: (386) 755-3633  
Fax: (386) 752-5456

FIELD EXPLORATION PLAN			
8			
GENERALIZED SUBSURFACE PROFILE			
DRAWN	APPROVED	DATE	FIGURE
		11/02/2007	1
Project No. 07-00546-01		SCALE: N.T.S.	