

Tan

Clay

E. Brown

P. Gray

Q. Gray

K. Blue

S. Blue

Evergreen

B. Red

C. Red

T. Burgu

V. Burgu

Black

Deposit\$949.45

Price\$5,585.00

Share

Select Your Trim Color

White

P. Beige

Sandstone

Tan

Clay

E. Brown

P. Gray

Q. Gray

K. Blue

S. Blue

Evergreen

B. Red

C. Red

T. Burgu

V. Burgu

Black



Installation Surface

Learn More

GROUND OR GRAVEL

CONCRETE

ASPHALT

Certification

CERTIFIED FOR 150 MPH

CERTIFIED 150 MPH 5' ON CENTER - 12GA +\$300

CERTIFIED 170 MPH 4' ON CENTER - 14GA +\$375

CERTIFIED 170 MPH 4' ON CENTER - 12GA +\$720

29 GA or 26 GA Sheeting

Learn More

FL 26 GA

Delivery Zip Code:

Price:\$5,585.00

Roof Style:Vertical

Roof Color:B. Red

Trim Color:White

Sides Color:N/A

Garage Door Color:N/A

Zipcode:32055

Width:24'

Length:35'

Height:10'

Garage Doors:0

Walk-In Doors:0

Windows:0

MAXIMUM ALLOWABLE
WIND SPEED

NOTES:
1. DOORS AND WINDOWS SHOWN MAY BE SUBSTITUTED FOR DIFFERENT PRODUCT LINES AND/OR MODEL, PROVIDED THE FOLLOWING CONDITIONS ARE MET:
A. PRODUCT SHALL HAVE A VALID FPD PRODUCT APPROVAL.
B. COMPONENTS ARE INSTALLED ACCORDING TO MANUFACTURER'S INSTALLATION REQUIREMENTS.
2. FLOOR CONNECTIONS FOR DOOR AND WINDOW FRAMES RETAIN THE SAME FOR SUBSTITUTED PRODUCTS. HEADERS AND WINDOW WALLS MAY BE BASED ON LOWERED AS NECESSARY TO ACCOMMODATE SUBSTITUTED PRODUCT.

100

- [illegible]

1. *Journal of the American Medical Association*, 2000; 283: 2689-2695.

AVERAGE FASTENER SPACING SPECIFICATIONS			
MINIMAL POST / RAFTER SPEED (PPH)	MAXIMUM POST / RAFTER SPACING (FEET)	AVERAGE FASTENER SPACING ON-CENTERS ALONG RAFTERS OR PURLINS, AND POSTS OR GIRTS (INCHES)	
		INTERIOR POSTS/RAFTERS	END POSTS/RAFTERS
10116	5.0	6	6
10139	4.0	6	6

and wall panels fastened directly to 12 or 14 gauge steel tube framing, or 16 and 20 feet or less, and roof slopes of 7° to 27° (1.5:12 to 6:12 pitch). Spacing may vary.

**METAL CARPORT INSTALLATION PLANS
AND DETAILS AND FRAMING AND
FASTENER SPECIFICATIONS**

FOR CONSTRUCTION IN THE STATE OF FLORIDA

PREPARED FOR
CAROLINA CARPORTS, INC.
P.O. BOX 1263
ROBSON, NORTH CAROLINA 27017

PREPARED BY
BECHTOL ENGINEERING AND TESTING, INC.
605 WEST NEW YORK AVENUE

DELAND, FLORIDA 32720
Certificate of Authorization No. 00005492

BUILDING WIDTH (feet)		ULTIMATE WIND SPEED (mph)											
		110	120	130	140	150	160	170	180				
12													
14													
16													
18													
20													
22													
24													
26													
28													
30													

30' Anchor
Detail ID

48' Anchor
Detail IC

60' Anchor
Detail IC


DETAILS IC AND TO SHOWN ON SHEET 4 OF 6

THIS IS TO CERTIFY THAT THE CALCULATIONS AND SPECIFICATIONS HEREIN HAVE BEEN PREPARED BY THE UNDERSIGNED PROFESSIONAL ENGINEER, AND ARE IN ACCORDANCE WITH THE REQUIREMENTS OF SECTION 1606 OF THE FLORIDA BUILDING CODE, SEVENTH EDITION (2020).

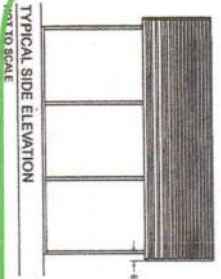
BECHTEL ENGINEERING AND TESTING, INC.
605 WEST NEW YORK AVENUE
DELAND, FLORIDA 32720

STATE OF
FLORIDA
PROFESSIONAL ENGINEER

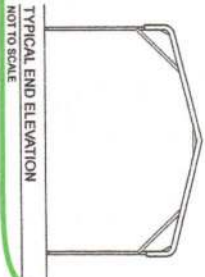
CAROLINA CARPORTS, INC.

 BECHTOL ENGINEERING AND TESTING, INC. <small>CONCRETE REINFORCEMENT, PRECAST/CAST-IN-PLACE, AND REPAIRS AND TESTING OF STRUCTURES</small>		DATE 2/21/2023	
CLASS	AMG	PROJ	MTS
CHRG TB / CS	PRJ 03-2001		
TRAIL TB / IP	SHEET 1 OF 6		

BOW FRAME RAFTER OPEN CARPORT - HORIZONTAL ROOF

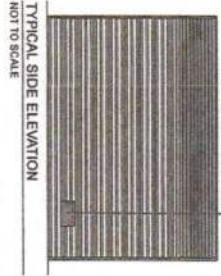


TYPICAL SIDE ELEVATION
NOT TO SCALE

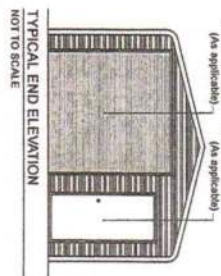


TYPICAL END ELEVATION
NOT TO SCALE

BOW FRAME RAFTER ENCLOSED BUILDING - HORIZONTAL ROOF

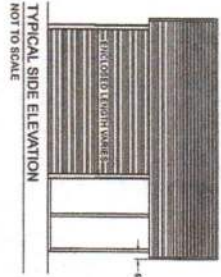


TYPICAL SIDE ELEVATION
NOT TO SCALE

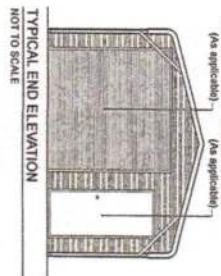


TYPICAL END ELEVATION
NOT TO SCALE

BOW FRAME RAFTER UTILITY BUILDING - HORIZONTAL ROOF

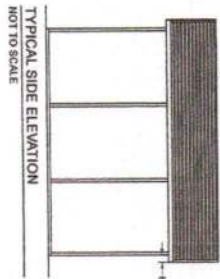


TYPICAL SIDE ELEVATION
NOT TO SCALE

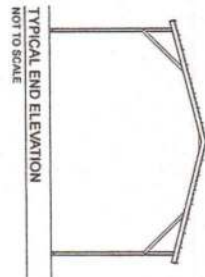


TYPICAL END ELEVATION
NOT TO SCALE

BOX EAVE FRAME RAFTER OPEN CARPORT - HORIZONTAL ROOF

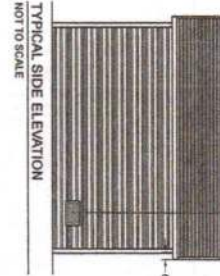


TYPICAL SIDE ELEVATION
NOT TO SCALE

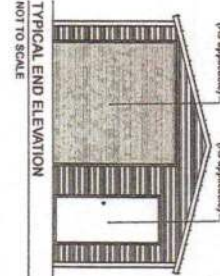


TYPICAL END ELEVATION
NOT TO SCALE

BOX EAVE FRAME RAFTER ENCLOSED BLDG - HORIZONTAL ROOF

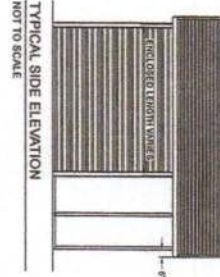


TYPICAL SIDE ELEVATION
NOT TO SCALE

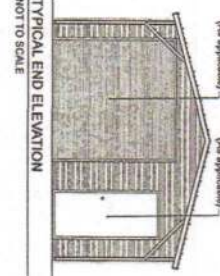


TYPICAL END ELEVATION
NOT TO SCALE

BOX EAVE FRAME RAFTER UTILITY BLDG - HORIZONTAL ROOF

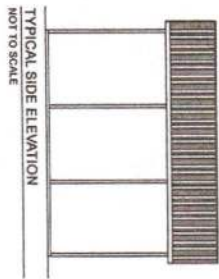


TYPICAL SIDE ELEVATION
NOT TO SCALE

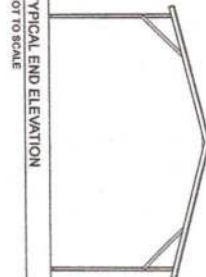


TYPICAL END ELEVATION
NOT TO SCALE

BOX EAVE FRAME RAFTER OPEN CARPORT - VERTICAL ROOF

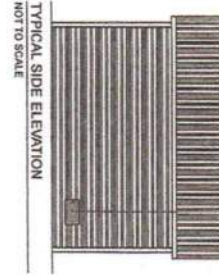


TYPICAL SIDE ELEVATION
NOT TO SCALE

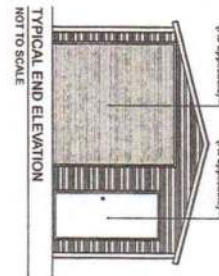


TYPICAL END ELEVATION
NOT TO SCALE

BOX EAVE FRAME RAFTER ENCLOSED BLDG - VERTICAL ROOF

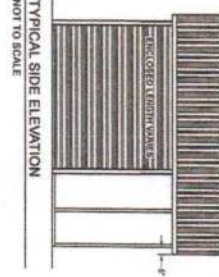


TYPICAL SIDE ELEVATION
NOT TO SCALE

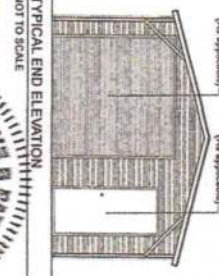


TYPICAL END ELEVATION
NOT TO SCALE

BOX EAVE FRAME RAFTER UTILITY BLDG - VERTICAL ROOF

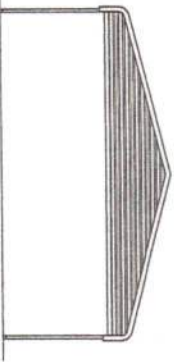


TYPICAL SIDE ELEVATION
NOT TO SCALE

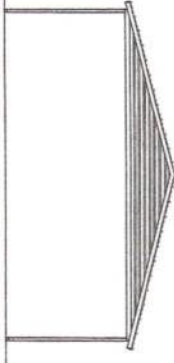


TYPICAL END ELEVATION
NOT TO SCALE

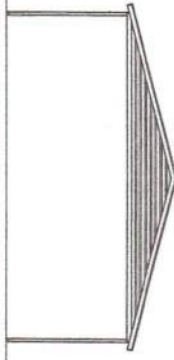
TYPICAL BOW RAFTER GABLE END ELEVATION
NOT TO SCALE



TYPICAL BOX EAVE RAFTER GABLE END ELEVATION
NOT TO SCALE



TYPICAL BOX EAVE RAFTER GABLE END ELEVATION
NOT TO SCALE



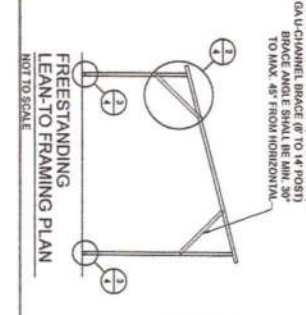
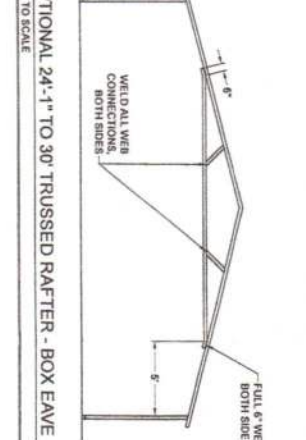
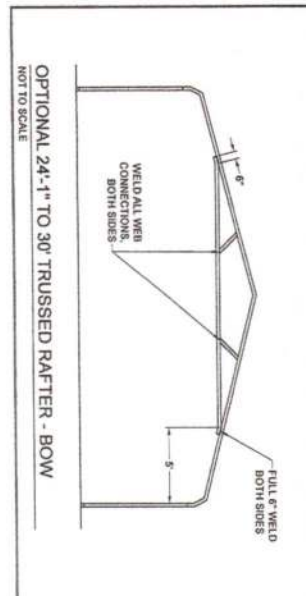
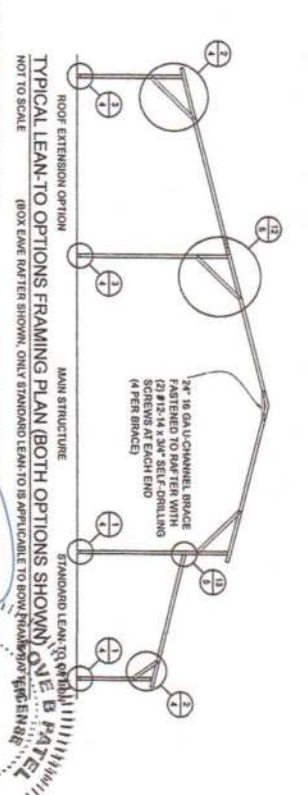
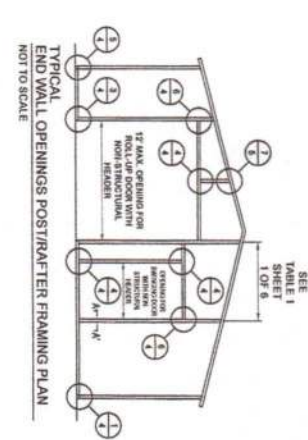
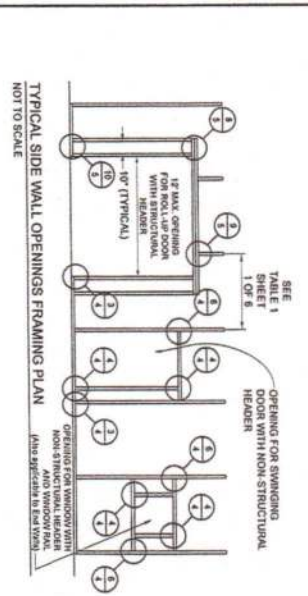
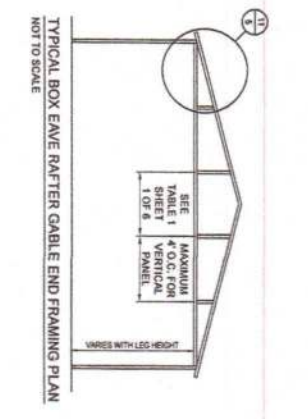
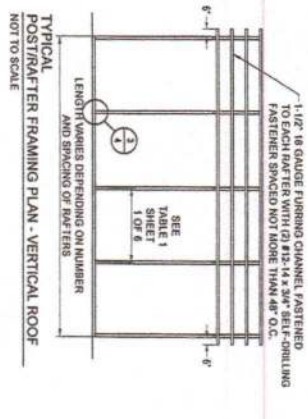
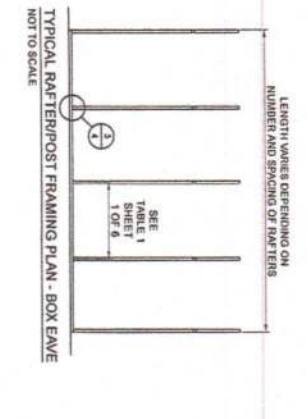
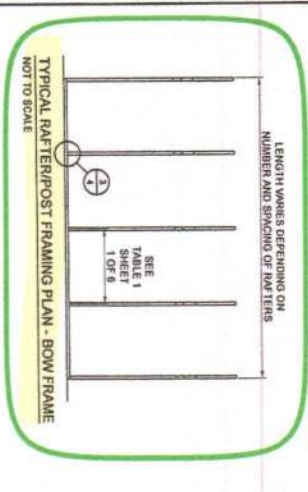
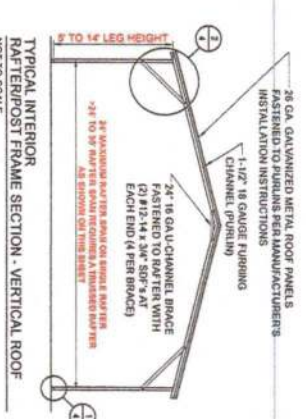
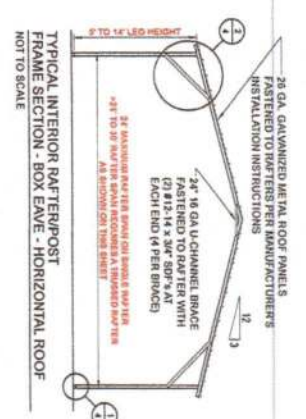
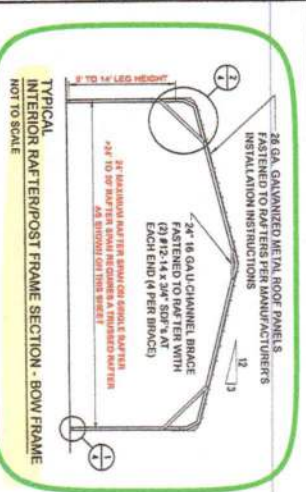
BECHTOL ENGINEERING AND TESTING, INC.
605 WEST NEW YORK AVENUE
DELAND, FLORIDA 32720

CAROLINA CARPORTS, INC.
GENERIC PLANS FOR USE IN THE STATE OF FLORIDA

BECHTOL ENGINEERING AND TESTING, INC.
605 WEST NEW YORK AVENUE
DELAND, FLORIDA 32720
No. 90783
STATE OF FLORIDA
REGISTERED PROFESSIONAL ENGINEER

LOVE & PATER
OWNER

DATE: 2/21/2023
DRAWN: NIS
CHECKED: JTB/CS
PROJECT: 18/1/P
SHEET 7 OF 6



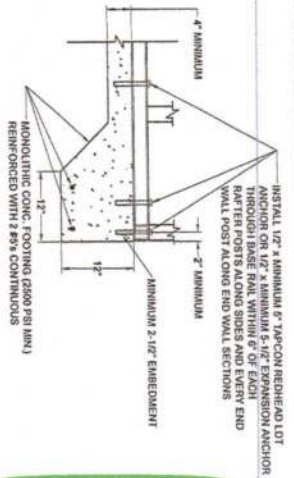
CAROLINA CARPORTS, INC.
 GENERIC PLANS FOR USE IN THE STATE OF FLORIDA

BECHTOL ENGINEERING AND TESTING, INC.
 805 WEST NEW YORK AVENUE
 DELAND, FLORIDA 32720

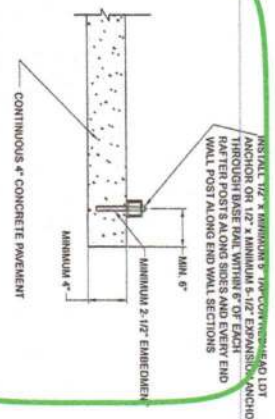
STATE OF FLORIDA
 PROFESSIONAL ENGINEER

No. 00763

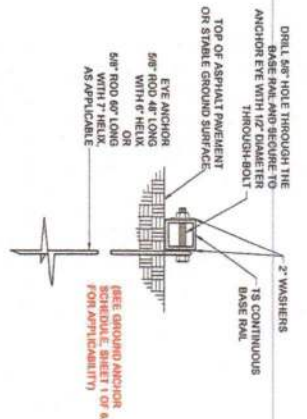
DATE: 2/21/2003
 BY: BMS
 CHECKED: NTS
 SCALE: 1/8\"/>



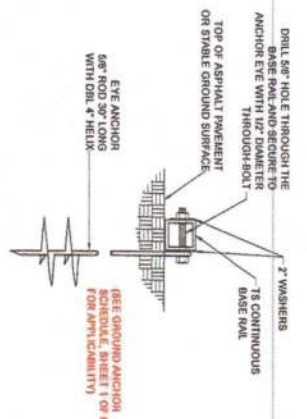
1A
CONCRETE BASE RAIL ANCHORAGE
Not to Scale



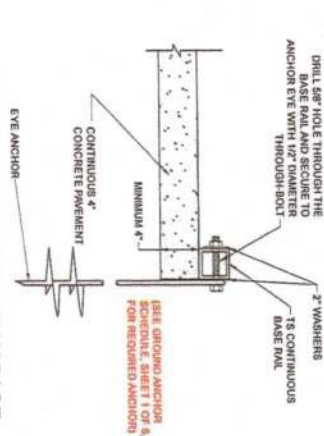
1B
CONCRETE BASE RAIL ANCHORAGE
Not to Scale
(OPTIONAL - OPEN CARPORTS ONLY)



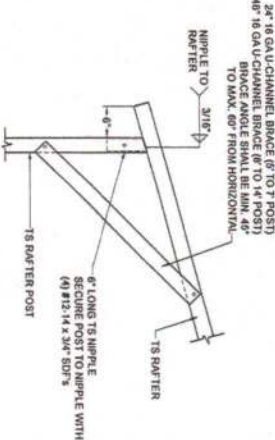
1C
BASE RAIL DEEP ANCHORAGE
Not to Scale



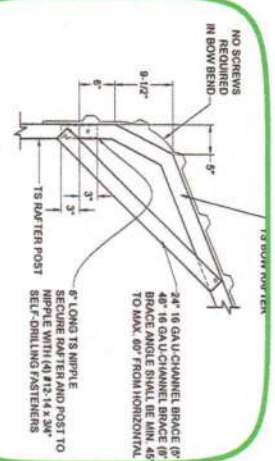
1D
BASE RAIL ANCHORAGE
Not to Scale



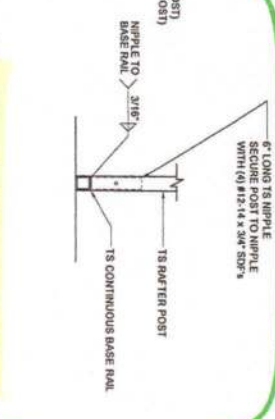
1E
CONCRETE BASE RAIL ANCHORAGE
Not to Scale
(OPEN CARPORTS WHERE SLAB EDGE DISTANCE DOES NOT MEET MINIMUM EDGE DISTANCE SHOWN IN DETAIL 1B)



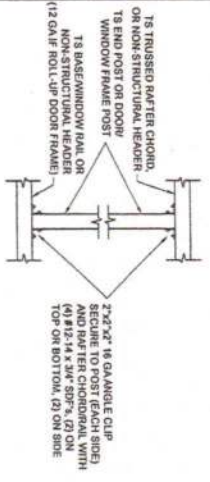
2A
BOX EAVE RAFTER/POST DETAIL
Not to Scale



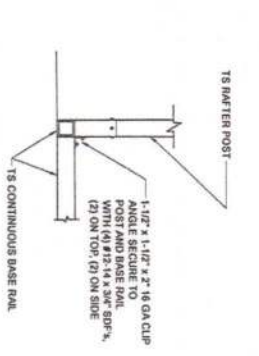
2B
BOW RAFTER/POST DETAIL
Not to Scale



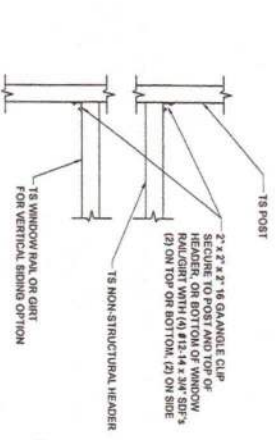
3
POST/BASE RAIL CONN. DETAIL
Not to Scale



4
POST TO RAIL, TRUSS CHORD, OR NON-STRUCTURAL HEADER CONN. DETAIL
Not to Scale



5
END POST/BASE RAIL CONN.
Not to Scale



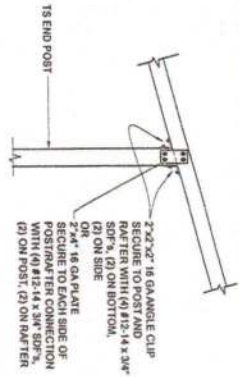
6
NON-STRUCTURAL HEADER, WINDOW RAIL, OR GIRT TO POST CONN. DETAIL
Not to Scale

BECHTOL ENGINEERING AND TESTING, INC.
1000 N. W. 10th Avenue
Fort Lauderdale, FL 33304
TEL: (954) 572-2020

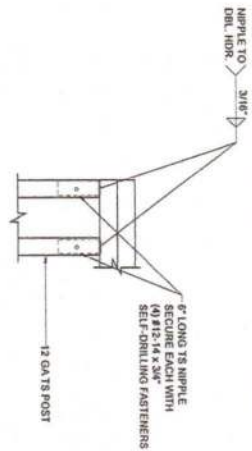
STATE OF FLORIDA
Professional Engineer
No. 00783
L. J. BECHTOL

CAROLINA CARPORTS, INC.
GENERIC PLANS FOR USE IN THE STATE OF FLORIDA

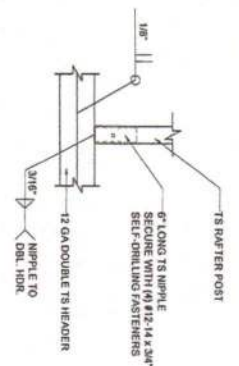
DATE: 2/21/2023
BY: MMB
CHECKED: TB/GS
PROJECT: 1011P
SHEET 4 OF 6



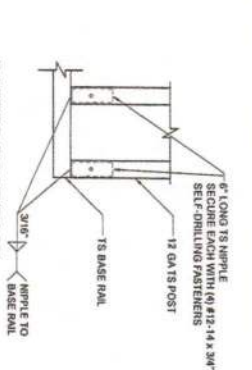
7
END POST/RAFTER CONN. DETAIL
Not To Scale



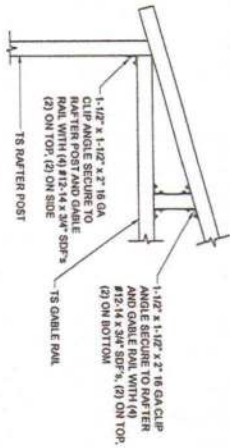
8
RAFTER POST/DBL. HEADER DETAIL
Not To Scale



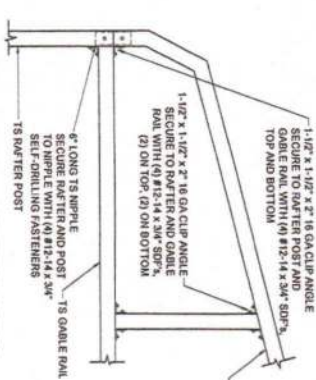
9
RAFTER POST/HEADER DETAIL
Not To Scale



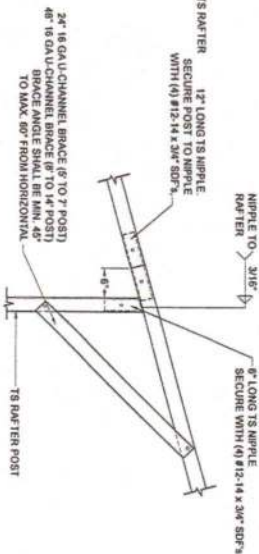
10
RAFTER POST/BASE RAIL CONNECTION DETAIL
Not To Scale



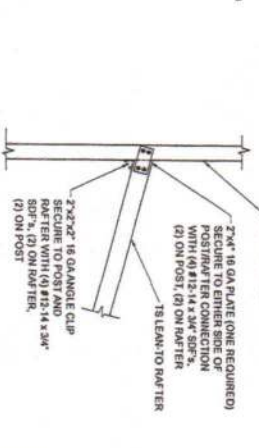
11A
GABLE RAIL TO RAFTER POST CONNECTION DETAIL
Not To Scale



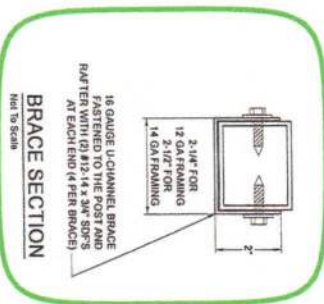
11B
GABLE RAIL TO RAFTER POST CONNECTION DETAIL
Not To Scale



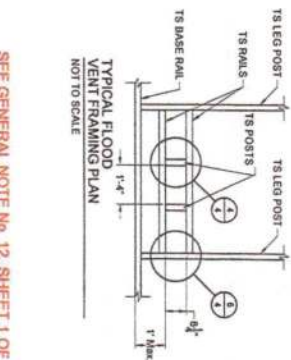
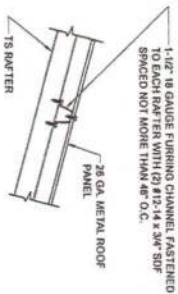
12
SIDE EXTENSION RAFTER/POST DETAIL
Not To Scale



13
POST / LEAN-TO RAFTER CONN. DETAIL
Not To Scale



14
BRACE SECTION
Not To Scale



SEE GENERAL NOTE No. 12, SHEET 1 OF 6.

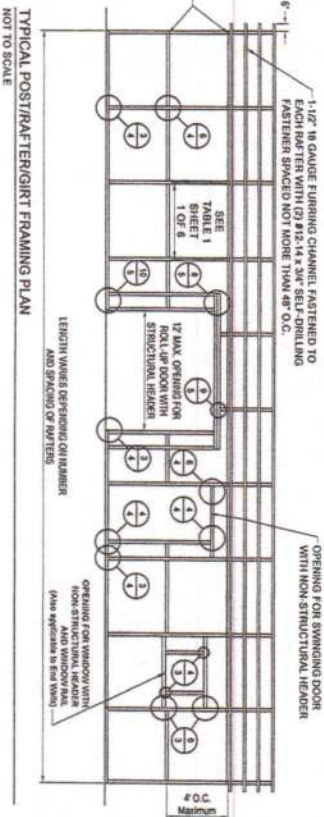
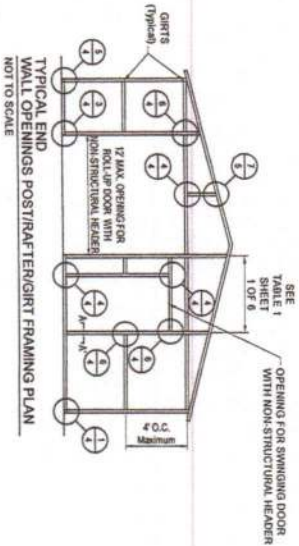
CAROLINA CARPORTS, INC.
GENERIC PLANS FOR USE IN THE STATE OF FLORIDA

DATE	2/21/2023
DESIGN	AMG
CHECK	NIS
SCALE	AS SHOWN
PROJECT	TR/CS
DATE	02/20/21
PROJECT	TR/JP
SHEET	2 OF 6

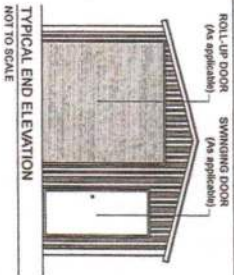
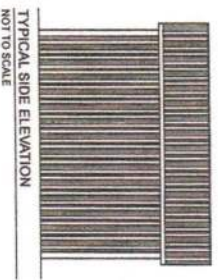
BECHTOL ENGINEERING AND TESTING, INC.
10000 W. BAYVIEW BLVD., SUITE 100
DADE CITY, FL 34608-9720
TEL: 813-841-1111
FAX: 813-841-1112
WWW.BECHTOL-ETI.COM

STATE OF FLORIDA
Professional Engineer
No. 00783
LOUIS PATRICK
FLORIDA

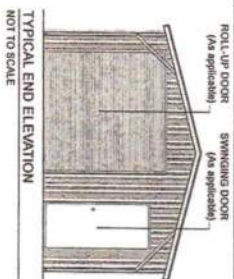
VERTICAL SIDE OPTION



BOX EAVE FRAME RAFTER ENCLOSED BLDG - VERTICAL SIDES



BOX EAVE FRAME RAFTER UTILITY BLDG - VERTICAL SIDES



CAROLINA CARPORTS, INC.
GENERIC PLANS FOR USE IN THE STATE OF FLORIDA

DATE	2/21/2023
DESIGN	LMG
CHECK	NTS
PROJECT	18/CS
PROPOSED	18/1P
SHEET	SHEET 1 OF 6

BECHTOL ENGINEERING AND TESTING, INC.
605 WEST NEW YORK AVENUE
DELAND, FLORIDA 32720

LOVE B. PATEL
No. 90753
STATE OF FLORIDA
PROFESSIONAL ENGINEER