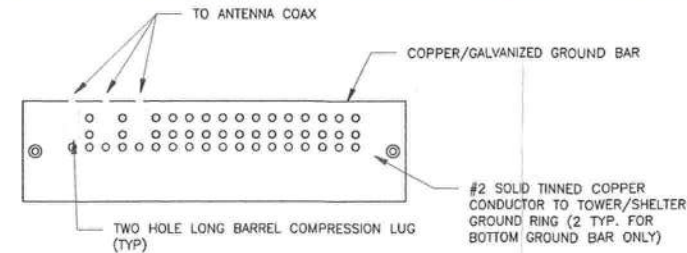
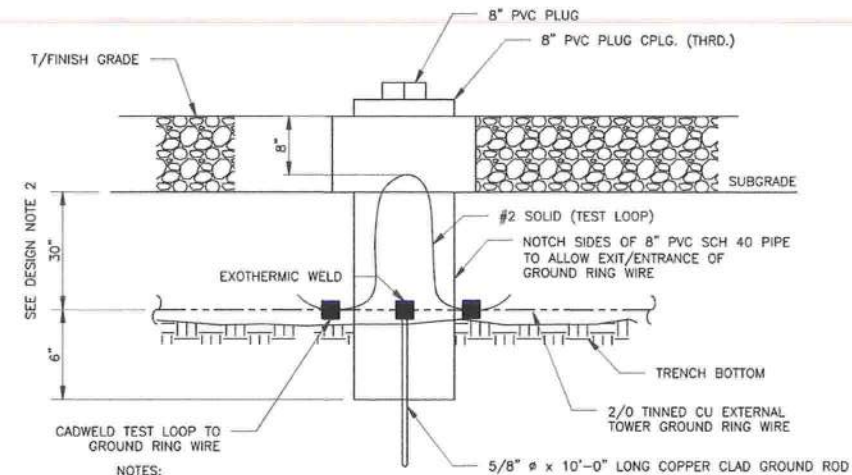


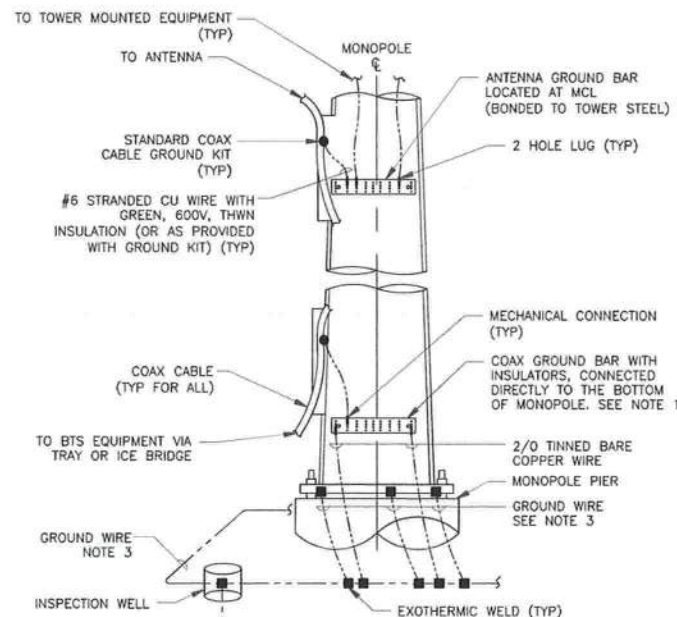
1 ANTENNA SECTOR GROUND BAR DETAIL  
SCALE: NOT TO SCALE



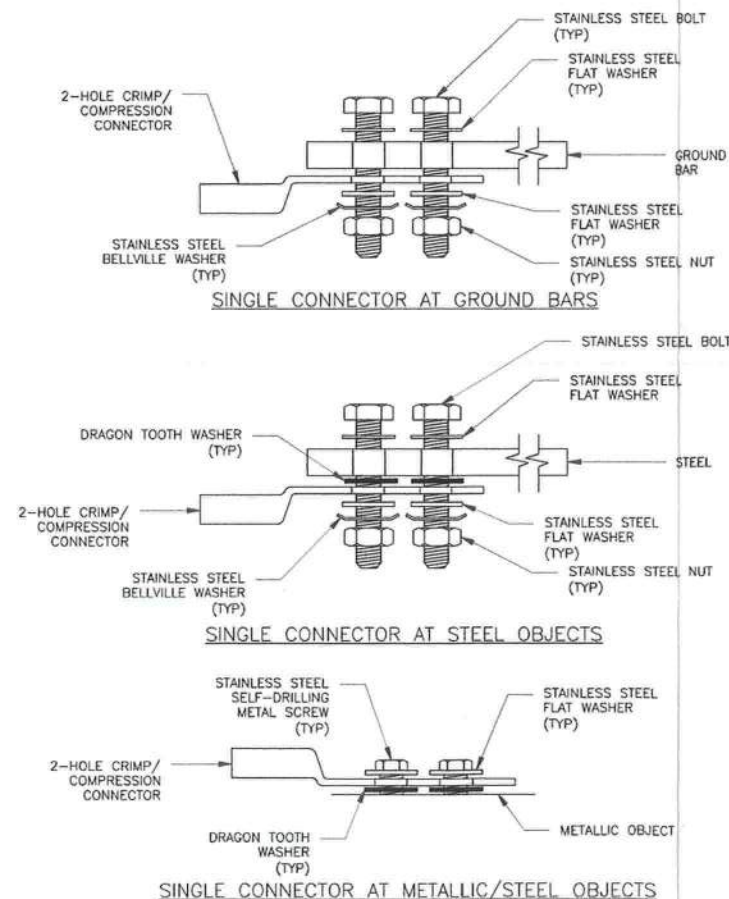
2 TOWER/SHELTER GROUND BAR DETAIL  
SCALE: NOT TO SCALE



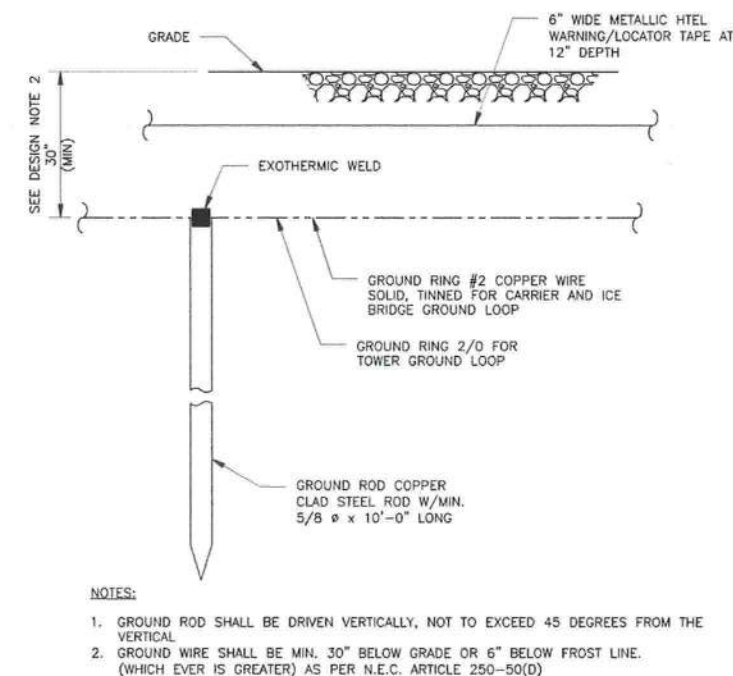
3 INSPECTION WELL DETAIL  
SCALE: NOT TO SCALE



4 TYPICAL ANTENNA CABLE GROUNDING  
SCALE: NOT TO SCALE



5 HARDWARE DETAIL FOR EXTERIOR CONNECTIONS  
SCALE: NOT TO SCALE



6 GROUND ROD DETAIL  
SCALE: NOT TO SCALE

**verizon**  
7701 EAST TELECOM PARKWAY WING A-1  
TEMPLE TERRACE, FL 33637

**CROWN CASTLE**  
8000 AVALON BLVD, SUITE 700  
ALPHARETTA, GA 30009

**towersource**  
A NextEdge Company  
1355 WINDWARD CONCOURSE  
SUITE 410  
ALPHARETTA, GA 30005  
TEL: 678-990-2338

VERIZON SITE NUMBER:  
**9066145**

BU #: 824653  
HWY 90 AT NW BROWN RD

297 NW BROWN ROAD  
LAKE CITY, FL 32055

EXISTING 198'-0" MONOPOLE

ISSUED FOR:

REV	DATE	DRWN	DESCRIPTION	DES./QA
0	08/04/22	PS	FINAL	SIH



THIS ITEM HAS BEEN DIGITALLY SIGNED AND SEALED BY JAVAD K. PARSA, P.E. ON THE DATE ADJACENT TO THE SEAL. PRINTED COPIES OF THIS DOCUMENT ARE NOT CONSIDERED SIGNED AND SEALED AND THE SIGNATURE MUST BE VERIFIED ON ANY ELECTRONIC COPIES.

IT IS A VIOLATION OF LAW FOR ANY PERSON, UNLESS THEY ARE ACTING UNDER THE DIRECTION OF A LICENSED PROFESSIONAL ENGINEER, TO ALTER THIS DOCUMENT.

SHEET NUMBER: REVISION:

**G-1** **0**