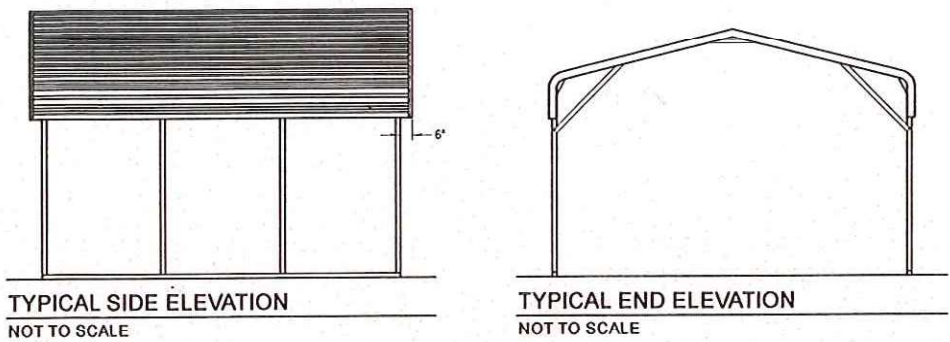
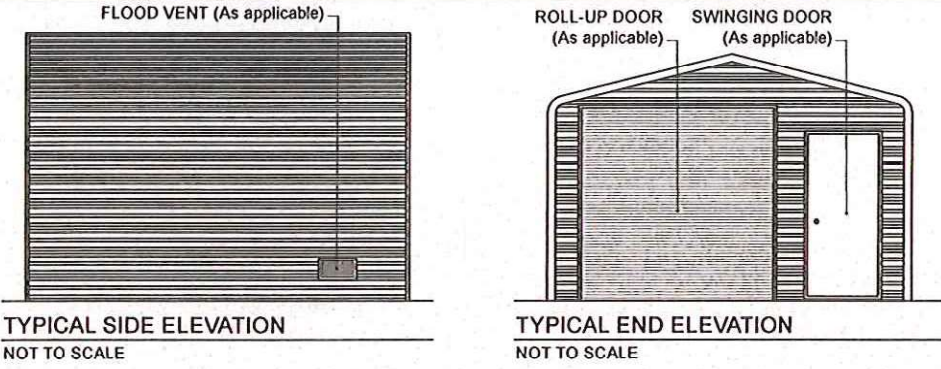


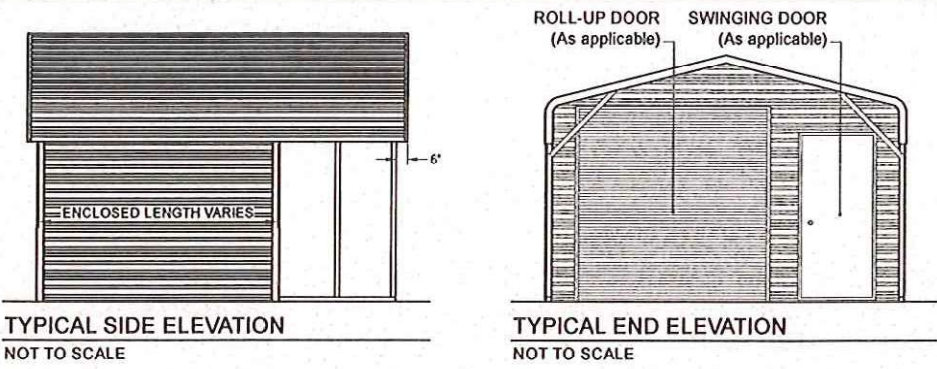
BOW FRAME RAFTER OPEN CARPORT - HORIZONTAL ROOF



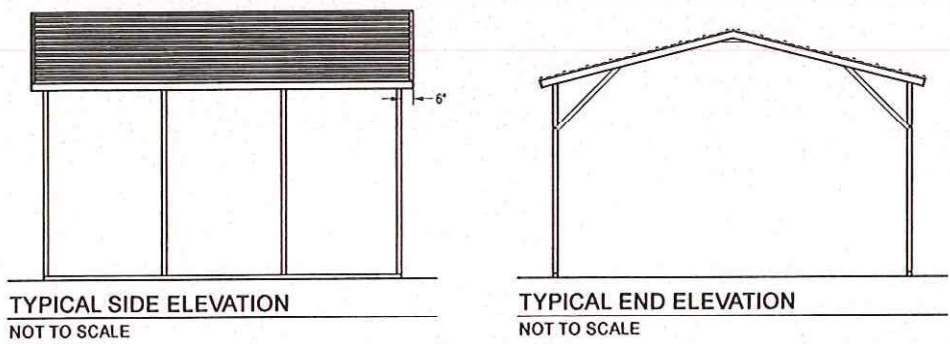
BOW FRAME RAFTER ENCLOSED BUILDING - HORIZONTAL ROOF



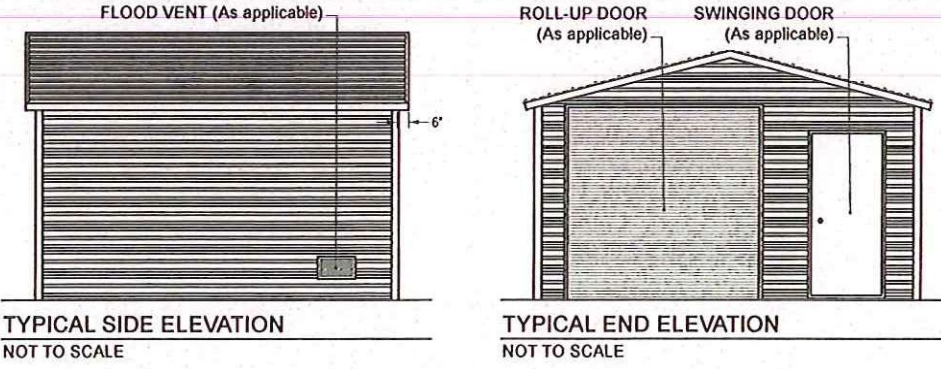
BOW FRAME RAFTER UTILITY BUILDING - HORIZONTAL ROOF



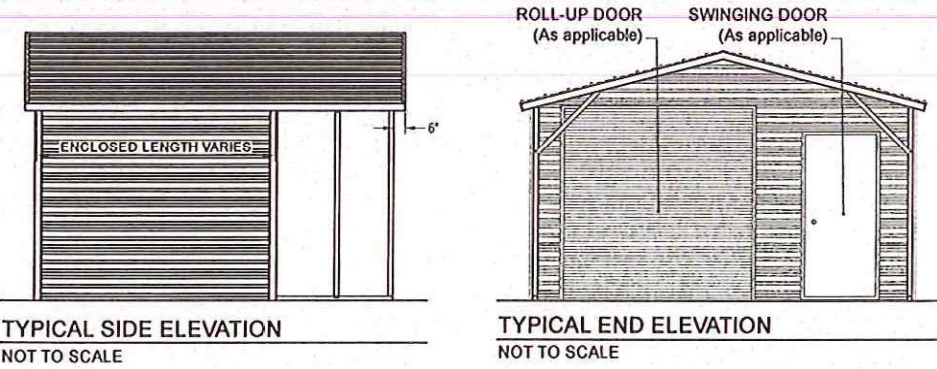
BOX EAVE FRAME RAFTER OPEN CARPORT - HORIZONTAL ROOF



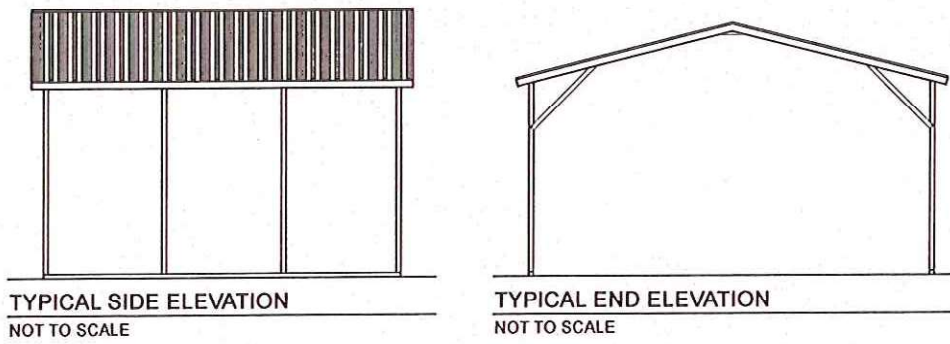
BOX EAVE FRAME RAFTER ENCLOSED BLDG - HORIZONTAL ROOF



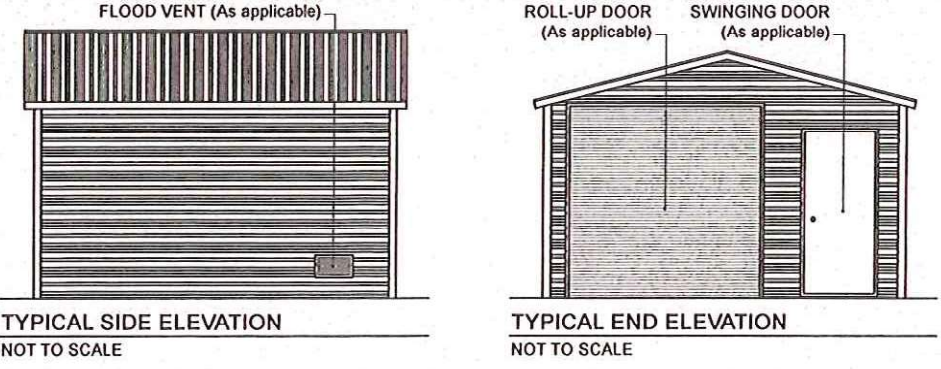
BOX EAVE FRAME RAFTER UTILITY BLDG - HORIZONTAL ROOF



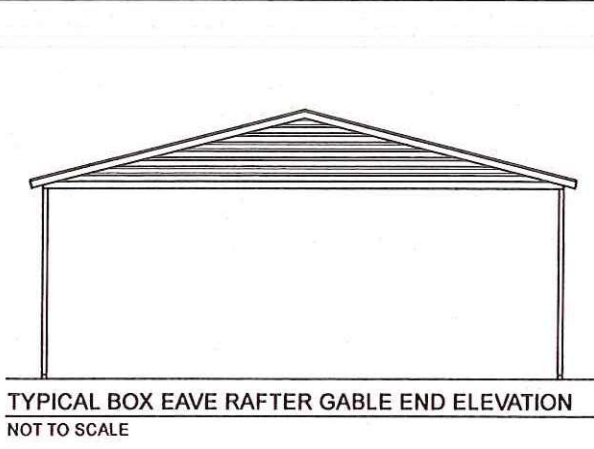
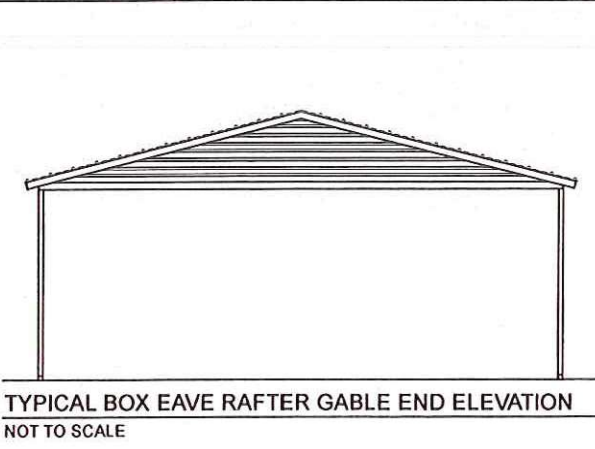
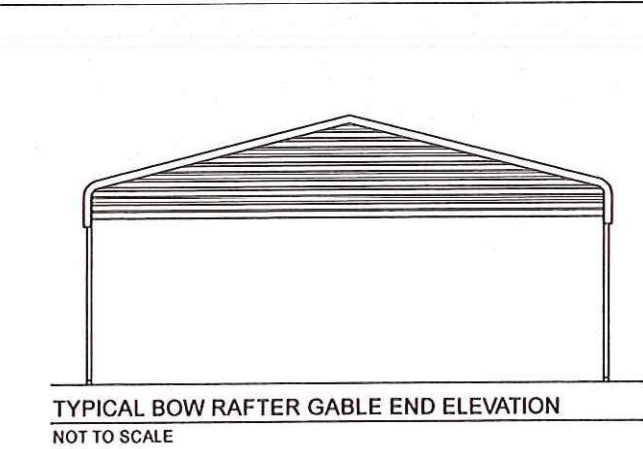
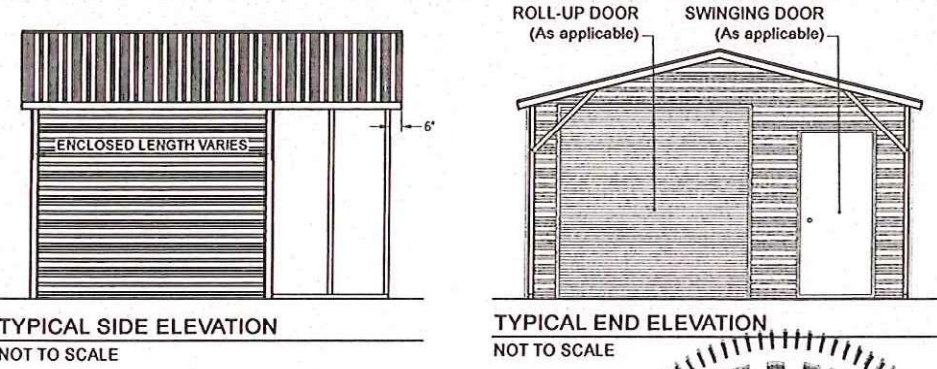
BOX EAVE FRAME RAFTER OPEN CARPORT - VERTICAL ROOF



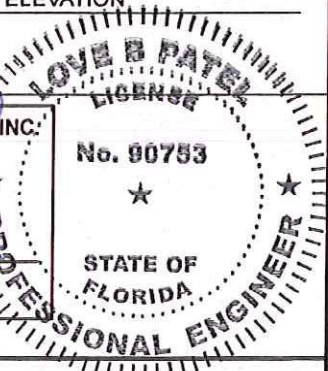
BOX EAVE FRAME RAFTER ENCLOSED BLDG - VERTICAL ROOF



BOX EAVE FRAME RAFTER UTILITY BLDG - VERTICAL ROOF

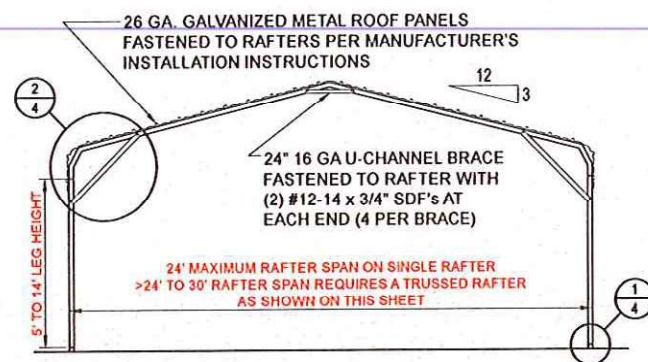


BECHTOL ENGINEERING AND TESTING, INC.
605 WEST NEW YORK AVENUE
DELAND, FLORIDA 32720

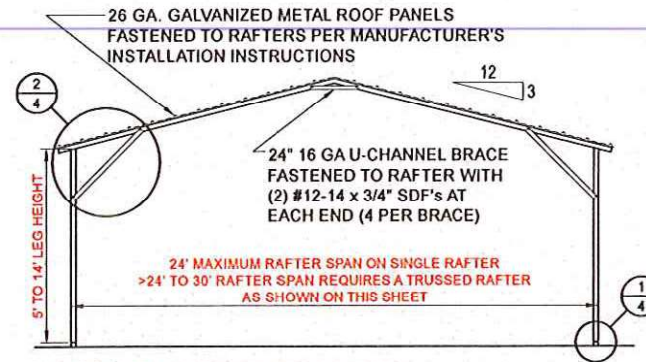


CAROLINA CARPORTS, INC.
GENERIC PLANS FOR USE IN THE STATE OF FLORIDA

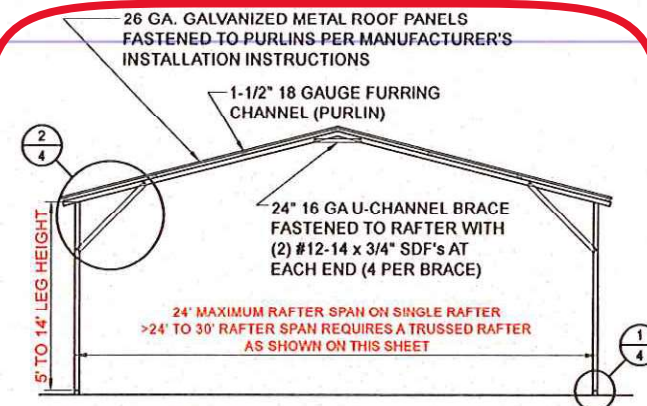
FIELD	DATE	2/21/2023
DRAWN	MKB	SCALE
CHECKED	TB / CS	PROJ NO.
APPROVED	TB / LP	G23001
		SHEET 2 OF 6



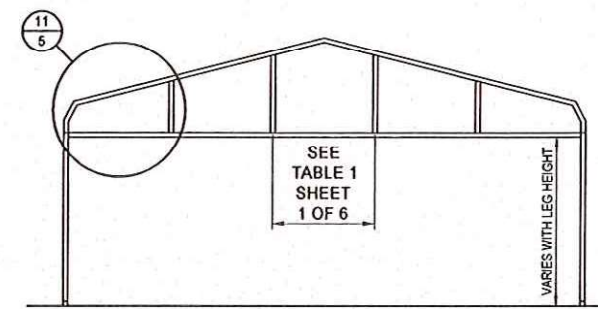
TYPICAL INTERIOR RAFTER/POST FRAME SECTION - BOW FRAME
NOT TO SCALE



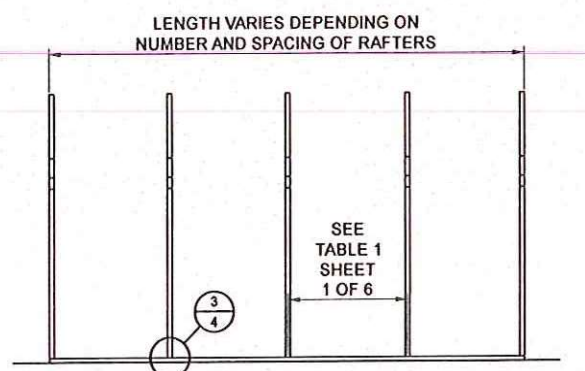
TYPICAL INTERIOR RAFTER/POST FRAME SECTION - BOX EAVE - HORIZONTAL ROOF
NOT TO SCALE



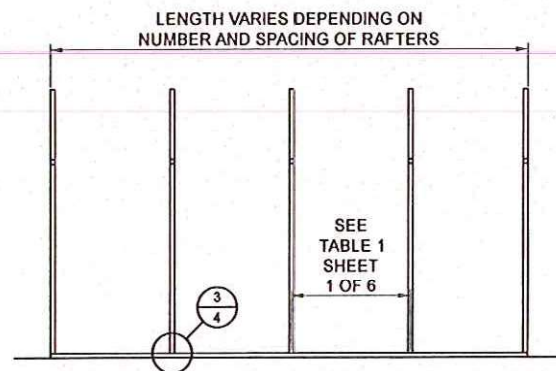
TYPICAL INTERIOR RAFTER/POST FRAME SECTION - VERTICAL ROOF
NOT TO SCALE



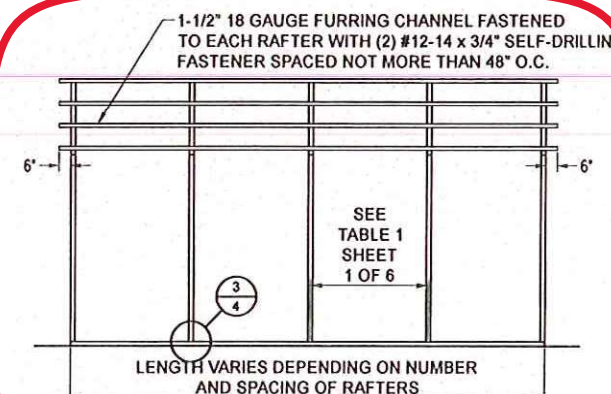
TYPICAL BOW RAFTER GABLE END FRAMING PLAN
NOT TO SCALE



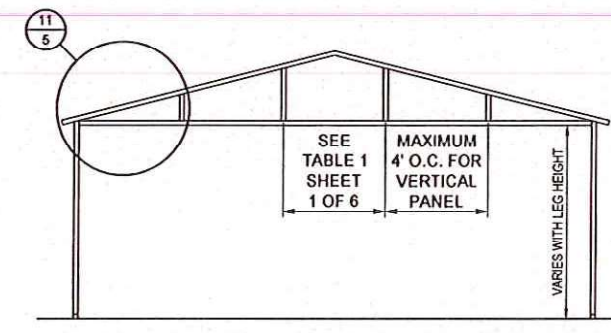
TYPICAL RAFTER/POST FRAMING PLAN - BOW FRAME
NOT TO SCALE



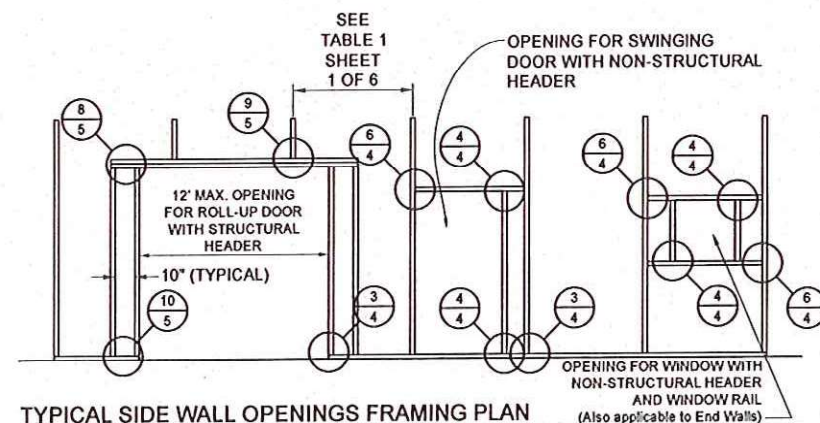
TYPICAL RAFTER/POST FRAMING PLAN - BOX EAVE
NOT TO SCALE



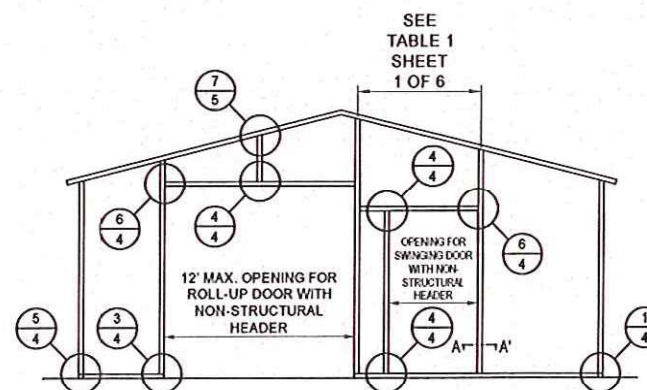
TYPICAL POST/RAFTER FRAMING PLAN - VERTICAL ROOF
NOT TO SCALE



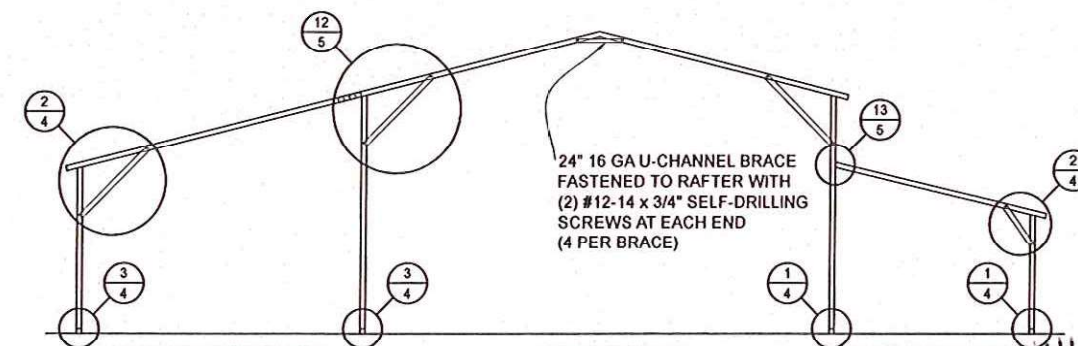
TYPICAL BOX EAVE RAFTER GABLE END FRAMING PLAN
NOT TO SCALE



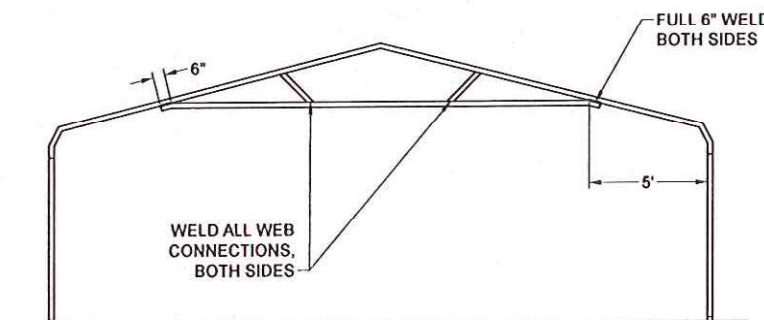
TYPICAL SIDE WALL OPENINGS FRAMING PLAN
NOT TO SCALE



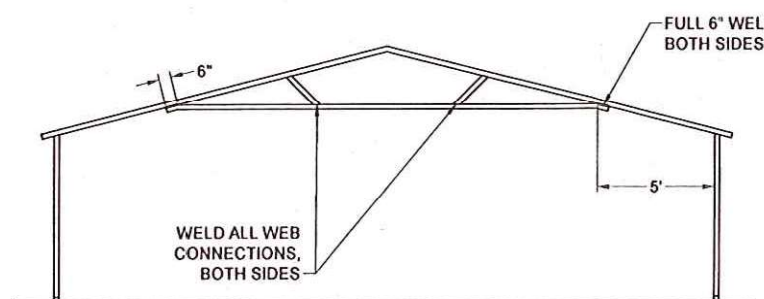
TYPICAL END WALL OPENINGS POST/RAFTER FRAMING PLAN
NOT TO SCALE



TYPICAL LEAN-TO OPTIONS FRAMING PLAN (BOTH OPTIONS SHOWN)
NOT TO SCALE (BOX EAVE RAFTER SHOWN, ONLY STANDARD LEAN-TO IS APPLICABLE TO BOW FRAME RAFTERS)

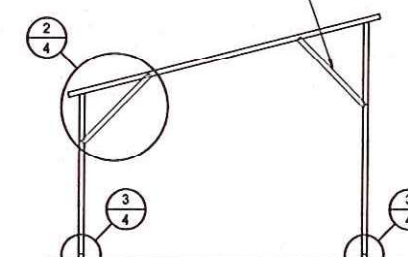


OPTIONAL 24'-1\"/>



OPTIONAL 24'-1\"/>

24\"/>



FREESTANDING LEAN-TO FRAMING PLAN
NOT TO SCALE

BECHTOL ENGINEERING AND TESTING, INC.
605 WEST NEW YORK AVENUE
DELAND, FLORIDA 32720

No. 00753

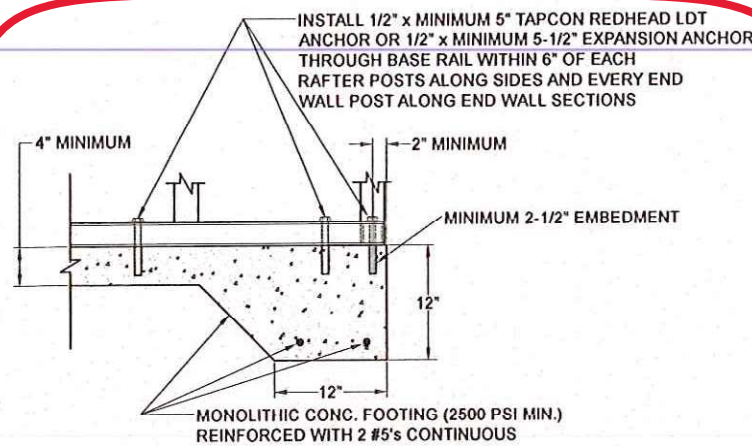
STATE OF FLORIDA

PROFESSIONAL ENGINEER

CAROLINA CARPORTS, INC.
GENERIC PLANS FOR USE IN THE STATE OF FLORIDA

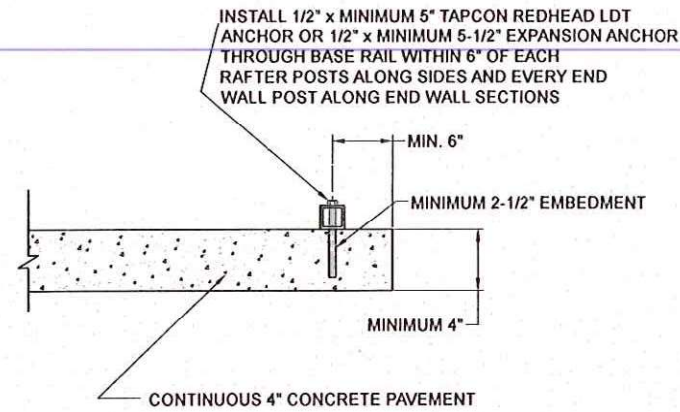
BECHTOL ENGINEERING AND TESTING, Inc.
CONSULTING GEOTECHNICAL, ENVIRONMENTAL, AND WATER RESOURCES TESTING ENGINEERS
Certificate of Authorization No. 0005492

FIELD	DATE	2/21/2023
DRAWN	MKB	SCALE NTS
CHECKED	TB/CS	PROJECT NO. G23001
APPROVED	TB/LP	SHEET 3 OF 6



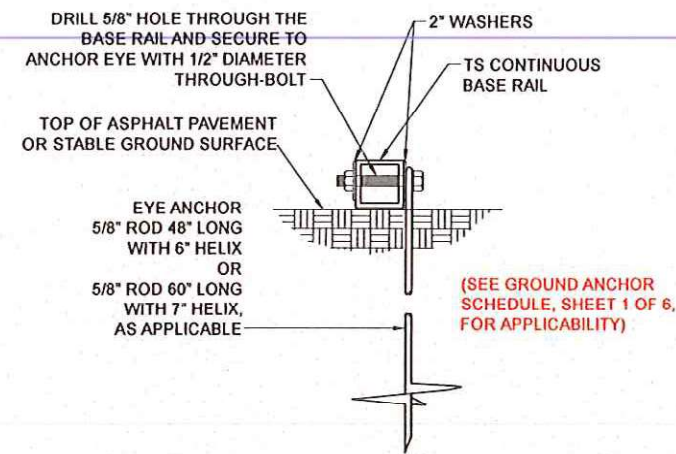
1A CONCRETE BASE RAIL ANCHORAGE

Not To Scale



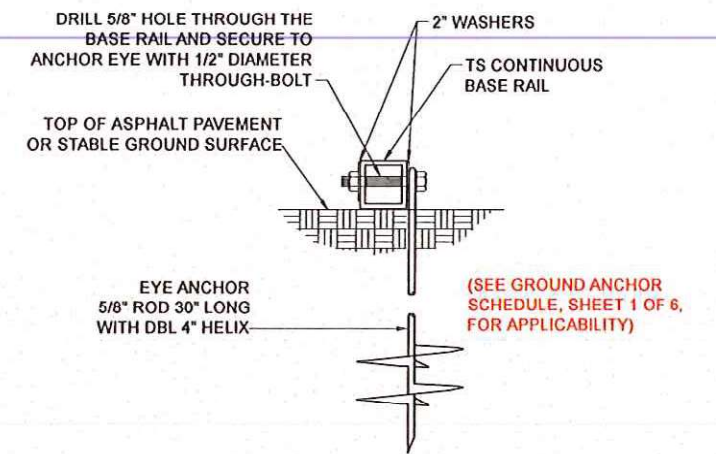
1B CONCRETE BASE RAIL ANCHORAGE

Not To Scale (OPTIONAL - OPEN CARPORTS ONLY)



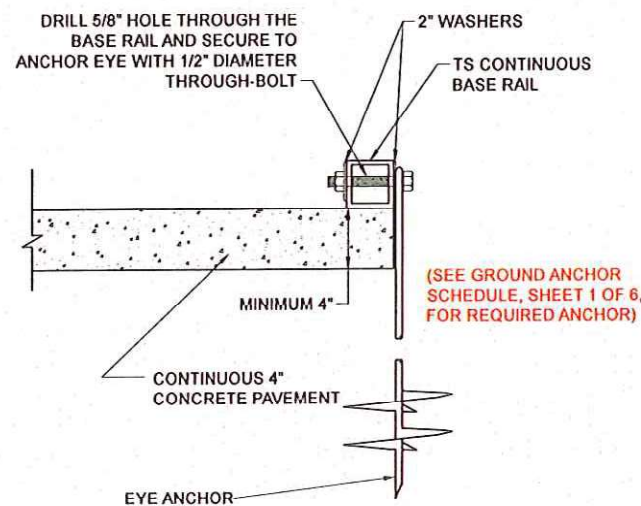
1C BASE RAIL DEEP ANCHORAGE

Not To Scale



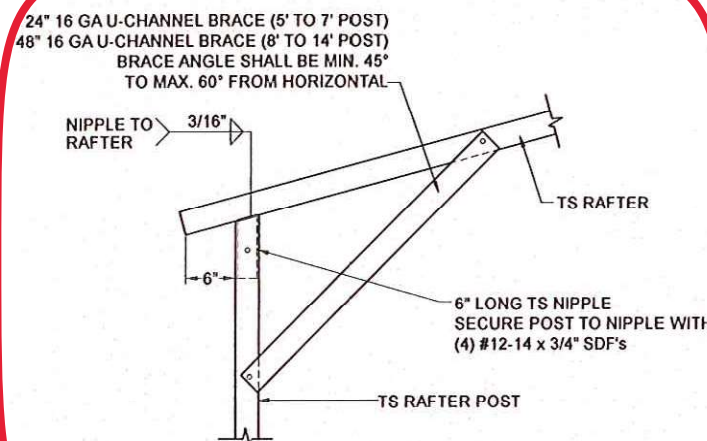
1D BASE RAIL ANCHORAGE

Not To Scale



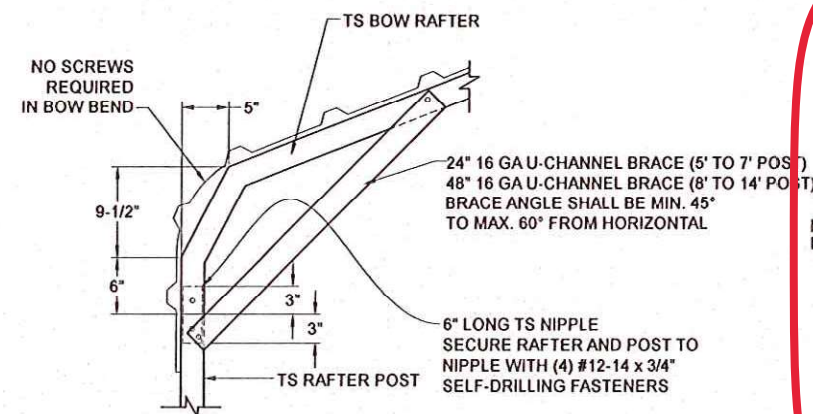
1E CONCRETE BASE RAIL ANCHORAGE

Not To Scale (OPEN CARPORTS WHERE SLAB EDGE DISTANCE DOES NOT MEET MINIMUM EDGE DISTANCE SHOWN IN DETAIL 1B)



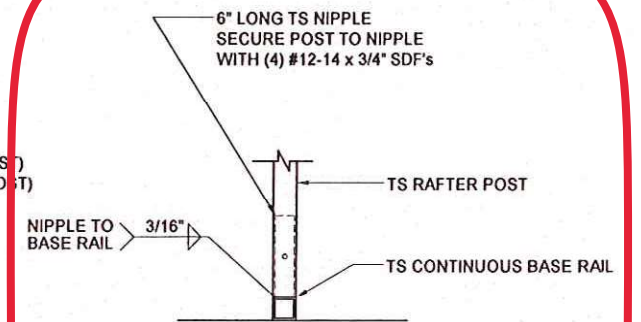
2A BOX EAVE RAFTER/POST DETAIL

Not To Scale



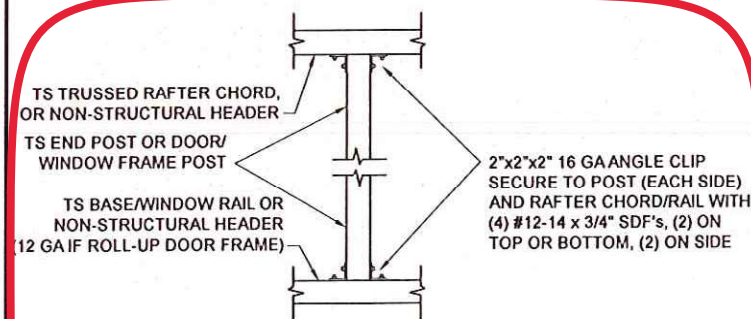
2B BOW RAFTER/POST DETAIL

Not To Scale



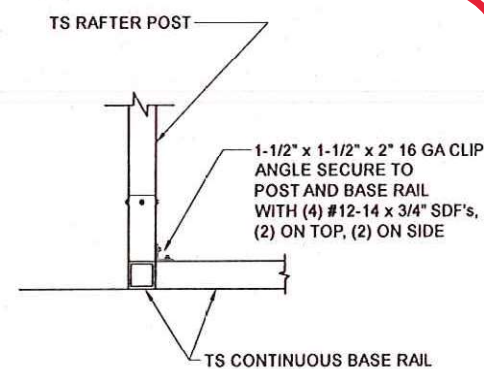
3 POST/BASE RAIL CONN. DETAIL

Not To Scale



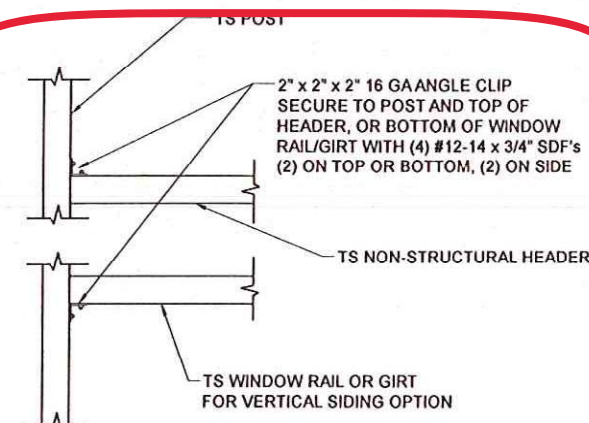
4 POST TO RAIL, TRUSS CHORD, OR NON-STRUCTURAL HEADER CONN. DETAIL

Not To Scale



5 END POST/BASE RAIL CONN.

Not To Scale



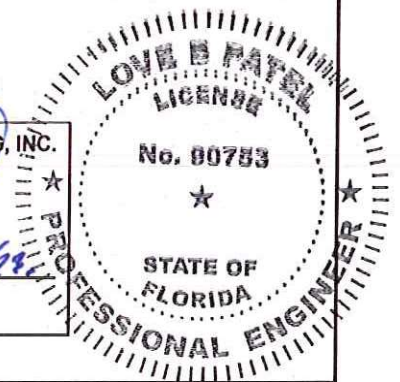
6 NON-STRUCTURAL HEADER, WINDOW RAIL, OR GIRT TO POST CONN. DETAIL

Not To Scale

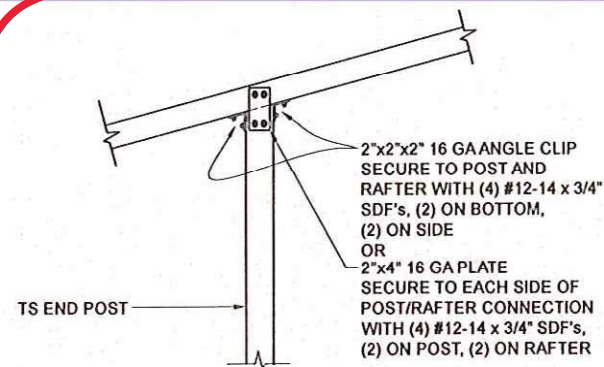
BECHTOL ENGINEERING AND TESTING, INC.
605 WEST NEW YORK AVENUE
DELAND, FLORIDA 32720

CAROLINA CARPORTS, INC.
GENERIC PLANS FOR USE IN THE STATE OF FLORIDA

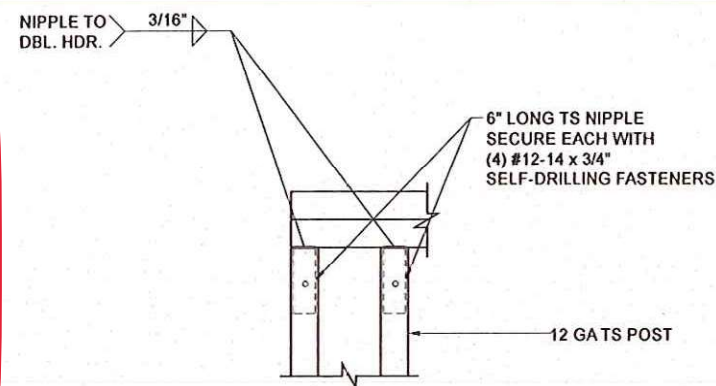
BECHTOL ENGINEERING AND TESTING, Inc.
CONSULTING GEOTECHNICAL, ENVIRONMENTAL, AND MATERIALS TESTING ENGINEERS
Certificate of Authorization No. 00055492



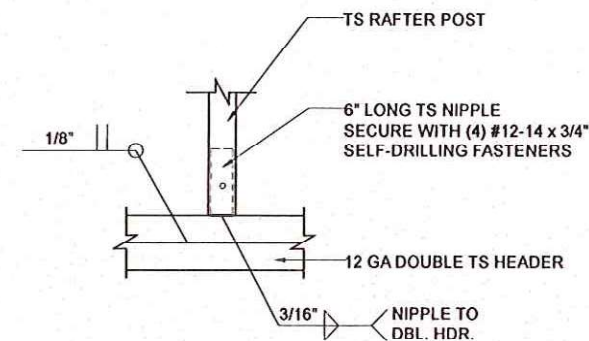
FIELD	DATE
DRAWN MKB	2/21/2023
CHECKED TB/CS	SCALE NTS
APPROVED TB/LP	PROJ NO: G23001
	SHEET 4 OF 6



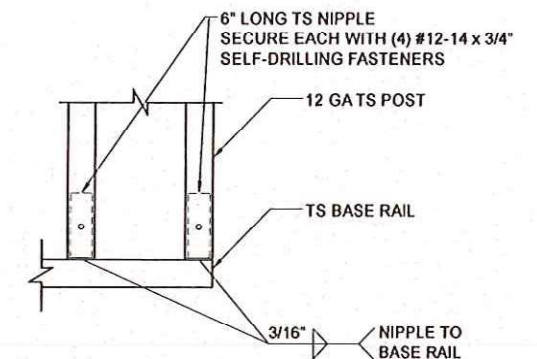
7 END POST/RAFTER CONN. DETAIL
Not To Scale



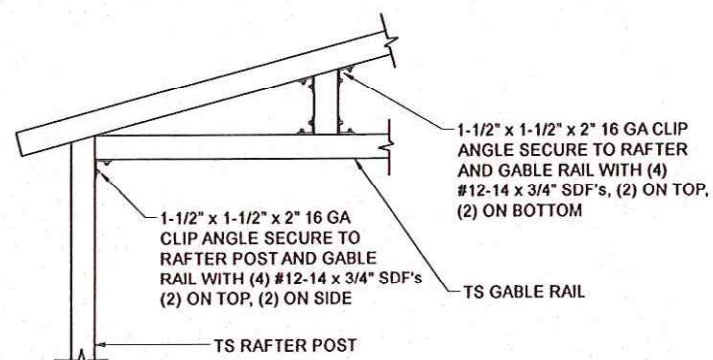
8 RAFTER POST/DBL. HEADER DETAIL
Not To Scale



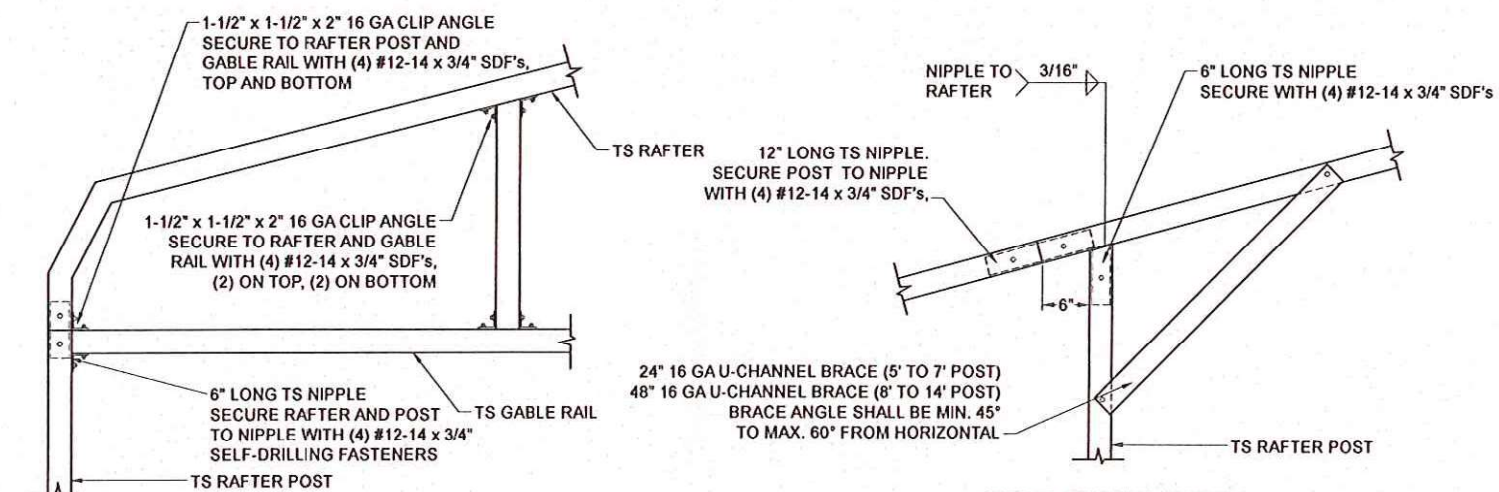
9 RAFTER POST/HEADER DETAIL
Not To Scale



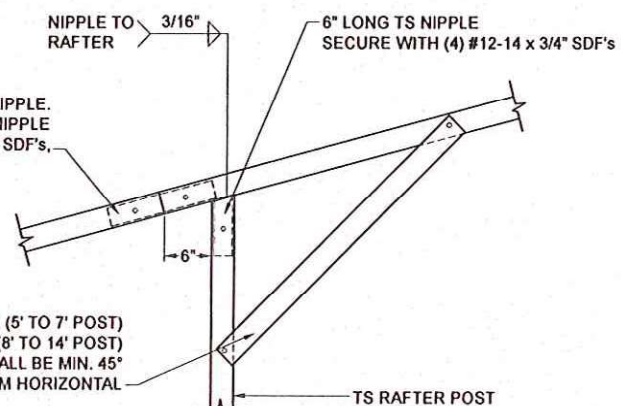
10 RAFTER POST/BASE
BASE RAIL CONNECTION DETAIL
Not To Scale



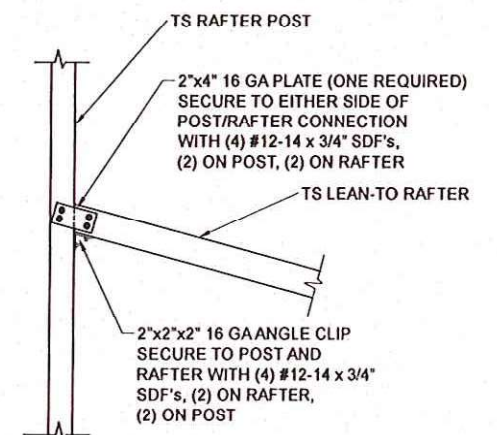
11A GABLE RAIL TO RAFTER POST
CONNECTION DETAIL
Not To Scale



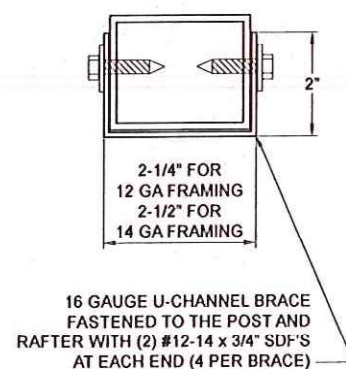
11B GABLE RAIL TO RAFTER POST
CONNECTION DETAIL
Not To Scale



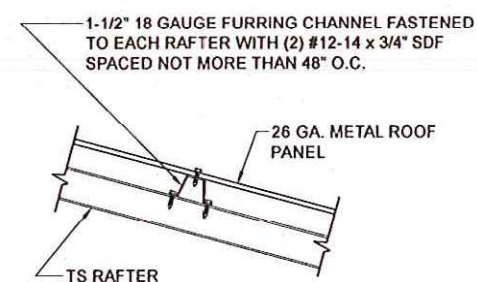
12 SIDE EXTENSION
RAFTER/POST DETAIL
Not To Scale



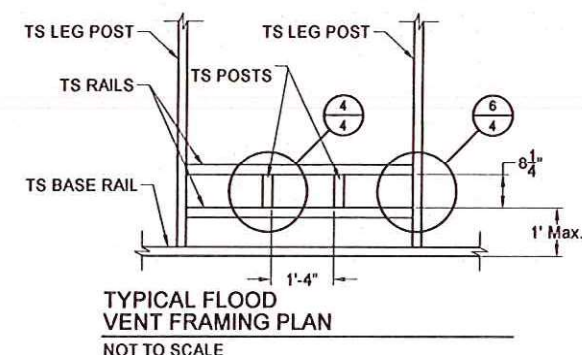
13 POST / LEAN-TO RAFTER CONN. DETAIL
Not To Scale



BRACE SECTION
Not To Scale

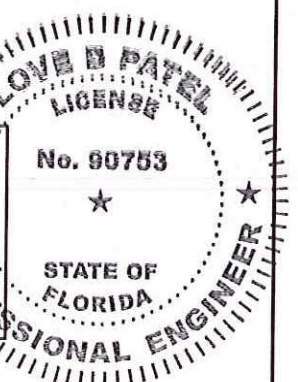


ROOF PANEL ATTACHMENT
(ALTERNATE FOR VERTICAL ROOF PANELS)
Not To Scale



SEE GENERAL NOTE No. 12, SHEET 1 OF 6.

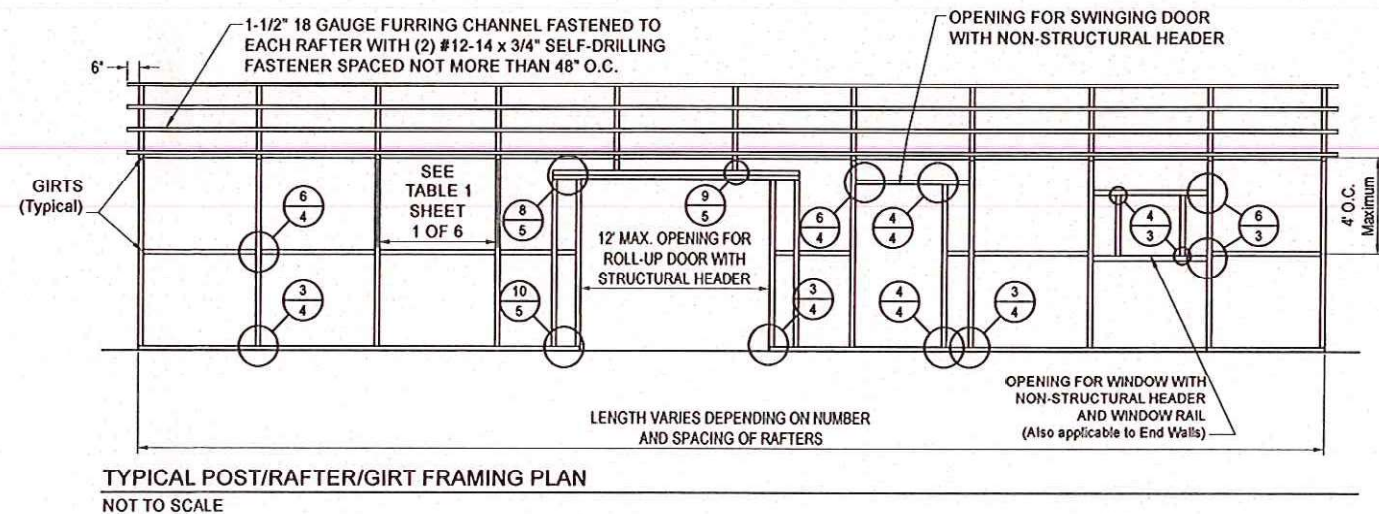
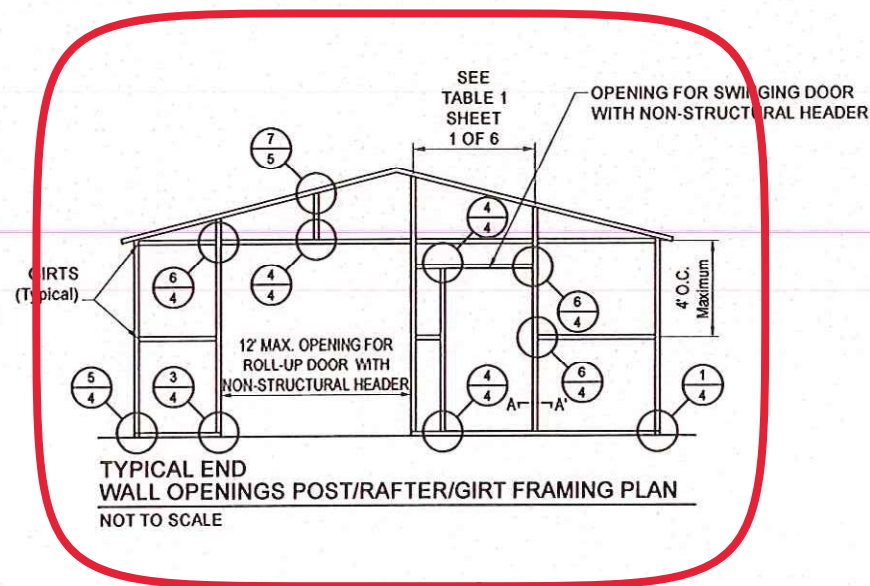
BECHTOL ENGINEERING AND TESTING, INC.
605 WEST NEW YORK AVENUE
DELAND, FLORIDA 32720



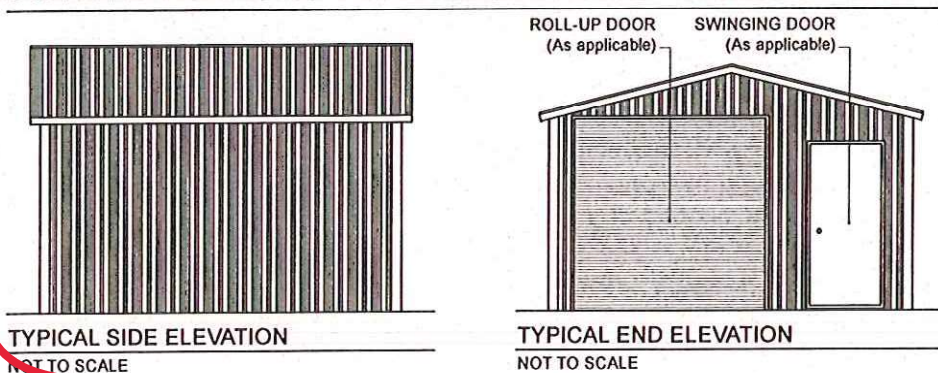
CAROLINA CARPORTS, INC.
GENERIC PLANS FOR USE IN THE STATE OF FLORIDA

 <div>BECHTOL ENGINEERING AND TESTING, Inc. <small>CONSULTING GEOTECHNICAL, ENVIRONMENTAL, AND MATERIALS TESTING ENGINEERS Certificate of Authorization No. 0005492</small></div>	FIELD	DATE	2/21/2023	
	DRAWN	MKB	SCALE	NTS
	CHECKED	TB / CS	PROJ NO.	G23001
	APPROVED	TR / LP		SHEET 5 OF 6

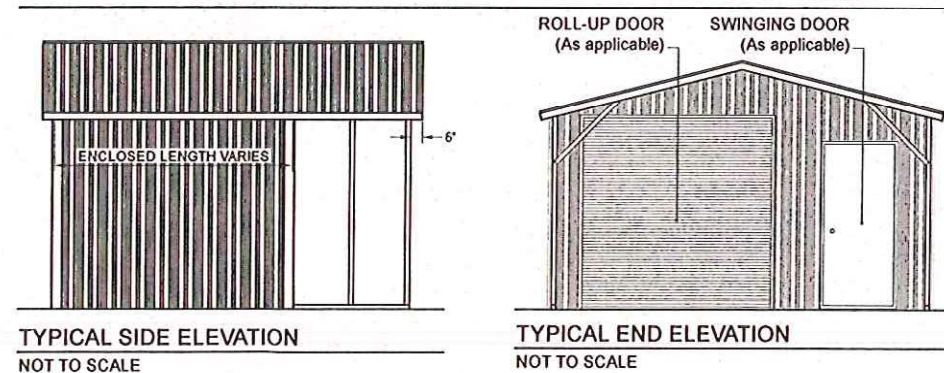
VERTICAL SIDE OPTION



BOX EAVE FRAME RAFTER ENCLOSED BLDG - VERTICAL SIDES



BOX EAVE FRAME RAFTER UTILITY BLDG - VERTICAL SIDES



BECHTOL ENGINEERING AND TESTING, INC.
605 WEST NEW YORK AVENUE
DELAND, FLORIDA 32720

No. 90753

STATE OF
FLORIDA

PROFESSIONAL ENGINEER

CAROLINA CARPORTS, INC.
GENERIC PLANS FOR USE IN THE STATE OF FLORIDA

BECHTOL ENGINEERING AND TESTING, Inc.
CONSULTING GEOTECHNICAL, ENVIRONMENTAL, AND MATERIALS TESTING ENGINEERS
Certificate of Authorization No. 00005492

FIELD	DATE
DRAWN MKB	2/21/2023
CHECKED TB/CS	SCALE NTS
APPROVED TB/LP	PROJ NO: G23001
	SHEET 6 OF 6