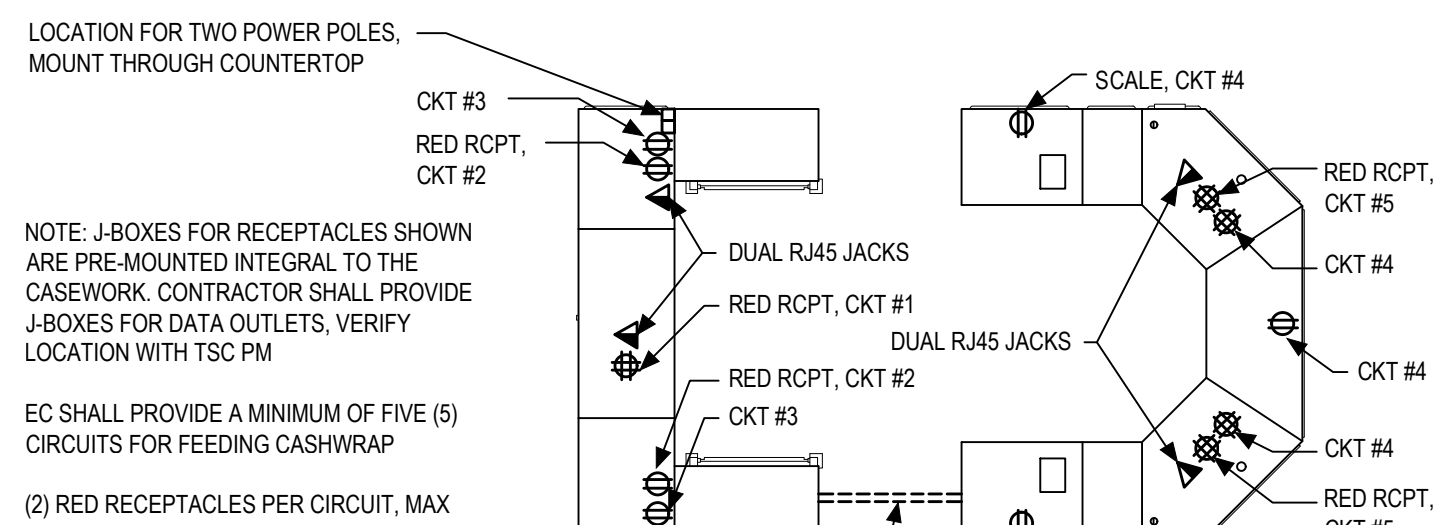
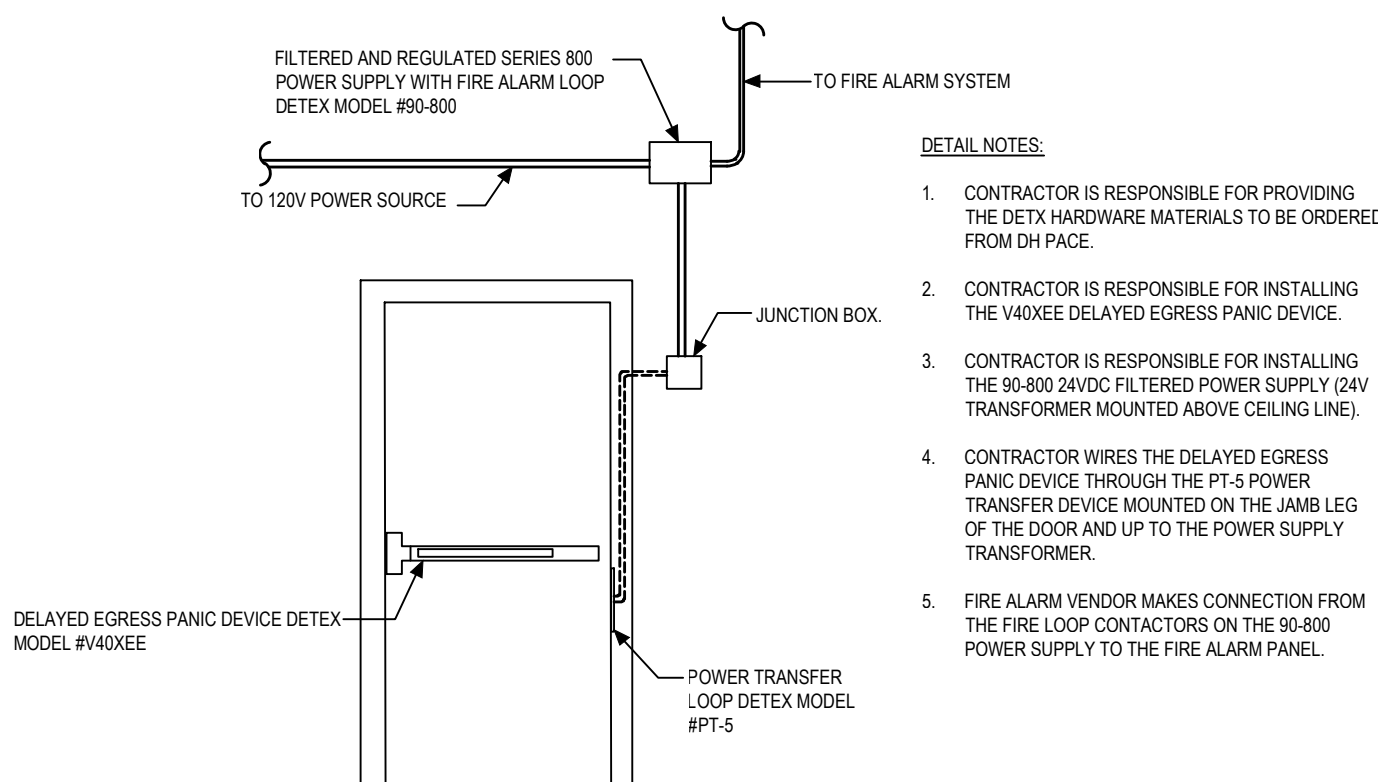


## 2 LIGHT BOX ELECTRICAL DROP DETAIL



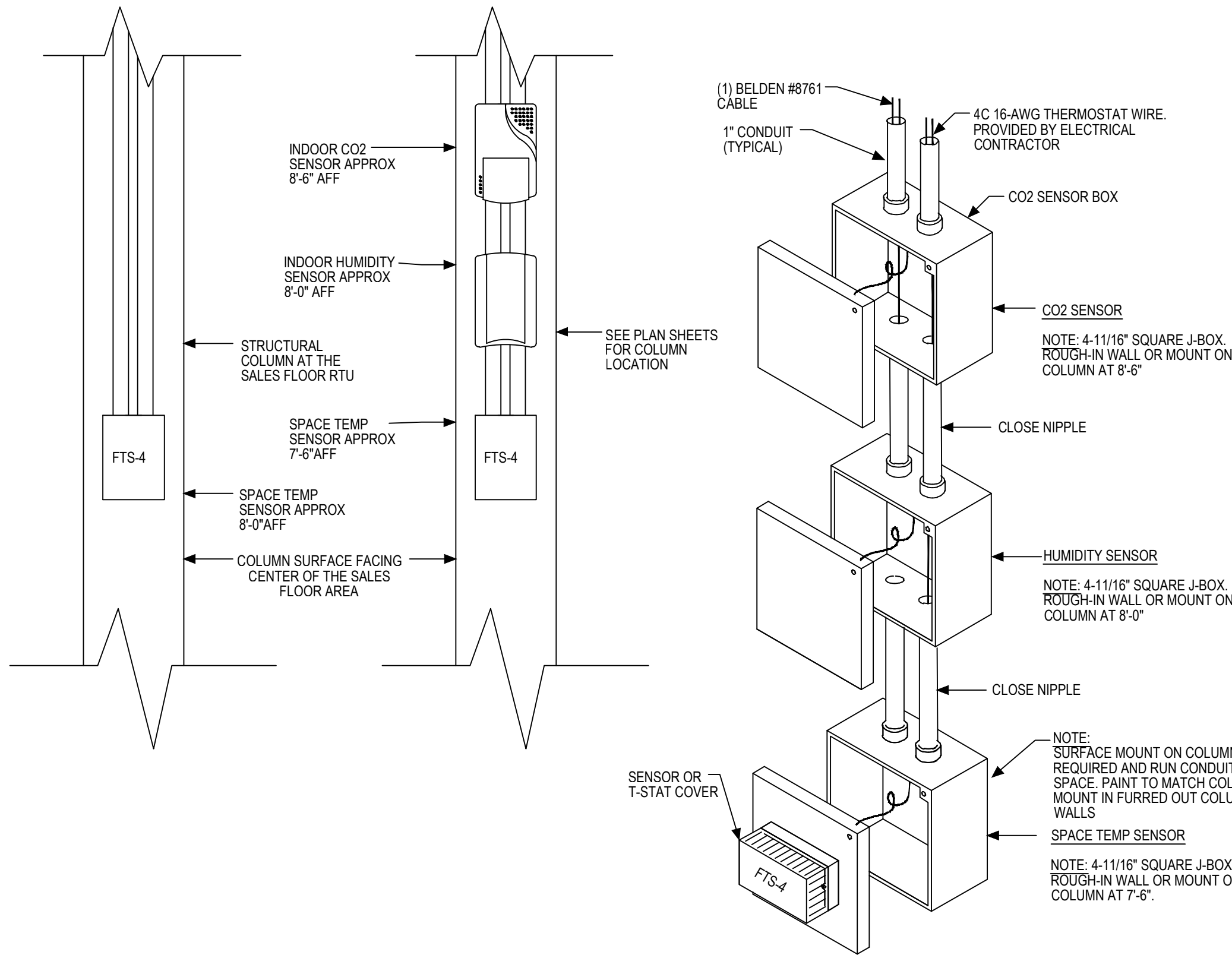
## 3 FUSION CASHWRAP DETAIL

NOTE: CIRCUIT NUMBERS ARE DIAGRAMMATIC. SEE DRAWING E2.0 FOR FURTHER INFORMATION



## 4 DETEX EXIT DEVICE DETAIL

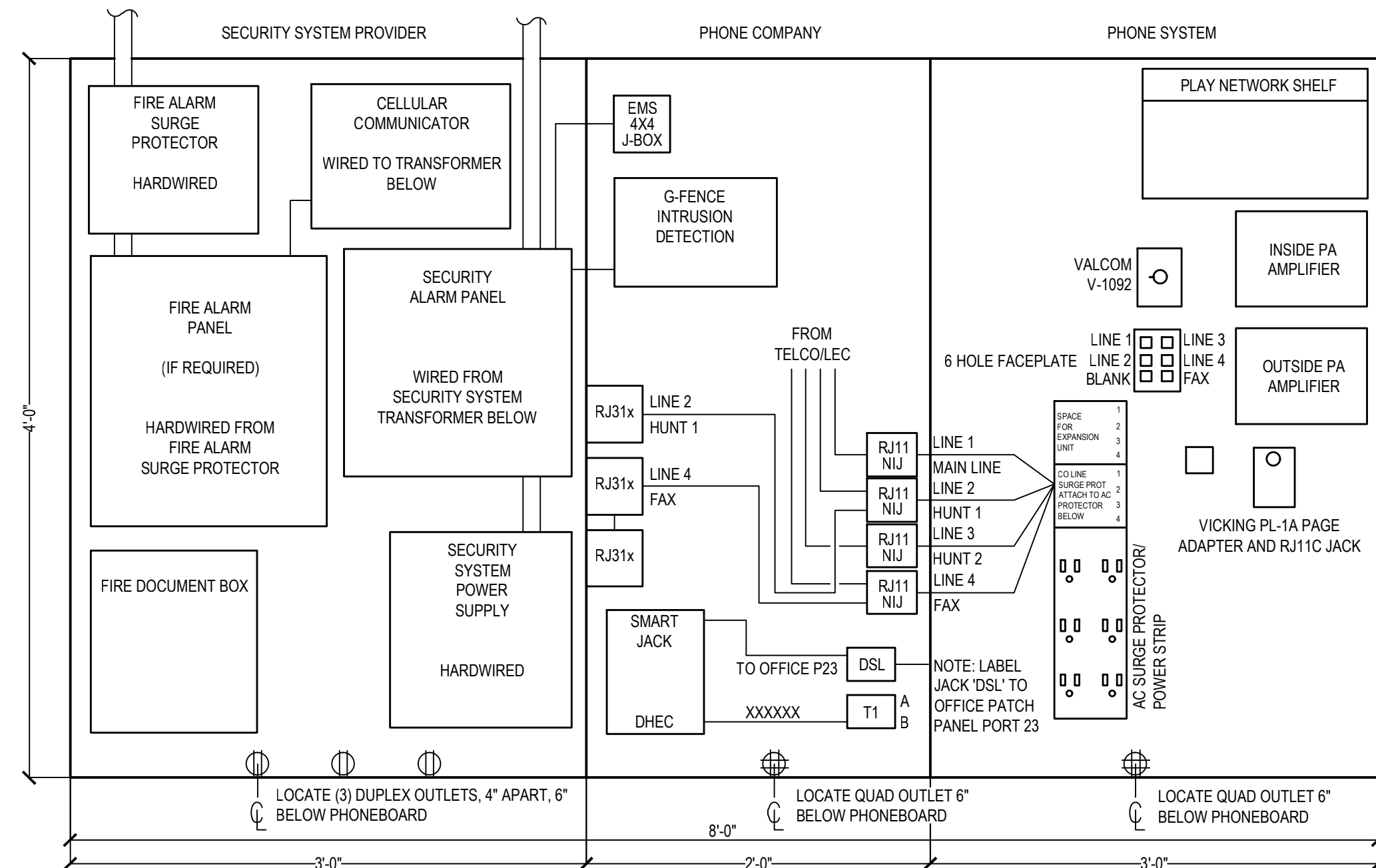
N.T.S.



## 5 SPACE TEMP SENSOR, HUMIDITY SENSOR, AND CO2 SENSOR DETAIL

N.T.S.

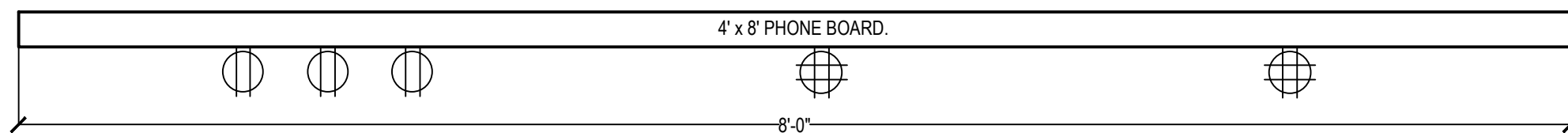
- NOTES:**
- ALL SENSORS ARE MOUNTED TO COLUMNS ON THE SALES FLOOR AND MUST BE AFFIXED TO THE SURFACE OF THE COLUMN THAT FACES THE CENTER OF THE SALES AREA. ALL SENSORS ARE INSTALLED BY EMS VENDOR.
  - CONTRACTOR SHALL INSTALL CONDUIT, BOXES, AND CONTROL CABLING AS SHOWN FOR FUTURE INSTALLATION OF SENSORS. MECHANICAL CONTRACTOR SHALL PROVIDE TEMPORARY T-STATS TO RUN THE UNITS PRIOR TO EMS INSTALLATION.
  - CONTRACTOR SHALL LABEL EACH SENSOR FOR RTU SERVED.



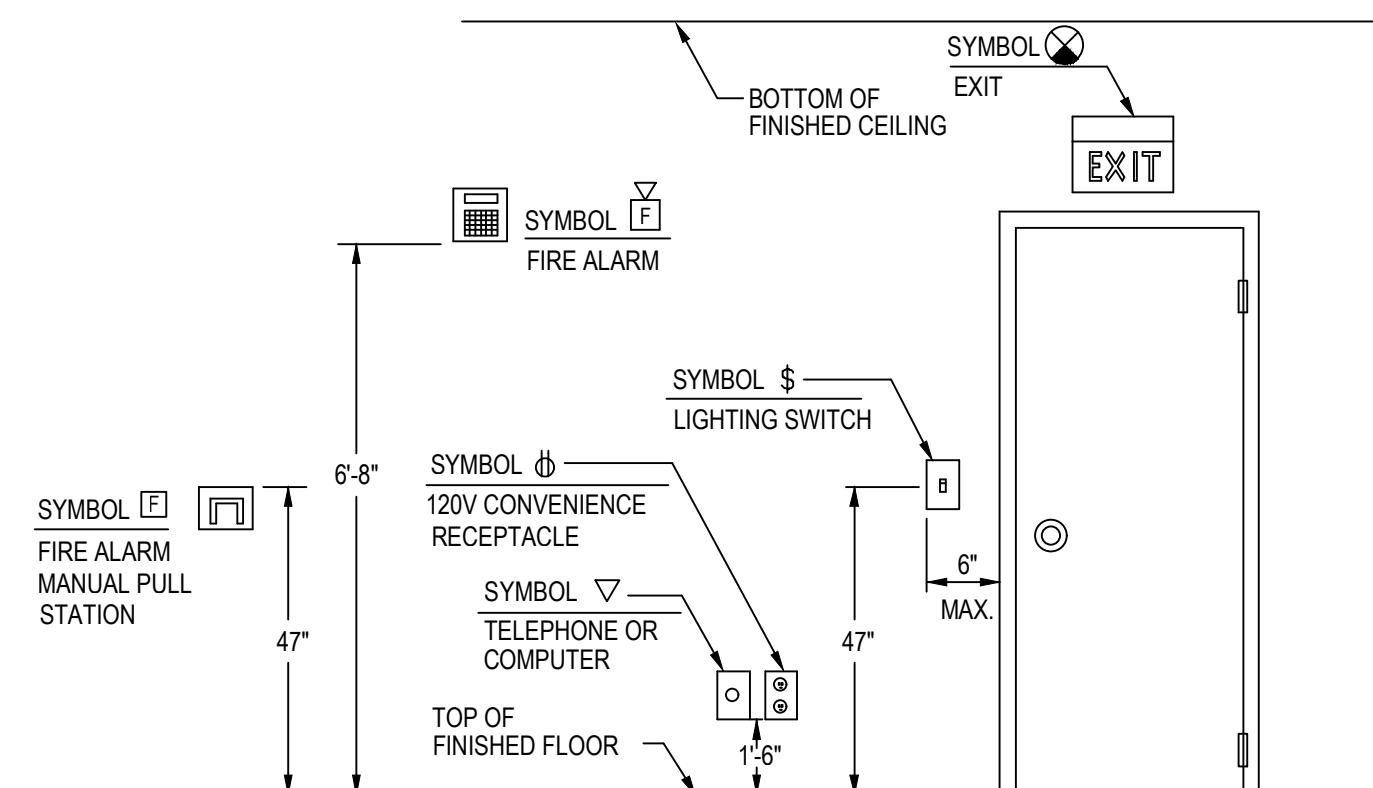
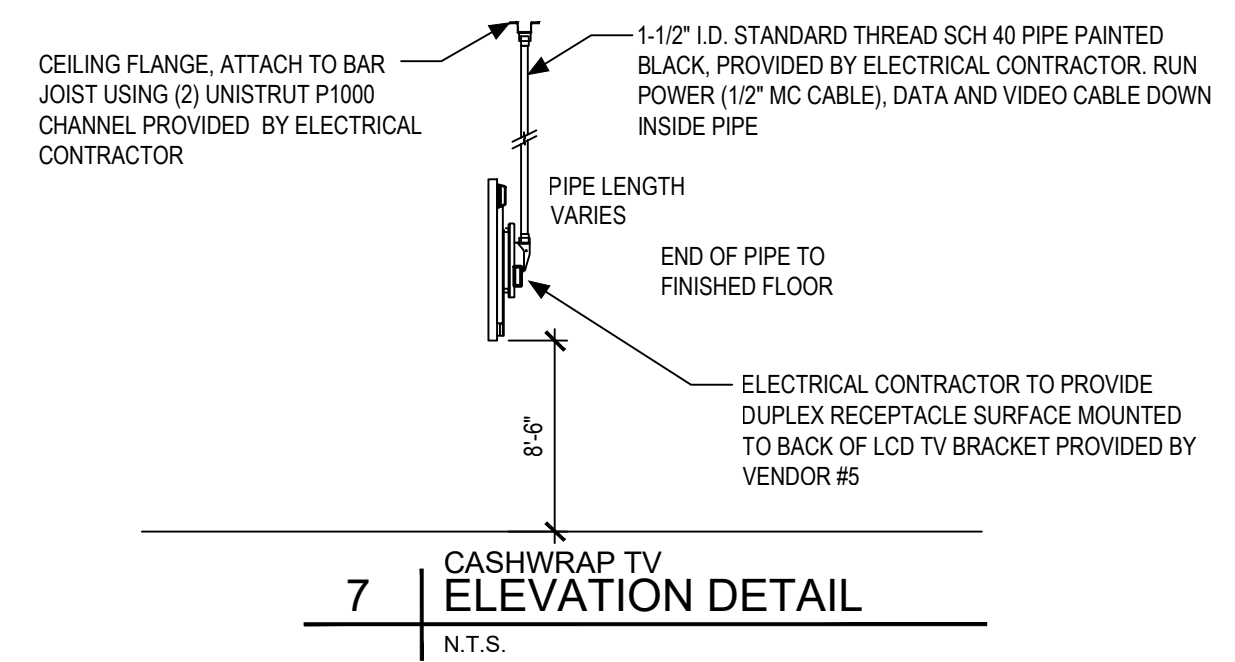
## 6 TELEPHONE BOARD DETAIL

N.T.S.

4" x 8" x 5/8" FIRE RETARDANT PLYWOOD PAINTED WHITE (ALWAYS HORIZONTAL) BOTTOM OF PHONE BOARD DIAGRAM TO BE MOUNTED @ 2'-6" A.F.F.  
GENERAL CONTRACTOR TO ACQUIRE MOST CURRENT PHONE BOARD TEMPLATE FROM PLAN EXPRESS TO ENSURE THE MOST UP TO DATE VERSION IS USED.



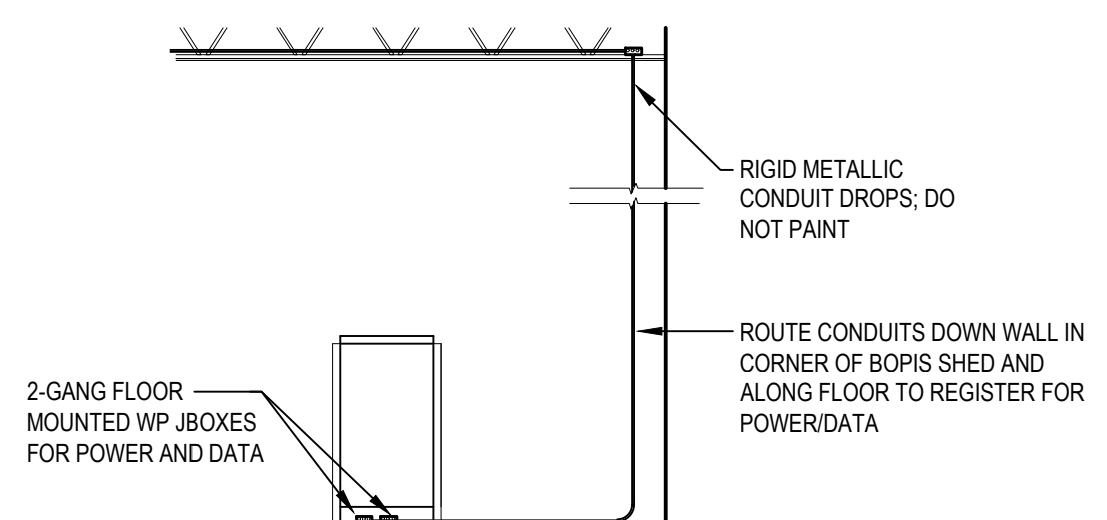
SEE SHEET E2.1 FOR PROPER LOCATION



## 8 TYPICAL DEVICE MOUNTING HEIGHT

N.T.S.

NOTE: VERIFY HEIGHTS SHOWN COMPLY WITH LOCAL BUILDING CODE.



## 9 GARDEN CENTER REGISTER ELECTRICAL DROP

N.T.S.

## POWER MATRIX

LOCATION	COMPUTER OUTLETS			OTHER OUTLETS		
	RED	DEDICATED	DUPLEX	QUAD	120V DUPLEX	QUAD RED DEDICATED
SERVICE COUNTER	X	X	X	X	X	X
REGISTER	X	X	X	X	X	X
RECEIVING	X	X	X	X	X	X
PHONE/PA	X	X	X	X	X	X
FIRE ALARM/SECURITY	X	X	X	X	X	X

ALL RED DEDICATED OUTLETS FOR THE COMPUTERS CAN BE ON ONE CIRCUIT. CASH REGISTERS ARE ALL RUN THROUGH POWER POLES. ALL OUTLETS SHALL BE MOUNTED UNDER THE COUNTER TOP TO THE BACK OF THE COUNTER. PHONE BOARD SHALL BE A 4'x8' AREA LAID OUT ON THE PLYWOOD WALL OR ON A PIECE OF PLYWOOD. OUTLETS CAN BE SURFACED MOUNTED BUT CONDUIT MUST BE RUN DOWN THE EDGES OF EACH SECTION. THE 120V DUPLEX IS A CONVENIENCE OUTLET RUN FROM ANY NON-DEDICATED CIRCUIT. EACH OUTLET SHALL BE CLEARLY LABELED "DEDICATED CPE", "DEDICATED TSC ALARMS" OR "CONVENIENCE OUTLET". ALL OUTLETS THAT ARE MOUNTED WITHIN 6 FEET OF SINK SHALL BE GFI.

PROVIDE 3 DUPLEX RECEPTABLES AT THE ALARM/SECURITY SECTION OF THE TELEPHONE BOARD. MOUNT 4" APART MINIMUM, 6" BELOW THE TELEPHONE BOARD FOR CORD AND PLUG CONNECTIONS TO THE VENDOR SUPPLIED SECURITY SYSTEM EQUIPMENT. ALL THREE RECEPTABLES SHALL BE POWERED FROM ONE 120 VOLT DEDICATED CIRCUIT. PROVIDE TWO SURFACE MOUNTED JUNCTION BOXES ADJACENT TO THE DEDICATED DUPLEX RECEPTABLES FOR HARDWIRED POWER CONNECTIONS TO THE FIRE ALARM EQUIPMENT PANEL, DUCT MONITOR AND THE TWO FIRE ALARM SYSTEM POWER SUPPLIES. CONTRACTOR SHALL WIRE FROM THE JUNCTION BOXES WITH TYPE MC CABLE. CONNECT TWO DEVICES TO ONE JUNCTION BOX.

ALARM/SECURITY	LEC	CPE
3	2	3
(3) DEDICATED DUPLEXES	DEDICATED QUAD	DEDICATED QUAD

