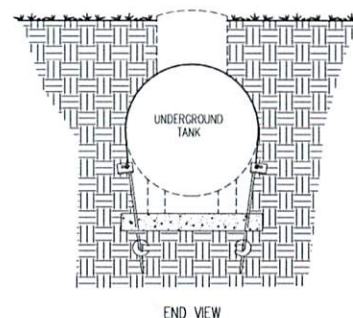


1. EARTH AUGERS TO BE 48" IN LENGTH w/ 6" DIA. HELIX (TIE-DOWN ENGINEERING M12H5/8) w/ A MIN. WORKING LOAD OF 3150 LBS. STRAPS TO BE EITHER 1/4" Ø COATED CABLE OR GALVANIZED STEEL CL. B GRADE 1 MIN. TENSILE 4750 LBS. (OPTIONAL ANCHOR TIE-DOWN WITH 5/8" ANCHOR BOLTS.)

3. DESIGNS FOR USE IN ALL "A" & "V" ZONES. VULT = 153 MPH. VASD = 121 MPH, RISK GROUP I, II, III & IV & WIND EXPOSURE D.



1 UNDERGROUND TANK DETAIL
N.T.S. 250 gal.

Digitally signed
by Pierre M Valles
Date: 2018.01.22
22:43:57 -05'00'

MASTER SET PLAN	PROJECT#		DATE 12/01/2017	SHEET NO.
			DRAWN BY G.E.	1
			REVISED -	
ADDRESS:	CITY:	STATE: FL	SCALE AS NOTED	OF

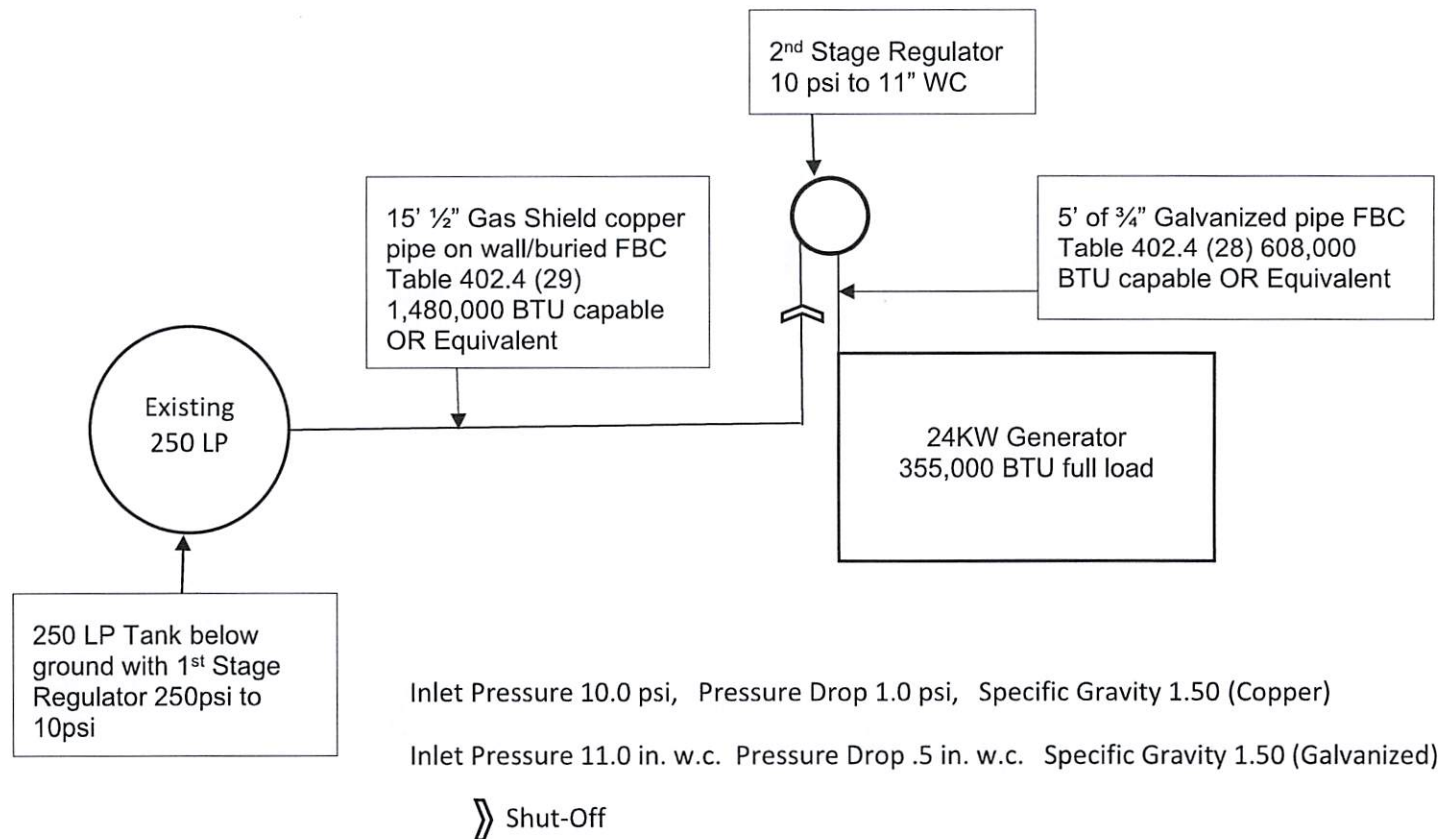
GENERX
GENERATORS

Cole Hoerner Reg# LI45057
10949 SW 93rd Terrace
Ocala, FL 34481
727-294-3241
August 16, 2022

Customer: Marsha & Gary Powers
8957 SW Tustenuggee Avenue
Lady Lake, FL 32024

Cole Hoerner

Florida Building Code – 7th Edition (2020)



Installing and Connecting Fuel Lines



⚠ DANGER

Explosion and fire. Fuel and vapors are extremely flammable and explosive. No leakage of fuel is permitted. Keep fire and spark away. Failure to do so will result in death or serious injury. (000192)

IMPORTANT NOTE: NG and LP gas are highly volatile substances. Strictly adhere to all safety procedures, codes, standards, and regulations.

Fuel line connections should be made by a certified contractor familiar with local codes. Always use AGA-approved gas pipe and a quality pipe sealant or joint compound.

Verify capacity of NG meter or LP tank to provide sufficient fuel for both the generator and other operating appliances.

Fuel Shutoff Valve

See *Figure 5-2*. The generator will require an external manual fuel shutoff valve (A) on the fuel line.

NOTE: Fuel shutoff valve must be installed at a readily accessible location, and within 6 ft (1.8 m) of generator fuel inlet.

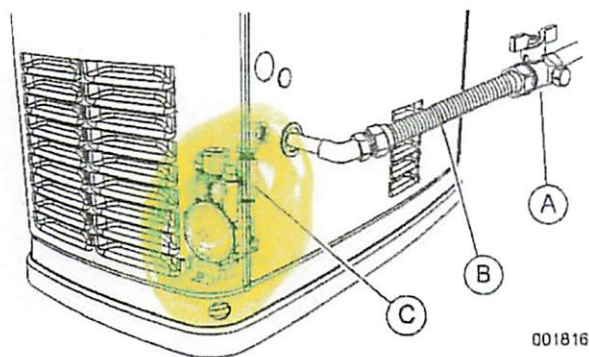


Figure 5-2. Sediment Trap, Fuel Shutoff Valve with Manometer Port, and Flexible Fuel Line

Figure 5-3 illustrates a fuel shutoff valve with a manometer port for making fuel pressure checks. This optional accessory fuel shutoff valve permits making pressure checks for diagnostic purposes without going into the generator enclosure.

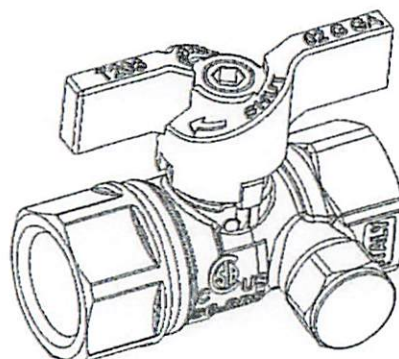


Figure 5-3. Fuel Shutoff Valve with Manometer Port

Fuel shutoff valves available through a local IASD:

- 1/2 in ball valve, part number 0K8752
- 3/4 in ball valve, part number 0K8754
- 1 in ball valve, part number 0K8184
- 1-1/4 in ball valve, part number 0L2844
- 1-1/2 in ball valve, part number 0L2845

Flexible Fuel Line

See *Figure 5-2*. When connecting flexible fuel line (B) to generator, use a listed assembly meeting the requirements of ANSI Z21.75/ CSA 6.27—Connectors for Outdoor Gas Appliances and Manufactured Homes or AGA-approved flexible fuel line in accordance with local regulations.

Flexible fuel line must not be connected directly to generator fuel inlet. Always connect flexible fuel line to an approved gas fitting.

The purpose of flexible fuel line is to isolate vibration from the generator to reduce possibility of a gas leak at one of the connection points.

NOTE: Follow all installation instructions and warnings provided with the flexible fuel line. Do not remove any labels or tags. Flexible fuel line must be installed horizontally, and must be installed between fuel shutoff valve and generator fuel inlet.

Sediment Trap

See *Figure 5-2*. Some local codes require a sediment trap (C). The fuel regulator connection has an integrated sediment trap.

The sediment trap must be cleaned periodically according to local codes. See owner's manual for more information.