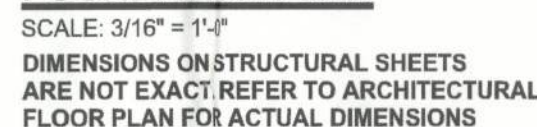
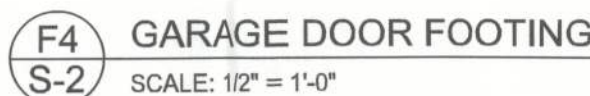


The table assumes 60 ksi reinforcing bars with 6" hook in the footing and bent 24" into the reinforced slab at the top. The vertical steel is to be placed toward the tension side of the CMU wall (away from the soil pressure, within 2" of the exterior side of the wall). If the wall is over 8' high, add Duowall ladder reinforcement at 16"OC vertically or a horizontal bond beam with 1#5 continuous at mid height. For higher parts of the wall 12" CMU may be used with reinforcement as shown in the table below.

**F2** INTERIOR BEARING FOOTING  
**S-2** SCALE: 1/2" = 1'-0"



**SEE ARCHITECTURAL FOUNDATION  
FOR ADDITIONAL NON – STRUCTURAL REQUIREMENTS  
LIKE STEP DOWNS, SHOWER RECESS, ECT.**

**SOFTPLAN**  
ARCHITECTURAL DESIGN SOFTWARE

MARK DISOSWAY  
P.E. 53915  
No. 53915  
STATE OF FLORIDA  
January 31, 2012

OF 3 SHEETS