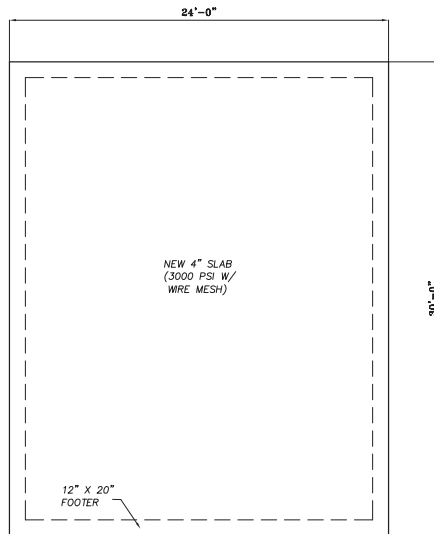
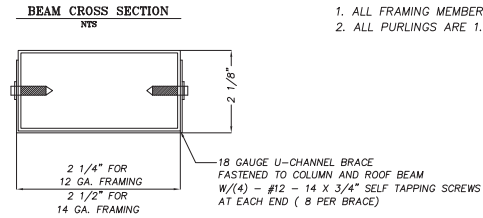
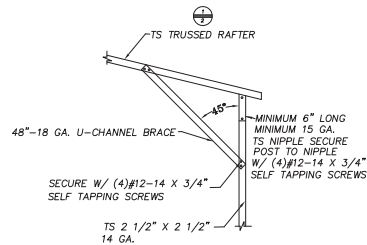
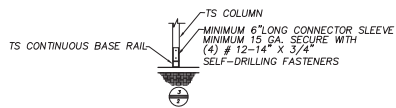
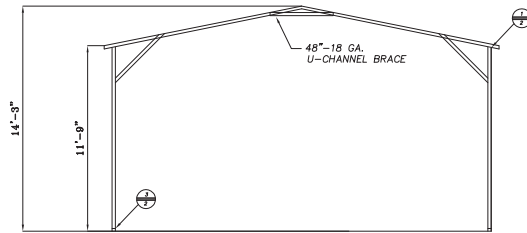


24' X 30' BUILDING

NOTES:

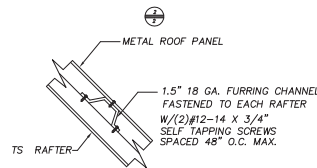
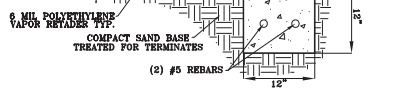
1. ALL FRAMING MEMBERS ARE 2.5" X 2.5" - 14 GA. TS U.N.O.
2. ALL PURLINGS ARE 1.5" - 18 GA. HAT CHANNELS



CONCRETE MONO SLAB BASE RAIL ANCHORAGE
NOT TO SCALE

INSTALL 1/2" X 6" WEDGE ANCHOR
TROUGH BASE RAIL WITHIN 6"
OF EACH RAFTER POST ALONG SIDES

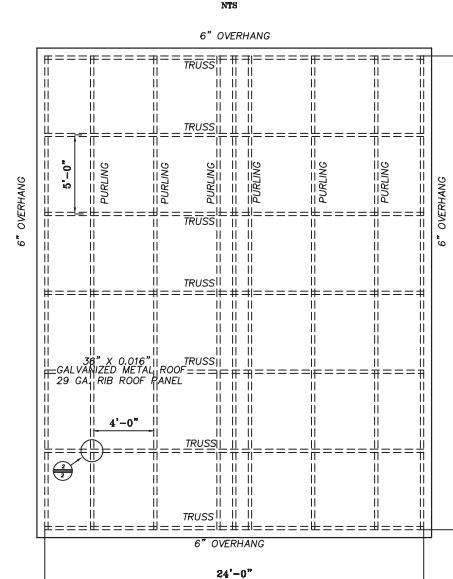
X=4" FOR NON-HABITABLE STR.
X=6" FOR HABITABLE STR.



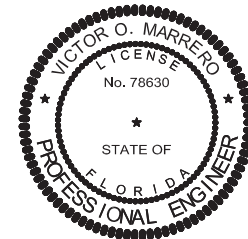
GENERAL NOTES:

- CONCRETE**
CONCRETE SHALL HAVE A MINIMUM SPECIFIED COMPRESSIVE STRENGTH OF 3000 PSI AT 28 DAYS
COVER OVER REINFORCING STEEL
- FOR FOUNDATIONS: MINIMUM CONCRETE COVER OVER REINFORCING BARS SHALL BE PER ACI 318
3 INCHES IN FOUNDATION WHERE THE CONCRETE IS IN CONTACT WITH EARTH, OR EXPOSED TO THE EARTH
OR WEATHER, AND 1 1/2 INCHES ELSEWHERE.
- REINFORCING STEEL**
THE TURNDOWN REINFORCING STEEL SHALL BE ASTM A615 GRADE 60.
SLAB REINFORCEMENT SHALL BE WELDED WIRE FABRIC MEETING ASTM A 185 / OR FIBERGLASS FIBER REINFORCEMENT
- REINFORCEMENT MAY BE BENT IN SHOP OR THE FIELD IF:**
1. REINFORCEMENT IS BENT COLD
2. THE DIAMETER OF THE BEND, MEASURED ON THE INSIDE OF THE BAR, IS NOT LESS THAN SIX-BAR DIAMETERS
3. REINFORCEMENT PARTIALLY EMBEDDED IN CONCRETE SHALL NOT BE FIELD BENT.

ROOF PLAN



AFFINE ENGINEERING
AND SURVEYING, INC.
CERTIFICATE OF
AUTHORIZATION No. 29140



VICTOR O. MARRERO
FLORIDA P.E. # 78630

Digitally signed
by Victor O
Marrero
Date: 2023.08.23
22:48:20 -04'00'

PREPARED FOR:
JAVIER LEAL
LAKE CITY, FLORIDA
COLUMBIA COUNTY

DRAWING
23-013
SHEET
2

AFFINE ENGINEERING AND SURVEYING, INC
CIVIL ENGINEERS
SURVEYORS
158 NW GREEN LANE, LAKE CITY, FLORIDA 33066
CERTIFICATE OF AUTHORIZATION No. 29140

REV	DATE	BY	REVISIONS
1	8/7/23	JM	ISSUED FOR PERMIT
2			
3			
4			
5			
6			
7			
8			
9			
10			