

DOOR & WINDOW BUCK ATTACHMENT

TAPCON IN FACE OF CMU
2 1/2" MIN. EDGE DISTANCE
1 1/4" MIN. EMBEDMENT
3" MIN. SPACING

WINDOWS & DOORS UP TO 6'X8'

3/16" TAPCONS @ 2' O.C.
1/4" TAPCONS @ 3' O.C.

WINDOWS & DOORS UP TO 8'X12'

3/16" TAPCONS @ 16" O.C.
1/4" TAPCONS @ 24" O.C.

SLIDERS UP TO 8'X42" W

3/16" TAPCONS @ 12" O.C.
1/4" TAPCONS @ 24" O.C.

GARAGE DOOR UP TO 10' W

(2) 3/16" TAPCONS & 16" O.C.
1/4" TAPCONS & 24" O.C.

GARAGE DOOR UP TO 18' W

(2) 3/16" TAPCONS & 8" O.C.
(2) 1/4" TAPCONS & 12" O.C.

EXTERIOR WALL STUD TABLE FOR SPF #2 STUDS

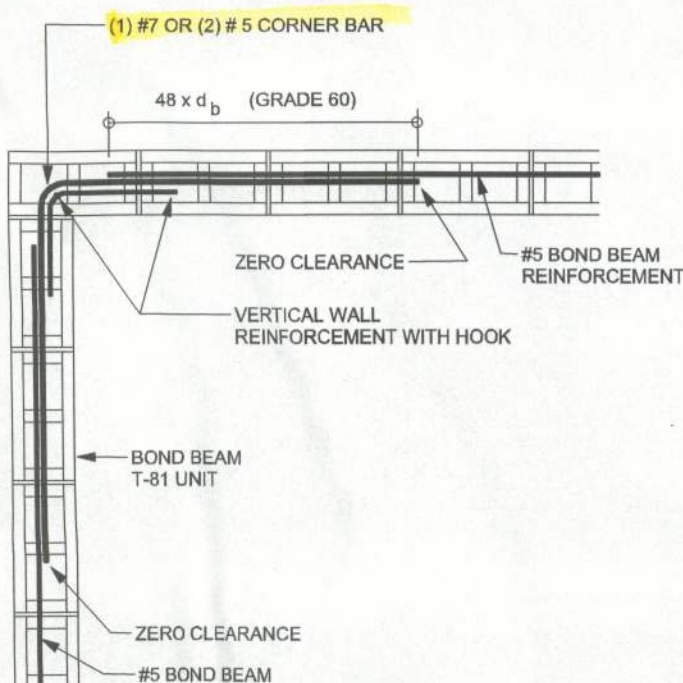
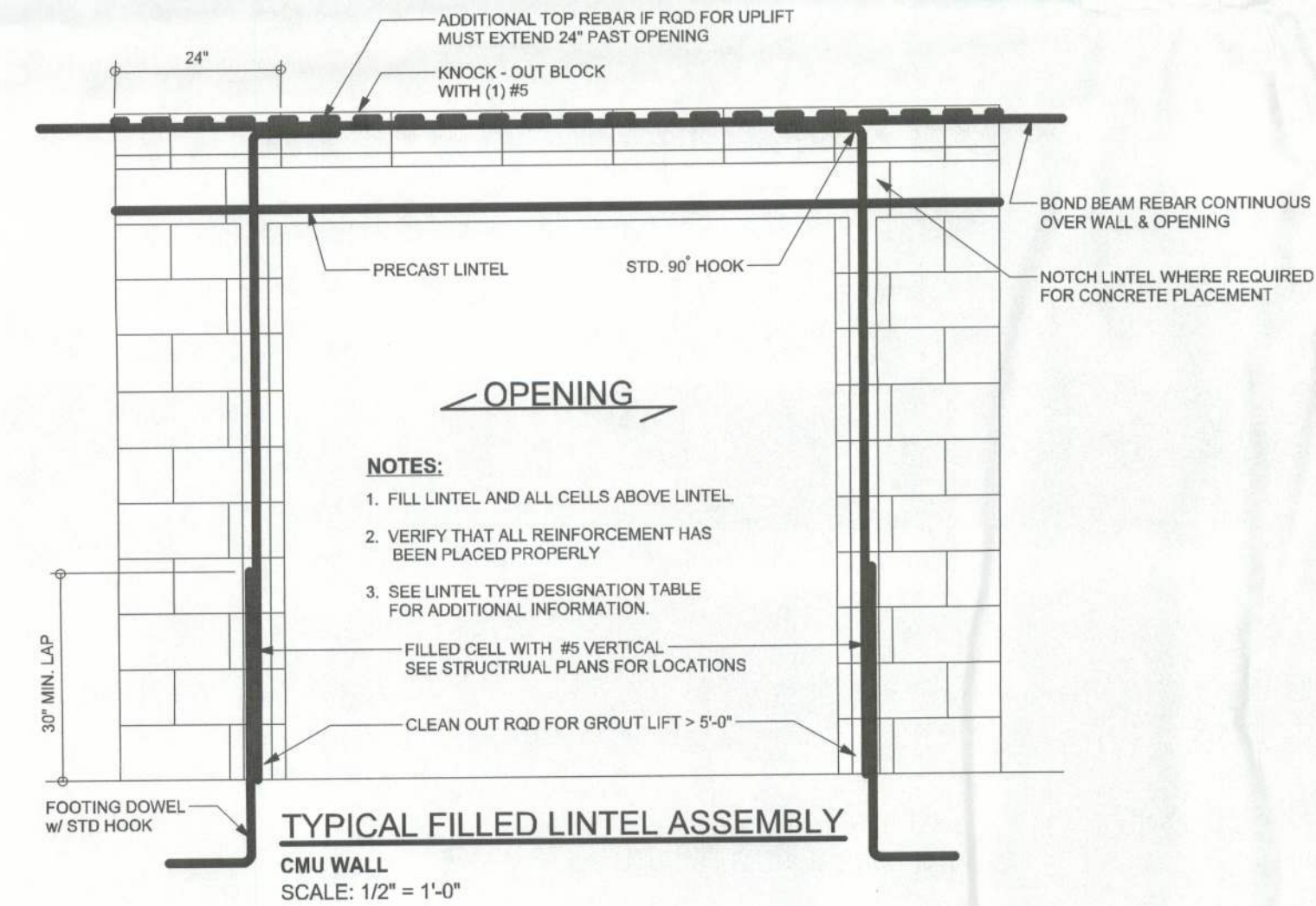
(1) 2x4 @ 16" OC	TO 10'-0" WALL HEIGHT
(1) 2x4 @ 12" OC	TO 13'-0" WALL HEIGHT
(1) 2x6 @ 16" OC	TO 18'-0" WALL HEIGHT
(1) 2x6 @ 12" OC	TO 20'-0" WALL HEIGHT

GRADE & SPECIES TABLE

		Fb (psi)	E (10 ⁶ psi)
2x8	SYP #2	1200	1.6
2x10	SYP #2	1050	1.6
2x12	SYP #2	975	1.6
GLB	24F-V3 SP	2400	1.8
LSL	TIMBERSTRAND	1700	1.7
LVL	MICROLAM	2900	2.0
PSL	PARALAM	2900	2.0

EXTERIOR WALL A-A

ONE STORY CMU
SCALE: 1/2" = 1'-0"



TYPICAL BOND BEAM CORNER
CMU
SCALE: 1/2" = 1'-0"

SAFE GRAVITY LOADS FOR 8" PRECAST & PRESTRESSED U-LINTELS											
LENGTH	TYPE	SAFE LOAD - POUNDS PER LINEAR FOOT									
		RUB	8F8-08	8F12-08	8F16-08	8F20-08	8F24-08	8F28-08	8F32-08	8F36-08	8F40-08
2'-0" (34") PRECAST	2231		3069	4605	6113	7547	8974	10394	11809		
3'-6" (42") PRECAST	2231		3069	3719	5163	6607	8054	9502	10951		
4'-0" (48") PRECAST	1966		2561	2751	3620	4890	5961	7034	8107		
4'-6" (54") PRECAST	1599		2093	2100	2831	3753	4576	5400	6224		
5'-4" (64") PRECAST	1217		1349	1438	1999	2560	3123	3686	4249		
5'-10" (70") PRECAST	1062		1163	1173	1631	2090	2549	3009	3470		
6'-6" (78") PRECAST	908		1451	2622	4380	7168 (45)	6038 (19)	7181 (19)	8328 (20)		
7'-6" (90") PRECAST	743		1238	2177	3490	5051	6781	8594	10394		
8'-4" (100") PRECAST	554		1011	1729	2632	3205	3698	4191	4685		
8'-10" (106") PRECAST	475		852	1445	2166	2842	3472	4102	4732		
11'-4" (136") PRECAST	362		582	945	1368	1846	2423	3127	4006		
12'-0" (144") PRECAST	337		540	873	1254	1684	2193	2805	3552		
13'-4" (160") PRECAST	296		471	755	1075	1428	1838	2316	2883		
14'-0" (168") PRECAST	279		424	706	1002	1326	1697	2127	2630		
14'-8" (176") PRESTRESSED	N.R.		NR	NR	NR	NR	NR	NR	NR		
15'-4" (184") PRESTRESSED	N.R.		412	710	1250	1733	2058	2320	2513		
17'-4" (208") PRESTRESSED	N.R.		NR	NR	NR	NR	NR	NR	NR		
19'-4" (232") PRESTRESSED	N.R.		300	536	950	1326	1609	1849	2047		
21'-4" (256") PRESTRESSED	N.R.		NR	NR	NR	NR	NR	NR	NR		
22'-0" (264") PRESTRESSED	N.R.		235	418	750	1037	1282	1515	1716		
24'-0" (288") PRESTRESSED	N.R.		NR	NR	NR	NR	NR	NR	NR		

SAFE UPLIFT LOADS FOR 8" PRECAST & PRESTRESSED U-LINTELS

SAFE UPLIFT LOADS FOR 8" PRECAST & PRESTRESSED U-LINTELS											
LENGTH	TYPE	SAFE LOAD - POUNDS PER LINEAR FOOT									
		8F8-1T	8F12-1T	8F16-1T	8F20-1T	8F24-1T	8F28-1T	8F32-1T	8F36-1T	8F40-1T	8F44-1T
2'-10" (34") PRECAST	1972	3173	4460	5747	7034	8321	9608				
3'-6" (42") PRECAST	1972	3173	4460	5747	7034	8321	9608				
4'-0" (48") PRECAST	1599	2524	3547	4569	5591	6613	7635				
4'-6" (54") PRECAST	1383	2192	3079	3966	4853	5740	6627				
5'-4" (64") PRECAST	1207	1940	2724	3508	4292	5077	5861				
5'-10" (70") PRECAST	1019	1632	2290	2949	3607	4265	4924				
6'-6" (78") PRECAST	829	1492	2093	2694	3295	3897	4498				
7'-6" (90") PRECAST	727 (10)	1168	1634	2102	2571	3039	3508				
8'-4" (100") PRECAST	561	880	1153 (10)	1471 (10)	1811 (10)	2152 (10)	2494 (10)				
10'-6" (126") PRECAST	530	886	1183	1526	1865	2204	2544				
11'-4" (136") PRECAST	474	485	795 (10)	1034 (10)	1273 (10)	1510 (10)	1747 (10)				
12'-0" (144") PRECAST	420	441	723 (10)	938 (10)	1151 (10)	1366 (10)	1582 (10)				
13'-4" (160") PRECAST	428	455	770	1145	1444	1718	1993				
14'-0" (168") PRECAST	384 (10)	349	559 (10)	723 (10)	887 (10)	1052 (10)	1216 (10)				
14'-8" (176") PRESTRESSED	410	1891	3609	5228	6839	8450	10061				
15'-4" (184") PRESTRESSED	224	302	485 (10)	626 (10)	767 (10)	909 (10)	1052 (10)				
17'-4" (208") PRESTRESSED	187	255	404 (10)	520 (10)	637 (10)	754 (10)	872 (10)				
19'-4" (232") PRESTRESSED	162	222	347 (10)	448 (10)	549 (10)	650 (10)	751 (10)				
21'-4" (256") PRESTRESSED	142	198	308 (10)	393 (10)	480 (10)	567 (10)	654 (10)				
22'-0" (264") PRESTRESSED	137	192	295 (10)	378 (10)	461 (10)	545 (10)	629 (10)				
24'-0" (288") PRESTRESSED	124	175	267 (10)	341 (10)	415 (10)	491 (10)	566 (10)				

SAFE GRAVITY LOADS FOR 8" PRECAST w/ 2" RECESS DOOR U-LINTELS

SAFE GRAVITY LOADS FOR 8" PRECAST w/ 2" RECESS DOOR U-LINTELS											
LENGTH	TYPE	SAFE LOAD - POUNDS PER LINEAR FOOT									
		8R8-08	8R12-08	8R16-08	8R20-08	8R24-08	8R28-08	8R32-08	8R36-08	8R40-08	8R44-08
4'-4" (52") PRECAST	1635		1749	3355	3228	4349	5421	6493	7567		
4'-6" (54") PRECAST	1494		1596	3053	2902	3959	4946	5924	6904		
5'-8" (68") PRECAST	866		920	1770	1778	2277	2839	3402	3966		
5'-10" (70") PRECAST	810		1113	2342	2426	2942	3508	4074	4640		
6'-8" (80") PRECAST	797		801	1625	1625	2048	2515	2982	3449		
7'-6" (90") PRECAST	669		755	1490	1490	1840	2240	2640	3040		
9'-8" (116") PRECAST	411		466	990	990	1223	1523	1823	2123		

SAFE UPLIFT LOADS FOR 8" PRECAST w/ 2" RECESS DOOR U-LINTELS

SAFE UPLIFT LOADS FOR 8" PRECAST w/ 2" RECESS DOOR U-LINTELS											
LENGTH	TYPE	SAFE LOAD - POUNDS PER LINEAR FOOT									
		8R8-1T	8R12-1T	8R16-1T	8R20-1T	8R24-1T	8R28-1T	8R32-1T	8R36-1T	8R40-1T	8R44-1T
4'-4" (52") PRECAST	905	1748	2635	3522	4409	5296	6183				
4'-6" (54") PRECAST	867	1675	2525	3374	4224	5074	5924				
5'-8" (68") PRECAST	675	1301	1960	2618	3277	3935	4594				
5'-10" (70") PRECAST	655	1282	1900	2538	3176	3815	4453				
6'-8" (80") PRECAST	570	1012	1651	2290	2928	3566	4204				
7'-6" (90") PRECAST	506	797	1462	1982	2502	3022	3542				
9'-8" (116") PRECAST	395	491	921 (10)	1361 (10)	1801 (10)	2241 (10)	2681 (10)				

WOOD ANCHOR TABLE

OBTAIN UPLIFT REQUIREMENTS FROM TRUSS MANUFACTURER'S ENGINEERING

UPLIFT LBS. SYP	UPLIFT LBS. SPF	TRUSS CONNECTOR*	TO PLATES	TO RAFTER/TRUSS	TO STUDS
< 420	< 245	H5A	3-6d	3-6d	
< 455	< 265	H5	4-6d	4-6d	
< 360	< 225	H4	4-6d	4-6d	
< 455	< 320	H3	4-6d	4-6d	
< 415	< 365	H2.5	5-6d	5-6d	
< 600	< 535	H2.5A	5-6d	5-6d	
< 950	< 820	H8	8-6d	8-6d	
< 745	< 565	H8	5-10d, 1 1/2"	5-10d, 1 1/2"	
< 1465	< 1050	H14-1	13-6d	12-6d, 1 1/2"	
< 1465	< 1050	H14-2	15-6d	12-6d, 1 1/2"	
< 990	< 850	H10-1	8-6d, 1 1/2"	8-6d, 1 1/2"	
< 760	< 655	H10-2	6-10d	6-10d	
< 1470	< 1265	H16-1	10-10d, 1 1/2"	2-10d, 1 1/2"	
< 1470	< 1265	H16-2	10-10d, 1 1/2"	2-10d, 1 1/2"	
< 1000	< 860	MTS24C	7-10d 1 1/2"	7-10d 1 1/2"	
< 1450	< 1245	HTS24	12-10d 1 1/2"	12-10d 1 1/2"	
< 2800	< 2490	2-HTS24			
< 2050	< 1785	LG72	14-16d	14-16d	
HEAVY GIRDER TIEDOWNS*					
< 3865	< 3330	MG7			1-5/8" THREADED ROD 12" EMBEDMENT
< 10980	< 6485	HGT-2		22-10d	2-5/8" THREADED ROD 12" EMBEDMENT
< 10530	< 9035	HGT-3		16-10d	2-5/8" THREADED ROD 12" EMBEDMENT
< 9250	< 9250	HGT-4		16-10d	2-5/8" THREADED ROD 12" EMBEDMENT
STUD STRAP CONNECTOR*					
< 435	< 435	SSP DOUBLE TOP PLATE	3-10d		4-10d
< 455	< 420	SSP SINGLE SILL PLATE	1-10d		4-10d
< 825	< 825	DSP DOUBLE TOP PLATE	6-10d		8-10d
< 825	< 600	DSP SINGLE SILL PLATE	2-10d		8-10d
< 885	< 760	SP4			6-10d, 1 1/2"
< 1240	< 1065	SPH4			10-10d, 1 1/2"
< 885	< 760	SP6			6-10d, 1 1/2"
< 1240	< 1065	SPH6			10-10d, 1 1/2"
< 1235	< 1165	LSTA18	14-10d		
< 1235	< 1235	LSTA21	16-10d		
< 1030	< 1030	CS20	18-8d		
< 1705	< 1705	CS16	28-8d		
STUD ANCHORS*					
< 1350	< 1305	LTT19	8-16d		1/2" AB
< 2310	< 2310	LTT131	18-10d, 1 1/2"		1/2" AB
< 2775	< 2570	HD2A	2-5/8" BOLTS		5/8" AB
< 4175	< 3695	HTT16	18-16d		5/8" AB
< 1400	< 1400	PAHD42	16-16d		