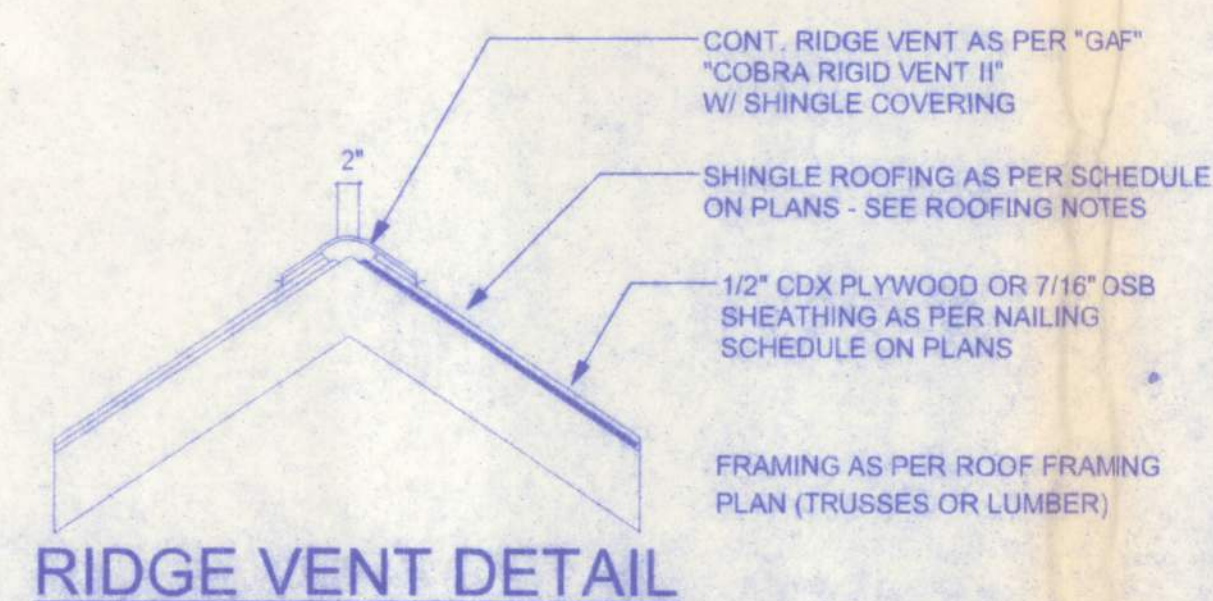


**TYPICAL WALL SECTION**  
SCALE: 3/4" = 1'-0"

CONNECTOR SCHEDULE FOR TRUSS ANCHORAGE				
CONNECTOR	TRUSS	TOP PLATE	UPLIFT PROVIDED	MANUFACTURER
H2.5	5-8d NAILS	5-8d NAILS	365 LBS	SIMPSON
H10	8-8d NAILS	8-8d NAILS	850 LBS	SIMPSON
MTS12	7-10d NAILS	7-10d NAILS	1,000 LBS	SIMPSON
H16	2-10d NAILS	10-10d NAILS	1,300 LBS	SIMPSON
(2)HTS20	10-10d NAILS	10-10d NAILS	2 x 1,450 = 2,900 LBS	SIMPSON

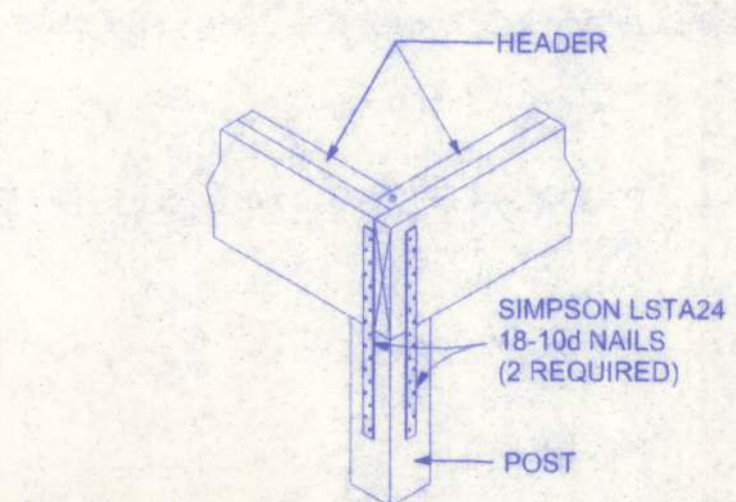
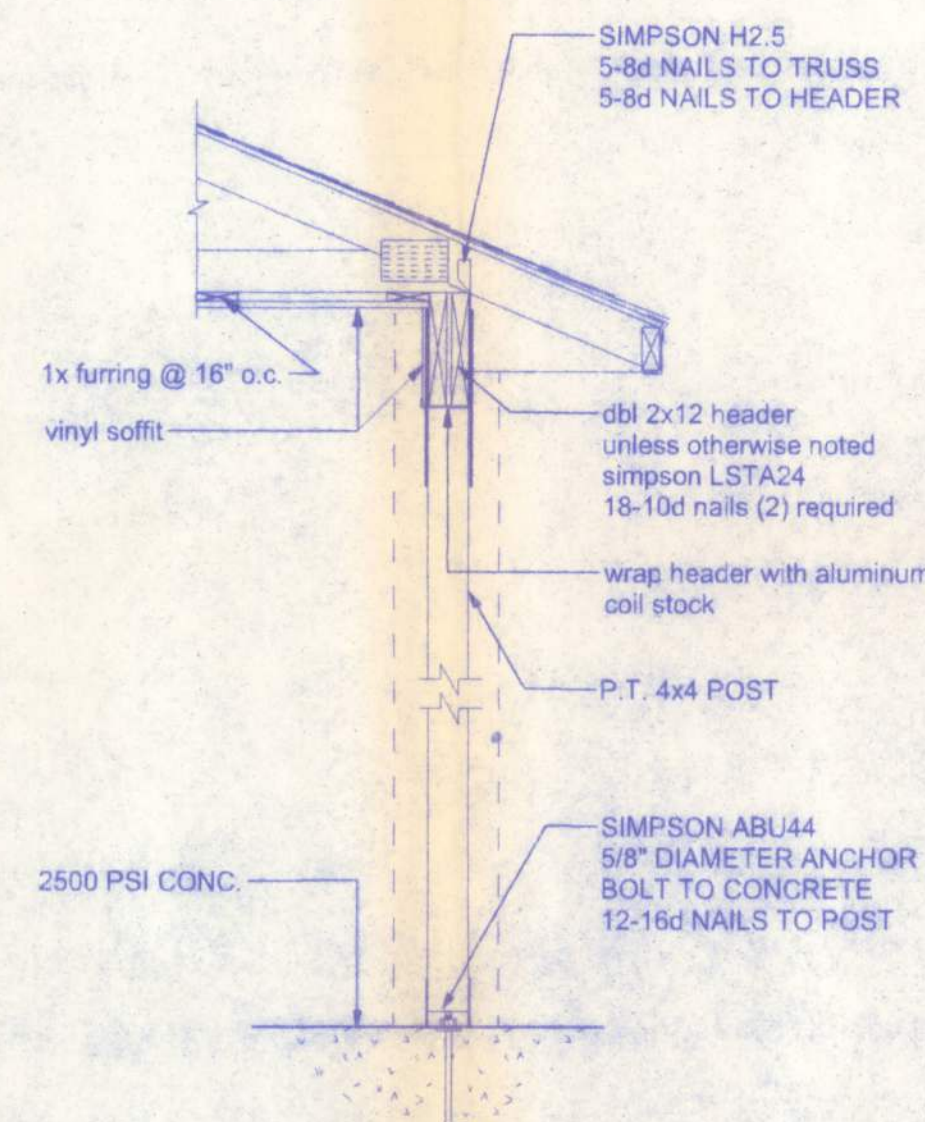
### VENTILATION REQUIREMENTS

Total Attic Square Footage	Recommended Length of Cobra Rigid Vent II (Feet)	Minimum Intake of Ventilation (Net Free Area in Sq. In.)
1600	21	384
1900	25	456
2200	29	528
2500	33	600
2800	41	744
3100	41	820
3400	45	816

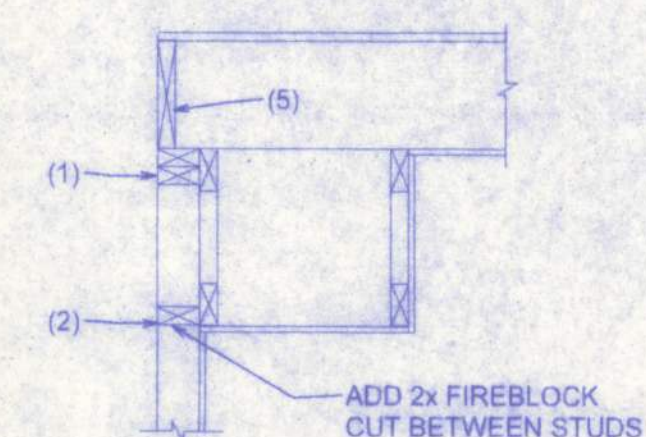


**TOP PLATE SPLICE DETAILS**  
SCALE: 1/2" = 1'-0"

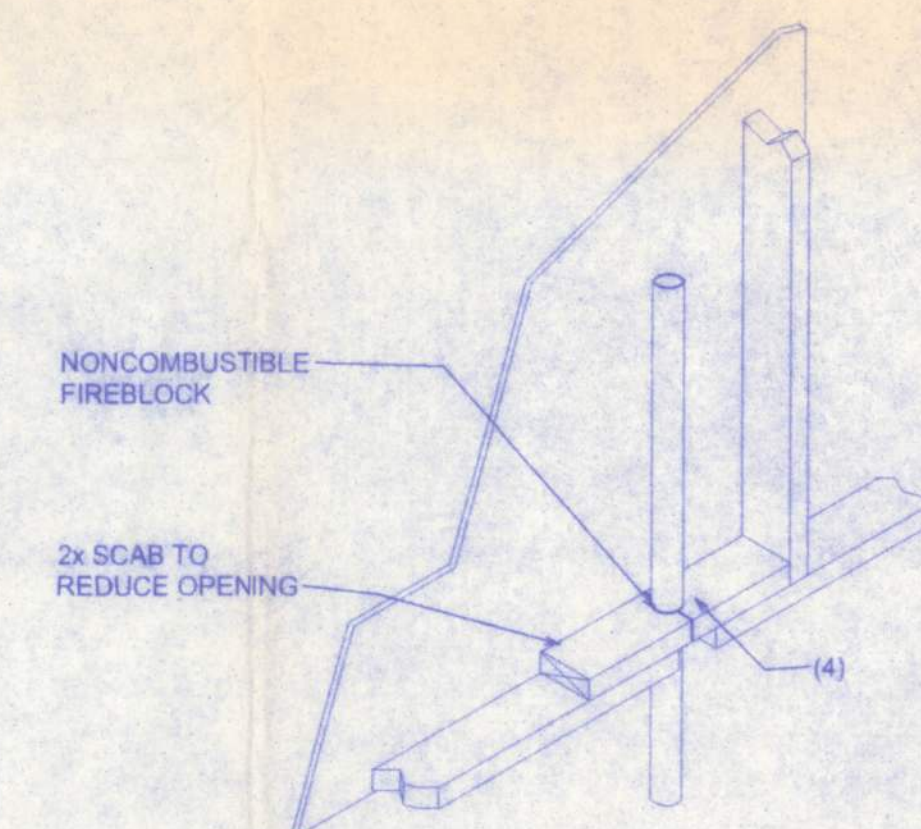
**A PORCH SECTION**  
SCALE: 3/4" = 1'-0"



**CORNER POST/HEADER DETAIL**  
NTS



**SOFFIT/DROPPED CLG.**



**PENETRATIONS**

### FIREBLOCKING NOTES:

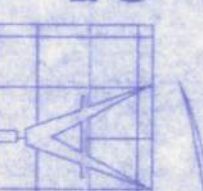
FIREBLOCKING SHALL BE INSTALLED IN WOOD FRAME CONSTRUCTION IN THE FOLLOWING LOCATIONS:

1. IN CONCEALED SPACES OF STUD WALLS AND PARTITIONS INCLUDING FURRED SPACES AT CEILING AND FLOOR LEVELS.
2. AT ALL INTERCONNECTIONS BETWEEN CONCEALED VERTICAL AND HORIZONTAL SPACES SUCH AS OCCUR AT SOFFITS, DROP CEILINGS, COVE CEILINGS, ETC.
3. IN CONCEALED SPACES BETWEEN STAIR STRINGERS AT THE TOP AND BOTTOM OF THE RUN.
4. AT OPENINGS AROUND VENTS, PIPES, DUCTS, CHIMNEYS AND FIREPLACES AT CEILING AND FLOOR LEVELS WITH PYROFLEX MULTIFLEX SEALANT
5. AT ALL INTERCONNECTIONS BETWEEN CONCEALED VERTICAL STUD WALL OR PARTITION SPACES AND CONCEALED SPACES CREATED BY AN ASSEMBLY OF FLOOR JOISTS. FIREBLOCKING SHALL BE PROVIDED FOR THE FULL DEPTH OF THE JOISTS AT THE ENDS AND OVER THE SUPPORTS.

Walter H. Fair  
1/6/12  
PE #56001

LOT 2  
MAY-FAIR UNIT 3  
ST JOHNS MODEL

128 SW NASSAU STREET  
LAKE CITY, FL 32025  
(386)758-4209



Freeman  
Design Group  
Inc.

DATE	DRAWN BY
01/03/12	W.H.F.
REVISIONS	
SHEET	A-7
OF	9
PROJECT NO.	
12.R002	

CERTIFICATE OF AUTHORIZATION # 00043701