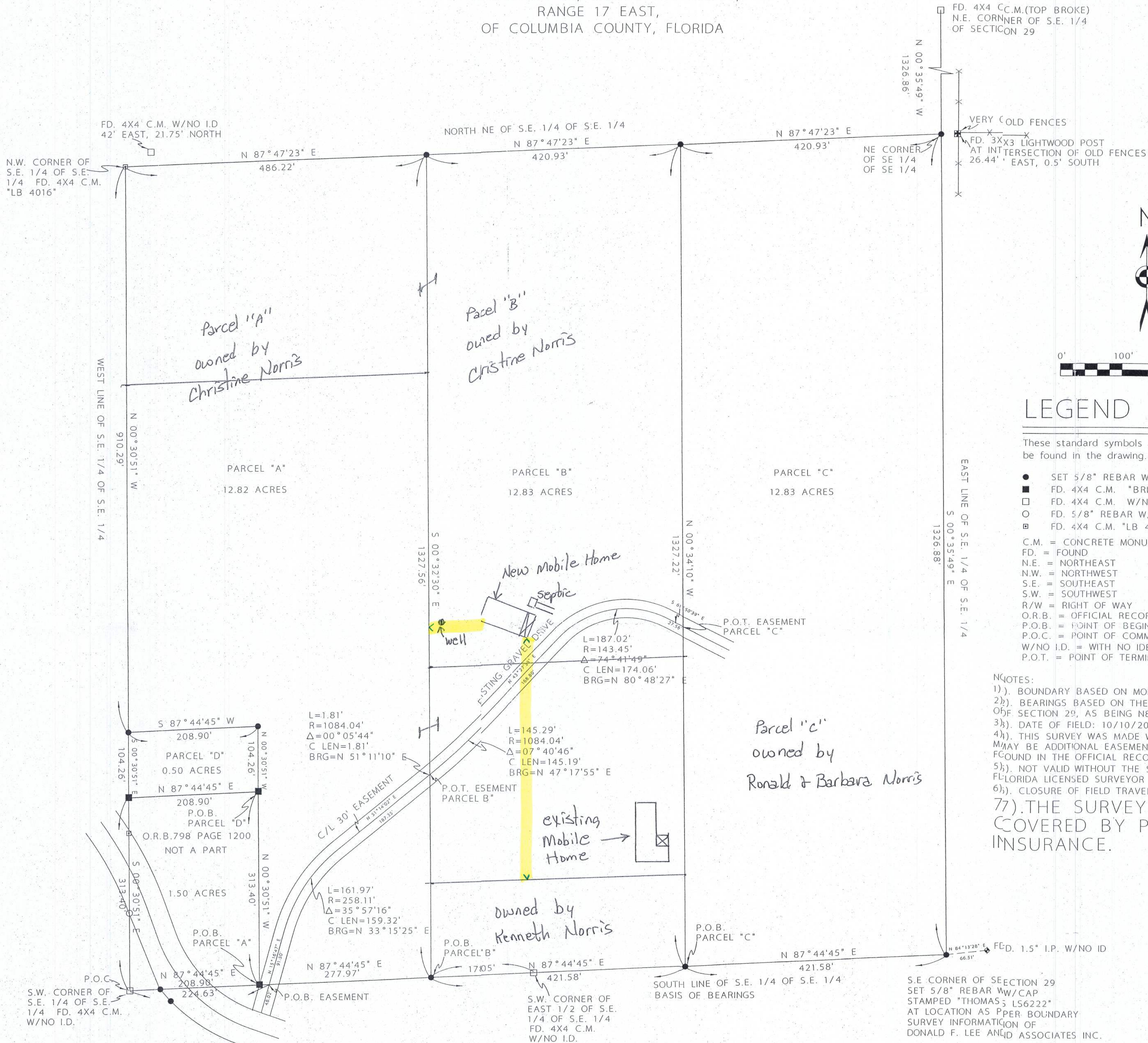


BOUNDARY SURVEY  
IN  
THE SUTHEAST 1/4 OF THE SOUTHEAST 1/4  
OF SECTION 29, TOWNSHIP 1 SOUTH,  
RANGE 17 EAST,  
OF COLUMBIA COUNTY, FLORIDA



LEGEND

These standard symbols may be found in the drawing.

- SET 5/8" REBAR W/CAP "THOMAS L56222"
- FD. 4X4 C.M. "BRITT L.B. 1079" (UNLESS NOTED OTHERWISE)
- FD. 4X4 C.M. W/NO I.D. (UNLESS NOTED OTHERWISE)
- FD. 5/8" REBAR W/CAP "LB 7042"
- FD. 4X4 C.M. "LB 4016"

C.M. = CONCRETE MONUMENT  
FD. = FOUND  
N.E. = NORTHEAST  
N.W. = NORTHWEST  
S.E. = SOUTHEAST  
S.W. = SOUTHWEST  
R/W = RIGHT OF WAY  
O.R.B. = OFFICIAL RECORD BOOK  
P.O.B. = POINT OF BEGINNING  
P.O.C. = POINT OF COMMENCEMENT  
W/NO I.D. = WITH NO IDENTIFICATION  
P.O.T. = POINT OF TERMINUS

NOTES:

- 1). BOUNDARY BASED ON MONUMENTATION FOUND AND ACCEPTED.
- 2). BEARINGS BASED ON THE SOUTH LINE OF THE S.E. 1/4 OF THE S.E. 1/4 OF SECTION 29, AS BEING N87°44'45"E.
- 3). DATE OF FIELD: 10/10/2014.
- 4). THIS SURVEY WAS MADE WITHOUT THE BENEFIT OF A TITLE SEARCH, THERE MAY BE ADDITIONAL EASEMENTS, RESTRICTIONS, ETC. NOT SHOWN HEREON, BUT FOUND IN THE OFFICIAL RECORDS.
- 5). NOT VALID WITHOUT THE SIGNATURE AND THE ORIGINAL RAISED SEAL OF A FLORIDA LICENSED SURVEYOR AND MAPPER.
- 6). CLOSURE OF FIELD TRAVERSE: BETTER THAN 1:50,000.
- 7). THE SURVEY DEPICTED HERE IS NOT COVERED BY PROFESSIONAL LIABILITY INSURANCE.

DESCRIPTIONS:

PARCEL "A"  
Commence at the S.W. corner of the S.E. 1/4 of the S.E. 1/4 of Section 29, Township 1 South, Range 17 East, of Columbia County, Florida, thence run N87°44'45"E as a basis of bearings, along the south line of said S.E. 1/4 of S.E. 1/4, a distance of 208.90 feet, to the S.E. corner of lands described in O.R.B. 798, page 1200, of the public records of Columbia County, Florida, and the POINT OF BEGINNING; Thence run N00°30'51"W, along the east line of said lands, a distance of 313.40 feet, to the N.E. corner of said lands; Thence continue N0°30'51"W, a distance of 104.26 feet; Thence run S87°44'45"W, a distance of 208.90 feet to the west line of said S.E. 1/4 of S.E. 1/4; Thence run N0°30'51"W, along the west line of said S.E. 1/4 of S.E. 1/4, a distance of 910.29 feet, to the N.W. corner of said S.E. 1/4 of S.E. 1/4; Thence run N87°47'23"E, along the north line of said S.E. 1/4 of S.E. 1/4, a distance of 486.22 feet; Thence run S0°32'30"E, a distance of 1327.56 feet, to the south line of said S.E. 1/4 of S.E. 1/4; Thence run S87°44'45"W, along said south line, a distance of 277.97 feet, to the POINT OF BEGINNING; Said lands described containing 12.82 acres, more or less.

Along with a 30 foot easement, for the purpose of ingress and egress, the centerline of which is described as follows; Commence at the S.W. corner of the S.E. 1/4 of the S.E. 1/4 of Section 29, Township 1 South, Range 17 East, of Columbia County, Florida, thence run N87°44'45"E, as a basis of bearings, along the south line of said S.E. 1/4 of S.E. 1/4, a distance of 224.63 feet, to the POINT OF BEGINNING; Thence run S15°16'47"W, a distance of 48.02 feet, and the POINT OF TERMINUS of said easement, said point being on the north maintained right of way line of Spradley Road, a county maintained, paved road, having a variable maintained right of way; The side lines of said easement to be shortened, or prolonged to meet at right of way lines and parcel lines. Said centerline running along an existing gravel driveway.

Also, being subject to a 30 foot easement, for the purpose of ingress and egress, the centerline of which is described as follows; Commence at the S.W. corner of the S.E. 1/4 of the S.E. 1/4 of Section 29, Township 1 South, Range 17 East, of Columbia County, Florida, thence run N87°44'45"E, as a basis of bearings, along the south line of said S.E. 1/4 of S.E. 1/4, a distance of 224.63 feet, to the POINT OF BEGINNING; Thence run N15°16'47"E, a distance of 91.30 feet, to the beginning of a curve, concave to the southeast, said curve having a central angle of 35°57'16", a radius of 258.11 feet, an arc length of 161.97 feet, a chord bearing of N33°15'25"E, and a chord length of 159.32 feet; Thence run Northeast, along the arc of said curve, a distance of 161.97 feet, to the end of said curve; Thence run N51°14'02"E, a distance of 187.35 feet, to the beginning of a curve, concave to the northwest, said curve having central angle of 00°05'44", a radius of 1084.04 feet, an arc length of 1.81 feet, a chord bearing of N51°11'10"E, and a chord length of 1.81 feet; Thence run Northeast, along the arc of said curve, a distance of 1.81 feet, to the POINT OF TERMINUS of said easement, said point being on the east line of the above described PARCEL "A"; The side lines of said easement to be shortened, or prolonged to meet at right of way lines and parcel lines. Said centerline running along an existing gravel driveway.

PARCEL "B"  
Commence at the S.W. corner of the S.E. 1/4 of the S.E. 1/4 of Section 29, Township 1 South, Range 17 East, of Columbia County, Florida, thence run N87°44'45"E as a basis of bearings, along the south line of said S.E. 1/4 of S.E. 1/4, a distance of 486.87 feet to the POINT OF BEGINNING; Thence continue N87°44'45"E, along said south line, a distance of 421.8 feet; Thence run N00°34'10"W, a distance of 1327.22 feet, to the north line of said S.E. 1/4 of S.E. 1/4; Thence run S87°47'23"W, along said north line, a distance of 420.93 feet; Thence run S00°32'30"E, a distance of 1327.56 feet to the POINT OF BEGINNING; Said lands described containing 12.83 acres, more or less.

Along with a 30 foot easement, for the purpose of ingress and egress, the centerline of which is described as follows; Commence at the S.W. corner of the S.E. 1/4 of the S.E. 1/4 of Section 29, Township 1 South, Range 17 East, of Columbia County, Florida, thence run N87°44'45"E, as a basis of bearings, along the south line of said S.E. 1/4 of S.E. 1/4, a distance of 224.63 feet, to the POINT OF BEGINNING; Thence run S15°16'47"W, a distance of 48.02 feet, to the north maintained right of way line of Spradley Road, a county maintained, paved road, having a variable maintained right of way; Thence, returning to the POINT OF BEGINNING, run N15°16'47"E, a distance of 91.30 feet, to the beginning of a curve, concave to the southeast, said curve having a central angle of 35°57'16", a radius of 258.11 feet, an arc length of 161.97 feet, a chord bearing of N33°15'25"E, and a chord length of 159.32 feet; Thence run Northeast, along the arc of said curve, a distance of 161.97 feet, to the end of said curve; Thence run N51°14'02"E, a distance of 187.35 feet, to the beginning of a curve, concave to the northwest, said curve having central angle of 00°05'44", a radius of 1084.04 feet, an arc length of 1.81 feet, a chord bearing of N51°11'10"E, and a chord length of 1.81 feet; Thence run Northeast, along the arc of said curve, a distance of 1.81 feet, to the POINT OF TERMINUS of said centerline, said point being on the west line of the above described PARCEL "B"; The side lines of said easement to be shortened, or prolonged to meet at right of way lines and parcel lines. Said centerline running along an existing gravel driveway.

Also, being subject to a 30 foot easement, for the purpose of ingress and egress, the centerline of which is described as follows; Commence at the S.W. corner of the S.E. 1/4 of the S.E. 1/4 of Section 29, Township 1 South, Range 17 East, of Columbia County, Florida, thence run N87°44'45"E, as a basis of bearings, along the south line of said S.E. 1/4 of S.E. 1/4, a distance of 224.63 feet; Thence run N15°16'47"E, a distance of 91.30 feet, to the beginning of a curve, concave to the southeast, said curve having a central angle of 35°57'16", a radius of 258.11 feet, an arc length of 161.97 feet, a chord bearing of N33°15'25"E, and a chord length of 159.32 feet; Thence run Northeast, along the arc of said curve, a distance of 161.97 feet, to the end of said curve; Thence run N51°14'02"E, a distance of 187.35 feet, to the beginning of a curve, concave to the northwest, said curve having central angle of 00°05'44", a radius of 1084.04 feet, an arc length of 1.81 feet, a chord bearing of N51°11'10"E, and a chord length of 1.81 feet; Thence run Northeast, along the arc of said curve, a distance of 1.81 feet, to the west line of the above described PARCEL "B"; Thence run N00°34'10"W, a distance of 1327.22 feet, to the north line of said S.E. 1/4 of S.E. 1/4; Thence run S87°47'23"W, along said north line, a distance of 420.93 feet, to the N.E. corner of said S.E. 1/4 of S.E. 1/4; Thence run S00°32'30"E, along the east line of said S.E. 1/4 of S.E. 1/4, a distance of 1326.88 feet, to the S.E. corner of said Section 29; Thence run S87°44'45"W, along the south line of said S.E. 1/4 of S.E. 1/4, a distance of 421.53 feet, to the POINT OF BEGINNING; Said lands described containing 12.83 acres, more or less.

PARCEL "C"  
Commence at the S.W. corner of the S.E. 1/4 of the S.E. 1/4 of Section 29, Township 1 South, Range 17 East, of Columbia County, Florida, thence run N87°44'45"E as a basis of bearings, along the south line of said S.E. 1/4 of S.E. 1/4, a distance of 908.45 feet, to the POINT OF BEGINNING; Thence run N00°34'10"W, a distance of 1327.22 feet, to the north line of said S.E. 1/4 of S.E. 1/4; Thence run S87°47'23"E, along said north line, a distance of 420.93 feet, to the N.E. corner of said S.E. 1/4 of S.E. 1/4; Thence run S00°32'30"E, along the east line of said S.E. 1/4 of S.E. 1/4, a distance of 1326.88 feet, to the S.E. corner of said Section 29; Thence run S87°44'45"W, along the south line of said S.E. 1/4 of S.E. 1/4, a distance of 421.53 feet, to the POINT OF BEGINNING; Said lands described containing 12.83 acres, more or less.

Along with a 30 foot easement, for the purpose of ingress and egress, the centerline of which is described as follows; Commence at the S.W. corner of the S.E. 1/4 of the S.E. 1/4 of Section 29, Township 1 South, Range 17 East, of Columbia County, Florida, thence run N87°44'45"E, as a basis of bearings, along the south line of said S.E. 1/4 of S.E. 1/4, a distance of 224.63 feet, to the POINT OF BEGINNING; Thence run S15°16'47"W, a distance of 48.02 feet, to the north maintained right of way line of Spradley Road, a county maintained, paved road, having a variable maintained right of way; Thence, returning to the POINT OF BEGINNING, run N15°16'47"E, a distance of 91.30 feet, to the beginning of a curve, concave to the southeast, said curve having a central angle of 35°57'16", a radius of 258.11 feet, an arc length of 161.97 feet, a chord bearing of N33°15'25"E, and a chord length of 159.32 feet; Thence run Northeast, along the arc of said curve, a distance of 161.97 feet, to the end of said curve; Thence run N51°14'02"E, a distance of 187.35 feet, to the beginning of a curve, concave to the northwest, said curve having central angle of 00°05'44", a radius of 1084.04 feet, an arc length of 1.81 feet, a chord bearing of N51°11'10"E, and a chord length of 1.81 feet; Thence run Northeast, along the arc of said curve, a distance of 1.81 feet, to the POINT OF TERMINUS of said easement, said point being on the east line of the above described PARCEL "C"; The side lines of said easement to be shortened, or prolonged to meet at right of way lines and parcel lines. Said centerline running along an existing gravel driveway.

PARCEL "D"  
Commence at the S.W. corner of the S.E. 1/4 of the S.E. 1/4 of Section 29, Township 1 South, Range 17 East, of Columbia County, Florida, and run N87°44'45"E, along the south line of said S.E. 1/4 of S.E. 1/4, a distance of 208.90 feet, to the S.E. corner of lands described in O.R.B. 798, page 1200, of the public records of Columbia County, Florida; Thence run N00°30'51"W, along the east line of said lands, a distance of 313.40 feet, to the N.E. corner of said lands, and the POINT OF BEGINNING; Thence continue N00°30'51"W, a distance of 104.26 feet; Thence run S87°44'45"W, a distance of 208.90 feet, to the west line of said S.E. 1/4 of S.E. 1/4; Thence run S00°32'30"E, along said west line, a distance of 104.26 feet, to the N.W. corner of said lands described in O.R.B. 798, page 1200; Thence run N87°44'45"E, along the north line of said lands, a distance of 208.90 feet, to the POINT OF BEGINNING; Said lands described containing 0.5 acres, more or less.

I HEREBY CERTIFY THAT THIS SURVEY MEETS THE MINIMUM TECHNICAL STANDARDS AS SET FORTH BY THE FLORIDA BOARD OF SURVEYORS AND MAPPERS PURSUANT TO CHAPTER 472.027 OF THE FLORIDA STATUTES, AND SJ-17 OF THE FLORIDA ADMINISTRATIVE CODE.

David Craig Thomas  
DAVID CRAIG THOMAS P.S.M. 6222  
166 S.W. FANTASY GLEN, LAKE CITY, FLA. 32024  
PHONE# 386-752-5383 (CELL 386-984-0271)

ED NORRIS

DRAWN DCT	DATE 10/25/14	DATE OF FIELD SURVEY 10/10/14
APPROVED	DATE	
SCALE 1" = 100'	SHEET 1	PROJECT NO. ED NORRIS