

Office copy

11/14/05

DORR RESIDENCE

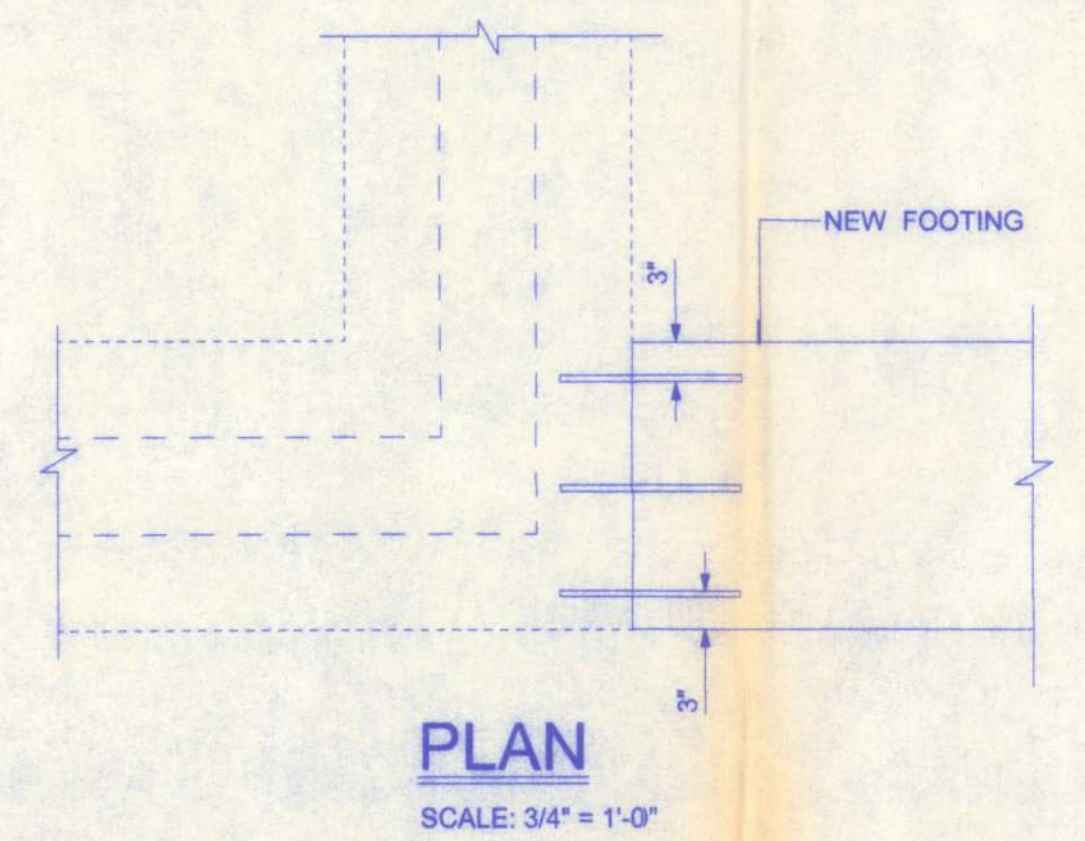
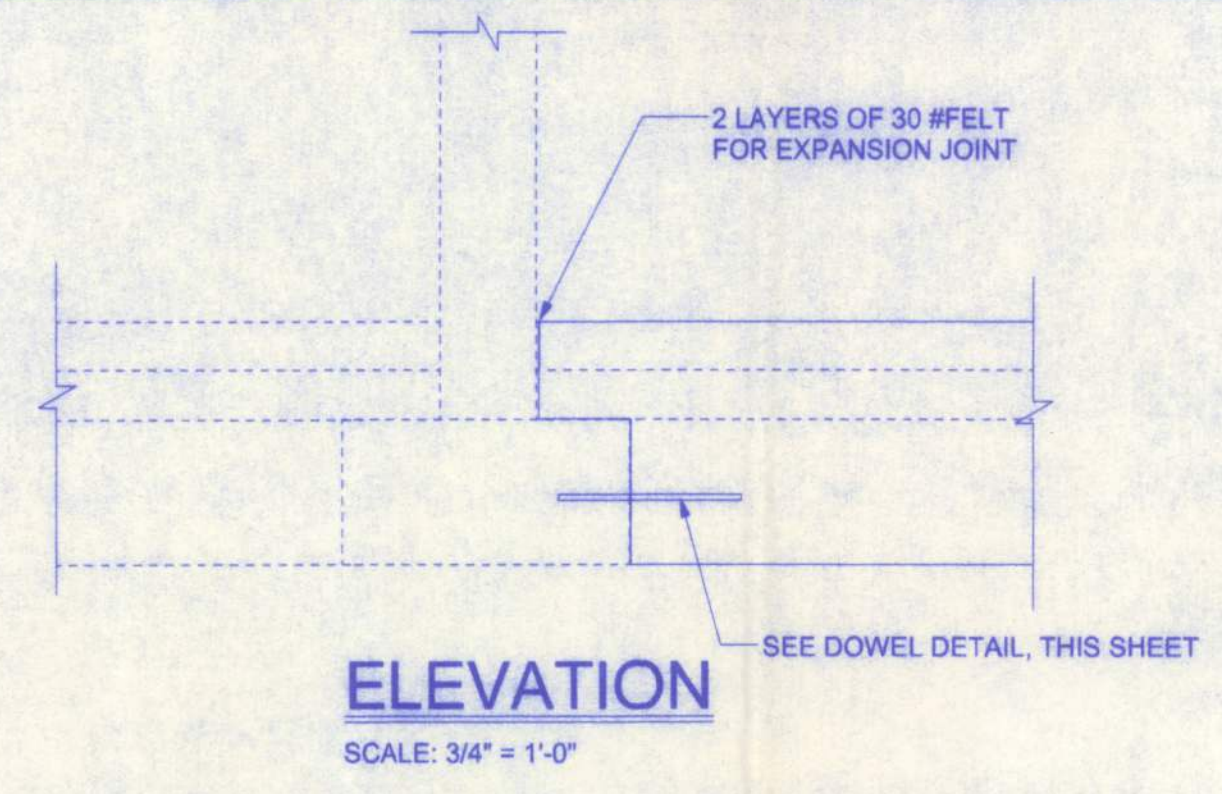
161 N.W. MADISON STREET
SUITE #102
LAKE CITY, FL. 32055
(386)758-4209

CERTIFICATE OF AUTHORIZATION # 00080701

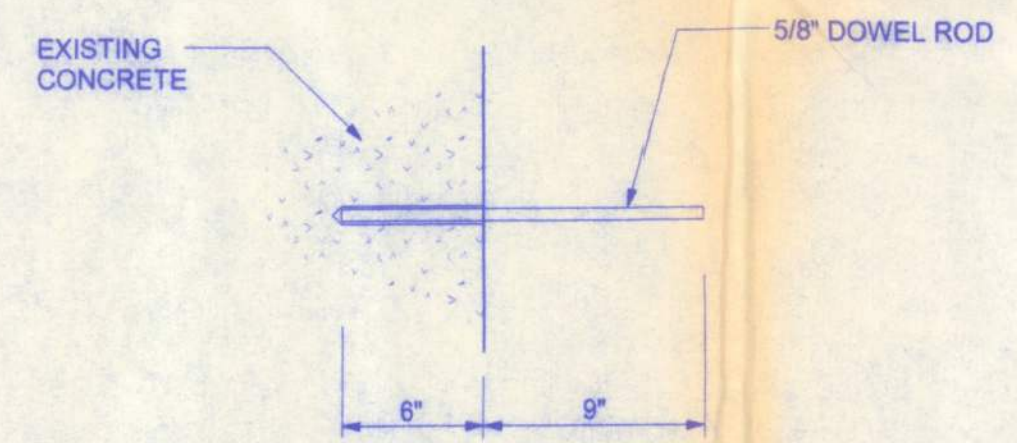


DATE	DRAWN BY
11/10/05	W.H.F.
REVISIONS	
SHEET S-2	
OF 4	
PROJECT NO.	

Office copy



NOTE:
DRILL HOLE 1/8" LARGER THAN DOWEL DIAMETER
AND 1/8" DEEPER THAN EMBEDMENT LENGTH
INTO EXISTING CONCRETE AND REMOVE DUST WITH
OIL FREE COMPRESSED AIR. SET DOWELS WITH EPOXY
INTO HOLES AND LET REMAIN UNTIL IT SETS.

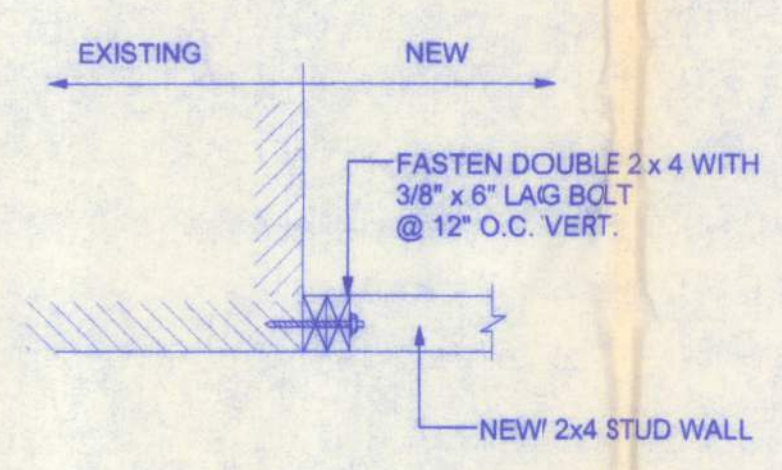


DOWEL DETAIL
SCALE: 1 1/2" = 1'-0"

STEEL COATING RECOMMENDATIONS IN PRESSURE TREATED WOOD:

- Thicker galvanizing generally extends service life of a product. The treated wood industry recommends use of Stainless Steel and hot-dip galvanized connectors and fasteners with treated wood.
- Due to the uncertainties, which are out of the specifiers control, in regard to the chemicals used in pressure treated wood, Simpson recommends the use of stainless steel fasteners, anchors and connectors with treated wood when possible. At a minimum, customers should use ZMAX (G185 HDG per ASTM A653), Batch/Post Hot-Dip Galvanized (per ASTM A123 for connectors and ASTM A153 for fasteners), or mechanically galvanized fasteners (per ASTM B695, Class 55 or greater), product with the newer alternative treated woods.
- G60 galvanized products should not be used with treated woods.
- G90 galvanized connectors can be used with Sodium Borate (DOT - Disodium Octaborate Tetrahydrate) treated woods. Sodium Borate Treated woods are not suitable for applications where moisture exposure is likely. They are suitable for muddall applications when transported, stored, and installed appropriately.
- When using stainless steel or hot-dip galvanized connectors, the connectors and fasteners should be made of the same material.

Simpson Strong-Tie Product Finishes	Untreated Wood	Chromated Copper Arsenate (CCA-G)	DOT Sodium Borate (SBX)	Alkaline Copper Quat ACQ-C and ACQ-D (Carbonate)	Copper Azole (CBA-A and CA-B)	SBX (DOT) with NASIO	Ammoniacal Copper Zinc Arsenate (ACZA)	Other Pressure Treated Woods
Standard (G90)	X	X	X					
ZMAX (G185)	X	X	X	X	X	X		
Post Hot-Dip Galvanized (HDG)	X	X	X	X	X	X	X	X
SST300 (Stainless Steel)	X	X	X	X	X	X	X	X



NEW TO EXISTING
SCALE: 1" = 1'-0"

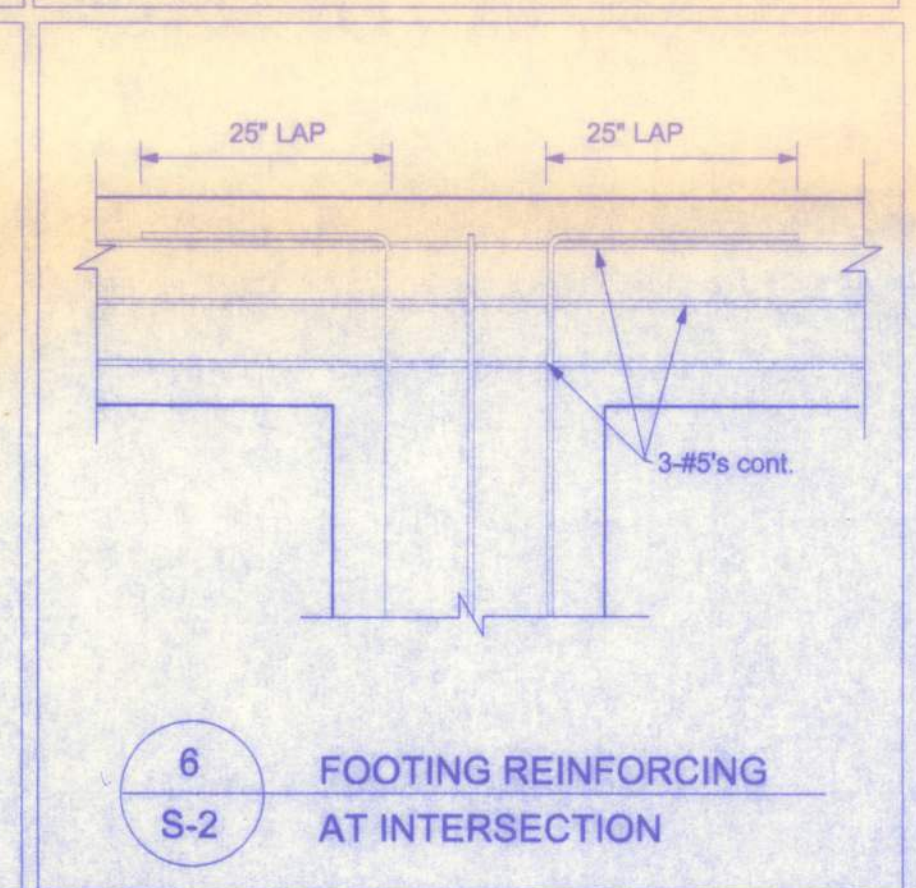
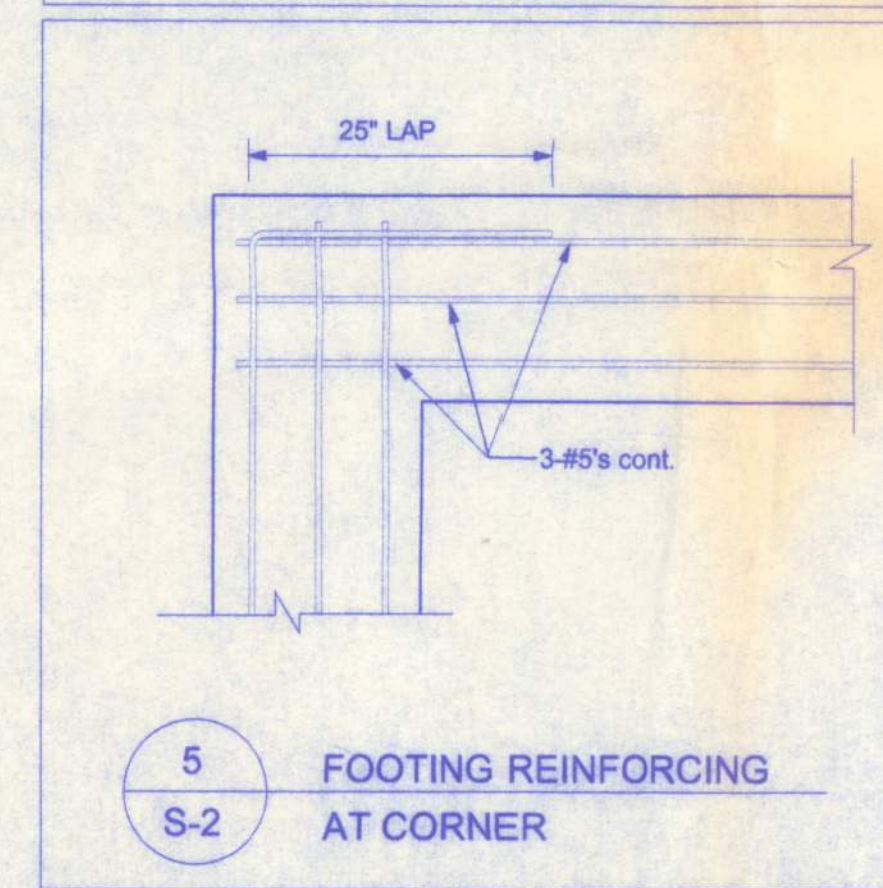
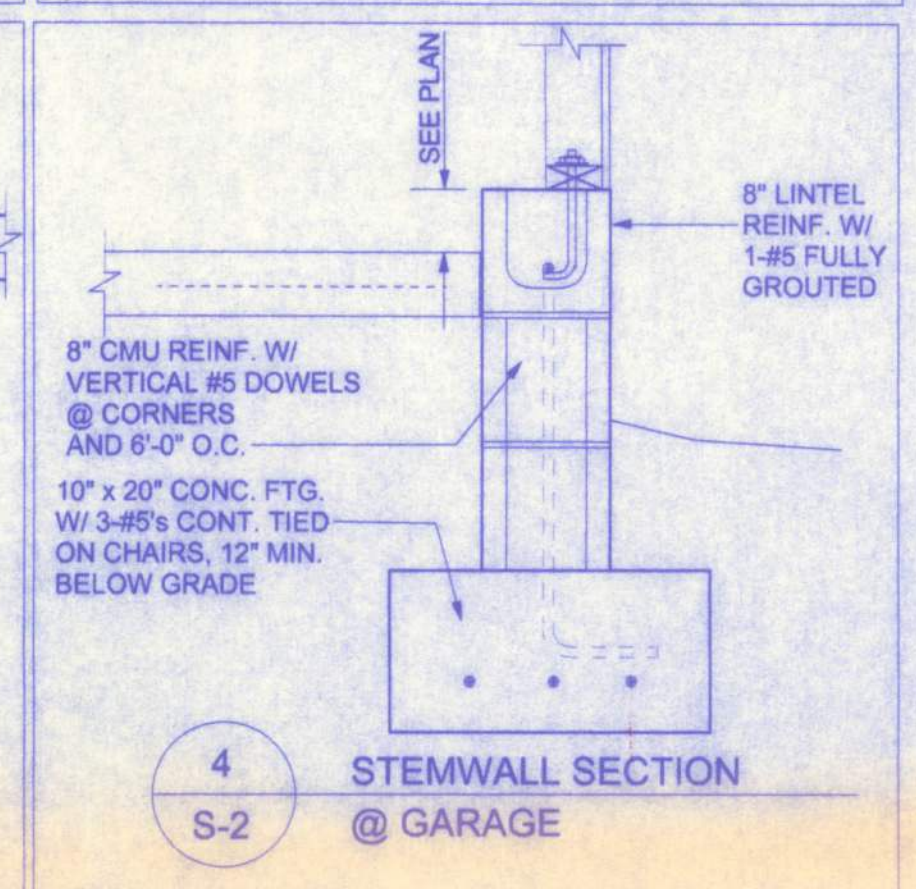
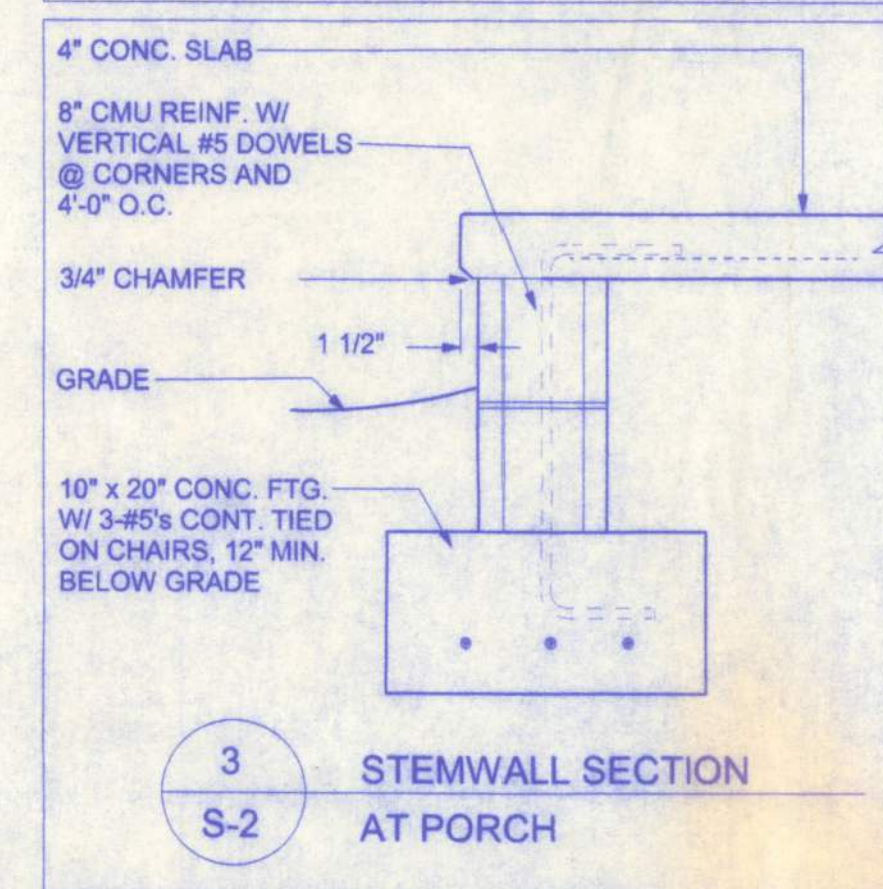
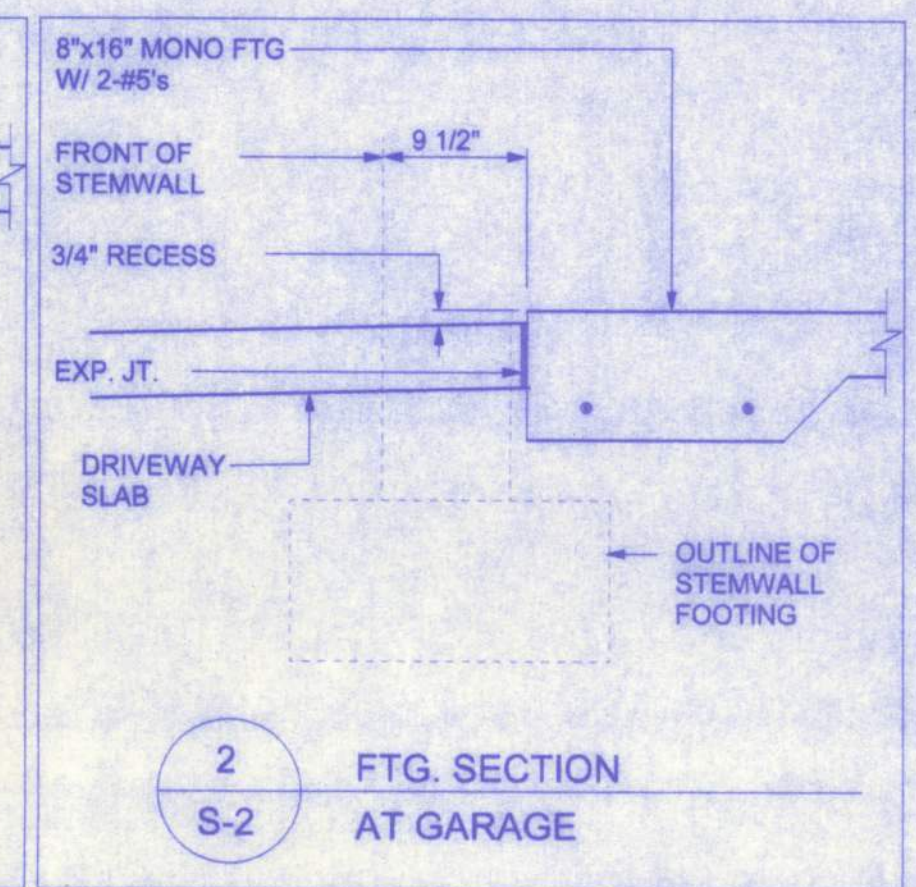
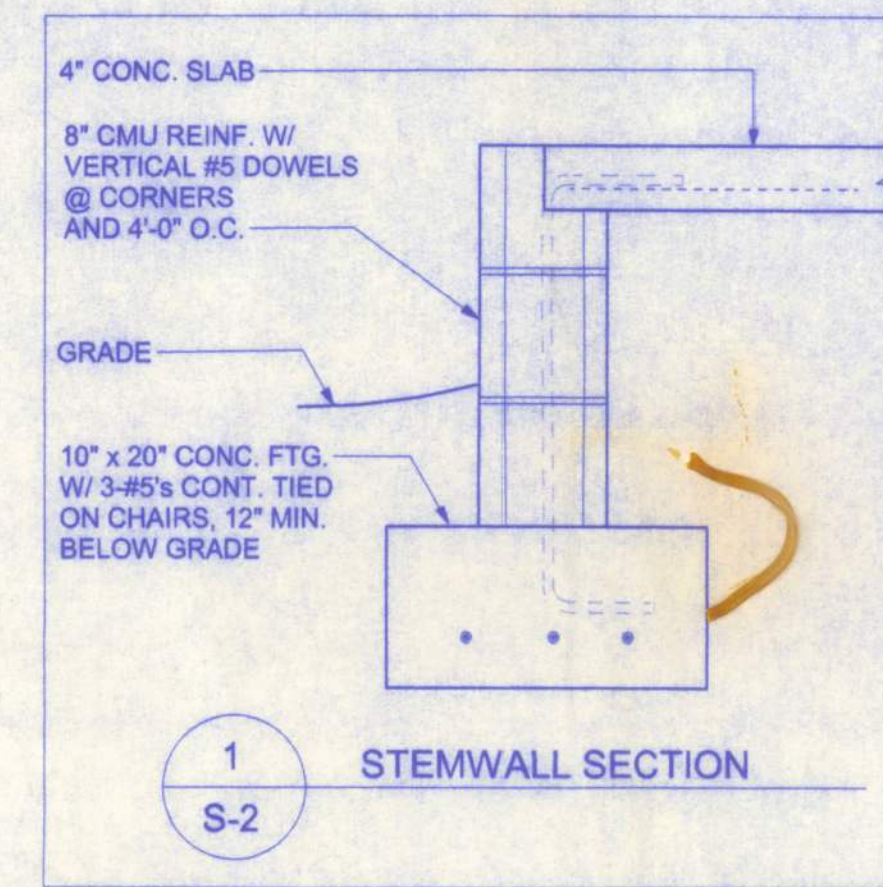
CONCRETE:
CONCRETE SHALL HAVE A MINIMUM SPECIFIED COMPRESSIVE STRENGTH OF 2500 PSI AT 28 DAYS.

REINFORCING STEEL:
THE REINFORCING STEEL SHALL BE MINIMUM GRADE 40.

COVER OVER REINFORCING STEEL
FOR FOUNDATIONS, MINIMUM CONCRETE COVER OVER REINFORCING BARS SHALL BE:
3 INCHES IN FOUNDATIONS WHERE THE CONCRETE IS CAST AGAINST AND PERMANENTLY IN CONTACT WITH THE EARTH OR EXPOSED TO THE EARTH OR WEATHER AND 1 1/2 INCHES ELSEWHERE. REINFORCING BARS EMBEDDED IN GROUTED CELLS SHALL HAVE A MINIMUM CLEAR DISTANCE OF 1/4 INCH FOR FINE GROUT OR 1/2 INCH FOR COARSE GROUT BETWEEN REINFORCING BARS AND ANY FACE OF A CELL. REINFORCING BARS USED IN MASONRY WALLS SHALL HAVE A MASONRY COVER (INCLUDING GROUT) OF NOT LESS THAN 2 INCHES FOR MASONRY UNITS WITH FACE EXPOSED TO EARTH OR WEATHER 1 1/2 INCHES FOR MASONRY UNITS NOT EXPOSED TO EARTH OR WEATHER

REINFORCEMENT MAY BE BENT IN THE SHOP OR THE FIELD PROVIDED:
1. ALL REINFORCEMENT IS BENT COLD.
2. THE DIAMETER OF THE BEND, MEASURED ON THE INSIDE OF THE BAR, IS NOT LESS THAN SIX-BAR DIAMETERS AND
3. REINFORCEMENT PARTIALLY EMBEDDED IN CONCRETE SHALL NOT BE FIELD BENT.
EXCEPTION: WHERE BENDING IS NECESSARY TO ALIGN DOWEL BARS WITH A VERTICAL CELL, BARS PARTIALLY EMBEDDED IN CONCRETE SHALL BE PERMITTED TO BE BENT AT A SLOPE OF NOT MORE THAN 1 INCH OF HORIZONTAL DISPLACEMENT TO 6 INCHES OF VERTICAL BAR LENGTH.

GALVANIZATION:
METAL ACCESSORIES FOR USE IN EXTERIOR WALL CONSTRUCTION AND NOT DIRECTLY EXPOSED TO THE WEATHER SHALL BE GALVANIZED IN ACCORDANCE WITH ASTM A 153, CLASS B-2. METAL PLATE CONNECTORS, SCREWS, BOLTS AND NAILS EXPOSED DIRECTLY TO THE WEATHER SHALL BE STAINLESS STEEL OR HOT DIPPED GALVANIZED.



SLAB REQUIREMENTS

JOINTS ARE NOT REQUIRED IN UNREINFORCED PLAIN CONCRETE SLABS ON GROUND OR IN SLABS FOR ONE AND TWO FAMILY DWELLINGS COMPLYING WITH ONE OF THE FOLLOWING:

- CONCRETE SLABS ON GROUND CONTAINING SYNTHETIC FIBER REINFORCEMENT. FIBER LENGTHS SHALL BE 1/2 INCH TO 2 INCHES IN LENGTH. DOSAGE AMOUNTS SHALL BE FROM 0.75 TO 1.5 POUNDS PER CUBIC YARD IN ACCORDANCE WITH THE MANUFACTURER'S RECOMMENDATIONS. SYNTHETIC FIBERS SHALL COMPLY WITH ASTM C 1116. THE MANUFACTURER OR SUPPLIER SHALL PROVIDE CERTIFICATION OF COMPLIANCE WHEN REQUESTED BY THE BUILDING OFFICIAL. OR
- CONCRETE SLABS ON GROUND CONTAINING 6x6 W1.4 x W1.4 WELDED WIRE REINFORCEMENT FABRIC LOCATED IN THE MIDDLE TO THE UPPER 1/3 OF THE SLAB. WELDED WIRE REINFORCEMENT FABRIC SHALL BE SUPPORTED WITH APPROVED MATERIAL OR SUPPORTS AT SPACING NOT TO EXCEED 3 FT OR IN ACCORDANCE WITH THE MANUFACTURER'S SPECIFICATION. WELDED PLAIN WIRE REINFORCEMENT FABRIC FOR CONCRETE SHALL CONFORM TO ASTM A 185, STANDARD SPECIFICATION FOR STEEL WELDED WIRE REINFORCEMENT FABRIC, PLAIN, FOR CONCRETE REINFORCEMENT.