

BEARING HEIGHT SCHEDULE

	8'-0"
	10'-0"
	12'-0"

8/12 PITCH  
1' OVERHANGS

NOTES:

- 1) REFER TO MAP OF COORDINATIONS FOR EXACT LOCATION AND IDENTIFYING BEARING HEIGHTS FOR FOUNDATION BEARING HEIGHTS
- 2) ALL TRUSSES (INCLUDING TRUSSES UNDER VALLEY FRAMING) MUST BE COMPLETELY DECKED OR REFER TO DETAIL VIDS FOR ALTERNATE BRACING REQUIREMENTS
- 3) ALL VALLEYS ARE TO BE CONVENTIONALLY FRAMED BY BUILDER
- 4) ALL TRUSSES ARE DESIGNED FOR 2.0 C MAXIMUM SPACING. UNLESS OTHERWISE NOTED
- 5) ALL WALLS SHOWN ON PLACEMENT PLAN ARE CONSIDERED TO BE LOAD BEARING. UNLESS OTHERWISE NOTED
- 6) 5/142 TRUSSES MUST BE INSTALLED WITH THE TOP BEING UP
- 7) ALL ROOF TRUSSES HANGERS TO BE SWAP-ON FLOOR TRUSSES OTHERWISE NOTED. ALL TRUSSES MUST BE SWAP-ON
- 8) BEARING HEIGHTS (BHX) TO BE FURNISHED BY BUILDER

SHOP DRAWING APPROVAL

THIS LAYOUT IS THE SCALE SOURCE FOR FABRICATION OF TRUSSES AND JOISTS. ALL PREVIOUS ARCHITECTURAL OR OTHER TRUSS LAYOUTS. REVIEW AND APPROVAL OF THIS LAYOUT MUST BE RECEIVED BEFORE ANY TRUSSES WILL BE BUILT. VERIFY ALL CONDITIONS TO INSURE AGAINST CHANGES THAT WILL RESULT IN EXTRA CHARGES TO YOU.

General Sheet No. \_\_\_\_\_

Approved By: \_\_\_\_\_ Date: \_\_\_\_\_



PHONE: 904-437-3349 FAX: 904-437-3994

Jacksonville  
PHONE: 904-772-6100 FAX: 904-772-1973

Lake City  
PHONE: 386-755-6894 FAX: 386-755-7973

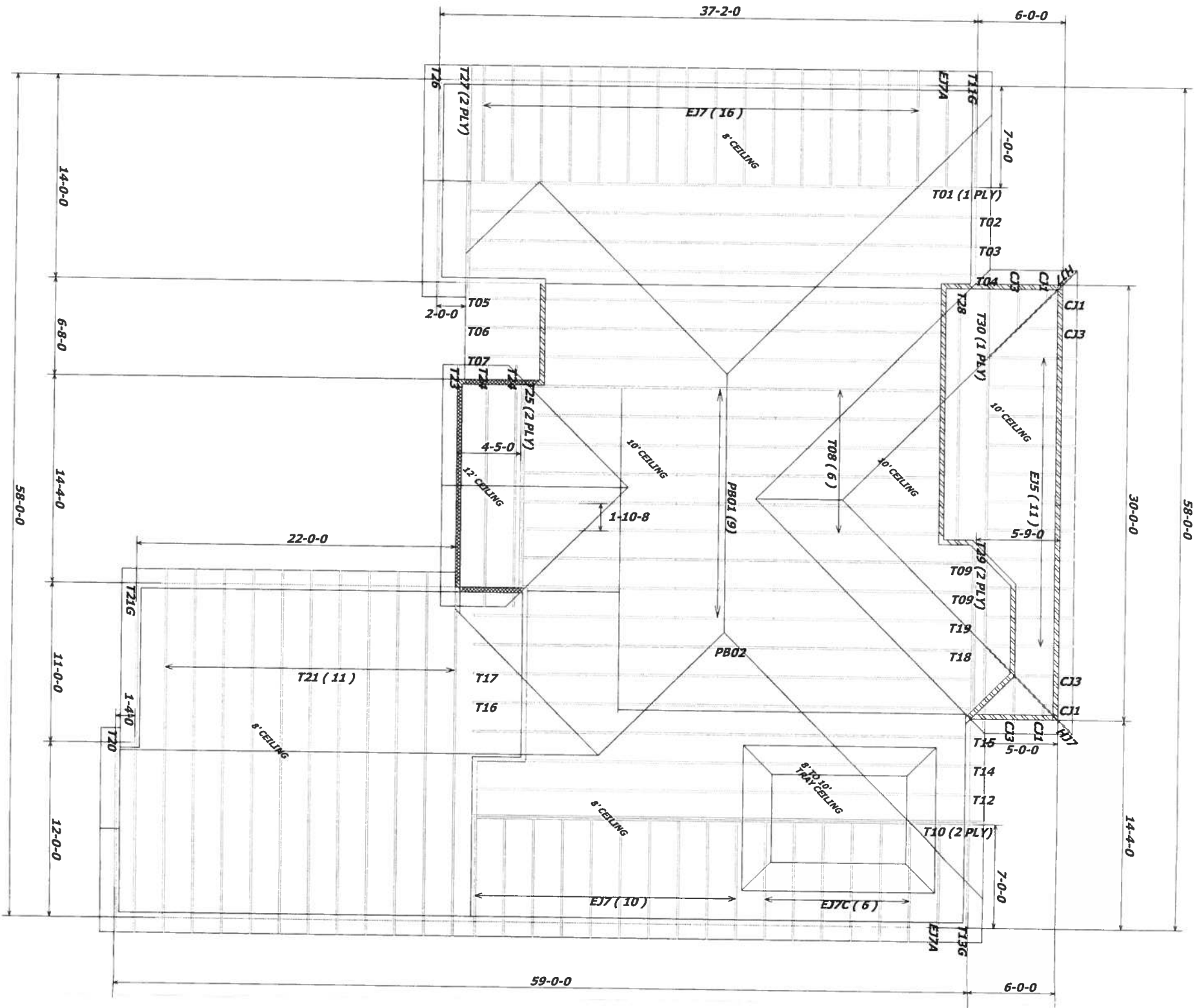
Sanford  
PHONE: 407-322-0059 FAX: 407-322-5553

BUILDER  
COMPASS BUILDERS

LOT 40 -- ROLLING MEADOWS

CUSTOM  
SCALE NTS

DATE 04-20-06  
STAMP BY RAL  
L161089



\*\*\* HANGER SCHEDULE \*\*\*  
17 -- HTU26