

ANDERSEN CORPORATION

200 SERIES PERMA-SHIELD GLIDING PATIO DOOR
(NON-HVHZ)(NON-IMPACT)

INSTALLATION NOTES:

1. ONE (1) INSTALLATION ANCHOR IS REQUIRED AT EACH ANCHOR LOCATION SHOWN, UNLESS OTHERWISE STATED.
2. THE NUMBER OF INSTALLATION ANCHORS DEPICTED IS THE MINIMUM NUMBER OF ANCHORS TO BE USED FOR PRODUCT INSTALLATION.
3. INSTALL INDIVIDUAL INSTALLATION ANCHORS WITHIN A TOLERANCE OF ±1/2 INCH OF THE DEPICTED LOCATION IN THE ANCHOR LAYOUT DETAIL (I.E., WITHOUT CONSIDERATION OF TOLERANCES). TOLERANCES ARE NOT CUMULATIVE FROM ONE INSTALLATION ANCHOR TO THE NEXT.
4. **THROUGH FRAME:** FOR INSTALLATION INTO 2X BUCK OR FRAMING USE #10 WOOD SCREWS OF SUFFICIENT LENGTH TO ACHIEVE 1 1/2 INCH MINIMUM EMBEDMENT INTO WOOD SUBSTRATE AND MAINTAIN MINIMUM 3/4" EDGE DISTANCE.
5. **THROUGH FRAME:** FOR INSTALLATION THROUGH 1X BUCK TO CONCRETE/MASONRY, OR DIRECTLY INTO CONCRETE/MASONRY, USE 3/16" ITW TAPCONS OF SUFFICIENT LENGTH TO ACHIEVE 1 1/4 INCH MINIMUM EMBEDMENT AND MAINTAIN MINIMUM 2" EDGE DISTANCE.
10. **THROUGH FRAME:** FOR INSTALLATION INTO METAL SUBSTRATES USE #10 GRADE 5 SELF-DRILLING OR SELF-TAPPING SCREWS OF SUFFICIENT LENGTH TO ACHIEVE 3 THREADS MINIMUM PENETRATION BEYOND METAL FRAME SUBSTRATE AND MAINTAIN MINIMUM 3/4" EDGE DISTANCE.
11. MINIMUM EMBEDMENT AND EDGE DISTANCE EXCLUDE WALL FINISHES, INCLUDING BUT NOT LIMITED TO STUCCO, FOAM, BRICK VENEER, AND SIDING.
12. INSTALLATION ANCHORS AND ASSOCIATED HARDWARE MUST BE MADE OF CORROSION RESISTANT MATERIAL OR HAVE A CORROSION RESISTANT COATING.
13. FOR HOLLOW BLOCK AND GROUT FILLED BLOCK, DO NOT INSTALL INSTALLATION ANCHORS INTO MORTAR JOINTS. EDGE DISTANCE IS MEASURED FROM FREE EDGE OF BLOCK OR EDGE OF MORTAR JOINT INTO FACE SHELL OF BLOCK.
14. INSTALLATION ANCHORS SHALL BE INSTALLED IN ACCORDANCE WITH ANCHOR MANUFACTURER'S INSTALLATION INSTRUCTIONS, AND ANCHORS SHALL NOT BE USED IN SUBSTRATES WITH STRENGTHS LESS THAN THE MINIMUM STRENGTH SPECIFIED BY THE ANCHOR MANUFACTURER.
15. INSTALLATION ANCHOR CAPACITIES FOR PRODUCTS HEREIN ARE BASED ON SUBSTRATE MATERIALS WITH THE FOLLOWING PROPERTIES:

A. WOOD - MINIMUM SPECIFIC GRAVITY OF 0.55.

B. CONCRETE - MINIMUM COMPRESSIVE STRENGTH OF 3000 PSI.

C. MASONRY - STRENGTH CONFORMANCE TO ASTM C-90. MIN BLOCK COMPRESSIVE STRENGTH 2000 PSI.

D. STEEL - MINIMUM YIELD STRENGTH OF 33 KSI. MINIMUM WALL THICKNESS OF 33 MILS (20 GAUGE).

E. ALUMINUM - MINIMUM 6063-T5 ALLOY. MINIMUM WALL THICKNESS OF 1/8".

GENERAL NOTES:

1. THE PRODUCT SHOWN HEREIN IS DESIGNED AND MANUFACTURED TO COMPLY WITH THE CURRENT FLORIDA BUILDING CODE (FBC), **EXCLUDING** HVHZ AND HAS BEEN EVALUATED ACCORDING TO THE FOLLOWING:

AAMA/WDMA/CSA 101/I.S.2/A440-11
2. ADEQUACY OF THE EXISTING STRUCTURAL CONCRETE/MASONRY, 2X AND METAL STUD FRAMING AS A MAIN WIND FORCE RESISTING SYSTEM CAPABLE OF WITHSTANDING AND TRANSFERRING APPLIED PRODUCT LOADS TO THE FOUNDATION IS THE RESPONSIBILITY OF THE ENGINEER OR ARCHITECT OF RECORD FOR THE PROJECT OF INSTALLATION.
3. 1X AND 2X BUCKS (WHEN USED) SHALL BE DESIGNED AND ANCHORED TO PROPERLY TRANSFER ALL LOADS TO THE STRUCTURE. BUCK DESIGN AND INSTALLATION IS THE RESPONSIBILITY OF THE ENGINEER OR ARCHITECT OF RECORD FOR THE PROJECT OF INSTALLATION.
4. THE INSTALLATION DETAILS DESCRIBED HEREIN ARE GENERIC AND MAY NOT REFLECT ACTUAL CONDITIONS FOR A SPECIFIC SITE. IF SITE CONDITIONS CAUSE INSTALLATION TO DEVIATE FROM THE REQUIREMENTS DETAILED HEREIN, A LICENSED ENGINEER OR ARCHITECT SHALL PREPARE SITE SPECIFIC DOCUMENTS FOR USE WITH THIS DOCUMENT.
5. APPROVED IMPACT PROTECTIVE SYSTEM IS **REQUIRED** TO PROTECT THIS PRODUCT IN AREAS REQUIRING IMPACT RESISTANCE.
6. DOOR MATERIAL: WOOD AND VINYL
7. GLASS MEETS THE REQUIREMENTS OF ASTM E1300 GLASS CHARTS. SEE SHEET 4 FOR GLAZING DETAILS.
8. DESIGNATIONS "X" AND "O" STAND FOR THE FOLLOWING:

X: ACTIVE PANEL

O: STATIONARY PANEL
9. CUSTOM SIZES AVAILABLE UPON REQUEST. CUSTOM DESIGN PRESSURE WILL BE ASSIGNED EQUAL TO NEXT LARGER STANDARD SIZE.

TABLE OF CONTENTS	
SHEET	SHEET DESCRIPTION
1	GENERAL AND INSTALLATION NOTES
2	ELEVATIONS & ANCHOR LAYOUTS
3	VERTICAL SECTIONS
4	VERTICAL SECTIONS & GLAZING DETAILS
5	HORIZONTAL SECTIONS
6	SIDELITE MULLIONS
7	MULLION ANCHOR DETAILS

DESIGN PRESSURE RATING				
PRODUCT	O.A. SIZE	CONFIGURATION	DESIGN PRESSURE	MISSILE IMPACT RATING
PSGPD4380S IG	50 3⁄8" X 95 1⁄2"	O	+45.0 / -45.0 PSF	NON-IMPACT
PSGPD8180AS IG	96" X 95 1⁄2"	XO	+25.0 / -25.0 PSF	
PSGPD81611AS DPUP IG	96" X 82 3⁄8"	XO	+40.0 / -40.0 PSF	



100 FOURTH AVE NORTH
BAYPORT, MN 55003-1096
PH: (651) 264-5150 FX: (651) 264-5485

TITLE: 200 SERIES PERMA-SHIELD
GLIDING PATIO DOOR
(NON-HVHZ)(NON-IMPACT)
GENERAL AND INSTALLATION NOTES

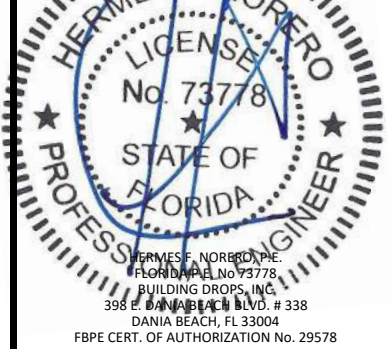
PREPARED BY:
BUILDING DROPS, INC.
398 E. DANIA BEACH BLVD., STE. 338
DANIA BEACH, FL 33004
PH: (954) 959-8478
FAX: (954) 744-4738
WEB: www.buildingdrops.com



REMARKS	BY	DATE
7TH FBC CODE CHANGE	SR	3.18.20

THE INSTALLATION DETAILS DESCRIBED HEREIN ARE GENERIC AND MAY NOT REFLECT ACTUAL CONDITIONS OR A SPECIFIC SITE. IF SITE CONDITIONS CAUSE INSTALLATION TO DEVIATE FROM THE REQUIREMENTS DETAILED HEREIN, A LICENSED ENGINEER OR ARCHITECT SHALL PREPARE SITE SPECIFIC DOCUMENTS FOR USE WITH THIS DOCUMENT

Digitally signed by Hermes F Norero
Reason: I am approving this document
Date: 2020.10.07 20:38:27 +02'00'



FL #:
FL14429

DATE: 10.16.17

DWG. BY: SM
CHK. BY: HFN

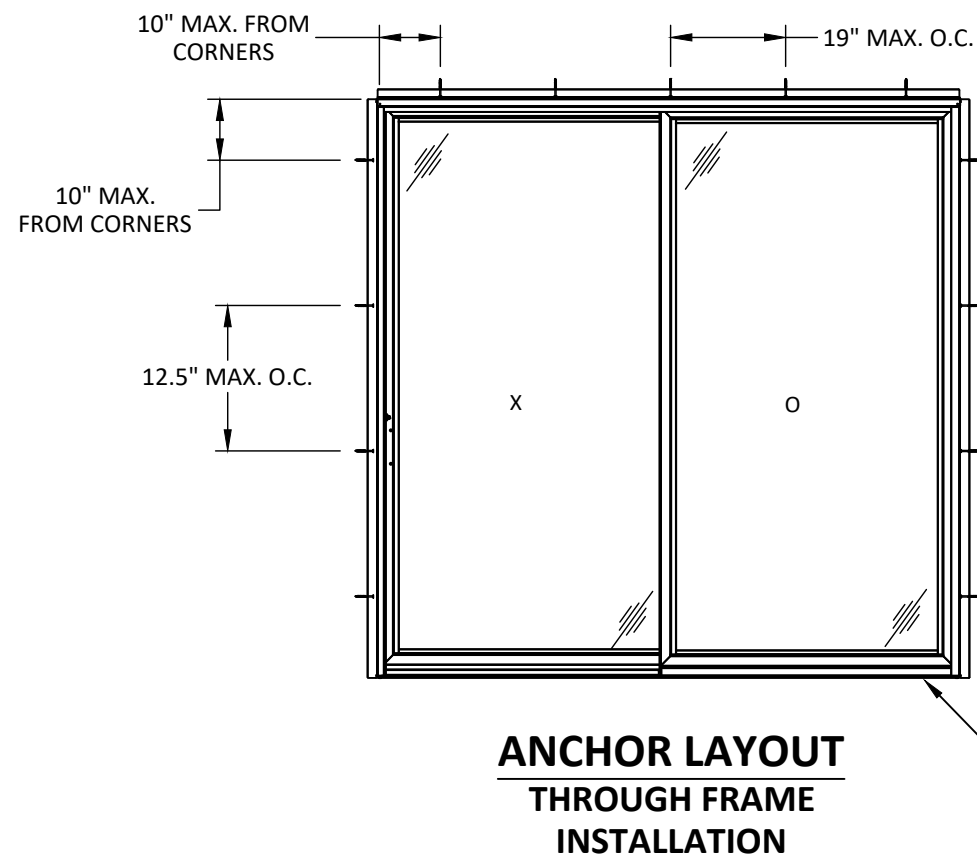
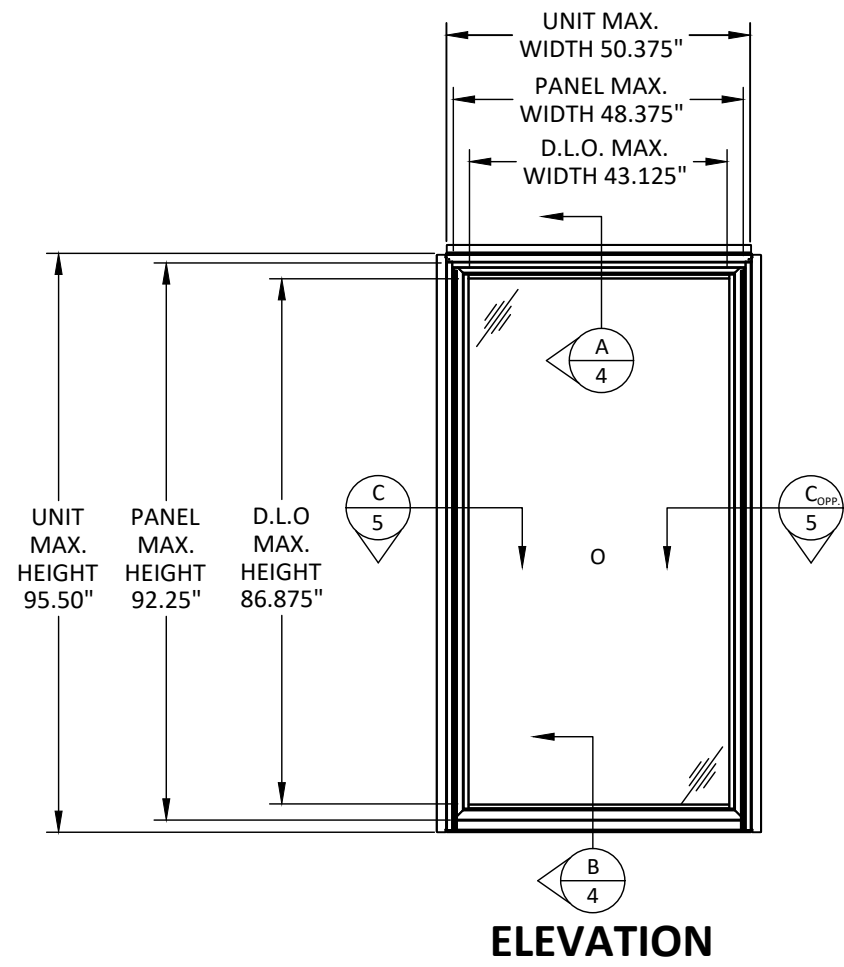
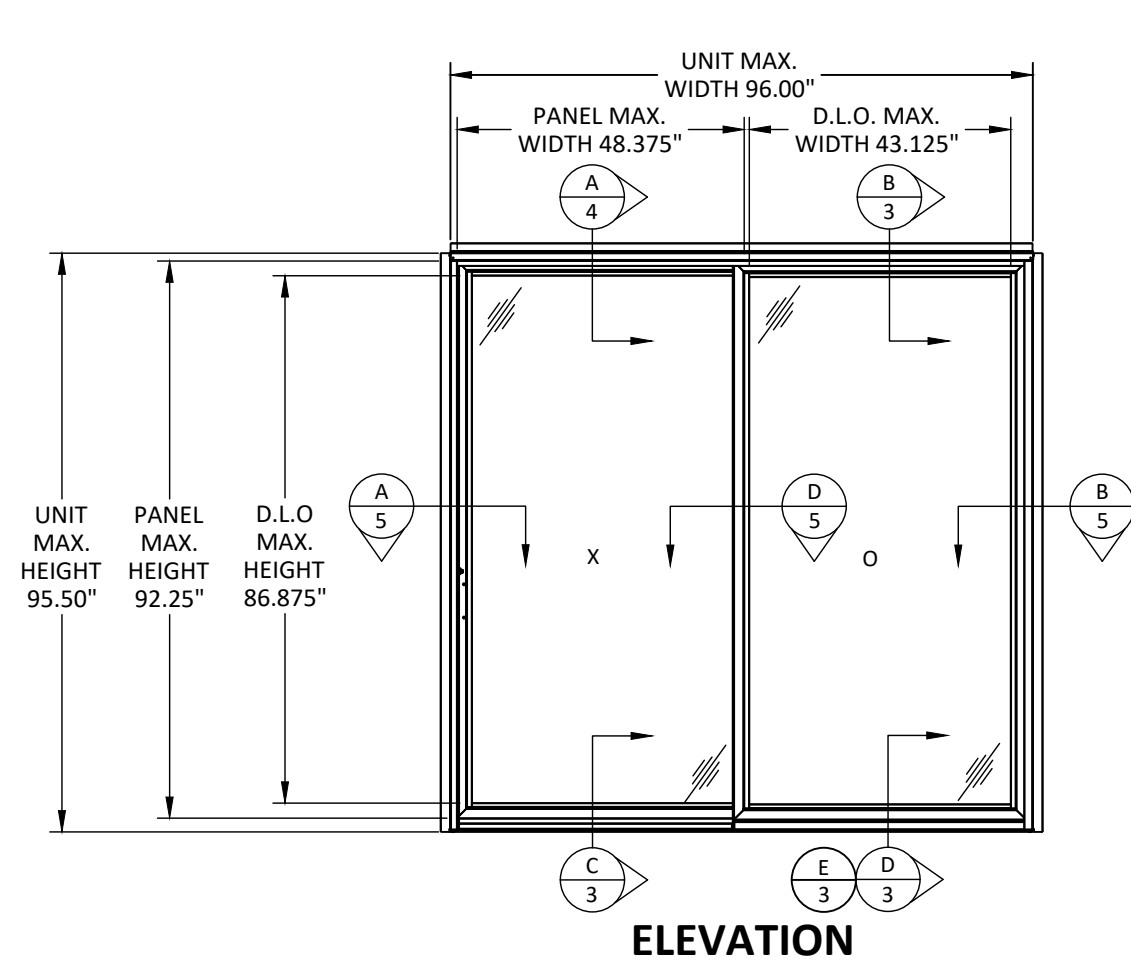
SCALE: NTS

DWG. #: AWD191

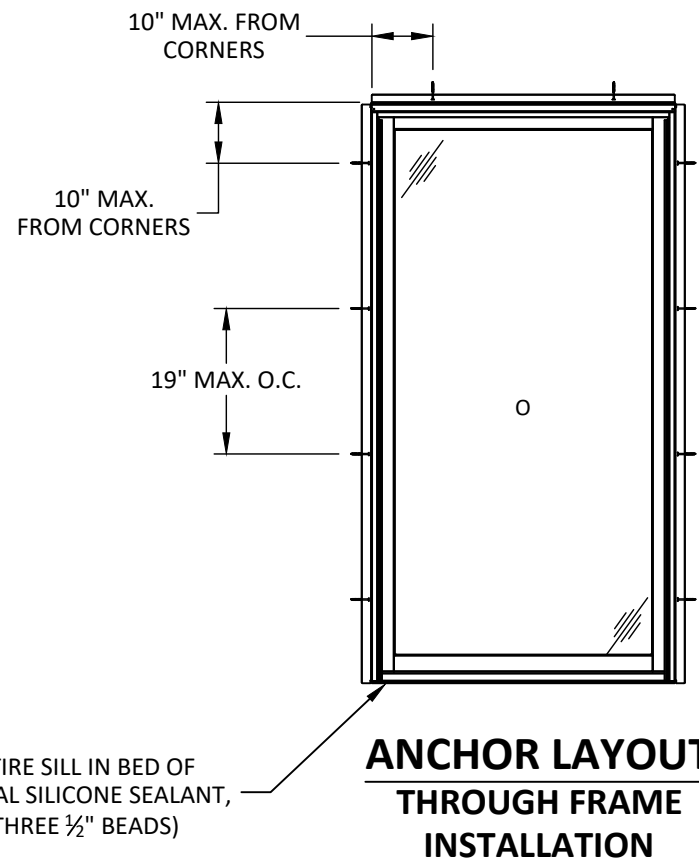
SHEET:

1

s:\projects\andersen windows\cc-20-0224 - code change - fbc 2020 (version 7) code change\revisions\114429.dwg 7) code change\revisions\114429.dwg 14429.3\awd191.200 series permashield gpd 2017-10-17.dwg 9/29/2020 4:02 PM



SET ENTIRE SILL IN BED OF STRUCTURAL SILICONE SEALANT, (MIN THREE ½" BEADS)



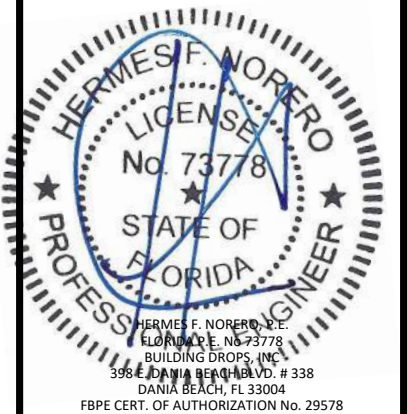
100 FOURTH AVE NORTH
BAYPORT, MN 55003-1096
PH: (651) 264-5150 FX: (651) 264-5485

TITLE: 200 SERIES PERMA-SHIELD
GLIDING PATIO DOOR
(NON-HVHZ)/(NON-IMPACT)
ELEVATIONS & ANCHOR LAYOUTS

PREPARED BY:
BUILDING DROPS, INC.
398 E. DANIA BEACH BLVD., STE. 338
DANIA BEACH, FL 33004
PH: (954) 399-8478
FAX: (954) 744-4738
WEB: www.buildingdrops.com

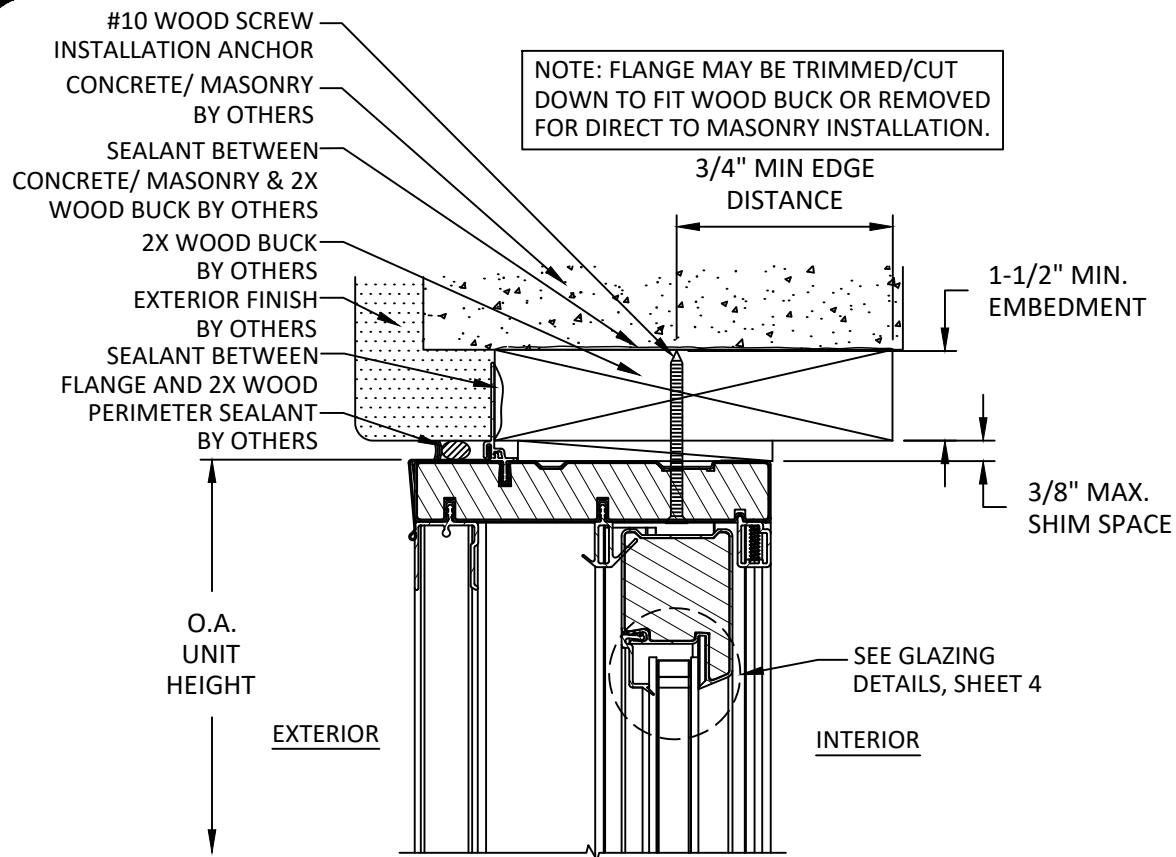
REMARKS	BY	DATE
7TH FBC CODE CHANGE	SR	8.18.20

THE INSTALLATION DETAILS DESCRIBED HEREIN ARE GENERIC AND MAY NOT REFLECT ACTUAL CONDITIONS OR A SPECIFIC SITE. IF SITE CONDITIONS CAUSE INSTALLATION TO DEVIATE FROM THE REQUIREMENTS DETAILED HEREIN, A LICENSED ENGINEER OR ARCHITECT SHALL PREPARE SITE SPECIFIC DOCUMENTS FOR USE WITH THIS DOCUMENT

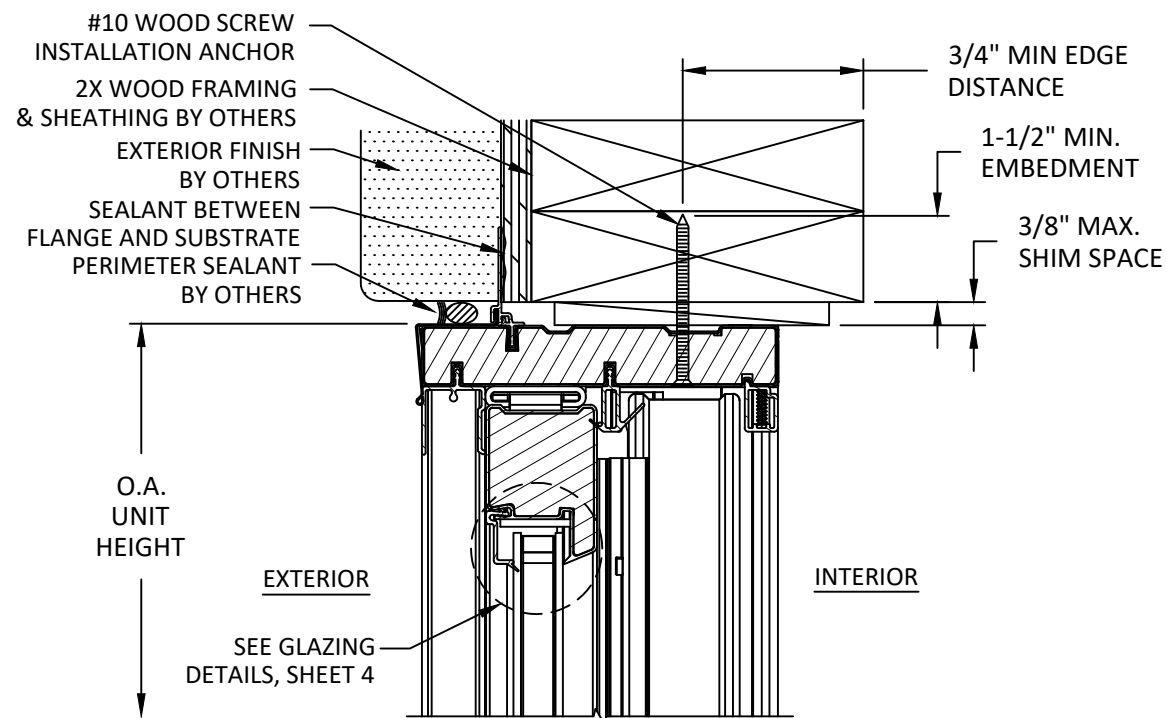


FL #: **FL14429**
DATE: **10.16.17**
DWG. BY: **SM** CHK. BY: **HFN**
SCALE: **NTS**
DWG. #: **AWD191**
SHEET:

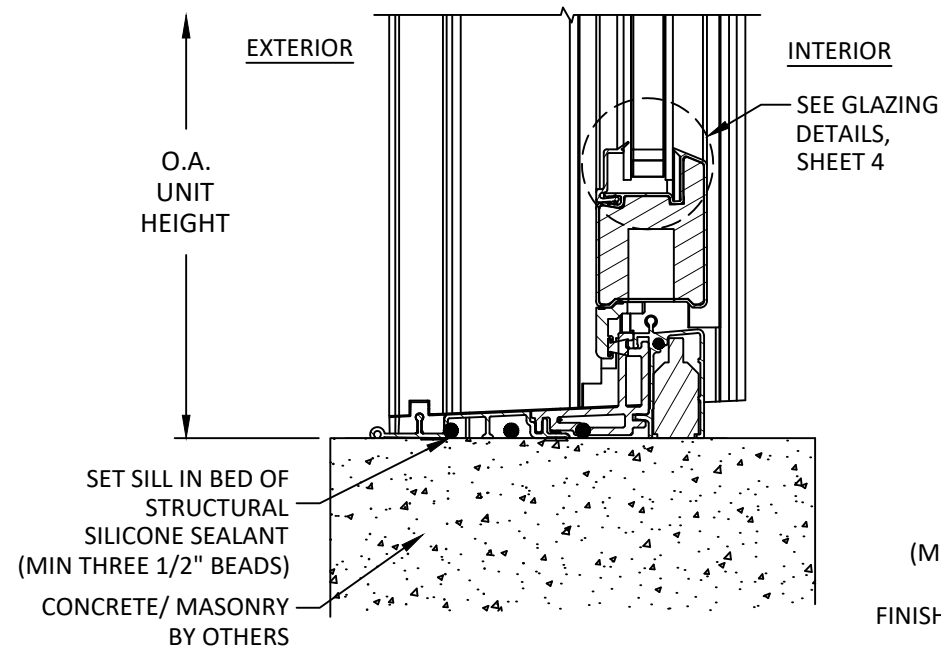
s:\projects\andersen windows\cc-20-0224 - code change - fbc 2020 (version 7) code change\revisions\114429.dwg; 14429.3\awd191.200 series permashield gpd 2017-10-17.dwg
9/29/2020 4:02 PM



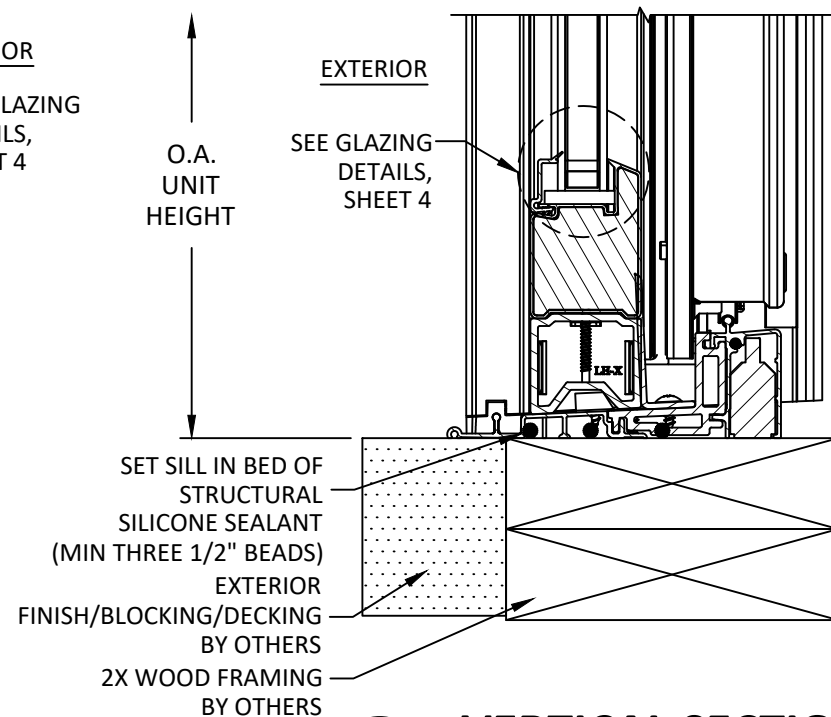
A
3 **VERTICAL SECTION**
HEAD - 2X WOOD/CONCRETE/MASONRY
THROUGH FRAME



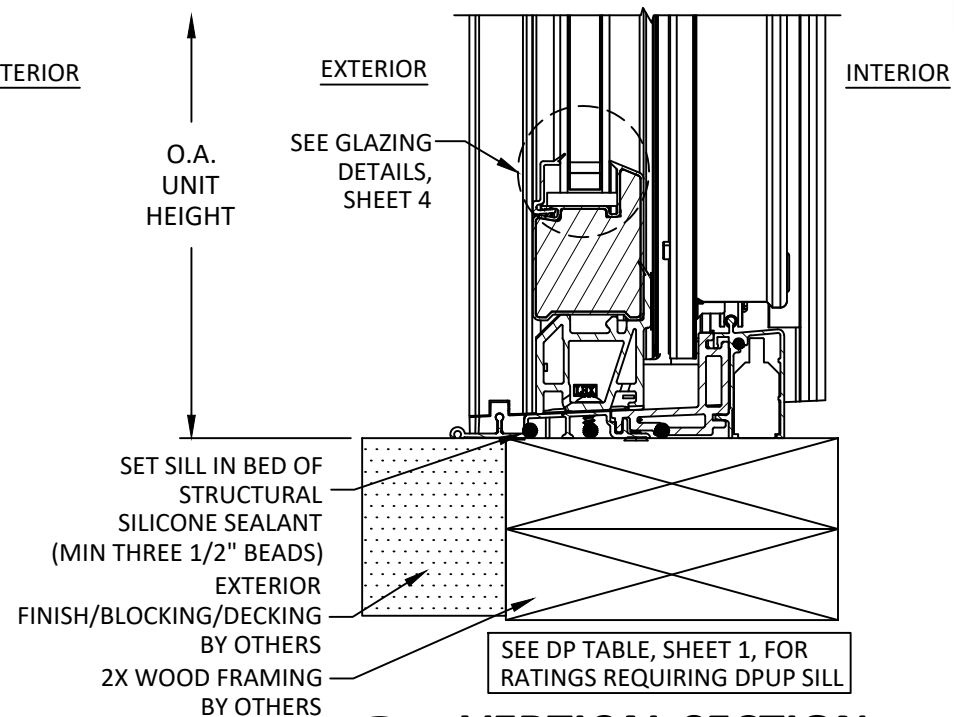
B
3 **VERTICAL SECTION**
HEAD - 2X WOOD FRAMING
THROUGH FRAME



C
3 **VERTICAL SECTION**
SILL - CONCRETE
THROUGH FRAME



D
3 **VERTICAL SECTION**
STANDARD SILL - 2X WOOD
THROUGH FRAME



E
3 **VERTICAL SECTION**
DPUP SILL - 2X WOOD
THROUGH FRAME



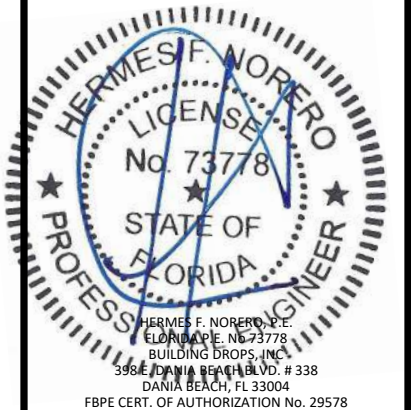
100 FOURTH AVE NORTH
BAYPORT, MN 55003-1096
PH: (651) 264-5150 FX: (651) 264-5485

TITLE: 200 SERIES PERMA-SHIELD
GLIDING PATIO DOOR
(NON-HVHZ)(NON-IMPACT)
VERTICAL SECTIONS

PREPARED BY:
BUILDING DROPS, INC.
398 E. DANIA BEACH BLVD., STE. 338
DANIA BEACH, FL 33004
PH: (954) 399-8478
FAX: (954) 744-4738
WEB: www.buildingdrops.com

REMARKS	BY	DATE
7TH FBC CODE CHANGE	SR	3.18.20

THE INSTALLATION DETAILS DESCRIBED HEREIN
ARE GENERIC AND MAY NOT REFLECT ACTUAL CONDITIONS
OR A SPECIFIC SITE. IF SITE CONDITIONS CAUSE INSTALLATION
TO DEVIATE
FROM THE REQUIREMENTS DETAILED HEREIN, A LICENSED
ENGINEER OR ARCHITECT SHALL
PREPARE SITE SPECIFIC DOCUMENTS FOR USE
WITH THIS DOCUMENT



FL #:
FL14429

DATE: **10.16.17**

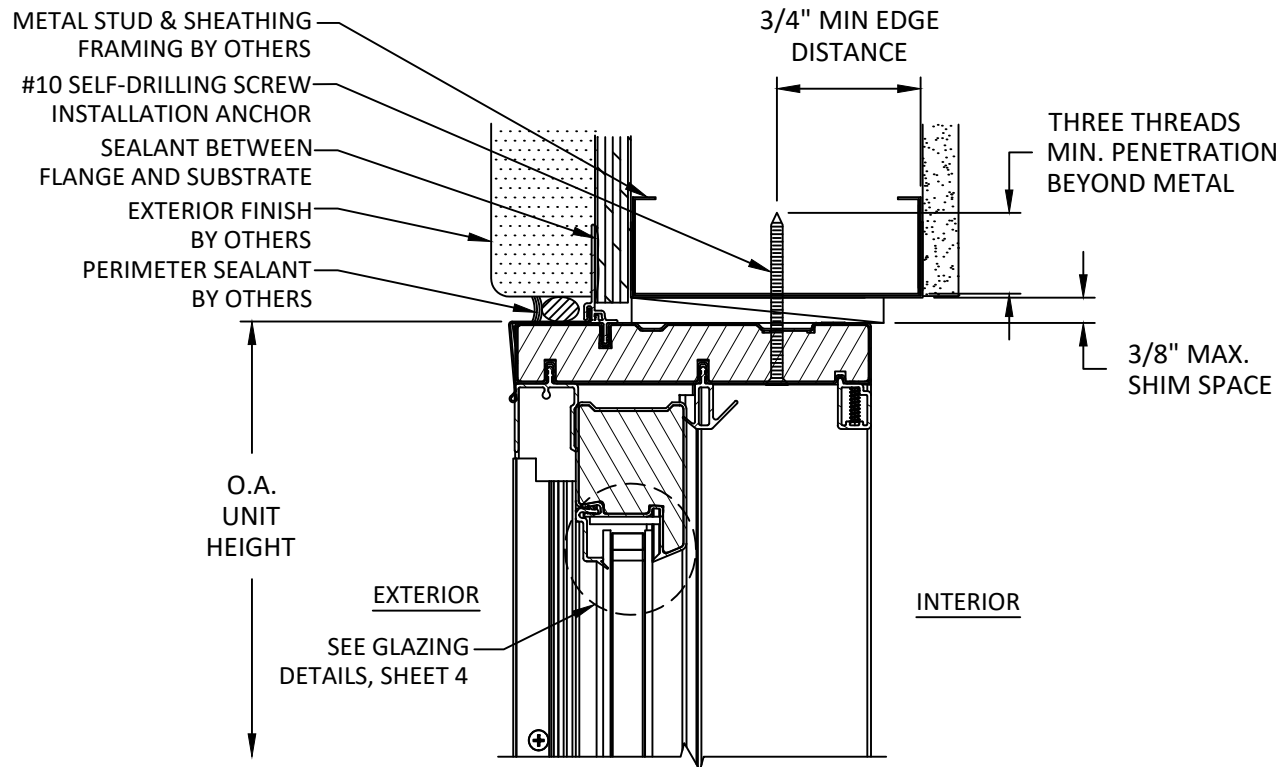
DWG. BY: **SM** CHK. BY: **HFN**

SCALE: **NTS**

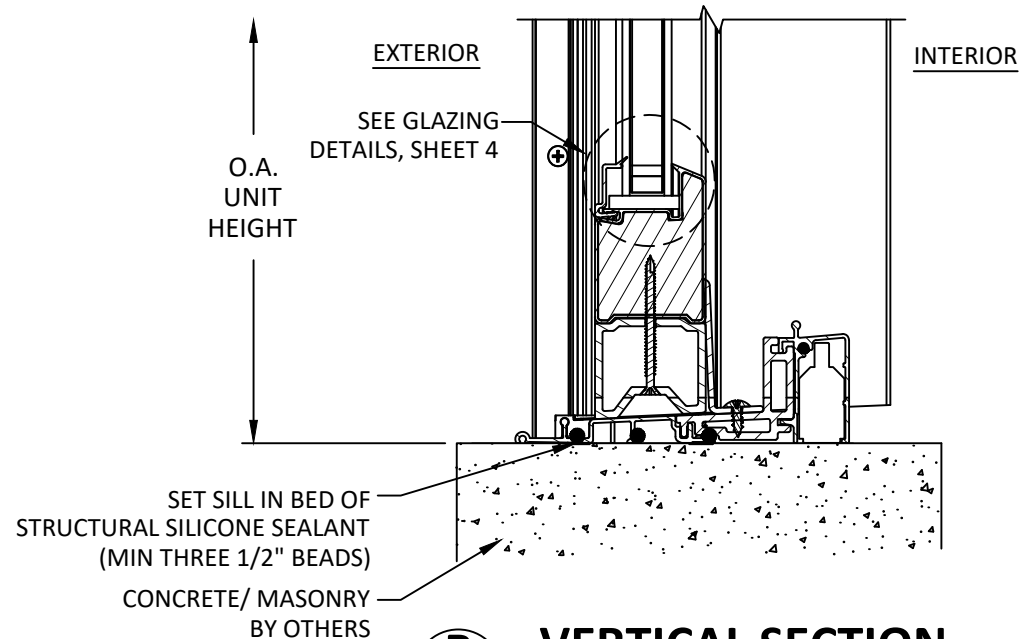
DWG. #: **AWD191**

SHEET:
3

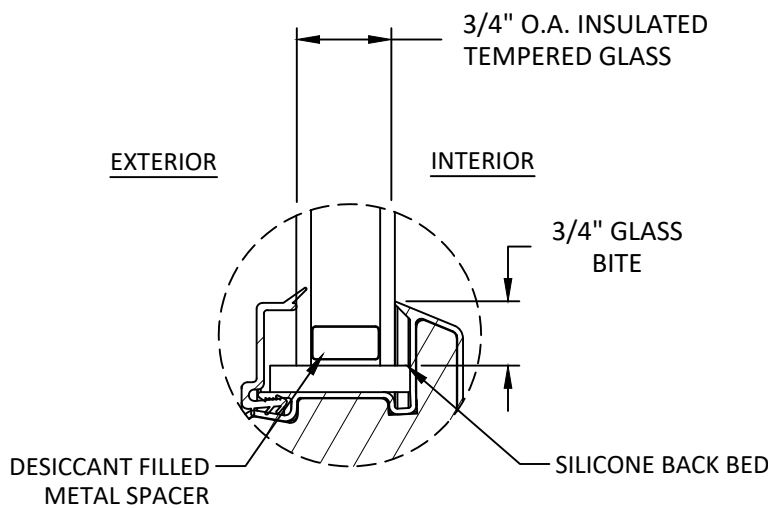
s:\projects\andersen windows\cc-20-0224 - code change - fbc 2020 (version 7) code change\revisions\114429.dwg 114429 3 awd191 200 series permashield gpd 2017-10-17.dwg 9/29/2020 4:02 PM



A
4 **VERTICAL SECTION**
HEAD - METAL SUBSTRATE
THROUGH FRAME



B
4 **VERTICAL SECTION**
SILL - CONCRETE
THROUGH FRAME



GLAZING DETAIL 1

- NOTE:**
1. ALL GLAZING MEETS SAFETY GLAZING REQUIREMENTS AS PER CH 24 OF THE FBC.
 2. SETTING BLOCK DUROMETER HARDNESS OF 70-90 (SHORE A) AS REFERENCED IN CHAPTER 24.
 3. SETTING BLOCKS TO BE LOCATED AT 1/4 SPAN LENGTH FOR GLASS WIDER THAN 36" AS PER CHAPTER 24.
 4. D.L.O. MAY NOT EXCEED MAX DIMENSIONS SHOWN IN ELEVATIONS.



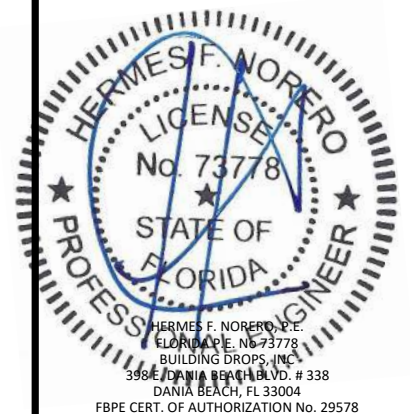
100 FOURTH AVE NORTH
BAYPORT, MN 55003-1096
PH: (651) 264-5150 FX: (651) 264-5485

TITLE: 200 SERIES PERMA-SHIELD
GLIDING PATIO DOOR
(NON-HVHZ)/(NON-IMPACT)
VERTICAL SECTIONS

PREPARED BY:
BUILDING DROPS, INC.
398 E. DANIA BEACH BLVD., STE. 338
DANIA BEACH, FL 33004
PH: (954) 399-8478
FAX: (954) 744-4738
WEB: www.buildingdrops.com

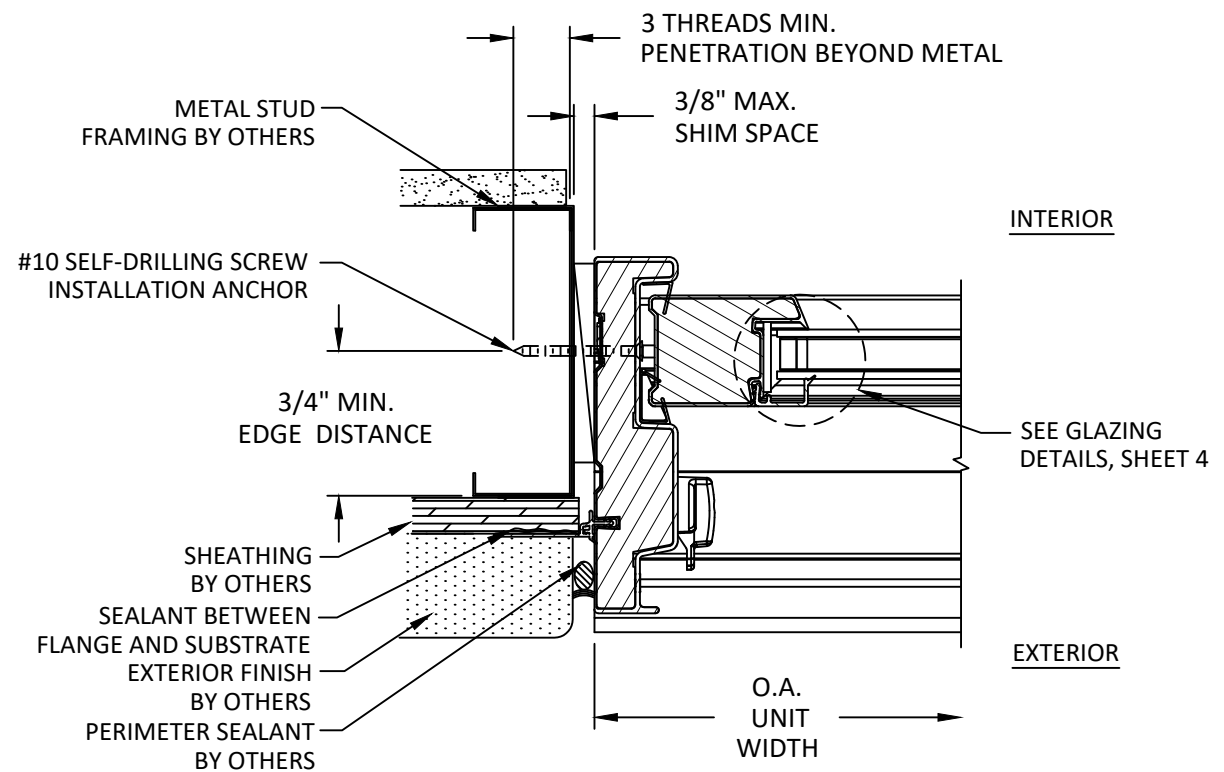
REMARKS	BY	DATE
7TH FBC CODE CHANGE	SR	3.18.20

THE INSTALLATION DETAILS DESCRIBED HEREIN ARE GENERIC AND MAY NOT REFLECT ACTUAL CONDITIONS OR A SPECIFIC SITE. IF SITE CONDITIONS CAUSE INSTALLATION TO DEVIATE FROM THE REQUIREMENTS DETAILED HEREIN, A LICENSED ENGINEER OR ARCHITECT SHALL PREPARE SITE SPECIFIC DOCUMENTS FOR USE WITH THIS DOCUMENT

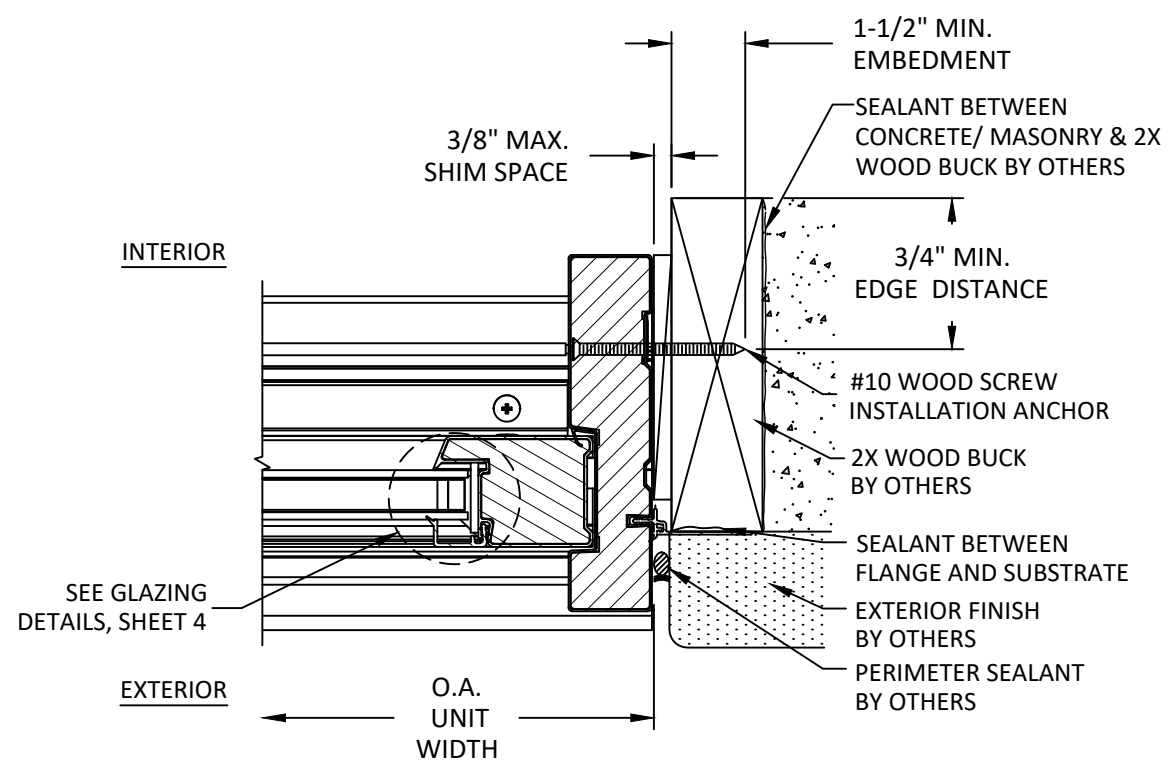


FL #:	FL14429
DATE:	10.16.17
DWG. BY:	SM
CHK. BY:	HFN
SCALE:	NTS
DWG. #:	AWD191
SHEET:	4

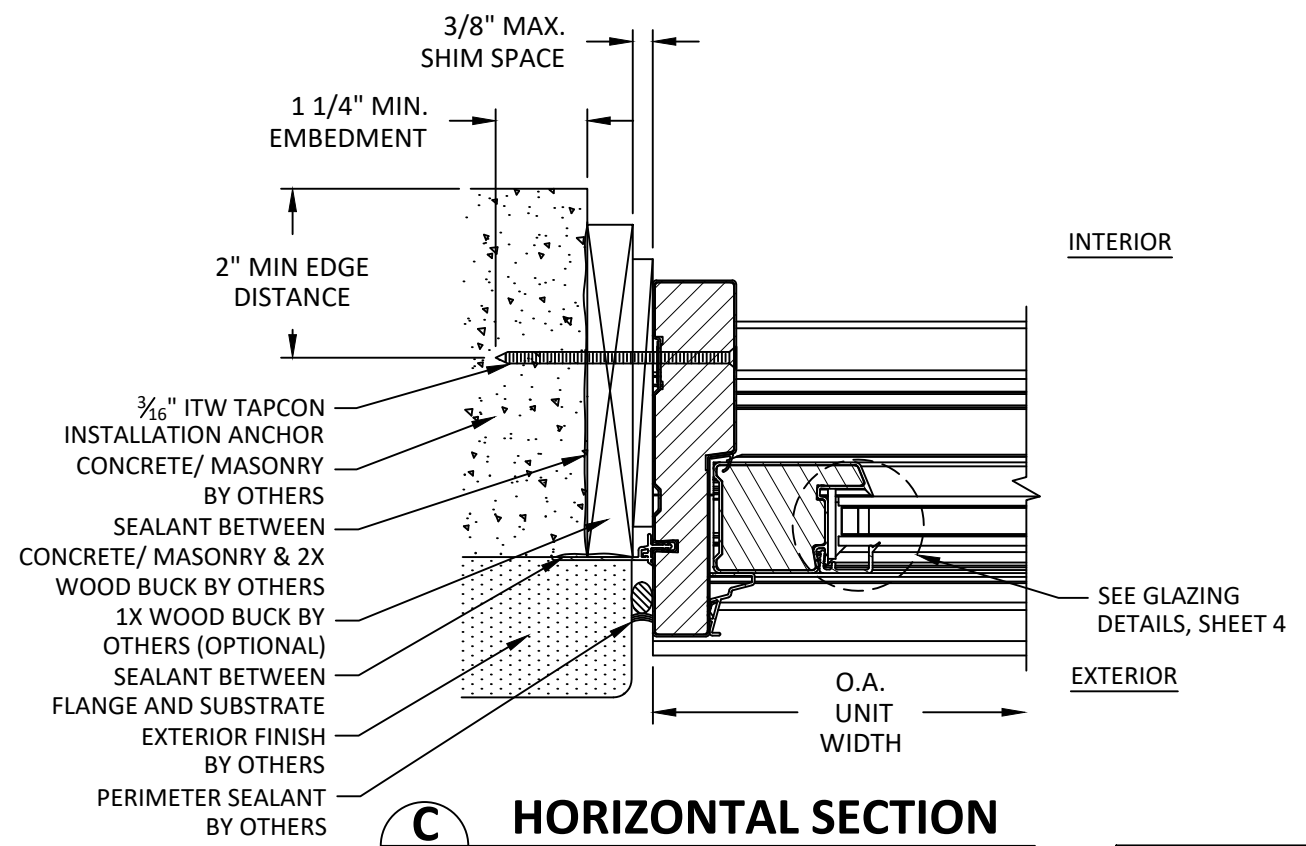
s:\projects\andersen\windows\cc-20-0224 - code change - fbc 2020 (version 7) code change\revisions\114429\3\awd191_200 series permashield.rvt 2017-10-17.dwg
9/29/2020 4:02 PM



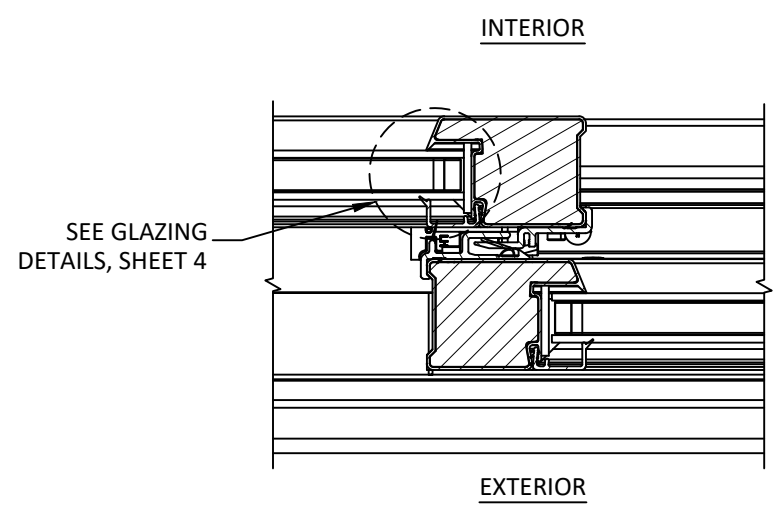
A
5 **HORIZONTAL SECTION**
JAMB - METAL STUD FRAME THROUGH FRAME



B
5 **HORIZONTAL SECTION**
JAMB - 2X WOOD BUCK THROUGH FRAME



C
5 **HORIZONTAL SECTION**
JAMB - 1X WOOD/CONCRETE/MASONRY THROUGH FRAME



D
5 **HORIZONTAL SECTION**
INTERLOCK

NOTE: FLANGE MAY BE TRIMMED/CUT DOWN TO FIT 1X BUCK OR REMOVED FOR DIRECT TO MASONRY INSTALLATION.



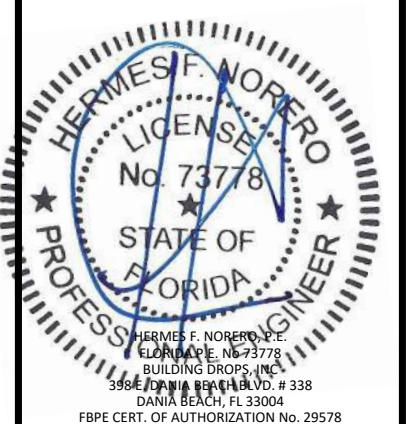
100 FOURTH AVE NORTH
BAYPORT, MN 55003-1096
PH: (651) 264-5150 FX: (651) 264-5485

TITLE: 200 SERIES PERMA-SHIELD GLIDING PATIO DOOR (NON-HVHZ)/(NON-IMPACT) HORIZONTAL SECTIONS

PREPARED BY: BUILDING DROPS, INC.
398 E. DANIA BEACH BLVD., STE. 338
DANIA BEACH, FL 33004
PH: (954) 399-8478
FAX: (954) 744-4738
WEB: www.buildingdrops.com

REMARKS	BY	DATE
7TH FBC CODE CHANGE	SR	3.18.20

THE INSTALLATION DETAILS DESCRIBED HEREIN ARE GENERIC AND MAY NOT REFLECT ACTUAL CONDITIONS OR A SPECIFIC SITE. IF SITE CONDITIONS CAUSE INSTALLATION TO DEVIATE FROM THE REQUIREMENTS DETAILED HEREIN, A LICENSED ENGINEER OR ARCHITECT SHALL PREPARE SITE SPECIFIC DOCUMENTS FOR USE WITH THIS DOCUMENT



FL #: **FL14429**

DATE: **10.16.17**

DWG. BY: **SM** CHK. BY: **HFN**

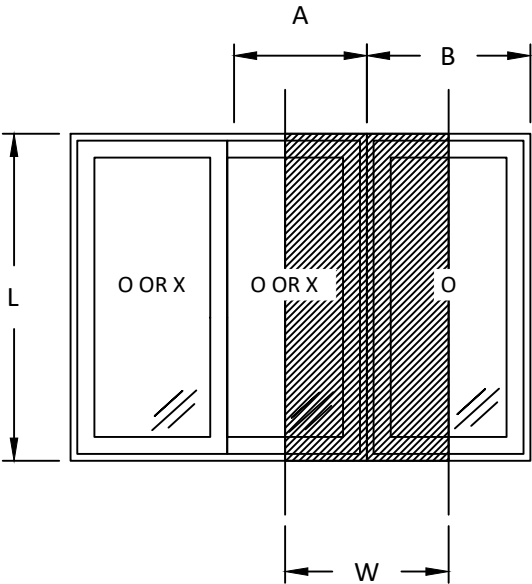
SCALE: **NTS**

DWG. #: **AWD191**

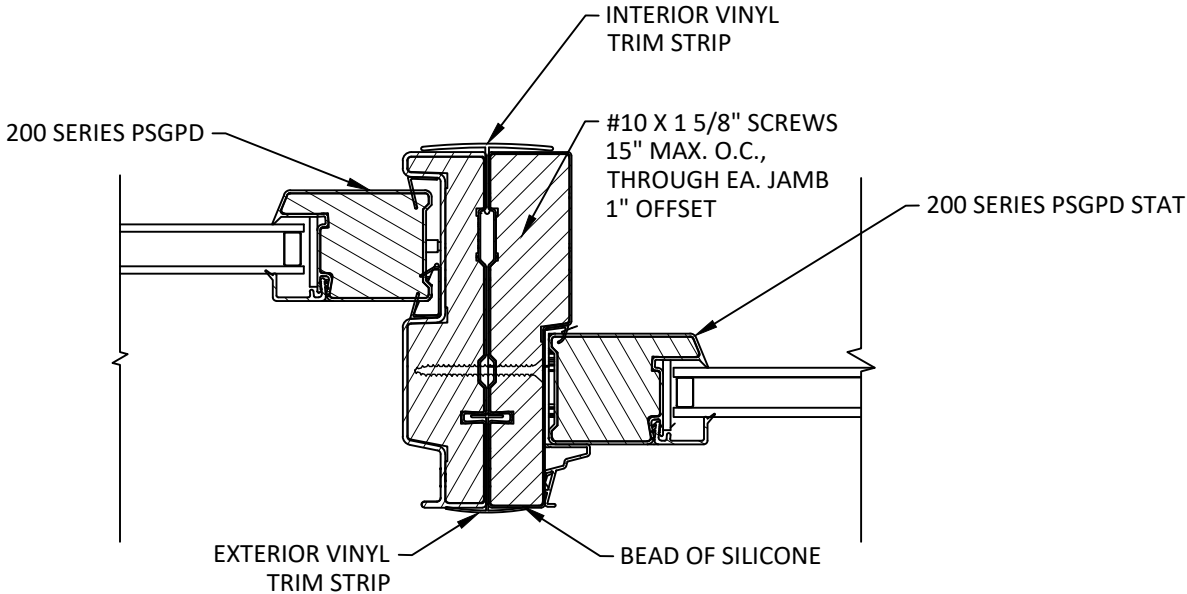
SHEET: **5** OF 7

L - MULL LENGTH (IN)	W - TRIBUTARY WIDTH (IN)										
	18.0	21.0	24.0	27.0	30.0	33.0	36.0	39.0	42.0	45.0	48.0
36.0	50.0	50.0	50.0	50.0	50.0	50.0	50.0	50.0	50.0	50.0	50.0
42.0	50.0	50.0	50.0	50.0	50.0	50.0	50.0	50.0	50.0	50.0	50.0
48.0	50.0	50.0	50.0	50.0	50.0	50.0	50.0	50.0	50.0	50.0	50.0
54.0	50.0	50.0	50.0	50.0	50.0	50.0	50.0	50.0	50.0	50.0	50.0
60.0	50.0	50.0	50.0	50.0	50.0	50.0	50.0	50.0	50.0	50.0	50.0
66.0	50.0	50.0	50.0	50.0	50.0	50.0	50.0	49.8	47.8	46.1	44.8
72.0	50.0	50.0	50.0	50.0	50.0	49.3	46.5	44.1	42.2	40.6	39.2
78.0	50.0	50.0	50.0	50.0	47.8	44.5	41.8	39.6	37.7	36.2	34.8
84.0	50.0	50.0	50.0	47.5	43.6	40.6	38.0	35.9	34.1	32.6	31.4
90.0	50.0	50.0	48.3	43.7	40.1	37.2	34.8	32.9	31.2	29.7	28.5
96.0	50.0	50.0	44.8	40.6	37.2	34.4	32.2	30.3	28.7	27.3	26.1

- NOTE:
- MULLION CHART APPLIES TO MULLION ASSEMBLIES, SEE TYP. DETAIL A/6, WHEN USED TO MULL DOORS IN CONFIGURATIONS SHOWN IN TYP. ELEVATION A AT RIGHT (2 PANEL XO ONLY).
 - DESIGN PRESSURE VALUES ARE POSITIVE AND NEGATIVE IN PSF.
 - MAXIMUM DEFLECTION HAS BEEN LIMITED TO L/175.
 - DESIGN PRESSURE OF ASSEMBLY IS LIMITED TO THE LESSER DESIGN PRESSURE OF THE JAMB-TO-JAMB WOOD MULLION OR THE INDIVIDUAL DOOR UNIT OF INSTALLATION.
 - MULLION CHART ABOVE APPLIES TO MULLED ASSEMBLIES CONSISTING OF 200 SERIES PERMA-SHIELD GLIDING PATIO DOOR ACT-STAT UNITS AND STAT UNITS.
 - ADJACENT DOORS SHALL BE FASTENED TO THE ROUGH OPENING WITH ADDITIONAL ANCHORS IN ACCORDANCE WITH DETAILS A/7 & B/7, SHEET 7.



ELEVATION A
TRIBUTARY WIDTH = W = (A+B)/2



A
6 HORIZONTAL SECTION
PSGPD STAT - PSGPD



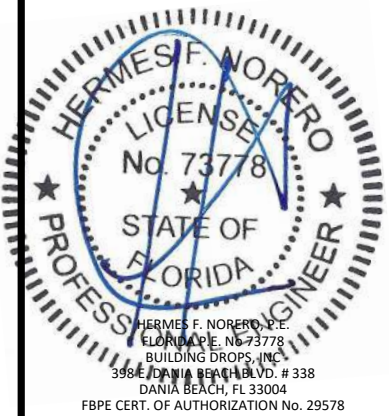
100 FOURTH AVE NORTH
BAYPORT, MN 55003-1096
PH: (651) 264-5150 FX: (651) 264-5485

TITLE: 200 SERIES PERMA-SHIELD
GLIDING PATIO DOOR
(NON-HVHZ)/(NON-IMPACT)
MULLION DETAILS

PREPARED BY:
BUILDING DROPS, INC.
398 E. DANIA BEACH BLVD., STE. 338
DANIA BEACH, FL 33004
PH: (954) 399-8478
FAX: (954) 744-4738
WEB: www.buildingdrops.com

REMARKS	BY	DATE
7TH FBC CODE CHANGE	SR	3.18.20

THE INSTALLATION DETAILS DESCRIBED HEREIN ARE GENERIC AND MAY NOT REFLECT ACTUAL CONDITIONS OR A SPECIFIC SITE. IF SITE CONDITIONS CAUSE INSTALLATION TO DEVIATE FROM THE REQUIREMENTS DETAILED HEREIN, A LICENSED ENGINEER OR ARCHITECT SHALL PREPARE SITE SPECIFIC DOCUMENTS FOR USE WITH THIS DOCUMENT



FL #:
FL14429

DATE: 10.16.17

DWG. BY: SM
CHK. BY: HFN

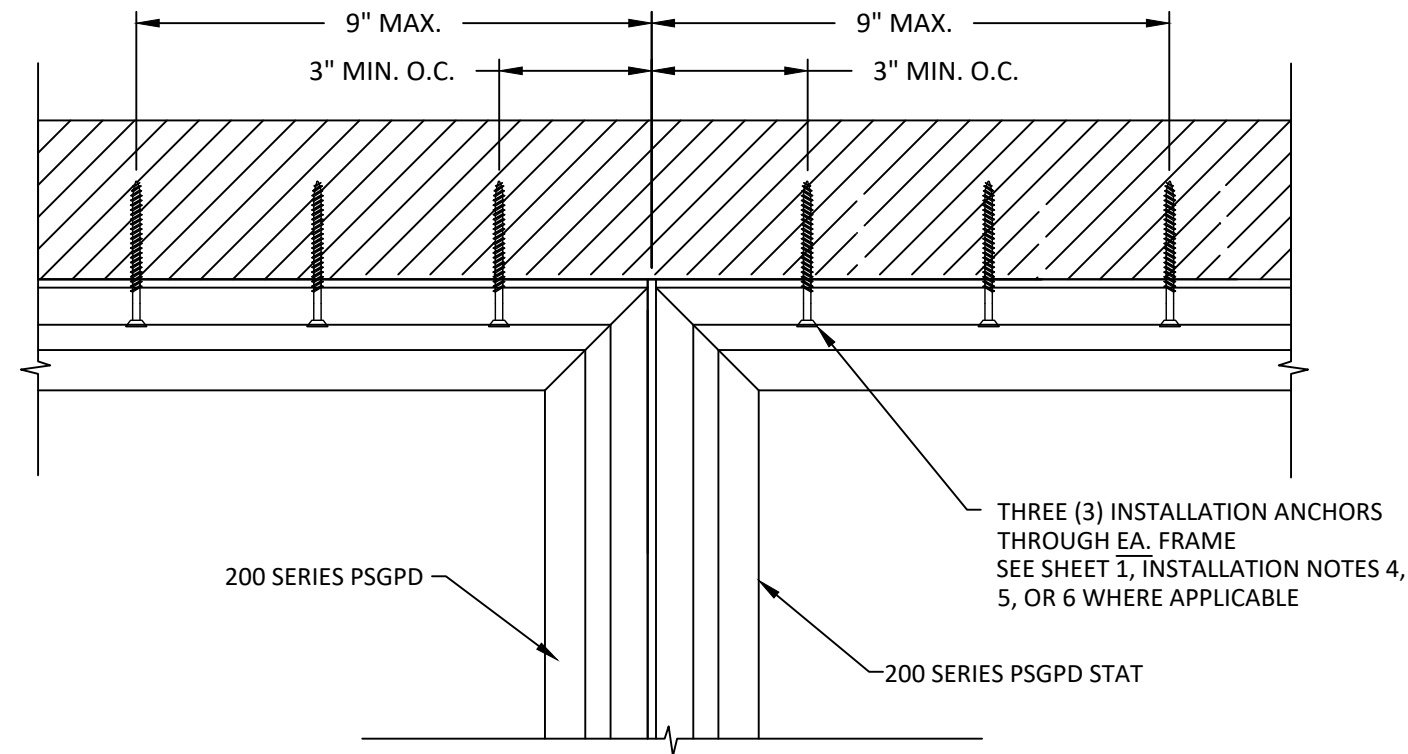
SCALE: NTS

DWG. #: AWD191

SHEET:

6

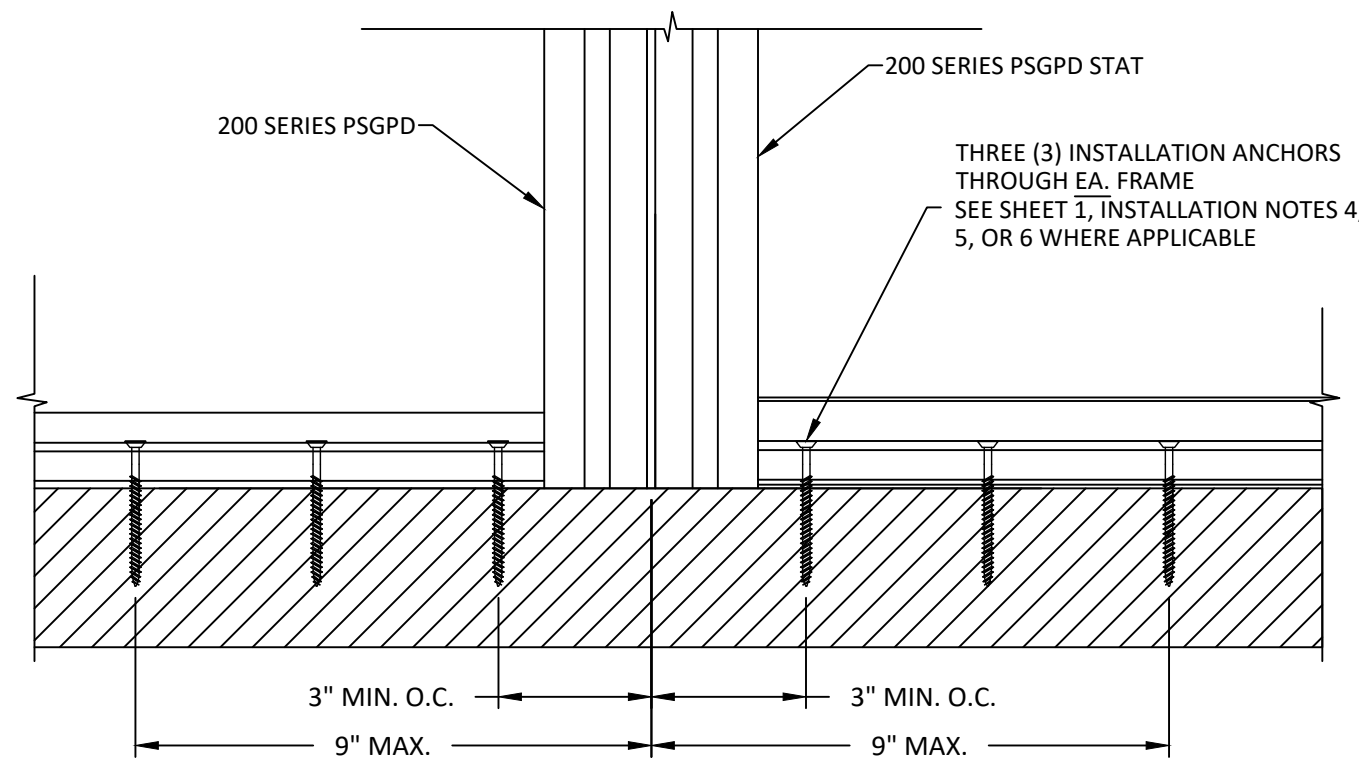
s:\projects\andersen\windows\cc-20-0224 - code change - fbc 2020 (version 7) code change\revisions\14429\3\awd191_200 series permashield gpd 2017-10-17.dwg
9/29/2020 4:02 PM



A
7

EXTERIOR VIEW

MULLION ANCHOR DETAIL - HEAD
THROUGH FRAME - TYP.



B
7

EXTERIOR VIEW

MULLION ANCHOR DETAIL - SILL
THROUGH FRAME - TYP.



100 FOURTH AVE NORTH
BAYPORT, MN 55003-1096
PH: (651) 264-5150 FX: (651) 264-5485

TITLE: 200 SERIES PERMA-SHIELD
GLIDING PATIO DOOR
(NON-HVHZ)/(NON-IMPACT)
MULLION ANCHOR DETAILS

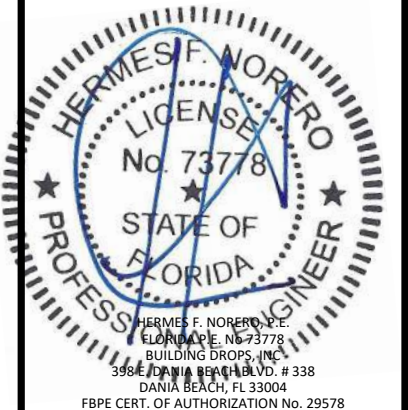
PREPARED BY:
BUILDING DROPS, INC.

398 E. DANIA BEACH BLVD., STE. 338
DANIA BEACH, FL 33004
PH: (954) 399-8478
FAX: (954) 744-4738
WEB: www.buildingdrops.com



REMARKS	BY	DATE
7TH FBC CODE CHANGE	SR	3.18.20

THE INSTALLATION DETAILS DESCRIBED HEREIN
ARE GENERIC AND MAY NOT REFLECT ACTUAL CONDITIONS
OR A SPECIFIC SITE. IF SITE CONDITIONS CAUSE INSTALLATION
TO DEVIATE
FROM THE REQUIREMENTS DETAILED HEREIN, A LICENSED
ENGINEER OR ARCHITECT SHALL
PREPARE SITE SPECIFIC DOCUMENTS FOR USE
WITH THIS DOCUMENT



FL #:
FL14429

DATE: **10.16.17**

DWG. BY: **SM** CHK. BY: **HFN**

SCALE: **NTS**

DWG. #: **AWD191**

SHEET:

7

OF 7