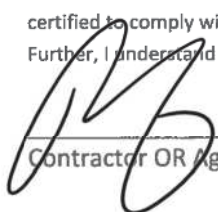


As required by Florida Statute 553.842 and Florida Administrative Code 9B-72, please provide the information and approval numbers on the building components listed below if they will be utilized on the construction project for which you are applying for a building permit. We recommend you contact your local product supplier should you not know the product approval number for any of the applicable listed products. Statewide approved products are listed online @ www.floridabuilding.org

Category/Subcategory	Manufacturer	Product Description	Approval Number(s)
1. EXTERIOR DOORS			
A. SWINGING			
B. SLIDING			
C. SECTIONAL/ROLL UP			
D. OTHER			
2. WINDOWS			
A. SINGLE/DOUBLE HUNG	Pella	Single Hung Window	16812.1 16812.2 16812.5
B. HORIZONTAL SLIDER			
C. CASEMENT			
D. FIXED			
E. MULLION			
F. SKYLIGHTS			
G. OTHER			
3. PANEL WALL			
A. SIDING			
B. SOFFITS			
C. STOREFRONTS			
D. GLASS BLOCK			
E. OTHER			
4. ROOFING PRODUCTS			
A. ASPHALT SHINGLES			
B. NON-STRUCTURAL METAL			
C. ROOFING TILES			
D. SINGLE PLY ROOF			
E. OTHER			
5. STRUCTURAL COMPONENTS			
A. WOOD CONNECTORS			
B. WOOD ANCHORS			
C. TRUSS PLATES			
D. INSULATION FORMS			
E. LINTELS			
F. OTHERS			
6. NEW EXTERIOR			
ENVELOPE PRODUCTS			

The products listed below did not demonstrate product approval at plan review. I understand that at the time of inspection of these products, the following information must be available to the inspector on the jobsite; 1) copy of the product approval, 2) performance characteristics which the product was tested and certified to comply with, 3) copy of the applicable manufacturers installation requirements.

Further, I understand these products may have to be removed if approval cannot be demonstrated during inspection.



Contractor OR Agent Signature

12/13/2024

Date

NOTES: _____



Product Approval
USER: Public User

[Product Approval Menu](#) > [Product or Application Search](#) > **Application List**

► OFFICE OF THE
SECRETARY

Search Criteria

[Refine Search](#)

Code Version	2023	FL#	16812.1
Application Type	ALL	Product Manufacturer	ALL
Category	ALL	Subcategory	ALL
Application Status	ALL	Compliance Method	ALL
Quality Assurance Entity	ALL	Quality Assurance Entity Contract Expired	ALL
Product Model, Number or Name	ALL	Product Description	ALL
Approved for use in HVHZ	ALL	Approved for use outside HVHZ	ALL
Impact Resistant	ALL	Design Pressure	ALL
Other	ALL		

Search Results - Applications

FL#	Type	Manufacturer	Validated By	Status
FL16812-R9 History	Revision	Pella Corporation FL#: FL16812.1 Model: 250 Series Single Hung Window Description: 36" x 63" vinyl non-impact single window Category: Windows Subcategory: Single Hung	T.E. Lunn, PE, LLC (561) 625-6455	Approved *

*Approved by DBPR. Approvals by DBPR shall be reviewed and ratified by the POC and/or the Commission if necessary.

[Contact Us](#) :: 2601 Blair Stone Road, Tallahassee FL 32399 Phone: 850-487-1824

The State of Florida is an AA/EEO employer. [Copyright 2007-2013 State of Florida](#). :: [Privacy Statement](#) :: [Accessibility Statement](#) :: [Refund Statement](#)

Under Florida law, email addresses are public records. If you do not want your e-mail address released in response to a public-records request, do not send electronic mail to this entity. Instead, contact the office by phone or by traditional mail. If you have any questions, please contact 850.487.1395. *Pursuant to Section 455.275(1), Florida Statutes, effective October 1, 2012, licensees licensed under Chapter 455, F.S. must provide the Department with an email address if they have one. The emails provided may be used for official communication with the licensee. However email addresses are public record. If you do not wish to supply a personal address, please provide the Department with an email address which can be made available to the public. To determine if you are a licensee under Chapter 455, F.S., please click [here](#).

Product Approval Accepts:



GENERAL NOTES:

1. ALL FASTENERS SHALL BE IN ACCORDANCE WITH THESE DRAWINGS. SPECIFIED ANCHOR EMBED TO BASE MATERIALS SHALL BE BEYOND WALL FINISH OR STUCCO.
2. OPENINGS, BLOCKING & BLOCKING FASTENERS MUST BE PROPERLY DESIGNED & INSTALLED TO TRANSFER LOADS TO THE FOUNDATION.
3. ALL FASTENERS SHALL BE INSTALLED IN ACCORDANCE WITH THE REQUIREMENTS OF THE FLORIDA BUILDING CODE (FBC).
4. ALL ANCHORS SECURING PRODUCT FRAMES TO PRESSURE TREATED BLOCKS OR WOOD FRAMING SHALL BE CAPABLE OF RESISTING CORROSION CAUSED BY THE PRESSURE TREATING CHEMICALS IN THE WOOD.
5. MATERIALS, INCLUDING BUT NOT LIMITED TO STEEL SCREWS, THAT COME INTO CONTACT WITH OTHER DISSIMILAR MATERIALS SHALL MEET THE REQUIREMENTS OF FLORIDA BUILDING CODE CHAPTER 20.
6. TO THE BEST OF OUR KNOWLEDGE, THE PRODUCT SHOWN HEREIN IS CERTIFIED & QUALITY ASSURED BY A FLORIDA STATE APPROVED CERTIFICATION/QA ENTITY & SHALL BE LABELED IN ACCORDANCE WITH THE FBC AND THE FLORIDA DEPARTMENT OF BUSINESS & PROFESSIONAL REGULATION SPECIFICATIONS.
7. MANUFACTURER'S QUALITY ASSURANCE SPECIFICATIONS & TESTING REPORTS SHALL BE IN ACCORDANCE WITH THE FOLLOWING APPLICABLE: (1) PRODUCT IS INSTALLED WITHIN A BUILDING PERMITTED FROM THE APPLICABLE LOCAL BUILDING DEPARTMENT. (2) PRODUCT IS INSTALLED BY ANOTHER THAN A LICENSED CONTRACTOR. (3) PRODUCT IS NOT BEING USED IN A MANNER OTHER THAN THAT FOR WHICH IT WAS DESIGNED OR PREVIOUSLY USED. (4) PRODUCT IS NOT BEING USED IN A MANNER THAT COULD CAUSE IT TO BE INCORRECT OR INCONSISTENT WITH WHAT HAS BEEN TESTED.
8. THE LEAST DESIGN PRESSURE SPECIFIED EITHER IN THIS DRAWING OR IN THE PRODUCT'S CERTIFICATION SHALL CONTROL FOR THE INSTALLED PRODUCT.
9. THESE DRAWINGS CERTIFY THE PRODUCT INSTALLATION ONLY. WATER PROOFING OF THE INSTALLED PRODUCT IS NOT PART OF THIS INSTALLATION CERTIFICATION. THAT RESPONSIBILITY SHALL BE THAT OF THE MANUFACTURER &/OR INSTALLER.

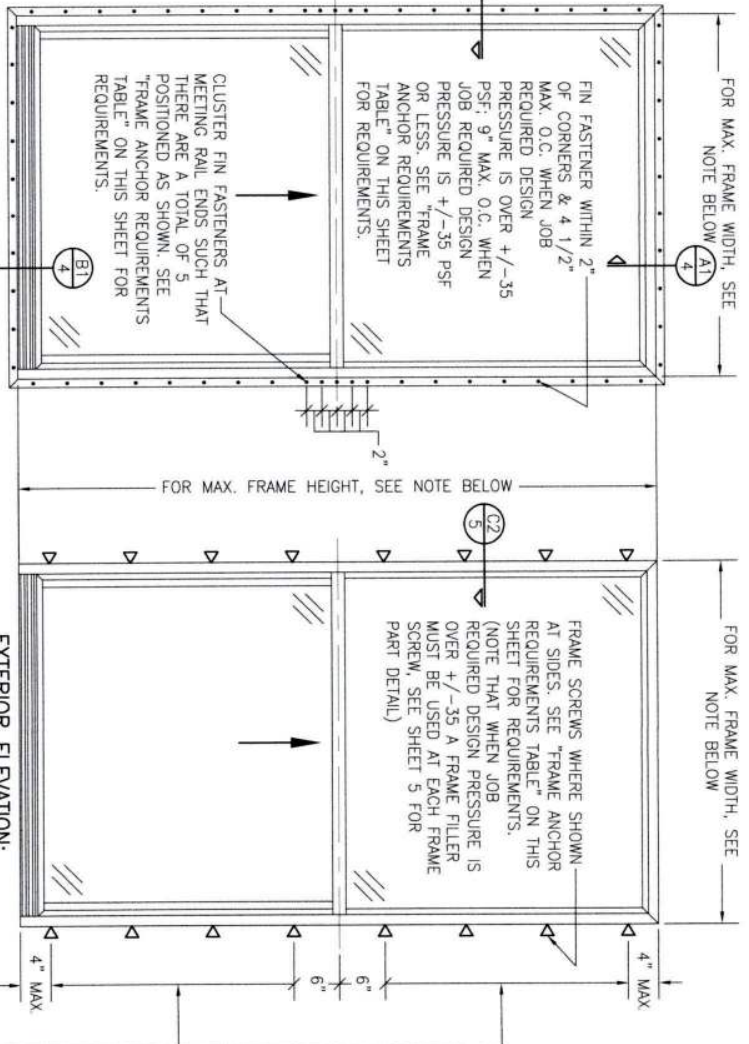
INSTALLATION EVALUATION IS BASED ON APPLICABLE ANCHOR STANDARDS AND/OR INFORMATION & RESULTS FROM FIELD TESTING REPORTS. THE FLORIDA BUILDING CODE VERSION CONSIDERED WITH THE EVALUATION WAS THAT IN FORCE AT THE TIME OF THE EVALUATION. IN THE EVENT OF CODE VERSION CHANGES/UPDATES OR IN THE EVENT THAT NEW OR ADDITIONAL TESTING IS COMPLETED ON THE REFERENCED PRODUCT, PRIOR TO STATING CODE COMPLIANCE WITH THE STATE, THE MANUFACTURER SHALL CONFIRM WITH THE INSTALLATION EVALUATION ENGINEER OF RECORD THAT THE INSTALLATIONS SPECIFIED HEREIN ARE CORRECT WITH THE THEN CURRENT TESTING CODE AND APPLICABLE STANDARDS.

INSTALLATION NOTE:
WHEN NECESSARY, INSTALLATION METHODS MAY BE MODIFIED WITH ANY ONE WINDOW SUCH THAT INDIVIDUAL SIDES OF THE WINDOW MAY USE ONE OR THE OTHER ANCHOR METHOD (EXAMPLE: HEAD MAY USE FRAME SCREWS METHOD WHILE OTHER SIDES USE FIN).

FRAME ANCHOR REQUIREMENTS TABLE

OPENING TYPE (SUBSTRATE)	FRAME/CLIP/NAIL FIN TO OPENING FASTENER TYPE	MINIMUM EMBED	MINIMUM EDGE DIST.
(1) FRAME SCREWS			
MIN. 2X4 WOOD FRAME OR BUCK (MIN. GR. 3 & G=0.55)	NO. 10 SMS OR WOOD SCREW	1 1/4"	3/4"
MIN. 18 GA. 33 KSI METAL STUD	NO. 10 GR. 5 SELF TAP/DRILL SCREW	FULL	1/2"
MIN. 1/8" THK A36 STEEL	NO. 10 GR. 5 SELF TAP/DRILL SCREW	FULL	1/2"
MIN. 1/8" THK 6063-T5 ALUM.	NO. 10 GR. 5 SELF TAP/DRILL SCREW	FULL	1/2"
MIN. C-90 CMU OR 2500 PSI CONCRETE	(2) 1/4" CONCRETE SCREW	1 1/4"	2"
(1) INSTALLATION CLIP SCREWS			
MIN. 2X4 WOOD FRAME OR BUCK (MIN. GR. 3 & G=0.55)	NO. 10 SMS SCREW	1 1/4"	1/2"
MIN. 18 GA. 33 KSI METAL STUD	NO. 10 GR. 5 SELF TAP/DRILL SCREW	FULL	1/2"
MIN. 1/8" THK A36 STEEL	NO. 10 GR. 5 SELF TAP/DRILL SCREW	FULL	1/2"
MIN. 1/8" THK 6063-T5 ALUM.	NO. 10 GR. 5 SELF TAP/DRILL SCREW	FULL	1/2"
2500 PSI CONCRETE	(2) 3/16" CONCRETE SCREW	1 1/4"	2"
(3) NAILING FIN FASTENERS			
MIN. 2X4 WOOD FRAME OR BUCK (MIN. GR. 3 & G=0.55)	NO. 8 SMS SCREW	1 3/8"	1/2"
MIN. 2X4 WOOD FRAME OR BUCK (MIN. GR. 3 & G=0.55)	11 GA. ROOFING NAIL	1 3/8"	1/2"
MIN. 1/8" THK A36 STEEL	NO. 8 GR. 5 SELF TAP/DRILL SCREW	FULL	1/2"
MIN. 1/8" THK 6063-T5 ALUM.	NO. 8 GR. 5 SELF TAP/DRILL SCREW	FULL	1/2"

- (1) FRAME AND INSTALLATION CLIP SCREWS SHALL BE A PAN OR HEX HEAD SCREW.
- (2) CONCRETE SCREWS SHALL BE ELCO ULTRACONS (C.S.), ELCO CRETE-FLEX (S.S.), ITW RAMST/RED HEAD TAPCONS (C.S. OR S.S.) OR HILTI KWIK-CON II (C.S. OR S.S.).
- (3) WHEN SCREWS ARE USED WITH THE NAIL FIN, THEY MUST BE A PAN HEAD OR WAFLE HEAD SCREW OR HAVE A FLAT WASHER AT THE SCREW HEAD.



EXTERIOR ELEVATION: SINGLE WINDOW

SCALE: 3/4" = 1'-0"

(NAIL FIN MOUNT CONDITION)

NOTE: FOR MAX. SINGLE WINDOW FRAME DIMENSIONS AND ALLOWABLE DESIGN PRESSURE, SEE APPLICABLE FLORIDA APPROVAL

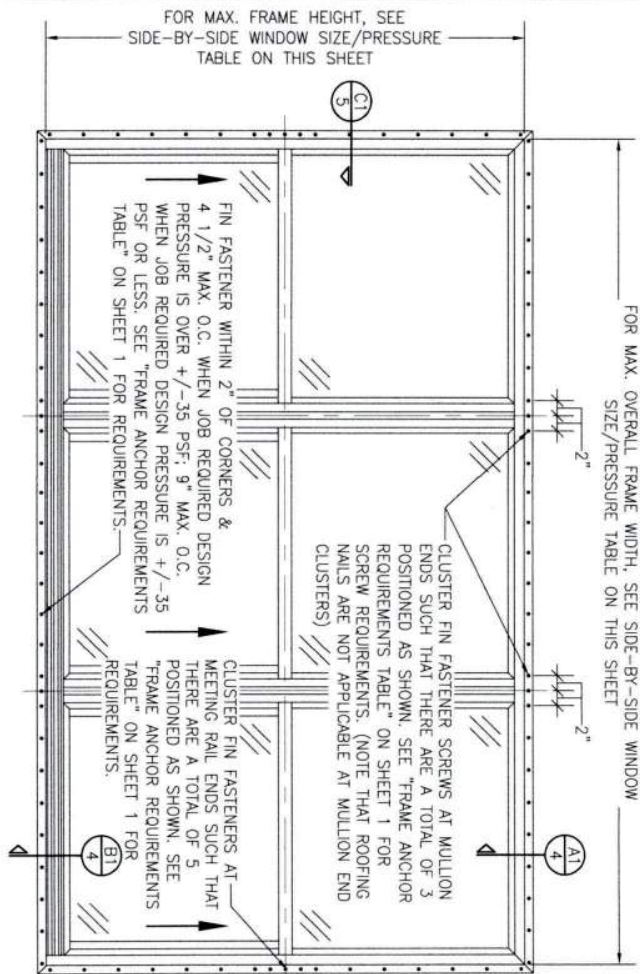
SIDE JAMB ANCHOR SPACING TABLE	
MAXIMUM FRAME WIDTH (IN.)	MAXIMUM O.C. SPACING (IN.)
54	12
48	13
36	17

ANCHOR/SUBSTRATE EVALUATION NOTE:

ALL ANCHORS IN THESE SPECIFIED SUBSTRATES HAVE BEEN ANALYZED IN ACCORDANCE WITH THEIR APPLICABLE STANDARDS(S) AND ARE FOUND TO BE CAPABLE OF SUPPORTING ALL LOADS IMPOSED ON THEM UNDER THE GUIDELINES OF THIS DOCUMENT. ANY SUBSTRATES OR CONDITIONS OUTSIDE OF WHAT IS SHOWN HEREIN SHALL BE SUBJECT TO JOB SPECIFIC ENGINEER'S REVIEW & CERTIFICATION.

THESE DRAWINGS ARE APPLICABLE ONLY TO THE PRODUCT AND/OR INSTALLATION OF ANY OTHER PRODUCT NOR MAY OF ANY PRODUCT NOT PRODUCED BY THE MANUFACTURER STATED ON THESE DRAWINGS.

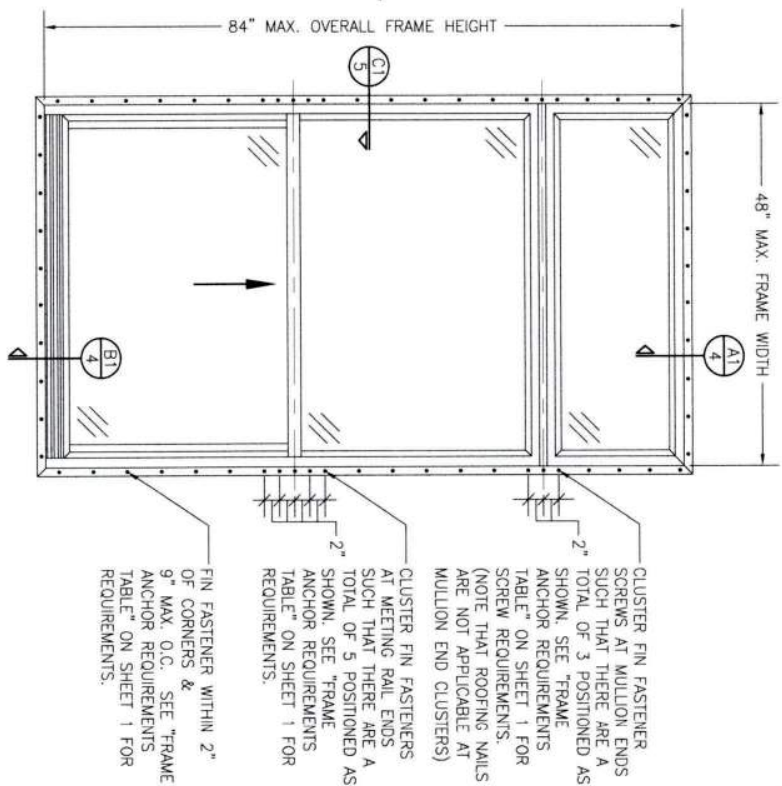
DRAWING NO. 1867		SHEET NO. 1 OF 5	
C		REV.	
WARREN W. SCHAEFER, P.E.		P.E. NO. 44135	
DRAWING TITLE: 250 SERIES VINYL SINGLE HUNG NON-IMPACT WINDOW			
CONSULTANTS: W. W. SCHAEFER ENGINEERING & CONSULTING, P.A.		MANUFACTURER: Pella	
26376 NADIR ROAD, UNIT 309 PUNTA GORDA, FL 33983 PHONE: 561-744-3424		PELLA CORPORATION 102 MAIN STREET PELLA, IA 50219 641-621-1000	
CERTIFICATION		REVISION	
A1		UPDATE FOR NEW TESTING	
B1		ADDED 109 X 72 WINDOW	
C1		UPDATE TO CURRENT STANDARDS	
DATE: 02/07/14		DATE: 03/09/23	



**EXTERIOR ELEVATION:
SIDE-BY-SIDE WINDOW**
SCALE: 3/4" = 1'-0"
(NAIL FIN MOUNT CONDITION)

ALLOWABLE SIDE-BY-SIDE WINDOW SIZE/PRESSURE TABLE			
MAXIMUM OVERALL FRAME WIDTH DIMENSION (IN.)	MAXIMUM FRAME HEIGHT DIMENSION (IN.)	ALLOWABLE PRESSURE (+/- PSF)	
TRIPLE WINDOW			
109	63	35	
109	72	30	
DOUBLE WINDOW			
96	72	35	
72	65 1/2	50	

PRESSURES & CONDITIONS SHOWN IN THIS DRAWING ARE GOVERNED BY INSTALLATION REQUIREMENTS ONLY. THE GOVERNING CONDITIONS ON ANY SPECIFIC PRODUCT SHALL BE THE LESSER OF THOSE SPECIFIED IN THE PRODUCTS STATE APPROVAL OR THAT SHOWN IN THESE DRAWINGS.



**EXTERIOR ELEVATION:
SINGLE WINDOW WITH TRANSOM**
SCALE: 3/4" = 1'-0"
(NAIL FIN MOUNT CONDITION)

ALLOWABLE DESIGN PRESSURE (TRANSOM UNITS ONLY)
+/-35 PSF

NO.	REVISION	DESCRIPTION	BY	DATE

PELLA CORPORATION
102 MAIN STREET
PELLA, IA 50219
641-621-1000

MANUFACTURER

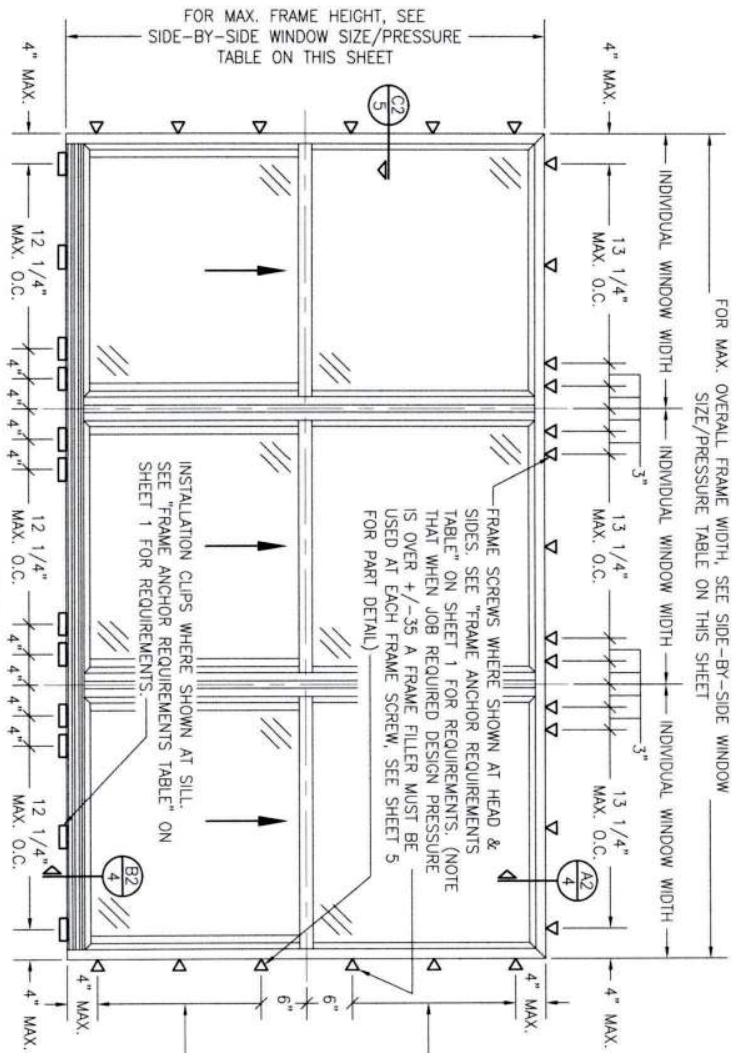


DRAWING TITLE
250 SERIES VINYL SINGLE HUNG NON-IMPACT WINDOW

CONSULTANTS
W. W. SCHAEFER ENGINEERING & CONSULTING, P.A.
26378 NADIR ROAD; UNIT 309
PUNTA GORDA, FL 33983
PHONE: 561-744-3424

CERTIFICATION
WARREN W. SCHAEFER, P.E.
P.E. NO. 44135

DRAWING NO. 1867
REV. C
SHEET NO. 2 OF 5



**EXTERIOR ELEVATION:
SIDE-BY-SIDE WINDOW**

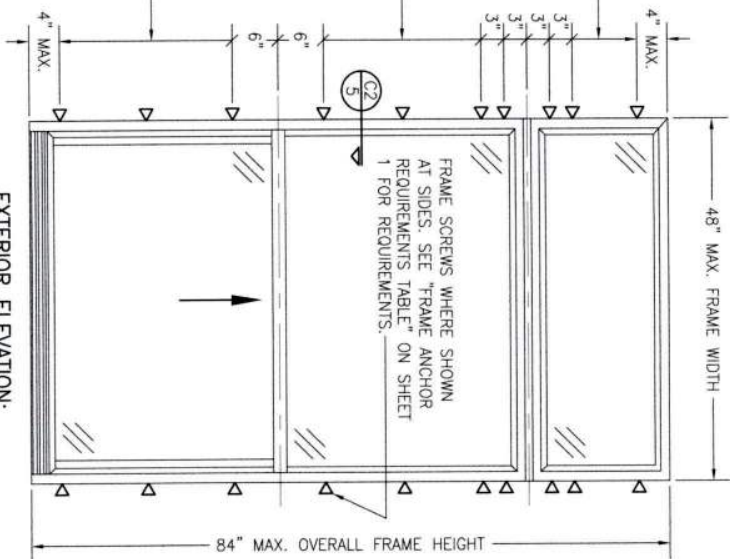
SCALE: 3/4" = 1'-0"

(FRAME SCREW AND CLIP MOUNT CONDITION)

ALLOWABLE SIDE-BY-SIDE WINDOW SIZE/PRESSURE TABLE		
MAXIMUM OVERALL FRAME WIDTH DIMENSION (IN.)	MAXIMUM FRAME HEIGHT DIMENSION (IN.)	ALLOWABLE PRESSURE (+/- PSF)
TRIPLE WINDOW		
109	63	35
109	72	30
DOUBLE WINDOW		
96	72	35
72	65 1/2	50

SIDE JAMB ANCHOR SPACING TABLE		
MAXIMUM INDIVIDUAL WINDOW WIDTH (IN.)	MAXIMUM O.C. SPACING (IN.)	
48	13	
36	17	

PRESSURES & CONDITIONS SHOWN IN THIS DRAWING ARE GOVERNED BY INSTALLATION REQUIREMENTS ONLY. THE GOVERNING CONDITIONS ON ANY SPECIFIC PRODUCT SHALL BE THE LESSER OF THOSE SPECIFIED IN THE PRODUCTS STATE APPROVAL OR THAT SHOWN IN THESE DRAWINGS.



**EXTERIOR ELEVATION:
SINGLE WINDOW WITH TRANSOM**

SCALE: 3/4" = 1'-0"

(FRAME SCREW MOUNT CONDITION)

ALLOWABLE DESIGN PRESSURE (TRANSOM UNITS ONLY)
+/-35 PSF

					DRAWN BY: W.B.M.	PLOT: 1-16
					CHECKED BY: W.B.M.	
NO.	REVISION	DESCRIPTION	BY	DATE	DATE: 02/05/14	

DRAWING TITLE
250 SERIES VINYL SINGLE HUNG NON-IMPACT WINDOW

CONSULTANTS
W. W. SCHAEFER ENGINEERING & CONSULTING, P.A.
26376 NADIR ROAD, UNIT 509
PUNTA GORDA, FL 33983
PHONE: 561-744-3424

MANUFACTURER

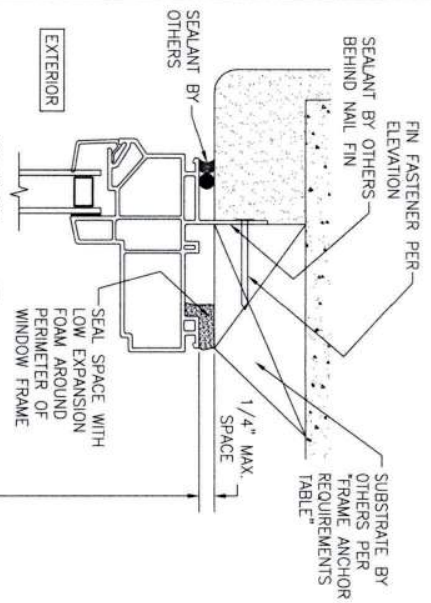


PELLA CORPORATION
102 MAIN STREET
PELLA, IA 50219
641-621-1000

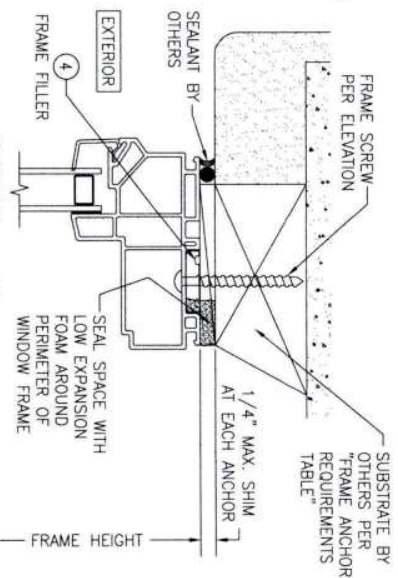
CERTIFICATION

WARREN W. SCHAEFER, P.E.
P.E. NO. 44135

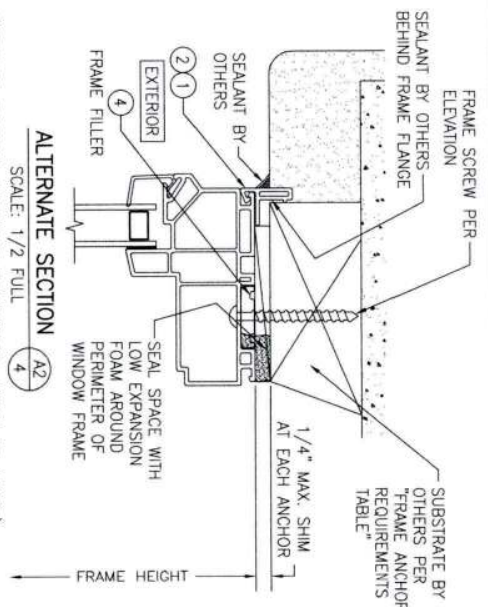
DRAWING NO. 1867
SHEET NO. 3 OF 5



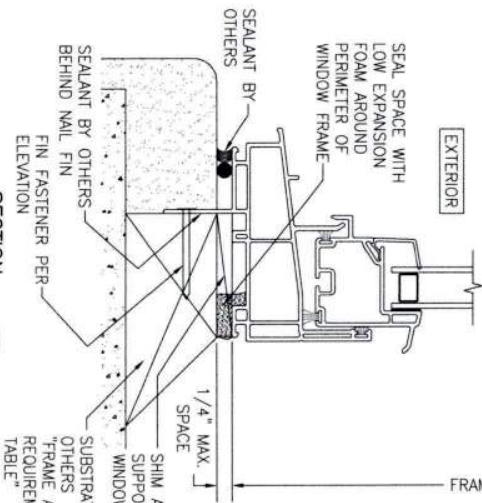
SECTION A1
SCALE: 3/4 FULL
(NAIL FIN MOUNT)



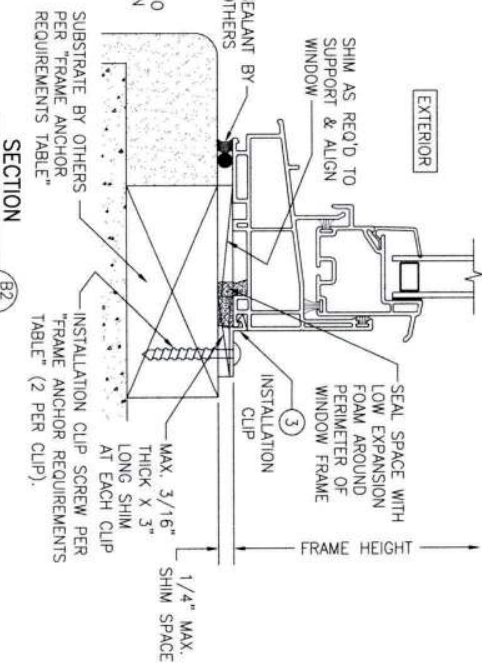
SECTION A2
SCALE: 3/4 FULL
(FRAME SCREW MOUNT CONDITION)




ALTERNATE SECTION A2
SCALE: 1/2 FULL
(FRAME SCREW MOUNT CONDITION WITH FLANGE)

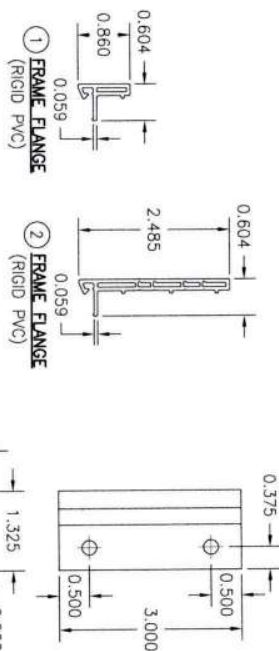
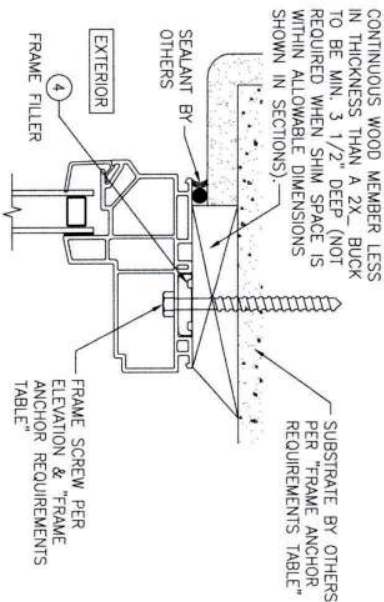
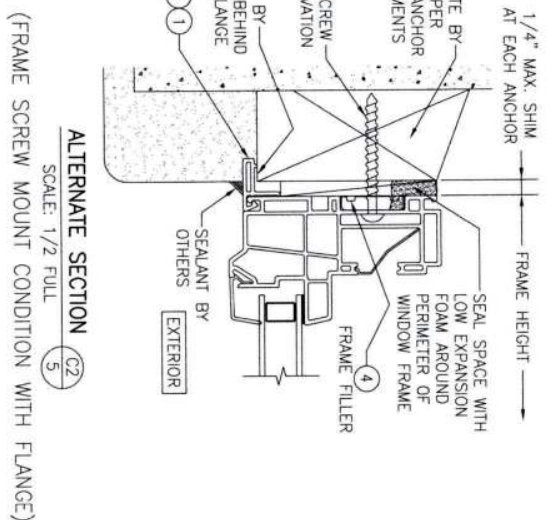
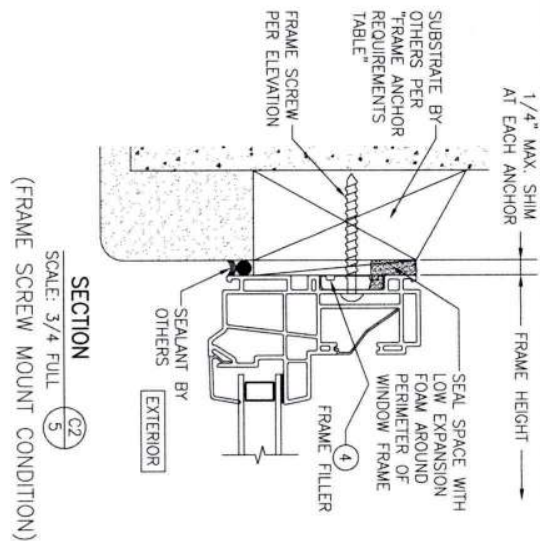
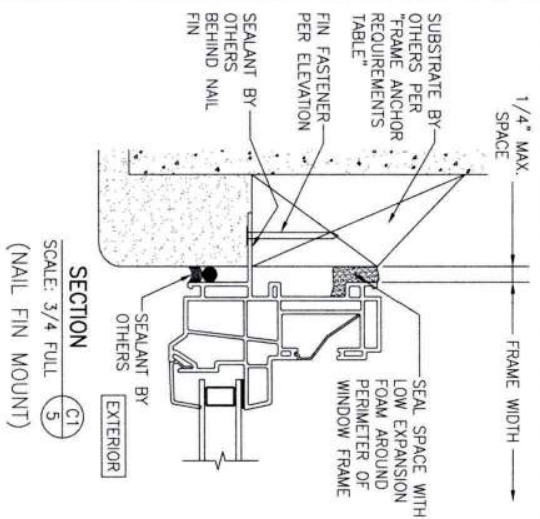


SECTION B1
SCALE: 3/4 FULL
(NAIL FIN MOUNT)



SECTION B2
SCALE: 3/4 FULL
(INSTALLATION CLIP MOUNT CONDITION)

DRAWING NO. 1867		REV. C	SHEET NO. 4 OF 5	CERTIFICATION WARREN W. SCHAEFER, P.E.	DRAWING TITLE 250 SERIES VINYL SINGLE HUNG NON-IMPACT WINDOW		NO.	REVISION	DESCRIPTION	BY	DATE	DRAWN BY: [Signature] DATE: 02/26/14 CHECKED BY: [Signature] DATE: [Blank]
CONSULTANTS W. W. SCHAEFER ENGINEERING & CONSULTING, P.A. 26376 NADIR ROAD; UNIT 309 PUNTA GORDA, FL 33983 PHONE: 561-744-3424					MANUFACTURER  PELLA CORPORATION 102 MAIN STREET PELLA, IA 50219 641-621-1000							



LENGTH = 3.000"
(4) FRAME FILLER (RIGID PVC)
(NOTE THAT WHEN JOB REQUIRED DESIGN PRESSURE IS OVER +/- 35 A FRAME FILLER MUST BE USED AT EACH FRAME SCREW)

OPTIONAL DIRECT MOUNT DETAIL TO SUBSTRATE WITH SPACER
(HEAD SECTION SHOWN; SIDES ARE INSTALLED THE SAME)
(DIRECT MOUNT CONDITION IS NOT APPLICABLE AT SILL)
(FOR DETAIL NOT SHOWN, SEE OTHER SECTIONS)

DRAWING NO. 1867	SHEET NO. 5	WARREN W. SCHAEFER, P.E. P.E. NO. 44135	DRAWING TITLE 250 SERIES VINYL SINGLE HUNG NON-IMPACT WINDOW	CONSULTANTS W. W. SCHAEFER ENGINEERING & CONSULTING, P.A. 26376 NADIR ROAD, UNIT 309 PUNTA GORDA, FL 33983 PHONE: 561-744-3424	MANUFACTURER Pella PELLA CORPORATION 102 MAIN STREET PELLA, IA 50219 641-621-1000	NO. REVISION DESCRIPTION BY DATE				DESIGNED BY DATE CHECKED BY DATE	



Product Approval
USER: Public User

[Product Approval Menu](#) > [Product or Application Search](#) > **Application List**

► OFFICE OF THE
SECRETARY

Search Criteria

[Refine Search](#)

Code Version	2023	FL#	16812.2
Application Type	ALL	Product Manufacturer	ALL
Category	ALL	Subcategory	ALL
Application Status	ALL	Compliance Method	ALL
Quality Assurance Entity	ALL	Quality Assurance Entity Contract Expired	ALL
Product Model, Number or Name	ALL	Product Description	ALL
Approved for use in HVHZ	ALL	Approved for use outside HVHZ	ALL
Impact Resistant	ALL	Design Pressure	ALL
Other	ALL		

Search Results - Applications

FL#	Type	Manufacturer	Validated By	Status
FL16812-R9 History	Revision	Pella Corporation FL#: FL16812.2 Model: 250 Series Single Hung Window Description: 48" x 84" vinyl non-impact single window with fully reinforced stiles & rails Category: Windows Subcategory: Single Hung	T.E. Lunn, PE, LLC (561) 625-6455	Approved *

*Approved by DBPR. Approvals by DBPR shall be reviewed and ratified by the POC and/or the Commission if necessary.

[Contact Us](#) :: 2601 Blair Stone Road, Tallahassee FL 32399 Phone: 850-487-1824

The State of Florida is an AA/EEO employer. [Copyright 2007-2013 State of Florida](#). :: [Privacy Statement](#) :: [Accessibility Statement](#) :: [Refund Statement](#)

Under Florida law, email addresses are public records. If you do not want your e-mail address released in response to a public-records request, do not send electronic mail to this entity. Instead, contact the office by phone or by traditional mail. If you have any questions, please contact 850.487.1395. *Pursuant to Section 455.275(1), Florida Statutes, effective October 1, 2012, licensees licensed under Chapter 455, F.S. must provide the Department with an email address if they have one. The emails provided may be used for official communication with the licensee. However email addresses are public record. If you do not wish to supply a personal address, please provide the Department with an email address which can be made available to the public. To determine if you are a licensee under Chapter 455, F.S., please click [here](#).

Product Approval Accepts:



GENERAL NOTES:

1. ALL FASTENERS SHALL BE IN ACCORDANCE WITH THESE DRAWINGS. SPECIFIED ANCHOR EMBED TO BASE MATERIALS SHALL BE BEYOND WALL FINISH OR STUCCO.
2. OPENINGS, BLOCKING & BLOCKING FASTENERS MUST BE PROPERLY DESIGNED & INSTALLED TO TRANSFER LOADS TO THE FOUNDATION.
3. ALL FASTENERS SHALL BE INSTALLED IN ACCORDANCE WITH THE REQUIREMENTS OF THE FLORIDA BUILDING CODE (FBC).
4. ALL ANCHORS SECURING PRODUCT FRAMES TO PRESSURE TREATED BLOCKS OR WOOD FRAMING SHALL BE CAPABLE OF RESISTING CORROSION CAUSED BY THE PRESSURE TREATING CHEMICALS IN THE WOOD.
5. MATERIALS, INCLUDING BUT NOT LIMITED TO STEEL SCREWS, THAT COME INTO CONTACT WITH OTHER DISSIMILAR MATERIALS SHALL MEET THE REQUIREMENTS OF FLORIDA BUILDING CODE CHAPTER 20.
6. TO THE BEST OF OUR KNOWLEDGE, THE PRODUCT SHOWN HEREIN IS CERTIFIED & QUALITY ASSURED BY A FLORIDA STATE APPROVED CERTIFICATION/QA ENTITY & SHALL BE LABELED IN ACCORDANCE WITH THE FBC AND THE FLORIDA DEPARTMENT OF BUSINESS & PROFESSIONAL REGULATION SPECIFICATIONS.
7. MANUFACTURER'S QUALITY ASSURANCE SPECIFICATIONS & TESTING REPORTS SHALL BE IN ACCORDANCE WITH THE FOLLOWING APPLICABLE: (1) PRODUCT IS INSTALLED WITHOUT BUILDING DEVIATION FROM THE APPLICABLE LOCAL BUILDING DEPARTMENT (2) PRODUCT IS INSTALLED BY ANOTHER THAN LICENSED CONTRACTOR (3) PRODUCT IS NOT INSTALLED IN A MANNER THAT CAUSE THESE INSTALLATIONS TO BE INCORRECT OR INCONSISTENT WITH WHAT HAS BEEN TESTED.
8. THE LEAST DESIGN PRESSURE SPECIFIED EITHER IN THIS DRAWING OR IN THE PRODUCT'S CERTIFICATION SHALL CONTROL FOR THE INSTALLED PRODUCT.
9. THESE DRAWINGS CERTIFY THE PRODUCT INSTALLATION ONLY. WATER PROOFING OF THE INSTALLED PRODUCT IS NOT PART OF THIS INSTALLATION CERTIFICATION. THAT RESPONSIBILITY SHALL BE THAT OF THE MANUFACTURER &/OR INSTALLER.

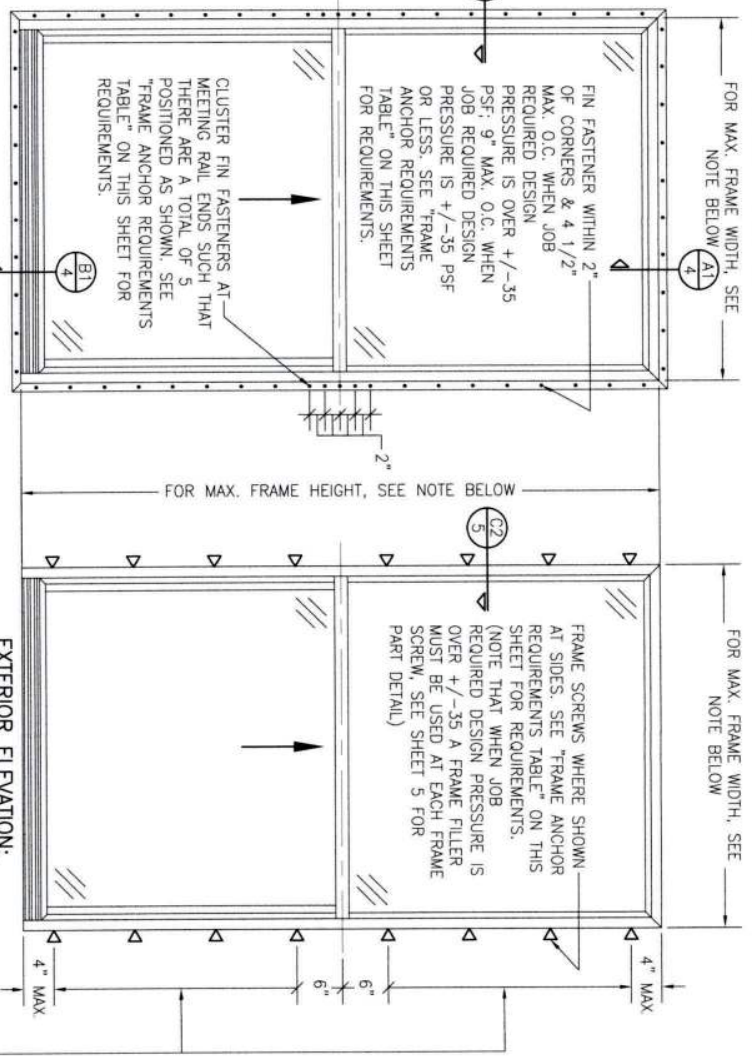
INSTALLATION EVALUATION IS BASED ON APPLICABLE ANCHOR STANDARDS AND/OR INFORMATION & RESULTS FROM FIELD TESTING. THE EVALUATION REPORTS THE FLORIDA BUILDING CODE VERSION CONSIDERED WITH THE EVALUATION WAS THAT IN FORCE AT THE TIME OF THE EVALUATION. IN THE EVENT OF CODE VERSION CHANGES/UPDATES OR IN THE EVENT THAT NEW OR ADDITIONAL TESTING IS COMPLETED ON THE REFERENCED PRODUCT, PRIOR TO STATING CODE COMPLIANCE WITH THE STATE, THE MANUFACTURER SHALL CONFIRM WITH THE INSTALLATION EVALUATION ENGINEER OF RECORD THAT THE INSTALLATIONS SPECIFIED HEREIN ARE CORRECT WITH THE THEN CURRENT TESTING CODE AND APPLICABLE STANDARDS.

INSTALLATION NOTE:
WHEN NECESSARY, INSTALLATION METHODS MAY BE VARIED WITH ANY ONE WINDOW SUCH THAT INDIVIDUAL SIDES OF THE WINDOW MAY USE ONE OR THE OTHER ANCHOR METHOD (EXAMPLE: HEAD MAY USE FRAME SCREWS METHOD WHILE OTHER SIDES USE FIN).

FRAME ANCHOR REQUIREMENTS TABLE

OPENING TYPE (SUBSTRATE)	FRAME/CLIP/NAIL FIN TO OPENING FASTENER TYPE	MINIMUM EMBED	MINIMUM EDGE DIST.
(1) FRAME SCREWS			
MIN. 2X4 WOOD FRAME OR BUCK (MIN. GR. 3 & G=0.55)	NO. 10 SMS OR WOOD SCREW	1 1/4"	3/4"
MIN. 18 GA. 33 KSI METAL STUD	NO. 10 GR. 5 SELF TAP/DRILL SCREW	FULL	1/2"
MIN. 1/8" THK A36 STEEL	NO. 10 GR. 5 SELF TAP/DRILL SCREW	FULL	1/2"
MIN. 1/8" THK 6063-T5 ALUM.	NO. 10 GR. 5 SELF TAP/DRILL SCREW	FULL	1/2"
MIN. C-90 CMU OR 2500 PSI CONCRETE	(2) 1/4" CONCRETE SCREW	1 1/4"	2"
(1) INSTALLATION CLIP SCREWS			
MIN. 2X4 WOOD FRAME OR BUCK (MIN. GR. 3 & G=0.55)	NO. 10 SMS SCREW	1 1/4"	1/2"
MIN. 18 GA. 33 KSI METAL STUD	NO. 10 GR. 5 SELF TAP/DRILL SCREW	FULL	1/2"
MIN. 1/8" THK A36 STEEL	NO. 10 GR. 5 SELF TAP/DRILL SCREW	FULL	1/2"
MIN. 1/8" THK 6063-T5 ALUM.	NO. 10 GR. 5 SELF TAP/DRILL SCREW	FULL	1/2"
2500 PSI CONCRETE	(2) 3/16" CONCRETE SCREW	1 1/4"	2"
(3) NAILING FIN FASTENERS			
MIN. 2X4 WOOD FRAME OR BUCK (MIN. GR. 3 & G=0.55)	NO. 8 SMS SCREW	1 3/8"	1/2"
MIN. 2X4 WOOD FRAME OR BUCK (MIN. GR. 3 & G=0.55)	11 GA. ROOFING NAIL	1 3/8"	1/2"
MIN. 1/8" THK A36 STEEL	NO. 8 GR. 5 SELF TAP/DRILL SCREW	FULL	1/2"
MIN. 1/8" THK 6063-T5 ALUM.	NO. 8 GR. 5 SELF TAP/DRILL SCREW	FULL	1/2"

- (1) FRAME AND INSTALLATION CLIP SCREWS SHALL BE A PAN OR HEX HEAD SCREW.
- (2) CONCRETE SCREWS SHALL BE ELCO ULTRACONS (C.S.), ELCO CRETE-FLEX (S.S.), ITW RAMSEY/RED HEAD TAPCONS (C.S. OR S.S.) OR HILTI KWIK-CON II (C.S. OR S.S.).
- (3) WHEN SCREWS ARE USED WITH THE NAIL FIN, THEY MUST BE A PAN HEAD OR WAFLE HEAD SCREW OR HAVE A FLAT WASHER AT THE SCREW HEAD.



NOTE: FOR MAX. SINGLE WINDOW FRAME DIMENSIONS AND ALLOWABLE DESIGN PRESSURE, SEE APPLICABLE FLORIDA APPROVAL

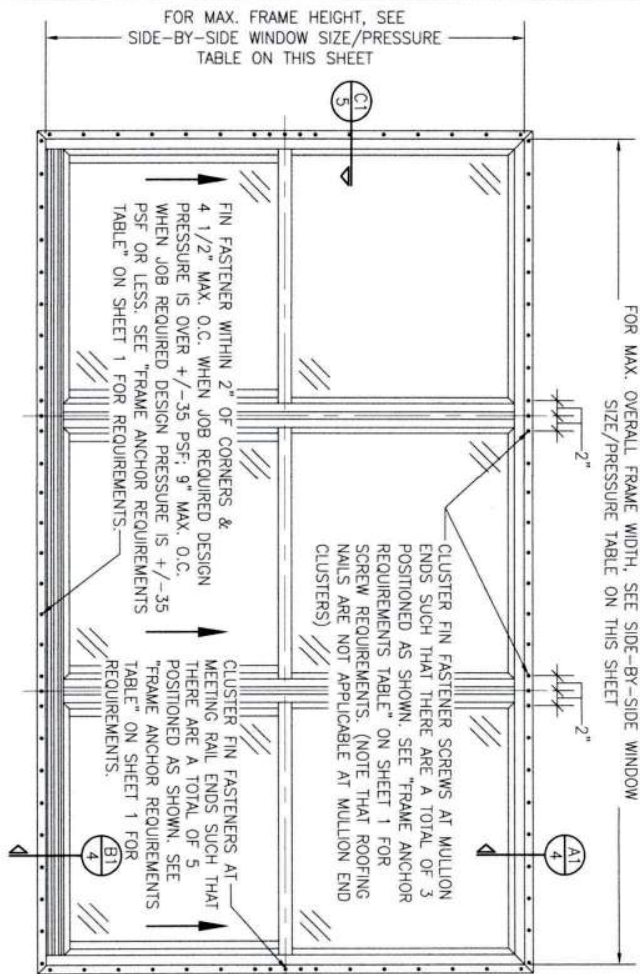
ANCHOR/SUBSTRATE EVALUATION NOTE:
ANCHORS AND OTHER SPECIFIED SUBSTRATES HAVE BEEN ANALYZED IN ACCORDANCE WITH THEIR APPLICABLE STANDARDS(S) AND ARE FOUND TO BE CAPABLE OF SUPPORTING ALL LOADS IMPOSED ON THEM UNDER THE GUIDELINES OF THIS DOCUMENT. ANY SUBSTRATES OR CONDITIONS OUTSIDE OF WHAT IS SHOWN HEREIN SHALL BE SUBJECT TO JOB SPECIFIC ENGINEER'S REVIEW & CERTIFICATION.



Digitally signed by Warren W Schaefer
Date: 2023.03.09 09:33:17 -05'00'

THESE DRAWINGS ARE APPLICABLE ONLY TO THE PRODUCT AND/OR INSTALLATION OF ANY OTHER PRODUCT NOR MAY THEY BE USED FOR RATIONAL AND/OR LOCAL APPROVAL OF ANY PRODUCT NOT PRODUCED BY THE MANUFACTURER STATED ON THESE DRAWINGS.

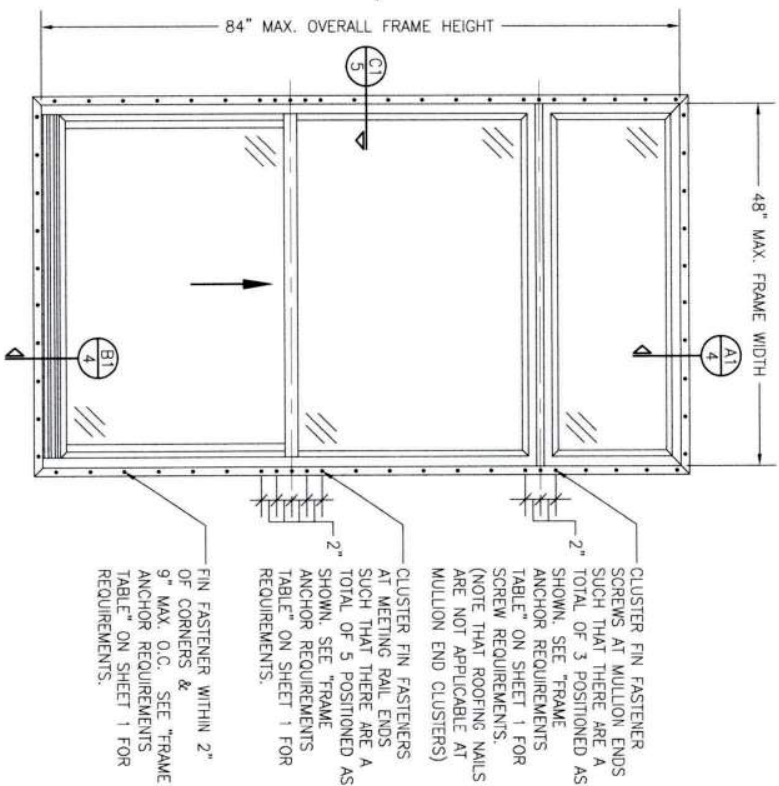
DRAWING NO. 1867		SHEET NO. 5																	
C		C																	
DRAWING TITLE: 250 SERIES VINYL SINGLE HUNG NON-IMPACT WINDOW																			
CONSULTANTS: W. W. SCHAEFER ENGINEERING & CONSULTING, P.A.		MANUFACTURER: Pella																	
26376 NADIR ROAD, UNIT 309 PUNTA GORDA, FL 33983 PHONE: 561-744-3424		PELLA CORPORATION 102 MAIN STREET PELLA, IA 50219 641-621-1000																	
CERTIFICATION		REVISION																	
WARREN W. SCHAEFER, P.E. P.E. NO. 44135		<table border="1"> <thead> <tr> <th>NO.</th> <th>REVISION DESCRIPTION</th> <th>BY</th> <th>DATE</th> </tr> </thead> <tbody> <tr> <td>A1</td> <td>UPDATE FOR NEW TESTING</td> <td>W.W.S.</td> <td>03/08/16</td> </tr> <tr> <td>B1</td> <td>ADDED 109 X 72 WINDOW</td> <td>W.W.S.</td> <td>11/02/20</td> </tr> <tr> <td>C1</td> <td>UPDATE TO CURRENT STANDARDS</td> <td>W.W.S.</td> <td>03/09/23</td> </tr> </tbody> </table>		NO.	REVISION DESCRIPTION	BY	DATE	A1	UPDATE FOR NEW TESTING	W.W.S.	03/08/16	B1	ADDED 109 X 72 WINDOW	W.W.S.	11/02/20	C1	UPDATE TO CURRENT STANDARDS	W.W.S.	03/09/23
NO.	REVISION DESCRIPTION	BY	DATE																
A1	UPDATE FOR NEW TESTING	W.W.S.	03/08/16																
B1	ADDED 109 X 72 WINDOW	W.W.S.	11/02/20																
C1	UPDATE TO CURRENT STANDARDS	W.W.S.	03/09/23																



**EXTERIOR ELEVATION:
SIDE-BY-SIDE WINDOW**
SCALE: 3/4" = 1'-0"
(NAIL FIN MOUNT CONDITION)

ALLOWABLE SIDE-BY-SIDE WINDOW SIZE/PRESSURE TABLE			
MAXIMUM OVERALL FRAME WIDTH DIMENSION (IN.)	MAXIMUM FRAME HEIGHT DIMENSION (IN.)	ALLOWABLE PRESSURE (+/- PSF)	
TRIPLE WINDOW			
109	63	35	
109	72	30	
DOUBLE WINDOW			
96	72	35	
72	65 1/2	50	

PRESSURES & CONDITIONS SHOWN IN THIS DRAWING ARE GOVERNED BY INSTALLATION REQUIREMENTS ONLY. THE GOVERNING CONDITIONS ON ANY SPECIFIC PRODUCT SHALL BE THE LESSER OF THOSE SPECIFIED IN THE PRODUCTS STATE APPROVAL OR THAT SHOWN IN THESE DRAWINGS.



**EXTERIOR ELEVATION:
SINGLE WINDOW WITH TRANSOM**
SCALE: 3/4" = 1'-0"
(NAIL FIN MOUNT CONDITION)

ALLOWABLE DESIGN PRESSURE (TRANSOM UNITS ONLY)
+/-35 PSF

NO.	REVISION	DESCRIPTION	BY	DATE

MANUFACTURER



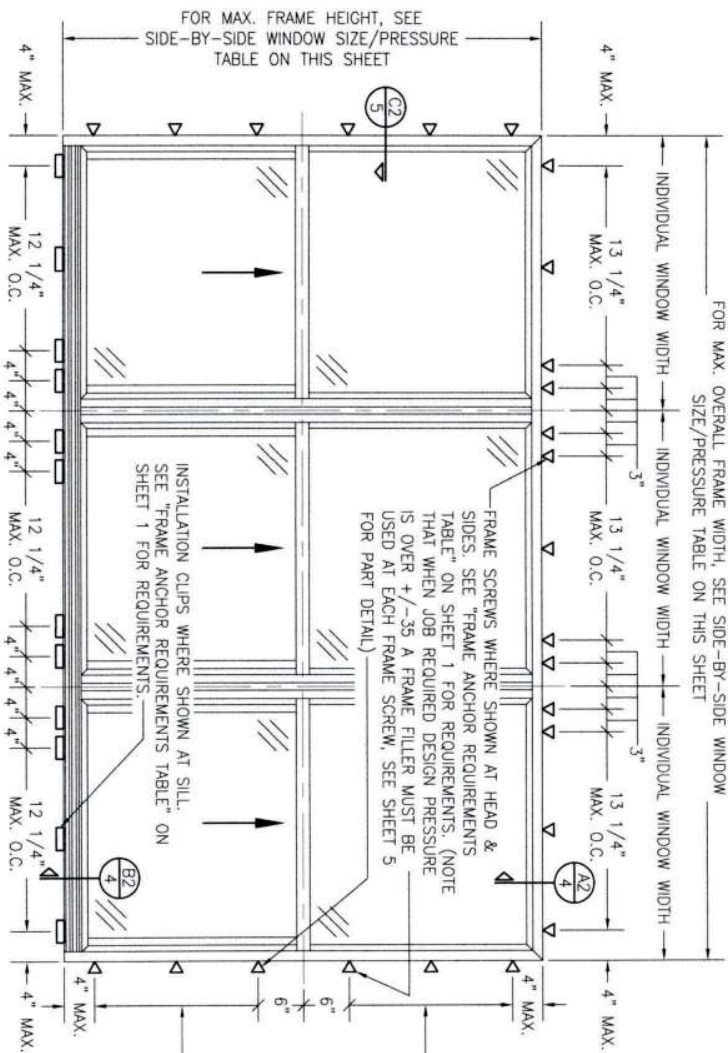
PELLA CORPORATION
102 MAIN STREET
PELLA, IA 50219
641-621-1000

DRAWING TITLE
250 SERIES VINYL SINGLE HUNG NON-IMPACT WINDOW

CONSULTANTS
W. W. SCHAEFER ENGINEERING & CONSULTING, P.A.
26376 NADIR ROAD; UNIT 309
PUNTA GORDA, FL 33983
PHONE: 561-744-3424

WARREN W. SCHAEFER, P.E.
P.E. NO. 44135

DRAWING NO.	REV.
1867	C
SHEET NO.	2 OF 5



**EXTERIOR ELEVATION:
SIDE-BY-SIDE WINDOW**

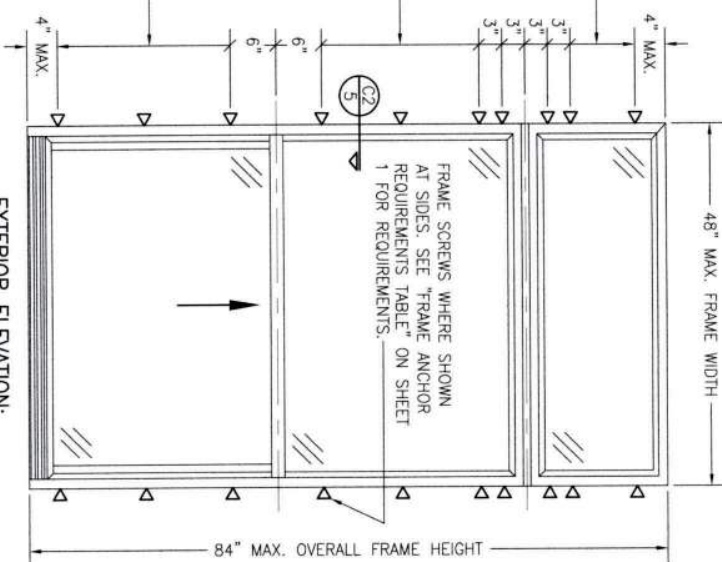
SCALE: 3/4" = 1'-0"

(FRAME SCREW AND CLIP MOUNT CONDITION)

ALLOWABLE SIDE-BY-SIDE WINDOW SIZE/PRESSURE TABLE		
MAXIMUM OVERALL FRAME WIDTH DIMENSION (IN.)	MAXIMUM FRAME HEIGHT DIMENSION (IN.)	ALLOWABLE PRESSURE (+/- PSF)
TRIPLE WINDOW		
109	63	35
109	72	30
DOUBLE WINDOW		
96	72	35
72	65 1/2	50

SIDE JAMB ANCHOR SPACING TABLE		
MAXIMUM INDIVIDUAL WINDOW WIDTH (IN.)	MAXIMUM O.C. SPACING (IN.)	
48	13	
36	17	

PRESSURES & CONDITIONS SHOWN IN THIS DRAWING ARE GOVERNED BY INSTALLATION REQUIREMENTS ONLY. THE GOVERNING CONDITIONS ON ANY SPECIFIC PRODUCT SHALL BE THE LESSER OF THOSE SPECIFIED IN THE PRODUCTS STATE APPROVAL OR THAT SHOWN IN THESE DRAWINGS.




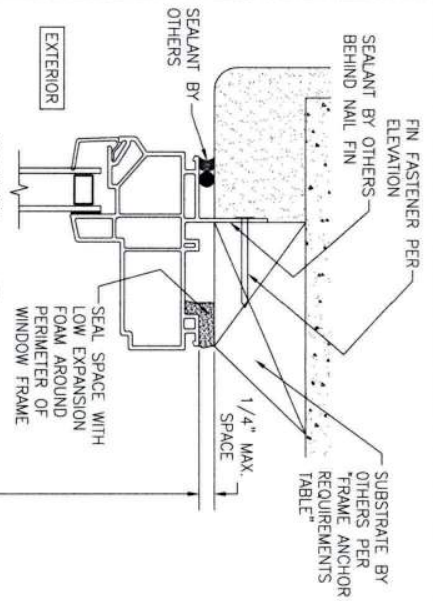
**EXTERIOR ELEVATION:
SINGLE WINDOW WITH TRANSOM**

SCALE: 3/4" = 1'-0"

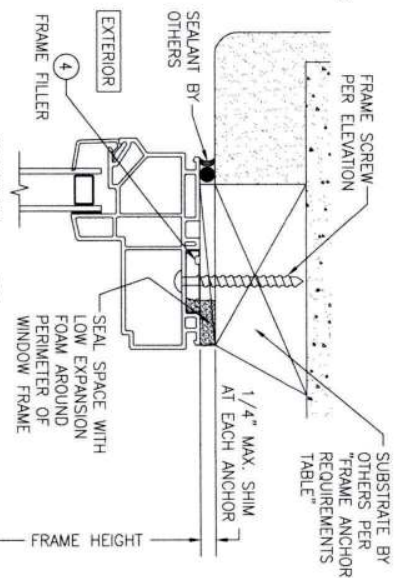
(FRAME SCREW MOUNT CONDITION)

ALLOWABLE DESIGN PRESSURE (TRANSOM UNITS ONLY)
+/-35 PSF

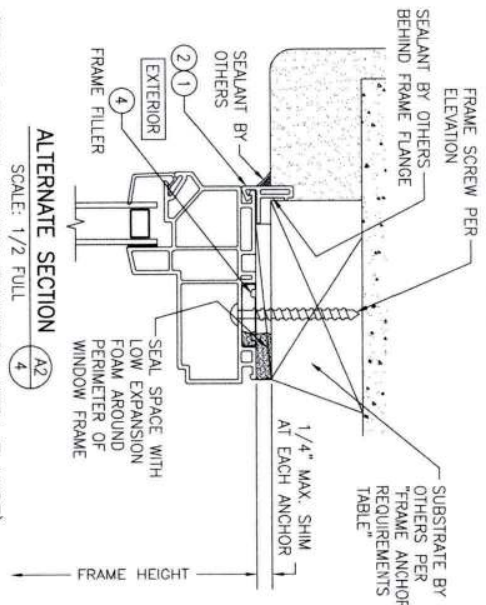
CERTIFICATION DRAWING NO. 1867 SHEET NO. 3 OF 5		DRAWING TITLE 250 SERIES VINYL SINGLE HUNG NON-IMPACT WINDOW		CONSULTANTS W. W. SCHAEFER ENGINEERING & CONSULTING, P.A. 26376 NADIR ROAD, UNIT 509 PUNTA GORDA, FL 33983 PHONE: 561-744-3424		MANUFACTURER  PELLA CORPORATION 102 MAIN STREET PELLA, IA 50219 641-621-1000		REVISION <table border="1"> <tr> <th>NO.</th> <th>REVISION DESCRIPTION</th> <th>BY</th> <th>DATE</th> </tr> <tr><td> </td><td> </td><td> </td><td> </td></tr> <tr><td> </td><td> </td><td> </td><td> </td></tr> <tr><td> </td><td> </td><td> </td><td> </td></tr> <tr><td> </td><td> </td><td> </td><td> </td></tr> </table>		NO.	REVISION DESCRIPTION	BY	DATE																	DRAWN BY: W.B.M. CHECKED BY: W.B.M. DATE: 02/09/14	
NO.	REVISION DESCRIPTION	BY	DATE																												



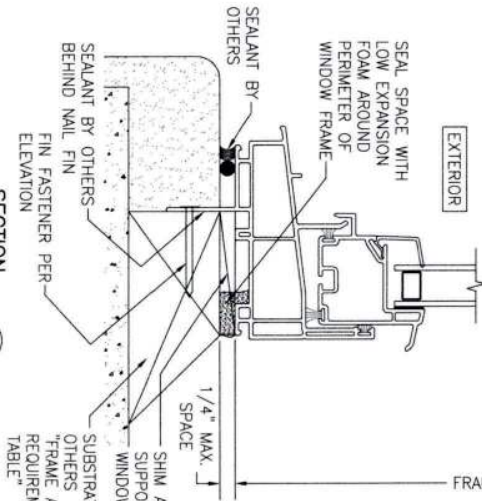
SECTION A1
SCALE: 3/4 FULL
(NAIL FIN MOUNT)



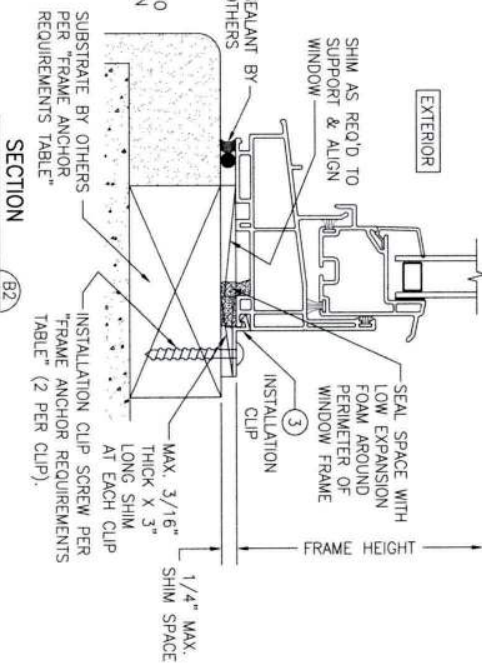
SECTION A2
SCALE: 3/4 FULL
(FRAME SCREW MOUNT CONDITION)




ALTERNATE SECTION A2
SCALE: 1/2 FULL
(FRAME SCREW MOUNT CONDITION WITH FLANGE)

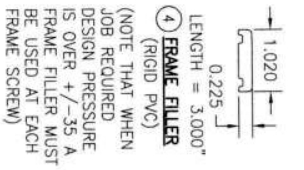
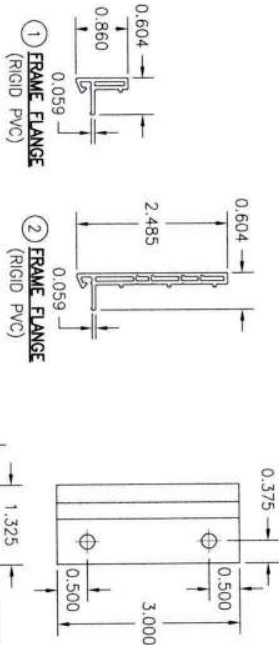
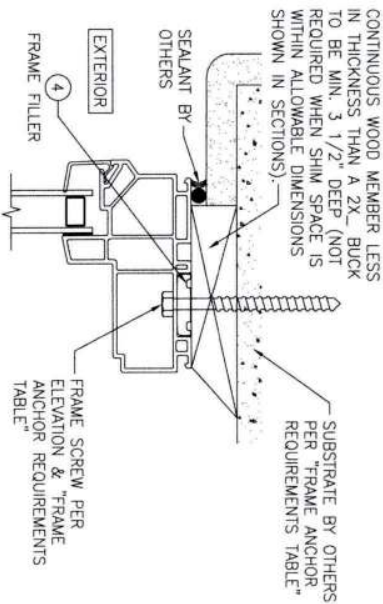
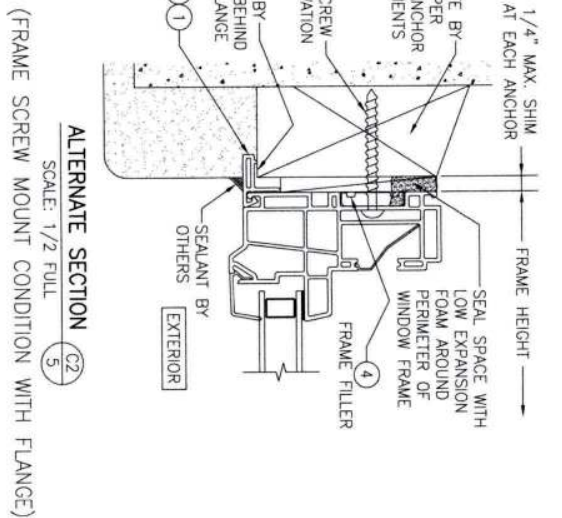
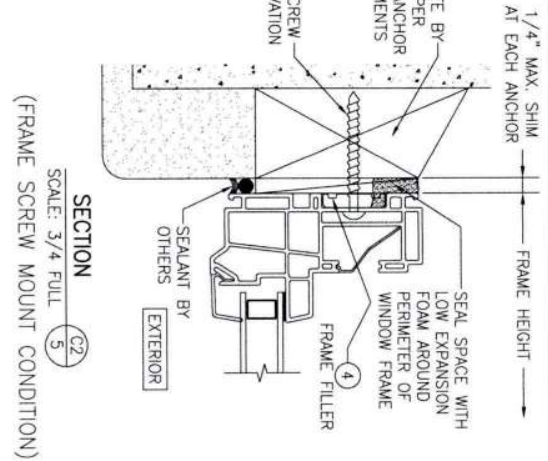
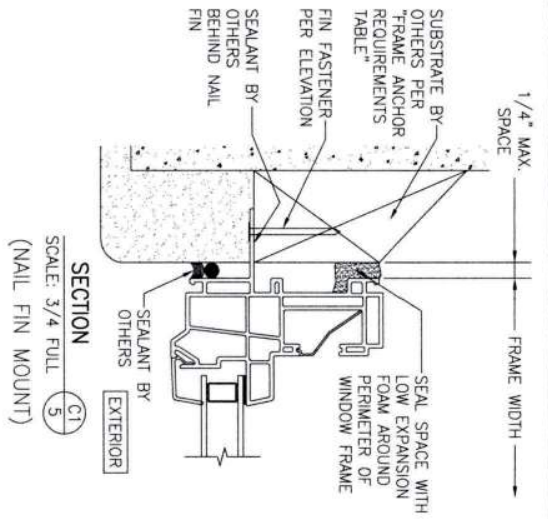


SECTION B1
SCALE: 3/4 FULL
(NAIL FIN MOUNT)



SECTION B2
SCALE: 3/4 FULL
(INSTALLATION CLIP MOUNT CONDITION)

DRAWING NO. 1867		C		REV.		WARREN W. SCHAEFER, P.E.		DRAWING TITLE 250 SERIES VINYL SINGLE HUNG NON-IMPACT WINDOW		NO.		REVISION		DESCRIPTION		BY		DATE		DRAWN BY: Z-W		CHECKED BY: Z-W		DATE: 07/25/14	
SHEET NO. 4 OF 5								CONSULTANTS W. W. SCHAEFER ENGINEERING & CONSULTING, P.A. 26376 NADIR ROAD, UNIT 309 PUNTA GORDA, FL 33983 PHONE: 561-744-3424		MANUFACTURER  PELLA CORPORATION 102 MAIN STREET PELLA, IA 50219 641-621-1000															



CONTINUOUS WOOD MEMBER LESS IN THICKNESS THAN A 2X BUCK TO BE MIN. 3 1/2" DEEP (NOT REQUIRED WHEN SHIM SPACE IS WITHIN ALLOWABLE DIMENSIONS SHOWN IN SECTIONS).

SEALANT BY OTHERS

SEAL SPACE WITH LOW EXPANSION FOAM AROUND PERIMETER OF WINDOW FRAME

FIN FASTENER PER ELEVATION

SEALANT BY OTHERS BEHIND NAIL FIN

SEALANT BY OTHERS

EXTERIOR

FRAME FILLER


FRAME SCREW PER ELEVATION & "FRAME ANCHOR REQUIREMENTS TABLE"

OPTIONAL DIRECT MOUNT DETAIL TO SUBSTRATE WITH SPACER

(HEAD SECTION SHOWN; SIDES ARE INSTALLED THE SAME)

(DIRECT MOUNT CONDITION IS NOT APPLICABLE AT SILL)

(FOR DETAIL NOT SHOWN, SEE OTHER SECTIONS)

DRAWING NO. 1867 SHEET NO. 5 OF 5	CERTIFICATION		DRAWING TITLE 250 SERIES VINYL SINGLE HUNG NON-IMPACT WINDOW		NO.		REVISION		DESCRIPTION		BY	DATE	PROJECT NO.	DRAWING SET	CHECKED BY
	CONSULTANTS		MANUFACTURER												
	W. W. SCHAEFER ENGINEERING & CONSULTING, P.A.														
	26376 NADIR ROAD, UNIT 309		PELLA CORPORATION												
	PUNTA GORDA, FL 33983		102 MAIN STREET												
	PHONE: 561-744-3424		PELLA, IA 50219												
			641-621-1000												
WARREN W. SCHAEFER, P.E.															
P.E. NO. 44135															


[DBPR HOME](#) | [ABOUT DBPR](#) | [DBPR DIVISIONS](#) | [CONTACT DBPR](#)
[BCIS Home](#) | [Log In](#) | [User Registration](#) | [Hot Topics](#) | [Submit Surcharge](#) | [Stats & Facts](#) | [Publications](#) | [Contact Us](#) | [BCIS Site Map](#) | [Links](#) | [Search](#)

Product Approval
 USER: Public User

[Product Approval Menu](#) > [Product or Application Search](#) > **Application List**

 OFFICE OF THE
 SECRETARY

Search Criteria
[Refine Search](#)

Code Version	2023	FL#	16812.5
Application Type	ALL	Product Manufacturer	ALL
Category	ALL	Subcategory	ALL
Application Status	ALL	Compliance Method	ALL
Quality Assurance Entity	ALL	Quality Assurance Entity Contract Expired	ALL
Product Model, Number or Name	ALL	Product Description	ALL
Approved for use in HVHZ	ALL	Approved for use outside HVHZ	ALL
Impact Resistant	ALL	Design Pressure	ALL
Other	ALL		

Search Results - Applications

FL#	Type	Manufacturer	Validated By	Status
FL16812-R9 History	Revision	Pella Corporation FL#: FL16812.5 Model: 250 Series Single Hung Window Description: 72 1/2" x 63" vinyl non-impact double window Category: Windows Subcategory: Single Hung	T.E. Lunn, PE, LLC (561) 625-6455	Approved *

*Approved by DBPR. Approvals by DBPR shall be reviewed and ratified by the POC and/or the Commission if necessary.

[Contact Us](#) :: 2601 Blair Stone Road, Tallahassee FL 32399 Phone: 850-487-1824

The State of Florida is an AA/EEO employer. [Copyright 2007-2013 State of Florida](#). :: [Privacy Statement](#) :: [Accessibility Statement](#) :: [Refund Statement](#)

Under Florida law, email addresses are public records. If you do not want your e-mail address released in response to a public-records request, do not send electronic mail to this entity. Instead, contact the office by phone or by traditional mail. If you have any questions, please contact 850.487.1395. *Pursuant to Section 455.275(1), Florida Statutes, effective October 1, 2012, licensees licensed under Chapter 455, F.S., must provide the Department with an email address if they have one. The emails provided may be used for official communication with the licensee. However email addresses are public record. If you do not wish to supply a personal address, please provide the Department with an email address which can be made available to the public. To determine if you are a licensee under Chapter 455, F.S., please click [here](#).

Product Approval Accepts:



[DBPR HOME](#) | [ABOUT DBPR](#) | [DBPR DIVISIONS](#) | [CONTACT DBPR](#)
[BCIS Home](#) | [Log In](#) | [User Registration](#) | [Hot Topics](#) | [Submit Surcharge](#) | [Stats & Facts](#) | [Publications](#) | [Contact Us](#) | [BCIS Site Map](#) | [Links](#) | [Search](#)


Product Approval

USER: Public User

[Product Approval Menu](#) > [Product or Application Search](#) > [Application List](#) > **Application Detail**

OFFICE OF THE
SECRETARY

FL #	FL16812-R9								
Application Type	Revision								
Code Version	2023								
Application Status	Approved								
	*Approved by DBPR. Approvals by DBPR shall be reviewed and ratified by the POC and/or the Commission if necessary.								
Comments									
Archived	<input type="checkbox"/>								
Product Manufacturer	Pella Corporation								
Address/Phone/Email	102 Main St. Pella, IA 50219 (641) 621-6096 pellaproductapproval@pella.com								
Authorized Signature	TROY FARR tbfarr@pella.com								
Technical Representative	TROY FARR								
Address/Phone/Email	18600 NE WILKES ROAD PORTLAND, OR 97230 (503) 405-9176 tbfarr@pella.com								
Quality Assurance Representative	Pat Bortscheller								
Address/Phone/Email	102 Main Street Pella, IA 50219 (641) 621-1000 PJBortscheller@pella.com								
Category	Windows								
Subcategory	Single Hung								
Compliance Method	Certification Mark or Listing								
Certification Agency	Window and Door Manufacturer Association								
Validated By	T.E. Lunn, PE, LLC								
	<input checked="" type="checkbox"/> Validation Checklist - Hardcopy Received								
Referenced Standard and Year (of Standard)	<table> <thead> <tr> <th><u>Standard</u></th><th><u>Year</u></th></tr> </thead> <tbody> <tr> <td>AAMA/WDMA/CSA 101/I.S.2/A440-08</td><td>2008</td></tr> <tr> <td>AAMA/WDMA/CSA 101/I.S.2/A440-11</td><td>2011</td></tr> <tr> <td>AAMA/WDMA/CSA 101/I.S.2/A440-17</td><td>2017</td></tr> </tbody> </table>	<u>Standard</u>	<u>Year</u>	AAMA/WDMA/CSA 101/I.S.2/A440-08	2008	AAMA/WDMA/CSA 101/I.S.2/A440-11	2011	AAMA/WDMA/CSA 101/I.S.2/A440-17	2017
<u>Standard</u>	<u>Year</u>								
AAMA/WDMA/CSA 101/I.S.2/A440-08	2008								
AAMA/WDMA/CSA 101/I.S.2/A440-11	2011								
AAMA/WDMA/CSA 101/I.S.2/A440-17	2017								
Equivalence of Product Standards									
Certified By									

GENERAL NOTES:

1. ALL FASTENERS SHALL BE IN ACCORDANCE WITH THESE DRAWINGS. SPECIFIED ANCHOR EMBED TO BASE MATERIALS SHALL BE BEYOND WALL FINISH OR STUCCO.
2. OPENINGS, BLOCKING & BLOCKING FASTENERS MUST BE PROPERLY DESIGNED & INSTALLED TO TRANSFER LOADS TO THE FOUNDATION.
3. ALL FASTENERS SHALL BE INSTALLED IN ACCORDANCE WITH THE REQUIREMENTS OF THE FLORIDA BUILDING CODE (FBC).
4. ALL ANCHORS SECURING PRODUCT FRAMES TO PRESSURE TREATED BLOCKS OR WOOD FRAMING SHALL BE CAPABLE OF RESISTING CORROSION CAUSED BY THE PRESSURE TREATING CHEMICALS IN THE WOOD.
5. MATERIALS, INCLUDING BUT NOT LIMITED TO STEEL SCREWS, THAT COME INTO CONTACT WITH OTHER DISSIMILAR MATERIALS SHALL MEET THE REQUIREMENTS OF FLORIDA BUILDING CODE CHAPTER 20.
6. TO THE BEST OF OUR KNOWLEDGE, THE PRODUCT SHOWN HEREIN IS CERTIFIED & QUALITY ASSURED BY A FLORIDA STATE APPROVED CERTIFICATION/QA ENTITY & SHALL BE LABELED IN ACCORDANCE WITH THE FBC AND THE FLORIDA DEPARTMENT OF BUSINESS & PROFESSIONAL REGULATION SPECIFICATIONS.
7. MANUFACTURER'S QUALITY ASSURANCE SPECIFICATIONS & TESTING REPORTS SHALL BE IN ACCORDANCE WITH THE FOLLOWING APPLICABLE: (1) PRODUCT IS INSTALLED WITHIN A BUILDING REFERRED FROM THE APPLICABLE LOCAL BUILDING DEPARTMENT. (2) PRODUCT IS INSTALLED BY ANOTHER THAN A LICENSED CONTRACTOR. (3) PRODUCT IS NOT INSTALLED IN ACCORDANCE WITH THE FBC. (4) IF CHANGES HAVE OCCURRED TO THE PRODUCT, THE MANUFACTURER SHALL BE NOTIFIED IN WRITING. (5) IF CHANGES HAVE OCCURRED TO THE PRODUCT, THE MANUFACTURER SHALL BE NOTIFIED IN WRITING. (6) IF CHANGES HAVE OCCURRED TO THE PRODUCT, THE MANUFACTURER SHALL BE NOTIFIED IN WRITING. (7) IF CHANGES HAVE OCCURRED TO THE PRODUCT, THE MANUFACTURER SHALL BE NOTIFIED IN WRITING. (8) THE LEAST DESIGN PRESSURE SPECIFIED EITHER IN THIS DRAWING OR IN THE PRODUCT'S CERTIFICATION SHALL CONTROL FOR THE INSTALLED PRODUCT.
8. THESE DRAWINGS CERTIFY THE PRODUCT INSTALLATION ONLY. WATER PROOFING OF THE INSTALLED PRODUCT IS NOT PART OF THIS INSTALLATION CERTIFICATION. THAT RESPONSIBILITY SHALL BE THAT OF THE MANUFACTURER &/OR INSTALLER.

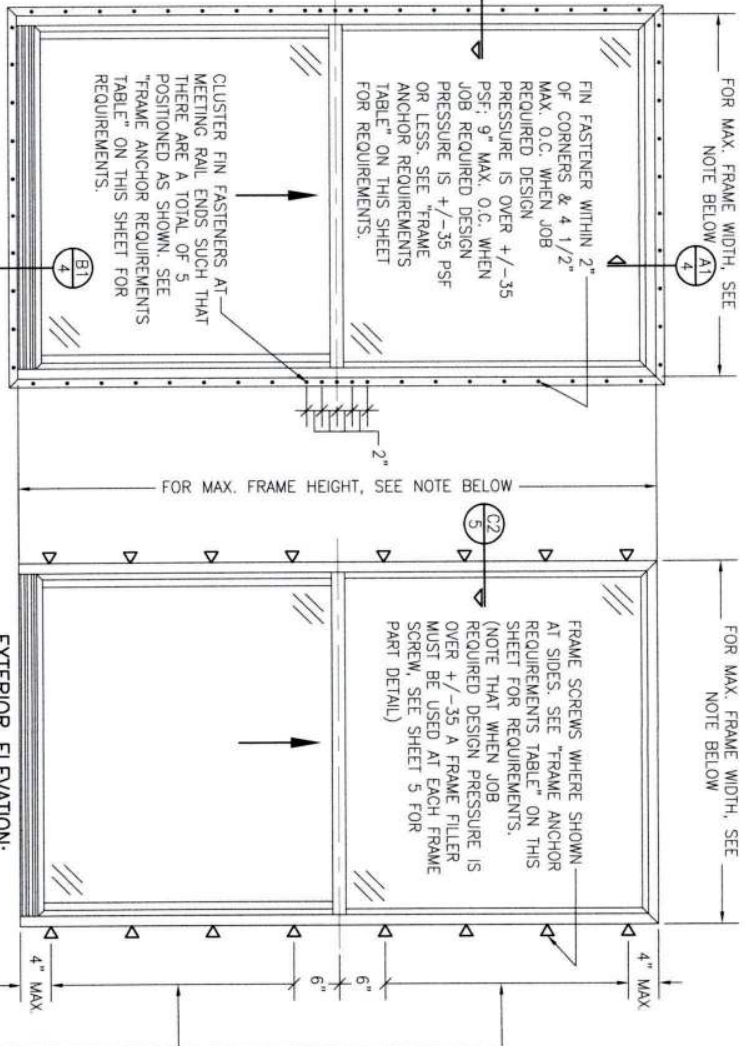
INSTALLATION EVALUATION IS BASED ON APPLICABLE ANCHOR STANDARDS AND/OR INFORMATION & RESULTS FROM FIELD TESTING REPORTS. THE FLORIDA BUILDING CODE VERSION CONSIDERED WITH THE EVALUATION WAS THAT IN FORCE AT THE TIME OF THE EVALUATION. IN THE EVENT OF CODE VERSION CHANGES/UPDATES OR IN THE EVENT THAT NEW OR ADDITIONAL TESTING IS COMPLETED ON THE REFERENCED PRODUCT, PRIOR TO STATING CODE COMPLIANCE WITH THE STATE, THE MANUFACTURER SHALL CONFIRM WITH THE INSTALLATION EVALUATION ENGINEER OF RECORD THAT THE INSTALLATIONS SPECIFIED HEREIN ARE CORRECT WITH THE THEN CURRENT TESTING CODE AND APPLICABLE STANDARDS.

INSTALLATION NOTE:
WHEN NECESSARY, INSTALLATION METHODS MAY BE MODIFIED WITH ANY ONE WINDOW SUCH THAT INDIVIDUAL SIDES OF THE WINDOW MAY USE ONE OR THE OTHER ANCHOR METHOD (EXAMPLE: HEAD MAY USE FRAME SCREWS METHOD WHILE OTHER SIDES USE FIN).

FRAME ANCHOR REQUIREMENTS TABLE

OPENING TYPE (SUBSTRATE)	FRAME/CLIP/NAIL FIN TO OPENING FASTENER TYPE	MINIMUM EMBED	MINIMUM EDGE DIST.
(1) FRAME SCREWS			
MIN. 2X4 WOOD FRAME OR BUCK (MIN. GR. 3 & G=0.55)	NO. 10 SMS OR WOOD SCREW	1 1/4"	3/4"
MIN. 18 GA. 33 KSI METAL STUD	NO. 10 GR. 5 SELF TAP/DRILL SCREW	FULL	1/2"
MIN. 1/8" THK A36 STEEL	NO. 10 GR. 5 SELF TAP/DRILL SCREW	FULL	1/2"
MIN. 1/8" THK 6063-T5 ALUM.	NO. 10 GR. 5 SELF TAP/DRILL SCREW	FULL	1/2"
MIN. C-90 CMU OR 2500 PSI CONCRETE	(2) 1/4" CONCRETE SCREW	1 1/4"	2"
(1) INSTALLATION CLIP SCREWS			
MIN. 2X4 WOOD FRAME OR BUCK (MIN. GR. 3 & G=0.55)	NO. 10 SMS SCREW	1 1/4"	1/2"
MIN. 18 GA. 33 KSI METAL STUD	NO. 10 GR. 5 SELF TAP/DRILL SCREW	FULL	1/2"
MIN. 1/8" THK A36 STEEL	NO. 10 GR. 5 SELF TAP/DRILL SCREW	FULL	1/2"
MIN. 1/8" THK 6063-T5 ALUM.	NO. 10 GR. 5 SELF TAP/DRILL SCREW	FULL	1/2"
2500 PSI CONCRETE	(2) 3/16" CONCRETE SCREW	1 1/4"	2"
(3) NAILING FIN FASTENERS			
MIN. 2X4 WOOD FRAME OR BUCK (MIN. GR. 3 & G=0.55)	NO. 8 SMS SCREW	1 3/8"	1/2"
MIN. 2X4 WOOD FRAME OR BUCK (MIN. GR. 3 & G=0.55)	11 GA. ROOFING NAIL	1 3/8"	1/2"
MIN. 1/8" THK A36 STEEL	NO. 8 GR. 5 SELF TAP/DRILL SCREW	FULL	1/2"
MIN. 1/8" THK 6063-T5 ALUM.	NO. 8 GR. 5 SELF TAP/DRILL SCREW	FULL	1/2"

- (1) FRAME AND INSTALLATION CLIP SCREWS SHALL BE A PAN OR HEX HEAD SCREW.
- (2) CONCRETE SCREWS SHALL BE ELCO ULTRACONS (C.S.), ELCO CRETE-FLEX (S.S.), ITW RAMST/RED HEAD TAPCONS (C.S. OR S.S.) OR HILTI Kwik-CON II (C.S. OR S.S.).
- (3) WHEN SCREWS ARE USED WITH THE NAIL FIN, THEY MUST BE A PAN HEAD OR WAFLE HEAD SCREW OR HAVE A FLAT WASHER AT THE SCREW HEAD.



NOTE: FOR MAX. SINGLE WINDOW FRAME DIMENSIONS AND ALLOWABLE DESIGN PRESSURE, SEE APPLICABLE FLORIDA APPROVAL

(NAIL FIN MOUNT CONDITION)

EXTERIOR ELEVATION: SINGLE WINDOW

SCALE: 3/4" = 1'-0"

EXTERIOR ELEVATION: SINGLE WINDOW

SCALE: 3/4" = 1'-0"

(FRAME SCREW MOUNT CONDITION)

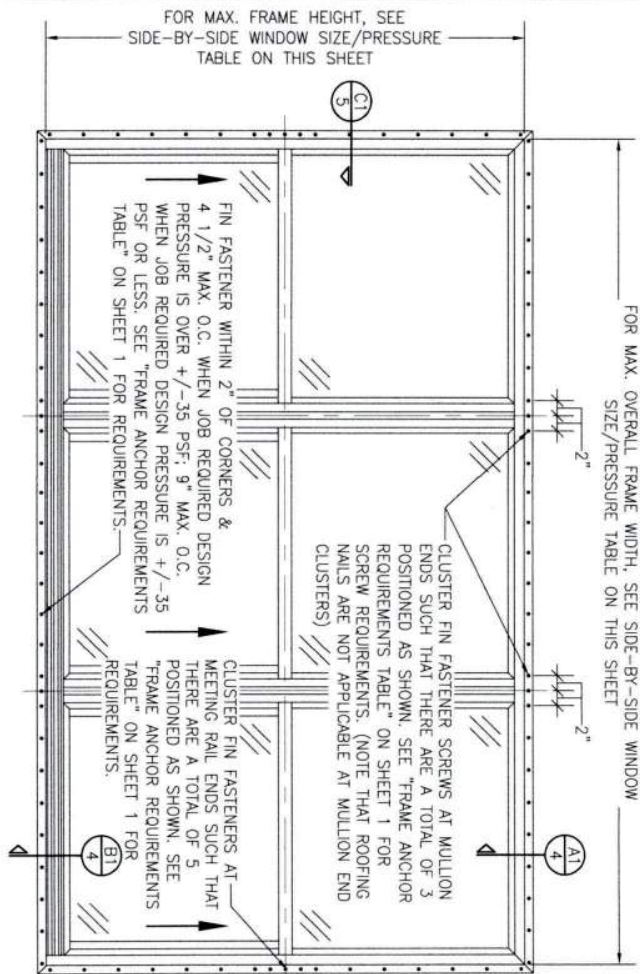
SIDE JAMB ANCHOR SPACING TABLE	
MAXIMUM FRAME WIDTH (IN.)	MAXIMUM O.C. SPACING (IN.)
54	12
48	13
36	17

ANCHOR/SUBSTRATE EVALUATION NOTE:

ANCHORS IN THESE SPECIFIED SUBSTRATES HAVE BEEN ANALYZED IN ACCORDANCE WITH THEIR APPLICABLE STANDARDS(S) AND ARE FOUND TO BE CAPABLE OF SUPPORTING ALL LOADS IMPOSED ON THEM UNDER THE GUIDELINES OF THIS DOCUMENT. ANY SUBSTRATES OR CONDITIONS OUTSIDE OF WHAT IS SHOWN HEREIN SHALL BE SUBJECT TO JOB SPECIFIC ENGINEER'S REVIEW & CERTIFICATION.

THESE DRAWINGS ARE APPLICABLE ONLY TO THE PRODUCT AND/OR INSTALLATION OF ANY OTHER PRODUCT NOR MAY OF ANY PRODUCT NOT PRODUCED BY THE MANUFACTURER STATED ON THESE DRAWINGS.

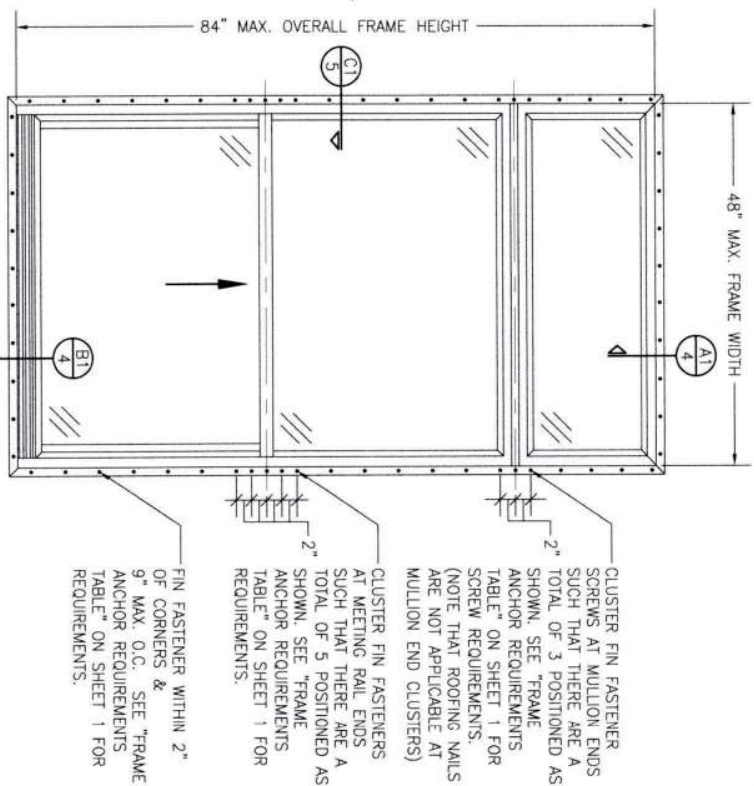
DRAWING NO. 1867		SHEET NO. 1 OF 5	
C		REV. 1	
WARREN W. SCHAEFER, P.E. P.E. NO. 44135			
DRAWING TITLE: 250 SERIES VINYL SINGLE HUNG NON-IMPACT WINDOW			
CONSULTANTS: W. W. SCHAEFER ENGINEERING & CONSULTING, P.A. 26376 NADIR ROAD, UNIT 309 PUNTA GORDA, FL 33983 PHONE: 561-744-3424		MANUFACTURER: Pella PELLA CORPORATION 102 MAIN STREET PELLA, IA 50219 641-621-1000	
CERTIFICATION		REVISION	
A1		UPDATE FOR NEW TESTING	
B1		ADDED 109 X 72 WINDOW	
C1		UPDATE TO CURRENT STANDARDS	
DATE: 02/07/14		DATE: 03/09/23	



**EXTERIOR ELEVATION:
SIDE-BY-SIDE WINDOW**
SCALE: 3/4" = 1'-0"
(NAIL FIN MOUNT CONDITION)

ALLOWABLE SIDE-BY-SIDE WINDOW SIZE/PRESSURE TABLE			
MAXIMUM OVERALL FRAME WIDTH DIMENSION (IN.)	MAXIMUM FRAME HEIGHT DIMENSION (IN.)	ALLOWABLE PRESSURE (+/- PSF)	
TRIPLE WINDOW			
109	63	35	
109	72	30	
DOUBLE WINDOW			
96	72	35	
72	65 1/2	50	

PRESSURES & CONDITIONS SHOWN IN THIS DRAWING ARE GOVERNED BY INSTALLATION REQUIREMENTS ONLY. THE GOVERNING CONDITIONS ON ANY SPECIFIC PRODUCT SHALL BE THE LESSER OF THOSE SPECIFIED IN THE PRODUCTS STATE APPROVAL OR THAT SHOWN IN THESE DRAWINGS.



**EXTERIOR ELEVATION:
SINGLE WINDOW WITH TRANSOM**
SCALE: 3/4" = 1'-0"
(NAIL FIN MOUNT CONDITION)

ALLOWABLE DESIGN PRESSURE (TRANSOM UNITS ONLY)
+/-35 PSF

NO.	REVISION	DESCRIPTION	BY	DATE

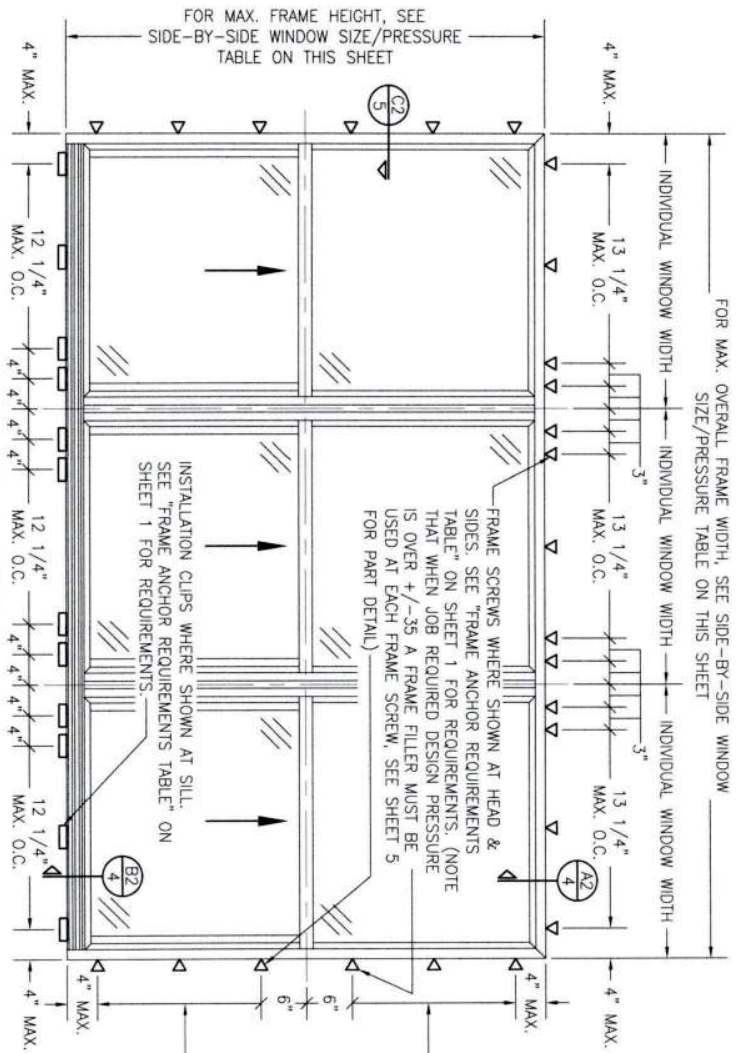
PELLA CORPORATION
102 MAIN STREET
PELLA, IA 50219
641-621-1000



CONSULTANTS
W. W. SCHAEFER ENGINEERING & CONSULTING, P.A.
26378 NADIR ROAD; UNIT 309
PUNTA GORDA, FL 33983
PHONE: 561-744-3424

CERTIFICATION
WARREN W. SCHAEFER, P.E.
P.E. NO. 44135

DRAWING NO.
1867
REV.
C
SHEET NO.
2 OF 5



**EXTERIOR ELEVATION:
SIDE-BY-SIDE WINDOW**

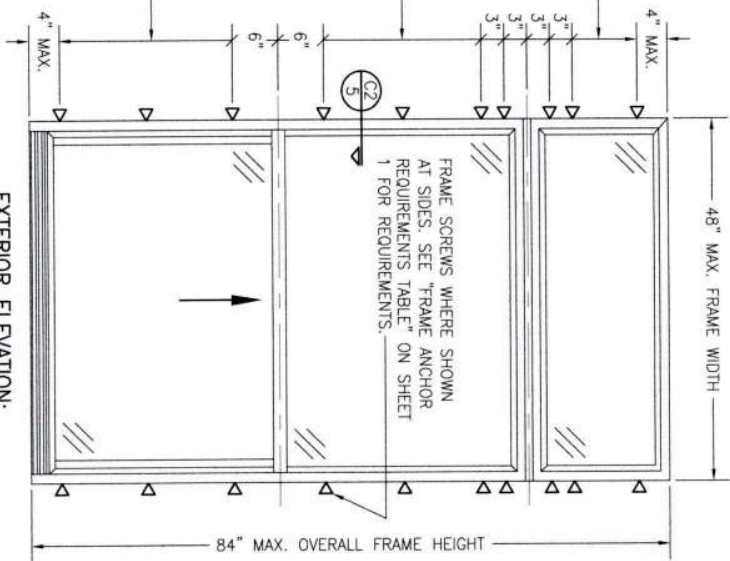
SCALE: 3/4" = 1'-0"

(FRAME SCREW AND CLIP MOUNT CONDITION)

ALLOWABLE SIDE-BY-SIDE WINDOW SIZE/PRESSURE TABLE		
MAXIMUM OVERALL FRAME WIDTH DIMENSION (IN.)	MAXIMUM FRAME HEIGHT DIMENSION (IN.)	ALLOWABLE PRESSURE (+/- PSF)
TRIPLE WINDOW		
109	63	35
109	72	30
DOUBLE WINDOW		
96	72	35
72	65 1/2	50

SIDE JAMB ANCHOR SPACING TABLE		
MAXIMUM INDIVIDUAL WINDOW WIDTH (IN.)	MAXIMUM O.C. SPACING (IN.)	
48	13	
36	17	

PRESSURES & CONDITIONS SHOWN IN THIS DRAWING ARE GOVERNED BY INSTALLATION REQUIREMENTS ONLY. THE GOVERNING CONDITIONS ON ANY SPECIFIC PRODUCT SHALL BE THE LESSER OF THOSE SPECIFIED IN THE PRODUCTS STATE APPROVAL OR THAT SHOWN IN THESE DRAWINGS.




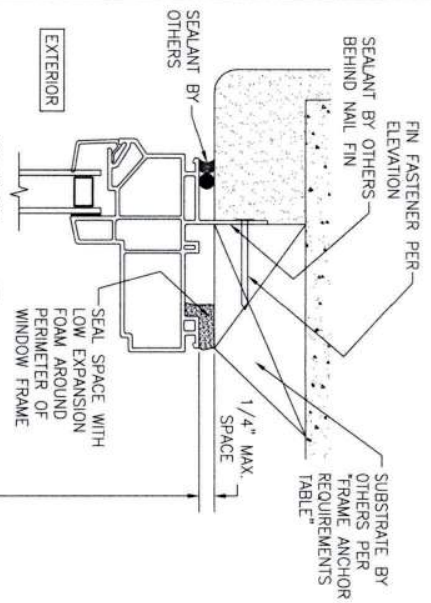
**EXTERIOR ELEVATION:
SINGLE WINDOW WITH TRANSOM**

SCALE: 3/4" = 1'-0"

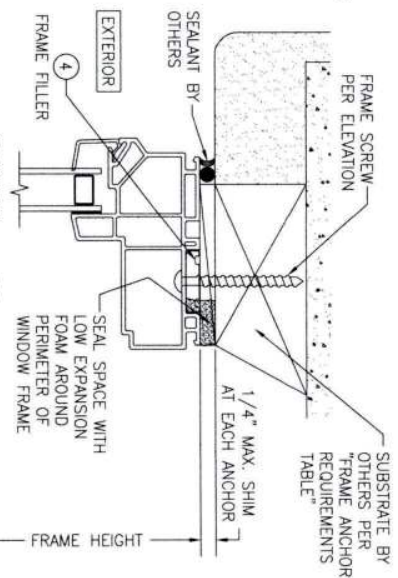
(FRAME SCREW MOUNT CONDITION)

ALLOWABLE DESIGN PRESSURE (TRANSOM UNITS ONLY)
+/-35 PSF

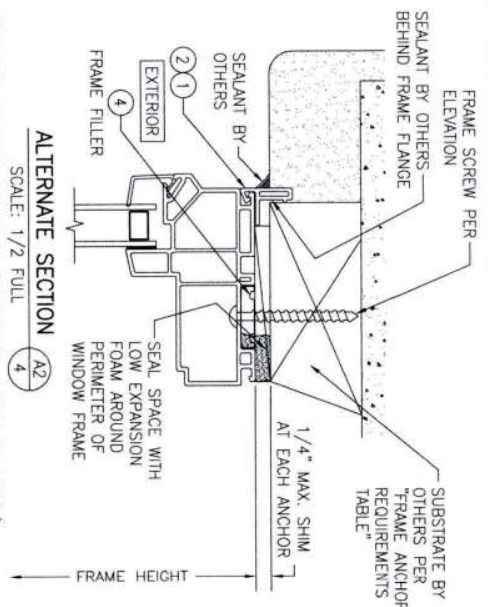
CERTIFICATION DRAWING NO. 1867 SHEET NO. 3 OF 5		DRAWING TITLE 250 SERIES VINYL SINGLE HUNG NON-IMPACT WINDOW		CONSULTANTS W. W. SCHAEFER ENGINEERING & CONSULTING, P.A. 26376 NADIR ROAD, UNIT 509 PUNTA GORDA, FL 33983 PHONE: 561-744-3424		MANUFACTURER  PELLA CORPORATION 102 MAIN STREET PELLA, IA 50219 641-621-1000		REVISION <table border="1"> <tr> <th>NO.</th> <th>REVISION DESCRIPTION</th> <th>BY</th> <th>DATE</th> </tr> <tr><td> </td><td> </td><td> </td><td> </td></tr> <tr><td> </td><td> </td><td> </td><td> </td></tr> <tr><td> </td><td> </td><td> </td><td> </td></tr> <tr><td> </td><td> </td><td> </td><td> </td></tr> </table>		NO.	REVISION DESCRIPTION	BY	DATE																	DRAWN BY: W.B.M. CHECKED BY: W.B.M. DATE: 02/05/14	
NO.	REVISION DESCRIPTION	BY	DATE																												



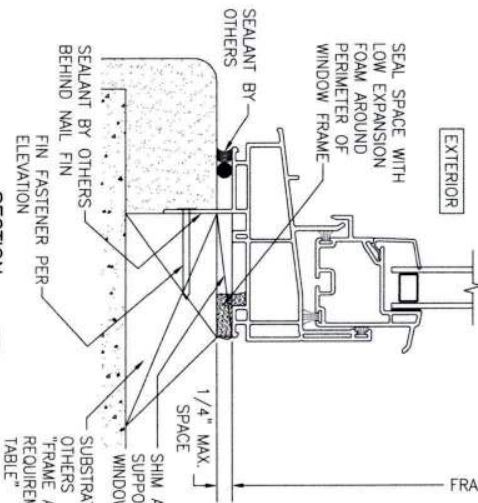
SECTION A1
SCALE: 3/4 FULL
(NAIL FIN MOUNT)



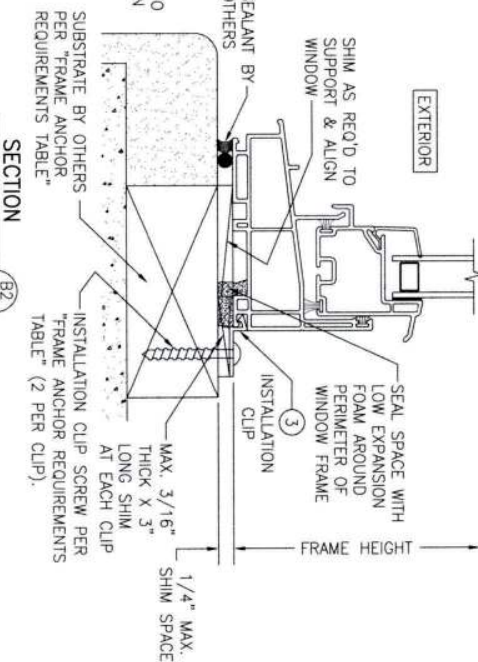
SECTION A2
SCALE: 3/4 FULL
(FRAME SCREW MOUNT CONDITION)



ALTERNATE SECTION A2
SCALE: 1/2 FULL
(FRAME SCREW MOUNT CONDITION WITH FLANGE)




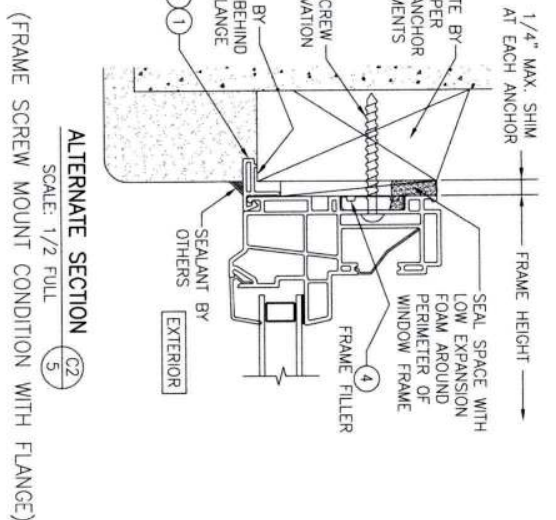
SECTION B1
SCALE: 3/4 FULL
(NAIL FIN MOUNT)



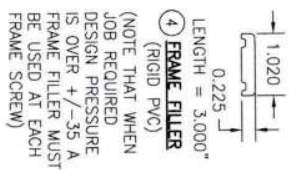
SECTION B2
SCALE: 3/4 FULL
(INSTALLATION CLIP MOUNT CONDITION)

NO.	REVISION	DESCRIPTION	BY	DATE
1				
2				
3				
4				
5				

DRAWING NO. 1867	REV. C	CERTIFICATION WARREN W. SCHAEFER, P.E. P.E. NO. 44135	DRAWING TITLE 250 SERIES VINYL SINGLE HUNG NON-IMPACT WINDOW	CONSULTANTS W. W. SCHAEFER ENGINEERING & CONSULTING, P.A. 26376 NADIR ROAD; UNIT 309 PUNTA GORDA, FL 33983 PHONE: 561-744-3424	MANUFACTURER 	PELLA CORPORATION 102 MAIN STREET PELLA, IA 50219 641-621-1000
---------------------	-----------	---	---	---	---	---



(HEAD SECTION SHOWN; SIDES ARE INSTALLED THE SAME)
(DIRECT MOUNT CONDITION IS NOT APPLICABLE AT SILL)
(FOR DETAIL NOT SHOWN, SEE OTHER SECTIONS)

[illegible]

IMPACT WINDOW

PELLA CORPORATION
102 MAIN STREET
PELLA, IA 50219
641-621-1000

DRAWING TITLE
250 SERIES VINYL SIN

CONSULTANTS
W. W. SCHAEFER ENGINEERING
& CONSULTING, P.A.
26376 NADIR ROAD; UNIT 309
PUNTA GORDA, FL 33983
PHONE: 561-744-3424

CERTIFICATION

WARREN W. SCHAEFER, P.E.
P.E. NO. 44135

DRAWING NO.	REV
1867	C
SHEET NO.	
5	OF 5