

TABLE 1 BOW/RAFTER FRAME, END POST, GROUND ANCHOR AND PANEL FASTENER SPACING SPECIFICATIONS						
RISK CATEGORY	WIND EXPOSURE CATEGORY	ULTIMATE WIND SPEED (MPH)	NOMINAL WIND SPEED (MPH)	MAXIMUM RAFTER/BOW AND END POST SPACING (FEET)	AVERAGE FASTENER SPACING ON-CENTERS ALONG RAFTERS OR PURLINS, AND POSTS OR GIRTS (INCHES)	
					INTERIOR BOWS/RAFTERS	END BOWS/RAFTERS
I, II, III, or IV	B, C, or D	115 TO 150	89 TO 116	5.0	6	6
		151 TO 180	117 TO 139	4.0	6	6
NOTES: 1. SPECIFICATIONS APPLICABLE TO 26 OR 29 GAUGE METAL PANELS FASTENED DIRECTLY TO 12,14 OR 15 GAUGE STEEL TUBE BOW FRAMES. 2. FASTENERS CONSIST OF #12-14X3/4" SDFS SELF-DRILLING SCREWS WITH CONTROL SEAL WASHER. 3. SPECIFICATIONS APPLICABLE ONLY FOR MEAN ROOF HEIGHT OF 20 FEET OR LESS, AND ROOF SLOPES OF 14°(3:12 PITCH). SPACING REQUIREMENTS FOR OTHER ROOF HEIGHTS AND/OR SLOPES MAY VARY. 4. GROUND ANCHOR REQUIREMENTS ARE 1 @ EACH CORNER AND ONE EVERY OTHER INTERIOR BOW/RAFTER POST LOCATION, AT MAXIMUM OF 10' O.C., AND BOTH SIDES OF OPENINGS WHERE BASE RAIL IS ABSENT. 5. GROUND ANCHORS ARE NOT REQUIRED WITH CONCRETE SLAB CONSTRUCTION.						

WINDOW AND DOOR NOTE

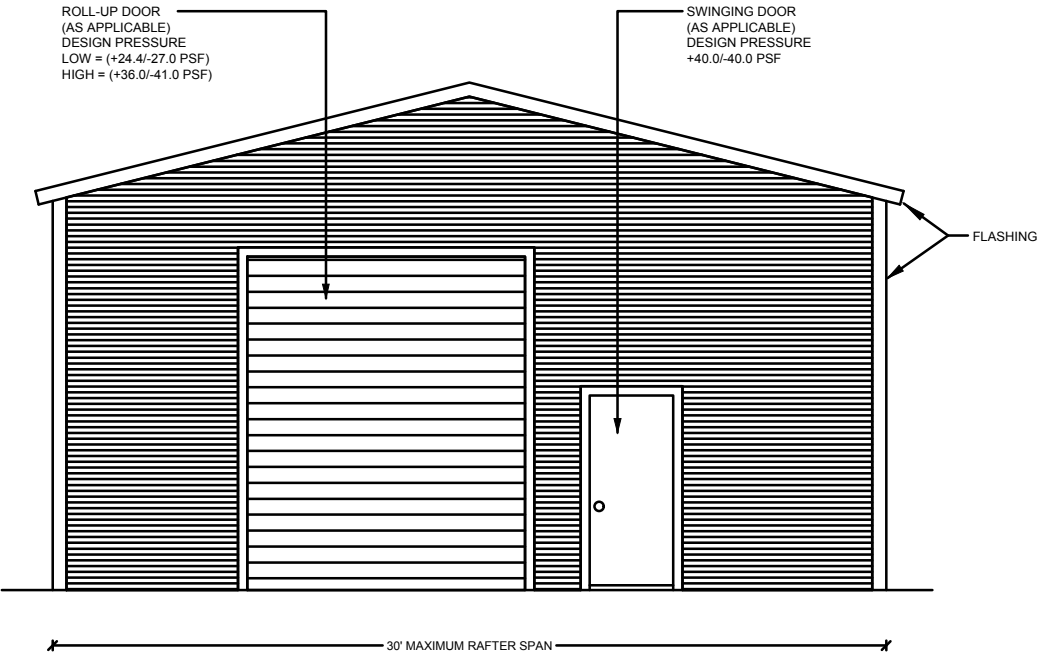
EXTERIOR WINDOWS AND GLASS DOORS SHALL BE TESTED BY AN APPROVED INDEPENDENT TESTING LABORATORY, AND BEAR AN AAMA OR WDMA OR OTHER APPROVED LABEL IDENTIFYING THE MANUFACTURER, PERFORMANCE CHARACTERISTICS AND APPROVED PRODUCT EVALUATION ENTITY TO INDICATE COMPLIANCE WITH THE REQUIREMENTS OF THE FOLLOWING SPECIFICATION.

ANSI/AAMA/NWDA 101/1S 2/97
THE CONSTRUCTION SHALL BE TESTED IN ACCORDANCE WITH ASTM E 330, STANDARD TEST METHODS FOR STRUCTURAL PERFORMANCE OF EXTERIOR WINDOWS, CURTAIN WALLS, AND DOORS BY UNIFORM STATIC AIR PRESSURE.

DESIGN WAS DONE IN ACCORDANCE WITH THE 2020 FLORIDA BUILDING CODE 7TH EDITION(FBC) 2020 SUPPLEMENT AMENDMENTS 2006 INTERNATIONAL BUILDING CODE (IBC), 2009 IBC AND 2012 IBC.

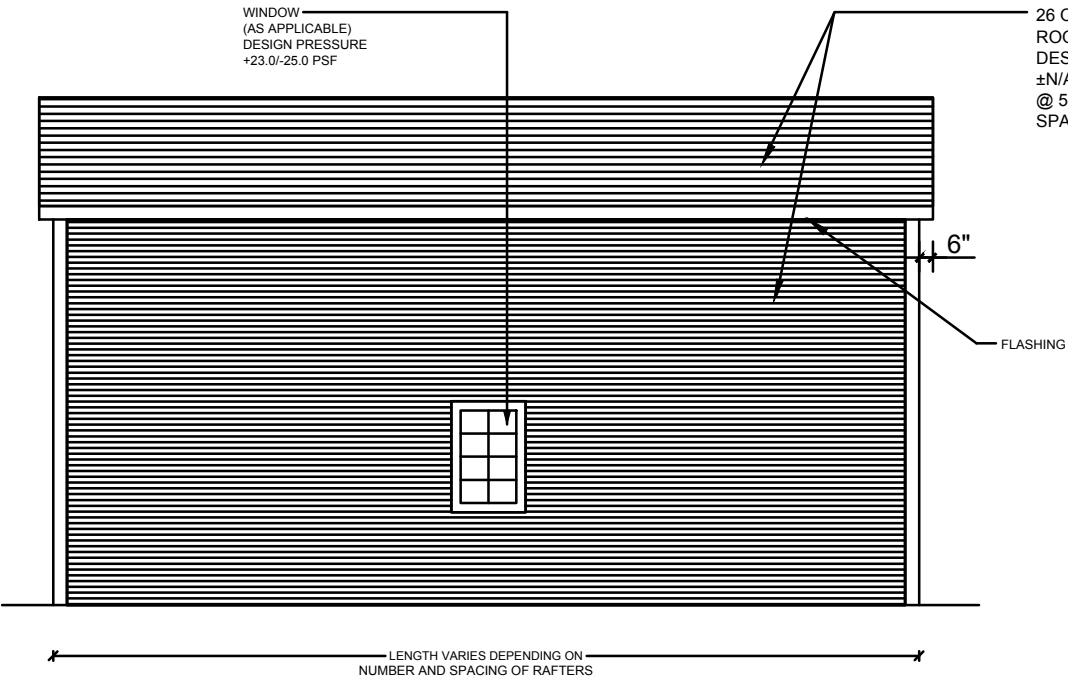
GENERAL NOTES:

- ALL STEEL SHALL BE 50 KSI STEEL.
- FASTEN METAL ROOF AND WALL PANELS TO FRAMING WITH 1/4" X 3/4" SELF DRILLING FASTENERS WITH CONTROL SEAL WASHER @ 6" O.C. AVERAGE.
- ALL FIELD CONNECTIONS SHALL BE #12-14X3/4" SDFS SELF DRILLING SCREWS.
- ALL SHOP CONNECTIONS SHALL BE WELDED.
- CONCRETE EXPANSION ANCHORS SHALL BE WEJ-IT ANKR-TITE MODEL AT 1252, OR SLEEVE ANCHOR MODEL HSA 1260, OR EQUIVALENT. GROUND ANCHOR REQUIREMENTS ARE 1@ EACH CORNER & ONE EVERY OTHER INTERIOR RAFTER POST LOCATION. AT A MAXIMUM 10'-0" O.C., AND BOTH SIDES OF OPENINGS WHERE BASE RAIL IS ABSENT. GROUND ANCHORS ARE NOT REQUIRED FOR CONCRETE FOOTING AND/OR CONCRETE SLAB CONSTRUCTION.
- POST/RAFTER BRACING: BRACE ON EVERY POST/RAFTER CONNECTION, EXCEPT FOR END WALLS.



TYPICAL END ELEVATION-HORIZONTAL ROOF

SCALE: NOT TO SCALE



TYPICAL SIDE ELEVATION-HORIZONTAL ROOF

SCALE: NOT TO SCALE

- NOTE:
- THIS ITEM HAS BEEN SIGNED AND SEALED BY RAM A. GOEL USING A DIGITAL SIGNATURE & DATE.
 - PRINTED COPIES OF THIS DOCUMENT ARE NOT CONSIDERED SIGNED & SEALED. THIS SIGNATURE MUST BE VERIFIED ON ANY ELECTRONIC COPIES.

THIS DRAWING IS AN INSTRUMENT OF SERVICE AND SHALL REMAIN THE PROPERTY OF THE ENGINEER, AND SHALL NOT BE REPRODUCED, PUBLISHED OR USED IN ANY WAY WITHOUT THE WRITTEN CONSENT OF THE ENGINEER. COPYRIGHT 2021 NOT PUBLISHED THIS IS TO CERTIFY THAT I HAVE REVIEWED THIS PLAN AND FOUND TO BE IN COMPLIANCE WITH CHAPTER 16 OF 2020 7TH EDITION FLORIDA BUILDING CODE AND APPLICABLE SUPPLEMENTS.

RAM A. GOEL, P.E. # 47431

COPIES OF THESE PLANS ARE NOT VALID UNLESS EMBOSSED WITH THE SIGNING ENGINEER'S SEAL

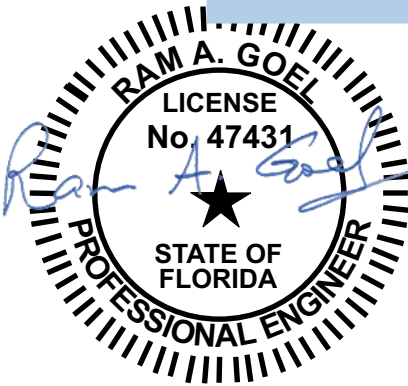


acFche hF8f xpPr) R PPrk
(hKFNKS3F
f yx (e m-
-f c nhox me f (x w y hn - xy xc
37S1T - cf - cxxo : n a p w x m
he nhP n SSCNK
m OKIKM7HNTC
(00 3SETKIHLNC
F

Job # 2173
Drawn By: S.K.
Checked By: R.G.

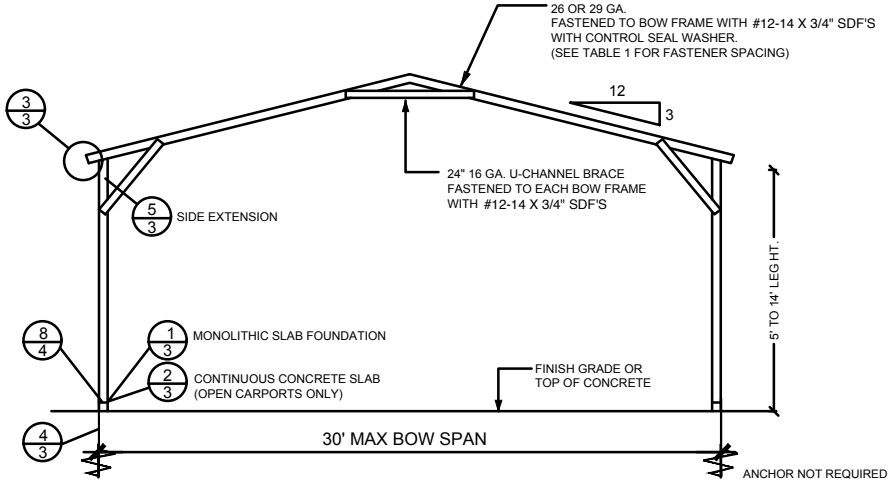
Issue Date:08-18-21		
Revisions:		
No.	Date	Description
1	11	
2	11	
3	11	

Digitally signed by Ram Goel
DN:
E=SoneyFMllc@yahoo.com
CN=Ram Goel,
OU=ENGINEERING,
O=Soney FM LLC,
L=Tampa, S=Florida, C=US
Date: 2021.09.29
10:48:28-04'00'

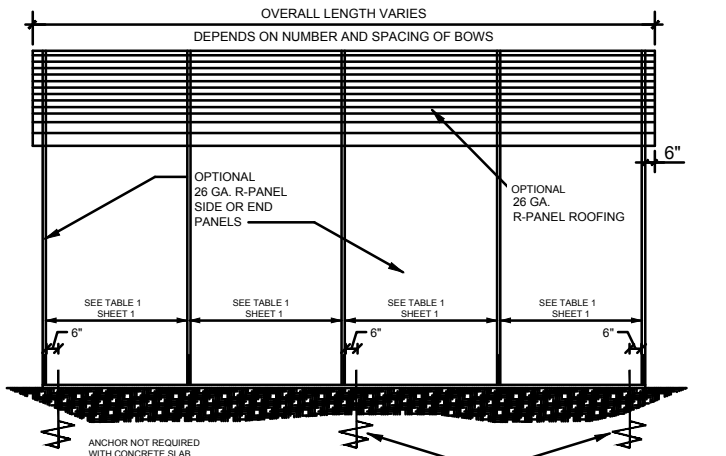


THE FOLLOWING IS COMPLIANT TO THE FLORIDA BUILDING CODE 2020, 7TH EDITION AND ASCE 7-16 FOR WIND LOADS OF 180 MPH

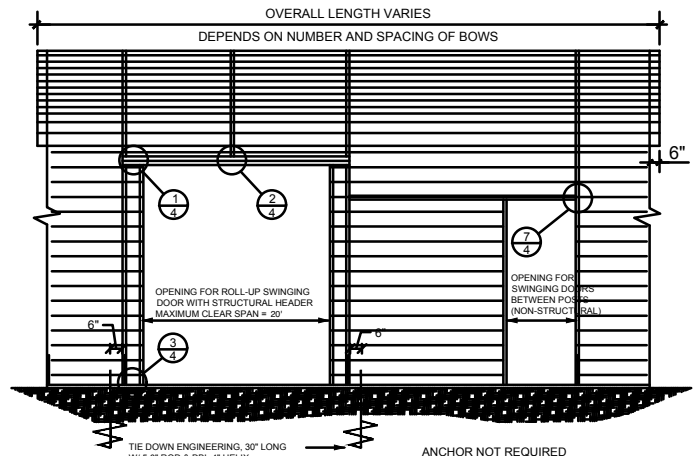
PREFABRICATED UTILITY STRUCTURE
ELITE METAL MANUFACTURING,LLC
10121 88TH TRACE
LIVE OAK, FL 32060



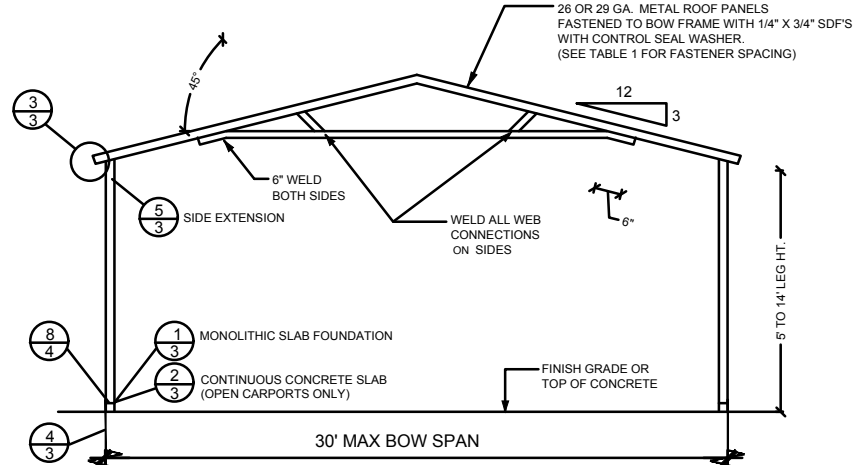
TYPICAL BOW SECTION
NOT TO SCALE



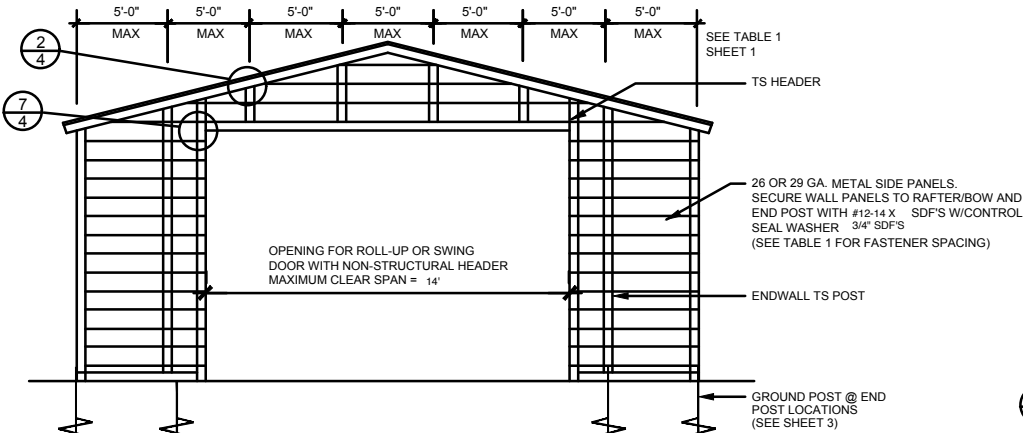
SIDE ELEVATION
NOT TO SCALE



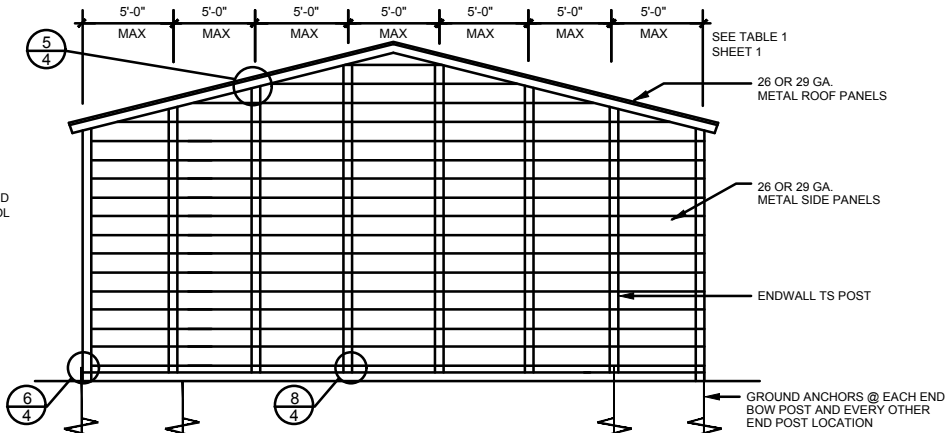
SIDE OPENINGS
NOT TO SCALE



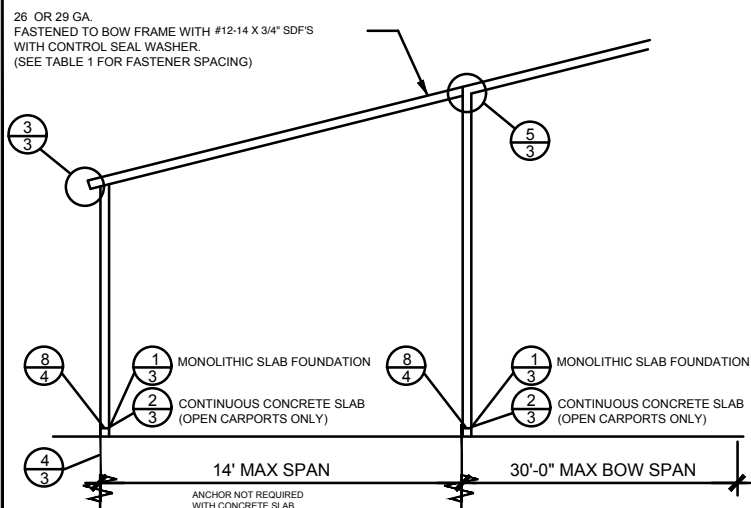
TRUSSED BOW SECTION
NOT TO SCALE



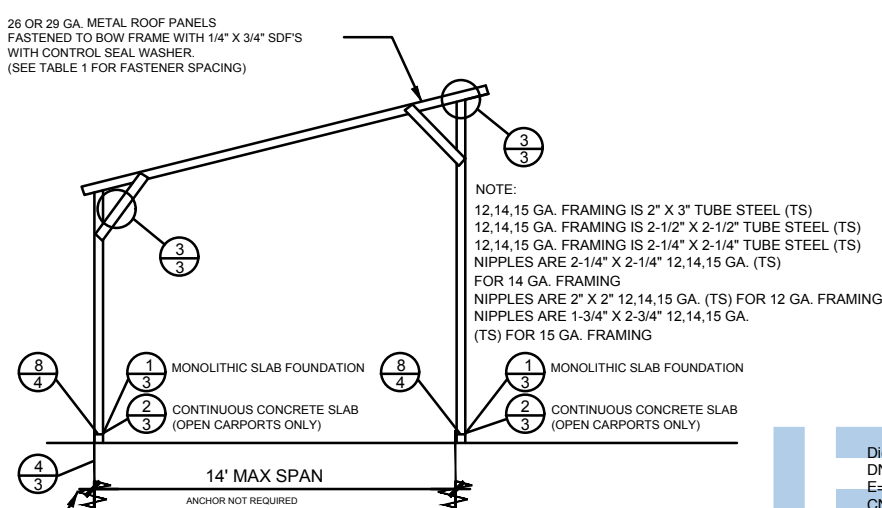
END WALL OPENING
NOT TO SCALE



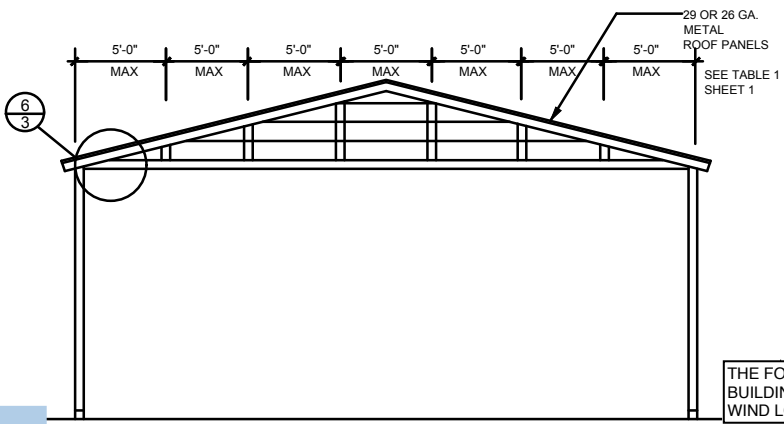
END WALL SECTION
NOT TO SCALE



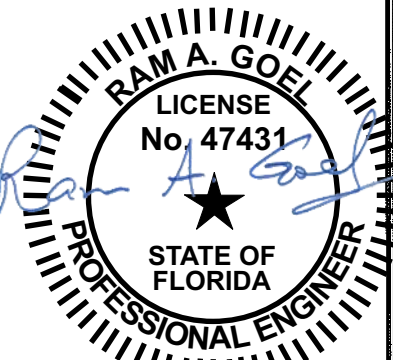
TYPICAL SIDE EXTENSION SECTION
NOT TO SCALE



TYPICAL FREESTANDING LEAN-TO
NOT TO SCALE



GABLED OPEN END WALL SECTION
NOT TO SCALE



THE FOLLOWING IS COMPLIANT TO THE FLORIDA BUILDING CODE 2020, 7TH EDITION AND ASCE 7-16 FOR WIND LOADS OF 180 MPH

- NOTE:
1. THIS ITEM HAS BEEN SIGNED AND SEALED BY RAM A. GOEL USING A DIGITAL SIGNATURE & DATE.
 2. PRINTED COPIES OF THIS DOCUMENT ARE NOT CONSIDERED SIGNED & SEALED. THIS SIGNATURE MUST BE VERIFIED ON ANY ELECTRONIC COPIES.

RAM A. GOEL, P.E. # 47431
COPIES OF THESE PLANS ARE NOT VALID UNLESS EMBOSSED WITH THE SIGNING ENGINEER'S SEAL

a c f c h e h F 8 f x p m h a P m k
(h a k f n k n s 3 f)
f y x (e m -
- f c n h o x m f (x v f y h n - x y x c
3 7 S I T - c f - c x o - n a p w x m
h e m h P n s s c n k
m 0 K 1 K H 1 7 H K T C
(0 0 3 S E T K I H I N C F

Job # 2173
Drawn By: S.K.
Checked By: R.G.

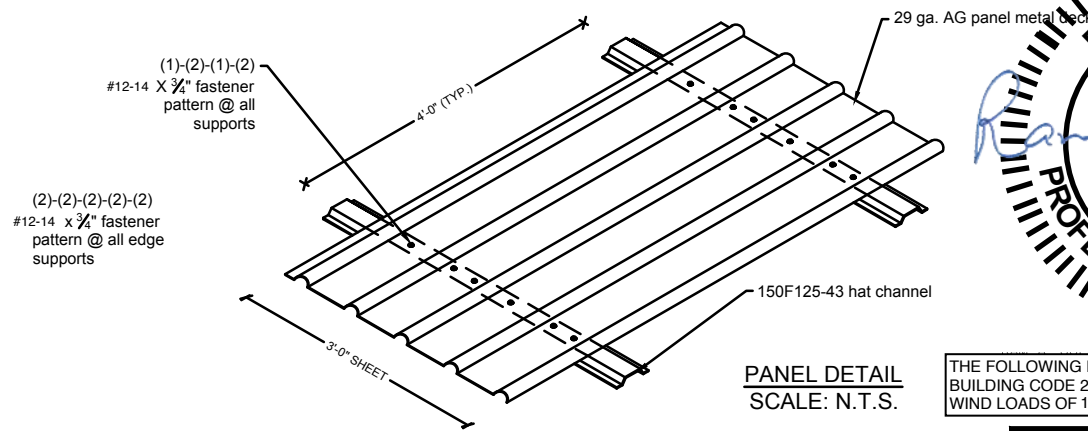
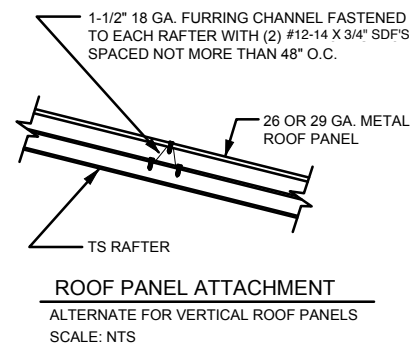
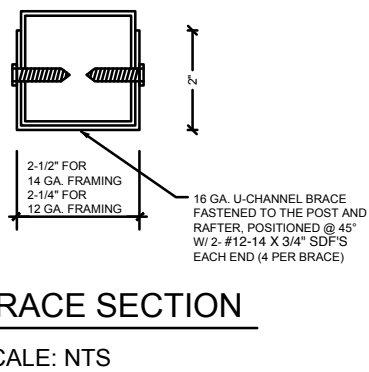
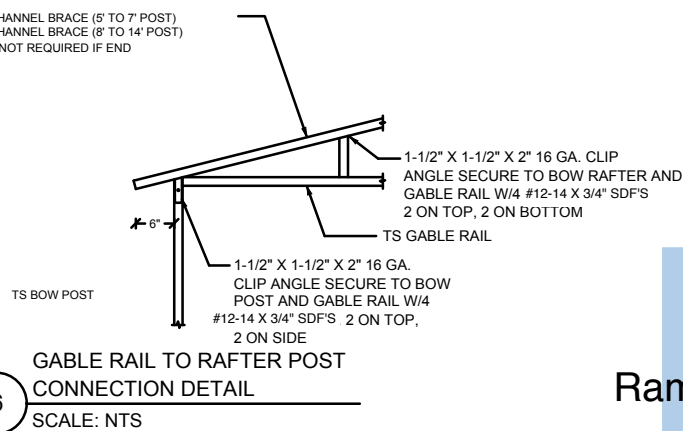
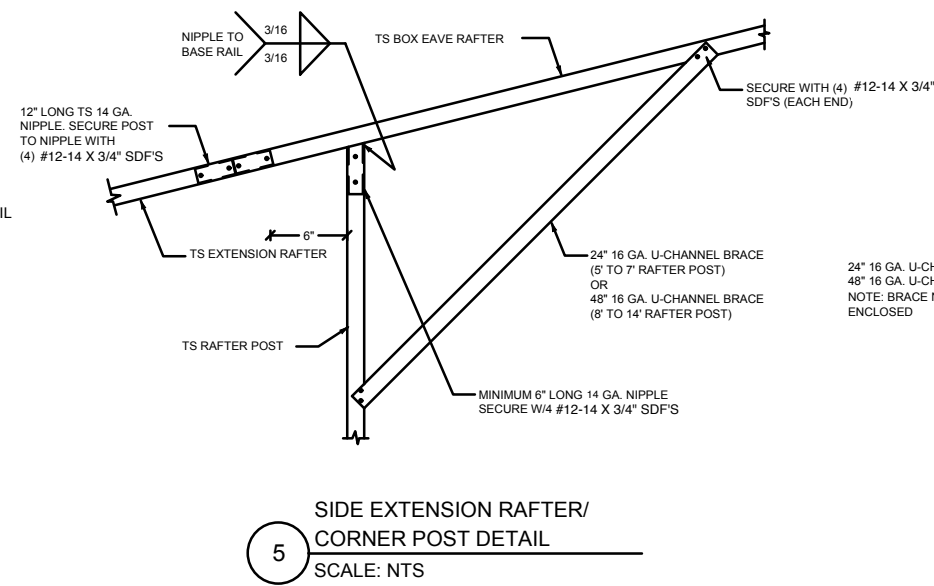
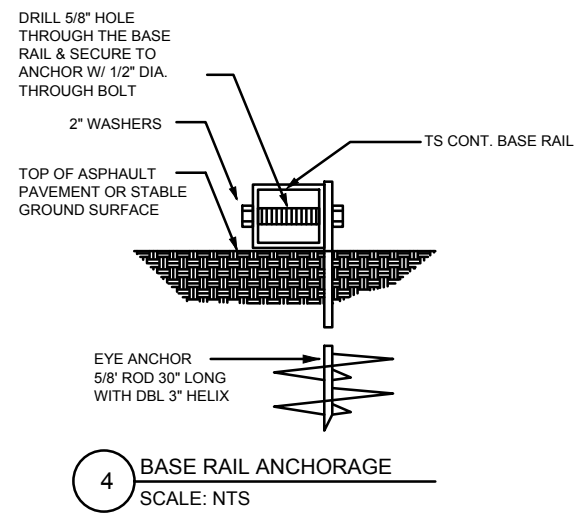
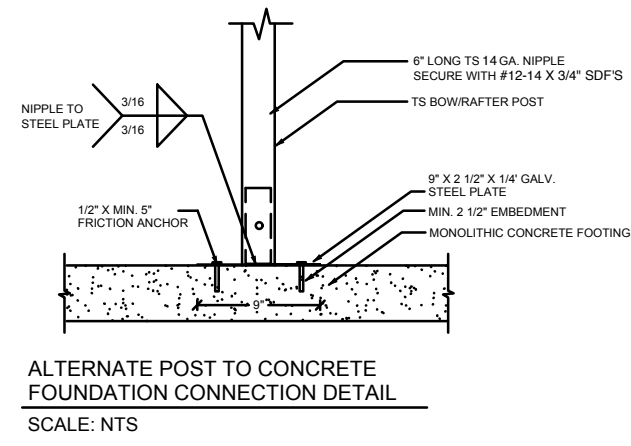
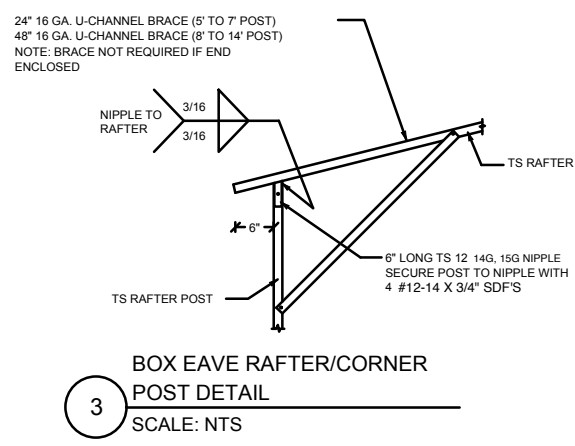
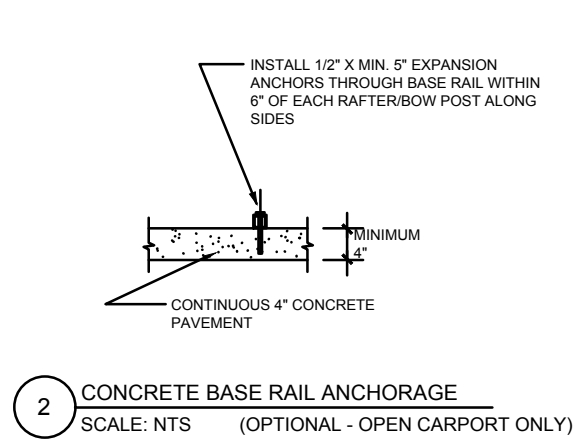
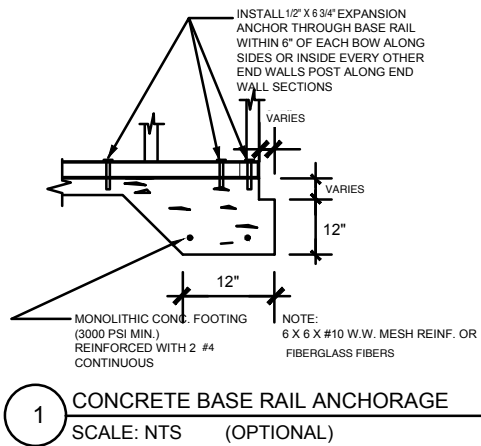
Issue Date: 08-18-21

Revisions:

No.	Date	Description
1	11	
2	11	
3	11	

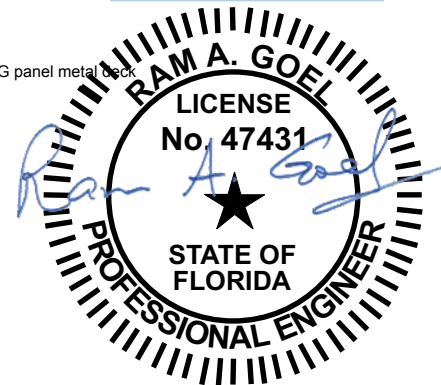
PREFABRICATED UTILITY STRUCTURE

ELITE METAL MANUFACTURING, LLC
10121 88TH TRACE
LIVE OAK, FL 32060



NOTE:
1. THIS ITEM HAS BEEN SIGNED AND SEALED BY
RAM A. GOEL USING A DIGITAL SIGNATURE & DATE.
2. PRINTED COPIES OF THIS DOCUMENT ARE NOT
CONSIDERED SIGNED & SEALED. THIS SIGNATURE MUST
BE VERIFIED ON ANY ELECTRONIC COPIES.

Digitally signed by Ram Goel
DN:
E=Soneyfmllc@yahoo.com,
CN=Ram Goel,
OU=ENGINEERING,
O=Soney FM LLC,
L=Tampa, S=Florida, C=US
Date: 2021.09.29
10:49:16-04'00'



THE FOLLOWING IS COMPLIANT TO THE FLORIDA
BUILDING CODE 2020, 7TH EDITION AND ASCE 7-16 FOR
WIND LOADS OF 180 MPH

THIS DRAWING IS AN INSTRUMENT OF SERVICE AND SHALL REMAIN THE PROPERTY OF THE
ENGINEER, AND SHALL NOT BE REPRODUCED, PUBLISHED OR USED IN ANY WAY WITHOUT
THE WRITTEN CONSENT OF THE ENGINEER. COPYRIGHT 2021. NOT PUBLISHED.
THIS IS TO CERTIFY THAT I HAVE REVIEWED THIS PLAN AND FOUND TO BE IN COMPLIANCE
WITH CHAPTER 16 OF 2020 7TH EDITION FLORIDA BUILDING CODE AND APPLICABLE SUPPLEMENTS.

RAM A. GOEL, P.E. # 47431

COPIES OF THESE PLANS ARE NOT VALID UNLESS
EMBOSSED WITH THE SIGNING ENGINEER'S SEAL

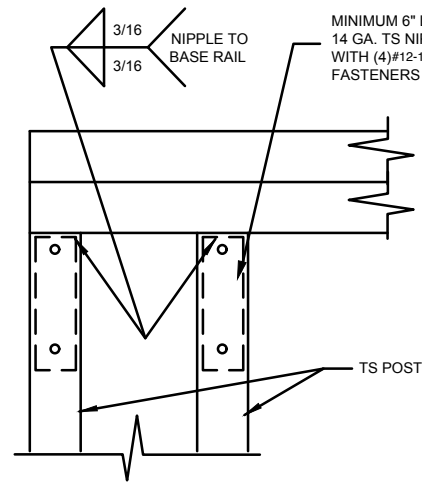
acFche hF8f xpDn B PnRk
(mkFNKS3F
f y x (e m-
- f c nhox m f (x w y h n- xy xc
37S1T - cf - c x x o : n a p w x m
he mh P n SSCNK
m OKIKIM7HKTIC
(003SETKIHINC
F

Job # 2173
Drawn By: S.K.
Checked By: R.G.

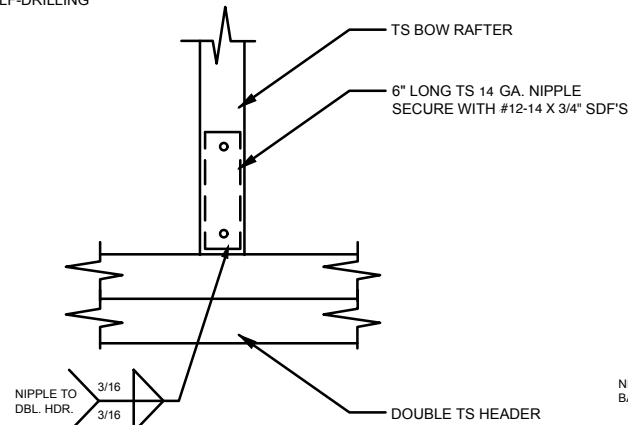
Issue Date: 08-18-21		
Revisions:		
No.	Date	Description
1	11	
2	11	
3	11	
4	11	

PREFABRICATED UTILITY STRUCTURE

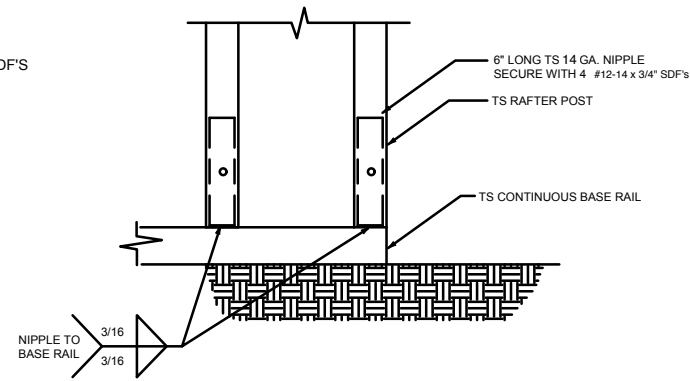
ELITE METAL MANUFACTURING, LLC
10121 88TH TRACE
LIVE OAK, FL 32060



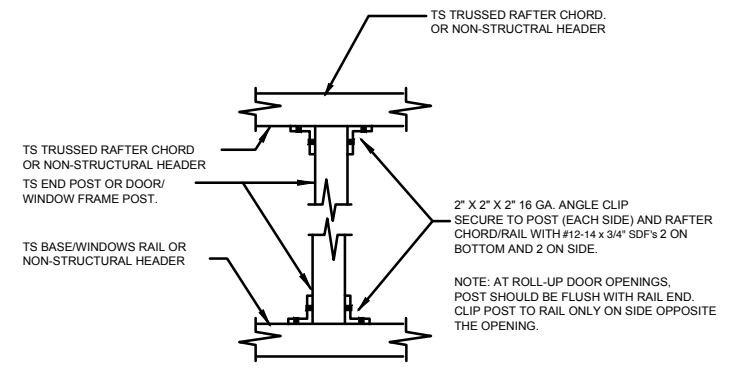
1 RAFTER POST/DBL. HEADER DETAIL
SCALE: NTS



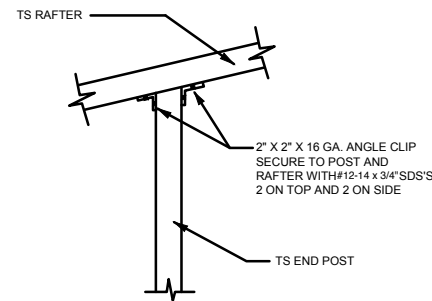
2 RAFTER POST/BASE
BASE RAIL CONNECTION DETAIL
SCALE: NTS



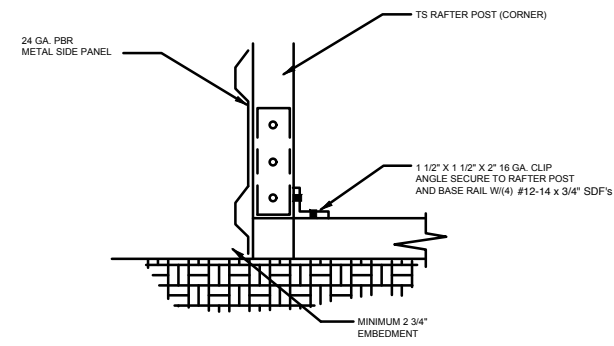
3 RAFTER POST/BASE
BASE RAIL CONNECTION DETAIL
SCALE: NTS



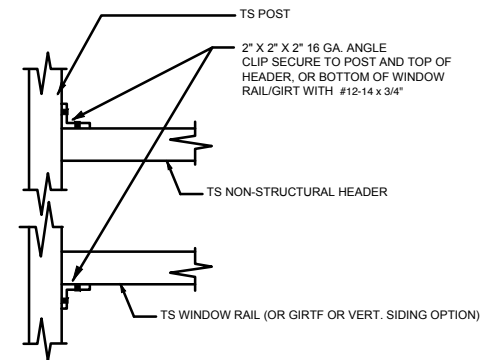
4 POST TO RAIL, TRUSS CHORD, OR
NON-STRUCTURAL HEADER CONN. DETAIL
SCALE: NTS



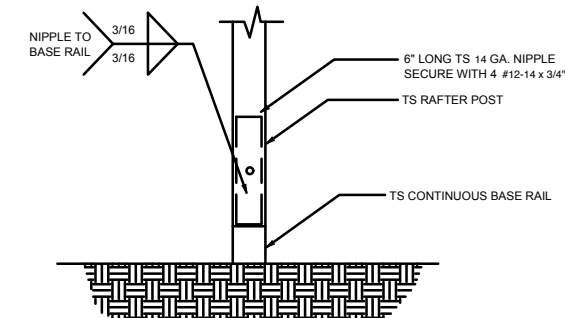
5 END POST/RAFTER CONN. DETAIL
SCALE: NTS



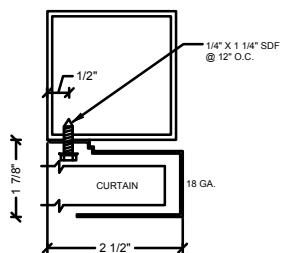
6 END POST/BASE RAIL CONN.
SCALE: NTS



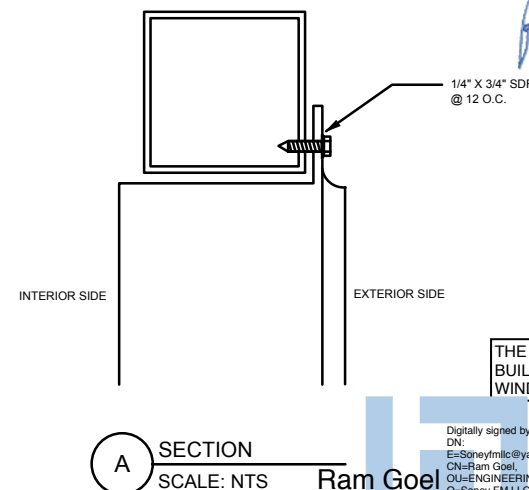
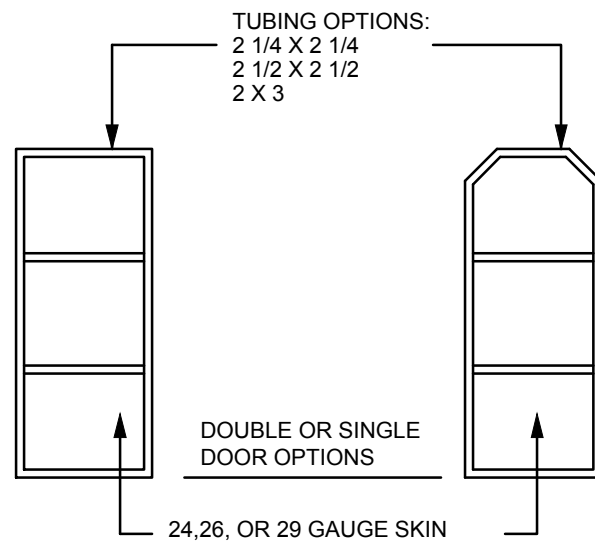
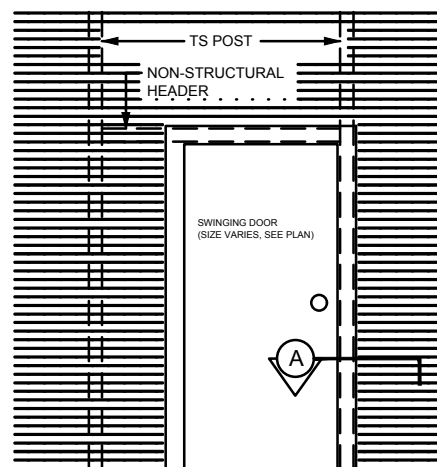
7 NON-STRUCTURAL HEADER, WINDOW
RAIL, OR GIRT TO POST CONN. DETAIL
SCALE: NTS



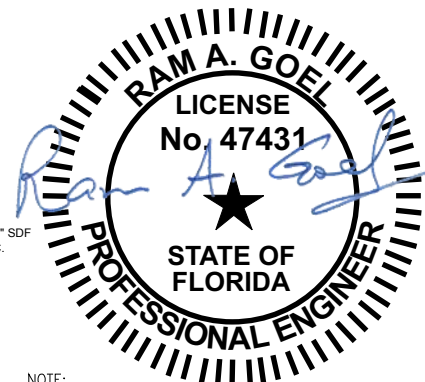
8 POST/BASE RAIL CONN. DETAIL
SCALE: NTS



SECTION THROUGH ROLL UP
DOOR HEADER
SCALE: NTS



A SECTION
SCALE: NTS



NOTE:
1. THIS ITEM HAS BEEN SIGNED AND SEALED BY
RAM A. GOEL USING A DIGITAL SIGNATURE & DATE.
2. PRINTED COPIES OF THIS DOCUMENT ARE NOT
CONSIDERED SIGNED & SEALED. THIS SIGNATURE MUST
BE VERIFIED ON ANY ELECTRONIC COPIES.

THE FOLLOWING IS COMPLIANT TO THE FLORIDA
BUILDING CODE 2020, 7TH EDITION AND ASCE 7-16 FOR
WIND LOADS OF 180 MPH

Digitally signed by Ram Goel
DN: E=Soneyfmllc@yahoo.com,
OU=Ram Goel,
OU=ENGINEERING,
O=Soney FM LLC,
L=Tampa, St=Florida, C=US
Date: 2021.09.29
10:46:31-0400'

THIS DRAWING IS AN INSTRUMENT OF SERVICE AND SHALL REMAIN THE PROPERTY OF THE
ENGINEER, AND SHALL NOT BE REPRODUCED, PUBLISHED OR USED IN ANY WAY WITHOUT
THE WRITTEN CONSENT OF THE ENGINEER. COPYRIGHT 2021 NOT PUBLISHED
THIS IS TO CERTIFY THAT I HAVE REVIEWED THIS PLAN AND FOUND TO BE IN COMPLIANCE
WITH CHAPTER 16 OF 2020 7TH EDITION FLORIDA BUILDING CODE AND APPLICABLE SUPPLEMENTS.

RAM A. GOEL, P.E. # 47431

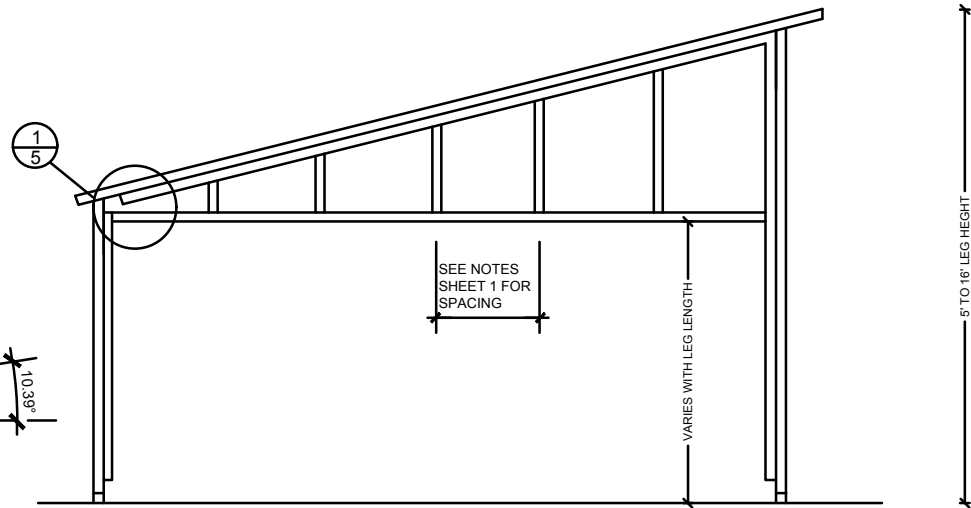
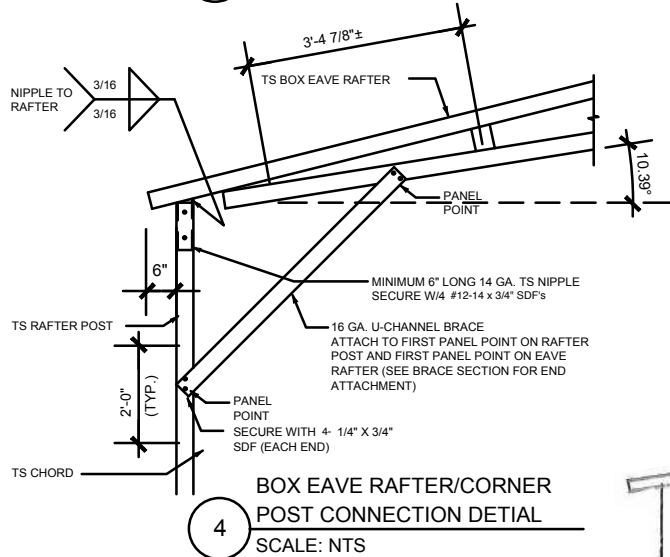
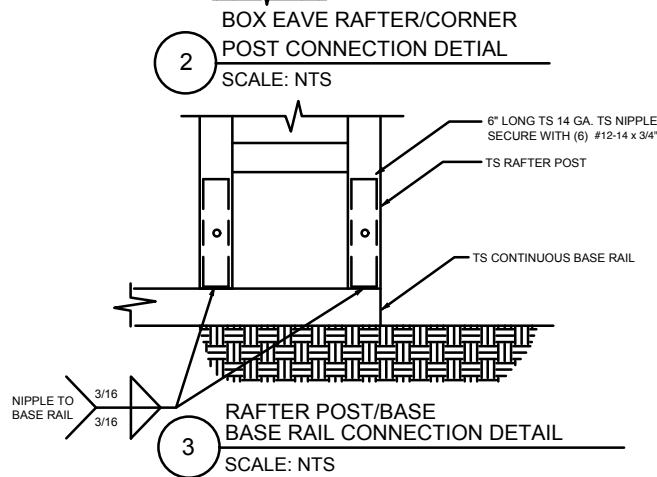
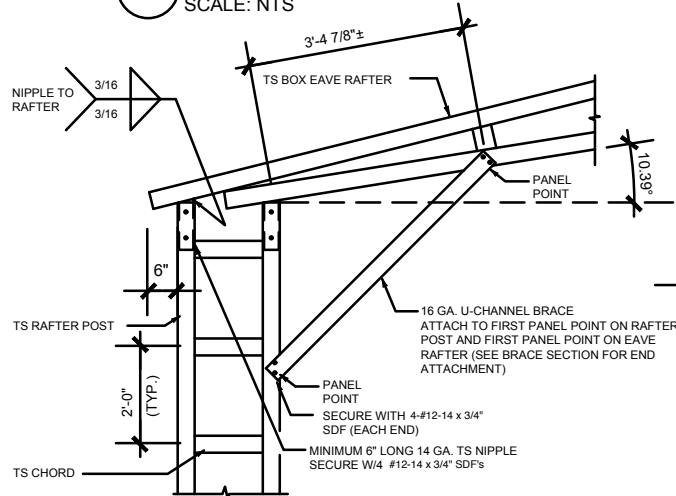
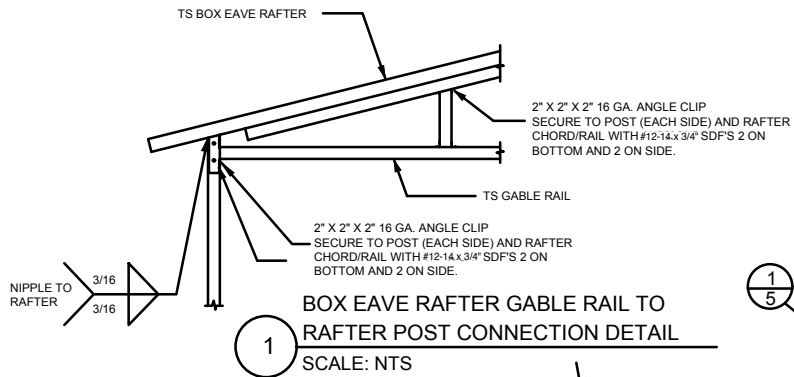
COPIES OF THESE PLANS ARE NOT VALID UNLESS
EMBOSSED WITH THE SIGNING ENGINEER'S SEAL

a c f c h e h f 8 f x n p m l a p n f x
(h n k f n n s 3 f)
f y x (e m -
- f c n h o x m f (x v f y h n - x y x c
3 7 S I T - c f - c x x o : n a p w x m
h e m p n s s c n k
m 0 K I K H I 7 H K T C
(0 0 3 S E T K I H I N C F

Job # 2173
Drawn By: S.K.
Checked By: R.G.

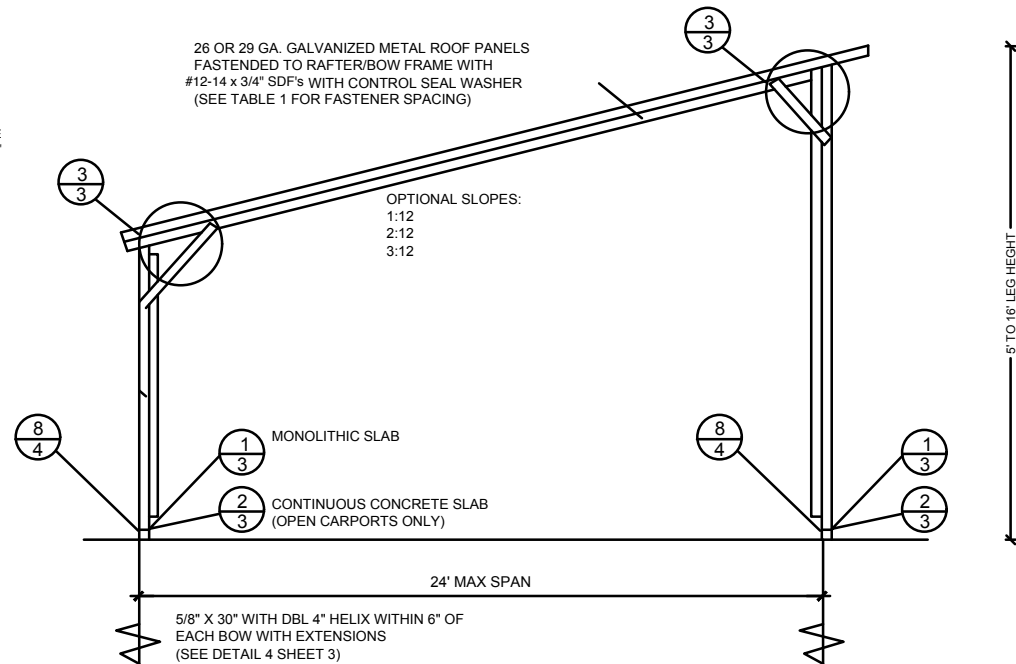
Issue Date: 08-18-21		
Revisions:		
No.	Date	Description
1	11	
2	11	
3	11	
4	11	

PREFABRICATED UTILITY STRUCTURE
ELITE METAL MANUFACTURING, LLC
10121 88TH TRACE
LIVE OAK, FL 32060



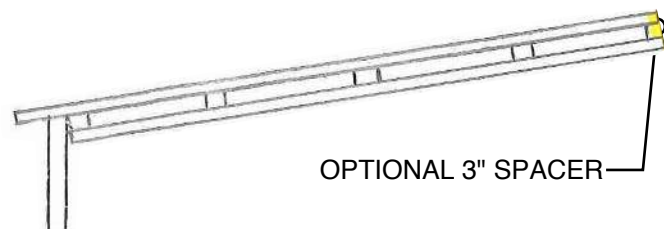
TYPICAL BOX EAVE RAFTER
GABLE END FRAMING SECTION

NOT TO SCALE

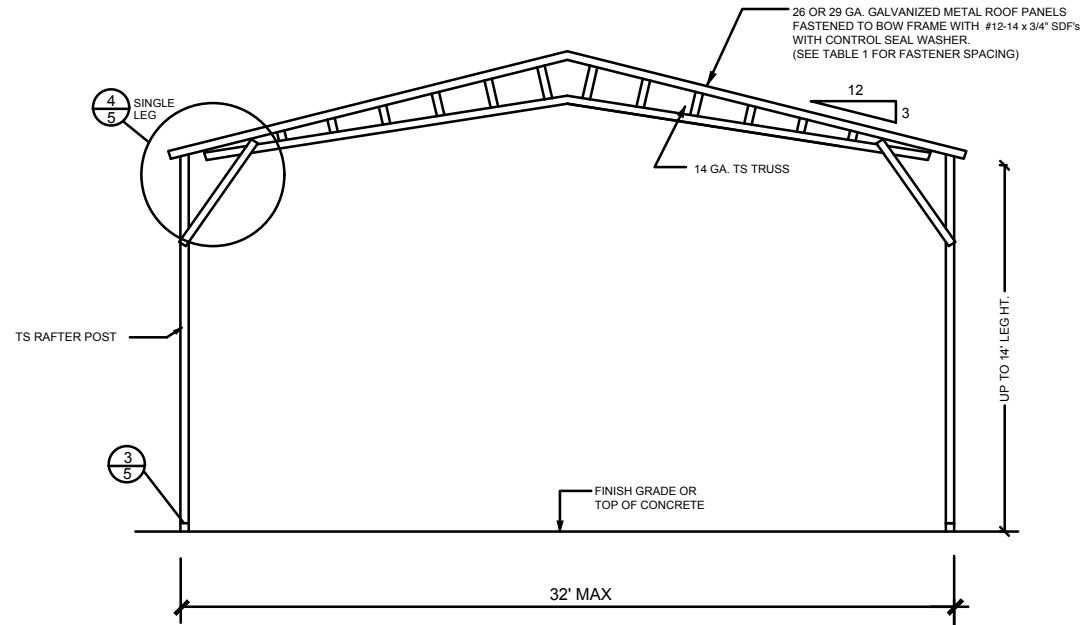


TYPICAL FREE STANDING LEAN-TO

NOT TO SCALE

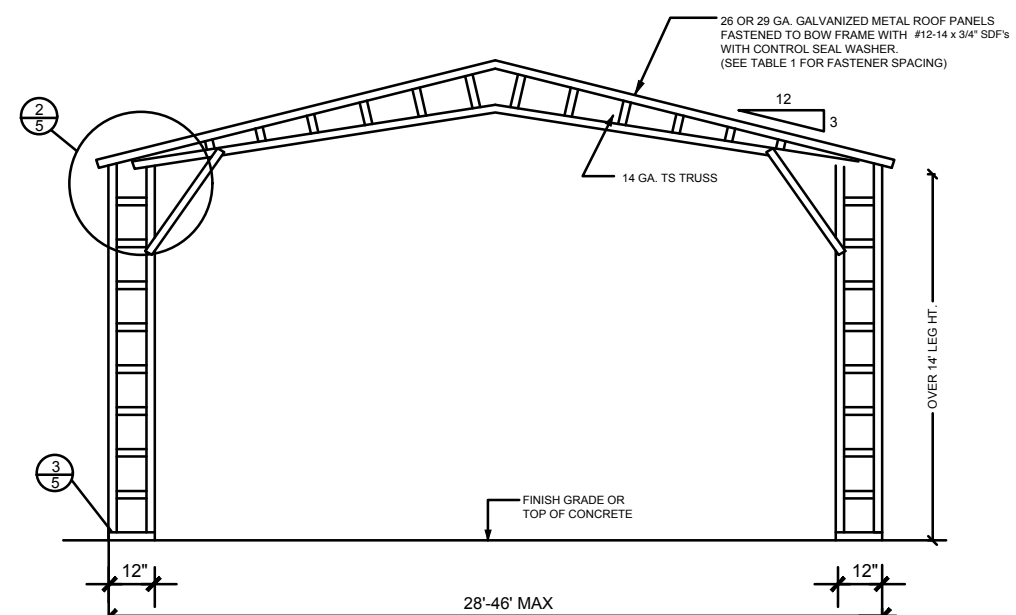


OPTIONAL 3" SPACER



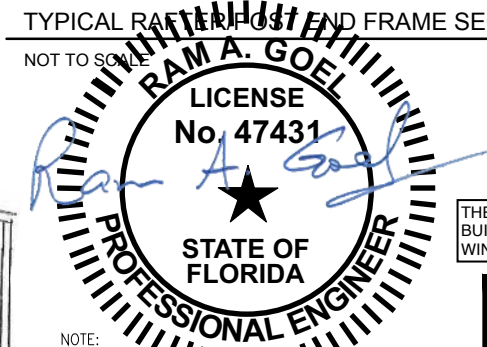
TYPICAL RAFTER/POST END FRAME SECTION

NOT TO SCALE



TYPICAL RAFTER/POST END FRAME SECTION

NOT TO SCALE



NOTE:
1. THIS ITEM HAS BEEN REVIEWED AND SEALED BY
RAM A. GOEL USING A DIGITAL SIGNATURE & DATE.
2. PRINTED COPIES OF THIS DOCUMENT ARE NOT
CONSIDERED SIGNED & SEALED. THIS SIGNATURE MUST
BE VERIFIED ON ANY ELECTRONIC COPIES.

Ram Goel

Digitally signed by Ram Goel
DN:
E=SoneyFM LLC@yahoo.com,
O=SoneyFM LLC,
OU=ENGINEERING,
C=US
Date: 2021.09.29
10:49:45-04'00'

THE FOLLOWING IS COMPLIANT TO THE FLORIDA
BUILDING CODE 2020, 7TH EDITION AND ASCE 7-16 FOR
WIND LOADS OF 180 MPH

RAM A. GOEL, P.E. # 47431

COPIES OF THESE PLANS ARE NOT VALID UNLESS
EMBOSSED WITH THE SIGNING ENGINEER'S SEAL



a c f c h e h f 8 f x n p m l a p m k
(E R F E N S 3 F)
f y x (e m -
- f c n h o x m f (x v f y h n - x y x c
3 7 S I T - c f - c x x o : n a p w x m
h e n h p n S S C K
m O K I K K U 7 F A K T C
(0 0 3 E T K U H I N C) F

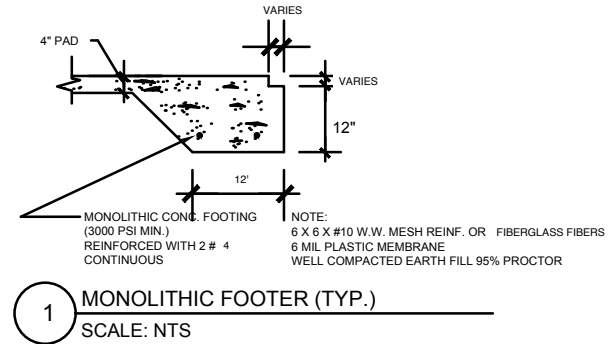
Job # 2173
Drawn By: S.K.
Checked By: R.G.

Issue Date: 08-18-21		
Revisions:		
No.	Date	Description
1		
2		
3		
4		

PREFABRICATED UTILITY STRUCTURE

ELITE METAL MANUFACTURING, LLC
10121 88TH TRACE
LIVE OAK, FL 32060

5



4" CONC. SLAB
6 X 6 #10 W.W. MESH REINF. -
FIBERMESH OPTIONAL
6 MIL PLASTIC MEMBRANE
WELL COMPACTED EARTH FILL 95% PROCTOR
TREAT SOIL FOR TERMITES

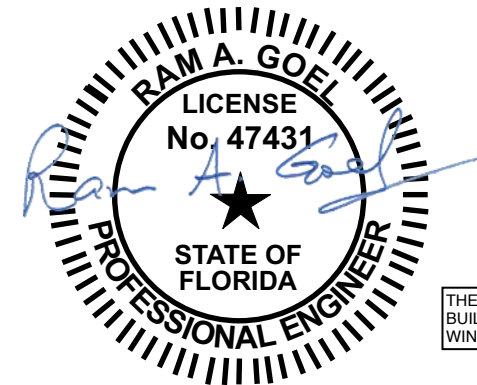
CONCRETE:
CONCRETE SHALL HAVE A MINIMUM COMPRESSIVE STRENGTH OF 3000 PSI AT 28 DAYS.
COVER OVER REINFORCING STEEL
FOR FOUNDATIONS, MINIMUM CONCRETE COVER OVER REINFORCING BARS SHALL BE:
3 INCHES IN FOUNDATIONS WHERE THE CONCRETE IS CAST AGAINST AND
PREMANENTLY IN CONTACT WITH EARCH OR EXPOSED TO THE EARTH OR WEATHER
AND 1 1/2" ELSEWHERE. REINFORCING BARS EMBEDDED IN GROUTED CELLS SHALL HAVE
A MINIMUM CLEAR DISTANCE OF 1/4" FOR FINE GROUT OR 1/2" FOR COURSE GROUT
BETWEEN REINFORCING BARS AND ANY FACE OF A CELL. REINFORCING BARS USED IN
MASONRY WALLS SHALL HAVE A MASONRY COVER (INCLUDING GROUT) OF NOT LESS THAN
2" FOR MASONRY UNITS WITH FACE EXPOSED TO EARTH OR WEATHER 1 1/2" FOR MASONRY
UNITS NOT EXPOSED TO EARCH OR WEATHER.

REINFORCING STEEL:
THE REINFORCING STEEL SHALL BE MINIMUM GRADE 40.

GALVANIZATION:
METAL ACCESSORIES FOR USE IN EXTERIOR WALL CONSTRUCTION NOT DIRECTLY EXPOSED TO
THE WEATHER SHALL BE GALVANIZED IN ACCORDANCE WITH ASTM A 153, CLASS B-2. METAL
PLATE CONNECTORS, SCREWS, BOLTS AND NAILS EXPOSED DIRECTLY TO THE WEATHER SHALL BE
IN STAINLESS STEEL OR HOT DIPPED GALVANIZED.

REINFORCEMENT MAY BE BENT IN THE SHOP OR THE FIELD PROVIDED:
1. ALL REINFORCEMENT IS BENT COLD
2. THE DIAMETER OF THE BEND, MEASURED ON THE INSIDE OF THE BAR, IS NOT LESS THAN 6-BAR
DIAMETERS AND
3. REINFORCEMENT PARTIALLY EMBEDDED IN CONCRETE SHALL NOT BE FIELD BENT.

EXCEPTION: WHERE BENDING IS NECESSARY TO ALIGN BARS WITH A VERTICAL CELL, BARS PARTIAL
EMBEDDED IN CONCRETE SHALL BE PERMITTED TO BE BENT AT A SLOPE NOT MORE THAN 1" OF
THE HORIZONTAL DISPLACEMENT TO 6" OF VERTICAL BAR LENGTH.



Digitally signed by Ram Goel
DN:
E=Sonyfmlic@yahoo.com,
OU=Ram Goel,
OU=ENGINEERING,
O=Sony FM LLC,
L=Tampa, S=Florida, C=US
Date: 2021.08.29
10:50:08-0400

THE FOLLOWING IS COMPLIANT TO THE FLORIDA
BUILDING CODE 2020, 7TH EDITION AND ASCE 7-16 FOR
WIND LOADS OF 180 MPH

NOTE:
1. THIS ITEM HAS BEEN SIGNED AND SEALED BY
RAM A. GOEL USING A DIGITAL SIGNATURE & DATE.
2. PRINTED COPIES OF THIS DOCUMENT ARE NOT
CONSIDERED SIGNED & SEALED. THIS SIGNATURE MUST
BE VERIFIED ON ANY ELECTRONIC COPIES.

THIS DRAWING IS AN INSTRUMENT OF SERVICE AND SHALL REMAIN THE PROPERTY OF THE
ENGINEER, AND SHALL NOT BE REPRODUCED, PUBLISHED OR USED IN ANY WAY WITHOUT
THE WRITTEN CONSENT OF THE ENGINEER. COPYRIGHT 2021. NOT PUBLISHED
THIS IS TO CERTIFY THAT I HAVE REVIEWED THIS PLAN AND FOUND TO BE IN COMPLIANCE
WITH CHAPTER 16 OF 2020 7TH EDITION FLORIDA BUILDING CODE AND APPLICABLE SUPPLEMENTS.

RAM A. GOEL, P.E. # 47431
COPIES OF THESE PLANS ARE NOT VALID UNLESS
EMBOSSSED WITH THE SIGNING ENGINEER'S SEAL

acFche hF8f xnPm Ra PnK
(mKFNKNS3F
f y x (e m
- f c n h o x m f (x w y h n - x y x c
3751T - c f - c x x o : n a p w x m
h e m P n S S C N K
m O K I K R I Z H K T C
(00 35 E T K I H I N C
F

Job # 2173
Drawn By: S.K.
Checked By: R.G.

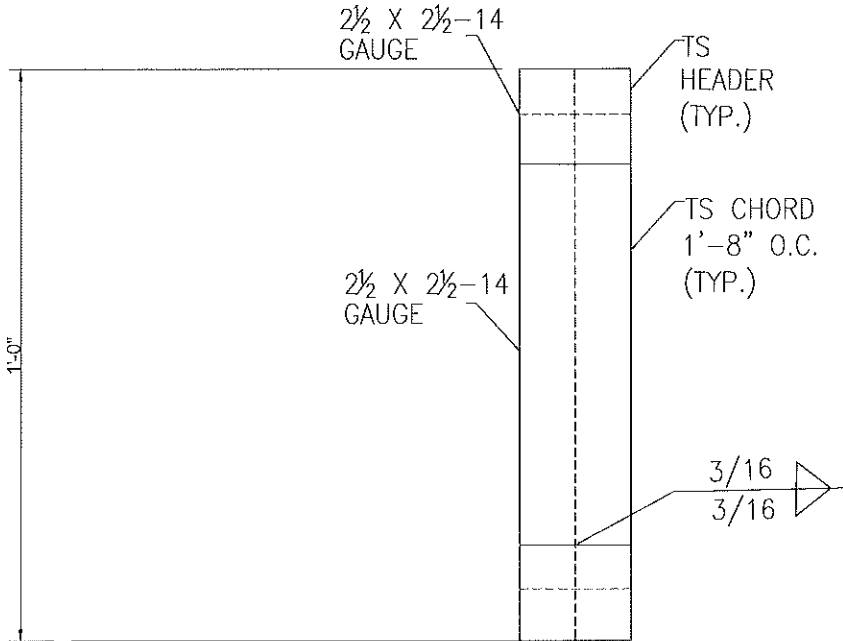
Issue Date: 08-18-21		
Revisions:		
No.	Date	Description
1	11	
2	11	
3	11	
4	11	

CONCRETE

ELITE METAL MANUFACTURING, LLC
10121 88TH TRACE
LIVE OAK, FL 32060

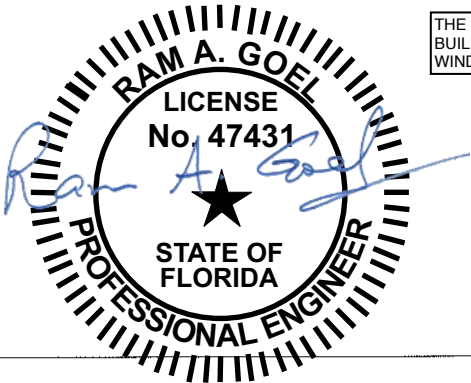
6

OPTIONAL HEADER



HEADER DETAIL FOR DOOR
OPENINGS 12'-0" < LENGTH < 20'-0"
SCALE: N.T.S.

Digitally signed by Ram Goel
DN:
E=Soneyfmllc@yahoo.com,
CN=Ram Goel,
OU=ENGINEERING,
O=Soney FM LLC,
L=Tampa, S=Florida, C=US
Date: 2021.09.29
10:50:26-04'00'



THE FOLLOWING IS COMPLIANT TO THE FLORIDA
BUILDING CODE 2020, 7TH EDITION AND ASCE 7-16 FOR
WIND LOADS OF 180 MPH

- NOTE:
1. THIS ITEM HAS BEEN SIGNED AND SEALED BY
RAM A. GOEL USING A DIGITAL SIGNATURE & DATE.
 2. PRINTED COPIES OF THIS DOCUMENT ARE NOT
CONSIDERED SIGNED & SEALED. THIS SIGNATURE MUST
BE VERIFIED ON ANY ELECTRONIC COPIES.

THIS DRAWING IS AN INSTRUMENT OF SERVICE AND SHALL REMAIN THE PROPERTY OF THE
ENGINEER, AND SHALL NOT BE REPRODUCED, PUBLISHED OR USED IN ANY WAY WITHOUT
THE WRITTEN CONSENT OF THE ENGINEER. COPYRIGHT 2021. NOT PUBLISHED.
THIS IS TO CERTIFY THAT I HAVE REVIEWED THIS PLAN AND FOUND IT TO BE IN COMPLIANCE
WITH CHAPTER 16 OF 2020 7TH EDITION FLORIDA BUILDING CODE AND APPLICABLE SUPPLEMENTS.

Dr. Ram A. Goel PE # 47431

COPIES OF THESE PLANS ARE NOT VALID UNLESS
EMBOSSED WITH THE SIGNING ENGINEER'S SEAL



acFche hF8f xnl'm la p'mk
(hmkNKS3F
f y x (e m:
-f c _nhox m f (x w y h n- xy xc
3ZSIT -cf - cxxo : n a p wx m
he m p (n SSCNK
m OKIKNI7HKTIC
(003SETKIH NC
F

Job # 2173
Drawn By: S.K.
Checked By: R.G.

Issue Date: 08-18-21

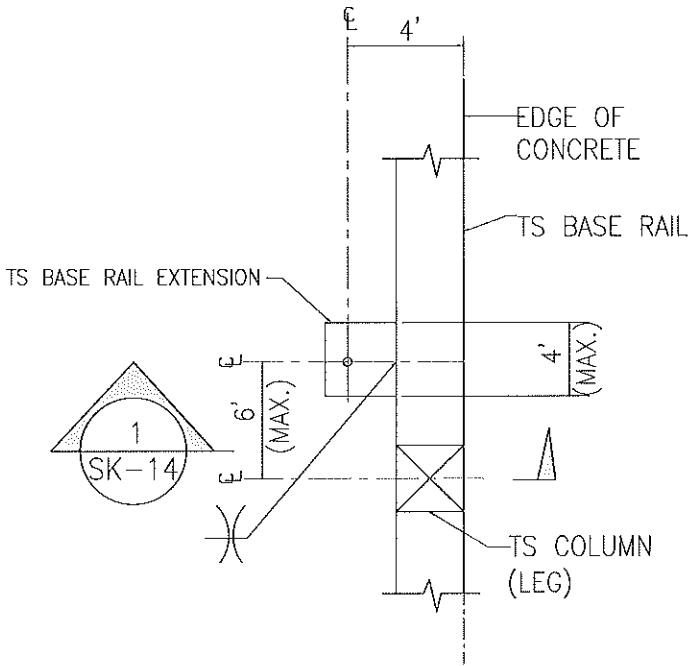
Revisions:

No.	Date	Description
Δ //		
Δ //		
Δ //		
Δ //		

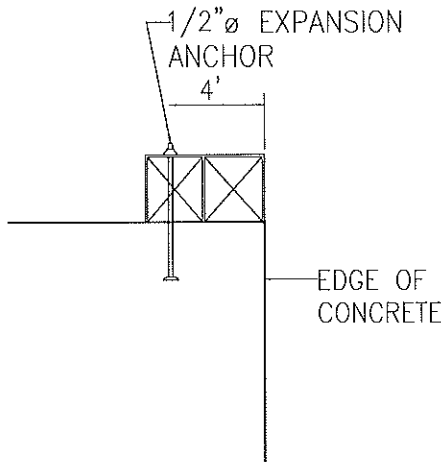
OPTIONAL HEADER

ELITE METAL MANUFACTURING, LLC
10121 88TH TRACE
LIVE OAK, FL 32060

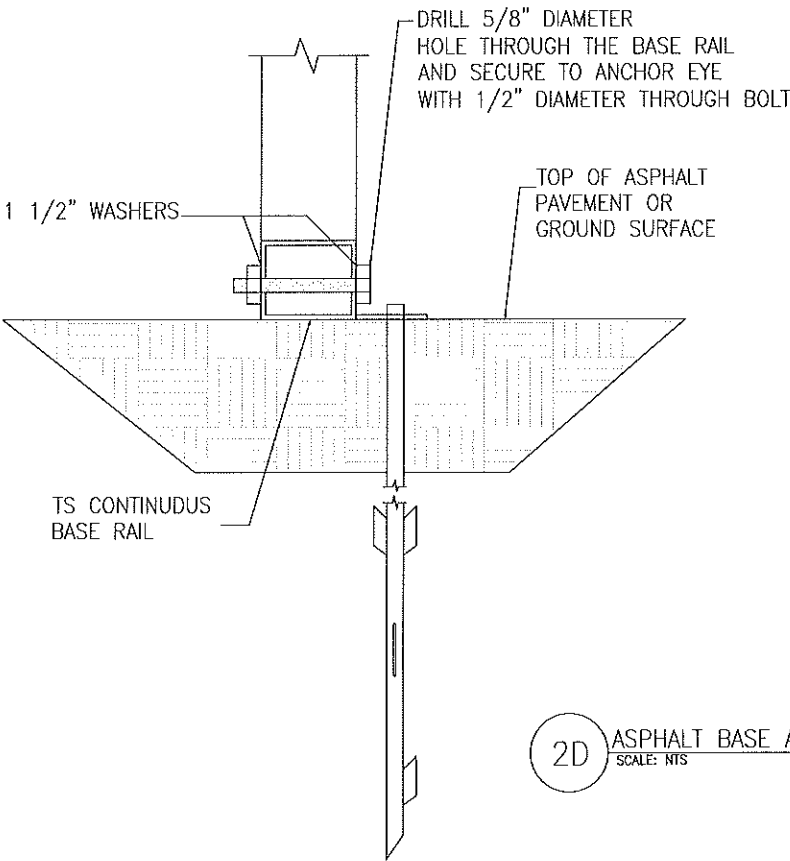
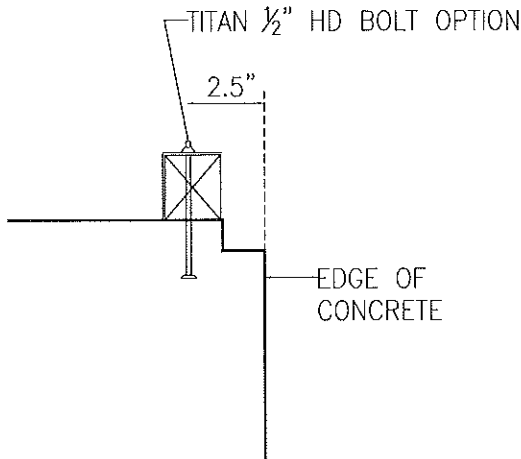
ADDITIONAL BASE RAIL ANCHORAGE OPTION



TYPICAL ANCHOR DETAIL WHEN
BASE RAIL IS NEAR EDGE OF CONCRETE
SCALE: N.T.S.

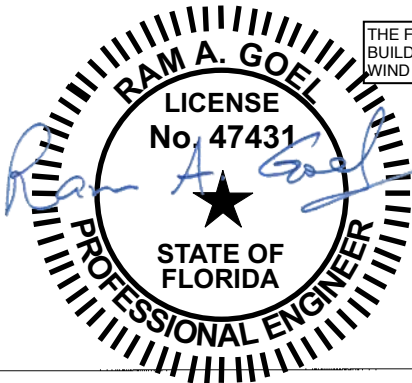


SECTION 1
SCALE: N.T.S. SK-14



2D ASPHALT BASE ANCHORAGE
SCALE: N.T.S.

Ram Goel
Digitally signed by Ram Goel
DN:
E=Soneyfmlc@yahoo.com,
CN=Ram Goel,
OU=ENGINEERING,
O=Soney FM LLC, L=Tampa,
S=Florida, C=US
Date: 2021.09.29
10:50:42-04'00'



THE FOLLOWING IS COMPLIANT TO THE FLORIDA
BUILDING CODE 2020, 7TH EDITION AND ASCE 7-16 FOR
WIND LOADS OF 180 MPH

NOTE:
1. THIS ITEM HAS BEEN SIGNED AND SEALED BY
RAM A. GOEL USING A DIGITAL SIGNATURE & DATE.
2. PRINTED COPIES OF THIS DOCUMENT ARE NOT
CONSIDERED SIGNED & SEALED. THIS SIGNATURE MUST
BE VERIFIED ON ANY ELECTRONIC COPIES.

THIS DRAWING IS AN INSTRUMENT OF SERVICE AND SHALL REMAIN THE PROPERTY OF THE
ENGINEER. AND SHALL NOT BE REPRODUCED, PUBLISHED OR USED IN ANY WAY WITHOUT
THE WRITTEN CONSENT OF THE ENGINEER. COPYRIGHT 2021. NOT PUBLISHED
THIS IS TO CERTIFY THAT I HAVE REVIEWED THIS PLAN AND FOUND IT TO BE IN COMPLIANCE
WITH CHAPTER 16 OF 2020 7TH EDITION FLORIDA BUILDING CODE AND APPLICABLE SUPPLEMENTS.
Dr. Ram A. Goel PE # 47431
COPIES OF THESE PLANS ARE NOT VALID UNLESS
EMBOSSED WITH THE SIGNING ENGINEER'S SEAL.



a cFche hF8f xnlPm la PnK
(hF8fNKS3F
f yx (e m-
-f c nhoxmf (x w yhn- xy xc
37SIT- cf - cxxo : n aP wx m
he nhP n SSCNK
m OKLKM7RKTG
(003SETKHLNC
F

Job # 2173
Drawn By: S.K.
Checked By: R.G.

Issue Date: 08-18-21		
Revisions:		
No.	Date	Description
1		
2		
3		
4		

ADDITIONAL BASE RAIL ANCHORAGE OPTION
ELITE METAL MANUFACTURING, LLC
10121 88TH TRACE
LIVE OAK, FL 32060

8