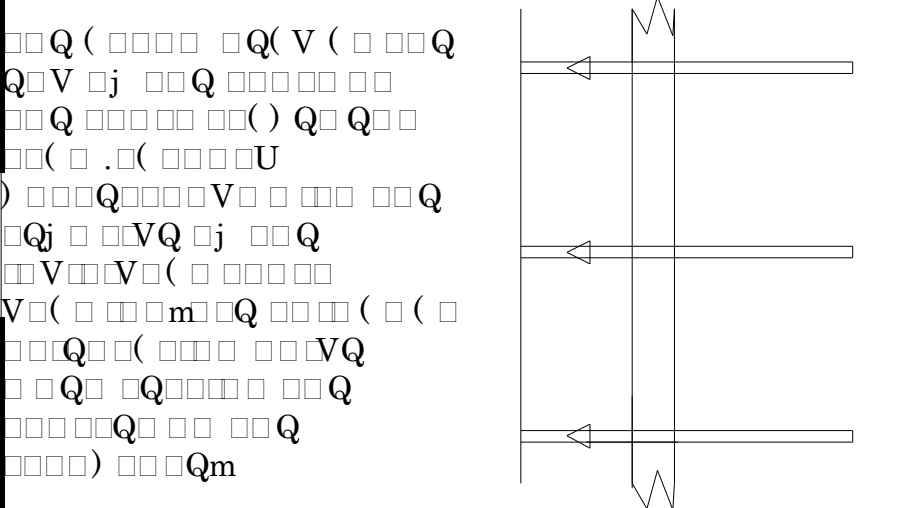
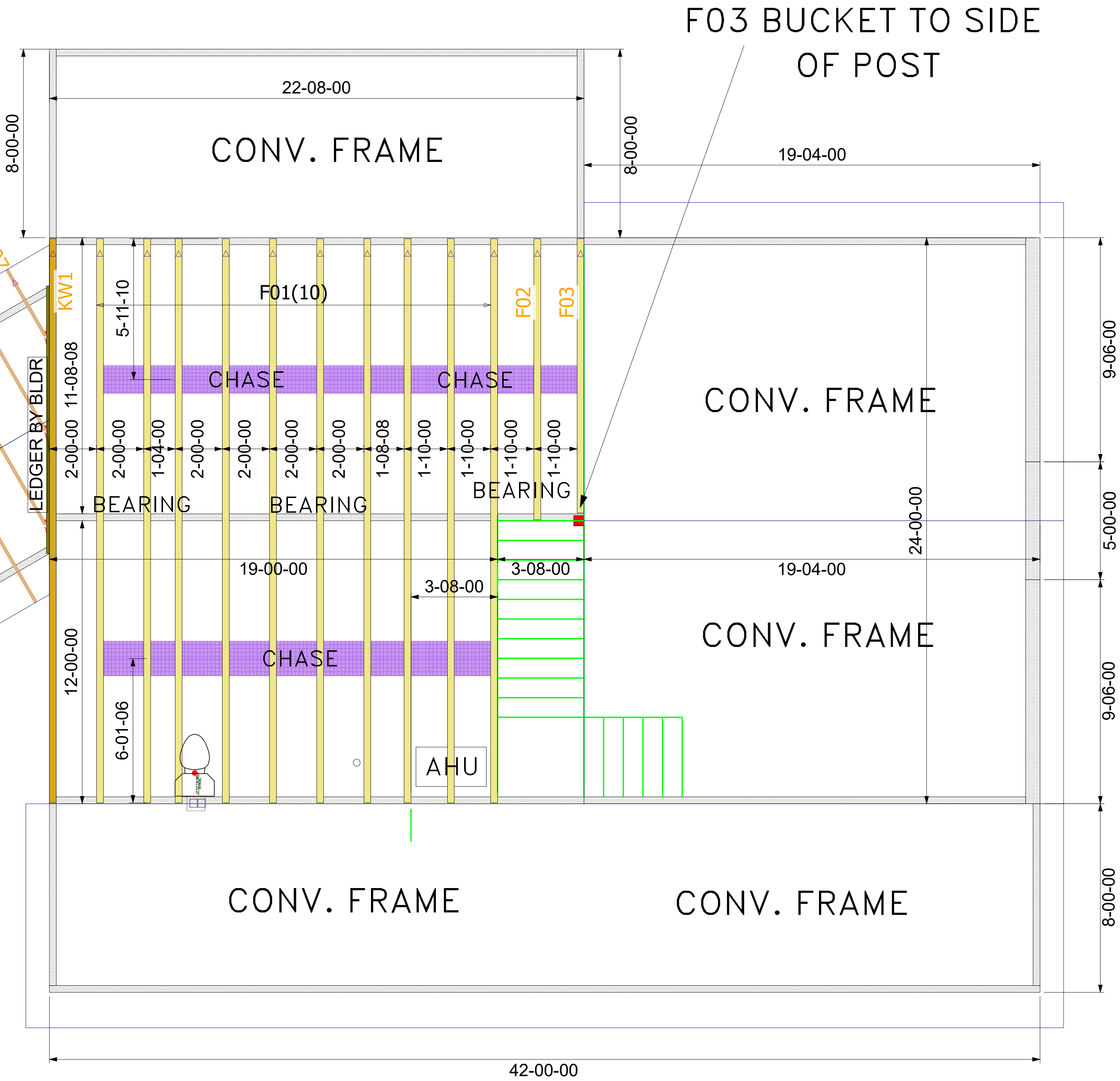
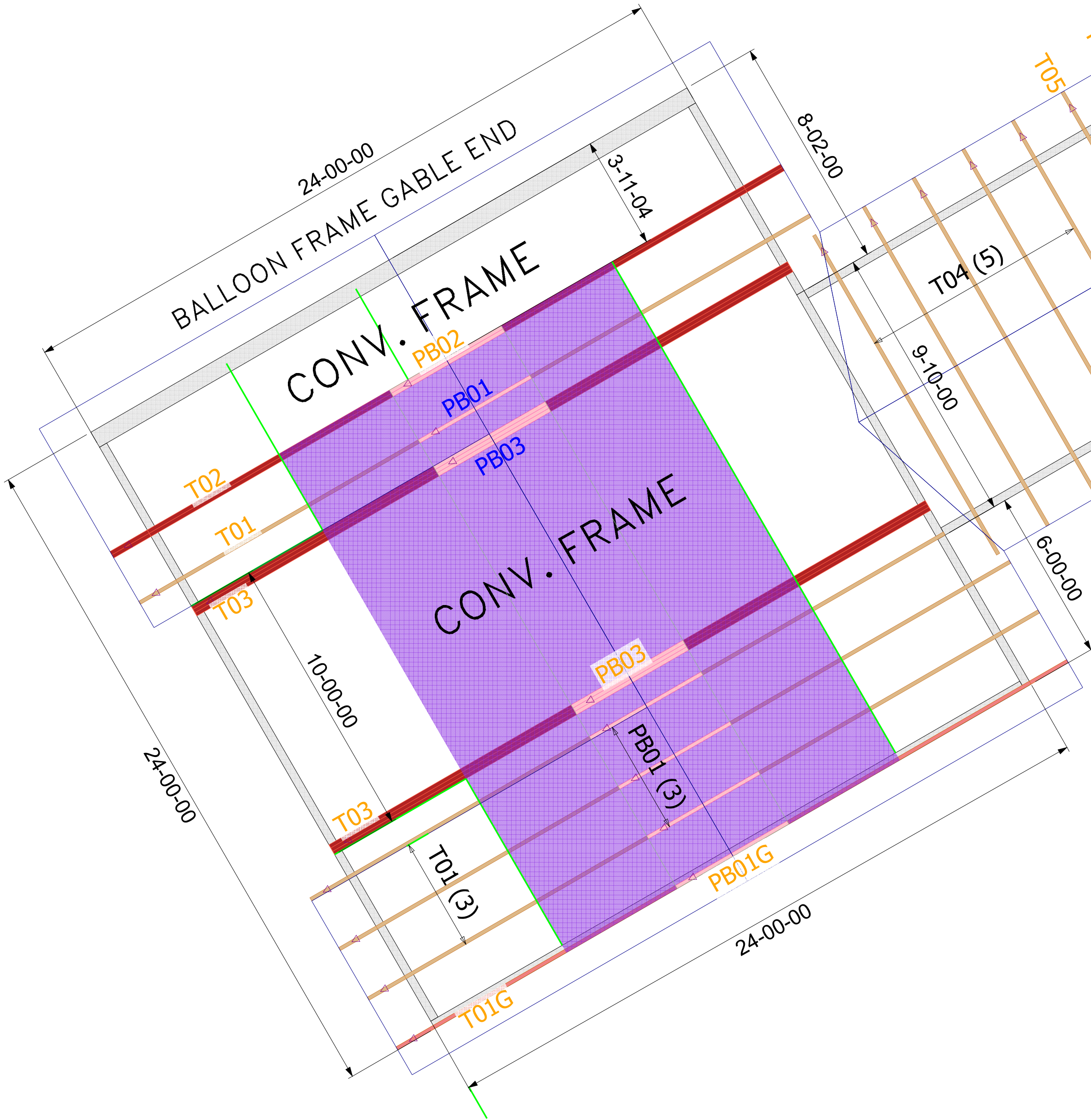


12/12 PITCH GARAGE
4/12 PITCH LAUNDRY

16” DEEP FLOOR TRUSSES
DO NOT SET BACKWARDS



Notes:

1. All dimensions are in feet and inches.

2. All materials shall be as specified in the schedule.

3. All connections shall be as specified in the schedule.

4. All work shall be in accordance with the applicable building codes.

Notes:

1. All dimensions are in feet and inches.

2. All materials shall be as specified in the schedule.

3. All connections shall be as specified in the schedule.

4. All work shall be in accordance with the applicable building codes.



Lake City
j (EFKL0##0KHJ
j (EFKL0##0IBF

Jacksonville
j (EFKL0##0KHJ
j (EFKL0##0IBF

Tallahassee
j (EFKL0##0KHJ
j (EFKL0##0IBF

Y (Q) m		
m		
)		
k080F		FJxKF8x
d	d	FJxKF8x

Job	Truss	Truss Type	Qty	Ply	BLAKE - PRICE RES.
3418371	F02	Floor	1	1	

Builders FirstSource, Lake City, FL 32055, Kim Holloway

8.530 s Jan 6 2022 MiTek Industries, Inc. Mon Feb 27 14:55:27 2023 Page 1

ID:hrk?DrraHa8liZDfPLSKNDyFfsK-PO29C4y7SfQpf82tlvvpeq5c57M3iFgJcw5Lfzgw7E

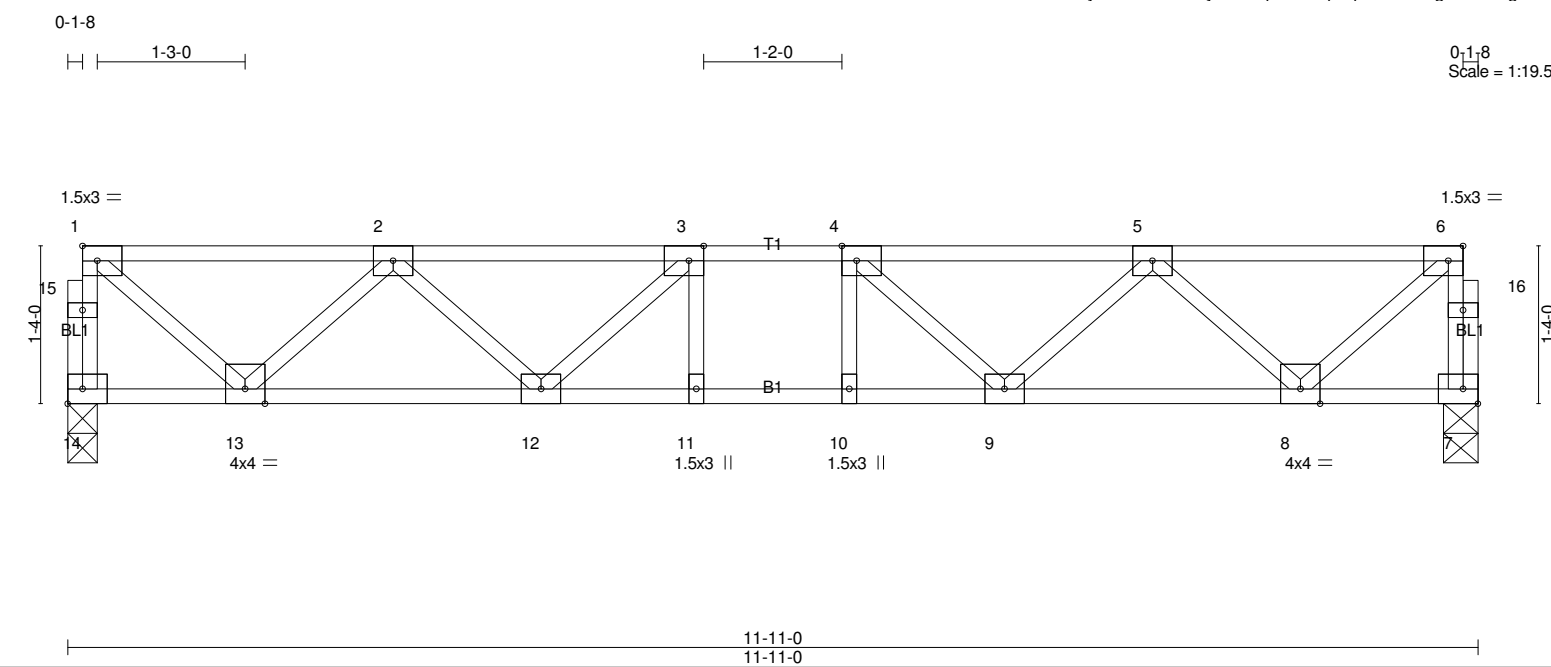


Plate Offsets (X,Y)-- [3:0-1-8,Edge], [4:0-1-8,Edge], [6:0-1-8,Edge]

LOADING (psf)	SPACING-	CSI.	DEFL.	in (loc)	l/defl	L/d	PLATES	GRIP
TCLL 40.0	2-0-0	TC 0.41	Vert(LL)	-0.05 11-12	>999	360	MT20	244/190
TCDL 10.0	Plate Grip DOL 1.00	BC 0.57	Vert(CT)	-0.07 11-12	>999	240		
BCLL 0.0	Lumber DOL 1.00	WB 0.37	Horz(CT)	0.02 7	n/a	n/a		
BCDL 5.0	Rep Stress Incr YES	Matrix-S					Weight: 64 lb	FT = 20%F, 11%E
	Code FBC2020/TPI2014							

LUMBER-	BRACING-
TOP CHORD 2x4 SP No.2(flat)	TOP CHORD Structural wood sheathing directly applied or 6-0-0 oc purlins, except end verticals.
BOT CHORD 2x4 SP No.2(flat)	BOT CHORD Rigid ceiling directly applied or 10-0-0 oc bracing.
WEBS 2x4 SP No.3(flat)	

REACTIONS. (lb/size) 14=635/0-3-0, 7=635/0-3-8

FORCES. (lb) - Max. Comp./Max. Ten. - All forces 250 (lb) or less except when shown.

TOP CHORD 14-15=-631/0, 1-15=-630/0, 7-16=-631/0, 6-16=-630/0, 1-2=-608/0, 2-3=-1348/0, 3-4=-1550/0, 4-5=-1348/0, 5-6=-608/0

BOT CHORD 12-13=0/1134, 11-12=0/1550, 10-11=0/1550, 9-10=0/1550, 8-9=0/1134

WEBS 6-8=0/782, 1-13=0/782, 5-8=-731/0, 2-13=-731/0, 5-9=0/317, 2-12=0/317, 4-9=-359/0, 3-12=-359/0

NOTES-

1) Unbalanced floor live loads have been considered for this design.

2) All plates are 3x4 MT20 unless otherwise indicated.

3) Recommend 2x6 strongbacks, on edge, spaced at 10-0-0 oc and fastened to each truss with 3-10d (0.131" X 3") nails. Strongbacks to be attached to walls at their outer ends or restrained by other means.

LOAD CASE(S) Standard

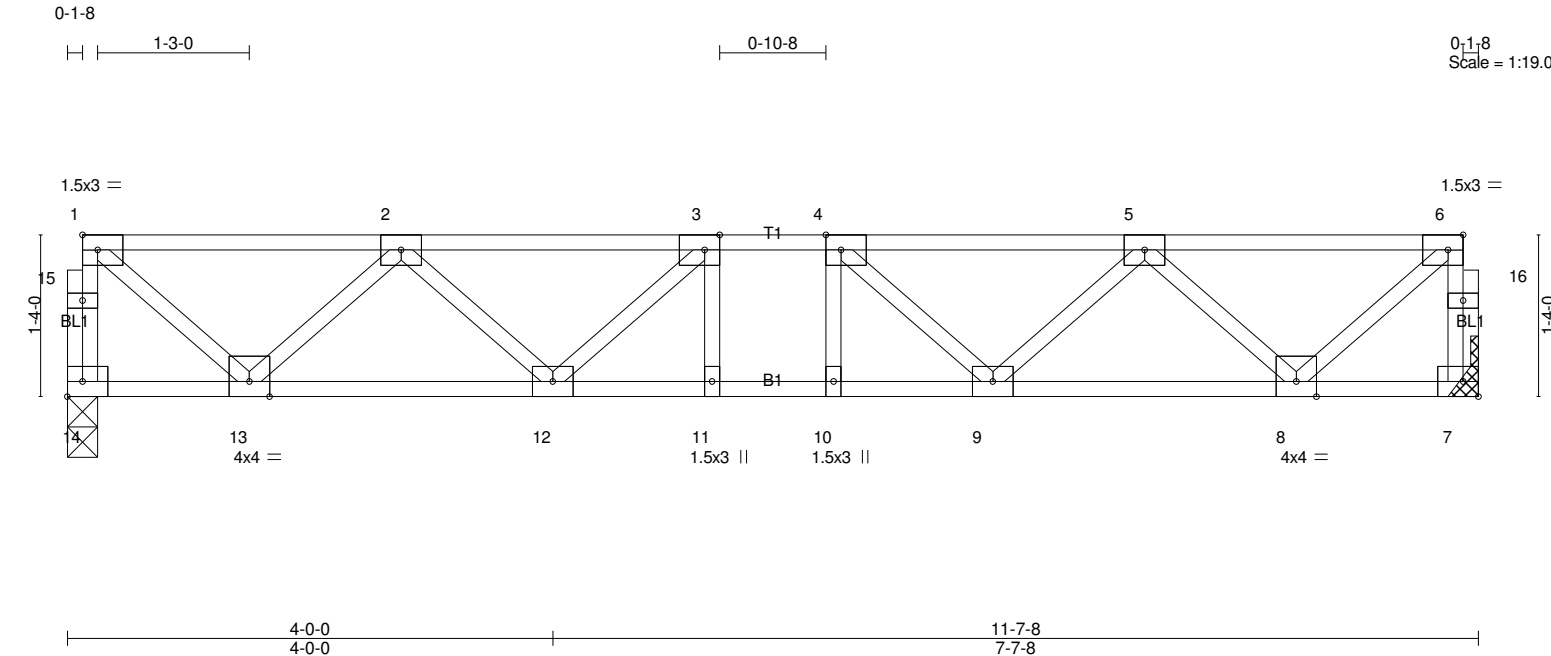


Plate Offsets (X,Y)-- [3:0-1-8,Edge], [4:0-1-8,Edge], [6:0-1-8,Edge]

LOADING (psf)	SPACING-		CSI.		DEFL.	in	(loc)	l/defl	L/d	PLATES	GRIP
TCLL 40.0	Plate Grip DOL 1.00	2-0-0	TC 0.40		Vert(LL)	-0.05	11	>999	360	MT20	244/190
TCDL 10.0	Lumber DOL 1.00		BC 0.51		Vert(CT)	-0.06	11	>999	240		
BCLL 0.0	Rep Stress Incr YES		WB 0.36		Horz(CT)	0.02	7	n/a	n/a		
BCDL 5.0	Code FBC2020/TPI2014		Matrix-S							Weight: 63 lb	FT = 20%F, 11%E

LUMBER-	BRACING-
TOP CHORD 2x4 SP No.2(flat)	TOP CHORD Structural wood sheathing directly applied or 6-0-0 oc purlins, except end verticals.
BOT CHORD 2x4 SP No.2(flat)	BOT CHORD Rigid ceiling directly applied or 10-0-0 oc bracing.
WEBS 2x4 SP No.3(flat)	

REACTIONS. (lb/size) 14=619/0-3-0, 7=619/Mechanical

FORCES. (lb) - Max. Comp./Max. Ten. - All forces 250 (lb) or less except when shown.

TOP CHORD 14-15=-615/0, 1-15=-614/0, 7-16=-615/0, 6-16=-614/0, 1-2=-590/0, 2-3=-1297/0, 3-4=-1481/0, 4-5=-1297/0, 5-6=-590/0

BOT CHORD 12-13=0/1099, 11-12=0/1481, 10-11=0/1481, 9-10=0/1481, 8-9=0/1099

WEBS 6-8=0/758, 1-13=0/758, 5-8=-708/0, 2-13=-708/0, 5-9=0/294, 2-12=0/294, 4-9=-325/0, 3-12=-325/0

NOTES-

1) Unbalanced floor live loads have been considered for this design.

2) All plates are 3x4 MT20 unless otherwise indicated.

3) Refer to girder(s) for truss to truss connections.

4) Recommend 2x6 strongbacks, on edge, spaced at 10-0-0 oc and fastened to each truss with 3-10d (0.131" X 3") nails. Strongbacks to be attached to walls at their outer ends or restrained by other means.

LOAD CASE(S) Standard