



SUPERFLO® VST

69

# SUPERFLO® VST

VARIABLE SPEED PUMP

Dependable performance that  
never takes a day off.



PENTAIR.COM



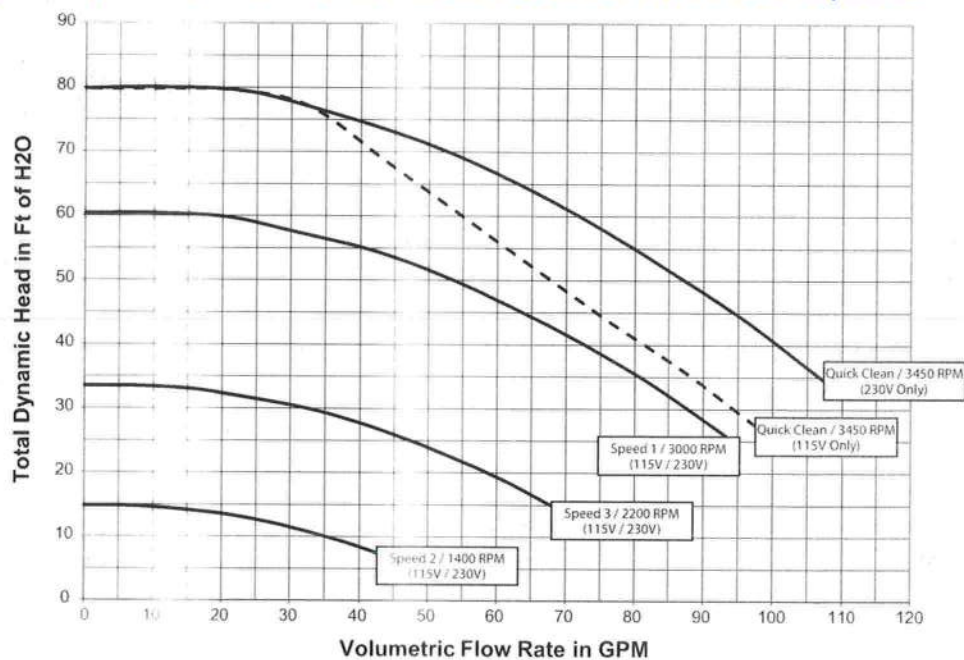
TRADEGRADE

# SUPERFLO® VST

VARIABLE SPEED PUMP



## SuperFlo® VST Performance Curves for Preset Speeds



1620 Hawkins Ave | Sanford, NC 27330 | United States | 800.831.7133 | [pentair.com](http://pentair.com)

All Pentair trademarks and logos are owned by Pentair plc. SuperFlo® and Eco Select® are trademarks of Pentair Water Pool and Spa, Inc. Hayward® and Super Pump® are registered trademarks of Hayward Industries, Inc. Pentair reserves the right to change specifications without prior notice.

Pentair is an equal opportunity employer.

©2015-2019 Pentair Water Pool and Spa, Inc. All rights reserved.



The SuperFlo VST pump is a green choice for your pool.

Variable Speed Pump Eco Select is one of the most efficient pumps available.

### TRADEGRADE

The TradeGrade family of products is exclusively made for and sold by the world's most demanding pool professionals.



ENERGY STAR® Certified SuperFlo® VST variable speed pump from Pentair® meets strict energy-efficiency criteria set by the U.S. Environmental Protection Agency and the U.S. Department of Energy. This pump saves money, reduces energy use and protects the environment.





CLEAN & CLEAR®

# CLEAN & CLEAR®

## CARTRIDGE FILTER

Crystal clarity with cartridge convenience.

The Clean & Clear Filter combines top-end performance with low maintenance. This dependable design uses special filter elements to strip tiny particles as small as 20 microns from your pool water. (An average grain of beach sand is 1,000 microns!) Plus, cleaning is a breeze. Open the top, remove the cartridge, hose it off and the Clean & Clear Filter is ready to go again.

We've maximized cartridge surface consistency to block and trap the maximum amount of solids. We also use the most durable materials to extend cartridge life. The Clean & Clear Filter will keep your pool sparkling day in and day out.



PENTAIR.COM

TRADEGRADE



## CLEAN & CLEAR® CARTRIDGE FILTER

### Carefree by design.

Like all Pentair cartridge filters, the Clean & Clear Filter features an easily cleaned cartridge for the ultimate in carefree pool filtration. The fiberglass-reinforced tank halves are secured with a locking ring—just loosen the ring and remove the top half for easy cartridge access and rinsing. Filter maintenance doesn't get any easier.



## KEY FEATURES

### Single-piece base and tank

Constructed of fiberglass-reinforced polypropylene for strength, chemical resistance and maximum durability.

### High Flow™ Manual Air Relief Valve

Valve with continuous internal air relief works to maintain optimum filtration efficiency at all times.

### 1½" drain cap and washout

For quick and convenient maintenance and winterization.

### Innovative lock ring

Requires only an easy half of a revolution for a leak-proof seal.

### Easy to remove and rinse cartridge

### 2" plumbing

For maximum flow.

### Locking ring

Allows easy and quick access to cartridge and internal parts.

Model Number	Filter Area Sq. Ft.	Vertical Clearance*	Filter Diameter	Flow Rate GPM	Turnover Capacity (Gallons)		
					8 hrs.	10 hrs.	12 hrs.
CC 50	50	30"	15.5"	50	24,000	30,000	36,000
CC 75	75	39"	15.5"	75	36,000	45,000	54,000
CC 100	100	61"	15.5"	100	48,000	60,000	72,000
CC 150	150	76"	15.5"	150	72,000	90,000	108,000
CC 200	200	76"	15.5"	150	72,000	90,000	108,000

\*Required clearance to remove filter elements.



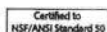
## TRADEGRADE

The TradeGrade family of products is exclusively made for and sold by the world's most demanding pool professionals.

1620 Hawkins Ave | Sanford, NC 27330 | United States | 800.831.7133 | [pentair.com](http://pentair.com)

All indicated Pentair trademarks and logos are property of Pentair Inc. or its affiliated companies in the U.S.A. and/or other countries. Third party registered and unregistered trademarks and logos are the property of their respective owners.

PM-1214/20 ©2020 Pentair. All Rights Reserved.

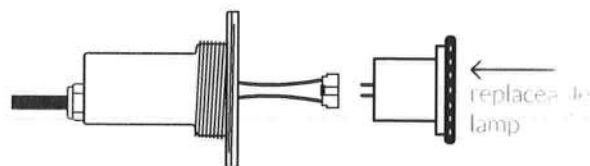
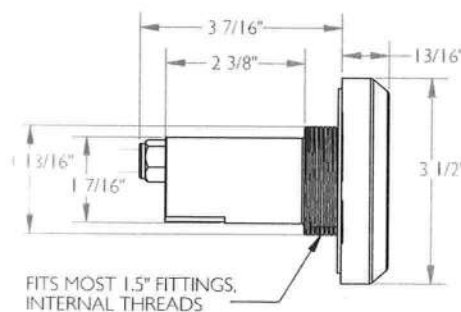
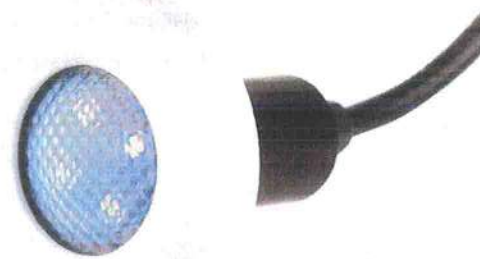




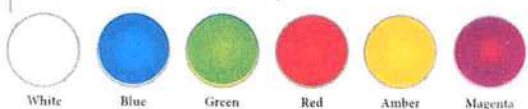
# TREO LED Light

The TREO LED light is a 12VAC, 5 Watt LED under water light for gunite, vinyl liner, and fiberglass pools with a replaceable LED lamp.

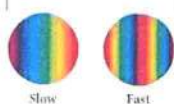
- Serviceable design - Replaceable LED lamp
- Designed for use with standard thread 1.5" diameter wall fittings
- Available in lengths of 30', 50', 80', 150'
- No earth bonding required
- White or color changing LED models available
- Color functions:
  - Advanced color functionality with poolLUX Premier: (49) color variations and dimming control (via wireless remote)
  - 12V controls: (6) colors (white, blue, green, red, amber, magenta) and (2) light shows
- Color memory function
- Five colored trim rings included to match the surface of your pool or spa
- 3 year warranty
- ETL Listed - Conforms to UL676, certified to CULAC22.2 #89



## Color Options



## Light Shows



## Ring Colors



Model No.	Description
FLED-C-TR-30	TREO 30' RGB LED pool light
FLED-C-TR-50	TREO 50' RGB LED pool light
FLED-C-TR	TREO 80' RGB LED pool light
FLED-C-TR-150	TREO 150' RGB LED pool light
FLED-W-TP-30	TREO 30' White LED pool light
FLED-W-TP-50	TREO 50' White LED pool light
FLED-W-TP	TREO 80' White LED pool light
FLED-W-TP-150	TREO 150' White LED pool light
FLED-VK-TR	TREO vinyl adapter kit
FLED-LAU-C	RGB Replacement Lamp
FLED-LAU-W	White Replacement Lamp
FLED-C-TR-4x8	8 TREO RGB LED pool lights with 80' cord
FLED-W-TP-4x8	8 TREO White LED pool lights with 80' cord



S.R.Smith, LLC P.O. Box 400, Canby, OR 97013  
P 503.266.2231 TF 800.824.4387 [srsmith.com](http://srsmith.com)

© 2016 S.R.Smith. All rights reserved.

**CERTIFICATION OF COMPLIANCE**

Contains: WG1048E, WG1048EBLK, WG1048EGR, or WG1048EDGR  
Description: 8" Round Suction Outlet Cover

Ratings: Floor: 125 GPM Wall: 72 GPM Open Area: 8.1 sq-in  
Certified to Comply with Section 1404 of the Virginia Graeme Baker Act (VGB) Pool & Spa Safety Act codified at 16 CFR part 1450. Initial Certification May 2011.

Manufactured: After September 10, 2009, by a Division of Hayward Industries, Inc. at K4-A, 214028 Block K4- A, Export Processing Zone Wuxi New District Jiangsu Province PRC 214028, China; or at One Hayward Industrial Drive, Clemmons, NC 27012.

Certified by Hayward Pool Products, 620 Division Street, Elizabeth, NJ 07207, Phone 908-355-7995  
Contact at [www.haywardnet.com](http://www.haywardnet.com)

Record Custodian is Customer Service at [www.haywardnet.com](http://www.haywardnet.com).

Hayward Pool Products P.O. Box 5100 Clemmons, NC 27012-5100, Phone: 336-712-9900  
<http://www.hayward-pool.com/pdf/literature/8inroundCOC.pdf>

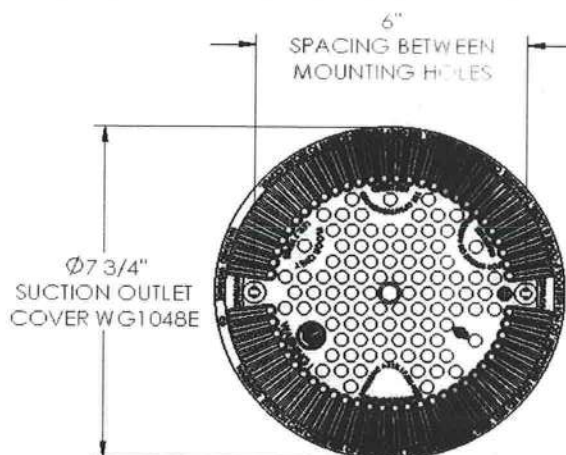
Date of Mfr: The Lot Number shown on the product label contains the Year & Month of manufacture. The first number represents the year (ex 1 = 2011) and the second character the month (A=Jan, B=Feb, H=Aug, I is skipped, J=Sep, etc)

Tested to: ANSI/APSP 16 (ANSI/ASME 112.19.8-2007 (addendum 9b-2009)) per Section 1404 of the Virginia Graeme Baker Act (VGB) Pool & Spa Safety Act. Tested by NSF International, 789 Dixboro Road, Ann Arbor, MI 48113, Phone 734-769-8010 in April 2011. Certificate at:  
<http://info.nsf.org/Certified/Pool/ Listings.asp?Company=21600&Standard=ASME1908>

Date of Installation: \_\_\_\_\_

Suction outlet components have a finite life, the cover/grate should be inspected frequently and replaced at least every 7 years or if found to be damaged, broken, cracked, missing, or not securely attached.

Hayward Pool Products acknowledges that it is a federal crime to knowingly and willingly make materially false, fictitious, or fraudulent statements, representations, or omissions on this certification.

**USED ON FOLLOWING SERIES:**

WG1030AVPAK2	SP1030AVPAK2
WG1048AVPAK2	SP1048AVPAK2
WG1049AVPAK2	SP1049AVPAK2
WG1051AVPAK2	SP1051AVPAK2
WG1052AVPAK2	SP1052AVPAK2
WG1053AVPAK2	SP1053AVPAK2
WG1054AVPAK2	SP1054AVPAK2
WG1153AVPAK2	SP1153AVPAK2
WG1154AVPAK2	SP1154AVPAK2

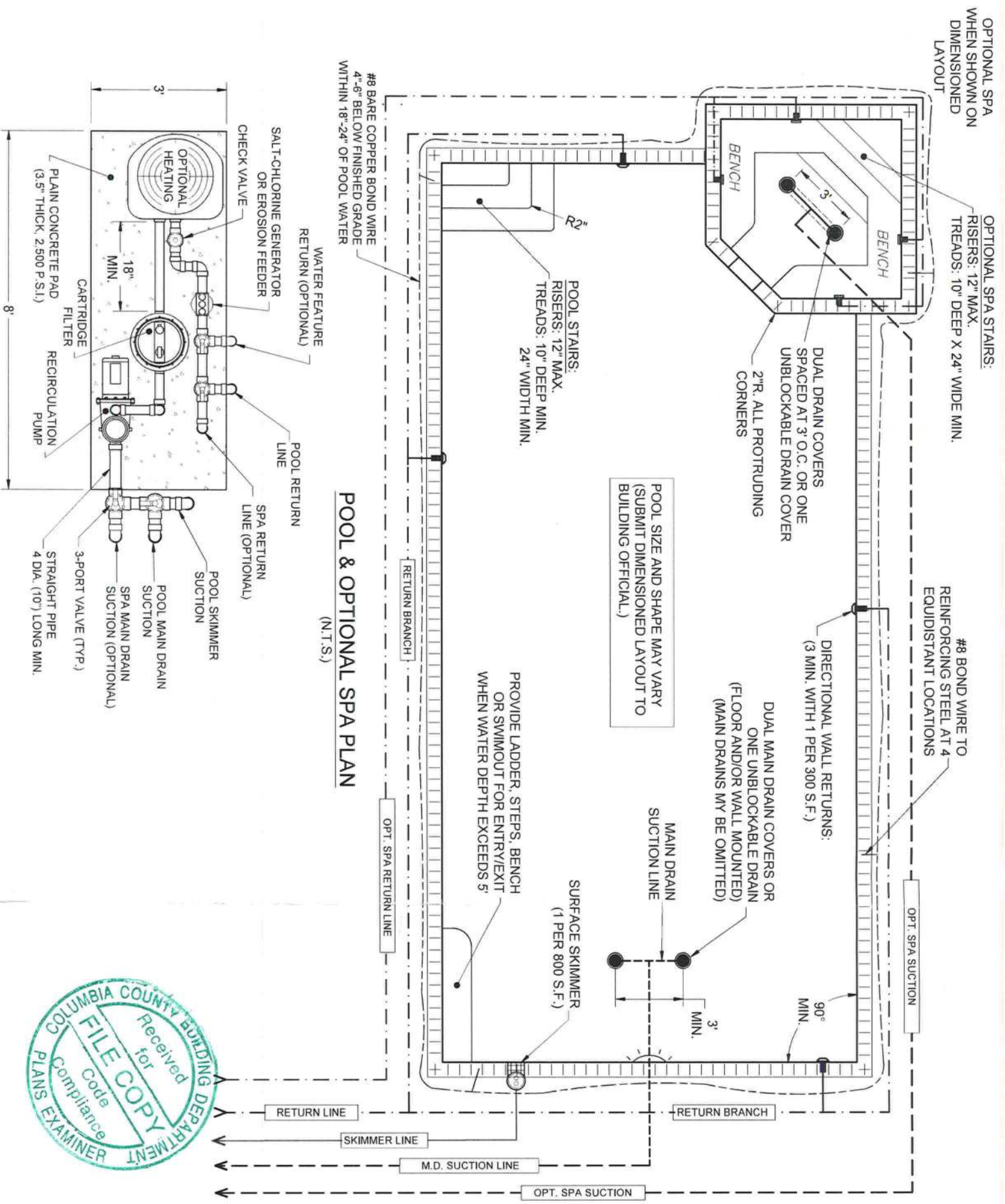
**▲ Warning – Suction Entrapment Hazard.**

Suction in suction outlets and/or suction outlet covers which are installed in a small area and/or below the surrounding surface can cause severe injury or death due to body entrapment hazard.

To reduce the risk of body entrapment, installation of the field fabricated sumps must be such that the top of the mounted cover is a minimum of 1 1/2" above the finished pool surface over an area larger than 40" on a diagonal.



63467



NOTES:

1. THESE PLANS ARE APPLICABLE TO RESIDENTIAL SWIMMING POOLS OF LESS THAN 108,000 GALLONS AND 148 G.P.M. PUMP RATE.
2. APPLICABLE CODES: FLORIDA BUILDING CODE, 7<sup>TH</sup> EDITION (2020), SECTION 454.2 PRIVATE SWIMMING POOLS, ANSI/APSP-3, ANSI/APSP-5, ANSI/APSP-7, & ANSI/APSP/ICC-15.
3. SAFETY BARRIERS FOR THE POOL SHALL BE PROVIDED IN ACCORDANCE WITH F.B.C. SECTION 454.2.17 INCLUDING WINDOW AND DOOR ALARMS IF APPLICABLE.
4. ALL SUCTION OUTLET FITTING ASSEMBLIES (DRAIN COVERS, FRAMES AND FASTENERS) ARE TO COMPLY WITH ANSI/APSP/ICC-16 (2017) AND ARE TO BE INSTALLED PER THE MANUFACTURER'S INSTRUCTIONS.
5. ALL SUCTION OUTLET FITTING ASSEMBLIES MUST INCLUDE THE MANUFACTURER'S SUMP OR FIELD-BUILT SUMP WITH INTERIOR DIMENSIONS PER THE MANUFACTURER'S INSTRUCTIONS.
6. CONSTRUCT POOL ON COMPACTED OR UNDISTURBED SOIL WITH A 1,500 P.S.F. MINIMUM BEARING CAPACITY. CONTACT THE ENGINEER SHOULD ANY MARL, MUCK, CLAYEY, ORGANIC OR UNSUITABLE MATERIAL BE ENCOUNTERED IN THE POOL EXCAVATION FOR SOIL CORRECTION RECOMMENDATIONS.
7. THE LOCAL GROUND WATER TABLE SHALL BE MAINTAINED BELOW THE POOL STRUCTURE DURING CONSTRUCTION AND ANY TIME THE POOL WATER IS EMPTY FOR MAINTENANCE.
8. POOL PIPING SHALL BE SCH. 40 PVC, STAMPED NSF-PW APPROVED, ALL PIPING, VALVES, EQUIPMENT AND MATERIALS USED SHALL CONFORM TO THE F.B.C., PLUMBING.
9. CHLORINATING AND/OR DISINFECTANT EQUIPMENT SHALL COMPLY WITH THE LATEST ANSI/NSF-50.
10. PUMPS SHALL BE 3 H.P. OR LESS AND COMPLY WITH ANSI/UL 1081. PUMPS EQUAL TO OR EXCEEDING 1 H.P. SHALL BE TWO SPEED MINIMUM WITH THE RECIRCULATION RATE MET A LOW SPEED OF AT LEAST 1/2 THAT OF THE MAXIMUM PUMP SPEED.
11. ANY POOL LIGHTING, ALL ELECTRICAL WORK, INSTALLATION, GROUNDING AND BONDING OF POOL EQUIPMENT, HANDRAILS AND LIGHTS TO THE POOL REINFORCING STEEL SHALL COMPLY WITH CHAPTER 27 OF THE FLORIDA BUILDING CODE AND N.E.P.A. 70. (2017 EDITION) ARTICLE 680.
12. HEAT PUMPS SHALL COMPLY WITH THE LATEST UL 559. ELECTRIC HEATERS SHALL COMPLY WITH UL 1261. ANY GAS PIPING SHALL COMPLY WITH F.B.C., FUEL GAS. GAS HEATERS SHALL COMPLY WITH LATEST ANSI-Z21.56.
13. ONE MEANS OF EXIT FROM THE SHALLOW AND DEEP END CONSISTING OF A LADDER, BENCH, UNDERWATER SEAT OR SWIM-OUT SHALL BE PROVIDED FOR WATER DEPTH 5' OR GREATER. PROVIDE TWO MEANS OF EXIT FOR POOLS WIDER THAN 36'.
14. UNDERWATER SEATS, BENCHES, AND SWIM-OUTS SHALL BE A MAXIMUM OF 20" BELOW THE WATERLINE.
15. THIS POOL DOES NOT PROVIDE A MINIMUM DIVING WATER ENVELOPE. NO DIVING OR DIVING EQUIPMENT IS ALLOWED.
16. POOL PLUMBING PIPE SIZES SHALL BE PROVIDED BASED ON THE CONTRACTOR'S OR ENGINEER'S ANSI / APSP / ICC COMPLIANCE CALCULATIONS WITH MINIMUM PIPE SIZES PER BELOW:

PIPE SIZE CHART: (ANSI-5 & F.B.C. ALLOWABLE VELOCITIES)			
PUMP RATE (GPM)	RETURN LINES (10'/SEC.)	SUCTION LINES (8'/SEC.)	
0 - 51	1 1/2"	1 1/2"	
52 - 63	1 1/2"	2"	
64 - 84	2"	2"	
85 - 104	2"	2 1/2"	
105 - 119	2 1/2"	2 1/2"	
120 - 148	2 1/2"	3"	

64

SINGLE PUMP EQUIPMENT SCHEMATIC (N.T.S.)

TYPICAL PLAN NOTE:

THESE STANDARD PLANS & DETAILS INDICATE TYPICAL BUILDING CODE REQUIREMENTS FOR FLORIDA PRIVATE SWIMMING POOLS. POOL BUILDER TO PROVIDE SITE SPECIFIC POOL PLAN FOR POOL LAYOUT AND DEPTHS.

STANDARD DETAILS

TYPICAL PRIVATE SWIMMING POOL

Prepared For: THREE PALM POOLS, LLC  
P.O. Box 152, Newberry, Florida 32669

CREST ENGINEERING

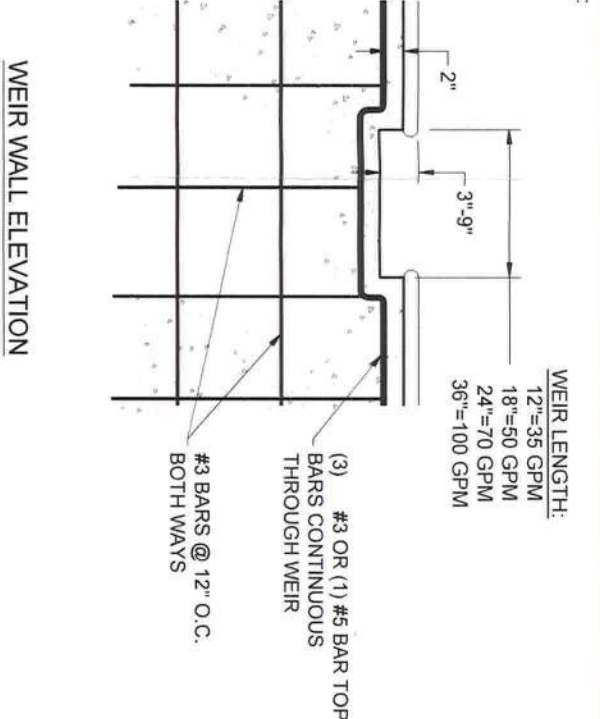
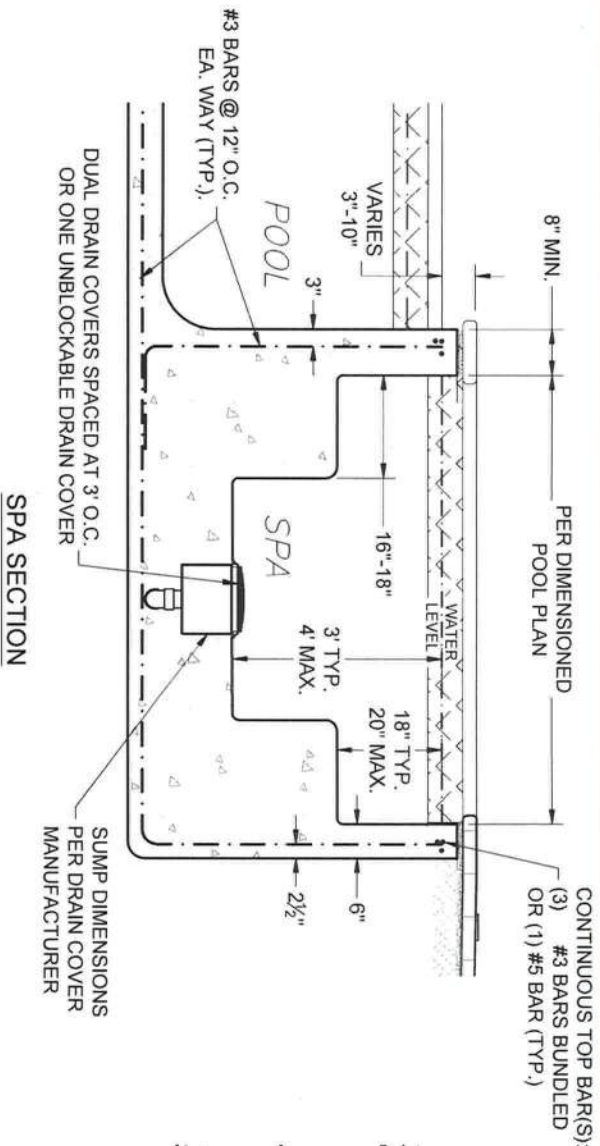
of Sarasota, LLC

3402 Magic Oak Lane, Sarasota, Florida 34232  
Phone: (941) 377-8811  
Email: info@crestfl.com

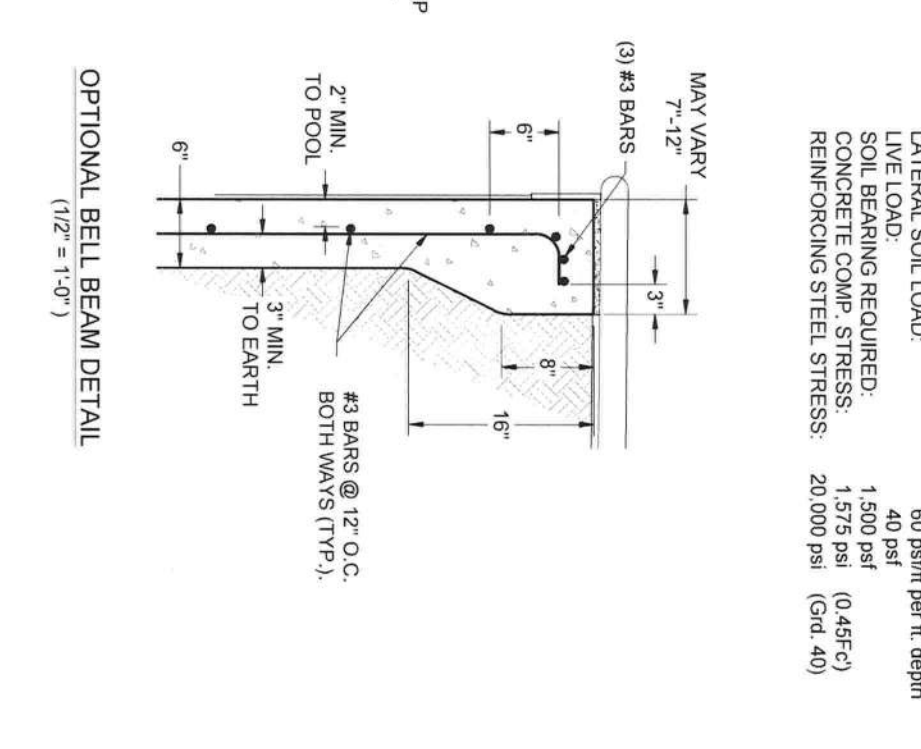
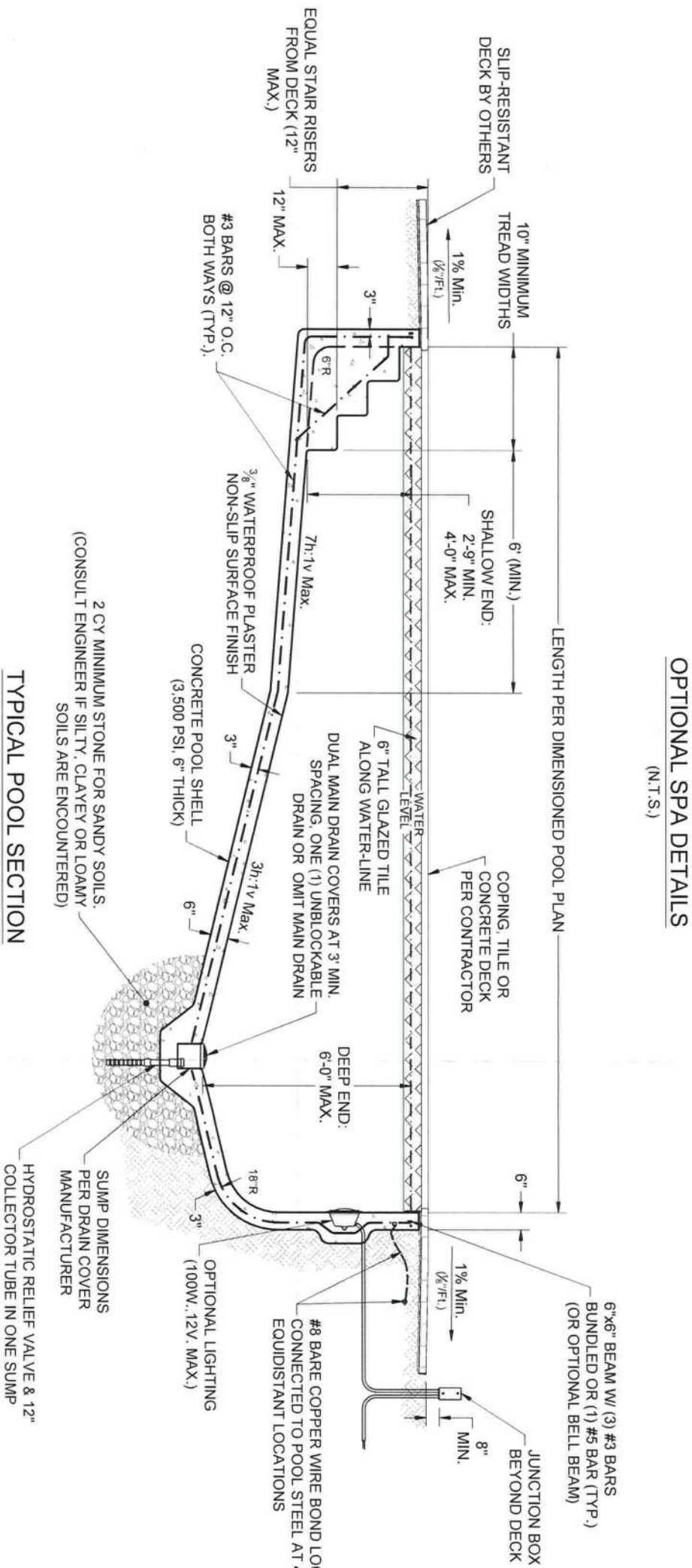
Florida Engineering Firm No. 28100

Date: 8-29-2023  
Project No.: S0416  
Michael L. Shannon, P.E.  
Fla. License # 67896  
AUG 29 2023





- SPA NOTES:**
- SPA CONSTRUCTION SHALL CONTAIN NO PROTRUSIONS, EXTENSIONS, MEANS OF ENTANGLEMENT OR OTHER OBSTRUCTION WHICH CAN CAUSE ENTRAPMENT OR INJURY OF USER.
  - MAXIMUM WATER DEPTH SHALL BE 4'-0" BELOW WATER LEVEL.
  - MAXIMUM SEAT DEPTH SHALL BE 28" BELOW WATER LEVEL.
  - STEPS TO HAVE UNIFORM RISER HEIGHTS, 10" MIN. TREAD AND HAVE 240 SQ. IN. SURFACE AREA.
  - MAXIMUM FLOOR SLOPE SHALL BE 1V:12H.
  - POTABLE WATER HOSE BIB W/ VACUUM BREAKER TO BE LOCATED ON THE POOL/SPA DECK.
  - WEIR FLOW RATES ARE BASED ON 1" HEAD ON WEIR.
- POOL (& SPA) STRUCTURAL NOTES:**
- CONCRETE MATERIAL TO HAVE 3,500 PSI MINIMUM COMPRESSIVE STRENGTH (f'c) AT 28 DAYS.
  - REINFORCING STEEL TO BE GRADE 40 DEFORMED BARS WITH 2" MINIMUM COVER. SPLICE #3 BARS 16" & #5 BARS 26" MIN.
  - DESIGN CRITERIA: DESIGN BASED ON ALLOWABLE STRESS CRITERIA OF THE FLORIDA BUILDING CODE, 7<sup>TH</sup> EDITION (2020) WITH THE FOLLOWING LOADS AND ALLOWABLE STRESSES:
- |                           |                         |
|---------------------------|-------------------------|
| LATERAL SOIL LOAD:        | 60 psf/ft per ft. depth |
| LIVE LOAD:                | 40 psf                  |
| SOIL BEARING REQUIRED:    | 1,500 psf               |
| CONCRETE COMP. STRESS:    | 1,575 psi (0.45f'c)     |
| REINFORCING STEEL STRESS: | 20,000 psi (Grd. 40)    |



**TYPICAL PLAN NOTE:**  
THESE STANDARD PLANS & DETAILS INDICATE TYPICAL BUILDING CODE REQUIREMENTS FOR FLORIDA PRIVATE SWIMMING POOLS. POOL BUILDER TO PROVIDE SITE SPECIFIC POOL PLAN FOR POOL LAYOUT AND DEPTHS.

**STANDARD POOL SECTION (6' MAX. DEPTH)**  
**FLORIDA PRIVATE SWIMMING POOL**  
Prepared For: **THREE PALM POOLS, LLC**  
P.O. Box 152, Newberry, Florida 32669

**CREST ENGINEERING**  
of Sarasota, LLC  
3402 Magic Oak Lane, Sarasota, Florida 34232  
Phone: (941) 377-8811  
Email: [info@crestfl.com](mailto:info@crestfl.com)  
Florida Engineering Firm No. 28100