

SHANNA MEADOWS

IN SECTION 34
TOWNSHIP 5 SOUTH, RANGE 16 EAST
COLUMBIA COUNTY, FLORIDA

ABBREVIATIONS LEGEND

PSM = PROFESSIONAL SURVEYOR & MAPPER
PLS = PROFESSIONAL LAND SURVEYOR
PRM = PERMANENT REFERENCE MONUMENT
PCP = PERMANENT CONTROL POINT
AC = ACRES CH = CHORD
L = ARC LENGTH R = RADIUS
T = TANGENT Δ = CENTRAL ANGLE
CON. = CONCRETE MDN. = MONUMENT
C = CENTERLINE
LB = LICENSED BUSINESS NO.

COMMENCE

SECTION CORNER

34 35

3 2

COMMISSION APPROVAL

SIGNED:

[Signature]

Chairman

DATE: 8/9/2001

ATTEST:

[Signature]

Clerk

CLERK'S CERTIFICATE

THIS PLAT having been approved by the Columbia County Board of County Commissioners is accepted for files and recorded this day of Aug, 2001, in Plat Book 7, Page 76.

SIGNED:

[Signature]

Clerk of Circuit Court

NOTICE: All Platted utility easements shall provide that such easements shall also be easements for the construction, installation, maintenance, and operation of cable television services, provided, however, no such construction, installation, maintenance, and operation of cable television services shall interfere with the facilities and services of electric, telephone, gas, or other public utility. In the event that a cable television company damages the facilities of a public utility, it shall be solely responsible for the damages.

NOTICE: This Plat as recorded in its graphic form, is the official depiction of the subdivided lands described herein and will in no circumstances be supplanted in authority by any other graphic or digital form of the Plat. There may be additional restrictions that are not recorded on this Plat that may be found in the Public Records of this County.

DEVELOPER

Subrandy Limited Partnership
P.O. Box 513, Lake City, FL 32956
Contact: Brad Dicks (904) 752-8585

ACCEPTANCE FOR MAINTENANCE

I HEREBY CERTIFY that the improvements have been constructed in an acceptable manner and in accordance with County specifications or that a performance bond or instrument in the amount of \$_____ has been posted to assure completion of all required improvements and maintenance in case of default.

SIGNED: *[Signature]* DATE: 8/20/01
Director of Public Works

DEDICATION

KNOWN ALL MEN BY THESE PRESENTS that Subrandy Limited Partnership, as owner, have caused the lands hereon shown to be surveyed, subdivided and platted, to be known as SHANNA MEADOWS, and that all Rights-of-Way and Easements are hereby dedicated to the perpetual use of the Public for uses as shown hereon.

[Signature]
Bradley N. Dicks, General Partner
Subrandy Limited Partnership
owner

[Signature]
Witness
[Signature]
Witness

ACKNOWLEDGEMENT

The foregoing dedication was acknowledged before me this 14 day of August, 2001, by Bradley N. Dicks, Gen. Partner, Subrandy Limited Partnership. He is personally known to me or has produced _____ as identification and (did / did not) take an oath.

My Commission Expires: _____

STATE OF FLORIDA
COUNTY OF COLUMBIA

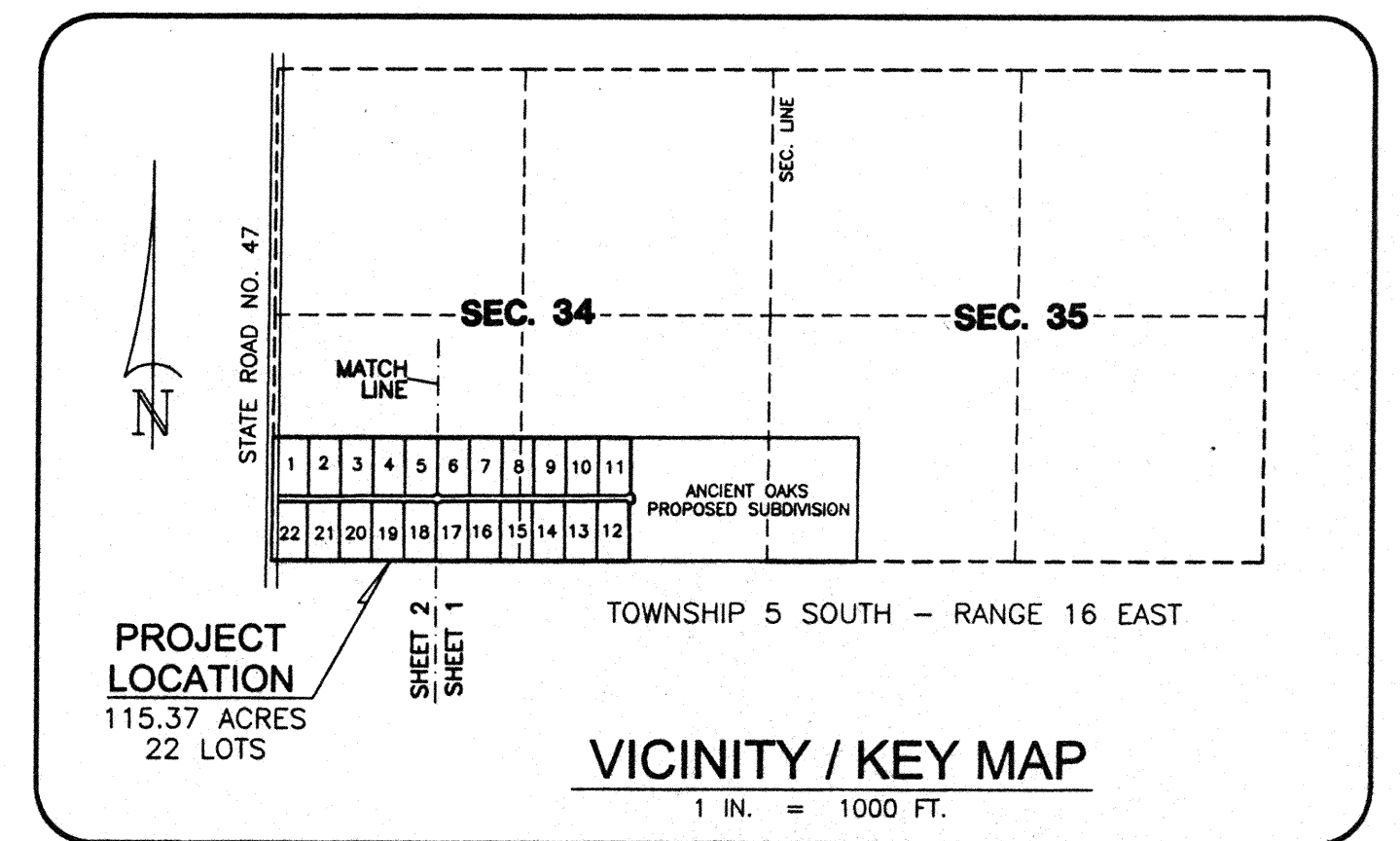
NOTARY SEAL

[Signature]
Notary Public

COUNTY ATTORNEY'S CERTIFICATE

I HEREBY CERTIFY that I have examined the foregoing Plat and that it complies with the Columbia County Subdivision Ordinance and Chapter 177 of the Florida Statutes.

SIGNED: *[Signature]* DATE: August 21, 2001
County Attorney, Columbia County



VICINITY / KEY MAP

1 IN. = 1000 FT.

PROJECT LOCATION
115.37 ACRES
22 LOTS

SHEET 1 OF 2

Donald F. Lee and Associates, Inc.
SURVEYORS - ENGINEERS
950 South Ridgewood Drive, Lake City, Florida 32055
Phone: (386) 755-6166 FAX: (386) 755-6167

FILE NUMBER 01-15565
FILED AND RECORDED
8-21-01
COLUMBIA COUNTY, FLORIDA
BY: [Signature] D.C.