

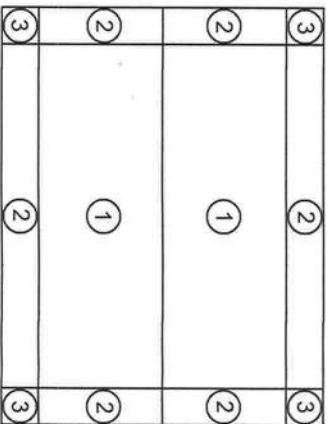
INSTALLATION NOTES AND SPECIFICATIONS

- DESIGN IS FOR MAXIMUM 30'-0" WIDE X 10'-0" EAVE HEIGHT UTILITY STRUCTURES.
- DESIGN WAS DONE IN ACCORDANCE WITH THE 2020 FLORIDA BUILDING CODE (FBC) 7TH EDITION.
- DESIGN LOADS ARE AS FOLLOWS:
  - DEAD LOAD = 15 PSF
  - LIVE LOAD = 12 PSF
  - GROUND SNOW LOAD = 0 PSF (24'-0" WITH U-CHANNEL RAFTER TIE)
  - ULTIMATE WIND SPEED 170 MPH (NOMINAL WIND SPEED  $V_{ind}$  132 MPH)
- MAXIMUM RAFTER / POST AND END POST SPACING = 4'-0" (UNLESS NOTED OTHERWISE).
- RISK CATEGORY: I
- WIND EXPOSURE CATEGORY: B
- SPECIFICATIONS APPLICABLE TO 26 GAUGE METAL PANELS FASTENED DIRECTLY TO 2 1/2" X 2 1/2" - 14 GAUGE TUBE STEEL (TS) FOR (UNLESS NOTED OTHERWISE).
- AVERAGE FASTENER SPACING ON CENTERS ALONG RAFTERS OR HAT CHANNELS, AND COLUMNS (INTERIOR OR END) = 6" O.C. (MAX).
- FASTENERS CONSIST OF 7/8" X 3/4" SELF DRILLING FASTENER (SDF) FOR. USE CONTROL SEAL WASHER WITH EXTERIOR FASTENERS SPECIFICATIONS APPLICABLE ONLY FOR MEAN ROOF HEIGHT OF 20'-0" OR LESS, AND ROOF SLOPES OF 14° (3:12 PITCH) OR LESS SPACING REQUIREMENTS FOR OTHER ROOF HEIGHTS AND / OR SLOPES MAY VARY.
- GROUND ANCHORS SHALL BE INSTALLED THROUGH BASE RAIL WITHIN 6" OF EACH RAFTER COLUMN ALONG SIDES AND ENDS.
- GROUND ANCHORS (SOIL NAILS) CONSIST OF #4 REBAR WITH WELDED NUT X 30" LONG IN SUITABLE SOIL. CONDITIONS OPTIONAL ANCHORAGE MAY BE USED IN SUITABLE SOILS AND MUST BE USED IN UNSUITABLE SOILS AS NOTED NOT ALLOWED FOR HIGH WIND APPLICATION.
- WIND FORCES GOVERN OVER SEISMIC FORCES SEISMIC PARAMETERS ANALYZED ARE:  
SOIL SITE CLASS = D  
RISK CATEGORY II/III  
 $R = 3.25$   
 $S_{DS} = 1.522$   
 $S_{D1} = 0.839$   
 $I_p = 1.0$   
 $V = C_s W$

PRODUCT APPROVAL:	
1 ROOF PANEL	APPROVAL CODE 9903.5
2 WALL PANEL	APPROVAL CODE 14024.1
3 ROLL-UP DOOR	APPROVAL CODE 17817.2
4 WALK-IN DOOR	APPROVAL CODE 17996.3
5 WINDOWS	APPROVAL CODE 993.8

NOTE: PRODUCT APPROVAL CODES PROVIDED BY OTHERS

FOR SITE SPECIFIC PLANS ONLY



WINDOW AND DOOR NOTE

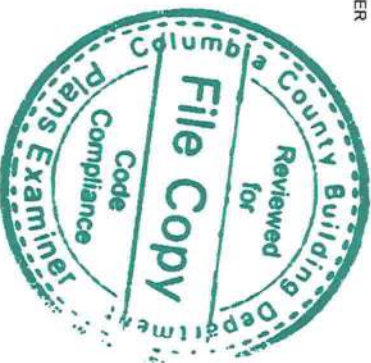
EXTERIOR WINDOWS AND GLASS DOORS SHALL BE TESTED BY AN APPROVED INDEPENDENT TESTING LABORATORY, AND BEAR AN AAMA OR WDMA OR OTHER APPROVED LABEL IDENTIFYING THE MANUFACTURER, PERFORMANCE CHARACTERISTICS AND APPROVED PRODUCT EVALUATION ENTRY TO INDICATE COMPLIANCE WITH THE REQUIREMENTS OF THE FOLLOWING SPECIFICATION.

ANSI/AMMANWMA 101/15.287  
THE CONSTRUCTION SHALL BE TESTED IN ACCORDANCE WITH ASTM E 330, STANDARD TEST METHODS FOR STRUCTURAL PERFORMANCE OF EXTERIOR WINDOWS, CURTAIN WALLS, AND DOORS BY UNIFORM STATIC AIR PRESSURE.

DESIGN WAS DONE IN ACCORDANCE WITH THE 2020 FLORIDA BUILDING CODE 7TH ED. (FBC) WITH 2012 SUPPLEMENT AMENDMENTS 2006 INTERNATIONAL BUILDING CODE (IBC), 2009 IBC AND 2012 IBC.

GENERAL NOTES:

- ALL STEEL SHALL BE 50 KSI STEEL.
- FASTEN METAL ROOF AND WALL PANELS TO FRAMING WITH 1/4" X 3/4" SELF DRILLING FASTENERS WITH CONTROL SEAL WASHER @ 6" O.C. AVERAGE.
- ALL FIELD CONNECTIONS SHALL BE 1/4" X 3/4" SELF DRILLING SCREWS.
- ALL SHOP CONNECTIONS SHALL BE WELDED.
- GROUND ANCHOR REQUIREMENTS ARE 1@ EACH CORNER & ONE EVERY OTHER INTERIOR RAFTER POST LOCATION AT A MAXIMUM 10'-0" O.C. AND BOTH SIDES OF OPENINGS WHERE BASE RAIL IS ABSENT.
- POSTRAFTER BRACING: BRACE ON EVERY POSTRAFTER CONNECTION, EXCEPT FOR END WALLS.



WIND PRESSURES (ENCLOSED)		
ZONE	DESIGN PRESSURE (PSF)	
	POSITIVE	NEGATIVE
1	13	-27
2	17	-47
3	19	-77
4	27	-29
5	30	-39

Wind Notes:

- These drawings conform to the 2020 FBC 7th Edition.
- Wind Velocity,  $V = 140$  mph  
 $V_{asd} = 108.5$  mph
- Exposure Category = B
- Risk Category = I
- ENCLOSED Building

Sheet Number

D-1

Date

04/19/23

Job Number

E03039-23

Drawn By

RJD

Checked By

KMB

Project Information

132 Nutomokee Ct.  
Lake City, FL

Prepared For

North FL Steel Buildings

Standard Notes

While every attempt has been made in the preparation of these plans to avoid mistakes, the designer cannot guarantee against human error. The contractor is ultimately responsible to verify all dimensions, conditions, and other details on the plans and notify the designer of any errors or omissions before commencing construction

BBD ENGINEERING & DESIGN FIRM, LLC

STRUCTURAL | DESIGN | SOLUTIONS

Engineering Services Provided by Kent M. Bice, P.E.

1552 6th Street S.E. - Winter Haven, FL 33880

Phone: (863) 875-5602 - Fax: (863) 508-6496

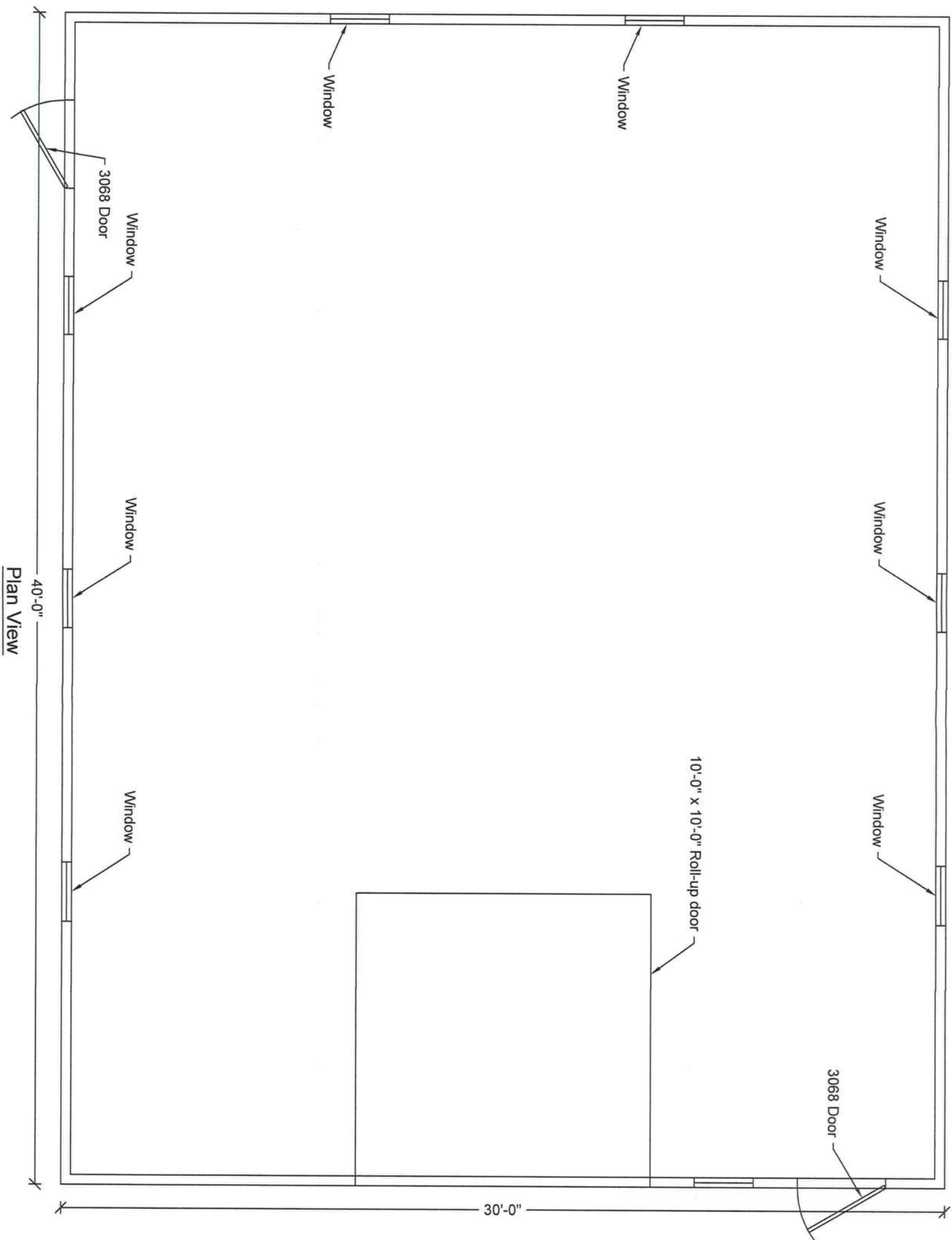
www.BBDEngineering.com

Engineer: Kent Bice

FL License #: 50421

04/19/23





Sheet Number

D-2

Date

04/19/23

Project Information

132 Nutomokee Ct.  
Lake City, FL

Job Number

E03039-23

Drawn By

RJD

Checked By

KMB

Prepared For

North FL Steel Buildings

Standard Notes

While every attempt has been made in the preparation of these plans to avoid mistakes, the designer cannot guarantee against human error. The contractor is ultimately responsible to verify all dimensions, conditions, and other details on the plans and notify the designer of any errors or omissions before commencing construction.



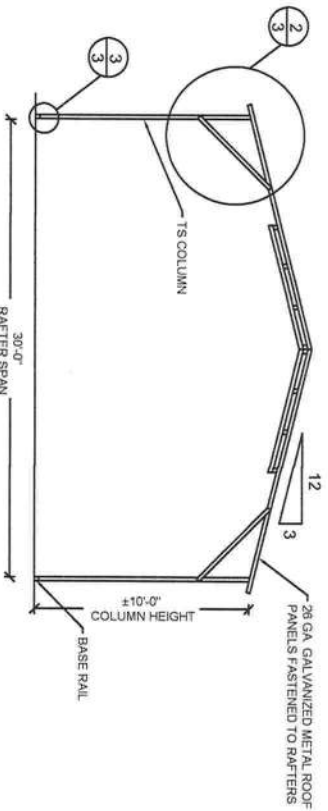
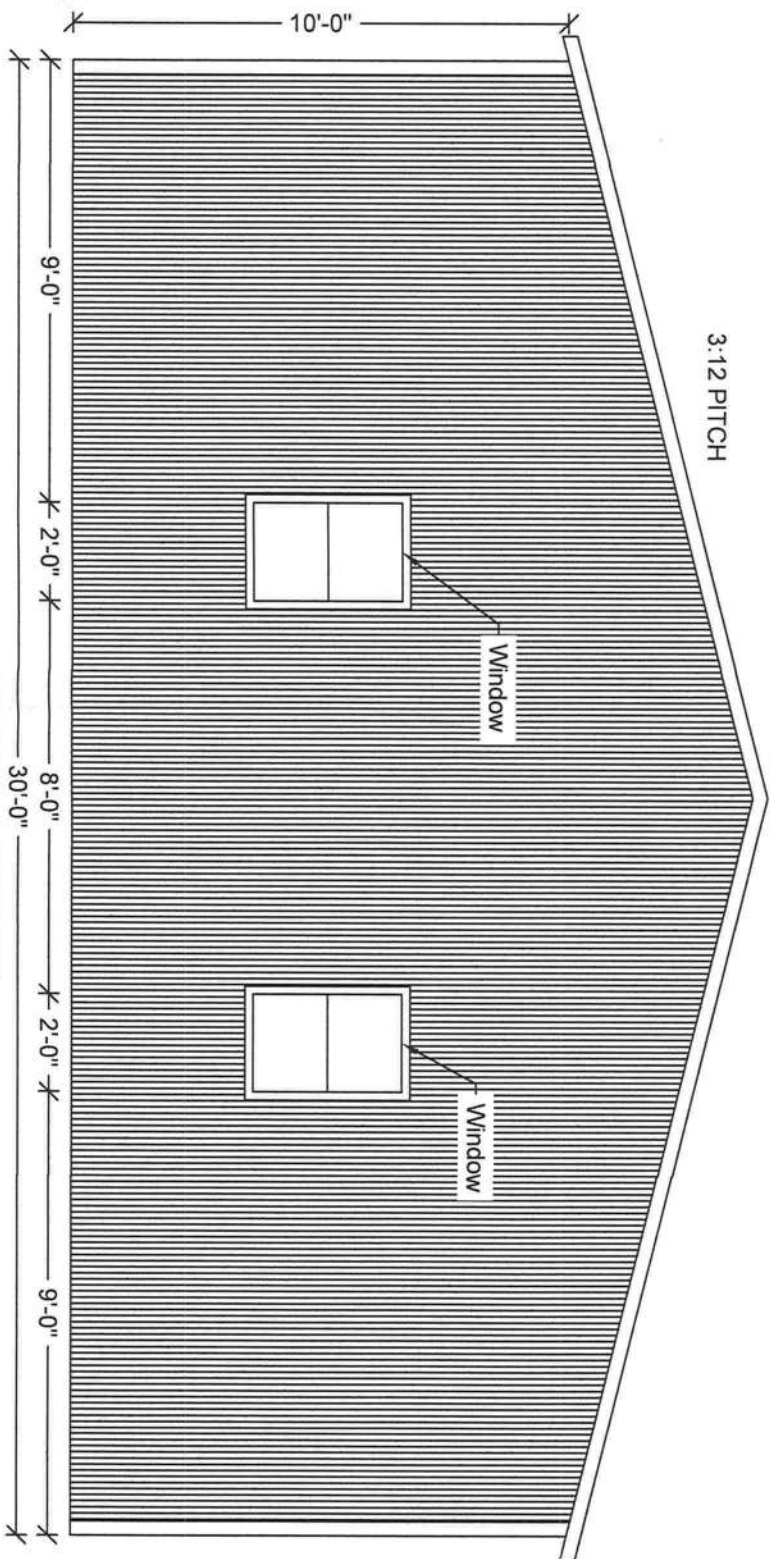
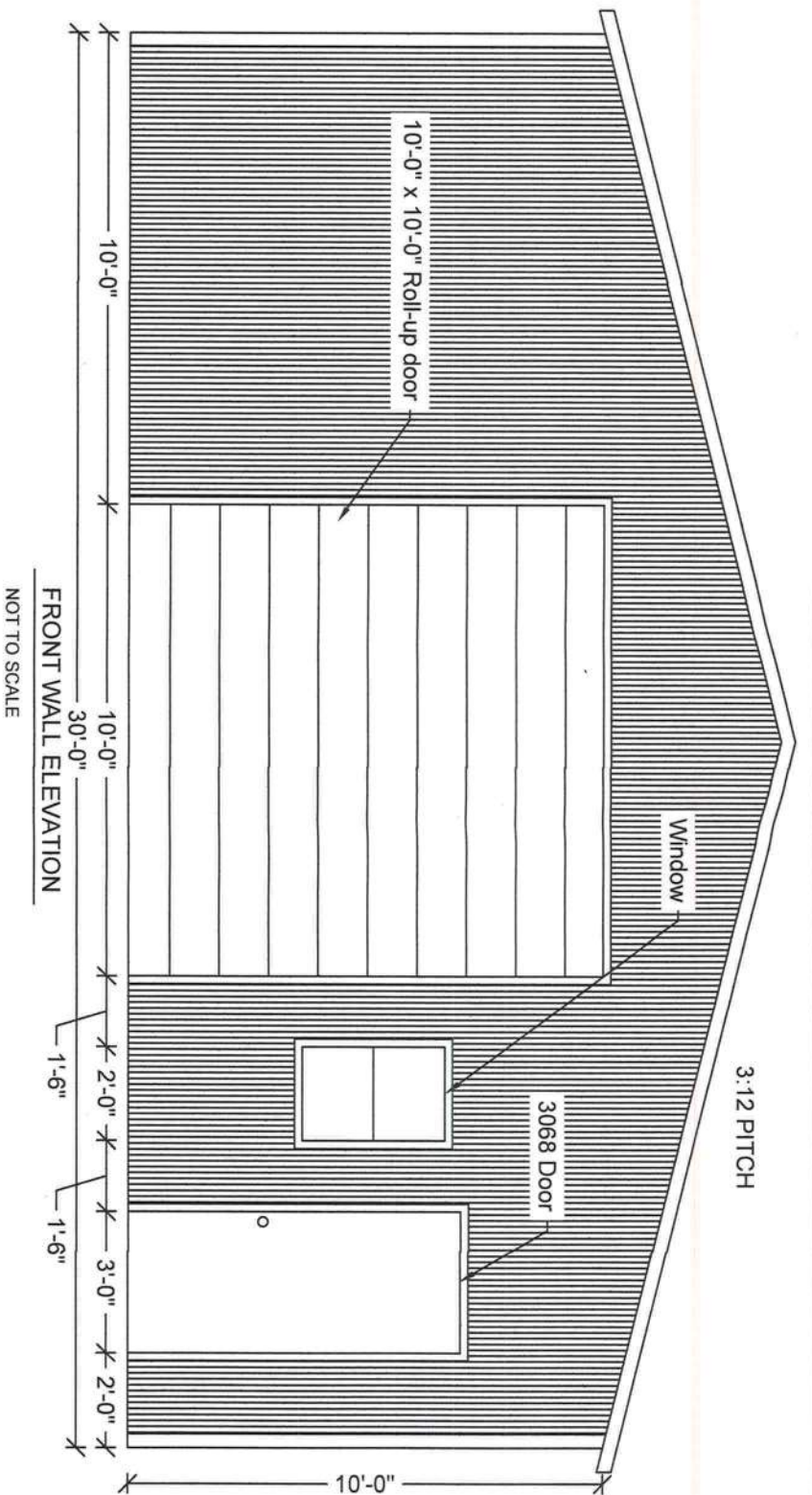
Engineering Services Provided  
by Kent M. Bice, P.E.

1552 6th Street S.E. - Winter Haven, FL 33880  
Phone: (863) 875-5602 - Fax: (863) 508-6496  
www.BBDEngineering.com

*Kent M. Bice*  
4-19-23

04/19/23

Engineer: Kent Bice  
FL License #: 50421



COPYRIGHT: The information contained in this document is copyrighted and is the exclusive property of BBD Engineering & Design Firm, LLC. Any use, duplication, or transfer of these documents without the expressed, written consent of BBD Engineering & Design Firm, LLC, is strictly prohibited.

#### Standard Notes

While every attempt has been made in the preparation of these plans to avoid mistakes, the designer cannot guarantee against human error. The contractor is ultimately responsible to verify all dimensions, conditions, and other details on the plans and notify the designer of any errors or omissions before commencing construction.



Engineering Services Provided  
by Kent M. Bice, P.E.  
1552 6th Street S.E. - Winter Haven, FL 33880  
Phone: (863) 875-5602 - Fax: (863) 508-6496  
www.BBDEngineering.com

#### Sheet Number

D-3

#### Date

04/19/23

#### Job Number

E03039-23

#### Drawn By

RJD

#### Checked By

KMB

#### Project Information

132 Nutomokee Ct.  
Lake City, FL

#### Prepared For

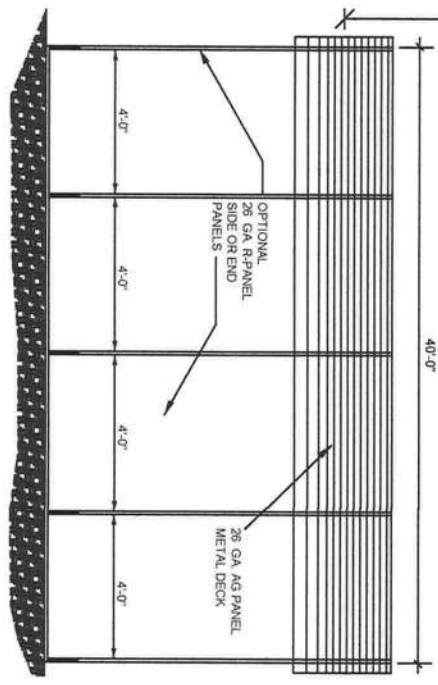
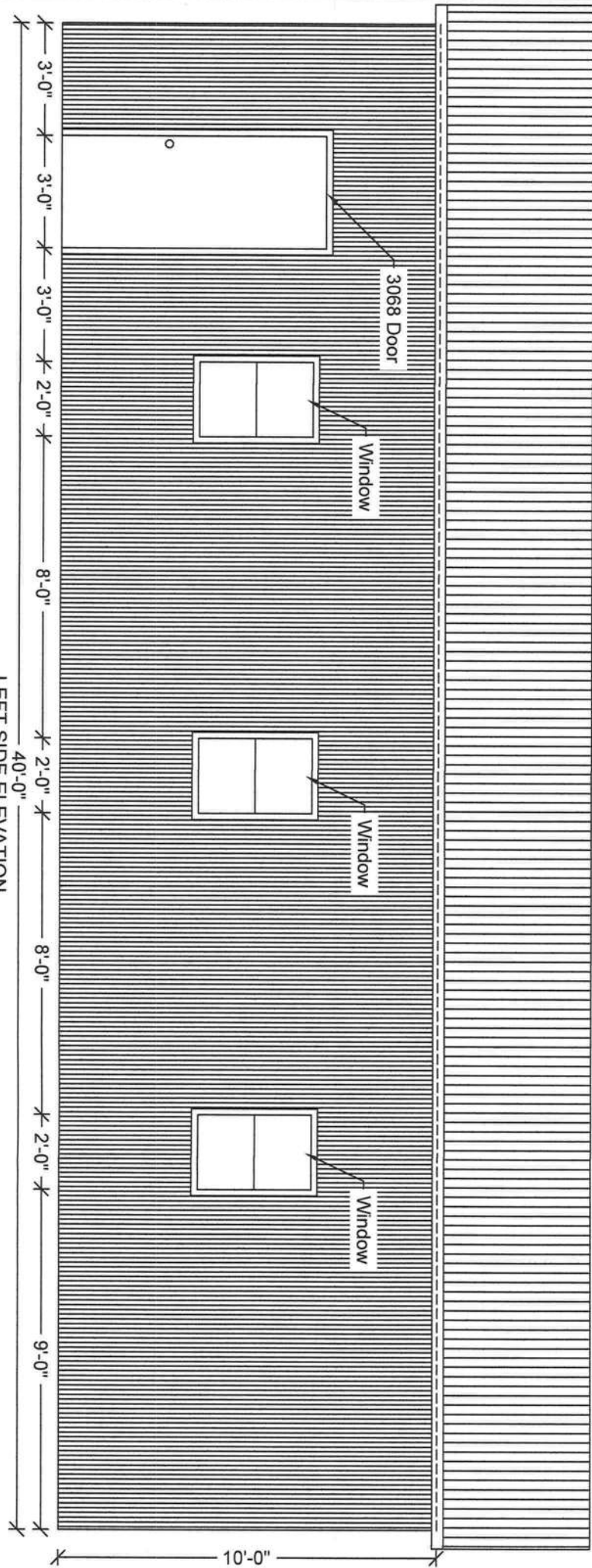
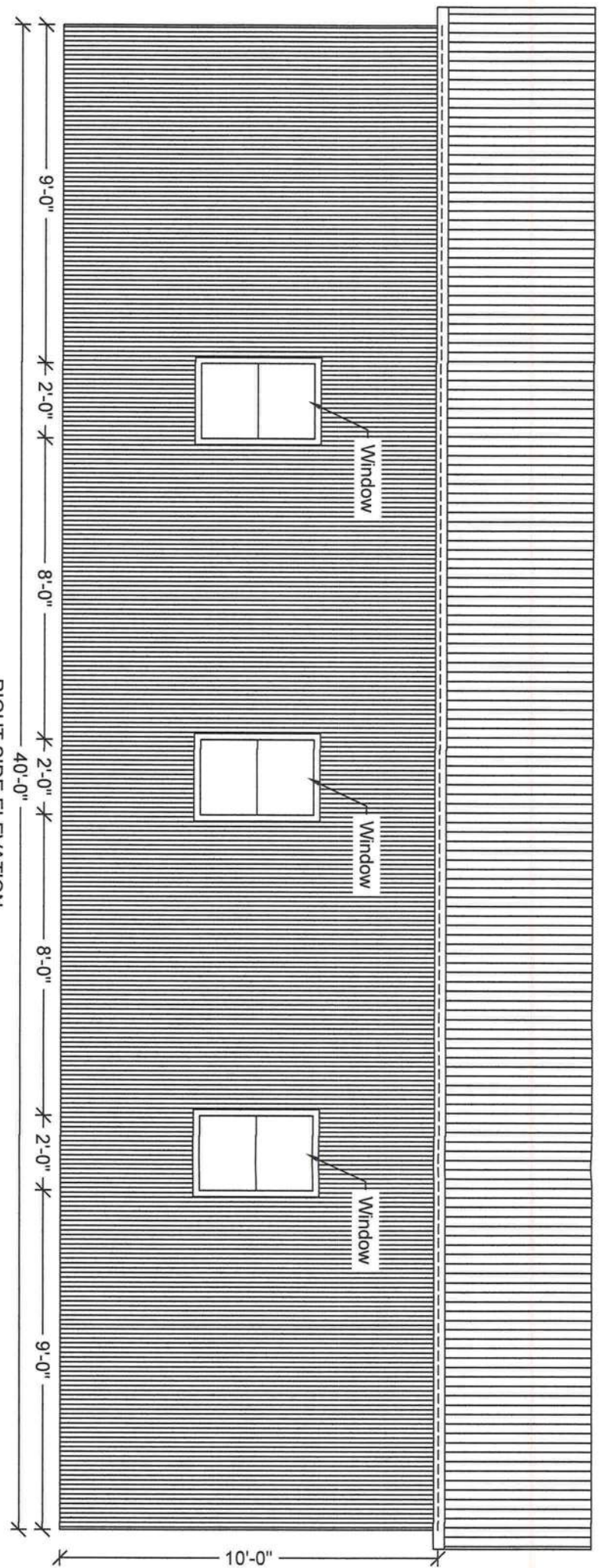
North FL Steel Buildings

Engineer: Kent Bice  
FL License #: 50421

Kent M. Bice  
4-19-23

04/19/23





COPYRIGHT: The information contained in this document is copyrighted and is the exclusive property of BBD Engineering & Design Firm, LLC. Any use, duplication, or transfer of these documents without the expressed, written consent of BBD Engineering & Design Firm, LLC, is strictly prohibited.

Sheet Number	Job Number
D-3A	E03039-23
Date	Drawn By
04/19/23	RJD
Project Information	Checked By
132 Nutomokee Ct.	KMB
	Prepared For
	North FL Steel Buildings

**Standard Notes**

While every attempt has been made in the preparation of these plans to avoid mistakes, the designer cannot guarantee against human error. The contractor is ultimately responsible to verify all dimensions, conditions, and other details on the plans and notify the designer of any errors or omissions.

**BBD ENGINEERING & DESIGN FIRM, LLC**

**STRUCTURAL | DESIGN | SOLUTIONS**

Engineering Services Provided by Kent M. Bice, P.E.

1552 6th Street S.E. - Winter Haven, FL 33880  
Phone: (863) 875-5602 - Fax: (863) 508-6496  
www.BBDEngineering.com

*Kent M. Bice*

*4-19-23*

Engineer: Kent Bice  
FL License #: 50421

04/19/23

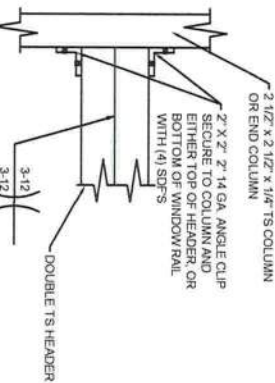




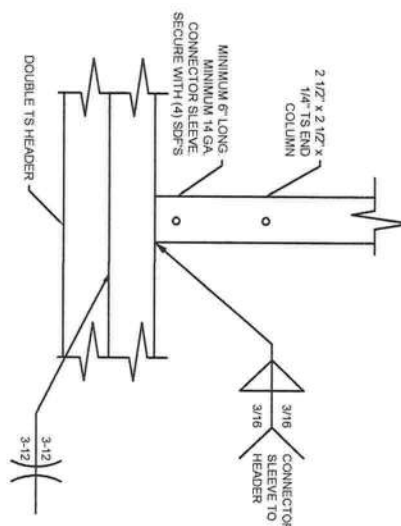
2  
SCALE: NTS



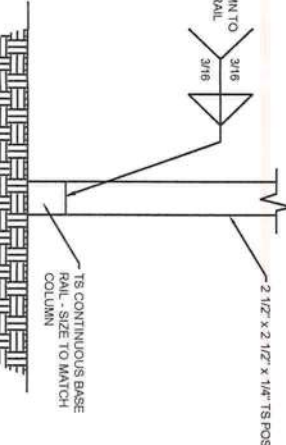
2 1/2" x 1/4" TS COLUMN  
D COLUMN  
2" 2" 1/4 GA ANGLE CLIP



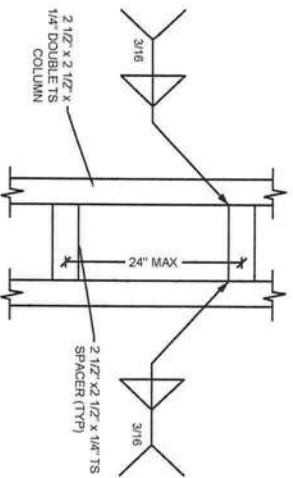
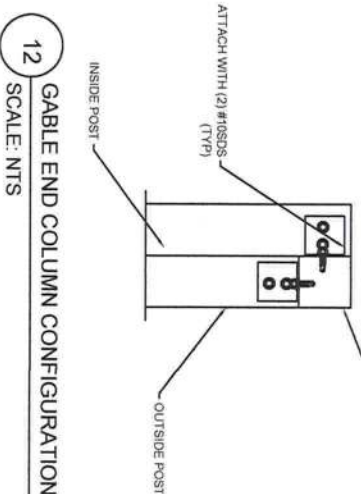
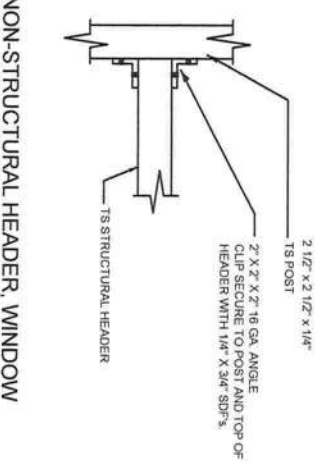
5A  
COLUMN OR WINDOW RAIL TO POST  
CONN. DETAIL  
SCALE: NTS



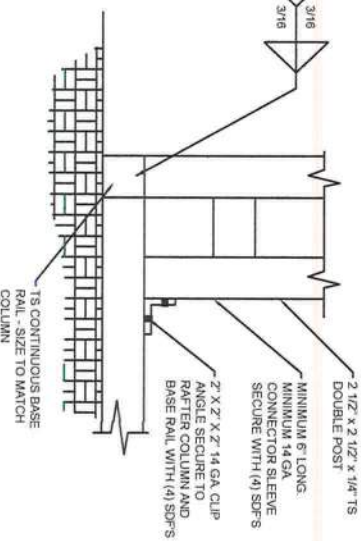
10  
HEADER/COLUMN CONN. DETAIL  
SCALE: NTS



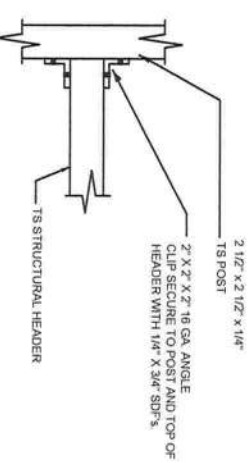
3 POST/BASE RAIL CONN. DETAIL  
SCALE: NTS



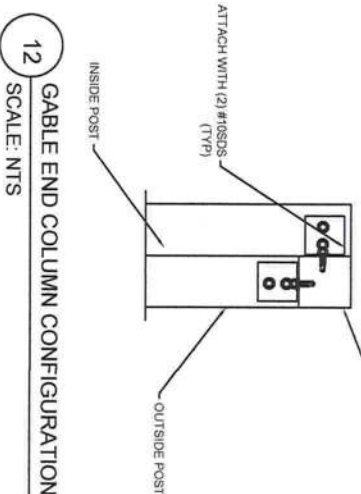
12" MIN



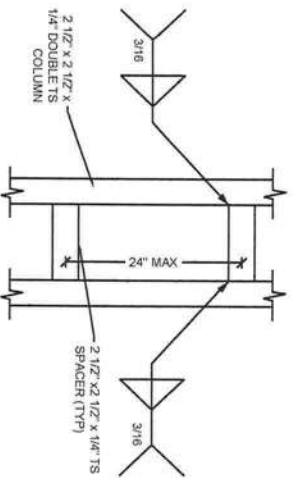
BE



y  
des



number \_\_\_\_\_



11.9

04/19/23

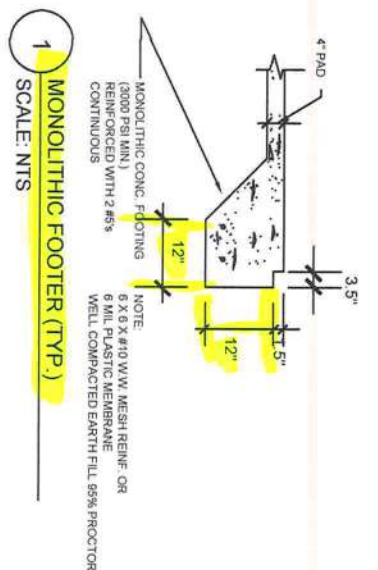
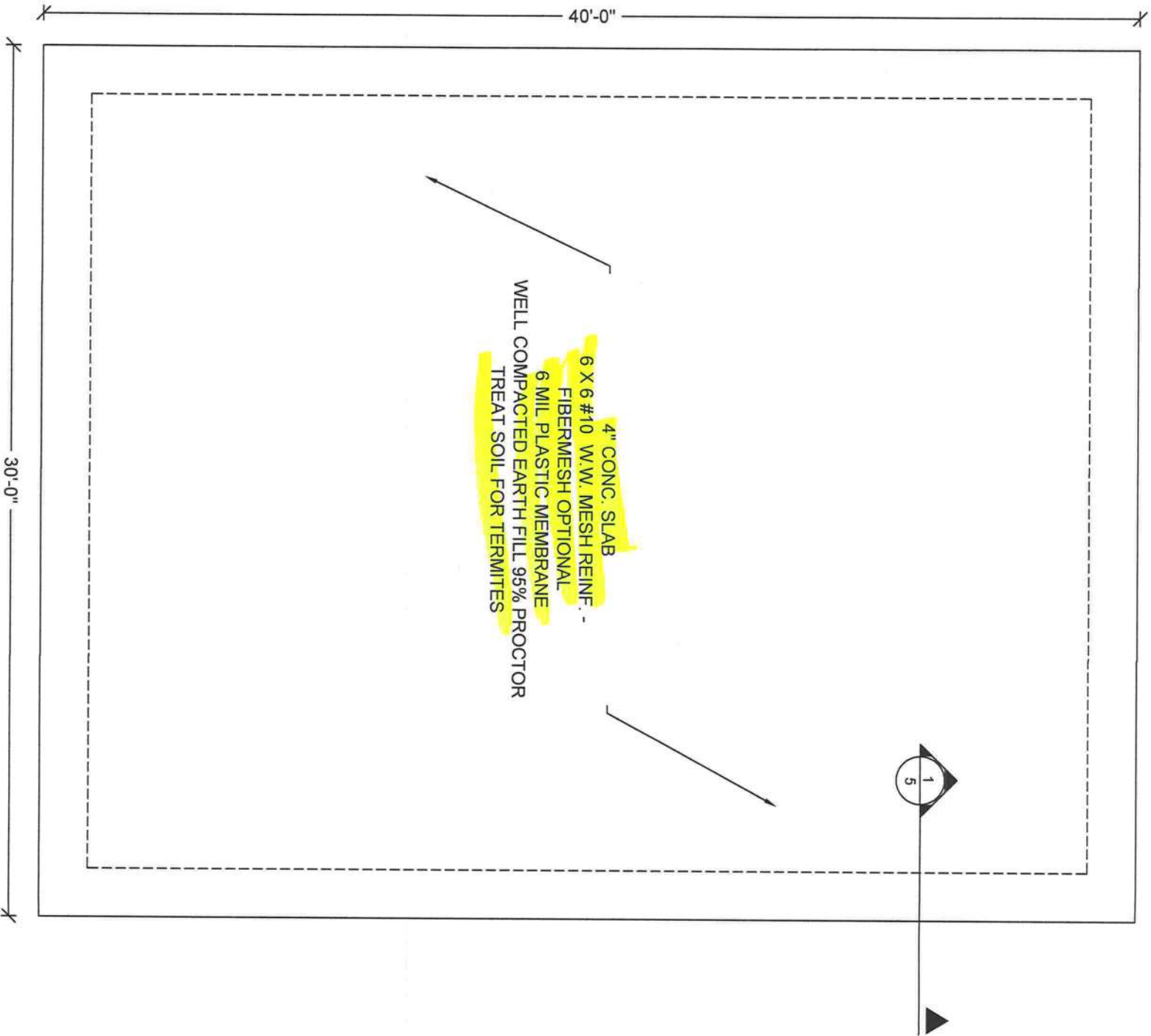
## Standard Notes

While every attempt has been made in the preparation of these plans to avoid mistakes, the designer cannot guarantee against human error. The contractor is ultimately responsible to verify all dimensions, conditions, and other details on the plans and notify the designer of any errors or omissions before commencing construction.

Sheet Number
D-4
Date
04/19/23
Project Information
132 Nutomokee Ct.

4-19-23





CONCRETE:  
CONCRETE SHALL HAVE A MINIMUM COMPRESSIVE STRENGTH OF 3000 PSI AT 28 DAYS.  
COVER OVER REINFORCING STEEL  
FOR FOUNDATIONS, MINIMUM CONCRETE COVER OVER REINFORCING BARS SHALL BE:  
3 INCHES IN FOUNDATIONS WHERE THE CONCRETE IS CAST AGAINST AND  
PREMANENTLY IN CONTACT WITH EARCH OR EXPOSED TO THE EARTH OR WEATHER  
AND 1 1/2" ELSEWHERE. REINFORCING BARS EMBEDDED IN GROUTED CELLS SHALL HAVE  
A MINIMUM CLEAR DISTANCE OF 1/4" FOR FINE GROUT OR 1/2" FOR COURSE GROUT  
BETWEEN REINFORCING BARS AND ANY FACE OF A CELL. REINFORCING BARS USED IN  
MASONRY WALLS SHALL HAVE A MASONRY COVER (INCLUDING GROUT) OF NOT LESS THAN  
2" FOR MASONRY UNITS WITH FACE EXPOSED TO EARTH OR WEATHER 1 1/2" FOR MASONRY  
UNITS NOT EXPOSED TO EARCH OR WEATHER.

REINFORCING STEEL:  
THE REINFORCING STEEL SHALL BE MINIMUM GRADE 40.  
GALVANIZATION:  
METAL ACCESSORIES FOR USE IN EXTERIOR WALL CONSTRUCTION NOT DIRECTLY EXPOSED TO  
THE WEATHER SHALL BE GALVANIZED IN ACCORDANCE WITH ASTM A 153, CLASS B-2. METAL  
PLATE CONNECTORS, SCREWS, BOLTS AND NAILS EXPOSED DIRECTLY TO THE WEATHER SHALL BE  
IN STAINLESS STEEL OR HOT DIPPED GALVANIZED.

REINFORCEMENT MAY BE BENT IN THE SHOP OR THE FIELD PROVIDED:  
1. ALL REINFORCEMENT IS BENT COLD  
2. THE DIAMETER OF THE BEND, MEASURED ON THE INSIDE OF THE BAR, IS NOT LESS THAN 6-BAR  
DIAMETERS AND  
3. REINFORCEMENT PARTIALLY EMBEDDED IN CONCRETE SHALL NOT BE FIELD BENT.

EXCEPTION: WHERE BENDING IS NECESSARY TO ALIGN BARS WITH A VERTICAL CELL, BARS PARTIALLY  
EMBEDDED IN CONCRETE SHALL BE PERMITTED TO BE BENT AT A SLOPE NOT MORE THAN 1" OF  
THE HORIZONTAL DISPLACEMENT TO 6" OF VERTICAL BAR LENGTH.

#### Standard Notes

While every attempt has been made in the preparation of these plans to avoid mistakes, the designer cannot guarantee against human error. The contractor is ultimately responsible to verify all dimensions, conditions, and other details on the plans and notify the designer of any errors or omissions before commencing construction.



Engineering Services Provided  
by Kent M. Bice, P.E.

1552 6th Street S.E. - Winter Haven, FL 33880  
Phone: (863) 875-5602 - Fax: (863) 508-6496  
www.BBDEngineering.com

Sheet Number

D-6

Date

04/19/23

Job Number

E03039-23

Drawn By

RJD

Checked By

KMB

Project Information

132 Nutomokee Ct.  
Lake City, FL

Prepared For

North FL Steel Buildings

Engineer Name: Kent M. Bice  
FL License #: 50421  
FL COA #: 30468

*Kent M. Bice*  
4-19-23