

CODES AND STANDARDS

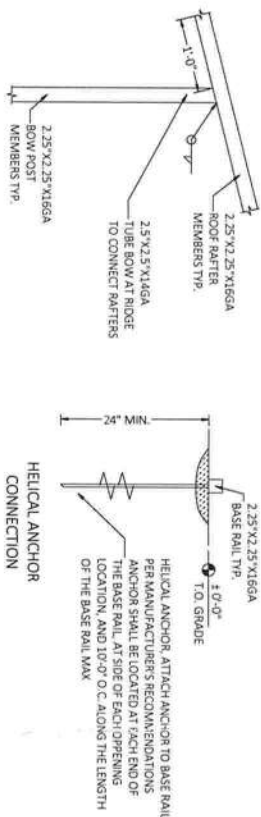
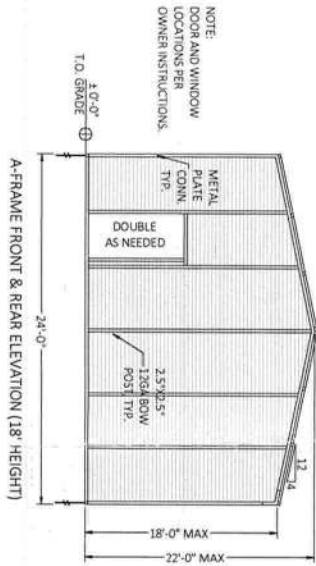
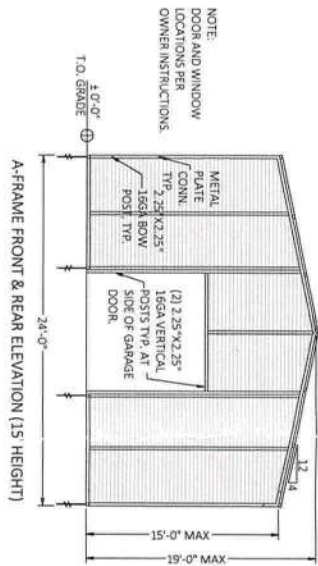
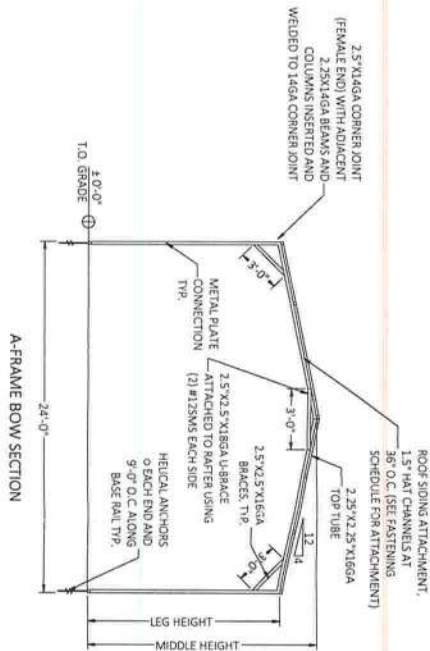
1. WIND LOADS AS PER:
A. FLORIDA RESIDENTIAL BUILDING CODE 7TH EDITION (2020) WITH AN ULTIMATE DESIGN WIND SPEED OF 150 MPH- EXPOSURE B, NOMINAL DESIGN WIND SPEED OF 117 MPH, BUILDING RISK CATEGORY 1.
2. ROOF LIVE LOAD DESIGN IS 10 PSF.
3. THE PROJECT WAS DESIGNED IN ACCORDANCE WITH THE:
A. FLORIDA BUILDING CODE 7TH EDITION (2020)
B. BUILDING CODE REQUIREMENTS FOR REINFORCED CONCRETE (ACI 318/ 2014 EDITION).
C. MANUAL OF STANDARD PRACTICE FOR WELDING REINFORCING STEEL, INSERTS & CONNECTIONS IN REINFORCED CONCRETE CONSTRUCTION, AMS, D1.4/ LATEST EDITION
D. SPECIFICATION FOR THE DESIGN, FABRICATION & ERECTION OF STRUCTURAL STEEL FOR BUILDINGS, (AMERICAN INSTITUTE OF STEEL CONSTRUCTION) AISC 15TH EDITION (ASD).
4. MATERIALS AND ASSEMBLY TEST AS FOLLOWS:
A. EXTERIOR WINDOWS, SLIDING AND PATIO GLASS DOORS SHALL BE TESTED BY AN APPROVED INDEPENDENT TESTING LABORATORY, AND SHALL BE LABELED WITH AN APPROVED LABEL IDENTIFYING THE MANUFACTURER, PERFORMANCE CHARACTERISTICS AND APPROVED PRODUCT CERTIFICATION AGENCY, TESTING LABORATORY, EVALUATION ENTITY OR FLORIDA STATE-WIDE PRODUCT APPROVAL NUMBER TO INDICATE COMPLIANCE WITH THE REQUIREMENTS OF ONE OF THE FOLLOWING SPECIFICATIONS:
ANSI/AMA/WWDA 101/1.5 2-97 OR TAS 202
B. EXTERIOR DOOR ASSEMBLIES SHALL BE TESTED FOR STRUCTURAL INTEGRITY IN ACCORDANCE WITH ASTM E330 AT A LOAD OF 1.5 TIMES THE REQUIRED DESIGN PRESSURE LOAD.
C. SECTIONAL GARAGE DOORS SHALL BE TESTED FOR DETERMINATION OF STRUCTURAL PERFORMANCE UNDER UNIFORM STATIC AIR PRESSURE DIFFERENCE IN ACCORDANCE WITH ANSI/DASMA 115 OR TAS 201.202 AND 203.
5. STEEL FRAMES SHALL BE SPACED NO MORE THAN 56" O.C. U.N.O. ON PLAN, ALL TUBE STEEL SHAPE STRENGTHS ARE 46 KSI STEEL, ALL CLIPS ARE 36 KSI STEEL.
6. STEEL WELD STRENGTH SHALL BE 55 KSI TYP. ALL WELDS SHALL BE 1/8" MINIMUM FILLET WELDS.
7. ANCHORING BUILDING:
A. BUILDING SHALL BE ATTACHED WITH HELICAL ANCHORS PER THE HELICAL ANCHOR DETAIL.
B. WHEN EMBEDDED INTO ASPHALT HELICAL ANCHORS OR 30" LONG #5 REBAR WITH A NUT WELDED TO THE TOP, SHALL BE INSTALLED AT 12" ON CENTER FROM EACH SIDE AND THE BALANCE 0.56" ON CENTER.
C. WHEN PLACED ON A 4" CONCRETE SLAB, A 1/2" EXPANSION ANCHOR WITH 2-1/2" OF EMBEDMENT SHALL BE INSTALLED 12" FROM EACH SIDE AND THE BALANCE 0.56" ON CENTER. CONCRETE SHALL BE MINIMUM COMPRESSIVE STRENGTH OF 2500 PSI AT 28 DAYS.
8. ALL STEEL-TO-STEEL FASTENERS ARE TO BE 12-14 x 1/4 HWU ULTRA-2 TCP3 CS.
9. EACH LOCATION WHERE THE FRAME IS JOINED TOGETHER WILL HAVE 2 SCREWS ON EACH SIDE OF THE JOINT.

WALL AND OPENING PRESSURES
COMPONENTS AND CLADDING (ASD)

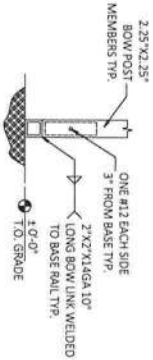
OPENING TYPE	HEIGHT	WIDTH	CODE
WINDOW	38.375"	37"	23
DOOR	96"	36"	S-750
DOOR	96"	72"	S-750
DOOR	96"	104"	S-750
DOOR	96"	120"	S-750
DOOR	96"	144"	S-3100
TYPE	MATERIAL	PRESSURE (PSF)	
SINGLE HUNG	ALUM*	+21.0 / -28.1	
SINGLE CURTAIN	STEEL	+20.1 / -26.3	
SINGLE CURTAIN	STEEL	+19.2 / -24.6	
SINGLE CURTAIN	STEEL	+18.6 / -23.4	
SINGLE CURTAIN	STEEL	+18.2 / -22.6	
SINGLE CURTAIN	STEEL	+18.1 / -22.2	

* PROVIDE BARRIER BETWEEN ALUMINUM AND STEEL TO PREVENT CORROSION

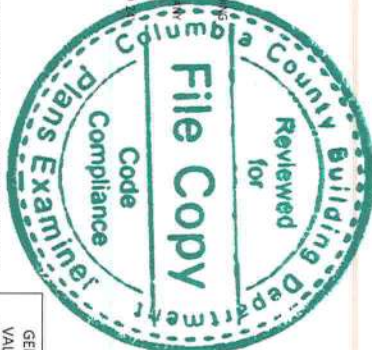
CONNECTOR SCHEDULE		
CONNECTION	Ø	LENGTH
METAL SIDING ROOF	1/4"	3/4"
METAL SIDING WALL	1/4"	3/4"
TUBE TO TUBE	1/4"	3/4"
MATERIAL		
GALV. METAL SCREW	1.5" FROM EACH CORNER, 10" O.C.	
GALV. METAL SCREW	1.5" FROM EACH CORNER, 10" O.C.	
GALV. METAL SCREW	(2) PER TUBE	



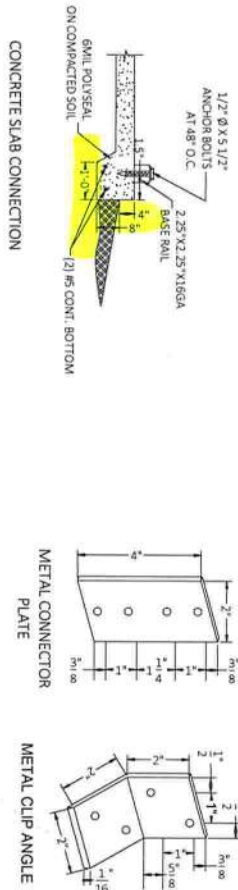
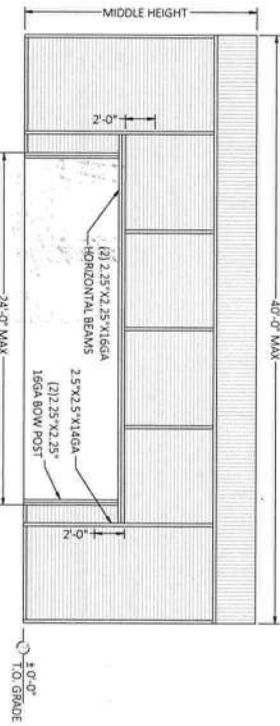
TEE SPLICE CONNECTION



- FRAMEOUT NOTES:
1. CONTRACTOR TO PROVIDE DOORS AND WINDOWS THAT ARE APPROVED BY THE BUILDING CODE AND CAPABLE OF RESISTING MINIMUM WIND DESIGN PRESSURES OF 4- 30 PSF.
2. DOORS AND WINDOWS MAY BE RELOCATED TO ANY WALL AND REPOSITIONED ALONG WALL BY THE CONTRACTOR IN FIELD.
3. FRAMEOUT HEADERS MAY BE SINGLE TS FOR UP TO 5' LENGTH AND DOUBLE TS UP TO LENGTH.
4. FRAMEOUT HEADERS INTERCEPTING LOAD-BEARING UPRIGHTS MUST BE DOUBLE TS.
5. DOOR JAMBS SUPPORTING HEADERS LOWER THAN 10' MUST BE DOUBLE TS.



GENERIC PLANS ARE NOT VALID WITHOUT A RAISED SEAL & BLUE INK SIGNATURE.



DESIGN DATE: 03/03/2023

REVISION 1: DATE

REVISION 2: DATE

SCALE: NTS

THE CARPORT COMPANY

945 NW 17TH AVE

OCALA FL 34475

PROJECT ADDRESS:

GENERIC PLANS

FLORIDA ENGINEERING LLC

4161 TAMiami TRAIL, UNIT 101

PORT CHARLOTTE, FLORIDA 33952

(941) 391-5980

FLEng.com

Orders@FLEng.com

CA CERT. #30782

PROJECT NO. 2306184

Craig E. Gunderson, P.E. #60102

DATE: 03/06/2023

1

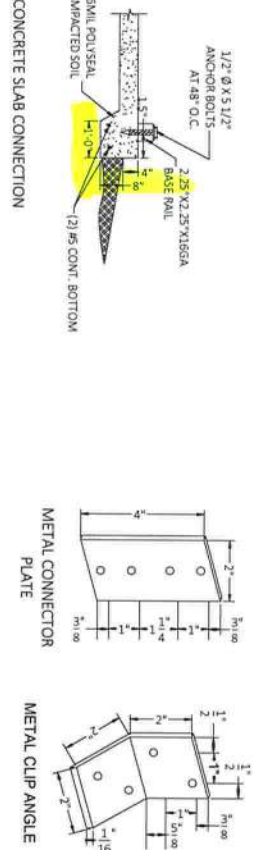
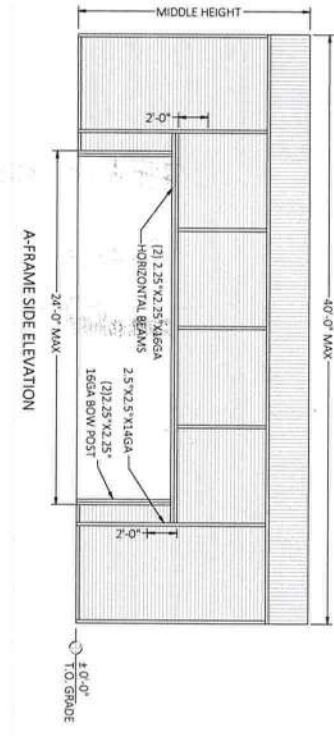
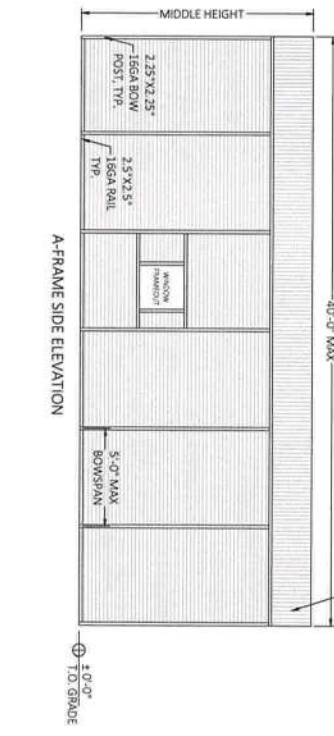
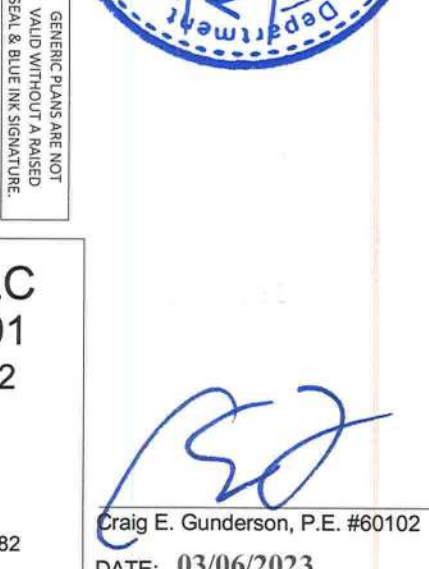
PAGE :

2

- FLORIDA ENGINEERING LLC
4161 TAMiami TRAIL, UNIT 101
PORT CHARLOTTE, FLORIDA 33952
(941) 391-5980
FLEng.com
Orders@FLEng.com
- 2306184
- CA CERT. #30782
- Craig E. Gunderson, P.E. #60782
DATE: 03/06/2023

PORT COMPANY TH AVE 34475	
PLANS	

SIGN DATE:	03/03/2023	
REVISION 1:	DATE	PAGE :
REVISION 2:	DATE	1




Craig E. Gunderson
DATE: 03/06/20

1
2
2

BOW SPLICE CONNECTION AT RIDGE

ON-STRUCTURAL HEADER OR WINDOW RAIL
TO POST CONNECTION DETAIL
SCALE: NTS

PAGE: 1