

Mark Disosway, P.E.

163 SW Midtown Place, Suite 103 Lake City, FL 32025, Ph (386) 754-5419

4/29/20

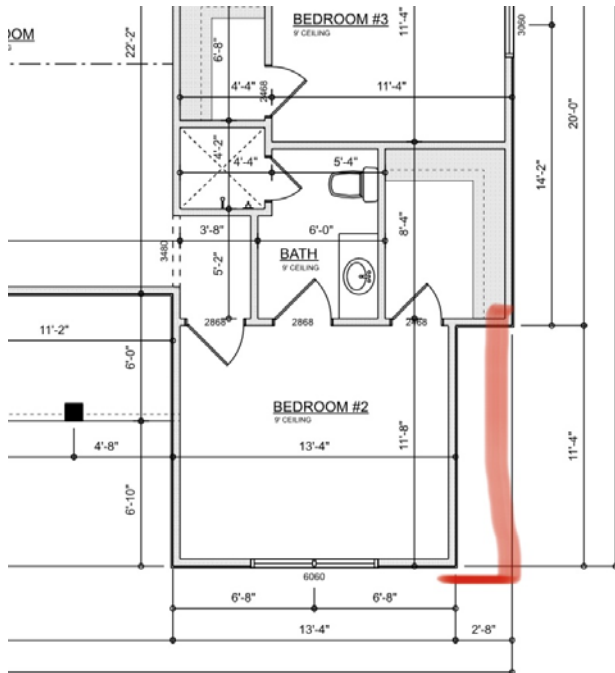
Columbia County Building Department

Re: Aaron Simque Homes / Karlton Res. / Lot 28 High Pointe Farms, Columbia County, FL

To whom it may concern:

This letter is in reference to inspection issues on the above referenced project.

1. The builder wanted to fill in the corner shown below. The builder wanted to switch to a mono footing. This is ok if the footing is min. 12" wide x 20" deep with (2) #5 rebar continuous (doweled into existing footing), run the #5 rebar in the bond beam continuous thru the mono footing area.



Mark Disosway, PE
Florida Professional Engineer #53915