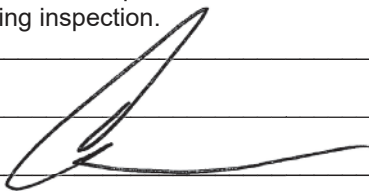


COLUMBIA COUNTY PRODUCT APPROVAL SPECIFICATION SHEET

As required by Florida Statute 553.842 and Florida Administrative Code 9B-72, please provide the information and approval numbers on the building components listed below if they will be utilized on the construction project for which you are applying for a building permit. We recommend you contact your local product supplier should you not know the product approval number for any of the applicable listed products. Statewide approved products are listed online at www.floridabuilding.org.

Category/Subcategory	Manufacturer	Product Description	Approval Number(s)
1. EXTERIOR DOORS			
A. SWINGING			
B. SLIDING			
C. SECTIONAL/ROLL UP			
D. OTHER			
2. WINDOWS			
A. SINGLE/DOUBLE HUNG	Pella	Double Hung Window	16813.2
B. HORIZONTAL SLIDER			
C. CASEMENT			
D. FIXED			
E. MULLION			
F. SKYLIGHTS			
G. OTHER			
3. PANEL WALL			
A. SIDING			
B. SOFFITS			
C. STOREFRONTS			
D. GLASS BLOCK			
E. OTHER			
4. ROOFING PRODUCTS			
A. ASPHALT SHINGLES			
B. NON-STRUCT METAL			
C. ROOFING TILES			
D. SINGLE PLY ROOF			
E. OTHER			
5. STRUCT COMPONENTS			
A. WOOD CONNECTORS			
B. WOOD ANCHORS			
C. TRUSS PLATES			
D. INSULATION FORMS			
E. LINTELS			
F. OTHERS			
6. NEW EXTERIOR			
A. ENVELOPE PRODUCTS			

The products listed below did not demonstrate product approval at plan review. I understand that at the time of inspection of these products, the following information must be available to the inspector on the jobsite; (1) copy of the product approval (2) performance characteristics which the product was tested and certified to comply with (3) copy of the applicable manufacturer's installation requirements. Further, I understand these products may have to be removed if approval cannot be demonstrated during inspection.



6/13/2023

APPLICANT SIGNATURE

DATE



[DBPR HOME](#) | [ABOUT DBPR](#) | [DBPR DIVISIONS](#) | [CONTACT DBPR](#)

[BCIS Home](#) | [Log In](#) | [User Registration](#) | [Hot Topics](#) | [Submit Surcharge](#) | [Stats & Facts](#) | [Publications](#) | [Contact Us](#) | [BCIS Site Map](#) | [Links](#) | [Search](#)



Product Approval
USER: Public User

[Product Approval Menu](#) > [Product or Application Search](#) > **Application List**

OFFICE OF THE SECRETARY

Search Criteria

[Refine Search](#)

Code Version	2020 FL#	16813
Application Type	ALL Product Manufacturer	ALL
Category	ALL Subcategory	ALL
Application Status	ALL Compliance Method	ALL
Quality Assurance Entity	ALL Quality Assurance Entity Contract Expired	ALL
Product Model, Number or Name	ALL Product Description	ALL
Approved for use in HVHZ	ALL Approved for use outside HVHZ	ALL
Impact Resistant	ALL Design Pressure	ALL
Other	ALL	

Search Results - Applications

FL#	Type	Manufacturer	Validated By	Status
FL16813-R7 History	Revision	Pella Corporation Category: Windows Subcategory: Double Hung	T.E. Lunn, PE, LLC (561) 625-6455	Approved *

*Approved by DBPR. Approvals by DBPR shall be reviewed and ratified by the POC and/or the Commission if necessary.

[Contact Us](#) :: 2601 Blair Stone Road, Tallahassee FL 32399 Phone: 850-487-1824

The State of Florida is an AA/EEO employer. [Copyright 2007-2013 State of Florida](#). :: [Privacy Statement](#) :: [Accessibility Statement](#) :: [Refund Statement](#)

Under Florida law, email addresses are public records. If you do not want your e-mail address released in response to a public-records request, do not send electronic mail to this entity. Instead, contact the office by phone or by traditional mail. If you have any questions, please contact 850.487.1395. *Pursuant to Section 455.275(1), Florida Statutes, effective October 1, 2012, licensees licensed under Chapter 455, F.S. must provide the Department with an email address if they have one. The emails provided may be used for official communication with the licensee. However email addresses are public record. If you do not wish to supply a personal address, please provide the Department with an email address which can be made available to the public. To determine if you are a licensee under Chapter 455, F.S., please click [here](#).

Product Approval Accepts:



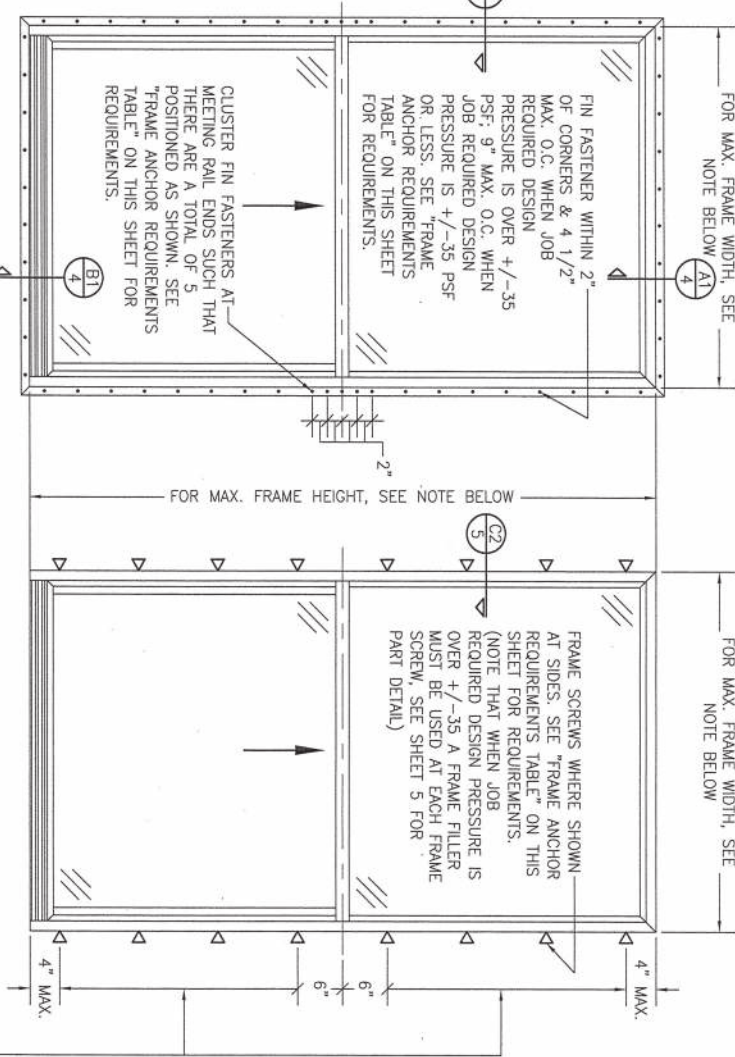
GENERAL NOTES:

1. ALL FASTENERS SHALL BE IN ACCORDANCE WITH THESE DRAWINGS, SPECIFIED ANCHOR EMBED TO BASE MATERIAL SHALL BE BEYOND WALL FINISH OR STUCCO.
2. OPENINGS, BUCKING & BUCKING FASTENERS MUST BE PROPERLY DESIGNED & INSTALLED TO TRANSFER WIND LOADS TO THE STRUCTURE.
3. THESE AND IMPACT TESTED PRODUCT INSTALLATIONS ARE IN ACCORDANCE WITH AND MEET THE REQUIREMENTS OF THE PRODUCT.
4. ALL ANCHORS SECURING PRODUCT FRAME TO BE PRESSURE TREATED BUCKS OR WOOD FRAMING SHALL BE CAPABLE OF RESISTING CORROSION CAUSED BY THE PRESSURE TREATING CHEMICALS IN THE WOOD.
5. MATERIALS, INCLUDING BUT NOT LIMITED TO STEEL SCREWS, THAT COME INTO CONTACT WITH OTHER DISSIMILAR MATERIALS SHALL MEET THE REQUIREMENTS OF FLORIDA BUILDING CODE CHAPTER 20.
6. TO THE BEST OF OUR KNOWLEDGE, THE PRODUCT SHOWN HEREIN IS CERTIFIED & QUALITY ASSURED BY A FLORIDA STATE APPROVED CERTIFICATION/QA ENTITY & SHALL BE LABELED IN ACCORDANCE WITH THE PRODUCT ASSEMBLY IS NOT PART OF THIS DRAWING AND SHALL BE IN ACCORDANCE WITH THE MANUFACTURER'S QUALITY ASSURANCE SPECIFICATIONS & TESTING REPORTS.
7. EXISTING CONDITIONS SHALL BE SHOWN AND NOTED ON THE DRAWING.
8. THE PRODUCT IS INSTALLED WITHOUT A BUILDING PERMIT FROM THE APPLICABLE LOCAL BUILDING DEPARTMENT.
9. THE PRODUCT IS INSTALLED BY ANYONE OTHER THAN A LICENSED CONTRACTOR EXPERIENCED WITH INSTALLATIONS OF THIS TYPE OF PRODUCT.
10. IF CHANGES HAVE OCCURRED TO THE PRODUCT'S CERTIFICATION ENTRY'S, CERTIFICATE THAT CAUSE THESE INSTALLATIONS TO BE INCORRECT OR INCONSISTENT WITH WHAT HAS BEEN TESTED.
11. THE LEAST DESIGN PRESSURE SPECIFIED EITHER IN THIS DRAWING OR IN THE PRODUCT'S CERTIFICATION SHALL CONTROL FOR THE INSTALLED PRODUCT.
12. THESE DRAWINGS CERTIFY THE PRODUCT INSTALLATION ONLY. WATER PROOFING OF THE INSTALLED PRODUCT IS NOT PART OF THIS INSTALLATION CERTIFICATION. THAT RESPONSIBILITY SHALL BE THAT OF THE MANUFACTURER &/OR INSTALLER.

INSTALLATION EVALUATION IS BASED ON APPLICABLE ANCHOR STANDARDS AND/OR INFORMATION & RESULTS FROM APPLICABLE TEST REPORTS. THE FLORIDA BUILDING CODE VERSIONS CONSIDERED WITH THE EVALUATION WAS THAT IN FORCE AT THE TIME OF THE EVALUATION. IN THE EVENT OF CODE VERSION CHANGES/UPDATES OR IN THE EVENT THAT NEW OR ADDITIONAL TESTING IS COMPLETED ON THE PRODUCT, THE EVALUATION REPORT WILL BE UPDATED TO REFLECT THE NEW TESTING RESULTS. THE RESULTS HEREIN ARE CURRENT WITH THE THEN CURRENT TESTING CODE AND APPLICABLE STANDARDS.

FRAME ANCHOR REQUIREMENTS TABLE

OPENING TYPE (SUBSTRATE)	FRAME/CLIP/NAIL FIN TO OPENING FASTENER TYPE	MINIMUM EMBED	MINIMUM EDGE DIST.
(1) FRAME SCREWS			
MIN. 2X4 WOOD FRAME OR BUCK (MIN. GR. 3 & G=0.55)	NO. 10 SMS OR WOOD SCREW	1 1/4"	3/4"
MIN. 18 GA. 33 KSI METAL STUD	NO. 10 GR. 5 SELF TAP/DRILL SCREW	FULL	1/2"
MIN. 1/8" THK A36 STEEL	NO. 10 GR. 5 SELF TAP/DRILL SCREW	FULL	1/2"
MIN. 1/8" THK 6063-T5 ALUM.	NO. 10 GR. 5 SELF TAP/DRILL SCREW	FULL	1/2"
MIN. C-90 CMU OR 2500 PSI CONCRETE	(2) 1/4" CONCRETE SCREW	1 1/4"	2"
(1) INSTALLATION CLIP SCREWS			
MIN. 2X4 WOOD FRAME OR BUCK (MIN. GR. 3 & G=0.55)	NO. 10 SMS SCREW	1 1/4"	1/2"
MIN. 18 GA. 33 KSI METAL STUD	NO. 10 GR. 5 SELF TAP/DRILL SCREW	FULL	1/2"
MIN. 1/8" THK A36 STEEL	NO. 10 GR. 5 SELF TAP/DRILL SCREW	FULL	1/2"
MIN. 1/8" THK 6063-T5 ALUM.	NO. 10 GR. 5 SELF TAP/DRILL SCREW	FULL	1/2"
2500 PSI CONCRETE	(2) 3/16" CONCRETE SCREW	1 1/4"	2"
(3) NAILING FIN FASTENERS			
MIN. 2X4 WOOD FRAME OR BUCK (MIN. GR. 3 & G=0.55)	NO. 8 SMS SCREW	1 3/8"	1/2"
MIN. 2X4 WOOD FRAME OR BUCK (MIN. GR. 3 & G=0.55)	11 GA. ROOFING NAIL	1 3/8"	1/2"
MIN. 1/8" THK A36 STEEL	NO. 8 GR. 5 SELF TAP/DRILL SCREW	FULL	1/2"
MIN. 1/8" THK 6063-T5 ALUM.	NO. 8 GR. 5 SELF TAP/DRILL SCREW	FULL	1/2"



EXTERIOR ELEVATION: SINGLE WINDOW

SCALE: 3/4" = 1'-0"
(NAIL FIN MOUNT CONDITION)

EXTERIOR ELEVATION: SINGLE WINDOW

SCALE: 3/4" = 1'-0"
(FRAME SCREW MOUNT CONDITION)

NOTE: FOR MAX. SINGLE WINDOW FRAME DIMENSIONS AND ALLOWABLE DESIGN PRESSURE, SEE APPLICABLE FLORIDA APPROVAL

SIDE JAMB ANCHOR SPACING TABLE	MAXIMUM FRAME WIDTH (IN.)	MAXIMUM O.C. SPACING (IN.)
	54	12
	48	13
	36	17

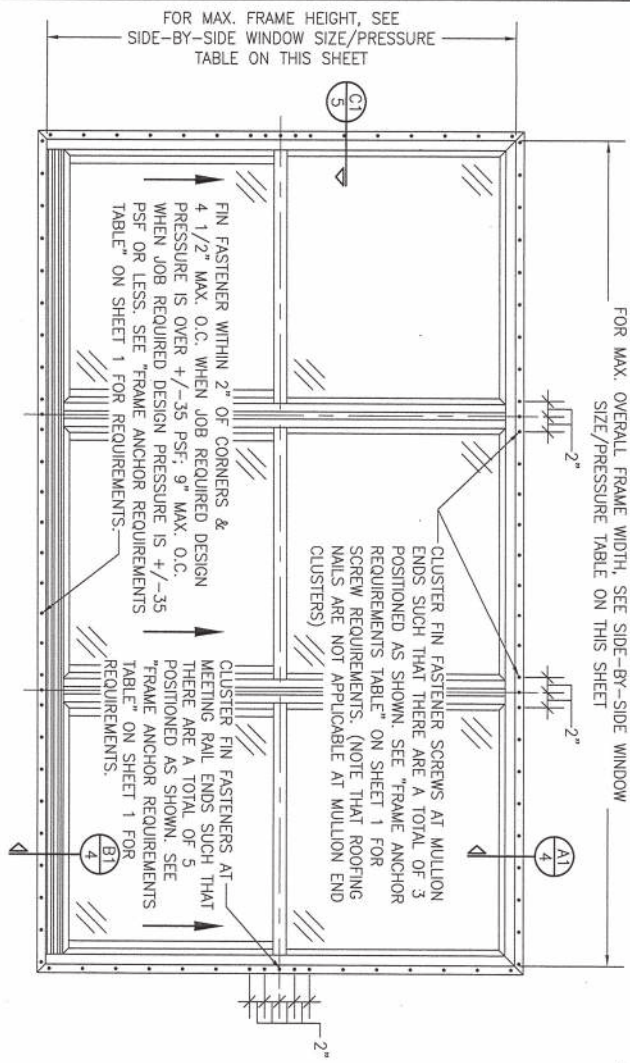
ALTERNATE ANCHOR/SUBSTRATE EVALUATION NOTE:
ALL ALTERNATE ANCHORS IN THEIR SPECIFIED SUBSTRATES HAVE BEEN ANALYZED IN ACCORDANCE WITH THEIR APPLICABLE STANDARDS AND ARE FOUND TO BE EQUIVALENT TO OR STRONGER THAN THE ANCHOR(S) USED IN TESTING WITH THIS PRODUCT.

THESE DRAWINGS ARE APPLICABLE ONLY TO THE PRODUCT SPECIFIED. THEY MAY NOT BE USED FOR THE ASSEMBLY AND/OR INSTALLATION OF ANY OTHER PRODUCT NOR MAY THEY BE USED FOR RATIONAL AND/OR LOCAL APPROVAL STATED ON THESE DRAWINGS.

DRAWING NO. 1867 SHEET NO. 1 OF 5	DATE: 03/09/16 DATE: 11/02/20	NO. 1 REVISION DESCRIPTION: UPDATE FOR NEW TESTING BY: W.W.S. DATE: 03/09/16
		NO. 2 REVISION DESCRIPTION: ADDED 108 X 72 WINDOW BY: W.W.S. DATE: 11/02/20
DRAWING TITLE: 250 SERIES VINYL SINGLE HUNG NON-IMPACT WINDOW		CONSULTANTS: W. W. SCHAEFER ENGINEERING & CONSULTING, P.A. (CA 6809) 7480 150TH COURT NORTH PALM BEACH GARDENS, FL 33418 PHONE: 561-744-3424
MANUFACTURER: Pella PELLA CORPORATION 102 MAIN STREET PELLA, IA 50219 641-621-1000		CHECKED BY: W.W.S. DATE: 03/09/16



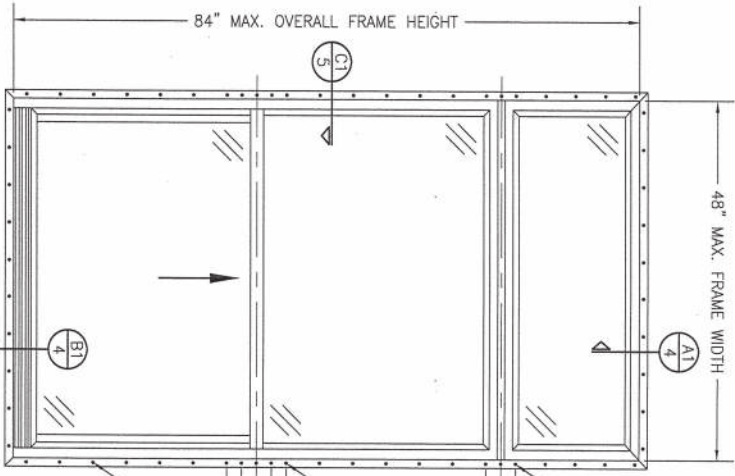
CERTIFICATION
 NOV 02 2020
 WARREN W. SCHAEFER, P.E.
 P.E. NO. 44135



**EXTERIOR ELEVATION:
SIDE-BY-SIDE WINDOW**
SCALE: 3/4" = 1'-0"
(NAIL FIN MOUNT CONDITION)

ALLOWABLE SIDE-BY-SIDE WINDOW SIZE/PRESSURE TABLE		
MAXIMUM OVERALL FRAME WIDTH DIMENSION (IN.)	MAXIMUM FRAME HEIGHT DIMENSION (IN.)	ALLOWABLE PRESSURE (+/- PSF)
TRIPLE WINDOW		
109	63	35
109	72	30
DOUBLE WINDOW		
96	72	35
72	65 1/2	50

PRESSURES & CONDITIONS SHOWN IN THIS DRAWING ARE GOVERNED BY INSTALLATION REQUIREMENTS ONLY. THE GOVERNING CONDITIONS ON ANY SPECIFIC PRODUCT SHALL BE THE LESSER OF THOSE SPECIFIED IN THE PRODUCTS STATE APPROVAL OR THAT SHOWN IN THESE DRAWINGS.



**EXTERIOR ELEVATION:
SINGLE WINDOW WITH TRANSONM**
SCALE: 3/4" = 1'-0"
(NAIL FIN MOUNT CONDITION)

ALLOWABLE DESIGN PRESSURE (TRANSOM UNITS ONLY)
+/-35 PSF

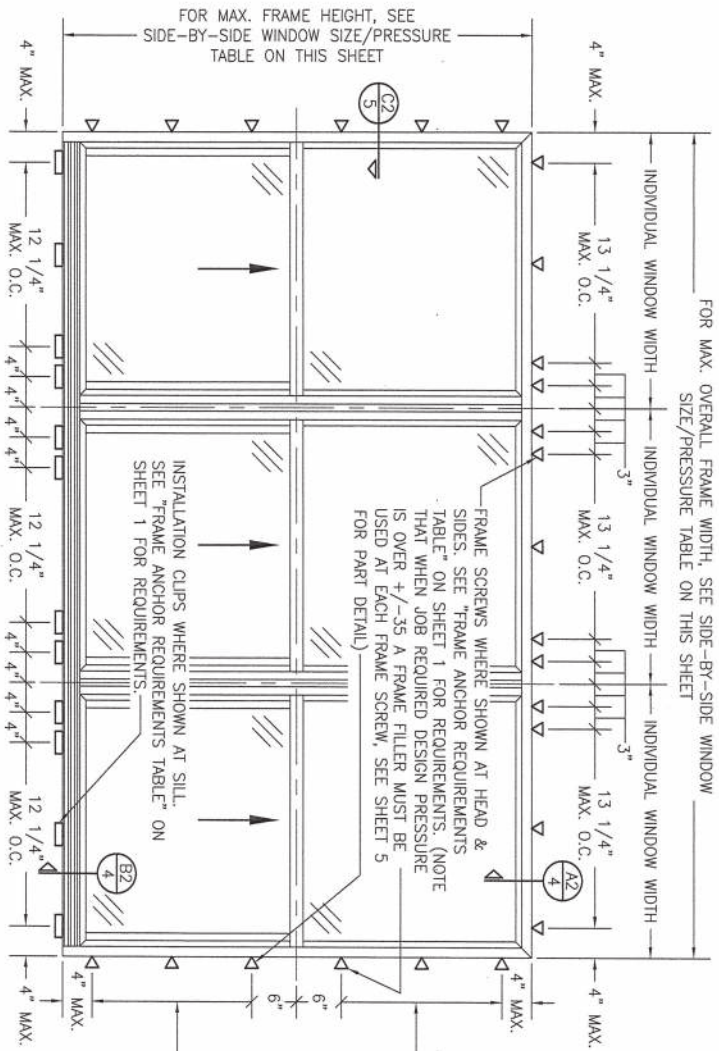
CLUSTER FIN FASTENER SCREWS AT MULLION ENDS SUCH THAT THERE ARE A TOTAL OF 3 POSITIONED AS SHOWN. SEE "FRAME ANCHOR REQUIREMENTS TABLE" ON SHEET 1 FOR SCREW REQUIREMENTS. (NOTE THAT ROOFING NAILS ARE NOT APPLICABLE AT MULLION END CLUSTERS)

CLUSTER FIN FASTENERS AT MEETING RAIL ENDS SUCH THAT THERE ARE A TOTAL OF 5 POSITIONED AS SHOWN. SEE "FRAME ANCHOR REQUIREMENTS TABLE" ON SHEET 1 FOR REQUIREMENTS.

FIN FASTENER WITHIN 2" OF CORNERS & 9" MAX. O.C. SEE "FRAME ANCHOR REQUIREMENTS TABLE" ON SHEET 1 FOR REQUIREMENTS.



DRAWING NO. 1867 SHEET NO. 2 OF 5	CERTIFICATION NOV 02 2020	DRAWING TITLE 250 SERIES VINYL SINGLE HUNG NON-IMPACT WINDOW	CONSULTANTS W. W. SCHAEFER ENGINEERING & CONSULTING, P.A. (CA 6809) 7480 150TH COURT NORTH PALM BEACH GARDENS, FL 33418 PHONE: 561-744-3424	MANUFACTURER PELLA CORPORATION 102 MAIN STREET PELLA, IA 50219 641-621-1000	REVISIONS <table border="1"> <thead> <tr> <th>NO.</th> <th>REVISION DESCRIPTION</th> <th>BY</th> <th>DATE</th> </tr> </thead> <tbody> <tr> <td> </td> <td> </td> <td> </td> <td> </td> </tr> </tbody> </table>	NO.	REVISION DESCRIPTION	BY	DATE					DESIGNER: BR DATE: 02/05/14 CHECKER: BR DATE: 02/05/14
	NO.	REVISION DESCRIPTION	BY	DATE										
WARREN W. SCHAEFER, P.E. P.E. NO. 44135	NOV 02 2020	W. W. SCHAEFER ENGINEERING & CONSULTING, P.A. (CA 6809)	PELLA CORPORATION	PELLA CORPORATION	PELLA CORPORATION	PELLA CORPORATION								



FOR MAX. OVERALL FRAME WIDTH, SEE SIDE-BY-SIDE WINDOW SIZE/PRESSURE TABLE ON THIS SHEET

FOR MAX. FRAME WIDTH, SEE SIDE-BY-SIDE WINDOW SIZE/PRESSURE TABLE ON THIS SHEET

**EXTERIOR ELEVATION:
SIDE-BY-SIDE WINDOW**

SCALE: 3/4" = 1'-0"

(FRAME SCREW AND CLIP MOUNT CONDITION)

**EXTERIOR ELEVATION:
SINGLE WINDOW WITH TRANSOM**

SCALE: 3/4" = 1'-0"

(FRAME SCREW MOUNT CONDITION)

ALLOWABLE SIDE-BY-SIDE WINDOW SIZE/PRESSURE TABLE

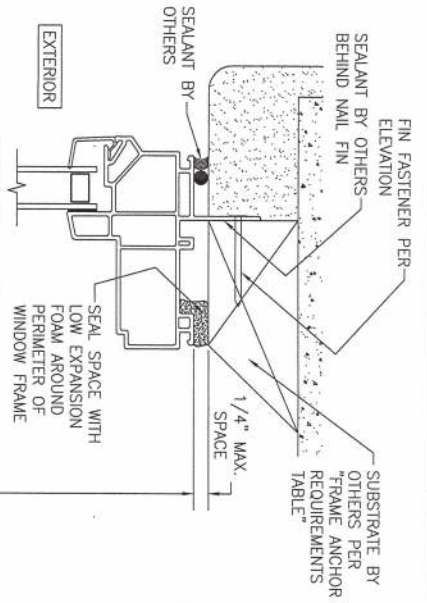
MAXIMUM OVERALL FRAME WIDTH DIMENSION (IN.)	MAXIMUM FRAME HEIGHT DIMENSION (IN.)	ALLOWABLE PRESSURE (+/- PSF)
TRIPLE WINDOW		
109	63	35
109	72	30
DOUBLE WINDOW		
96	72	35
72	65 1/2	50

SIDE JAMB ANCHOR SPACING TABLE	
MAXIMUM INDIVIDUAL WINDOW WIDTH (IN.)	MAXIMUM O.C. SPACING (IN.)
48	13
36	17

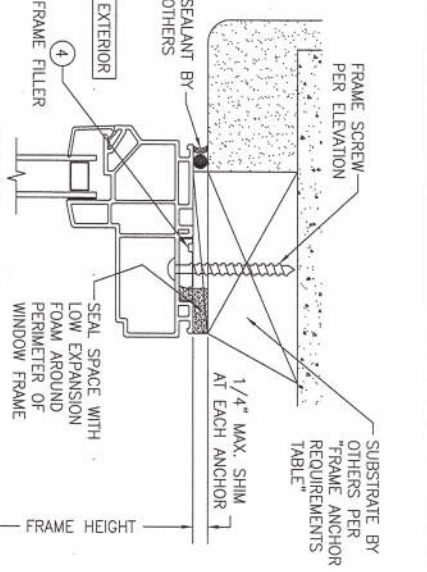
PRESSURES & CONDITIONS SHOWN IN THIS DRAWING ARE GOVERNED BY INSTALLATION REQUIREMENTS ONLY. THE COVERING CONDITIONS ON ANY SPECIFIC PRODUCT SHALL BE THE LESSER OF THOSE SPECIFIED IN THE PRODUCTS STATE APPROVAL OR THAT SHOWN IN THESE DRAWINGS.



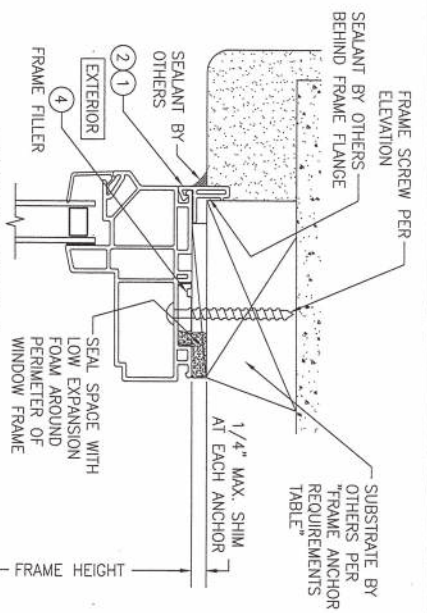
DRAWING NO. 1867 SHEET NO. 3 OF 5	DATE NOV 02 2020 REV. B	CERTIFICATION WARREN W. SCHAEFER, P.E. P.E. NO. 44135	DRAWING TITLE 250 SERIES VINYL SINGLE HUNG NON-IMPACT WINDOW	CONSULTANTS W. W. SCHAEFER ENGINEERING & CONSULTING, P.A. (CA 6809) 7480 150TH COURT NORTH PALM BEACH GARDENS, FL 33418 PHONE: 561-744-3424	MANUFACTURER PELLA CORPORATION 102 MAIN STREET PELLA, IA 50219 641-621-1000	NO.	REVISION DESCRIPTION	BY	DATE	DRAWN BY W.W.S.	CHECKED BY W.W.S.
						1-18	02/02/14	02/02/14	02/02/14		



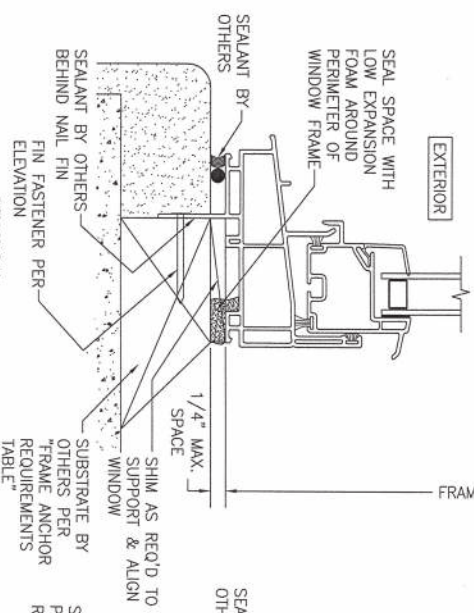
SECTION A1
SCALE: 3/4 FULL
(NAIL FIN MOUNT)



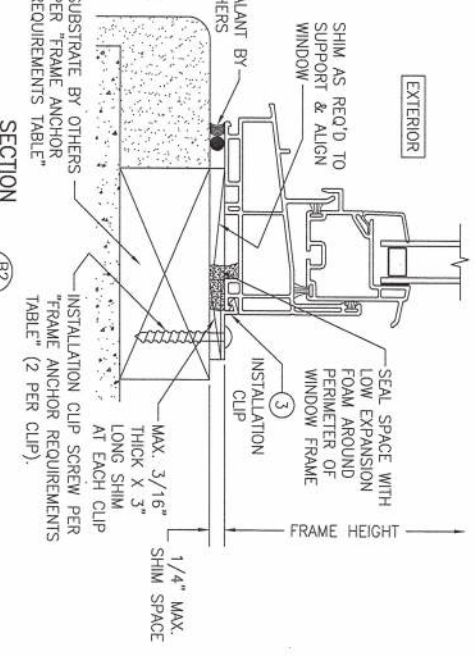
SECTION A2
SCALE: 3/4 FULL
(FRAME SCREW MOUNT CONDITION)



ALTERNATE SECTION A2
SCALE: 1/2 FULL
(FRAME SCREW MOUNT CONDITION WITH FLANGE)



SECTION B1
SCALE: 3/4 FULL
(NAIL FIN MOUNT)



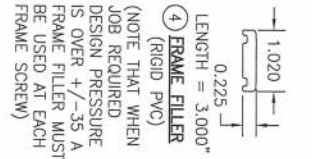
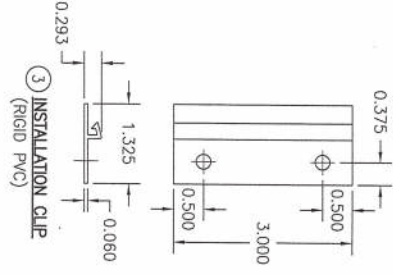
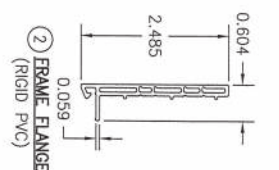
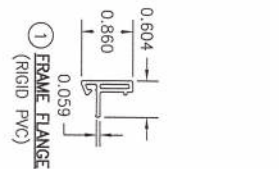
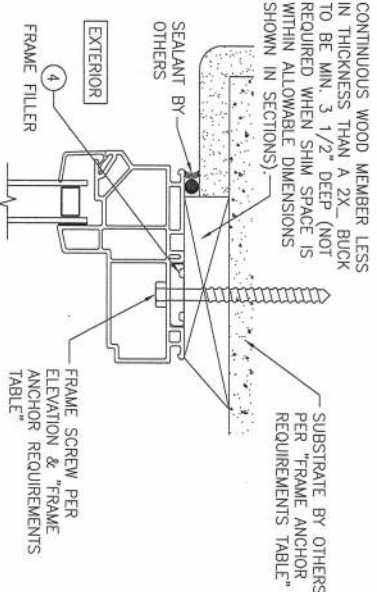
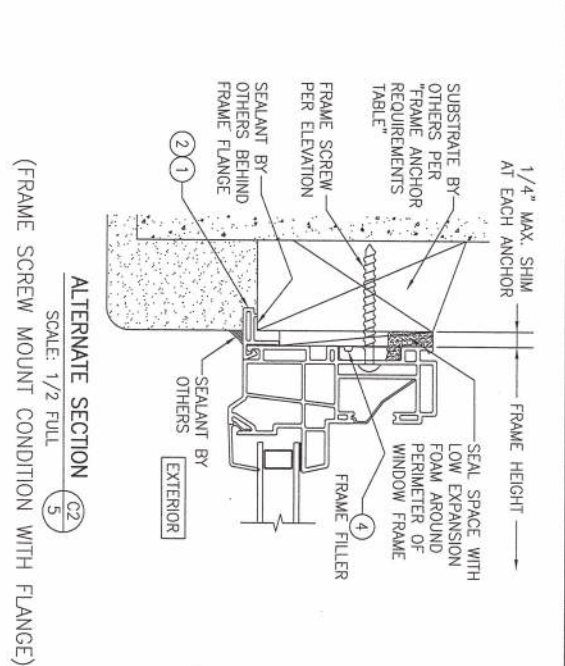
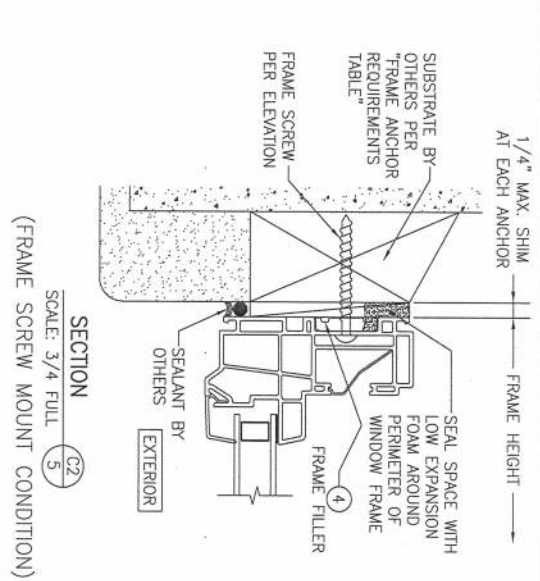
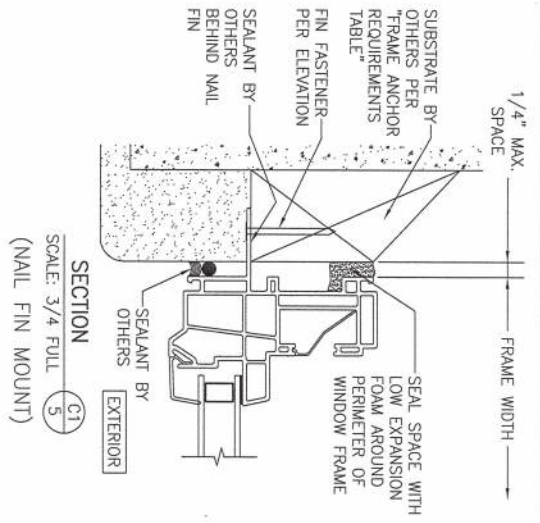
SECTION B2
SCALE: 3/4 FULL
(INSTALLATION CLIP MOUNT CONDITION)

WARREN W. SCHAEFER
LICENSE
No. 44135
STATE OF FLORIDA
PROFESSIONAL ENGINEER
CERTIFICATION
NOV 02 2020
WARREN W. SCHAEFER, P.E.
P.E. NO. 44135

DRAWING NO.	1867
REV.	B
SHEET NO.	4 OF 5

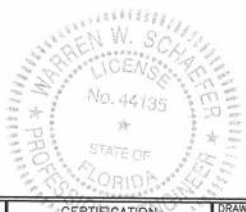
DRAWING TITLE 250 SERIES VINYL SINGLE HUNG NON-IMPACT WINDOW	
CONSULTANTS W. W. SCHAEFER ENGINEERING & CONSULTING, P.A. (CA 6809) 7480 150TH COURT NORTH PALM BEACH GARDENS, FL 33418 PHONE: 561-744-3424	MANUFACTURER Pella PELLA CORPORATION 102 MAIN STREET PELLA, IA 50219 641-621-1000

NO.	REVISION DESCRIPTION	BY	DATE
1-2			



CONTINUOUS WOOD MEMBER LESS IN THICKNESS THAN A 2X. BUCK TO BE MIN. 3 1/2\"/>

OPTIONAL DIRECT MOUNT DETAIL TO SUBSTRATE WITH SPACER
 (HEAD SECTION SHOWN; SIDES ARE INSTALLED THE SAME)
 (DIRECT MOUNT CONDITION IS NOT APPLICABLE AT SILL)
 (FOR DETAIL NOT SHOWN, SEE OTHER SECTIONS)



DRAWING NO. 1867 REV. B	SHEET NO. 5 OF 5	DATE NOV 02 2020	DRAWING TITLE 250 SERIES VINYL SINGLE HUNG NON-IMPACT WINDOW	NO.	REVISION	DESCRIPTION	BY	DATE
CONSULTANTS WARREN W. SCHAEFER ENGINEERING & CONSULTING, P.A. (CA 6809) 7480 150TH COURT NORTH PALM BEACH GARDENS, FL 33418 PHONE: 561-744-3424				MANUFACTURER PELLA CORPORATION 102 MAIN STREET PELLA, IA 50219 641-621-1000				
CERTIFICATION WARREN W. SCHAEFER, P.E. P.E. NO. 44135				CHECKED BY DATE: 02/05/14				