

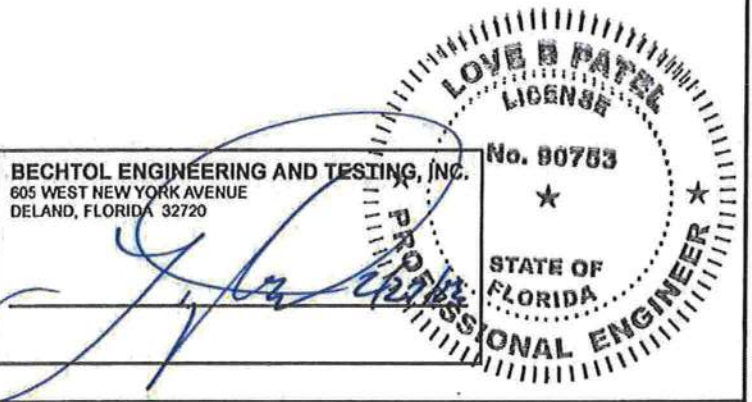
FBC APPROVED PRODUCTS LIST					MAXIMUM ALLOWABLE WIND SPEED			TABLE 1 RAFTER FRAME, END POST, GROUND ANCHOR AND PANEL FASTENER SPACING SPECIFICATIONS						
PRODUCT CATEGORY	SUB CATEGORY	MANUFACTURER	APPROVAL No. & DATE	QA EXPIRATION DATE	OPEN	ENCLOSED	PARTIALLY ENCLOSED	RISK CATEGORY	WIND EXPOSURE CATEGORY	ULTIMATE WIND SPEED (MPH)	NOMINAL WIND SPEED (MPH)	MAXIMUM POST / RAFTER SPACING (FEET)	AVERAGE FASTENER SPACING ON-CENTERS ALONG RAFTERS OR PURLINS, AND POSTS OR GIRTS (INCHES)	
													INTERIOR POSTS/RAFTERS	END POSTS/RAFTERS
STRUCTURAL COMPONENTS	ROOF DECK	CAROLINA CARPORTS, INC. 26 Gauge AG Panel	FL6596.1-R6 12/15/20	04/05/27	180	180	180						I	C
STRUCTURAL COMPONENTS	STRUCTURAL WALL	CAROLINA CARPORTS, INC. 26 Gauge AG Panel	FL6702.1-R6 12/15/20	03/14/27	180	180	180	151 TO 180	117 TO 139	4.0	6	6		
STRUCTURAL COMPONENTS	STRUCTURAL WALL	CAROLINA CARPORTS, INC. 26 Gauge Dutch Lap Wall Panel	FL6702.3-R6 12/15/20 **	03/14/27	N/A	164	143							
STRUCTURAL COMPONENTS	FLOOD VENT	CRAWL SPACE DOOR SYSTEMS, INC. 16x8 Flood Vent	FL29622.1-R1 02/28/21	09/30/22	N/A	N/A	N/A	NOTES: 1. Specifications applicable to 26 gauge metal roof and wall panels fastened directly to 12 or 14 gauge steel tube framing, or 18 gauge hat channel roof purlins. 2. Specifications applicable only for mean roof height of 20 feet or less, and roof slopes of 7° to 27° (1.5:12 to 6:12 pitch). Spacing requirements for other roof heights and/or slopes may vary.						
EXTERIOR DOORS	SWINGING	ELIXIR DOOR AND METAL COMPANY Series 402-14	FL17996.3-R2 02/28/21	08/26/25	N/A	139	139	GROUND ANCHOR SCHEDULE						
EXTERIOR DOORS	SWINGING	ELIXIR DOOR AND METAL COMPANY Series 407	FL17996.5-R2 02/28/21	08/19/25	N/A	174	155							
EXTERIOR DOORS	ROLL-UP	ASTA INDUSTRIES INC. Model 203 (12' Max. Width)	FL8888.1-R6 02/09/21	12/31/23	N/A	180	174							
EXTERIOR DOORS	ROLL-UP	CAROLINA CARPORTS, INC. Steel Roll Up Sheet Door (12' Max. Width)	FL16806.1-R5 12/16/20	04/05/27	N/A	179	154	METAL CARPORT INSTALLATION PLANS AND DETAILS AND FRAMING AND FASTENER SPECIFICATIONS						
EXTERIOR DOORS	ROLL-UP	CAROLINA CARPORTS, INC. Steel Roll-Up Sheet Door - (8' Max. Width)	FL16806.2-R5 12/16/20	04/05/27	N/A	180	180							
EXTERIOR DOORS	ROLL-UP	CAROLINA CARPORTS, INC. Steel Roll-Up Sheet Door - (16' Max. Width)	FL16806.3-R5 12/16/20	04/05/27	N/A	155	133							
EXTERIOR DOORS	ROLL-UP	CAROLINA CARPORTS, INC. Steel Roll-Up Sheet Door - (10' Max. Width)	FL16806.4-R5 12/16/20	04/05/27	N/A	180	172							
WINDOWS	SINGLE HUNG	PGT INDUSTRIES Model SH7700	FL239.4-R28 11/11/20	10/17/23	N/A	180	178							
								DETAILS 1C AND 1D SHOWN ON SHEET 4 OF 6						

NOTES:
1. DOORS AND WINDOWS SHOWN MAY BE SUBSTITUTED FOR DIFFERENT PRODUCT LINES AND/OR MODELS, PROVIDED THE FOLLOWING CONDITIONS ARE MET:
A. PRODUCT SHALL HAVE A VALID FBC PRODUCT APPROVAL.
B. COMPONENTS ARE INSTALLED ACCORDING TO MANUFACTURER'S INSTALLATION REQUIREMENTS.
2. FRAMING CONNECTIONS FOR DOOR AND WINDOW FRAMES REMAIN THE SAME FOR SUBSTITUTED PRODUCTS. HEADERS AND WINDOW RAILS MAY BE RAISED OR LOWERED AS NECESSARY TO ACCOMMODATE SUBSTITUTED PRODUCT.

GENERAL NOTES:

- THESE PLANS PERTAIN ONLY TO THE STRUCTURE, INCLUDING MAIN WIND FORCE RESISTING SYSTEM, COMPONENTS AND CLADDING, AND BASE RAIL ANCHORAGE. OTHER DESIGN ISSUES, INCLUDING BUT NOT LIMITED TO PLUMBING, ELECTRICAL, INGRESS/EGRESS, PROPERTY SET-BACKS, FINISH FLOOR ELEVATION AND SLOPE, OR OTHER LOCAL ZONING REQUIREMENTS ARE THE RESPONSIBILITY OF OTHERS.
- THESE STRUCTURES ARE DESIGNED AS NON-HABITABLE UTILITY/STORAGE BUILDINGS (RISK CATEGORY I) CAPABLE OF SUPPORTING DEAD LOAD OF THE STRUCTURE AND APPLICABLE LIVE AND WIND LOADS. IMPROVEMENTS NOT SPECIFICALLY ADDRESSED HEREIN, INCLUDING DOORS, WINDOWS, OR OTHER COMPONENTS NOT LISTED IN THE FBC APPROVED PRODUCTS LIST (THIS SHEET), AND NOT PROVIDED AND INSTALLED BY CAROLINA CARPORTS, INC., WHICH EXERT ADDITIONAL LOADS ON THE STRUCTURE SHALL BE AT THE OWNER'S RISK. BECHTOL ENGINEERING AND TESTING, INC., SHALL NOT BE RESPONSIBLE FOR STRUCTURAL DAMAGE OR FAILURE DUE TO THE APPLICATION OF ADDITIONAL LOADS.
- ALL STEEL TUBING SHALL BE 50 KSI GALVANIZED STEEL. ALL FASTENERS SHALL BE GALVANIZED OR STAINLESS STEEL OR ZINC PLATED.
- ALL COMPONENTS AND CLADDING SHALL BE INSTALLED ACCORDING TO MANUFACTURER'S INSTALLATION INSTRUCTIONS, AND SHALL MEET THE DESIGN PRESSURES REQUIRED BY THE FLORIDA BUILDING CODE (FBC) AT THE LOCATION OF THE BUILDING WITHIN THE STATE OF FLORIDA.
- ALL FIELD FRAMING CONNECTIONS SHALL BE #12-14 x 3/4" SELF DRILLING SCREWS WITHOUT CONTROL SEAL WASHER. ALL SHOP FRAMING CONNECTIONS SHALL BE WELDED.
- CONCRETE SHALL HAVE A MINIMUM COMPRESSIVE STRENGTH OF 2500 PSI AT 28 DAYS. THE REINFORCING STEEL SHALL BE MINIMUM GRADE 40. CONCRETE SLAB FOUNDATIONS SHALL BE REINFORCED WITH 6X6-W1.4XW1.4 WELDED WIRE FABRIC COMPLYING WITH ASTM A 185, OR WITH SYNTHETIC FIBER REINFORCEMENT COMPLYING WITH ASTM C1116.
- BASE RAIL GROUND ANCHOR REQUIREMENTS: ONE WITHIN 6" OF EVERY POST LOCATION, AND BOTH SIDES OF OPENINGS WHERE BASE RAIL IS ABSENT. GROUND ANCHORS ARE NOT REQUIRED FOR CONCRETE FOOTING AND/OR CONCRETE SLAB CONSTRUCTION. SEE GROUND ANCHOR SCHEDULE (THIS SHEET) FOR SPECIFIC TYPE GROUND ANCHOR REQUIREMENTS.
- CONCRETE ANCHORS SHALL BE TAPCON REDHEAD LDT 1/2" x 5" OR EQUIVALENT OR WEJ-IT ANKR-TITE MODEL AT1252, OR SLEEVE ANCHOR MODEL HSA 1260, OR EQUIVALENT.
- POST/RAFTER BRACING: BRACE ON EVERY POST/RAFTER CONNECTION, EXCEPT FOR END WALLS.
- SLAB FOUNDATION SUBGRADE SOILS SHALL BE TERMITE TREATED AND COVERED WITH 6 MIL VAPOR RETARDER PER SECTION R318.1 OF THE FBC SEVENTH EDITION (2020) - RESIDENTIAL, AND SECTION 1816.1 OF THE FBC SEVENTH EDITION (2020) - BUILDING. MINIMUM ALLOWABLE FOUNDATION SOIL CONTACT BEARING PRESSURE OF 2,000 PSF IS ASSUMED.
- 14 GA FRAMING: 2-1/2" x 2-1/2" TUBE STEEL (TS) WITH 2-1/4" x 2-1/4" TS NIPPLES.
12 GA FRAMING: 2-1/4" x 2-1/4" TS WITH 2" x 2" TS NIPPLES.
- ENCLOSED AREAS REQUIRING FLOOD OPENINGS MUST HAVE A MINIMUM OF TWO (2) OPENINGS ON EXTERIOR WALLS. OPENINGS SHOULD BE INSTALLED ON AT LEAST TWO (2) SIDES OF ENCLOSED AREA, WITH BASE OF OPENINGS SET WITHIN 1-FOOT OF THE HIGHER OF INTERIOR OR EXTERIOR GRADE. REQUIRED TOTAL NUMBER OF FLOOD VENTS NOTED IN THE FBC APPROVED PRODUCTS LIST SHALL BE BASED ON ONE (1) FLOOD VENT PER EVERY 305 SQUARE FEET OF ENCLOSED AREA. SEE TYPICAL FLOOD VENT FRAMING PLAN, SHEET 5 OF 6.

THIS IS TO CERTIFY THAT THE CALCULATIONS AND SPECIFICATIONS HEREIN HAVE BEEN PREPARED BY THE UNDERSIGNED PROFESSIONAL ENGINEER, AND ARE IN ACCORDANCE WITH THE REQUIREMENTS OF SECTION 1609 OF THE FLORIDA BUILDING CODE, SEVENTH EDITION (2020).

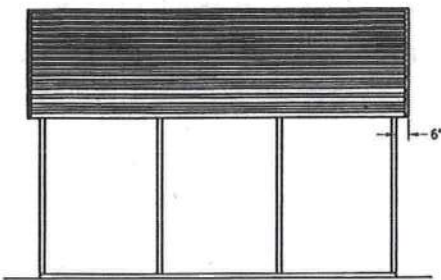


CAROLINA CARPORTS, INC.
GENERIC PLANS FOR USE IN THE STATE OF FLORIDA

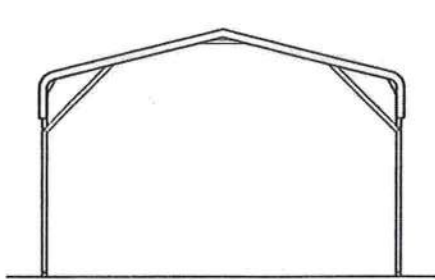
BECHTOL ENGINEERING AND TESTING, INC.
CONSULTING GEOTECHNICAL, ENVIRONMENTAL, AND MATERIALS TESTING ENGINEERS
Certificate of Authorization No. 00005492

FIELD	DATE	2/21/2023
DESIGN	MKB	SCALE NTS
CHECKED	TB/CS	PROJECT NO. G23001
APPROVED	TB/LP	SHEET 1 OF 6

BOW FRAME RAFTER OPEN CARPORT - HORIZONTAL ROOF

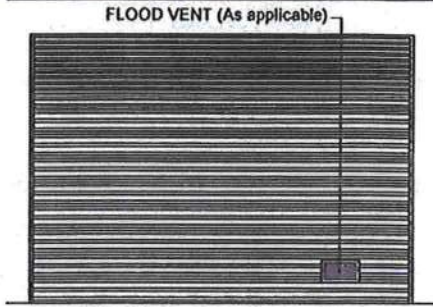


TYPICAL SIDE ELEVATION
NOT TO SCALE

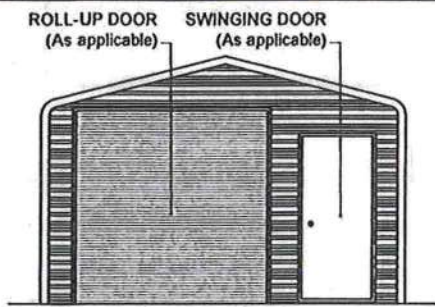


TYPICAL END ELEVATION
NOT TO SCALE

BOW FRAME RAFTER ENCLOSED BUILDING - HORIZONTAL ROOF

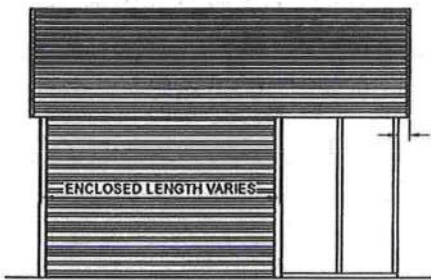


TYPICAL SIDE ELEVATION
NOT TO SCALE

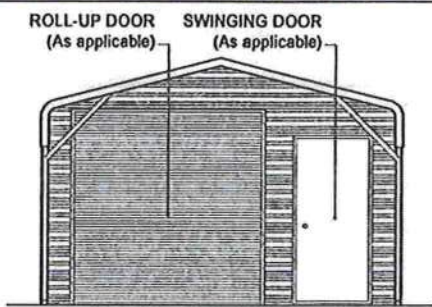


TYPICAL END ELEVATION
NOT TO SCALE

BOW FRAME RAFTER UTILITY BUILDING - HORIZONTAL ROOF

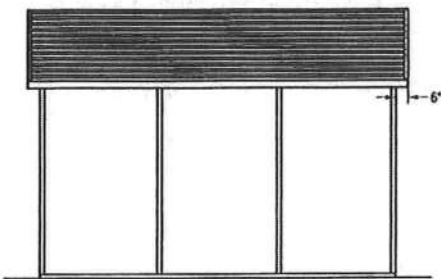


TYPICAL SIDE ELEVATION
NOT TO SCALE

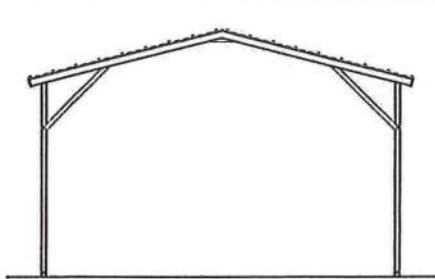


TYPICAL END ELEVATION
NOT TO SCALE

BOX EAVE FRAME RAFTER OPEN CARPORT - HORIZONTAL ROOF

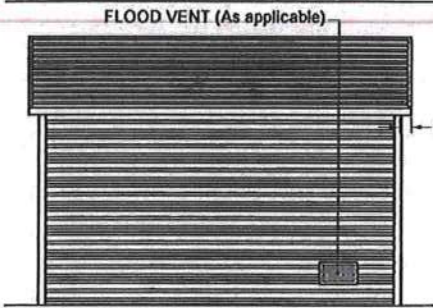


TYPICAL SIDE ELEVATION
NOT TO SCALE

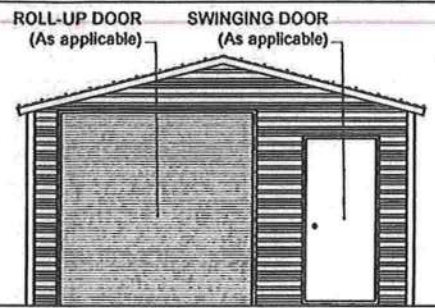


TYPICAL END ELEVATION
NOT TO SCALE

BOX EAVE FRAME RAFTER ENCLOSED BLDG - HORIZONTAL ROOF

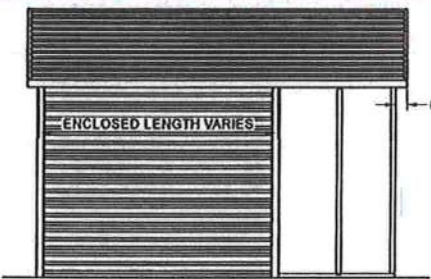


TYPICAL SIDE ELEVATION
NOT TO SCALE

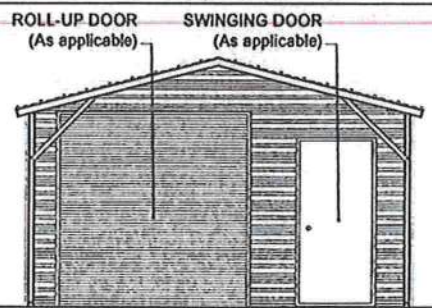


TYPICAL END ELEVATION
NOT TO SCALE

BOX EAVE FRAME RAFTER UTILITY BLDG - HORIZONTAL ROOF

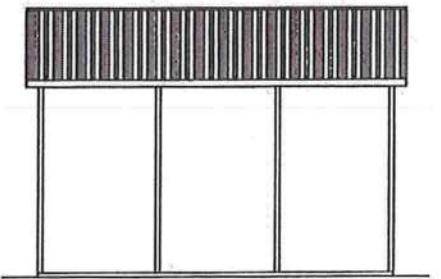


TYPICAL SIDE ELEVATION
NOT TO SCALE

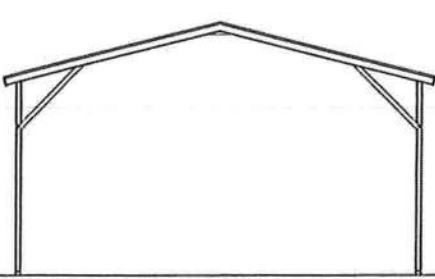


TYPICAL END ELEVATION
NOT TO SCALE

BOX EAVE FRAME RAFTER OPEN CARPORT - VERTICAL ROOF

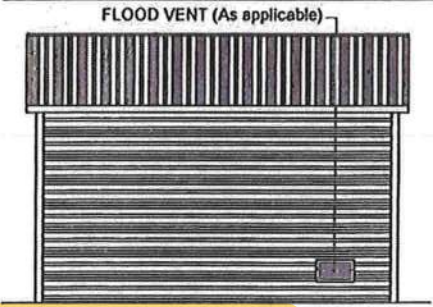


TYPICAL SIDE ELEVATION
NOT TO SCALE

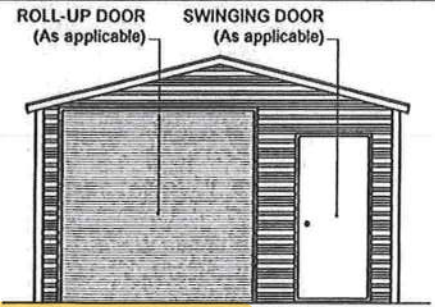


TYPICAL END ELEVATION
NOT TO SCALE

BOX EAVE FRAME RAFTER ENCLOSED BLDG - VERTICAL ROOF

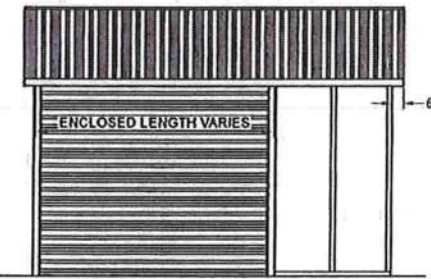


TYPICAL SIDE ELEVATION
NOT TO SCALE

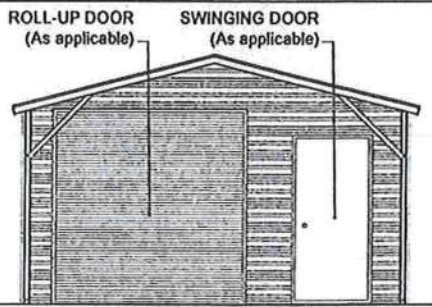


TYPICAL END ELEVATION
NOT TO SCALE

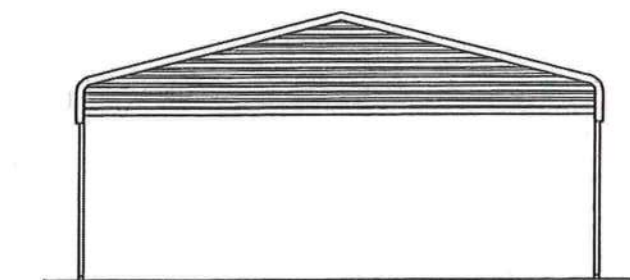
BOX EAVE FRAME RAFTER UTILITY BLDG - VERTICAL ROOF



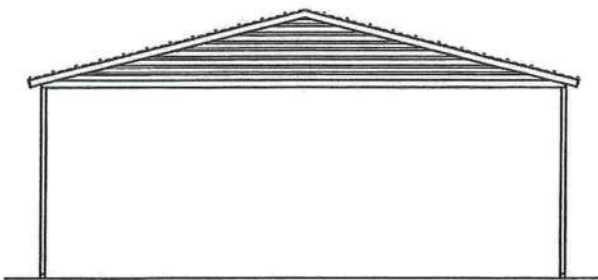
TYPICAL SIDE ELEVATION
NOT TO SCALE



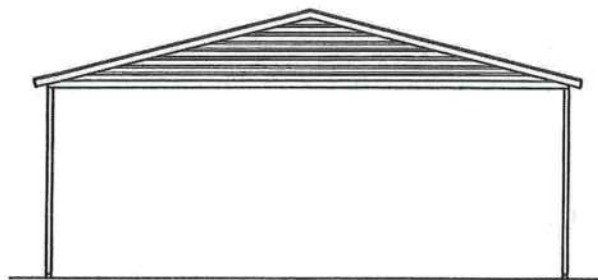
TYPICAL END ELEVATION
NOT TO SCALE



TYPICAL BOW RAFTER GABLE END ELEVATION
NOT TO SCALE



TYPICAL BOX EAVE RAFTER GABLE END ELEVATION
NOT TO SCALE



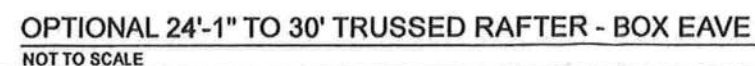
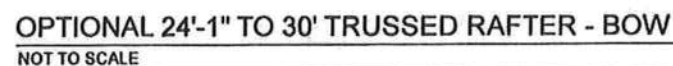
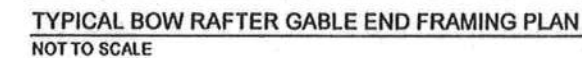
TYPICAL BOX EAVE RAFTER GABLE END ELEVATION
NOT TO SCALE

BECHTOL ENGINEERING AND TESTING INC.
605 WEST NEW YORK AVENUE
DELAND, FLORIDA 32720

CAROLINA CARPORTS, INC.
GENERIC PLANS FOR USE IN THE STATE OF FLORIDA

BECHTOL ENGINEERING AND TESTING, Inc.
CONSULTING GEOTECHNICAL, ENVIRONMENTAL, AND MATERIALS TESTING ENGINEERS
Certificate of Authorization No. 00056492

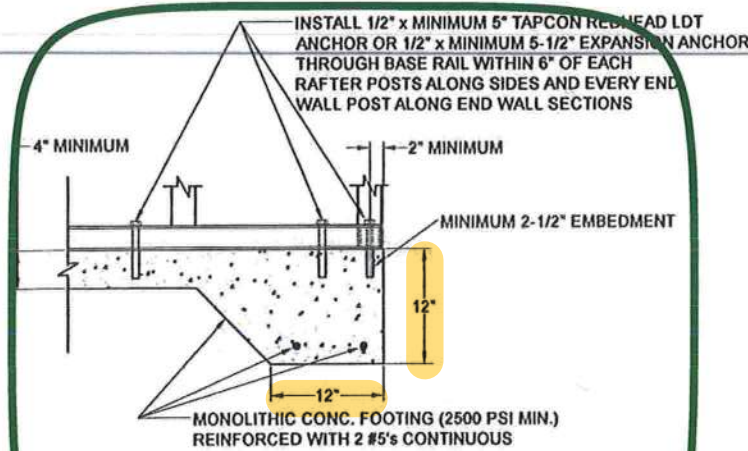
FIELD	DATE
2/21/2023	
DRAWN	SCALE
MKB	NTS
CHECKED	PROJECT NO.
TB/CS	G23001
APPROVED	SHEET 2 OF 6
TB/LP	



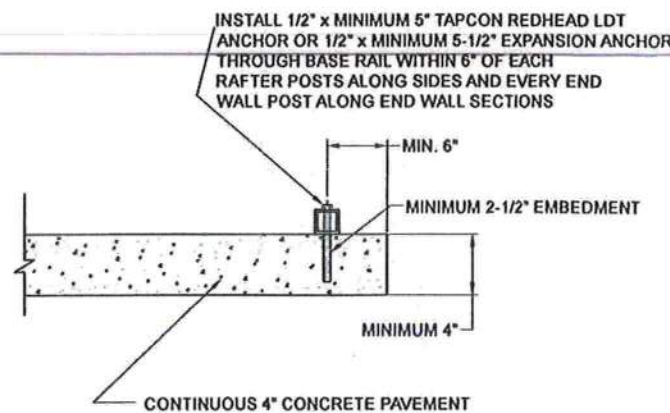
CAROLINA CARPORTS, INC.
GENERIC PLANS FOR USE IN THE STATE OF FLORIDA



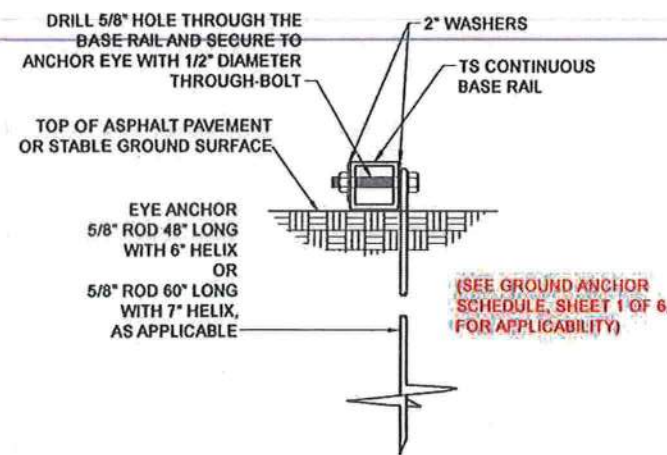
FIELD	DATE
ERFAN MKB	2/21/2023
CHECKED TB / CS	SCALE NTS
APPROVED TB / LP	FROM NO: G23001
SHEET 3 OF 6	



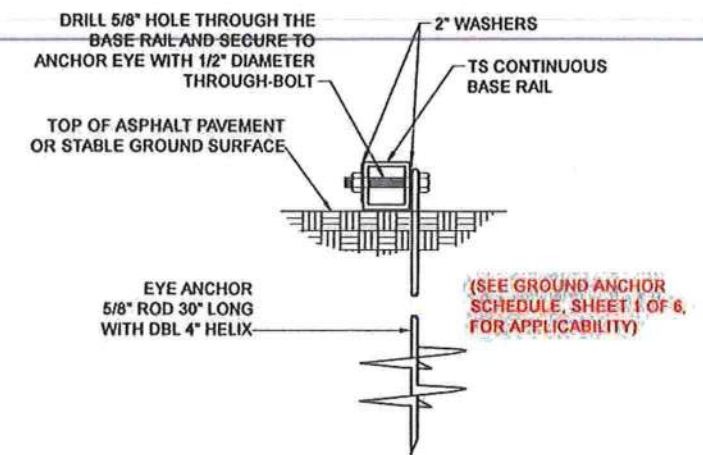
1A CONCRETE BASE RAIL ANCHORAGE
Not To Scale



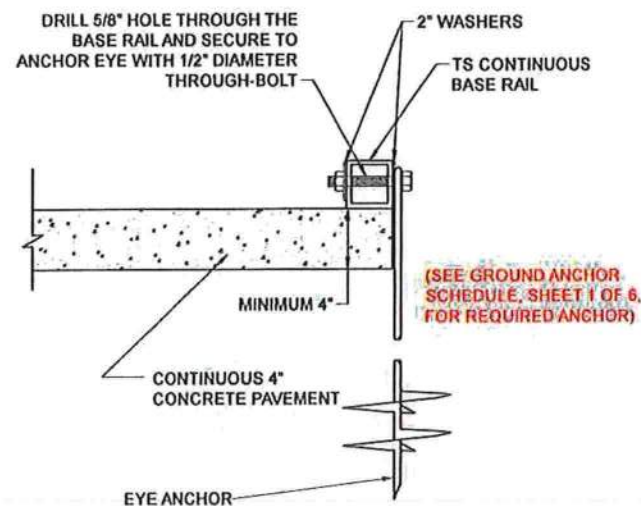
1B CONCRETE BASE RAIL ANCHORAGE
Not To Scale (OPTIONAL - OPEN CARPORTS ONLY)



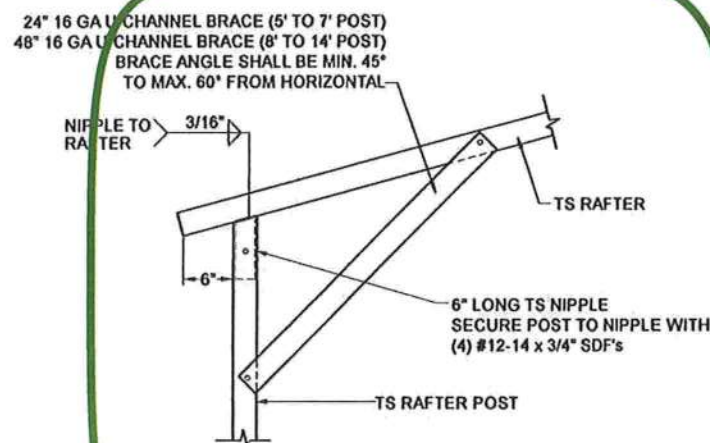
1C BASE RAIL DEEP ANCHORAGE
Not To Scale



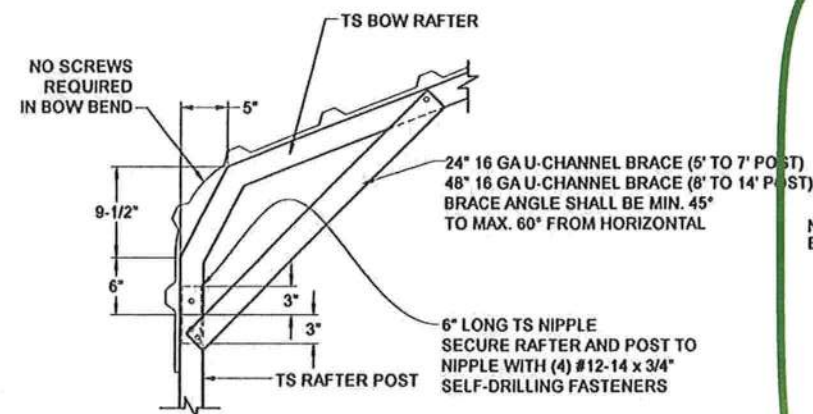
1D BASE RAIL ANCHORAGE
Not To Scale



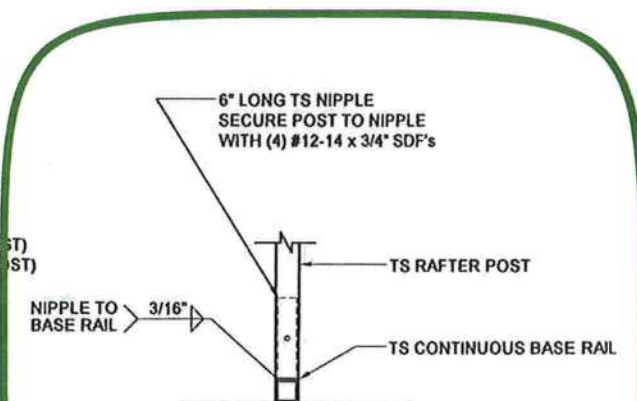
1E CONCRETE BASE RAIL ANCHORAGE
Not To Scale (OPEN CARPORTS WHERE SLAB EDGE DISTANCE DOES NOT MEET MINIMUM EDGE DISTANCE SHOWN IN DETAIL 1B)



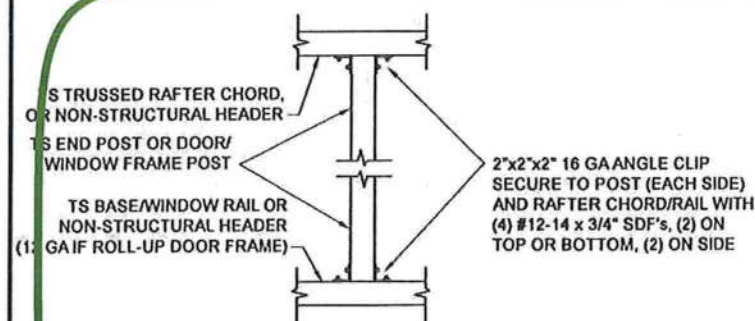
2A BOX EAVE RAFTER/POST DETAIL
Not To Scale



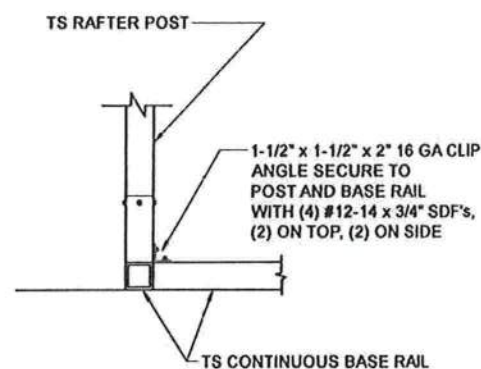
2B BOW RAFTER/POST DETAIL
Not To Scale



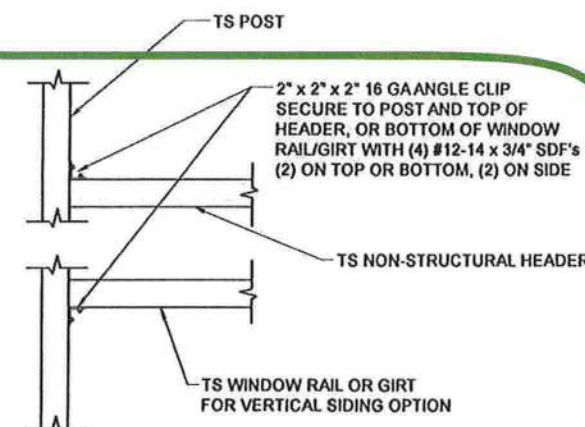
3 POST/BASE RAIL CONN. DETAIL
Not To Scale



4 POST TO RAIL, TRUSS CHORD, OR NON-STRUCTURAL HEADER CONN. DETAIL
Not To Scale



5 END POST/BASE RAIL CONN.
Not To Scale



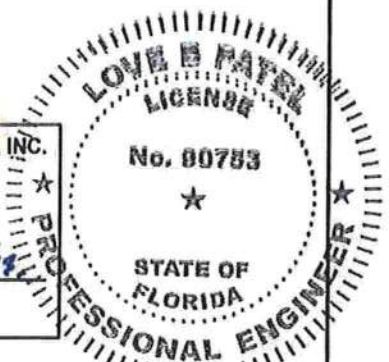
6 NON-STRUCTURAL HEADER, WINDOW RAIL, OR GIRT TO POST CONN. DETAIL
Not To Scale

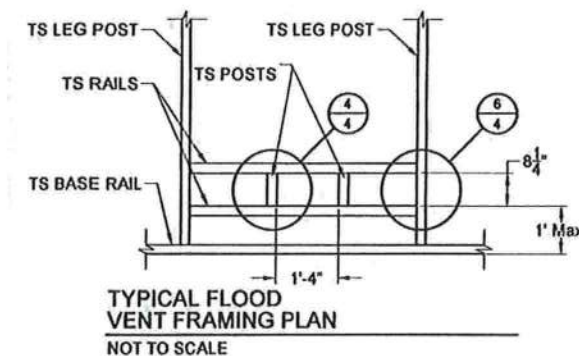
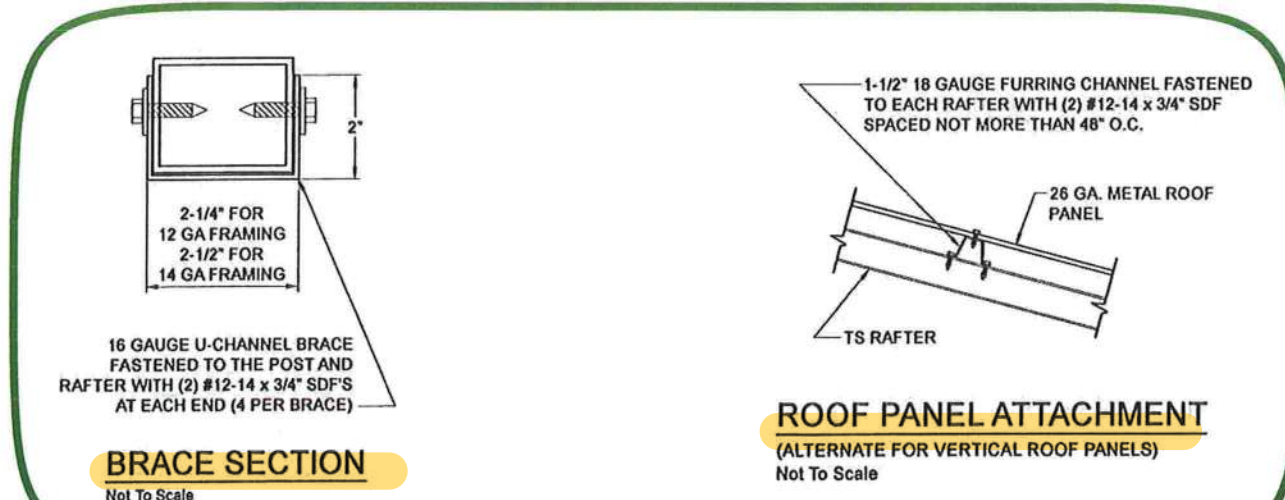
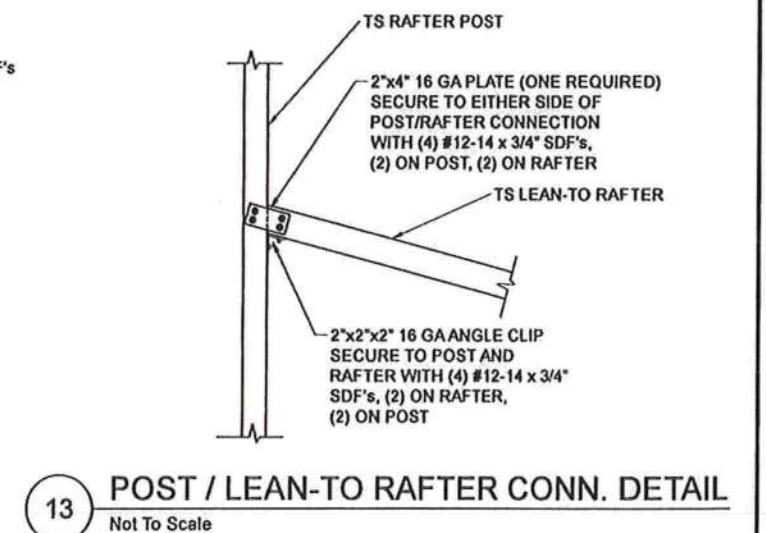
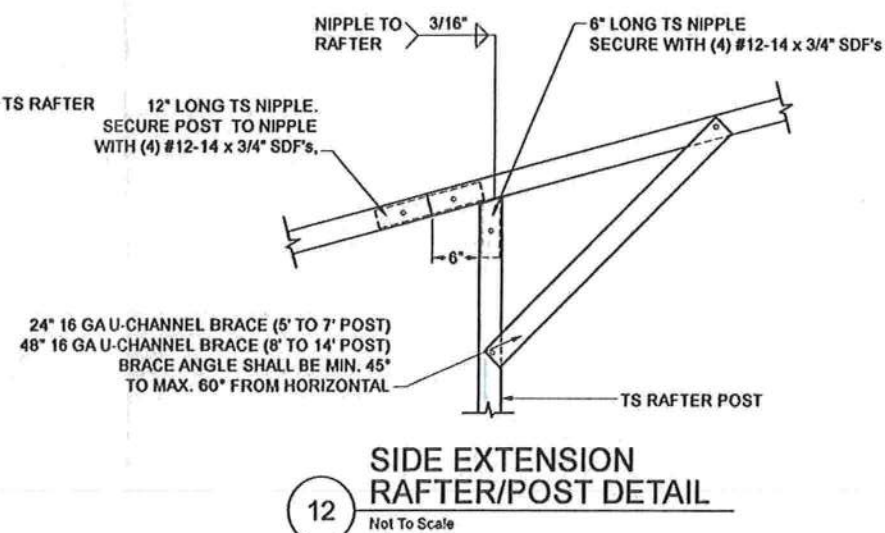
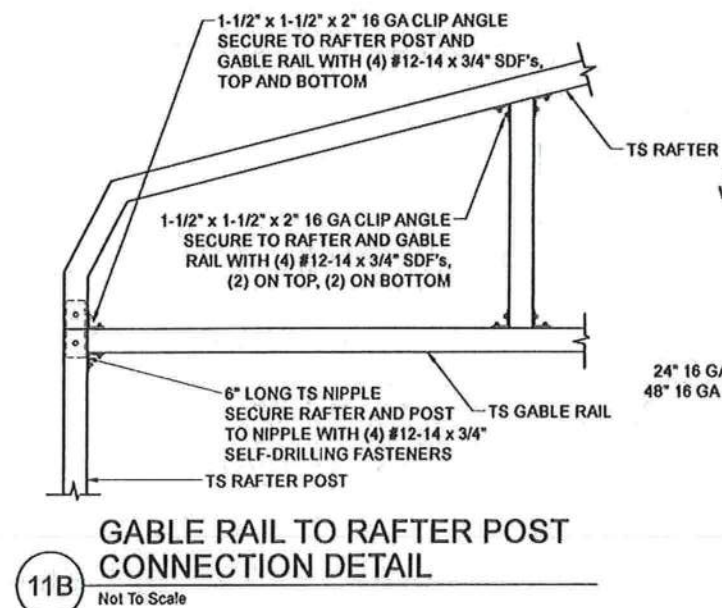
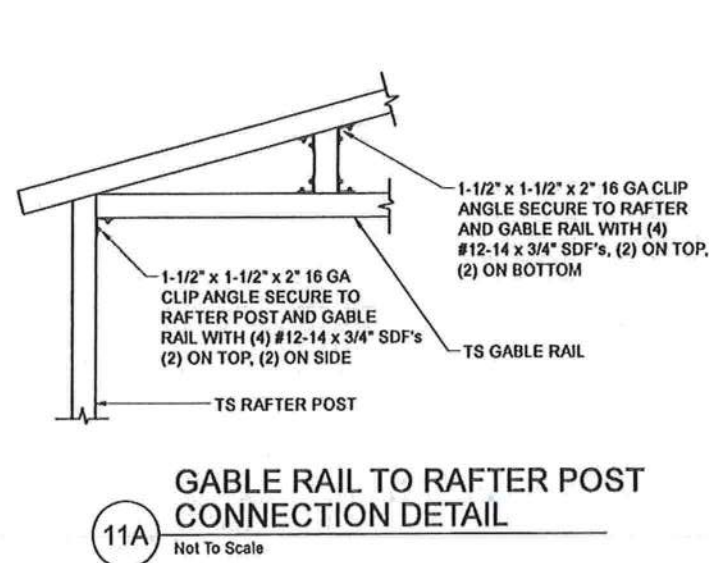
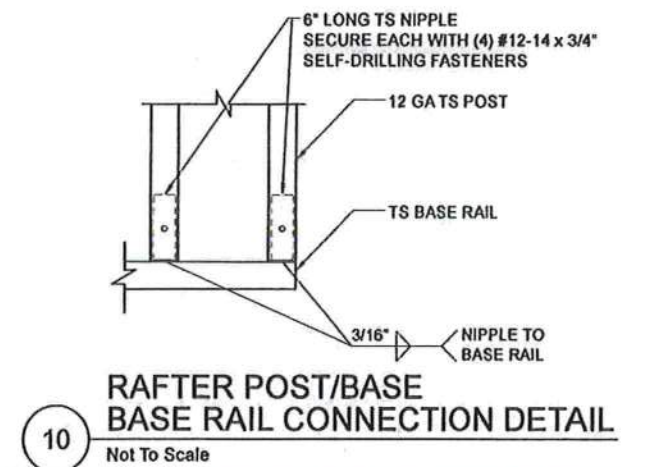
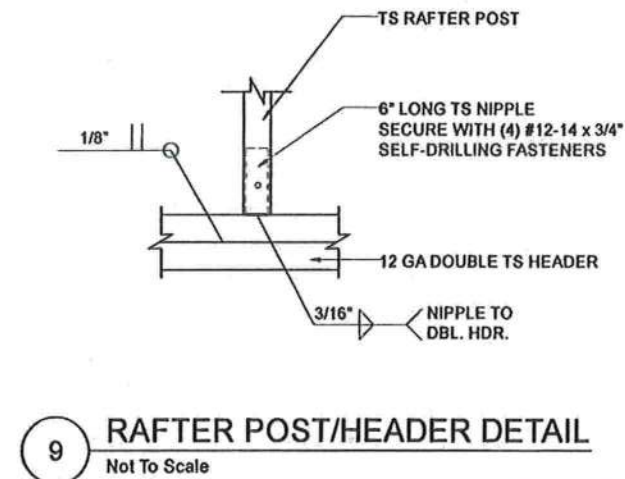
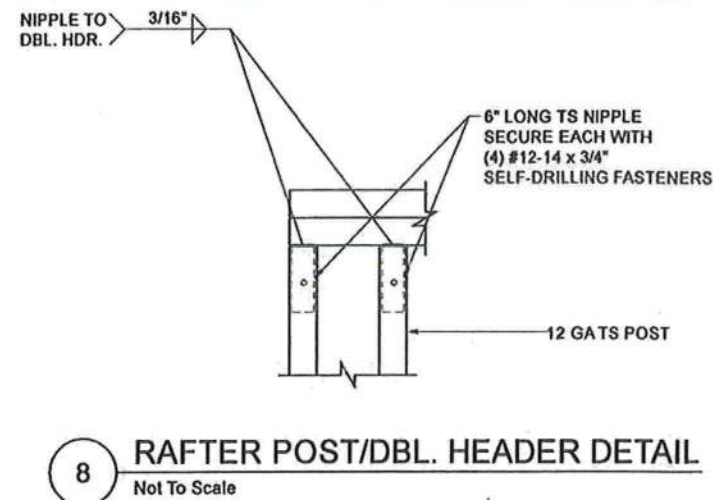
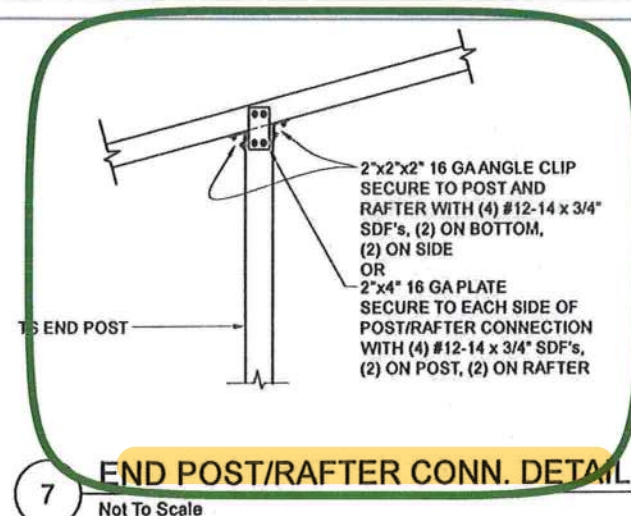
BECHTOL ENGINEERING AND TESTING, INC.
605 WEST NEW YORK AVENUE
DELAND, FLORIDA 32720

CAROLINA CARPORTS, INC.
GENERIC PLANS FOR USE IN THE STATE OF FLORIDA

BECHTOL ENGINEERING
AND TESTING, Inc.
CONSULTING GEOTECHNICAL, ENVIRONMENTAL, AND MATERIALS TESTING ENGINEERS
Certificate of Authorization No. 00006403

FIELD	DATE	2/21/2023
EXAM	SCALE	NTS
CHECKED	PROJ NO.	G23001
APPROVED	TB/LP	SHEET 4 OF 6





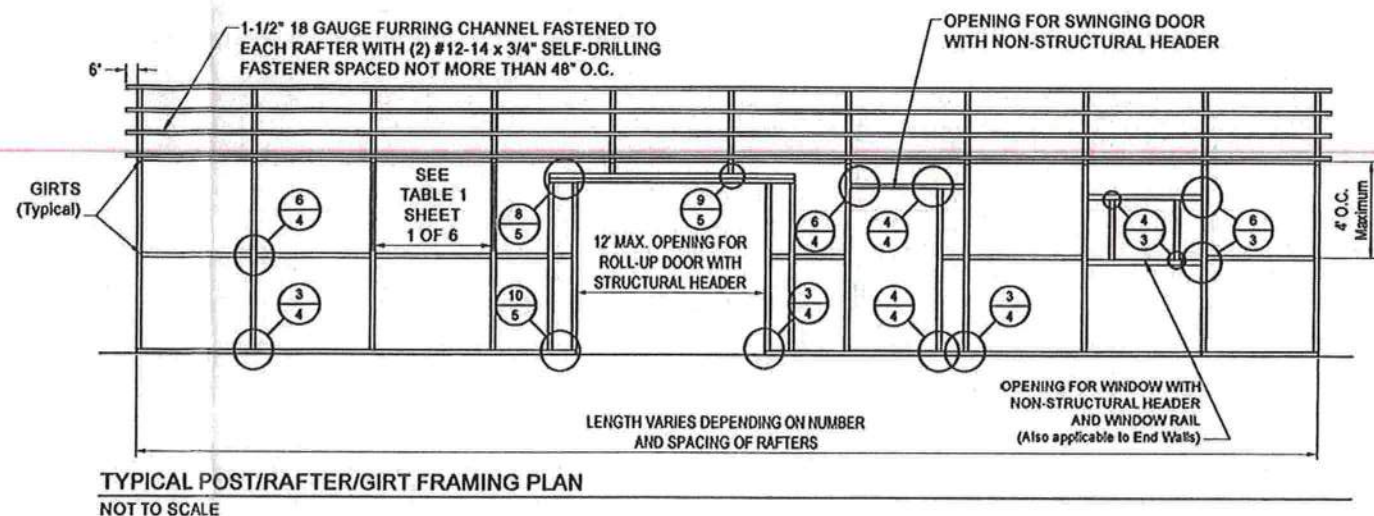
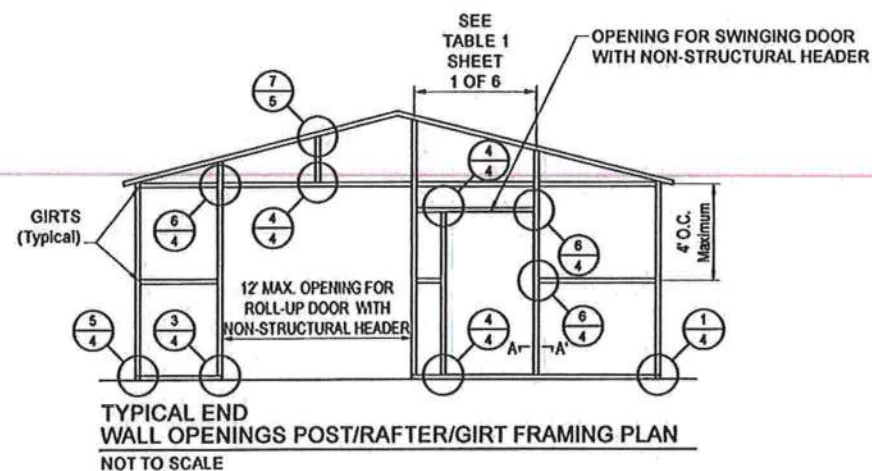
SEE GENERAL NOTE No. 12, SHEET 1 OF 6

BECHTOL ENGINEERING AND TESTING, INC.
605 WEST NEW YORK AVENUE
DELAND, FLORIDA 32720

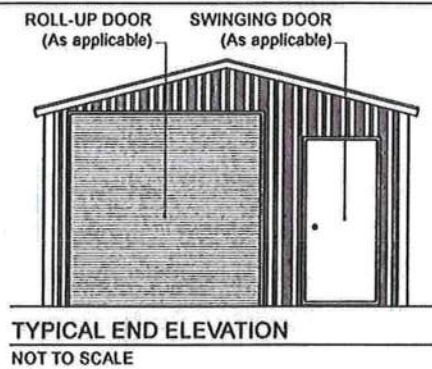
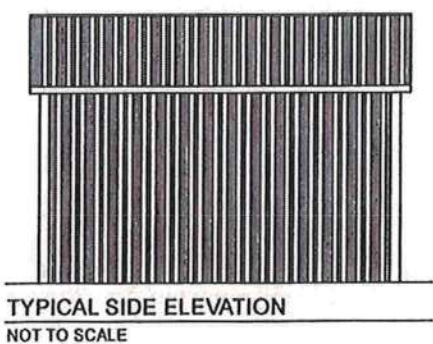
CAROLINA CARPORTS, INC.
GENERIC PLANS FOR USE IN THE STATE OF FLORIDA

<p>BECHTOL ENGINEERING AND TESTING, Inc. <small>CORRELATION GEOTECHNICAL, ENVIRONMENTAL AND MATERIALS TESTING ENGINEERS Certificate of Authorization No. 00056492</small></p>	FIELD	DATE
	CADD	2/21/2023
	CHECKED	SCALE
	APPROVED	NTS
	TS/CS	FROM NO.
	TB/LP	G23001
		SHEET 5 OF 6

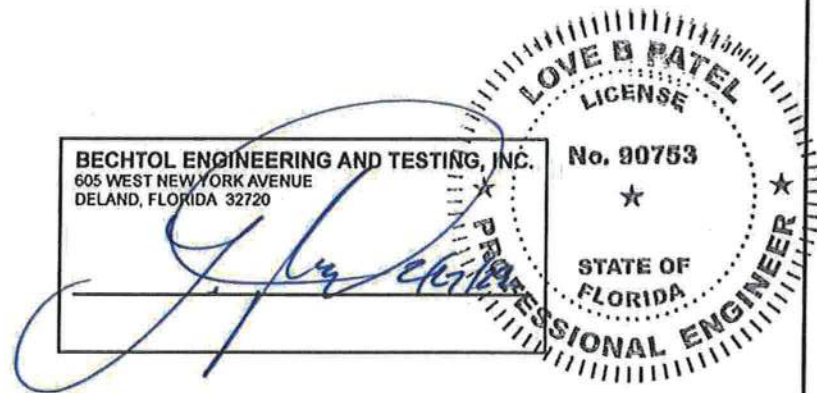
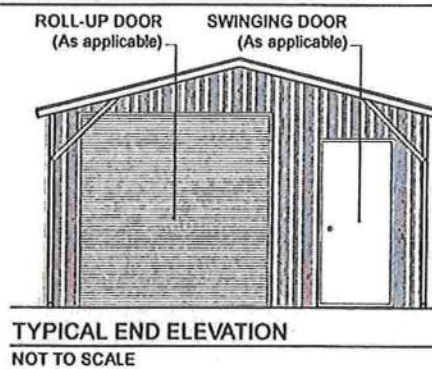
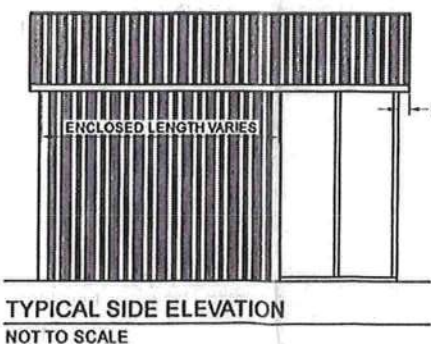
VERTICAL SIDE OPTION



BOX EAVE FRAME RAFTER ENCLOSED BLDG - VERTICAL SIDES



BOX EAVE FRAME RAFTER UTILITY BLDG - VERTICAL SIDES



CAROLINA CARPORTS, INC.
GENERIC PLANS FOR USE IN THE STATE OF FLORIDA

	FIELD	DATE	2/21/2023
	DRAWN	SCALE	NTS
	CHECKED	PROJ NO.	G23001
	APPROVED	SHEET 6 OF 6	