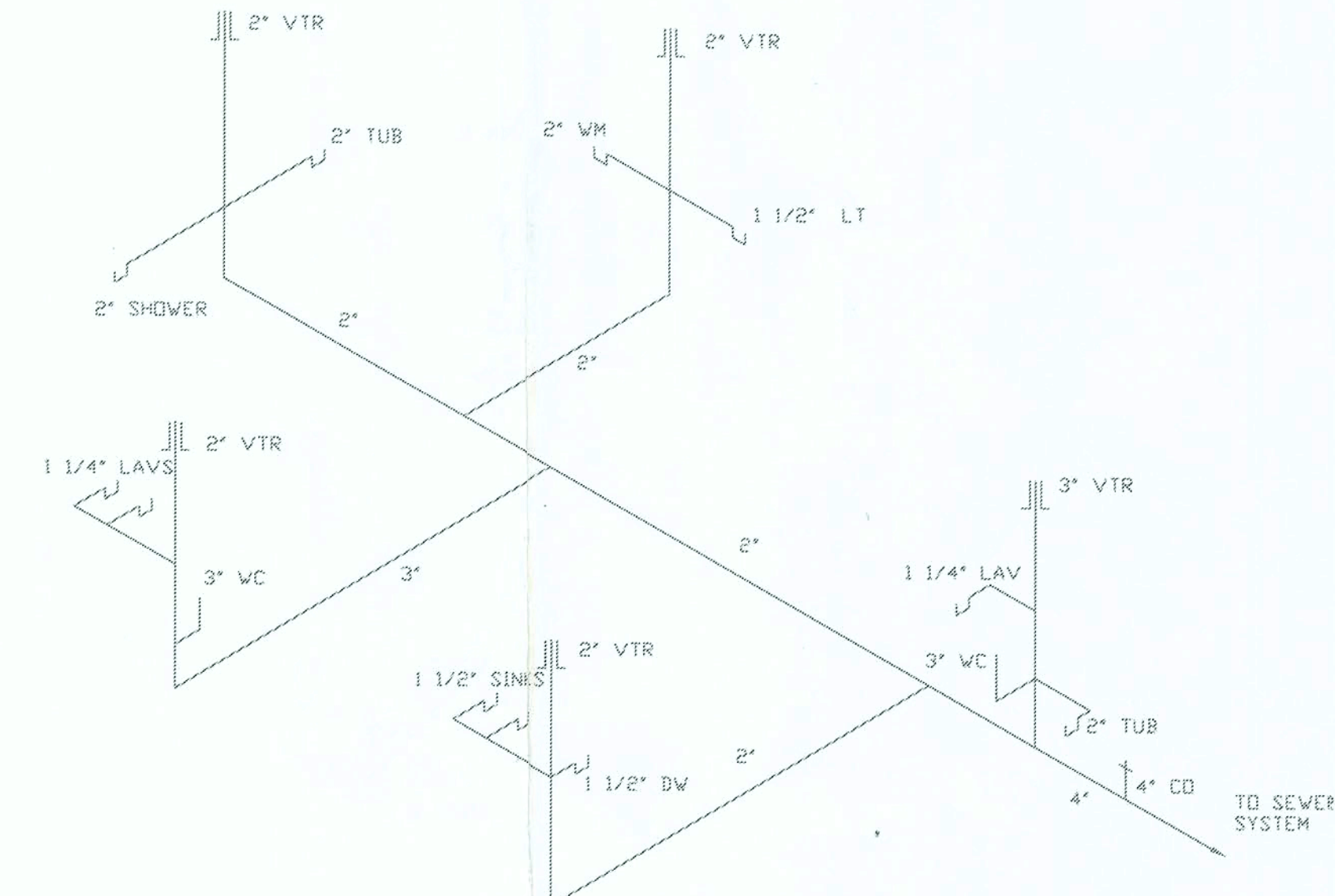
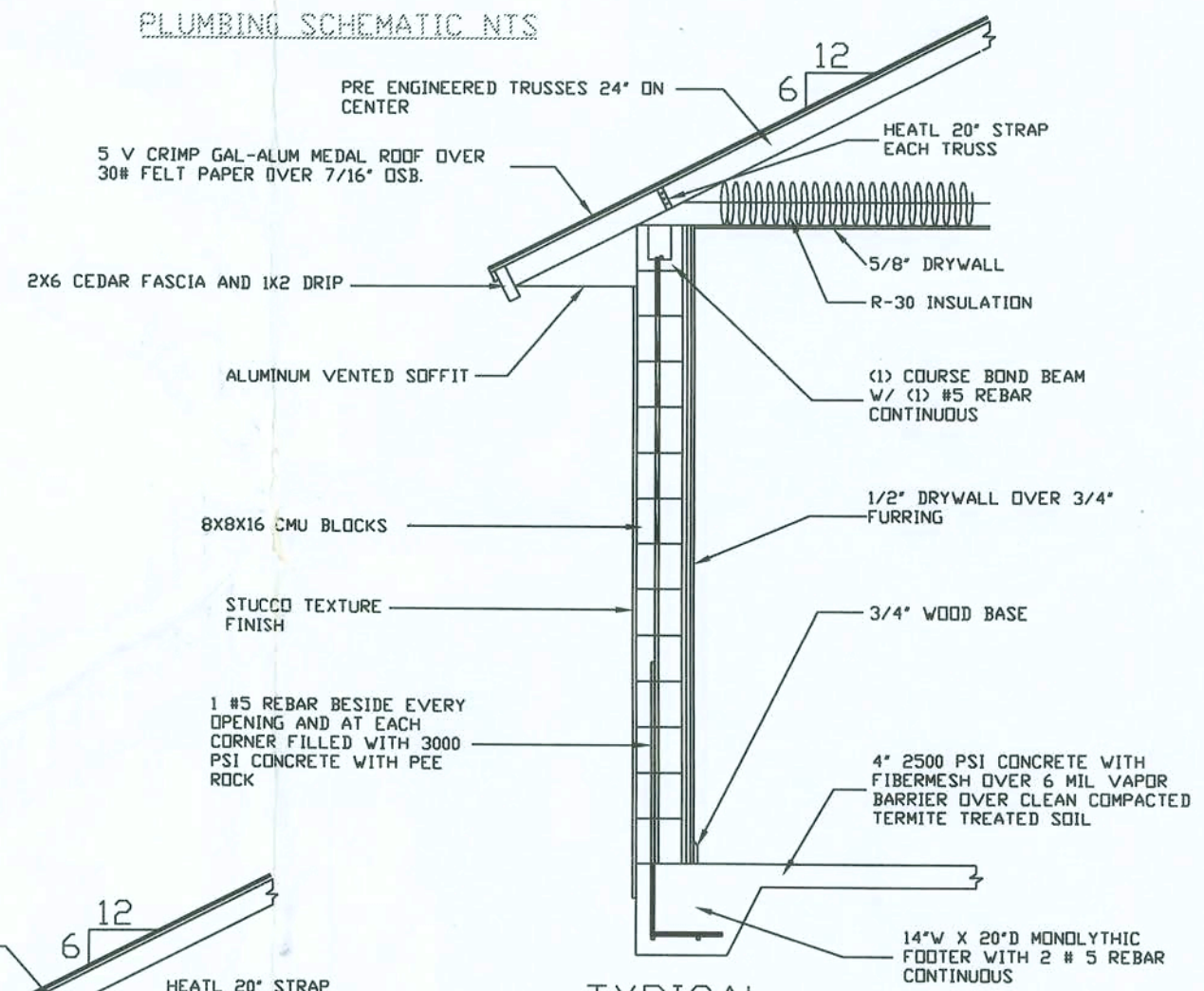


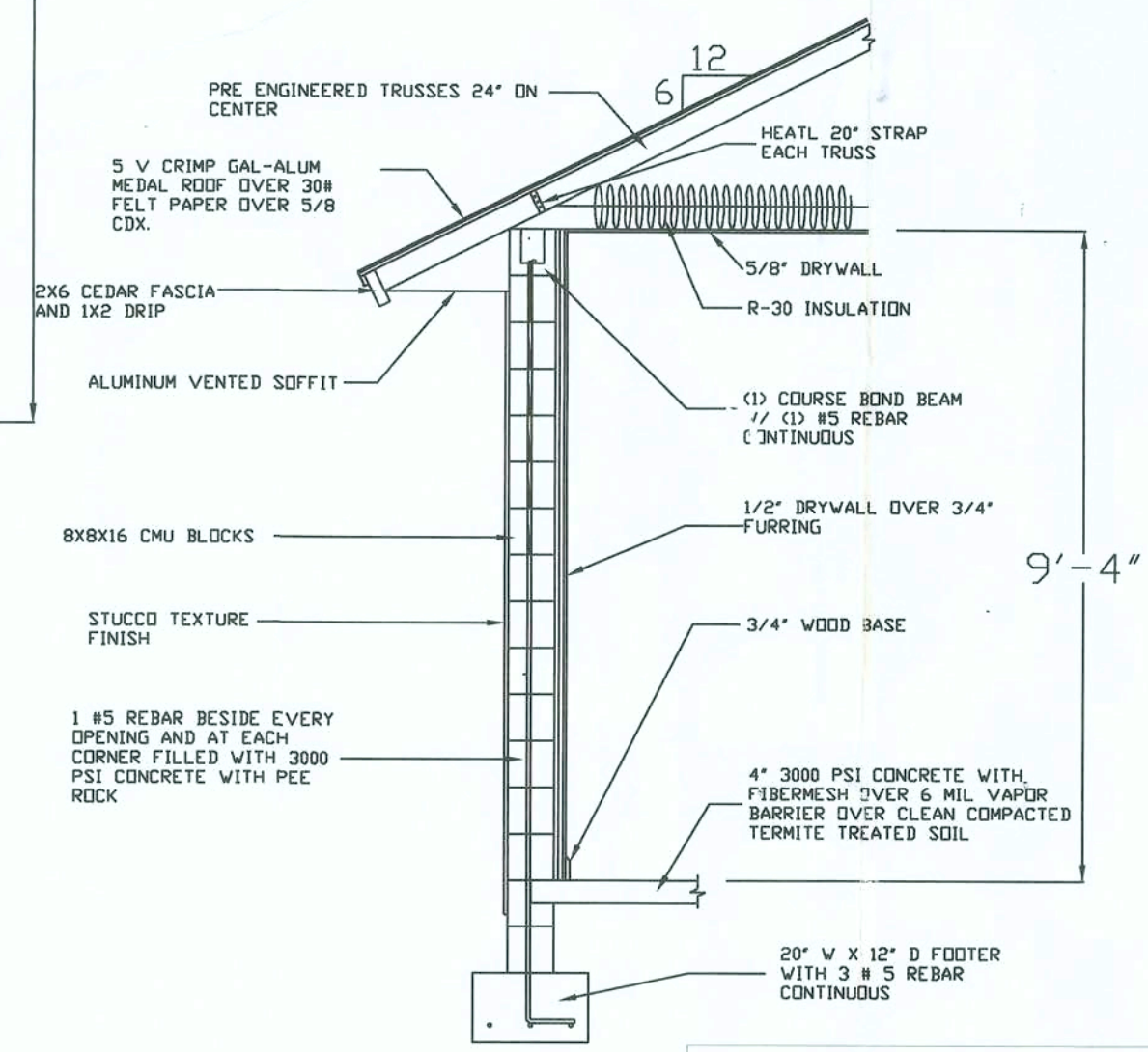
FOUNDATION PLAN
1/4" = 1'



PLUMBING SCHEMATIC N.T.S.



TYPICAL WALL SECTION

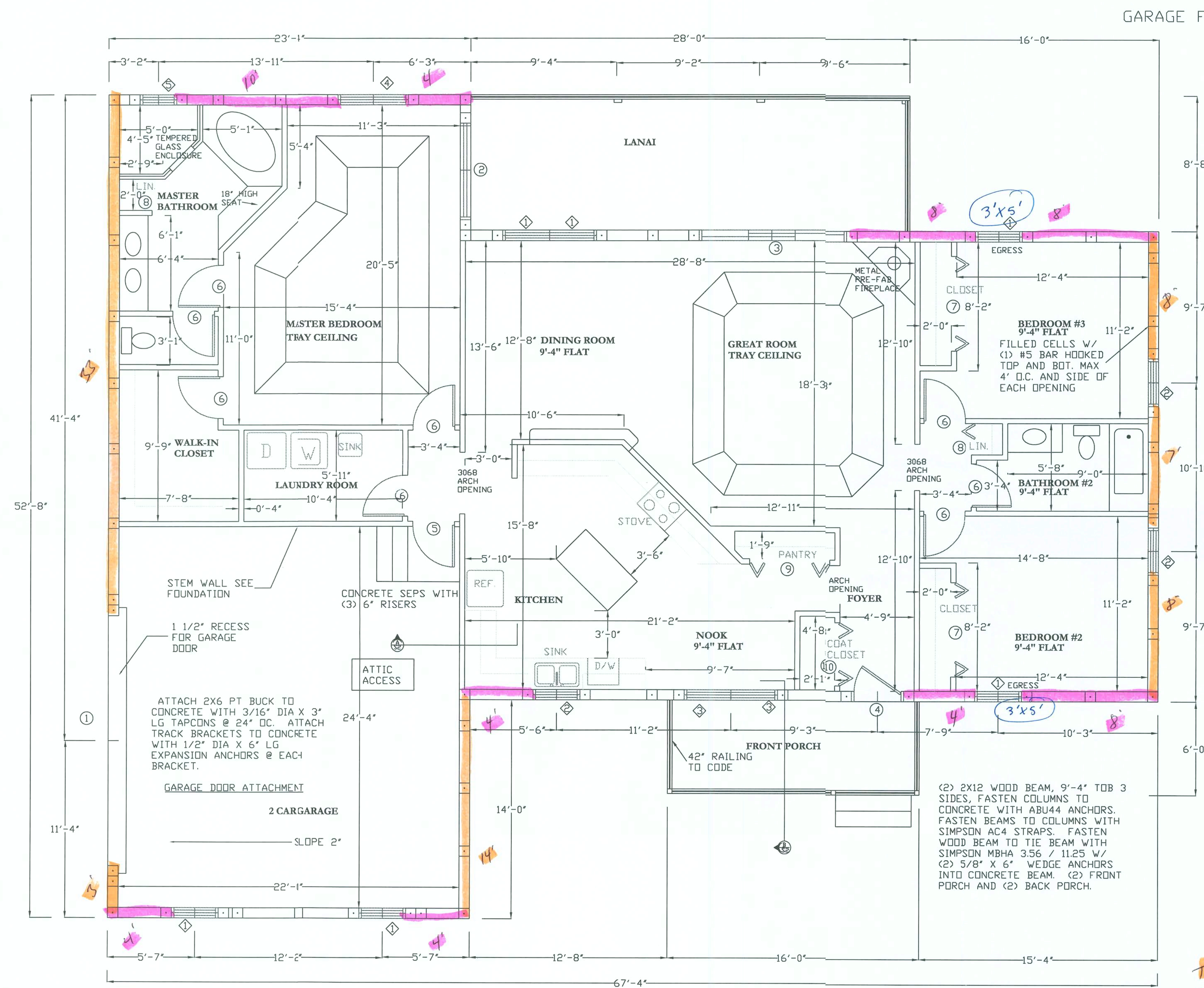


TYPICAL WALL SECTION

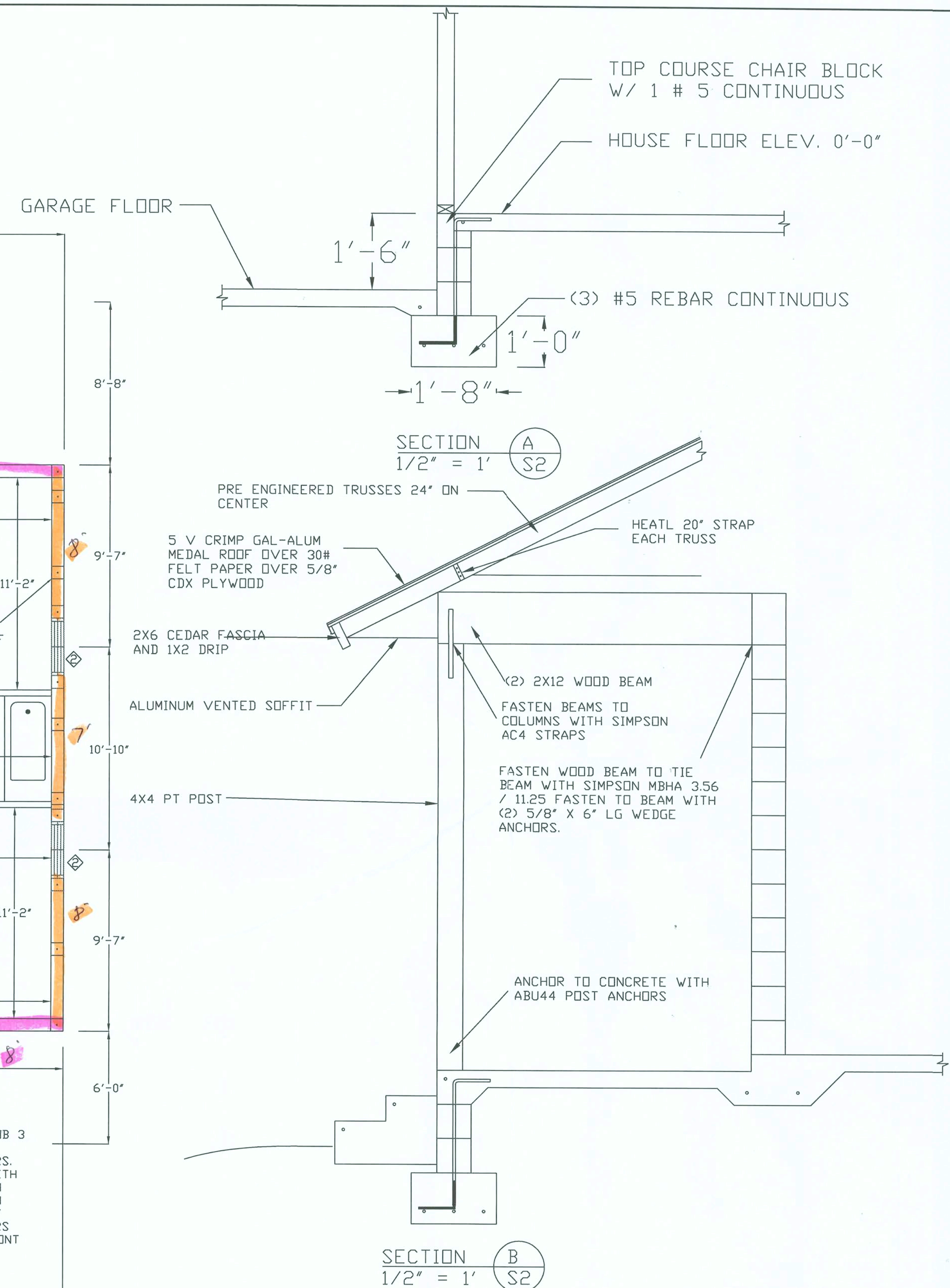
COOPER ENTERPRISES INC		DRAWN BY: STEWART COOPER DATE: 11/29/05 APPROVED BY: [Signature] DRAWING NUMBER: 3 OF 5
KASMIRE MODEL		
SCALE: AS NOTED		
FOUNDATION		

3 Riders Estate
Lot 36

DOOR SCHEDULE				WINDOW SCHEDULE		
#	SIZE	QUANTITY	DESCRIPTION	SIZE	QUANTITY	
16	6' 8"	1	EXTERIOR GARAGE DOOR	2	25	6
2	606B	1	SLIDING GLASS W/ SCREEN	2	23	3
3	906B	1	SLIDING GLASS W/ SCREEN	5	14	2
4	306B	1	EXT. METAL W/ FIXED GLASS	5	1/2	32
5	206B	1	EXT. METAL			
6	206B	8	INT WOOD 6 PANEL			
7	606B	2	BI-FOLD			
8	206B	2	BI-FOLD			
9	506B	1	BI-FOLD			
10	406B	1	BI-FOLD			




FLOOR PLAN
1/4" = 1'-0"



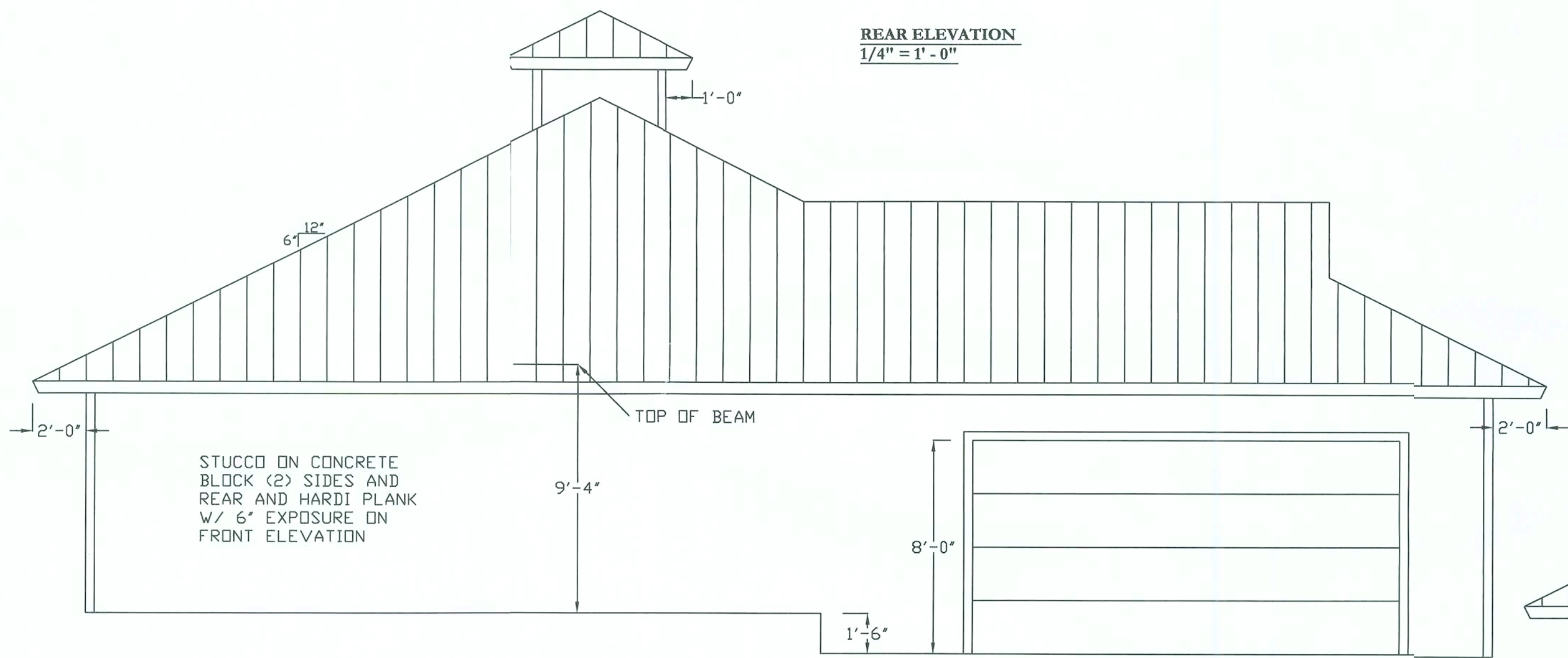
TR5 73'
606-54'

6016-54'

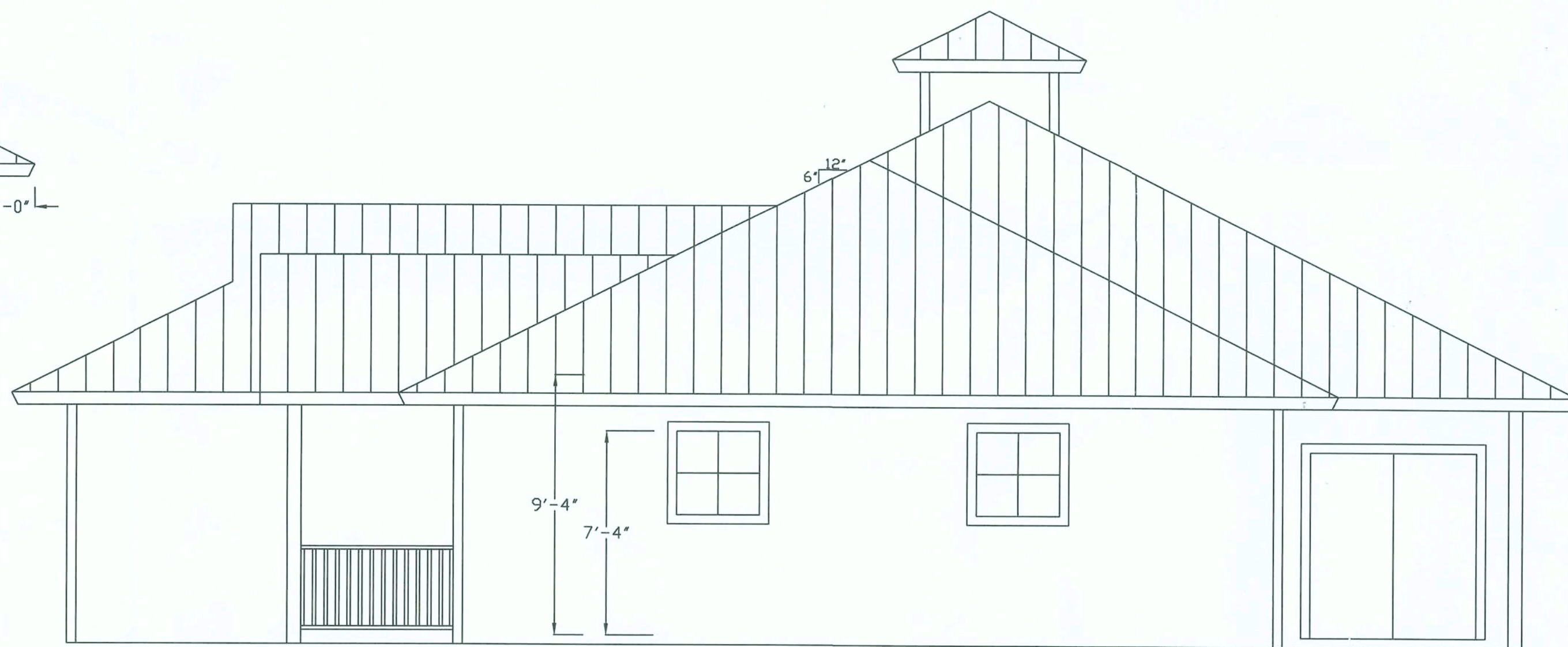
	COOPER ENTERPRISES INC KASMIRE MODEL		
	SCALE: AS NOTED DATE: 11/29/05	APPROVED BY:	DRAWN BY:  STEWART COOPER
	FLOOR PLAN		DRAWING NUMBER: 2 OF 5



REAR ELEVATION
1/4" = 1' - 0"



LEFT ELEVATION
1/4" = 1' - 0"



RIGHT ELEVATION
1/4" = 1' - 0"



GENERAL NOTES:

CONSTRUCTION SHALL FOLLOW THE 2001 FLORIDA BUILDING CODE AND ALL THE AMENDMENTS ADOPTED BY THE STATE OF FLORIDA AND THE BUILDING DEPARTMENT OF THE LOCAL JURISDICTION.

CONTRACTOR SHALL VERIFY ALL DIMENSIONS AND CONDITIONS AT JOBSITE PRIOR TO AND DURING CONSTRUCTION. IF A DEVIATION FROM THE PLANS IS IDENTIFIED, THE CONTRACTOR SHALL NOTIFY ENGINEER OF RECORD, BEFORE INITIATING OR CONTINUING WORK OR THE CONTRACTOR SHALL ACCEPT FULL RESPONSIBILITY FOR ALL DEVIATIONS FROM THE PLANS.

ALL WRITTEN DIMENSIONS ON THESE PLANS TAKE PRECEDENCE OVER SCALED DIMENSIONS.

CONTRACTOR IS RESPONSIBLE FOR ADEQUATE BRACING OF STRUCTURAL AND NON-STRUCTURAL MEMBERS DURING CONSTRUCTION. IT IS THE CONTRACTOR'S RESPONSIBILITY TO ADHERE TO ALL LOAD LIMITS PLACED ON FLOORING, WALL AND ROOF SYSTEMS DURING CONSTRUCTION.

THE INSTALLATION OF SPECIFIED HARDWARE SHALL CONFORM TO THE MANUFACTURER'S SPECIFICATIONS AND STANDARD PRACTICE.

STRUCTURAL FEATURES NOT DETAILED ON THESE PLANS SHALL BE ADDRESSED BY THE ENGINEER OF RECORD AS REQUIRED.

ANY CHANGES MADE DURING CONSTRUCTION THAT DEVIATE FROM THE SPECIFICATIONS CALLED OUT ON THESE PLANS MUST BE APPROVED BY THE ENGINEER OF RECORD.

ALL REINFORCING STEEL USED IN CONSTRUCTION SHALL BE GRADE 40.

UNLESS OTHERWISE NOTED, MINIMUM CONCRETE PROTECTION FOR REINFORCING BARS IN FOOTING IS 3". LAP ALL REINFORCING STEEL A MINIMUM OF 30".

MINIMUM SOIL BEARING CAPACITY FOR NEW FOOTING AND SLAB IS 2500PSI.

CONTRACTOR TO VERIFY ROUGH MASONRY OPENINGS FOR ALL DOORS AND WINDOWS.

SURVEYOR TO LOCATE PROPOSED PROJECT ON LOT.

AC	1987 SF
FRONT PORCH	96 SF
BACK PORCH	242 SF
GARAGE	562 SF
TOTAL	2887 SF

COOPER ENTERPRISES INC
KASMIRE MODEL

SCALE: AS NOTED
DATE: 11/29/05

ELEVATIONS

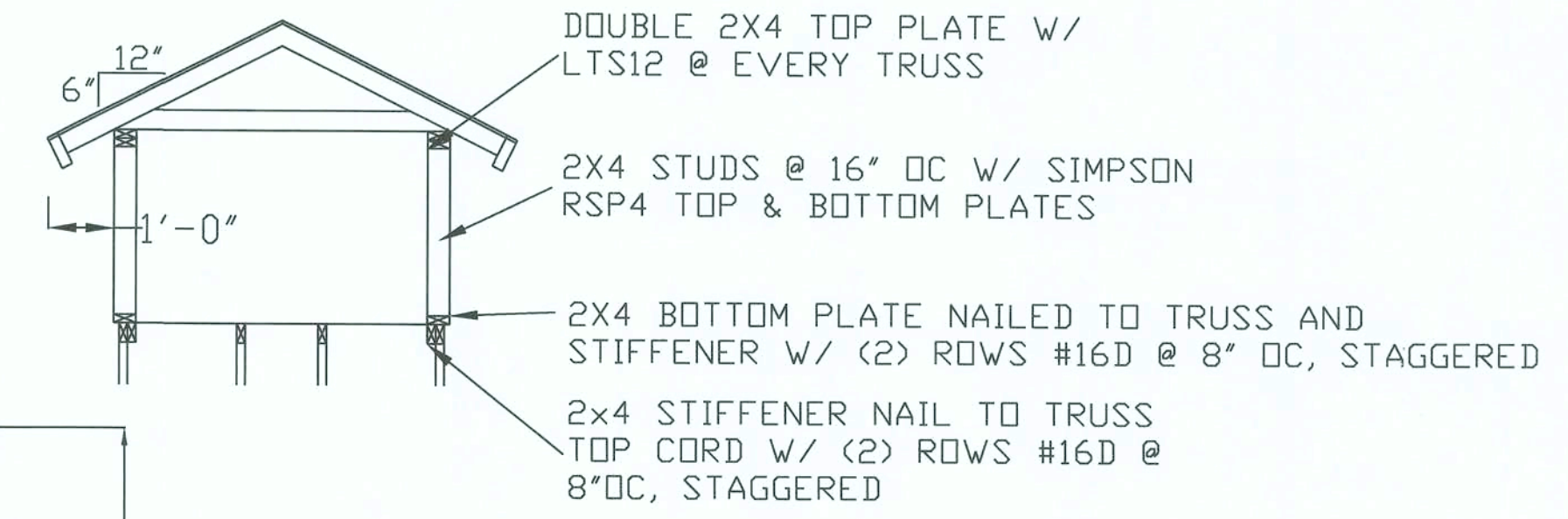
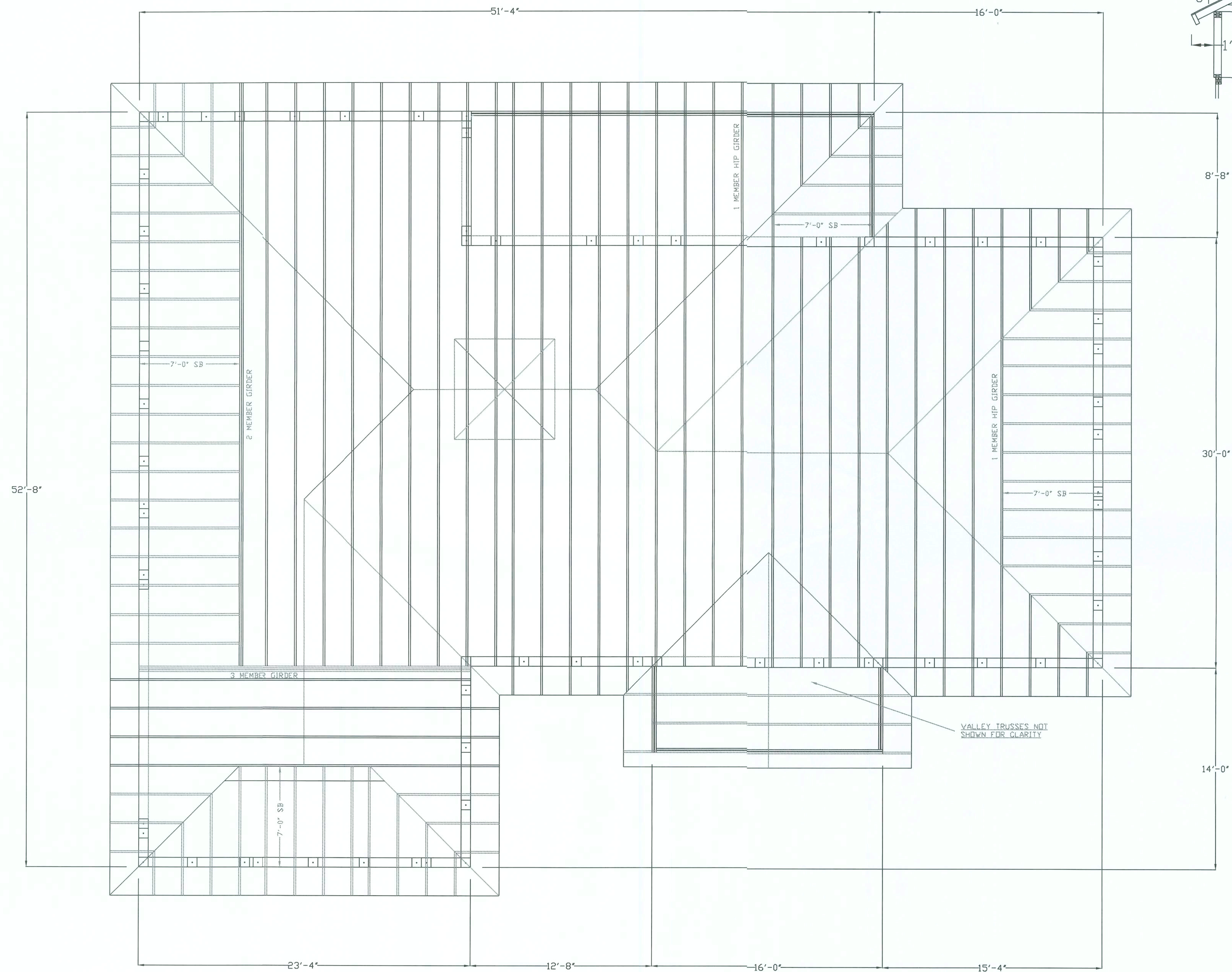
APPROVED BY:

DRAWN BY:

STEWART COOPER

DRAWING NUMBER:

1 OF 6



8'-8" CUPOLA FRAMING DETAIL
NTS

TRUSS PLAN
1/4" = 1'-0"

COOPER ENTERPRISES INC
KASMIRE MODEL

SCALE: AS NOTED

DATE: 11/29/05

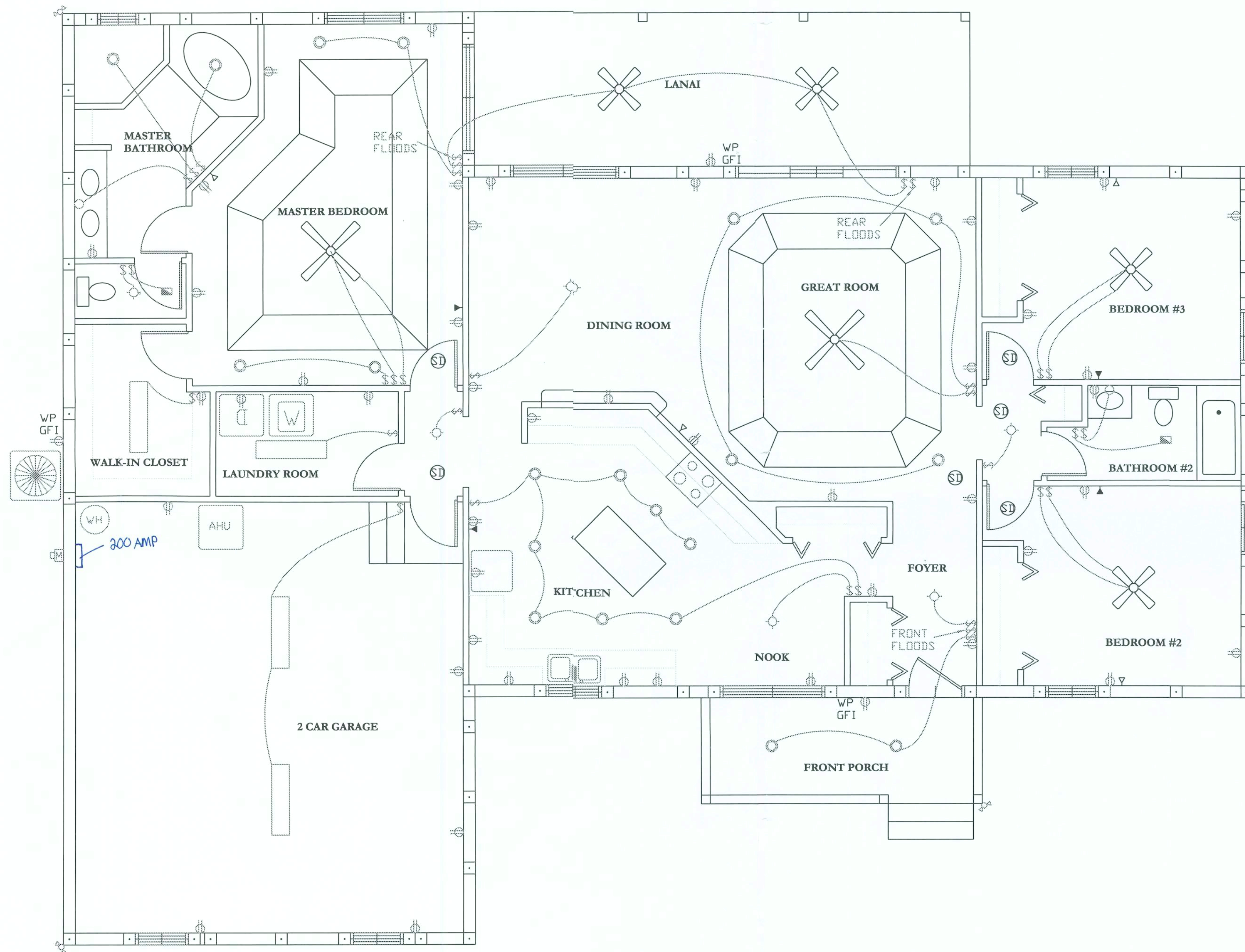
TRUSS

APPROVED BY:

DRAWN BY:

STEWART COOPER

DRAWING NUMBER:
4 OF 5



- LIGHT FIXTURE
- LIGHT FIXTURE, WALL MOUNTED
- LIGHT FIXTURE, RECESSED
- ⊕ DUPLEX RECEPTACLE
- △ TV
- ▽ TELEPHONE
- \$ SWITCH
- SD SMOKE DETECTOR
- EF EXHAUST FAN
- EF EXTERIOR FLOODS

ELECTRICAL KEY

ELECTRIC PANEL LOAD CALCS				
DESCRIPTION	KW'S	VOLTS	POLES	TRIP
PUMP	2.0	240	2	30
KITCHEN APPLIANCES	3.0	115	1	20
REFRIG	1.5	115	1	20
DISHWASHER	1.5	115	1	20
WASHER	1.5	115	1	20
DRYER	5.0	240	2	30
WATER HEATER	5.0	240	2	30
AHU AND HEAT STRIP	10.0	240	2	30
A/C COMPRESSOR	3.0	240	2	30
RANGE / OVEN	12.0	240	2	50
GFI	3.0	115	1	20
GEN LIGHTING	9.5	115	1	15
TOTAL (LESS HEAT)	49.0			

A/C @ 100%	= 10,000
1ST 1000 WATTS @ 100%	= 10,000
REMAINING WATTS @ 40%	= 15,200
WATTS / 240VOLTS	= 147 AMPS

ELECTRICAL PLAN

1/4" = 1'- 0"

COOPER ENTERPRISES INC
KASMIRE MODEL

SCALE: AS NOTED
DATE: 11/29/05

ELECTRICAL

DRAWN BY:
STEWART COOPER

DRAWING NUMBER:
5 OF 5