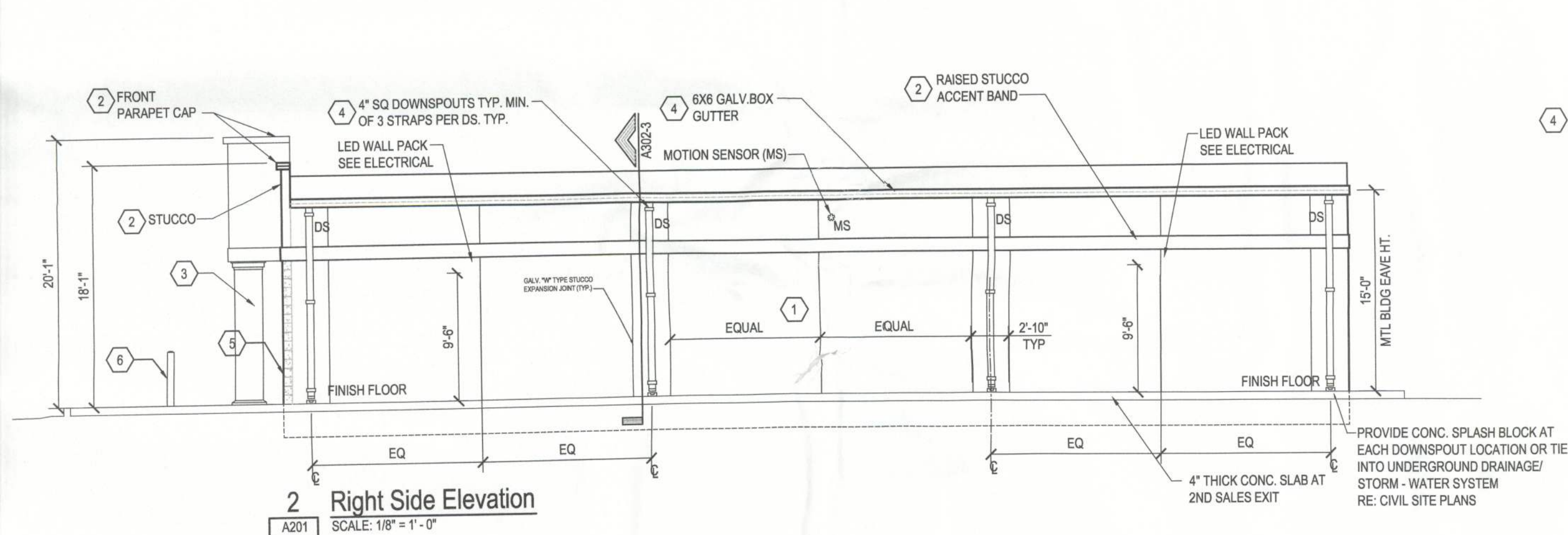
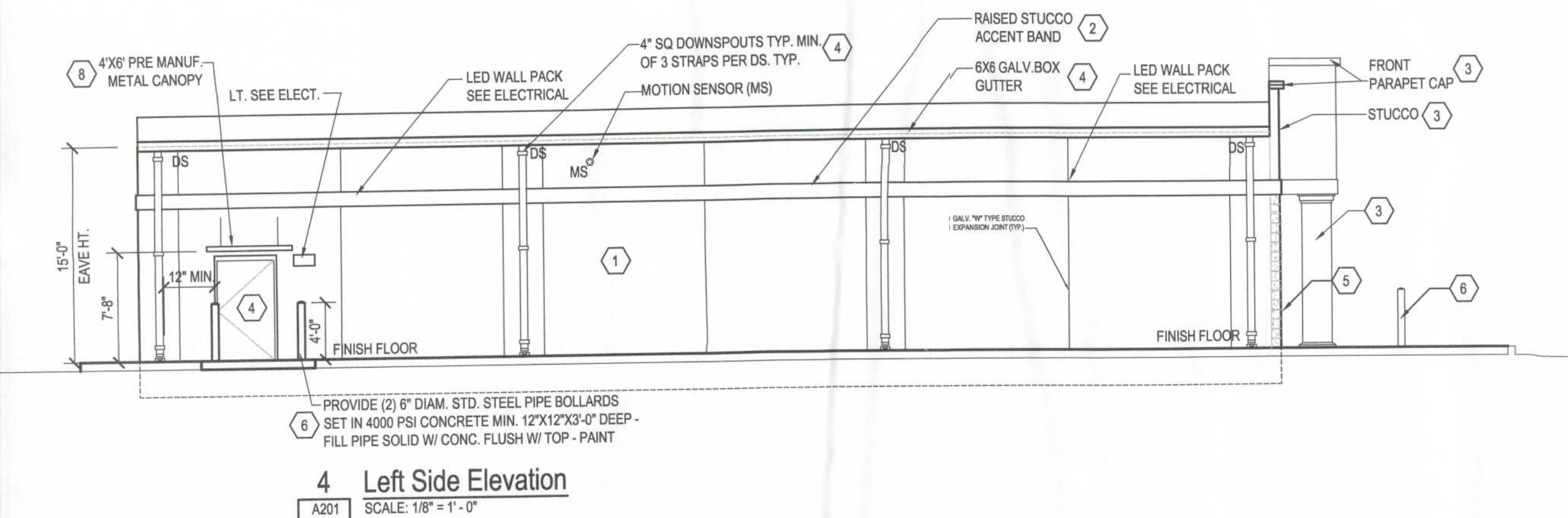


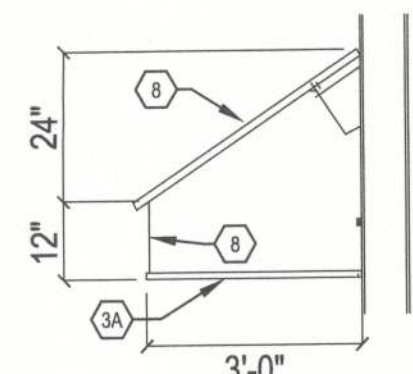
1 Front Elevation
SCALE: 1/4" = 1' - 0"



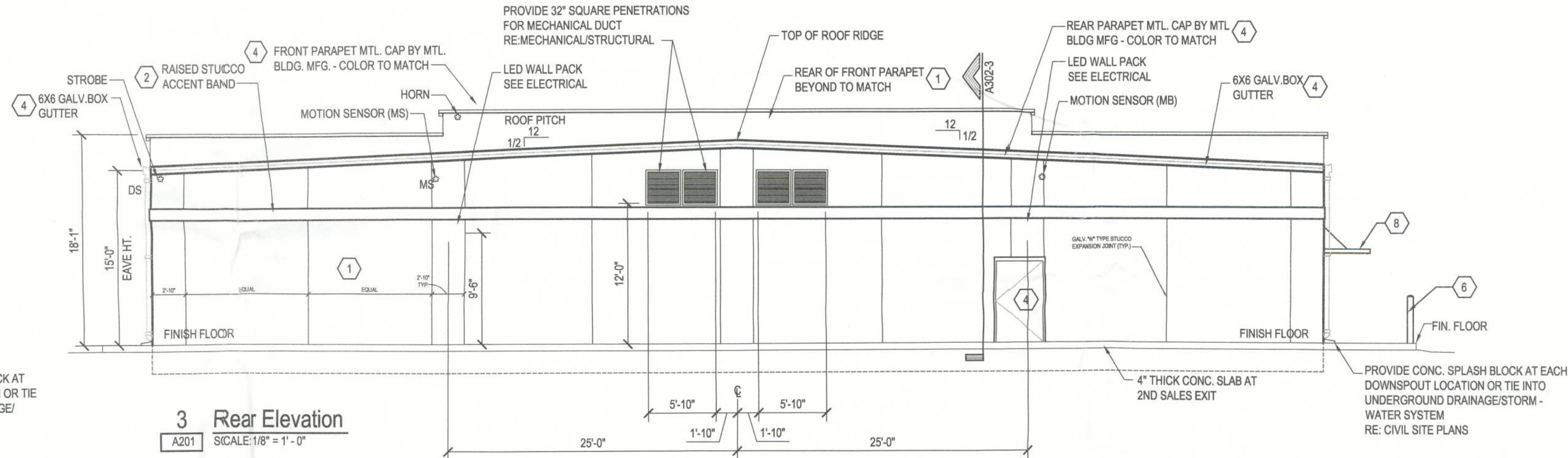
2 Right Side Elevation
SCALE: 1/8" = 1' - 0"



4 Left Side Elevation
SCALE: 1/8" = 1' - 0"



5 Canopy Detail
SCALE: 3/8" = 1' - 0"



3 Rear Elevation
SCALE: 1/8" = 1' - 0"

EXTERIOR FINISH SCHEDULE

NO.	AREA	TYPE	COATS	COLOR
1	78" STUCCO FINISH (SIDE AND REAR WALLS)	EXT. LATEX	1 PRIMER 2 FINISH	SHERWIN WILLIAMS SW 6122 "CAMELBACK"
2	RAISED STUCCO ACCENT BAND	EXT. LATEX	1 PRIMER 2 FINISH	SHERWIN WILLIAMS SW 6122 "BISCUIT"
3	5/8" STUCCO FINISH (FRONT ELEVATION) CANOPY COLUMNS FRONT ELEVATION PARAPET CAP	EXT. LATEX	1 PRIMER 2 FINISH	SHERWIN WILLIAMS SW 6148 "WOOL SKEIN"
3A	SOFFIT PANELS	VP - PANEL RIB NUCOR - GLASSIC WALL MID-EST - PBR PANEL	PRE-FINISHED	VP COLOR "ARTIC WHITE" NUCOR COLOR "POLAR WHITE" MID-WEST COLOR "POLAR WHITE" SHERWIN WILLIAMS MATCHING COLOR SW 6148 "WOOL SKEIN"
4	DOORS, GUTTERS, MTL. TRIM, SIDES AND REAR PARAPET CAP	MTL. BLDG MANUF.	PRE-FINISHED	SHERWIN WILLIAMS MATCHING COLOR SW 6122 "CAMELBACK"
5	SPLIT FACED CMU	EXT. LATEX	2	SHERWIN WILLIAMS SW 6122 "CAMELBACK"
6	STEEL BOLLARDS	EXT. LATEX	2	SHERWIN WILLIAMS MATCHING COLOR SW 4081 "SAFETY RED"
7	METAL ROOF	STANDING SEAM	PRE-FINISHED	GALVALUME
8	REAR METAL CANOPY	MTL. BLDG MANUF.	PRE-FINISHED	SHERWIN WILLIAMS MATCHING COLOR SW 6112 "BISCUIT"

EXTERIOR FINISH NOTES:

1. APPLY MASONRY BLOCK FILLER TO CONCRETE BLOCK PRIOR TO FINISH PAINTING
2. G.G. TO SUBMIT MANUF. STANDARD COLORS TO FAMILY DOLLAR APPROVAL
3. G.G. OR PAINT CONTRACTOR MUST NOTIFY LOCAL SHERWIN WILLIAMS DEALER THAT PAINT IS BEING PURCHASED FOR A FAMILY DOLLAR STORE AND PROVIDE SHERWIN WILLIAM DEALER WITH STORE LOCATION.

MATERIALS ARE TO BE APPROVED BY FAMILY DOLLAR STORE. COLORS ARE CRITICAL AND MUST BE APPROVED BY FAMILY DOLLAR STORE REPRESENTATIVE

GENERAL NOTES:

1. FAMILY DOLLAR SIGN PROVIDED AND INSTALLED BY LANDLORD. SIGN COMPANY TO PROVIDE SUPPORTS AS REQUIRED FOR SIGNAGE. ELECTRICAL SERVICE AND CONNECTIONS BY GENERAL CONTRACTOR. SIGN PULLS 19 AMPS. VERIFY WITH TENANT. GC TO COORDINATE EXACT LOCATION OF BACKING FOR SIGNAGE ATTACHMENT TO SUPPORTS WITH SIGN COMPANY.
2. DOWN SPOUT SPACING TO BE DETERMINED BY CIVIL ENGINEER, BASED ON LOCAL TYP. AND MAX. RAINFALL AMOUNTS. W/ DOWNSPOUTS PLACED EQUALLY APART TYP. NO DS. MAY BE PLACED WITHIN 12" OF A DOOR FRAME. USE A MIN. OF 3 STRAPS PER DS TYP.
3. PROVIDE CONCRETE SPLASH BLOCK AT EACH DOWNSPOUT LOCATION OR TIE INTO UNDERGROUND DRAINAGE/STORM WATER SYSTEM.
4. G.C. TO VERIFY THAT ALL STOREFRONT IS CAULKED AND SEALED AND IS WATER TIGHT
5. SPECIALTY VENDOR TO PROVIDE SHOP DRAWINGS PRIOR TO INSTALLATION OF METAL WALL PANELS RE: STRUCTURAL FOR PERFORMANCE SPECS.
6. COORDINATE MECHANICAL DUCT PENETRATIONS WITH MECHANICAL DESIGN AND PROVIDE ADDITIONAL SUPPORT FOR FRAMED OPENINGS PER METAL BUILDING VENDOR. PROVIDE METAL TRIM, FLASHING AND SEALANT PER METAL BUILDING MANUFACTURER'S INSTRUCTIONS.
7. G.C. TO PROVIDE KEY BOX FOR LOCK ACCESS DURING PUNCHOUT AND TURNOVER
8. REFER TO SHEET A103 FOR WINDOW SCHEDULE.

METAL PANEL NOTES:

1. THIS SYSTEM USES A STANDING SEAM ROOF.
2. THE "A" PANELS FOR THE SIDE AND REAR ARE ATTACHED W/ TAMPER RESISTANT SCREWS. SCREWS TO BE PAN HEAD, W/ SELF SEAL WASHER.
3. THE FRONT WALL ABOVE THE CMU USES "A" PANELS. ATTACHED W/ TAMPER RESISTANT SCREWS. SCREWS TO BE PAN HEAD, W/ SELF SEAL WASHER.
4. METAL BLDG EAVE HT. TO BE ADJUSTED AS REQUIRED TO MAINTAIN FAMILY DOLLAR STANDARD CEILING HT.

G.C. TO USE TAMPER RESISTANT SCREWS FOR ALL METAL WALL PANELS. SCREWS MUST BE FULL HT. PAN HEAD SELF-DRILLING STAINLESS STEEL SCREWS W/ SELF SEAL WASHERS OR EQUAL.

PROVIDE 20 YEAR WARRANTY WITH METAL ROOF SYSTEM

*VERIFY W/ SPECIFIC METAL BLDG CO.

EXTERIOR MOTION SENSOR SYSTEM:

- CONSISTING OF:
- ONE HORN LOCATED ON THE BACK SIDE OF THE FRONT PARAPET AS SHOWN ON REAR ELEVATION.
 - TWO STROBES LOCATED AT OPPOSITE CORNERS OF THE BLDG JUST BELOW THE PARAPET CAP AS SHOWN ON THE FRONT AND REAR ELEVATIONS.
 - FOUR MOTION SENSORS: ONE SENSOR LOCATED ON EA. SIDE OF THE BLDG. 40' FROM THE REAR WALL. TWO SENSORS ON THE REAR OF THE BLDG AT THE FIRST AND THIRD QUATER POINTS AS SHOWN.
- SEE MEP DRAWINGS FOR ADDITIONAL INFO.

GENERAL EXTERIOR NOTE:
PROVIDE SLEEVE, BOOT, OR OTHER APPROPRIATE PENETRATION MATERIAL FOR A CLEAN TRANSITION FROM EXTERIOR TO INTERIOR FOR ALL CONDUIT WIRE, PIPE, ETC. OWNER MUST APPROVE METHOD AND FINISH BEFORE BLDG COMPLETION.

GC TO PROVIDE KEY LOCK BOX ACCESS DURING PUNCH-OUT AND TURNOVER