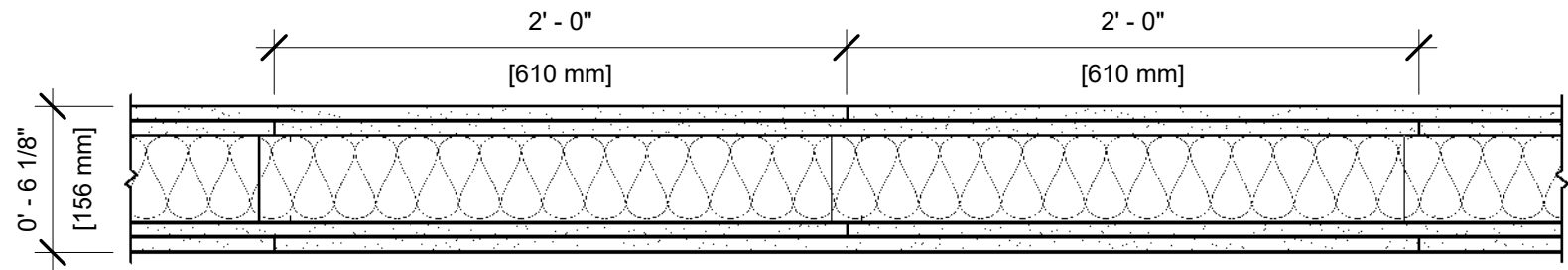


UL DESIGN NO. U419

FIRE RATING: 2 Hour
STC: 52
SOUND TEST: USG-160730
SYSTEM THICKNESS: 6 1/8"



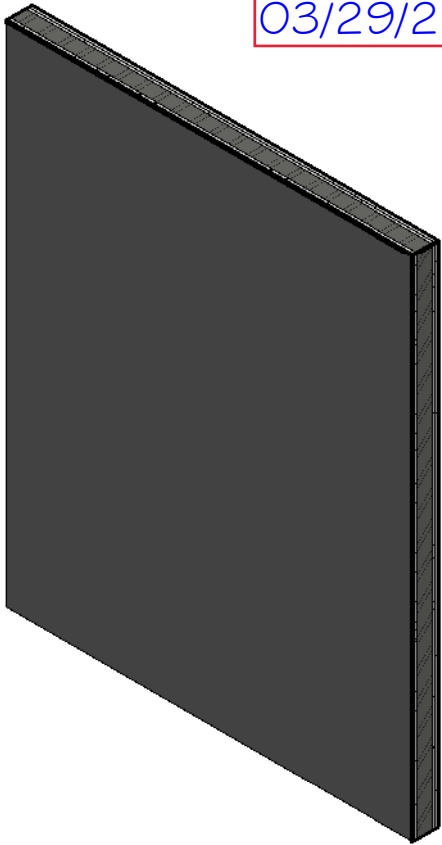
ASSEMBLY OPTIONS:

- GYPSON BOARD:** TWO LAYERS 5/8" THICK GYPSON BOARD (UL TYPE ULIX™)
- STEEL STUDS:** 3-5/8" STEEL STUDS, EQ20 (0.020"), SPACED 24" O.C.
- INSULATION:** 3 1/2" GLASS FIBER BATT INSULATION IN CAVITY
- GYPSON BOARD:** TWO LAYERS 5/8" THICK GYPSON BOARD (UL TYPE ULIX™)

Digitally signed by
Carol Chadwick
DN: c=US,
o=Florida,
dnQualifier=A014
10D0000017EB6D
924CE0005954C,
cn=Carol
Chadwick
Date: 2022.03.29
13:14:06 -04'00'

Printed copies of this document are not
considered signed and sealed and the signature
must be verified on any electronic copies.

LAKE CITY SELF STORAGE
2-HOUR FIRE WALL
FBC 2020, SECTION 707
03/29/22



NOTES:

STUD AND INSULATION SIZES ARE MINIMUM UNLESS OTHERWISE STATED IN DESIGN.

FOR THE MOST UP-TO-DATE INFORMATION OR ASSEMBLY OPTIONS, REFER TO THE UL
FIRE RESISTANCE DIRECTORY.

UL TYPE ULIX™ REQUIRES THE USE OF INSULATION FOR SINGLE-LAYER, STEEL-
FRAMED UL FIRE-RATED ASSEMBLIES.

REFER TO THE UL FIRE RESISTANCE DIRECTORY FOR INFORMATION REGARDING
PRODUCT ORIENTATION AND FASTENING REQUIREMENTS.