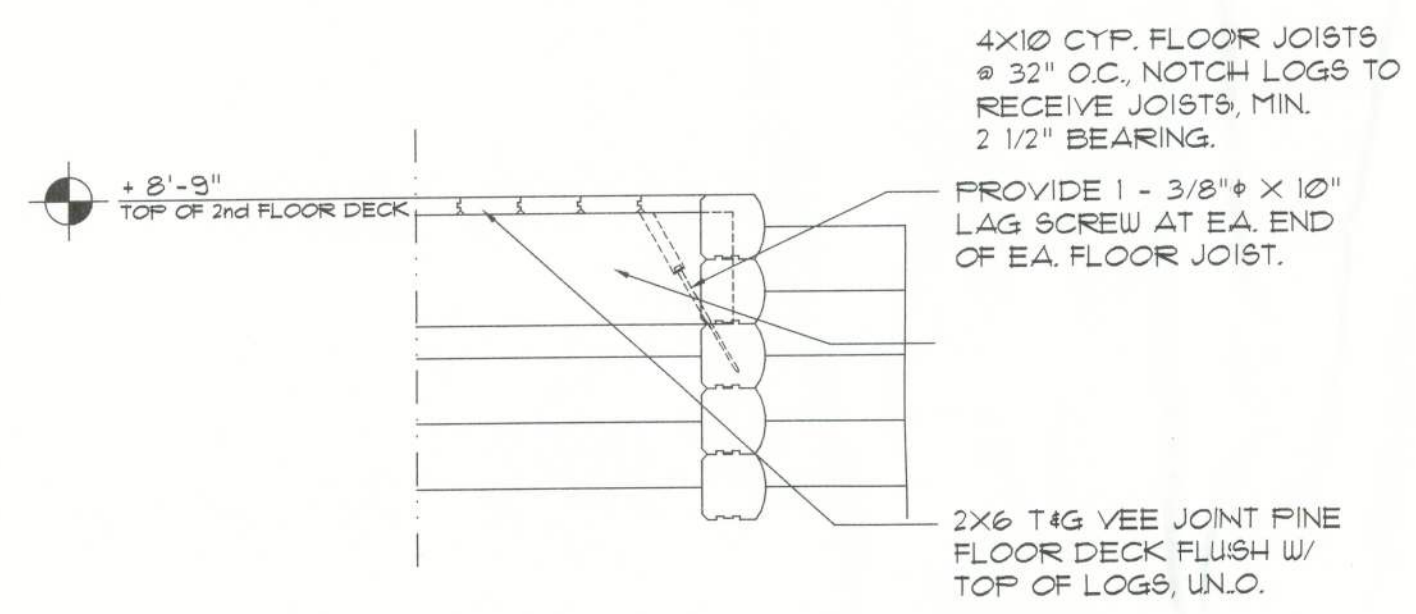
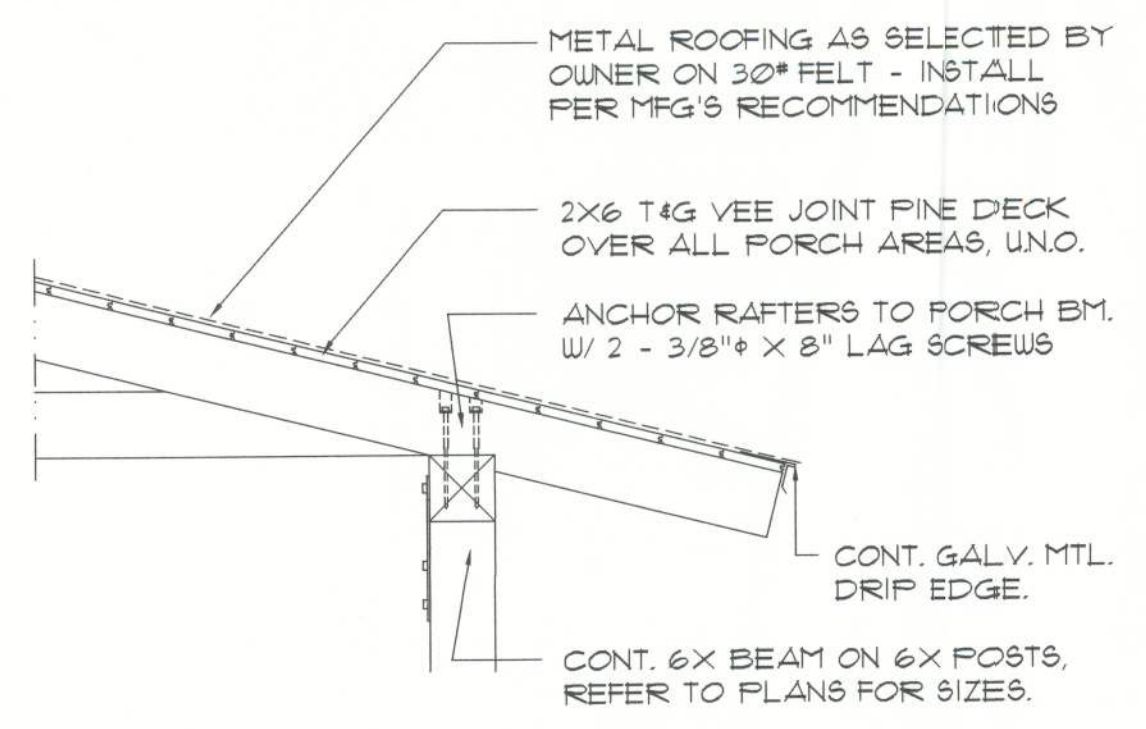


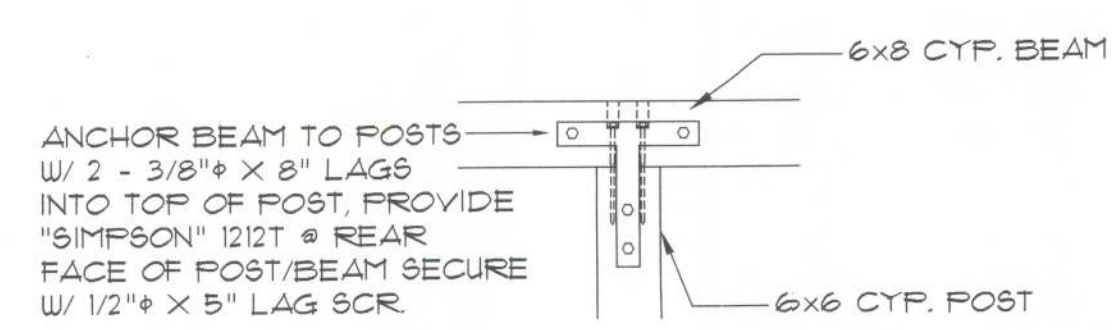
Floor Joist @ Beam DETAIL
SCALE: 3/4" = 1'-0" (C)



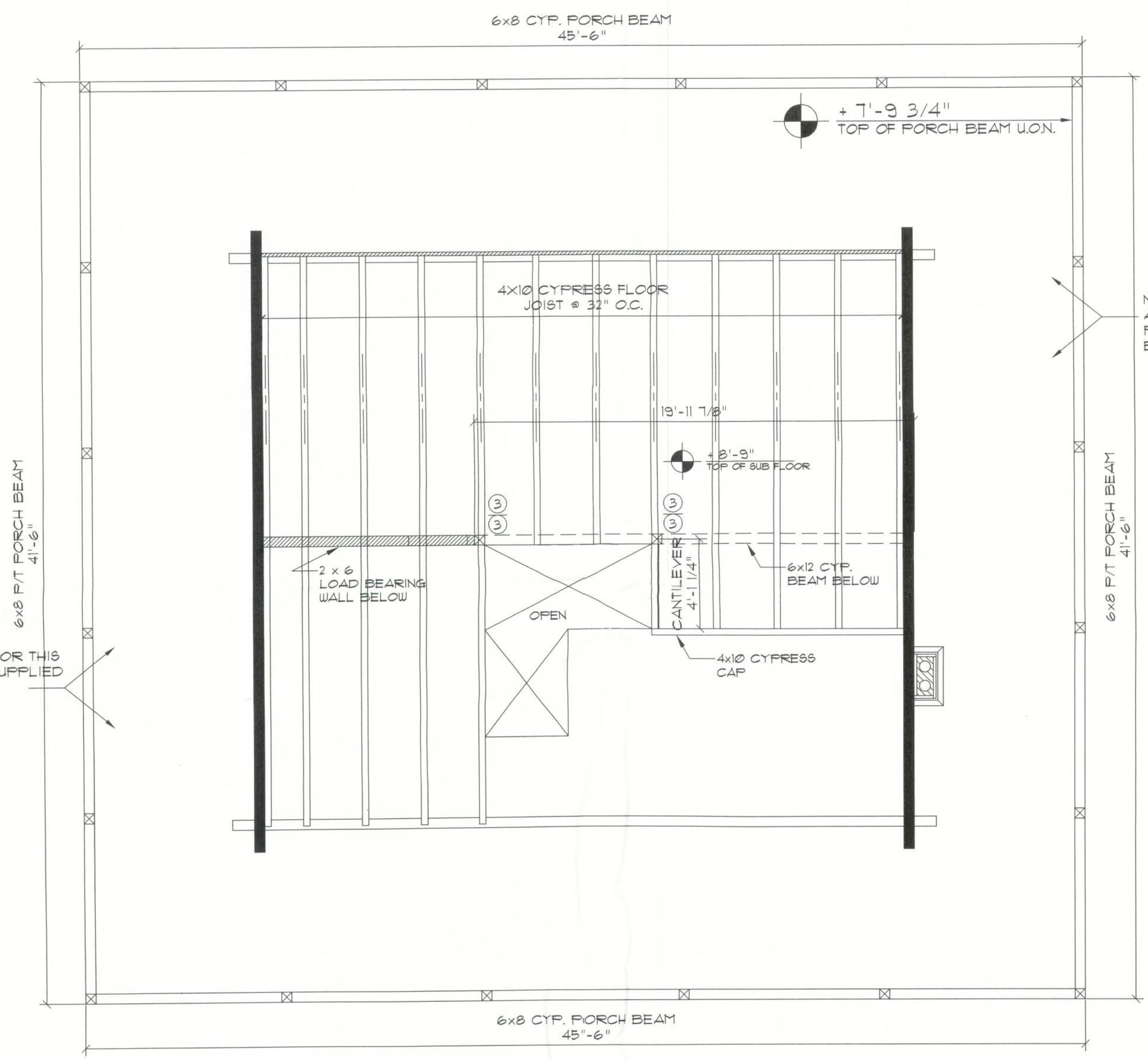
EXPOSED BEAM Joist to Log Wall DETAIL
SCALE: 3/4" = 1'-0" (D)



Rafter DET. PORCH EAVE
SCALE: 3/4" = 1'-0" (E.1)



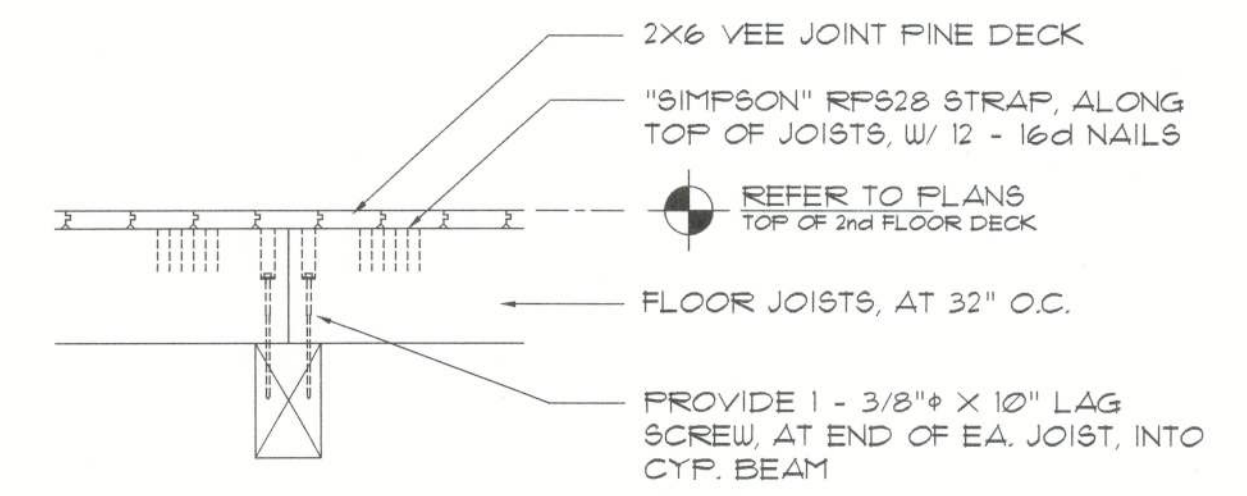
PORCH BEAM / POST DETAIL
SCALE: N.T.S. (E.2)



2nd Floor FRAMING PLAN
SCALE: 1/4" = 1' - 0"

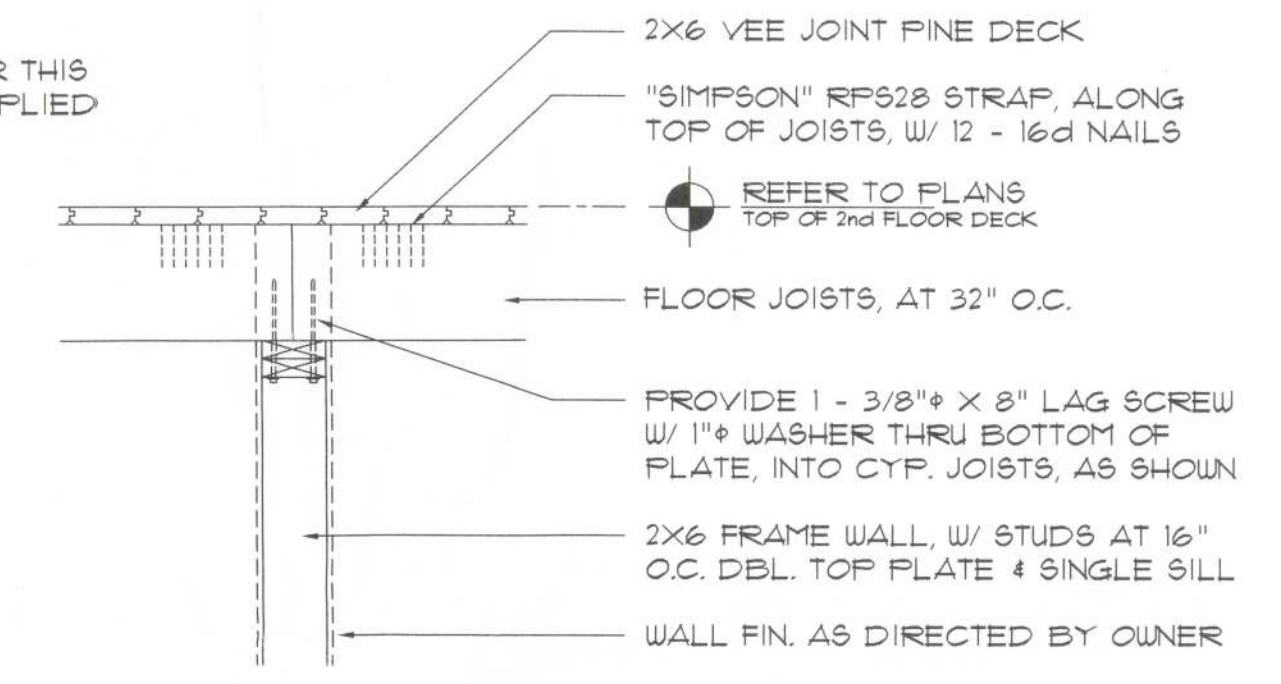
PIER / POST SCHEDULE

- ① 8" X 16" CONC. FILLED CONC. BLOCK W/ 2 #5 VERT. REBAR HOOKED TO FTG USE "O" BLOCK FOR POST ANCHOR PLACEMENT
- ② 6x6 SYP. POST
- ③ 6x6 CYPRESS POST
- ④ 4 - 2X6 BUILT-UP WOOD POST, SECURE W/ 3/8" X 6" LAG SCREWS @ 24" O.C. STAGGERED ALONG POST CL.
- ⑤ 6x6 P/T POST



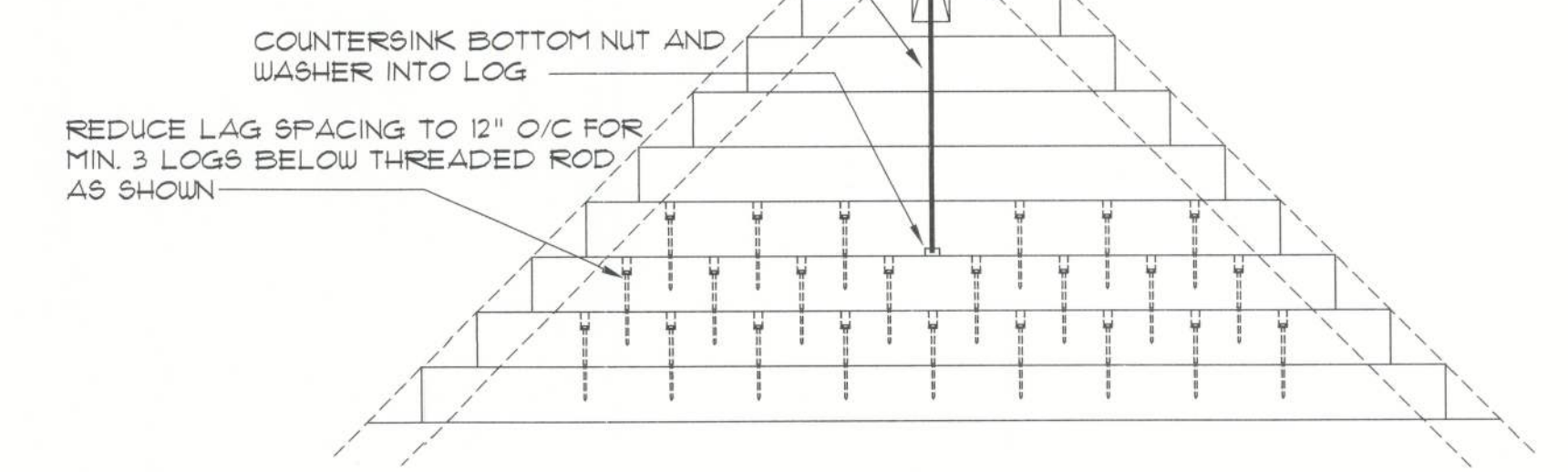
JOIST @ BEAM DETAIL
SCALE: 3/4" = 1'-0" (A)

NOTE:
ALL MATERIAL FOR THIS PORCH TO BE SUPPLIED BY THE OWNER



JOIST @ WALL F.L. JOIST @ CEN. SUPPORT
SCALE: 3/4" = 1'-0" (B)

5/8" ALL THREAD ROD THROUGH 4 WHOLE LOGS AND RIDGE BEAM MIN. W/ 2" WASHER AND NUT EACH END



Ridge Beam Anchor Detail
SCALE: N.T.S. (F)

REVISION:

DRAWN:

RJRJR

REVIEWED:

GJG

Custom Log Home for:
Lanny & Starr Jones
Columbia County, Florida

Gary J. Gill, P.E. #51942
P.O. Box 187
130 West Howard Street
Live Oak FL 32064
Phone: (386) 362-3678
Fax: (386) 362-6133
Auth. # 9461

JG
STRUCTURAL ENGINEERS

SUWANNEE RIVER LOG HOMES, INC.
Manufacturers of Custom Log Homes
Specializing in Cypress & Cedar Log Homes
4348 HIGHWAY 90 WELLSBORO, FLORIDA 32094
386-363-1068 FAX 386-364-1171 1200-364-1068-1171

DATE:

25FEB05

CONTRACT:

L04123

SHEET:

A.9

9 of 11

Label
2/25/05