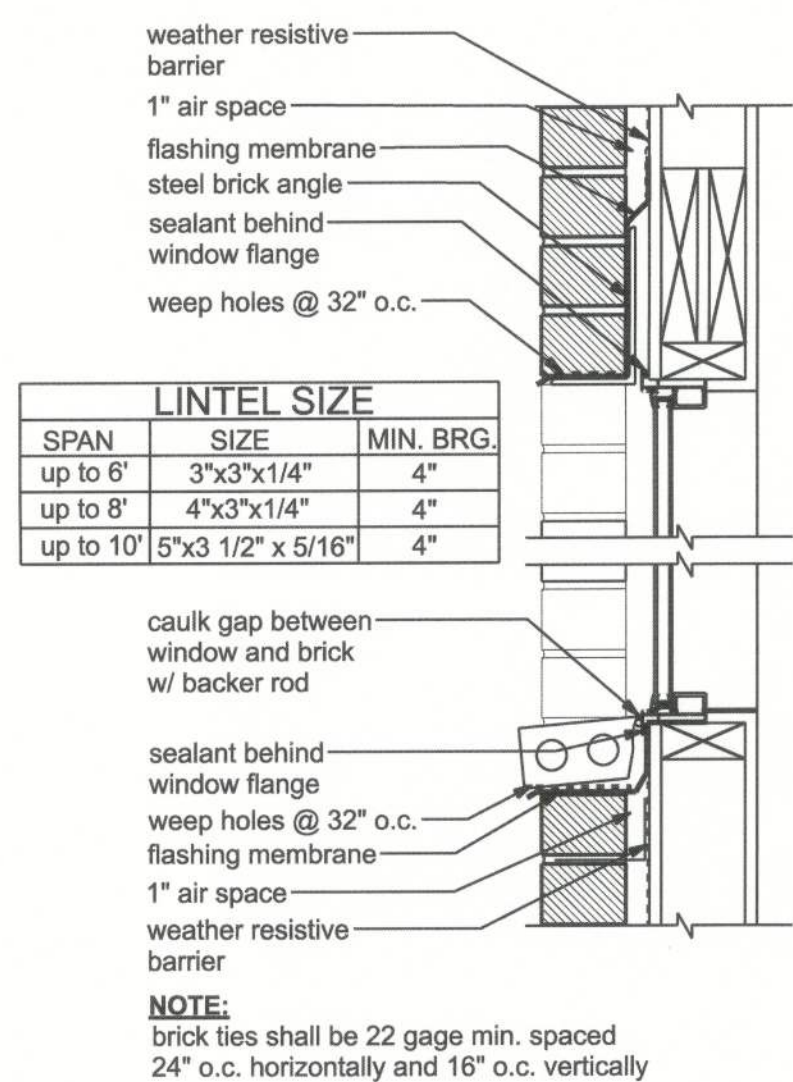
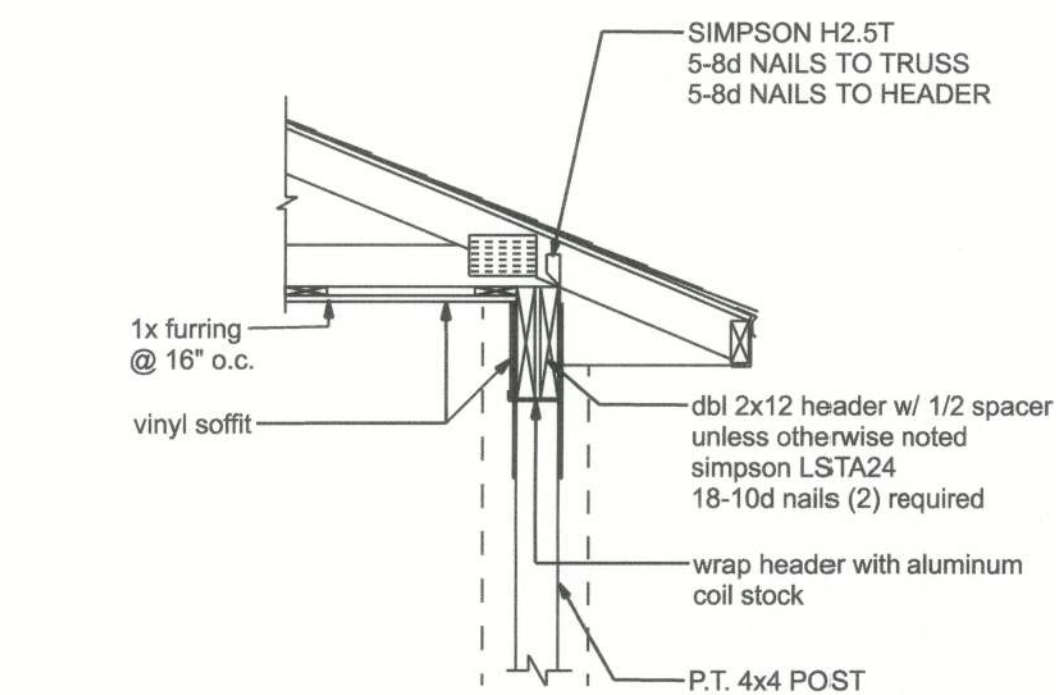


**TYPICAL WALL SECTION**  
SCALE: 3/4" = 1'-0"

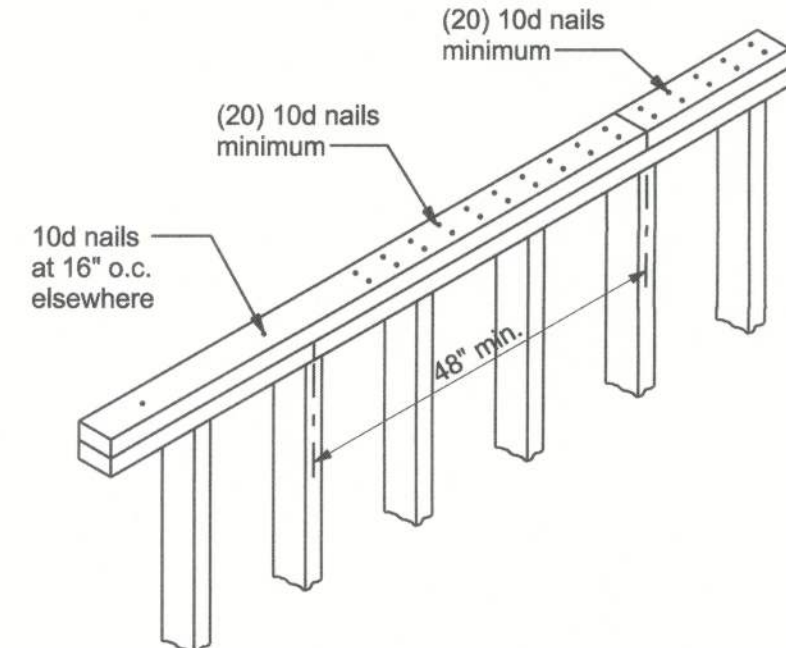


**BRICK FLASHING**  
SCALE: 1 1/2" = 1'-0"

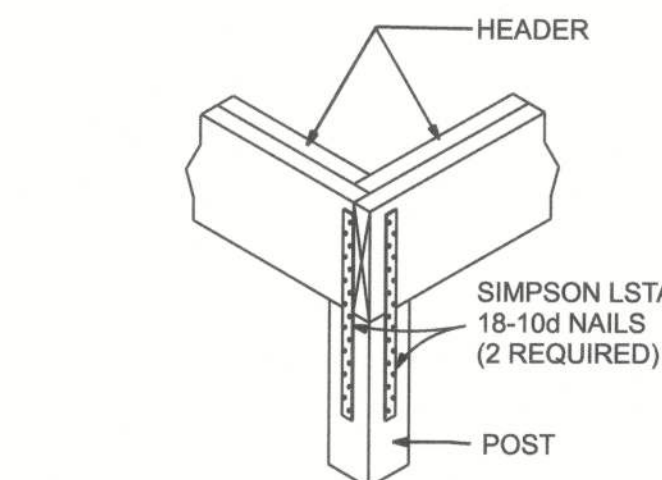
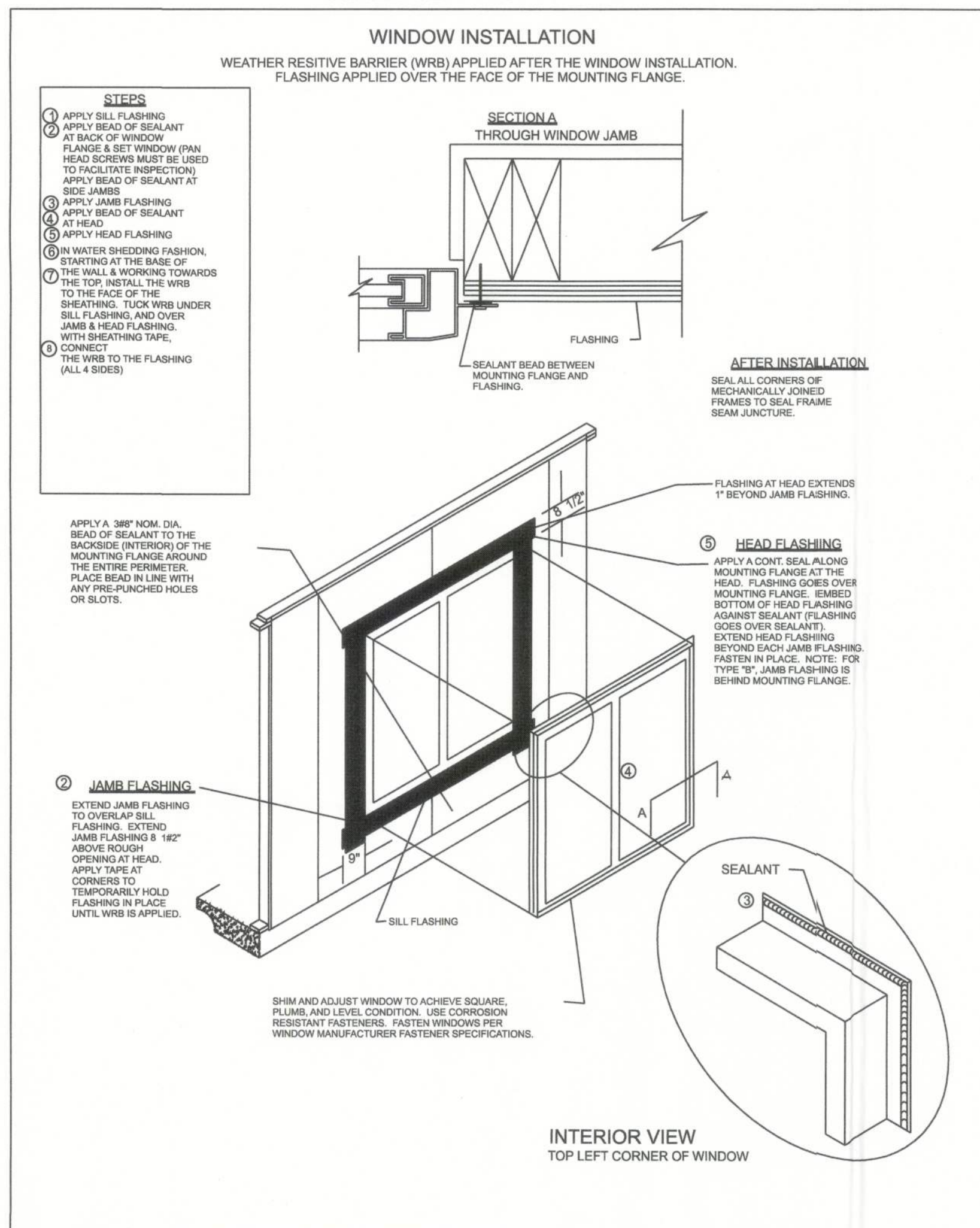
| LINTEL SIZE |                   |           |
|-------------|-------------------|-----------|
| SPAN        | SIZE              | MIN. BRG. |
| up to 6'    | 3"x3"x1/4"        | 4"        |
| up to 8'    | 4"x3"x1/4"        | 4"        |
| up to 10'   | 5"x3 1/2" x 5/16" | 4"        |



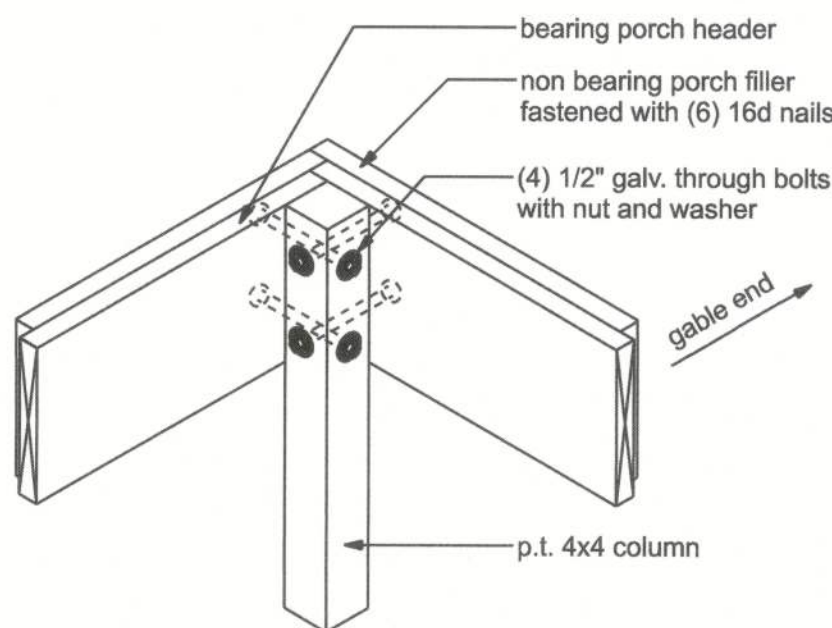
**PORCH SECTION**  
SCALE: 3/4" = 1'-0"



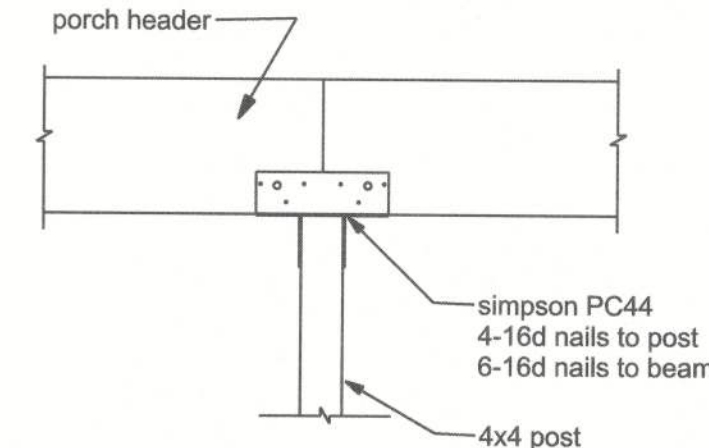
**TOP PLATE SPLICE DETAILS**  
SCALE: 1/2" = 1'-0"



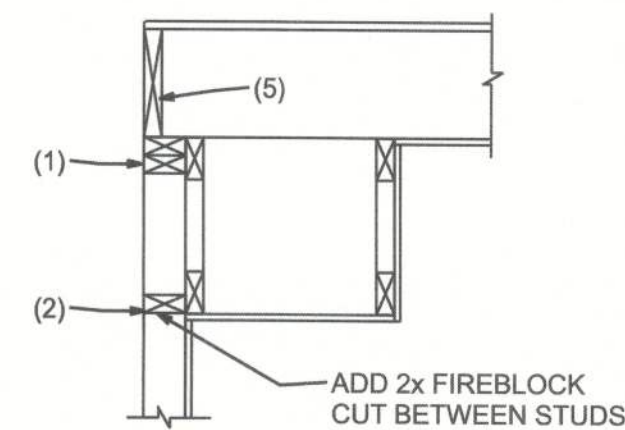
**CORNER POST/HEADER DETAIL**  
NTS



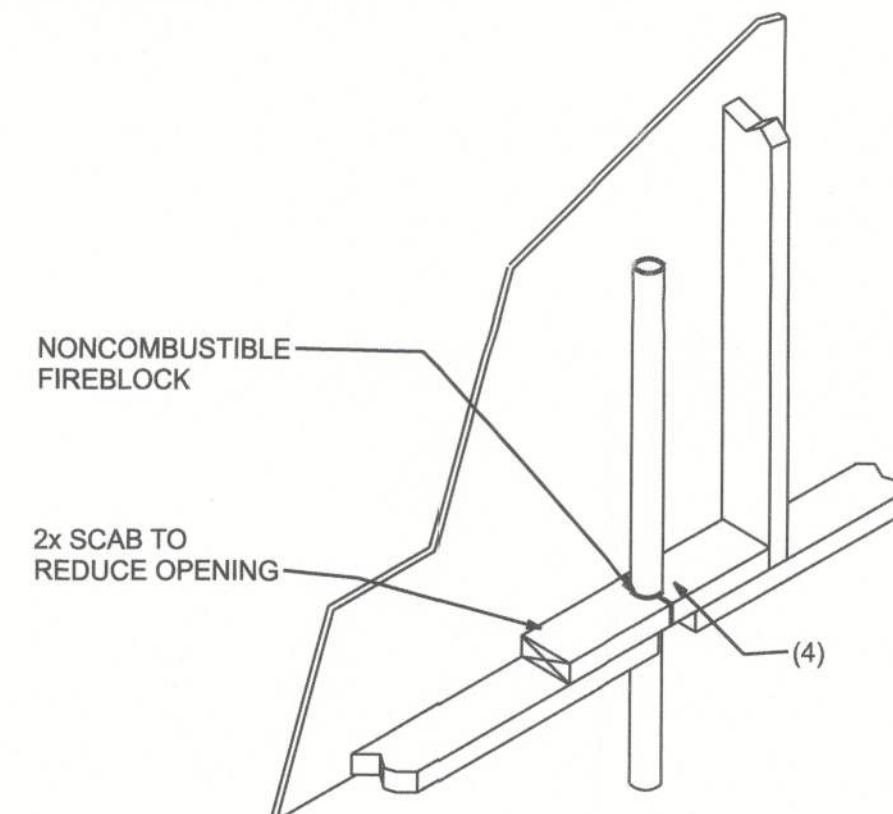
**CORNER POST (front porch option)**  
NTS



**INTERMEDIATE POST**  
NTS (OPTION 2)



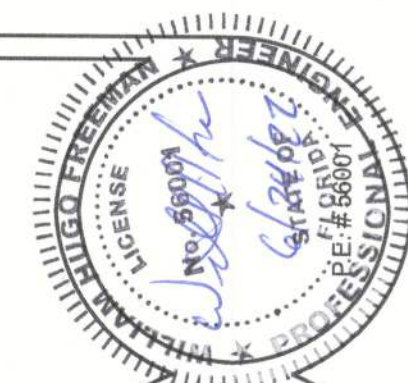
**SOFFIT/DROPPED CLG.**



**PENETRATIONS**

**FIREBLOCKING NOTES:**

- FIREBLOCKING SHALL BE INSTALLED IN WOOD FRAME CONSTRUCTION IN THE FOLLOWING LOCATIONS:
1. IN CONCEALED SPACES OF STUD WALLS AND PARTITIONS INCLUDING FURRED SPACES AT CEILING AND FLOOR LEVELS.
  2. AT ALL INTERCONNECTIONS BETWEEN CONCEALED VERTICAL AND HORIZONTAL SPACES SUCH AS OCCUR AT SOFFITS, DROP CEILINGS, COVE CEILINGS, ETC.
  3. IN CONCEALED SPACES BETWEEN STAIR STRINGERS AT THE TOP AND BOTTOM OF THE RUN.
  4. AT OPENINGS AROUND VENTS, PIPES, DUCTS, CHIMNEYS AND FIREPLACES AT CEILING AND FLOOR LEVELS WITH PYROPANEL MULTIFLEX SEALANT
  5. AT ALL INTERCONNECTIONS BETWEEN CONCEALED VERTICAL STUD WALL OR PARTITION SPACES AND CONCEALED SPACES CREATED BY AN ASSEMBLY OF FLOOR JOISTS, FIREBLOCKING SHALL BE PROVIDED FOR THE FULL DEPTH OF THE JOISTS AT THE ENDS AND OVER THE SUPPORTS.



**REYNA AND POOLE HOUSE**  
**FRAMING DETAILS**

P.O. BOX 860125  
ST. AUGUSTINE, FL. 32086  
(904) 429-7536  
C.O.A. # 33259



DATE  
6/24/22

DRAWN BY  
W.H.F.

APPROVED  
W.H.F.

REVISIONS

SHEET  
A-7

OF  
9

PROJECT NO.  
21.R048