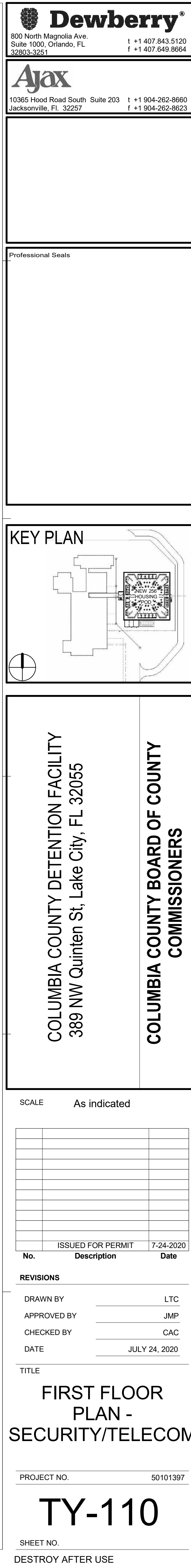
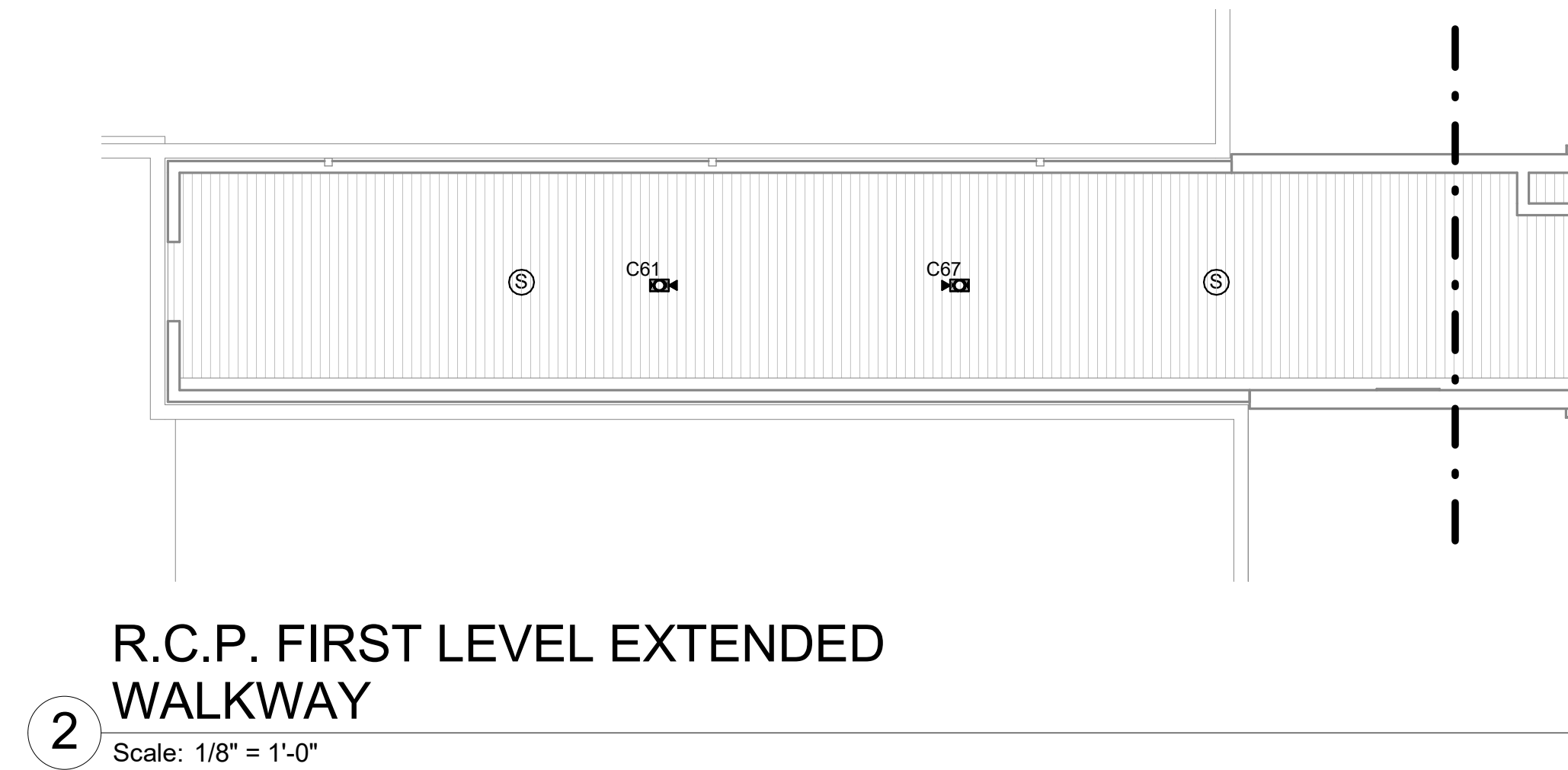




1. EXTERNAL CAMERA SC17 IS ASSOCIATED WITH ALTERNATE BID NUMBER 5 STATING:
 1. **BASE BID:** PROVIDE SLAB ON GRADE AT EXTERIOR DOOR C158A
 2. **ALTERNATE:** PROVIDE EXTERIOR SECURED FENCED IN RECY YARD WITH 4" CONCRETE SLAB ON GRADE; DETENTION GRADE ADA TOILET/SINK COMBI UNIT; DET GRAB BARS; DETENTION GRADE ADA HULO CHILLED WATER DRINKING FOUNTAIN; 8" CMU PRIVACY WALLS AT TOILET.
2. DATA CABLES SUPPORTING CAMERAS SC15 AND SC18 TO BE RAN TO THE EXISTING DATA ROOM IN THE ADMIN STORAGE AREA. THESE CABLES TO BE TERMINATED TO THE NEW CCTV PATCH PANEL AND CONNECTED TO THE NEW POE DATA SWITCH IN THE ADMIN STORAGE AREA.
3. DATA CABLE SUPPORTING SC17 TO BE RAN TO THE NEW SEC./DATA ROOM C206. THIS CABLE TO BE TERMINATED TO THE NEW CCTV PATCH PANEL AND CONNECTED TO THE NEW POE DATA SWITCH IN ROOM C206
4. ALL CABLES USED WITHIN BRIEDED CONDUIT MUST BE OUTSIDE PLANT RATED.
5. SEE SHEET Y7-602, CCTV CAMERA SCHEDULES , FOR CAMERA TYPES AND SPECIFICATION SECTIONS

[illegible]



[illegible]

GENERAL NOTES:

- CELL CONDUITS FOR OVERHEAD LIGHTING, NIGHT LIGHTING, INTERCOM AND LOCK CONTROL, TO BE RAN TO BACK OF CELL. CELL CONDUIT SHALL BE RUN TO THE BACK OF THE CELL, THROUGH ENCLOSURE, LOCKING ENCLOSURE WILL BE CENTERED ON BLOCK OF CELLS. ALL CELL CONDUIT IN THIS PARTICULAR BLOCK WILL BE RUN TO THE BACK OF THE CELL, THROUGH ENCLOSURE, LOCKING ENCLOSURE WILL BE CENTERED ON BLOCK OF CELLS. ALL CELL CONDUIT TO UPPER TIER SECURITY DATA CLOSET C206. SEE SECURITY DETAILS FOR FURTHER INFORMATION.
- ALL INTERCOM LOCATIONS WITHIN DETENTION CELLS TO FOLLOW ALTERNATE BID #4 STATED AS:
- INTERCOM: PRECAST CONCRETE CELL LOCATION, INTERCOM, BACK BOX AND CONDUIT IS NOT REQUIRED. (OMIT FROM DESIGN)
- ALL INTERCOM PRECAST ONLY CELLS AND BACK BOX TO FOLLOW INTERMATE INTERCOMS AT EACH PRECAST CELL LOCATIONS
- SEE SHEET TV-602, CCTV CAMERA SCHEDULES, FOR CAMERA TYPES AND SPECIFICATION SECTIONS

SHEET KEYNOTE

- ① LOCKING ENCLOSURES. RUN ALL CELL SECURITY LIGHTING CONTROL, LOCKING CONTROL AND INTERCOM CABLES TO THIS LOCATION.

1 SECURI
Scale: 1/8" = 1'-0'

KEY PLAN



COLUMBIA COUNTY BOARD OF COUNTY COMMISSIONERS

SCALE As indicated

[illegible]

REVISIONS

DRAWN BY	LTC
APPROVED BY	JMP
CHECKED BY	CAC
DATE	JULY 24, 2020

TITLE





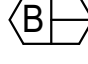





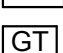








UPPER TIER -
R.C.P. -
SECURITY/TELECOM

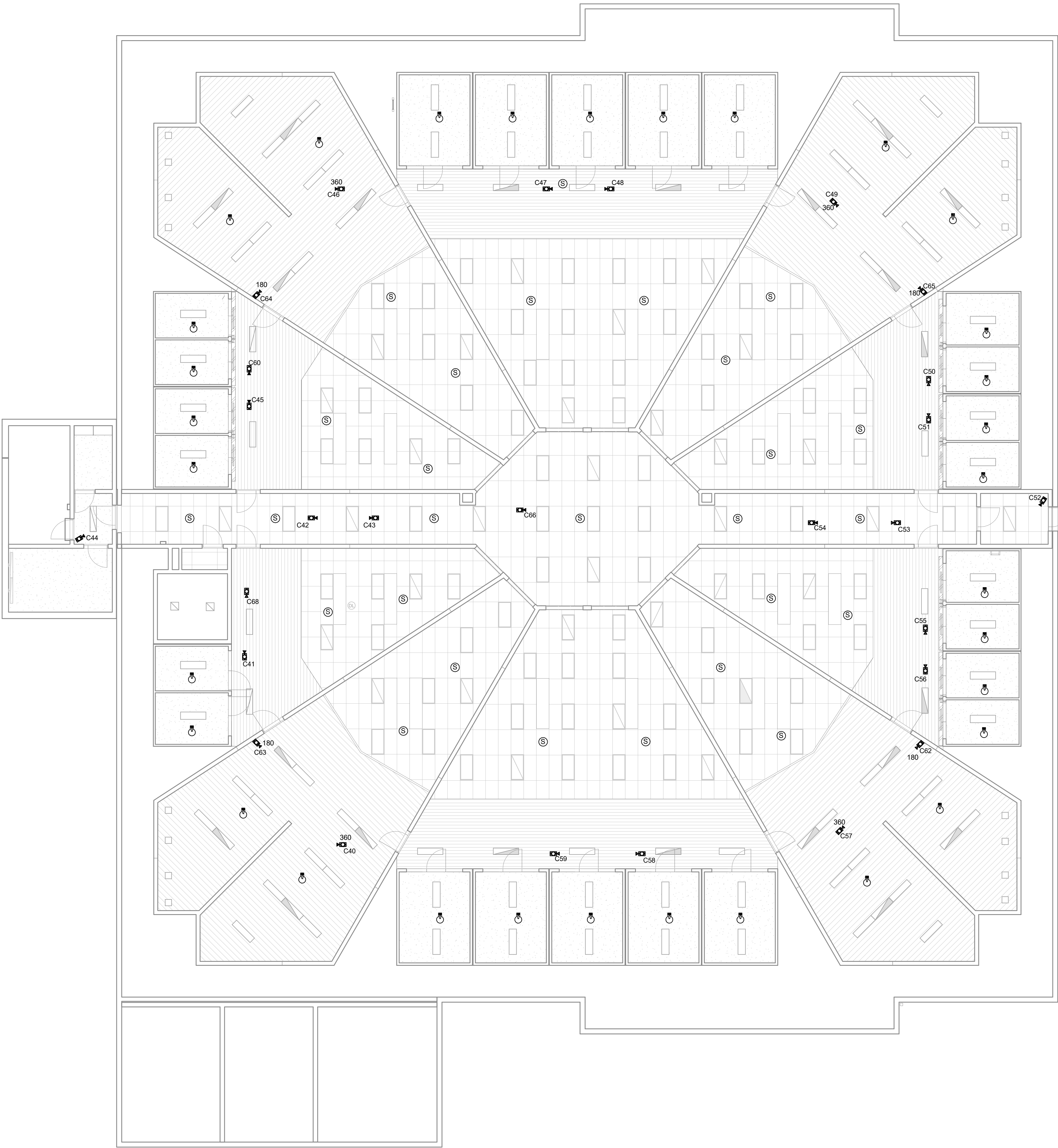
PROJECT NO.	50101397
-------------	----------

TY-124

SHEET NO.

DESTROY AFTER USE

SYMBOL	DESCRIPTION
	CONTROLLED AND MONITORED DETENTION DOOR.
	CONTROLLED AND MONITORED COMMERCIAL DOOR.
	CONTROLLED GATE OPERATOR.
	CONTROLLED AND MONITORED SLIDING DOOR DEVICE.
	MONITORED DETENTION DOOR
	INTERCOM SUB-STATION WITH CALL BUTTON.
	INTERCOM MASTER STATION.
	DURESS ALARM PUSH BUTTON.
	DOOR INTERLOCK FUNCTION.
	TOUCH SCREEN CONTROL LOCATION.
	GUARD TOUR PROXIMITY READER.
MONITOR	WALL MOUNTED LARGE FORMAT SURVEILLANCE MONITOR.
VMS	VIDEO MANAGEMENT WORK STATION.
	NEW FIXED CCTV CAMERA. (NUMERICAL NEXT TO ICON DENOTES 180 DEGREE OR 360 DEGREE CAMERA.)
	CEILING MOUNTED PAGING SPEAKER.
	UTILITY CONTROL CIRCUIT FOR TELEVISION POWER.
	LIGHTING CONTROL.
	INMATE TELEPHONE CONTROL. INCLUDES ROUGHIN.
	VIDEO VISITATION STATION; INCLUDES ROUGHIN
	WALL MOUNTED TELECOMMUNICATIONS OUTLET
	CATV OUTLET



1 UPPER TIER RCP
Scale: 1/8" = 1'-0"

Scale: 1/8" = 1'-0"



UPPER TIER PLAN -
SECURITY/TELECOM - ROVER
STATION - L.S.P.

UPPER TIER PLAN -
SECURITY/TELECOM - SEC./DATA
RM C206 - L.S.P.

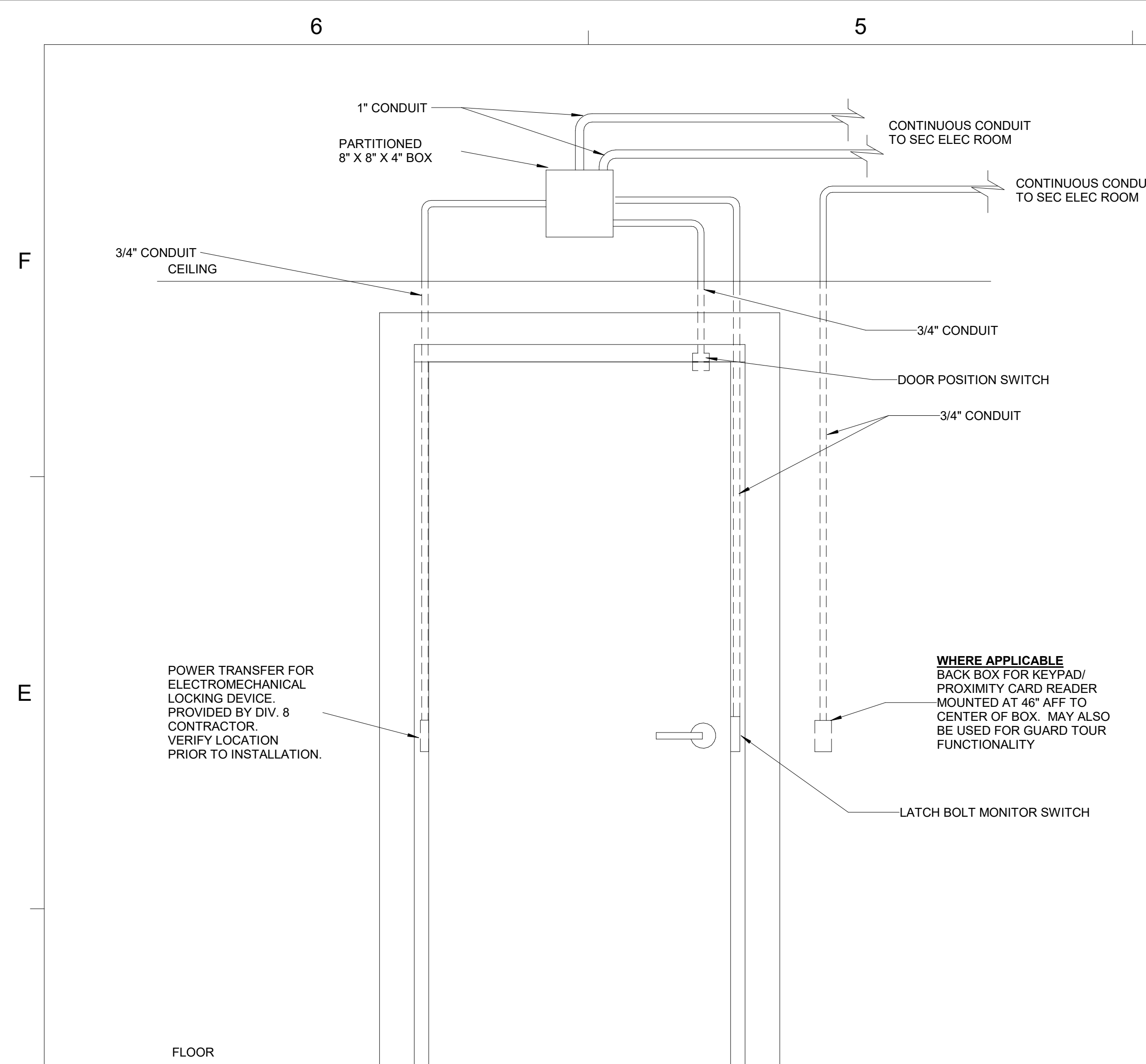
NOTE: DIAGRAM IS FOR INFORMATION ONLY.
OWNER TO DETERMINE RACKS AND EQUIPMENT
REQUIRED FOR ITS TELECOM NEEDS.

COLUMBIA COUNTY BOARD OF COUNTY COMMISSIONERS

TY-201

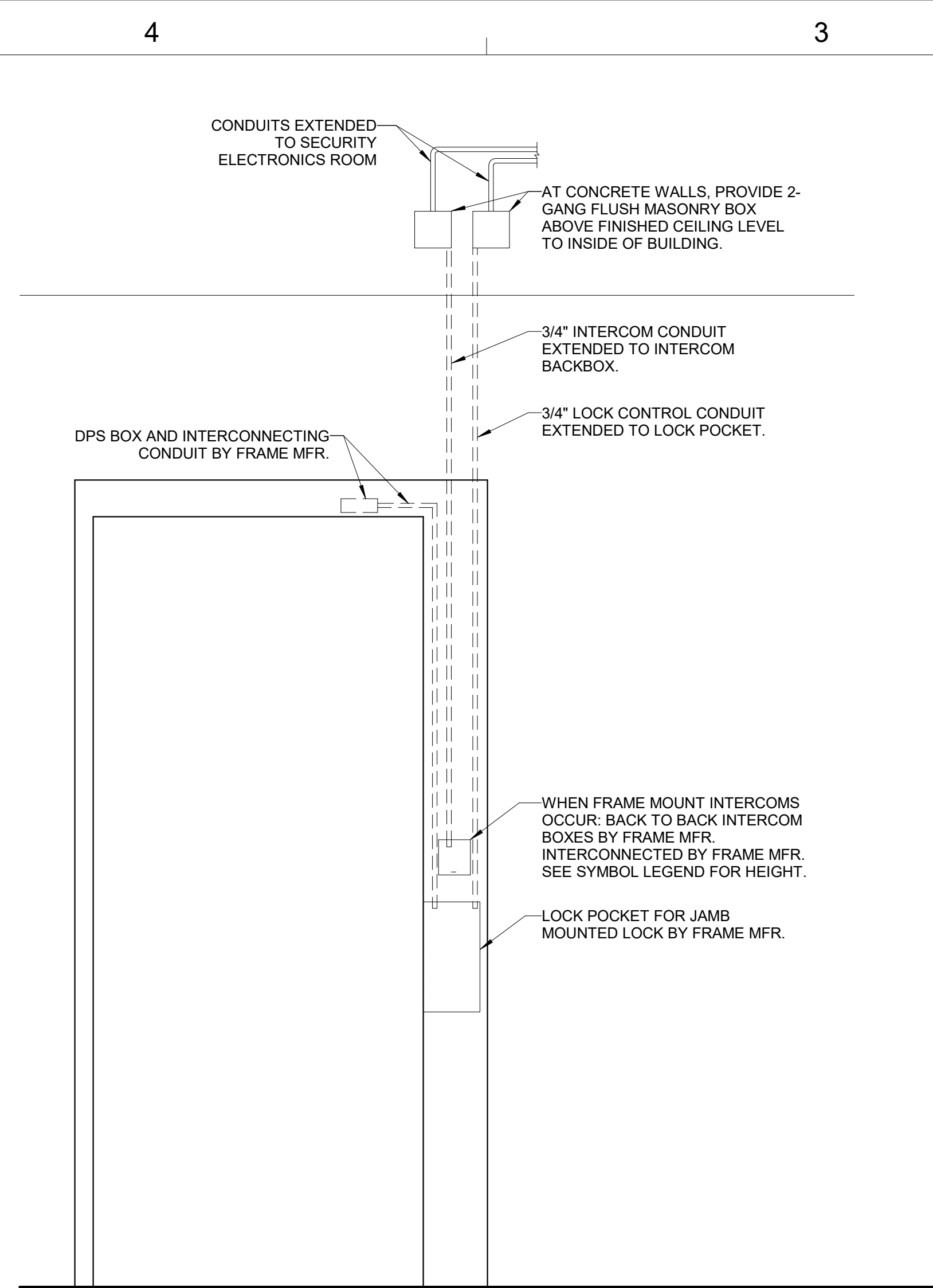
SHEET NO. _____

DESTROY AFTER USE



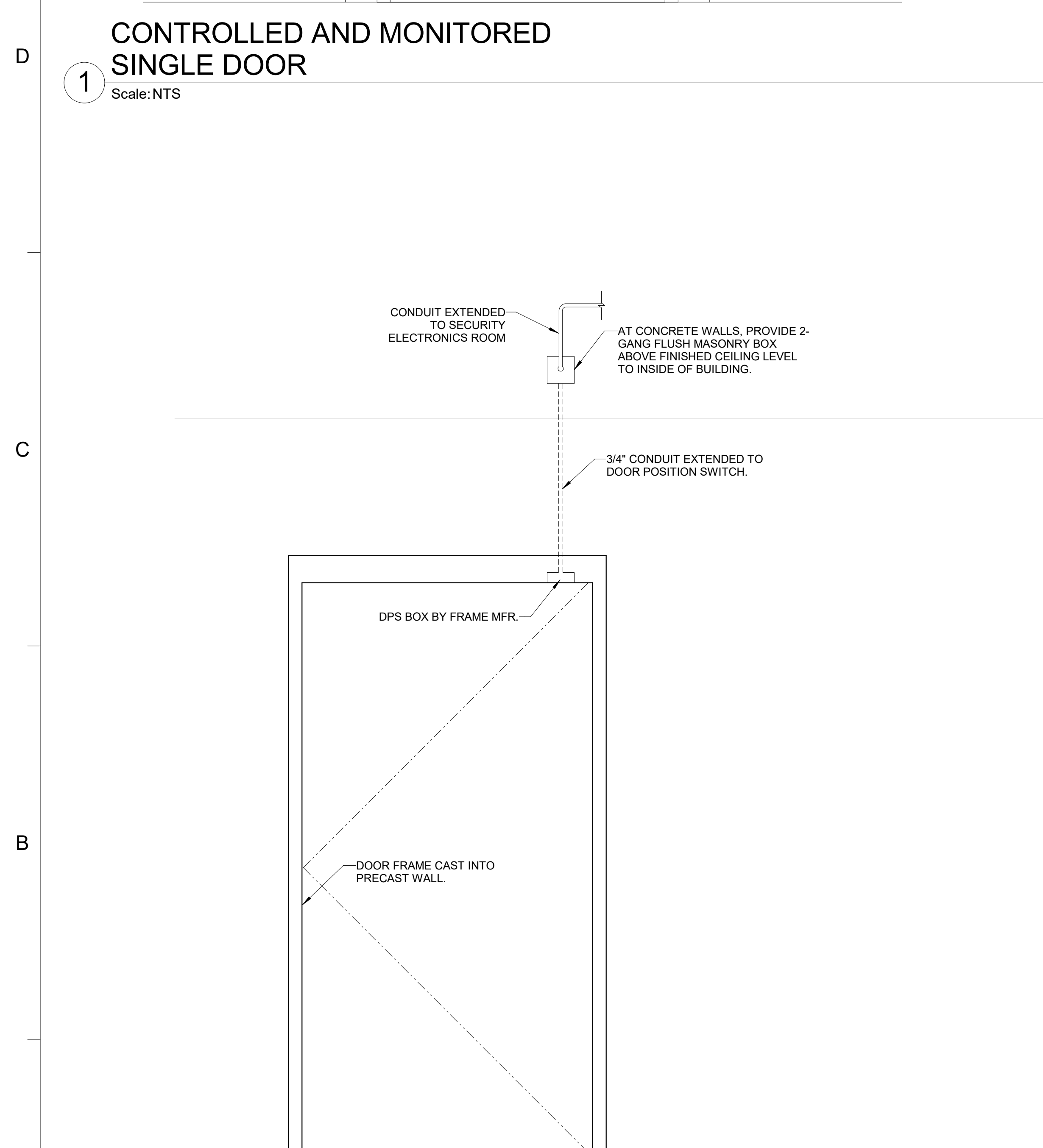
CONTROLLED AND MONITORED SINGLE DOOR

Scale: NTS



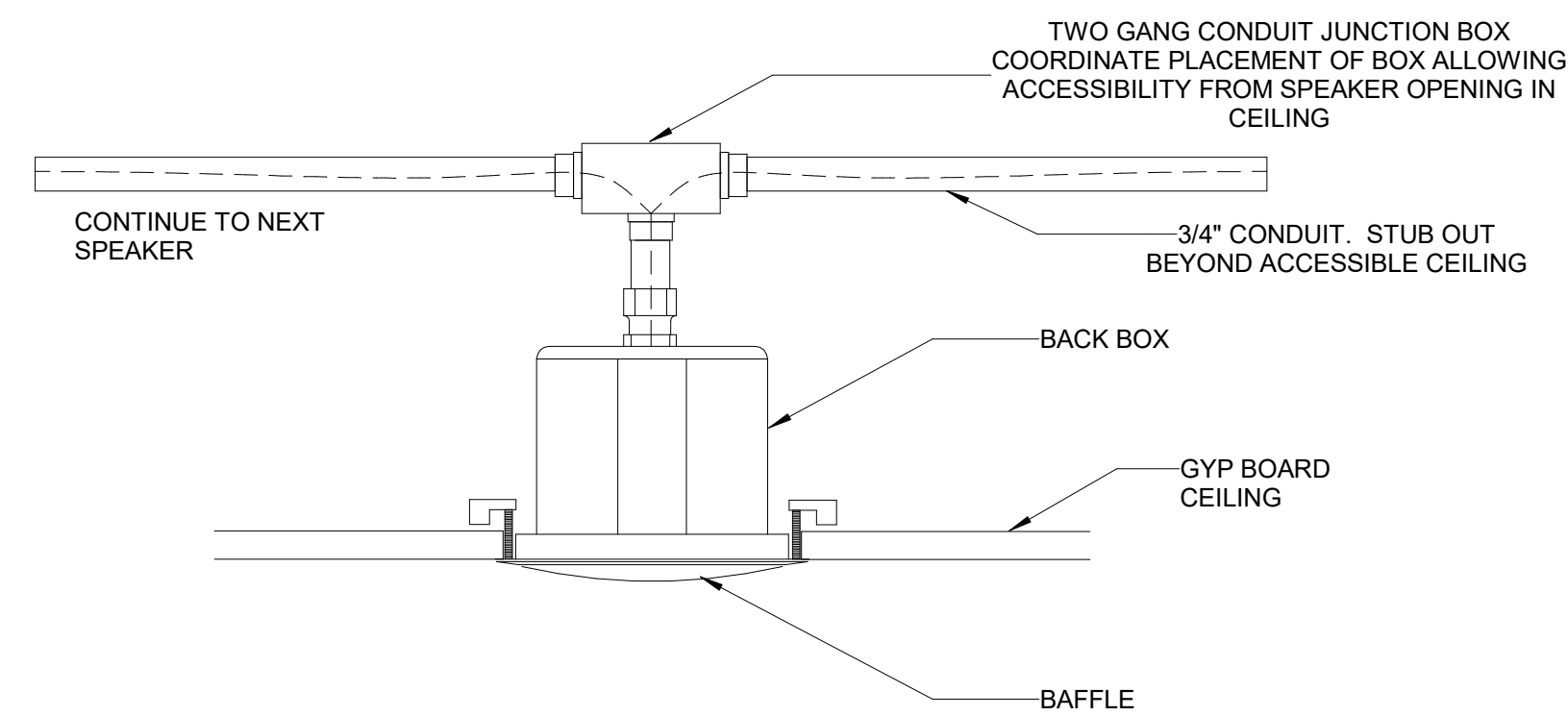
CONTROLLED DETENTION DOOR WITH INTERCOM

Scale: NTS



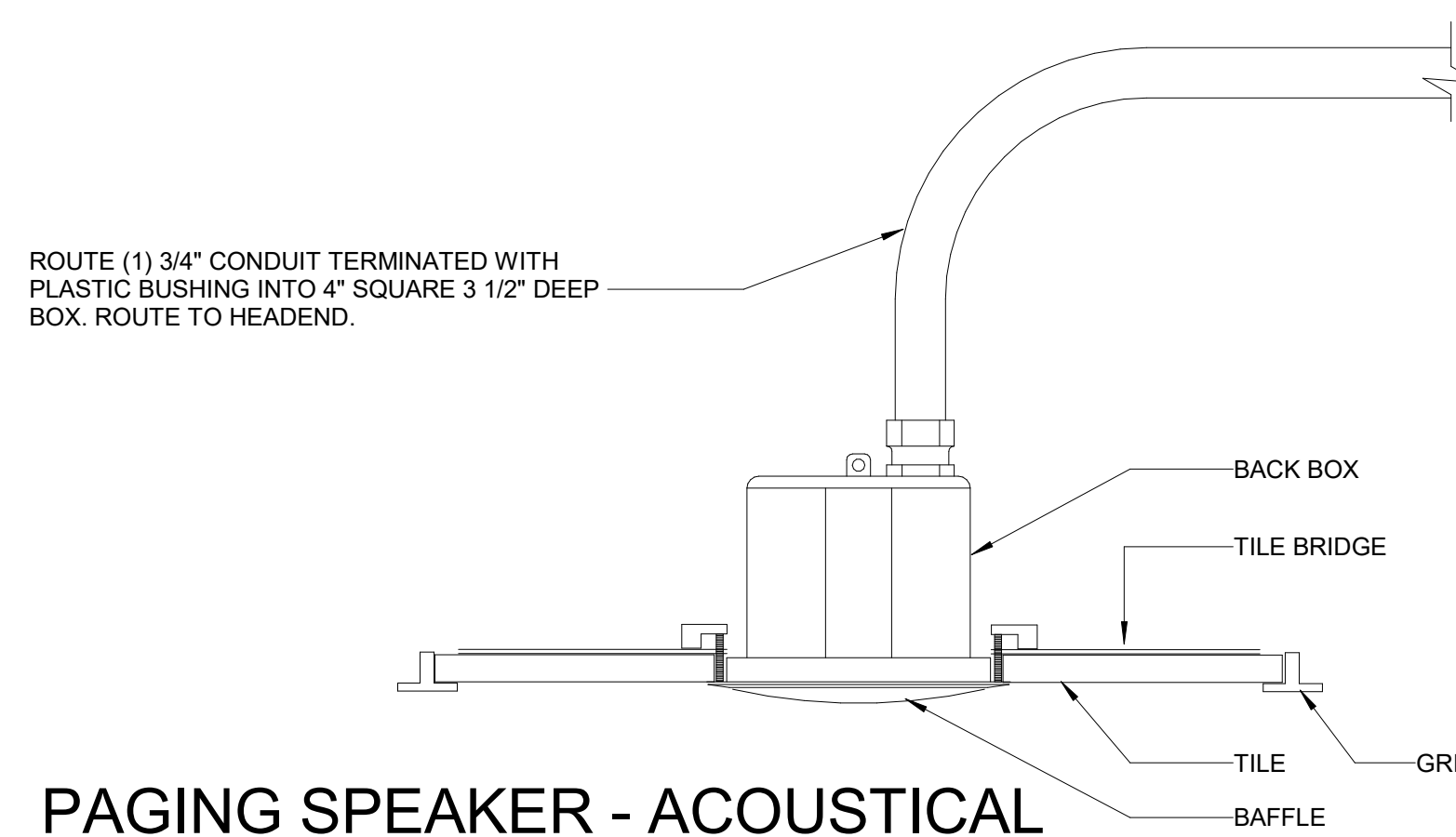
1 MONITORED DETENTION DOOR

Scale: NTS



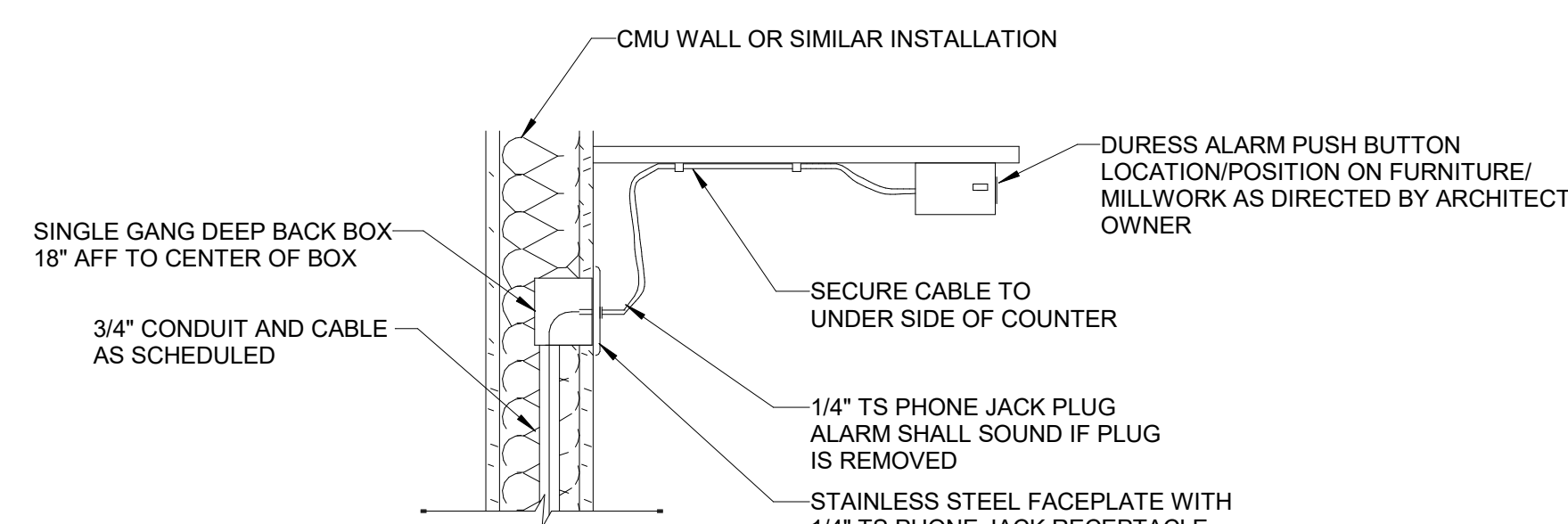
PAGING SPEAKER - FIXED CEILING - DETAIL

Scale: NTS



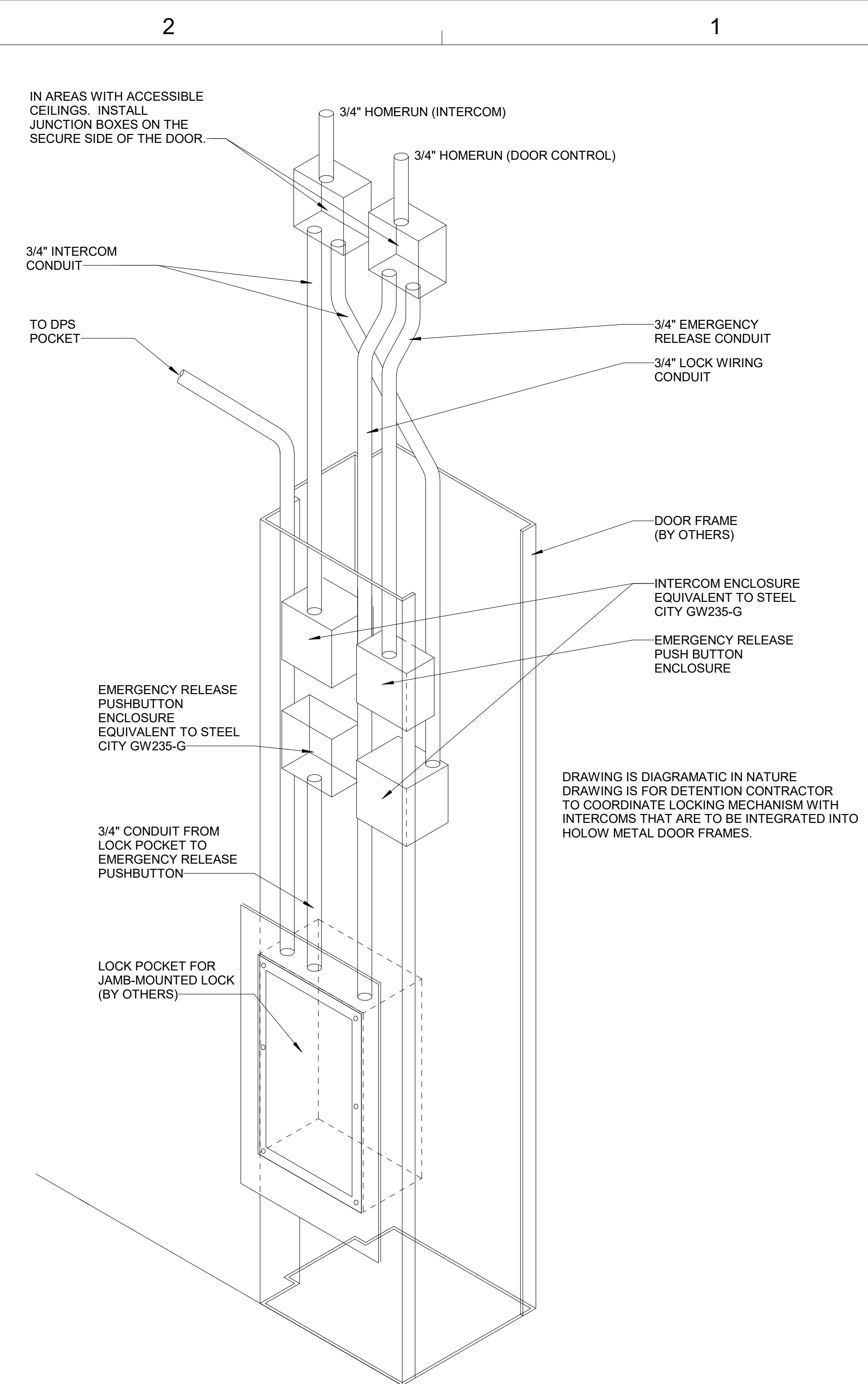
PAGING SPEAKER - ACOUSTICAL
CEILING - DETAIL

Scale: NTS



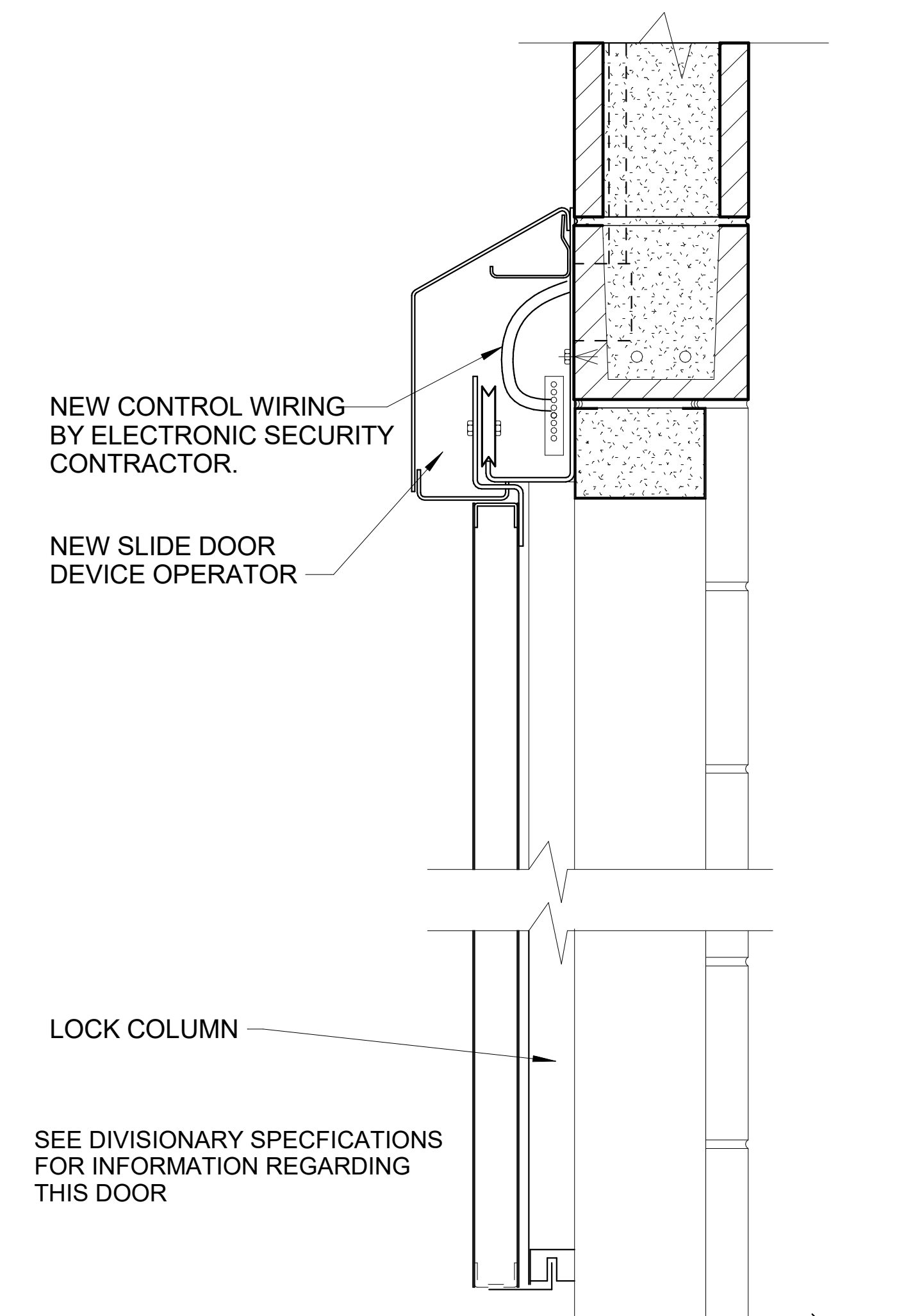
3 DURESS/PANIC ALARM - DETAIL

Scale: NTS



TYPICAL JAMB MOUNTED LOCK AND INTERCOM

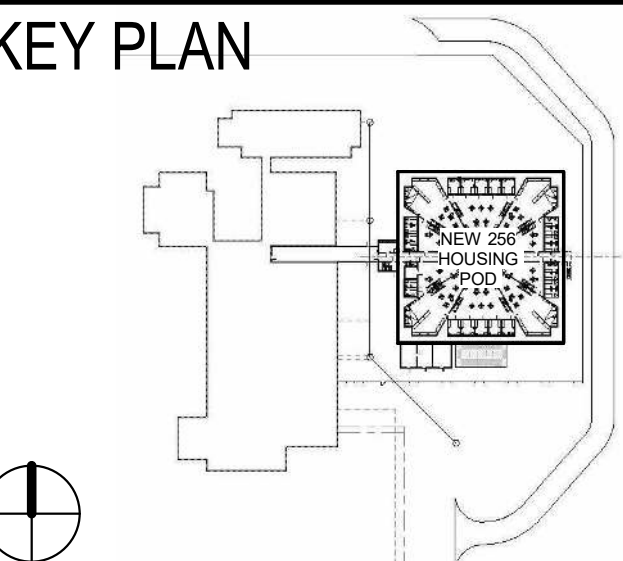
Scale: NTS



8 SLIDING DOOR DEVICE DETAIL

Scale: NTS

Professional Seals



COLUMBIA COUNTY DETENTION FACILITY
389 NW Quinten St, Lake City, FL 32055

COLUMBIA COUNTY BOARD OF COUNTY COMMISSIONERS

SCALE As indicated

[illegible]

REVISIONS

DRAWN BY	LTC
APPROVED BY	JMP
CHECKED BY	CAC
DATE	JULY 24, 2020

TITLE

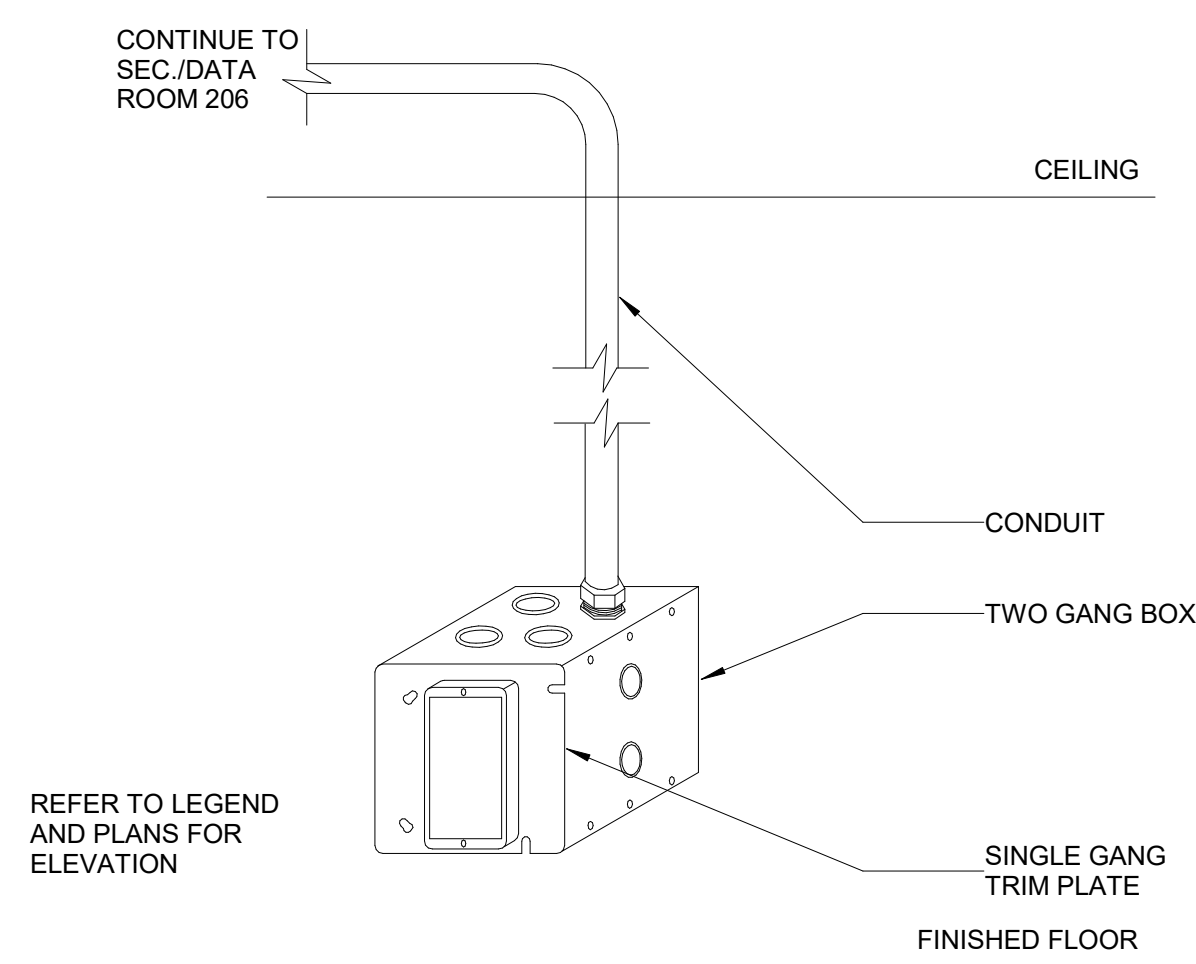
DETAILS -
SECURITY/TELECOM

PROJECT NO.	50101397
-------------	----------

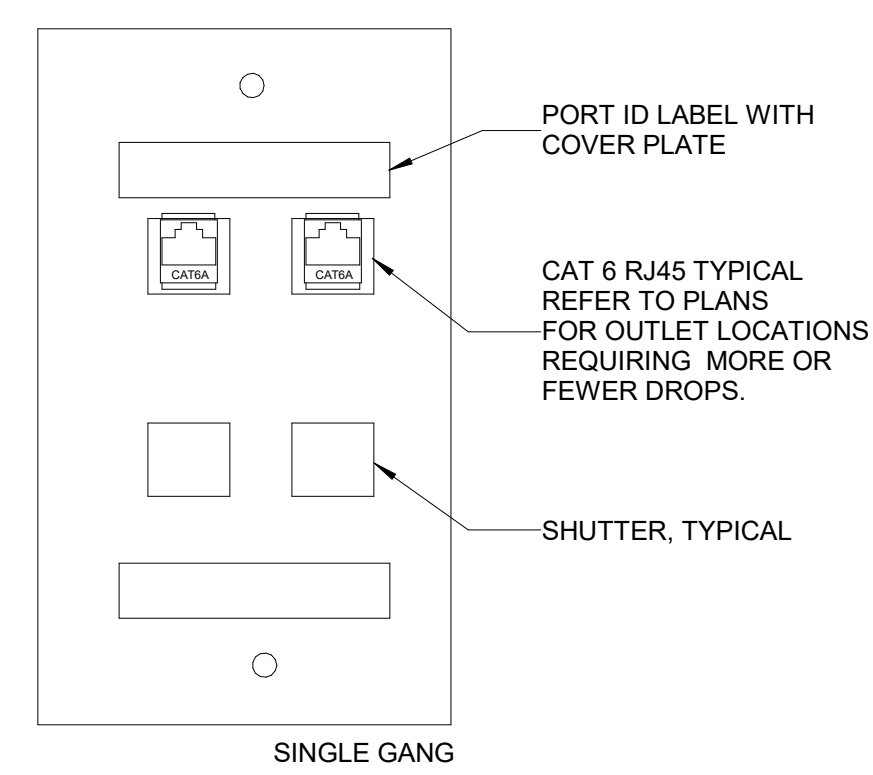
TY-301

SHEET NO.

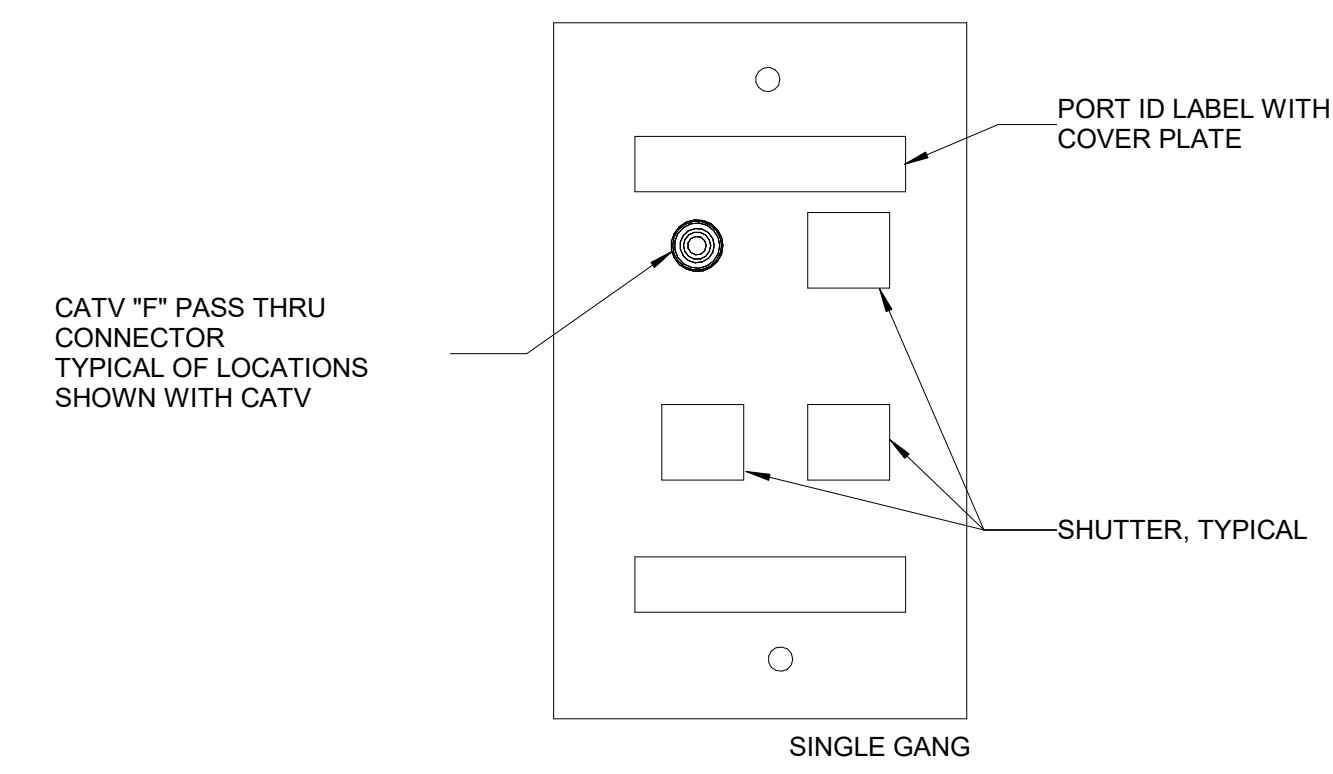
DESTROY AFTER USE



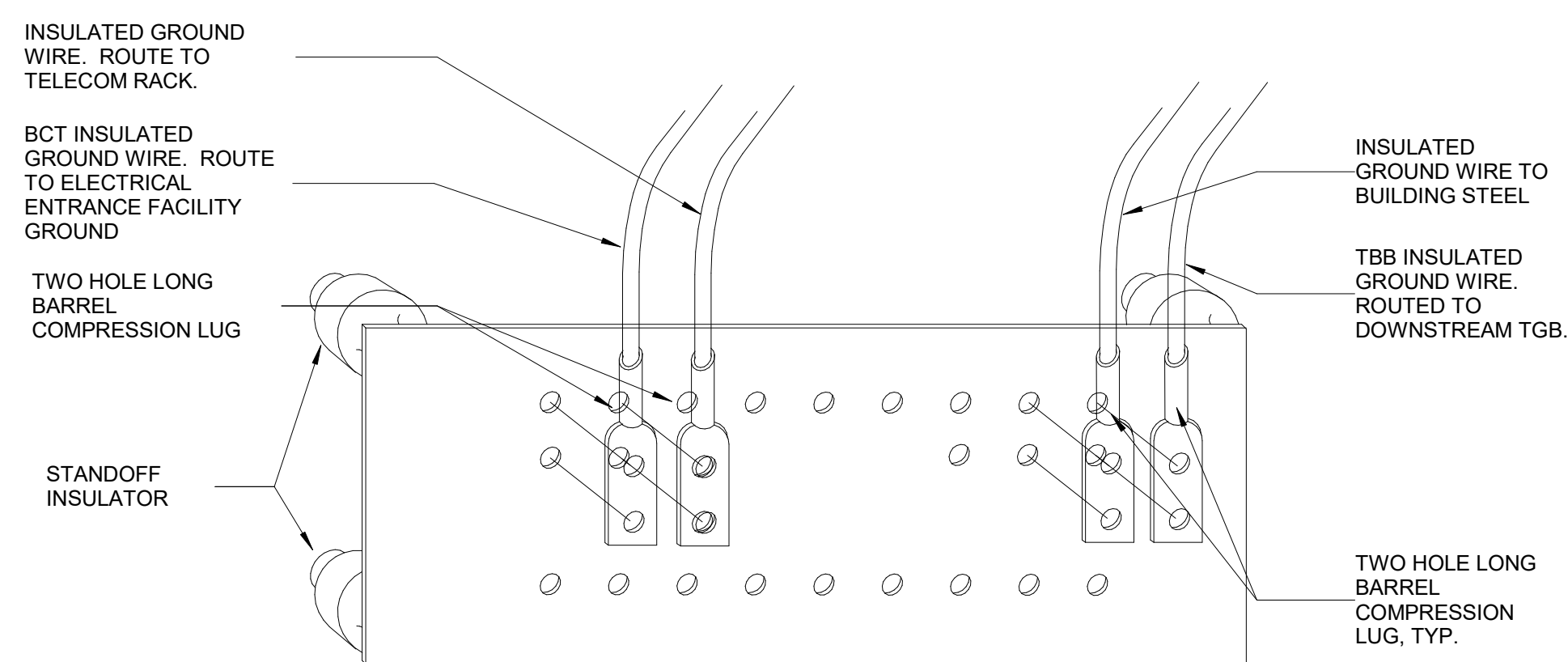
TELECOMMUNICATIONS ROUGH-IN
DETAIL
Scale: N.T.S.



TELECOM FACE PLATE DETAIL
Scale: N.T.S.

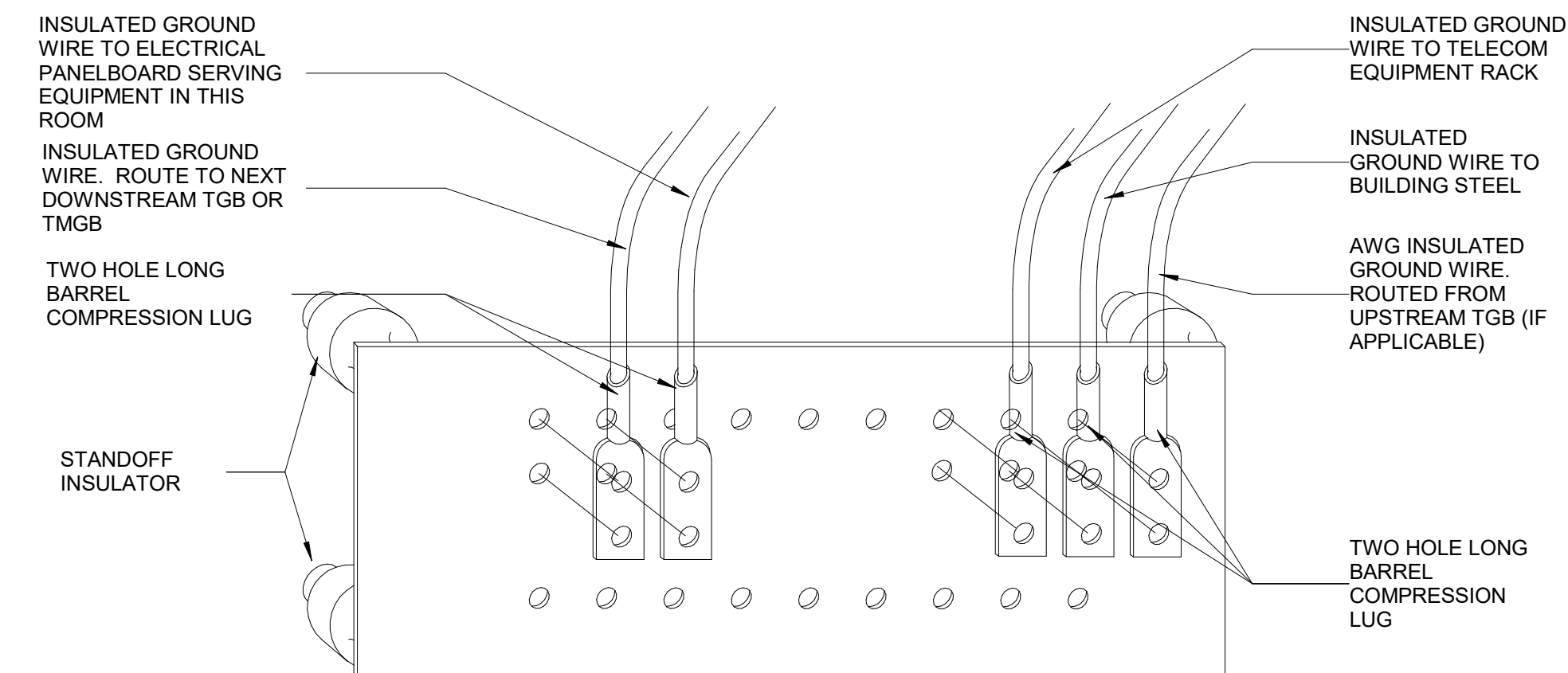


TELECOM/CATV FACE PLATE
DETAIL
Scale: N.T.S.



TELECOM MAIN GROUNDING BUSBAR (TMGB)

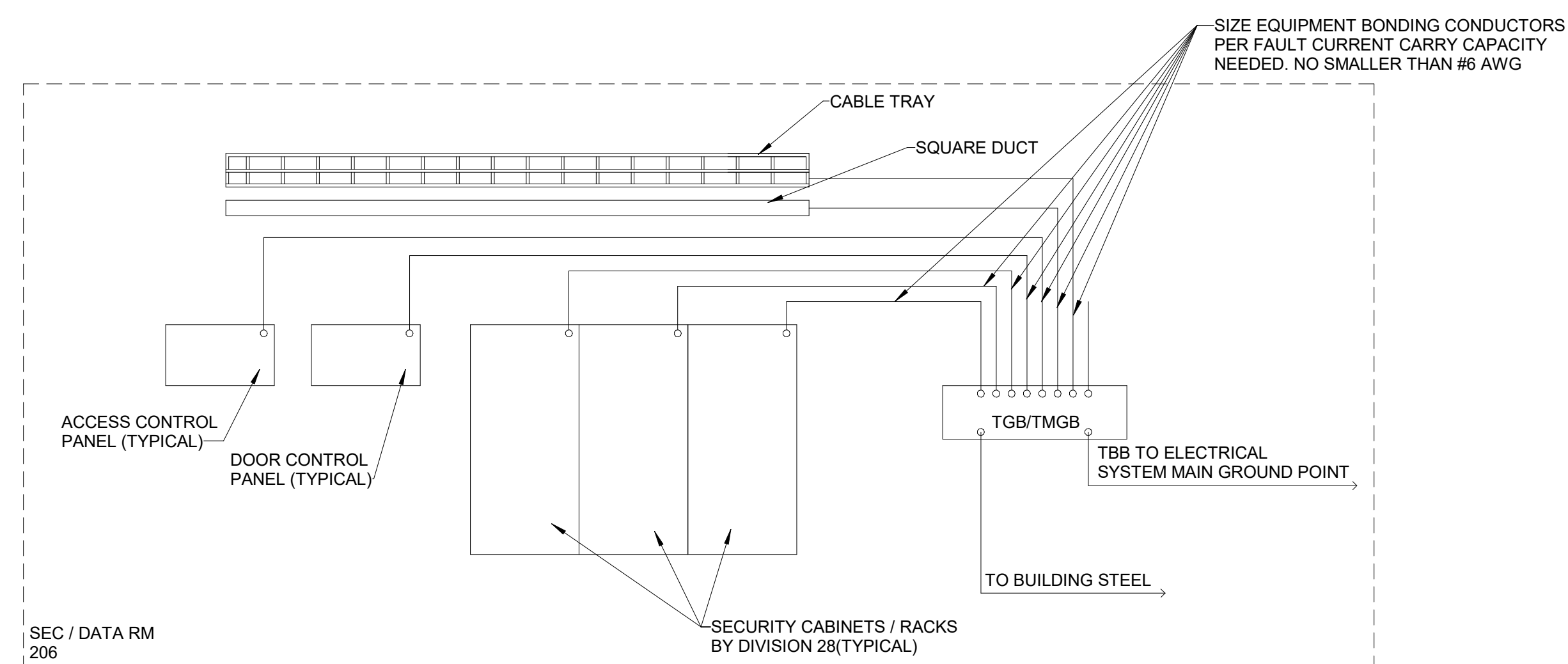
Scale: NTS



TELECOM GROUNDING BUSBAR
(TGB)
Scale: NTS

<p>BASED ON ANSI-J-STD-607B</p> <p>SIZE CONDUCTOR BASED</p> <p>ON LENGTH PER THE FOLLOWING</p>
<p>LESS THAN 13'-#6 AWG</p>
<p>14'-20' - #4 AWG</p>
<p>21'-26' - #3 AWG</p>
<p>27'-33' - #2 AWG</p>
<p>34'-41' - #1 AWG</p>
<p>42'-52' - 1/0 AWG</p>
<p>53'-66' - 2/0 AWG</p>
<p>67'-84' - 3/0 AWG</p>
<p>85'-105' - 4/0 AWG</p>
<p>106'-125' - 250 MCM</p>
<p>126'-150' - 300 MCM</p>
<p>151'-175' - 350 MCM</p>
<p>176' - 250' - 500 MCM</p>
<p>251'-300' - 600 MCM</p>
<p>GREATER THAN 301' - 750 MCM</p>

TBB GROUND CONDUCTOR SIZING CHART



GROUNDING DETAIL

[illegible]

REVISIONS

DRAWN BY	LTC
APPROVED BY	JMP
CHECKED BY	CAC
DATE	JULY 24, 2020

TITLE

DETAILS -
SECURITY/TELECOM

PROJECT NO.	50101397
-------------	----------

TY-303

SHEET NO.

DESTROY AFTER USE

