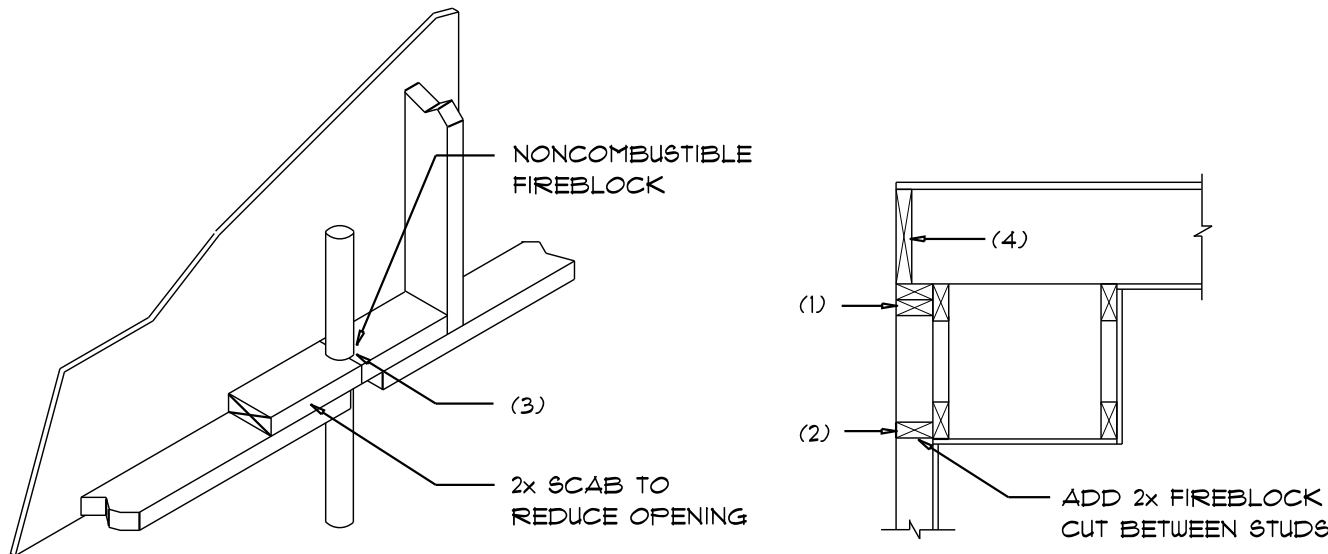


STANDARD HEADER SCHEDULE

0'-0" UP TO 6'-0" OPENINGS
DOUBLE 2x8 No.#2 SOUTHERN PINE WITH 1/2" OSB SOLID CONTINUOUS SPACER GLUED AND NAILED WITH 10d x 0.128" x 3" NAILS IN 2 ROWS @ 12" O.C. STAGGERED EACH SIDE WITH 1 - HEADER STUD AND 1 FULL HEIGHT STUDS EACH SIDE OF OPENING

6'-0" UP TO 9'-0" OPENINGS
DOUBLE 2x12 No.#2 SOUTHERN PINE WITH 1/2" OSB SOLID CONTINUOUS SPACER GLUED AND NAILED WITH 10d x 0.128" x 3" NAILS IN 2 ROWS @ 12" O.C. STAGGERED EACH SIDE WITH 1 - HEADER STUD AND 2 FULL HEIGHT STUDS EACH SIDE OF OPENING

9'-0" UP TO 16'-0" OPENINGS
DOUBLE 2x12 No.#2 SOUTHERN PINE WITH 1/2" OSB SOLID CONTINUOUS SPACER GLUED AND NAILED WITH 10d x 0.128" x 3" NAILS IN 2 ROWS @ 12" O.C. STAGGERED EACH SIDE WITH 2 - HEADER STUDS 3 FULL HEIGHT STUDS EACH SIDE OF OPENING



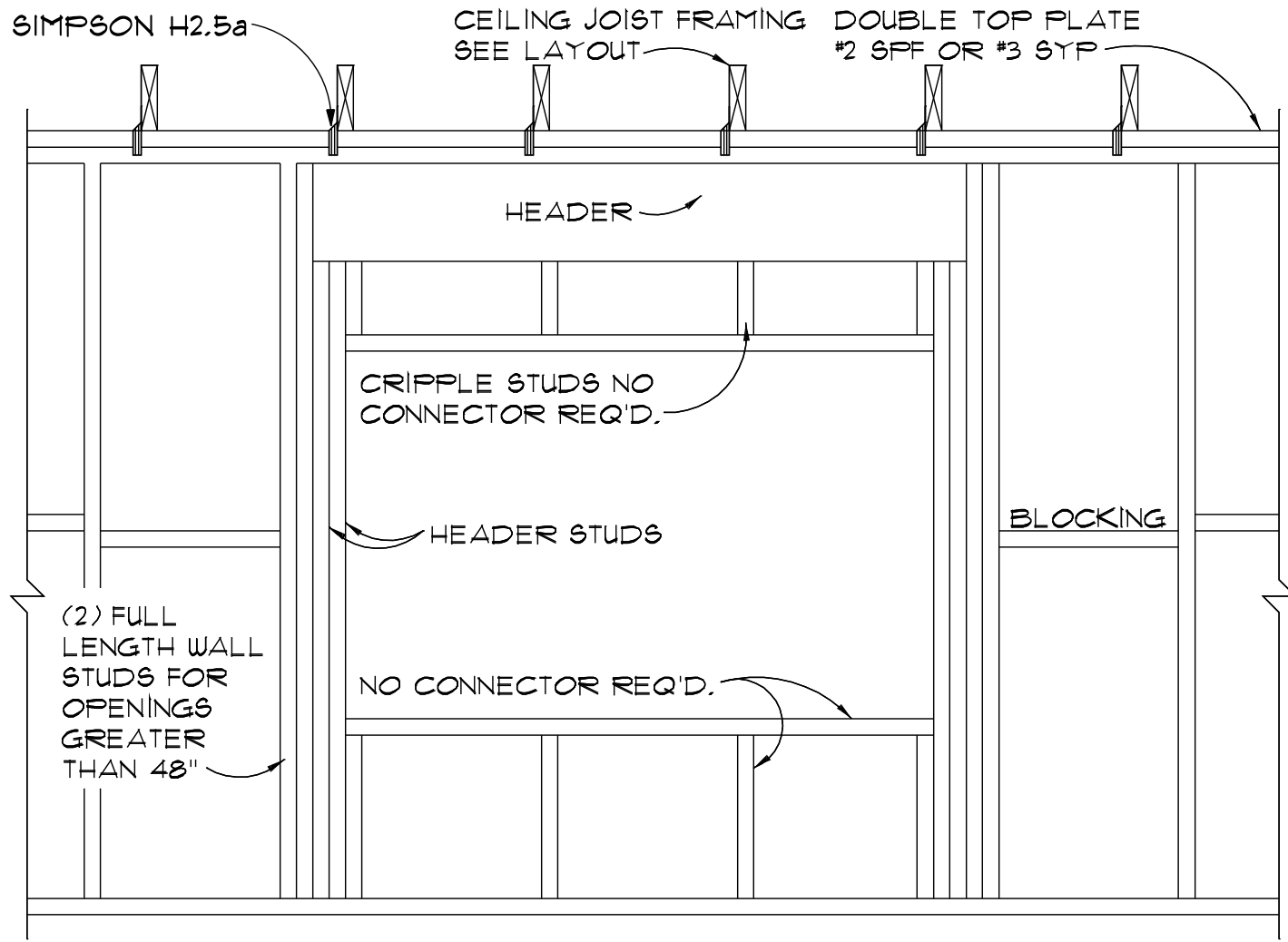
PENETRATIONS SOFFIT/DROPPED CLG.

FIREBLOCKING NOTES:

- FIREBLOCKING SHALL BE INSTALLED IN WOOD FRAME CONSTRUCTION IN THE FOLLOWING LOCATIONS:
- IN CONCEALED SPACES OF STUD WALLS AND PARTITIONS INCLUDING FURRED SPACES AT CEILING AND FLOOR LEVELS.
 - AT ALL INTERCONNECTIONS BETWEEN CONCEALED VERTICAL AND HORIZONTAL SPACES SUCH AS OCCUR AT SOFFITS, DROP CEILINGS, COVE CEILINGS, ETC.
 - AT OPENINGS AROUND VENTS, PIPES, DUCTS, CHIMNEYS AND FIREPLACES AT CEILING AND FLOOR LEVELS WITH "PYROPANEL MULTIFLEX SEALANT"
 - AT ALL INTERCONNECTIONS BETWEEN CONCEALED VERTICAL STUD WALL OR PARTITION SPACES AND CONCEALED SPACES CREATED BY AN ASSEMBLY OF FLOOR JOISTS, FIREBLOCKING SHALL BE PROVIDED FOR THE FULL DEPTH OF THE JOISTS AT THE ENDS AND OVER THE SUPPORTS.

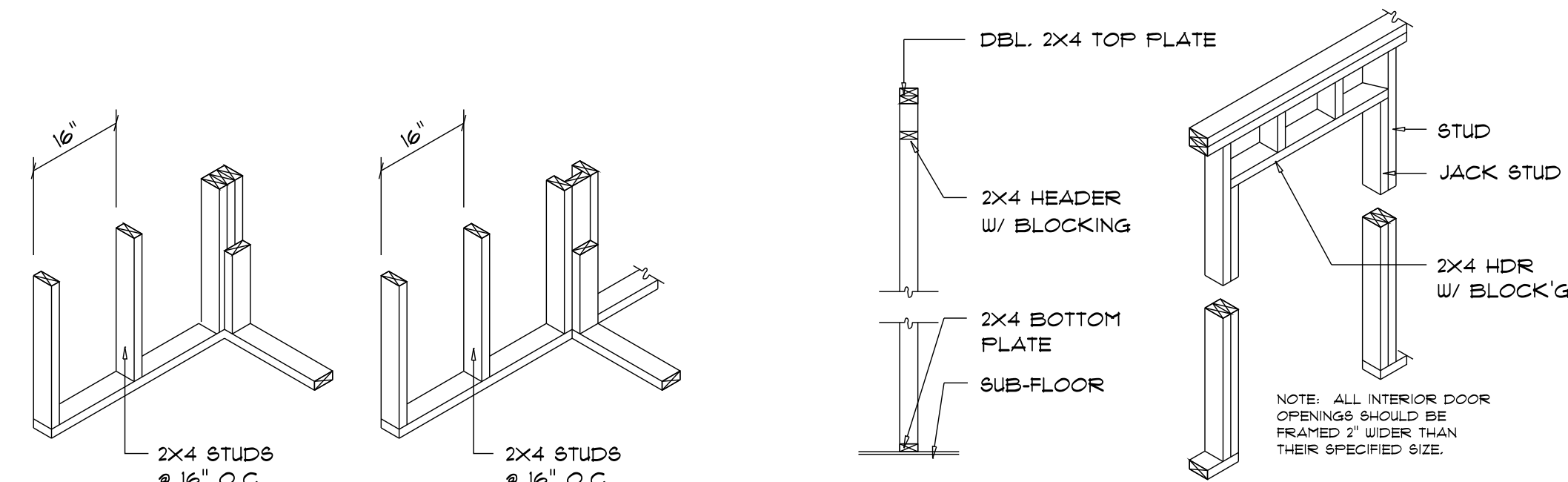
Fire Stopping DETAILS

SCALE: NONE

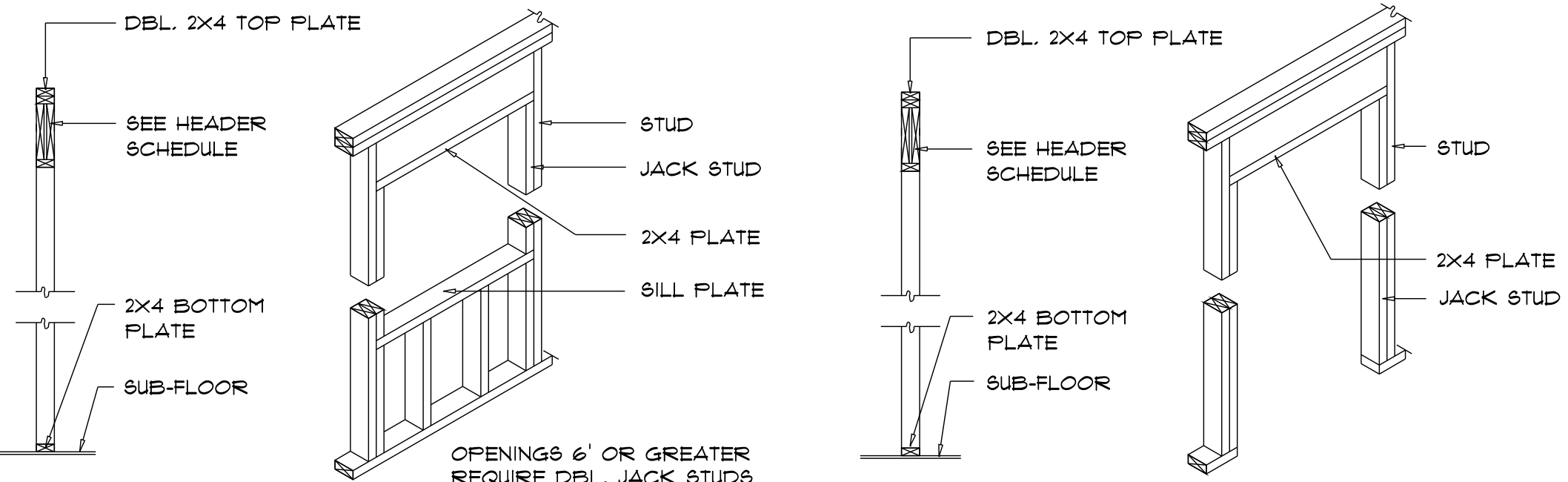


BEARING WALL FRAMING

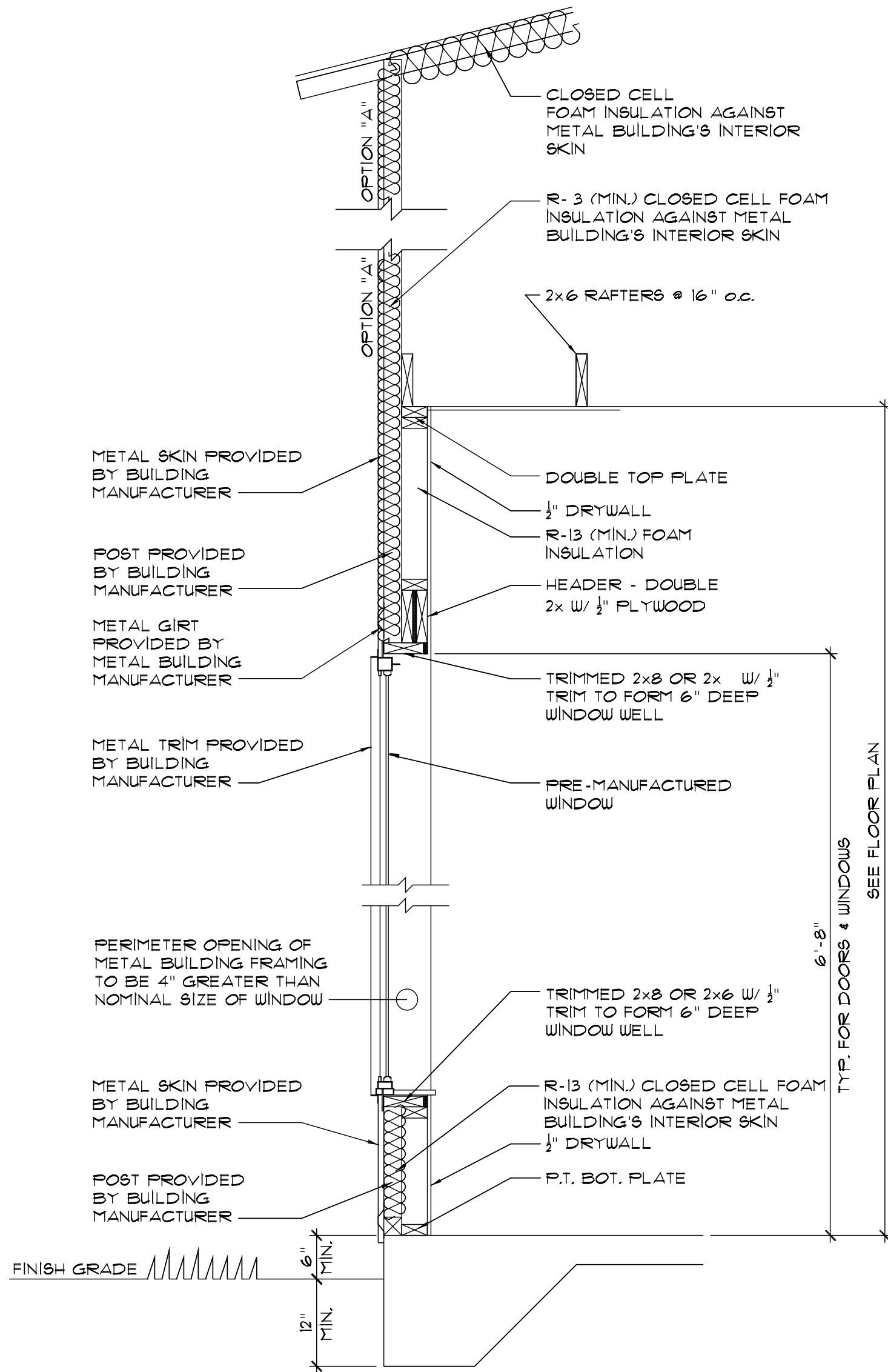
SCALE: 3/4" = 1'-0"



WALL CORNER WALL INTERSECTION NON-BEARING WALL HEADER

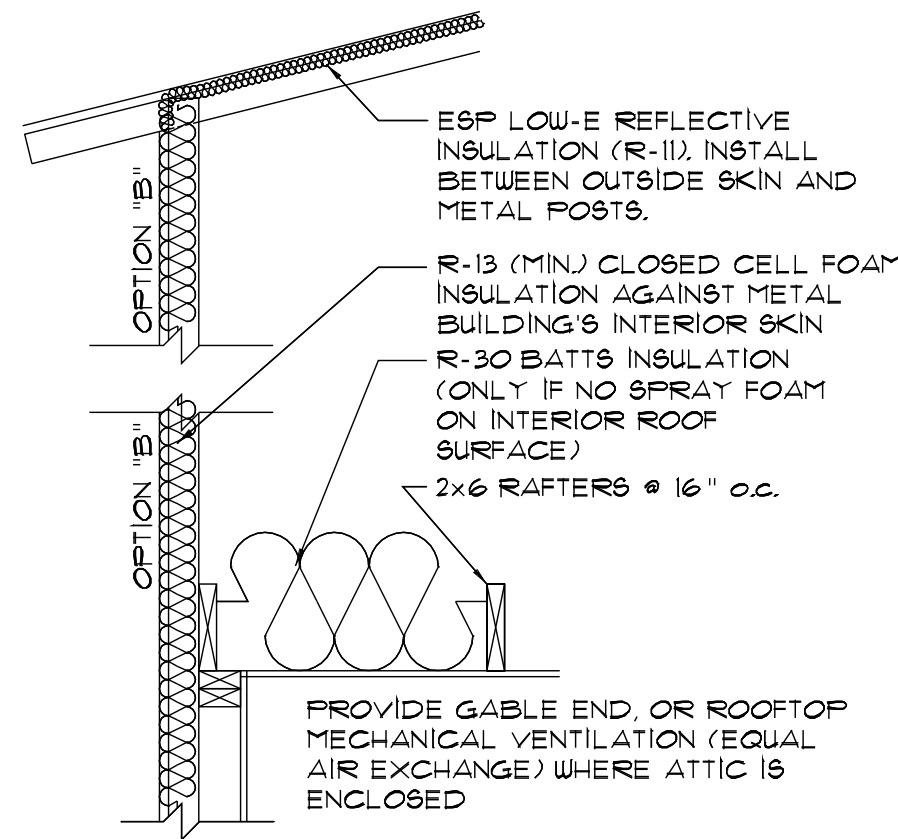


TYPICAL WINDOW HEADER BEARING WALL HEADER



TYPICAL WALL SECTION

SCALE: 3/4" = 1'-0"



OPTIONAL CLG. INSUL.

THIS DOCUMENT HAS BEEN DIGITALLY SIGNED AND SEALED. PRINTED COPIES OF THIS DOCUMENT ARE NOT CONSIDERED SIGNED AND SEALED. THE SIGNATURE MUST BE VERIFIED ON ANY ELECTRONIC COPIES OF THIS DOCUMENT

REVISIONS SCHEDULE			
PROPOSAL	July 16th, 2024		
REVISIONS	Jan. 31st, 2025		
REVISIONS	Feb. 5th, 2025		

A BARNDOMINIUM FOR:
PASCHALL RESIDENCE
COLUMBIA COUNTY, FLORIDA

RIDGEPOINT DESIGN
566 SW ARLINGTON BLVD. STE 101 LAKE CITY, FL 32825
P: 386-288-1188 E: RIDGEPOINTDESIGN@GMAIL.COM

NICHOLAS PAUL GEISLER ARCHITECT
N.C.A.R.B. Certified

Nicholas as Geisler
Digitally signed by Nicholas Geisler
Date: 2025.06.17 15:43:43 -0400
AR0007005

SHEET NUMBER
A.6
OF 7 SHEETS