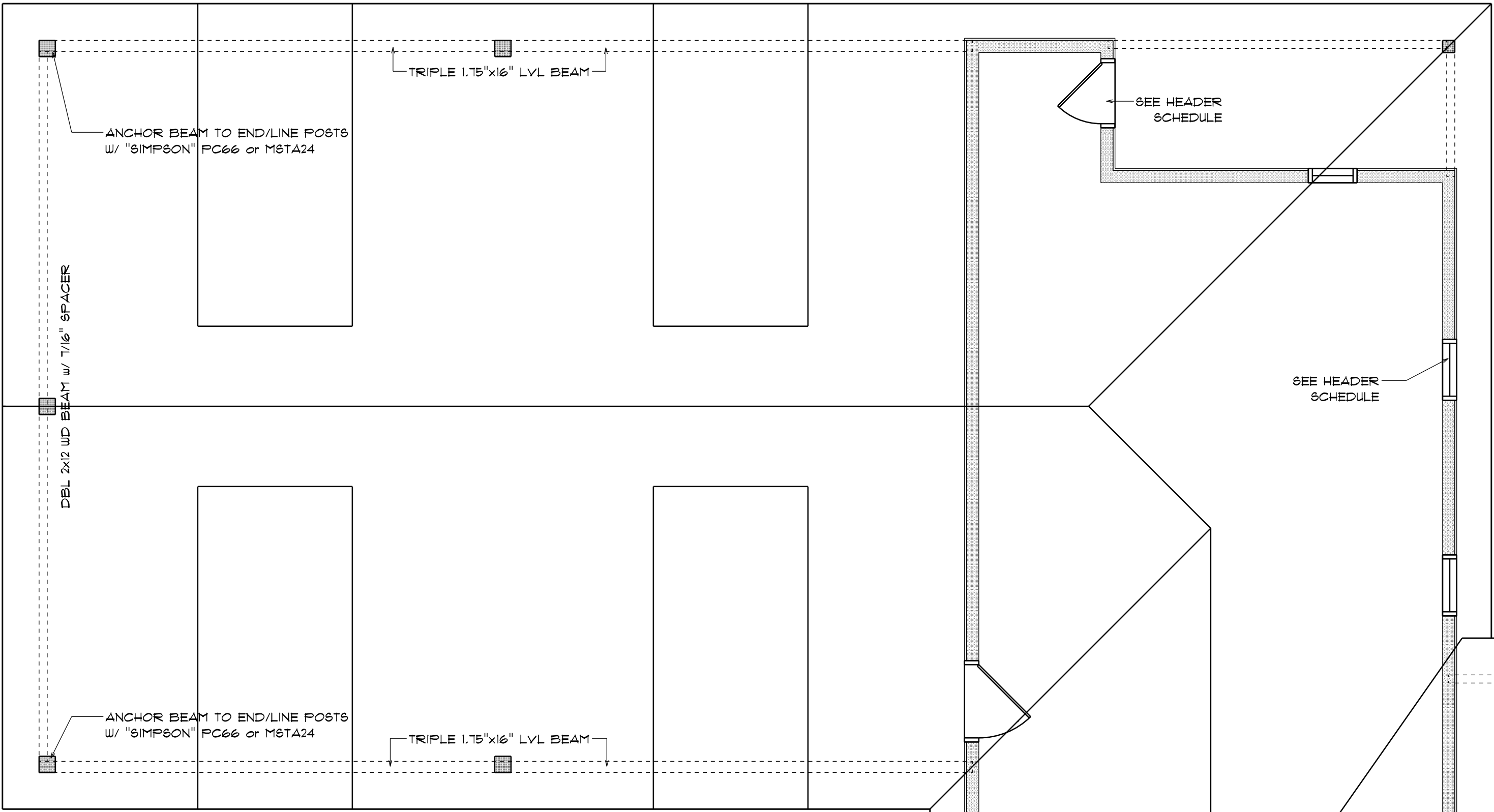


NOTE!
SHEATH ROOF W/ 1/2" CDX PLYWOOD PLACED
W/ LONG DIMENSION PERPENDICULAR TO THE
ROOF TRUSSES. SECURE TO FRAMING W/ 8d
NAILS - AS PER DETAIL ON SHEET SD.4

NOTE!
THE DESIGN WIND SPEED FOR THIS
PROJECT IS 130 MPH PER FBC 1609
AND LOCAL JURISDICTION REQUIREMENTS

NOTE!
ANCHOR GIRDER TRUSS(ES) TO HEADER
WITH 2 "SIMPSON" LGT(2, 3 OR 4),
ANCHOR HEADER TO KING STUDS W/
2 "SIMPSON" ST2 EA. END - TYP., T.O.

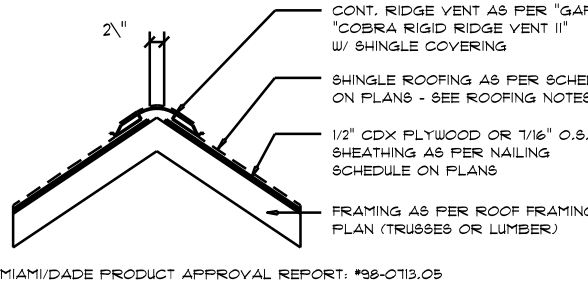
NOTE!
ALL PENETRATIONS OF THE TOP PLATE OF ALL LOAD BEARING
WALLS SHALL BE SEALED WITH FIRE RETARDANT CAULKING,
INCLUDING WIRING, PLUMBING OR OTHER SUCH PENETRATIONS.
WALLS OVER 8'-0" TALL SHALL HAVE CONTINUOUS BLOCKING
TO LIMIT CAVITY HEIGHT TO 8'-0". PENETRATIONS THROUGH
SUCH BLOCKING SHALL BE TREATED IN THE SAME MANNER
AS TOP PLATES, NOTED ABOVE



WOOD STRUCTURAL NOTES

- TEMPORARY BRACING OF THE STRUCTURE DURING ERECTION, REQUIRED FOR SAFE AND STABLE CONSTRUCTION, SHALL BE THE SOLE RESPONSIBILITY OF THE CONTRACTOR SO ENGAGED. TEMPORARY & PERMANENT BRACING OF ROOF TRUSSES SHALL BE AS PER THE STANDARD GUIDELINES OF THE "TRUSS PLATE INSTITUTE".
- ALL TRUSSES SHALL BE DESIGNED BY A LICENSED PROFESSIONAL ENGINEER & SHALL BE SIGNED AND SEALED BY SAME. TRUSS DESIGN SHALL INCLUDE PLACEMENT PLANS, TRUSS DETAILS, TRUSS TO TRUSS CONNECTIONS & THE STANDARD SPECIFICATIONS & RECOMMENDATIONS OF INSTALLATION OF THE "TRUSS PLATE INSTITUTE".
- WOOD STUDS IN EXTERIOR WALLS & INTERIOR BEARING WALLS SHALL BE NOT LESS THAN N/2 HEM-FIR OR BETTER.
- CONNECTORS FOR WOOD FRAMING SHALL BE GALVANIZED METAL OR BLACK METAL AS MANUFACTURED OR AS CALLED FOR IN THE PLANS AND BE OF A DESIGN SUITABLE FOR THE LOADS AND USE INTENDED. REFER TO THE JOINT REINFORCEMENT SCHEDULE FOR PRINCIPLE CONNECTIONS.

AREA OF ATTIC	REG'D L.P. OF VENT	NET FREE AREA OF INTAKE
1600 SF	22 LF	410 SQ.IN.
2000 SF	24 LF	450 SQ.IN.
2200 SF	26 LF	510 SQ.IN.
2600 SF	32 LF	680 SQ.IN.
3600 SF	36 LF	750 SQ.IN.
3800 SF	40 LF	850 SQ.IN.
3600 SF	44 LF	950 SQ.IN.

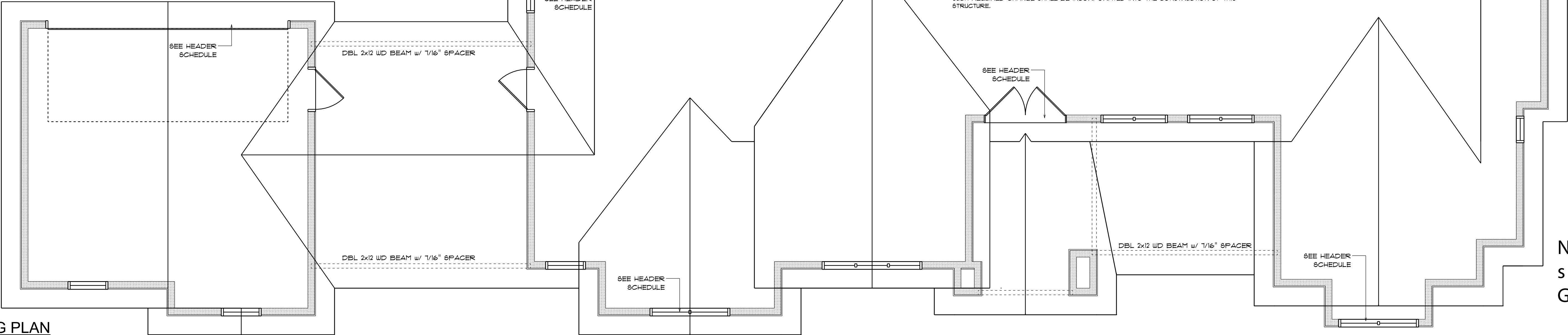


Ridge Vent DETAIL

SCALE: 1/2" = 1'-0"

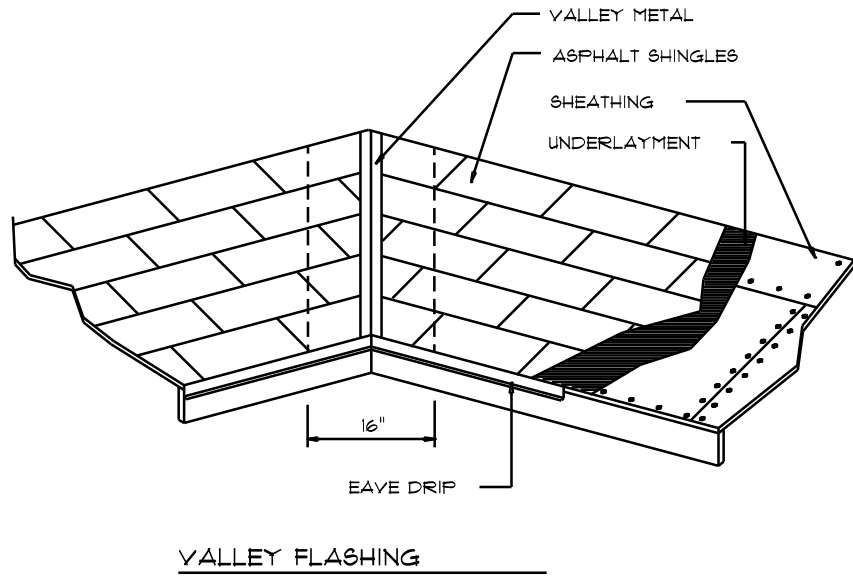
ROOF PLAN NOTES

- R-1 SEE ELEVATIONS FOR ROOF PITCH
R-2 ALL OVERHANGS 8" (1" on gables) UNLESS OTHERWISE NOTED
R-3 PROVIDE ATTIC VENTILATION IN ACCORDANCE WITH SCHEDULE ON SD.3
R-4 SEE EXTERIOR ELEVATIONS AND FLOOR PLANS TO VERIFY PLATE AND HEEL HEIGHTS
R-5 MOVE ALL VENTS AND OTHER ROOF PENETRATIONS TO REAR



ROOF FRAMING PLAN

SCALE: 1/4" = 1'-0"



ROOFING METALS for FLASHING/ROOFING			
MINIMUM THICKNESS REQUIREMENTS			
MATERIAL	MINIMUM THICKNESS (in)	GAGE	WEIGHT (LBS.)
COPPER			16
ALUMINUM	0.024		
STAINLESS STEEL		28	
GALVANIZED STEEL	0.0178	26 (ZINC COATED G90)	
ZINC ALLOY LEAD PAINTED TERNE	0.021		40

Roofing/Flashing DETS.

SCALE: NONE

A

STANDARD HEADER SCHEDULE

0'-0" UP TO 6'-0" OPENINGS

DOUBLE 2x8 No. 2 SOUTHERN PINE WITH 1/2" OSB SOLID CONTINUOUS SPACER GLUED AND NAILED WITH 10d x 0.09" x 3" NAILS IN 2 ROWS @ 12" O.C. STAGGERED EACH SIDE WITH 1 - SIMPSON MSTA4S TOP AND 1 - SIMPSON SPHAR BOTTOM EACH SIDE OF OPENING WITH 1 - HEADER STUD AND 1 FULL HEIGHT STUDS EACH SIDE OF OPENING

6'-0" UP TO 9'-0" OPENINGS

DOUBLE 2x12 No. 2 SOUTHERN PINE WITH 1/2" OSB SOLID CONTINUOUS SPACER GLUED AND NAILED WITH 10d x 0.09" x 3" NAILS IN 2 ROWS @ 12" O.C. STAGGERED EACH SIDE WITH 1 - SIMPSON MSTA4S TOP AND 2 - SIMPSON SPHAR BOTTOM EACH SIDE OF OPENING WITH 1 - HEADER STUD AND 2 FULL HEIGHT STUDS EACH SIDE OF OPENING

9'-0" UP TO 16'-0" OPENINGS

DOUBLE 2x12 No. 2 SOUTHERN PINE WITH 1/2" OSB SOLID CONTINUOUS SPACER GLUED AND NAILED WITH 10d x 0.09" x 3" NAILS IN 2 ROWS @ 12" O.C. STAGGERED EACH SIDE WITH 3 - SIMPSON MSTA4S EACH SIDE OF OPENING WITH 2 - HEADER STUDS AND 3 FULL HEIGHT STUDS EACH SIDE OF OPENING

16'-0" GARAGE DOOR OPENINGS

2 FLY 1N" x 11 1/8" 2.0E MICROLAM LVL HEADER GLUED AND NAILED WITH 10d x 0.09" x 3" NAILS IN 2 ROWS @ 12" O.C. STAGGERED EACH SIDE WITH 3 - SIMPSON MSTA4S EACH SIDE OF OPENING WITH 2 - HEADER STUDS AND 3 FULL HEIGHT STUDS EACH SIDE OF OPENING

GENERAL TRUSS NOTES:

- TRUSSES SHALL BE DESIGNED BY A LICENSED ENGINEER, AND IN ACCORDANCE WITH THE REQUIREMENTS OF THE "NATIONAL FOREST PRODUCTS ASSOCIATION" MANUAL FOR "STRESS RATED LUMBER AND ITS CONNECTIONS", LATEST ED., ALONG W/ THE "TRUSS PLATE INSTITUTE" SUGGESTED GUIDELINES FOR TEMPORARY AND PERMANENT BRACING, AND HANDLING OF TRUSSES. TRUSS SHOP DRAWINGS SHALL INCLUDE TRUSS DESIGN, PLACEMENT PLANS, DETS, & TRUSS TO TRUSS CONNECTIONS.
- TRUSS SHOP DRAWINGS SHALL BE SIGNED & SEALED BY THE DESIGNING ENGINEER.
- FOLLOWING DEVELOPMENT OF TRUSS SHOP DRAWINGS, ADJUSTMENTS TO THE ANCHOR REQUIREMENTS MAY BE REQUIRED DEPENDING ON THE ENGINEERED GRAVITY AND WIND UPLIFT REQUIREMENTS OF TRUSSES OR GIRDERS. THE CONTRACTOR SHALL MAKE AVAILABLE A COMPLETE SET OF TRUSS SHOP DRAWINGS TO THE ARCHITECT FOR THE PURPOSE OF REVIEW OF LOADS IMPOSED ON THE BALANCE OF THE STRUCTURE. ANY SUCH REQUIRED CHANGE SHALL BE INCORPORATED INTO THE CONSTRUCTION OF THIS STRUCTURE.

REVISIONS
April 16th, 2025

CUSTOM HOME FOR:
JONES RESIDENCE
COLUMBIA COUNTY, FLORIDA

NICHOLAS PAUL GEISLER ARCHITECT
1758 NW Brown Rd.
Lake City, FL 32055
N.C.A.R.B. Certified

SHEET NUMBER
S.2
OF 4 SHEETS

Nicholas Geisler
Digitally signed by Nicholas Geisler
Date: 2025.04.16 14:24:55 -04'00'
AR0007005