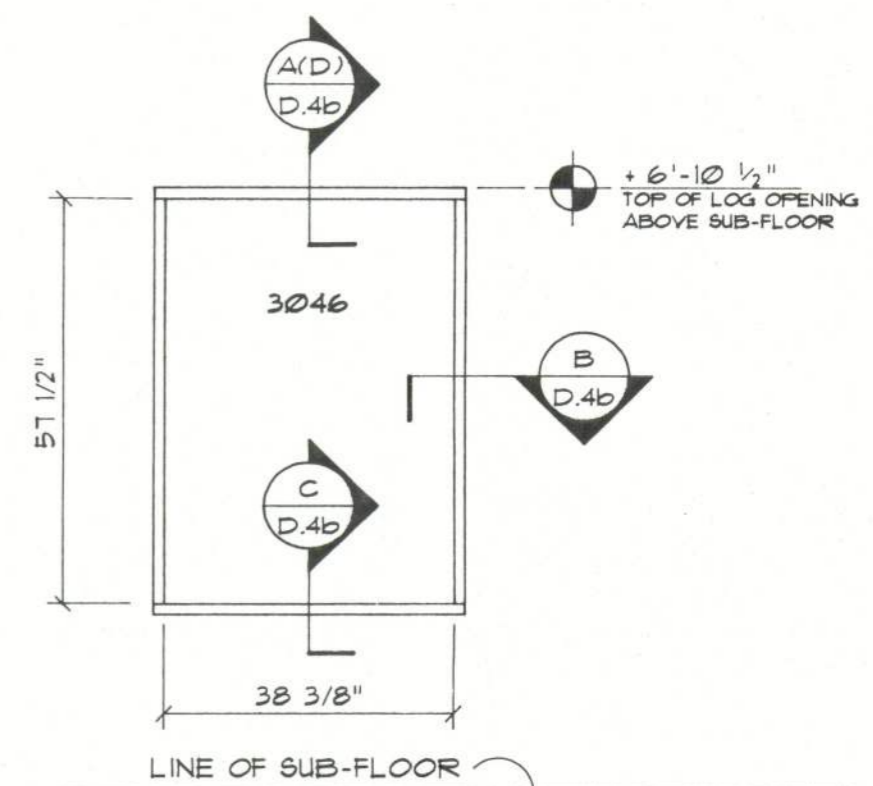


R.O. Sizes of Std. WOOD Windows

SCALE: 1/4" = 1'-0"

NOTE!
REFER TO C/D.4c FOR DOOR/WINDOW SUB-BUCK
DETAILS, TYPICAL ALL OPENINGS.



NOTE!
HEAD DETAILS INCLUDE A1, A2, D.1 & D.2
DBL. JAMB BUCK DETAIL SIMILAR TO "B"

Detail Key

SCALE: 1 1/2" = 1'-0"

NOTE!
WINDOW ROUGH OPENINGS AND THE DETAILS ON
D.4b INDICATE THE ALUMINUM CLAD STYLE WINDOW
STAIN GRADE WINDOW UNITS ARE INSTALLED WITH
THESE SAME SIZES AND DETAILS.

HEAD DETAILS D.1 AND D.2 ARE FOR 8" HIGH WALL
LOGS - DETAILS "B" & "C" APPLY.

Custom Log Home Standard Details: WINDOW OPENING DETAILS

NOTE: VARIANCE IN LOCAL CODES/ORDINANCES SHALL BE THE RESPONSIBILITY OF THE CUSTOMER. THE CUSTOMER IS RESPONSIBLE FOR APPROVAL BY A LICENSED ARCHITECT AND ENGINEER. ANY DISCREPANCIES IN THE PLANS SHALL BE BROUGHT TO THE ATTENTION OF THE ARCHITECT/ENGINEER BEFORE PROCEEDING WITH THE CONSTRUCTION OF THE HOME. THESE PLANS ARE THE PROPERTY OF SRRH.

**SUWANNEE RIVER
LOG HOMES, INC.**

Manufacturers
Specializing in Cypress & Cedar Custom Homes
4345 HIGHWAY 90, WELLSBORO, FLORIDA 32094
904.963.1065 / 1.800.362.1065

SHEET:

D.4a

REVISION:

DRAWN:

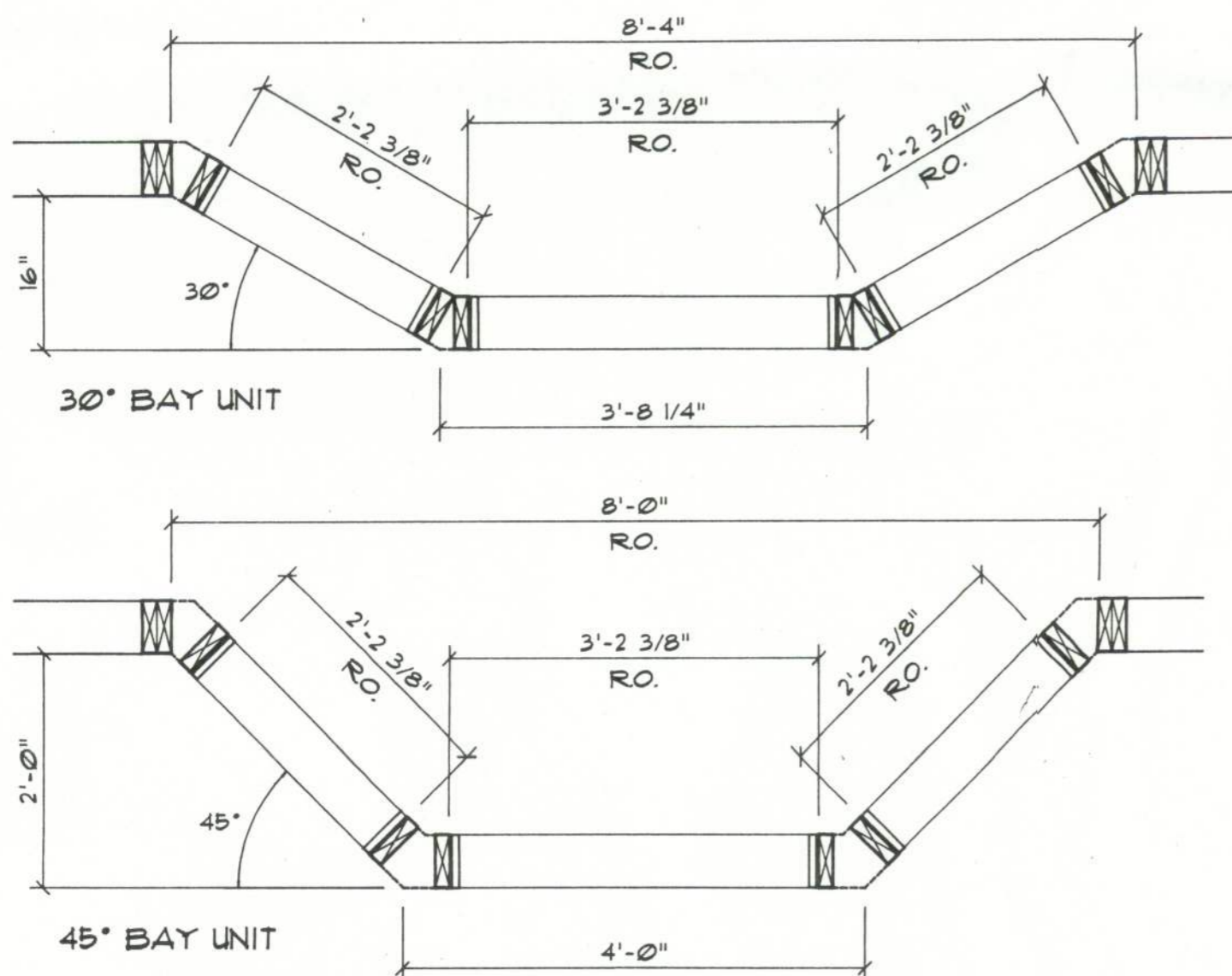
NPG

DATE:

01NOV96

COM:

SRLH



NOTE!
DIMENSIONS SHOWN ARE FOR 3-0 CENTER
UNIT AND 2-0 FLANKING UNITS.

Bay Window Dimension PLANS

SCALE: 3/4" = 1'-0"

WINDOW INSTALLATION GUIDELINES:

1. REFER TO THE DETAILS ON SHEET D.10 FOR ROUGH OPENING SUB-BUCK REQUIREMENTS AND SQUARING. ALL ROUGH OPENINGS SHALL BE SQUARE, PLUMB AND TRUE TO PLANE AND SIZE REQUIREMENTS.
2. ALL GAPS BETWEEN THE SUB-BUCKS (JAMBS, HEADS & SILLS) & THE WALL LOGS SHALL BE SEALED WITH CAULK AND/OR FOAM INSULATION. ANCHOR THE SUB-BUCKS TO THE LOG WALL WITH 2 - 3/8" x 8" LAG SCREWS AND 1" WASHERS INTO UPPER 2 LOG COURSES AND LOWER 2 LOG COURSES EA. SIDE OF THE WINDOW OPENING (8 LAGS TOTAL), WHERE DBL. BUCKS ARE REQUIRED, USE 3 LAG SCREWS AT TOP & BOTTOM OF THE JAMBS (12 LAGS TOTAL).
3. RECESS THE HEADS OF THE JAMB LAGS 3/8", MIN., TO BE FLUSH W/ THE FACE OF THE SUB-BUCK.
4. PLACE WINDOW UNIT IN ROUGH OPENING AND SHIM AS REQUIRED FOR A LEVEL PLACEMENT. CENTER THE UNIT IN THE ROUGH OPENING & WEDGE IT INTO PLACE USING TAPERED CEDAR SHIMS. FIX WINDOW IN OPENING USING 10d FINISHING NAILS, INSTALLED IN INCONSPICUOUS LOCATIONS.
NOTE:
POSITION METAL WINDOW UNIT IN THE CENTER OF THE R.O. & LEVEL
5. SECURE THE WINDOW UNIT IN PLACE W/ #12 x 2 1/2" WOOD SCREWS @ 12" O.C., AT EA. JAMB & ALONG THE HEAD - PLACE SCREWS WITHIN 4" OF EA. CORNER - INSTALLED IN INCONSPICUOUS LOCATIONS.
NOTE:
SECURE METAL WINDOWS TO THE SUB-BUCK WITH 10d GALV. SPIRAL NAILS AT 8" O.C., ALL AROUND, & WITHIN 4" OF CORNERS
6. INSTALL THE EXTERIOR TRIM BY NAILING TO THE SUB-BUCK, USING THE 12d SPIRAL GALV. SIDING NAILS. FILL ALL GAPS BETWEEN THE TRIM AND THE WALL LOGS AT THE JAMBS WITH FOAM INSULATION.
7. INSTALL METAL FLASHING OVER THE HEADS OF ALL WINDOWS (& DOORS) EXPOSED TO THE WEATHER, PARTICULARLY ON GABLE END WALLS. CUT A SAW KERF INTO THE WALL LOGS, 1" DEEP. PRESS IN THE METAL FLASHING AND CAULK IN PLACE.
8. INSTALL THE INTERIOR TRIM BY NAILING TO THE SUB-BUCK, USING THE 10d FINISH NAILS. SET NAIL HEADS AND FILL HOLES W/ COLOR MATCHED WOOD FILLER, OR AS DIRECTED BY THE OWNER.