

FIBERGLASS SHINGLES OVER 15 LB. FELT  
(ON 25 YR. ARCH SHINGLES) OVER 1/2" OSB  
NOTE: ALL SHINGLES ARE FUNGUS RESISTANT

HURRICANE STRAP EMBEDDED  
IN CONC. LINTEL

HURRICANE TIES @ EACH END OF  
TRUSS. SEE TRUSS SCHEDULE  
FOR MANUFACTURER & MODEL NUMBER.  
ACTUAL TRUSS UPLIFT TO BE IDENTIFIED  
BY TRUSS MANUFACTURER

ALUMINUM EAVE DRIP

ALUMINUM FASCIA OVER  
2x6 FASCIA BOARD

CONT. PERFORATED  
ALUMINUM SOFFIT  
WITH EDGE TRIM

SEALANT

VARIABLE SEE ELEV.  
SILL HEIGHT

PRE-DYED ACROCRETE  
OVER STUCCO

FIN. GRADE (VARIES)  
SLOPE AWAY FROM BLDG.

#5 VERTICAL REINFORCEMENT  
TIED TO TIEBEAM FROM FOOTING.  
PLACE 1 EACH SIDE OF OPENINGS  
& (1) AT EACH CORNER. FOR REST  
OF WALLS, SEE WIND LOAD CALCS.  
NOTES.

ENGINEERED ROOF TRUSS  
@ 24" O.C. W/ METAL SEATS

8'-0" A.F.F.  
TRUSS BEARING

R-30 FIBERGLASS INSULATION

1/2" IMPERIAL BOARD

6'-8" A.F.F.  
WINDOW HEAD HT

CONTINUOUS FIRE BLOCKING/NAILER

8" TIE BEAM W/ (1) #5'S CONT. W/2'-0" BEND

8"x8" PRE-CAST  
LINTEL

DEAD WOOD ALL 4 SIDES  
& WINDOW HEAD, TYP.

WINDOW, SEE SCHEDULE  
FOR SIZE & TYPE

CULTURED MARBLE SILL

PRECAST CONC. SILL WITH DRIP

8" CMU WALL

1/2" IMPERIAL BOARD ON  
3/4" P.T. OVER 3/4" R-MAX  
INS. BOARD

P.T. 1x4 CONTINUOUS NAILER

3" WOOD BASE

4" FREE FLOATING SLAB WITH 1/2"  
EXPANSION JOINT AROUND PERIMETER  
W/FIBER REINFORCED CONCRETE OVER  
6 MIL VAPOR BARRIER

0'-0" A.F.F.

FINISHED FLOOR

20" WIDE X 10" HIGH CONT.  
FOOTING W/ (3) #5'S CONT.  
REINFORCEMENT, TYP.

VARIABLE (12" BELOW GRADE MIN.)  
BOTTOM OF SLAB

95% MECH. COMPACTED,  
TERMITE TREATED EARTH FILL

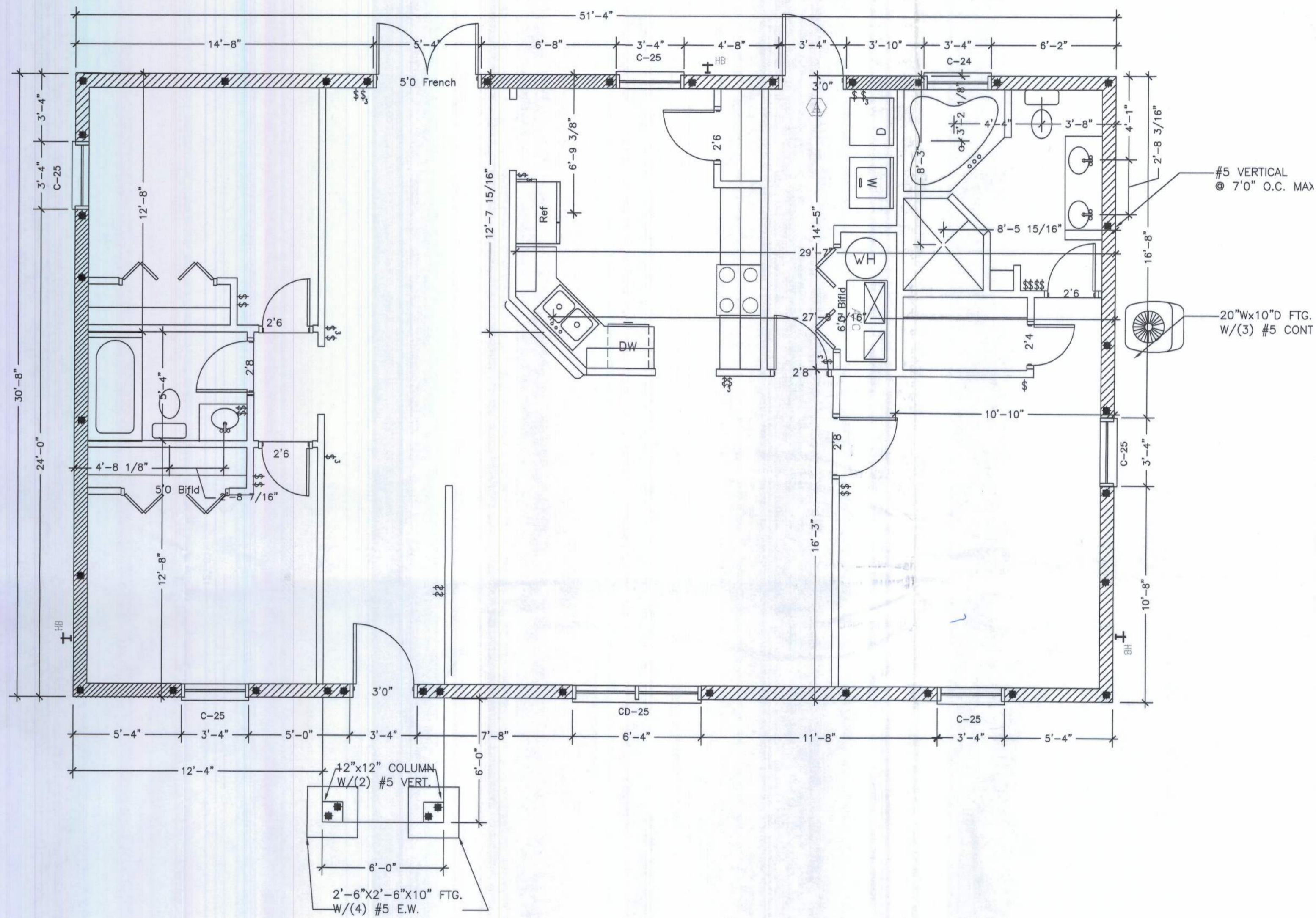
UNDISTURBED SOIL

## TYPICAL WALL SECTION

SCALE: 3/4"=1'-0"

ROUGH MASONRY/FRAME OPENING SCHEDULE	
COMMODITY SIZES	ROUGH OPENING (WxH)
UNIT CALL SIZE	1/2" FLANGE MASONRY (2BY)
C-1/2 32	28-3/4x26-7/8
C-32	55-3/8x26-7/8
C- 1/2 33	28-3/4x39-1/8
C-23	39-1/4x39-1/8
C-33	55-3/8x39-1/8
C-1/2 34	28-3/4x51-1/2
C-24	39-1/4x51-1/2
C-34	55-3/8x51-1/2
C-15	21-3/8x63-7/8
C-1/2 35	28-3/4x63-7/8
C-25	39-1/4x63-7/8
C-35	55-3/8x63-7/8
C-16	21-3/8x77-5/8
CD-24	76-1/4x51-1/2
CD-34	108-1/2x39-1/8
CD-25	76-1/4x63-7/8
CD-35	108-1/2x63-7/8
ARCH	48-1/4x37-1/2

LINTEL SCHEDULE					
MASONRY OPENING	LINTEL MARK	LINTEL WIDTH	LINTEL HEIGHT	TOP BARS	BOTTOM BARS
up to 4'6"	A	7 5/8"	16"	nc	(2) #3
up to 9'	B	7 5/8"	16"	(2) (2) #2	(2) #4
9' Front Window	*B	7 5/8"	16"	(2) (2) #4	(2) #6
16' Garage Door	*B	7 5/8"	16"	(2) (2) #4	(2) #6



## FOUNDATION PLAN

SCALE: 1/4"=1'-0"

### SHEAR WALLS QUANTITY

TRANSVERSAL SHEARWALLS = 00'-0"  
LONGITUDINAL SHEARWALLS = 00'-0"

### MECHANICAL EQUIPMENT SCHEDULE

EQUIPMENT:	TYPE:	SIZE/RATING:
AIR COND.	ELEC	42 CAP./12 SEER
HEATING	ELEC	42 CAP./7.65 SEER
WATER HEATER	ELEC	40 GAL./0.97 EFF.



HOUSE CRAFT HOMES, L.L.C.  
12523 NW U.S. Hwy. 41 - Alachua, FL 32615  
Phone: (386) 462-5333/FAX: (386) 462-1509

Job name: BROWN	
Model: CUSTOM	Type: FOUNDATION
Location:	Drawn By: J.D.H.
Checked By: J.D.H.	Revision Date:
Scale: 1/4"=1'	Date: 3/15/11 Sheet: 2 of 4



HOMES BY HOUSE CRT, L.L.C.

12523 U.S. Highway 441 - Alachua, FL 32615 Phone: (904) 462-3/FAX: (904) 462-1509

Client Name: BROWN Model: Custom

BANK: First Federal LOAN TYF( ) Cash  
( ) Conventional  
(x) F.H.A.  
( ) V.A.

#### CABINET COLOR SELECTIONS:

Kitchen: Toilets Color  
Countertop 7732-46 buttermilk granite ETCHINGS FINISH Master white  
Cabinet Base Florence cordovan chocolate Hall white  
Master Bath: Other  
Countertop same as kitchen NOTES: ONE PIECE SHW TUB  
Cabinet Base same as kitchen White for hall b  
Hall Bath:  
Countertop same as above  
Cabinet Base same as above

#### BATHROOM TILE SELECTION:

Master Bath: Color Tub oices le Pump  
Shower 9x12 durado FD03 Master White COR NO  
Shower Floor 2x2 durado FD03 Hall White ac NO  
Grout #156 Fawn  
Hall Bath:  
Tub Surround Same as Master shower Bath 3 Tub Surround \*  
Tile Selection acrylic unit white Tile Selection  
Grout Tile Selection

#### VAULTS:

AS PER PLAN

#### CARPET

Homeowner still has to choose

#### VINYL/FLOORLE

18x18 durado FD03  
LAUNDRY FOYER, KITC, Dining Hall  
#156 Fawn  
hall and master bal 2x12 durado FD03

#### PAINT SELECTIONS:

Interior Wall Color homeowner to give painter color  
Interior Trim

#### Window Sills:

( ) Wc  
( ) Flat Marble  
( ) H plank Siding Wood Sill

#### RANGE SELECTIONS:

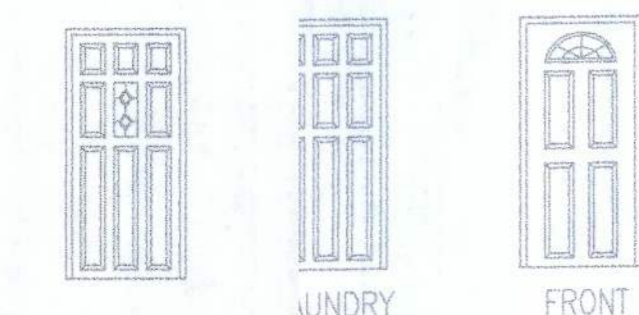
Range/Color black  
Hood/Color black

#### OPTIONAL APPLIANCES:

DW Block

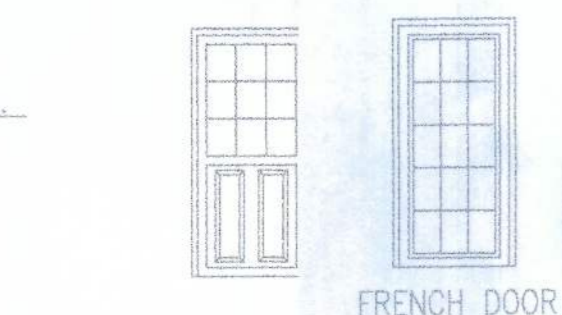
#### EXTERIOR FEATURE SELECTIONS:

Acrocrete/Main House 36233 38 Manchester  
Trim Package COLUMNS  
Trim Color White like models  
Exterior Door Colors WHITE  
Siding STO  
Soffit White  
Shingles match Oyster shell pinnacle shingles  
Style/Color ARCH  
Window Color WHITE  
Trim Type Colonial w/Classique Doors Std.  
Colonial Grills Front Windows Standard



#### BATH WINDOWS:

Master (x) Obscure ( ) Clear Glass  
Hall ( ) Obscure ( ) Clear Glass



SUPER Energy Pac: Yes ( ) No (x)

Well Allowance es (x) No ( )  
Septic Allowance es (x) No ( )

Extras:

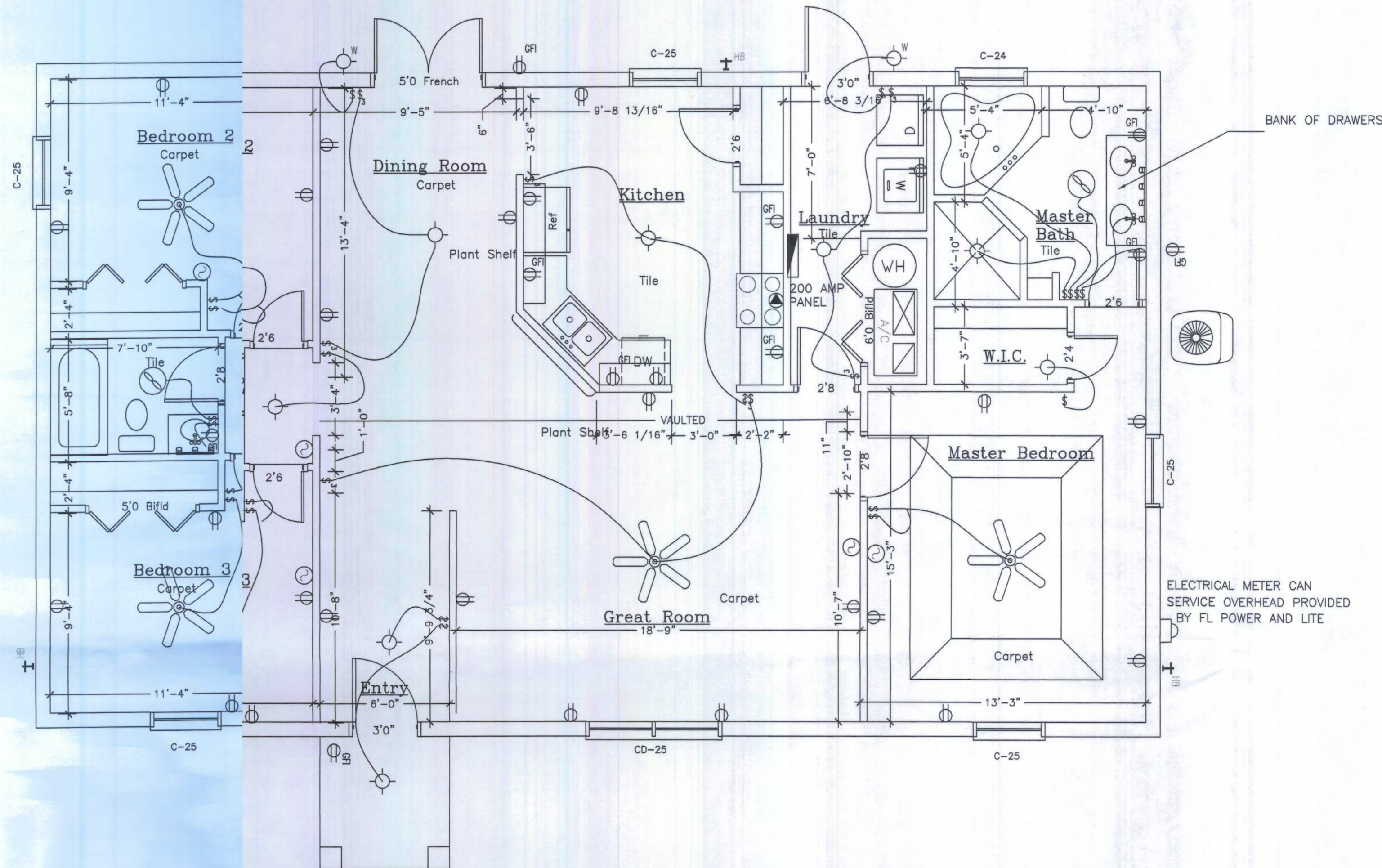
Power Company: Clay (x) Overh ( ) Underground

Fireplace Screenroom Co

We have reviewed this plan and all notes on it. All items we have disc'd with House Craft and its representatives are indicated on this "Master Copy". We understand that additional items that are not on this print can be done for a \$250.00 plan change fee plus cost of the change.

Purchaser: \* Date: \*

REV.	DESCRIPTION	DATE



## FLOOR PLAN

SCALE: 1/4"=1'-0"

AS per 2008 NEC CODES  
APP.

#### LIGHTING FIXTURE SCHEDULE

FIXTURE	DESCRIPTION
	SURFACE MOUNTED INCANDESCENT FIXTURE
	PRE-WIRED CEILING FAN
	DOUBLE FLOOD LIGHT FIXTURE
	FAN LIGHT VENTED TO EXTERIOR
	SURFACE MOUNTED INCANDESCENT FIXTURE

#### TYPICAL SPECIAL CIRCUIT ELECTRIC SCHEDULE

TWO GFI's CIRCUITS IN KITCHEN  
ONE OR TWO GFI's IN BATHS LOOPED TOGETHER  
GFI IN GARAGE, FRONT ENTRY, AND REAR PORCH LOOPED TOGETHER  
ONE GFI FOR JETTED TUB (OPTIONAL)  
TWO AFI CIRCUITS PROVIDED FOR BEDROOMS

CODE COMPLIANCE: - This building is designed in compliance with the requirements of the Florida Building Code, 2004, 2007 with 2009 amendments. Structural members, cladding, fasteners and systems providing for the structural integrity of the building are designed to resist gravity loads prescribed Chapter 16 and wind loads prescribed in Section 1606.2 Simplified Provisions for Low Rise Building

#### DESIGN LOADS

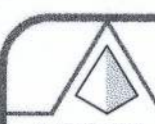
a. Uniformly Distributed Live Loads		(Section 1604.1)	
Floor Live Load	na	psf	
b. Roof Live Loads		(Section 1604.6)	
6:12 Pitch	16	psf	
c. Wind Loads		(Section 1606.2)	
1.) Enclosure Classification	Enclosed		
2.) Basic Wind Speed (3 second gust)	110	mph	
3.) Wind Importance Factor, Iw	1.0		
4.) Exposure Category	B		
5.) Internal Pressure Coefficients:	+0.18, -0.18		
6.) Design Wind Pressures for Doors and Windows			
	Opening Area (sf)	Inward Pressure (psf)	Outward Pressure (psf)
	0-10	21.8	-29.1
	11-20	20.8	-27.2
	21-50	19.5	-24.6
	51-100	18.5	-22.6

#### ELECTRICAL LEGEND

- 44" DUPLEX CONVENIENCE RECEPTACLE WITH GROUND (44" DENOTES HEIGHT A.F.F., F. OTHER THAN STD.) (GFI/GFCI DENOTES GROUND FAULT CIRCUIT INTERRUPTER) (WP DENOTES WEATHER PROOF)
- SPECIAL RECEPTACLE WITH GROUND, SEE SPECIFICATIONS
- SINGLE POLE SWITCH AT STANDARD HEIGHT
- THREE WAY SWITCH AT STANDARD HEIGHT
- TELEPHONE OUTLET
- CEILING MOUNTED EXHAUST FAN VENTED TO EXTERIOR
- CABLE TV OUTLET
- ELECTRICAL DISTRIBUTION PANEL
- SMOKE DETECTOR
- THERMOSTAT

#### Square Footage

Living... 1,574  
Garage... 000  
Entry... 36  
Porch... 000  
Total... 1,610



HOUSE CRAFT HOMES, L.L.C.

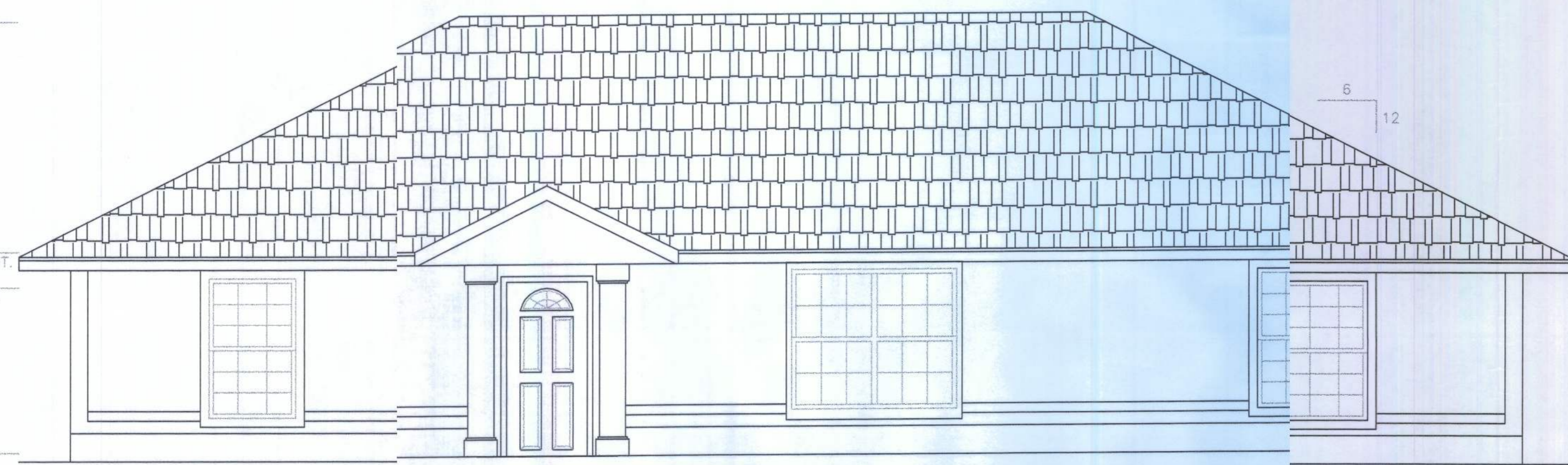
12523 NW U.S. Hwy. 441 - Alachua, FL 32615  
Phone: (386) 462-5323/FAX: (386) 462-1509

Job name: BROWN  
Model: CUSTOM Type: PLAN  
Location: J.D.H. Drawn By: J.D.H.  
Checked By: J.D.H. Revisio Date: Date  
Scale: 1/4"=1' Date: 3/15/1 Sheet: 3 of 4

16'-0"  
TOTAL HEIGHT

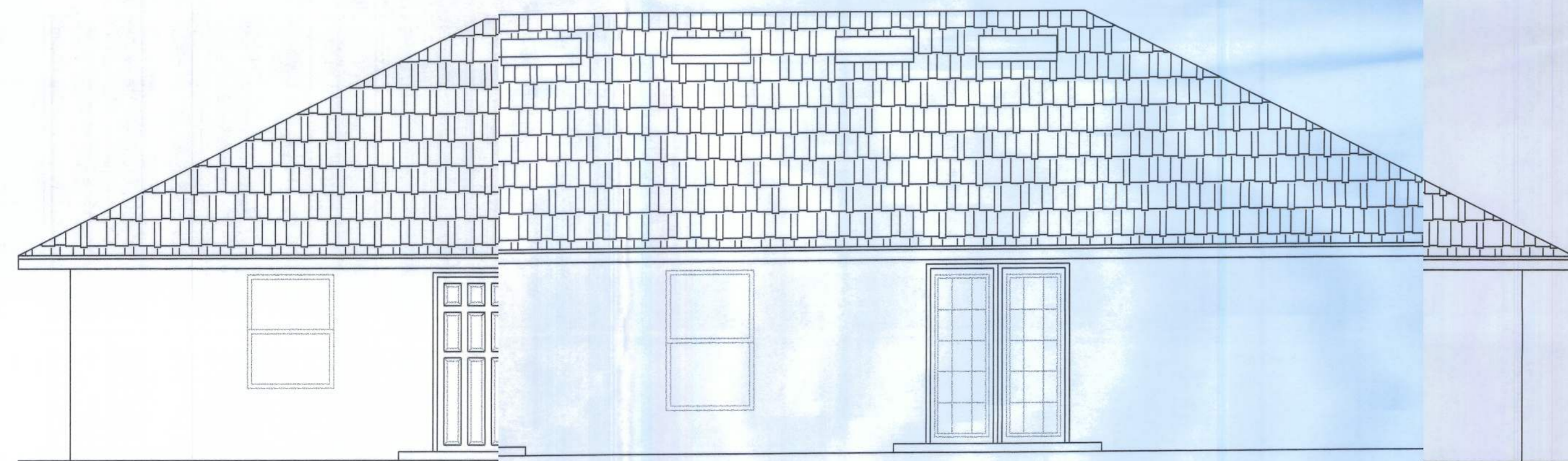
8'-0"  
TRUSS BRNG. HT.  
6'-0"  
WIND. HEAD HT.

0'-0"  
A.F.F.



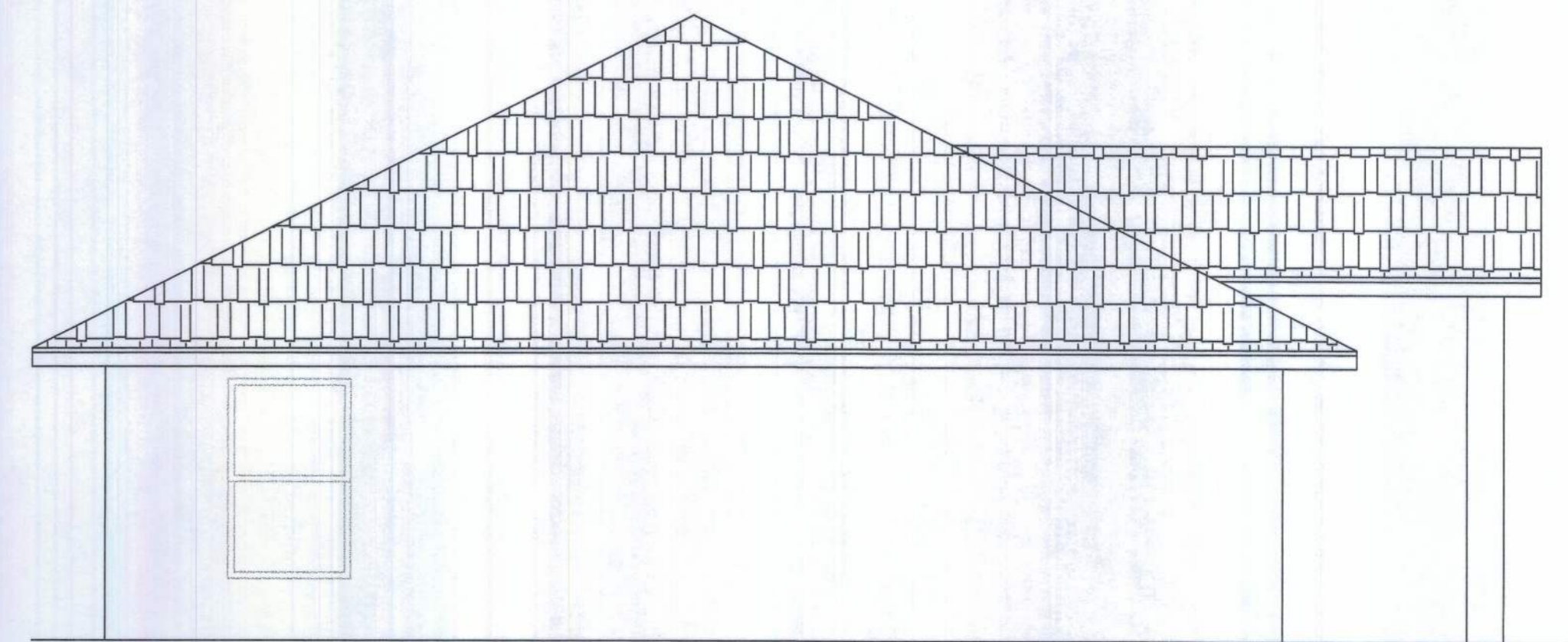
### FRONT ELEVATION

SCALE: 1/4"=1'-0"



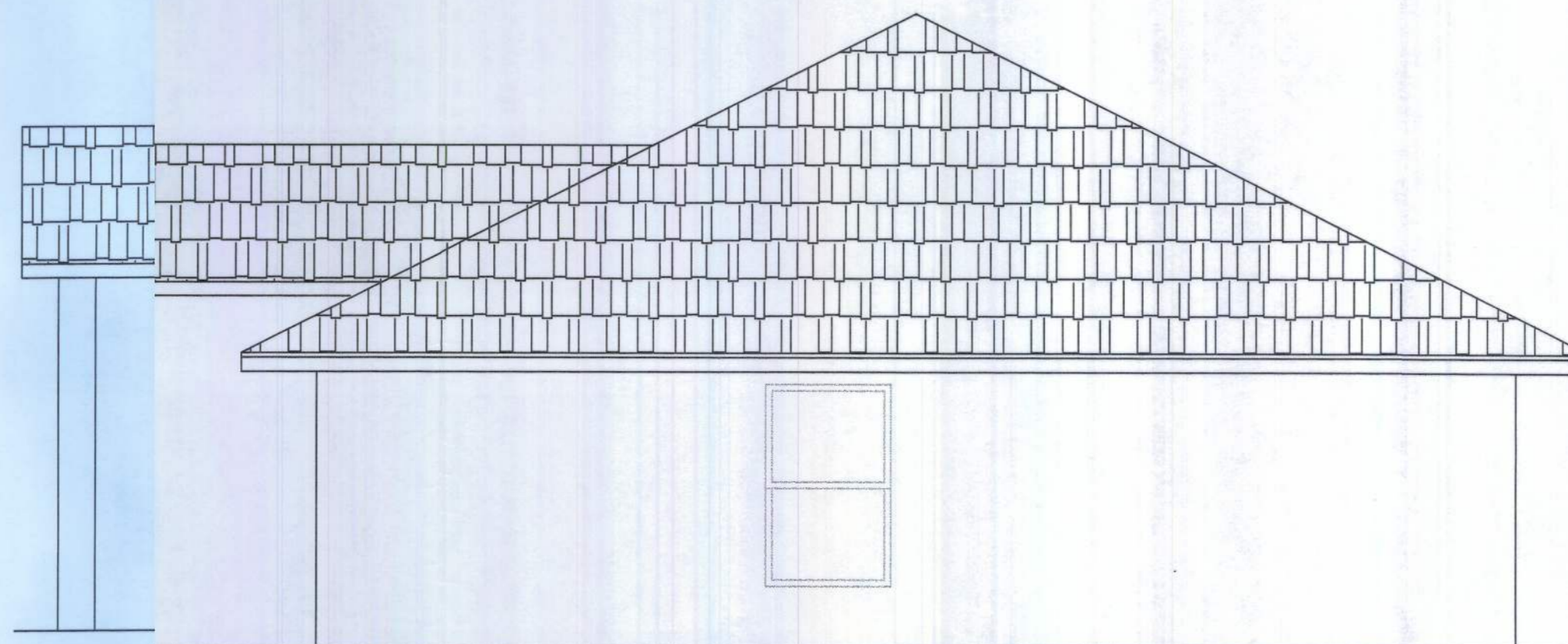
### BACK ELEVATION

SCALE: 1/4"=1'-0"



### LEFT ELEVATION

SCALE: 1/4"=1'-0"



### RIGHT ELEVATION

SCALE: 1/4"=1'-0"

#### ROOF VENT SCHEDULE

1,574 SQ. FT./300 = 5.25 SQ. FT. VENT REQUIRED

176 L. FT. x2/35 = 10.06 SQ. FT. VENT PROVIDED

4 STANDARD ROOF VENTS x 0.72 = 3.6 SQ. FT. PROVIDED

5.25 REQUIRED = 15.31 PROVIDED



HOUSE CRAFT HOMES, L.L.C.

12523 NW U.S. Hwy. 441 - Alachua, FL 32615  
Phone: (386) 462-5323/FAX: (386) 462-1509

Job name:

BROWN

Model:

CUSTOM

Type:

ELEVATIONS

Location:

Drawn By:

J.D.H.

Checked By:

J.D.H.

Revision Date:

Date

Scale: 1/4"=1'

Date: 3/15/11

Sheet: 4 of 4

# CMU EMBEDD TRUSS STRAP TABLE

UPLIFT LBS.	TRUSS CONNECTOR	MASONRY
< 1040	META20	7-104, 1 1/2"
< 1490	META20	10-104, 1 1/2"
< 1735	META24	14-104, 1 1/2"
< 1780	LGT2	7-174, 2" x 1/2" TITEN IN BLOCK
< 1900	(2) META22	9-104, 1 1/2" EA.
< 2130	META20	17-104, 1 1/2"
< 2310	META24	21-104, 1 1/2"
< 3965	MGT	16-104 TO TRUSS
		5/8" x 14" ROD w/ 1/2" EMBEDMENT IN FILLED CELL

All connectors are Simpson Strongtie (u.n.c.)

NOTE: SPECIFIED NUMBER OF FASTENERS MAY BE REDUCED PER SST CATALOG.

PRE-ENGINEERED WOOD ROOF TRUSSES @ 24" O.C. SELECT TRUSS CONNECTORS FROM STRAP TABLE PER TRUSS UPLIFT LOADS

7/16" OSB ROOF SHEATHING UNBLOCKED NAILED TO ROOF FRAMING w/ .113" X 2 3/8" RING SHANK NAILS @ 8" OC ON EDGES & INTERMEDIATE SUPPORTS 4" OC ON GABLES

1/2" GYP. 1x2 PT FURRING INSULATION BOARD RA

8" BOND BEAM POURED SOLID (3000 PSI CONC. REINF. W/ (1) #5 REBAR CONT. 2" FROM TOP

PRE MANUFACTURED LINTEL TO BE SIZED BY MANUFACTURER (ANY ROD LINTEL STEEL IS IN ADDITION TO BOND BEAM STEEL)

APPROVED WINDOW OF BUILDERS CHOICE

CMIT SILL FOR WINDOWS PLACED FLUSH WITH EXTERIOR SURFACE

8" MASONRY CMU

3/3" CLEAN OUT PORT AT EACH CELL TYPICAL

NOTE: VERTICAL STEEL SHOWN ON SECTION ASSUMES 2'-0" MAXIMUM BELOW SLAB & 8'-0" MAXIMUM ABOVE SLAB INCREASE VERTICAL STEEL TO (1) #5 VERTICAL @ 4'-0" OC FOR 3'-4" MAXIMUM BELOW SLAB & 8'-0" MAXIMUM ABOVE SLAB

SEE FOOTING DETAILS

## W6 - SINGLE - STORY CMU WALL SECTION

SCALE: 1/2"=1'-0" REV-06-JAN-05

PRE-ENGINEERED WOOD ROOF TRUSSES @ 24" O.C. SELECT TRUSS CONNECTORS FROM STRAP TABLE PER TRUSS UPLIFT LOADS

7/16" OSB ROOF SHEATHING UNBLOCKED NAILED TO ROOF FRAMING w/ .113" X 2 3/8" RING SHANK NAILS @ 8" OC ON EDGES & INTERMEDIATE SUPPORTS 4" OC ON GABLES

ATTACH PORCH BEAM TO COLUMN w/ SIMPSON MHETA20

12x12 CMU COLUMN BLOCK GROUTED SOLID

(2) #5 VERT. WITH STD HOOK IN FOOTING

4" CONCRETE SLAB 2500 - PSI @ 28 DAYS

6"x6"W1.4XW1.4 W.W.M. PLACED @ 2" DEPTH ON CHAIRS OR FIBERMESH

TERMITE TREATED FILL, EA. LIFT COMPACTED TO MIN 95% MOD. PROCTOR

2'-6" X 2'-6" X 1'-0" PAD FOOTING

(4) #5 EACH WAY

W51 - CMU PORCH COLUMN

SCALE: 1/2"=1'-0" REV-24-JUL-04

(1) #5 IN FULLY GROUTED CE SEE WALL SECTION FOR LOCATION (MIN. 30" LAPS)

4" CONCRETE SLAB 2500 - PSI @ 28 DAYS

6"x6"W1.4XW1.4 W.W.M. PLACED @ 2" DEPTH ON CHAIRS OR FIBERMESH

6 MIL VAPOR BARRIER W/ 6" LAPS SEALED W/ POLY TAPE

TERMITE TREATED FILL, EA. LIFT COMPACTED TO MIN 95% MOD. PROCTOR

(2) #5 CONTINUOUS

F14 - CMU WALL OTING - FLOATING SLAB

SCALE: 1/2"=1'-0" REV-06-JAN-05

SET PRECAST LINTEL IN FULL HEAD & 8" INTS.

GROUT ALL REINFORCED CELLS

PLACE BOTTOM REBAR IN LINTEL IF REI<sup>2</sup>.

AVERAGE TRUSS GRAVITY LOAD NOT TO EXCEED 1500 lb FOR OPENINGS TO 16'-0"

MAXIMUM TRUSS LOAD NOT TO EXCEED 1500 lb FOR OPENINGS TO 16'-0"

STIRRUPS NOT REQUIRED IF ABOVE CONDITIONS ARE MET. IF THE ABOVE CONDITIONS ARE NOT MET SEE DETAIL BELOW AND PLAN

#3 STIRRUPS @ 8" O w/ 135° HOOKS

BOTTOM REINFORC PROVIDED IN LINTEL (SEE REINFORCING SCHEDULE)

REINFORCING SCHEDULE

LENGTH BOTTOM STEEL

UP TO 5'-0" (2) - #5 REBAR

UP TO 10'-0" (2) - #5 REBAR

UP TO 14'-0" (2) - #5 REBAR

UP TO 19'-4" (2) - #5 REBAR

UP TO 19'-4" (2) - #5 REBAR

UP TO 19'-4" (2) - #5 REBAR

UP TO 19'-4" (2) - #5 REBAR

UP TO 19'-4" (2) - #5 REBAR

UP TO 19'-4" (2) - #5 REBAR

UP TO 19'-4" (2) - #5 REBAR

UP TO 19'-4" (2) - #5 REBAR

UP TO 19'-4" (2) - #5 REBAR

UP TO 19'-4" (2) - #5 REBAR

UP TO 19'-4" (2) - #5 REBAR

(1) #5 IN FULLY GROUTED CELL SEE WALL SECTION FOR LOCATION (MIN. 30" LAPS)

4" CONCRETE SLAB 2500 - PSI @ 28 DAYS

6"x6"W1.4XW1.4 W.W.M. PLACED @ 2" DEPTH ON CHAIRS OR FIBERMESH

6 MIL VAPOR BARRIER W/ 6" LAPS SEALED W/ POLY TAPE

TERMITE TREATED FILL, EA. LIFT COMPACTED TO MIN 95% MOD. PROCTOR

(2) #5 CONTINUOUS

F15 - ALT. CMU WALL FOOTING - MONOLITHIC SLAB

SCALE: 1/2"=1'-0" REV-28-JUL-04

SET PRECAST LINTEL IN FULL HEAD & 8" INTS.

GROUT ALL REINFORCED CELLS

PLACE BOTTOM REBAR IN LINTEL IF REI<sup>2</sup>.

AVERAGE TRUSS GRAVITY LOAD NOT TO EXCEED 1500 lb FOR OPENINGS TO 16'-0"

MAXIMUM TRUSS LOAD NOT TO EXCEED 1500 lb FOR OPENINGS TO 16'-0"

STIRRUPS NOT REQUIRED IF ABOVE CONDITIONS ARE MET. IF THE ABOVE CONDITIONS ARE NOT MET SEE DETAIL BELOW AND PLAN

#3 STIRRUPS @ 8" O w/ 135° HOOKS

BOTTOM REINFORC PROVIDED IN LINTEL (SEE REINFORCING SCHEDULE)

REINFORCING SCHEDULE

LENGTH BOTTOM STEEL

UP TO 5'-0" (2) - #5 REBAR

UP TO 10'-0" (2) - #5 REBAR

UP TO 14'-0" (2) - #5 REBAR

UP TO 19'-4" (2) - #5 REBAR

UP TO 19'-4" (2) - #5 REBAR

UP TO 19'-4" (2) - #5 REBAR

UP TO 19'-4" (2) - #5 REBAR

UP TO 19'-4" (2) - #5 REBAR

UP TO 19'-4" (2) - #5 REBAR

UP TO 19'-4" (2) - #5 REBAR

UP TO 19'-4" (2) - #5 REBAR

UP TO 19'-4" (2) - #5 REBAR

UP TO 19'-4" (2) - #5 REBAR

UP TO 19'-4" (2) - #5 REBAR

(1) #5 IN FULLY GROUTED CELL SEE WALL SECTION FOR LOCATION (MIN. 30" LAPS)

4" CONCRETE SLAB 2500 - PSI @ 28 DAYS

6"x6"W1.4XW1.4 W.W.M. PLACED @ 2" DEPTH ON CHAIRS OR FIBERMESH

6 MIL VAPOR BARRIER W/ 6" LAPS SEALED W/ POLY TAPE

TERMITE TREATED FILL, EA. LIFT COMPACTED TO MIN 95% MOD. PROCTOR

(2) #5 CONTINUOUS

F2 - PORCH SLAB

SCALE: 1/2"=1'-0" REV-22-AUG-03

SET PRECAST LINTEL IN FULL HEAD & 8" INTS.

GROUT ALL REINFORCED CELLS

PLACE BOTTOM REBAR IN LINTEL IF REI<sup>2</sup>.

AVERAGE TRUSS GRAVITY LOAD NOT TO EXCEED 1500 lb FOR OPENINGS TO 16'-0"

MAXIMUM TRUSS LOAD NOT TO EXCEED 1500 lb FOR OPENINGS TO 16'-0"

STIRRUPS NOT REQUIRED IF ABOVE CONDITIONS ARE MET. IF THE ABOVE CONDITIONS ARE NOT MET SEE DETAIL BELOW AND PLAN

#3 STIRRUPS @ 8" O w/ 135° HOOKS

BOTTOM REINFORC PROVIDED IN LINTEL (SEE REINFORCING SCHEDULE)

REINFORCING SCHEDULE

LENGTH BOTTOM STEEL

UP TO 5'-0" (2) - #5 REBAR

UP TO 10'-0" (2) - #5 REBAR

UP TO 14'-0" (2) - #5 REBAR

UP TO 19'-4" (2) - #5 REBAR

UP TO 19'-4" (2) - #5 REBAR

UP TO 19'-4" (2) - #5 REBAR

UP TO 19'-4" (2) - #5 REBAR

UP TO 19'-4" (2) - #5 REBAR

UP TO 19'-4" (2) - #5 REBAR

UP TO 19'-4" (2) - #5 REBAR

UP TO 19'-4" (2) - #5 REBAR

UP TO 19'-4" (2) - #5 REBAR

UP TO 19'-4" (2) - #5 REBAR

UP TO 19'-4" (2) - #5 REBAR

(1) #5 IN FULLY GROUTED CELL SEE WALL SECTION FOR LOCATION (MIN. 30" LAPS)

4" CONCRETE SLAB 2500 - PSI @ 28 DAYS

6"x6"W1.4XW1.4 W.W.M. PLACED @ 2" DEPTH ON CHAIRS OR FIBERMESH

6 MIL VAPOR BARRIER W/ 6" LAPS SEALED W/ POLY TAPE

TERMITE TREATED FILL, EA. LIFT COMPACTED TO MIN 95% MOD. PROCTOR

(2) #5 CONTINUOUS

F4 - INTERIOR BEARING FOOTING

SCALE: 1/2"=1'-0" REV-22-AUG-03

SET PRECAST LINTEL IN FULL HEAD & 8" INTS.

GROUT ALL REINFORCED CELLS

PLACE BOTTOM REBAR IN LINTEL IF REI<sup>2</sup>.

AVERAGE TRUSS GRAVITY LOAD NOT TO EXCEED 1500 lb FOR OPENINGS TO 16'-0"

MAXIMUM TRUSS LOAD NOT TO EXCEED 1500 lb FOR OPENINGS TO 16'-0"

STIRRUPS NOT REQUIRED IF ABOVE CONDITIONS ARE MET. IF THE ABOVE CONDITIONS ARE NOT MET SEE DETAIL BELOW AND PLAN

#3 STIRRUPS @ 8" O w/ 135° HOOKS

BOTTOM REINFORC PROVIDED IN LINTEL (SEE REINFORCING SCHEDULE)

REINFORCING SCHEDULE

LENGTH BOTTOM STEEL

UP TO 5'-0" (2) - #5 REBAR

UP TO 10'-0" (2) - #5 REBAR

UP TO 14'-0" (2) - #5 REBAR

UP TO 19'-4" (2) - #5 REBAR

UP TO 19'-4" (2) - #5 REBAR

UP TO 19'-4" (2) - #5 REBAR

UP TO 19'-4" (2) - #5 REBAR

UP TO 19'-4" (2) - #5 REBAR

UP TO 19'-4" (2) - #5 REBAR

UP TO 19'-4" (2) - #5 REBAR

UP TO 19'-4" (2) - #5 REBAR

UP TO 19'-4" (2) - #5 REBAR

UP TO 19'-4" (2) - #5 REBAR

UP TO 19'-4" (2) - #5 REBAR

# N9-DOOR & WINDOW BUCK ATTACHMENT

TAPCON IN FACE OF CMU 2 1/2" MIN. EDGE DISTANCE 1 1/4" MIN. EMBEDMENT 3" MIN. EDGE SPACING

WINDOWS & DOORS UP TO 6'X6'

3/16" TAPCONS @ 2' O.C. 1/4" TAPCONS @ 3' O.C.

WINDOWS & DOORS UP TO 6'X12'

3/16" TAPCONS @ 16" O.C. 1/4" TAPCONS @ 24" O.C.

SLIDERS UP TO 6'X20'W

3/16" TAPCONS @ 12" O.C. 1/4" TAPCONS @ 18" O.C.

GARAGE DOOR UP TO 16'W

3/16" TAPCONS @ 16" O.C. 1/4" TAPCONS @ 24" O.C.

GARAGE DOOR UP TO 18'W

3/16" TAPCONS @ 8" O.C. 1/4" TAPCONS @ 12" O.C.

1/2" BOLT @ 32" O.C. 1/4" TAPCON @ 32" O.C.

1/2" BOLT @ 32" O.C. 1/4" TAPCON @ 32" O.C.

1/2" BOLT @ 32" O.C. 1/4" TAPCON @ 32" O.C.

1/2" BOLT @ 32" O.C. 1/4" TAPCON @ 32" O.C.

1/2" BOLT @ 32" O.C. 1/4" TAPCON @ 32" O.C.

1/2" BOLT @ 32" O.C. 1/4" TAPCON @ 32" O.C.

1/2" BOLT @ 32" O.C. 1/4" TAPCON @ 32" O.C.

1/2" BOLT @ 32" O.C. 1/4" TAPCON @ 32" O.C.

1/2" BOLT @ 32" O.C. 1/4" TAPCON @ 32" O.C.

1/2" BOLT @ 32" O.C. 1/4" TAPCON @ 32" O.C.

1/2" BOLT @ 32" O.C. 1/4" TAPCON @ 32" O.C.

1/2" BOLT @ 32" O.C. 1/4" TAPCON @ 32" O.C.

1/2" BOLT @ 32" O.C. 1/4" TAPCON @ 32" O.C.

1/2" BOLT @ 32" O.C. 1/4" TAPCON @ 32" O.C.

1/2" BOLT @ 32" O.C. 1/4" TAPCON @ 32" O.C.

1/2" BOLT @ 32" O.C. 1/4" TAPCON @ 32" O.C.

1/2" BOLT @ 32" O.C. 1/4" TAPCON @ 32" O.C.

1/2" BOLT @ 32" O.C. 1/4" TAPCON @ 32" O.C.

1/2" BOLT @ 32" O.C. 1/4" TAPCON @ 32" O.C.

1/2" BOLT @ 32" O.C. 1/4" TAPCON @ 32" O.C.

# MASONRY NOTES:

MASONRY CONSTRUCTION AND MATERIALS FOR THIS PROJECT SHALL CONFORM TO ALL REQUIREMENTS OF THE SPECIFICATION FOR MASONRY STRUCTURES (ACI 530.1/ASCE 6/TMS 602). THE CONTRACTOR AND MASON MUST IMMEDIATELY, BEFORE PROCEEDING, NOTIFY THE ENGINEER OF ANY CONFLICTS BETWEEN ACI 530.1-02 AND THESE DESIGN DRAWINGS. ANY EXCEPTIONS TO ACI 530.1-02 MUST BE APPROVED BY THE ENGINEER IN WRITING.

ACI 530.1-02 Section

Specific Requirements

1.4A Compressive strength

8" block bearing walls F'm = 1500 psi

2.1 Mortar

ASTM C 270, Type N, UNO

2.2 Grout

ASTM C 476, admixtures require approval

2.3 CMU standard

ASTM C 90-02, Normal weight, Hollow, medium weight face brick, 8"x8"x16" running bond and 12"x12" or 16"x16" column block

2.4 Reinforcing bars, #3 - #11

ASTM 615, Grade 60, Fy = 60 ksi, Lap splices min 48 bar dia, (30" for #5)

2.4F Coating for corrosion protection

Anchors, sheet metal ties completely embedded in mortar or grout, ASTM A525, Class G60, 0.60 oz/lb or 304SS

2.4F Coating for corrosion protection

Joint reinforcement in walls exposed to moisture or wire ties, anchors, sheet metal ties not completely embedded in mortar or grout, ASTM A153, Class B2, 1.50 oz/lb or 304SS

3.3.E.2 Pipes, conduits, and accessories

Any not shown on the project drawings require engineering approval.

3.3.E.2 Movement joints

Contractor assumes responsibility for type and location of movement joints if not detailed on project drawings.

CONCRETE: MINIMUM COMPRESSIVE STRENGTH OF CONCRETE AT 28 DAYS SHALL BE F'c = 3000 PSI. WHERE EXCESS WATER IS ADDED TO THE CONCRETE SO THAT ITS SERVICABILITY IS DEGRADED, THE ATTAINMENT OF REQUIRED STRENGTH SHALL NO RELEASE THE CONTRACTOR FROM PROVIDING SUCH MODIFICATIONS AS MAY BE REQUIRED BY THE ENGINEER TO PROVIDE A SERVICEABLE MEMBER OR SURFACE. ALL CONCRETE SHALL BE VIBRATED. NO REPAIR OR RUBBING OF CONCRETE SURFACES SHALL BE MADE PRIOR TO INSPECTION BY AND APPROVAL OF THE ENGINEER, OWNER OR HIS REPRESENTATIVE.

WELDED WIRE REINFORCED SLAB: 6" x 6" W1.4 x W1.4, FB = 8