



Detailed drawings, representative samples of the test specimen, and a copy of this report will be retained by ATI for a period of four years. The above results were secured by using the designated test methods and they indicate compliance with the performance requirements of the above referenced specification. This report does not constitute certification of this product, which may only be granted by the certification program administrator.

For ARCHITECTURAL TESTING, INC:

Adam Fodor
Technician

David G. Moyer, Vice President
Director of Testing Services

AF:tjp/nlb
01-39039.03

**Test Results:**

The results are tabulated as follows:

<u>Paragraph</u>	<u>Title of Test - Test Method</u>	<u>Results</u>	<u>Allowed</u>
<u>Test Specimen #1:</u> F-C35 72 x 96			
	Air Infiltration per ASTM E 283 (See Note #1) @ 1.57 psf (25 mph)	0.04 cfm/ft ²	0.3 cfm/ft ² max.
<i>Note #1: The tested specimen meets (or exceeds) the performance levels specified in AAMA/NWWDA 101/I.S. 2-97 for air infiltration.</i>			
	Water Resistance per ASTM E 547 WTP = 4.5 psf	No leakage	No leakage
2.1.4.2	Uniform Load Structural per ASTM E 330		
<i>Note: The client opted to start test loads at a level higher than what is required in the referenced test specification, as reported under "Optional Performance" paragraph 4.4.2.</i>			
	Welded Corner Test	Meets as stated	Meets as stated
	Forced Entry Resistance per ASTM F 588-97		
	Type: D Grade: 40		
	Hand Manipulation Test	No entry	No entry
<u>Optional Performance</u>			
4.3	Water Resistance per ASTM E 547 and 331 WTP = 12.0 psf	No leakage	No leakage
	Uniform Load Structural per ASTM E 330 (Measurements reported were taken on the jamb) @ 58.5 psf (exterior) @ 63.0 psf (interior)	<0.01" <0.01"	0.35" max. 0.35" max.
<u>Test Specimen #2:</u> F-C50 65 x 84*			
<u>Optional Performance</u>			
	Uniform Load Structural per ASTM E 330 (Measurements reported were taken on the jamb) @ 75.0 psf (exterior) @ 75.0 psf (interior)	<0.01" <0.01"	0.34" max. 0.34" max.



Test Specimen Description: (Continued)

Test Specimen #2: F-C50 65 x 84*

Overall Size: 5' 5" wide by 6' 11-3/4" high

Fixed Daylight Opening Size: 5' 1" wide by 6' 8" high

Glazing Type: 7/8" thick sealed insulating glass fabricated from two sheets of 1/8" thick clear annealed glass.

The following descriptions apply to all specimens.

Finish: All PVC was white

Glazing Details: The fixed lite was interior glazed onto double-sided adhesive foam tape and secured with PVC snap-fit glazing beads.

Frame Construction: The frame was constructed of extruded PVC members with mitered and welded corners. The interior frame pocket utilized a PVC snap-fit cover.

Drainage:

<u>Description</u>	<u>Quantity</u>	<u>Location</u>
1/2" wide by 1/8" deep weepslot	2	One in each end of sill, draining the glazing pocket into the exterior sill hollow
1/2" wide by 1/4" deep weepslot	2	One in each end of sill, draining the glazing pocket into the exterior sill hollow
1" wide by 1/8" tall weepslot	2	One in each end of sill face, draining the exterior sill hollow

Reinforcement: No reinforcement was utilized.

Installation: The test specimens were installed into 2" x 8" wood test bucks utilizing the integral nailing fin. The nailing fin was bedded in polyurethane sealant and secured with 1-1/2" long drywall screws in every hole around the perimeter.



Architectural Testing

AAMA/NWWDA 101/I.S.2-97 TEST REPORT

Rendered to:

MI HOME PRODUCTS, INC.
650 West Market Street
Gratz, Pennsylvania 17030-0370

Report No: 01-39039.03
Test Date: 03/09/01
Report Date: 10/19/01
Expiration Date: 03/09/05

Project Summary: Architectural Testing, Inc. (ATI) was contracted to witness tests on two Series/Model 4250, 4550, 8500, 8540, PVC fixed windows at the MI Home Products, Inc. in-plant test facility in Elizabethville, Pennsylvania. The samples tested successfully met the performance requirements for the following ratings: Test Specimen #1 F-C35 72 x 96; Test Specimen #2F-C50 65 x 84*. Test specimen descriptions and results are reported herein.

General Note: An asterisk (*) next to the performance grade indicates that the size tested for optional performance was smaller than the gateway size for the product type and class.

Test Specification: The test specimen was evaluated in accordance with AAMA/NWWDA 101/I.S.2-97, *Voluntary Specifications for Aluminum, Vinyl (PVC) and Wood Windows and Glass Doors*.

Test Specimen Description:

Series/Model: 4250, 4550, 8500, 8540

Type: PVC Fixed Window

Test Specimen #1: F-C35 72 x 96

Overall Size: 5' 11-1/2" wide by 7' 11-1/2" high

Fixed Daylight Opening Size: 5' 7-3/4" wide by 7' 7-3/4" high

Glazing Type: 7/8" thick sealed insulating glass fabricated from two sheets of 3/16" thick tempered transparent glass.

130 Derry Court
York, PA 17402-9405
phone: 717.764.7700
fax: 717.764.4129
www.archtest.com



**AAMA/NWWDA 101/I.S.2-97
TEST REPORT SUMMARY**

Rendered to:

MI HOME PRODUCTS, INC.

**SERIES/MODEL: 4250, 4550, 8500, 8540
TYPE: PVC Fixed Window**

Title of Test	Results	
	Test Specimen #1	Test Specimen #2
Ratings	F-C35 72 x 96	F-C50 65 x 84*
Overall Design Pressure	35 psf	50 psf
Air Infiltration	0.04 cfm/ft ²	N/A
Water Resistance	12.0 psf	N/A
Structural Test Pressure	+58.5, -63.0 psf	+75.0 psf
Deglazing	Passed	Passed
Forced Entry Resistance	Grade 40	N/A

Reference should be made to Report No. 01-39039.03 for complete test specimen description and data.

For ARCHITECTURAL TESTING, INC.


Adam Fodor, Technician

AF:tjp/nlb

8540 SH & PW SERIES - MILE PER HOUR (MPH) MAXIMUM SIZE CHART

SERIES/TYPE	MPH ZONE(S)	REQUIRED MULLION	MAXIMUM SIZES ALLOWED		
			SINGLE UNIT	TWIN UNIT	TRIPLE UNIT
8540 SH OR PW FIN FRAME	UP TO 140 MPH	N/A	N/A	N/A	N/A
8540 SH OR PW FIN FRAME	UP TO 140 MPH	VERT MULL #M-1926 & V-698 CAP (2)	N/A	4-0 X 6-0 TWIN (FIELD MULLED)	4-0 X 6-0 TRIPLE (FIELD MULLED)
8540 SH OR PW FIN FRAME	UP TO 140 MPH	HORIZ MULL #M-1926 & V-698 CAP (2)	4-0 X 6-0 W/TRANSOM*	2-6 X 6-0 TWIN W/TRANSOM* (FIELD MULLED)	N/A

*¹ All Transoms (1, 2, & 3-Lites) must be continuous frame.
 *² Transom units must be a minimum of 1/0 tall. The maximum transom height is one half the width of the transom.
 Both Single Hung & Picture Windows can be used in combination up to the maximum sizes listed above.

MI HOME PRODUCTS

VERTICAL MULLION DESIGN LOAD CAPACITIES FOR ALUMINUM TUBE MULLION (DIE # M-1926)

WDW. WIDTH > MULLION SPAN V	19.125	24.000	26.500	36.000	37.000	48.000	53.125
36.000	508	446	426	396	396	396	396
37.375	465	406	387	354	354	354	354
48.000	262	223	209	178	176	167	167
50.625	232	197	184	155	154	143	142
60.000	145	121	113	92	91	81	79
63.000	124	104	96	78	77	68	65
72.000	81	67	62	50	49	42	40
72.250	80	67	62	49	48	42	40

CHART APPLIES ONLY TO EXTRUDED ALUMINUM MULLION (DIE NO: M-1926)

READ WINDOW WIDTH AND HEIGHT IN INCHES.

DESIGN PRESSURE VALUES ON THIS CHART ARE IN PSF.

WINDOW WIDTH DIMENSIONS REPRESENT THE WIDTH OF EACH WINDOW IN A SINGLE OPENING, NOT THE OVERALL WIDTH OF THE OPENING.

DESIGN PRESSURE VALUES SHOWN ON THE ABOVE CHART IS NOT LIMITED TO ONLY TWO WINDOWS IN A SINGLE OPENING. CAPACITIES APPLY TO ANY NUMBER OF WINDOWS IN A SINGLE OPENING, PROVIDED WINDOW WIDTH AND MULLION SPAN ARE NOT EXCEEDED.

$D_{max} = L / 175$

INSTALLATION OF MULLION: MULLION MUST BE ANCHORED TO SUBSTRATE. CONNECTION MUST BE DESIGNED TO ADEQUATELY TRANSFER LOAD TO THE STRUCTURE. SEE MANUFACTURER'S MULLION INSTALLATION DETAILS.

PREPARED BY:

PRODUCT TECHNOLOGY CORPORATION

1150 LOUISIANA AVE

SUITE 6

WINTER PARK, FLORIDA 32789

PHONE 407 622-6334 / FAX 407 622-6335

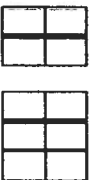
MAR. 21, 02

02-0550



STRUCTURAL VERTICAL MULLION #M-1926

3540/8540 Fin



Step 1. Remove nail fins (and J-flange if applicable) of sides of windows to be joined.

Step 2. Place windows 1 1/8" apart, then snap in exterior vinyl mull cover.

Note: Make sure the snap hooks on both ends of interior vinyl mull cover is notched back 1/4" to clear corner welds on window frame. The exterior vinyl cap only requires this notch at the bottom since the top is to be trimmed 1/4" short to butt against the drip cap.

Step 3. Lay windows, exterior face down, on a padded flat work surface. Place aluminum mull between windows as shown.

Step 4. Run a full length bead of caulk (2 places) between mull & jamb, then snap in interior vinyl mull cover.

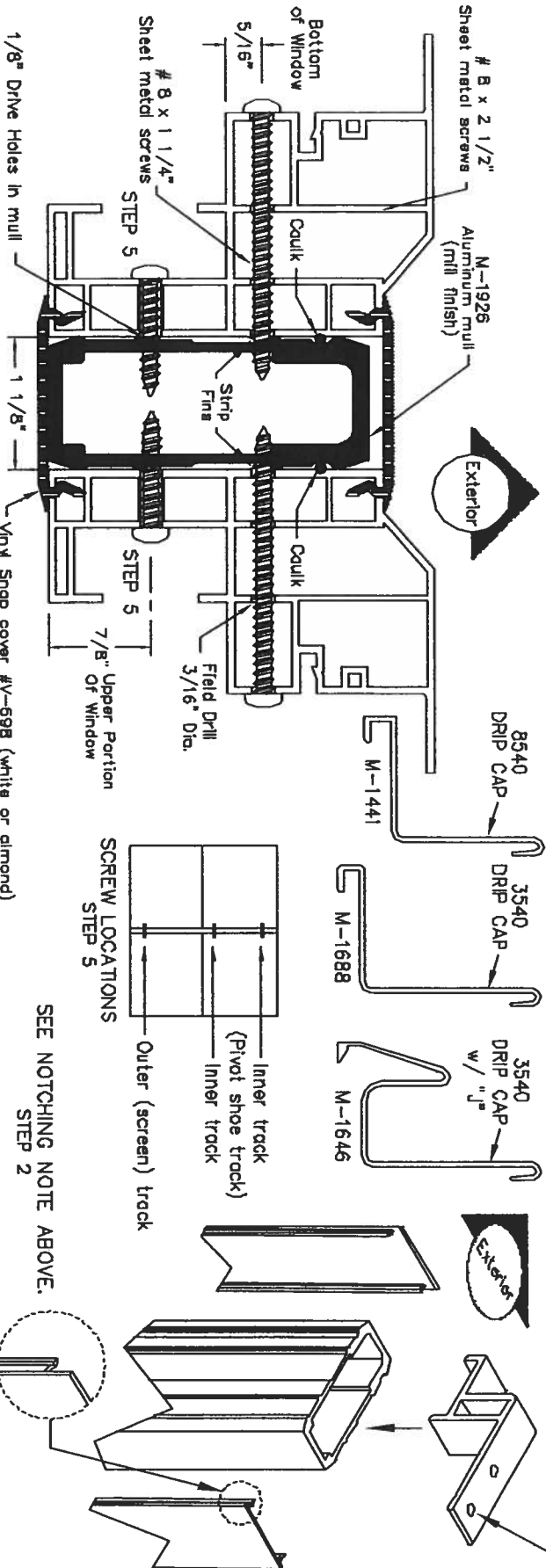
Step 5. Drill holes through vinyl frame only with 3/16" drill bit in locations shown. Drill two holes in each jamb above the meeting rail through interior tracks. Drill one hole in each jamb 3 1/2" up from bottom of window through screen track.

Step 6. Drill through aluminum mullion with 1/8" drill bit.

Step 7. Attach windows to mullion using 2 # 8 x 2 1/4" screws through bottom holes, and 4 # 8 x 1" screws through remaining holes. (Screws not furnished).

Step 8. Before lifting into rough opening, drill two holes in each clip and insert into each end of mull as shown below with tab pointing to inside. Fasten each clip tab to construction with two #10 x 1 1/2" screws for structural integrity.

Step 9. The large hole created by the hollow mullion will allow water leakage into the interior unless a full length aluminum drip cap (ordered separately in 16 ft. lengths) is installed across the head. Specify M-1799 for standard frames, and M-1800 for "J-flange" frames. Be sure to notch out mull grooves on exterior face of head so "hook" on drip cap can run through at the center.



JAMBS, MULL AND DRIP CAPS SHOWN 3/4 SCALE

NOTE: SEE REVERSE SIDE FOR DESIGN PRESSURE CAPACITIES.

MI HOME PRODUCTS

HORIZONTAL MULLION DESIGN LOAD CAPACITIES

FOR EXTRUDED ALUMINUM TUBE MULLION (M-1926)

WHEN USED FOR MULLING TRANSOM

MULL SPAN > WDW. HGT. V	24.000	26.500	37.000	48.000	53.125	60.000	74.000
26.000	1528	1135	439	217	166	109	50
36.000	1528	1135	417	198	150	98	45
38.375	1528	1135	417	195	147	96	44
48.000	1528	1135	417	191	142	91	41
50.625	1528	1135	417	191	141	90	41
60.000	1528	1135	417	191	141	89	39
63.000	1528	1135	417	191	141	89	39
72.000	1528	1135	417	191	141	89	38
72.250	1528	1135	417	191	141	89	38

NOTES:

- * CHART APPLIES ONLY TO EXTRUDED ALUMINUM MULLION (M-1926) USED HORIZONTALLY.
- * CHART ASSUMES TRANSOM HEIGHT TO BE ONE HALF MULLION SPAN.
- * WINDOW HEIGHTS SHOWN ON "Y" AXIS OF CHART DESIGNATE HEIGHT OF WINDOWS BELOW MULLION AND DO NOT INCLUDE TRANSOM HEIGHT.
- * READ MULLION SPAN AND WINDOW HEIGHT IN INCHES.
- * DESIGN PRESSURE VALUES ON THIS CHART ARE IN PSF.
- * DESIGN LOAD CAPACITIES SHOWN ON THIS CHART DO NOT CONSIDER ANY STRENGTH WHICH MAY BE OBTAINED FROM FRAME MEMBERS OF ADJACENT WINDOWS.
- * $D_{max} = L / 175$
- * INSTALLATION OF MULLION: MULLION MUST BE ANCHORED TO SUBSTRATE. CONNECTION MUST BE DESIGNED TO ADEQUATELY TRANSFER LOAD TO THE STRUCTURE. SEE MANUFACTURER'S MULLION INSTALLATION DETAILS.

PREPARED BY:

PRODUCT TECHNOLOGY CORPORATION
1150 LOUISIANA AVE.
SUITE 6
WINTER PARK, FLORIDA 32789
PHONE 407 622-6334 / FAX 407 622-6335



STRUCTURAL HORIZONTAL MULLION # M-1926

Specialty over Single Units
(and some sizes of twins)



NOTE: SINCE THIS MULLION CAN BE USED VERTICALLY OR HORIZONTALLY AND HAVE DIFFERENT INSTRUCTION SHEETS AND DP CHARTS FOR EACH, YOU MUST SPECIFY "HORIZONTAL" AND THE LENGTH REQUIRED (SAME AS I.D. SIZE).

- WHITE & ALMOND AVAILABLE
(THE MULLION IS MILL FINISH)

3540/8540 Fin

Step 1. Score and remove the nail fin from both units.

Step 2. Position horizontal mullion on top of lower unit as shown. With 1/8" drill, drill up through the frame head and into the mullion. Re-drill 1st. hole with 3/8" bit.

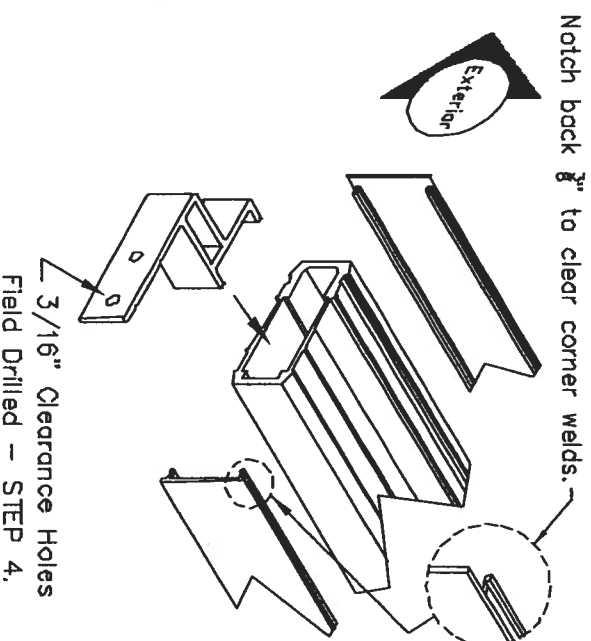
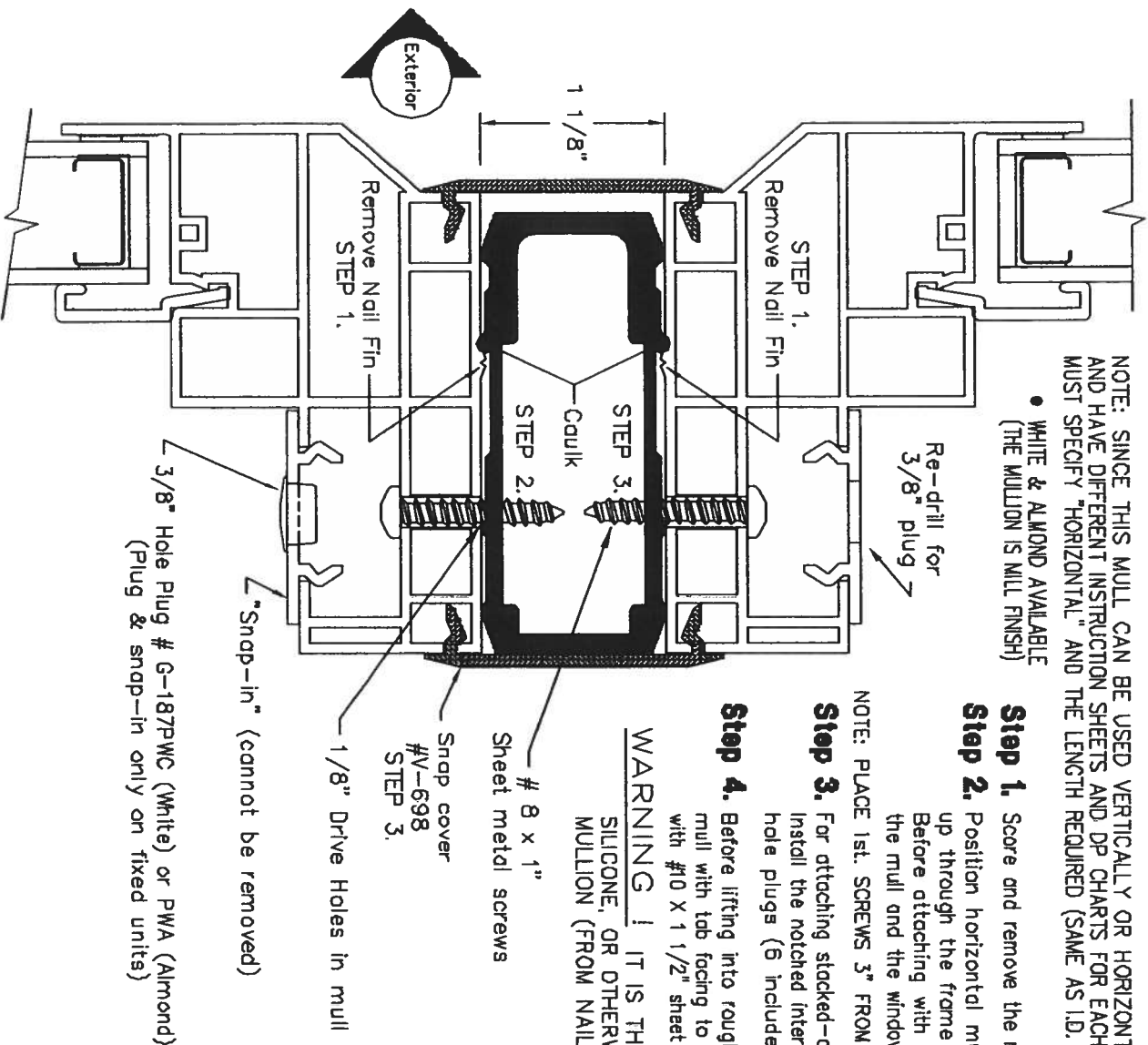
Before attaching with # 8 x 1" screws, run a full length bead of caulk between the mullion and the window. Do not over tighten the screws or distortion could occur.

NOTE: PLACE 1st. SCREWS 3" FROM EACH END AND DO NOT EXCEED 16" SPACING OF REMAINDER.

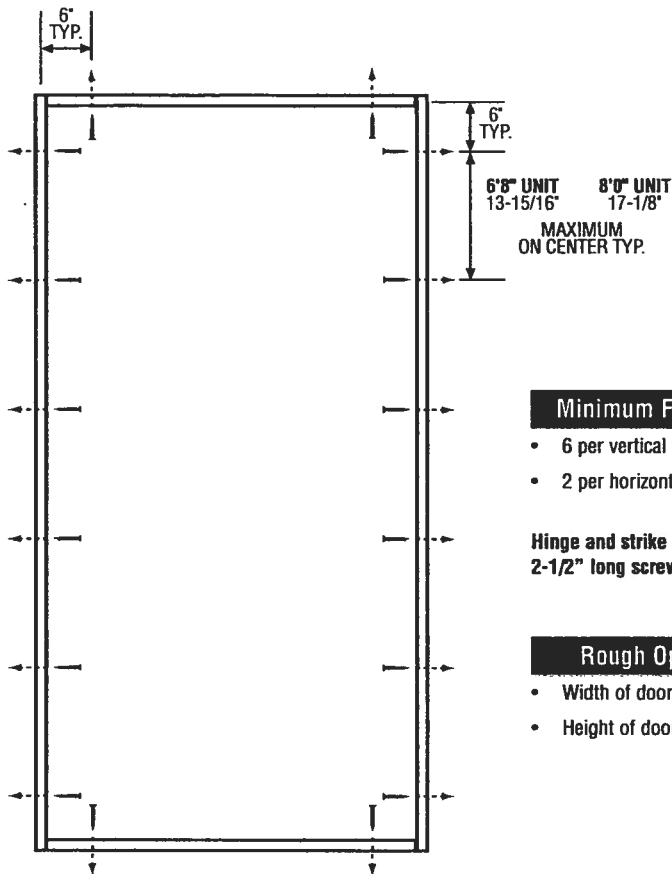
Step 3. For attaching stacked-on unit to lower unit, repeat Step 2. Install the notched interior & exterior mullion covers (viny) and install the 3/8" diameter hole plugs (6 included with mull).

Step 4. Before lifting into rough opening, drill two 3/16" holes in each clip and insert into mullion with tab facing to the inside. After window unit is installed, anchor the brackets with #10 x 1 1/2" sheet metal screws (for wood) or 3/16" x 1 1/2" Topcons (for block).

WARNING! IT IS THE RESPONSIBILITY OF THE INSTALLER TO PLUG WITH SILICONE, OR OTHERWISE "CAP OFF", THE LARGE HOLE IN THE END OF THE MULLION (FROM NAIL FIN OUTWARD) IN ORDER TO PREVENT WATER LEAKS.



SINGLE DOOR



Minimum Fastener Count

- 6 per vertical framing member
- 2 per horizontal framing member

Hinge and strike plates require two 2-1/2" long screws per location.

Rough Opening (RO)

- Width of door unit plus 1/2"
- Height of door unit plus 1/4"

Warnock Hervey Test Data Review Certificate #3026447A; #3026447B; #3026447C and COP/Test Report Validation Matrix #3026447A-001, 002, 003; #3026447B-001, 002, 003; #3026447C-001, 002, 003 provides additional information - available from the ITS/WH website (www.itswh.com), the Masonite website (www.masonite.com) or the Masonite technical center.

Latching Hardware:

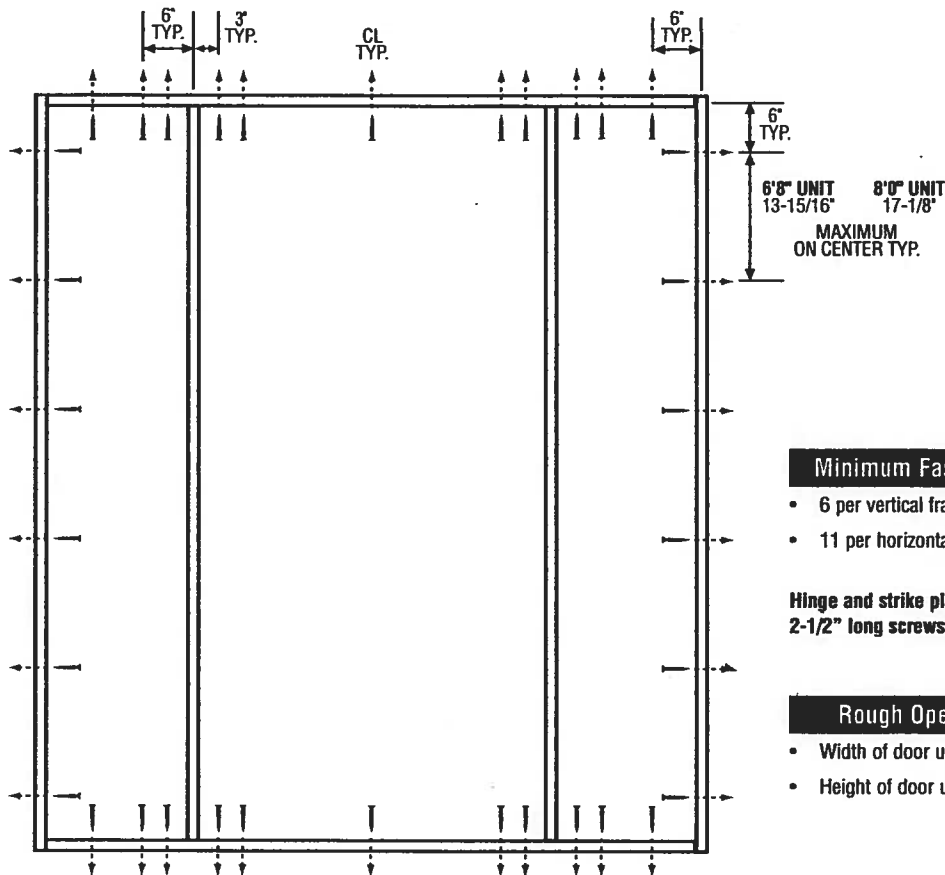
- Compliance requires that GRADE 3 or better (ANSI/BHMA A156.2) cylindrical and deadlock hardware be installed.
- **UNITS COVERED BY COP DOCUMENT 3146, 3166, 3241*, 3246, 3261* or 3266**
Compliance requires that 8" GRADE 1 (ANSI/BHMA A156.16) surface bolts be installed on latch side of active door panel – (1) at top and (1) at bottom.

*Based on required Design Pressure – see COP sheet for details.

Notes:

1. Anchor calculations have been carried out with the lowest (least) fastener rating from the different fasteners being considered for use. Fasteners analyzed for this unit include #8 and #10 wood screws or 3/16" Tapcons.
2. The wood screw single shear design values come from Table 11.3A of ANSI/AF & PA NDS for southern pine lumber with a side member thickness of 1-1/4" and achievement of minimum embedment. The 3/16" Tapcon single shear design values come from the ITW and ELCO Dade Country approvals respectively, each with minimum 1-1/4" embedment.
3. Wood bucks by others, must be anchored properly to transfer loads to the structure.

SINGLE DOOR WITH 2 SIDELITES



Minimum Fastener Count

- 6 per vertical framing member
- 11 per horizontal framing member

Hinge and strike plates require two 2-1/2" long screws per location.

Rough Opening (RO)

- Width of door unit plus 1/2"
- Height of door unit plus 1/4"

Warrick Hersey Test Data Review Certificate #3026447A: #3026447B; #3026447C and COP/Test Report Validation Matrix #3026447A-001, 002, 003; #3026447B-001, 002, 003; #3026447C-001, 002, 003 provides additional information - available from the ITS/WH website (www.itswh.com), the Masonite website (www.masonite.com) or the Masonite technical center.

Latching Hardware:

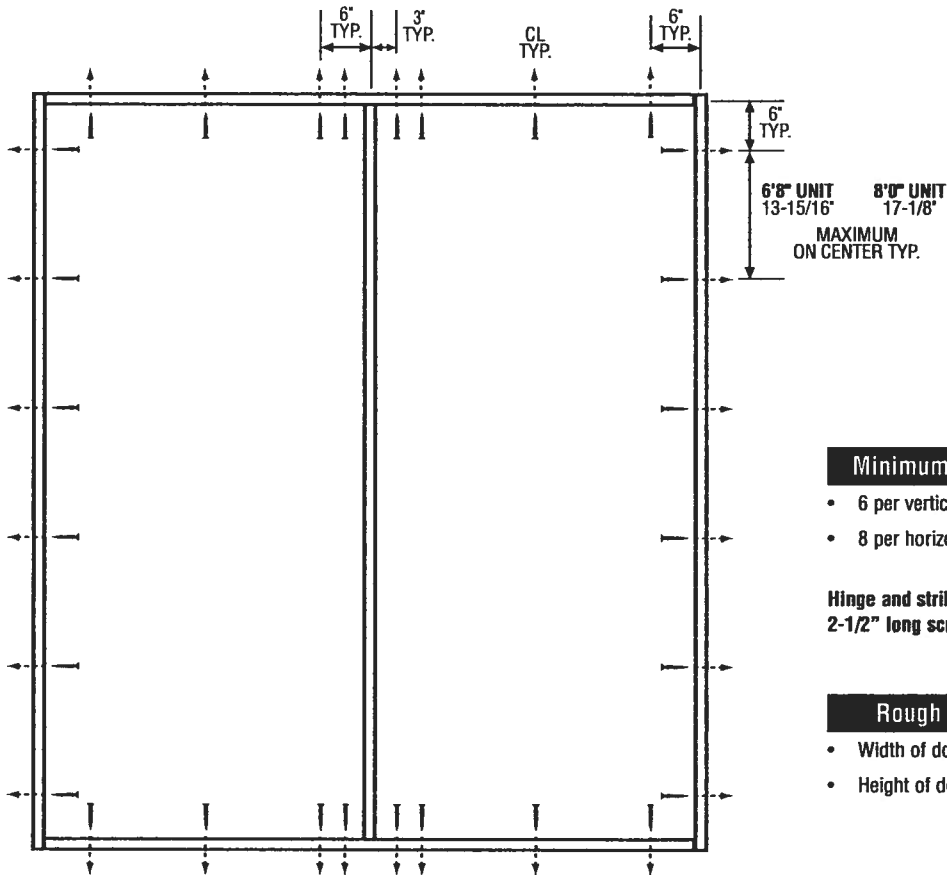
- Compliance requires that GRADE 3 or better (ANSI/BHMA A156.2) cylindrical and deadlock hardware be installed.
- **UNITS COVERED BY COP DOCUMENT 3244*, 3249, 3264* or 3269**
Compliance requires that 8" GRADE 1 (ANSI/BHMA A156.16) surface bolts be installed on latch side of active door panel - (1) at top and (1) at bottom.

*Based on required Design Pressure - see COP sheet for details.

Notes:

1. Anchor calculations have been carried out with the lowest (least) fastener rating from the different fasteners being considered for use. Fasteners analyzed for this unit include #8 and #10 wood screws or 3/16" Tapcons.
2. The wood screw single shear design values come from Table 11.3A of ANSI/AF & PA NDS for southern pine lumber with a side member thickness of 1-1/4" and achievement of minimum embedment. The 3/16" Tapcon single shear design values come from the ITW and ELCO Dade Country approvals respectively, each with minimum 1-1/4" embedment.
3. Wood bucks by others, must be anchored properly to transfer loads to the structure.

DOUBLE DOOR



Minimum Fastener Count

- 6 per vertical framing member
- 8 per horizontal framing member

Hinge and strike plates require two 2-1/2" long screws per location.

Rough Opening (RO)

- Width of door unit plus 1/2"
- Height of door unit plus 1/4"

Warnock Hersey Test Data Review Certificate #3026447A, #3026447B, #3026447C and COP/Test Report Validation Matrix #3026447A-001, 002, 003; #3026447B-001, 002, 003; #3026447C-001, 002, 003 provides additional information - available from the ITS/WH website (www.etsemko.com), the Masonite website (www.masonite.com) or the Masonite technical center.

Latching Hardware:

- Compliance requires that GRADE 3 or better (ANSI/BHMA A156.2) cylindrical and deadlock hardware be installed.
- **UNITS COVERED BY COP DOCUMENT 3147, 3167, 3242*, 3247, 3262* or 3267**
Compliance requires that 8" GRADE 1 (ANSI/BHMA A156.16) surface bolts be installed on latch side of active door panel - (1) at top and (1) at bottom.

*Based on required Design Pressure - see COP sheet for details.

Notes:

1. Anchor calculations have been carried out with the lowest (least) fastener rating from the different fasteners being considered for use. Fasteners analyzed for this unit include #8 and #10 wood screws or 3/16" Tapcons.
2. The wood screw single shear design values come from Table 11.3A of ANSI/AF & PA NDS for southern pine lumber with a side member thickness of 1-1/4" and achievement of minimum embedment. The 3/16" Tapcon single shear design values come from the ITW and ELCO Dade Country approvals respectively, each with minimum 1-1/4" embedment.
3. Wood bucks by others, must be anchored properly to transfer loads to the structure.

WOOD-EDGE STEEL DOORS

Opaque Units in Hollow-Metal Steel Frame

6'8" Height – Outswing

Arrangement	Singles (width)	Masonite International	Miami-Dade BCCO	DP Rating	Impact Rated
X	2'0"	COP-WL-JH4131-02	Not Listed	56.0	YES
	2'6"				
	2'8"				
	2'10"				
	3'0"				
	3'6"	Not Listed	Not Listed	—	—
Arrangement	Multiples (width)	Masonite International	Miami-Dade BCCO	DP Rating	Impact Rated
XO, OX, OXO	2'8" + 1'0"	Not Listed	Not Listed	—	—
	2'8" + 1'2"				
	2'10" + 1'0"				
	2'10" + 1'2"				
	3'0" + 1'0"				
	3'0" + 1'2"				
	1'0" + 2'8" + 1'0"				
	1'0" + 2'10" + 1'0"				
	1'2" + 2'8" + 1'2"				
	1'0" + 2'8" + 1'0"				
	1'0" + 3'0" + 1'0"				
	1'2" + 2'10" + 1'2"				
	1'2" + 3'0" + 1'2"				
	2'6" + 2'6" + 2'6"				
	2'8" + 2'8" + 2'8"				
	2'10" + 2'10" + 2'10"				
	3'0" + 3'0" + 3'0"				
XX, OXXO	2'6" + 2'6"	Not Listed	Not Listed	—	—
	2'8" + 2'8"				
	2'10" + 2'10"				
	3'0" + 3'0"				
	2'6" + 2'6" + 2'6" + 2'6"				
	2'8" + 2'8" + 2'8" + 2'8"				
	2'10" + 2'10" + 2'10" + 2'10"				
	3'0" + 3'0" + 3'0" + 3'0"				

Notes:

1. Door arrangements using fewer panels than what is shown in the above chart also comply under the product approvals shown.
2. Assembly details are available from the Masonite International website (www.masonite.com) or from the technical center.
3. Installation instructions are available from the Masonite International website (www.masonite.com) or from the technical center.
4. Actual design pressure requirement for a specific building design & geographic location is determined by ASCE 7 (Minimum design loads for buildings and other structures). National, state or local building codes specify the edition required.
5. Masonite International structural, cyclic, air, water, forced entry/or impact testing is done in accordance with Miami-Dade BCCO protocol PA201, PA202 & PA203.

WOOD-EDGE STEEL DOORS

Opaque Units in Hollow-Metal Steel Frame

6'8" Height – Inswing

Arrangement	Singles (width)	Masonite International	Miami-Dade BCCO	DP Rating	Impact Rated
X	2'0"	COP-WL-JH4111-02	Not Listed	56.0	YES
	2'6"				
	2'8"				
	2'10"				
	3'0"				
	3'6"	Not Listed	Not Listed	–	–
Arrangement	Multiples (width)	Masonite International	Miami-Dade BCCO	DP Rating	Impact Rated
XO, OX, OXO	2'8" + 1'0"	Not Listed	Not Listed	–	–
	2'8" + 1'2"				
	2'10" + 1'0"				
	2'10" + 1'2"				
	3'0" + 1'0"				
	3'0" + 1'2"				
	1'0" + 2'8" + 1'0"				
	1'0" + 2'10" + 1'0"				
	1'2" + 2'8" + 1'2"				
	1'0" + 2'8" + 1'0"				
	1'0" + 3'0" + 1'0"				
	1'2" + 2'10" + 1'2"				
	1'2" + 3'0" + 1'2"				
	2'6" + 2'6" + 2'6"				
	2'8" + 2'8" + 2'8"				
	2'10" + 2'10" + 2'10"				
	3'0" + 3'0" + 3'0"				
XX, OXXO	2'6" + 2'6"	Not Listed	Not Listed	–	–
	2'8" + 2'8"				
	2'10" + 2'10"				
	3'0" + 3'0"				
	2'6" + 2'6" + 2'6" + 2'6"				
	2'8" + 2'8" + 2'8" + 2'8"				
	2'10" + 2'10" + 2'10" + 2'10"				
	3'0" + 3'0" + 3'0" + 3'0"				

Notes:

1. Door arrangements using fewer panels than what is shown in the above chart also comply under the product approvals shown.
2. Assembly details are available from the Masonite International website (www.masonite.com) or from the technical center.
3. Installation instructions are available from the Masonite International website (www.masonite.com) or from the technical center.
4. Actual design pressure requirement for a specific building design & geographic location is determined by ASCE 7 (Minimum design loads for buildings and other structures). National, state or local building codes specify the edition required.
5. Masonite International structural, cyclic, air, water, forced entry/or impact testing is done in accordance with Miami-Dade BCCO protocol PA201, PA202 & PA203.

WOOD-EDGE STEEL DOORS

Opaque Units in 2-piece Adjustable Steel Frame

6'8" Height – Outswing

Arrangement	Singles (width)	Masonite International	Miami-Dade BCCO	DP Rating	Impact Rated
X	2'0"	COP-WL-JH4136-02	Not Listed	56.0	YES
	2'6"				
	2'8"				
	2'10"				
	3'0"				
	3'6"	Not Listed	Not Listed	—	—
Arrangement	Multiples (width)	Masonite International	Miami-Dade BCCO	DP Rating	Impact Rated
XO, OX, OXO	2'8" + 1'0"	Not Listed	Not Listed	—	—
	2'8" + 1'2"				
	2'10" + 1'0"				
	2'10" + 1'2"				
	3'0" + 1'0"				
	3'0" + 1'2"				
	1'0" + 2'8" + 1'0"				
	1'0" + 2'10" + 1'0"				
	1'2" + 2'8" + 1'2"				
	1'0" + 2'8" + 1'0"				
	1'0" + 3'0" + 1'0"				
	1'2" + 2'10" + 1'2"				
	1'2" + 3'0" + 1'2"				
	2'6" + 2'6" + 2'6"				
	2'8" + 2'8" + 2'8"				
	2'10" + 2'10" + 2'10"				
	3'0" + 3'0" + 3'0"				
XX, OXXO	2'6" + 2'6"	Not Listed	Not Listed	—	—
	2'8" + 2'8"				
	2'10" + 2'10"				
	3'0" + 3'0"				
	2'6" + 2'6" + 2'6" + 2'6"				
	2'8" + 2'8" + 2'8" + 2'8"				
	2'10" + 2'10" + 2'10" + 2'10"				
	3'0" + 3'0" + 3'0" + 3'0"				

Notes:

1. Door arrangements using fewer panels than what is shown in the above chart also comply under the product approvals shown.
2. Assembly details are available from the Masonite International website (www.masonite.com) or from the technical center.
3. Installation instructions are available from the Masonite International website (www.masonite.com) or from the technical center.
4. Actual design pressure requirement for a specific building design & geographic location is determined by ASCE 7 (Minimum design loads for buildings and other structures). National, state or local building codes specify the edition required.
5. Masonite International structural, cyclic, air, water, forced entry/or impact testing is done in accordance with Miami-Dade BCCO protocol PA201, PA202 & PA203.

WOOD-EDGE STEEL DOORS

Opaque Units in 2-piece Adjustable Steel Frame

6'8" Height – Inswing

Arrangement	Singles (width)	Masonite International	Miami-Dade BCCO	DP Rating	Impact Rated
X	2'0"	COP-WL-JH4116-02	Not Listed	56.0	YES
	2'6"				
	2'8"				
	2'10"				
	3'0"				
	3'6"	Not Listed	Not Listed	—	—
Arrangement	Multiples (width)	Masonite International	Miami-Dade BCCO	DP Rating	Impact Rated
XO, OX, OXO	2'8" + 1'0"	Not Listed	Not Listed	—	—
	2'8" + 1'2"				
	2'10" + 1'0"				
	2'10" + 1'2"				
	3'0" + 1'0"				
	3'0" + 1'2"				
	1'0" + 2'8" + 1'0"				
	1'0" + 2'10" + 1'0"				
	1'2" + 2'8" + 1'2"				
	1'0" + 2'8" + 1'0"				
	1'0" + 3'0" + 1'0"				
	1'2" + 2'10" + 1'2"				
	1'2" + 3'0" + 1'2"				
	2'6" + 2'6" + 2'6"				
	2'8" + 2'8" + 2'8"				
	2'10" + 2'10" + 2'10"				
XX, OXXO	3'0" + 3'0" + 3'0"	Not Listed	Not Listed	—	—
	2'6" + 2'6"				
	2'8" + 2'8"				
	2'10" + 2'10"				
	3'0" + 3'0"				
	2'6" + 2'6" + 2'6" + 2'6"				
	2'8" + 2'8" + 2'8" + 2'8"				
	2'10" + 2'10" + 2'10" + 2'10"				
	3'0" + 3'0" + 3'0" + 3'0"				

Notes:

1. Door arrangements using fewer panels than what is shown in the above chart also comply under the product approvals shown.
2. Assembly details are available from the Masonite International website (www.masonite.com) or from the technical center.
3. Installation instructions are available from the Masonite International website (www.masonite.com) or from the technical center.
4. Actual design pressure requirement for a specific building design & geographic location is determined by ASCE 7 (Minimum design loads for buildings and other structures). National, state or local building codes specify the edition required.
5. Masonite International structural, cyclic, air, water, forced entry/or impact testing is done in accordance with Miami-Dade BCCO protocol PA201, PA202 & PA203.



WOOD-EDGE STEEL DOORS

Opaque Units

6'8" Height – Outswing

Arrangement	Singles (width)	Masonite International	Miami-Dade BCCO	DP Rating	Impact Rated
X	2'0"	COP-WL-JH4121-02	99-1008.08	66.0	YES
	2'6"				
	2'8"				
	2'10"				
	3'0"				
	3'6"	Not Listed	Not Listed	—	—
Arrangement	Multiples (width)	Masonite International	Miami-Dade BCCO	DP Rating	Impact Rated
XO, OX, OXO	2'8" + 1'0"	COP-WL-JH4123-02	Not Listed	57.0	YES
	2'8" + 1'2"				
	2'10" + 1'0"				
	2'10" + 1'2"				
	3'0" + 1'0"				
	3'0" + 1'2"				
	1'0" + 2'8" + 1'0"	COP-WL-JH4124-02	Not Listed	57.0	YES
	1'0" + 2'10" + 1'0"				
	1'2" + 2'8" + 1'2"				
	1'0" + 2'8" + 1'0"				
	1'0" + 3'0" + 1'0"				
	1'2" + 2'10" + 1'2"				
	1'2" + 3'0" + 1'2"	COP-WL-JH4124-02	Not Listed	45.0	YES
	2'6" + 2'6" + 2'6"				
	2'8" + 2'8" + 2'8"				
	2'10" + 2'10" + 2'10"				
	3'0" + 3'0" + 3'0"				
XX, OXXO	2'6" + 2'6"	COP-WL-JH4122-02	Not Listed	45.0	YES
	2'8" + 2'8"				
	2'10" + 2'10"				
	3'0" + 3'0"				
	2'6" + 2'6" + 2'6" + 2'6"	COP-WL-JH4125-02	Not Listed	45.0	YES
	2'8" + 2'8" + 2'8" + 2'8"				
	2'10" + 2'10" + 2'10" + 2'10"				
	3'0" + 3'0" + 3'0" + 3'0"				

Notes:

- Door arrangements using fewer panels than what is shown in the above chart also comply under the product approvals shown.
- Assembly details are available from the Masonite International website (www.masonite.com) or from the technical center.
- Installation instructions are available from the Masonite International website (www.masonite.com) or from the technical center.
- Actual design pressure requirement for a specific building design & geographic location is determined by ASCE 7 (Minimum design loads for buildings and other structures). National, state or local building codes specify the edition required.
- Masonite International structural, cyclic, air, water, forced entry/or impact testing is done in accordance with Miami-Dade BCCO protocol PA201, PA202 & PA203.



Test Data Review Certificate
#3026447A and COP/Test
Report Validation Matrix
#3026447A-001 provides
additional information
available from the ITS/WH
website (www.itswh.com),
the Masonite website
(www.masonite.com) or the
Masonite technical center.

Johnson
EntrySystems

June 17, 2002
Our continuing program of product improvement makes specifications, design and product
detail subject to change without notice.



Exclusively from
Masonite

Masonite International Corporation

WOOD-EDGE STEEL DOORS

Opaque Units

6'8" Height – Inswing

Arrangement	Singles (width)	Masonite International	Miami-Dade BCCO	DP Rating	Impact Rated
X	2'0"	COP-WL-JH4101-02	99-1008.09	66.0	YES
	2'6"				
	2'8"				
	2'10"				
	3'0"				
	3'6"	Not Listed	Not Listed	—	—
Arrangement	Multiples (width)	Masonite International	Miami-Dade BCCO	DP Rating	Impact Rated
XO, OX, OXO	2'8" + 1'0"	COP-WL-JH4103-02	Not Listed	57.0	YES
	2'8" + 1'2"				
	2'10" + 1'0"				
	2'10" + 1'2"				
	3'0" + 1'0"				
	3'0" + 1'2"				
	1'0" + 2'8" + 1'0"	COP-WL-JH4104-02	Not Listed	57.0	YES
	1'0" + 2'10" + 1'0"				
	1'2" + 2'8" + 1'2"				
	1'0" + 2'8" + 1'0"				
	1'0" + 3'0" + 1'0"				
	1'2" + 2'10" + 1'2"				
	1'2" + 3'0" + 1'2"	COP-WL-JH4104-02	Not Listed	45.0	YES
	2'6" + 2'6" + 2'6"				
	2'8" + 2'8" + 2'8"				
	2'10" + 2'10" + 2'10"				
	3'0" + 3'0" + 3'0"				
XX, OXXO	2'6" + 2'6"	COP-WL-JH4102-02	Not Listed	45.0	YES
	2'8" + 2'8"				
	2'10" + 2'10"				
	3'0" + 3'0"				
	2'6" + 2'6" + 2'6" + 2'6"	COP-WL-JH4105-02	Not Listed	45.0	YES
	2'8" + 2'8" + 2'8" + 2'8"				
	2'10" + 2'10" + 2'10" + 2'10"				
	3'0" + 3'0" + 3'0" + 3'0"				

Notes:

1. Door arrangements using fewer panels than what is shown in the above chart also comply under the product approvals shown.
2. Assembly details are available from the Masonite International website (www.masonite.com) or from the technical center.
3. Installation instructions are available from the Masonite International website (www.masonite.com) or from the technical center.
4. Actual design pressure requirement for a specific building design & geographic location is determined by ASCE 7 (Minimum design loads for buildings and other structures). National, state or local building codes specify the edition required.
5. Masonite International structural, cyclic, air, water, forced entry/or impact testing is done in accordance with Miami-Dade BCCO protocol PA201, PA202 & PA203.



Test Data Review Certificate
#3026447A and COP/Test
Report Validation Matrix
#3026447A-001 provides
additional information -
available from the ITS/WH
website (www.itsmko.com),
the Masonite website
(www.masonite.com) or the
Masonite technical center.

Johnson
EntrySystems

June 17, 2002
Our continuing program of product improvement makes specifications, design and product detail subject to change without notice.



Exclusively from

Masonite
Masonite International Corporation

WOOD-EDGE STEEL DOORS

Glazed Units

6'8" Height – Outswing

Arrangement	Singles (width)	Masonite International	Miami-Dade BCCO	DP Rating	Impact Rated
X	2'0"	COP-WL-JH4161-02	Not Listed	40.5	NO
	2'6"				
	2'8"				
	2'10"				
	3'0"				
	3'6"	Not Listed	Not Listed	—	—
Arrangement	Multiples (width)	Masonite International	Miami-Dade BCCO	DP Rating	Impact Rated
XO, OX, OXO	2'8" + 1'0"	COP-WL-JH4163-02	Not Listed	40.5	NO
	2'8" + 1'2"				
	2'10" + 1'0"				
	2'10" + 1'2"				
	3'0" + 1'0"				
	3'0" + 1'2"				
	1'0" + 2'8" + 1'0"	COP-WL-JH4164-02	Not Listed	40.5	NO
	1'0" + 2'10" + 1'0"				
	1'2" + 2'8" + 1'2"				
	1'0" + 2'8" + 1'0"				
	1'0" + 3'0" + 1'0"				
	1'2" + 2'10" + 1'2"				
	1'2" + 3'0" + 1'2"				
	2'6" + 2'6" + 2'6"				
	2'8" + 2'8" + 2'8"				
	2'10" + 2'10" + 2'10"				
	3'0" + 3'0" + 3'0"				
XX, OXXO	2'6" + 2'6"	COP-WL-JH4162-02	Not Listed	40.5	NO
	2'8" + 2'8"				
	2'10" + 2'10"				
	3'0" + 3'0"				
	2'6" + 2'6" + 2'6" + 2'6"	COP-WL-JH4165-02	Not Listed	40.5	NO
	2'8" + 2'8" + 2'8" + 2'8"				
	2'10" + 2'10" + 2'10" + 2'10"				
	3'0" + 3'0" + 3'0" + 3'0"				

Notes:

- Door arrangements using fewer panels than what is shown in the above chart also comply under the product approvals shown.
- Assembly details are available from the Masonite International website (www.masonite.com) or from the technical center.
- Installation instructions are available from the Masonite International website (www.masonite.com) or from the technical center.
- Actual design pressure requirement for a specific building design & geographic location is determined by ASCE 7 (Minimum design loads for buildings and other structures). National, state or local building codes specify the edition required.
- Masonite International structural, cyclic, air, water, forced entry/or impact testing is done in accordance with Miami-Dade BCCO protocol PA201, PA202 & PA203.



Test Data Review Certificate
#3026447A and COP/Test
Report Validation Matrix
#3026447A-001 provides
additional information -
available from the ITSAWH
website (www.itsawh.com),
the Masonite website
(www.masonite.com) or the
Masonite technical center.

Johnson
EntrySystems

June 17, 2002
Our continuing program of product improvement makes specifications, design and product
detail subject to change without notice.



Exclusively from
Masonite
Masonite International Corporation

WOOD-EDGE STEEL DOORS

Glazed Units

6'8" Height – Inswing

Arrangement	Singles (width)	Masonite International	Miami-Dade BCCO	DP Rating	Impact Rated
X	2'0"	COP-WL-JH4141-02	Not Listed	40.5	NO
	2'6"				
	2'8"				
	2'10"				
	3'0"				
	3'6"	Not Listed	Not Listed	—	—
Arrangement	Multiples (width)	Masonite International	Miami-Dade BCCO	DP Rating	Impact Rated
XO, OX, OXO	2'8" + 1'0"	COP-WL-JH4143-02	Not Listed	40.5	NO
	2'8" + 1'2"				
	2'10" + 1'0"				
	2'10" + 1'2"				
	3'0" + 1'0"				
	3'0" + 1'2"				
	1'0" + 2'8" + 1'0"	COP-WL-JH4144-02	Not Listed	40.5	NO
	1'0" + 2'10" + 1'0"				
	1'2" + 2'8" + 1'2"				
	1'0" + 2'8" + 1'0"				
	1'0" + 3'0" + 1'0"				
	1'2" + 2'10" + 1'2"				
	1'2" + 3'0" + 1'2"				
	2'6" + 2'6" + 2'6"				
	2'8" + 2'8" + 2'8"				
	2'10" + 2'10" + 2'10"				
	3'0" + 3'0" + 3'0"				
XX, OXXO	2'6" + 2'6"	COP-WL-JH4142-02	Not Listed	40.5	NO
	2'8" + 2'8"				
	2'10" + 2'10"				
	3'0" + 3'0"				
	2'6" + 2'6" + 2'6" + 2'6"	COP-WL-JH4145-02	Not Listed	40.5	NO
	2'8" + 2'8" + 2'8" + 2'8"				
	2'10" + 2'10" + 2'10" + 2'10"				
	3'0" + 3'0" + 3'0" + 3'0"				

Notes:

- Door arrangements using fewer panels than what is shown in the above chart also comply under the product approvals shown.
- Assembly details are available from the Masonite International website (www.masonite.com) or from the technical center.
- Installation instructions are available from the Masonite International website (www.masonite.com) or from the technical center.
- Actual design pressure requirement for a specific building design & geographic location is determined by ASCE 7 (Minimum design loads for buildings and other structures). National, state or local building codes specify the edition required.
- Masonite International structural, cyclic, air, water, forced entry/or impact testing is done in accordance with Miami-Dade BCCO protocol PA201, PA202 & PA203.



Test Data Review Certificate
#3026447A and COP/Test
Report Validation Matrix
#3026447A-001 provides
additional information -
available from the ITS/WH
website (www.etsmko.com),
the Masonite website
(www.masonite.com) or the
Masonite technical center.

1

Johnson
EntrySystems

June 17, 2002
Our continuing program of product improvement makes specifications, design and product detail subject to change without notice.



Exclusively from
Masonite
Masonite International Corporation

FIBERGLASS DOORS

Opaque Units

8'0" Height – Outswing

Arrangement	Singles (width)	Masonite International	Miami-Dade BCCO	DP Rating	Impact Rated
X	2'0"	COP-WL-MA0126-02	02-0109.07 (Application Filed)	70.0	NO
	2'6"				
	2'8"				
	2'10"				
	3'0"				
	3'6"	Not Listed	Not Listed	—	—
Arrangement	Multiples (width)	Masonite International	Miami-Dade BCCO	DP Rating	Impact Rated
XO, OX, OXO	2'8" + 1'0"	COP-WL-MA0128-02	02-0109.07 (Application Filed)	55.0	NO
	2'8" + 1'2"				
	2'10" + 1'0"				
	2'10" + 1'2"				
	3'0" + 1'0"				
	3'0" + 1'2"				
	1'0" + 2'8" + 1'0"	COP-WL-MA0129-02	02-0109.07 (Application Filed)	55.0	NO
	1'0" + 2'10" + 1'0"				
	1'2" + 2'8" + 1'2"				
	1'0" + 2'8" + 1'0"				
	1'0" + 3'0" + 1'0"				
	1'2" + 2'10" + 1'2"				
	1'2" + 3'0" + 1'2"				
	2'6" + 2'6" + 2'6"				
	2'8" + 2'8" + 2'8"	Not Listed	Not Listed	—	—
	2'10" + 2'10" + 2'10"				
	3'0" + 3'0" + 3'0"				
	2'6" + 2'6"				
XX, OXXO	2'8" + 2'8"	COP-WL-MA0127-02	02-0109.07 (Application Filed)	55.0	NO
	2'10" + 2'10"				
	3'0" + 3'0"				
	1'2" + 2'6" + 2'6" + 1'2"				
	1'2" + 2'8" + 2'8" + 1'2"	COP-WL-MA0130-02	02-0109.07 (Application Filed)	55.0	NO
	1'2" + 2'10" + 2'10" + 1'2"				
	1'2" + 3'0" + 3'0" + 1'2"				
	1'2" + 3'0" + 3'0" + 1'2"				

Notes:

- Door arrangements using fewer panels than what is shown in the above chart also comply under the product approvals shown.
- Assembly details are available from the Masonite International website (www.masonite.com) or from the technical center.
- Installation instructions are available from the Masonite International website (www.masonite.com) or from the technical center.
- Actual design pressure requirement for a specific building design & geographic location is determined by ASCE 7 (Minimum design loads for buildings and other structures). National, state or local building codes specify the edition required.
- Masonite International structural, cyclic, air, water, forced entry/or impact testing is done in accordance with Miami-Dade BCCO protocol PA201, PA202 & PA203.



Test Data Review Certificate
#3026447A, #3026447B,
#3026447C and COP/Test Report
Validation Matrix #3026447A-001,
002, 003, #3026447B-001, 002,
003, #3026447C-001, 002, 003
provides additional information -
available from the ITS/WH
website (www.itswh.com), the
Masonite website
(www.masonite.com) or the
Masonite technical center.

Oakcraft
Wood-Grain  Textured
FIBERGLASS ENTRY DOORS

ARTEK
Non-Textured Fiberglass Entry Doors



Exclusively from
Masonite
Masonite International Corporation

FIBERGLASS DOORS

Opaque Units

8'0" Height – Inswing

Arrangement	Singles (width)	Masonite International	Miami-Dade BCCO	DP Rating	Impact Rated
X	2'0"	COP-WL-MA0106-02	02-0109.08 (Application Filed)	70.0	NO
	2'6"				
	2'8"				
	2'10"				
	3'0"				
	3'6"	Not Listed	Not Listed	—	—
Arrangement	Multiples (width)	Masonite International	Miami-Dade BCCO	DP Rating	Impact Rated
XO, OX, OXO	2'8" + 1'0"	COP-WL-MA0108-02	02-0109.08 (Application Filed)	55.0	NO
	2'8" + 1'2"				
	2'10" + 1'0"				
	2'10" + 1'2"				
	3'0" + 1'0"				
	3'0" + 1'2"				
	1'0" + 2'8" + 1'0"	COP-WL-MA0109-02	02-0109.08 (Application Filed)	55.0	NO
	1'0" + 2'10" + 1'0"				
	1'2" + 2'8" + 1'2"				
	1'0" + 2'8" + 1'0"				
	1'0" + 3'0" + 1'0"				
	1'2" + 2'10" + 1'2"				
	1'2" + 3'0" + 1'2"	Not Listed	Not Listed	—	—
	2'6" + 2'6" + 2'6"				
	2'8" + 2'8" + 2'8"				
	2'10" + 2'10" + 2'10"				
	3'0" + 3'0" + 3'0"				
XX, OXXO	2'6" + 2'6"	COP-WL-MA0107-02	02-0109.08 (Application Filed)	55.0	NO
	2'8" + 2'8"				
	2'10" + 2'10"				
	3'0" + 3'0"				
	1'2" + 2'6" + 2'6" + 1'2"	COP-WL-MA0110-02	02-0109.08 (Application Filed)	55.0	NO
	1'2" + 2'8" + 2'8" + 1'2"				
	1'2" + 2'10" + 2'10" + 1'2"				
	1'2" + 3'0" + 3'0" + 1'2"				

Notes:

- Door arrangements using fewer panels than what is shown in the above chart also comply under the product approvals shown.
- Assembly details are available from the Masonite International website (www.masonite.com) or from the technical center.
- Installation instructions are available from the Masonite International website (www.masonite.com) or from the technical center.
- Actual design pressure requirement for a specific building design & geographic location is determined by ASCE 7 (Minimum design loads for buildings and other structures). National, state or local building codes specify the edition required.
- Masonite International structural, cyclic, air, water, forced entry/or impact testing is done in accordance with Miami-Dade BCCO protocol PA201, PA202 & PA203.



Test Data Review Certificate
#3026447A, #3026447B,
#3026447C and COP/Test Report
Validation Matrix #3026447A-001,
002, 003, #3026447B-001, 002,
003, #3026447C-001, 002, 003
provides additional information -
available from the ITS/WH
website (www.etsmko.com), the
Masonite website
(www.masonite.com) or the
Masonite technical center.

7

Oakcraft™
Wood-grain **ART** Textured
FIBERGLASS ENTRY DOORS

ARTEK™
Non-Textured Fiberglass Entry Doors



Exclusively from
Masonite®
Masonite International Corporation

June 17, 2002
Our continuing program of product improvement makes specifications, design and product detail subject to change without notice.

FIBERGLASS DOORS

Opaque Units

6'8" Height – Outswing

Arrangement	Singles (width)	Masonite International	Miami-Dade BCCO	DP Rating	Impact Rated
X	2'0"	COP-WL-MA0121-02	01-1031.02	76.0	NO
	2'6"				
	2'8"				
	2'10"				
	3'0"				
	3'6"	Not Listed	Not Listed	—	—
Arrangement	Multiples (width)	Masonite International	Miami-Dade BCCO	DP Rating	Impact Rated
XO, OX, OXO	2'8" + 1'0"	COP-WL-MA0123-02	02-0109.09 (Application Filed)	55.0	NO
	2'8" + 1'2"				
	2'10" + 1'0"				
	2'10" + 1'2"				
	3'0" + 1'0"				
	3'0" + 1'2"				
	1'0" + 2'8" + 1'0"	COP-WL-MA0124-02	02-0109.09 (Application Filed)	55.0	NO
	1'0" + 2'10" + 1'0"				
	1'2" + 2'8" + 1'2"				
	1'0" + 2'8" + 1'0"				
	1'0" + 3'0" + 1'0"				
	1'2" + 2'10" + 1'2"				
	1'2" + 3'0" + 1'2"	Not Listed	Not Listed	—	—
	2'6" + 2'6" + 2'6"				
	2'8" + 2'8" + 2'8"				
	2'10" + 2'10" + 2'10"				
	3'0" + 3'0" + 3'0"				
XX, OXXO	2'6" + 2'6"	COP-WL-MA0122-02	02-0109.09 (Application Filed)	55.0	NO
	2'8" + 2'8"				
	2'10" + 2'10"				
	3'0" + 3'0"				
	1'2" + 2'6" + 2'6" + 1'2"	COP-WL-MA0125-02	02-0109.09 (Application Filed)	55.0	NO
	1'2" + 2'8" + 2'8" + 1'2"				
	1'2" + 2'10" + 2'10" + 1'2"				
	1'2" + 3'0" + 3'0" + 1'2"				

Notes:

- Door arrangements using fewer panels than what is shown in the above chart also comply under the product approvals shown.
- Assembly details are available from the Masonite International website (www.masonite.com) or from the technical center.
- Installation instructions are available from the Masonite International website (www.masonite.com) or from the technical center.
- Actual design pressure requirement for a specific building design & geographic location is determined by ASCE 7 (Minimum design loads for buildings and other structures). National, state or local building codes specify the edition required.
- Masonite International structural, cyclic, air, water, forced entry/or impact testing is done in accordance with Miami-Dade BCCO protocol PA201, PA202 & PA203.



Test Data Review Certificate
#3026447A; #3026447B,
#3026447C and COP/Test Report
Validation Matrix #3026447A-001,
002, 003; #3026447B-001, 002,
003; #3026447C-001, 002, 003
provides additional information -
available from the ITS/WH
website (www.itswh.com), the
Masonite website
(www.masonite.com) or the
Masonite technical center.

Oakcraft
Wood-Grain  Textured
FIBERGLASS ENTRY DOORS

ARTEK
Non-Textured Fiberglass Entry Doors

PREMDOR Collection
Premium Quality Doors

Exclusively from
Masonite
Masonite International Corporation

FIBERGLASS DOORS

Opaque Units

6'8" Height – Inswing

Arrangement	Singles (width)	Masonite International	Miami-Dade BCCO	DP Rating	Impact Rated
X	2'0"	COP-WL-MA0101-02	01-1031.01	76.0	NO
	2'6"				
	2'8"				
	2'10"				
	3'0"				
	3'6"	Not Listed	Not Listed	—	—
Arrangement	Multiples (width)	Masonite International	Miami-Dade BCCO	DP Rating	Impact Rated
XO, OX, OXO	2'8" + 1'0"	COP-WL-MA0103-02	02-0109.10 (Application Filed)	55.0	NO
	2'8" + 1'2"				
	2'10" + 1'0"				
	2'10" + 1'2"				
	3'0" + 1'0"				
	3'0" + 1'2"				
	1'0" + 2'8" + 1'0"	COP-WL-MA0104-02	02-0109.10 (Application Filed)	55.0	NO
	1'0" + 2'10" + 1'0"				
	1'2" + 2'8" + 1'2"				
	1'0" + 2'8" + 1'0"				
	1'0" + 3'0" + 1'0"				
	1'2" + 2'10" + 1'2"				
	1'2" + 3'0" + 1'2"	Not Listed	Not Listed	—	—
	2'6" + 2'6" + 2'6"				
	2'8" + 2'8" + 2'8"				
	2'10" + 2'10" + 2'10"				
	3'0" + 3'0" + 3'0"				
XX, OXXO	2'6" + 2'6"	COP-WL-MA0102-02	02-0109.10 (Application Filed)	55.0	NO
	2'8" + 2'8"				
	2'10" + 2'10"				
	3'0" + 3'0"				
	1'2" + 2'6" + 2'6" + 1'2"	COP-WL-MA0105-02	02-0109.10 (Application Filed)	55.0	NO
	1'2" + 2'8" + 2'8" + 1'2"				
	1'2" + 2'10" + 2'10" + 1'2"				
	1'2" + 3'0" + 3'0" + 1'2"				

Notes:

- Door arrangements using fewer panels than what is shown in the above chart also comply under the product approvals shown.
- Assembly details are available from the Masonite International website (www.masonite.com) or from the technical center.
- Installation instructions are available from the Masonite International website (www.masonite.com) or from the technical center.
- Actual design pressure requirement for a specific building design & geographic location is determined by ASCE 7 (Minimum design loads for buildings and other structures). National, state or local building codes specify the edition required.
- Masonite International structural, cyclic, air, water, forced entry/or impact testing is done in accordance with Miami-Dade BCCO protocol PA201, PA202 & PA203.



Test Data Review Certificate
#3026447A; #3026447B,
#3026447C and COP/Test Report
Validation Matrix #3026447A-001,
002, 003; #3026447B-001, 002,
003; #3026447C-001, 002, 003
provides additional information -
available from the ITS/WH
website (www.etsmko.com), the
Masonite website
(www.masonite.com) or the
Masonite technical center.

Oakcraft
Wood-grain and Textured
FIBERGLASS ENTRY DOORS

ARTEK
Non-Textured Fiberglass Entry Doors

PREMIER Collection
Premium Quality Doors

Exclusively from
Masonite
Masonite International Corporation

FIBERGLASS DOORS

Glazed Units

8'0" Height – Outswing

Arrangement	Singles (width)	Masonite International	Miami-Dade BCCO	DP Rating	Impact Rated
X	2'0"	COP-WL-MA0166-02	02-0423.03 (Application Filed)	47.0	NO
	2'6"				
	2'8"				
	2'10"				
	3'0"				
	3'6"	Not Listed	Not Listed	—	—
Arrangement	Multiples (width)	Masonite International	Miami-Dade BCCO	DP Rating	Impact Rated
XO, OX, OXO	2'8" + 1'0"	COP-WL-MA0168-02	02-0423.03 (Application Filed)	47.0	NO
	2'8" + 1'2"				
	2'10" + 1'0"				
	2'10" + 1'2"				
	3'0" + 1'0"				
	3'0" + 1'2"				
	1'0" + 2'8" + 1'0"	COP-WL-MA0169-02	02-0423.03 (Application Filed)	47.0	NO
	1'0" + 2'10" + 1'0"				
	1'2" + 2'8" + 1'2"				
	1'0" + 2'8" + 1'0"				
	1'0" + 3'0" + 1'0"				
	1'2" + 2'10" + 1'2"				
	1'2" + 3'0" + 1'2"				
	2'6" + 2'6" + 2'6"				
	2'8" + 2'8" + 2'8"				
	2'10" + 2'10" + 2'10"				
	3'0" + 3'0" + 3'0"				
XX, OXXO	2'6" + 2'6"	COP-WL-MA0167-02	02-0423.03 (Application Filed)	47.0	NO
	2'8" + 2'8"				
	2'10" + 2'10"				
	3'0" + 3'0"				
	2'6" + 2'6" + 2'6" + 2'6"	COP-WL-MA0170-02	02-0423.03 (Application Filed)	47.0	NO
	2'8" + 2'8" + 2'8" + 2'8"				
	2'10" + 2'10" + 2'10" + 2'10"				
	3'0" + 3'0" + 3'0" + 3'0"				

Notes:

- Door arrangements using fewer panels than what is shown in the above chart also comply under the product approvals shown.
- Assembly details are available from the Masonite International website (www.masonite.com) or from the technical center.
- Installation instructions are available from the Masonite International website (www.masonite.com) or from the technical center.
- Actual design pressure requirement for a specific building design & geographic location is determined by ASCE 7 (Minimum design loads for buildings and other structures). National, state or local building codes specify the edition required.
- Masonite International structural, cyclic, air, water, forced entry/or impact testing is done in accordance with Miami-Dade BCCO protocol PA201, PA202 & PA203.



Test Data Review Certificate
#3026447A, #3026447B,
#3026447C and COP/Test Report
Validation Matrix #3026447A-001,
002, 003; #3026447B-001, 002,
003; #3026447C-001, 002, 003
provides additional information -
available from the ITS/WH
website (www.etsmko.com), the
Masonite website
(www.masonite.com) or the
Masonite technical center.

Oakcraft
Wood-grain and Textured
FIBERGLASS ENTRY DOORS

ARTEK
Non-Textured Fiberglass Entry Doors



Exclusively from
Masonite
Masonite International Corporation

FIBERGLASS DOORS

Glazed Units

8'0" Height – Inswing

Arrangement	Singles (width)	Masonite International	Miami-Dade BCCO	DP Rating	Impact Rated
X	2'0"	COP-WL-MA0146-02	02-0423.01 (Application Filed)	40.0	NO
	2'6"				
	2'8"				
	2'10"				
	3'0"				
	3'6"	Not Listed	Not Listed	—	—
Arrangement	Multiples (width)	Masonite International	Miami-Dade BCCO	DP Rating	Impact Rated
XO, OX, OXO	2'8" + 1'0"	COP-WL-MA0148-02	02-0423.01 (Application Filed)	40.0	NO
	2'8" + 1'2"				
	2'10" + 1'0"				
	2'10" + 1'2"				
	3'0" + 1'0"				
	3'0" + 1'2"				
	1'0" + 2'8" + 1'0"	COP-WL-MA0149-02	02-0423.01 (Application Filed)	40.0	NO
	1'0" + 2'10" + 1'0"				
	1'2" + 2'8" + 1'2"				
	1'0" + 2'8" + 1'0"				
	1'0" + 3'0" + 1'0"				
	1'2" + 2'10" + 1'2"				
	1'2" + 3'0" + 1'2"				
	2'6" + 2'6" + 2'6"				
	2'8" + 2'8" + 2'8"				
	2'10" + 2'10" + 2'10"				
	3'0" + 3'0" + 3'0"				
XX, OXXO	2'6" + 2'6"	COP-WL-MA0147-02	02-0423.01 (Application Filed)	40.0	NO
	2'8" + 2'8"				
	2'10" + 2'10"				
	3'0" + 3'0"				
	2'6" + 2'6" + 2'6"	COP-WL-MA0150-02	02-0423.01 (Application Filed)	40.0	NO
	2'8" + 2'8" + 2'8"				
	2'10" + 2'10" + 2'10"				
	3'0" + 3'0" + 3'0" + 3'0"				

Notes:

- Door arrangements using fewer panels than what is shown in the above chart also comply under the product approvals shown.
- Assembly details are available from the Masonite International website (www.masonite.com) or from the technical center.
- Installation instructions are available from the Masonite International website (www.masonite.com) or from the technical center.
- Actual design pressure requirement for a specific building design & geographic location is determined by ASCE 7 (Minimum design loads for buildings and other structures). National, state or local building codes specify the edition required.
- Masonite International structural, cyclic, air, water, forced entry/or impact testing is done in accordance with Miami-Dade BCCO protocol PA201, PA202 & PA203.



Test Data Review Certificate
#3026447A; #3026447B;
#3026447C and COP/Test Report
Validation Matrix #3026447A-001, 002, 003; #3026447B-001, 002, 003; #3026447C-001, 002, 003 provides additional information - available from the ITS/WH website (www.etsenko.com), the Masonite website (www.masonite.com) or the Masonite technical center.

Oakcraft
Wood-grain and Textured
FIBERGLASS ENTRY DOORS

ARTEK
Non-Textured Fiberglass Entry Doors



Exclusively from
Masonite
Masonite International Corporation

FIBERGLASS DOORS

Glazed Units

6'8" Height – Outswing

Arrangement	Singles (width)	Masonite International	Miami-Dade BCCO	DP Rating	Impact Rated
X	2'0"	COP-WL-MA0161-02	02-0418.03 (Application Filed)	55.0	NO
	2'6"				
	2'8"				
	2'10"				
	3'0"				
	3'6"	Not Listed	Not Listed	—	—
Arrangement	Multiples (width)	Masonite International	Miami-Dade BCCO	DP Rating	Impact Rated
XO, OX, OXO	2'8" + 1'0"	COP-WL-MA0163-02	02-0418.03 (Application Filed)	55.0	NO
	2'8" + 1'2"				
	2'10" + 1'0"				
	2'10" + 1'2"				
	3'0" + 1'0"				
	3'0" + 1'2"				
	1'0" + 2'8" + 1'0"	COP-WL-MA0164-02	02-0418.03 (Application Filed)	55.0	NO
	1'0" + 2'10" + 1'0"				
	1'2" + 2'8" + 1'2"				
	1'0" + 2'8" + 1'0"				
	1'0" + 3'0" + 1'0"				
	1'2" + 2'10" + 1'2"				
	1'2" + 3'0" + 1'2"				
	2'6" + 2'6" + 2'6"				
	2'8" + 2'8" + 2'8"				
	2'10" + 2'10" + 2'10"				
	3'0" + 3'0" + 3'0"				
XX, OXXO	2'6" + 2'6"	COP-WL-MA0162-02	02-0418.03 (Application Filed)	55.0	NO
	2'8" + 2'8"				
	2'10" + 2'10"				
	3'0" + 3'0"				
	2'6" + 2'6" + 2'6" + 2'6"	COP-WL-MA0165-02	02-0418.03 (Application Filed)	55.0	NO
	2'8" + 2'8" + 2'8" + 2'8"				
	2'10" + 2'10" + 2'10" + 2'10"				
	3'0" + 3'0" + 3'0" + 3'0"				

Notes:

- Door arrangements using fewer panels than what is shown in the above chart also comply under the product approvals shown.
- Assembly details are available from the Masonite International website (www.masonite.com) or from the technical center.
- Installation instructions are available from the Masonite International website (www.masonite.com) or from the technical center.
- Actual design pressure requirement for a specific building design & geographic location is determined by ASCE 7 (Minimum design loads for buildings and other structures). National, state or local building codes specify the edition required.
- Masonite International structural, cyclic, air, water, forced entry/or impact testing is done in accordance with Miami-Dade BCCO protocol PA201, PA202 & PA203.

Warnock Hervey



Test Data Review Certificate
#3026447A, #3026447B;
#3026447C and COP/Test Report
Validation Matrix #3026447A-001,
002, 003; #3026447B-001, 002,
003; #3026447C-001, 002, 003
provides additional information -
available from the ITS/WH
website (www.etsmko.com), the
Masonite website
(www.masonite.com) or the
Masonite technical center.

Oakcraft
Wood-Grain **ART** Textured
FIBERGLASS ENTRY DOORS

ARTEK
Non-Textured Fiberglass Entry Doors

PREMIER Collection
Premium Quality Doors

Exclusively from
Masonite
Masonite International Corporation

June 17, 2002

Our continuing program of product improvement makes specifications, design and product detail subject to change without notice.

FIBERGLASS DOORS

Glazed Units

6'8" Height – Inswing

Arrangement	Singles (width)	Masonite International	Miami-Dade BCCO	DP Rating	Impact Rated
X	2'0"	COP-WL-MA0141-02	02-0419.08 (Application Filed)	52.0	NO
	2'6"				
	2'8"				
	2'10"				
	3'0"				
	3'6"	Not Listed	Not Listed	—	—
Arrangement	Multiples (width)	Masonite International	Miami-Dade BCCO	DP Rating	Impact Rated
XO, OX, OXO	2'8" + 1'0"	COP-WL-MA0143-02	02-0419.08 (Application Filed)	52.0	NO
	2'8" + 1'2"				
	2'10" + 1'0"				
	2'10" + 1'2"				
	3'0" + 1'0"				
	3'0" + 1'2"				
	1'0" + 2'8" + 1'0"	COP-WL-MA0144-02	02-0419.08 (Application Filed)	52.0	NO
	1'0" + 2'10" + 1'0"				
	1'2" + 2'8" + 1'2"				
	1'0" + 2'8" + 1'0"				
	1'0" + 3'0" + 1'0"				
	1'2" + 2'10" + 1'2"				
	1'2" + 3'0" + 1'2"				
	2'6" + 2'6" + 2'6"				
	2'8" + 2'8" + 2'8"				
	2'10" + 2'10" + 2'10"				
	3'0" + 3'0" + 3'0"				
XX, OXXO	2'6" + 2'6"	COP-WL-MA0142-02	02-0419.08 (Application Filed)	52.0	NO
	2'8" + 2'8"				
	2'10" + 2'10"				
	3'0" + 3'0"				
	2'6" + 2'6" + 2'6" + 2'6"	COP-WL-MA0145-02	02-0419.08 (Application Filed)	52.0	NO
	2'8" + 2'8" + 2'8" + 2'8"				
	2'10" + 2'10" + 2'10" + 2'10"				
	3'0" + 3'0" + 3'0" + 3'0"				

Notes:

- Door arrangements using fewer panels than what is shown in the above chart also comply under the product approvals shown.
- Assembly details are available from the Masonite International website (www.masonite.com) or from the technical center.
- Installation instructions are available from the Masonite International website (www.masonite.com) or from the technical center.
- Actual design pressure requirement for a specific building design & geographic location is determined by ASCE 7 (Minimum design loads for buildings and other structures). National, state or local building codes specify the edition required.
- Masonite International structural, cyclic, air, water, forced entry/or impact testing is done in accordance with Miami-Dade BCCO protocol PA201, PA202 & PA203.



Test Data Review Certificate
#3026447A, #3026447B,
#3026447C and COP/Test Report
Validation Matrix #3026447A-001,
002, 003; #3026447B-001, 002,
003; #3026447C-001, 002, 003
provides additional information -
available from the ITS/WH
website (www.ettsemko.com), the
Masonite website
(www.masonite.com) or the
Masonite technical center.

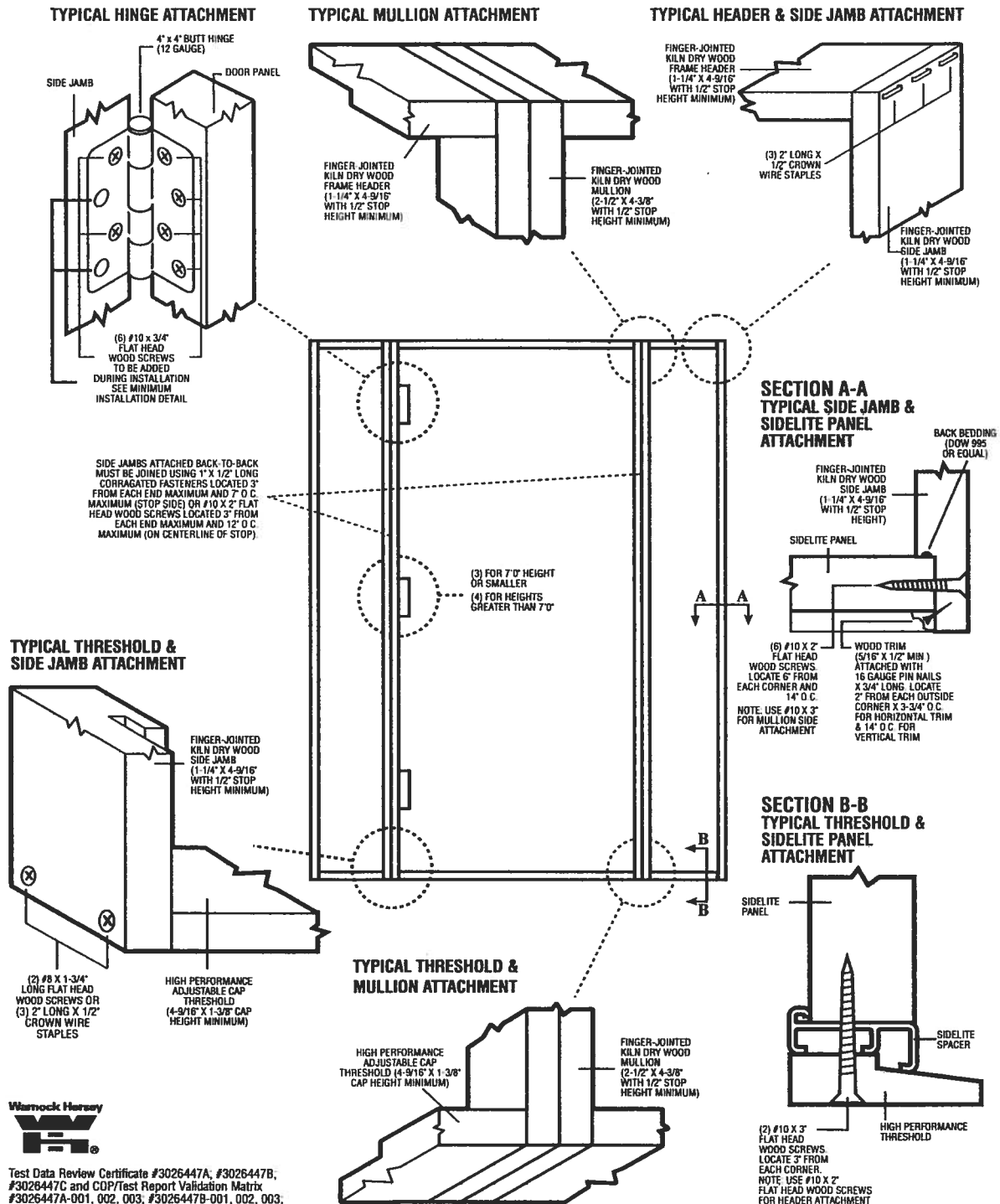
Oakcraft
Wood-Grain  Textured
FIBERGLASS ENTRY DOORS

ARTEK
Non-Textured Fiberglass Entry Doors

PREMDOR Collection
Premium Quality Doors

Exclusively from
Masonite
Masonite International Corporation

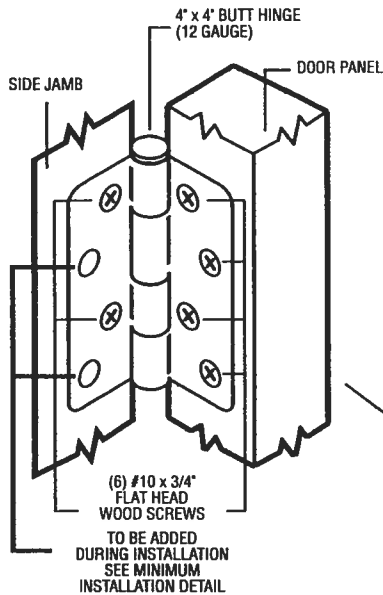
INSWING UNIT WITH SINGLE DOOR & TWO SIDELITES (BOXED CONSTRUCTION)



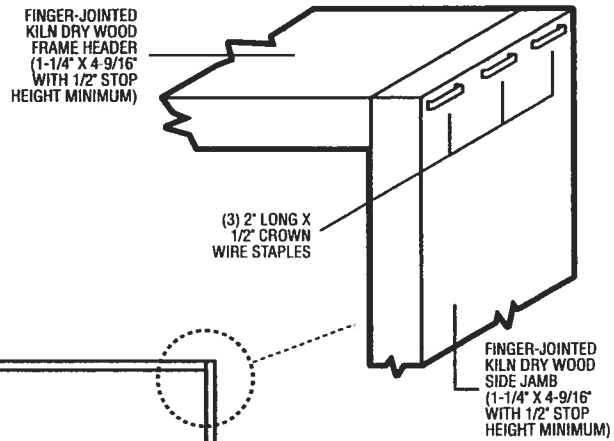
Test Data Review Certificate #3026447A, #3026447B, #3026447C and COP/Test Report Validation Matrix #3026447A-001, 002, 003, #3026447B-001, 002, 003, #3026447C-001, 002, 003 provides additional information - available from the ITS/WH website (www.etsmko.com), the Masonite website (www.masonite.com) or the Masonite technical center.

OUTSWING UNITS WITH SINGLE DOOR

TYPICAL HINGE ATTACHMENT

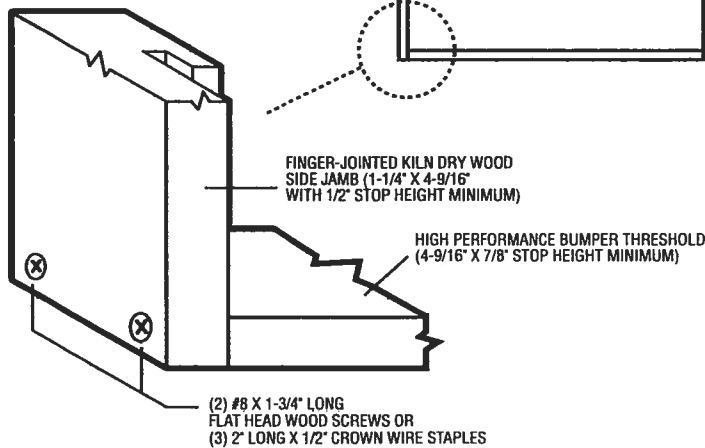


TYPICAL HEADER & SIDE JAMB ATTACHMENT



(3) FOR 7'0\"/>

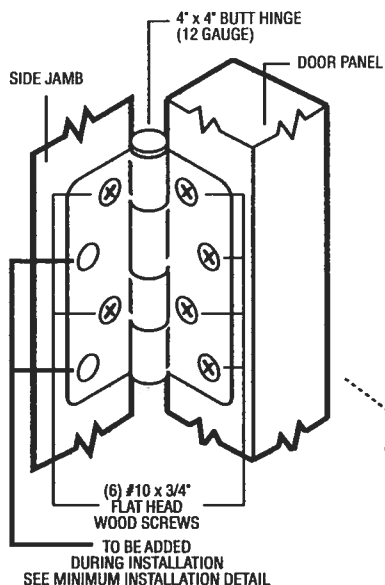
TYPICAL THRESHOLD & SIDE JAMB ATTACHMENT



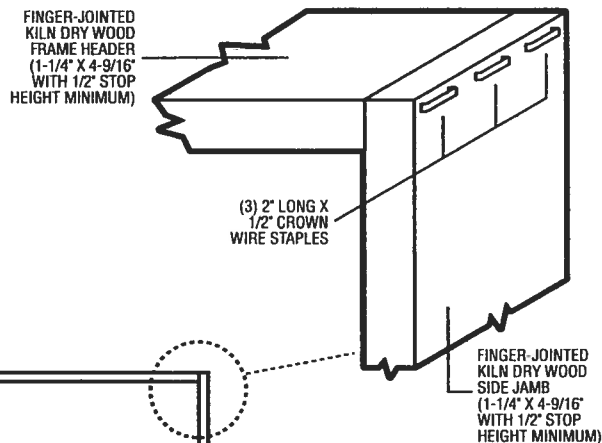
Test Data Review Certificate
#3026447A, #3026447B,
#3026447C and COP/Test Report
Validation Matrix #3026447A-001,
002, 003; #3026447B-001, 002,
003; #3026447C-001, 002, 003
provides additional information -
available from the ITS/WH website
(www.itssemko.com), the Masonite
website (www.masonite.com) or
the Masonite technical center.

INSWING UNIT WITH SINGLE DOOR

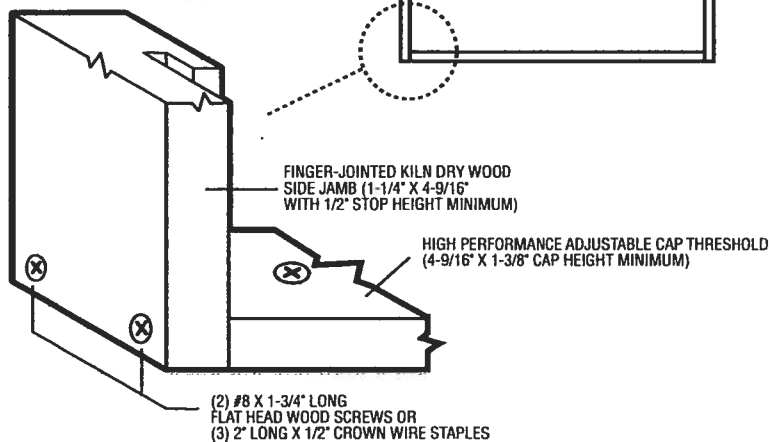
TYPICAL HINGE ATTACHMENT



TYPICAL HEADER & SIDE JAMB ATTACHMENT



TYPICAL THRESHOLD & SIDE JAMB ATTACHMENT



Test Data Review Certificate
#3026447A; #3026447B,
#3026447C and COP/Test Report
Validation Matrix #3026447A-001,
002, 003; #3026447B-001, 002,
003; #3026447C-001, 002, 003
provides additional information -
available from the ITS/WH website
(www.itswh.com), the Masonite
website (www.masonite.com) or
the Masonite technical center.