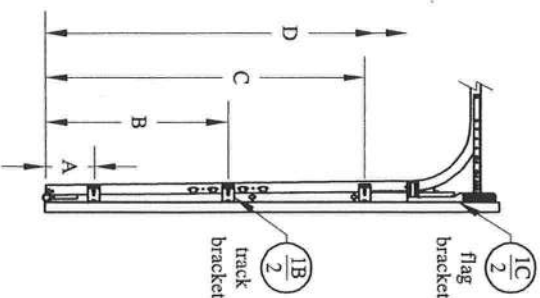
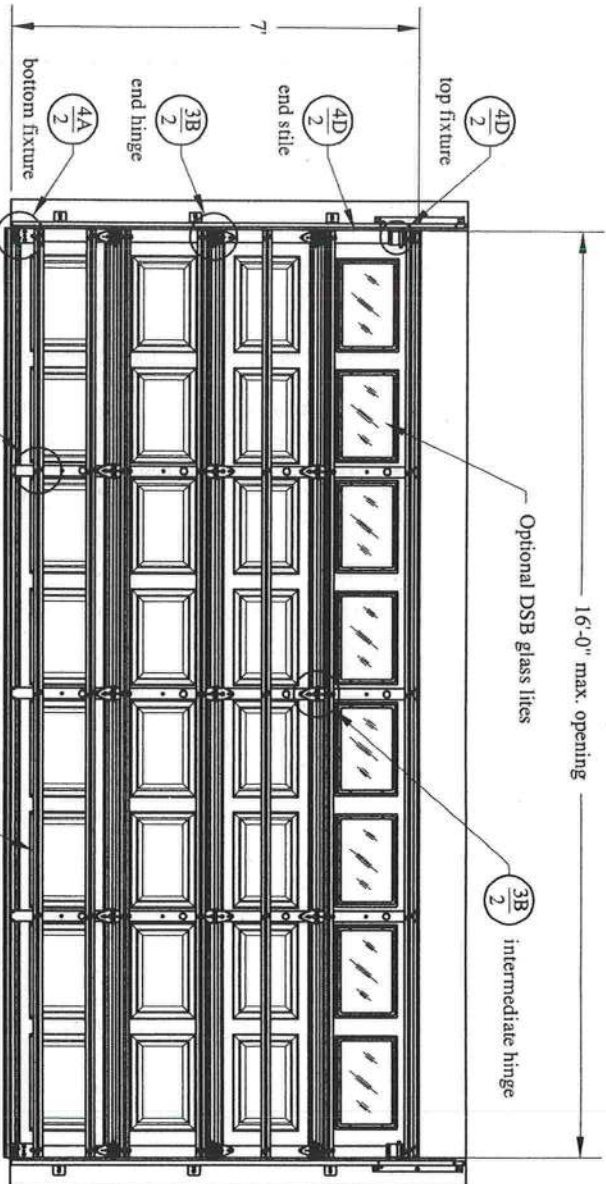


Door Model	Gauge	Decimal
2250/2251	25	.0185
4250/4251	25	.0185
2240/2241	24	.0225
4240/4241	24	.0225
5240/5241	24	.0225



door height	section quantity	strut quantity	trk brkt per side
6'-6" to 7'-0"	4	7	3
7'-6" to 8'-0"	5	8	4
8'-3" to 8'-9"	5	9	4
9'-0" to 10'-6"	6	11	5
10'-9" to 12'-3"	7	13	6
12'-6" to 14'-0"	8	15	7

Refer to Supplemental Instructions for strut placement on doors over 7'-0" high

Track Bracket Chart		door height									
		6'-6"	6'-9"	7'-0"	7'-6"	7'-9"	8'-0"	8'-3"	8'-6"	8'-9"	
track brackets	D	n/a	n/a	n/a	72"	69"	72"	81"	84"	87"	
	C	60"	63"	66"	58"	55"	58"	60"	63"	66"	
	B	35"	35"	38"	34"	31"	34"	32"	35"	38"	
	A	10"	7"	10"	10"	7"	10"	4"	7"	10"	

Track bracket locations shown above are for doors up to five sections high. Additional door sections may be added for a maximum door height of 14'-0". One track bracket (per track) must be added for each section and spaced at a distance not greater than the corresponding section height.



This door has been tested in accordance with ANSI/DASMA 108-2002

Design Pressure (DP): 18.5 pos / 20.7 neg

Test Pressure (TP): 27.8 pos / 31.1 neg

Per 2004 FBC Table 1609.6E, DP meets or exceeds basic wind speed of:

V = 110 MPH for Exposure B and mean roof height of 30' or less

V = 93 MPH for Exposure C and mean roof height of 30' or less

Maximum door size: 16'-0" wide by 14'-0" tall

Glazing and door have not been tested for windborne debris.

Wood buck and supporting structural elements shall be designed by a registered professional engineer for wind loads shown on this drawing.

If door is not electrically operated, a lock must be installed.

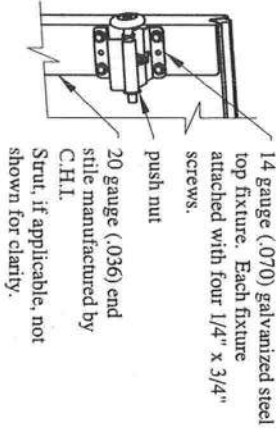
Professional Engineer's seal provided only for verification of windload construction details

John E. Scates, P.E.  
1411 LeMay Street #205  
Carrollton, Texas 75007  
Florida P.E. # 51737

FL 5519

Model 2250/51 (16'-0" wide)  
C.H.I. Drawing: Z3-1607-01100

Details on some views may have been omitted for clarity.

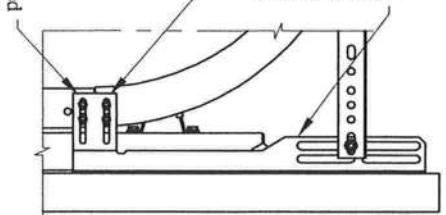


The 2x6 vertical wood jambs are to be grade 2 or better southern pine. Fasteners may be countersunk to provide a flush mounting surface.

12 gauge (.095) galvanized steel track bracket fastened to wood jamb with one 5/16\" x 1-5/8\" wood lag screw per bracket.

20 gauge (.036) center stile manufactured by C.H.I.

12 gauge (.086) galvanized steel flag bracket fastened to wood jamb with three 5/16\" x 1-5/8\" wood lag screws.

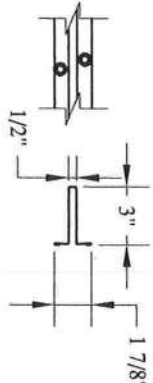
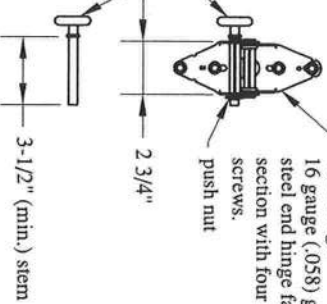


2\" x .051 min. galvanized steel track fastened to track brackets. Each track bracket attached with one 1/4\" x 5/8\" track bolt and nut.

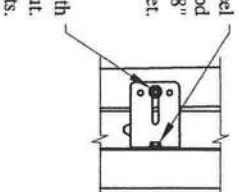
2\" steel track roller.

End Hinge  
16 gauge (.058) galvanized steel end hinge fastened to section with four 1/4\" x 3/4\" screws.

Intermediate Hinge  
18 gauge (.047) galvanized steel intermediate hinge fastened to section with four 1/4\" x 3/4\" screws.



12 gauge (.095) galvanized steel track bracket fastened to wood jamb with one 5/16\" x 1-5/8\" wood lag screw per bracket.



12 gauge (.102) galvanized steel bottom bracket manufactured by C.H.I. Each bracket attached with four red 1/4\" x 3/4\" screws.

Vinyl weatherstrip  
push nut  
Aluminum extrusion

Design Load: 18.5 pos / 20.7 neg  
Test Load: 27.8 pos / 31.1 neg  
page 2 of 2

Professional Engineer's seal provided only for verification of windload construction details

John E. Scates, P.E.  
1411 LeMay Street #205  
Carrollton, Texas 75007  
Florida P.E. # 51737

Model 2250/51 (16-0\" wide)  
C.H.I. Drawing: Z3-1607-01100