

REFLECTED CEILING LEGEND:

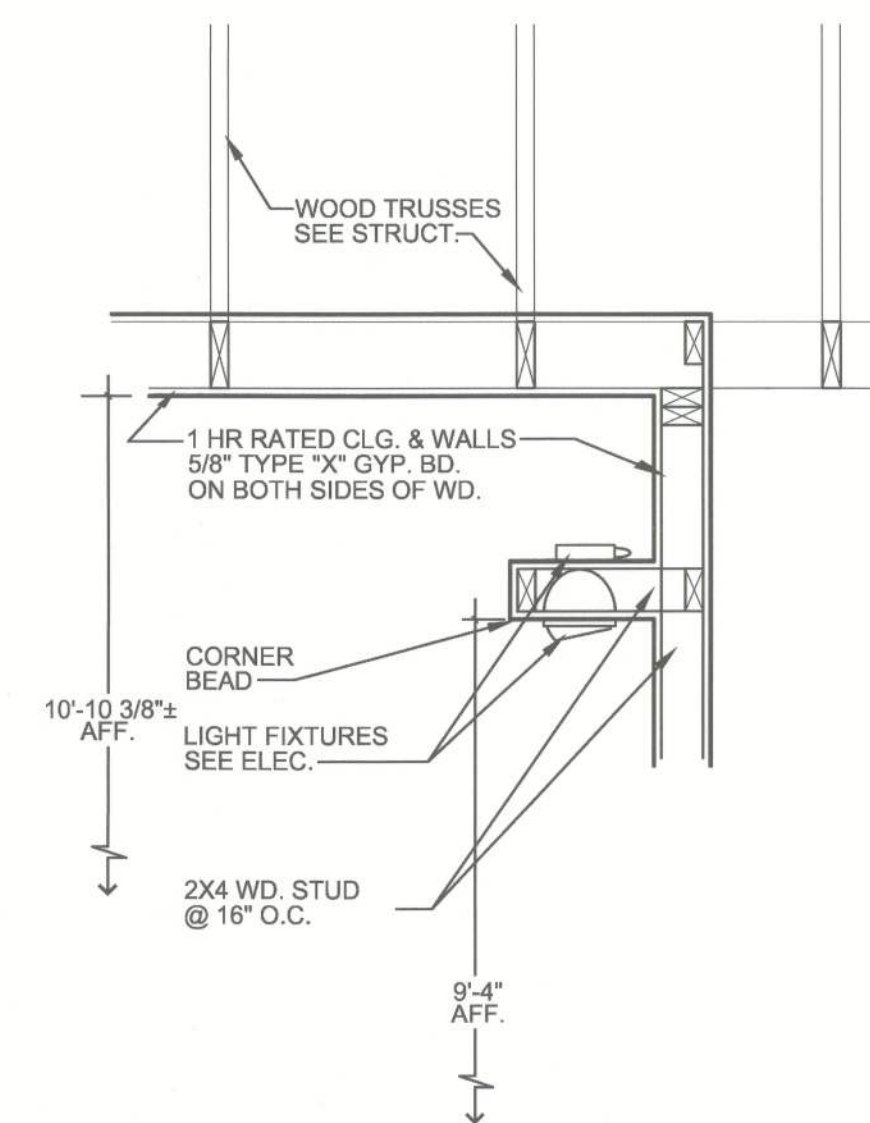
- 2' X 2' ACOUSTICAL CEILING TILE, ACT #1, TYPICAL U.N.O.
- 2' X 2' TEGULAR ACOUSTICAL CEILING TILE, ACT #2.
- 2' X 2' MOIS. RESISTANT ACOUSTICAL CEILING TILE W/ ALUM. GRID, ACT #3
- GYPSUM BOARD CEILING OR BULKHEAD WHERE NOTED
- "XYZ" INDICATE HEIGHT VARIATION WITHIN A SPACE. MAIN HEIGHT IS AS SHOWN ON SCHEDULE
- BOLD LINE INDICATES CHANGE IN CEILING HEIGHT, ACCOMPLISHED W/ CEILING, GRID, TILE, AND FACIA
- 2X4 RECESSED FLUORESCENT LIGHT FIXTURE
- 2X4 RECESSED FLUORESCENT EMERGENCY LIGHT FIXTURE
- INCANDESCENT, H.I.D. OR COMPACT FLUORESCENT LIGHT FIXTURE
- WALL MOUNTED INCANDESCENT, H.I.D. OR COMPACT FLUORESCENT LIGHT FIXTURE
- FLUORESCENT STRIP LIGHT FIXTURE
- WALL MOUNTED FLUORESCENT
- WALL MOUNTED ELECTRICAL DEVICE (WHEN SHOWN ATTACHED TO A DEVICE SYMBOL)
- EXIT LIGHT FIXTURE
- SUPPLY AIR DIFFUSER
- RETURN AIR GRILL
- LINEAR SUPPLY DIFFUSER
- EXHAUST FAN

MECH./ELEC. FIXTURES WHERE SHOWN IS FOR PLACEMENT PREFERENCES ONLY. SEE RESPECTIVE ENG. DWGS. FOR CONSTRUCTION TYPE & OTHER REQS.

CEILING INSTALLATION NOTES:

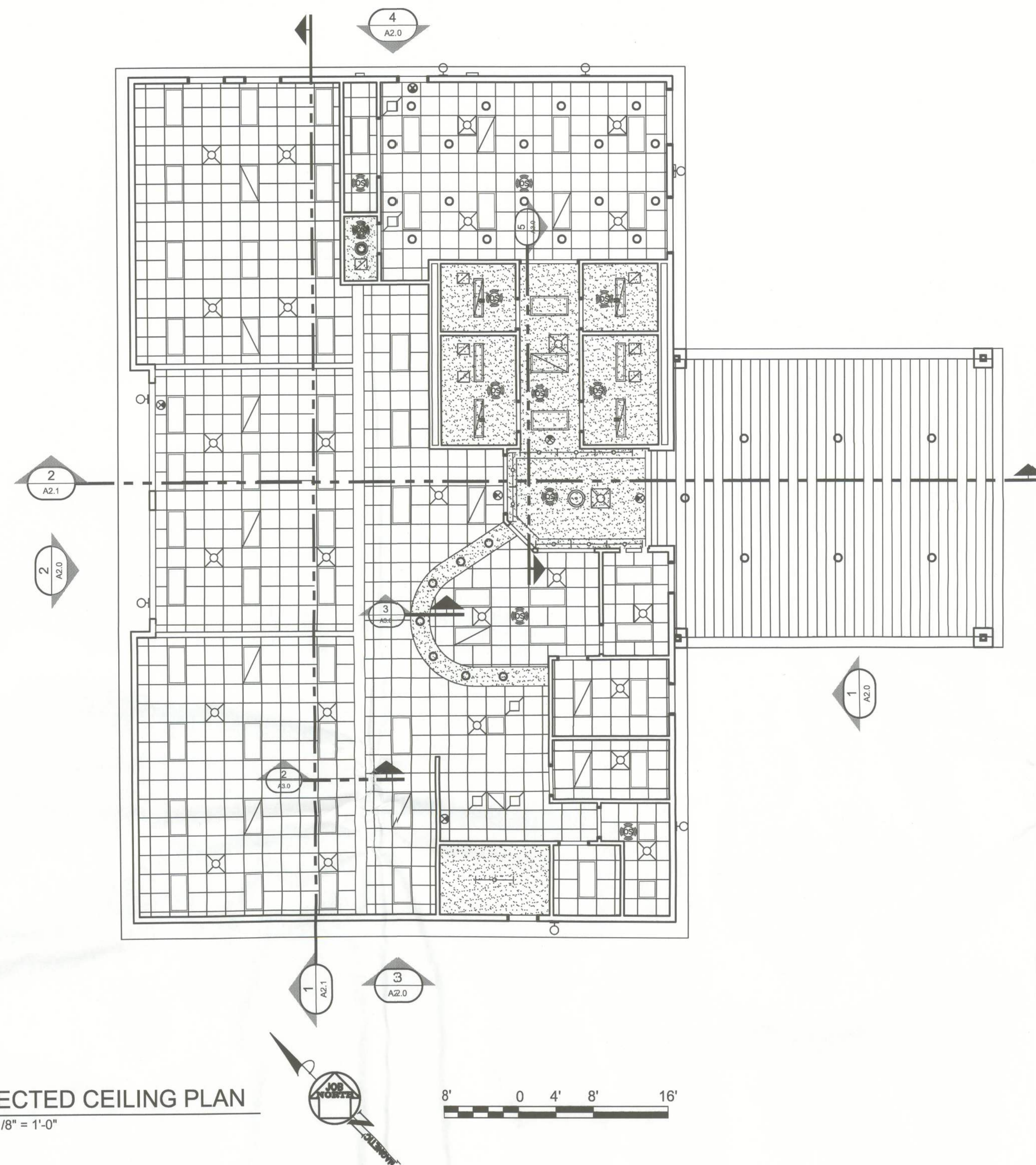
- NO CEILING TILE SHALL BE LESS THAN 12" IN ANY DIRECTION. TO ACCOMPLISH THIS THE CONTRACTOR SHALL FOLLOW THE INSTRUCTION GIVEN AS WHETHER TO ALIGN THE GRID OR CENTER OF TILE WITH THE CENTER OF THE "SPACE".
- "SPACE" REFERS TO A CONTIGUOUS TILE AREA SUCH AS A SEPARATELY TILED ROOM, ALCOVE, LIGHT WELL, ETC.
- CONTRACTOR SHALL MEET SUBMITTAL REQ. OF SPEC. SEC. 09510 INCLUDING CLG. LAY-OUT.
- ANY CONFLICT SHALL BE BROUGHT TO THE ATTENTION OF THE ARCHITECT BEFORE PROCEEDING ANY FURTHER.

*NOTE: CURRENT LIGHT LAYOUT DOES NOT PERMIT THIS RULE IN SOME SPACES. CONFLICT SHALL BE RESOLVED WHERE POSSIBLE OR RULE WAVED.



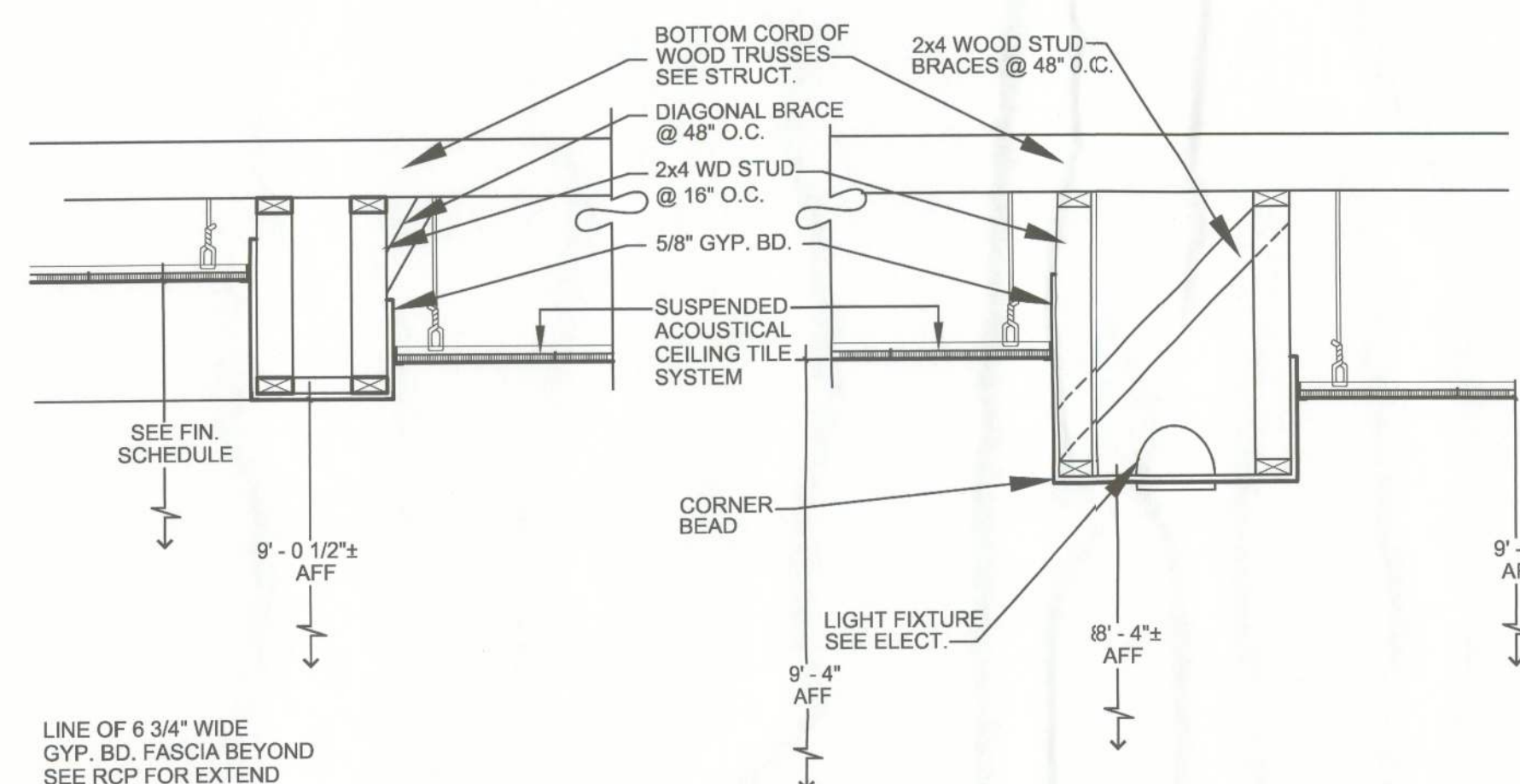
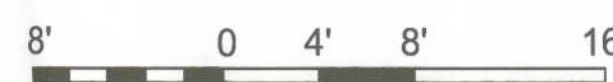
CEILING DETAIL @
LOBBY - RM. 100

SCALE: 3/4" = 1'-0"



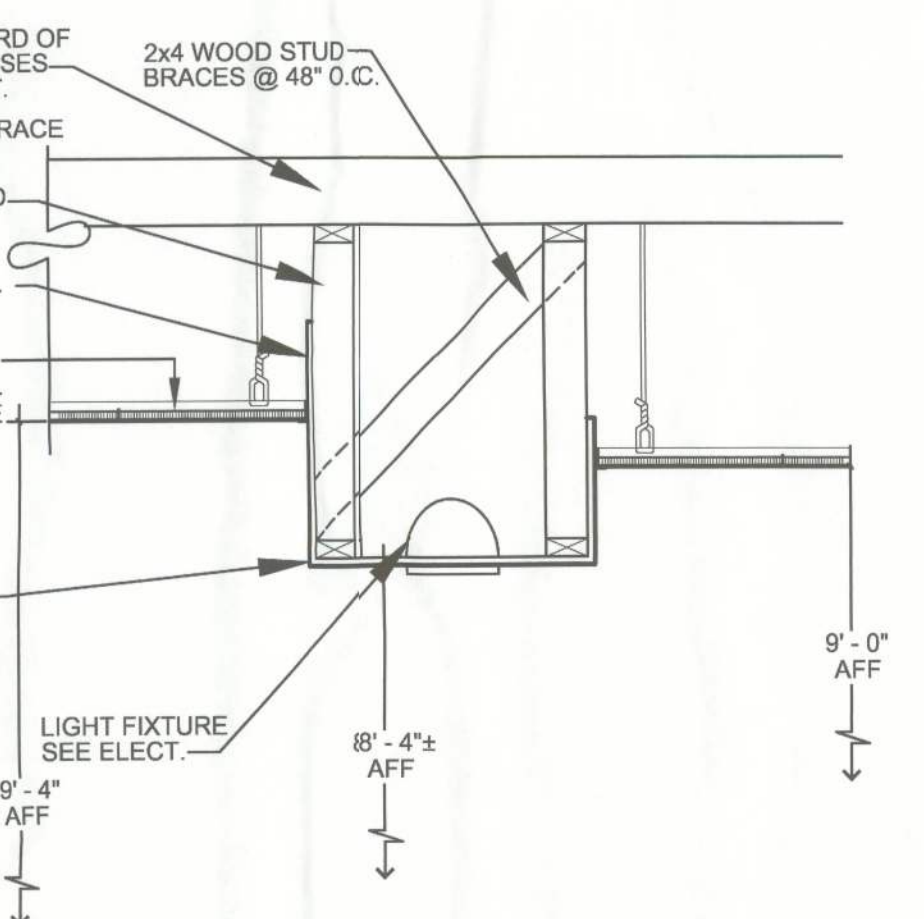
REFLECTED CEILING PLAN

SCALE: 1/8" = 1'-0"



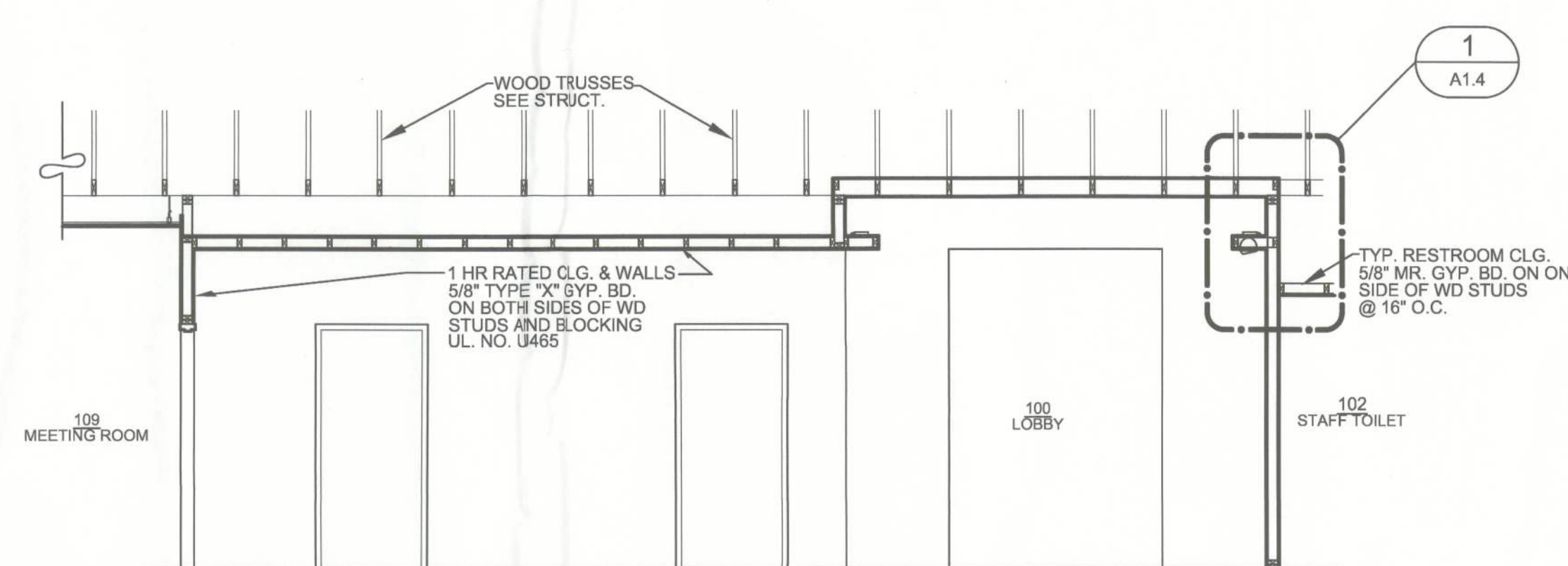
CEILING DETAIL @
CENTRAL BEAM-RM. 101

SCALE: 1 1/2" = 1'-0"



CEILING DETAIL @
CIRC. DESK - RM. 101

SCALE: 1 1/2" = 1'-0"



SECTION THRU RATED
CORRIDOR/LOBBY 100

SCALE: 1/4" = 1'-0"