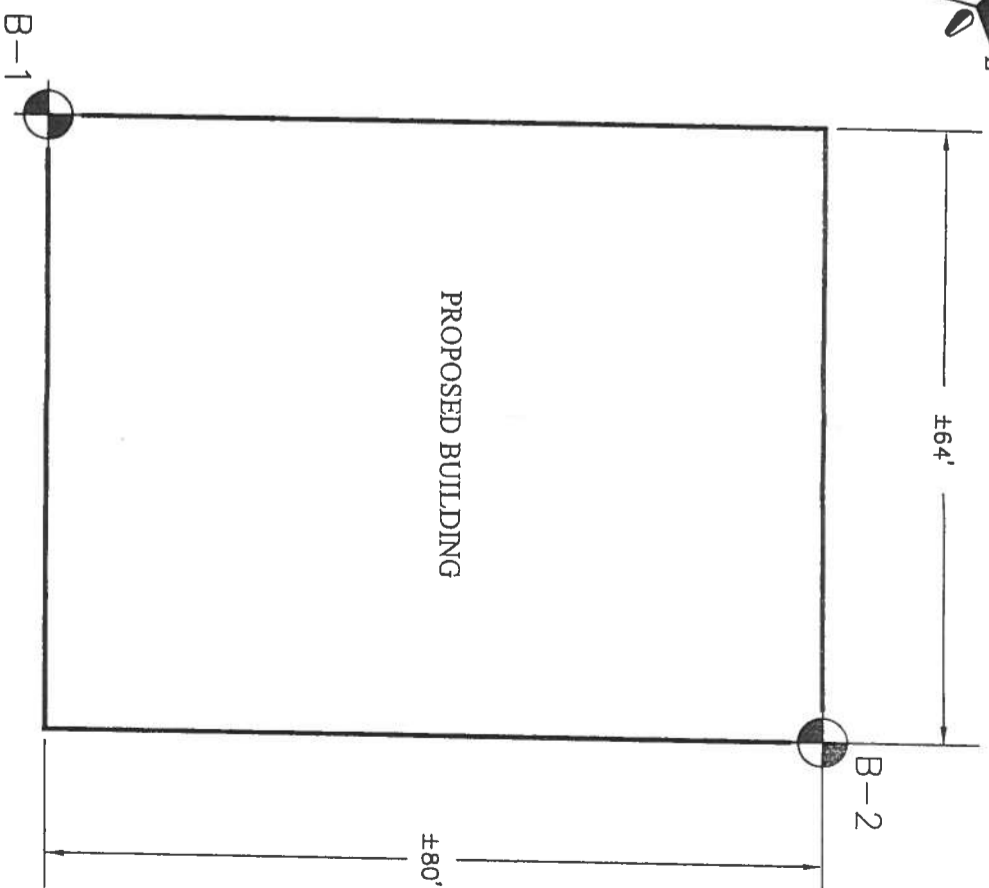


LEGEND

- Light gray, silty fine sand (SP-SM)
- Reddish tan, silty fine sand (SP)
- Light gray and reddish to yellowish tan, mottled, sandy clay (CL)
- Reddish tan and light gray, clayey sand (SC)
- * Standard Penetration Resistance (Blows/ft.) Measured Using a Manual Hammer System
- Groundwater Level Measured at Completion
- T.B.T. Test Boring Terminated
- A.B.T. Auger Boring Terminated
- 20.0' Termination Depth

NOTE: Please refer to text of report for additional information relative to groundwater conditions and potential fluctuations which could occur.

Ellis & Associates, Inc.
7064 Davis Creek Road
Jacksonville, FL 32256



NOT TO SCALE
NOT FOR CONSTRUCTION

SPT Borings Performed on 09/25/2007

SUBSURFACE EXPLORATION
EARL & BARBARA FULTON RESIDENCE
LAKE CITY, COLUMBIA COUNTY, FLORIDA

CAL-TECH TESTING, INC.
P.O. Box 1625
Lake City, Florida 32056-1625
Phone: (386) 755-3633
Fax: (386) 752-5456

FIELD EXPLORATION PLAN & GENERALIZED SUBSURFACE PROFILE			
DRAWN:	APPROVED:	DATE:	FIGURE:
		09/26/2007	1
SCALE:			N.T.S.