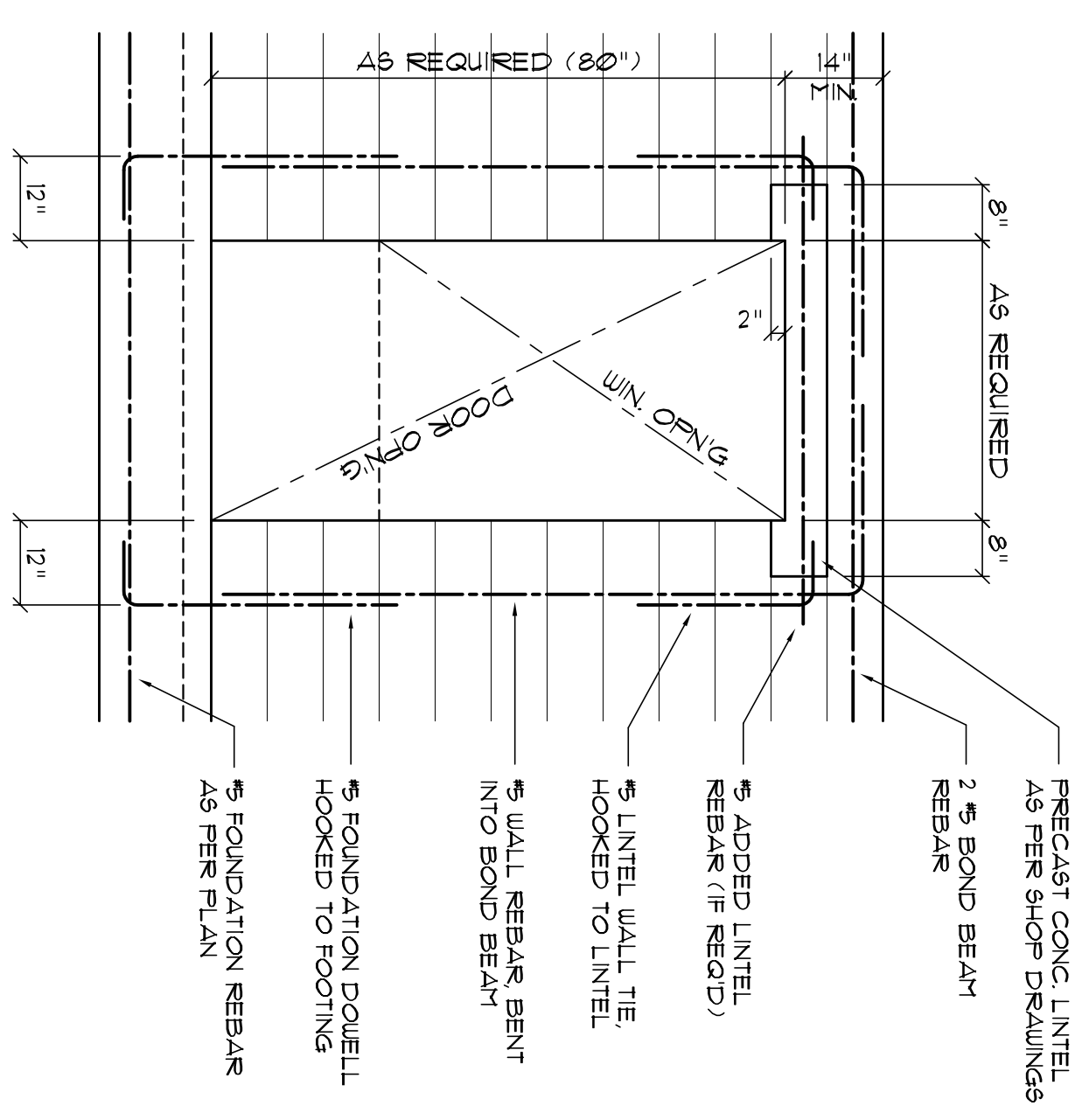


NOTE!
ALL BLOCK CELLS CONTAINING VERTICAL REINFORCING SHALL BE SOLIDLY FILLED WITH CONCRETE - SEE GENERAL NOTES



NOTE!
REFER TO GENERAL NOTES FOR LAP SPLICE AND HOOK MINIMUM LENGTH/SIZE - ALL PER ACI 318-LATEST

Typical Door/Window Opening Reinforcing DET.

SCALE: 1/2" = 1'-0"

A

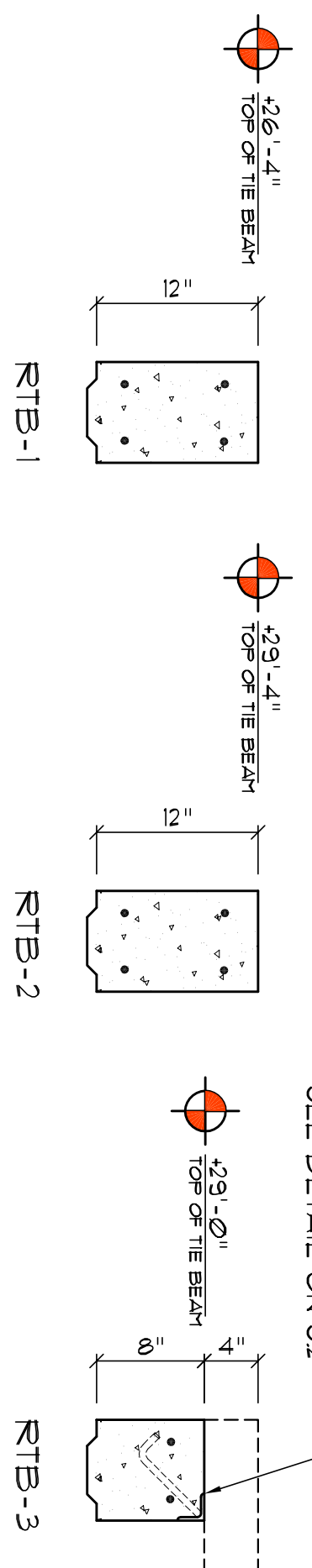
Roof PLAN

SCALE: 1/4" = 1'-0"

TIE BEAM SCHEDULE

MARK	TOP ELEV.	SIZE	TOP REINFG	BOT REINFG	NOTES
RTB-1	26'-4"	8" X 8"	2 #5	1 #5	EXTEND REINFG INTO ADJACENT TB VIA GRAY
RTB-2	28'-0"	8" X 8"	2 #5	1 #5	EXTEND REINFG INTO ADJACENT TB VIA GRAY
RTB-3	28'-4"	8" X 8"	2 #5	1 #5	EXTEND REINFG INTO ADJACENT TB VIA GRAY

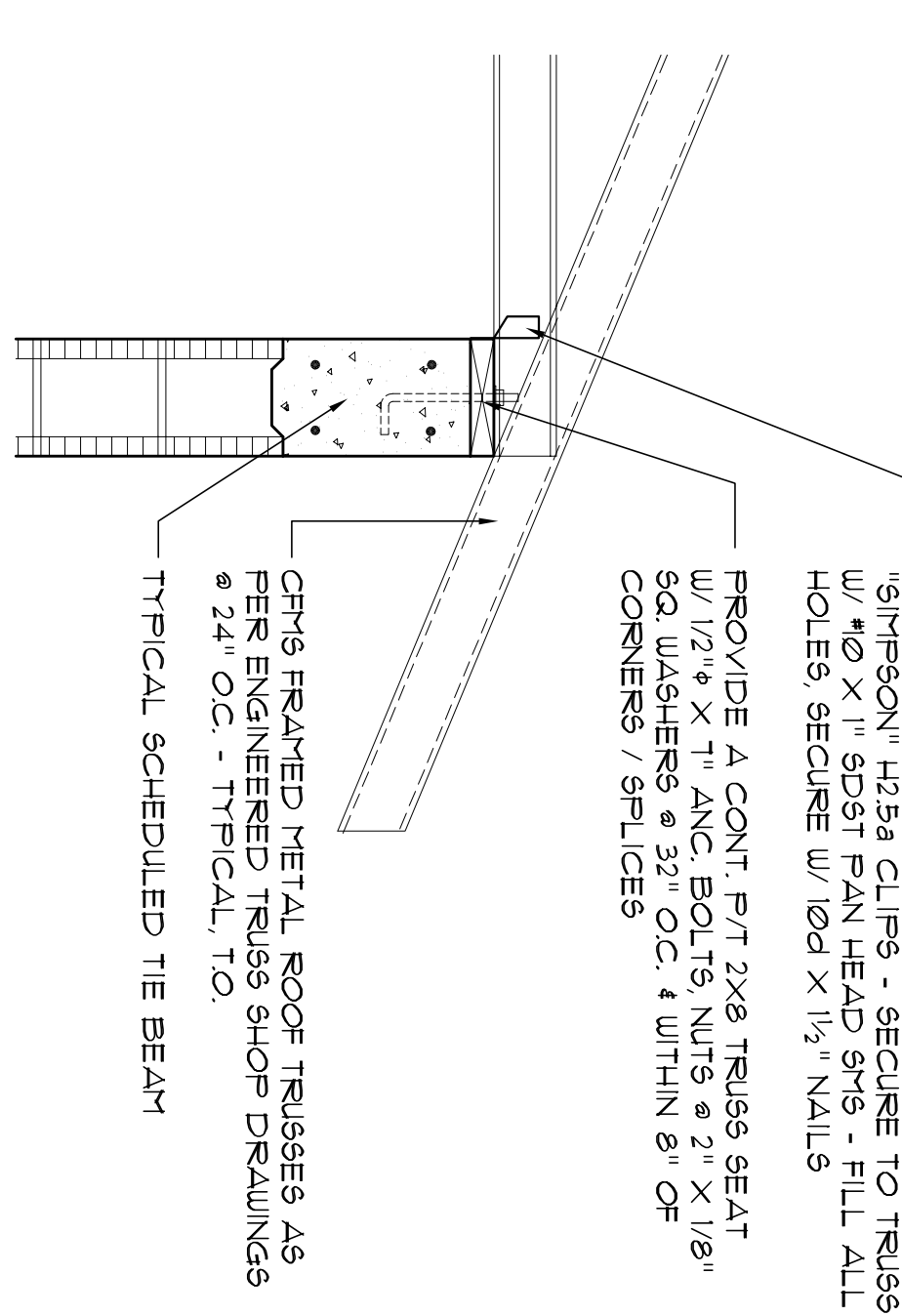
NOTE: N.B. CORNER BEAMS W/ MINIMUM #4 BAR DIAMETER LAP SPLICE MAY BE USED WHERE ADJ. TIE BEAMS FORM A CORNER



Tie Beam DET. B

SCALE: 1" = 1'-0"

B



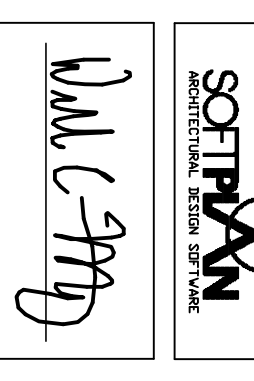
Truss Anc. DET. C

SCALE: 1" = 1'-0"

C

REVISIONS

1	



2nd FLOOR EXPANSION for
BELMONT ACADEMY
CR. 240, COLUMBIA COUNTY, FLORIDA

Digitally signed by: N. P. GEISLER
DN: CN = N. P. GEISLER C = US
O = AR0007005 OU = ARCHITECT
Date: 2020.06.19 13:53:17 -0500

AR0007005

Celebrating 48 Years of Service

1972 - 2020
N.P. Geisler, Architect
AR0007005

NICHOLAS PAUL GEISLER ARCHITECT

1758 NW Brown Rd.
Lake City, FL 32055
386/365-4355

N.C.A.R.B. Certified

JOINT VENTURED WITH

WILLIAM MYERS DESIGN

LAKE CITY, FL 32055
P.O. BOX 888
(386) 708-8406
williammyers.com

JOB NUMBER
2K1403

DATE
29 MAY 2020

SHEET NUMBER
5.4

OF 6 SHEETS