



Product Approval
USER: Public User

[Product Approval Menu](#) > [Product or Application Search](#) > [Application List](#) > **Application Detail**

OFFICE OF THE
SECRETARY

FL #	FL14429-R14												
Application Type	Revision												
Code Version	2023												
Application Status	Approved												
Comments													
Archived	<input type="checkbox"/>												
Product Manufacturer	Andersen Corporation												
Address/Phone/Email	100 Fourth Avenue North Bayport, MN 55003 (651) 264-5308 alan.barstad@AndersenCorp.com												
Authorized Signature	Alan Barstad alan.barstad@AndersenCorp.com												
Technical Representative	Alan Barstad												
Address/Phone/Email	100 Fourth Avenue North Bayport, MN 55033 (651) 265-5308 abarstad@andersencorp.com												
Quality Assurance Representative	Alan Barstad												
Address/Phone/Email	100 Fourth Avenue North Bayport, MN 55003 (651) 264-5308 abarstad@andersencorp.com												
Category	Exterior Doors												
Subcategory	Sliding Exterior Door Assemblies												
Compliance Method	Evaluation Report from a Florida Registered Architect or a Licensed Florida Professional Engineer <input type="checkbox"/> Evaluation Report - Hardcopy Received												
Florida Engineer or Architect Name who developed the Evaluation Report	Hermes F. Norero, P.E.												
Florida License	PE-73778												
Quality Assurance Entity	Window and Door Manufacturers Association-QA												
Quality Assurance Contract Expiration Date	12/16/2030												
Validated By	Zachary R. Priest, P.E. <input checked="" type="checkbox"/> Validation Checklist - Hardcopy Received												
Certificate of Independence	FL14429_R14_COI_COI Andersen SS 2021-10-18.pdf												
Referenced Standard and Year (of Standard)	<table border="1"> <thead> <tr> <th>Standard</th> <th>Year</th> </tr> </thead> <tbody> <tr> <td>AAMA/WDMA/CSA 101/I.S.2/A440</td> <td>2017</td> </tr> <tr> <td>ASTM E1886</td> <td>2019</td> </tr> <tr> <td>ASTM E1996</td> <td>2020</td> </tr> <tr> <td>TAS 201</td> <td>1994</td> </tr> <tr> <td>TAS 202</td> <td>1994</td> </tr> </tbody> </table>	Standard	Year	AAMA/WDMA/CSA 101/I.S.2/A440	2017	ASTM E1886	2019	ASTM E1996	2020	TAS 201	1994	TAS 202	1994
Standard	Year												
AAMA/WDMA/CSA 101/I.S.2/A440	2017												
ASTM E1886	2019												
ASTM E1996	2020												
TAS 201	1994												
TAS 202	1994												

Equivalence of Product Standards
Certified By

Sections from the Code

Product Approval Method

Method 1 Option D

Date Submitted 12/26/2023
Date Validated 12/28/2023
Date Pending FBC Approval 01/03/2024
Date Approved 02/13/2024

Summary of Products

FL #	Model, Number or Name	Description
14429.1	100 Series Gliding Patio Door, Transom, & Sidelight (Non-HVHZ) (Non-Impact)	100 Series Gliding Patio Door, Transom, & Sidelight (Non-HVHZ)(Non-Impact)
Limits of Use Approved for use in HVHZ: No Approved for use outside HVHZ: Yes Impact Resistant: No Design Pressure: +30/-30 Other: See Installation Instructions and Evaluation report for allowable sizes, installation requirements and limits of use.		Installation Instructions FL14429_R14_II_AWD120_SS_2023-08-14.pdf Verified By: Hermes F. Norero, P.E. Florida P.E. 73778 Created by Independent Third Party: Yes Evaluation Reports FL14429_R14_AE_PER6661_SS_2023-08-14.pdf Created by Independent Third Party: Yes
14429.2	200 Series Narroline Gliding Patio Door (Non-HVHZ)(Non-Impact)	200 Series Narroline Gliding Patio Door (Non-HVHZ)(Non-Impact)
Limits of Use Approved for use in HVHZ: No Approved for use outside HVHZ: Yes Impact Resistant: No Design Pressure: N/A Other: See Installation Instructions and Evaluation report for allowable design pressures, sizes, installation requirements and limits of use.		Installation Instructions FL14429_R14_II_AWD112_SS_2023-08-14.pdf Verified By: Hermes F. Norero, P.E. Florida P.E. 73778 Created by Independent Third Party: Yes Evaluation Reports FL14429_R14_AE_PER6662_SS_2023-08-14.pdf Created by Independent Third Party: Yes
14429.3	200 Series Perma-Shield Gliding Patio Door (Non-HVHZ)(Non-Impact)	200 Series Perma-Shield Gliding Patio Door (Non-HVHZ)(Non-Impact)
Limits of Use Approved for use in HVHZ: No Approved for use outside HVHZ: Yes Impact Resistant: No Design Pressure: N/A Other: See Installation Instructions and Evaluation report for allowable design pressures, sizes, installation requirements and limits of use.		Installation Instructions FL14429_R14_II_AWD191_SS_2023-08-14.pdf Verified By: Hermes F. Norero, P.E. Florida P.E. 73778 Created by Independent Third Party: Yes Evaluation Reports FL14429_R14_AE_PER6663_SS_2023-08-14.pdf Created by Independent Third Party: Yes
14429.4	400 Series Gliding Patio Door (Non-HVHZ)(Non-Impact)	400 Series Gliding Patio Door (Non-HVHZ)(Non-Impact)
Limits of Use Approved for use in HVHZ: No Approved for use outside HVHZ: Yes Impact Resistant: No Design Pressure: N/A Other: See Installation Instructions and Evaluation report for allowable design pressures, sizes, installation requirements and limits of use.		Installation Instructions FL14429_R14_II_AWD117_SS_2023-08-14.pdf Verified By: Hermes F. Norero, P.E. Florida P.E. 73778 Created by Independent Third Party: Yes Evaluation Reports FL14429_R14_AE_PER6664_SS_2023-08-14.pdf Created by Independent Third Party: Yes
14429.5	A-Series Gliding Patio Door (Non-HVHZ)(Non-Impact)	A-Series Gliding Patio Door (Non-HVHZ)(Non-Impact)
Limits of Use Approved for use in HVHZ: No Approved for use outside HVHZ: Yes Impact Resistant: No		Installation Instructions FL14429_R14_II_AWD306_SS_2022-08-16.pdf Verified By: Hermes F. Norero, P.E. Florida P.E. 73778 Created by Independent Third Party: Yes

Design Pressure: N/A Other: See Installation Instructions and Evaluation report for allowable design pressures, sizes, installation requirements and limits of use.		Evaluation Reports FL14429_R14_AE_PER8112_SS_2022-08-16.pdf Created by Independent Third Party: Yes
14429.6	A-Series Gliding Patio Door with PG Upgrade (HVHZ)(Non-Impact)	A-Series Gliding Patio Door with PG Upgrade (HVHZ)(Non-Impact)
Limits of Use Approved for use in HVHZ: Yes Approved for use outside HVHZ: Yes Impact Resistant: No Design Pressure: N/A Other: See Installation Instructions and Evaluation report for allowable design pressures, sizes, installation requirements and limits of use.		Installation Instructions FL14429_R14_II_AWD119_SS_2023-12-22.pdf Verified By: Hermes F. Norero, P.E. Florida P.E. 73778 Created by Independent Third Party: Yes Evaluation Reports FL14429_R14_AE_PER9052_SS_2023-12-28.pdf Created by Independent Third Party: Yes
14429.7	A-Series Gliding Patio Door with Stormwatch Protection (HVHZ) (Impact)	A-Series Gliding Patio Door with Stormwatch Protection (HVHZ)(Impact)
Limits of Use Approved for use in HVHZ: Yes Approved for use outside HVHZ: Yes Impact Resistant: Yes Design Pressure: N/A Other: See Installation Instructions and Evaluation report for allowable design pressures, sizes, installation requirements and limits of use.		Installation Instructions FL14429_R14_II_AWD118_SS_2023-12-22.pdf Verified By: Hermes F. Norero, P.E. Florida P.E. 73778 Created by Independent Third Party: Yes Evaluation Reports FL14429_R14_AE_PER9051_SS_2023-12-22.pdf Created by Independent Third Party: Yes

[Back](#)
[Next](#)

[Contact Us](#) :: [2601 Blair Stone Road, Tallahassee FL 32399](#) Phone: 850-487-1824

The State of Florida is an AA/EEO employer. [Copyright 2007-2013 State of Florida](#). :: [Privacy Statement](#) :: [Accessibility Statement](#) :: [Refund Statement](#)

Under Florida law, email addresses are public records. If you do not want your e-mail address released in response to a public-records request, do not send electronic mail to this entity. Instead, contact the office by phone or by traditional mail. If you have any questions, please contact 850.487.1395. *Pursuant to Section 455.275(1), Florida Statutes, effective October 1, 2012, licensees licensed under Chapter 455, F.S. must provide the Department with an email address if they have one. The emails provided may be used for official communication with the licensee. However email addresses are public record. If you do not wish to supply a personal address, please provide the Department with an email address which can be made available to the public. To determine if you are a licensee under Chapter 455, F.S., please click [here](#).

Product Approval Accepts:





398 E DANIA BEACH BLVD. SUITE 338, DANIA BEACH, FL 33004

Product Evaluation Report

of

**Andersen Corporation
400 Series Gliding Patio Door
(Non-HVHZ) (Non-Impact)**

for

Florida Product Approval

FL# FL14429

Report No. 6664

Current Florida Building Code

Method: 1 – D (Engineering Evaluation)
Category: Exterior Doors
Sub – Category: Sliding Exterior Door Assemblies

**Product: 400 Series Gliding Patio Door
(Non-HVHZ) (Non-Impact)**
Materials: Wood/Aluminum/PVC
Product Dimensions: See Installation Instructions, AWD117

Prepared for:

**Andersen Corporation
100 Fourth Avenue N.
Bayport, MN 55003-1096**

Prepared by:

Hermes F. Norero, P.E.
Florida Professional Engineer # 73778
Date: 6/16/2023

Contents:

Evaluation Report Pages 1 – 4

Digitally signed by Hermes F. Norero, P.E.
Reason: I am approving this document
Date: 2023.08.14 20:30:40 -04'00'



Hermes F. Norero, P.E.
Florida P.E. No. 73778

398 E DANIA BEACH BLVD. SUITE 338, DANIA BEACH, FL 33004

Manufacturer: Andersen Corporation

Product Category: Exterior Doors

Product Sub-Category: Sliding Exterior Door Assemblies

Compliance Method: State Product Approval Method (1)(d)

Product Name: 400 Series Gliding Patio Door
(Non-HVHZ) (Non-Impact)

Scope: This is a Product Evaluation Report issued by Hermes F. Norero, P.E. (FL # 73778) for **Andersen Corporation** based on Method 1d of the State of Florida Product Approval, Department of Business and Professional Regulation - Florida Building Commission.

Hermes F. Norero, P.E. does not have nor will acquire financial interest in the company manufacturing or distributing the product or in any other entity involved in the approval process of the product named herein.

This product has been evaluated for use in locations adhering to the current Florida Building Code.

See Installation Instructions **AWD117**, signed and sealed by Hermes F. Norero, P.E. (FL # 73778) for specific use parameters.

Limits of Use:

1. This product has been evaluated and is in compliance with the current Florida Building Code, excluding the "High Velocity Hurricane Zone" (HVHZ).
2. Product anchors shall be as listed and spaced as shown on details. Anchor embedment into substrate material shall be beyond wall dressing or stucco.
3. When used in areas requiring wind borne debris protection this product complies with Chapter 16 of the current Florida Building Code and does require an impact resistant covering.
4. Site conditions that deviate from the details of installation instructions **AWD117** require further engineering analysis by a licensed engineer or registered architect.
5. See Installation Instructions **AWD117** for size and design pressure limitations.

398 E DANIA BEACH BLVD. SUITE 338, DANIA BEACH, FL 33004

Quality Assurance: The manufacturer has demonstrated compliance of manufacture of products in accordance with the Florida Building Code for manufacturing under a quality assurance program audited by an approved quality assurance entity through **Window and Door Manufacturers Association** (FBC Organization # QUA2515).

Performance Standards: The product described herein has been evaluated per:

- AAMA/WDMA/CSA 101/I.S.2/A440-17
- Florida Building Code Section 1709.8

Referenced Data:

1. Product Testing performed by **Architectural Testing Inc.**
(FBC Organization # TST1558)
Report: Report Date:
C2573.01-201-47 10/04/12
98094.01-201-47 04/06/10
98092.01-201-47 04/06/10
98093.01-201-47 04/06/10
98089.01-201-47 04/06/10
2. Quality Assurance
Window and Door Manufacturers Association
(FBC Organization #: QUA2515)

Installation:

Refer to Installation Instructions (**AWD117**) for anchor types, spacing, and more details of the installation requirements.

Design Pressure:

Refer to Installation Instructions (**AWD117**) for design pressure configurations.

Equivalence of Test Standards:

Various test standards have been evaluated for differences in test methodology, if any, between tested editions of the test standards listed below and those editions referenced in the current Florida Building Code. Andersen Corporation has tested their products to the following test standard edition(s):

- 1) AAMA/WDMA/CSA 101/I.S.2/A440-08

Chapter 35 of the current Florida Building Code references the following editions of the above mentioned test standards:

- 1) AAMA/WDMA/CSA 101/I.S.2/A440-17

After review of the above mentioned referenced standards and editions, it has been found that the results and tests carried out meet the requirements for compliance. All referenced standards have been found to be equivalent.

s:\projects\andersen windows\cc-23-0347 - fbc 2023 code change (8th edition)\dwgs\114429\awd191.dwg 6/8/2023 2:32 PM

ANDERSEN CORPORATION

200 SERIES PERMA-SHIELD GLIDING PATIO DOOR (NON-HVHZ)(NON-IMPACT)

INSTALLATION NOTES:

1. ONE (1) INSTALLATION ANCHOR IS REQUIRED AT EACH ANCHOR LOCATION SHOWN, UNLESS OTHERWISE STATED.
2. THE NUMBER OF INSTALLATION ANCHORS DEPICTED IS THE MINIMUM NUMBER OF ANCHORS TO BE USED FOR PRODUCT INSTALLATION.
3. INSTALL INDIVIDUAL INSTALLATION ANCHORS WITHIN A TOLERANCE OF ±1/2 INCH OF THE DEPICTED LOCATION IN THE ANCHOR LAYOUT DETAIL (I.E., WITHOUT CONSIDERATION OF TOLERANCES). TOLERANCES ARE NOT CUMULATIVE FROM ONE INSTALLATION ANCHOR TO THE NEXT.
4. SHIM AS REQUIRED AT EACH INSTALLATION ANCHOR WITH LOAD BEARING SHIM(S). MAXIMUM ALLOWABLE SHIM STACK TO BE 3/8". SHIM WHERE SPACE OF 1/16 INCH OR GREATER OCCURS. SHIM(S) SHALL BE CONSTRUCTED OF HIGH DENSITY PLASTIC OR BETTER.
5. **THROUGH FRAME:** FOR INSTALLATION INTO 2X BUCK OR FRAMING USE #10 WOOD SCREWS OF SUFFICIENT LENGTH TO ACHIEVE 1 1/2 INCH MINIMUM EMBEDMENT INTO WOOD SUBSTRATE AND MAINTAIN MINIMUM 3/4" EDGE DISTANCE.
6. **THROUGH FRAME:** FOR INSTALLATION THROUGH 1X BUCK TO CONCRETE/MASONRY, OR DIRECTLY INTO CONCRETE/MASONRY, USE ¾" ITW TAPCONS OF SUFFICIENT LENGTH TO ACHIEVE 1 1/4 INCH MINIMUM EMBEDMENT AND MAINTAIN MINIMUM 2" EDGE DISTANCE.
7. **THROUGH FRAME:** FOR INSTALLATION INTO METAL SUBSTRATES USE #10 GRADE 5 SELF-DRILLING OR SELF-TAPPING SCREWS OF SUFFICIENT LENGTH TO ACHIEVE 3 THREADS MINIMUM PENETRATION BEYOND METAL FRAME SUBSTRATE AND MAINTAIN MINIMUM 3/4" EDGE DISTANCE.
8. MINIMUM EMBEDMENT AND EDGE DISTANCE EXCLUDE WALL FINISHES, INCLUDING BUT NOT LIMITED TO STUCCO, FOAM, BRICK VENEER, AND SIDING.
9. INSTALLATION ANCHORS AND ASSOCIATED HARDWARE MUST BE MADE OF CORROSION RESISTANT MATERIAL OR HAVE A CORROSION RESISTANT COATING.
10. FOR HOLLOW BLOCK AND GROUT FILLED BLOCK, DO NOT INSTALL INSTALLATION ANCHORS INTO MORTAR JOINTS. EDGE DISTANCE IS MEASURED FROM FREE EDGE OF BLOCK OR EDGE OF MORTAR JOINT INTO FACE SHELL OF BLOCK.
11. INSTALLATION ANCHORS SHALL BE INSTALLED IN ACCORDANCE WITH ANCHOR MANUFACTURER'S INSTALLATION INSTRUCTIONS, AND ANCHORS SHALL NOT BE USED IN SUBSTRATES WITH STRENGTHS LESS THAN THE MINIMUM STRENGTH SPECIFIED BY THE ANCHOR MANUFACTURER.
12. INSTALLATION ANCHOR CAPACITIES FOR PRODUCTS HEREIN ARE BASED ON SUBSTRATE MATERIALS WITH THE FOLLOWING PROPERTIES:

A. WOOD - MINIMUM SPECIFIC GRAVITY OF 0.55.

B. CONCRETE -MINIMUM COMPRESSIVE STRENGTH OF 3000 PSI.

C. MASONRY - STRENGTH CONFORMANCE TO ASTM C-90. MIN BLOCK COMPRESSIVE STRENGTH 2000 PSI.

D. STEEL - MINIMUM YIELD STRENGTH OF 33 KSI. MINIMUM WALL THICKNESS OF 33 MILS (20 GAUGE).

E. ALUMINUM - MINIMUM 6063-T5 ALLOY. MINIMUM WALL THICKNESS OF 1/8".

GENERAL NOTES:

1. THE PRODUCT SHOWN HEREIN IS DESIGNED AND MANUFACTURED TO COMPLY WITH THE CURRENT FLORIDA BUILDING CODE (FBC), **EXCLUDING** HVHZ AND HAS BEEN EVALUATED ACCORDING TO THE FOLLOWING:


- AAMA/WDMA/CSA 101/I.S.2/A440-17
2. ADEQUACY OF THE EXISTING STRUCTURAL CONCRETE/MASONRY, 2X AND METAL STUD FRAMING AS A MAIN WIND FORCE RESISTING SYSTEM CAPABLE OF WITHSTANDING AND TRANSFERRING APPLIED PRODUCT LOADS TO THE FOUNDATION IS THE RESPONSIBILITY OF THE ENGINEER OR ARCHITECT OF RECORD FOR THE PROJECT OF INSTALLATION.
3. 1X AND 2X BUCKS (WHEN USED) SHALL BE DESIGNED AND ANCHORED TO PROPERLY TRANSFER ALL LOADS TO THE STRUCTURE. BUCK DESIGN AND INSTALLATION IS THE RESPONSIBILITY OF THE ENGINEER OR ARCHITECT OF RECORD FOR THE PROJECT OF INSTALLATION.
4. THE INSTALLATION DETAILS DESCRIBED HEREIN ARE GENERIC AND MAY NOT REFLECT ACTUAL CONDITIONS FOR A SPECIFIC SITE. IF SITE CONDITIONS CAUSE INSTALLATION TO DEVIATE FROM THE REQUIREMENTS DETAILED HEREIN, A LICENSED ENGINEER OR ARCHITECT SHALL PREPARE SITE SPECIFIC DOCUMENTS FOR USE WITH THIS DOCUMENT.
5. APPROVED IMPACT PROTECTIVE SYSTEM **IS REQUIRED** TO PROTECT THIS PRODUCT IN AREAS REQUIRING IMPACT RESISTANCE.
6. DOOR MATERIAL: WOOD AND VINYL
7. GLASS SHALL MEET THE REQUIREMENTS OF ASTM E1300 GLASS CHARTS. SEE SHEET 4 FOR GLAZING DETAIL.
8. DESIGNATIONS "X" AND "O" STAND FOR THE FOLLOWING:

X: ACTIVE PANEL

O: STATIONARY PANEL
9. CUSTOM SIZES AVAILABLE UPON REQUEST. CUSTOM DESIGN PRESSURE WILL BE ASSIGNED EQUAL TO NEXT LARGER STANDARD SIZE.

TABLE OF CONTENTS	
SHEET	SHEET DESCRIPTION
1	GENERAL AND INSTALLATION NOTES
2	ELEVATIONS & ANCHOR LAYOUTS
3	VERTICAL SECTIONS
4	VERTICAL SECTIONS & GLAZING DETAIL
5	HORIZONTAL SECTIONS
6	SIDELITE MULLIONS
7	MULLION ANCHOR DETAILS

DESIGN PRESSURE RATING				
PRODUCT	O.A. SIZE	CONFIGURATION	DESIGN PRESSURE	MISSILE IMPACT RATING
PSGPD4380S IG	50 ¾" X 95 ½"	O	+45.0 / -45.0 PSF	NON-IMPACT
PSGPD8180AS IG	96" X 95 ½"	XO	+25.0 / -25.0 PSF	
PSGPD81611AS DPUP IG	96" X 82 ¾"	XO	+40.0 / -40.0 PSF	



ANDERSEN
WINDOWS & DOORS

100 FOURTH AVE NORTH
BAYPORT, MN 55003-1096


PH: (651) 264-5150 FX: (651) 264-5485

TITLE: 200 SERIES PERMA-SHIELD
GLIDING PATIO DOOR
(NON-HVHZ)(NON-IMPACT)

GENERAL AND INSTALLATION NOTES

PREPARED BY:

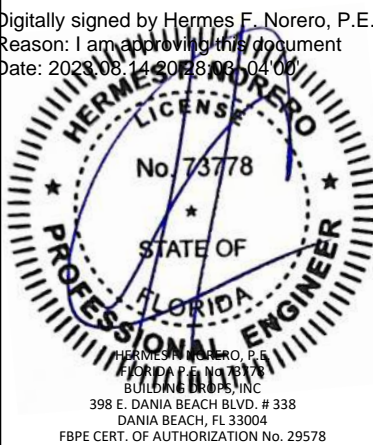
BUILDING DROPS, INC.
398 E. DANIA BEACH BLVD., STE. 338
DANIA BEACH, FL 33004
PH: (954) 399-8478
FAX: (954) 744-4738
WEB: www.buildingdrops.com



REMARKS	BY	DATE
7TH FBC CODE CHANGE	SR	3.18.20
8TH FBC CODE CHANGE	SH	5.24.23

THE INSTALLATION DETAILS DESCRIBED HEREIN ARE GENERIC AND MAY NOT REFLECT ACTUAL CONDITIONS FOR A SPECIFIC SITE. IF SITE CONDITIONS CAUSE INSTALLATION TO DEVIATE FROM THE REQUIREMENTS DETAILED HEREIN, A LICENSED ENGINEER OR ARCHITECT SHALL PREPARE SITE SPECIFIC DOCUMENTS FOR USE WITH THIS DOCUMENT

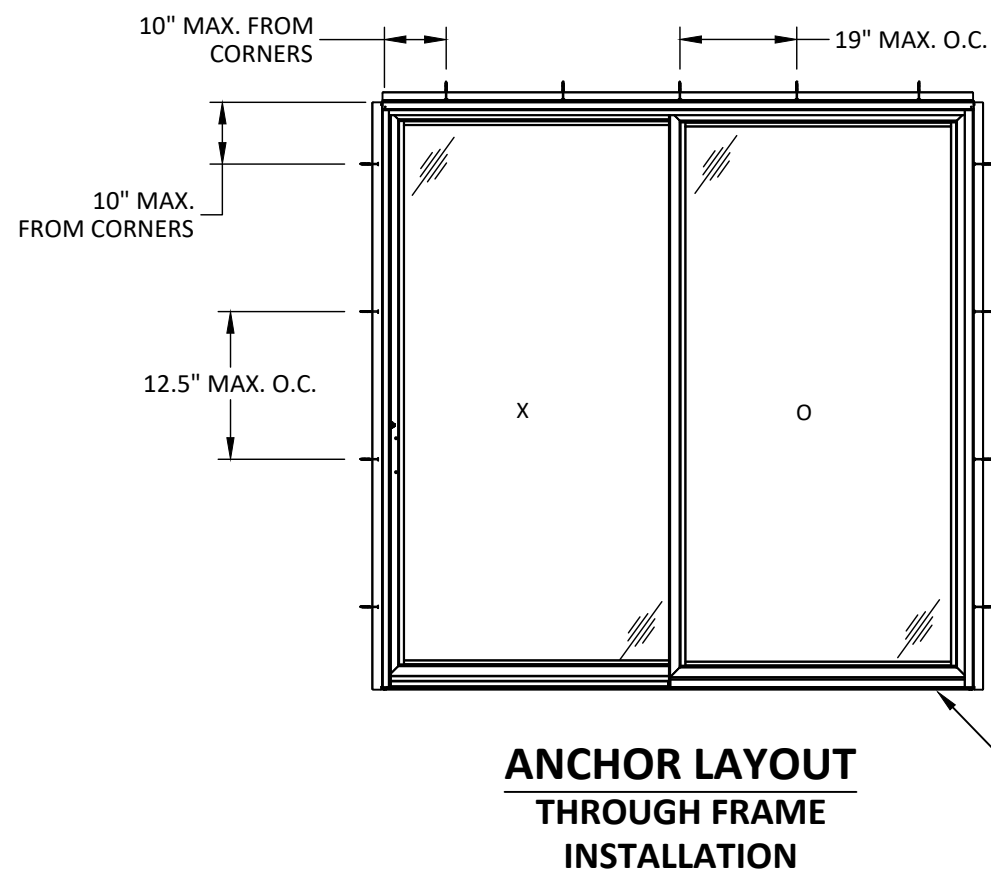
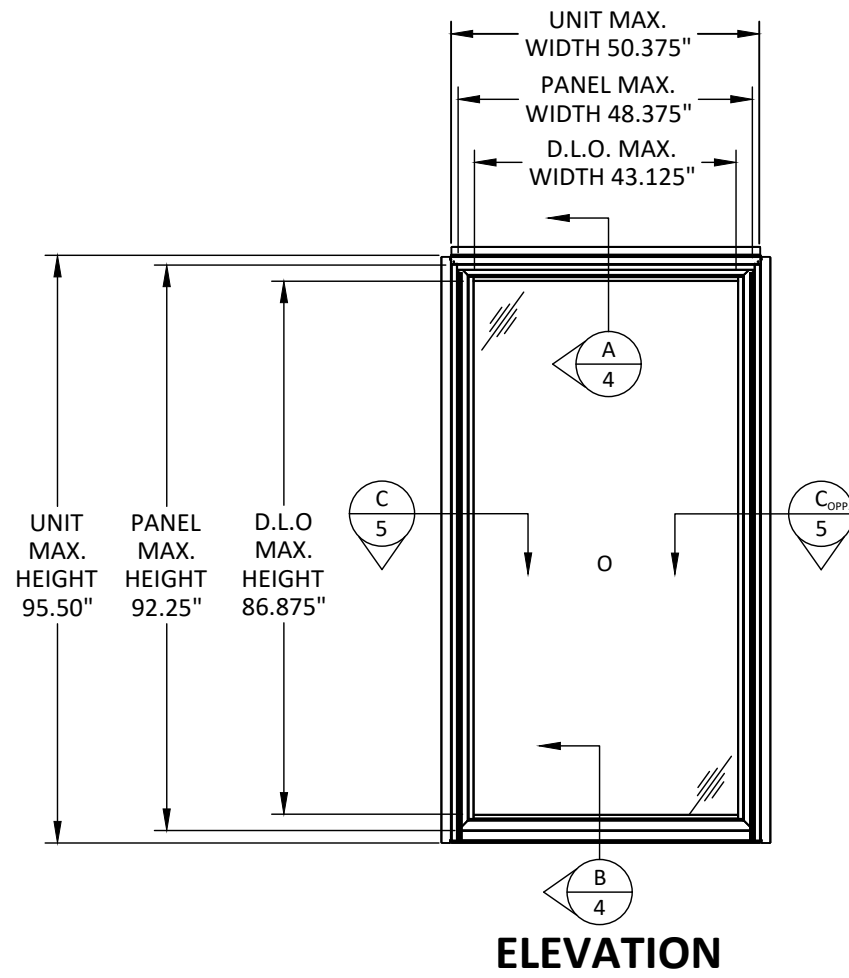
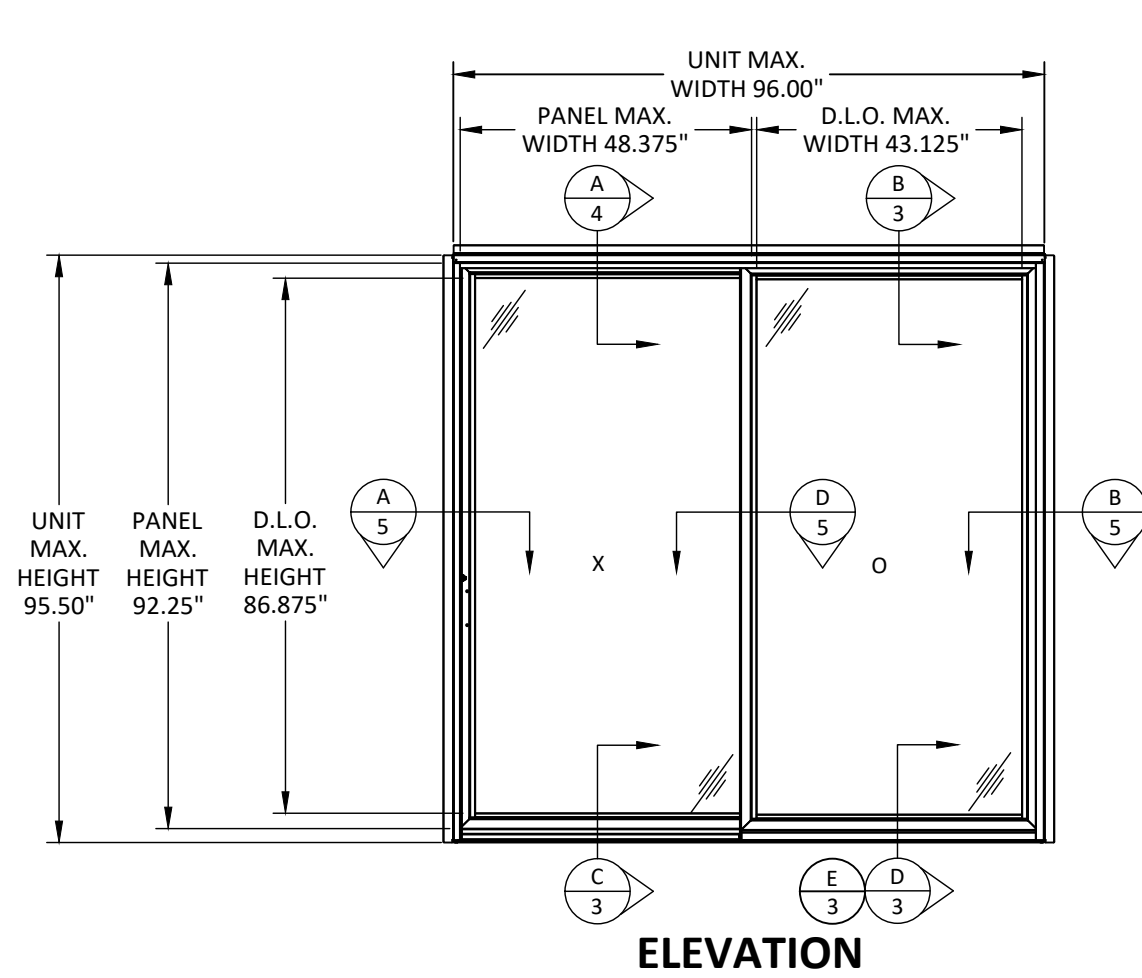
Digitally signed by Hermes F. Norero, P.E.
Reason: I am approving this document
Date: 2023.08.14 20:48:08 -0400



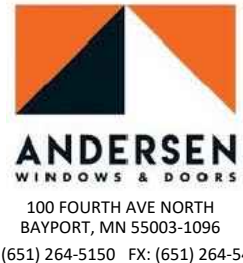
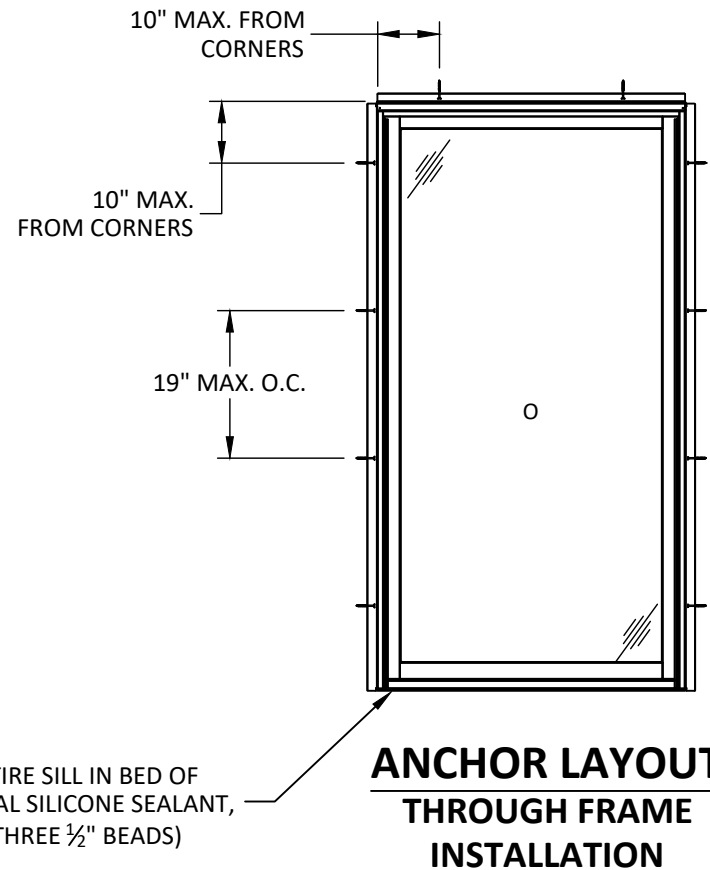
HERMES F. NORERO, P.E.
FLORIDA PROFESSIONAL ENGINEER
BUILDING DROPS, INC.
398 E. DANIA BEACH BLVD. # 338
DANIA BEACH, FL 33004
FBPE CERT. OF AUTHORIZATION No. 29578

FL #:	FL14429
DATE:	10.16.17
DWG. BY:	CHK. BY:
SM	HFN
SCALE:	NTS
DWG. #:	AWD191
SHEET:	1
	OF 7

s:\projects\andersen windows\cc-23-0347 - fbc 2023 code change (8th edition)\dwgs\114429\awd191.dwg 6/8/2023 2:32 PM



SET ENTIRE SILL IN BED OF STRUCTURAL SILICONE SEALANT, (MIN THREE ½" BEADS)

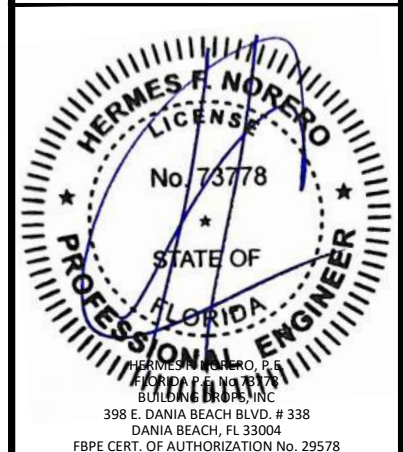


TITLE: 200 SERIES PERMA-SHIELD
GLIDING PATIO DOOR
(NON-HVHZ)/(NON-IMPACT)
ELEVATIONS & ANCHOR LAYOUTS

PREPARED BY:
BUILDING DROPS, INC.
398 E. DANIA BEACH BLVD., STE. 338
DANIA BEACH, FL 33004
PH: (954) 399-8478
FAX: (954) 744-4738
WEB: www.buildingdrops.com

REMARKS	BY	DATE
7TH FBC CODE CHANGE	SR	3.18.20
8TH FBC CODE CHANGE	SH	5.24.23

THE INSTALLATION DETAILS DESCRIBED HEREIN ARE GENERIC AND MAY NOT REFLECT ACTUAL CONDITIONS FOR A SPECIFIC SITE. IF SITE CONDITIONS CAUSE INSTALLATION TO DEVIATE FROM THE REQUIREMENTS DETAILED HEREIN, A LICENSED ENGINEER OR ARCHITECT SHALL PREPARE SITE SPECIFIC DOCUMENTS FOR USE WITH THIS DOCUMENT

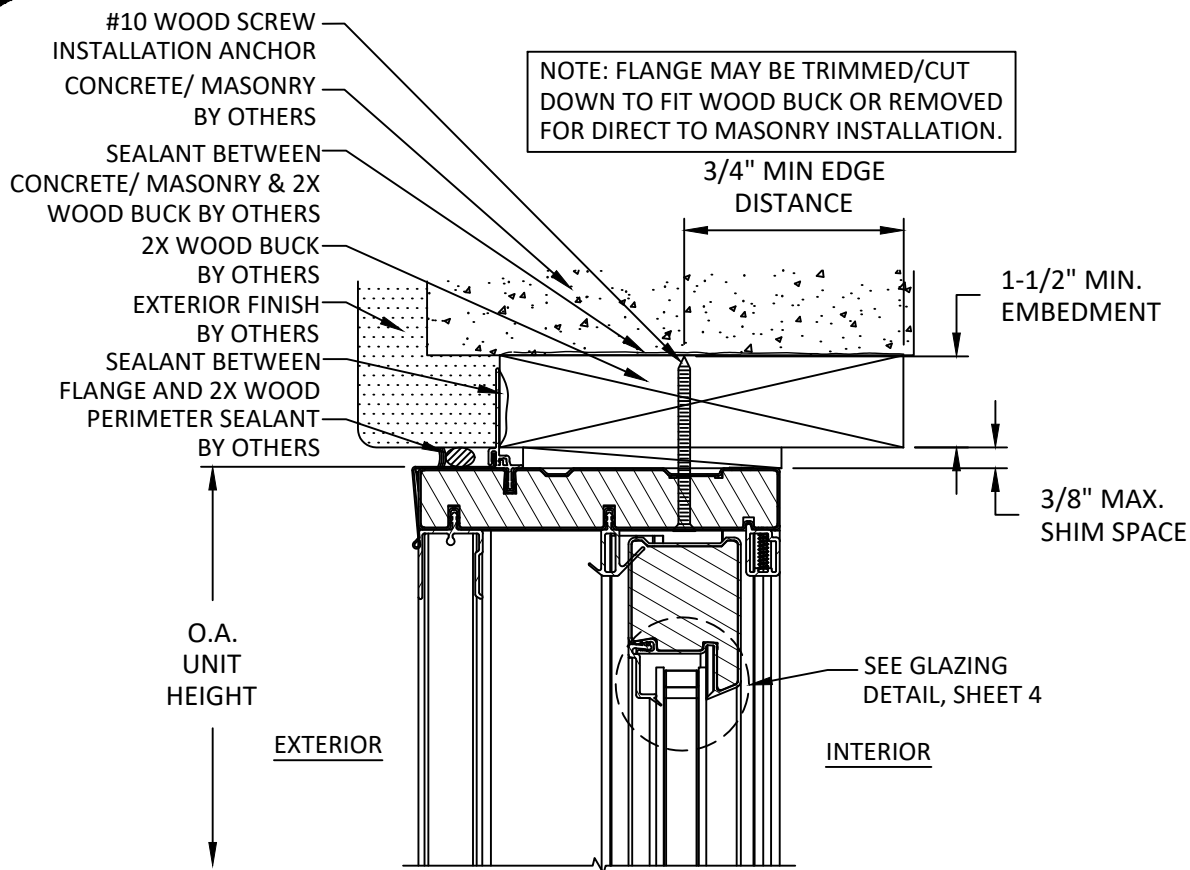


FL #:	FL14429
DATE:	10.16.17
DWG. BY:	CHK. BY:
SM	HFN
SCALE:	NTS
DWG. #:	AWD191
SHEET:	

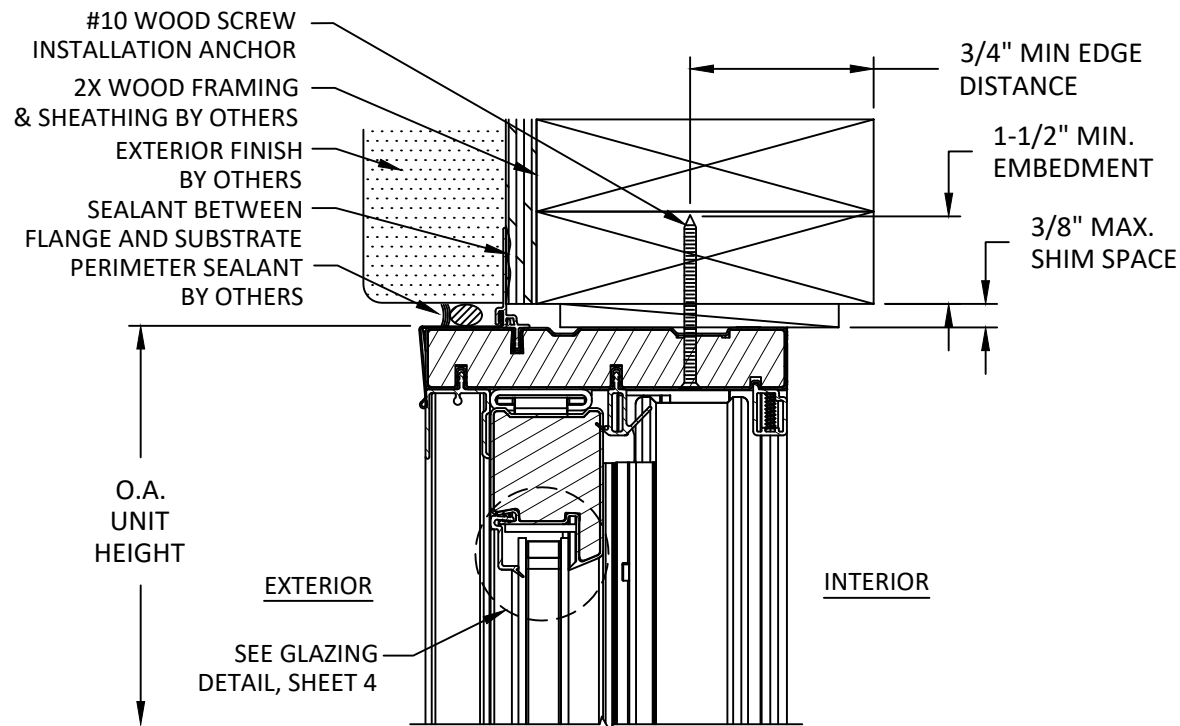
2

6/8/2023 2:32 PM

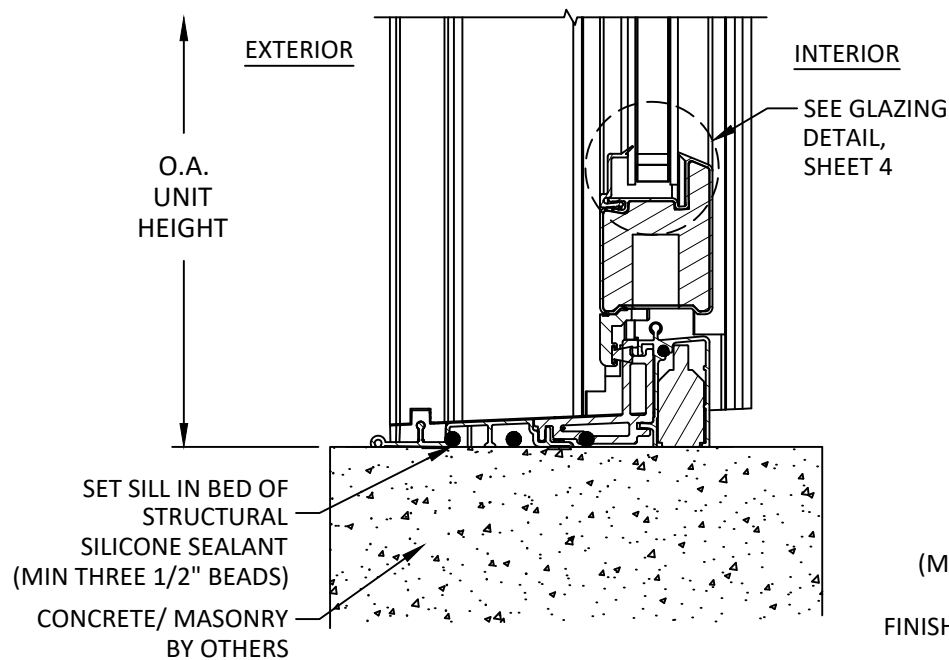
s:\projects\andersen windows\cc-23-0347 - bc 2023 code change (8th edition)\dwgs\114429\awd191.dwg



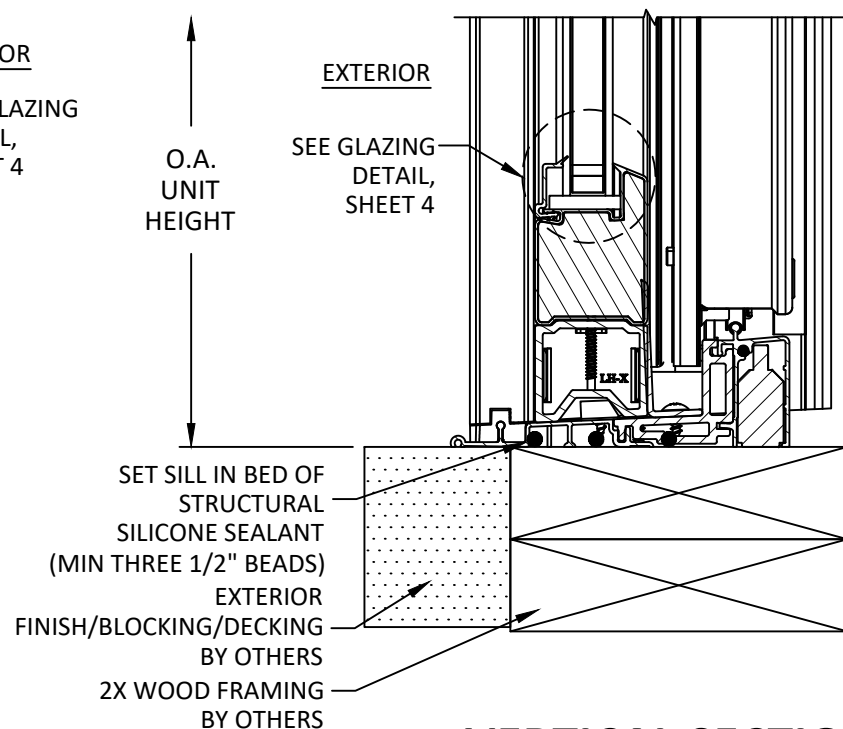
A
3 VERTICAL SECTION
HEAD - 2X WOOD/CONCRETE/MASONRY
THROUGH FRAME



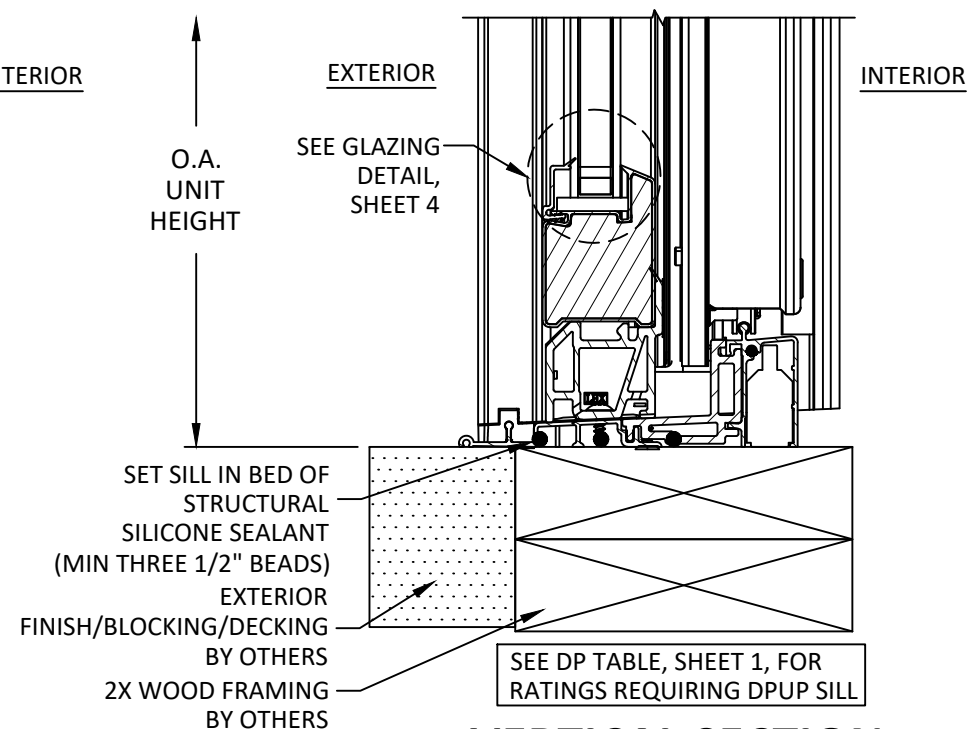
B
3 VERTICAL SECTION
HEAD - 2X WOOD FRAMING
THROUGH FRAME



C
3 VERTICAL SECTION
SILL - CONCRETE



D
3 VERTICAL SECTION
STANDARD SILL - 2X WOOD



E
3 VERTICAL SECTION
DPUP SILL - 2X WOOD



100 FOURTH AVE NORTH
BAYPORT, MN 55003-1096

PH: (651) 264-5150 FX: (651) 264-5485

TITLE: 200 SERIES PERMA-SHIELD
GLIDING PATIO DOOR
(NON-HVHZ)/(NON-IMPACT)

VERTICAL SECTIONS

PREPARED BY:

BUILDING DROPS, INC.

398 E. DANIA BEACH BLVD., STE. 338
DANIA BEACH, FL 33004

PH: (954) 399-8478
FAX: (954) 744-4738

WEB: www.buildingdrops.com



REMARKS	BY	DATE
7TH FBC CODE CHANGE	SR	3.18.20
8TH FBC CODE CHANGE	SH	5.24.23

THE INSTALLATION DETAILS DESCRIBED HEREIN
ARE GENERIC AND MAY NOT REFLECT ACTUAL CONDITIONS
FOR A SPECIFIC SITE. IF SITE CONDITIONS CAUSE
INSTALLATION TO DEVIATE FROM THE REQUIREMENTS
DETAILED HEREIN, A LICENSED ENGINEER OR ARCHITECT
SHALL PREPARE SITE SPECIFIC DOCUMENTS FOR USE WITH
THIS DOCUMENT



FL #:
FL14429

DATE: **10.16.17**

DWG. BY:
SM

CHK. BY:
HFN

SCALE: **NTS**

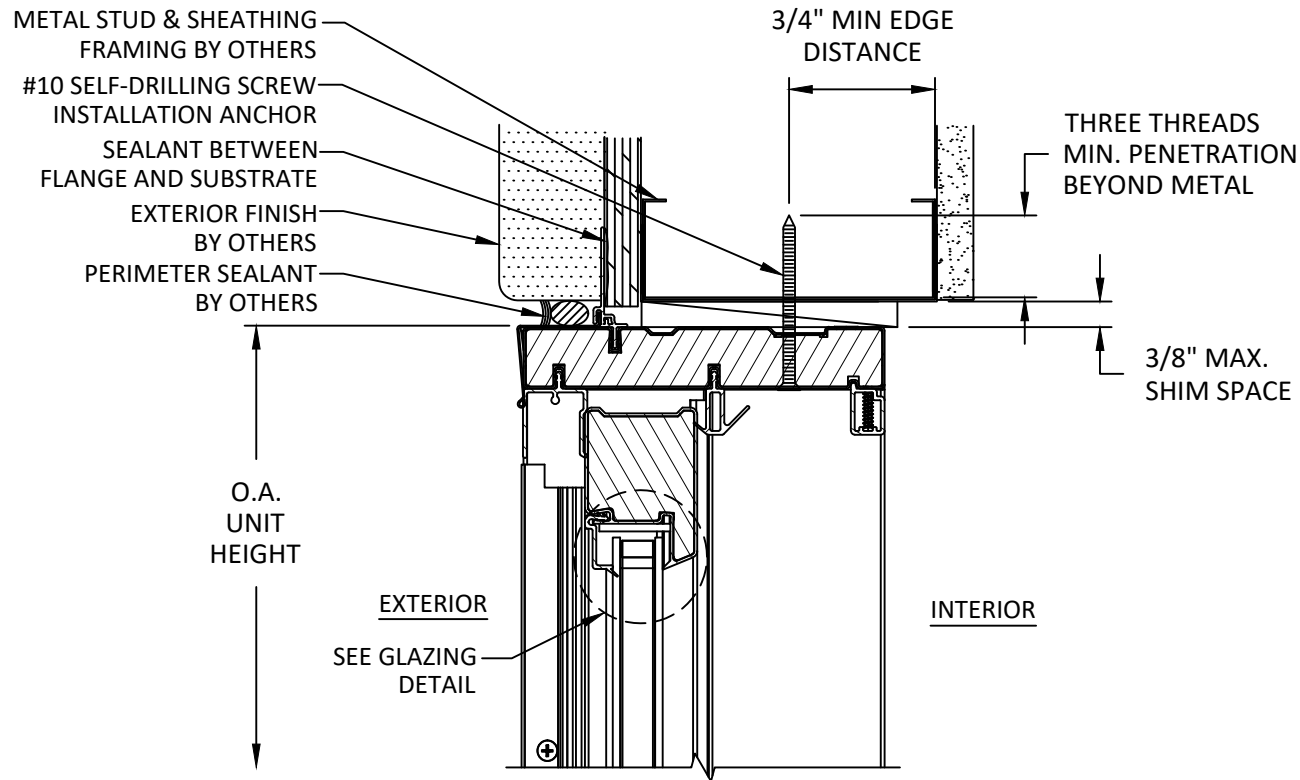
DWG. #: **AWD191**

SHEET:

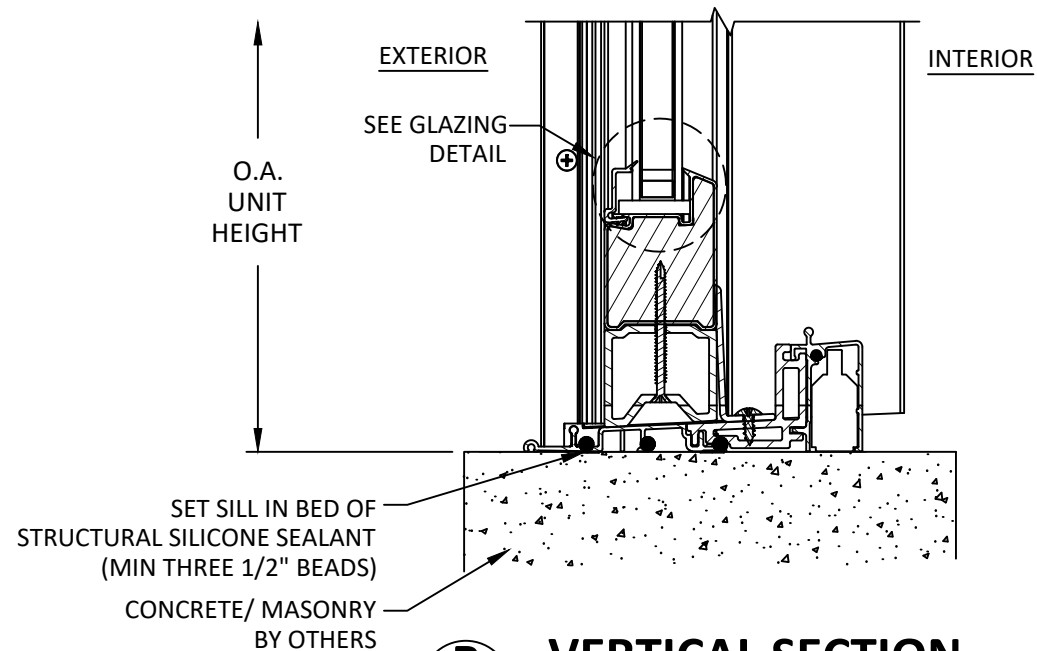
3

OF 7

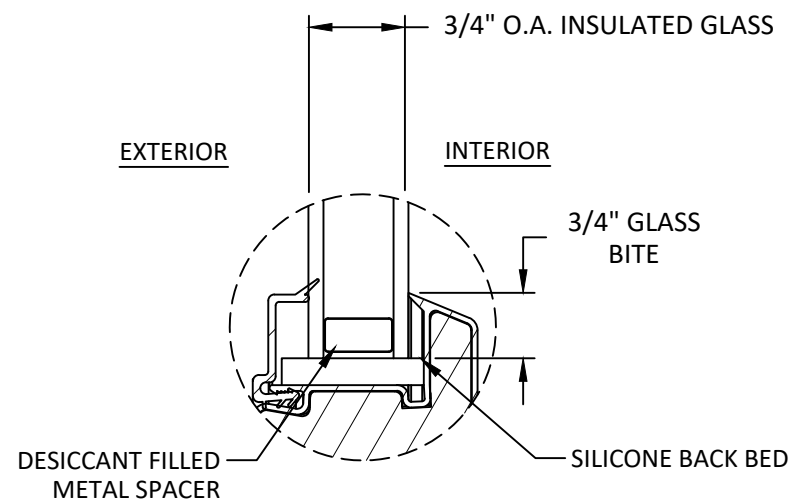
s:\projects\andersen windows\cc-23-0347 - fbc 2023 code change (8th edition)\dwgs\114429\awd191.dwg 6/8/2023 2:32 PM



A
4 **VERTICAL SECTION**
HEAD - METAL SUBSTRATE
THROUGH FRAME



B
4 **VERTICAL SECTION**
SILL - CONCRETE



GLAZING DETAIL 1

- NOTE:
1. ALL GLAZING SHALL MEET ASTM 3100 REQUIREMENTS AND SAFETY GLAZING REQUIREMENTS AS PER CH 24 OF THE FBC.
 2. SETTING BLOCK DUROMETER HARDNESS OF 70-90 (SHORE A) AS REFERENCED IN CHAPTER 24.
 3. SETTING BLOCKS TO BE LOCATED AT 1/4 SPAN LENGTH FOR GLASS WIDER THAN 36" AS PER CHAPTER 24.
 4. D.L.O. MAY NOT EXCEED MAX DIMENSIONS SHOWN IN ELEVATIONS.



100 FOURTH AVE NORTH
BAYPORT, MN 55003-1096
PH: (651) 264-5150 FX: (651) 264-5485

TITLE: 200 SERIES PERMA-SHIELD
GLIDING PATIO DOOR
(NON-HVHZ)/(NON-IMPACT)

VERTICAL SECTIONS & GLAZING DETAIL

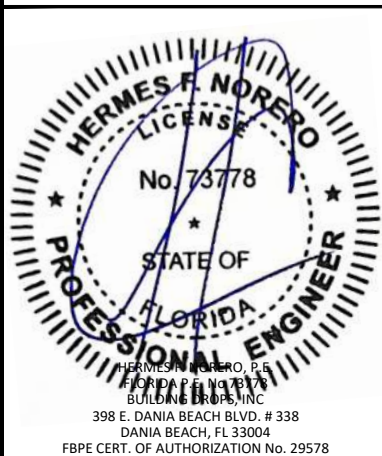
PREPARED BY: BUILDING DROPS, INC.

398 E. DANIA BEACH BLVD., STE. 338
DANIA BEACH, FL 33004
PH: (954) 399-8478
FAX: (954) 744-4738
WEB: www.buildingdrops.com



REMARKS	BY	DATE
7TH FBC CODE CHANGE	SR	3.18.20
8TH FBC CODE CHANGE	SH	5.24.23

THE INSTALLATION DETAILS DESCRIBED HEREIN ARE GENERIC AND MAY NOT REFLECT ACTUAL CONDITIONS FOR A SPECIFIC SITE. IF SITE CONDITIONS CAUSE INSTALLATION TO DEVIATE FROM THE REQUIREMENTS DETAILED HEREIN, A LICENSED ENGINEER OR ARCHITECT SHALL PREPARE SITE SPECIFIC DOCUMENTS FOR USE WITH THIS DOCUMENT



FL #:

FL14429

DATE: **10.16.17**

DWG. BY:
SM

CHK. BY:
HFN

SCALE: **NTS**

DWG. #: **AWD191**

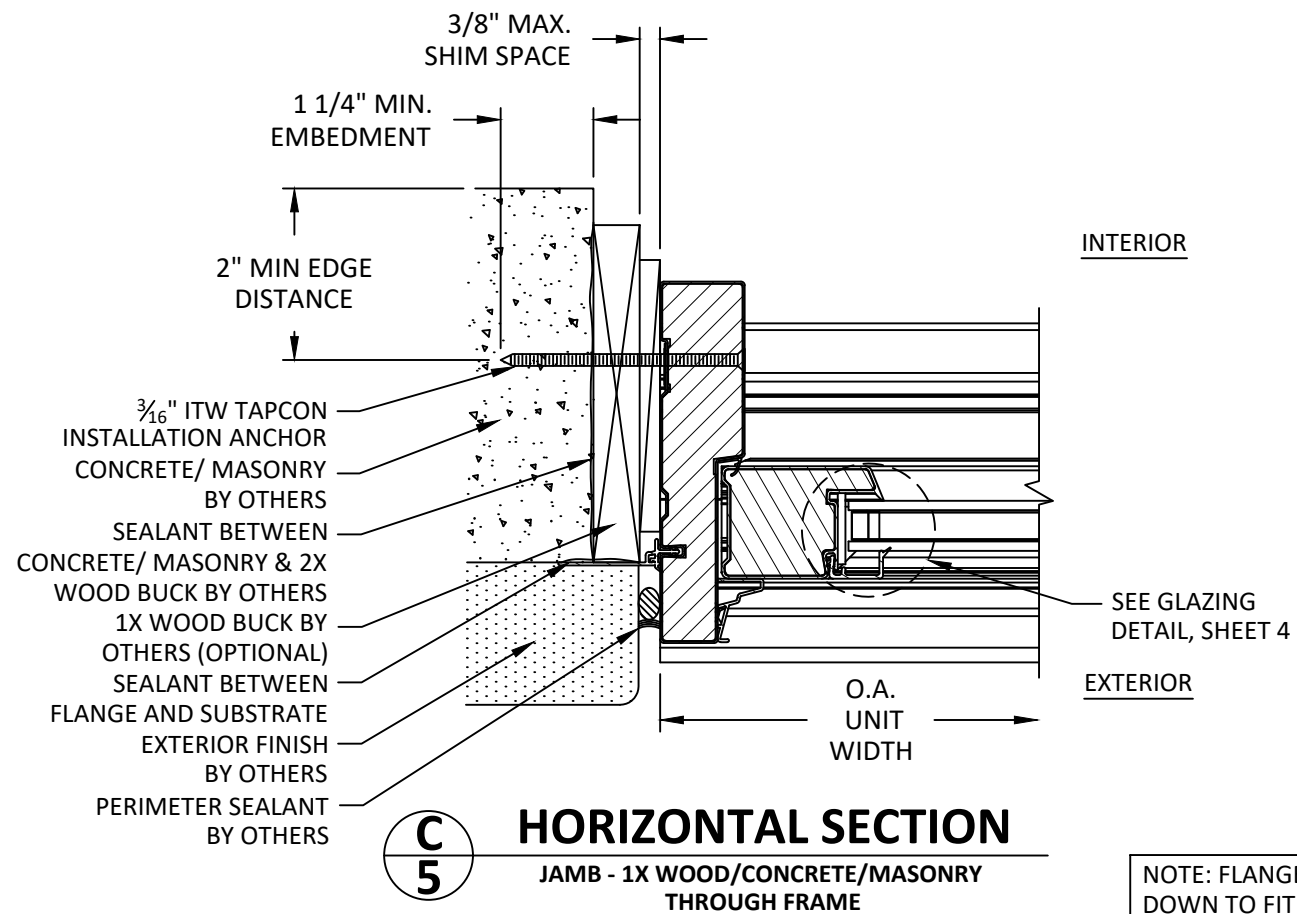
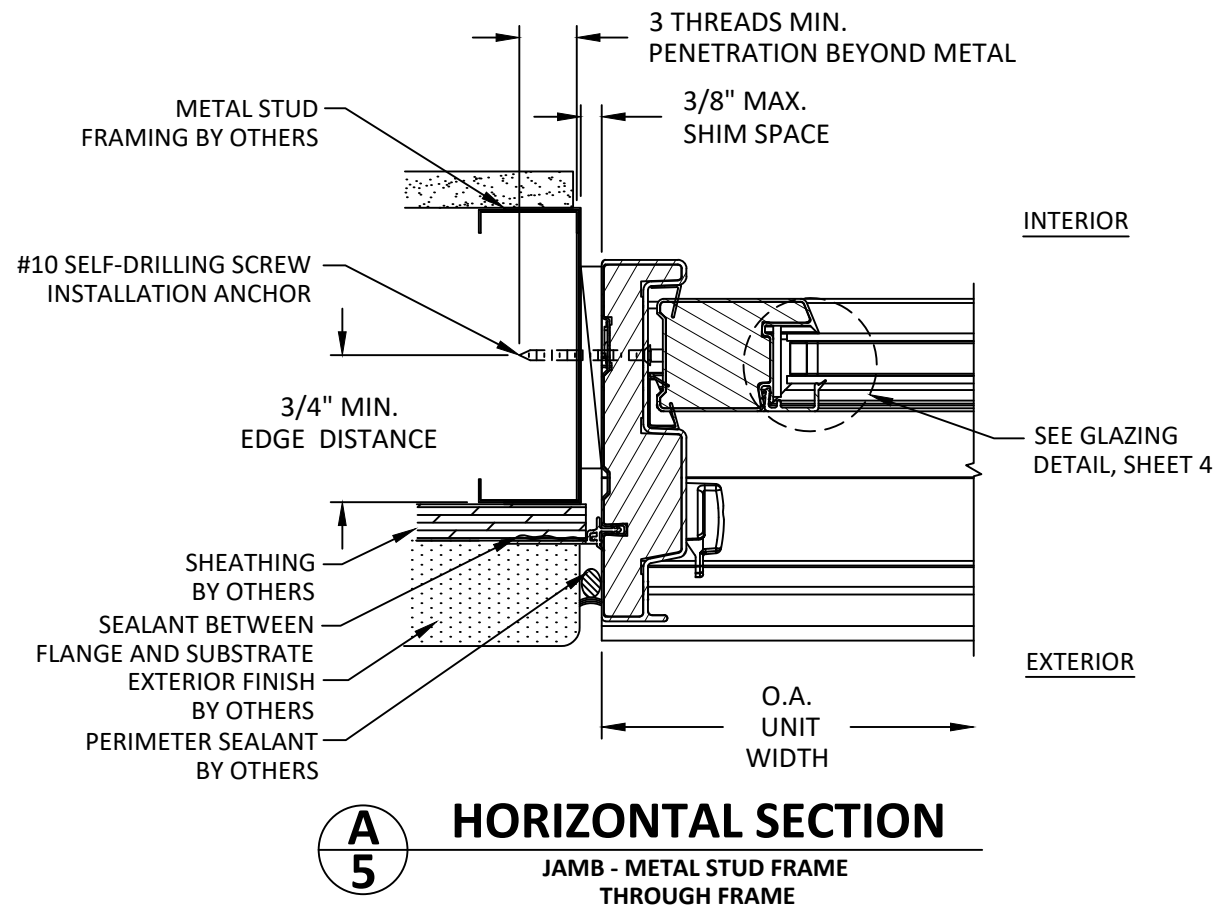
SHEET:

4

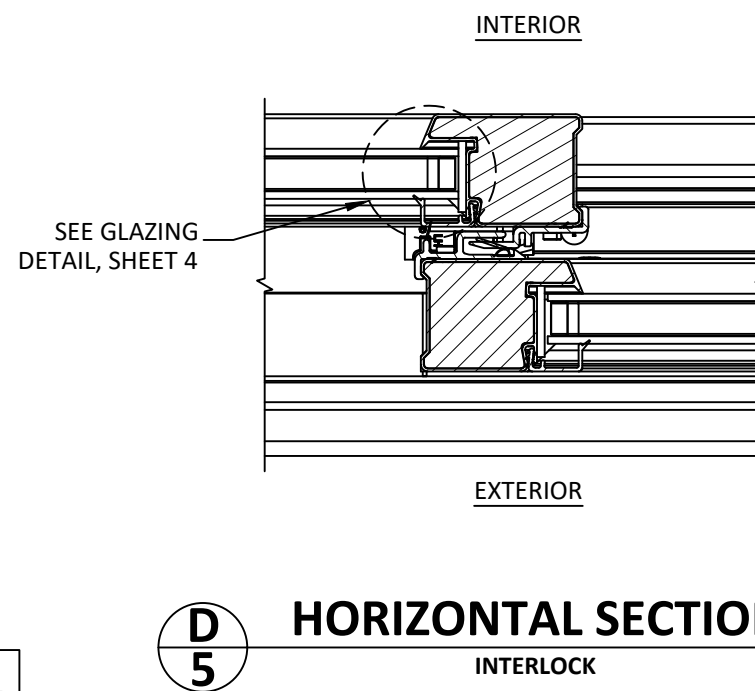
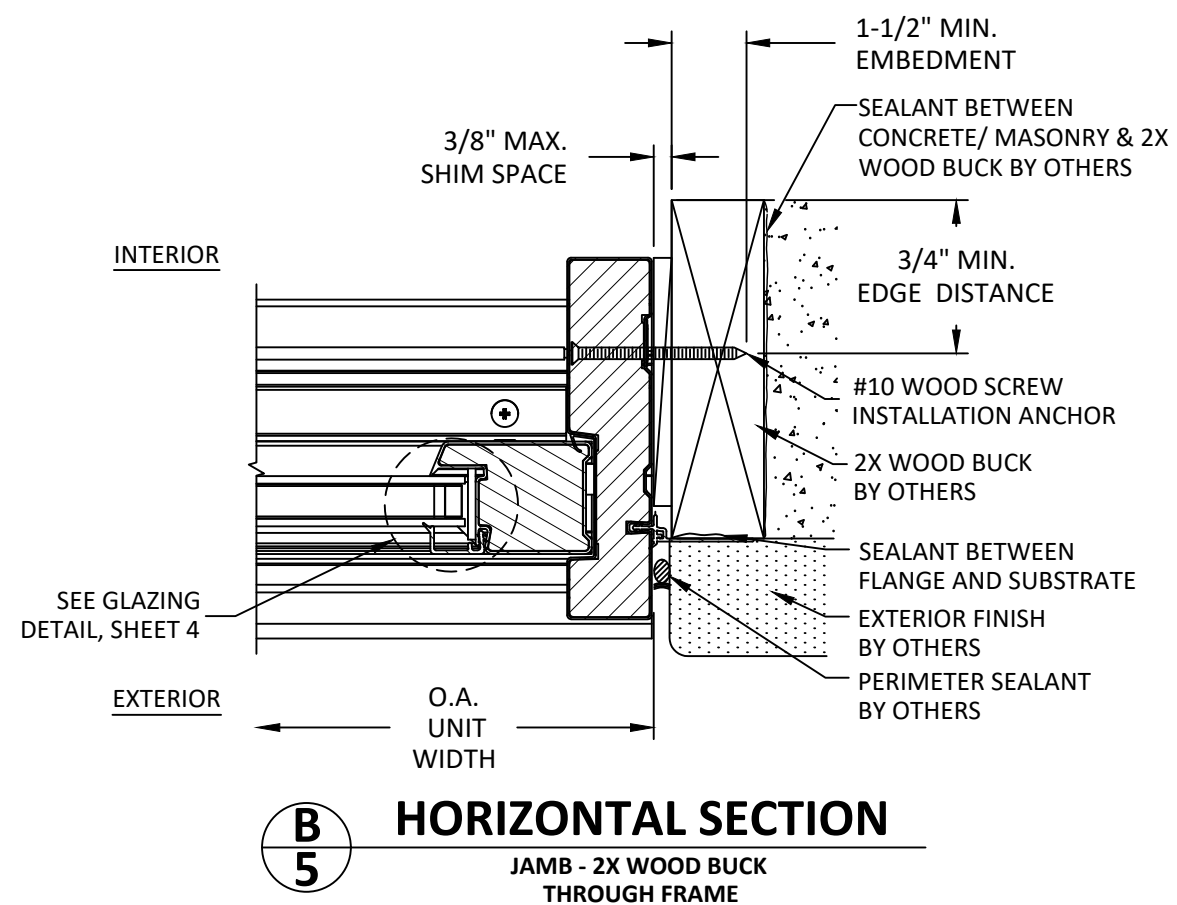
OF 7

6/8/2023 2:32 PM

s:\projects\andersen windows\cc-23-0347 - fbc 2023 code change (8th edition)\dwgs\114429\awd191.dwg



NOTE: FLANGE MAY BE TRIMMED/CUT
DOWN TO FIT 1X BUCK OR REMOVED FOR
DIRECT TO MASONRY INSTALLATION.



ANDERSEN
WINDOWS & DOORS

100 FOURTH AVE NORTH
BAYPORT, MN 55003-1096

PH: (651) 264-5150 FX: (651) 264-5485

TITLE: 200 SERIES PERMA-SHIELD
GLIDING PATIO DOOR
(NON-HVHZ)/(NON-IMPACT)

HORIZONTAL SECTIONS

PREPARED BY:

BUILDING DROPS, INC.

398 E. DANIA BEACH BLVD., STE. 338
DANIA BEACH, FL 33004

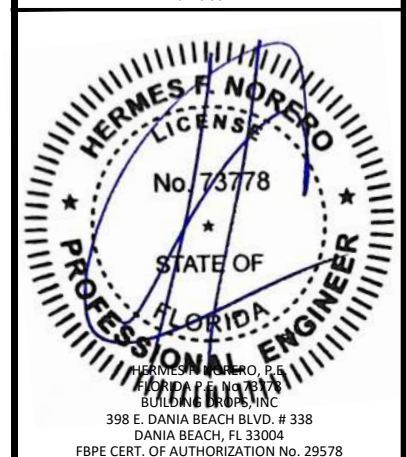
PH: (954) 399-8478
FAX: (954) 744-4738

WEB: www.buildingdrops.com



REMARKS	BY	DATE
7TH FBC CODE CHANGE	SR	3.18.20
8TH FBC CODE CHANGE	SH	5.24.23

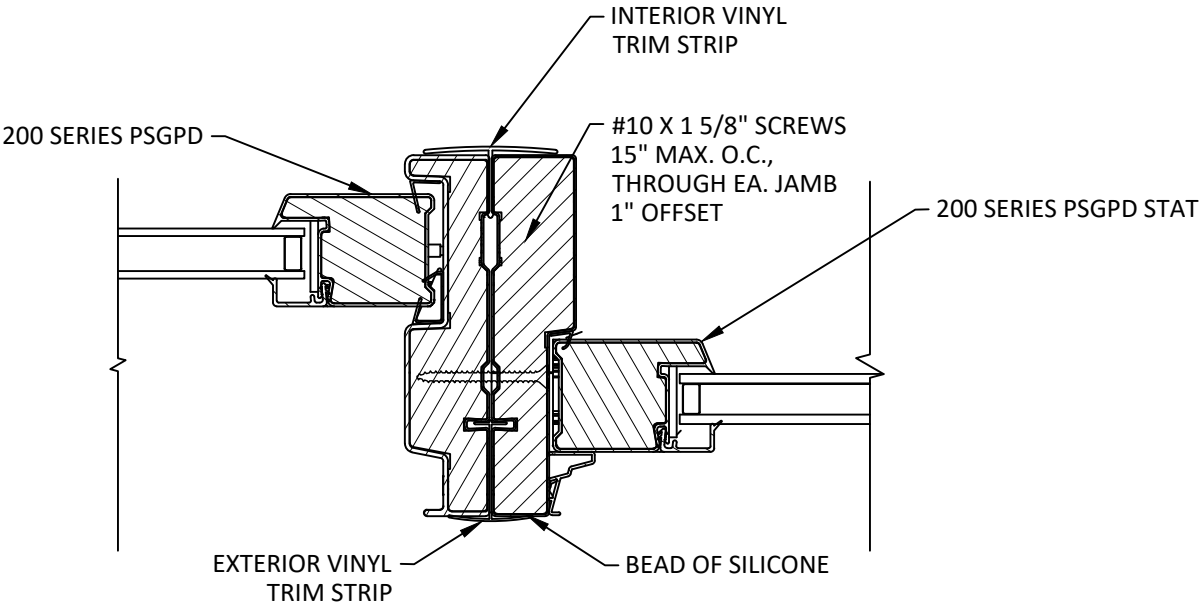
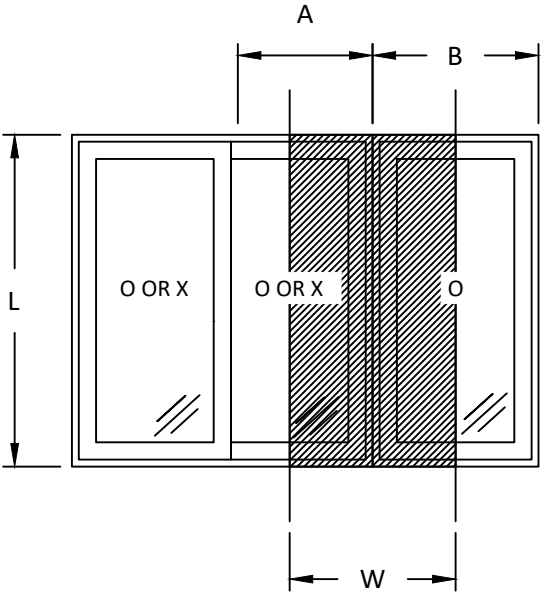
THE INSTALLATION DETAILS DESCRIBED HEREIN
ARE GENERIC AND MAY NOT REFLECT ACTUAL CONDITIONS
FOR A SPECIFIC SITE. IF SITE CONDITIONS CAUSE
INSTALLATION TO DEVIATE FROM THE REQUIREMENTS
DETAILED HEREIN, A LICENSED ENGINEER OR ARCHITECT
SHALL PREPARE SITE SPECIFIC DOCUMENTS FOR USE WITH
THIS DOCUMENT



FL #:	FL14429
DATE:	10.16.17
DWG. BY:	CHK. BY:
SM	HFN
SCALE:	NTS
DWG. #:	AWD191
SHEET:	5

L - MULL LENGTH (IN)	W - TRIBUTARY WIDTH (IN)										
	18.0	21.0	24.0	27.0	30.0	33.0	36.0	39.0	42.0	45.0	48.0
36.0	50.0	50.0	50.0	50.0	50.0	50.0	50.0	50.0	50.0	50.0	50.0
42.0	50.0	50.0	50.0	50.0	50.0	50.0	50.0	50.0	50.0	50.0	50.0
48.0	50.0	50.0	50.0	50.0	50.0	50.0	50.0	50.0	50.0	50.0	50.0
54.0	50.0	50.0	50.0	50.0	50.0	50.0	50.0	50.0	50.0	50.0	50.0
60.0	50.0	50.0	50.0	50.0	50.0	50.0	50.0	50.0	50.0	50.0	50.0
66.0	50.0	50.0	50.0	50.0	50.0	50.0	50.0	49.8	47.8	46.1	44.8
72.0	50.0	50.0	50.0	50.0	50.0	49.3	46.5	44.1	42.2	40.6	39.2
78.0	50.0	50.0	50.0	50.0	47.8	44.5	41.8	39.6	37.7	36.2	34.8
84.0	50.0	50.0	50.0	47.5	43.6	40.6	38.0	35.9	34.1	32.6	31.4
90.0	50.0	50.0	48.3	43.7	40.1	37.2	34.8	32.9	31.2	29.7	28.5
96.0	50.0	50.0	44.8	40.6	37.2	34.4	32.2	30.3	28.7	27.3	26.1

- NOTE:
- MULLION CHART APPLIES TO MULLION ASSEMBLIES, SEE TYP. DETAIL A/6, WHEN USED TO MULL DOORS IN CONFIGURATIONS SHOWN IN TYP. ELEVATION A AT RIGHT (2 PANEL XO ONLY).
 - DESIGN PRESSURE VALUES ARE POSITIVE AND NEGATIVE IN PSF.
 - MAXIMUM DEFLECTION HAS BEEN LIMITED TO L/175.
 - DESIGN PRESSURE OF ASSEMBLY IS LIMITED TO THE LESSER DESIGN PRESSURE OF THE JAMB-TO-JAMB WOOD MULLION OR THE INDIVIDUAL DOOR UNIT OF INSTALLATION.
 - MULLION CHART ABOVE APPLIES TO MULLED ASSEMBLIES CONSISTING OF 200 SERIES PERMA-SHIELD GLIDING PATIO DOOR ACT-STAT UNITS AND STAT UNITS.
 - ADJACENT DOORS SHALL BE FASTENED TO THE ROUGH OPENING WITH ADDITIONAL ANCHORS IN ACCORDANCE WITH DETAILS A/7 & B/7, SHEET 7.



A
6 **HORIZONTAL SECTION**
PSGPD STAT - PSGPD



100 FOURTH AVE NORTH
BAYPORT, MN 55003-1096
PH: (651) 264-5150 FX: (651) 264-5485

TITLE: 200 SERIES PERMA-SHIELD
GLIDING PATIO DOOR
(NON-HVHZ)/(NON-IMPACT)

SIDELITE MULLIONS

PREPARED BY:

BUILDING DROPS, INC.

398 E. DANIA BEACH BLVD., STE. 338

DANIA BEACH, FL 33004

PH: (954) 399-8478

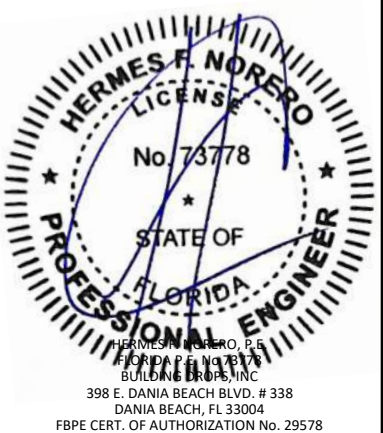
FAX: (954) 744-4738

WEB: www.buildingdrops.com



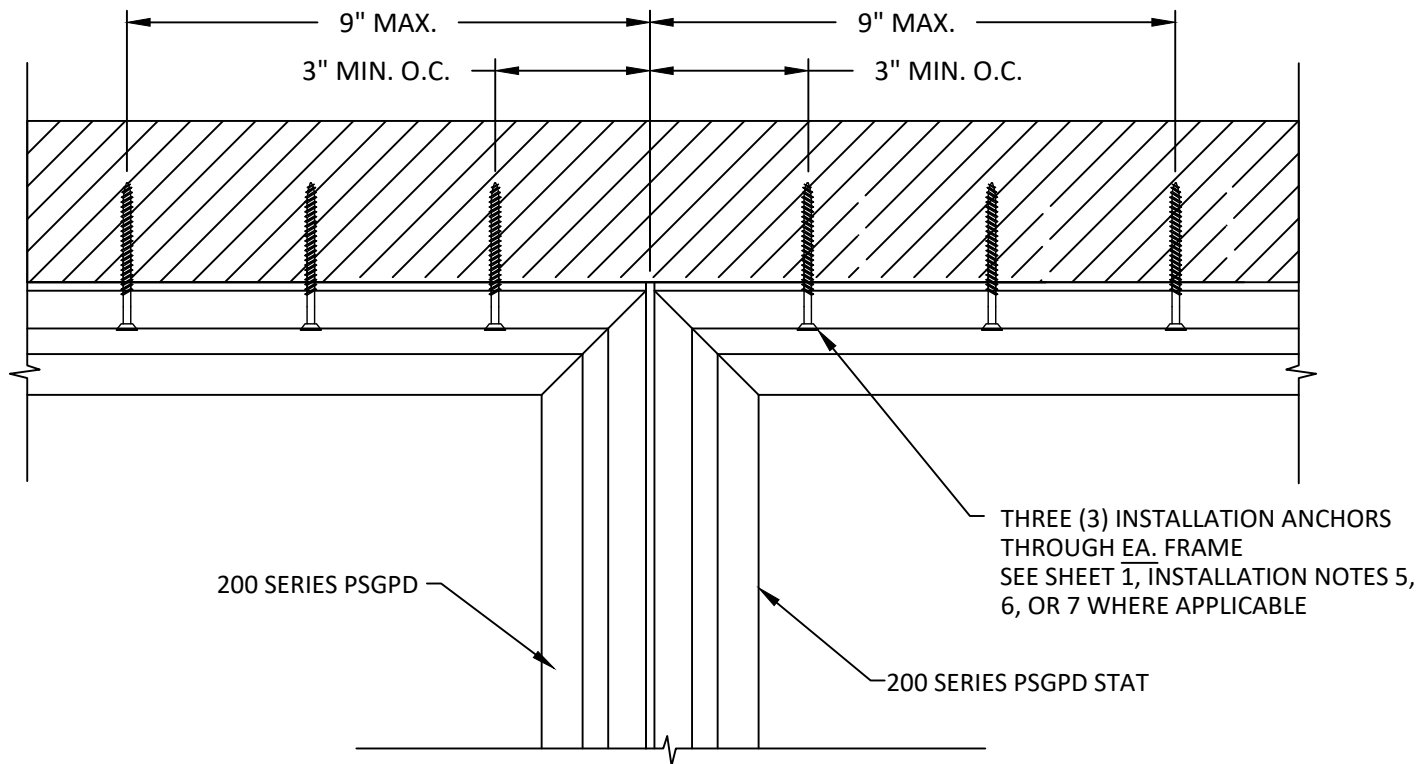
REMARKS	BY	DATE
7TH FBC CODE CHANGE	SR	3.18.20
8TH FBC CODE CHANGE	SH	5.24.23

THE INSTALLATION DETAILS DESCRIBED HEREIN ARE GENERIC AND MAY NOT REFLECT ACTUAL CONDITIONS FOR A SPECIFIC SITE. IF SITE CONDITIONS CAUSE INSTALLATION TO DEVIATE FROM THE REQUIREMENTS DETAILED HEREIN, A LICENSED ENGINEER OR ARCHITECT SHALL PREPARE SITE SPECIFIC DOCUMENTS FOR USE WITH THIS DOCUMENT



FL #:	FL14429
DATE:	10.16.17
DWG. BY:	CHK. BY:
SM	HFN
SCALE:	NTS
DWG. #:	AWD191
SHEET:	6

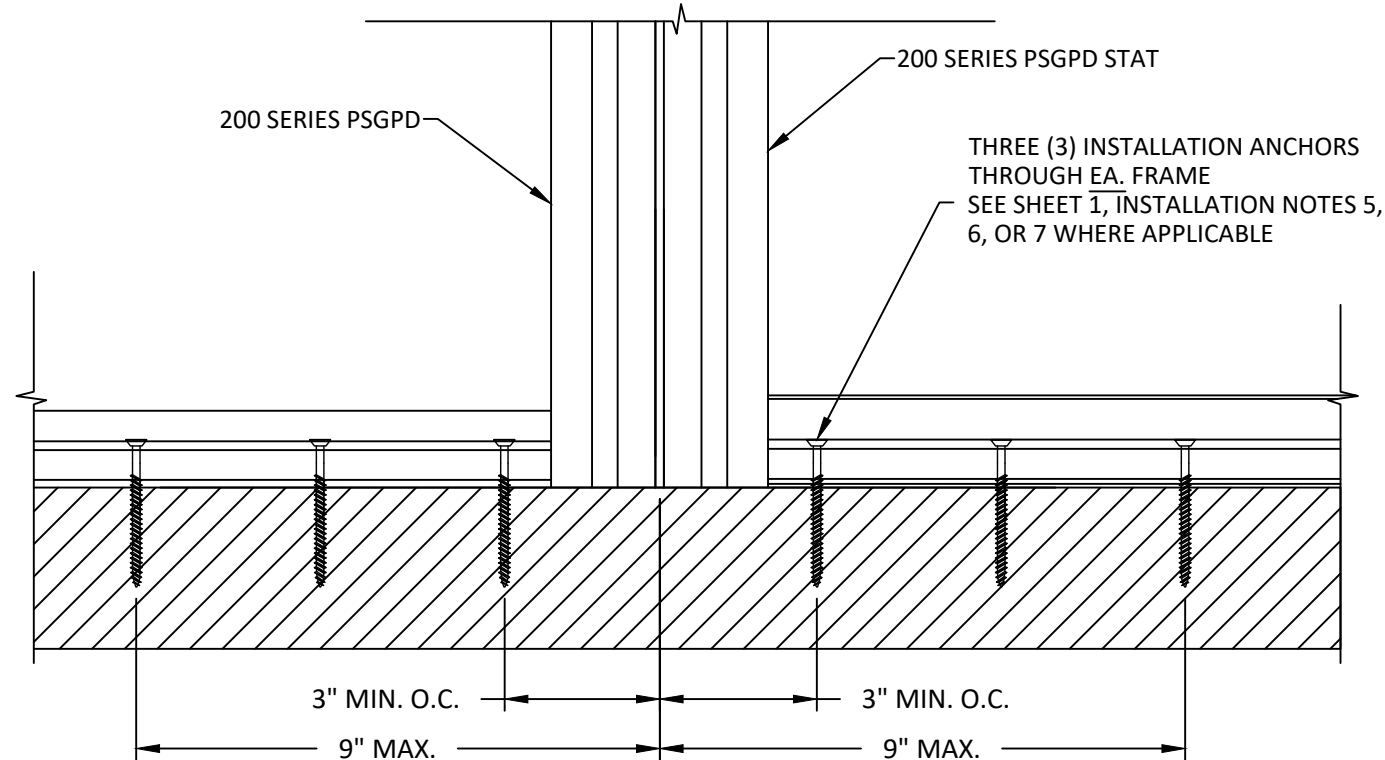
s:\projects\andersen windows\cc-23-0347 - fbc 2023 code change (8th edition)\dwgs\114429\awd191.dwg 6/8/2023 2:32 PM



A
7

EXTERIOR VIEW

MULLION ANCHOR DETAIL - HEAD THROUGH FRAME - TYP.



B
7

EXTERIOR VIEW

MULLION ANCHOR DETAIL - SILL THROUGH FRAME - TYP.



100 FOURTH AVE NORTH
BAYPORT, MN 55003-1096
PH: (651) 264-5150 FX: (651) 264-5485

TITLE: 200 SERIES PERMA-SHIELD
GLIDING PATIO DOOR
(NON-HVHZ)/(NON-IMPACT)

MULLION ANCHOR DETAILS

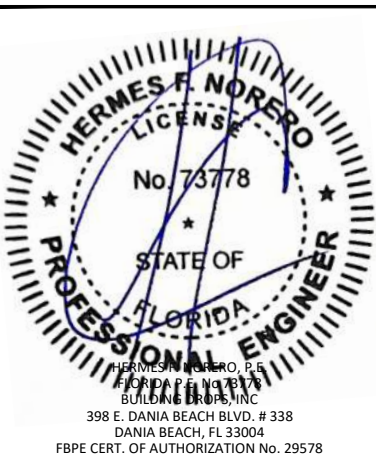
PREPARED BY: BUILDING DROPS, INC.

398 E. DANIA BEACH BLVD., STE. 338
DANIA BEACH, FL 33004
PH: (954) 399-8478
FAX: (954) 744-4738
WEB: www.buildingdrops.com



REMARKS	BY	DATE
7TH FBC CODE CHANGE	SR	3.18.20
8TH FBC CODE CHANGE	SH	5.24.23

THE INSTALLATION DETAILS DESCRIBED HEREIN ARE GENERIC AND MAY NOT REFLECT ACTUAL CONDITIONS FOR A SPECIFIC SITE. IF SITE CONDITIONS CAUSE INSTALLATION TO DEVIATE FROM THE REQUIREMENTS DETAILED HEREIN, A LICENSED ENGINEER OR ARCHITECT SHALL PREPARE SITE SPECIFIC DOCUMENTS FOR USE WITH THIS DOCUMENT



FL #: **FL14429**

DATE: **10.16.17**

DWG. BY: **SM** CHK. BY: **HFN**

SCALE: **NTS**

DWG. #: **AWD191**

SHEET:

7

OF 7