

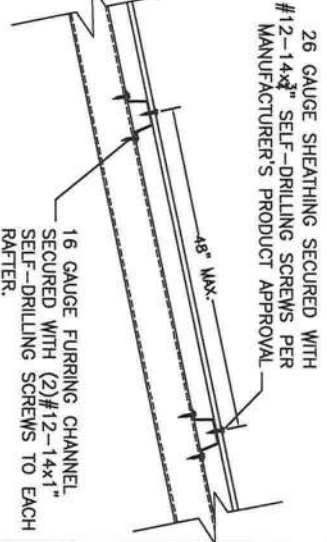
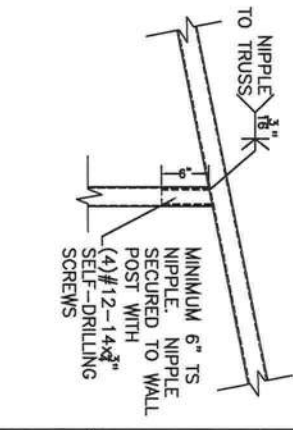
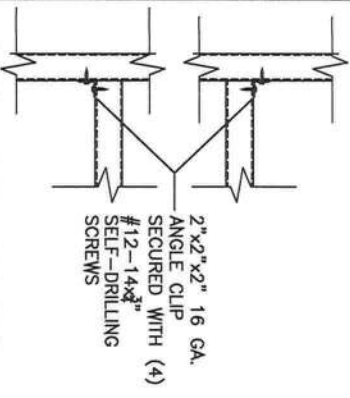
POST TO BASE RAIL
CONNECTION

END POST TO BASE RAIL
CONNECTION

INTERMEDIATE POST TO
HEADER/BASE RAIL/OR
WINDOW RAIL DETAIL

HEADER CONNECTION
DETAIL OPTION 1

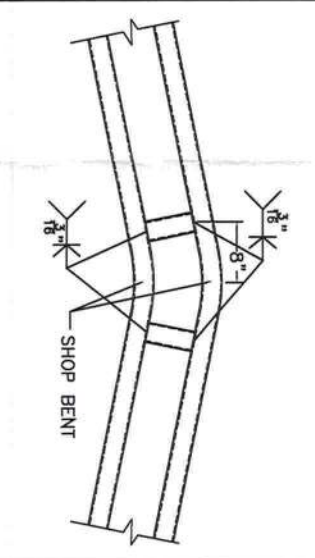
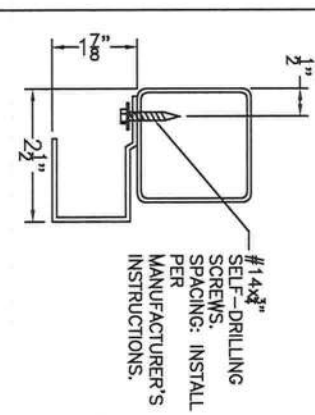
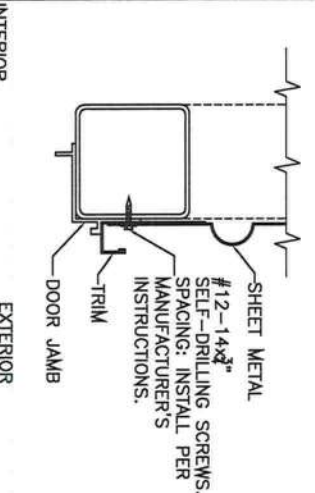
HEADER CONNECTION DETAIL
OPTION 2



NON-STRUCTURAL
HEADER OR WINDOW
RAIL TO POST DETAIL

POST TO TRUSS
CONNECTION

WALL/ROOF PANEL CONNECTION
VERTICAL SHEATHING OPTION



DOOR FRAME TO POST
CONNECTION

ROLL-UP DOOR TO
POST CONNECTION

BOX EAVE RAFTER TO
POST CONNECTION DETAIL

TRUSSED RAFTER
CONNECTION DETAIL

Enclosed Design Pressures		140 mph		
Zone 'a' dim. = 3ft		V _{ult} Wind Speed		
Roof		Wall		
1	2	3	4	5
9.6	12.6	12.6	12.6	15.2
-9.8	-45.6	-54.2	-14.1	-19.1

APPROVED PRODUCTS		APPROVAL NO.
ROOF SHEATHING	CARPORIS ANYWHERE HAMPTON RIB ROOF PANEL	FL27402.1
WALL SHEATHING	CARPORIS ANYWHERE HAMPTON RIB WALL PANEL	FL27403.1
SWINGING DOOR	ELIXER DOOR AND METAL COMPANY 407 STEEL DOOR	FL17996.5
ROLL-UP DOOR	JANUS INTERNATIONAL CORPORATION SERIES 3100	FL21450.3
WINDOW	CGI WINDOWS AND DOORS MODEL SH-4100A	FL23358.2

TITLE: DETAILS

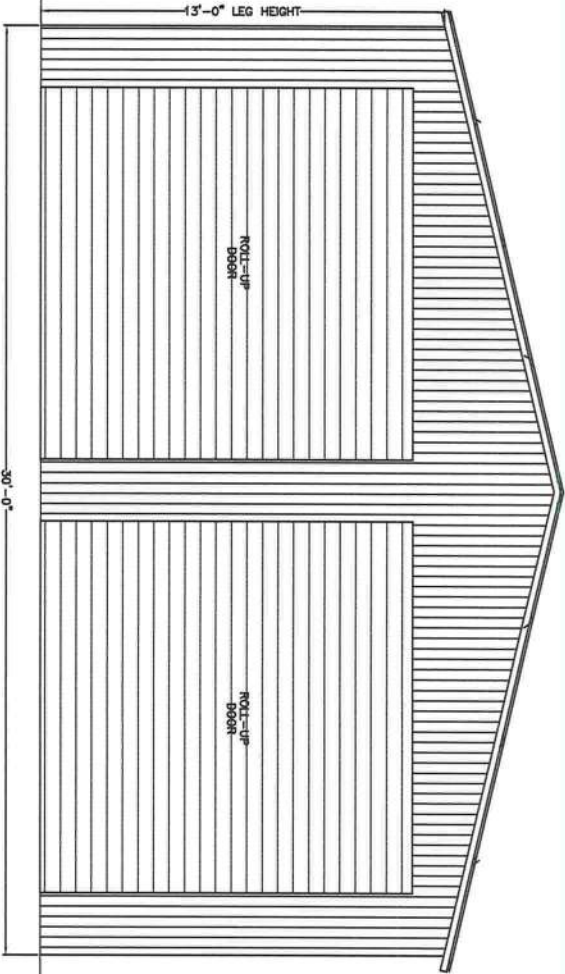
Sheet: 4 OF 4

Matthew T. Baldwin P.E.
Florida License #64608

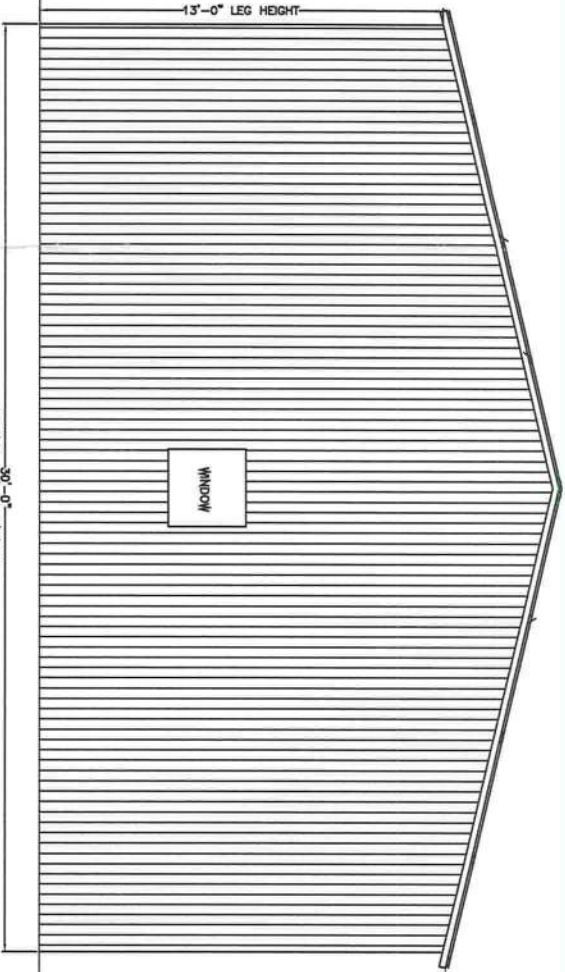
12/13/24

REV	DESCRIPTION	DATE
1	ADDRESS	12/12/24

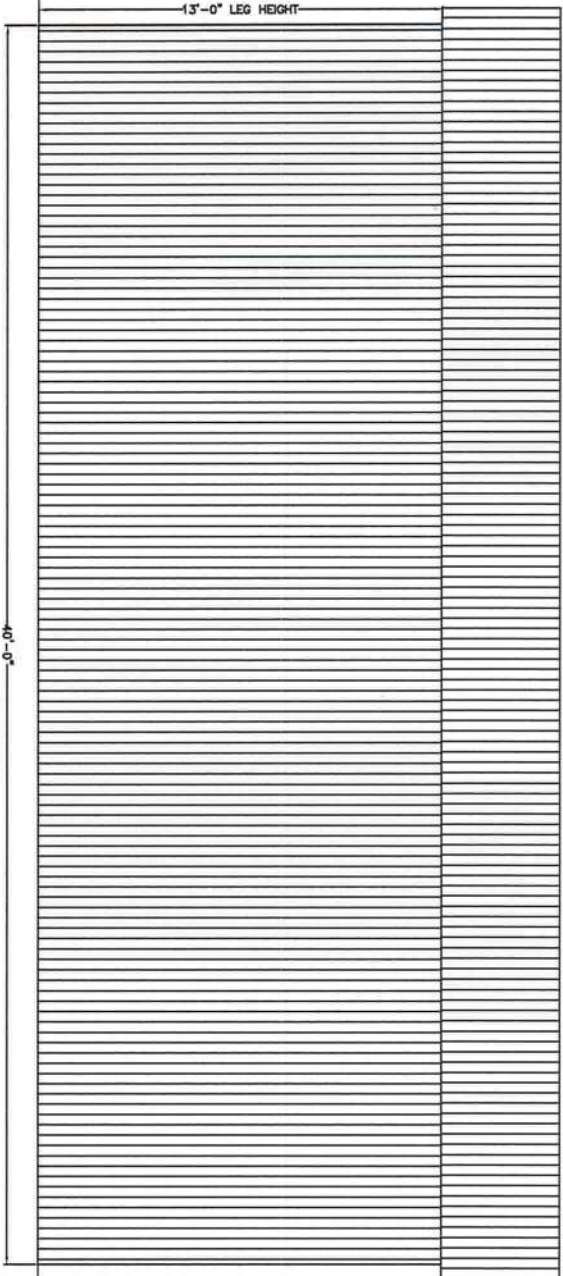
DRAWN BY:	MTB
DATE:	12/7/24
LOCATION:	Pct#27-65-16-03951-117, Columbic
SIZE:	40' L X 30' W X 13' H



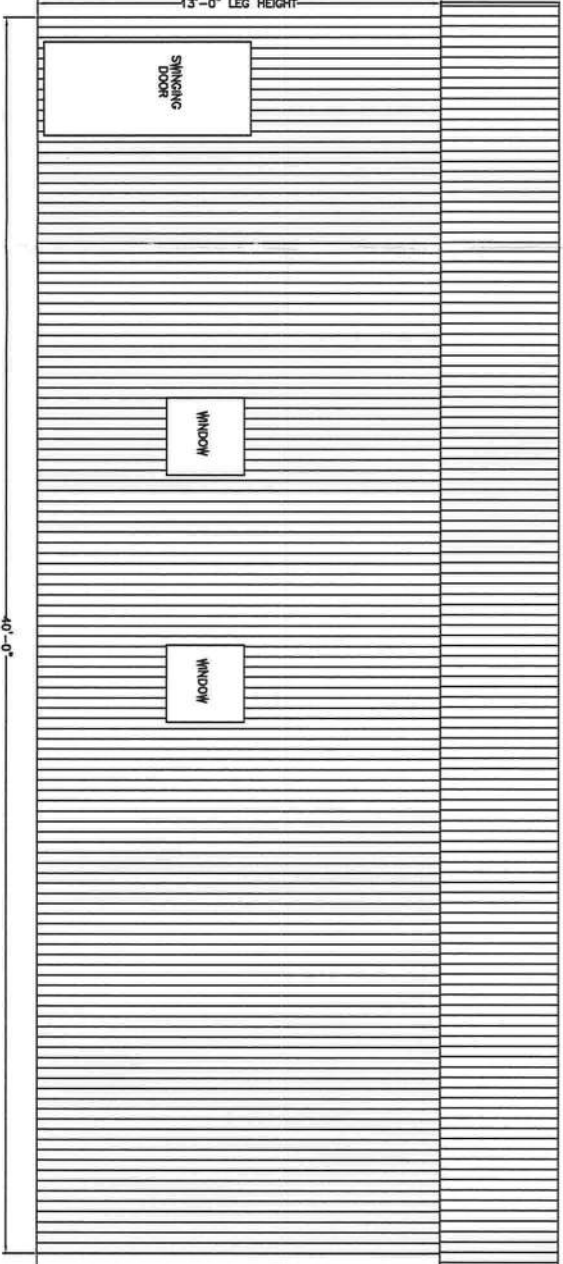
FRONT END WALL



REAR END WALL



LEFT SIDE WALL



RIGHT SIDE WALL

CODE INFORMATION	
CODE VERSION	FBC 2023 8th Ed. ASCE-7-22
MANUFACTURER	
BUILDING TYPE	UTILITY STRUCTURE
CONSTRUCTION TYPE	II-B
RISK CATEGORY	I
FIRE PROTECTION	NONE
FIRE SUPPRESSION SYSTEM	NONE
OCCUPANCY	UTILITY, U
WIND SPEED	Vult-140mph
EXPOSURE	B
ENCLOSURE	ENCLOSED
INTERNAL PRESSURE COEFF.	+/- 0.18
IMPORTANCE FACTOR	1.0
ROOF DEAD LOAD	10PSF
ROOF LIVE LOAD	20PSF OR 300lb
FLOOR DEAD LOAD	10PSF
FLOOR LIVE LOAD	50PSF
RATING OF WALLS,FLOOR,ROOF	N/A
MODULES PER BUILDING	1
HURRICANE PROTECTION USAGE	NO
HURRICANE SHELTER USAGE	NO
SQUARE FOOTAGE	1,200 SQ. FT.

REVISIONS	
REV	DESCRIPTION
1	ADDRESS

DRAWN BY:	MTB
DATE:	12/7/24
LOCATION:	Pct#27-6S-16-03951-117, Columbia
SIZE:	40'L X 30'W X 13'H

SIDE & END VIEWS

Matthew T. Baldwin P.E.
Florida License #64608

12/13/24

CODE INFORMATION	
CODE VERSION	FBC 2023 8th E ASCE-7-22
MANUFACTURER	
BUILDING TYPE	UTILITY STRUCTURE
CONSTRUCTION TYPE	II-B
RISK CATEGORY	I
FIRE PROTECTION	NONE
FIRE SUPPRESSION SYSTEM	NONE
OCCUPANCY	UTILITY, U
WIND SPEED	Vail-140mph
EXPOSURE	B
ENCLOSURE	ENCLOSED
INTERNAL PRESSURE COEFF.	+/- 0.18
IMPORTANCE FACTOR	1.0
ROOF DEAD LOAD	10PSF
ROOF LIVE LOAD	20PSF OR 300lb
FLOOR DEAD LOAD	10PSF
FLOOR LIVE LOAD	50PSF
"R" RATING OF WALLS, FLOOR, ROOF	N/A
MODULES PER BUILDING	1
HURRICANE PROTECTION USAGE	NO
HURRICANE SHELTER USAGE	NO
SQUARE FOOTAGE	1,200 SQ. FT.

REVISIONS		
REV	DESCRIPTION	DATE
1	ADDRESS	12/12/24

DRYARK BY:	MTB
DATE:	12/7/24
LOCATION:	
Plot#	27-6S-16-03951-117, Columbian
SIZE:	40'L X 30'W X 13'H

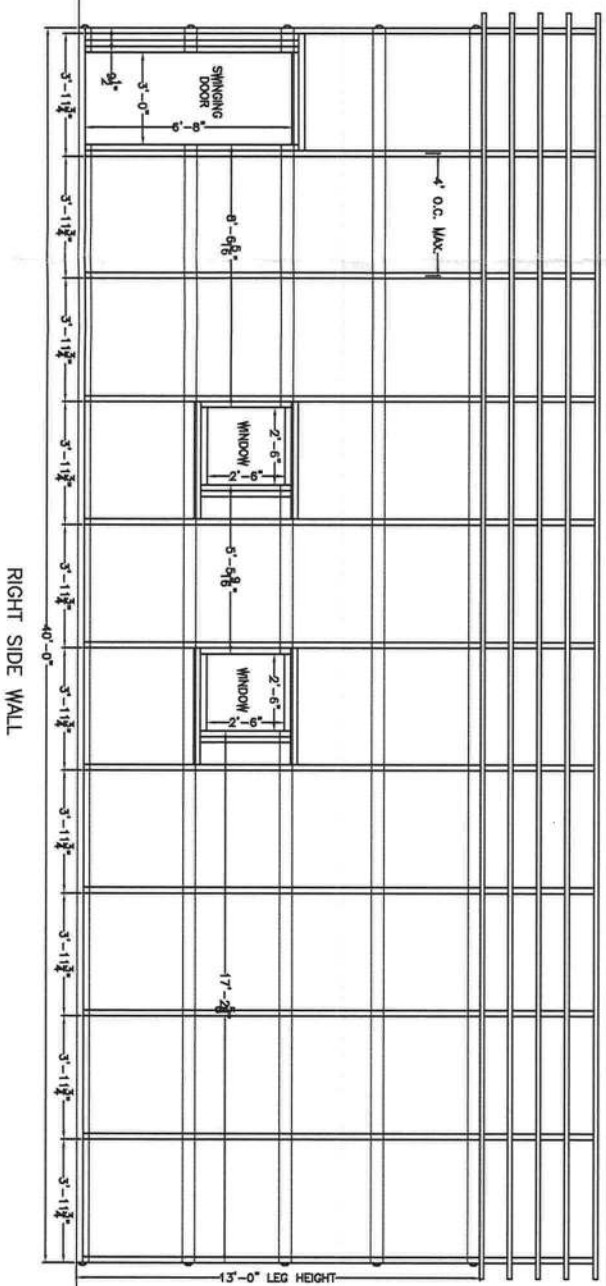
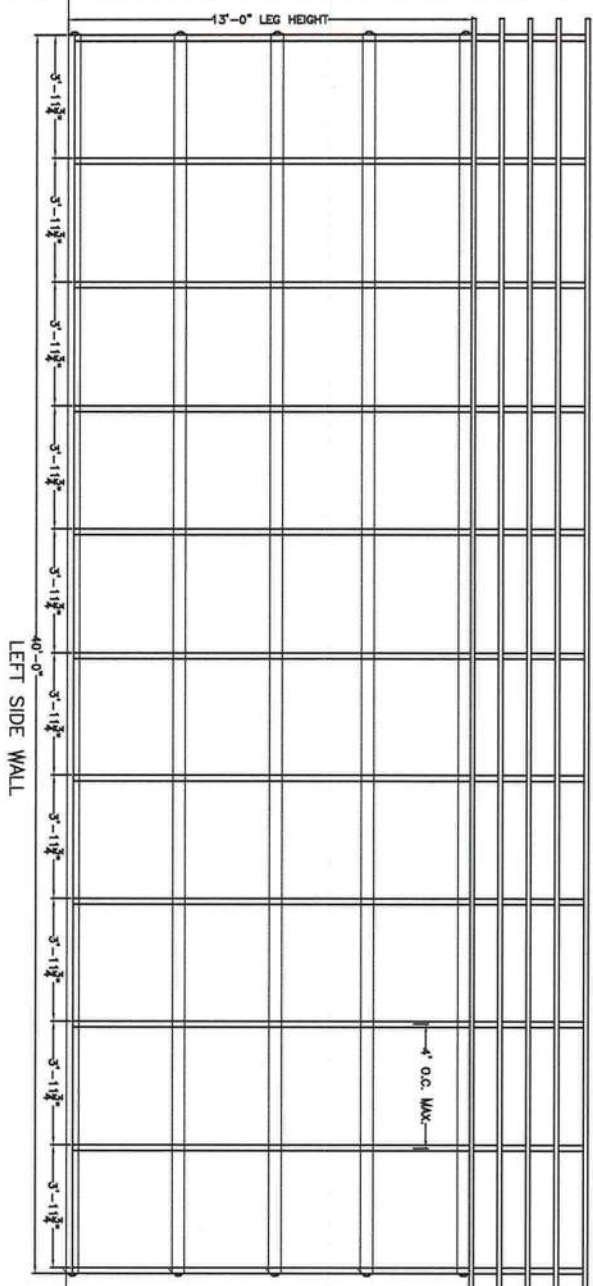
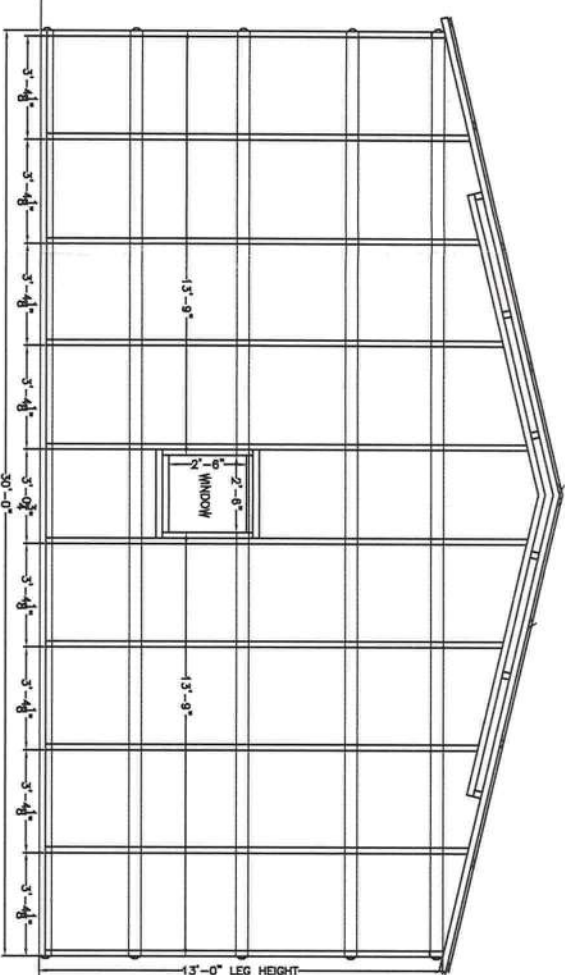
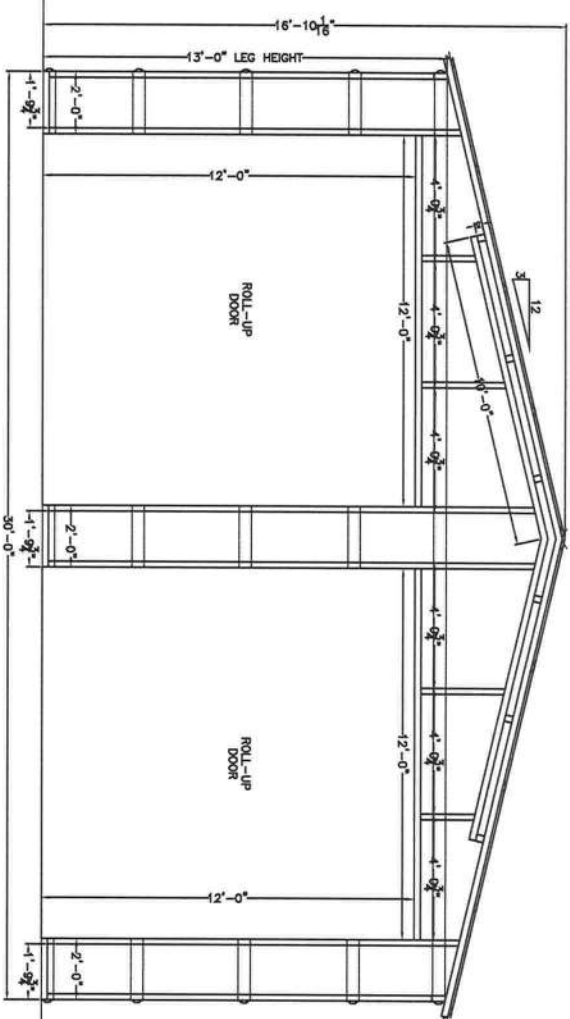
12/13/24

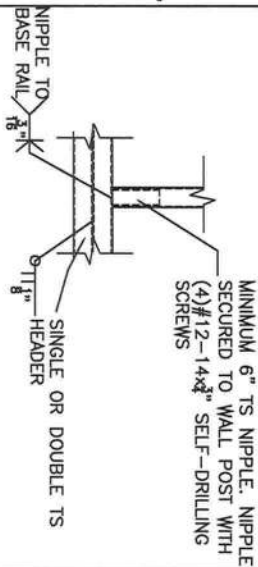
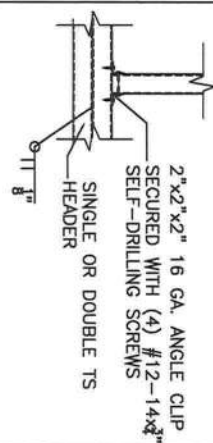
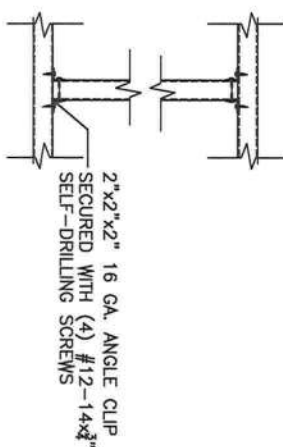
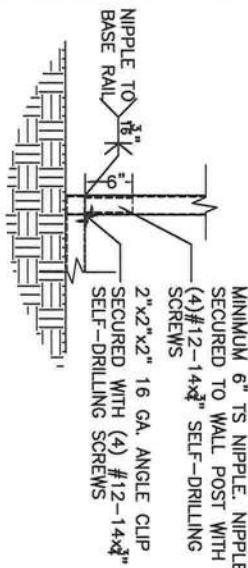
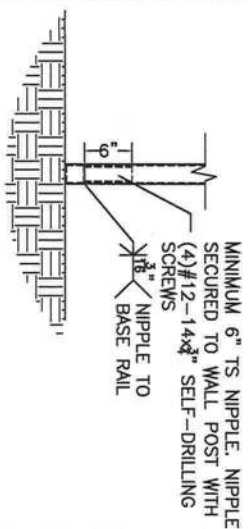
Matthew T. Baldwin P.E.
Florida License #64608

Sheet: 2 OF 4

TITLE:

SIDE & END FRAMING VIEWS





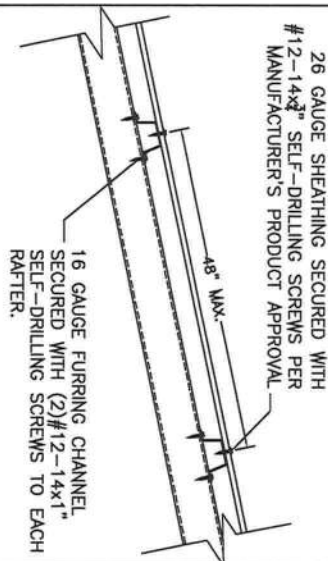
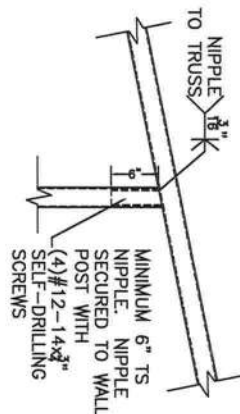
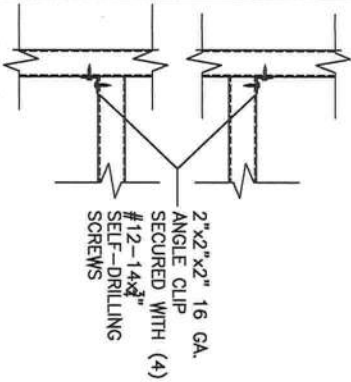
POST TO BASE RAIL
CONNECTION

END POST TO BASE RAIL
CONNECTION

INTERMEDIATE POST TO
HEADER/BASE RAIL/OR
WINDOW RAIL DETAIL

HEADER CONNECTION
DETAIL OPTION 1

HEADER CONNECTION DETAIL
OPTION 2



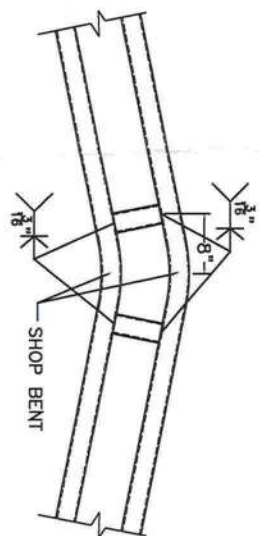
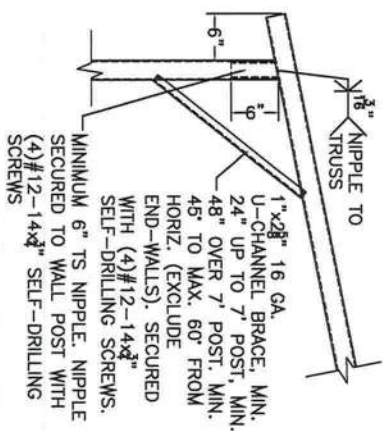
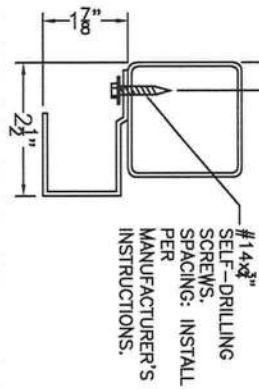
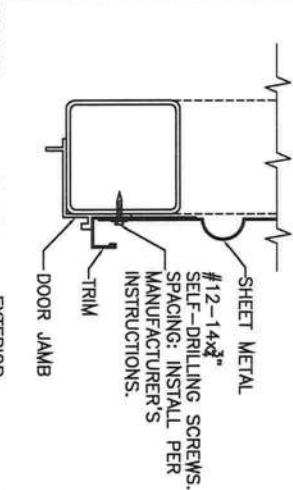
NON-STRUCTURAL
HEADER OR WINDOW
RAIL TO POST DETAIL

POST TO TRUSS
CONNECTION

WALL/ROOF PANEL CONNECTION
VERTICAL SHEATHING OPTION

INSTALL PER MANUFACTURERS INSTRUCTIONS

INSTALL PER MANUFACTURERS INSTRUCTIONS



DOOR FRAME TO POST
CONNECTION

ROLL-UP DOOR TO
POST CONNECTION

BOX EAVE RAFTER TO
POST CONNECTION DETAIL

TRUSSED RAFTER
CONNECTION DETAIL

Enclosed		Design Pressures		140 mph	
Zone		'a' dim.= 3ft		V _{ult} Wind Speed	
Roof		3		4	
Wall		12.6		15.2	
1		2		3	
9.6		12.6		12.6	
-9.8		-45.6		-14.1	

APPROVED PRODUCTS		APPROVAL NO.	
ROOF SHEATHING	CARPORIS ANYWHERE HAMPTON RIB ROOF PANEL	FL27402.1	
WALL SHEATHING	CARPORIS ANYWHERE HAMPTON RIB WALL PANEL	FL27403.1	
SWINGING DOOR	ELIXER DOOR AND METAL COMPANY 407 STEEL DOOR	FL17996.5	
ROLL-UP DOOR	JANUS INTERNATIONAL CORPORATION SERIES 3100	FL21450.3	
WINDOW	CGI WINDOWS AND DOORS MODEL SH-4100A	FL23358.2	

TITLE:

DETAILS

Sheet:

4 OF 4

Matthew T. Baldwin P.E.
Florida License #64608

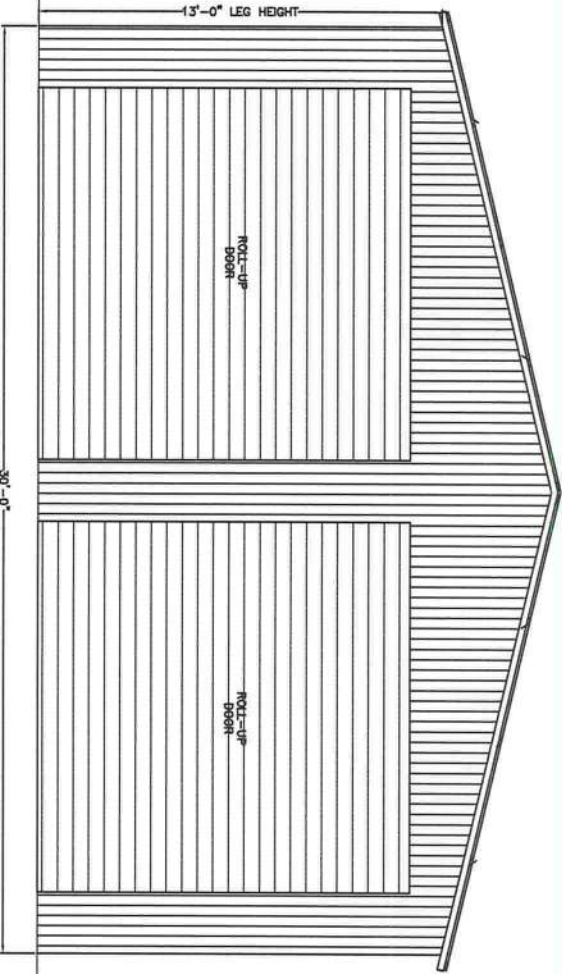
12/13/24

dm

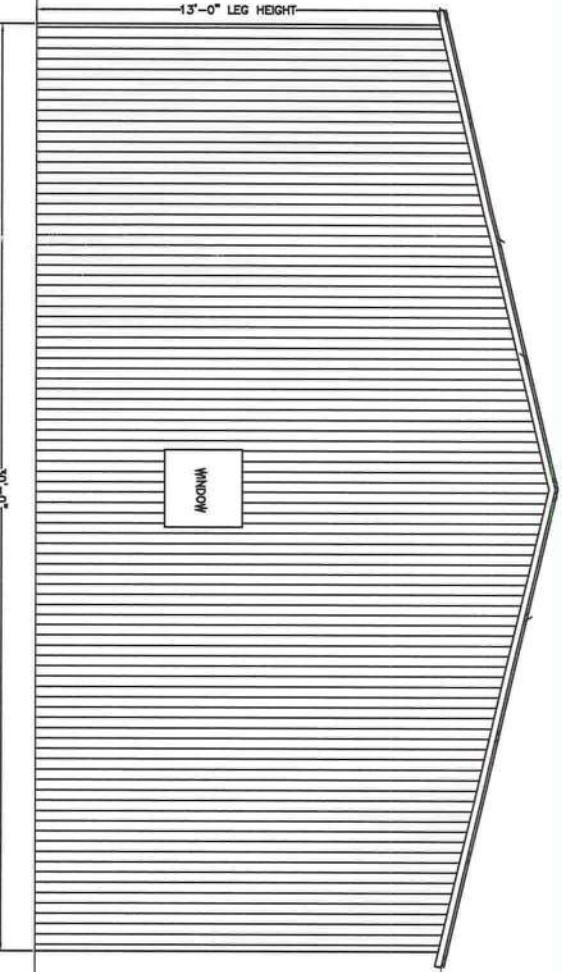
DRAWN BY: MTB
DATE: 12/7/24
PROJECT: 27-65-16-03951-117, Columbia
SIZE: 40' L X 30' W X 13' H

CODE INFORMATION	
CODE VERSION	FBC 2023 8th Ed.
MANUFACTURER	ASCE-7-22
BUILDING TYPE	UTILITY STRUCTURE
CONSTRUCTION TYPE	II-B
RISK CATEGORY	I
FIRE PROTECTION	NONE
FIRE SUPPRESSION SYSTEM	NONE
OCCUPANCY	UTILITY, U
WIND SPEED	V _{ult} -140mph
EXPOSURE	B
INTERNAL PRESSURE COEFF.	+/- 0.18
IMPORTANCE FACTOR	1.0
ROOF DEAD LOAD	10PSF
ROOF LIVE LOAD	20PSF OR 300lb
FLOOR DEAD LOAD	10PSF
FLOOR LIVE LOAD	50PSF
RATING OF WALLS/FLOOR/ROOF N/A	
MODULES PER BUILDING	1
HURRICANE PROTECTION USAGE	NO
HURRICANE SHELTER USAGE	NO
SQUARE FOOTAGE	1,200 SQ. FT.

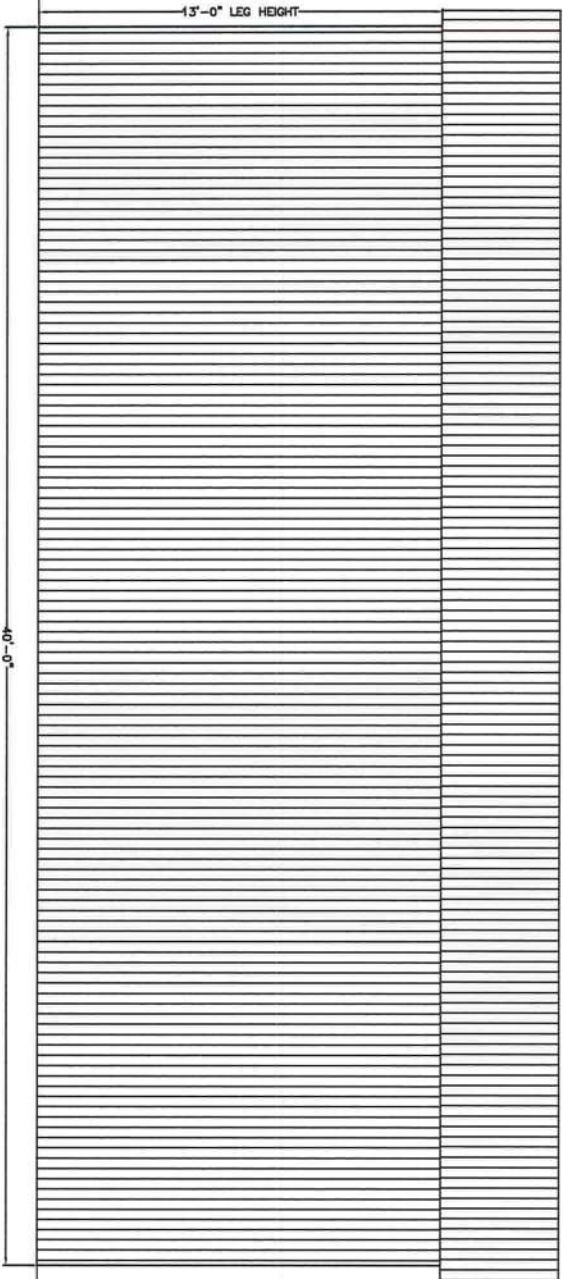
REVISIONS	
REV	DESCRIPTION
1	ADDRESS



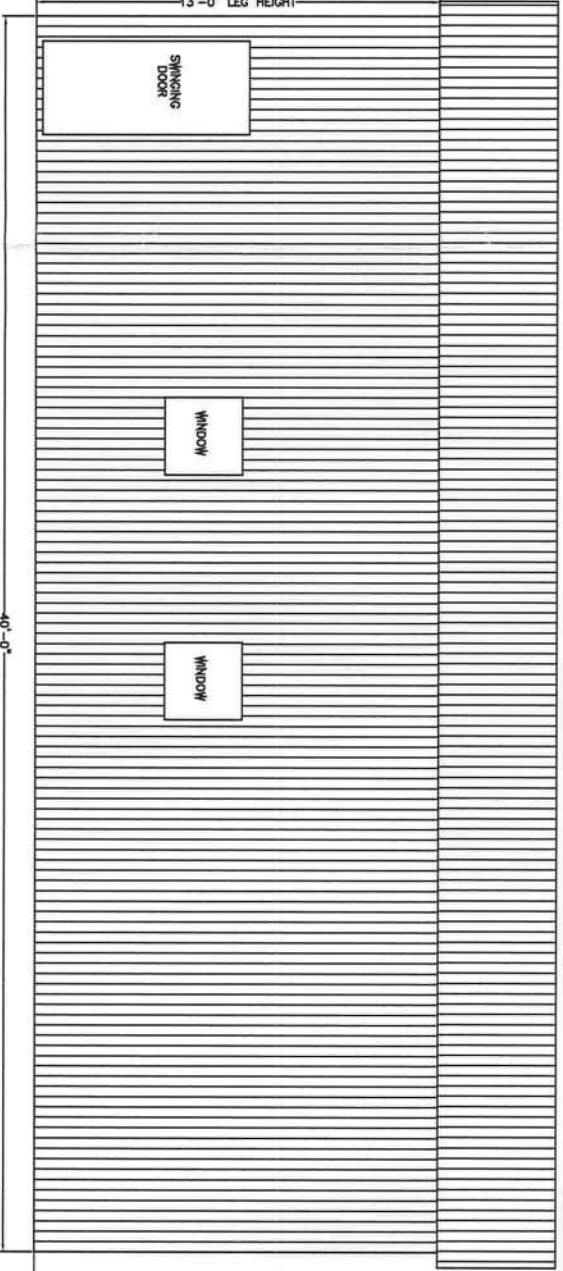
FRONT END WALL



REAR END WALL



LEFT SIDE WALL



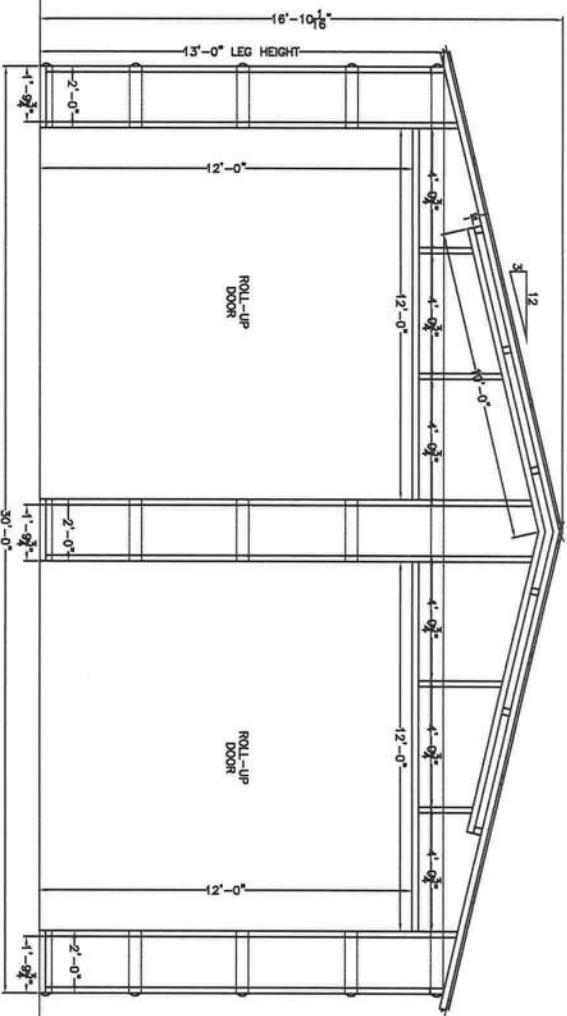
RIGHT SIDE WALL

CODE INFORMATION	
CODE VERSION	FBC 2023 8th E
MANUFACTURER	ASCE-7-22
BUILDING TYPE	UTILITY STRUCTUF
CONSTRUCTION TYPE	II-B
RISK CATEGORY	I
FIRE PROTECTION	NONE
FIRE SUPPRESSION SYSTEM	NONE
OCCUPANCY	UTILITY, U
WIND SPEED	Vult-140mph
EXPOSURE	B
ENCLOSURE	ENCLOSED
INTERNAL PRESSURE COEFF.	+/- 0.18
IMPORTANCE FACTOR	1.0
ROOF DEAD LOAD	10PSF
ROOF LIVE LOAD	20PSF OR 300lb
FLOOR DEAD LOAD	10PSF
FLOOR LIVE LOAD	50PSF
"R" RATING OF WALLS, FLOOR, ROOF	N/A
MODULES PER BUILDING	1
HURRICANE PROTECTION USAGE	NO
HURRICANE SHELTER USAGE	NO
SQUARE FOOTAGE	1,200 SQ. FT.

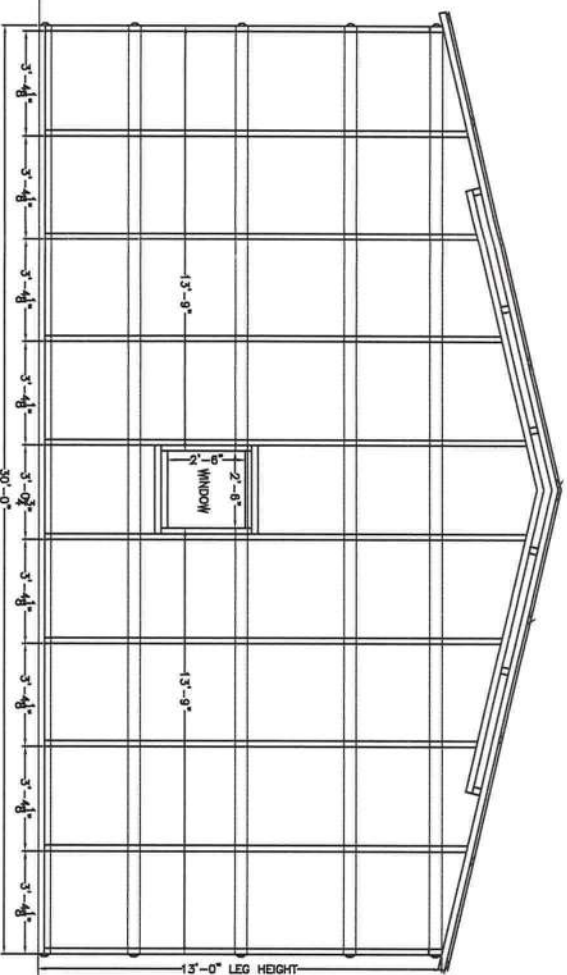
REVISIONS		
REV	DESCRIPTION	DATE
1	ADDRESS	12/12/24

DRAWN BY:	MTB
DATE:	12/7/24
LOCATION:	27-6S-16-03961-117, Columbia
SIZE:	40'L X 30'W X 13'H

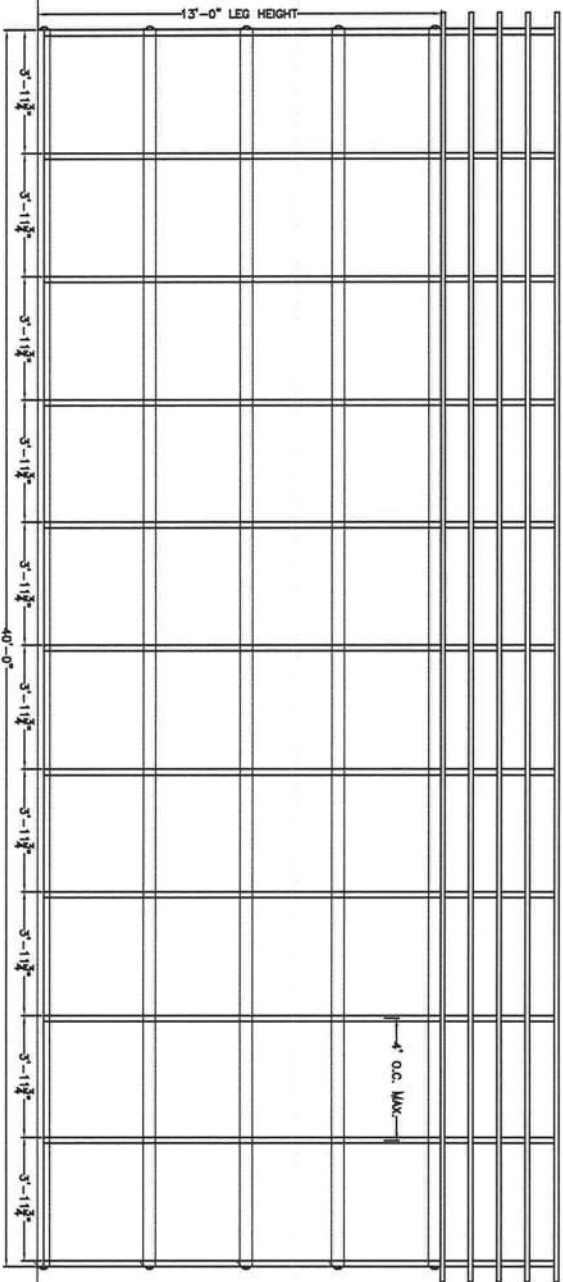
TITLE: SIDE & END VIEWS



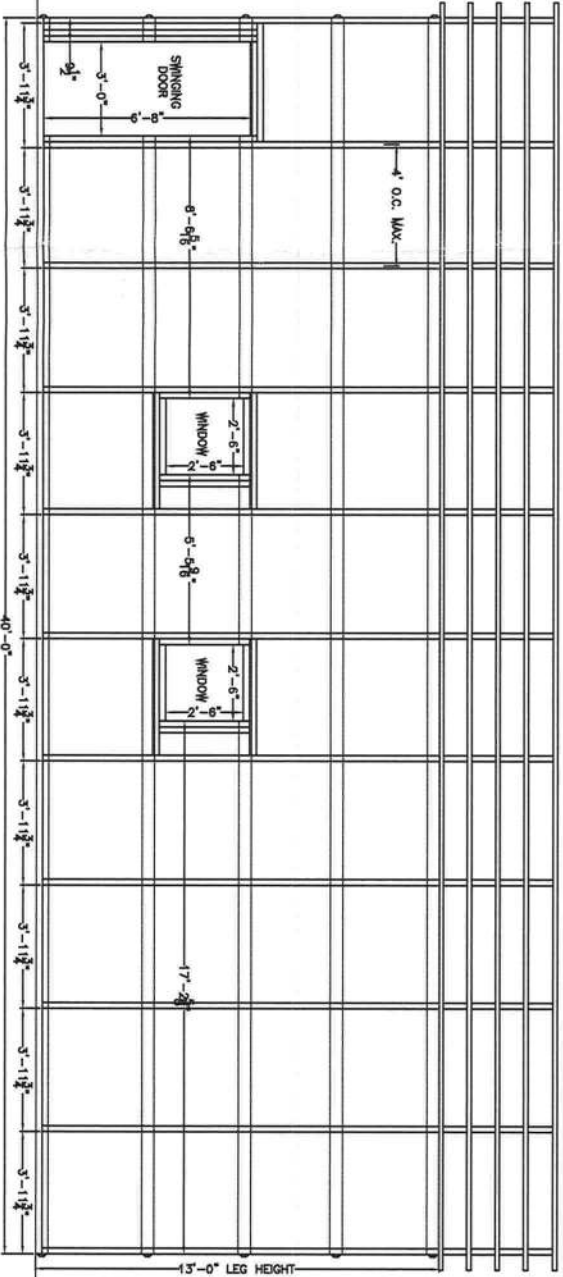
FRONT END WALL



REAR END WALL



LEFT SIDE WALL



RIGHT SIDE WALL

CODE INFORMATION	
CODE VERSION	FBC 2023 8th E
MANUFACTURER	ASCE-7-22
BUILDING TYPE	UTILITY STRUCTURE
CONSTRUCTION TYPE	II-B
RISK CATEGORY	I
FIRE PROTECTION	NONE
FIRE SUPPRESSION SYSTEM	NONE
OCCUPANCY	UTILITY, U
WIND SPEED	Vult-140mph
EXPOSURE	B
ENCLOSURE	ENCLOSED
INTERNAL PRESSURE COEFF.	+/- 0.18
IMPORTANCE FACTOR	1.0
ROOF DEAD LOAD	10PSF
ROOF LIVE LOAD	20PSF OR 300lb
FLOOR DEAD LOAD	10PSF
FLOOR LIVE LOAD	50PSF
RATING OF WALLS,FLOOR,ROOF	N/A
MODULES PER BUILDING	1
HURRICANE PROTECTION USAGE	NO
HURRICANE SHELTER USAGE	NO
SQUARE FOOTAGE	1,200 SQ. FT.

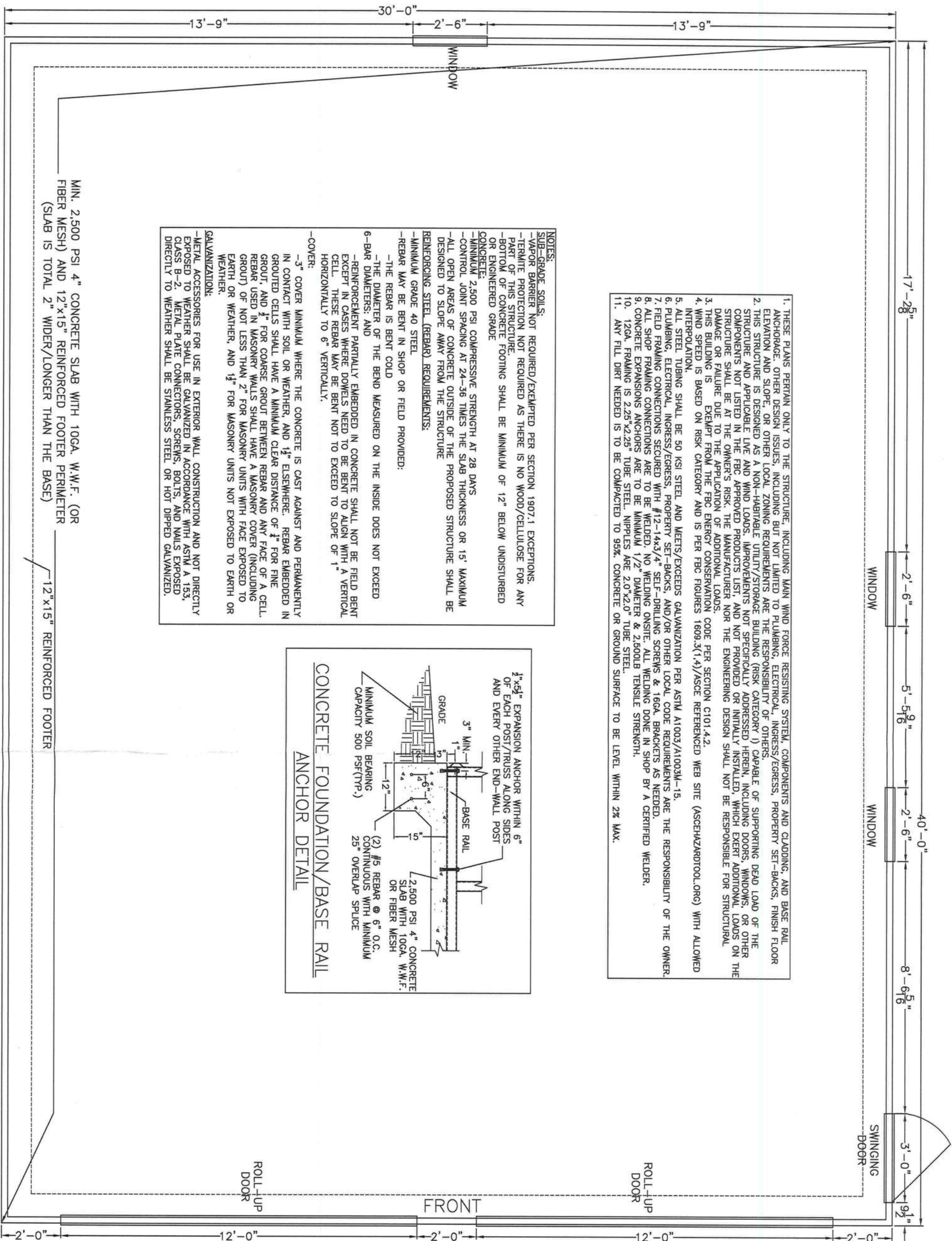
REV	DESCRIPTION	DATE
1	ADDRESS	12/12/24

DRAWN BY:	MTB
DATE:	12/7/24
LOCATION:	Pc1#27-6S-16-03951-117, Columbic
SIZE:	40'L X 30'W X 13'H

SIDE & END FRAMING VIEWS

12/13/24

Matthew T. Baldwin P.E.
Florida License #64608



1. THESE PLANS PERTAIN ONLY TO THE STRUCTURE, INCLUDING MAIN WIND FORCE RESISTING SYSTEM, COMPONENTS AND CLADDING, AND BASE RAIL ANCHORAGE. OTHER DESIGN ISSUES, INCLUDING BUT NOT LIMITED TO PLUMBING, ELECTRICAL, INGRESS/EGRESS, PROPERTY SET-BACKS, FINISH FLOOR ELEVATION AND SLOPE, OR OTHER LOCAL ZONING REQUIREMENTS ARE THE RESPONSIBILITY OF OTHERS.
2. THIS STRUCTURE IS DESIGNED AS A NON-HABITABLE UTILITY/STORAGE BUILDING (RISK CATEGORY I) CAPABLE OF SUPPORTING DEAD LOAD OF THE STRUCTURE AND APPLICABLE LIVE AND WIND LOADS. IMPROVEMENTS NOT SPECIFICALLY ADDRESSED HEREIN, INCLUDING DOORS, WINDOWS, OR OTHER COMPONENTS NOT LISTED IN THE FBC APPROVED PRODUCTS LIST, AND NOT PROVIDED OR INITIALLY INSTALLED, WHICH EXERT ADDITIONAL LOADS ON THE STRUCTURE SHALL BE AT THE OWNER'S RISK. THE MANUFACTURER NOR THE ENGINEERING DESIGN SHALL NOT BE RESPONSIBLE FOR STRUCTURAL DAMAGE OR FAILURE DUE TO THE APPLICATION OF ADDITIONAL LOADS.
3. THIS BUILDING IS EXEMPT FROM THE FBC ENERGY CONSERVATION CODE PER SECTION C101.4.2.
4. WIND SPEED IS BASED ON RISK CATEGORY AND IS PER FBC FIGURES 1609.3(1.4)/ASCE REFERENCED (ASCEHAZARDOOL.ORG) WITH ALLOWED INTERPOLATION.
5. ALL STEEL TUBING SHALL BE 50 KSI STEEL AND MEETS/EXCEEDS GALVANIZATION PER ASTM A1003/A1003M-15.
6. PLUMBING, ELECTRICAL, INGRESS/EGRESS, PROPERTY SET-BACKS, AND/OR OTHER LOCAL CODE REQUIREMENTS ARE THE RESPONSIBILITY OF THE OWNER.
7. FIELD FRAMING CONNECTIONS SECURED WITH #12-14x3/4" SELF-DRILLING SCREWS & 16GA. BRACKETS AS NEEDED.
8. ALL SHOP FRAMING CONNECTIONS ARE TO BE WELDED. NO WELDING ON-SITE. ALL WELDING DONE IN SHOP BY A CERTIFIED WELDER.
9. CONCRETE EXPANSION ANCHORS ARE TO BE MINIMUM 1/2" DIAMETER & 2,500LB TENSILE STRENGTH.
10. 12GA. FRAMING IS 2.25"x2.25" TUBE STEEL. NIPPLES ARE 2.0"x2.0" TUBE STEEL.
11. ANY FILL DIRT NEEDED IS TO BE COMPACTED TO 95%. CONCRETE OR GROUND SURFACE TO BE LEVEL WITHIN 2% MAX.

NOTES:

SUB-GRADE SOILS:

- VAPOR BARRIER NOT REQUIRED/EXEMPTED PER SECTION 1907.1 EXCEPTIONS.
- TERMITE PROTECTION NOT REQUIRED AS THERE IS NO WOOD/CELLULOSE FOR ANY PART OF THIS STRUCTURE.
- BOTTOM OF CONCRETE FOOTING SHALL BE MINIMUM OF 12" BELOW UNDISTURBED OR ENGINEERED GRADE CONCRETE.
- MINIMUM 2,500 PSI COMPRESSIVE STRENGTH AT 28 DAYS
- CONTROL JOINT SPACING AT 24-36 TIMES THE SLAB THICKNESS OR 15' MAXIMUM
- ALL OPEN AREAS OF CONCRETE OUTSIDE OF THE PROPOSED STRUCTURE SHALL BE DESIGNED TO SLOPE AWAY FROM THE STRUCTURE

REINFORCING STEEL (REBAR) REQUIREMENTS:

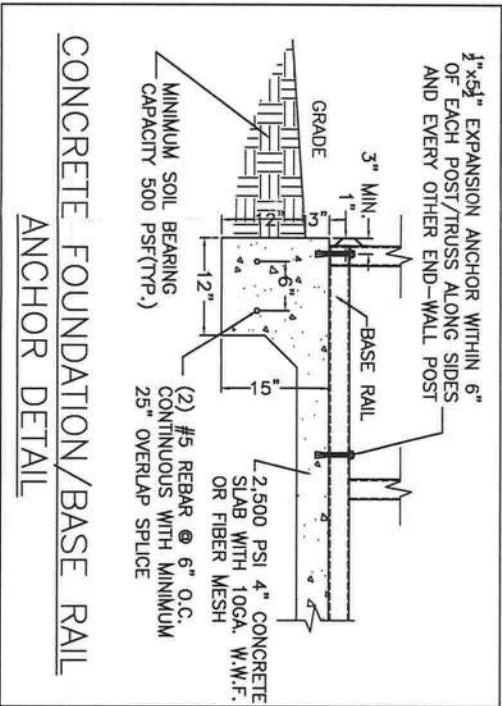
- MINIMUM GRADE 40 STEEL
- REBAR MAY BE BENT IN SHOP OR FIELD PROVIDED:
- THE REBAR IS BENT COLD
- THE DIAMETER OF THE BEND MEASURED ON THE INSIDE DOES NOT EXCEED 6-BAR DIAMETERS; AND
- REINFORCEMENT PARTIALLY EMBEDDED IN CONCRETE SHALL NOT BE FIELD BENT EXCEPT IN CASES WHERE DOWELS NEED TO BE BENT TO ALIGN WITH A VERTICAL CELL. THESE REBAR MAY BE BENT NOT TO EXCEED TO SLOPE OF 1" HORIZONTALLY TO 6" VERTICALLY.

-COVER:

- 3" COVER MINIMUM WHERE THE CONCRETE IS CAST AGAINST AND PERMANENTLY IN CONTACT WITH SOIL OR WEATHER, AND 1 1/2" ELSEWHERE. REBAR EMBEDDED IN GROUTED CELLS SHALL HAVE A MINIMUM CLEAR DISTANCE OF 1/2" FOR FINE GROUT, AND 1" FOR COARSE GROUT BETWEEN REBAR AND ANY FACE OF A CELL. REBAR USED IN MASONRY WALLS SHALL HAVE A MASONRY COVER (INCLUDING GROUT) OF NOT LESS THAN 2" FOR MASONRY UNITS WITH FACE EXPOSED TO EARTH OR WEATHER, AND 1 1/2" FOR MASONRY UNITS NOT EXPOSED TO EARTH OR WEATHER.

GALVANIZATION:

- METAL ACCESSORIES FOR USE IN EXTERIOR WALL CONSTRUCTION AND NOT DIRECTLY EXPOSED TO WEATHER SHALL BE GALVANIZED IN ACCORDANCE WITH ASTM A 153, CLASS B-2. METAL PLATE CONNECTORS, SCREWS, BOLTS, AND NAILS EXPOSED DIRECTLY TO WEATHER SHALL BE STAINLESS STEEL OR HOT DIPPED GALVANIZED.



TITLE: PLAN VIEW - 55romad

Sheet: 1 OF 4

Matthew T. Baldwin P.E.
Florida License #64608

12/13/24

CM

DESIGN BY: MTB
DATE: 12/7/24
LOCATION: Pct#27-65-16-03951-117, Columbic
SIZE: 40' L X 30' W X 13' H

CODE INFORMATION	
CODE VERSION	FBC 2023 8th E
MANUFACTURER	ASCE-7-22
BUILDING TYPE	UTILITY STRUCTURE
CONSTRUCTION TYPE	II-B
RISK CATEGORY	I
FIRE PROTECTION	NONE
FIRE SUPPRESSION SYSTEM	NONE
OCCUPANCY	UTILITY, U
WIND SPEED	Vult-140mph
EXPOSURE	B
ENCLOSURE	ENCLOSED
INTERNAL PRESSURE COEFF.	+/- 0.18
IMPORTANCE FACTOR	1.0
ROOF DEAD LOAD	10PSF
ROOF LIVE LOAD	20PSF OR 300lb
FLOOR DEAD LOAD	10PSF
FLOOR LIVE LOAD	50PSF
"R" RATING OF WALLS, FLOOR, ROOF	N/A
MODULES PER BUILDING	1
HURRICANE PROTECTION USAGE	NO
HURRICANE SHELTER USAGE	NO
SQUARE FOOTAGE	1,200 SQ. FT.

REV	DESCRIPTION	DATE
1	ADDRESS	12/12/24