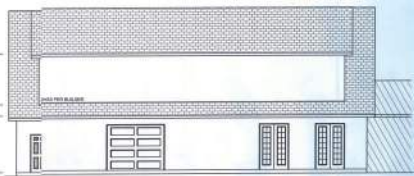
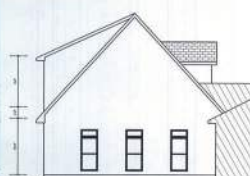




RIGHT ELEVATION
SCALE 1/4" = 1'-0"



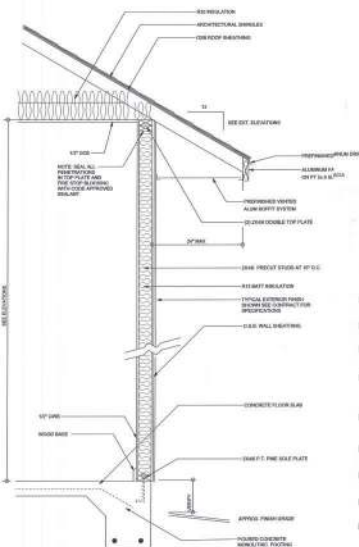
REAR ELEVATION
SCALE 1/4" = 1'-0"



LEFT ELEVATION
SCALE 1/4" = 1'-0"



FRONT ELEVATION
SCALE 1/4" = 1'-0"

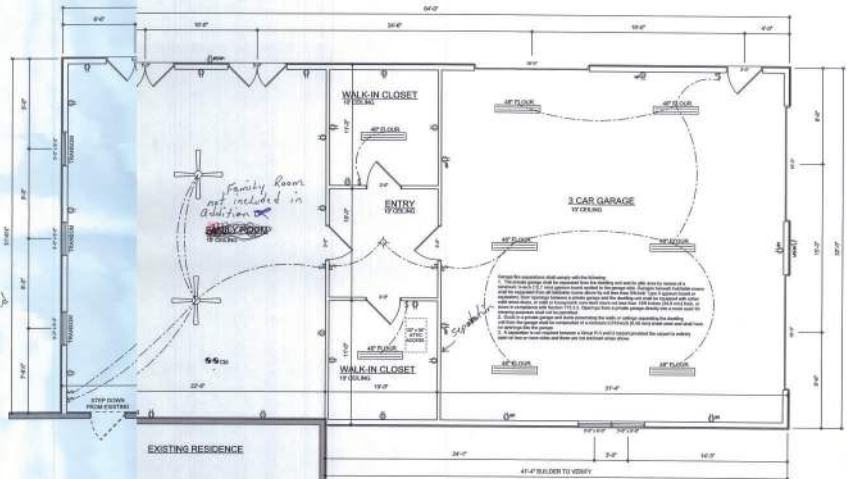


TYPICAL DESIGN WALL SECTION
NON-STRUCTURAL DATA

ELECTRICAL LEGEND	
	CEILING FAN (SEE NOTES FOR LIGHT KIT)
	DOUBLE SECURITY LIGHT
	DIMMER SWITCH
	RECESSED CAN LIGHT
	BATH EXHAUST FAN WITH LIGHT
	BATH EXHAUST FAN
	LIGHT FIXTURE
	DUPLEX OUTLET
	20A OUTLET
	DUPLEX OUTLET
	SMOKE DETECTOR
	WALL SWITCH
	3-WAY WALL SWITCH
	4-WAY WALL SWITCH
	WATER PROOF UP OUTLET
	PHONE JACK
	TELEVISION JACK
	GARAGE DOOR OPENER
	CARBON MONOXIDE ALARM

ELECTRICAL PLAN NOTES

- E-1: WIRE ALL APPLIANCES, HOOD UNITS AND OTHER EQUIPMENT PER MANUFACTURER'S SPECIFICATIONS.
- E-2: CONSULT THE OWNER FOR THE NUMBER OF SEPARATE TELEPHONE LINES TO BE INSTALLED.
- E-3: ALL INSTALLATIONS SHALL BE PERMITTED ELECTRICAL CODE.
- E-4: ALL WIRING SHALL BE IN ACCORDANCE WITH THE NATIONAL ELECTRICAL CODE.
- E-5: TELEPHONE, TELEVISION AND OTHER LOW VOLTAGE SERVICES SHALL BE INSTALLED IN ACCORDANCE WITH THE OWNER'S SPECIFICATIONS, IN ACCORDANCE WITH APPLICABLE SECTIONS OF REGULATORY CODES.
- E-6: ALL ELECTRICAL WORK SHALL BE RESPONSIBLE FOR THE DESIGN & SCOPE OF ELECTRICAL SERVICE AND CIRCUITS.
- E-7: ENTRY OF SERVICE (UNDERGROUND OR OVERHEAD) TO BE DETERMINED BY POWER COMPANY.
- E-8: ALL BREAKERS & JUNGLES ROOMS IDENTIFIED SHALL BE RE-LOCATED TO CONFORM WITH CODES.
- E-9: ALL OUTLETS TO BE RE-LOCATED TO CONFORM WITH FLOOD ELEVATION.
- E-10: A SERVICE DISCONNECT WITH OVER CURRENT PROTECTION SHALL BE INSTALLED OUTSIDE OF THE BUILDING ON THE LOAD SIDE OF THE METER. ALL MAIN ELECTRICAL CONDUCTORS ENTERING THE BUILDING SHALL BE INSTALLED IN ACCORDANCE WITH APPLICABLE SECTIONS OF REGULATORY CODES.
- E-11: CARBON MONOXIDE ALARMS SHALL BE REQUIRED WITHIN 10' OF ALL ROOMS FOR SLEEPING PURPOSES IN BUILDINGS HAVING A FIRE, FUEL BURNING APPLIANCE, A FIREPLACE OR ATTACHED GARAGE.



FLOOR PLAN
SCALE 1/4" = 1'-0"

AREA SUMMARY

LIVING AREA	1055	S. F.
GARAGE AREA	1003	S. F.
TOTAL AREA	2058	S. F.



REVISIONS

SECTION

Job: Sparks Addition

ADDRESS: Citrus County, Florida

Mark D. Doremy P.E.
P.O. Box 888
Lake City, Florida 32059
Phone: (904) 754-3419
Fax: (904) 269-4871

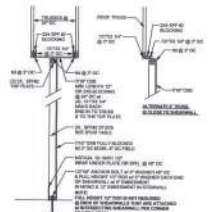
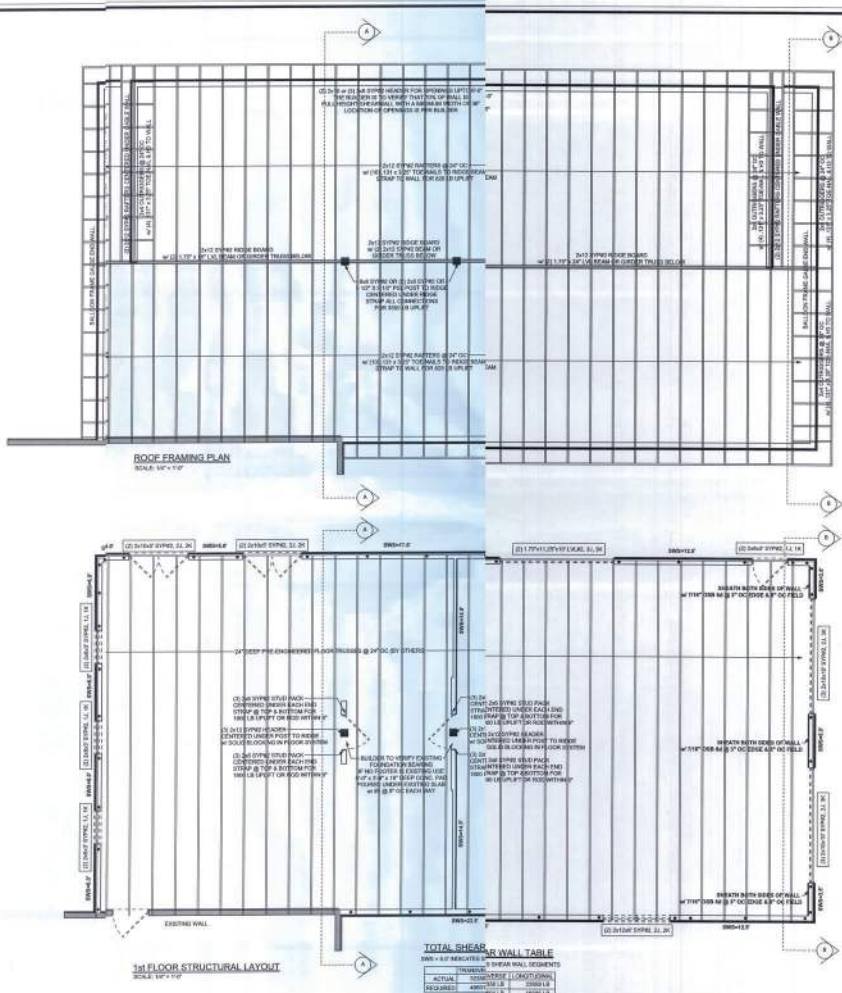
DRAWN BY: [Name]
CHECKED BY: [Name]

DATE: Feb. 10, 2010

JOB NUMBER: 100213

DRAWING NUMBER: #1

CAD: [Name]



NOTE: HAVE THESE DESIGNER LOAD TRUSS FOR ALL WALL LOADS
INTERIOR SHEAR WALL
 ONE STORY WOOD FRAME W/ STRAPS & AN

REVISIONS

SOTHAN

DESIGNER/ENGINEER:
 MICHAEL W. BUELL, P.E., License No. FL 0004, 001272

DATE:
 FEBRUARY 20, 2010

PROJECT:
 MARK DIXONWAY, PHOENIX AZ

DESCRIPTION:
 INTERIOR SHEAR WALL FOR ONE STORY WOOD FRAME W/ STRAPS & AN

SCALE:
 AS SHOWN

REVISIONS:
 1. CORRECTED WALL ORIENTATION FOR WALL 1

Handwritten signature: M. W. Buell

Job/Sparks Addition
 ADDRESS:
 10000 N. CENTRAL EXPRESSWAY, PHOENIX, AZ 85028

Mark Dixonway P.E.
 P.O. Box 888
 Lake City, Florida 32509
 Phone: (904) 734-5419
 Fax: (904) 259-4871

DATE: February 20, 2010

DRAWN BY: STRUCTURING OF
 Lee Brown

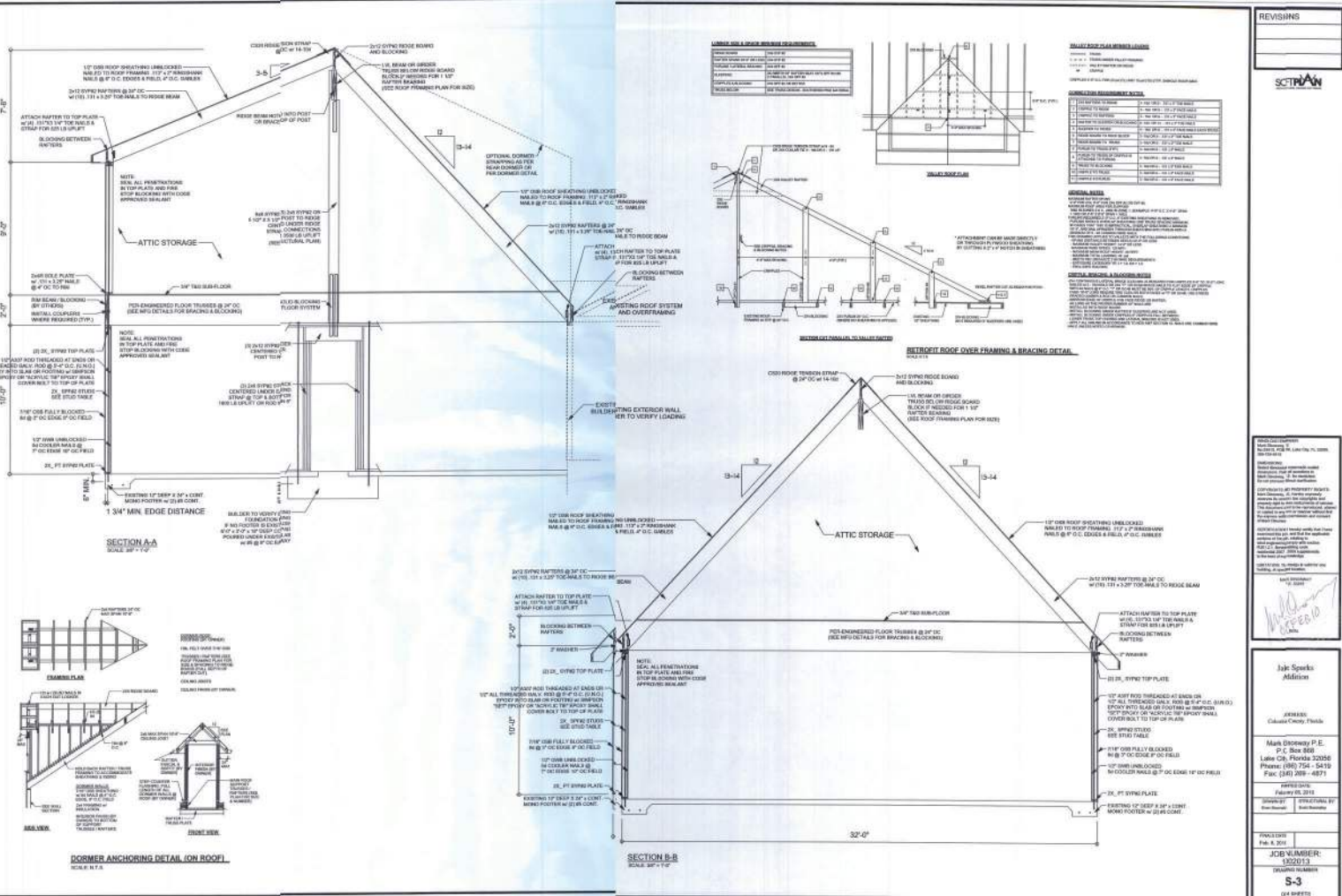
FILE NO: FEB. 8. 2010

JOB NUMBER:
 100171

DRAWER NUMBER:
 S-2
 OF 4 SHEETS

REVISIONS

SECTION



DESCRIPTION	QUANTITY	UNIT
1" X 12" JOIST	10	LINEAL FEET
2" X 12" JOIST	5	LINEAL FEET
2" X 10" JOIST	15	LINEAL FEET
2" X 8" JOIST	20	LINEAL FEET
2" X 6" JOIST	30	LINEAL FEET
2" X 4" JOIST	40	LINEAL FEET
2" X 3" JOIST	50	LINEAL FEET
2" X 2" JOIST	60	LINEAL FEET
2" X 1" JOIST	70	LINEAL FEET
2" X 1/2" JOIST	80	LINEAL FEET
2" X 3/4" JOIST	90	LINEAL FEET
2" X 5/8" JOIST	100	LINEAL FEET
2" X 7/8" JOIST	110	LINEAL FEET
2" X 15/16" JOIST	120	LINEAL FEET
2" X 1" JOIST	130	LINEAL FEET
2" X 1 1/8" JOIST	140	LINEAL FEET
2" X 1 1/4" JOIST	150	LINEAL FEET
2" X 1 1/2" JOIST	160	LINEAL FEET
2" X 1 3/4" JOIST	170	LINEAL FEET
2" X 1 7/8" JOIST	180	LINEAL FEET
2" X 2" JOIST	190	LINEAL FEET
2" X 2 1/8" JOIST	200	LINEAL FEET
2" X 2 1/4" JOIST	210	LINEAL FEET
2" X 2 1/2" JOIST	220	LINEAL FEET
2" X 2 3/4" JOIST	230	LINEAL FEET
2" X 2 7/8" JOIST	240	LINEAL FEET
2" X 3" JOIST	250	LINEAL FEET
2" X 3 1/8" JOIST	260	LINEAL FEET
2" X 3 1/4" JOIST	270	LINEAL FEET
2" X 3 1/2" JOIST	280	LINEAL FEET
2" X 3 3/4" JOIST	290	LINEAL FEET
2" X 3 7/8" JOIST	300	LINEAL FEET
2" X 4" JOIST	310	LINEAL FEET
2" X 4 1/8" JOIST	320	LINEAL FEET
2" X 4 1/4" JOIST	330	LINEAL FEET
2" X 4 1/2" JOIST	340	LINEAL FEET
2" X 4 3/4" JOIST	350	LINEAL FEET
2" X 4 7/8" JOIST	360	LINEAL FEET
2" X 5" JOIST	370	LINEAL FEET
2" X 5 1/8" JOIST	380	LINEAL FEET
2" X 5 1/4" JOIST	390	LINEAL FEET
2" X 5 1/2" JOIST	400	LINEAL FEET
2" X 5 3/4" JOIST	410	LINEAL FEET
2" X 5 7/8" JOIST	420	LINEAL FEET
2" X 6" JOIST	430	LINEAL FEET
2" X 6 1/8" JOIST	440	LINEAL FEET
2" X 6 1/4" JOIST	450	LINEAL FEET
2" X 6 1/2" JOIST	460	LINEAL FEET
2" X 6 3/4" JOIST	470	LINEAL FEET
2" X 6 7/8" JOIST	480	LINEAL FEET
2" X 7" JOIST	490	LINEAL FEET
2" X 7 1/8" JOIST	500	LINEAL FEET
2" X 7 1/4" JOIST	510	LINEAL FEET
2" X 7 1/2" JOIST	520	LINEAL FEET
2" X 7 3/4" JOIST	530	LINEAL FEET
2" X 7 7/8" JOIST	540	LINEAL FEET
2" X 8" JOIST	550	LINEAL FEET
2" X 8 1/8" JOIST	560	LINEAL FEET
2" X 8 1/4" JOIST	570	LINEAL FEET
2" X 8 1/2" JOIST	580	LINEAL FEET
2" X 8 3/4" JOIST	590	LINEAL FEET
2" X 8 7/8" JOIST	600	LINEAL FEET
2" X 9" JOIST	610	LINEAL FEET
2" X 9 1/8" JOIST	620	LINEAL FEET
2" X 9 1/4" JOIST	630	LINEAL FEET
2" X 9 1/2" JOIST	640	LINEAL FEET
2" X 9 3/4" JOIST	650	LINEAL FEET
2" X 9 7/8" JOIST	660	LINEAL FEET
2" X 10" JOIST	670	LINEAL FEET
2" X 10 1/8" JOIST	680	LINEAL FEET
2" X 10 1/4" JOIST	690	LINEAL FEET
2" X 10 1/2" JOIST	700	LINEAL FEET
2" X 10 3/4" JOIST	710	LINEAL FEET
2" X 10 7/8" JOIST	720	LINEAL FEET
2" X 11" JOIST	730	LINEAL FEET
2" X 11 1/8" JOIST	740	LINEAL FEET
2" X 11 1/4" JOIST	750	LINEAL FEET
2" X 11 1/2" JOIST	760	LINEAL FEET
2" X 11 3/4" JOIST	770	LINEAL FEET
2" X 11 7/8" JOIST	780	LINEAL FEET
2" X 12" JOIST	790	LINEAL FEET
2" X 12 1/8" JOIST	800	LINEAL FEET
2" X 12 1/4" JOIST	810	LINEAL FEET
2" X 12 1/2" JOIST	820	LINEAL FEET
2" X 12 3/4" JOIST	830	LINEAL FEET
2" X 12 7/8" JOIST	840	LINEAL FEET
2" X 13" JOIST	850	LINEAL FEET
2" X 13 1/8" JOIST	860	LINEAL FEET
2" X 13 1/4" JOIST	870	LINEAL FEET
2" X 13 1/2" JOIST	880	LINEAL FEET
2" X 13 3/4" JOIST	890	LINEAL FEET
2" X 13 7/8" JOIST	900	LINEAL FEET
2" X 14" JOIST	910	LINEAL FEET
2" X 14 1/8" JOIST	920	LINEAL FEET
2" X 14 1/4" JOIST	930	LINEAL FEET
2" X 14 1/2" JOIST	940	LINEAL FEET
2" X 14 3/4" JOIST	950	LINEAL FEET
2" X 14 7/8" JOIST	960	LINEAL FEET
2" X 15" JOIST	970	LINEAL FEET
2" X 15 1/8" JOIST	980	LINEAL FEET
2" X 15 1/4" JOIST	990	LINEAL FEET
2" X 15 1/2" JOIST	1000	LINEAL FEET

DATE: 01/15/2013
 DRAWN BY: J. SPEARS
 CHECKED BY: J. SPEARS
 APPROVED BY: J. SPEARS
 DATE: 01/15/2013

Job Speaks
 Addison
 ADDRESS:
 Cultural Center, Florida

Mark Dreyfus P.E.
 P.O. Box 808
 Lake City, Florida 32056
 Phone: (904) 754-1419
 Fax: (904) 769-4871

DATE: 01/15/2013
 DRAWN BY: J. SPEARS
 CHECKED BY: J. SPEARS

PROJECT:
 JOB NUMBER:
 SHEET NUMBER:
 S-3