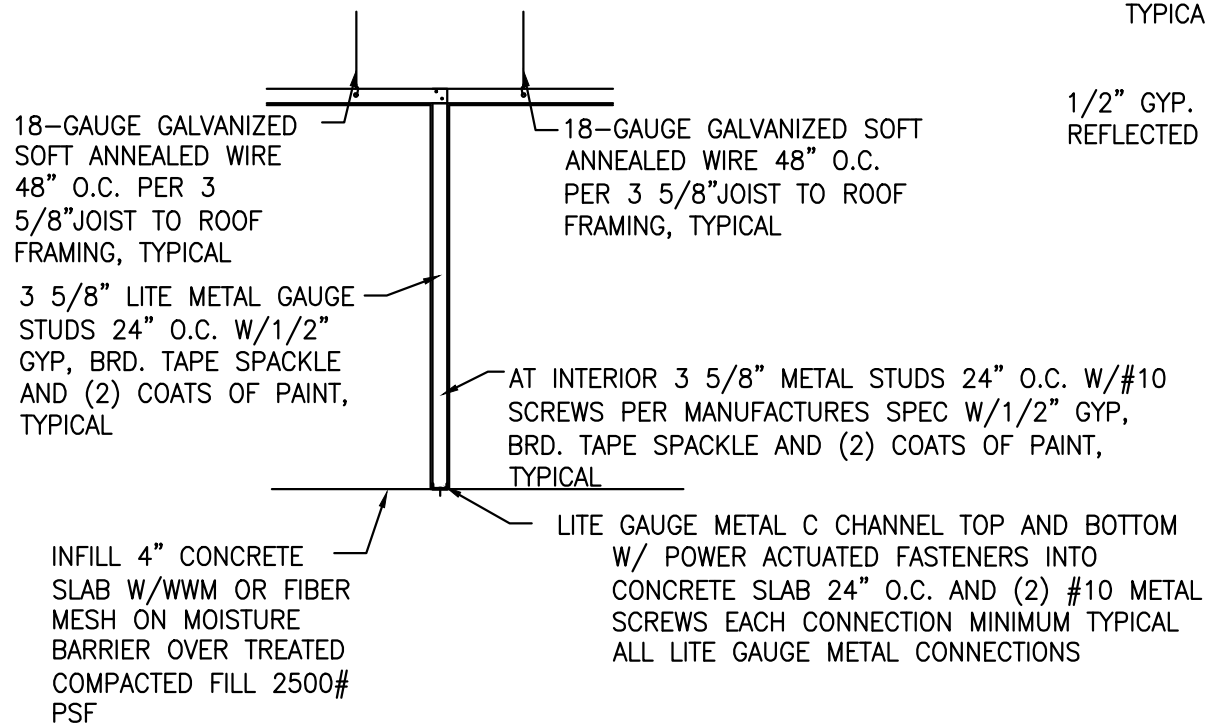


**TYPICAL EXTERIOR WALL SECTION**

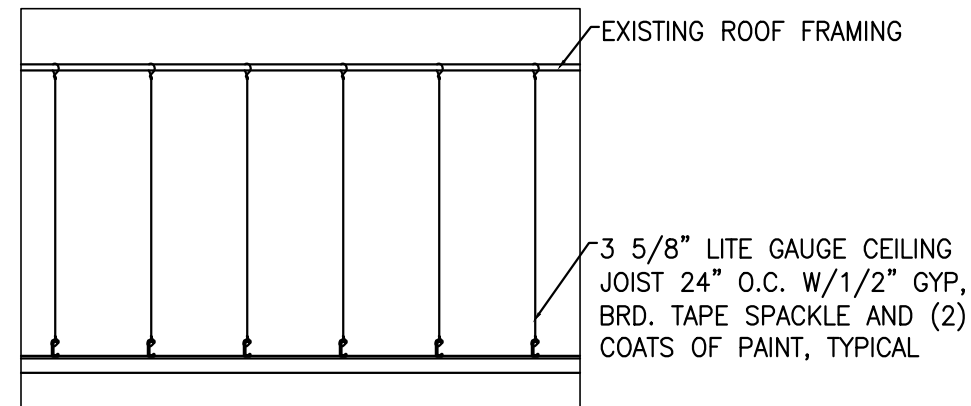
SCALE 1/4" = 1'-0"



**INTERIOR WALL SECTION TYPICAL**

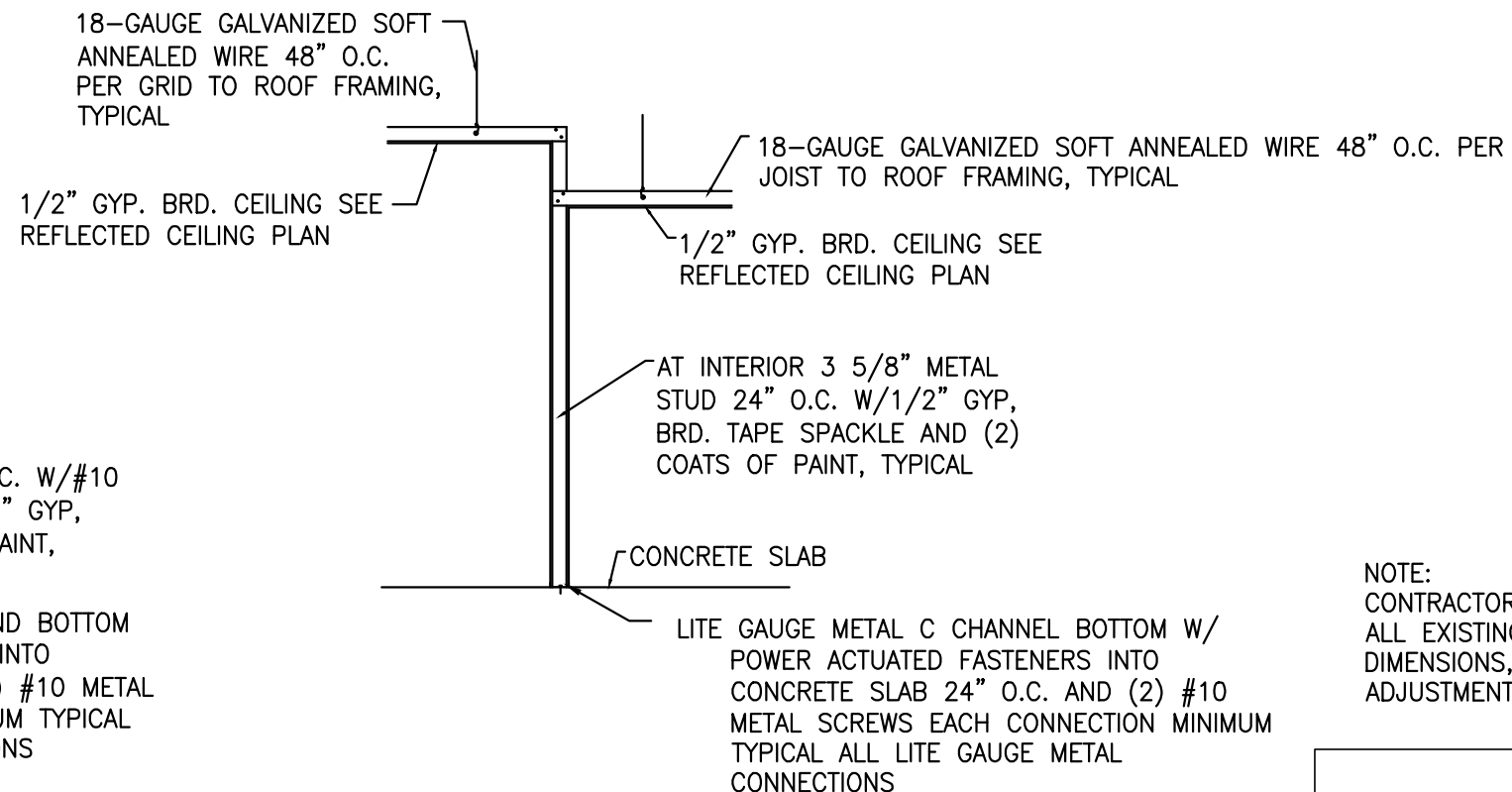
SCALE 1/4" = 1'-0"

NOTE:  
TYPICAL INTERIOR STUDS AND JOIST SHALL BE 22 GAUGE UNLESS OTHERWISE STATED.



**CEILING SUPPORT DETAIL**

SCALE 1/4" = 1'-0"



**INTERIOR WALL SECTION TYPICAL**

SCALE 1/4" = 1'-0"

NOTE:  
CONTRACTOR SHALL VERIFY ALL EXISTING CONDITIONS, DIMENSIONS, ETC. AND MAKE ADJUSTMENTS AS REQUIRED.

<b>JIM FORCE</b> 311 CAIN GLENN FORT WHITE, FLORIDA 32038	
DOUG SICKENBERGER	4-5-21
7576 FREMONT AVENUE KEYSTONE HEIGHT, FLORIDA 352-215-7501	DRAWN BY: das SHEET NO. 7